

17 May 2018 / Number 19

Surveillance System in Tokyo, Japan

The infectious diseases which all physicians must report

All physicians must report to health centers the incidence of the diseases which are shown at page one. Health centers electronically report the individual cases to Tokyo Metropolitan Infectious Disease Surveillance Center.

The infectious diseases required to be reported by the sentinels

The numbers of patients who visit the sentinel clinics or hospitals during a week are reported to health centers in Tokyo. And they electronically report the numbers to Tokyo Metropolitan Infectious Disease Surveillance Center. We have about 500 sentinel clinics and hospitals in Tokyo.

Tokyo Metropolitan Institute of Public Health

TEL:81-3-3363-3213 FAX:81-3-5332-7365

e-mail:www@tokyo-eiken.go.jp

URL:idsc.tokyo-eiken.go.jp/

Number of patients with the diseases which all physicians must report

Category	Diseases	Tokyo					Japan	
		16th	17th	18th	19th	Cum 2018	19th	Cum 2018
I	Ebola hemorrhagic fever							
	Crimean-Congo hemorrhagic fever							
	Smallpox							
	South American hemorrhagic fever							
	Plague							
	Marburg disease							
	Lassa fever							
II	Acute poliomyelitis							
	Tuberculosis	74	93	29	61	1,188	371	7,405
	Diphtheria							
	Severe Acute Respiratory Syndrome(SARS)							
	Middle East Respiratory Syndrome (MERS)							
	Avian influenza H5N1							
	Avian influenza H7N9							
III	Cholera							2
	Shigellosis	1				16	10	69
	Enterohemorrhagic Escherichia coli infection	4	5	3	7	39	47	319
	Typhoid fever				1	4	2	17
	Paratyphoid fever	1	1			5	1	9
IV	Hepatitis E	1			6	30	13	144
	West Nile fever							
	Hepatitis A	14	10	10	10	133	23	262
	Echinococcosis							3
	Yellow fever							
	Psittacosis							3
	Omsk hemorrhagic fever							
	Relapsing fever							
	Kyasanur forest disease							
	Q fever							1
	Rabies							
	Coccidioidomycosis							
	Monkeypox							
	Zika virus infection							
	Severe Fever with Thrombocytopenia Syndrome						7	17
	Hemorrhagic fever with renal syndrome							
	Western equine encephalitis							
	Tick-borne encephalitis							
	Anthrax							
	Chikungunya fever							
	Scrub typhus(Tsutsugamushi disease)					4	6	58
	Dengue fever		1			16	1	35
	Eastern equine encephalitis							
	Avian influenza (excluding H5N1 and H7N9)							
	Nipah virus infection							
	Japanese spotted fever						10	29
	Japanese encephalitis							
	Hantavirus pulmonary syndrome							
	Herpes B virus infection							
	Glanders							
	Brucellosis							1
	Venezuelan equine encephalitis							
	Hendra virus infection							
Epidemic typhus								
Botulism					1		2	
Malaria					2	2	15	
Tularemia								
Lyme disease								
Lyssavirus infection(excluding rabies)								
Rift valley fever								
Melioidosis								
Legionellosis	1	1		3	27	37	376	
Leptospirosis								
Rocky mountain spotted fever								

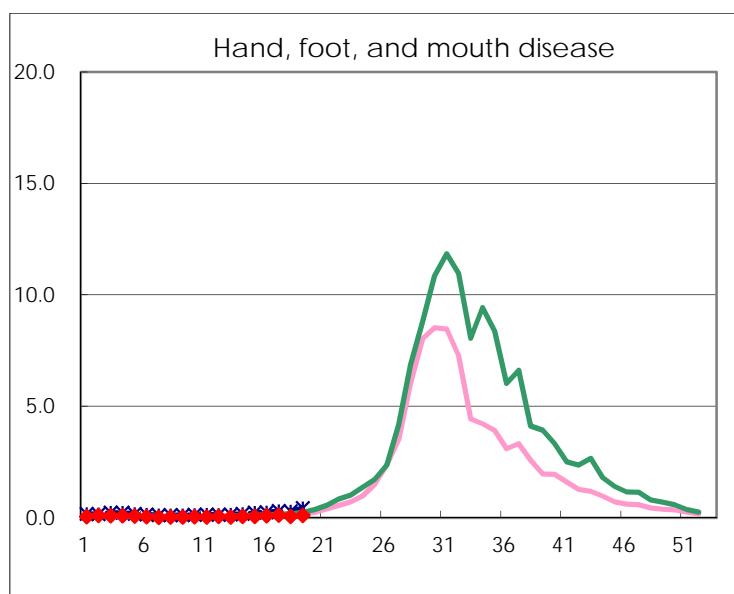
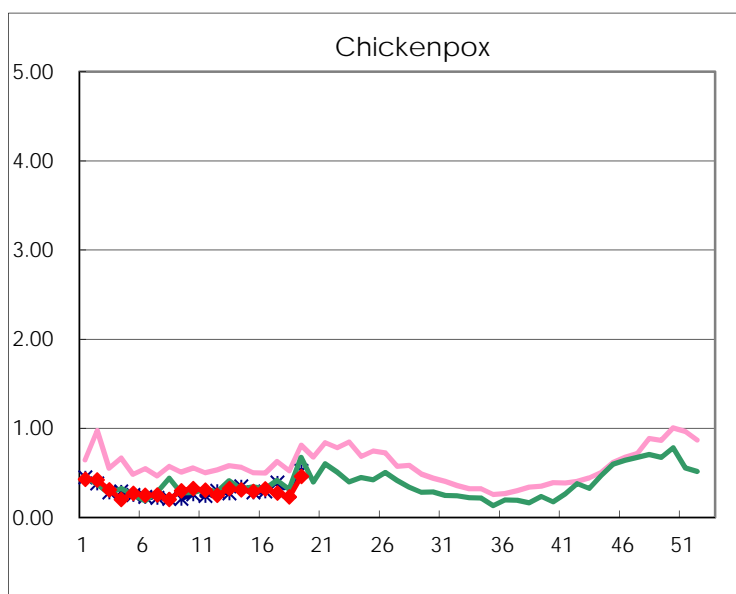
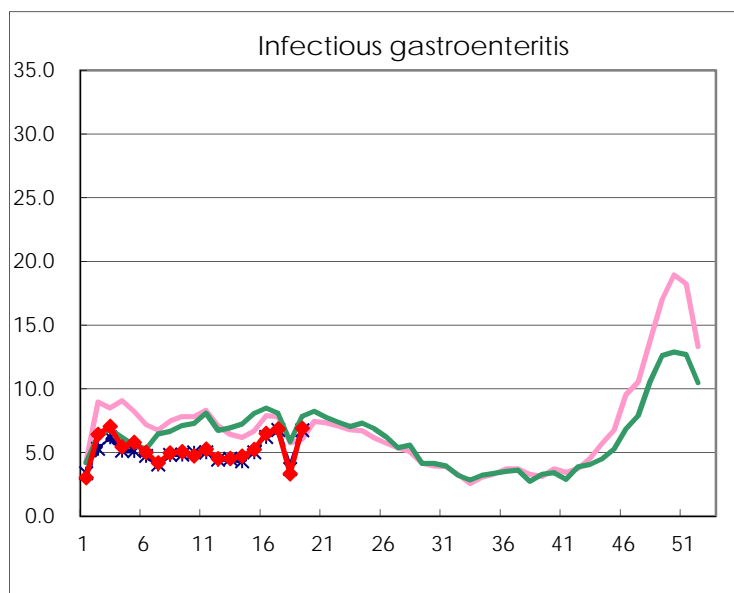
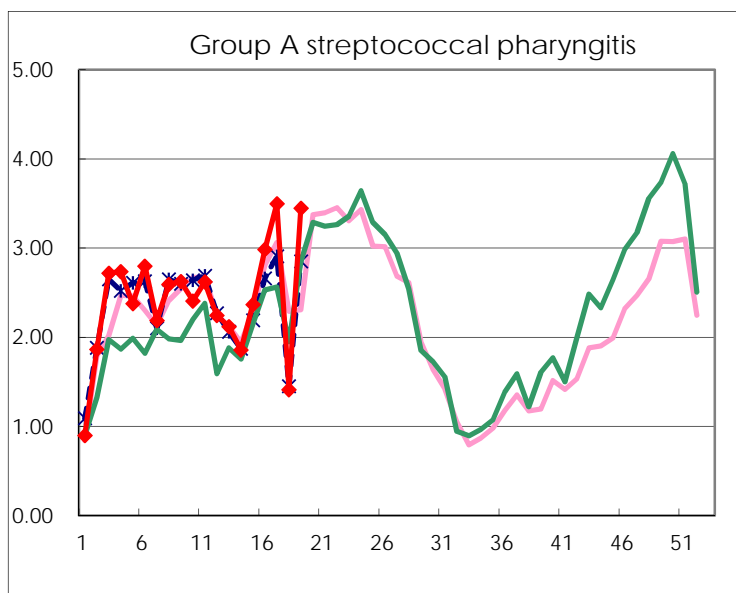
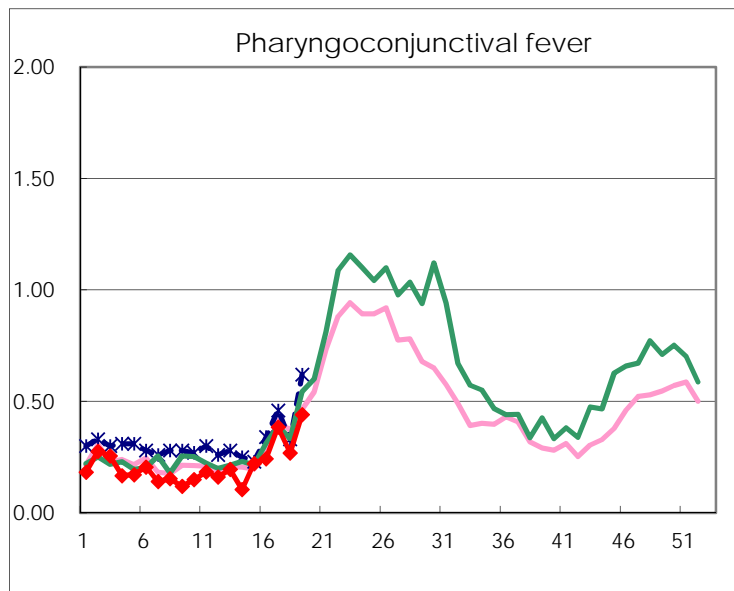
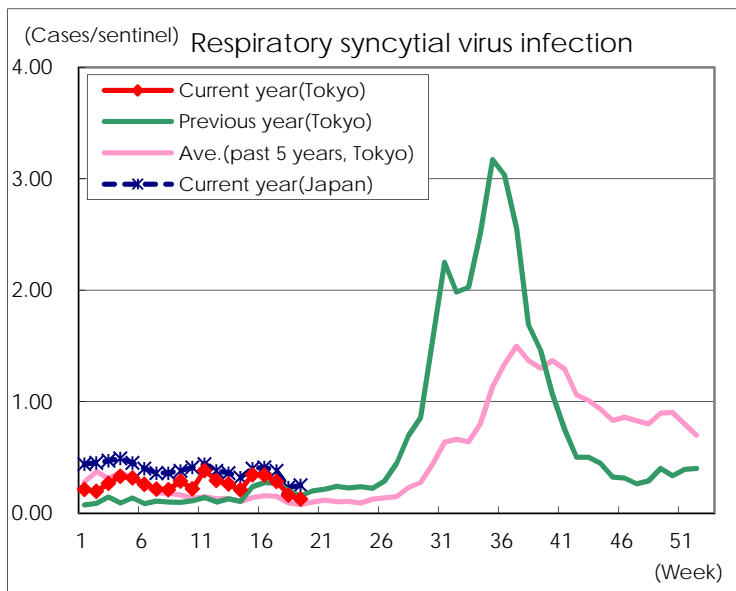
Category	Diseases	Tokyo					Japan	
		16th	17th	18th	19th	Cum 2018	19th	Cum 2018
V	Amebiasis	5	4	2	4	60	13	282
	Viral hepatitis(excluding hepatitis A and E)	1	2		1	12	3	61
	CRE infection	4	4	3	5	58	30	576
	Acute Flaccid Paralysis (excluding Acute poliomyelitis)			1		1		3
	Acute encephalitis(excluding JE and WNE)		1	2		31	11	305
	Cryptosporidiosis					1		6
	Creutzfeldt-Jakob disease					5	3	70
	Severe invasive streptococcal infections(TSLs)	2	3	2	4	46	12	305
	Acquired immunodeficiency syndrome (AIDS)	10	3	3	9	135	15	425
	Giardiasis	1				9		28
	Invasive <i>Haemophilus influenzae</i> disease		1	2	1	10	10	174
	Invasive meningococcal disease					4		15
	Invasive pneumococcal disease	4	13	5	8	176	78	1,527
	Varicella (limited to hospitalized case)	1	3		1	17	9	144
	Congenital rubella syndrome							
	Syphilis	39	37	20	35	578	80	2,157
	Disseminated cryptococcosis	1				9	3	62
	Tetanus					1	2	26
	Vancomycin-resistant <i>S. aureus</i> infection							
	Vancomycin-resistant <i>Enterococcus</i> infection					1	2	16
	Pertussis	13	12	9	6	134	93	1,380
	Rubella	1				1	3	17
Measles	3	1	1	1	11	18	149	
MDRA infection	1				2		7	

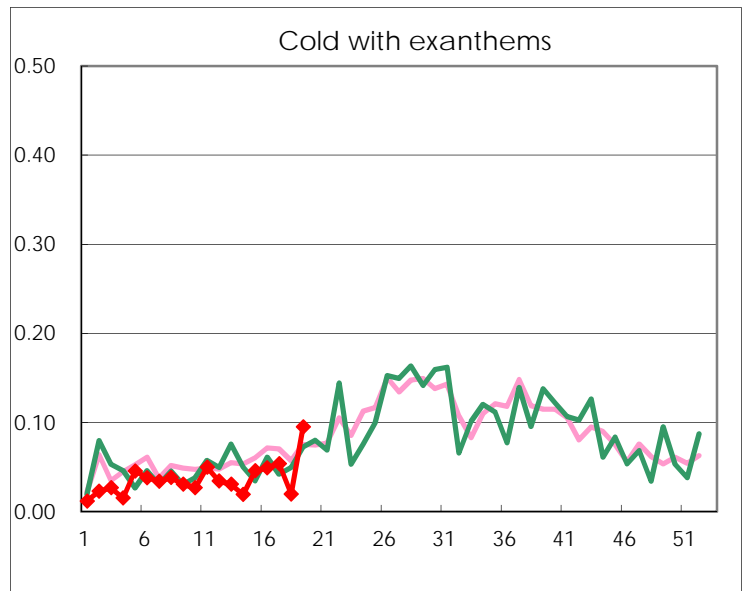
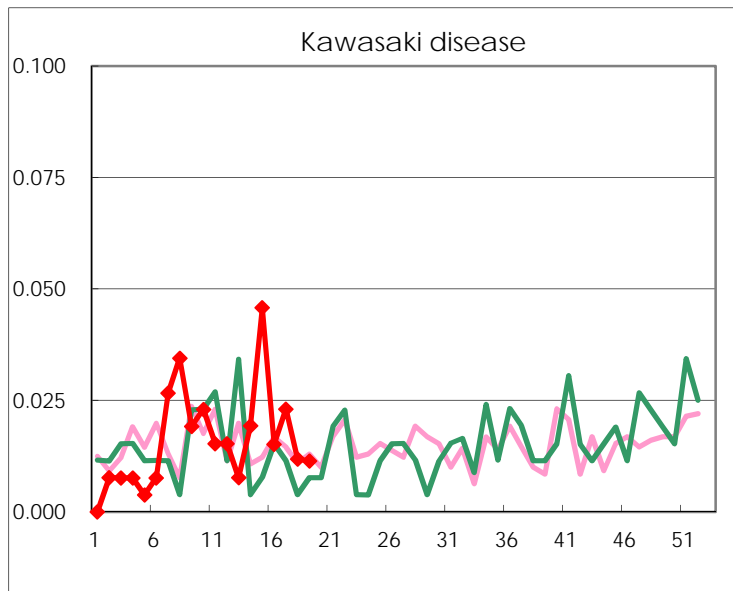
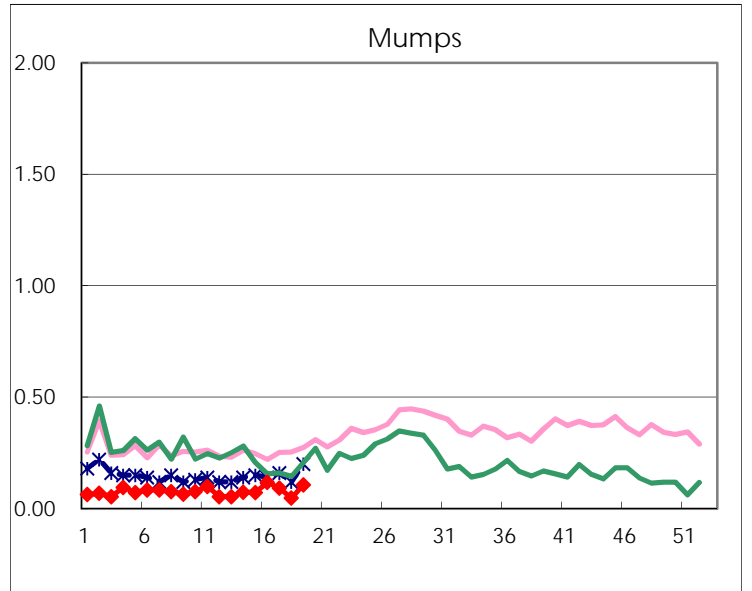
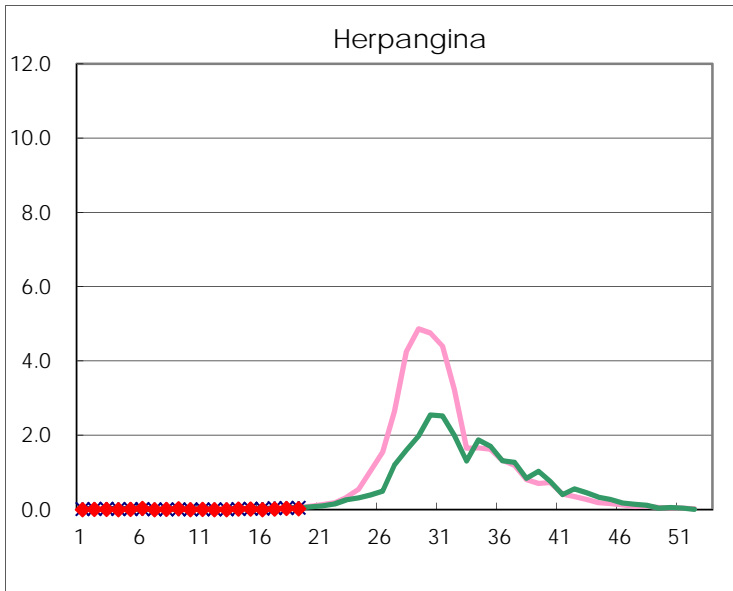
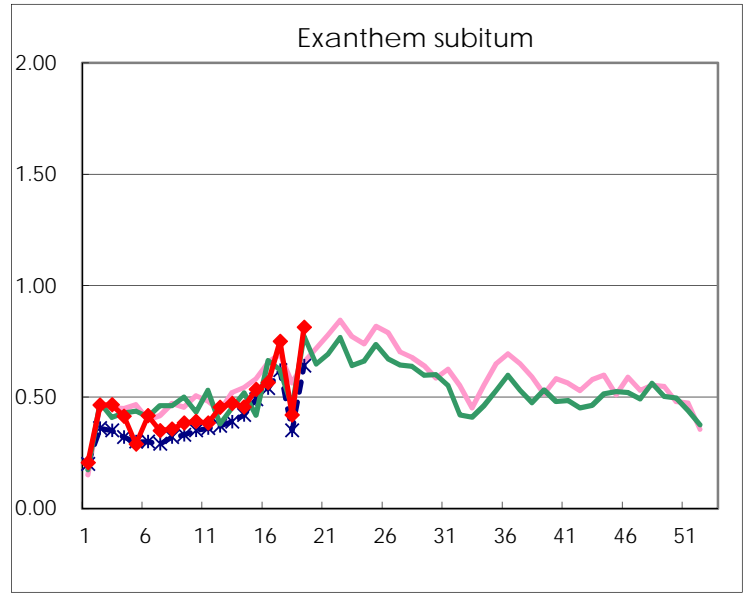
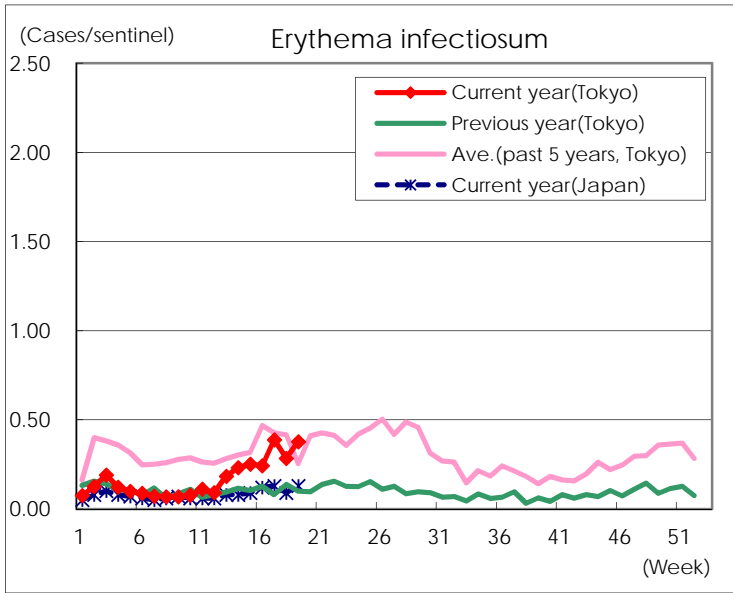
Number of patients with the diseases to be reported
by the designated clinics and hospitals

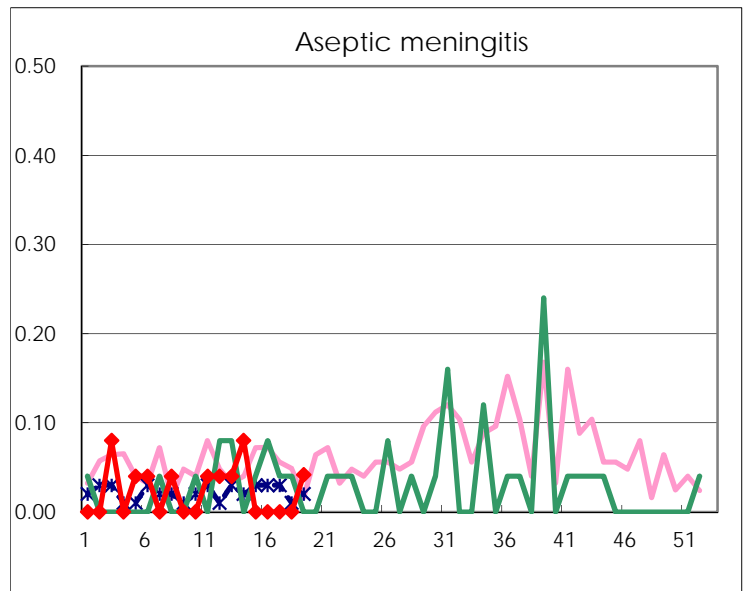
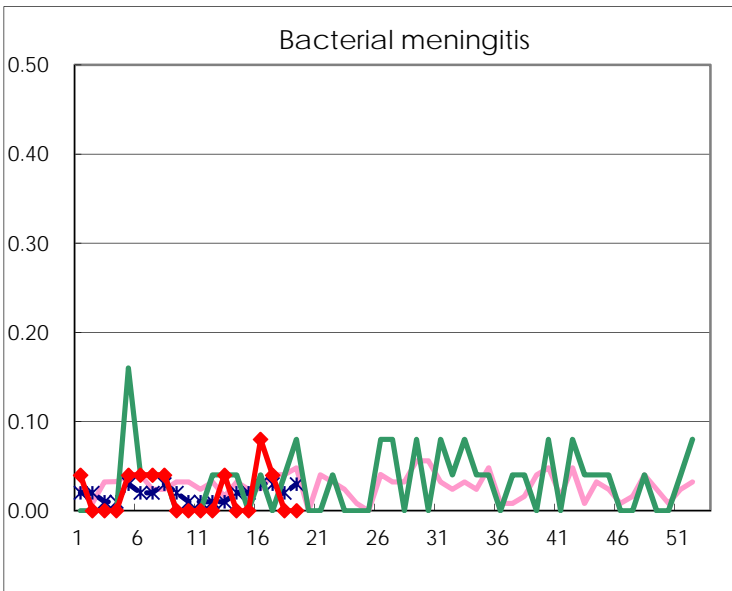
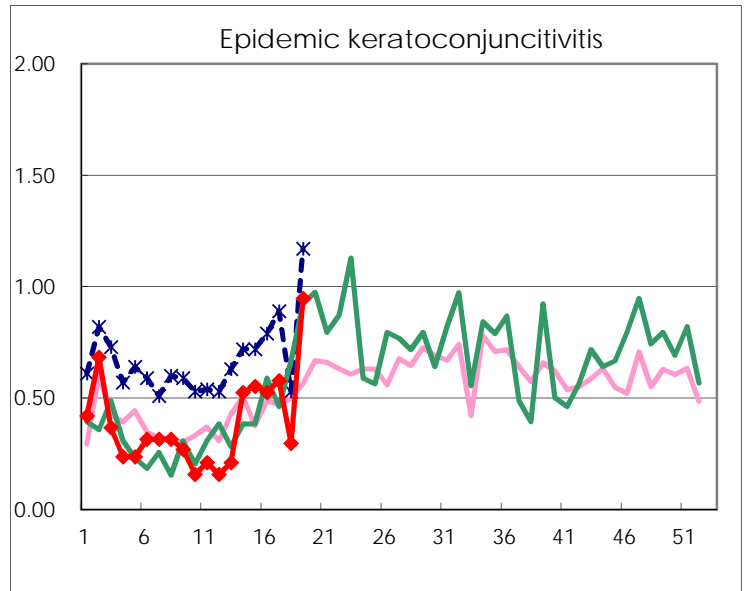
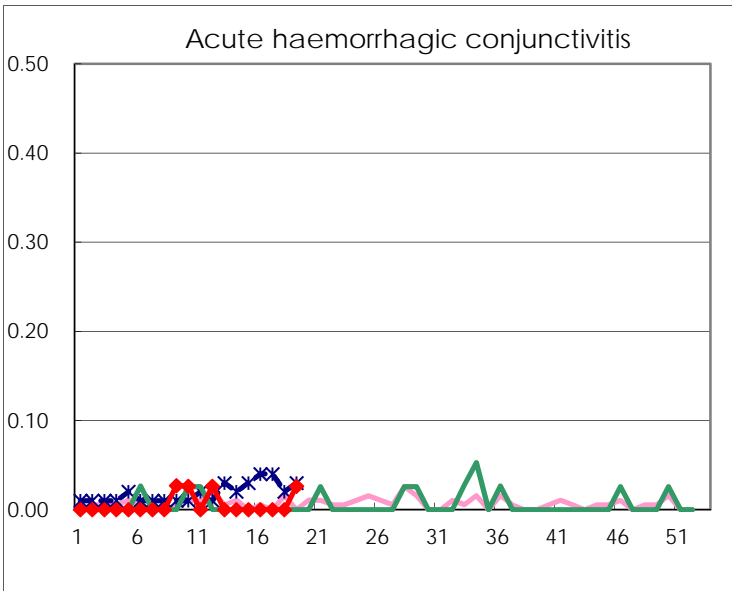
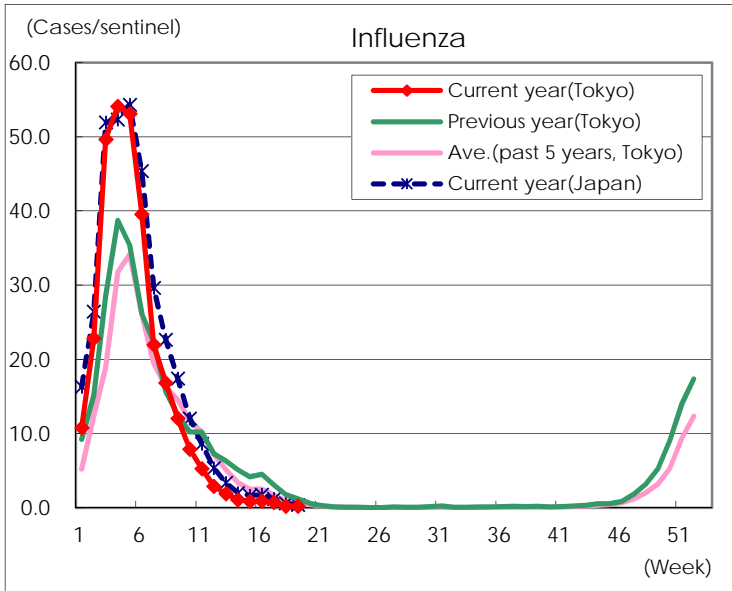
Diseases	Tokyo				
	16th	17th	18th	19th	/sentinel
Respiratory syncytial virus infection	90	74	41	33	0.13
Pharyngoconjunctival fever	64	100	68	116	0.44
Group A streptococcal pharyngitis	788	909	357	907	3.45
Infectious gastroenteritis	1,715	1,777	840	1,812	6.89
Chickenpox	84	71	58	121	0.46
Hand, foot, and mouth disease	22	29	15	27	0.10
Erythema infectiosum	64	101	72	99	0.38
Exanthem subitum	149	195	106	214	0.81
Herpangina	1	5	8	6	0.02
Mumps	31	24	12	28	0.11
Kawasaki disease	4	6	3	3	0.01
Cold with exanthems	13	14	5	25	0.10
Influenza	374	299	96	93	0.22
Acute hemorrhagic conjunctivitis				1	0.03
Epidemic keratoconjunctivitis	20	22	11	36	0.95
Bacterial meningitis	2	1			
Aseptic meningitis				1	0.04
<i>Mycoplasma pneumoniae</i>	1	1		2	0.08
Chlamydial pneumonia (excluding psittacosis)		1		2	0.08
Infectious gastroenteritis (only by Rotavirus)	8	6	6	7	0.29
Influenza-Associated Hospitalizations	7	5	3	2	0.08

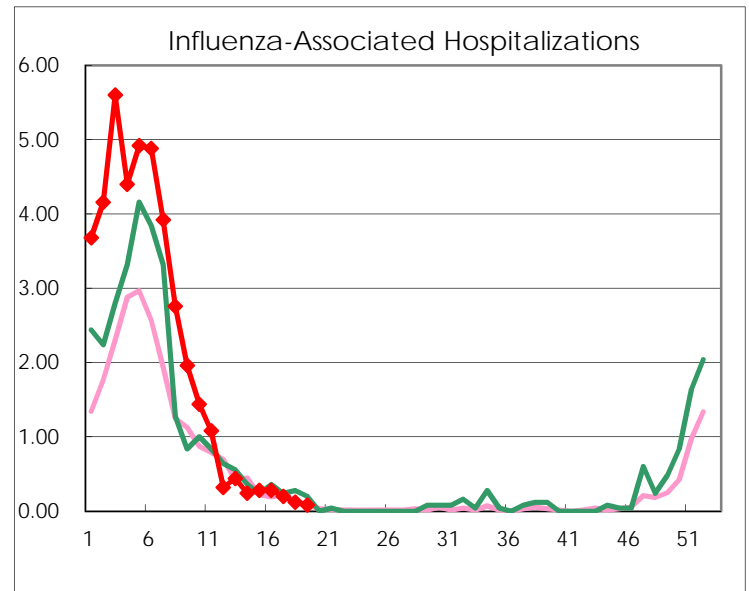
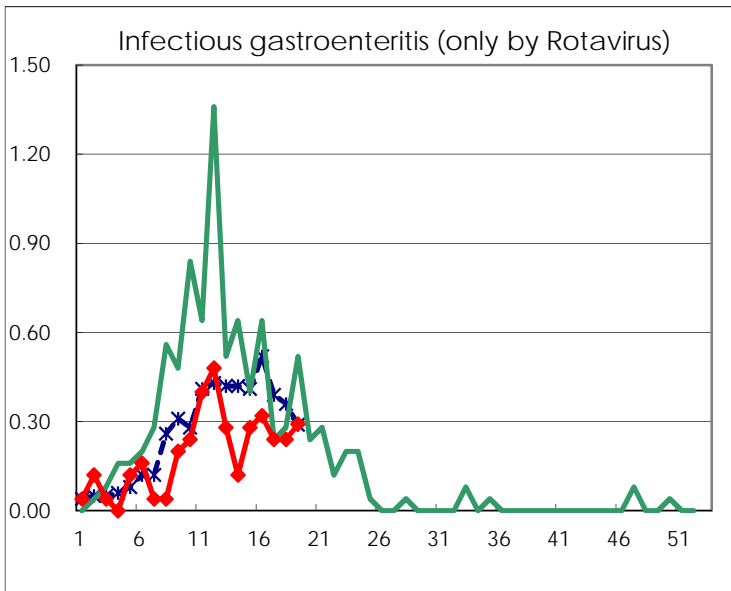
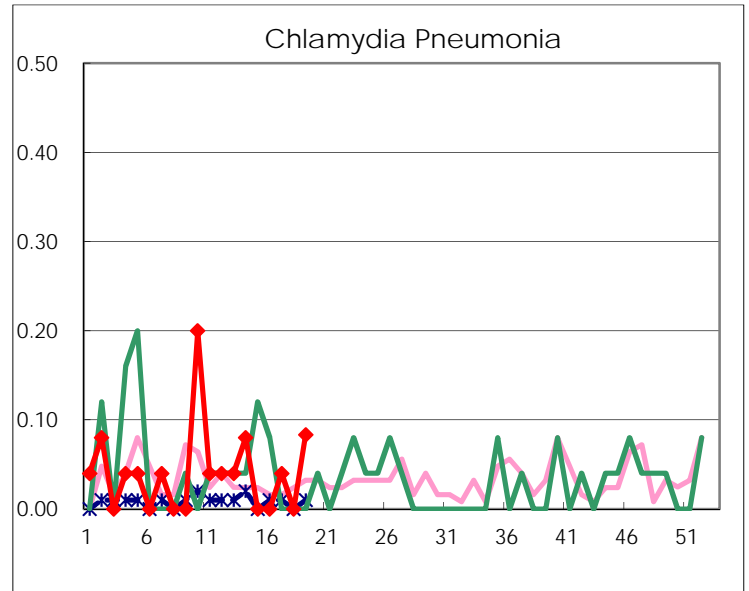
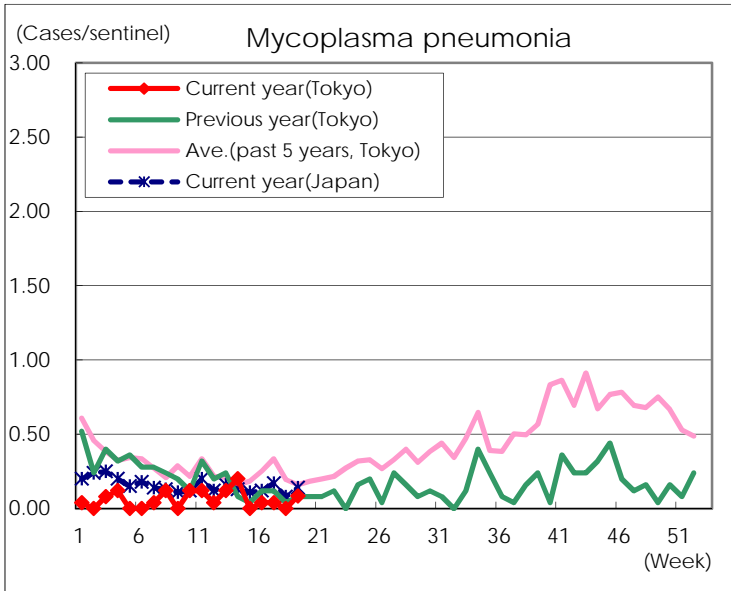
(Blank means 0.)

Disease Trend Graph (weekly reported cases per sentinel in comparison)









Number of sentinel facilities for weekly reporting		
Types of sentinels	Number of sentinels	Sentinels having reported
Pediatric	264	263
Influenza	419	417
Ophthalmic	39	38
Specially-designated	25	24