

24 May 2018 / Number 20

Surveillance System in Tokyo, Japan

The infectious diseases which all physicians must report

All physicians must report to health centers the incidence of the diseases which are shown at page one. Health centers electronically report the individual cases to Tokyo Metropolitan Infectious Disease Surveillance Center.

The infectious diseases required to be reported by the sentinels

The numbers of patients who visit the sentinel clinics or hospitals during a week are reported to health centers in Tokyo. And they electronically report the numbers to Tokyo Metropolitan Infectious Disease Surveillance Center. We have about 500 sentinel clinics and hospitals in Tokyo.

Tokyo Metropolitan Institute of Public Health

TEL:81-3-3363-3213 FAX:81-3-5332-7365

e-mail:www@tokyo-eiken.go.jp

URL:idsc.tokyo-eiken.go.jp/

Number of patients with the diseases which all physicians must report

Category	Diseases	Tokyo					Japan	
		17th	18th	19th	20th	Cum 2018	20th	Cum 2018
I	Ebola hemorrhagic fever							
	Crimean-Congo hemorrhagic fever							
	Smallpox							
	South American hemorrhagic fever							
	Plague							
	Marburg disease							
	Lassa fever							
II	Acute poliomyelitis							
	Tuberculosis	93	29	64	56	1,246	335	7,807
	Diphtheria							
	Severe Acute Respiratory Syndrome(SARS)							
	Middle East Respiratory Syndrome (MERS)							
	Avian influenza H5N1							
	Avian influenza H7N9							
III	Cholera							2
	Shigellosis					16	2	71
	Enterohemorrhagic Escherichia coli infection	5	3	7	3	42	43	366
	Typhoid fever			1	1	5	1	18
	Paratyphoid fever	1				5		9
IV	Hepatitis E			6	1	31	6	152
	West Nile fever							
	Hepatitis A	10	10	10	21	154	28	296
	Echinococcosis							3
	Yellow fever							
	Psittacosis							3
	Omsk hemorrhagic fever							
	Relapsing fever							
	Kyasanur forest disease							
	Q fever							1
	Rabies							
	Coccidioidomycosis							
	Monkeypox							
	Zika virus infection							
	Severe Fever with Thrombocytopenia Syndrome						3	19
	Hemorrhagic fever with renal syndrome							
	Western equine encephalitis							
	Tick-borne encephalitis							
	Anthrax							
	Chikungunya fever							
	Scrub typhus(Tsutsugamushi disease)					4	4	62
	Dengue fever	1			2	18	8	46
	Eastern equine encephalitis							
	Avian influenza (excluding H5N1 and H7N9)							
	Nipah virus infection							
	Japanese spotted fever						3	36
	Japanese encephalitis							
	Hantavirus pulmonary syndrome							
	Herpes B virus infection							
	Glanders							
	Brucellosis							1
	Venezuelan equine encephalitis							
	Hendra virus infection							
	Epidemic typhus							
	Botulism					1		2
	Malaria					2		15
	Tularemia							
	Lyme disease							
	Lyssavirus infection(excluding rabies)							
	Rift valley fever							
	Melioidosis					1		1
Legionellosis	1		3	4	31	48	428	
Leptospirosis								
Rocky mountain spotted fever								

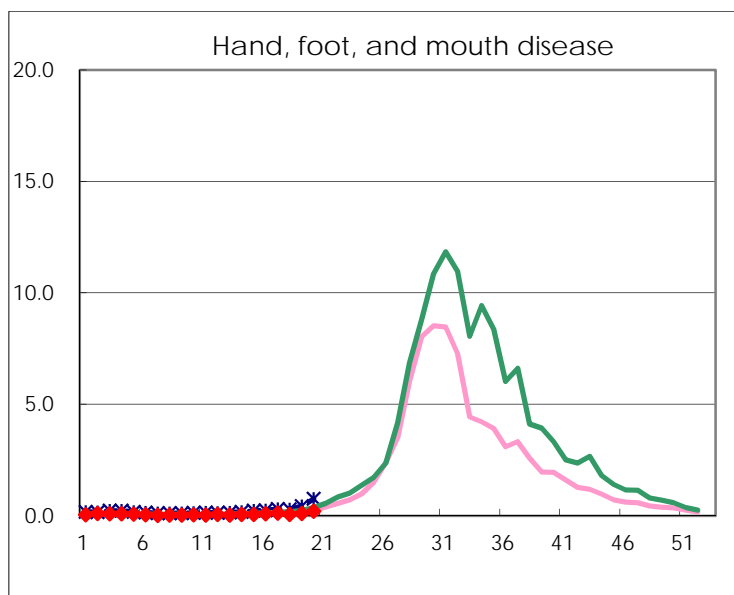
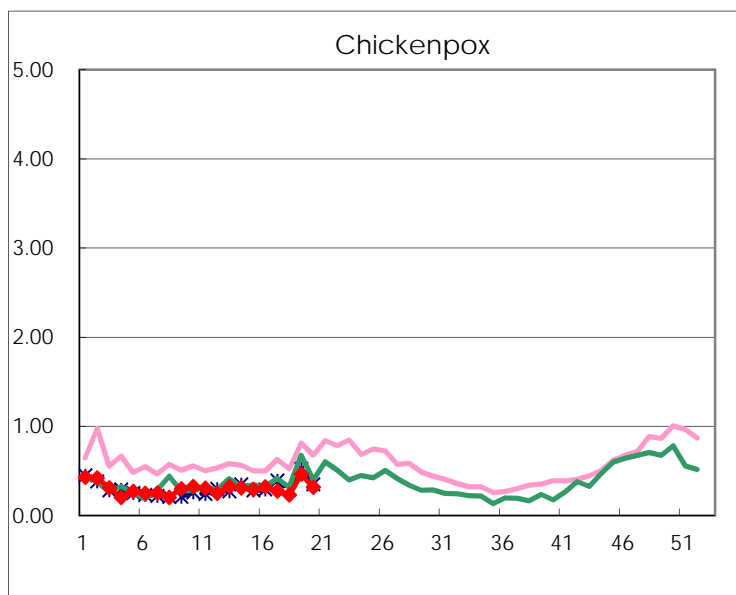
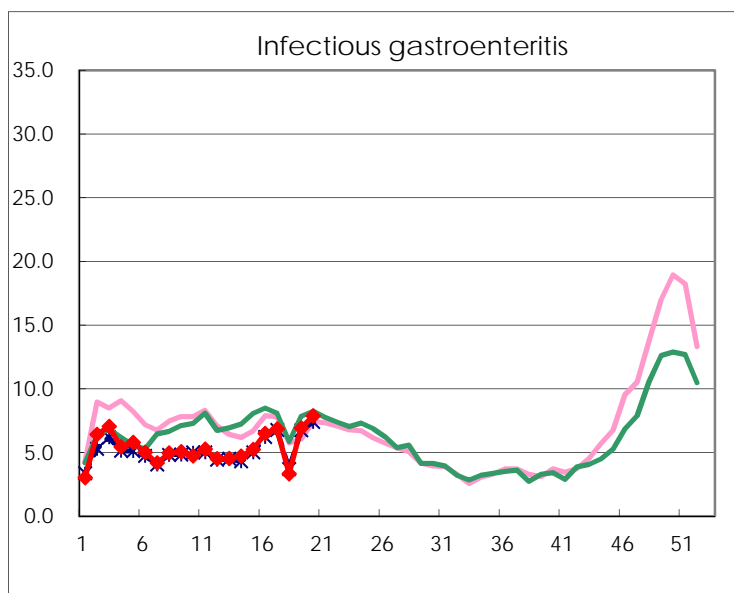
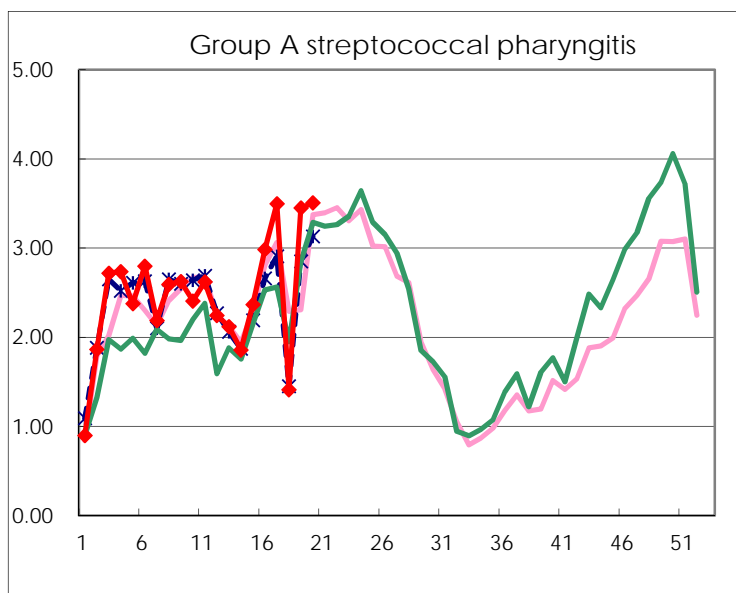
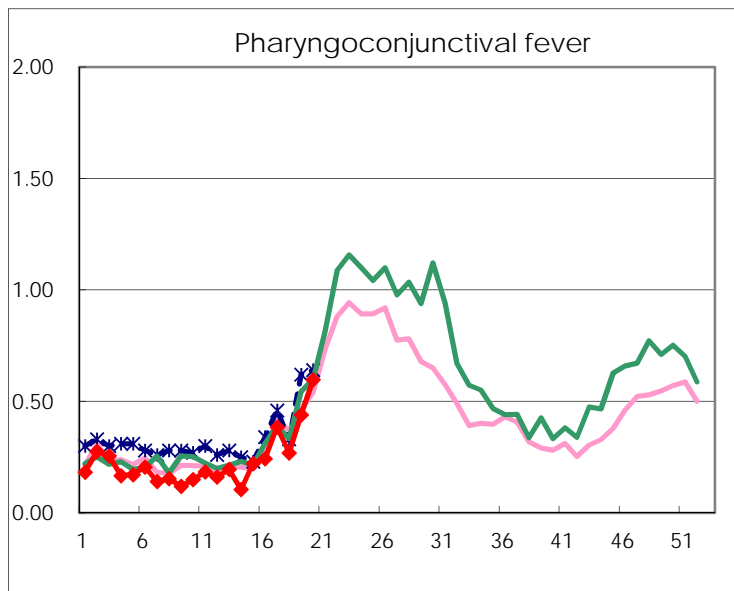
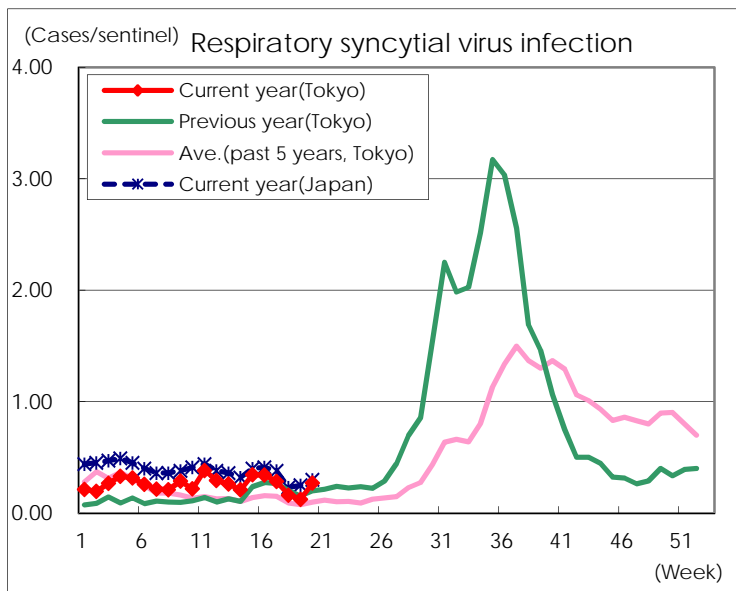
Category	Diseases	Tokyo					Japan	
		17th	18th	19th	20th	Cum 2018	20th	Cum 2018
V	Amebiasis	4	2	4	1	61	15	305
	Viral hepatitis(excluding hepatitis A and E)	2		1	1	13	3	66
	CRE infection	4	3	5	4	62	14	603
	Acute Flaccid Paralysis (excluding Acute poliomyelitis)		1			1	1	4
	Acute encephalitis(excluding JE and WNE)	1	2		1	32	7	316
	Cryptosporidiosis					1	1	7
	Creutzfeldt-Jakob disease				1	6	2	77
	Severe invasive streptococcal infections(TSLs)	3	2	4	1	47	10	322
	Acquired immunodeficiency syndrome (AIDS)	3	3	9	8	143	22	455
	Giardiasis					9	1	29
	Invasive <i>Haemophilus influenzae</i> disease	1	2	1	1	11	5	186
	Invasive meningococcal disease					4		15
	Invasive pneumococcal disease	13	5	9	17	195	73	1,633
	Varicella (limited to hospitalized case)	3		1	1	18	4	154
	Congenital rubella syndrome							
	Syphilis	39	20	37	30	613	93	2,307
	Disseminated cryptococcosis					9	4	67
	Tetanus					1	4	33
	Vancomycin-resistant <i>S. aureus</i> infection							
	Vancomycin-resistant <i>Enterococcus</i> infection					1		17
	Pertussis	12	9	7	13	148	134	1,556
	Rubella				1	2	5	22
Measles	1	1	1		11	16	162	
MDRA infection					2	1	8	

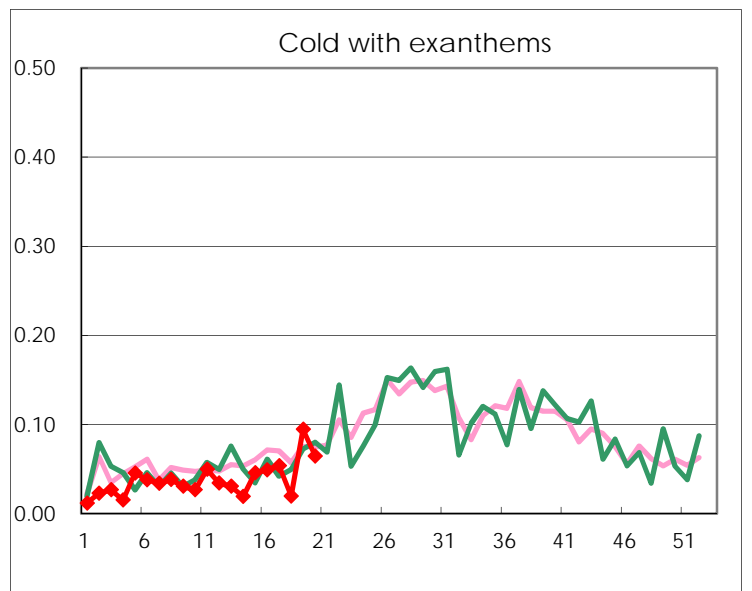
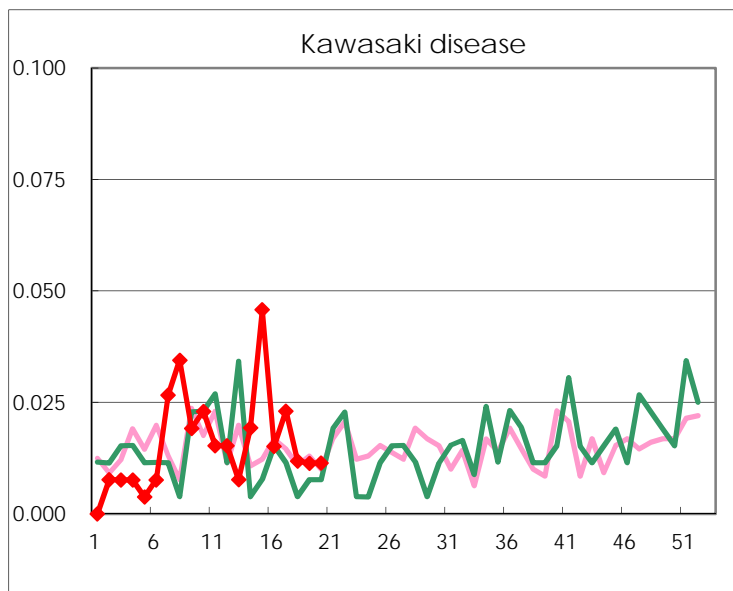
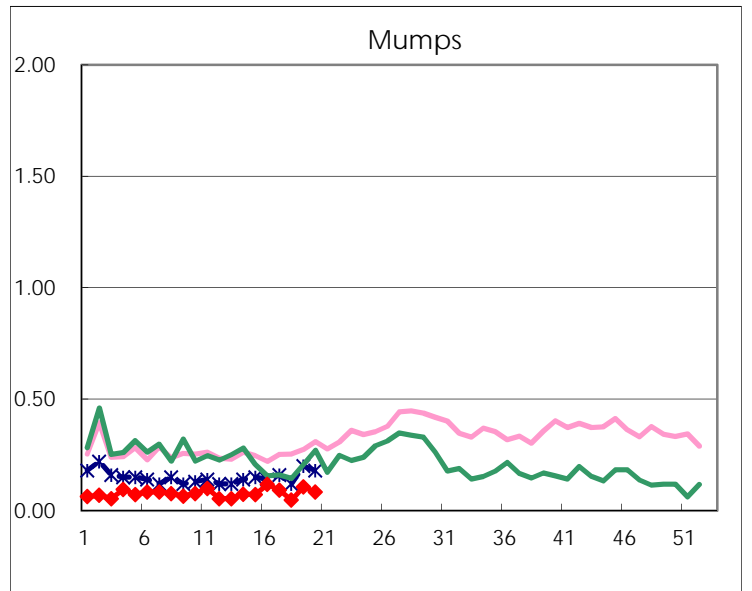
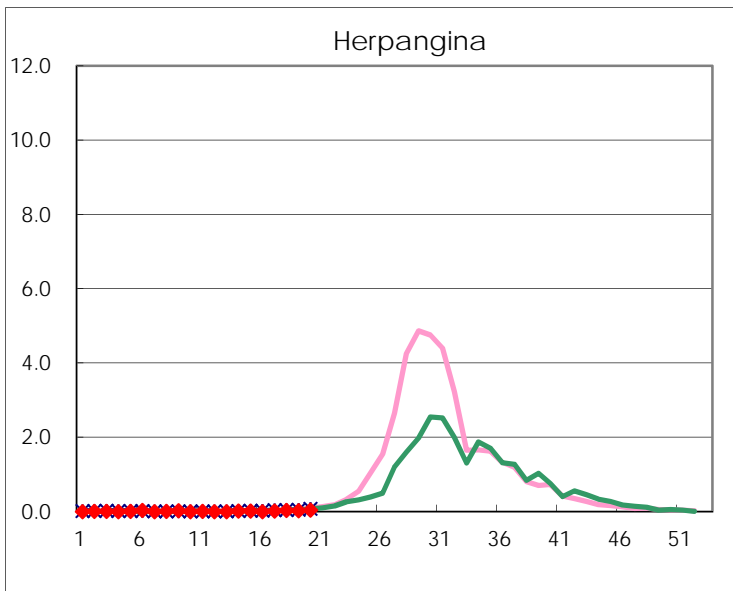
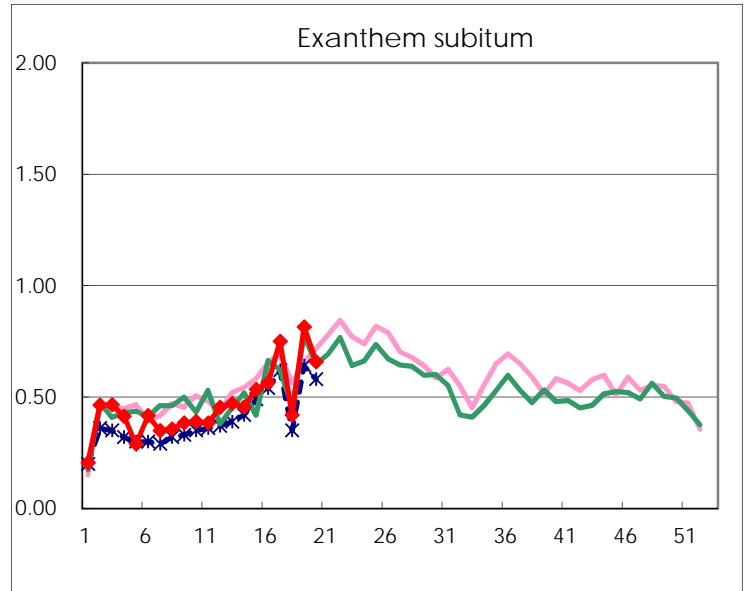
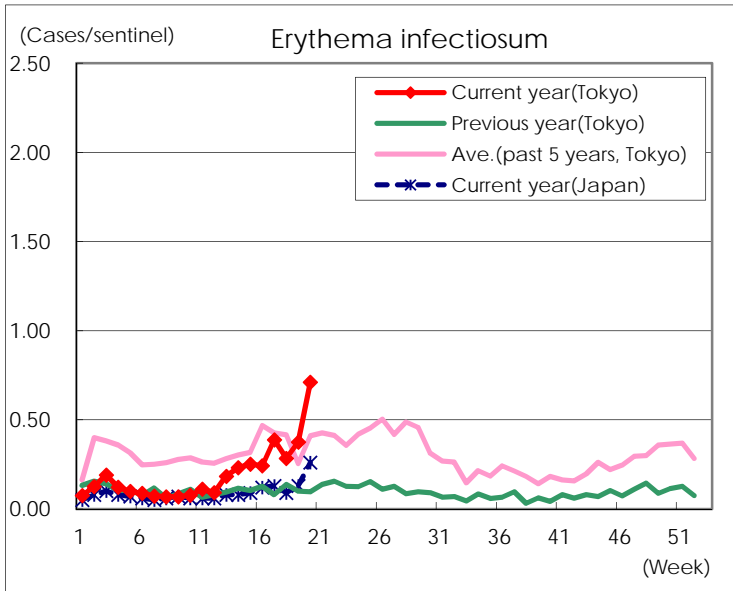
Number of patients with the diseases to be reported
by the designated clinics and hospitals

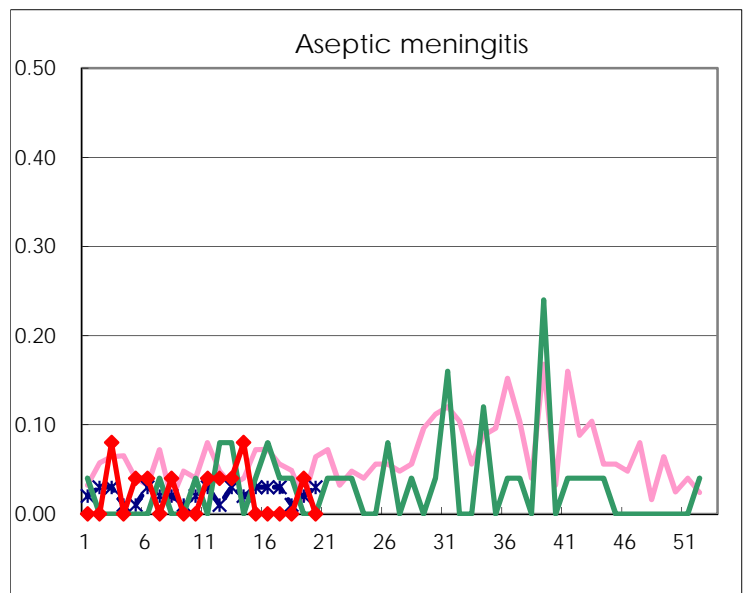
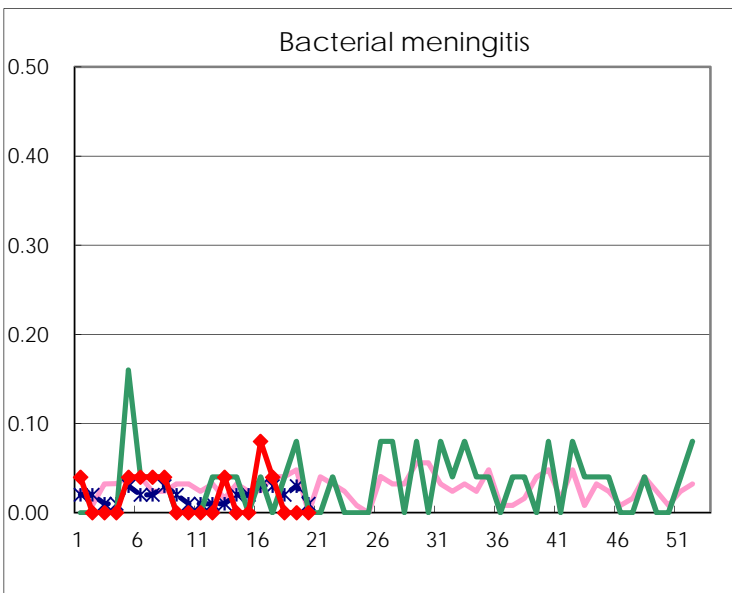
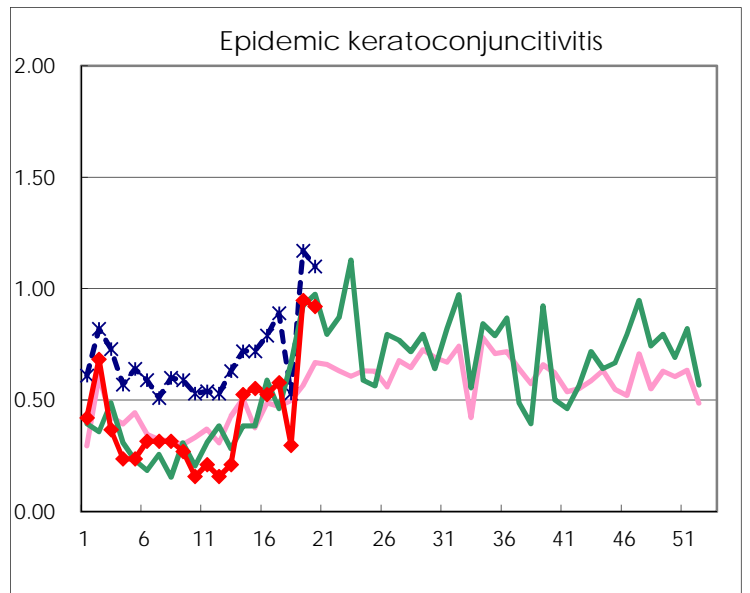
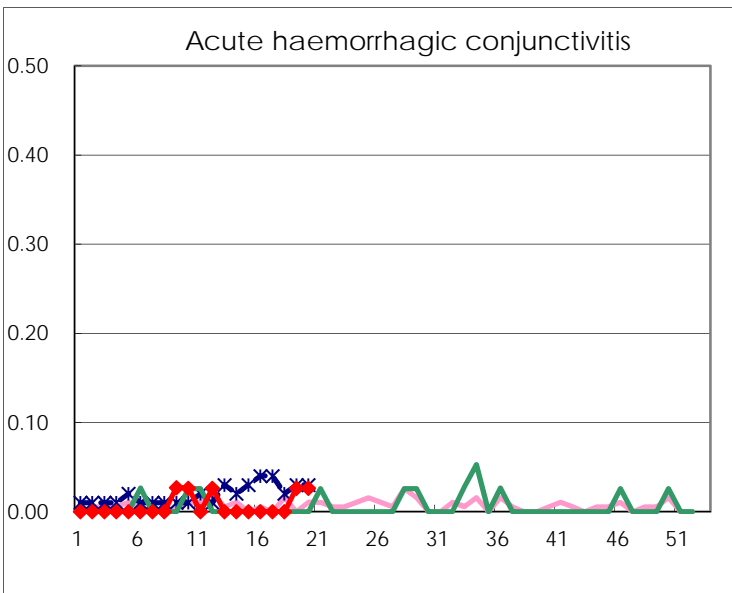
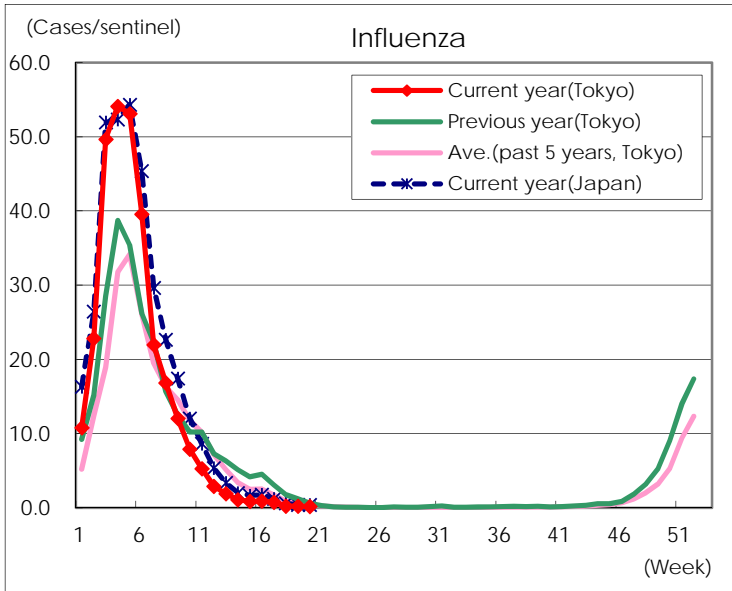
Diseases	Tokyo				
	17th	18th	19th	20th	/sentinel
Respiratory syncytial virus infection	74	41	33	71	0.27
Pharyngoconjunctival fever	100	68	116	157	0.60
Group A streptococcal pharyngitis	909	357	911	923	3.51
Infectious gastroenteritis	1,777	840	1,822	2,067	7.86
Chickenpox	71	58	122	83	0.32
Hand, foot, and mouth disease	29	15	28	52	0.20
Erythema infectiosum	101	72	99	187	0.71
Exanthem subitum	195	106	215	173	0.66
Herpangina	5	8	6	11	0.04
Mumps	24	12	28	22	0.08
Kawasaki disease	6	3	3	3	0.01
Cold with exanthems	14	5	25	17	0.06
Influenza	299	96	93	74	0.18
Acute hemorrhagic conjunctivitis			1	1	0.03
Epidemic keratoconjunctivitis	22	11	36	35	0.92
Bacterial meningitis	1				
Aseptic meningitis			1		
<i>Mycoplasma pneumoniae</i>	1		2	3	0.12
Chlamydial pneumonia (excluding psittacosis)	1		2	1	0.04
Infectious gastroenteritis (only by Rotavirus)	6	6	8	2	0.08
Influenza-Associated Hospitalizations	5	3	2	2	0.08

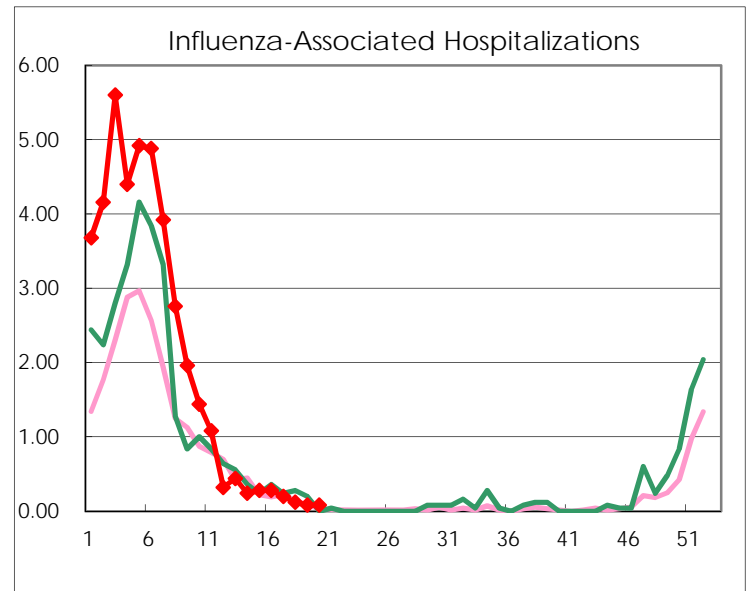
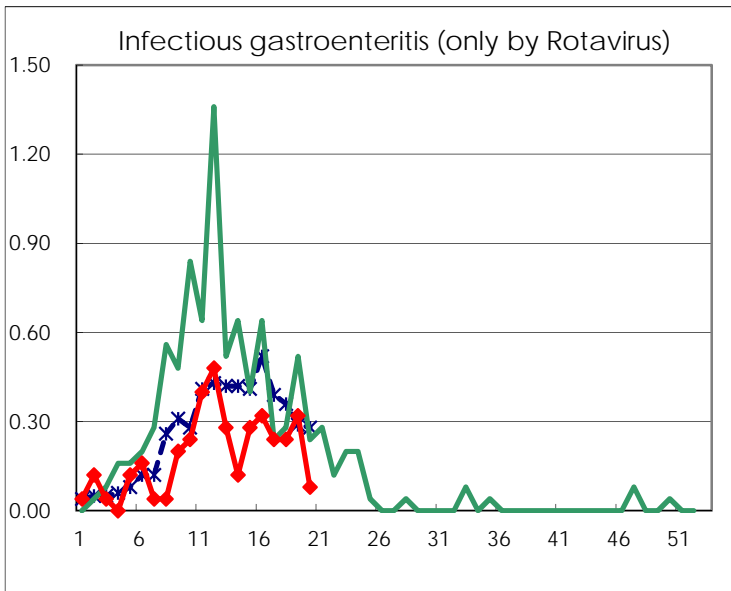
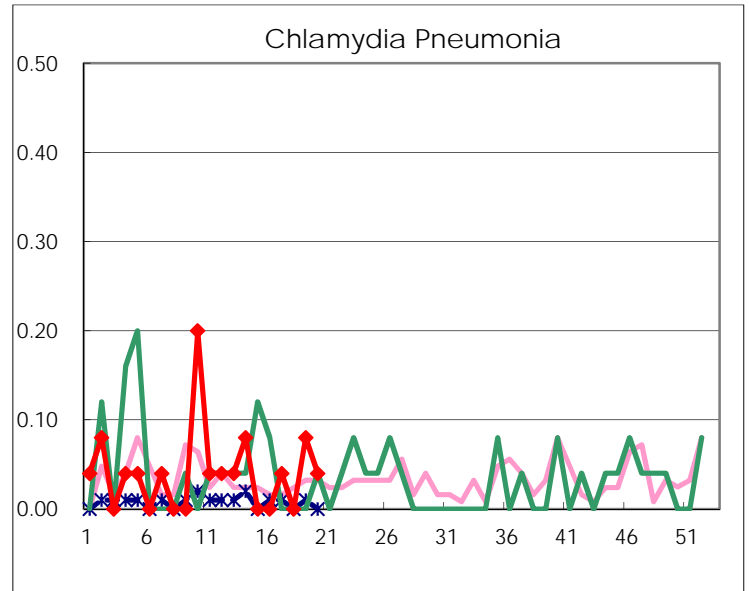
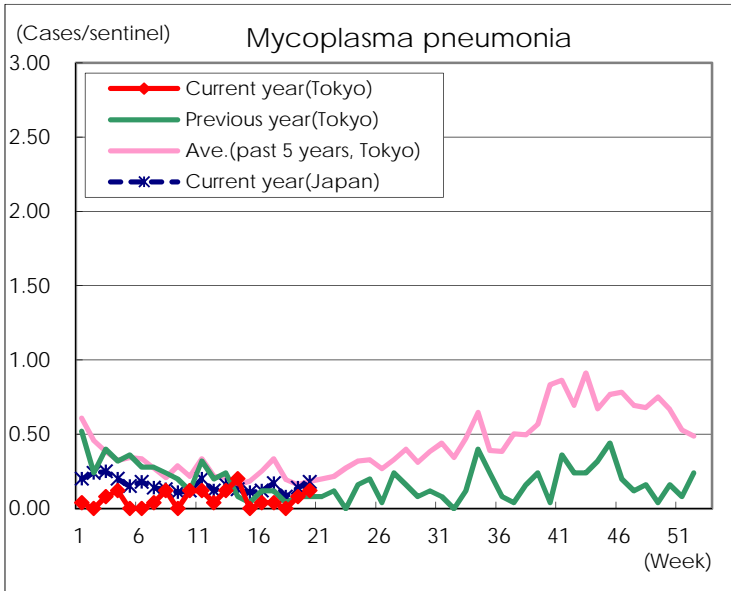
(Blank means 0.)

Disease Trend Graph (weekly reported cases per sentinel in comparison)









Number of sentinel facilities for weekly reporting		
Types of sentinels	Number of sentinels	Sentinels having reported
Pediatric	264	263
Influenza	419	415
Ophthalmic	39	38
Specially-designated	25	25