

**31 May 2018 / Number 21**

## Surveillance System in Tokyo, Japan

The infectious diseases which all physicians must report

All physicians must report to health centers the incidence of the diseases which are shown at page one. Health centers electronically report the individual cases to Tokyo Metropolitan Infectious Disease Surveillance Center.

The infectious diseases required to be reported by the sentinels

The numbers of patients who visit the sentinel clinics or hospitals during a week are reported to health centers in Tokyo. And they electronically report the numbers to Tokyo Metropolitan Infectious Disease Surveillance Center. We have about 500 sentinel clinics and hospitals in Tokyo.

Tokyo Metropolitan Institute of Public Health

TEL:81-3-3363-3213 FAX:81-3-5332-7365

e-mail:[www@tokyo-eiken.go.jp](mailto:www@tokyo-eiken.go.jp)

URL:[idsc.tokyo-eiken.go.jp/](http://idsc.tokyo-eiken.go.jp/)

---

Number of patients with the diseases which all physicians must report

Category	Diseases	Tokyo					Japan	
		18th	19th	20th	21st	Cum 2018	21st	Cum 2018
I	Ebola hemorrhagic fever							
	Crimean-Congo hemorrhagic fever							
	Smallpox							
	South American hemorrhagic fever							
	Plague							
	Marburg disease							
	Lassa fever							
II	Acute poliomyelitis							
	Tuberculosis	30	69	62	58	1,316	309	8,204
	Diphtheria							
	Severe Acute Respiratory Syndrome(SARS)							
	Middle East Respiratory Syndrome (MERS)							
	Avian influenza H5N1							
	Avian influenza H7N9							
III	Cholera							2
	Shigellosis				1	17	1	73
	Enterohemorrhagic Escherichia coli infection	3	7	5	9	53	90	464
	Typhoid fever		1	1		5		18
	Paratyphoid fever					5		9
IV	Hepatitis E		6	1	1	32	8	160
	West Nile fever							
	Hepatitis A	10	10	21	17	171	26	331
	Echinococcosis						1	4
	Yellow fever							
	Psittacosis							3
	Omsk hemorrhagic fever							
	Relapsing fever							
	Kyasanur forest disease							
	Q fever							1
	Rabies							
	Coccidioidomycosis							
	Monkeypox							
	Zika virus infection							
	Severe Fever with Thrombocytopenia Syndrome						5	24
	Hemorrhagic fever with renal syndrome							
	Western equine encephalitis							
	Tick-borne encephalitis							
	Anthrax							
	Chikungunya fever							
	Scrub typhus(Tsutsugamushi disease)					4	7	70
	Dengue fever			2		18	3	49
	Eastern equine encephalitis							
	Avian influenza (excluding H5N1 and H7N9)							
	Nipah virus infection							
	Japanese spotted fever						7	48
	Japanese encephalitis							
	Hantavirus pulmonary syndrome							
	Herpes B virus infection							
	Glanders							
	Brucellosis							1
	Venezuelan equine encephalitis							
	Hendra virus infection							
	Epidemic typhus							
Botulism					1		2	
Malaria				1	3	2	17	
Tularemia								
Lyme disease								
Lyssavirus infection(excluding rabies)								
Rift valley fever								
Melioidosis					1		1	
Legionellosis		3	4	3	34	47	487	
Leptospirosis								
Rocky mountain spotted fever								

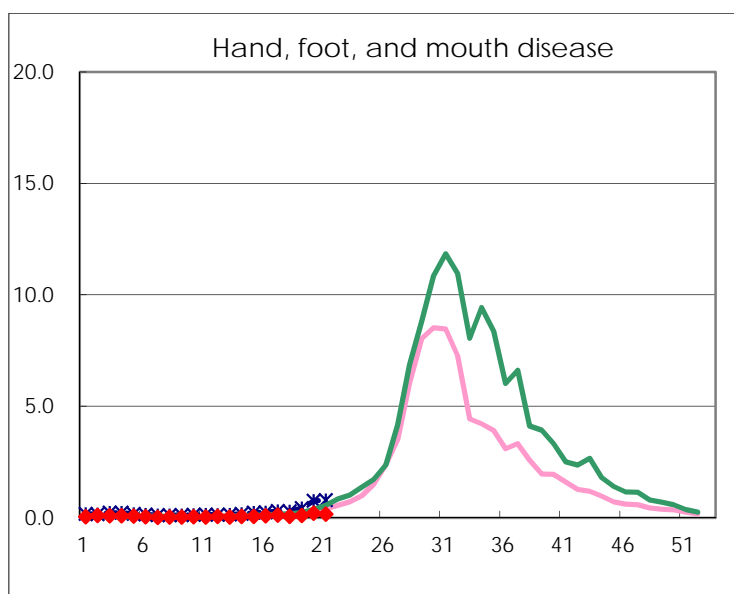
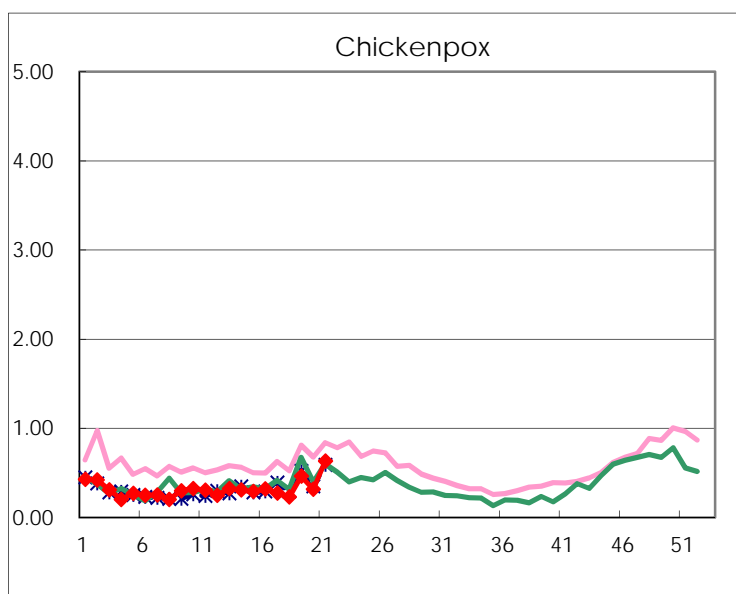
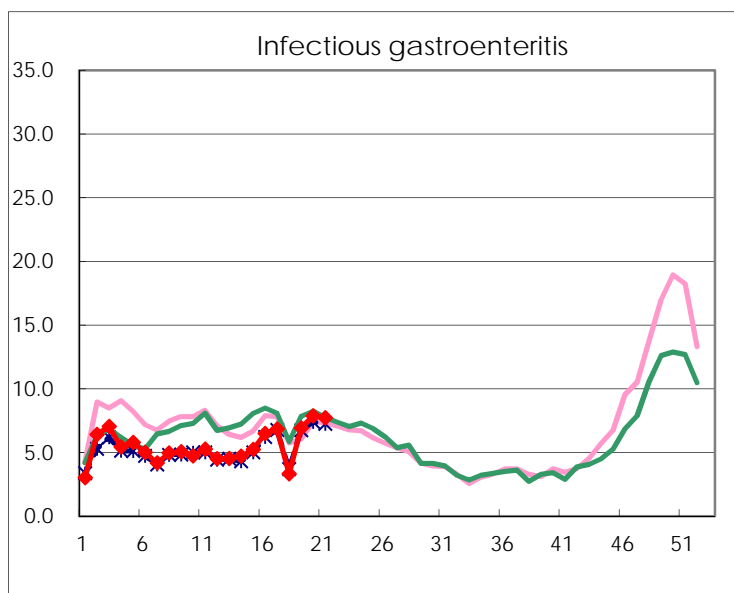
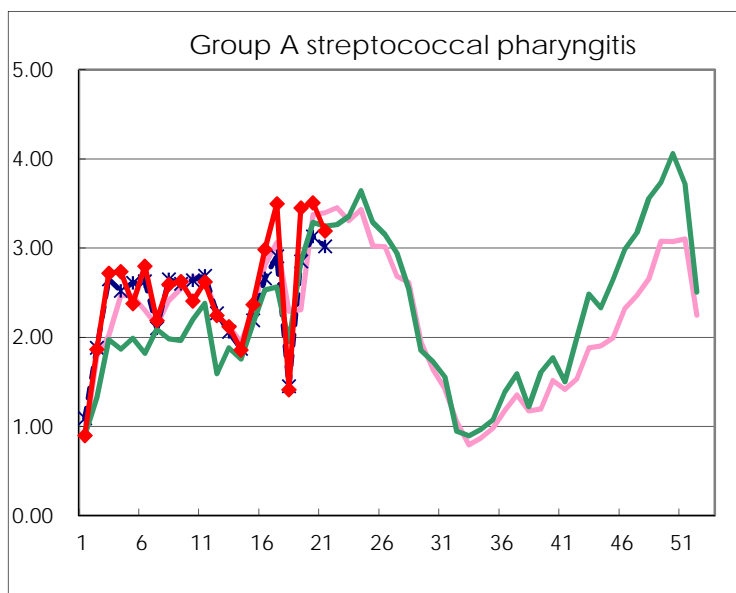
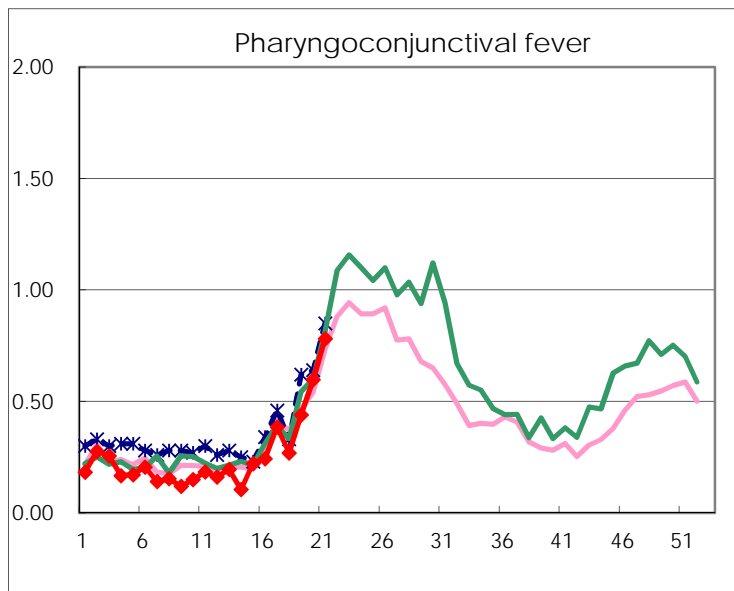
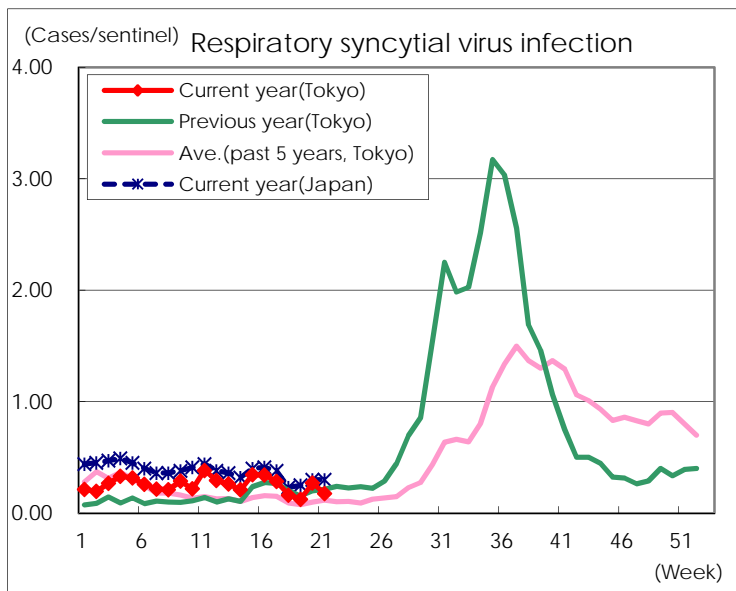
Category	Diseases	Tokyo					Japan	
		18th	19th	20th	21st	Cum 2018	21st	Cum 2018
V	Amebiasis	2	4	1	1	62	11	320
	Viral hepatitis(excluding hepatitis A and E)		1	1	2	15	6	74
	CRE infection	3	5	4	5	67	20	634
	Acute Flaccid Paralysis (excluding Acute poliomyelitis)	1			1	2	1	6
	Acute encephalitis(excluding JE and WNE)	2		1	2	34	6	327
	Cryptosporidiosis					1		7
	Creutzfeldt-Jakob disease			1	1	7	2	82
	Severe invasive streptococcal infections(TSLs)	2	4	1	1	48	6	333
	Acquired immunodeficiency syndrome (AIDS)	3	9	8	9	152	10	478
	Giardiasis				1	10	3	32
	Invasive <i>Haemophilus influenzae</i> disease	2	1	3		13	5	198
	Invasive meningococcal disease			1		5		17
	Invasive pneumococcal disease	5	9	17	7	202	55	1,723
	Varicella (limited to hospitalized case)		1	1	1	19	5	159
	Congenital rubella syndrome							
	Syphilis	21	37	36	35	656	75	2,444
	Disseminated cryptococcosis				1	10	1	70
	Tetanus					1	3	37
	Vancomycin-resistant <i>S. aureus</i> infection							
	Vancomycin-resistant <i>Enterococcus</i> infection					1	2	21
	Pertussis	9	7	14	9	158	131	1,739
	Rubella			2	2	5	4	32
	Measles	1	1			11	3	164
MDRA infection					2		8	

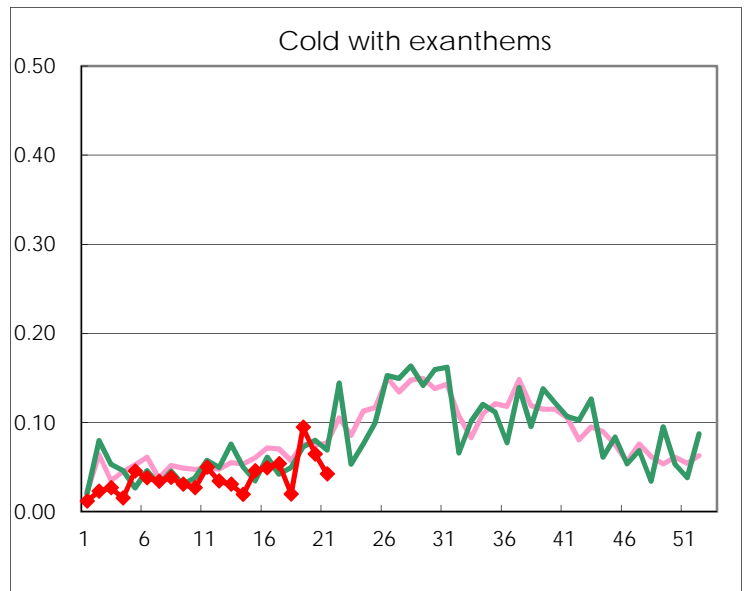
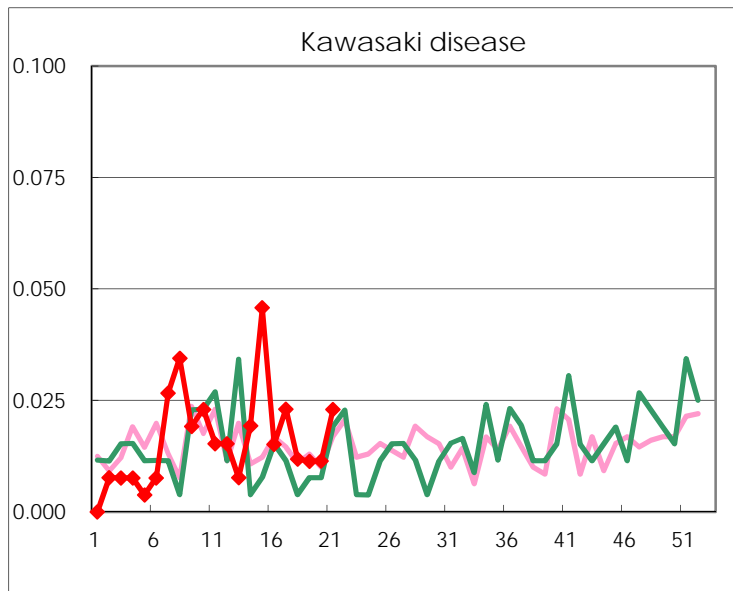
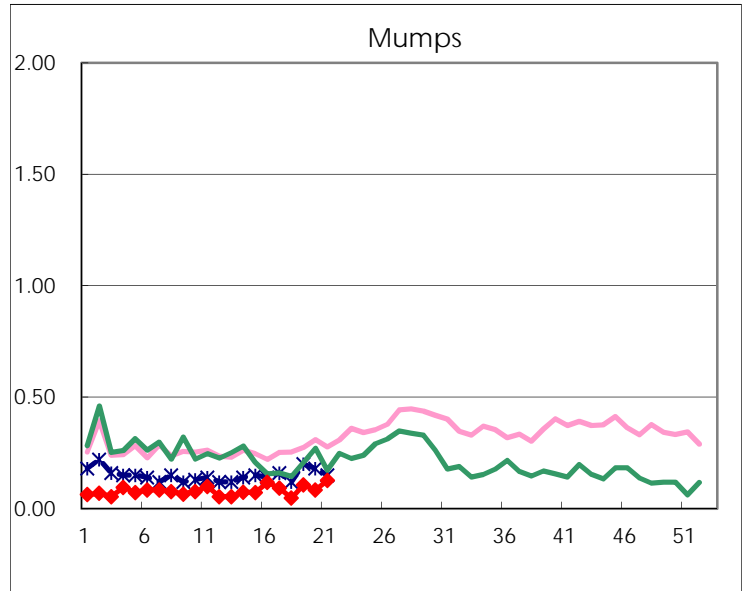
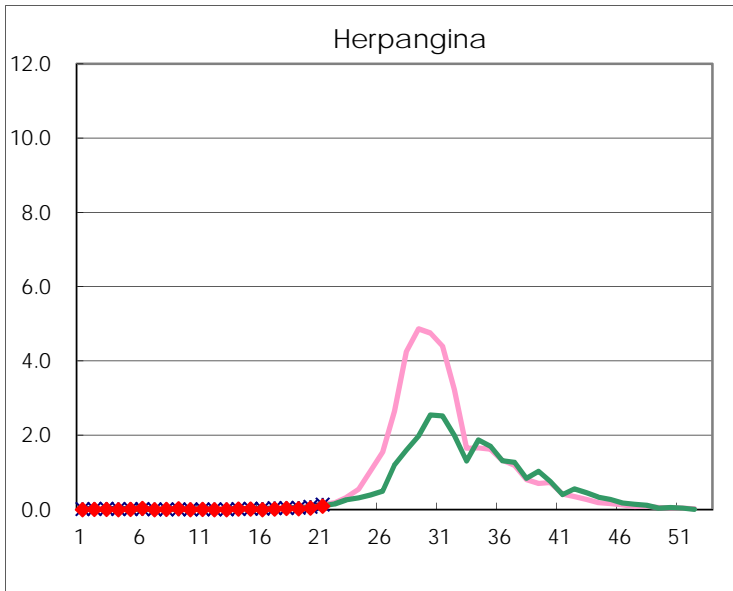
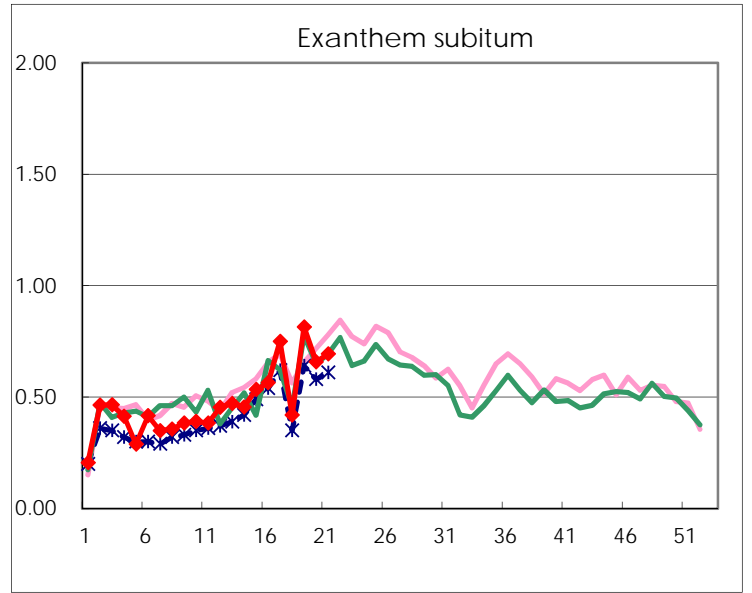
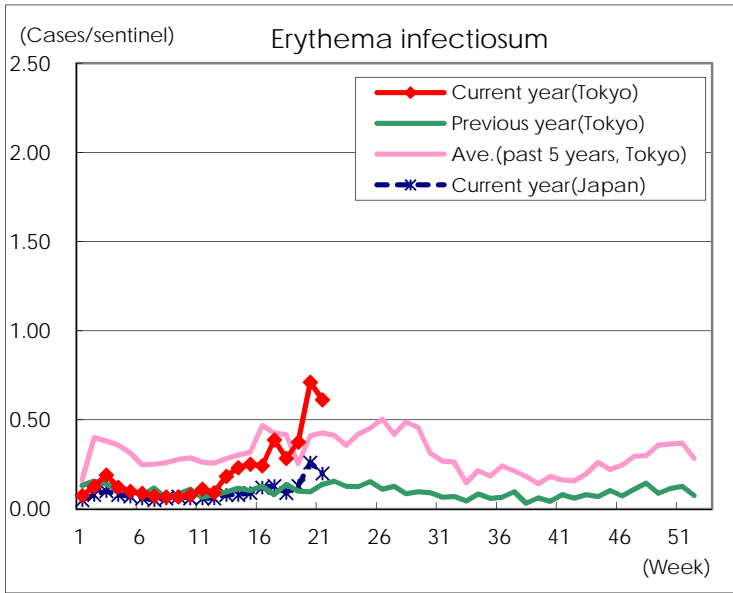
Number of patients with the diseases to be reported  
by the designated clinics and hospitals

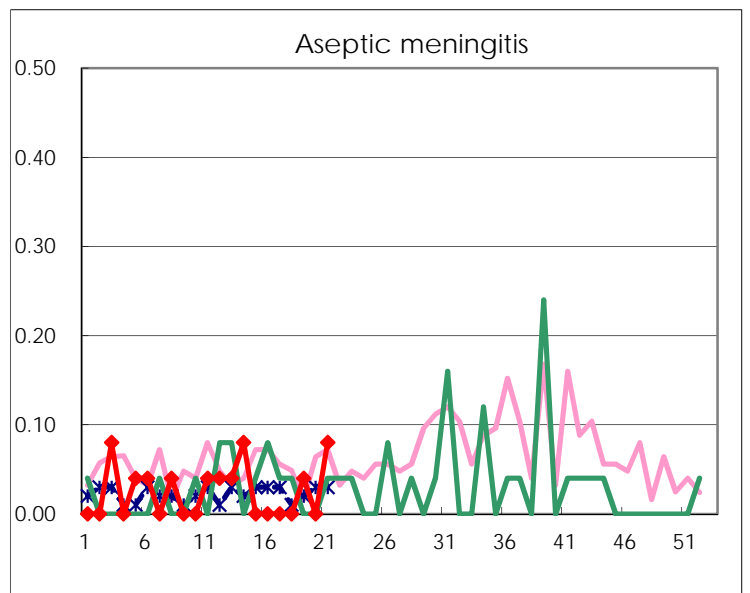
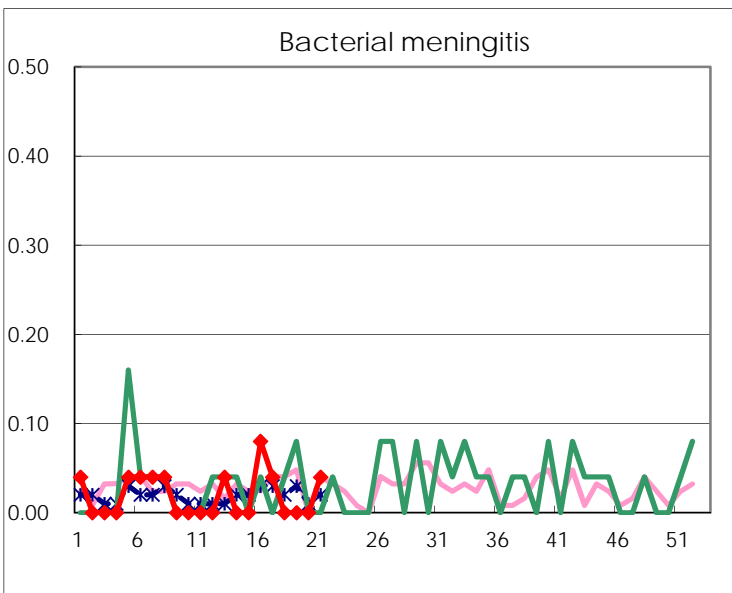
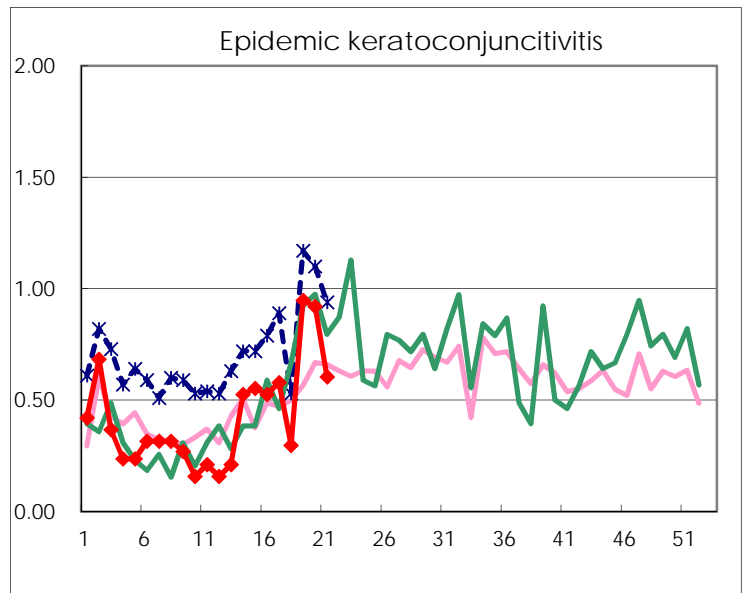
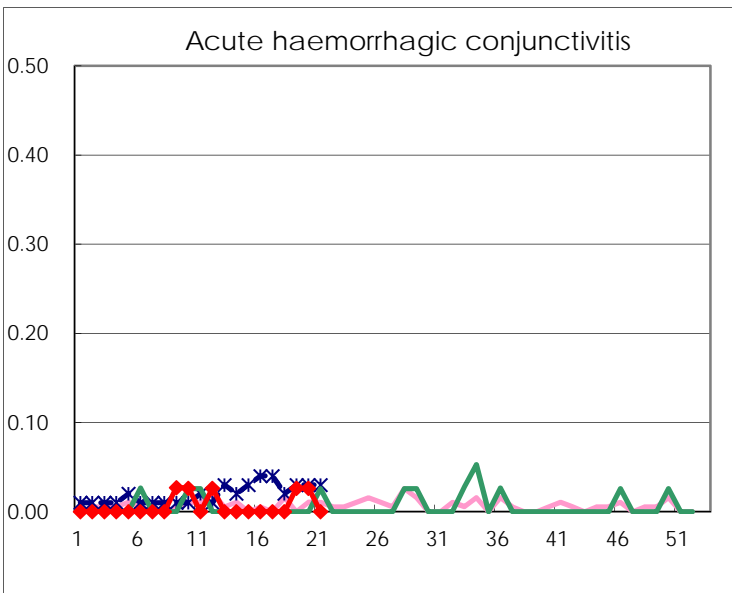
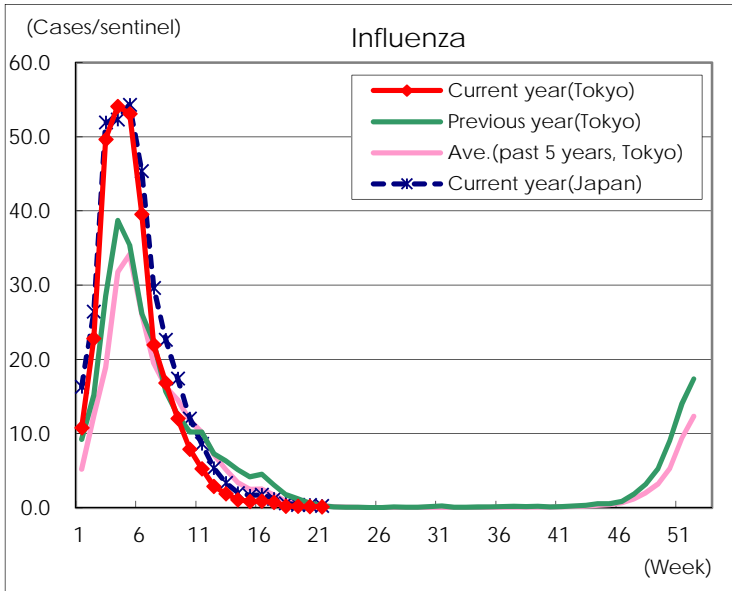
Diseases	Tokyo				
	18th	19th	20th	21st	/sentinel
Respiratory syncytial virus infection	41	33	71	46	0.18
Pharyngoconjunctival fever	68	116	157	204	0.78
Group A streptococcal pharyngitis	357	911	923	833	3.19
Infectious gastroenteritis	840	1,822	2,067	2,017	7.73
Chickenpox	58	122	83	165	0.63
Hand, foot, and mouth disease	15	28	52	42	0.16
Erythema infectiosum	72	99	187	160	0.61
Exanthem subitum	106	215	173	181	0.69
Herpangina	8	6	11	26	0.10
Mumps	12	28	22	33	0.13
Kawasaki disease	3	3	3	6	0.02
Cold with exanthems	5	25	17	11	0.04
Influenza	96	93	74	66	0.16
Acute hemorrhagic conjunctivitis		1	1		
Epidemic keratoconjunctivitis	11	36	35	23	0.61
Bacterial meningitis				1	0.04
Aseptic meningitis		1		2	0.08
<i>Mycoplasma pneumoniae</i>		2	3	1	0.04
Chlamydial pneumonia (excluding psittacosis)		2	1		
Infectious gastroenteritis (only by Rotavirus)	6	8	2	3	0.12
Influenza-Associated Hospitalizations	3	2	2		

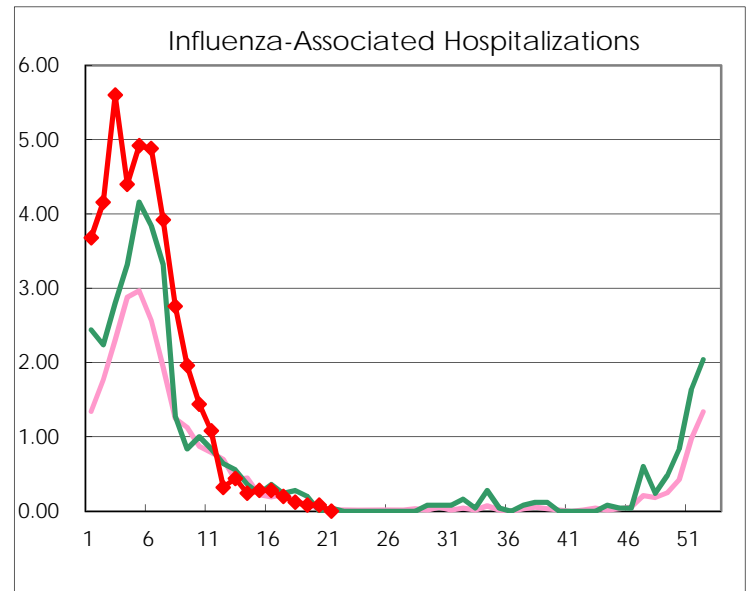
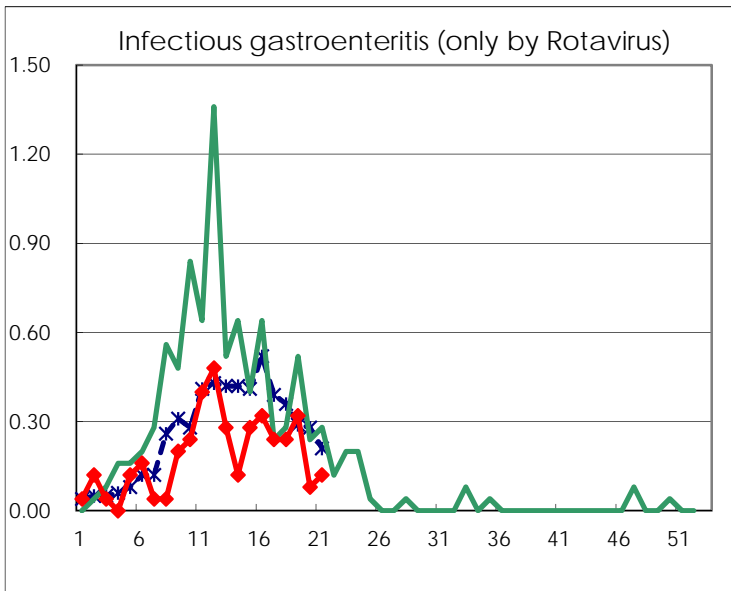
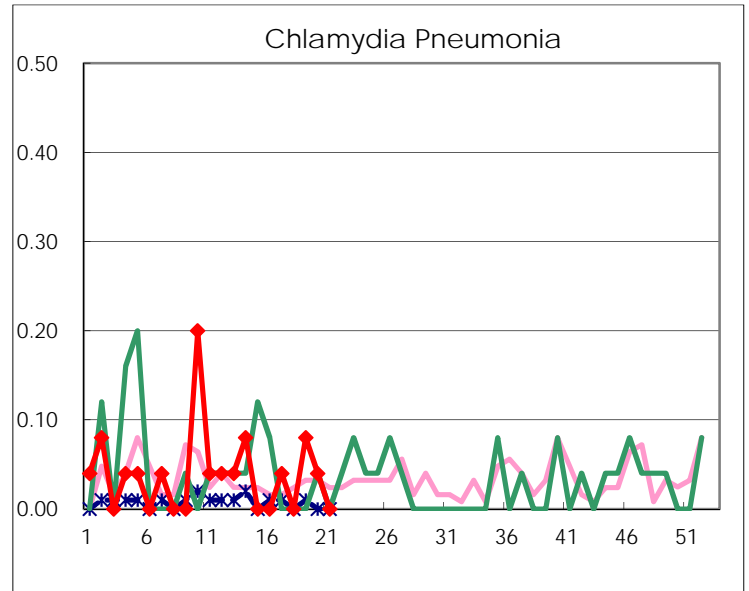
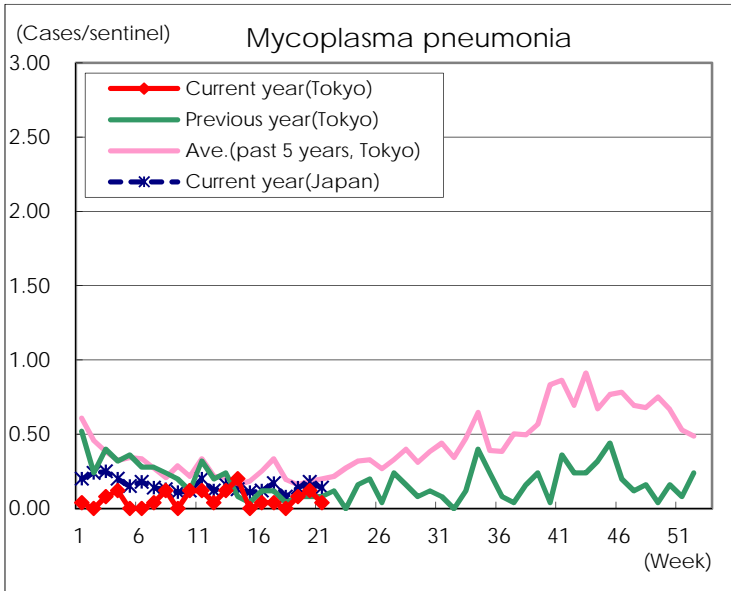
( Blank means 0. )

# Disease Trend Graph (weekly reported cases per sentinel in comparison)









Number of sentinel facilities for weekly reporting		
Types of sentinels	Number of sentinels	Sentinels having reported
Pediatric	264	261
Influenza	419	415
Ophthalmic	39	38
Specially-designated	25	25