

**7 June 2018 / Number 22**

## Surveillance System in Tokyo, Japan

The infectious diseases which all physicians must report

All physicians must report to health centers the incidence of the diseases which are shown at page one. Health centers electronically report the individual cases to Tokyo Metropolitan Infectious Disease Surveillance Center.

The infectious diseases required to be reported by the sentinels

The numbers of patients who visit the sentinel clinics or hospitals during a week are reported to health centers in Tokyo. And they electronically report the numbers to Tokyo Metropolitan Infectious Disease Surveillance Center. We have about 500 sentinel clinics and hospitals in Tokyo.

Tokyo Metropolitan Institute of Public Health

TEL:81-3-3363-3213 FAX:81-3-5332-7365

e-mail:[www@tokyo-eiken.go.jp](mailto:www@tokyo-eiken.go.jp)

URL:[idsc.tokyo-eiken.go.jp/](http://idsc.tokyo-eiken.go.jp/)

---

Number of patients with the diseases which all physicians must report

Category	Diseases	Tokyo					Japan	
		19th	20th	21st	22nd	Cum 2018	22nd	Cum 2018
I	Ebola hemorrhagic fever							
	Crimean-Congo hemorrhagic fever							
	Smallpox							
	South American hemorrhagic fever							
	Plague							
	Marburg disease							
	Lassa fever							
II	Acute poliomyelitis							
	Tuberculosis	69	63	60	75	1,394	333	8,651
	Diphtheria							
	Severe Acute Respiratory Syndrome(SARS)							
	Middle East Respiratory Syndrome (MERS)							
	Avian influenza H5N1							
	Avian influenza H7N9							
III	Cholera							2
	Shigellosis			1	1	18	3	78
	Enterohemorrhagic Escherichia coli infection	7	5	8	7	59	87	558
	Typhoid fever	1	1			5		18
	Paratyphoid fever				1	6	1	10
IV	Hepatitis E	6	1	1	2	34	7	168
	West Nile fever							
	Hepatitis A	10	21	18	10	182	17	358
	Echinococcosis							4
	Yellow fever							
	Psittacosis							3
	Omsk hemorrhagic fever							
	Relapsing fever							
	Kyasanur forest disease							
	Q fever							1
	Rabies							
	Coccidioidomycosis							
	Monkeypox							
	Zika virus infection							
	Severe Fever with Thrombocytopenia Syndrome						3	27
	Hemorrhagic fever with renal syndrome							
	Western equine encephalitis							
	Tick-borne encephalitis						1	1
	Anthrax							
	Chikungunya fever						1	1
	Scrub typhus(Tsutsugamushi disease)					4	5	76
	Dengue fever		2			18	2	53
	Eastern equine encephalitis							
	Avian influenza (excluding H5N1 and H7N9)							
	Nipah virus infection							
	Japanese spotted fever						2	52
	Japanese encephalitis							
	Hantavirus pulmonary syndrome							
	Herpes B virus infection							
	Glanders							
	Brucellosis							1
	Venezuelan equine encephalitis							
	Hendra virus infection							
	Epidemic typhus							
Botulism					1		2	
Malaria			1		3	1	18	
Tularemia								
Lyme disease								
Lyssavirus infection(excluding rabies)								
Rift valley fever								
Melioidosis					1		1	
Legionellosis	3	4	3	1	35	33	524	
Leptospirosis				1	1		1	
Rocky mountain spotted fever								

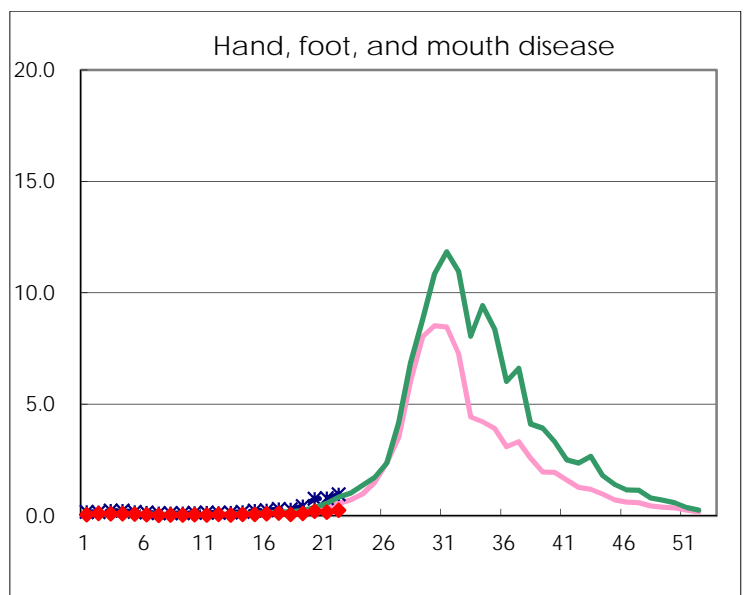
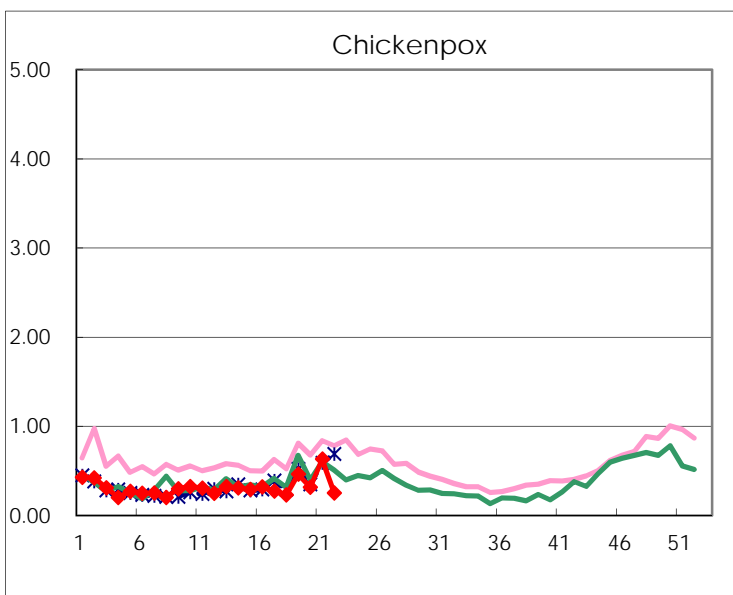
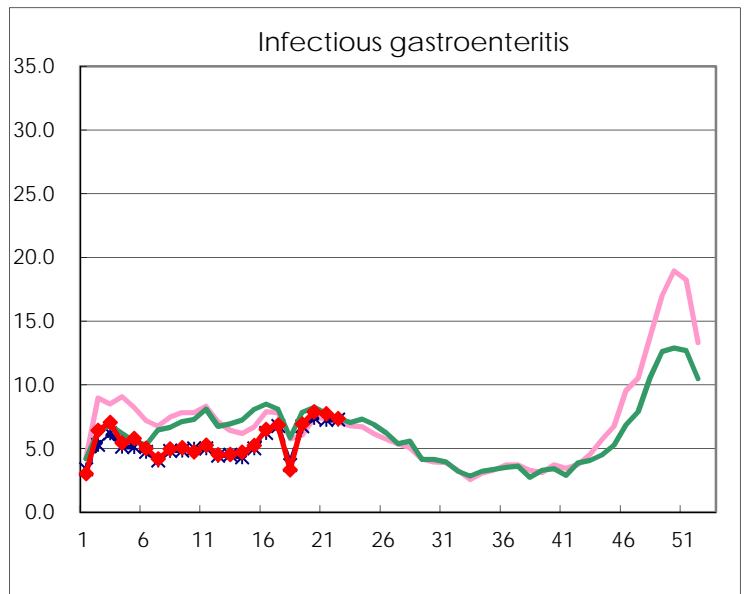
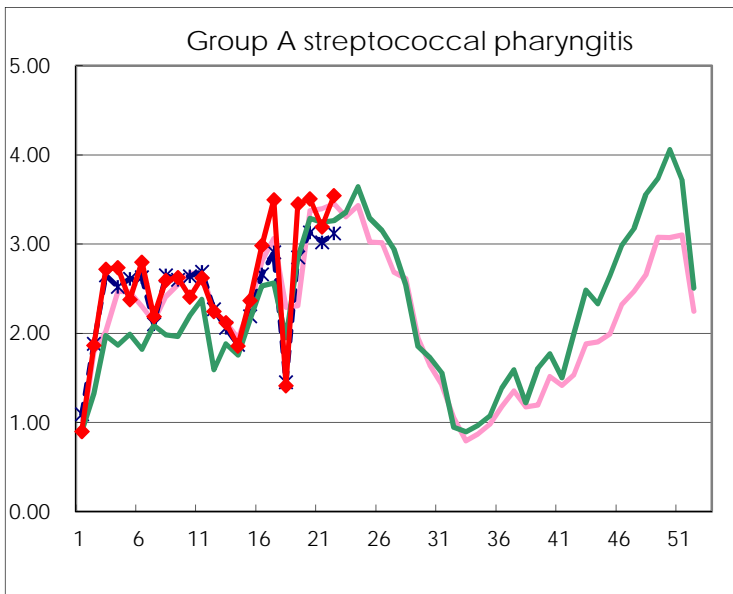
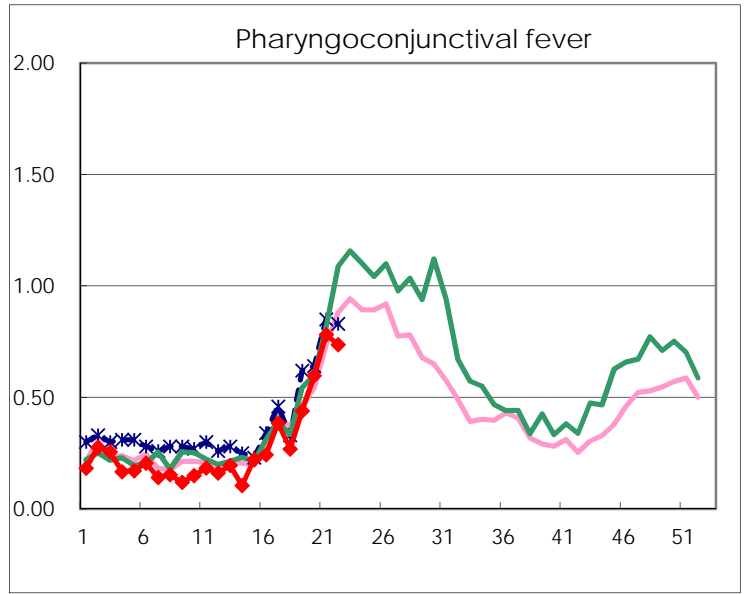
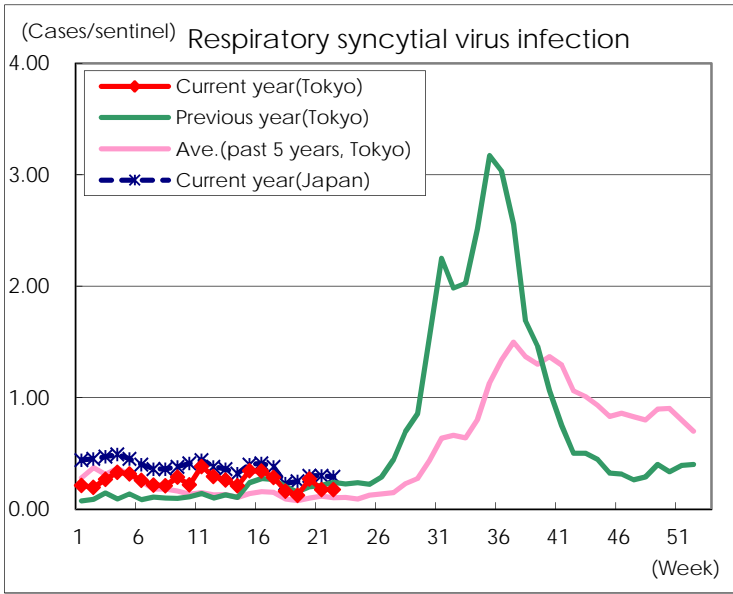
Category	Diseases	Tokyo					Japan	
		19th	20th	21st	22nd	Cum 2018	22nd	Cum 2018
V	Amebiasis	4	1	1	2	64	9	336
	Viral hepatitis(excluding hepatitis A and E)	1	1	3	1	17	1	80
	CRE infection	5	4	6	5	73	29	678
	Acute Flaccid Paralysis (excluding Acute poliomyelitis)			1		2		7
	Acute encephalitis(excluding JE and WNE)		1	2		34	5	334
	Cryptosporidiosis				1	2	1	8
	Creutzfeldt-Jakob disease		1	1		7	5	89
	Severe invasive streptococcal infections(TSLs)	4	1	1	1	49	6	342
	Acquired immunodeficiency syndrome (AIDS)	9	8	8	8	159	22	511
	Giardiasis			1		10		32
	Invasive <i>Haemophilus influenzae</i> disease	1	3		2	15	11	211
	Invasive meningococcal disease		1			5		17
	Invasive pneumococcal disease	9	17	7	5	207	33	1,786
	Varicella (limited to hospitalized case)	1	1	1	1	20	9	170
	Congenital rubella syndrome							
	Syphilis	37	36	36	29	686	86	2,601
	Disseminated cryptococcosis			1		10	2	73
	Tetanus					1	1	38
	Vancomycin-resistant <i>S. aureus</i> infection							
	Vancomycin-resistant <i>Enterococcus</i> infection					1	1	21
	Pertussis	7	14	9	11	169	132	1,929
	Rubella		2	2		5	2	34
Measles	1			1	12	3	167	
MDRA infection					2		8	

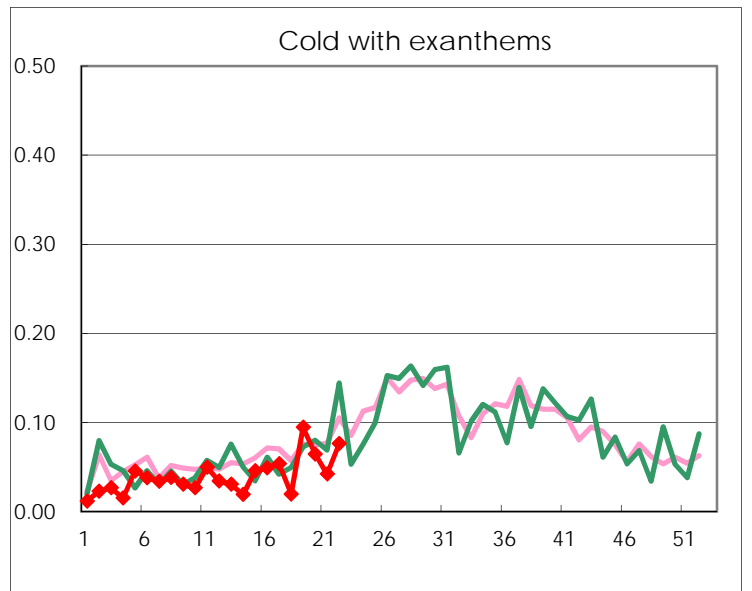
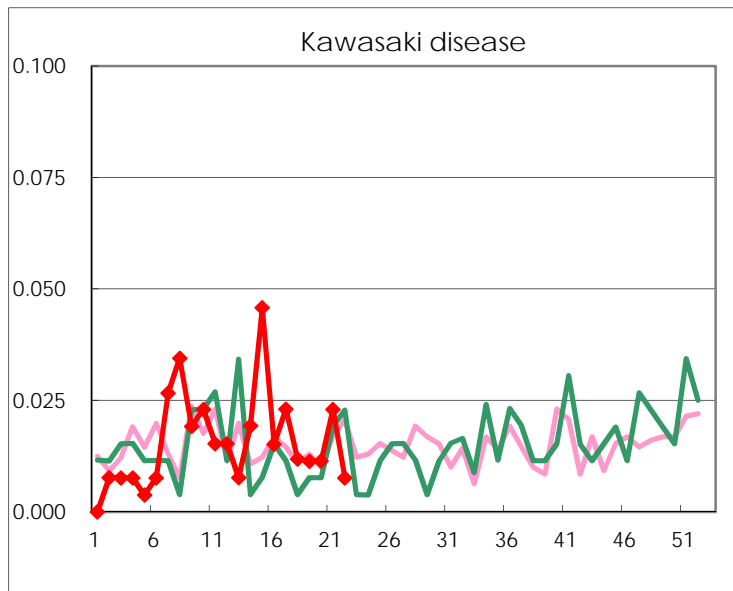
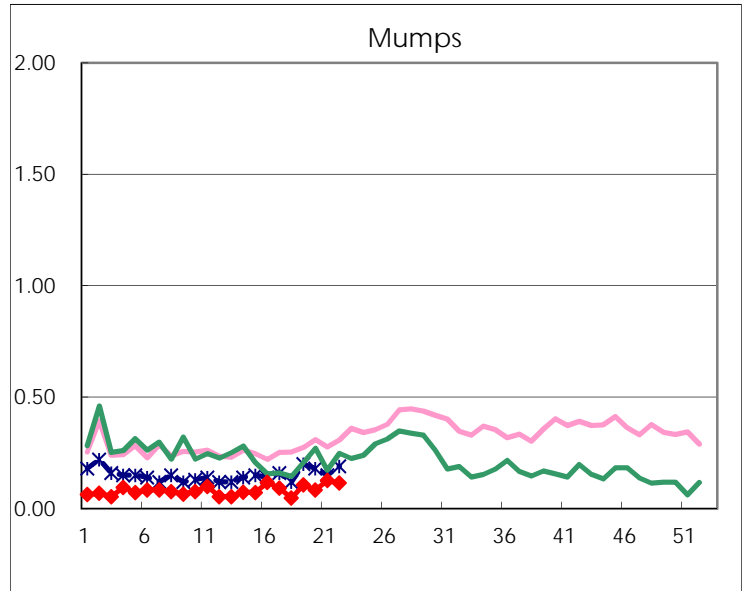
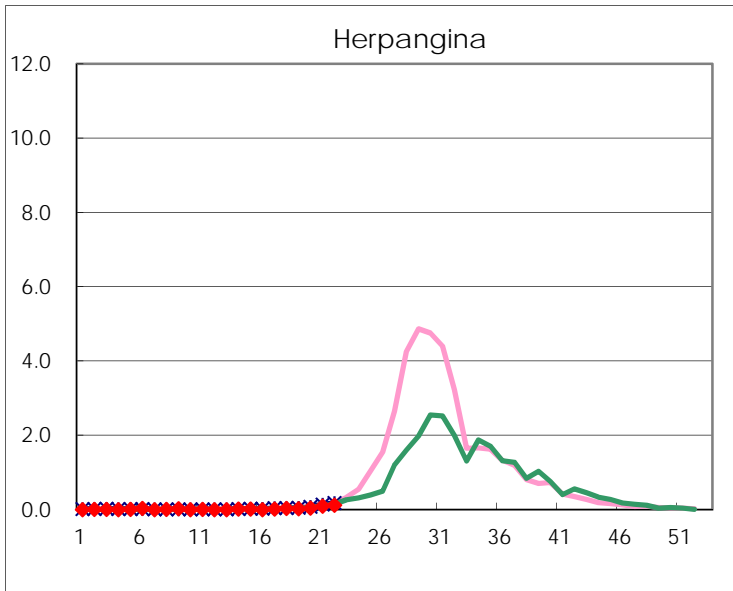
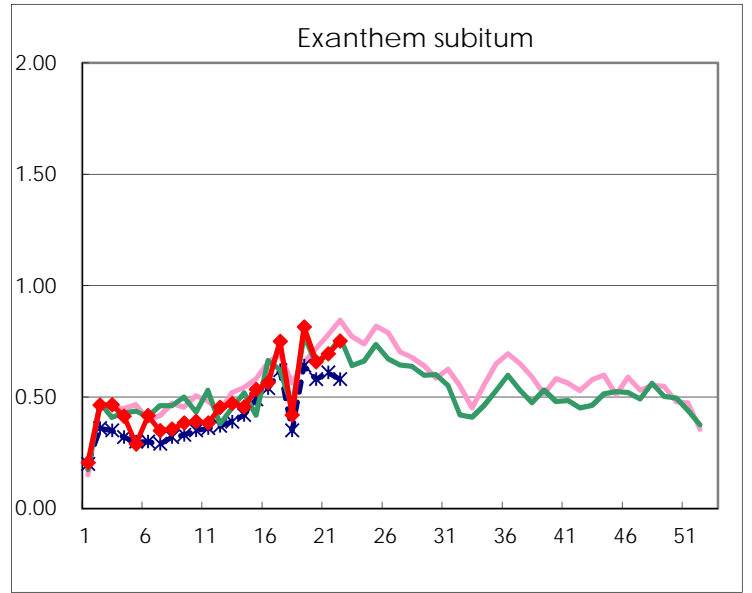
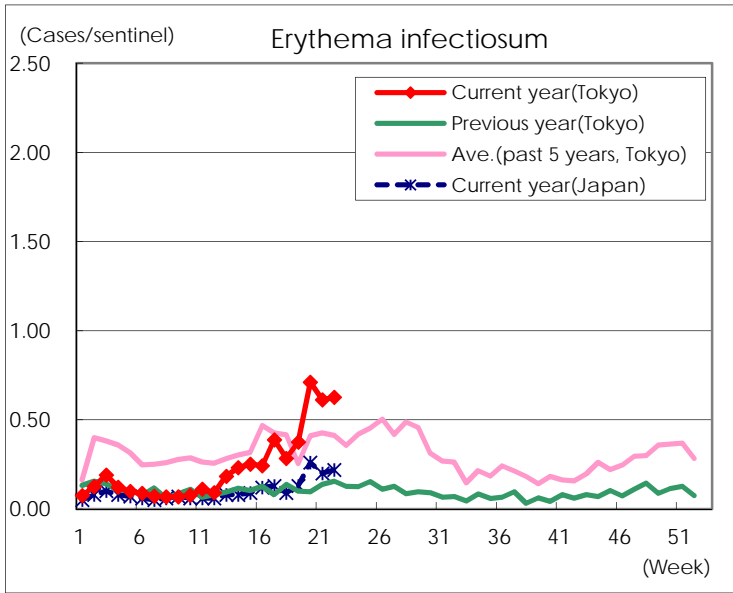
Number of patients with the diseases to be reported  
by the designated clinics and hospitals

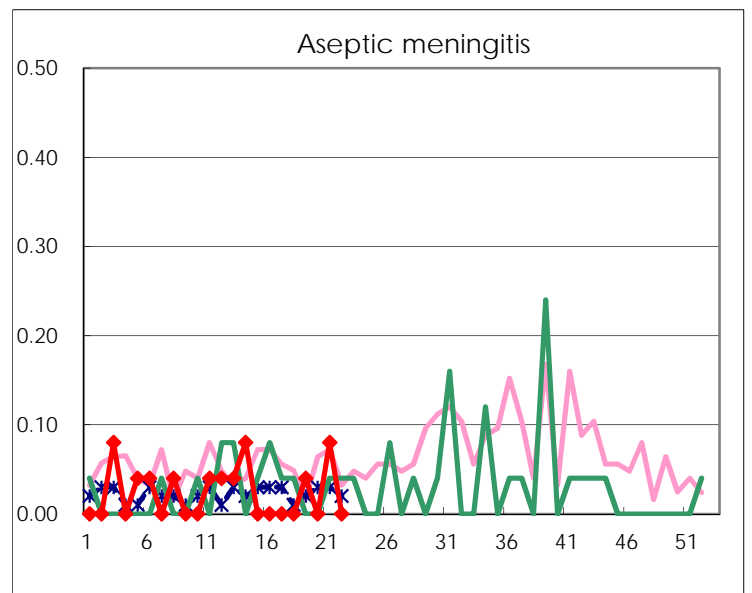
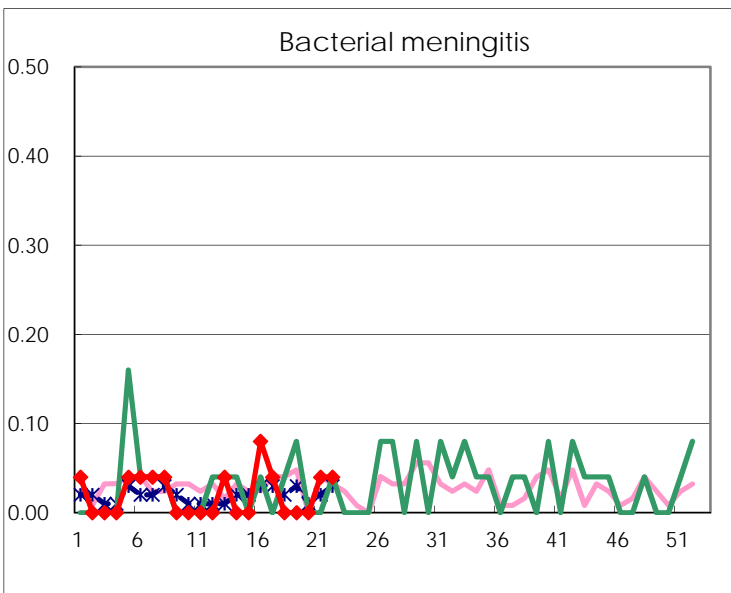
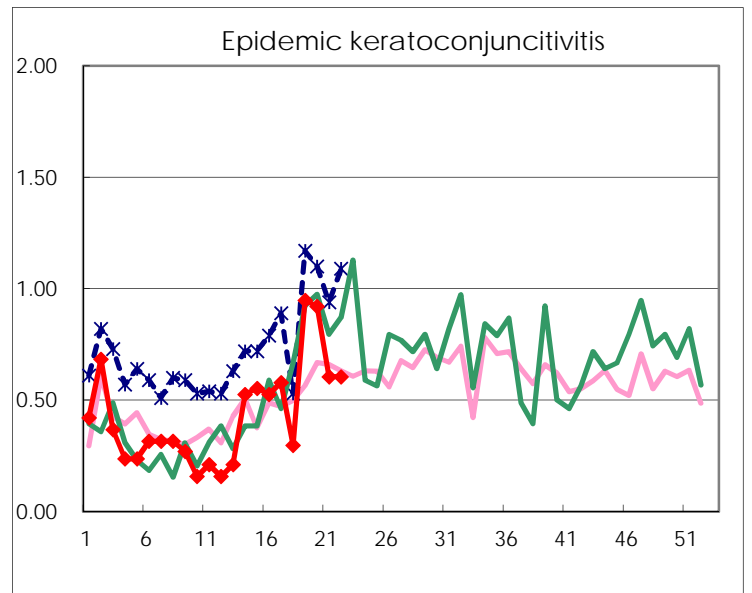
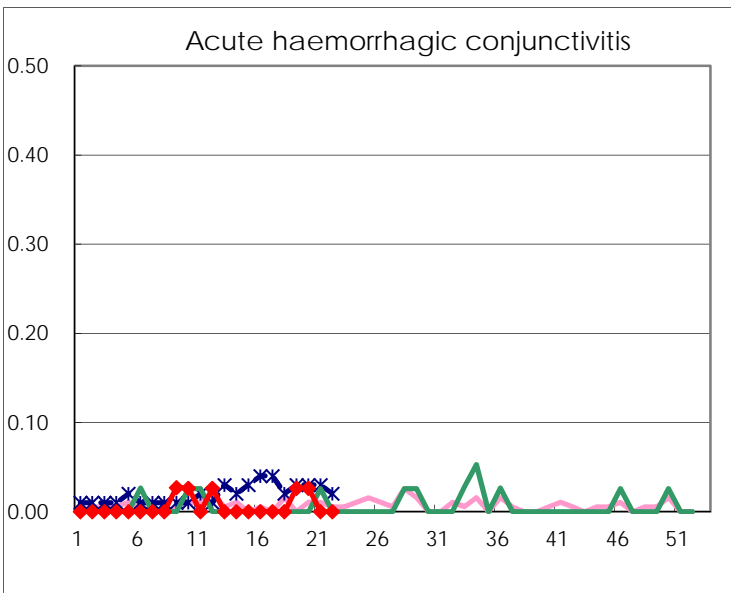
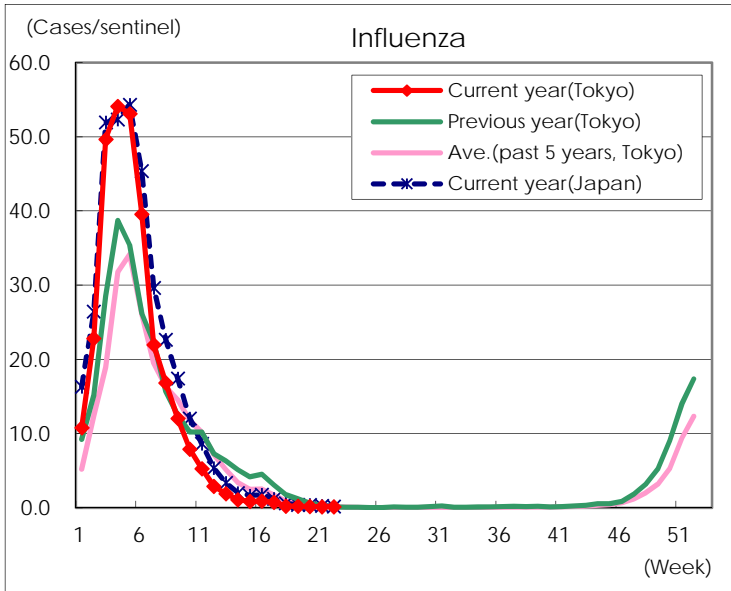
Diseases	Tokyo				
	19th	20th	21st	22nd	/sentinel
Respiratory syncytial virus infection	33	71	46	46	0.18
Pharyngoconjunctival fever	116	157	204	193	0.74
Group A streptococcal pharyngitis	911	923	833	929	3.55
Infectious gastroenteritis	1,822	2,067	2,017	1,925	7.35
Chickenpox	122	83	165	66	0.25
Hand, foot, and mouth disease	28	52	42	65	0.25
Erythema infectiosum	99	187	160	164	0.63
Exanthem subitum	215	173	181	197	0.75
Herpangina	6	11	26	32	0.12
Mumps	28	22	33	30	0.11
Kawasaki disease	3	3	6	2	0.01
Cold with exanthems	25	17	11	20	0.08
Influenza	93	74	66	63	0.15
Acute hemorrhagic conjunctivitis	1	1			
Epidemic keratoconjunctivitis	36	35	23	23	0.61
Bacterial meningitis			1	1	0.04
Aseptic meningitis	1		2		
<i>Mycoplasma pneumoniae</i>	2	3	1	3	0.12
Chlamydial pneumonia (excluding psittacosis)	2	1		1	0.04
Infectious gastroenteritis (only by Rotavirus)	8	2	3	4	0.16
Influenza-Associated Hospitalizations	2	2		1	0.04

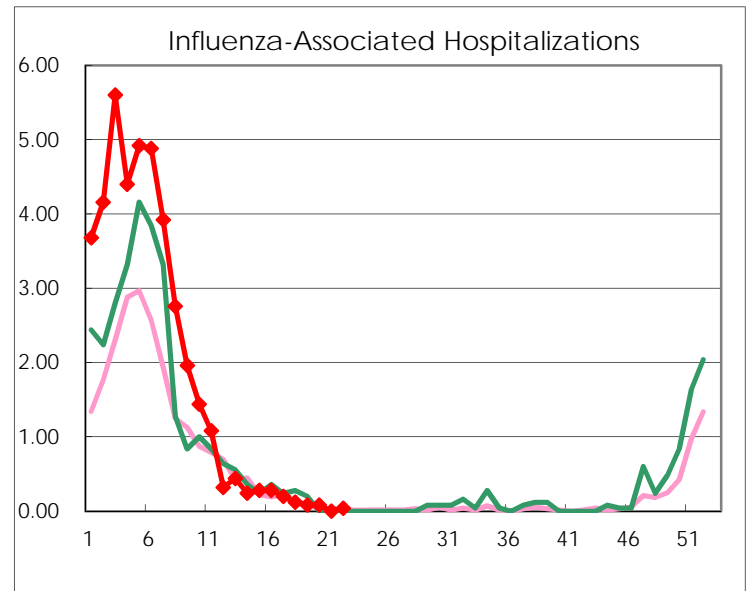
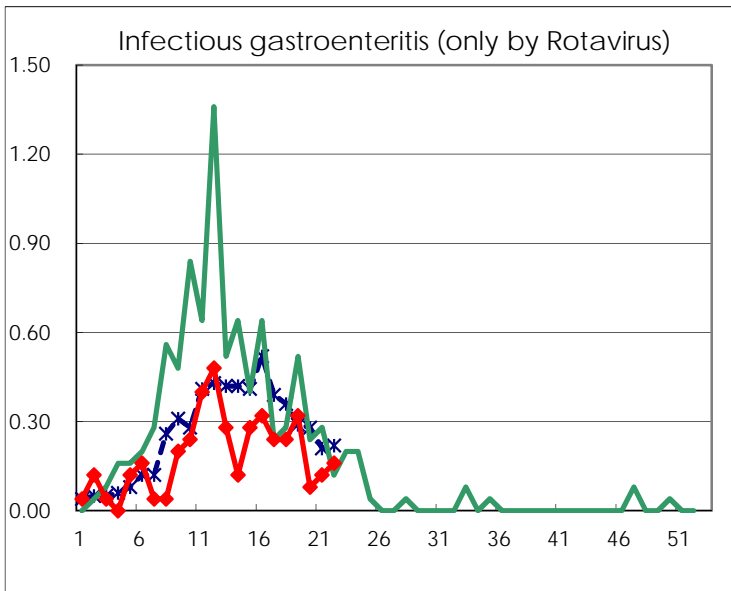
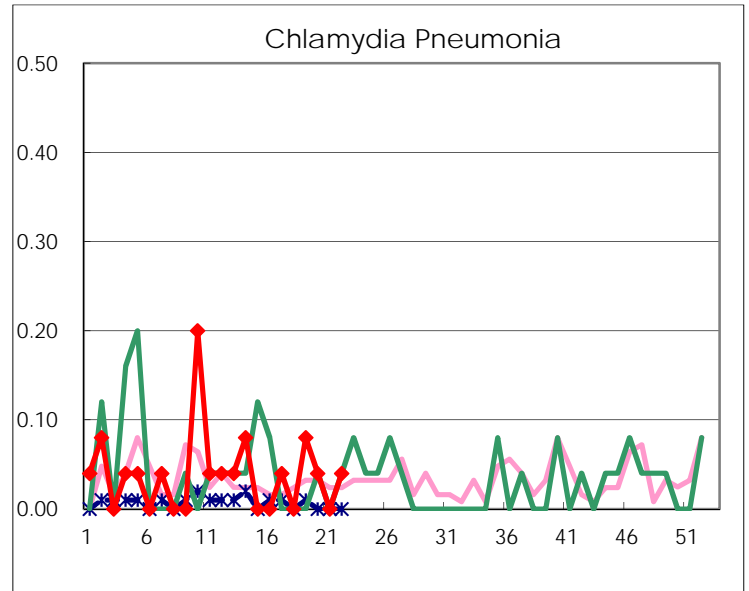
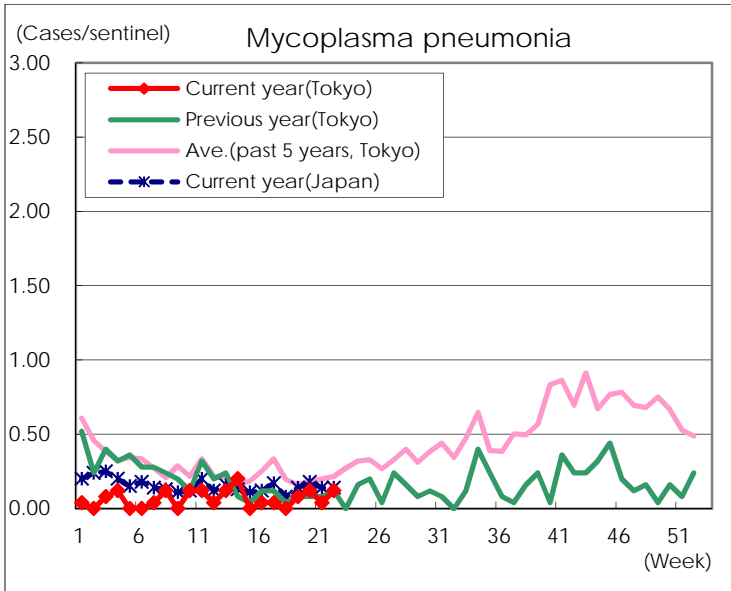
( Blank means 0. )

# Disease Trend Graph (weekly reported cases per sentinel in comparison)









Number of sentinel facilities for weekly reporting		
Types of sentinels	Number of sentinels	Sentinels having reported
Pediatric	264	262
Influenza	419	416
Ophthalmic	39	38
Specially-designated	25	25