

14 June 2018 / Number 23

Surveillance System in Tokyo, Japan

The infectious diseases which all physicians must report

All physicians must report to health centers the incidence of the diseases which are shown at page one. Health centers electronically report the individual cases to Tokyo Metropolitan Infectious Disease Surveillance Center.

The infectious diseases required to be reported by the sentinels

The numbers of patients who visit the sentinel clinics or hospitals during a week are reported to health centers in Tokyo. And they electronically report the numbers to Tokyo Metropolitan Infectious Disease Surveillance Center. We have about 500 sentinel clinics and hospitals in Tokyo.

Tokyo Metropolitan Institute of Public Health

TEL:81-3-3363-3213 FAX:81-3-5332-7365

e-mail:www@tokyo-eiken.go.jp

URL:idsc.tokyo-eiken.go.jp/

Number of patients with the diseases which all physicians must report

Category	Diseases	Tokyo					Japan	
		20th	21st	22nd	23rd	Cum 2018	23rd	Cum 2018
I	Ebola hemorrhagic fever							
	Crimean-Congo hemorrhagic fever							
	Smallpox							
	South American hemorrhagic fever							
	Plague							
	Marburg disease							
	Lassa fever							
II	Acute poliomyelitis							
	Tuberculosis	63	64	87	54	1,464	334	9,064
	Diphtheria							
	Severe Acute Respiratory Syndrome(SARS)							
	Middle East Respiratory Syndrome (MERS)							
	Avian influenza H5N1							
	Avian influenza H7N9							
III	Cholera							2
	Shigellosis		1	1	2	20	9	87
	Enterohemorrhagic Escherichia coli infection	5	8	8	14	74	101	664
	Typhoid fever	1				5		18
	Paratyphoid fever			1		6		10
IV	Hepatitis E	1	1	2	2	36	4	172
	West Nile fever							
	Hepatitis A	21	18	10	16	198	22	388
	Echinococcosis						1	5
	Yellow fever							
	Psittacosis							3
	Omsk hemorrhagic fever							
	Relapsing fever							
	Kyasanur forest disease							
	Q fever							1
	Rabies							
	Coccidioidomycosis							
	Monkeypox							
	Zika virus infection							
	Severe Fever with Thrombocytopenia Syndrome						2	31
	Hemorrhagic fever with renal syndrome							
	Western equine encephalitis							
	Tick-borne encephalitis							1
	Anthrax							
	Chikungunya fever							1
	Scrub typhus(Tsutsugamushi disease)					4	3	79
	Dengue fever	2				18	2	56
	Eastern equine encephalitis							
	Avian influenza (excluding H5N1 and H7N9)							
	Nipah virus infection							
	Japanese spotted fever						5	60
	Japanese encephalitis							
	Hantavirus pulmonary syndrome							
	Herpes B virus infection							
	Glanders							
	Brucellosis							1
	Venezuelan equine encephalitis							
	Hendra virus infection							
	Epidemic typhus							
Botulism					1		2	
Malaria		1			3		18	
Tularemia								
Lyme disease								
Lyssavirus infection(excluding rabies)								
Rift valley fever								
Melioidosis					1		1	
Legionellosis	4	3	1		35	45	576	
Leptospirosis			1		1		1	
Rocky mountain spotted fever								

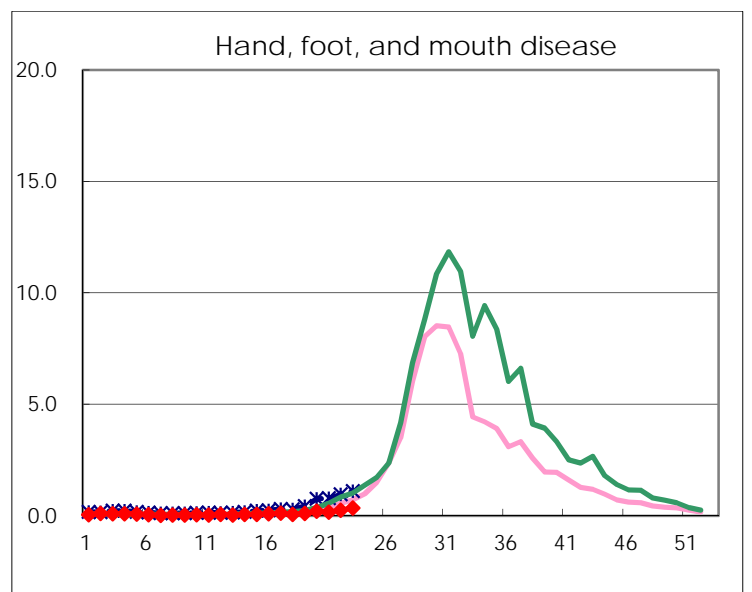
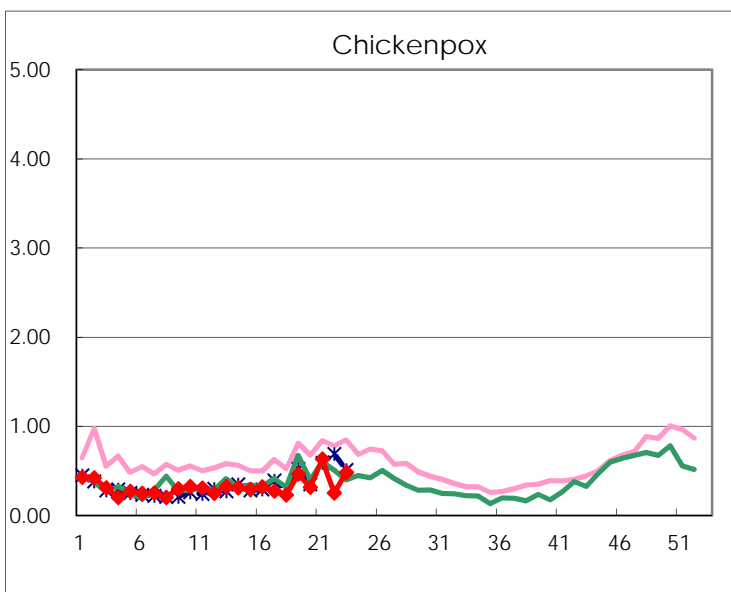
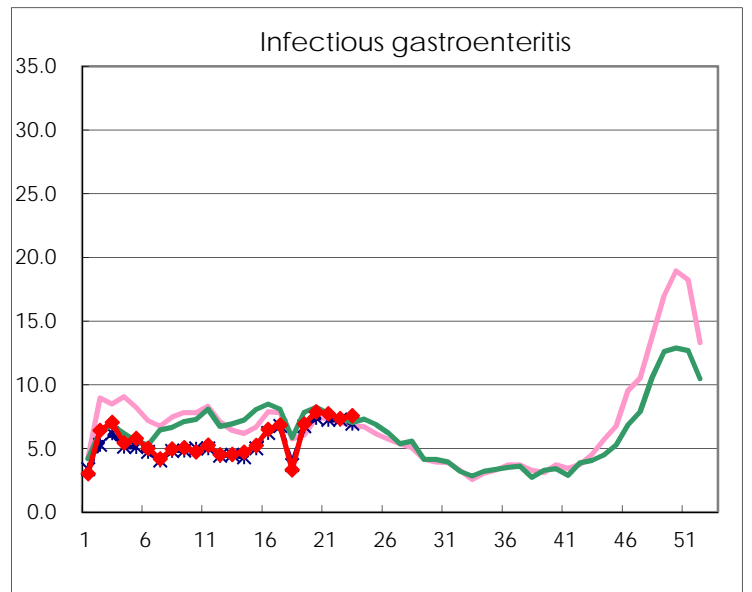
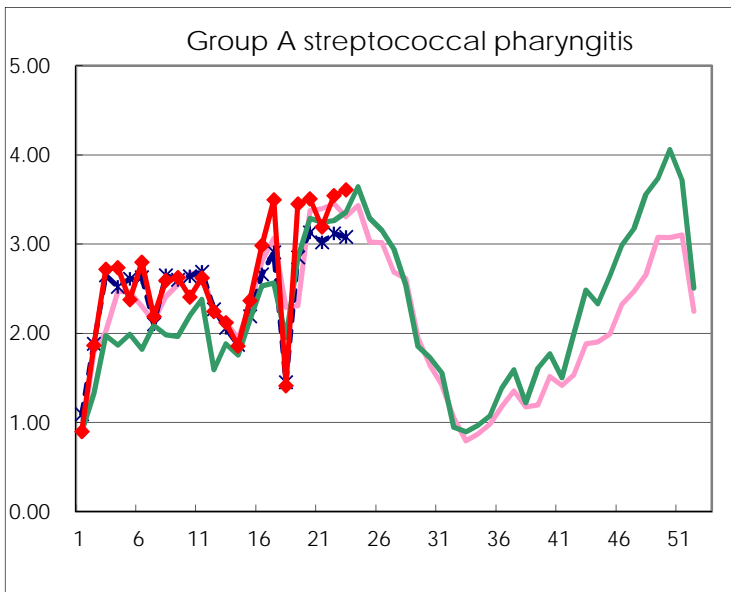
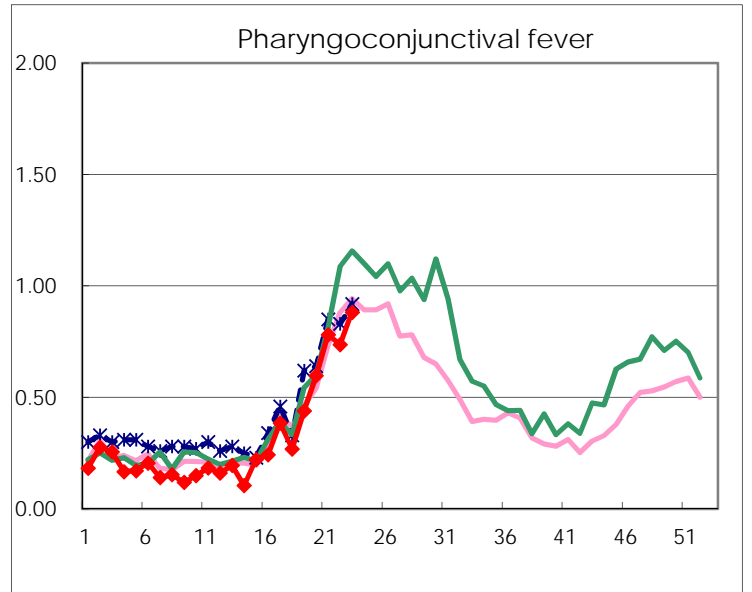
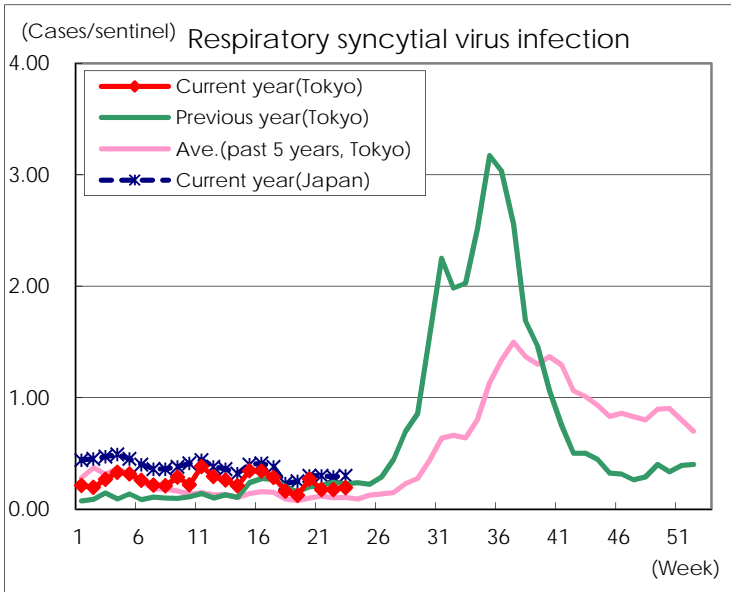
Category	Diseases	Tokyo					Japan	
		20th	21st	22nd	23rd	Cum 2018	23rd	Cum 2018
V	Amebiasis	1	1	2	1	65	12	355
	Viral hepatitis(excluding hepatitis A and E)	1	3	1	2	19	4	87
	CRE infection	4	6	6	8	82	28	716
	Acute Flaccid Paralysis (excluding Acute poliomyelitis)		1			2	1	8
	Acute encephalitis(excluding JE and WNE)	1	2			34	7	344
	Cryptosporidiosis			1		2		8
	Creutzfeldt-Jakob disease	1	1		1	8	3	92
	Severe invasive streptococcal infections(TSLs)	1	1	2		50	8	356
	Acquired immunodeficiency syndrome (AIDS)	8	8	8	12	171	15	536
	Giardiasis		1			10	2	34
	Invasive <i>Haemophilus influenzae</i> disease	3		2		15	5	220
	Invasive meningococcal disease	1				5	1	18
	Invasive pneumococcal disease	17	7	10	8	220	44	1,852
	Varicella (limited to hospitalized case)	1	1	1	3	23	6	179
	Congenital rubella syndrome							
	Syphilis	36	36	31	42	730	95	2,752
	Disseminated cryptococcosis		1			10	5	79
	Tetanus					1	2	41
	Vancomycin-resistant <i>S. aureus</i> infection							
	Vancomycin-resistant <i>Enterococcus</i> infection					1	1	23
	Pertussis	14	10	13	19	191	139	2,104
Rubella	2	2			5	1	35	
Measles			1		12	3	173	
MDRA infection					2		8	

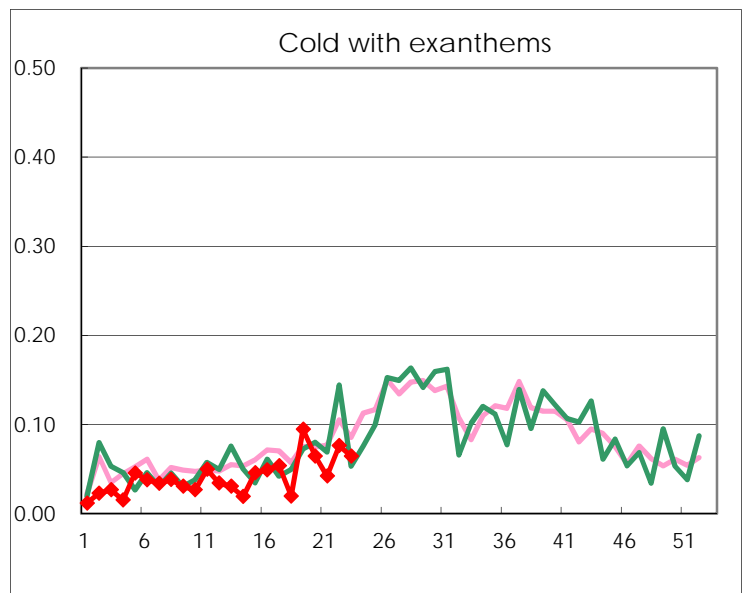
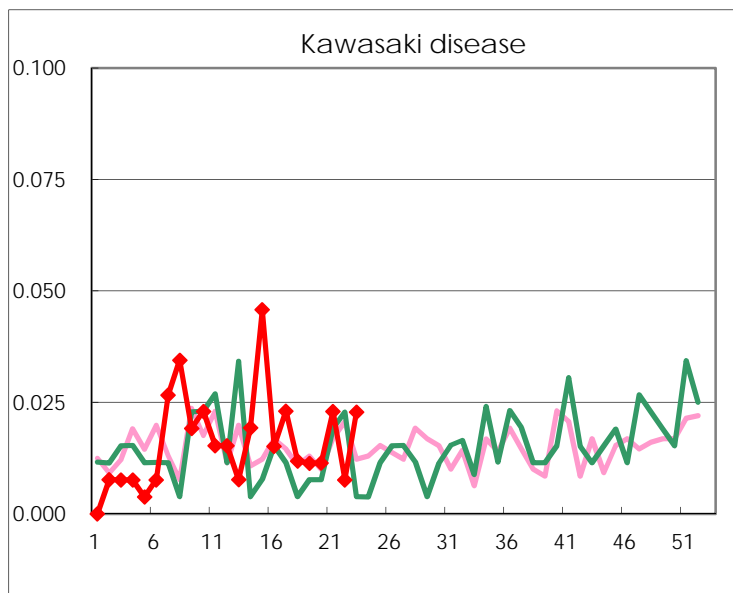
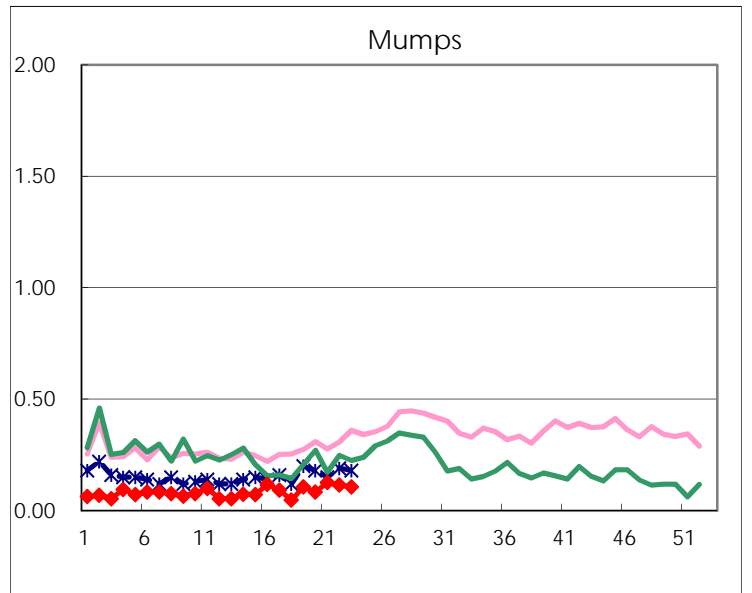
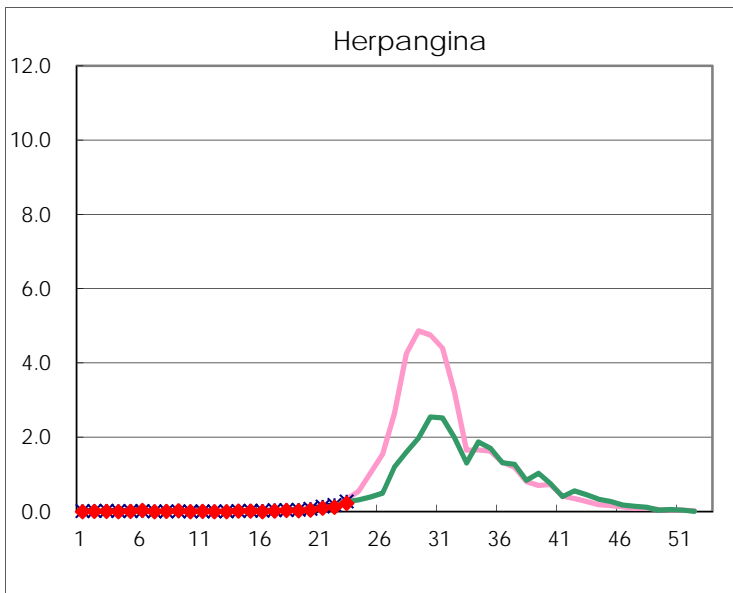
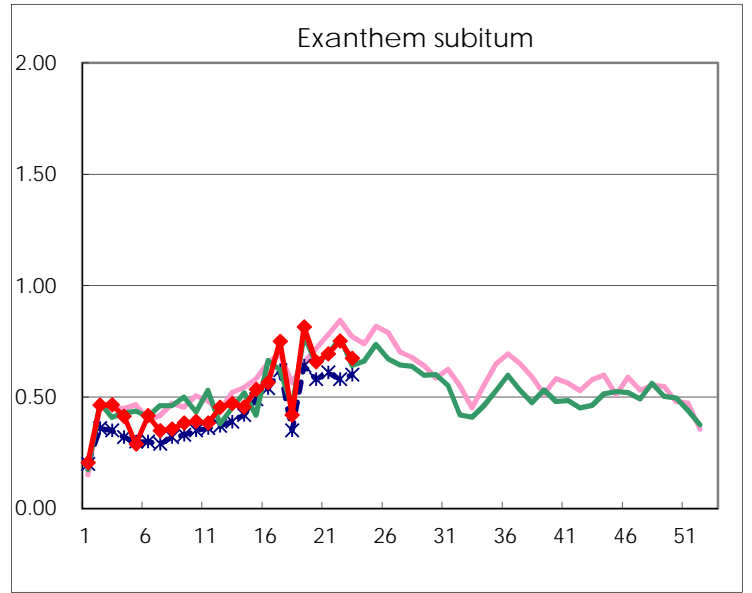
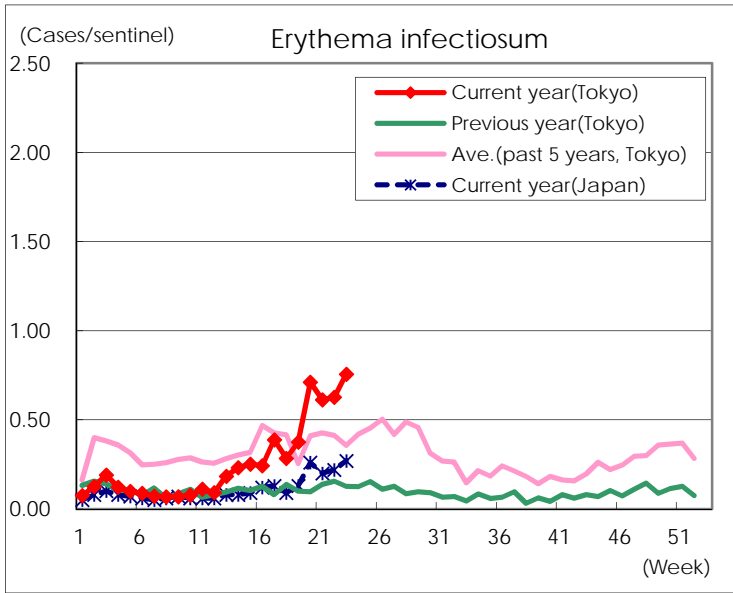
Number of patients with the diseases to be reported
by the designated clinics and hospitals

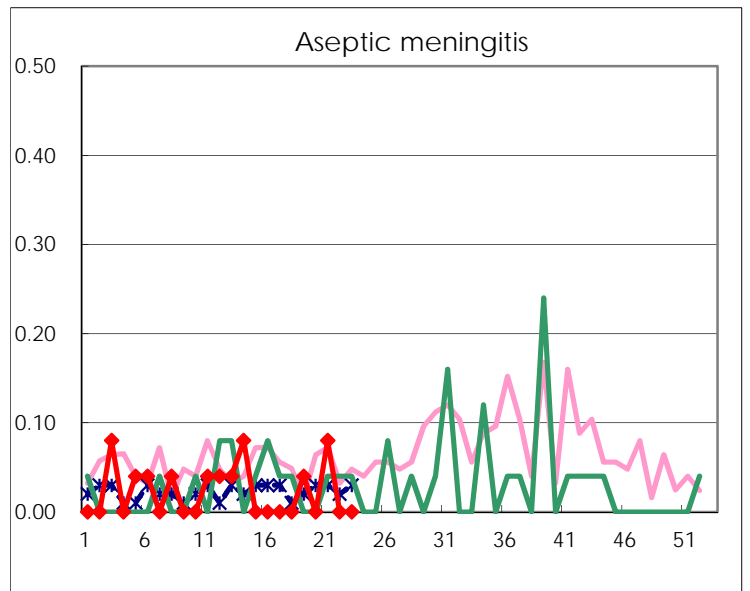
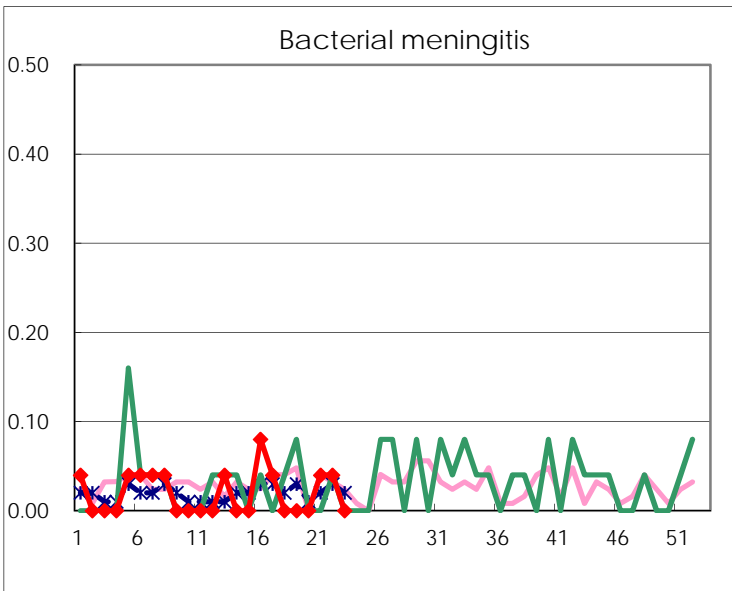
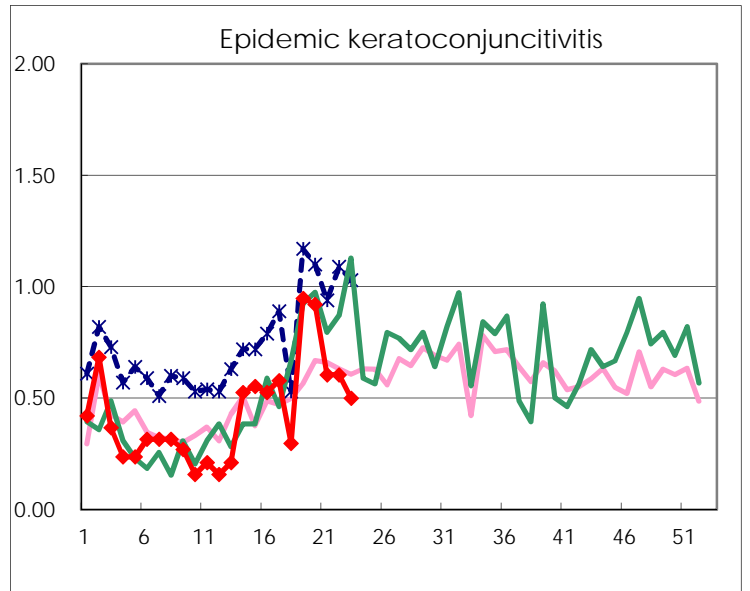
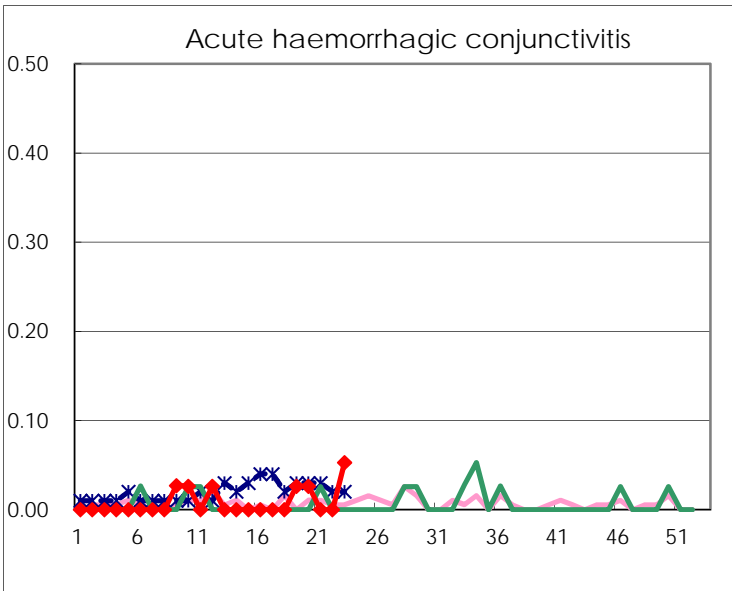
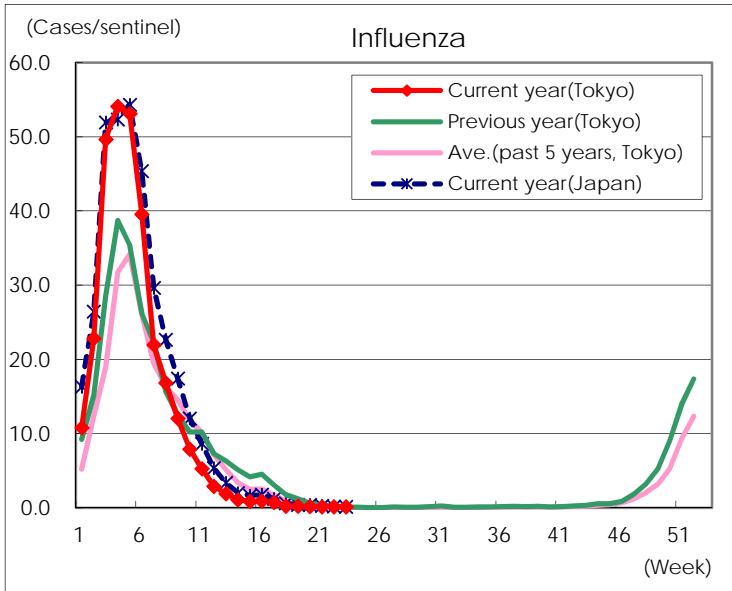
Diseases	Tokyo				
	20th	21st	22nd	23rd	/sentinel
Respiratory syncytial virus infection	71	46	46	51	0.19
Pharyngoconjunctival fever	157	204	193	232	0.88
Group A streptococcal pharyngitis	923	833	929	949	3.61
Infectious gastroenteritis	2,067	2,017	1,925	1,988	7.56
Chickenpox	83	165	66	127	0.48
Hand, foot, and mouth disease	52	42	65	90	0.34
Erythema infectiosum	187	160	164	199	0.76
Exanthem subitum	173	181	197	177	0.67
Herpangina	11	26	32	60	0.23
Mumps	22	33	30	28	0.11
Kawasaki disease	3	6	2	6	0.02
Cold with exanthems	17	11	20	17	0.06
Influenza	74	66	63	50	0.12
Acute hemorrhagic conjunctivitis	1			2	0.05
Epidemic keratoconjunctivitis	35	23	23	19	0.50
Bacterial meningitis		1	1		
Aseptic meningitis		2			
<i>Mycoplasma pneumoniae</i>	3	1	3	2	0.08
Chlamydial pneumonia (excluding psittacosis)	1		1		
Infectious gastroenteritis (only by Rotavirus)	2	3	4		
Influenza-Associated Hospitalizations	2		1		

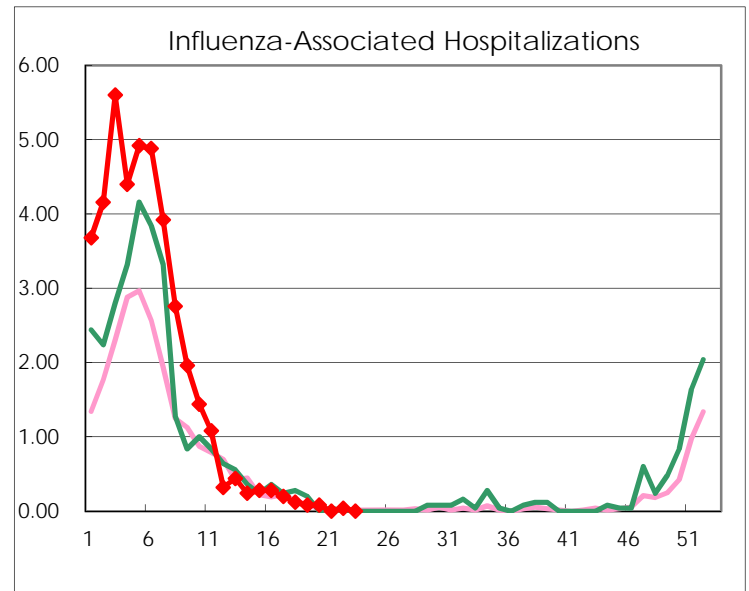
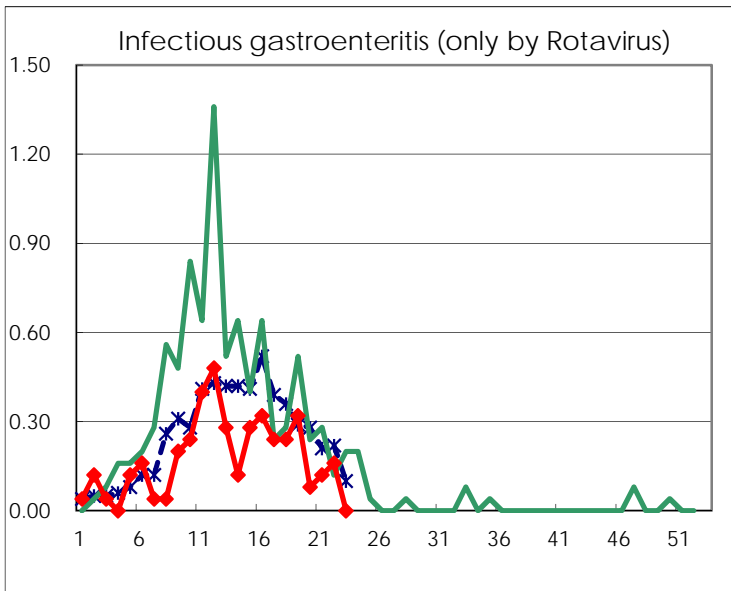
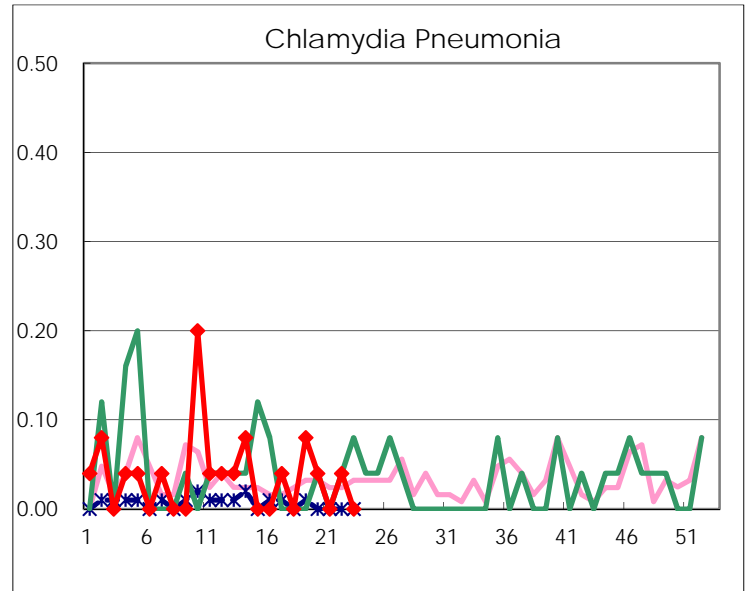
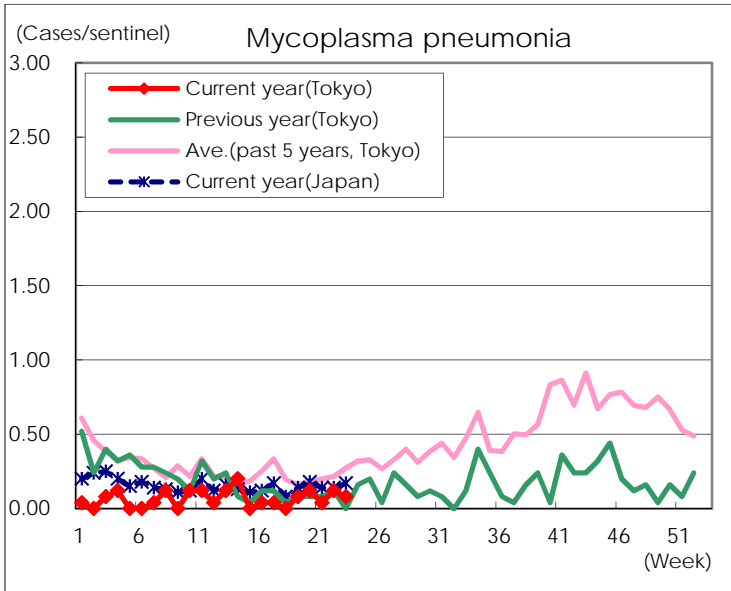
(Blank means 0.)

Disease Trend Graph (weekly reported cases per sentinel in comparison)









Number of sentinel facilities for weekly reporting		
Types of sentinels	Number of sentinels	Sentinels having reported
Pediatric	264	263
Influenza	419	416
Ophthalmic	39	38
Specially-designated	25	25