

21 June 2018 / Number 24

Surveillance System in Tokyo, Japan

The infectious diseases which all physicians must report

All physicians must report to health centers the incidence of the diseases which are shown at page one. Health centers electronically report the individual cases to Tokyo Metropolitan Infectious Disease Surveillance Center.

The infectious diseases required to be reported by the sentinels

The numbers of patients who visit the sentinel clinics or hospitals during a week are reported to health centers in Tokyo. And they electronically report the numbers to Tokyo Metropolitan Infectious Disease Surveillance Center. We have about 500 sentinel clinics and hospitals in Tokyo.

Tokyo Metropolitan Institute of Public Health

TEL:81-3-3363-3213 FAX:81-3-5332-7365

e-mail:www@tokyo-eiken.go.jp

URL:idsc.tokyo-eiken.go.jp/

Number of patients with the diseases which all physicians must report

Category	Diseases	Tokyo					Japan	
		21st	22nd	23rd	24th	Cum 2018	24th	Cum 2018
I	Ebola hemorrhagic fever							
	Crimean-Congo hemorrhagic fever							
	Smallpox							
	South American hemorrhagic fever							
	Plague							
	Marburg disease							
	Lassa fever							
II	Acute poliomyelitis							
	Tuberculosis	68	93	61	55	1,536	315	9,563
	Diphtheria							
	Severe Acute Respiratory Syndrome(SARS)							
	Middle East Respiratory Syndrome (MERS)							
	Avian influenza H5N1							
	Avian influenza H7N9							
III	Cholera							2
	Shigellosis	1	1	2		20		87
	Enterohemorrhagic Escherichia coli infection	8	8	14	12	86	120	792
	Typhoid fever					5		18
	Paratyphoid fever		1			6		10
IV	Hepatitis E	1	2	2	5	41	7	182
	West Nile fever							
	Hepatitis A	18	10	16	14	212	27	416
	Echinococcosis							5
	Yellow fever							
	Psittacosis							3
	Omsk hemorrhagic fever							
	Relapsing fever							
	Kyasanur forest disease							
	Q fever							1
	Rabies							
	Coccidioidomycosis						1	1
	Monkeypox							
	Zika virus infection							
	Severe Fever with Thrombocytopenia Syndrome						4	35
	Hemorrhagic fever with renal syndrome							
	Western equine encephalitis							
	Tick-borne encephalitis							1
	Anthrax							
	Chikungunya fever							1
	Scrub typhus(Tsutsugamushi disease)					4	5	84
	Dengue fever					18	3	59
	Eastern equine encephalitis							
	Avian influenza (excluding H5N1 and H7N9)							
	Nipah virus infection							
	Japanese spotted fever						6	67
	Japanese encephalitis							
	Hantavirus pulmonary syndrome							
	Herpes B virus infection							
	Glanders							
	Brucellosis						1	2
	Venezuelan equine encephalitis							
	Hendra virus infection							
Epidemic typhus								
Botulism					1		2	
Malaria	1			2	5	3	21	
Tularemia								
Lyme disease								
Lyssavirus infection(excluding rabies)								
Rift valley fever								
Melioidosis					1		1	
Legionellosis	3	1		2	37	63	644	
Leptospirosis		1			1		1	
Rocky mountain spotted fever								

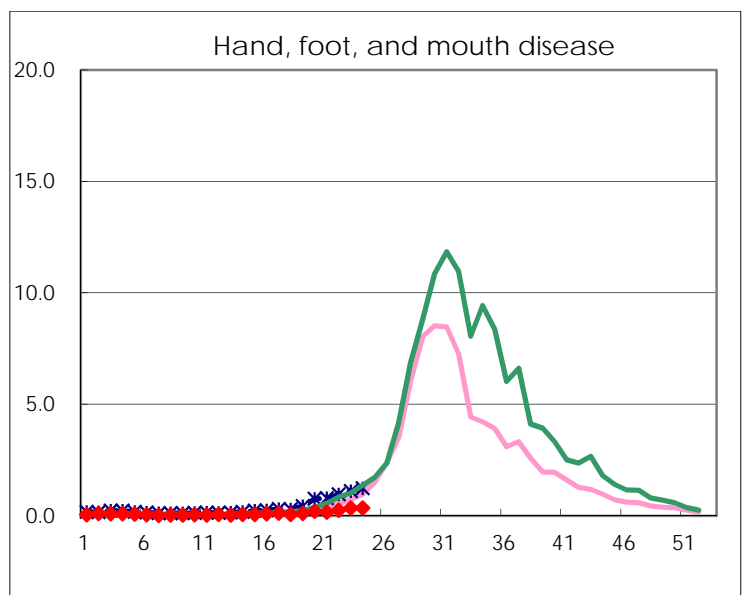
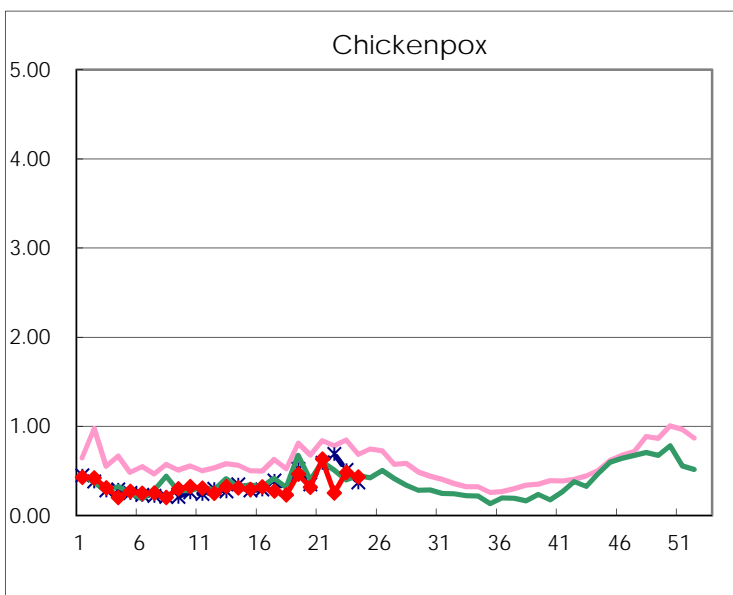
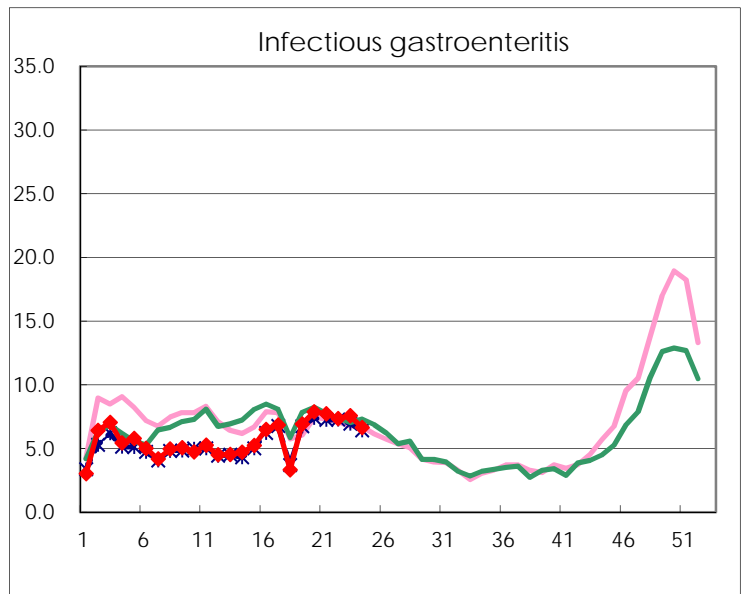
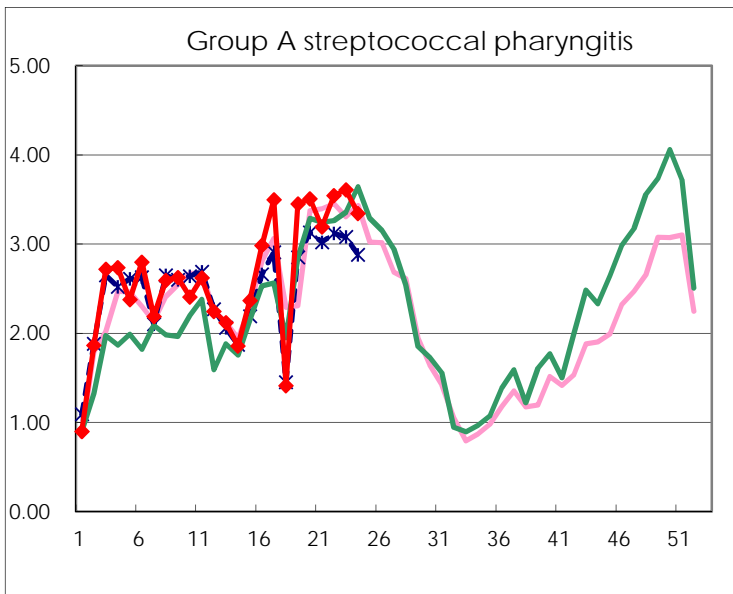
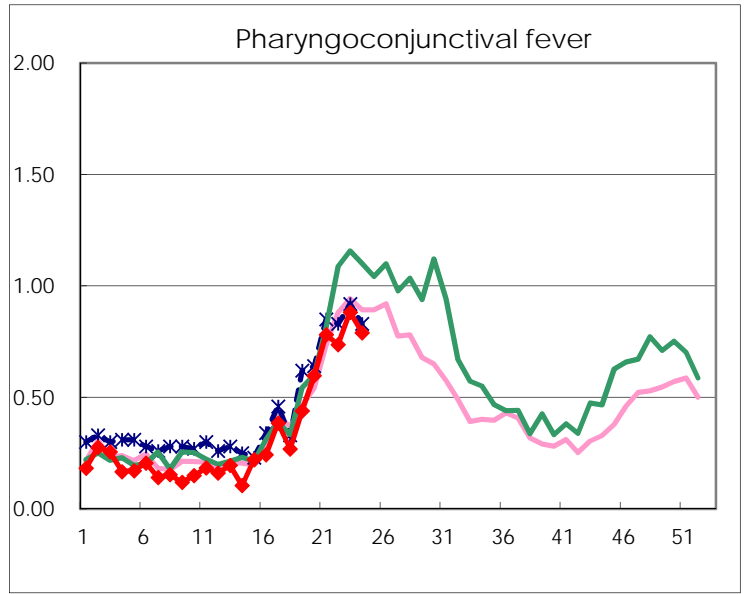
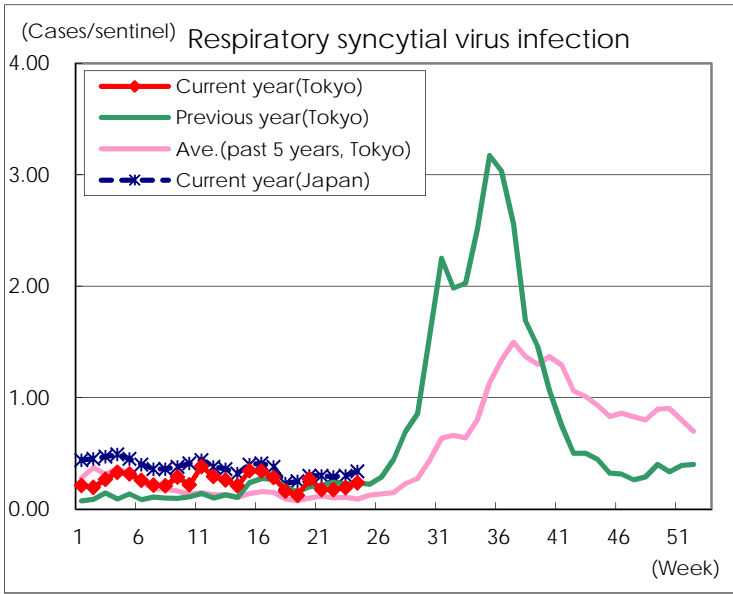
Category	Diseases	Tokyo					Japan	
		21st	22nd	23rd	24th	Cum 2018	24th	Cum 2018
V	Amebiasis	1	2	1	7	72	9	371
	Viral hepatitis(excluding hepatitis A and E)	3	1	2	1	20		91
	CRE infection	6	6	8	1	83	17	745
	Acute Flaccid Paralysis (excluding Acute poliomyelitis)	1				2	1	9
	Acute encephalitis(excluding JE and WNE)	2			1	35	8	352
	Cryptosporidiosis		1			2	2	10
	Creutzfeldt-Jakob disease	1		1		8	2	95
	Severe invasive streptococcal infections(TSLs)	1	2		1	51	7	362
	Acquired immunodeficiency syndrome (AIDS)	8	8	13	7	180	16	566
	Giardiasis	1				10	1	35
	Invasive <i>Haemophilus influenzae</i> disease		2		1	16	7	230
	Invasive meningococcal disease					5		18
	Invasive pneumococcal disease	7	10	8	6	226	41	1,907
	Varicella (limited to hospitalized case)	1	1	3	3	26	10	192
	Congenital rubella syndrome							
	Syphilis	36	31	44	29	762	85	2,903
	Disseminated cryptococcosis	1				10	2	82
	Tetanus					1	1	42
	Vancomycin-resistant <i>S. aureus</i> infection							
	Vancomycin-resistant <i>Enterococcus</i> infection				1	2	2	24
	Pertussis	10	13	19	30	221	143	2,311
Rubella	2			1	6	1	35	
Measles		1		1	13	1	170	
MDRA infection				1	3	1	9	

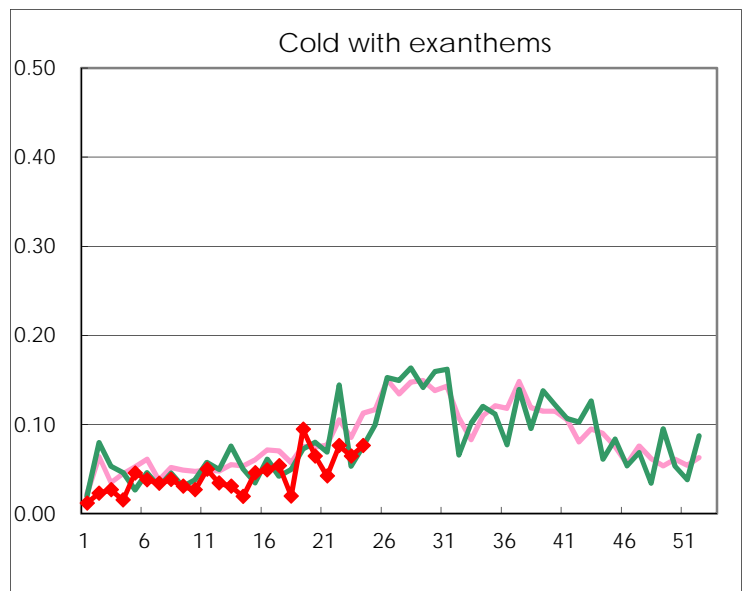
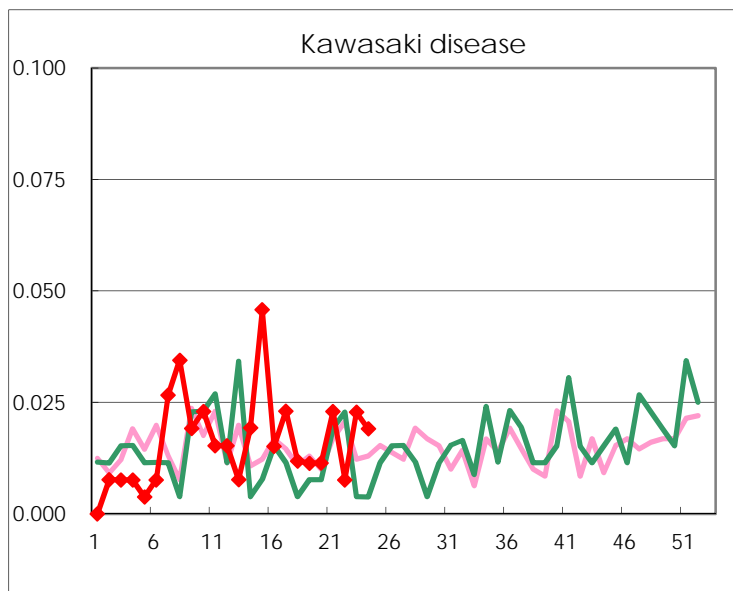
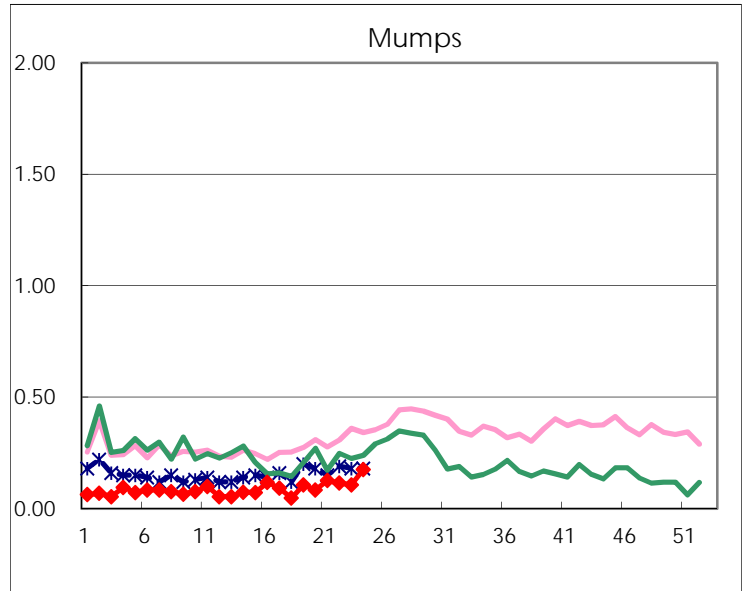
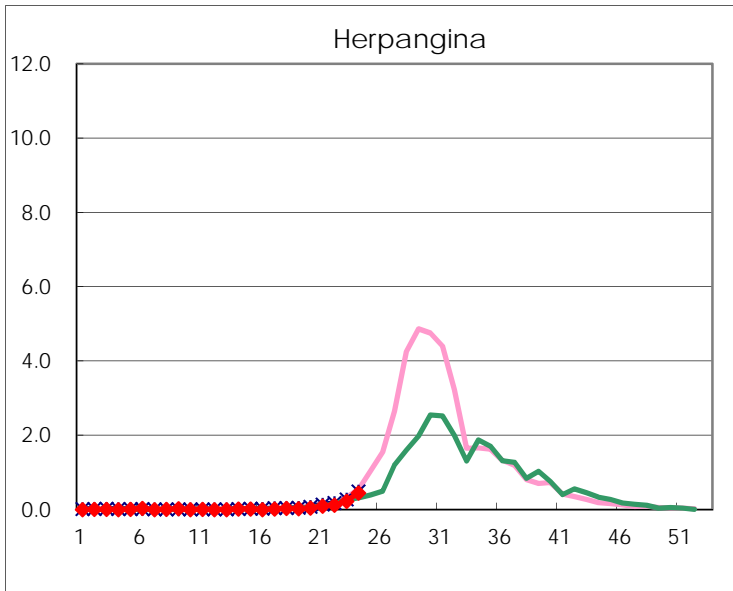
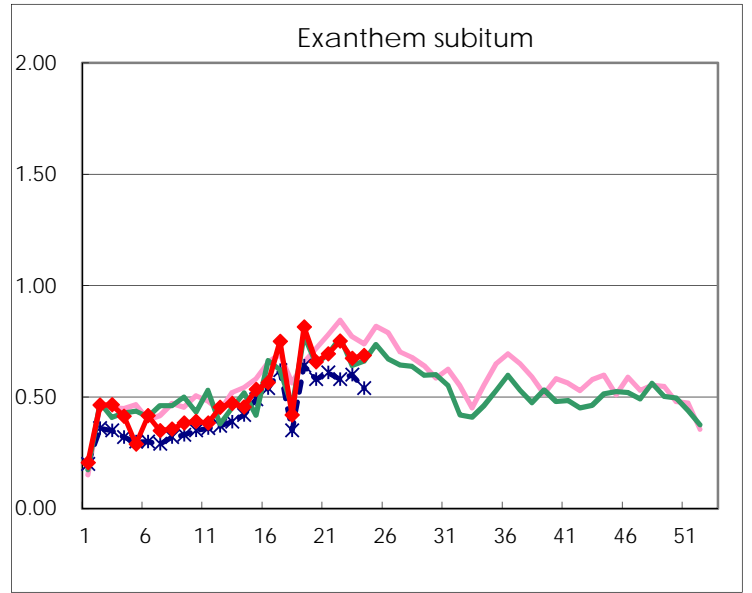
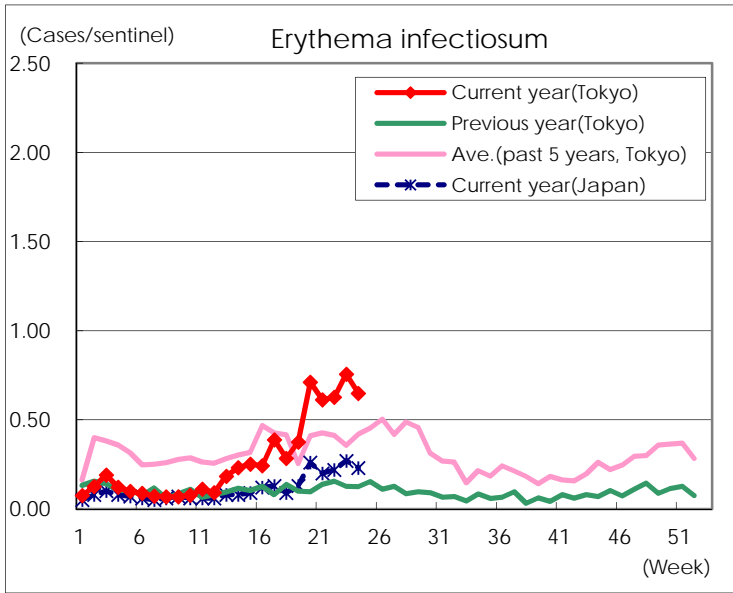
Number of patients with the diseases to be reported
by the designated clinics and hospitals

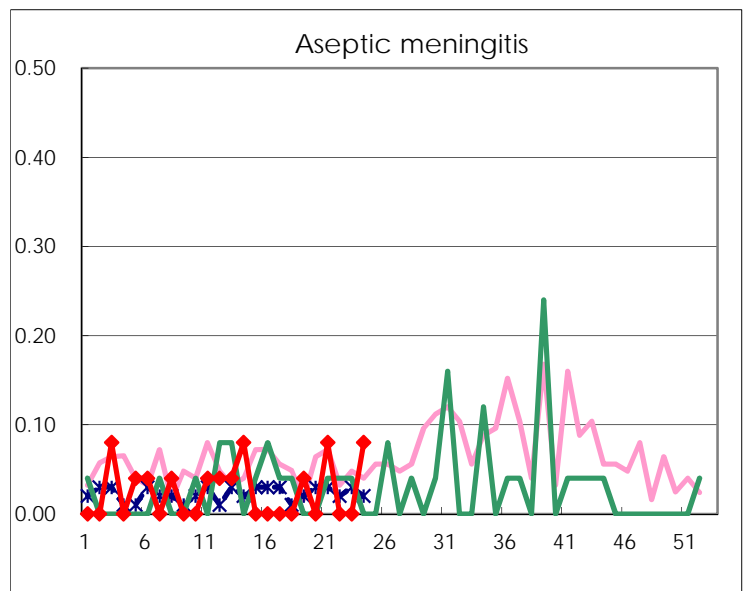
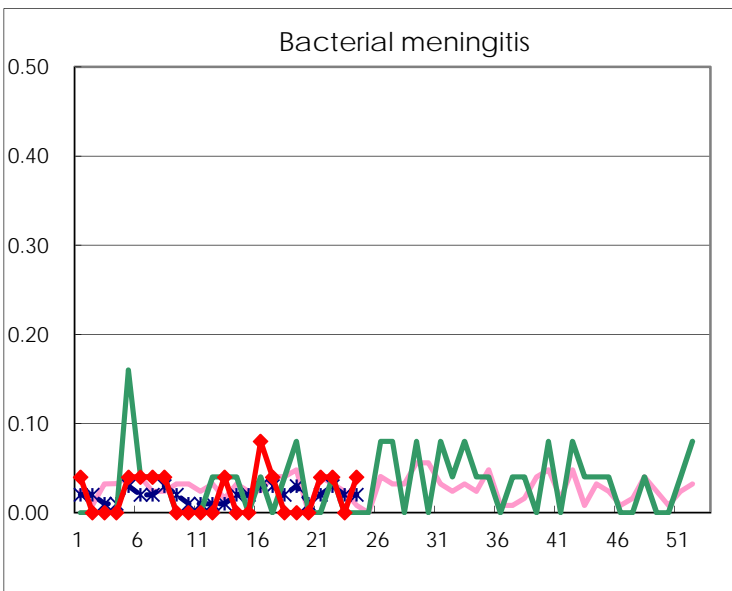
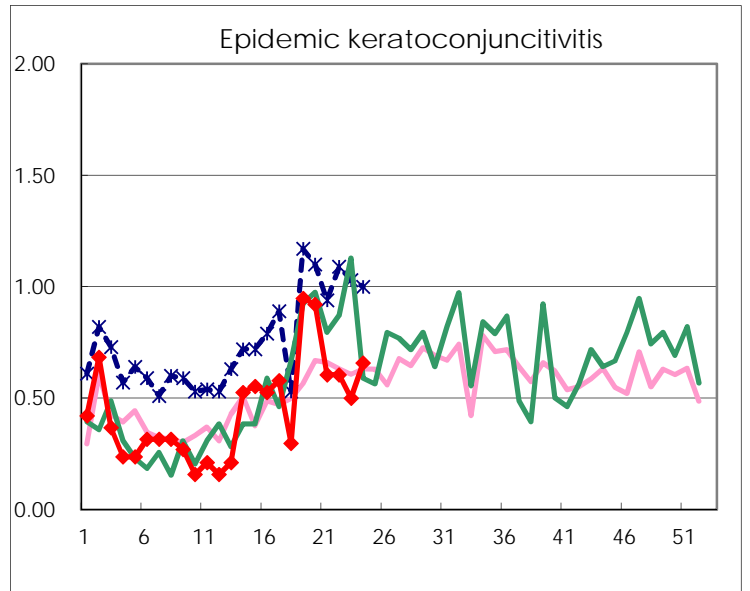
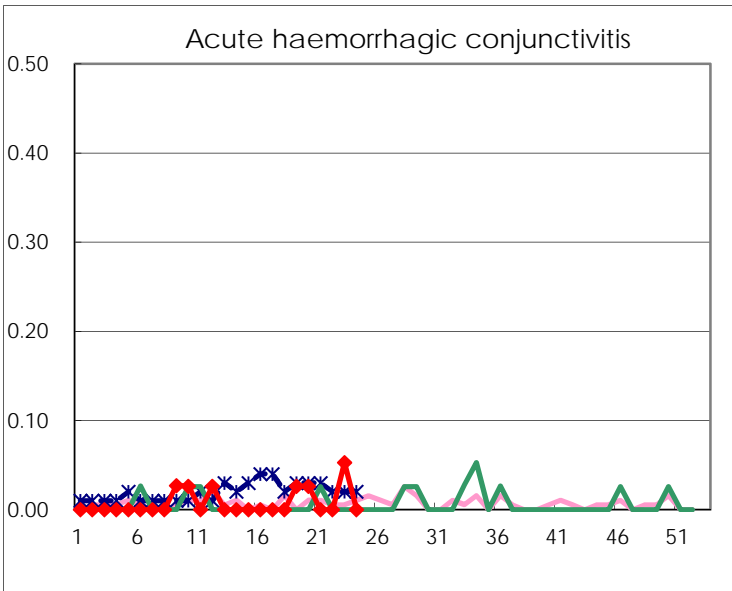
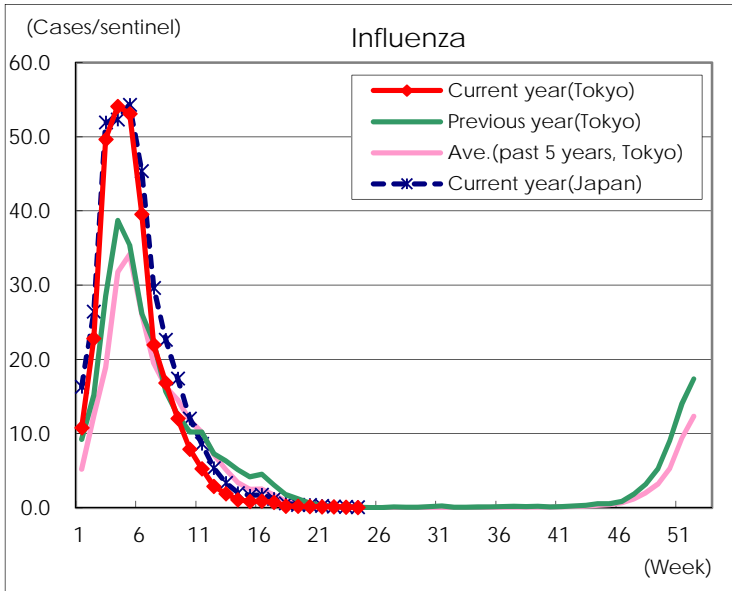
Diseases	Tokyo				
	21st	22nd	23rd	24th	/sentinel
Respiratory syncytial virus infection	46	46	51	62	0.24
Pharyngoconjunctival fever	204	193	232	207	0.79
Group A streptococcal pharyngitis	833	929	949	876	3.34
Infectious gastroenteritis	2,017	1,925	1,988	1,742	6.65
Chickenpox	165	66	127	113	0.43
Hand, foot, and mouth disease	42	65	90	90	0.34
Erythema infectiosum	160	164	199	170	0.65
Exanthem subitum	181	197	177	180	0.69
Herpangina	26	32	60	118	0.45
Mumps	33	30	28	46	0.18
Kawasaki disease	6	2	6	5	0.02
Cold with exanthems	11	20	17	20	0.08
Influenza	66	63	50	29	0.07
Acute hemorrhagic conjunctivitis			2		
Epidemic keratoconjunctivitis	23	23	19	25	0.66
Bacterial meningitis	1	1		1	0.04
Aseptic meningitis	2			2	0.08
<i>Mycoplasma pneumoniae</i>	1	3	2	1	0.04
Chlamydial pneumonia (excluding psittacosis)		1		1	0.04
Infectious gastroenteritis (only by Rotavirus)	3	4		2	0.08
Influenza-Associated Hospitalizations		1		2	0.08

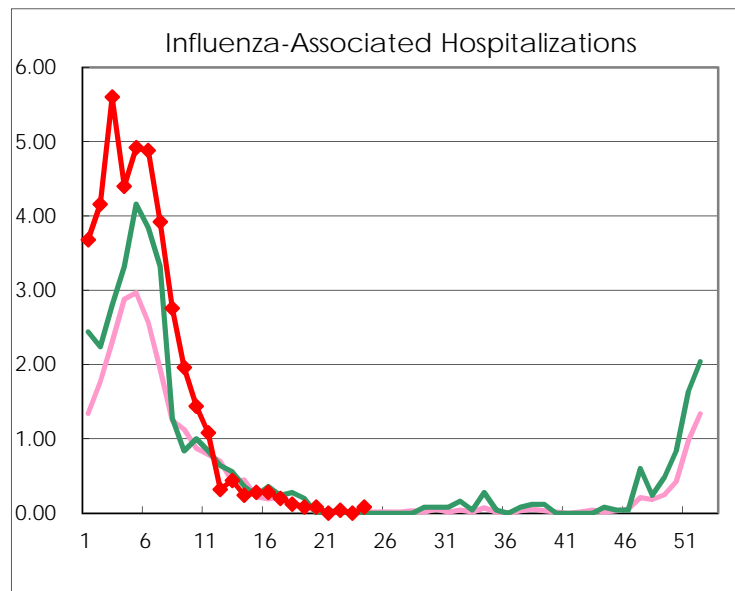
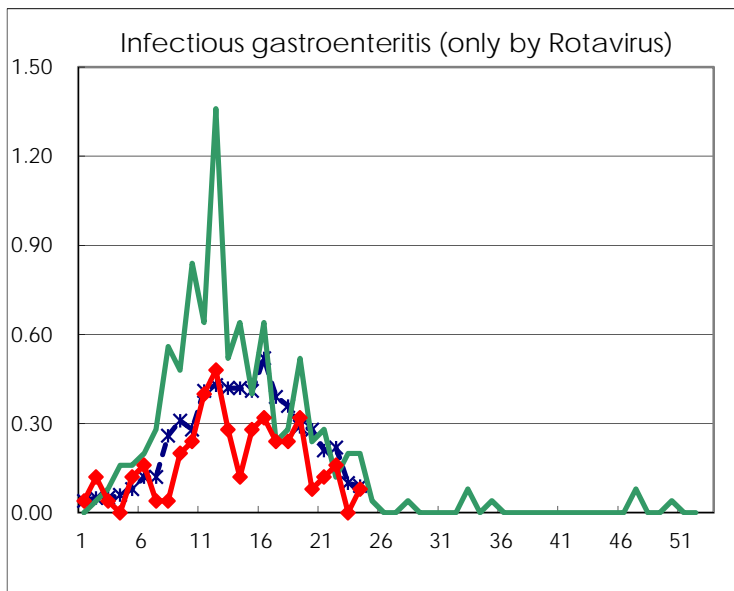
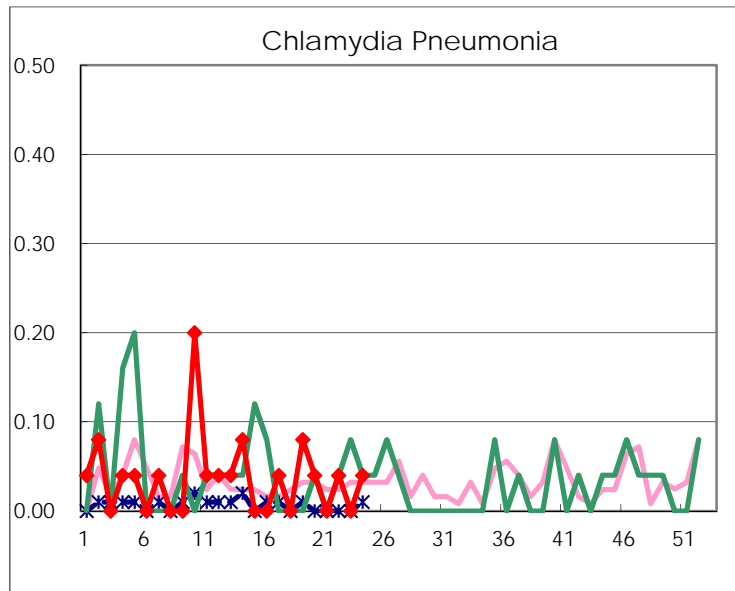
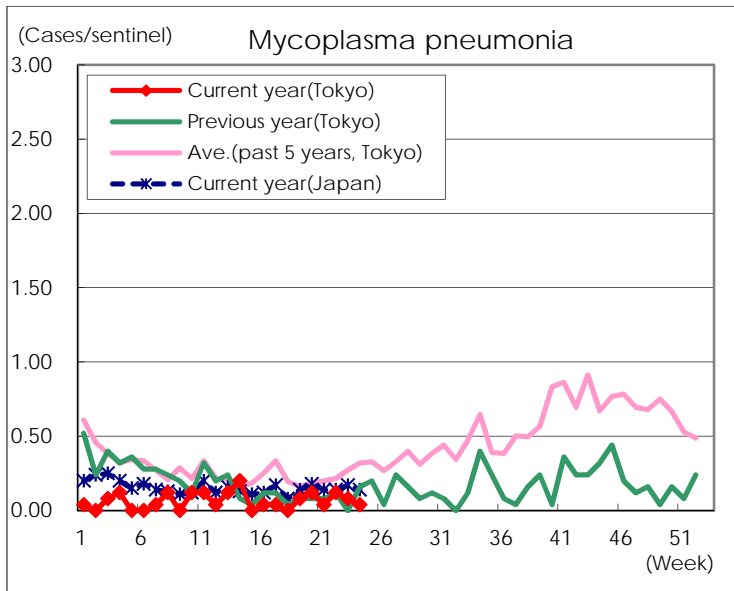
(Blank means 0.)

Disease Trend Graph (weekly reported cases per sentinel in comparison)









Number of sentinel facilities for weekly reporting		
Types of sentinels	Number of sentinels	Sentinels having reported
Pediatric	264	262
Influenza	419	414
Ophthalmic	39	38
Specially-designated	25	25