

28 June 2018 / Number 25

Surveillance System in Tokyo, Japan

The infectious diseases which all physicians must report

All physicians must report to health centers the incidence of the diseases which are shown at page one. Health centers electronically report the individual cases to Tokyo Metropolitan Infectious Disease Surveillance Center.

The infectious diseases required to be reported by the sentinels

The numbers of patients who visit the sentinel clinics or hospitals during a week are reported to health centers in Tokyo. And they electronically report the numbers to Tokyo Metropolitan Infectious Disease Surveillance Center. We have about 500 sentinel clinics and hospitals in Tokyo.

Tokyo Metropolitan Institute of Public Health

TEL:81-3-3363-3213 FAX:81-3-5332-7365

e-mail:www@tokyo-eiken.go.jp

URL:idsc.tokyo-eiken.go.jp/

Number of patients with the diseases which all physicians must report

Category	Diseases	Tokyo					Japan	
		22nd	23rd	24th	25th	Cum 2018	25th	Cum 2018
I	Ebola hemorrhagic fever							
	Crimean-Congo hemorrhagic fever							
	Smallpox							
	South American hemorrhagic fever							
	Plague							
	Marburg disease							
	Lassa fever							
II	Acute poliomyelitis							
	Tuberculosis	93	61	61	60	1,602	356	10,009
	Diphtheria							
	Severe Acute Respiratory Syndrome(SARS)							
	Middle East Respiratory Syndrome (MERS)							
	Avian influenza H5N1							
	Avian influenza H7N9							
III	Cholera							2
	Shigellosis	1	2		1	21	1	88
	Enterohemorrhagic Escherichia coli infection	8	14	12	7	93	105	905
	Typhoid fever					5		18
	Paratyphoid fever	1				6		10
IV	Hepatitis E	2	2	5	2	43	10	195
	West Nile fever							
	Hepatitis A	10	16	14	11	223	30	450
	Echinococcosis							6
	Yellow fever							
	Psittacosis						1	4
	Omsk hemorrhagic fever							
	Relapsing fever							
	Kyasanur forest disease							
	Q fever							1
	Rabies							
	Coccidioidomycosis							1
	Monkeypox							
	Zika virus infection							
	Severe Fever with Thrombocytopenia Syndrome							35
	Hemorrhagic fever with renal syndrome							
	Western equine encephalitis							
	Tick-borne encephalitis							1
	Anthrax							
	Chikungunya fever							1
	Scrub typhus(Tsutsugamushi disease)					4	2	86
	Dengue fever				1	19	2	61
	Eastern equine encephalitis							
	Avian influenza (excluding H5N1 and H7N9)							
	Nipah virus infection							
	Japanese spotted fever						6	75
	Japanese encephalitis							
	Hantavirus pulmonary syndrome							
	Herpes B virus infection							
	Glanders							
	Brucellosis							2
	Venezuelan equine encephalitis							
	Hendra virus infection							
Epidemic typhus								
Botulism					1		3	
Malaria			2	2	7	1	23	
Tularemia								
Lyme disease								
Lyssavirus infection(excluding rabies)								
Rift valley fever								
Melioidosis					1		1	
Legionellosis	1		2	7	44	63	720	
Leptospirosis	1				1		1	
Rocky mountain spotted fever								

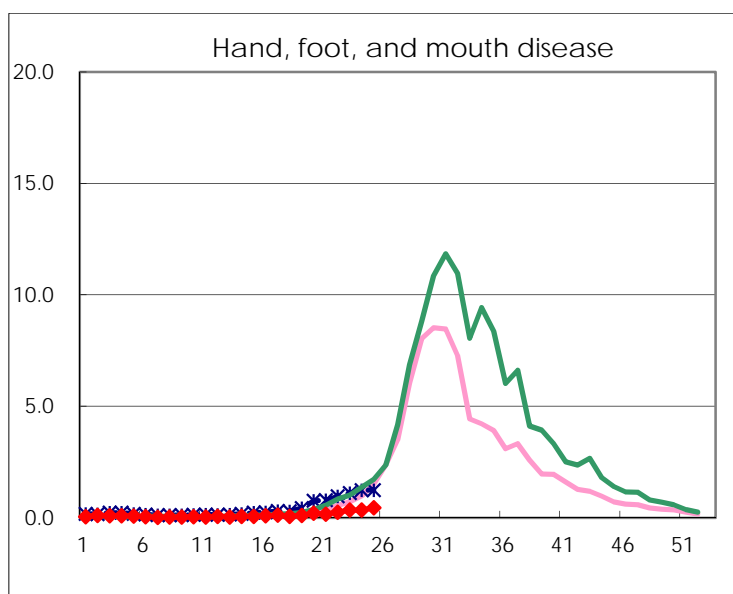
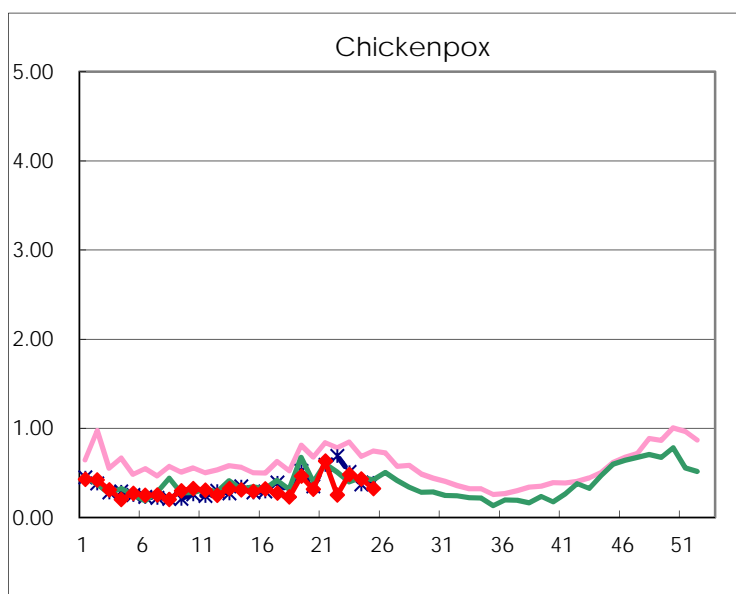
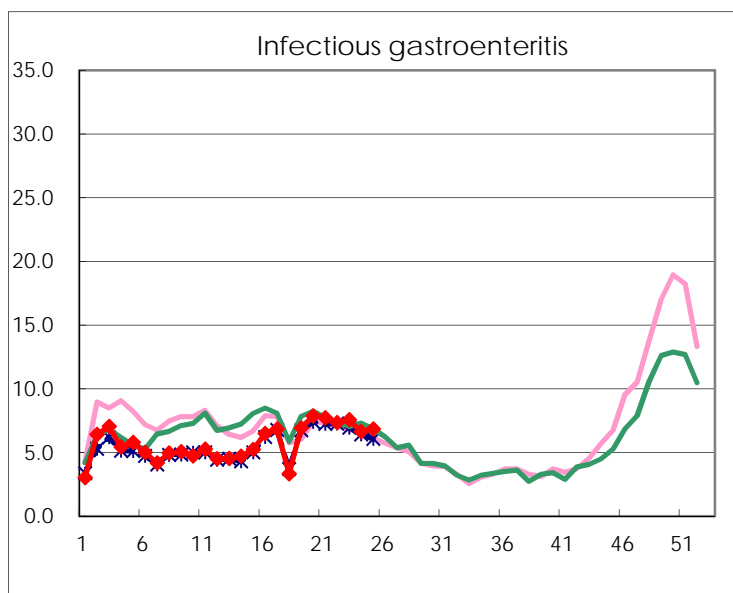
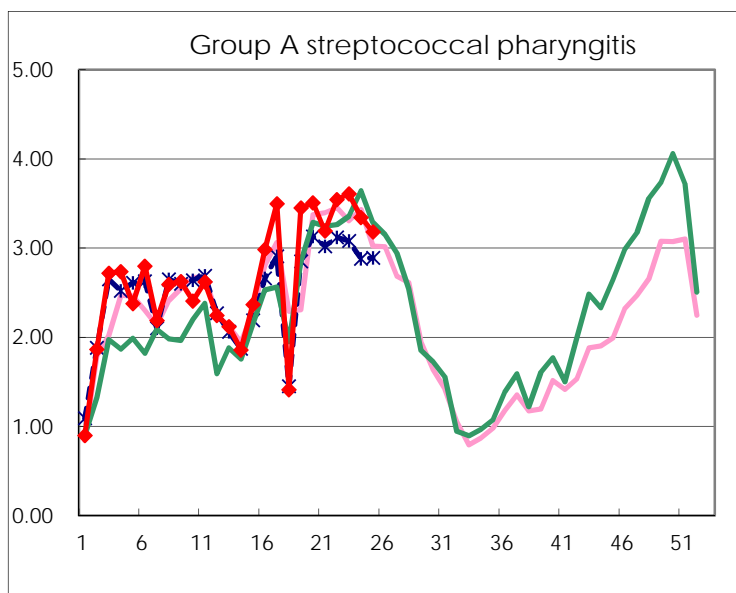
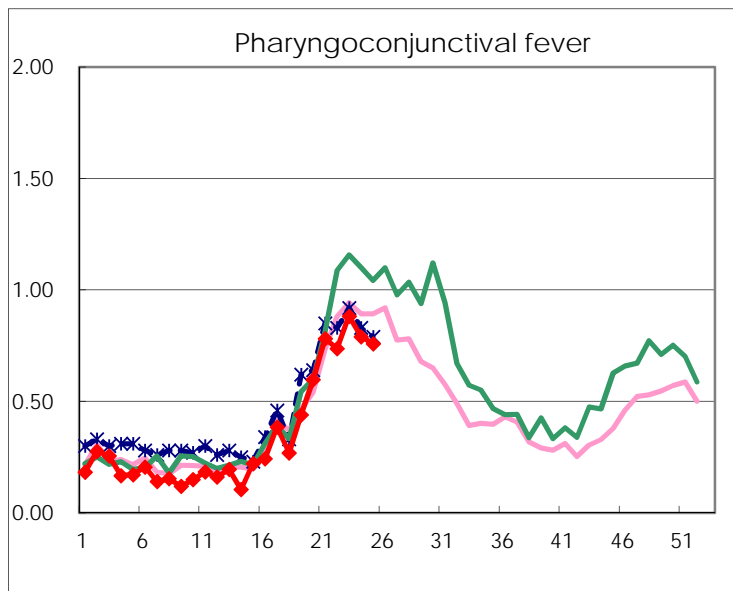
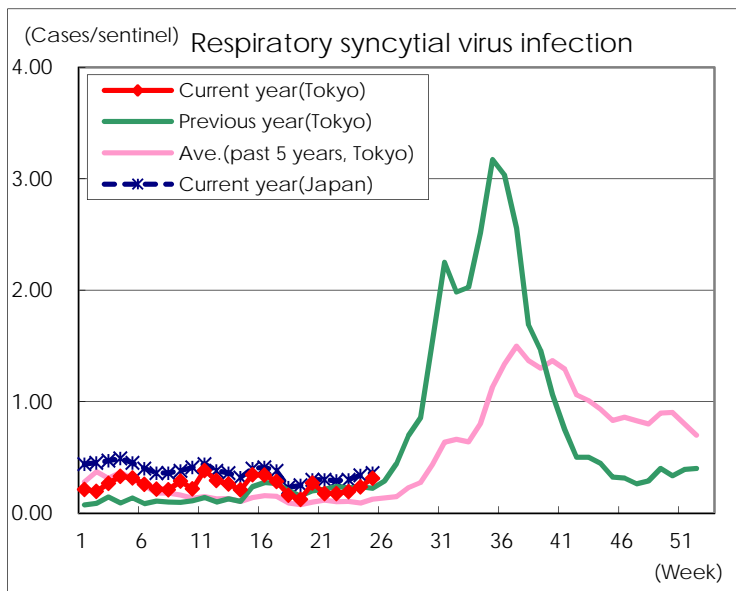
Category	Diseases	Tokyo					Japan	
		22nd	23rd	24th	25th	Cum 2018	25th	Cum 2018
V	Amebiasis	2	1	7	1	73	6	383
	Viral hepatitis(excluding hepatitis A and E)	1	2	1	1	21	1	95
	CRE infection	6	8	1	3	86	26	780
	Acute Flaccid Paralysis (excluding Acute poliomyelitis)					2		10
	Acute encephalitis(excluding JE and WNE)			1	1	36	8	365
	Cryptosporidiosis	1				2		10
	Creutzfeldt-Jakob disease		1		3	11	4	101
	Severe invasive streptococcal infections(TSLs)	2		1	1	52	8	372
	Acquired immunodeficiency syndrome (AIDS)	8	13	8	11	192	17	596
	Giardiasis				1	11	3	38
	Invasive <i>Haemophilus influenzae</i> disease	2		1		16	5	239
	Invasive meningococcal disease					5	1	19
	Invasive pneumococcal disease	10	9	6	6	233	28	1,957
	Varicella (limited to hospitalized case)	1	3	3		26	8	202
	Congenital rubella syndrome							
	Syphilis	31	45	33	43	811	103	3,086
	Disseminated cryptococcosis					10	1	83
	Tetanus					1	1	45
	Vancomycin-resistant <i>S. aureus</i> infection							
	Vancomycin-resistant <i>Enterococcus</i> infection			1		2		25
	Pertussis	13	19	32	36	259	152	2,538
Rubella			1	1	7	4	39	
Measles	1		1		13	1	170	
MDRA infection			1		3		9	

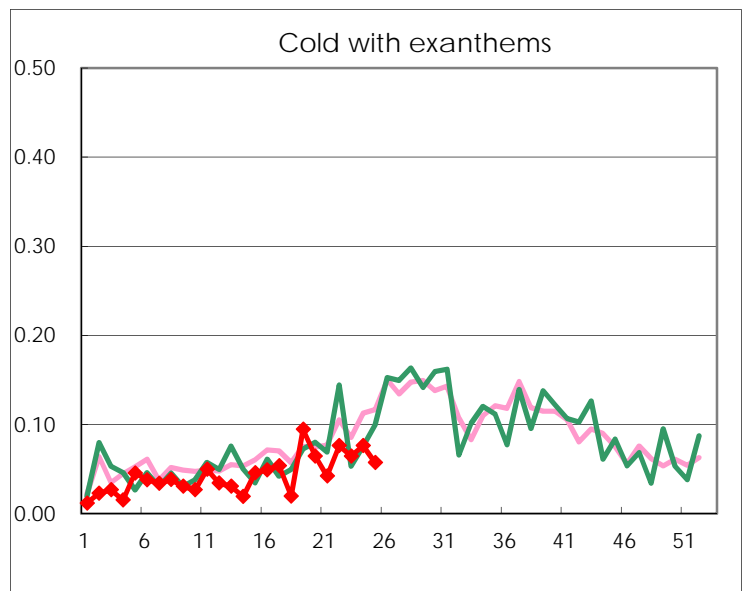
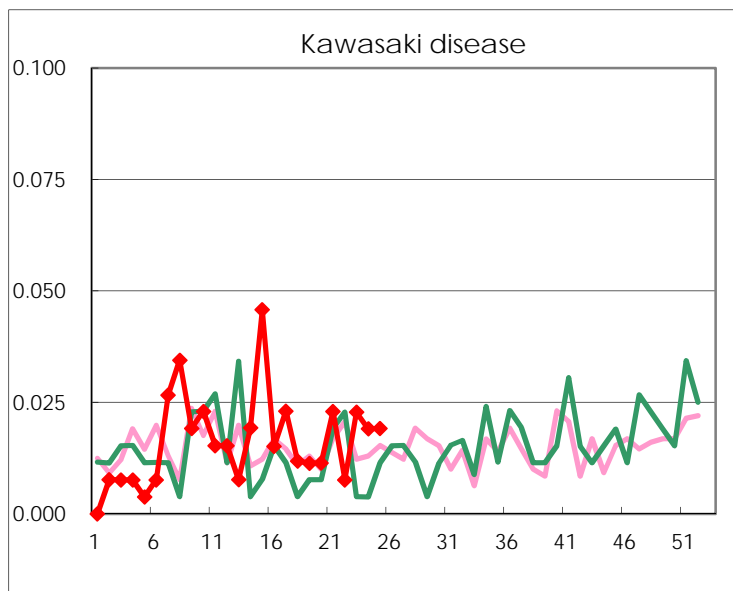
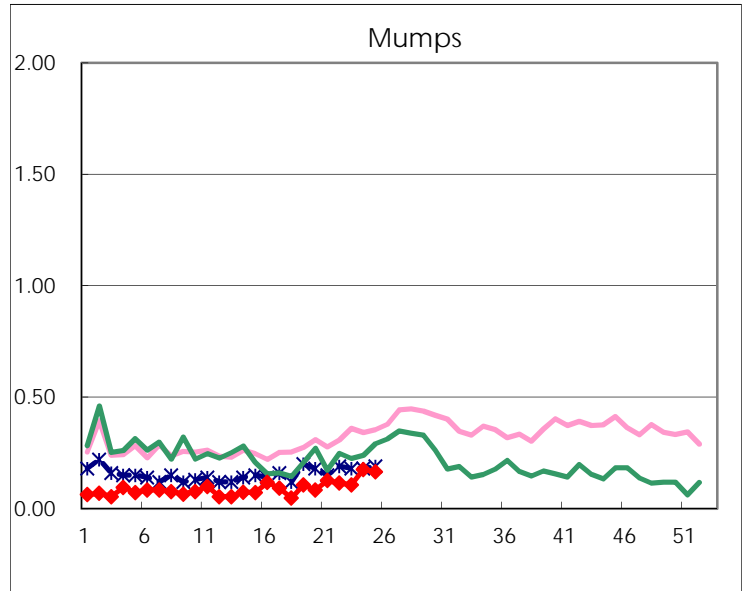
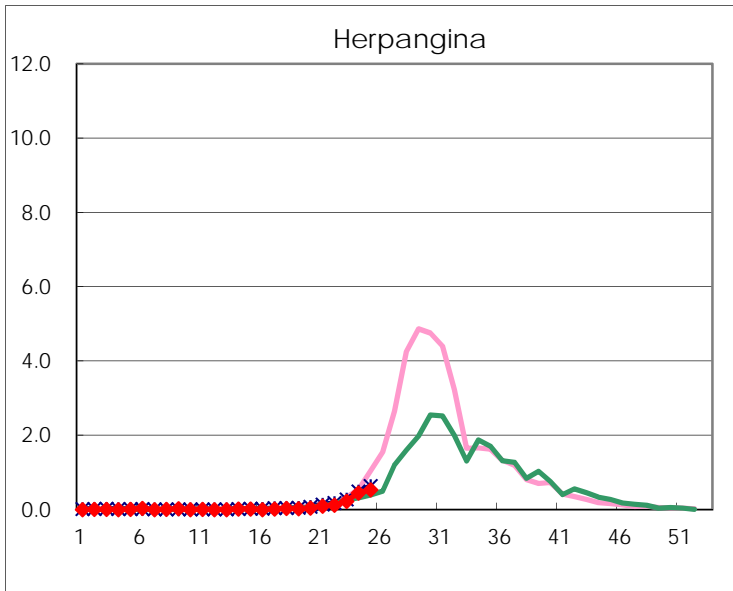
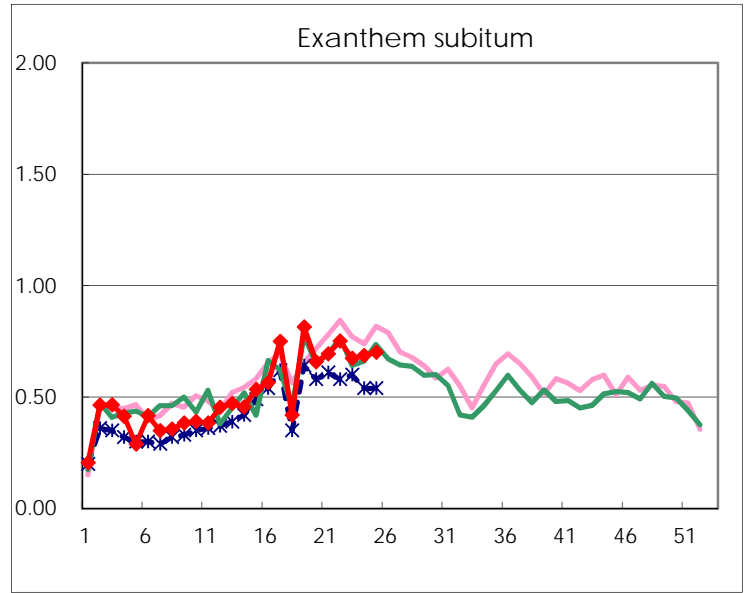
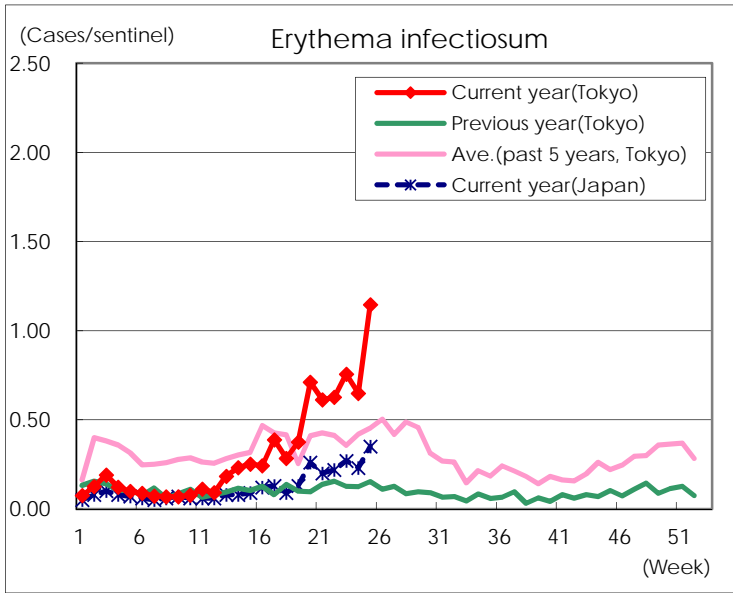
Number of patients with the diseases to be reported
by the designated clinics and hospitals

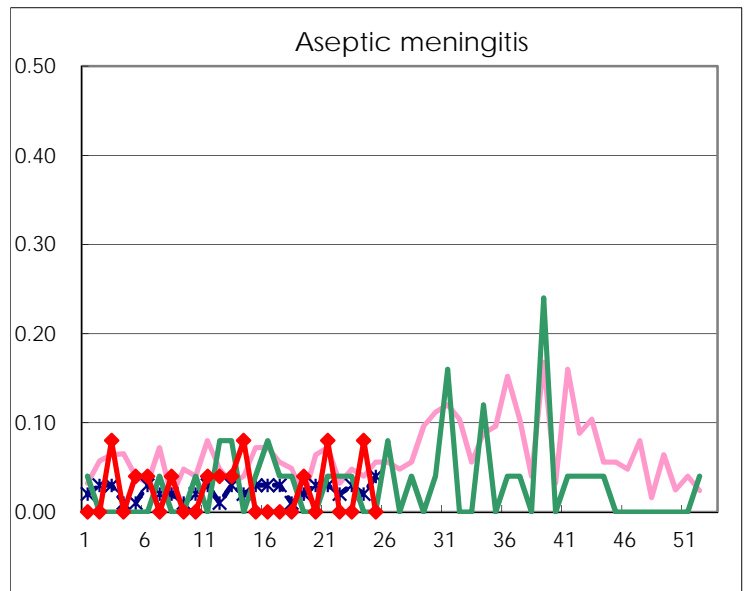
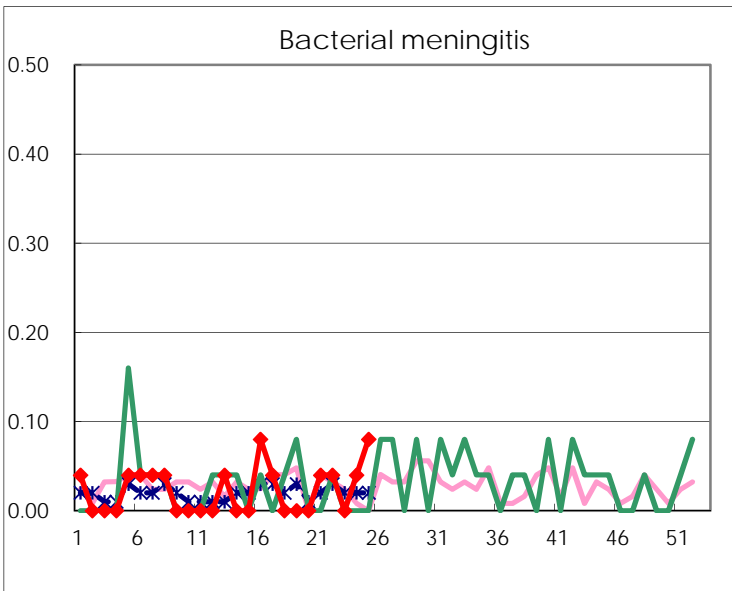
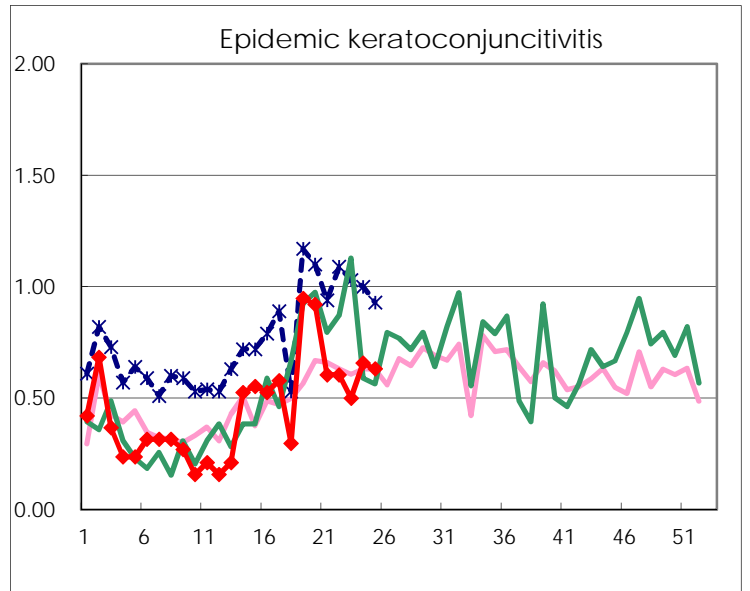
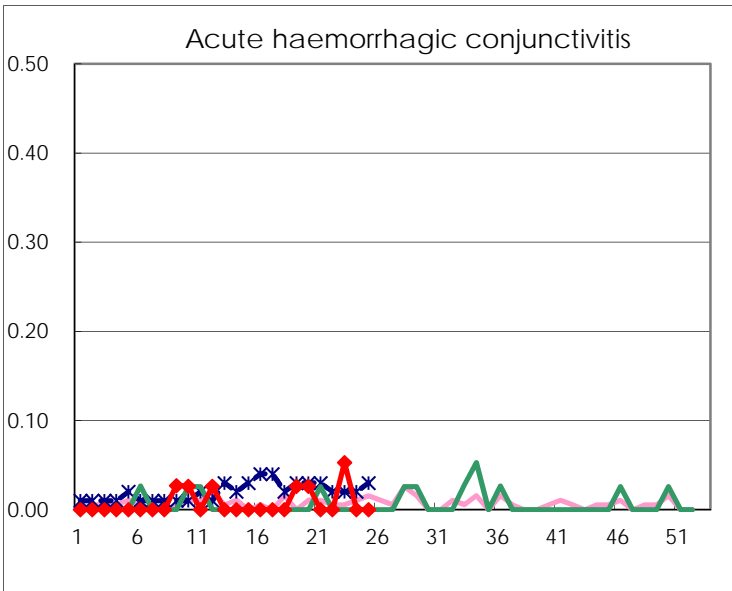
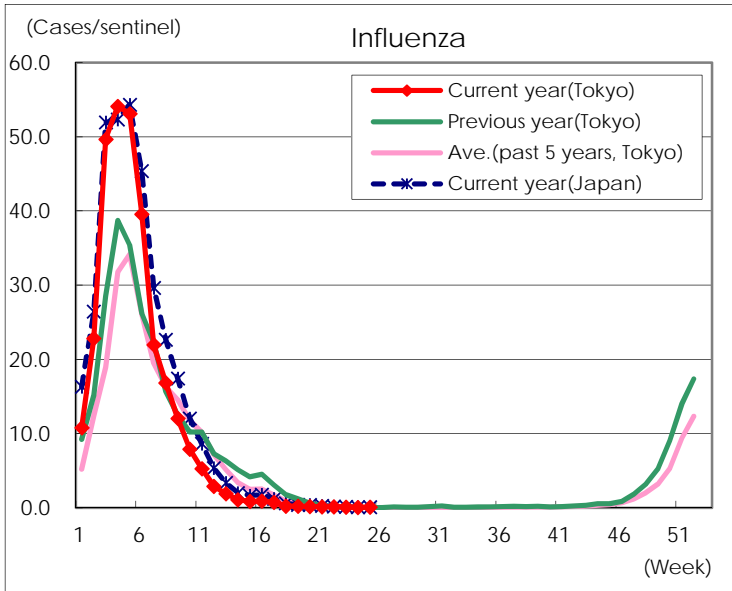
Diseases	Tokyo				
	22nd	23rd	24th	25th	/sentinel
Respiratory syncytial virus infection	46	51	62	82	0.31
Pharyngoconjunctival fever	193	232	207	198	0.76
Group A streptococcal pharyngitis	929	949	876	830	3.18
Infectious gastroenteritis	1,925	1,988	1,742	1,787	6.85
Chickenpox	66	127	113	84	0.32
Hand, foot, and mouth disease	65	90	90	117	0.45
Erythema infectiosum	164	199	170	299	1.15
Exanthem subitum	197	177	180	183	0.70
Herpangina	32	60	118	139	0.53
Mumps	30	28	46	43	0.16
Kawasaki disease	2	6	5	5	0.02
Cold with exanthems	20	17	20	15	0.06
Influenza	63	50	29	35	0.08
Acute hemorrhagic conjunctivitis		2			
Epidemic keratoconjunctivitis	23	19	25	24	0.63
Bacterial meningitis	1		1	2	0.08
Aseptic meningitis			2		
<i>Mycoplasma pneumoniae</i>	3	2	1	2	0.08
Chlamydial pneumonia (excluding psittacosis)	1		1	1	0.04
Infectious gastroenteritis (only by Rotavirus)	4		2	1	0.04
Influenza-Associated Hospitalizations	1		2	1	0.04

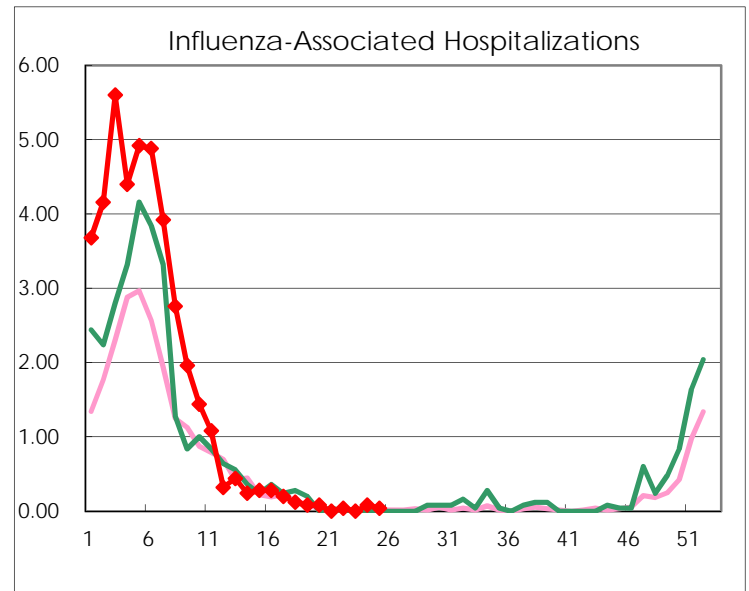
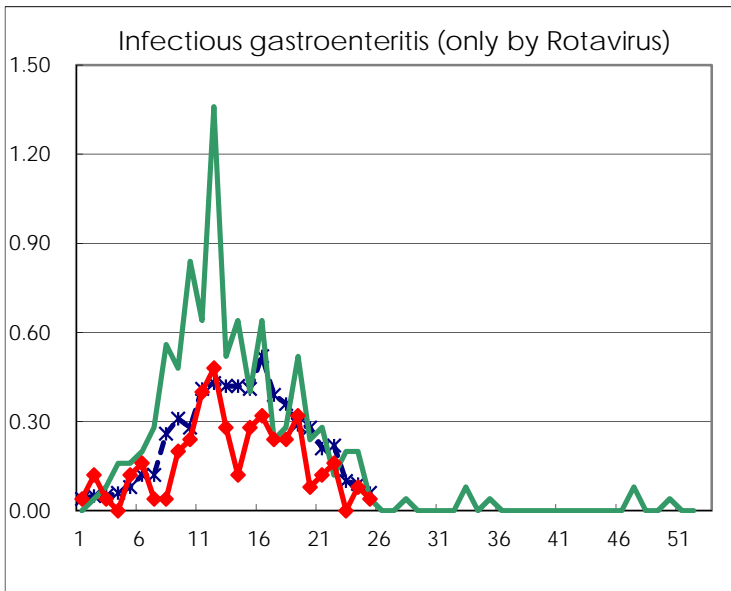
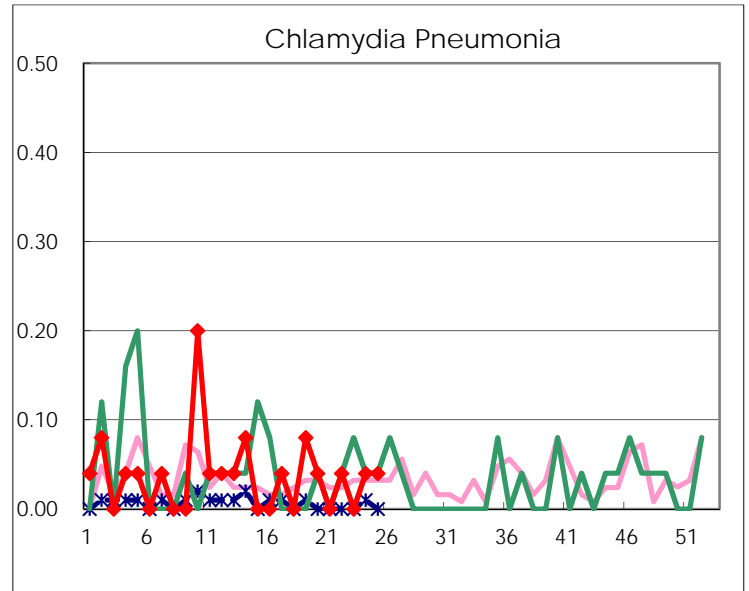
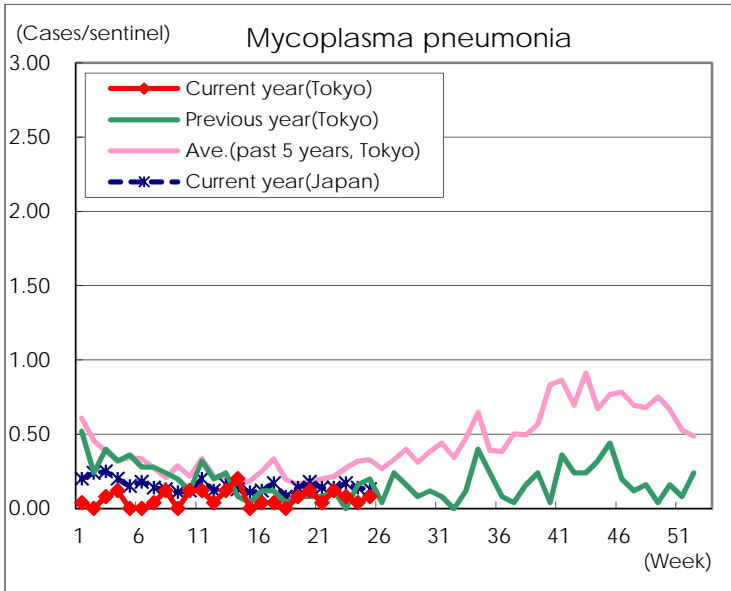
(Blank means 0.)

Disease Trend Graph (weekly reported cases per sentinel in comparison)









Number of sentinel facilities for weekly reporting		
Types of sentinels	Number of sentinels	Sentinels having reported
Pediatric	264	261
Influenza	419	415
Ophthalmic	39	38
Specially-designated	25	25