

5 July 2018 / Number 26

Surveillance System in Tokyo, Japan

The infectious diseases which all physicians must report

All physicians must report to health centers the incidence of the diseases which are shown at page one. Health centers electronically report the individual cases to Tokyo Metropolitan Infectious Disease Surveillance Center.

The infectious diseases required to be reported by the sentinels

The numbers of patients who visit the sentinel clinics or hospitals during a week are reported to health centers in Tokyo. And they electronically report the numbers to Tokyo Metropolitan Infectious Disease Surveillance Center. We have about 500 sentinel clinics and hospitals in Tokyo.

Tokyo Metropolitan Institute of Public Health

TEL:81-3-3363-3213 FAX:81-3-5332-7365

e-mail:www@tokyo-eiken.go.jp

URL:idsc.tokyo-eiken.go.jp/

Number of patients with the diseases which all physicians must report

Category	Diseases	Tokyo					Japan	
		23rd	24th	25th	26th	Cum 2018	26th	Cum 2018
I	Ebola hemorrhagic fever							
	Crimean-Congo hemorrhagic fever							
	Smallpox							
	South American hemorrhagic fever							
	Plague							
	Marburg disease							
	Lassa fever							
II	Acute poliomyelitis							
	Tuberculosis	61	62	66	42	1,646	368	10,426
	Diphtheria							
	Severe Acute Respiratory Syndrome(SARS)							
	Middle East Respiratory Syndrome (MERS)							
	Avian influenza H5N1							
	Avian influenza H7N9							
III	Cholera							2
	Shigellosis	2		1	1	22	1	89
	Enterohemorrhagic Escherichia coli infection	14	11	8	9	102	69	984
	Typhoid fever					5		18
	Paratyphoid fever					6		10
IV	Hepatitis E	2	5	2		43	7	202
	West Nile fever							
	Hepatitis A	16	14	11	7	230	19	472
	Echinococcosis							6
	Yellow fever							
	Psittacosis							4
	Omsk hemorrhagic fever							
	Relapsing fever							
	Kyasanur forest disease							
	Q fever							1
	Rabies							
	Coccidioidomycosis							1
	Monkeypox							
	Zika virus infection							
	Severe Fever with Thrombocytopenia Syndrome						3	38
	Hemorrhagic fever with renal syndrome							
	Western equine encephalitis							
	Tick-borne encephalitis							1
	Anthrax							
	Chikungunya fever							1
	Scrub typhus(Tsutsugamushi disease)					4	2	88
	Dengue fever			1	1	20	1	62
	Eastern equine encephalitis							
	Avian influenza (excluding H5N1 and H7N9)							
	Nipah virus infection							
	Japanese spotted fever						12	87
	Japanese encephalitis							
	Hantavirus pulmonary syndrome							
	Herpes B virus infection							
	Glanders							
	Brucellosis							2
	Venezuelan equine encephalitis							
	Hendra virus infection							
Epidemic typhus								
Botulism					1		3	
Malaria		2	2		7		23	
Tularemia								
Lyme disease							1	
Lyssavirus infection(excluding rabies)								
Rift valley fever								
Melioidosis					1		1	
Legionellosis		2	8	5	50	53	785	
Leptospirosis					1	1	2	
Rocky mountain spotted fever								

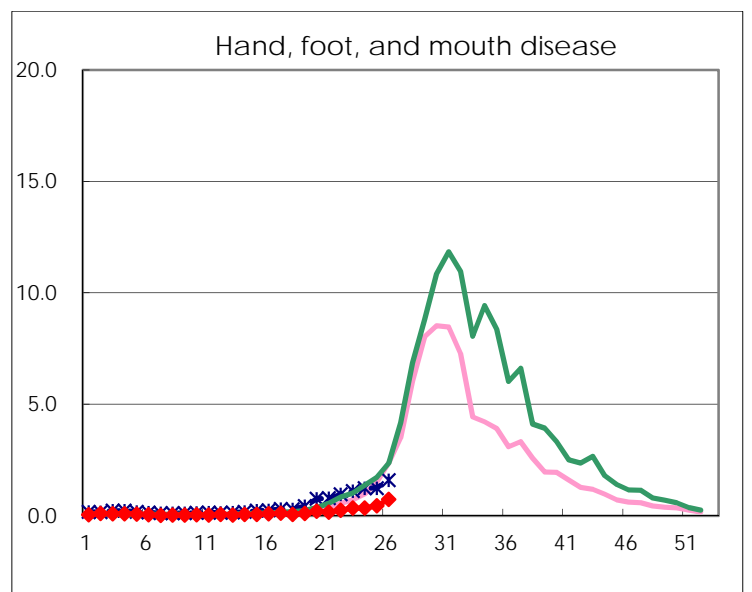
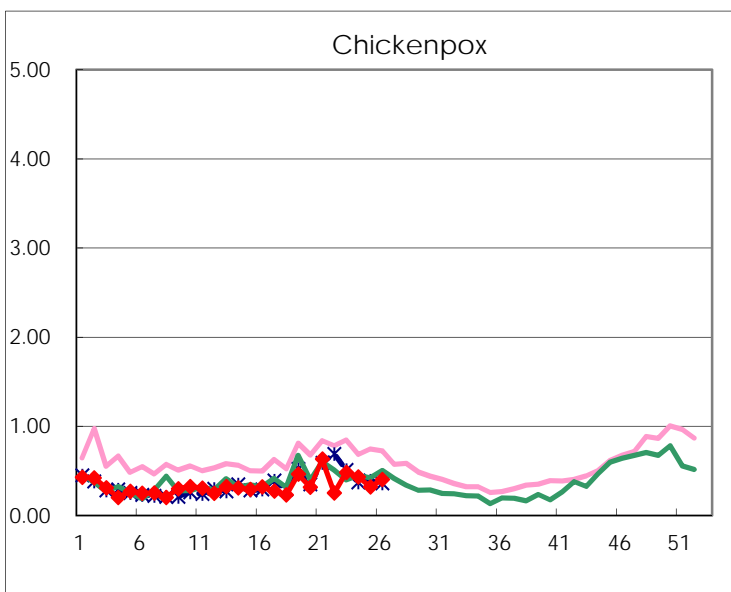
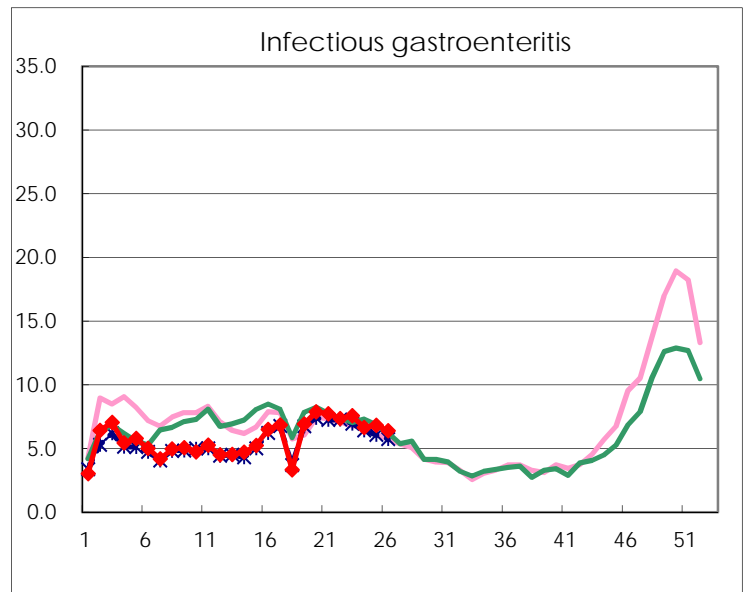
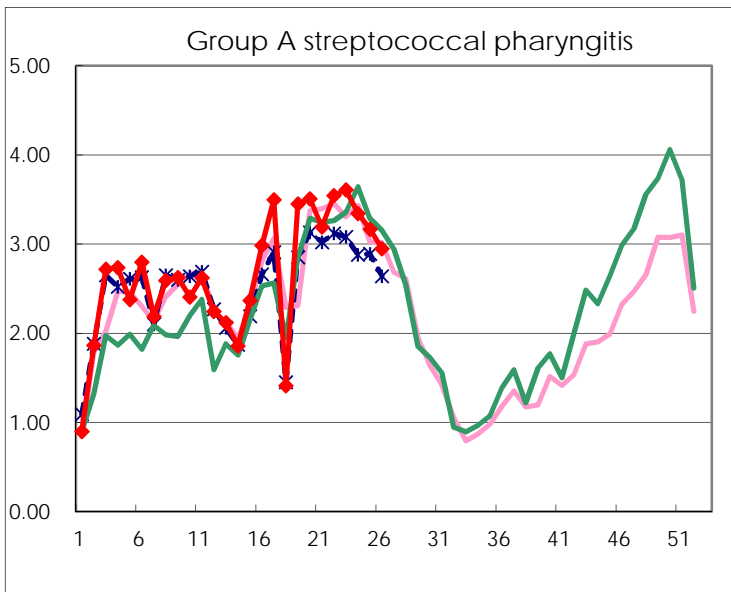
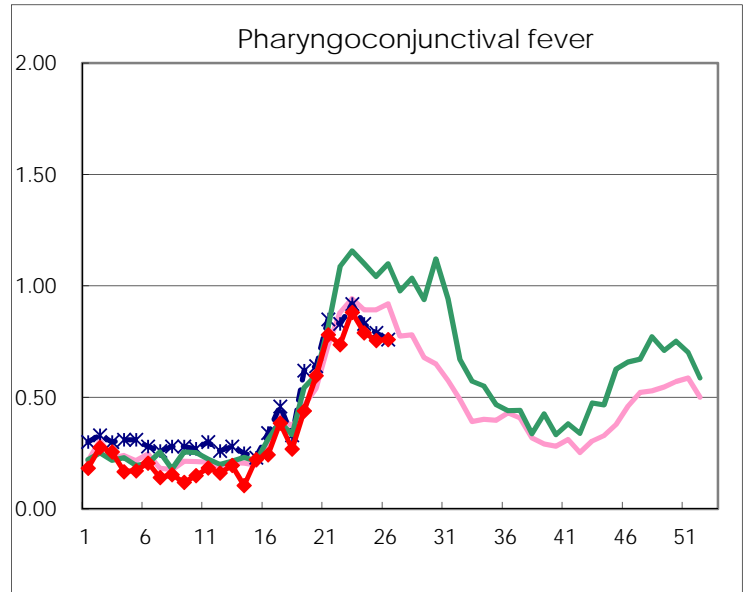
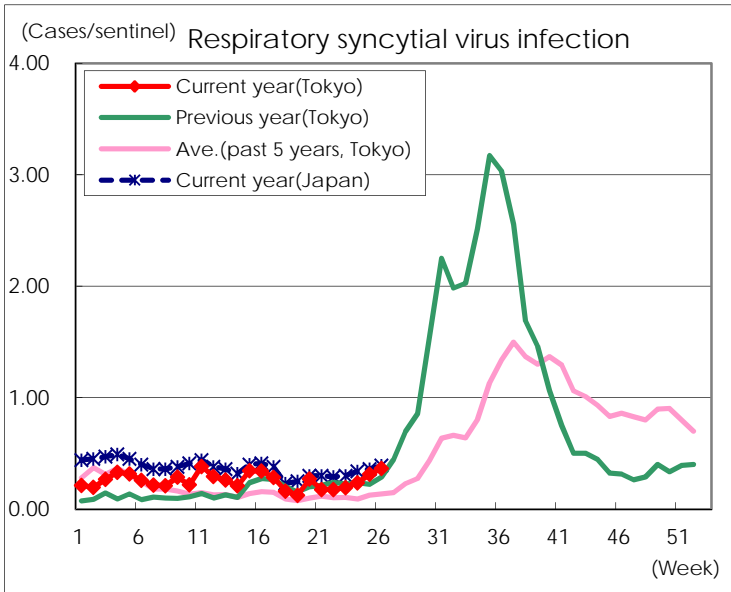
Category	Diseases	Tokyo					Japan	
		23rd	24th	25th	26th	Cum 2018	26th	Cum 2018
V	Amebiasis	1	7	1	10	83	17	408
	Viral hepatitis(excluding hepatitis A and E)	2	1	1	1	22	2	100
	CRE infection	8	1	4	2	89	24	814
	Acute Flaccid Paralysis (excluding Acute poliomyelitis)					2		10
	Acute encephalitis(excluding JE and WNE)		1	1	1	37	6	377
	Cryptosporidiosis					2		10
	Creutzfeldt-Jakob disease	1		3		11	1	103
	Severe invasive streptococcal infections(TSLs)		1	2	1	54	10	387
	Acquired immunodeficiency syndrome (AIDS)	13	8	11	9	201	15	618
	Giardiasis			1		11	1	39
	Invasive <i>Haemophilus influenzae</i> disease		1		1	17	7	248
	Invasive meningococcal disease					5	2	21
	Invasive pneumococcal disease	9	6	6	3	237	27	2,002
	Varicella (limited to hospitalized case)	3	3	1		27	7	211
	Congenital rubella syndrome							
	Syphilis	45	33	43	34	845	98	3,236
	Disseminated cryptococcosis					10	2	87
	Tetanus					1	3	50
	Vancomycin-resistant <i>S. aureus</i> infection							
	Vancomycin-resistant <i>Enterococcus</i> infection		1			2	1	26
	Pertussis	19	32	37	32	292	188	2,813
Rubella		1	1	1	8	3	43	
Measles		1			13	6	176	
MDRA infection		1			3		9	

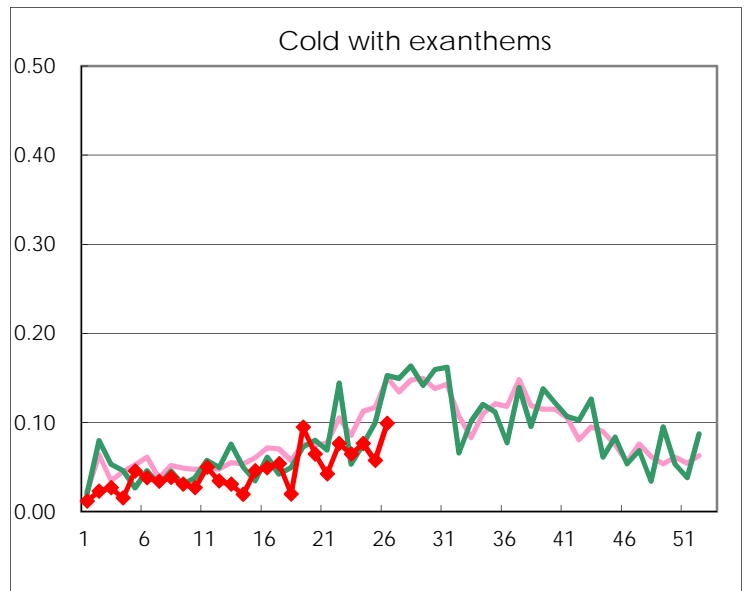
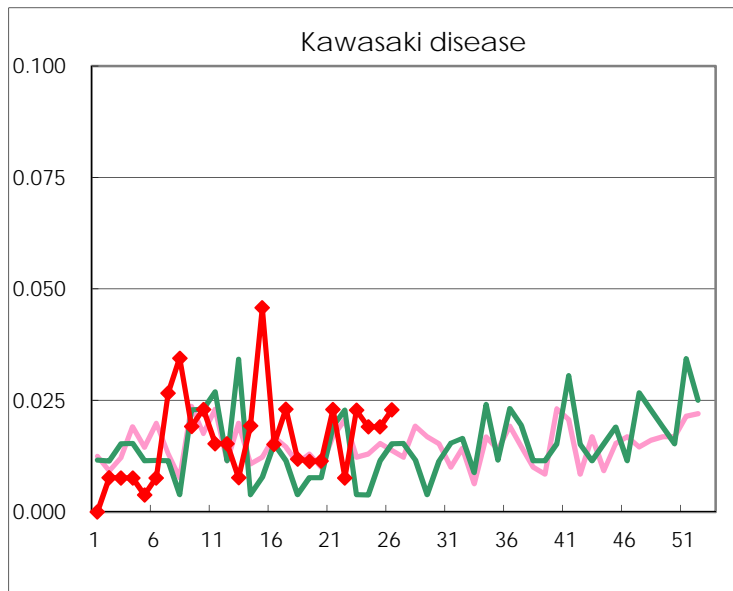
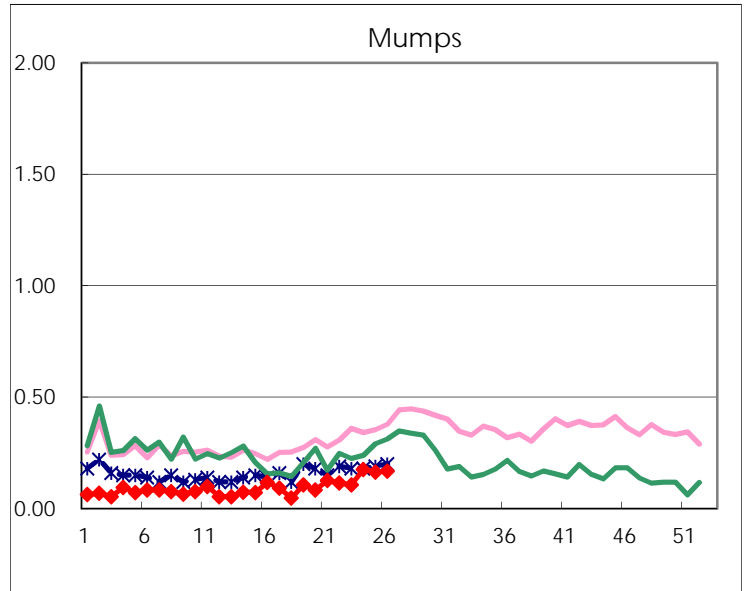
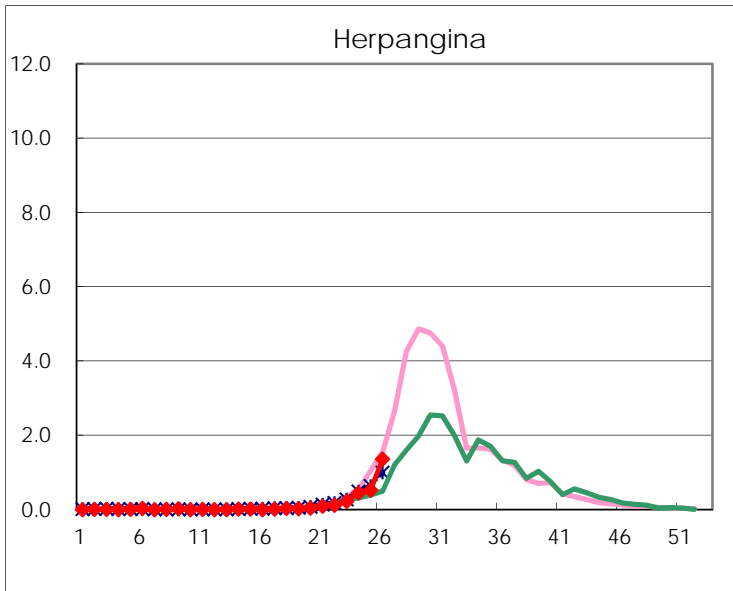
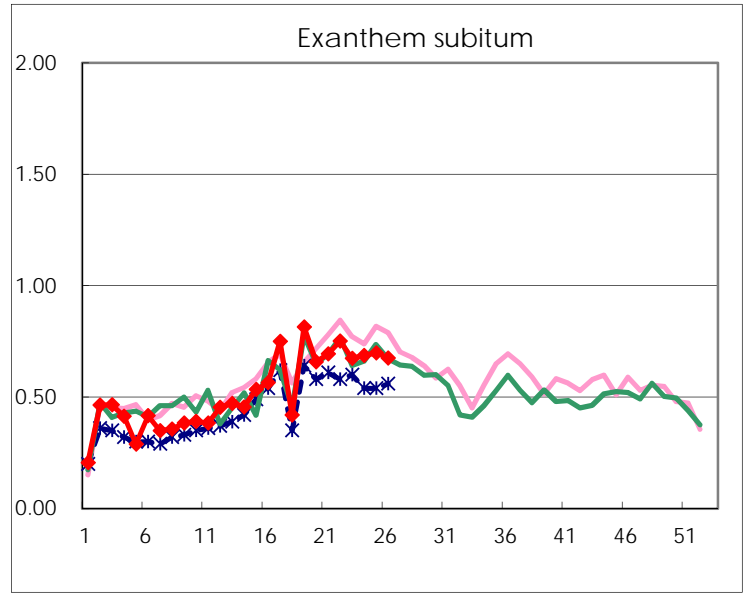
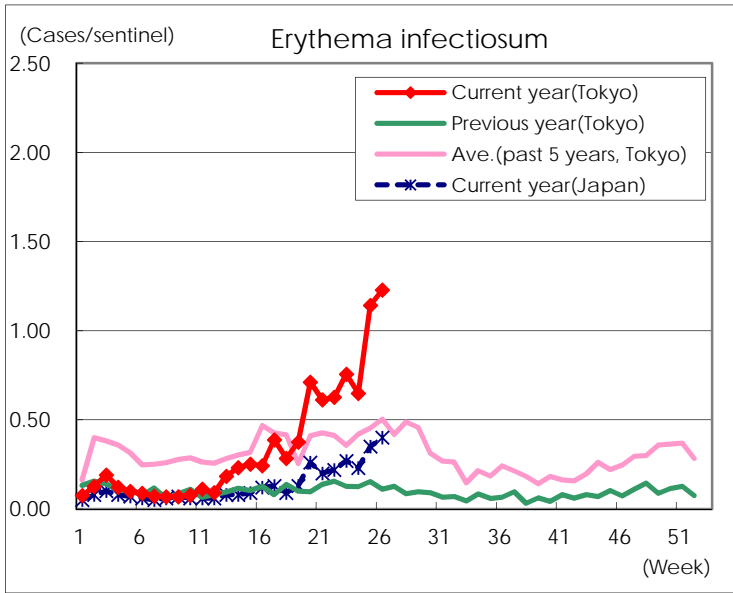
Number of patients with the diseases to be reported
by the designated clinics and hospitals

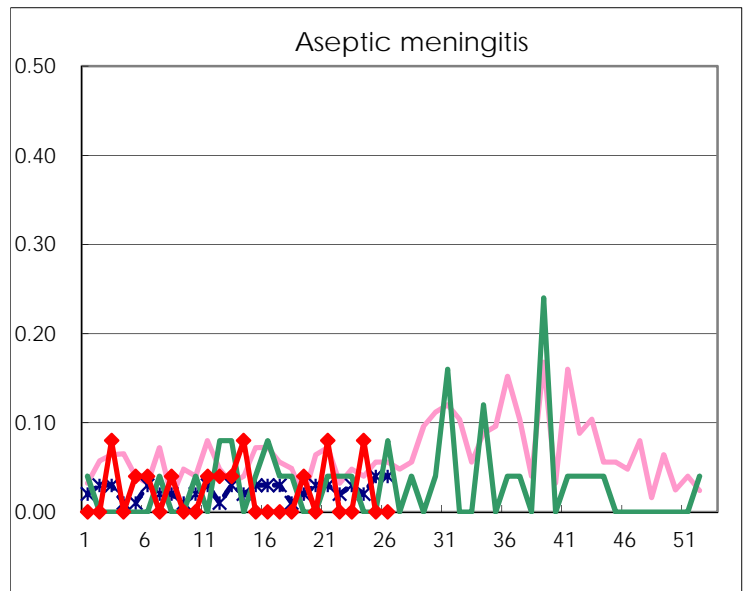
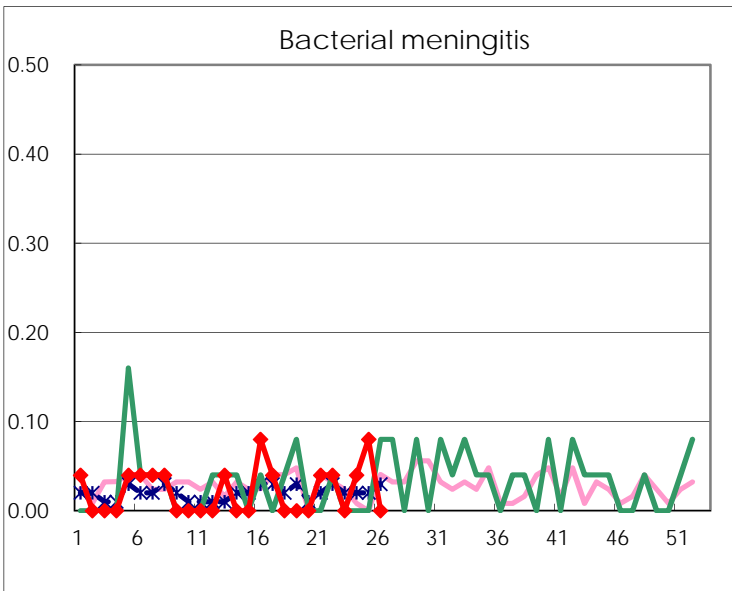
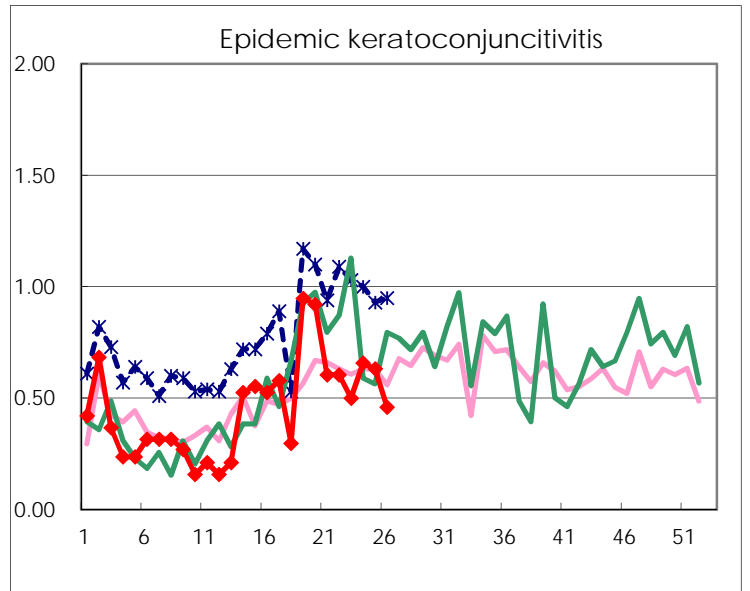
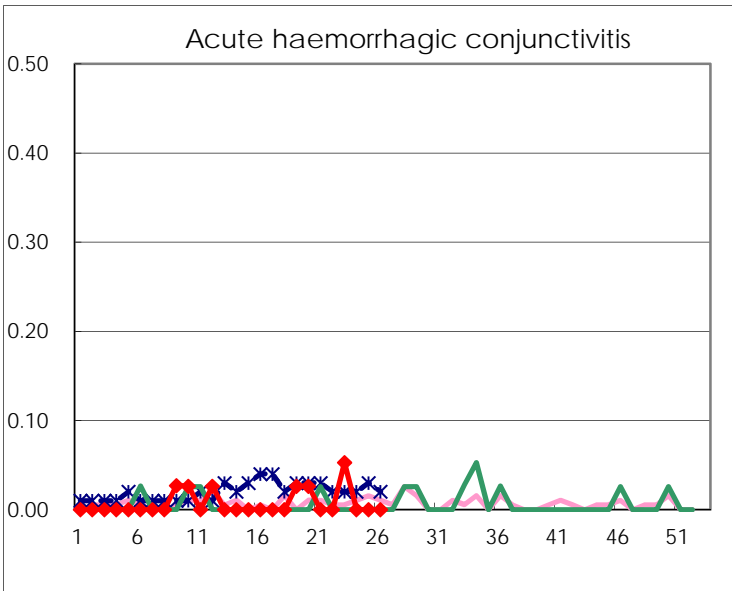
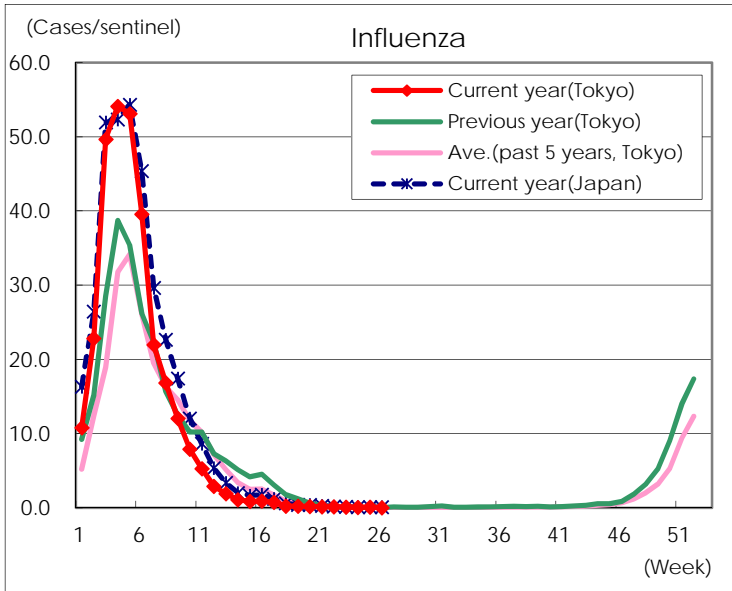
Diseases	Tokyo				
	23rd	24th	25th	26th	/sentinel
Respiratory syncytial virus infection	51	62	82	96	0.37
Pharyngoconjunctival fever	232	207	198	199	0.76
Group A streptococcal pharyngitis	949	876	830	772	2.95
Infectious gastroenteritis	1,988	1,742	1,787	1,674	6.39
Chickenpox	127	113	84	105	0.40
Hand, foot, and mouth disease	90	90	117	192	0.73
Erythema infectiosum	199	170	299	322	1.23
Exanthem subitum	177	180	183	177	0.68
Herpangina	60	118	139	356	1.36
Mumps	28	46	43	44	0.17
Kawasaki disease	6	5	5	6	0.02
Cold with exanthems	17	20	15	26	0.10
Influenza	50	29	35	13	0.03
Acute hemorrhagic conjunctivitis	2				
Epidemic keratoconjunctivitis	19	25	24	17	0.46
Bacterial meningitis		1	2		
Aseptic meningitis		2			
<i>Mycoplasma pneumoniae</i>	2	1	2	1	0.04
Chlamydial pneumonia (excluding psittacosis)		1	1	2	0.08
Infectious gastroenteritis (only by Rotavirus)		2	1		
Influenza-Associated Hospitalizations		2	1		

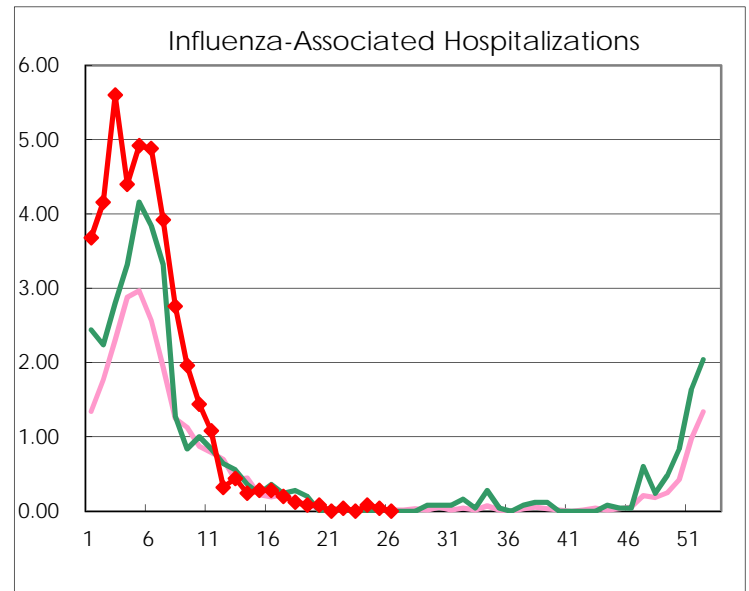
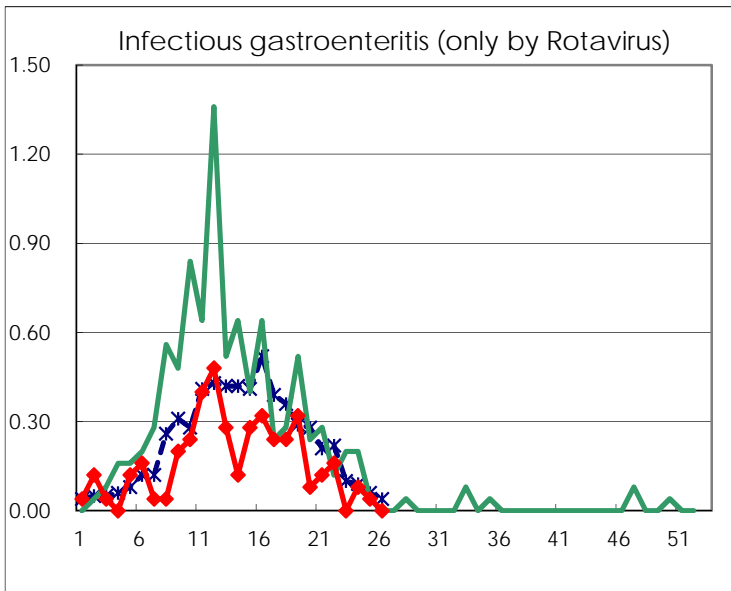
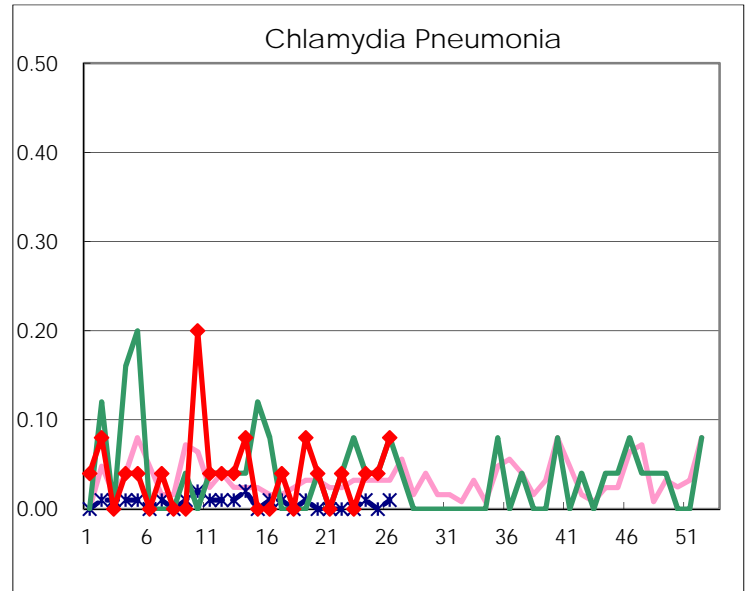
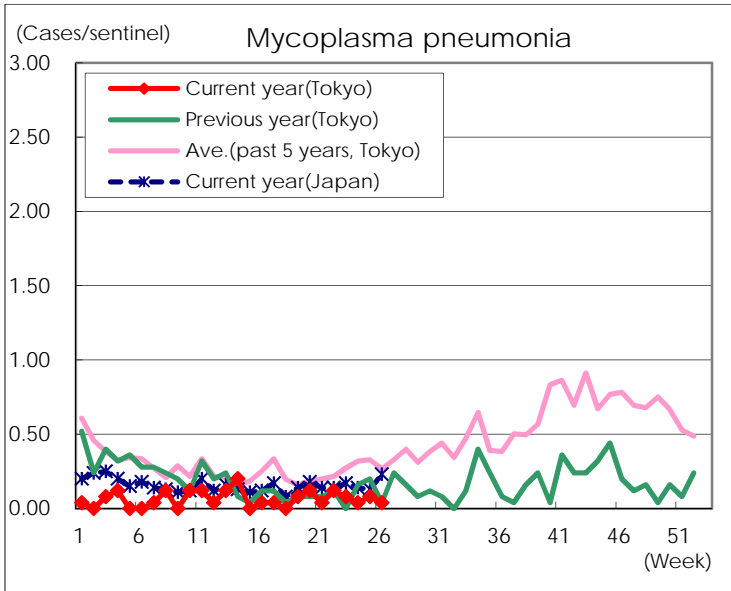
(Blank means 0.)

Disease Trend Graph (weekly reported cases per sentinel in comparison)









Number of sentinel facilities for weekly reporting		
Types of sentinels	Number of sentinels	Sentinels having reported
Pediatric	264	262
Influenza	419	411
Ophthalmic	39	37
Specially-designated	25	25