

12 July 2018 / Number 27

Surveillance System in Tokyo, Japan

The infectious diseases which all physicians must report

All physicians must report to health centers the incidence of the diseases which are shown at page one. Health centers electronically report the individual cases to Tokyo Metropolitan Infectious Disease Surveillance Center.

The infectious diseases required to be reported by the sentinels

The numbers of patients who visit the sentinel clinics or hospitals during a week are reported to health centers in Tokyo. And they electronically report the numbers to Tokyo Metropolitan Infectious Disease Surveillance Center. We have about 500 sentinel clinics and hospitals in Tokyo.

Tokyo Metropolitan Institute of Public Health

TEL:81-3-3363-3213 FAX:81-3-5332-7365

e-mail:www@tokyo-eiken.go.jp

URL:idsc.tokyo-eiken.go.jp/

Number of patients with the diseases which all physicians must report

Category	Diseases	Tokyo					Japan	
		24th	25th	26th	27th	Cum 2018	27th	Cum 2018
I	Ebola hemorrhagic fever							
	Crimean-Congo hemorrhagic fever							
	Smallpox							
	South American hemorrhagic fever							
	Plague							
	Marburg disease							
	Lassa fever							
II	Acute poliomyelitis							
	Tuberculosis	62	65	45	64	1,712	358	10,887
	Diphtheria							
	Severe Acute Respiratory Syndrome(SARS)							
	Middle East Respiratory Syndrome (MERS)							
	Avian influenza H5N1							
	Avian influenza H7N9							
III	Cholera							2
	Shigellosis		1	2	1	24	1	93
	Enterohemorrhagic Escherichia coli infection	11	9	10	9	113	79	1,064
	Typhoid fever					5		18
	Paratyphoid fever					6	1	11
IV	Hepatitis E	5	2		5	48	13	220
	West Nile fever							
	Hepatitis A	14	11	7	12	242	32	510
	Echinococcosis							7
	Yellow fever							
	Psittacosis							4
	Omsk hemorrhagic fever							
	Relapsing fever							1
	Kyasanur forest disease							
	Q fever							1
	Rabies							
	Coccidioidomycosis							1
	Monkeypox							
	Zika virus infection							
	Severe Fever with Thrombocytopenia Syndrome						1	39
	Hemorrhagic fever with renal syndrome							
	Western equine encephalitis							
	Tick-borne encephalitis							1
	Anthrax							
	Chikungunya fever							1
	Scrub typhus(Tsutsugamushi disease)					4	1	89
	Dengue fever		1	1	1	21	3	65
	Eastern equine encephalitis							
	Avian influenza (excluding H5N1 and H7N9)							
	Nipah virus infection							
	Japanese spotted fever						5	93
	Japanese encephalitis							
	Hantavirus pulmonary syndrome							
	Herpes B virus infection							
	Glanders							
	Brucellosis							2
	Venezuelan equine encephalitis							
	Hendra virus infection							
	Epidemic typhus							
Botulism					1		2	
Malaria	2	2			7		23	
Tularemia								
Lyme disease							1	
Lyssavirus infection(excluding rabies)								
Rift valley fever								
Melioidosis					1		1	
Legionellosis	2	8	6	6	57	75	868	
Leptospirosis					1		2	
Rocky mountain spotted fever								

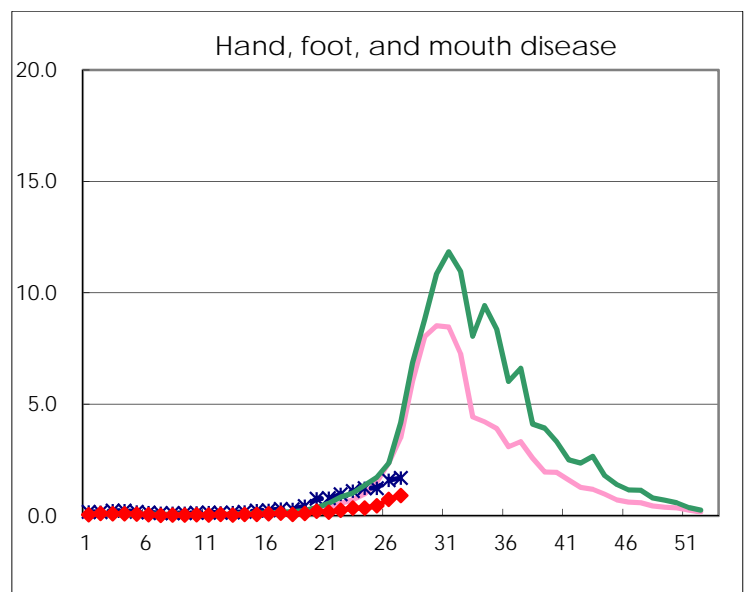
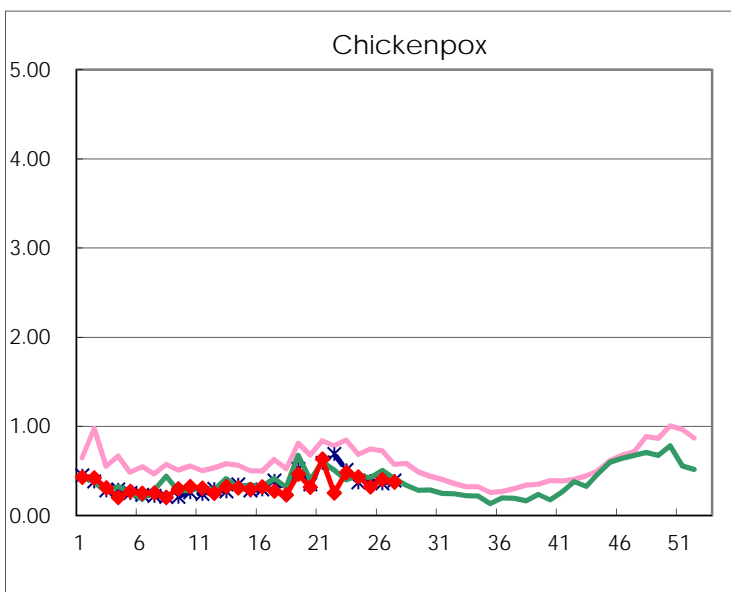
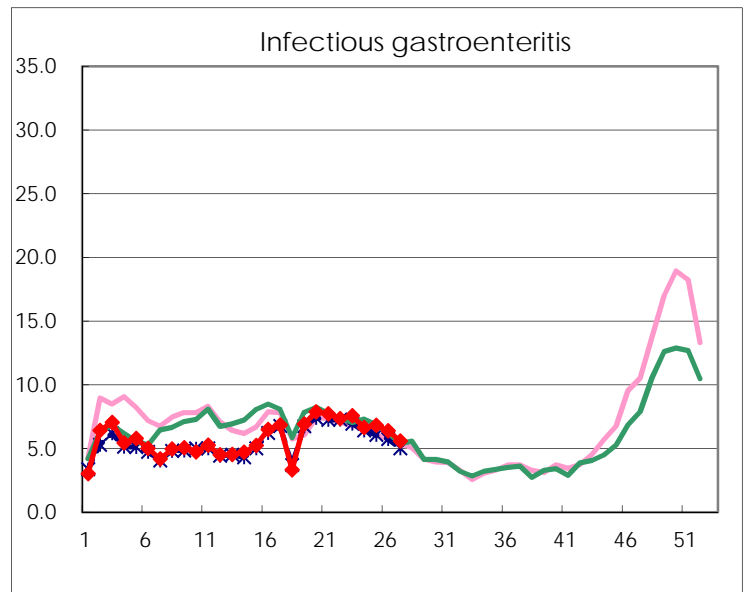
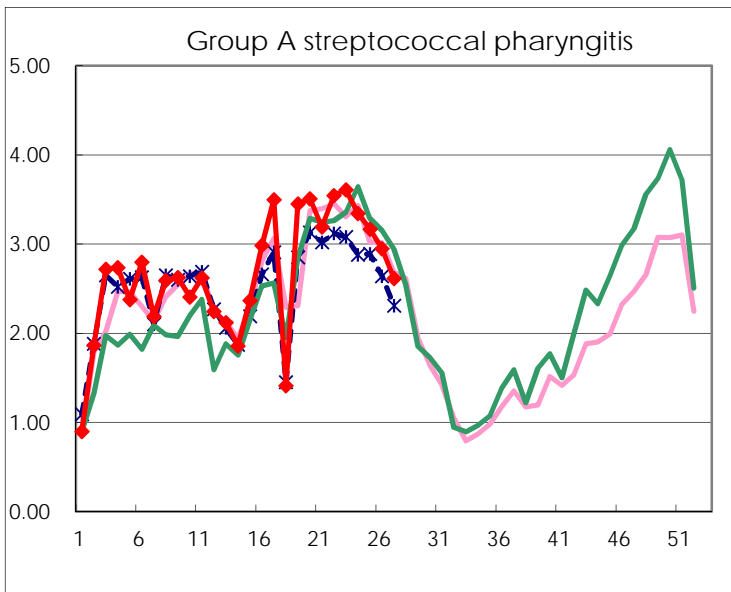
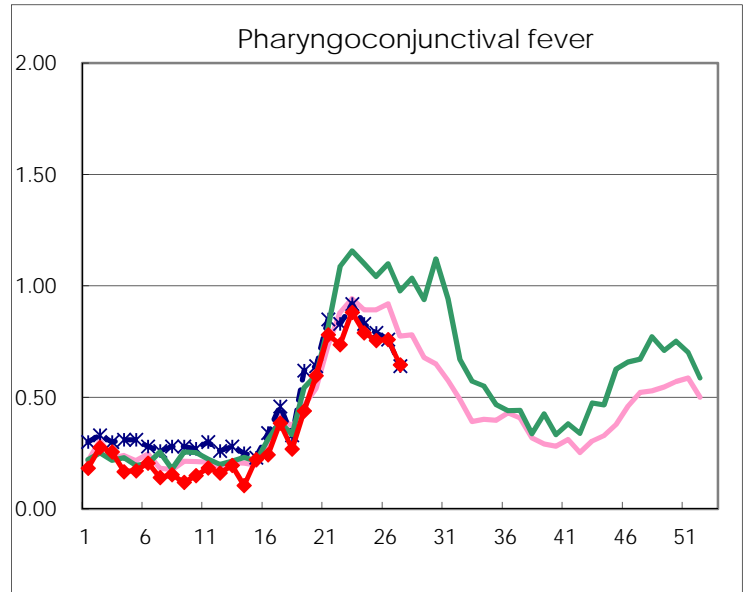
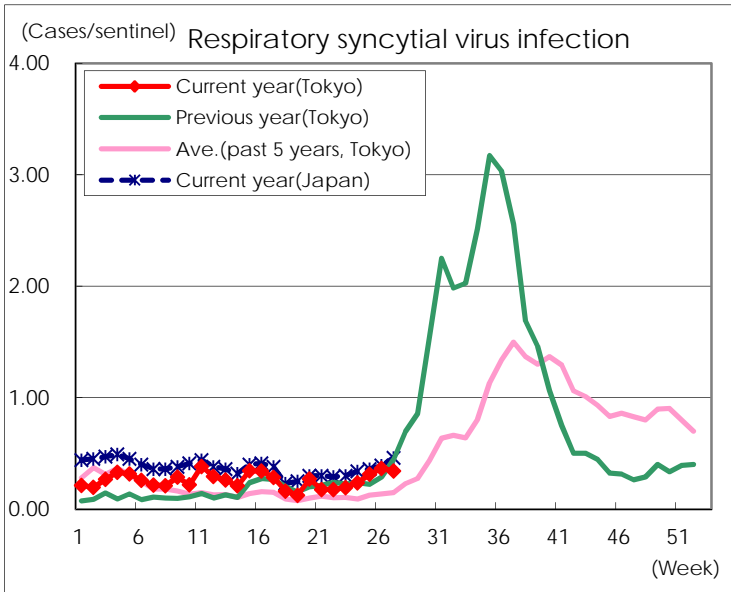
Category	Diseases	Tokyo					Japan	
		24th	25th	26th	27th	Cum 2018	27th	Cum 2018
V	Amebiasis	7	1	11	2	86	15	428
	Viral hepatitis(excluding hepatitis A and E)	1	1	1	2	24	8	111
	CRE infection	1	4	2	5	94	24	862
	Acute Flaccid Paralysis (excluding Acute poliomyelitis)					2	3	14
	Acute encephalitis(excluding JE and WNE)	1	1	1	1	38	10	390
	Cryptosporidiosis					2		10
	Creutzfeldt-Jakob disease		3		3	14	3	109
	Severe invasive streptococcal infections(TSLs)	1	2	2	2	57	12	404
	Acquired immunodeficiency syndrome (AIDS)	8	11	10	5	207	13	643
	Giardiasis		1			11		39
	Invasive <i>Haemophilus influenzae</i> disease	1		1	1	18	3	256
	Invasive meningococcal disease					5	1	22
	Invasive pneumococcal disease	6	6	4	4	242	20	2,037
	Varicella (limited to hospitalized case)	3	1		2	29	3	217
	Congenital rubella syndrome							
	Syphilis	33	43	35	39	885	106	3,409
	Disseminated cryptococcosis				1	11	3	93
	Tetanus					1	1	52
	Vancomycin-resistant <i>S. aureus</i> infection							
	Vancomycin-resistant <i>Enterococcus</i> infection	1				2	1	28
	Pertussis	32	37	33	47	340	136	3,023
Rubella	1	1	1	1	9	2	49	
Measles	1			1	14	10	185	
MDRA infection	1				3		9	

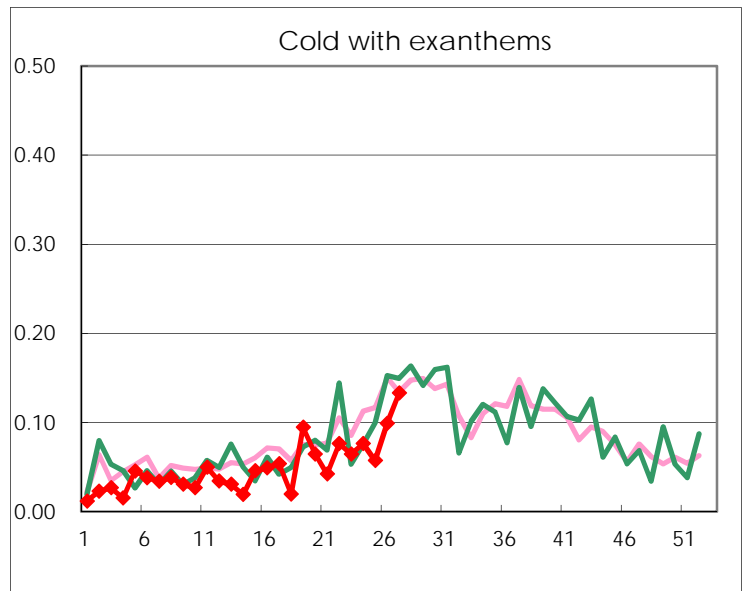
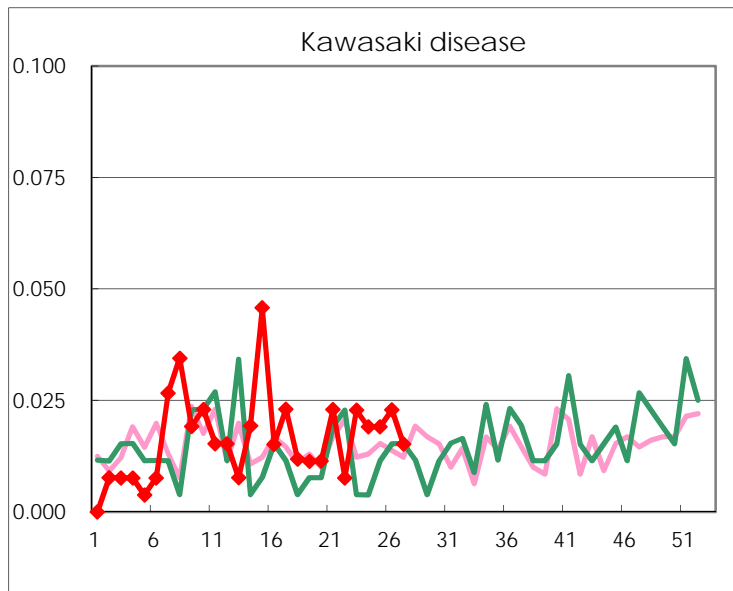
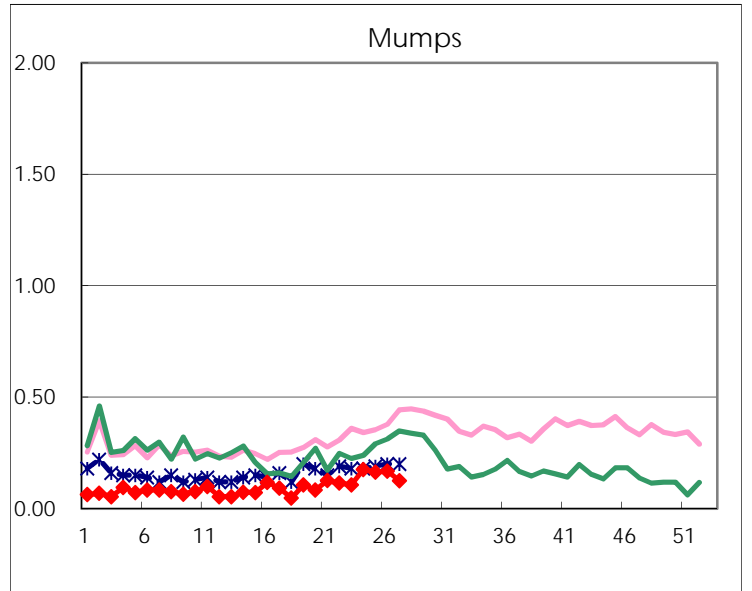
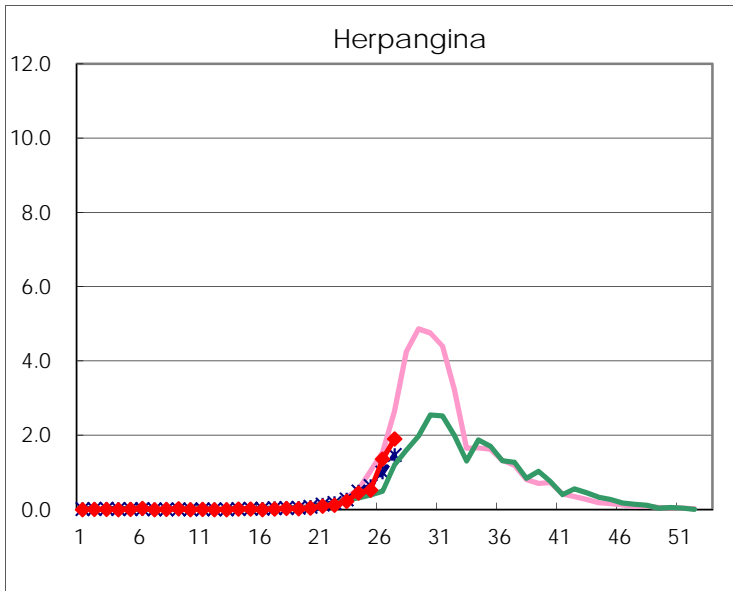
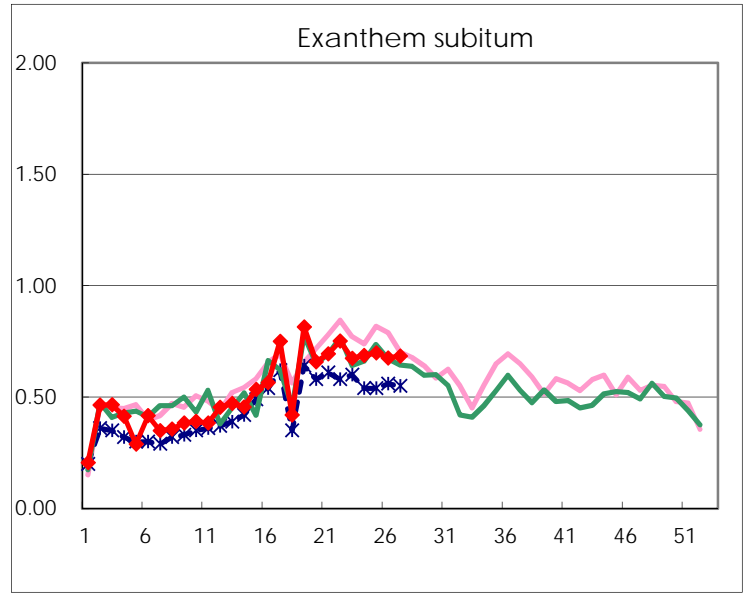
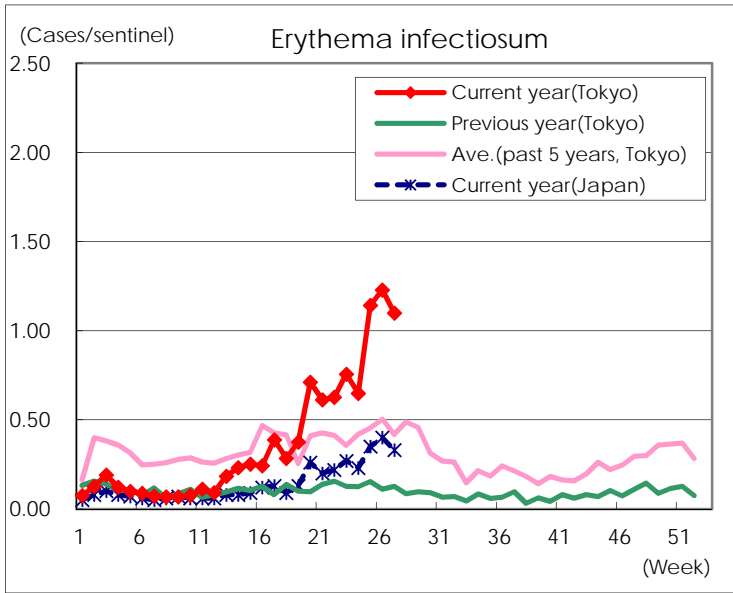
Number of patients with the diseases to be reported
by the designated clinics and hospitals

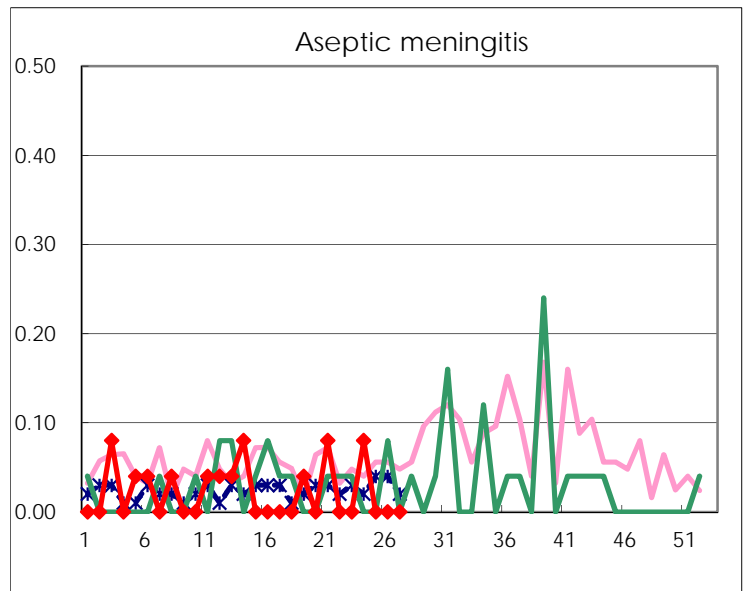
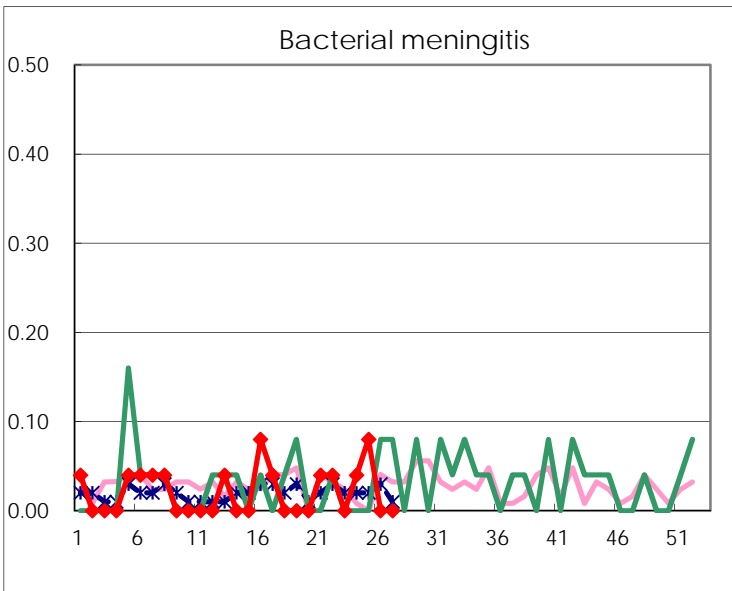
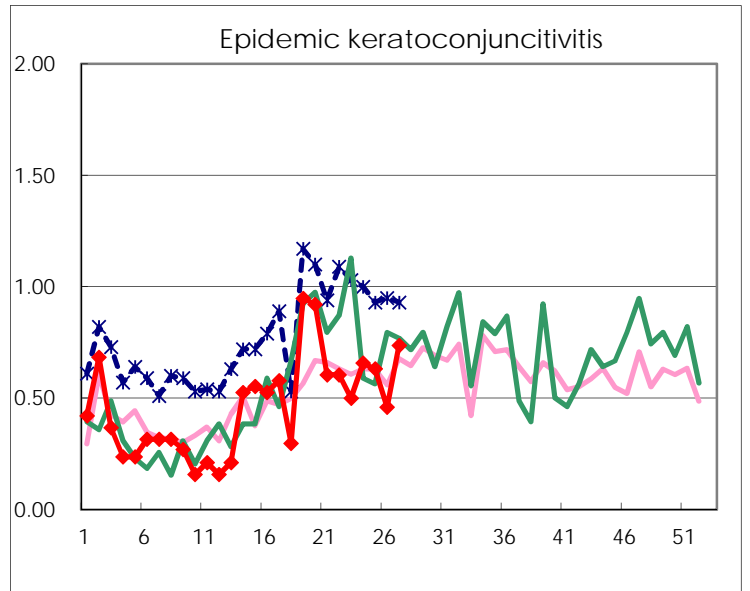
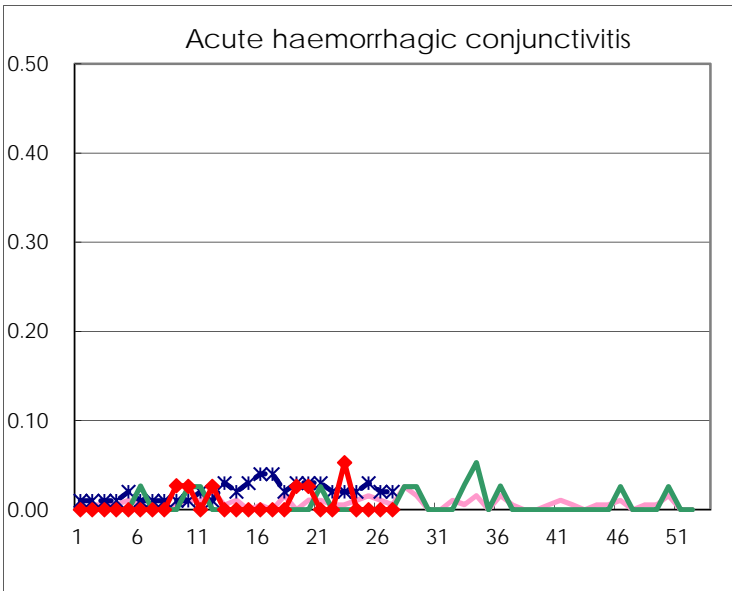
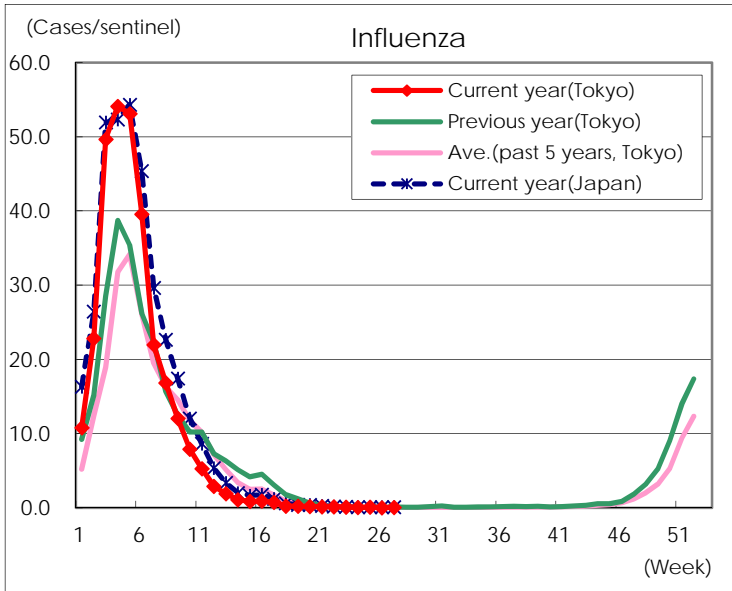
Diseases	Tokyo				
	24th	25th	26th	27th	/sentinel
Respiratory syncytial virus infection	62	82	96	90	0.34
Pharyngoconjunctival fever	207	198	199	170	0.65
Group A streptococcal pharyngitis	876	830	772	688	2.62
Infectious gastroenteritis	1,742	1,787	1,674	1,467	5.58
Chickenpox	113	84	105	98	0.37
Hand, foot, and mouth disease	90	117	192	240	0.91
Erythema infectiosum	170	299	322	289	1.10
Exanthem subitum	180	183	177	180	0.68
Herpangina	118	139	356	500	1.90
Mumps	46	43	44	33	0.13
Kawasaki disease	5	5	6	4	0.02
Cold with exanthems	20	15	26	35	0.13
Influenza	29	35	13	28	0.07
Acute hemorrhagic conjunctivitis					
Epidemic keratoconjunctivitis	25	24	17	28	0.74
Bacterial meningitis	1	2			
Aseptic meningitis	2				
<i>Mycoplasma pneumoniae</i>	1	2	1	8	0.32
Chlamydial pneumonia (excluding psittacosis)	1	1	2	1	0.04
Infectious gastroenteritis (only by Rotavirus)	2	1		1	0.04
Influenza-Associated Hospitalizations	2	1			

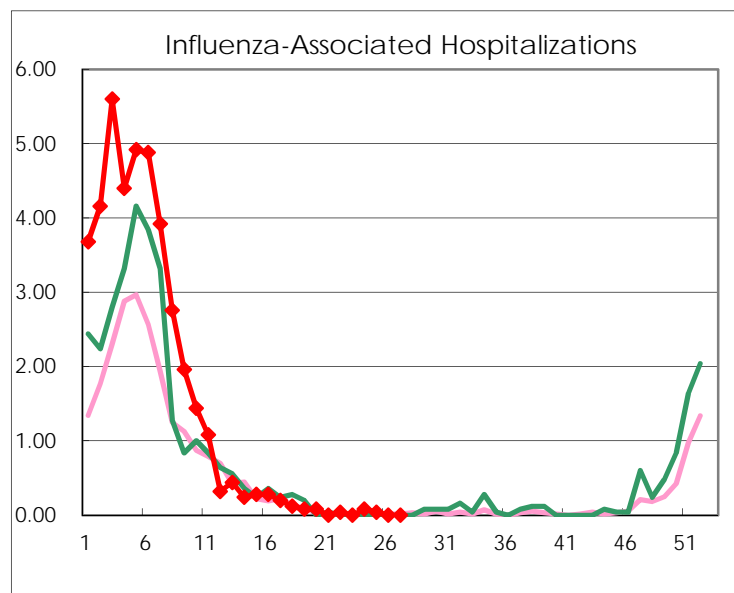
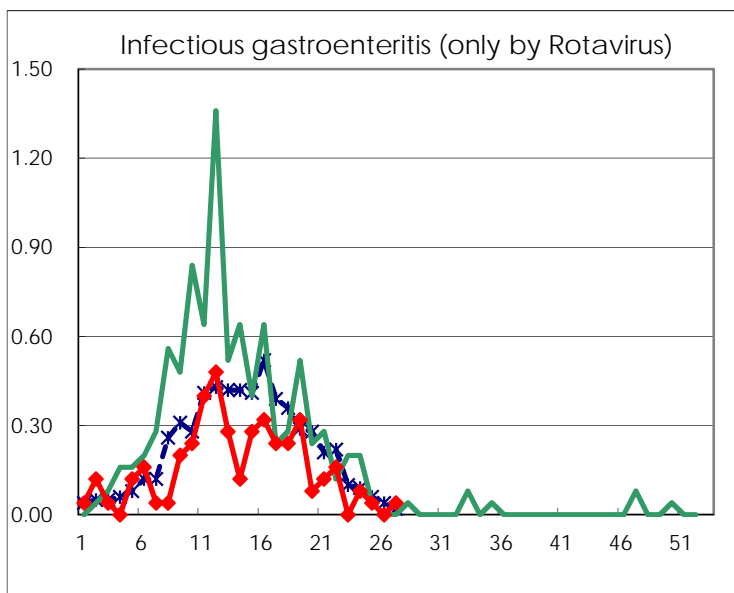
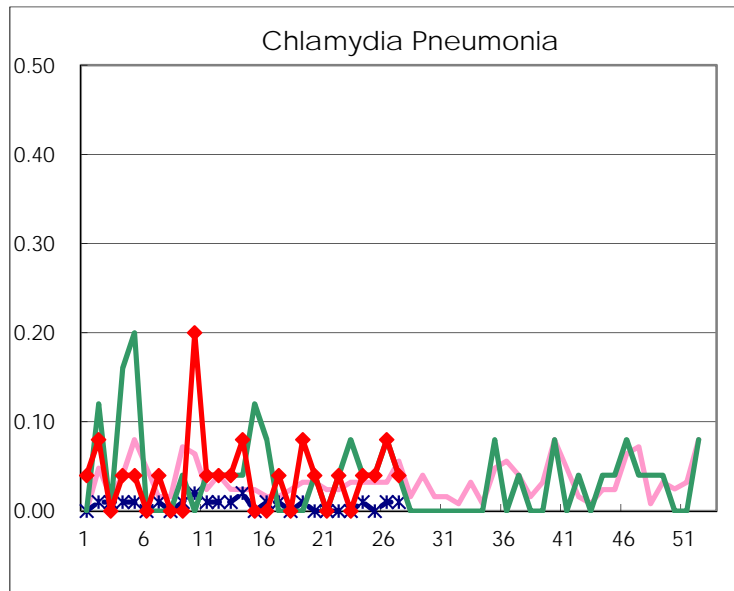
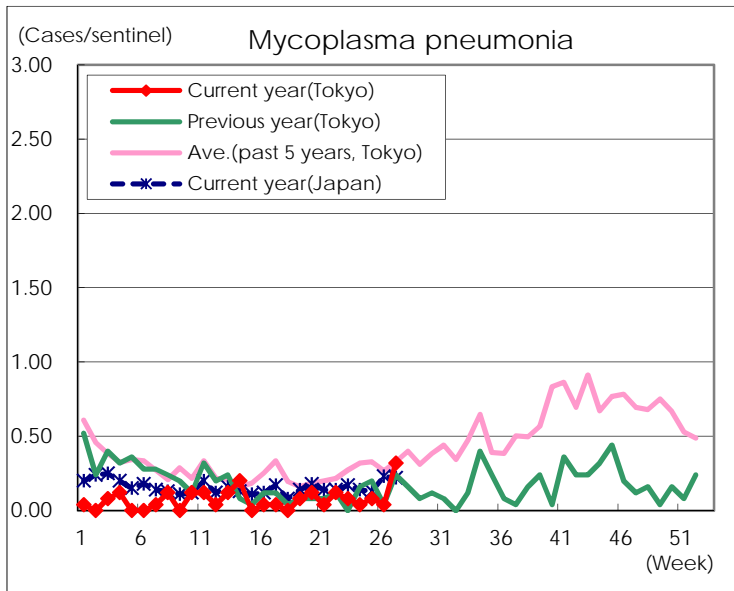
(Blank means 0.)

Disease Trend Graph (weekly reported cases per sentinel in comparison)









Number of sentinel facilities for weekly reporting		
Types of sentinels	Number of sentinels	Sentinels having reported
Pediatric	264	263
Influenza	419	417
Ophthalmic	39	38
Specially-designated	25	25