

19 July 2018 / Number 28

Surveillance System in Tokyo, Japan

The infectious diseases which all physicians must report

All physicians must report to health centers the incidence of the diseases which are shown at page one. Health centers electronically report the individual cases to Tokyo Metropolitan Infectious Disease Surveillance Center.

The infectious diseases required to be reported by the sentinels

The numbers of patients who visit the sentinel clinics or hospitals during a week are reported to health centers in Tokyo. And they electronically report the numbers to Tokyo Metropolitan Infectious Disease Surveillance Center. We have about 500 sentinel clinics and hospitals in Tokyo.

Tokyo Metropolitan Institute of Public Health

TEL:81-3-3363-3213 FAX:81-3-5332-7365

e-mail:www@tokyo-eiken.go.jp

URL:idsc.tokyo-eiken.go.jp/

Number of patients with the diseases which all physicians must report

Category	Diseases	Tokyo					Japan	
		25th	26th	27th	28th	Cum 2018	28th	Cum 2018
I	Ebola hemorrhagic fever							
	Crimean-Congo hemorrhagic fever							
	Smallpox							
	South American hemorrhagic fever							
	Plague							
	Marburg disease							
	Lassa fever							
II	Acute poliomyelitis							
	Tuberculosis	65	48	67	65	1,784	313	11,364
	Diphtheria							
	Severe Acute Respiratory Syndrome(SARS)							
	Middle East Respiratory Syndrome (MERS)							
	Avian influenza H5N1							
	Avian influenza H7N9							
III	Cholera							2
	Shigellosis	1	2	1		24	1	94
	Enterohemorrhagic Escherichia coli infection	9	10	13	21	138	91	1,173
	Typhoid fever					5		18
	Paratyphoid fever					6		11
IV	Hepatitis E	2		5	2	50	10	231
	West Nile fever							
	Hepatitis A	11	7	13	12	255	21	538
	Echinococcosis							7
	Yellow fever							
	Psittacosis				1	1	1	5
	Omsk hemorrhagic fever							
	Relapsing fever						1	2
	Kyasanur forest disease							
	Q fever							1
	Rabies							
	Coccidioidomycosis							1
	Monkeypox							
	Zika virus infection							
	Severe Fever with Thrombocytopenia Syndrome						2	41
	Hemorrhagic fever with renal syndrome							
	Western equine encephalitis							
	Tick-borne encephalitis							1
	Anthrax							
	Chikungunya fever							1
	Scrub typhus(Tsutsugamushi disease)					4	1	91
	Dengue fever	1	1	1	1	22	1	65
	Eastern equine encephalitis							
	Avian influenza (excluding H5N1 and H7N9)							
	Nipah virus infection							
	Japanese spotted fever						2	99
	Japanese encephalitis							
	Hantavirus pulmonary syndrome							
	Herpes B virus infection							
	Glanders							
	Brucellosis							2
	Venezuelan equine encephalitis							
	Hendra virus infection							
Epidemic typhus								
Botulism					1		2	
Malaria	2				7		23	
Tularemia								
Lyme disease							1	
Lyssavirus infection(excluding rabies)								
Rift valley fever								
Melioidosis					1		1	
Legionellosis	8	6	6	4	61	54	930	
Leptospirosis					1		2	
Rocky mountain spotted fever								

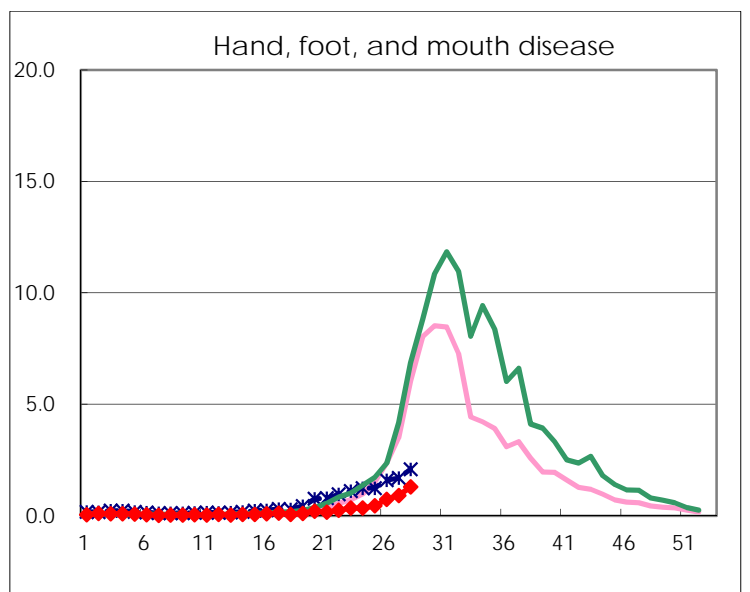
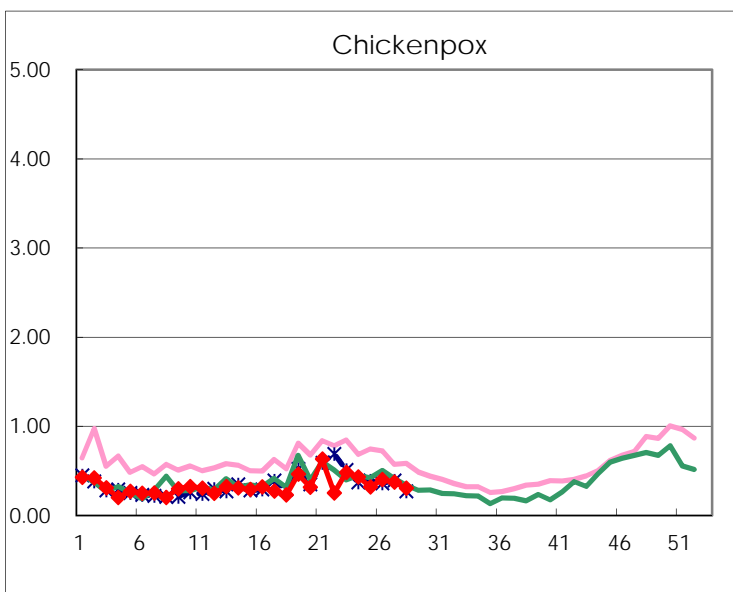
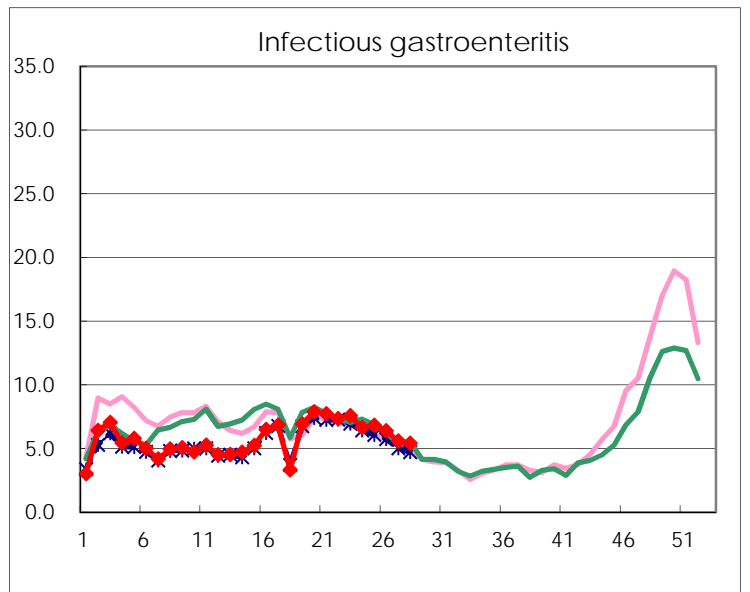
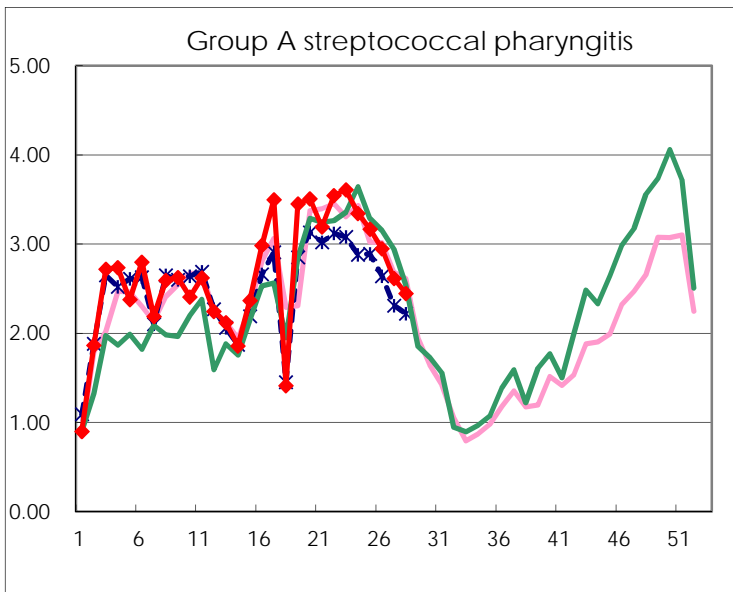
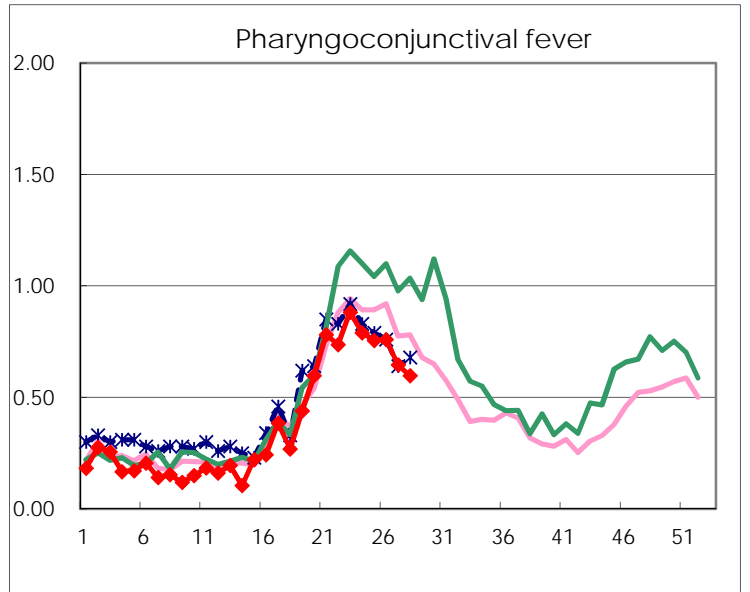
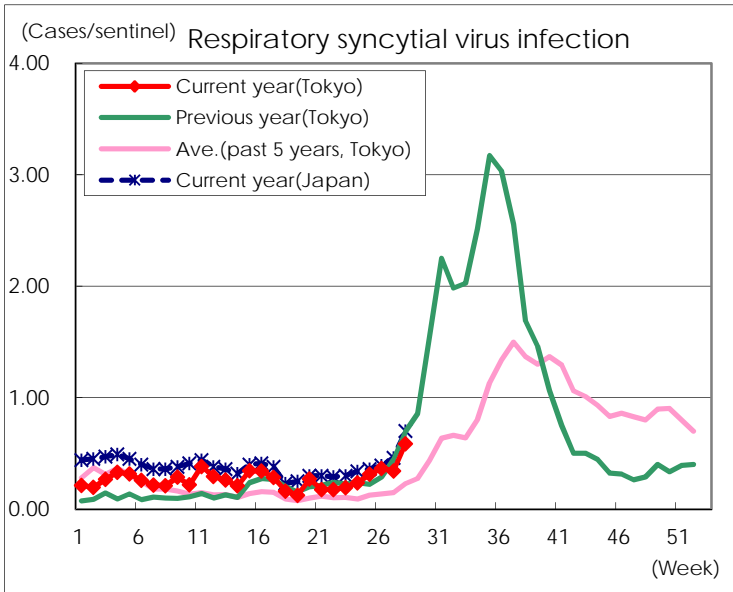
Category	Diseases	Tokyo					Japan	
		25th	26th	27th	28th	Cum 2018	28th	Cum 2018
V	Amebiasis	1	11	3	3	90	10	447
	Viral hepatitis(excluding hepatitis A and E)	1	1	2		24	2	114
	CRE infection	4	2	5	2	96	20	893
	Acute Flaccid Paralysis (excluding Acute poliomyelitis)					2		15
	Acute encephalitis(excluding JE and WNE)	1	1	1		38	4	398
	Cryptosporidiosis					2		10
	Creutzfeldt-Jakob disease	3		3		14	2	112
	Severe invasive streptococcal infections(TSLs)	2	2	2	1	58	7	413
	Acquired immunodeficiency syndrome (AIDS)	11	10	5	5	212	17	676
	Giardiasis	1				11		40
	Invasive <i>Haemophilus influenzae</i> disease		1	1		18	2	264
	Invasive meningococcal disease					5	1	23
	Invasive pneumococcal disease	6	4	4	3	245	18	2,066
	Varicella (limited to hospitalized case)	1		2	1	30	4	222
	Congenital rubella syndrome							
	Syphilis	43	35	39	41	926	87	3,537
	Disseminated cryptococcosis			1		11		94
	Tetanus					1	2	54
	Vancomycin-resistant <i>S. aureus</i> infection							
	Vancomycin-resistant <i>Enterococcus</i> infection					2	2	29
	Pertussis	37	33	49	64	406	141	3,234
Rubella	1	1	1		9	3	53	
Measles			1		14	1	195	
MDRA infection					3		9	

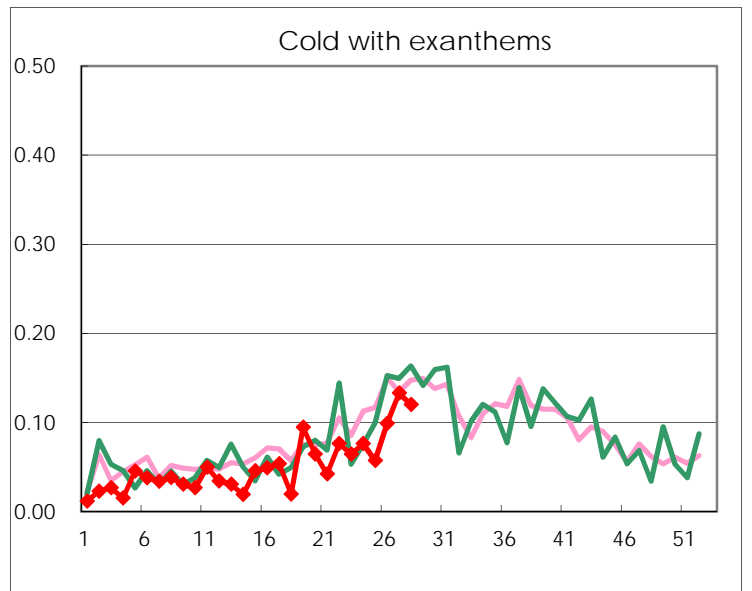
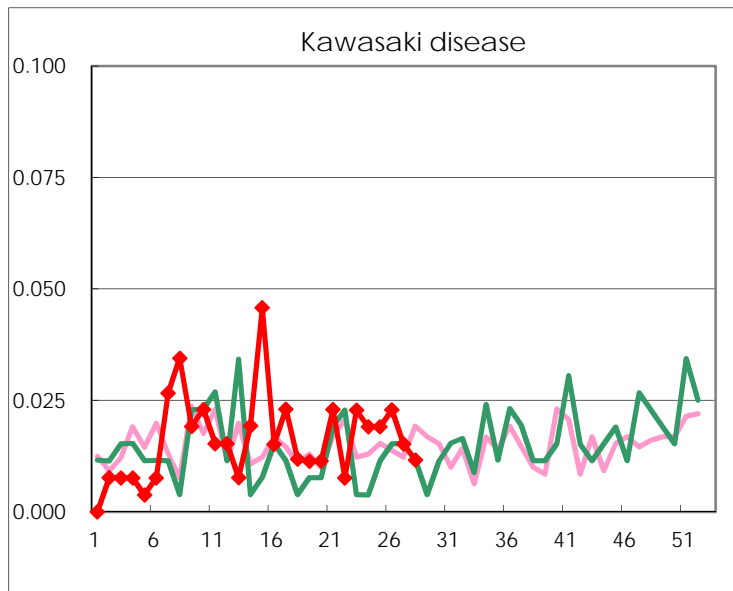
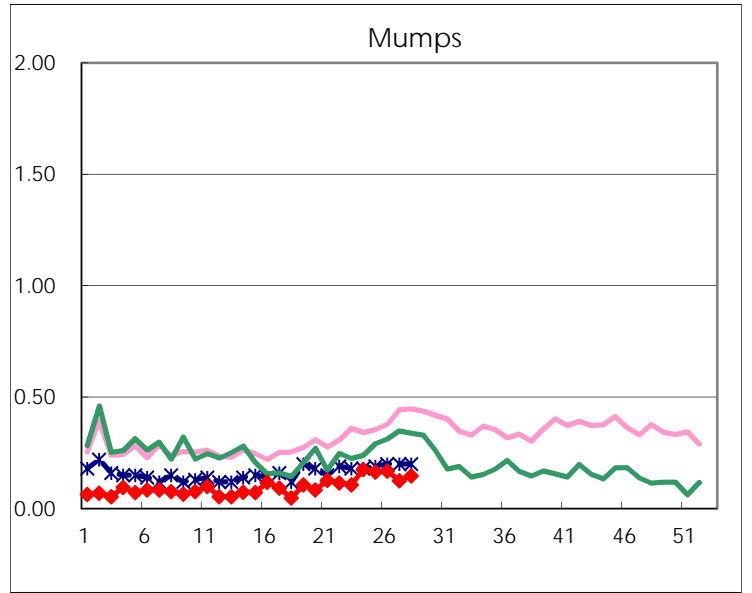
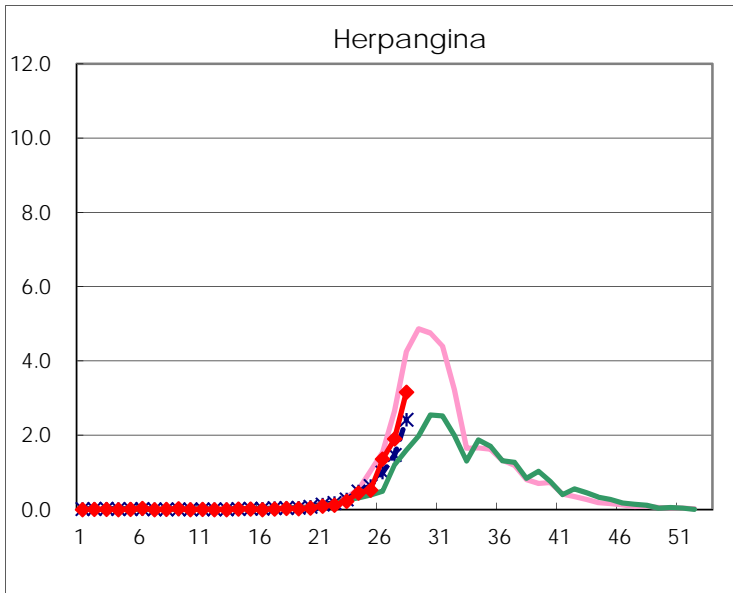
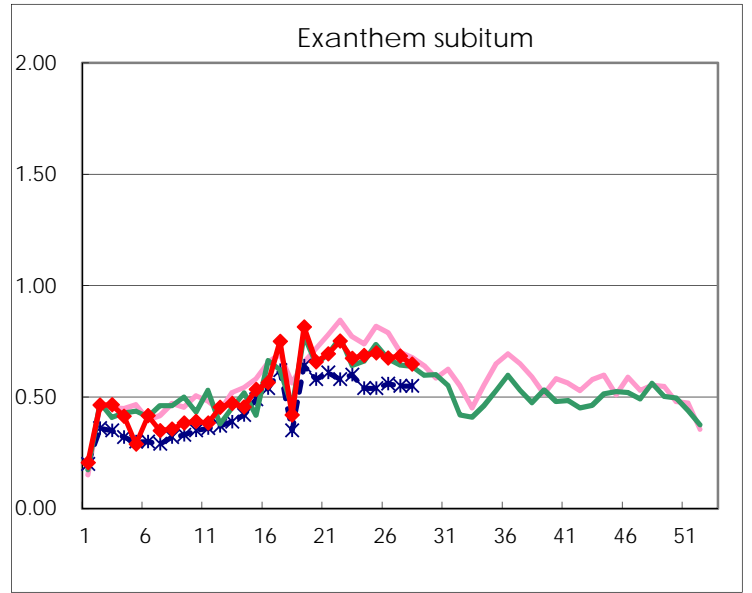
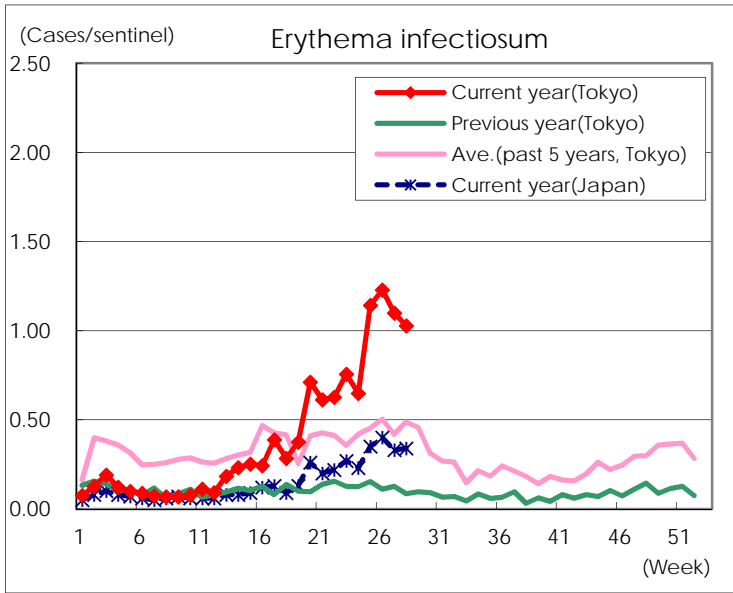
Number of patients with the diseases to be reported
by the designated clinics and hospitals

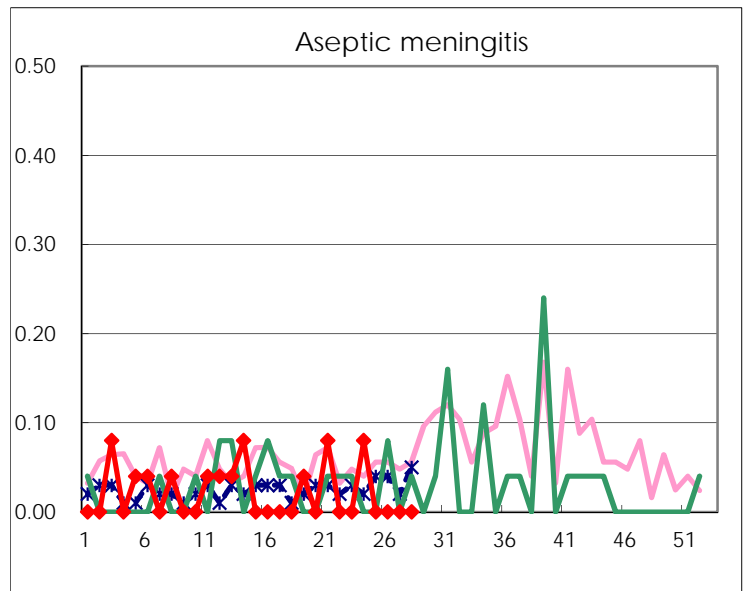
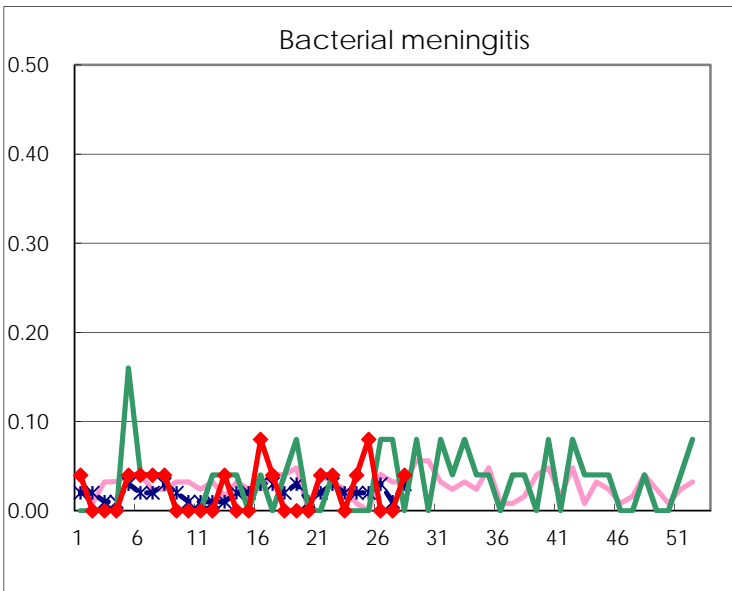
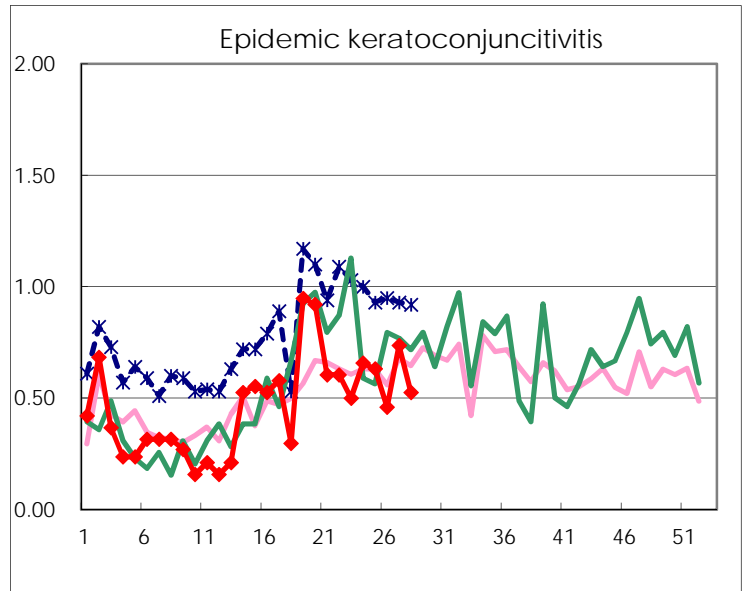
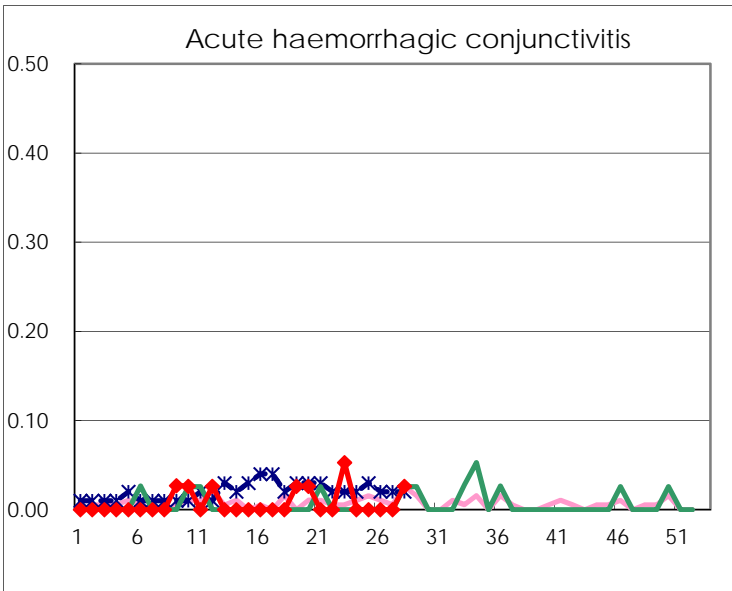
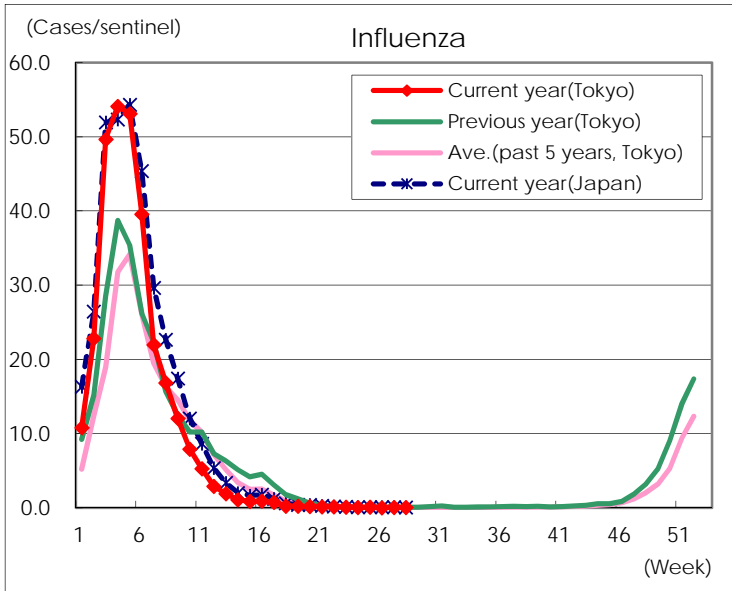
Diseases	Tokyo				
	25th	26th	27th	28th	/sentinel
Respiratory syncytial virus infection	82	96	90	151	0.59
Pharyngoconjunctival fever	198	199	170	154	0.60
Group A streptococcal pharyngitis	830	772	688	631	2.45
Infectious gastroenteritis	1,787	1,674	1,467	1,396	5.41
Chickenpox	84	105	98	79	0.31
Hand, foot, and mouth disease	117	192	240	333	1.29
Erythema infectiosum	299	322	289	265	1.03
Exanthem subitum	183	177	180	167	0.65
Herpangina	139	356	500	817	3.17
Mumps	43	44	33	38	0.15
Kawasaki disease	5	6	4	3	0.01
Cold with exanthems	15	26	35	31	0.12
Influenza	35	13	28	22	0.05
Acute hemorrhagic conjunctivitis				1	0.03
Epidemic keratoconjunctivitis	24	17	28	20	0.53
Bacterial meningitis	2			1	0.04
Aseptic meningitis					
<i>Mycoplasma pneumoniae</i>	2	1	8	4	0.16
Chlamydial pneumonia (excluding psittacosis)	1	2	1		
Infectious gastroenteritis (only by Rotavirus)	1		1		
Influenza-Associated Hospitalizations	1				

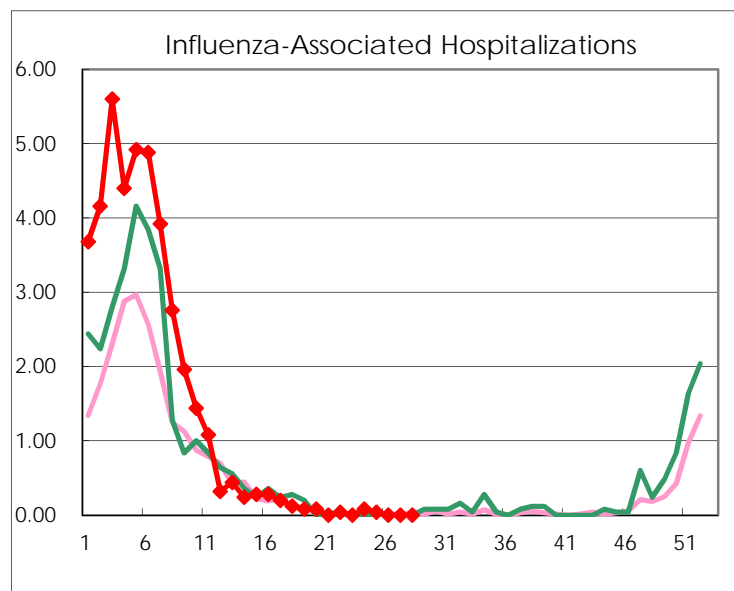
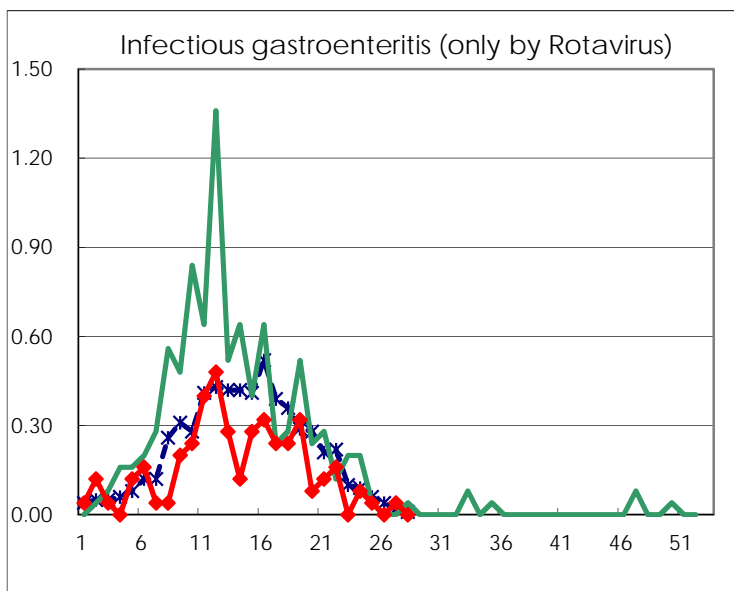
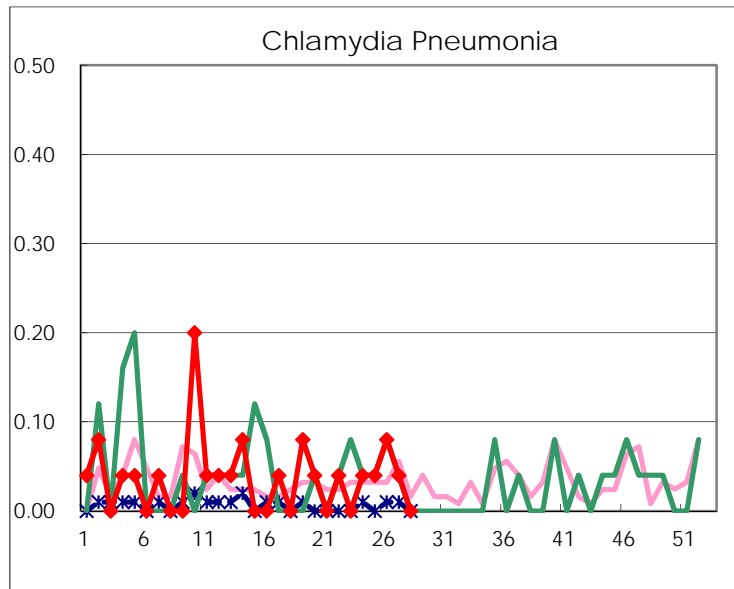
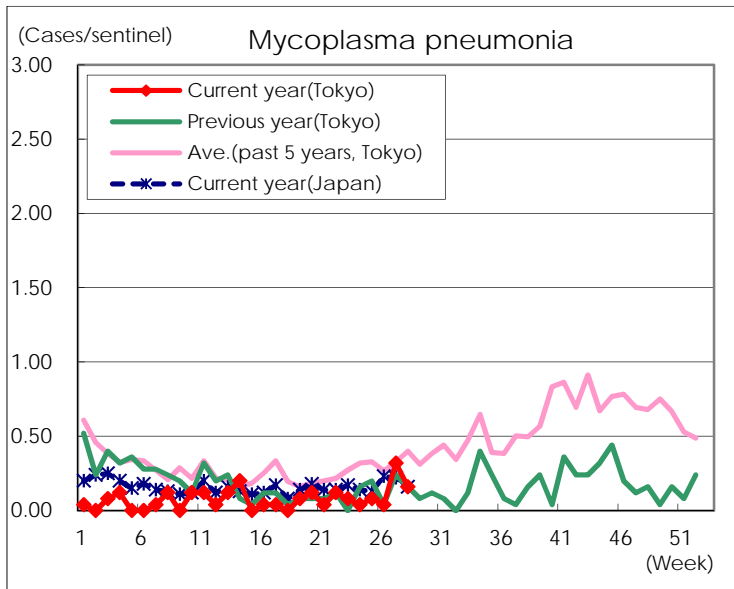
(Blank means 0.)

Disease Trend Graph (weekly reported cases per sentinel in comparison)









Number of sentinel facilities for weekly reporting		
Types of sentinels	Number of sentinels	Sentinels having reported
Pediatric	264	258
Influenza	419	408
Ophthalmic	39	38
Specially-designated	25	25