

26 July 2018 / Number 29

Surveillance System in Tokyo, Japan

The infectious diseases which all physicians must report

All physicians must report to health centers the incidence of the diseases which are shown at page one. Health centers electronically report the individual cases to Tokyo Metropolitan Infectious Disease Surveillance Center.

The infectious diseases required to be reported by the sentinels

The numbers of patients who visit the sentinel clinics or hospitals during a week are reported to health centers in Tokyo. And they electronically report the numbers to Tokyo Metropolitan Infectious Disease Surveillance Center. We have about 500 sentinel clinics and hospitals in Tokyo.

Tokyo Metropolitan Institute of Public Health

TEL:81-3-3363-3213 FAX:81-3-5332-7365

e-mail:www@tokyo-eiken.go.jp

URL:idsc.tokyo-eiken.go.jp/

Number of patients with the diseases which all physicians must report

Category	Diseases	Tokyo					Japan	
		26th	27th	28th	29th	Cum 2018	29th	Cum 2018
I	Ebola hemorrhagic fever							
	Crimean-Congo hemorrhagic fever							
	Smallpox							
	South American hemorrhagic fever							
	Plague							
	Marburg disease							
	Lassa fever							
II	Acute poliomyelitis							
	Tuberculosis	50	68	65	57	1,843	305	11,728
	Diphtheria							
	Severe Acute Respiratory Syndrome(SARS)							
	Middle East Respiratory Syndrome (MERS)							
	Avian influenza H5N1							
	Avian influenza H7N9							
III	Cholera							2
	Shigellosis	2	1		1	25		96
	Enterohemorrhagic Escherichia coli infection	10	13	21	8	146	126	1,317
	Typhoid fever					5		18
	Paratyphoid fever					6	1	12
IV	Hepatitis E		5	2	1	51	7	241
	West Nile fever							
	Hepatitis A	7	13	12	20	275	18	568
	Echinococcosis							7
	Yellow fever							
	Psittacosis			1		1		5
	Omsk hemorrhagic fever							
	Relapsing fever							2
	Kyasanur forest disease							
	Q fever							1
	Rabies							
	Coccidioidomycosis						1	2
	Monkeypox							
	Zika virus infection							
	Severe Fever with Thrombocytopenia Syndrome						4	48
	Hemorrhagic fever with renal syndrome							
	Western equine encephalitis							
	Tick-borne encephalitis							1
	Anthrax							
	Chikungunya fever							1
	Scrub typhus(Tsutsugamushi disease)					4	1	93
	Dengue fever	1	1	1	1	23	3	71
	Eastern equine encephalitis							
	Avian influenza (excluding H5N1 and H7N9)							
	Nipah virus infection							
	Japanese spotted fever						5	107
	Japanese encephalitis							
	Hantavirus pulmonary syndrome							
	Herpes B virus infection							
	Glanders							
	Brucellosis							2
	Venezuelan equine encephalitis							
	Hendra virus infection							
	Epidemic typhus							
Botulism					1		1	
Malaria					7		23	
Tularemia								
Lyme disease						1	2	
Lyssavirus infection(excluding rabies)								
Rift valley fever								
Melioidosis					1		1	
Legionellosis	6	6	4	2	63	90	1,040	
Leptospirosis					1		2	
Rocky mountain spotted fever								

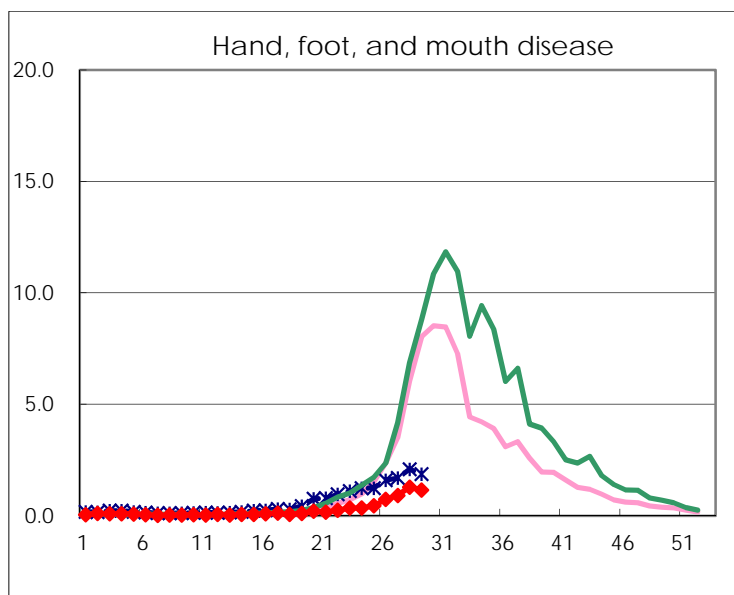
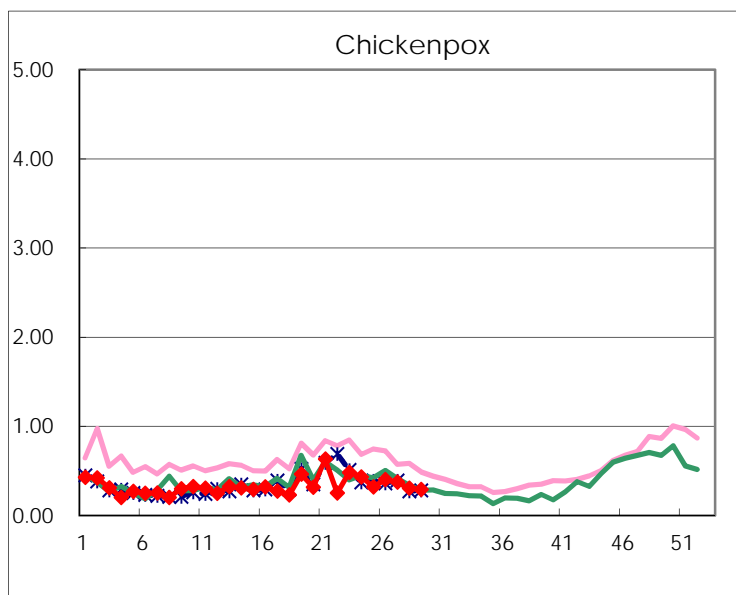
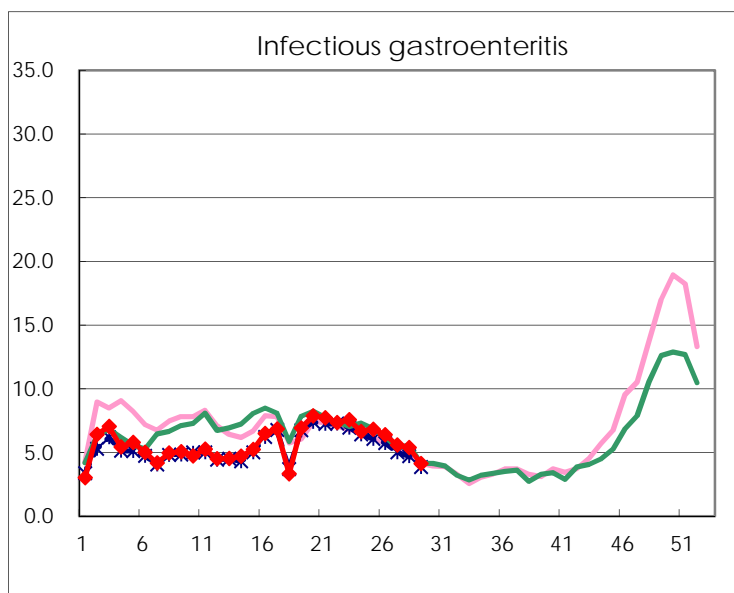
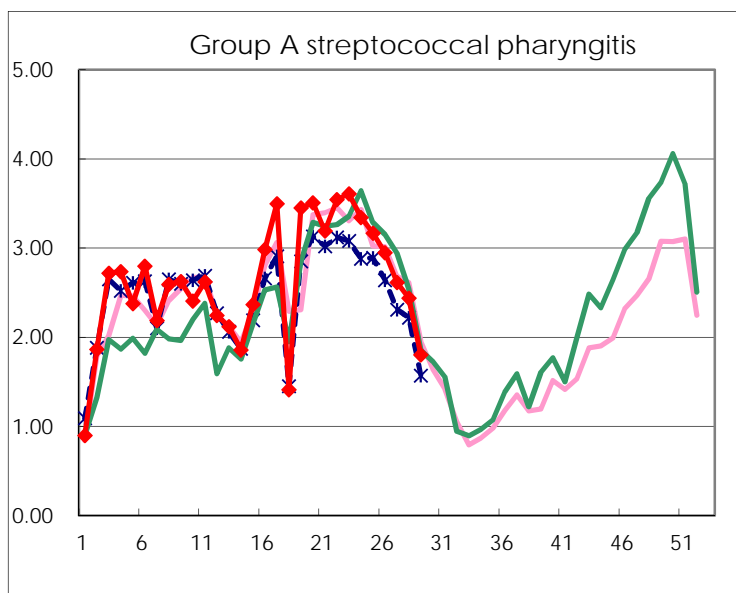
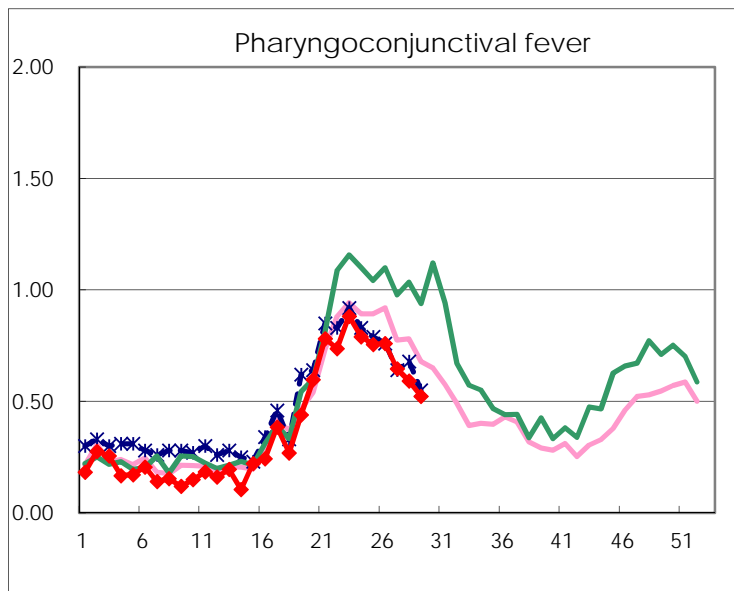
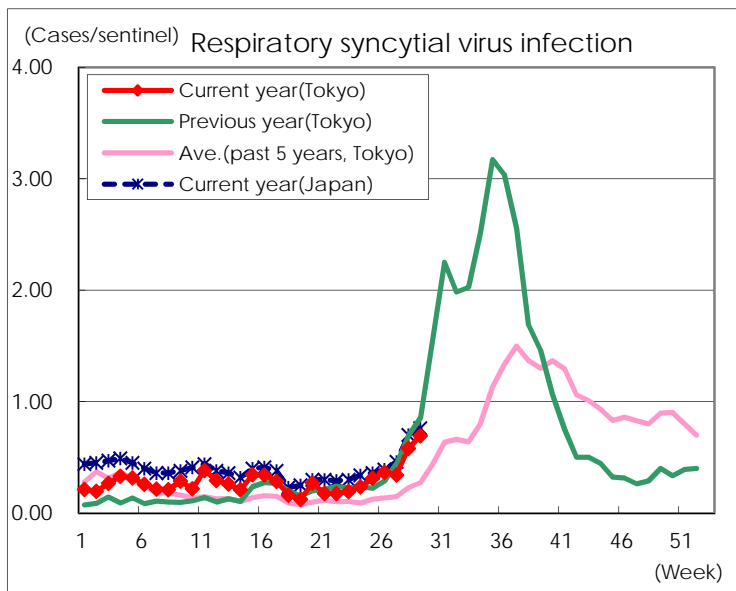
Category	Diseases	Tokyo					Japan	
		26th	27th	28th	29th	Cum 2018	29th	Cum 2018
V	Amebiasis	11	3	3	2	92	10	465
	Viral hepatitis(excluding hepatitis A and E)	1	2		2	26	7	126
	CRE infection	2	6	2	3	100	31	946
	Acute Flaccid Paralysis (excluding Acute poliomyelitis)					2		16
	Acute encephalitis(excluding JE and WNE)	1	1		2	40	11	415
	Cryptosporidiosis				1	3		11
	Creutzfeldt-Jakob disease		3			14	2	117
	Severe invasive streptococcal infections(TSLs)	2	2	1	1	59	4	421
	Acquired immunodeficiency syndrome (AIDS)	10	5	6	5	218	6	691
	Giardiasis					11		40
	Invasive <i>Haemophilus influenzae</i> disease	1	1			18	7	277
	Invasive meningococcal disease				1	6	2	25
	Invasive pneumococcal disease	4	4	3	4	249	18	2,103
	Varicella (limited to hospitalized case)		2	2		31	4	233
	Congenital rubella syndrome							
	Syphilis	35	39	42	38	965	70	3,686
	Disseminated cryptococcosis		1		1	12	3	99
	Tetanus					1	3	57
	Vancomycin-resistant <i>S. aureus</i> infection							
	Vancomycin-resistant <i>Enterococcus</i> infection				1	3	1	31
	Pertussis	33	49	66	89	498	135	3,542
Rubella	1	1		2	11	4	58	
Measles		1			14	1	197	
MDRA infection					3		9	

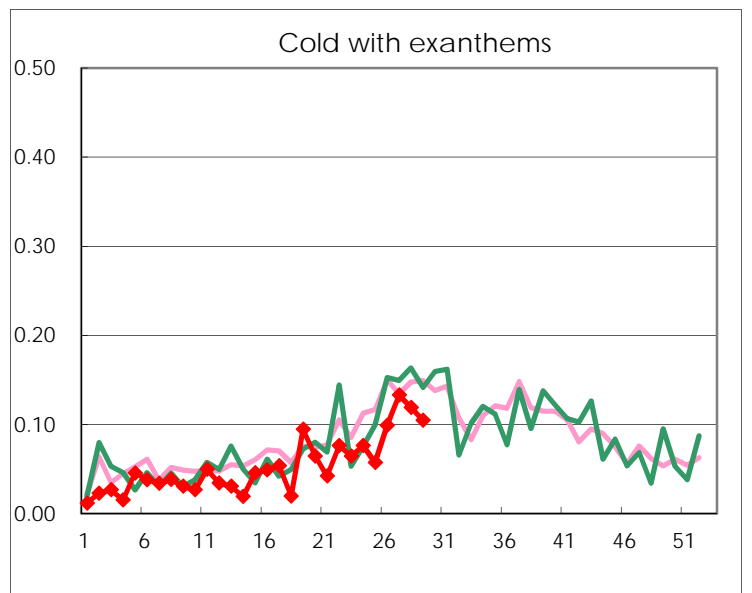
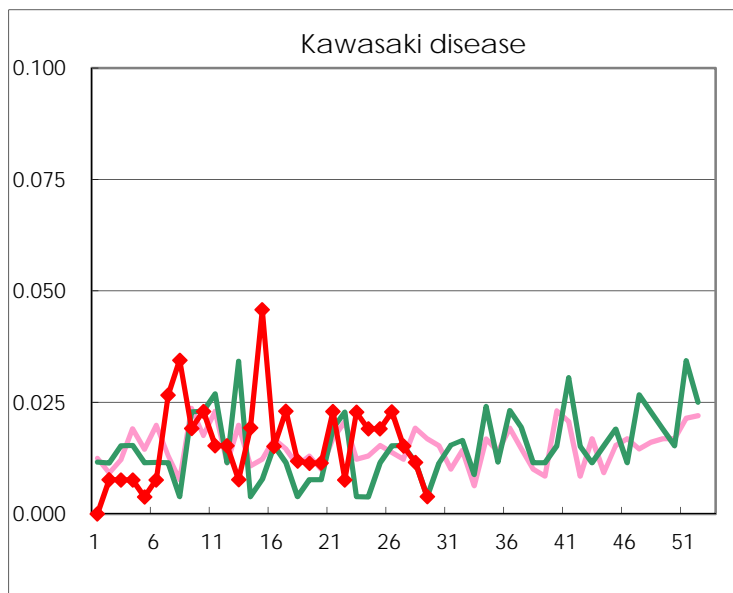
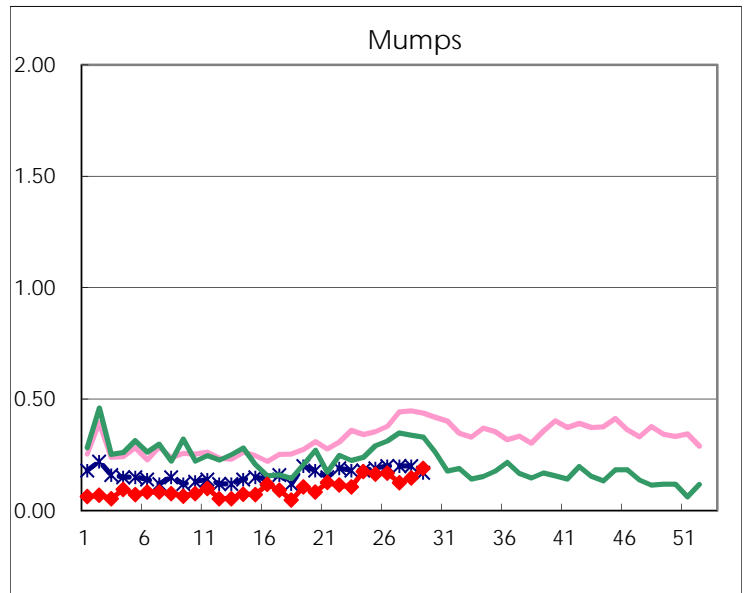
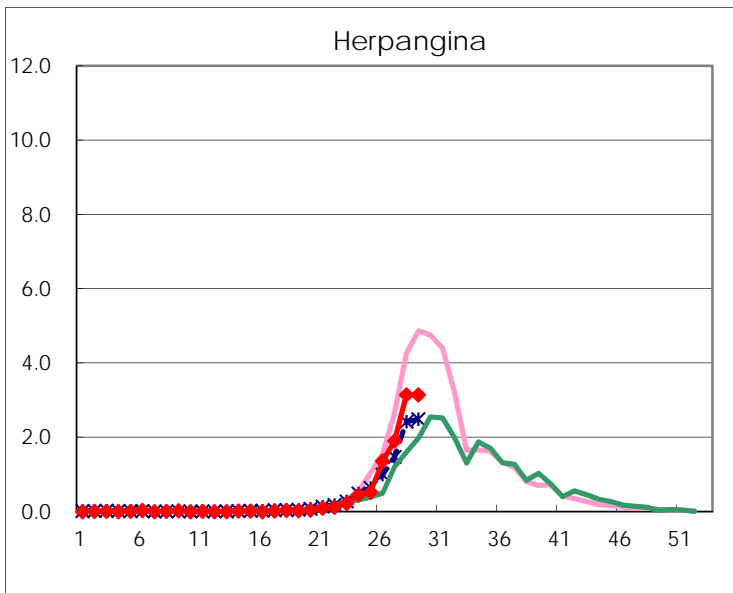
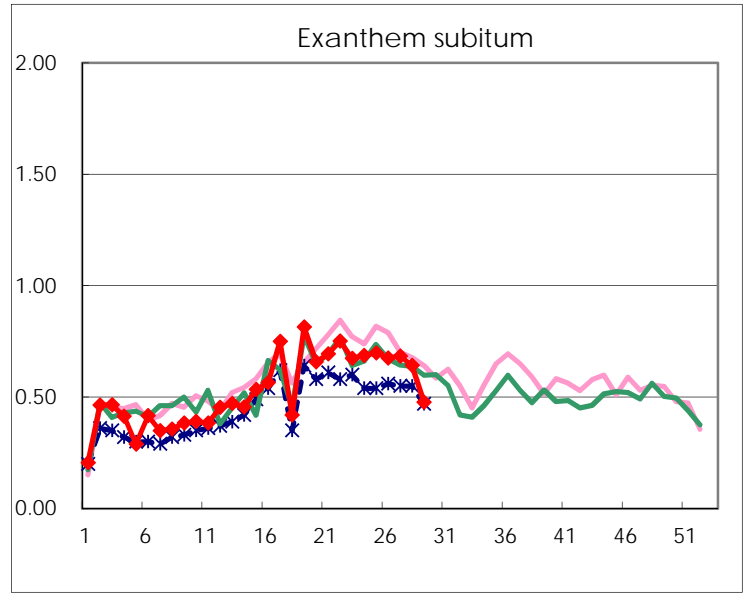
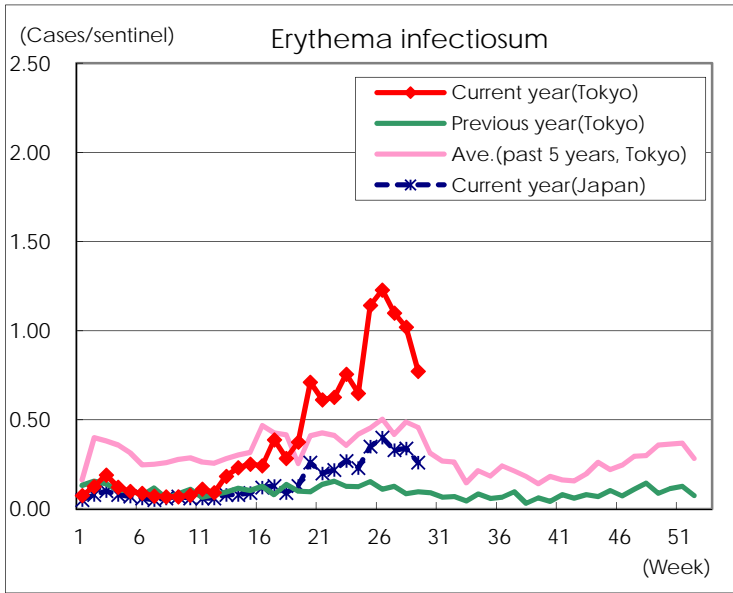
Number of patients with the diseases to be reported
by the designated clinics and hospitals

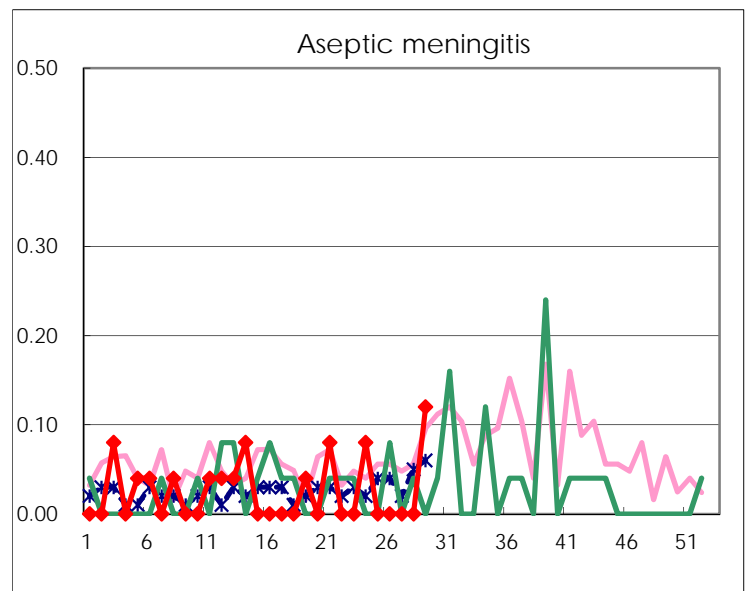
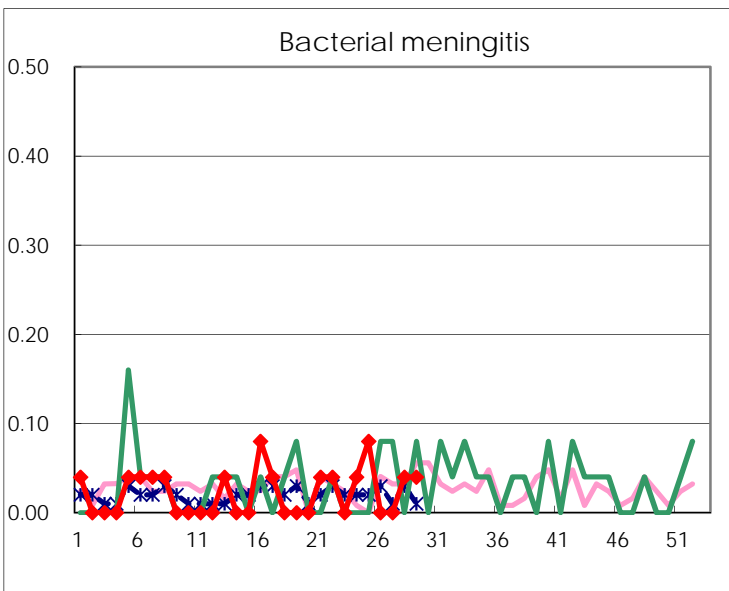
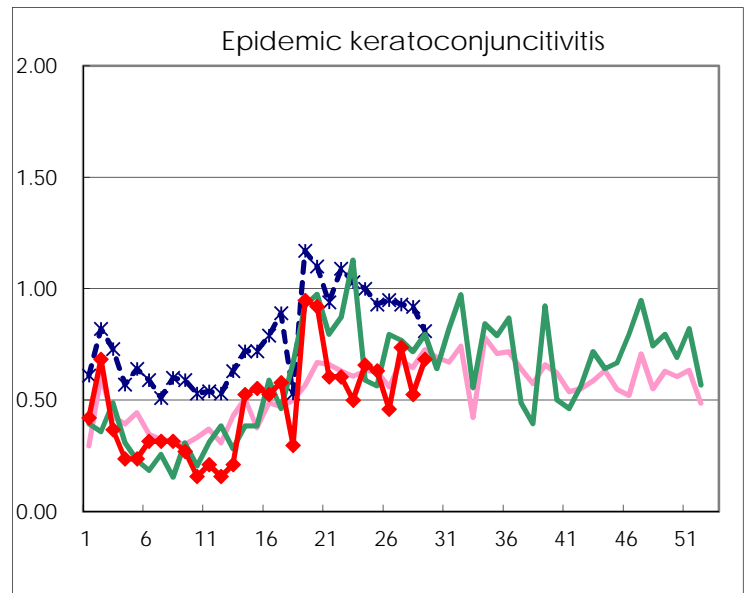
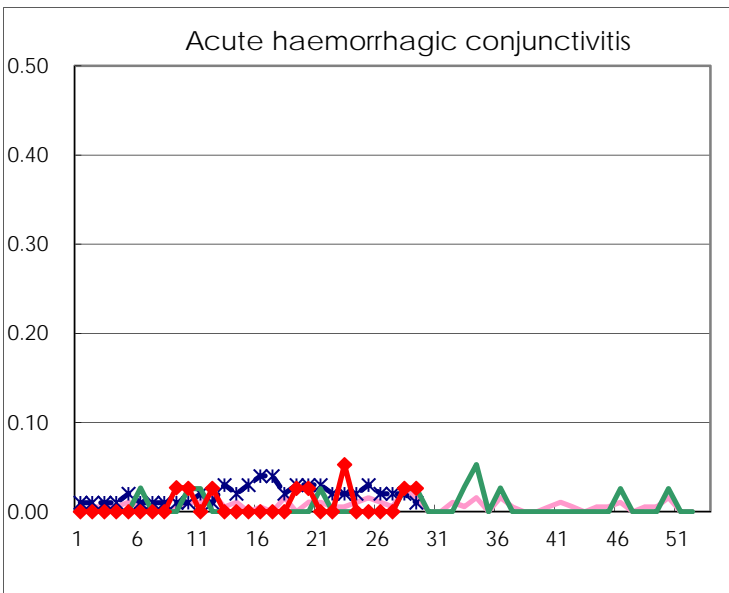
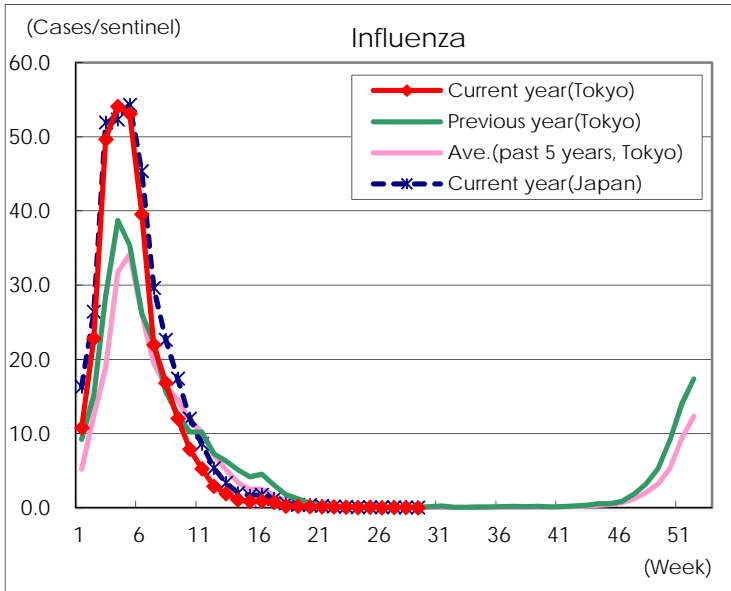
Diseases	Tokyo				
	26th	27th	28th	29th	/sentinel
Respiratory syncytial virus infection	96	90	151	179	0.69
Pharyngoconjunctival fever	199	170	154	135	0.52
Group A streptococcal pharyngitis	772	688	634	465	1.80
Infectious gastroenteritis	1,674	1,467	1,401	1,063	4.12
Chickenpox	105	98	79	75	0.29
Hand, foot, and mouth disease	192	240	334	297	1.15
Erythema infectiosum	322	289	265	199	0.77
Exanthem subitum	177	180	167	123	0.48
Herpangina	356	500	817	811	3.14
Mumps	44	33	38	49	0.19
Kawasaki disease	6	4	3	1	
Cold with exanthems	26	35	31	27	0.10
Influenza	13	28	22	6	0.01
Acute hemorrhagic conjunctivitis			1	1	0.03
Epidemic keratoconjunctivitis	17	28	20	26	0.68
Bacterial meningitis			1	1	0.04
Aseptic meningitis				3	0.12
<i>Mycoplasma pneumoniae</i>	1	8	4		
Chlamydial pneumonia (excluding psittacosis)	2	1			
Infectious gastroenteritis (only by Rotavirus)		1		1	0.04
Influenza-Associated Hospitalizations					

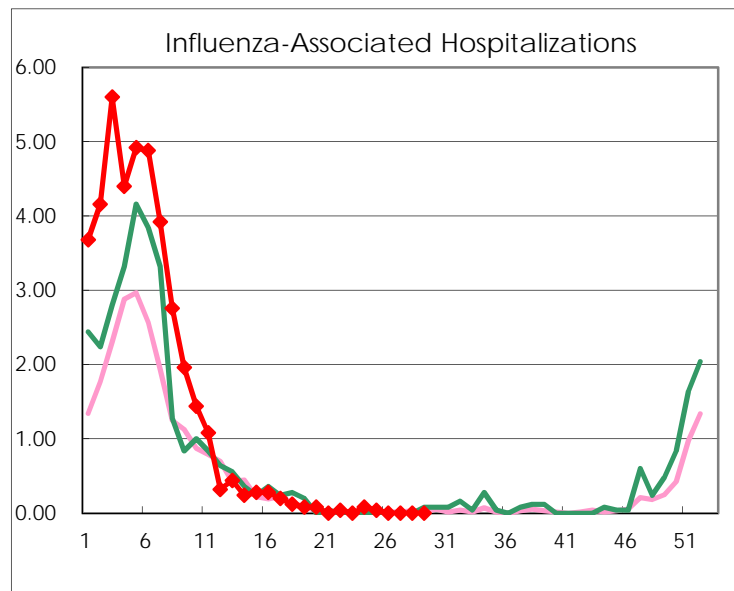
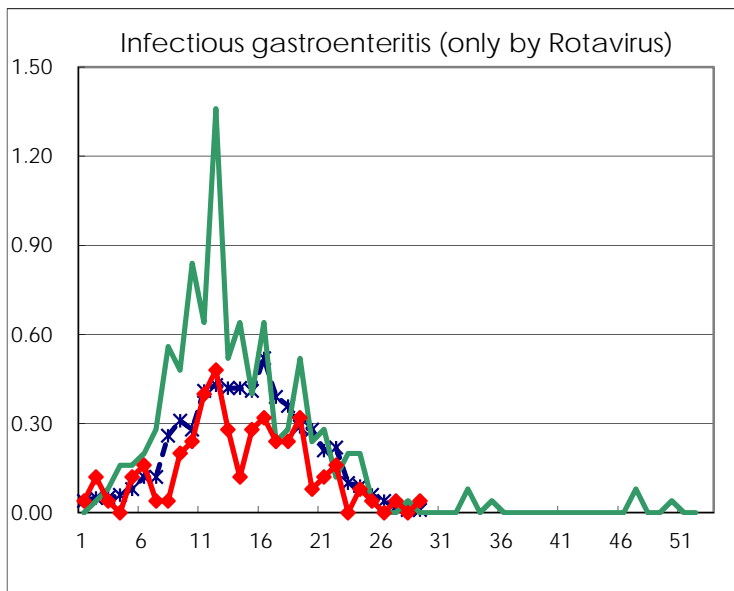
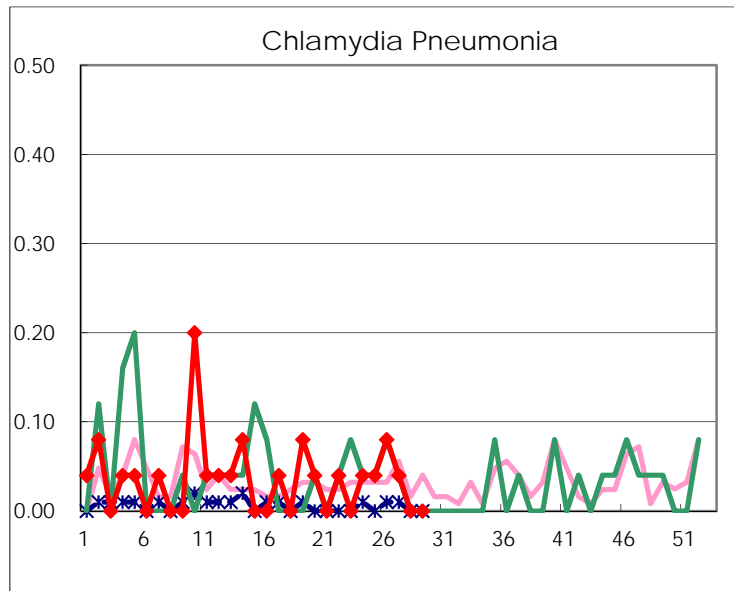
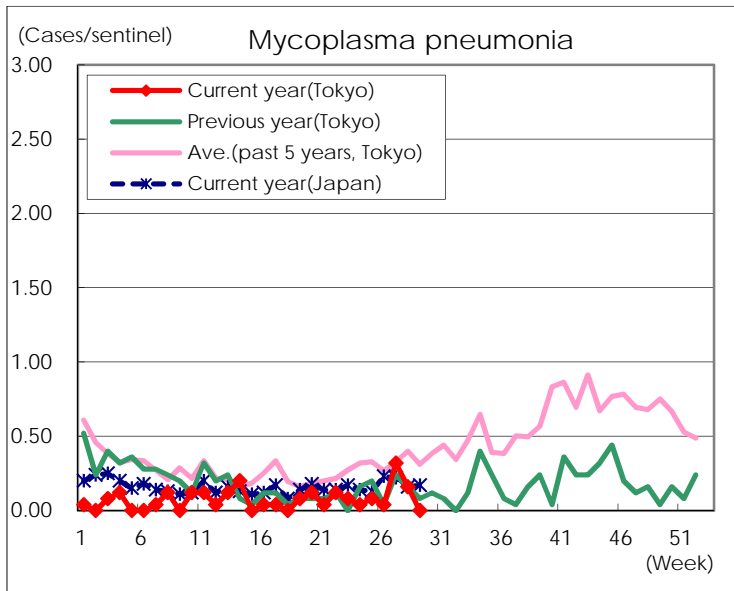
(Blank means 0.)

Disease Trend Graph (weekly reported cases per sentinel in comparison)









Number of sentinel facilities for weekly reporting		
Types of sentinels	Number of sentinels	Sentinels having reported
Pediatric	264	258
Influenza	419	410
Ophthalmic	39	38
Specially-designated	25	25