

2 August 2018 / Number 30

Surveillance System in Tokyo, Japan

The infectious diseases which all physicians must report

All physicians must report to health centers the incidence of the diseases which are shown at page one. Health centers electronically report the individual cases to Tokyo Metropolitan Infectious Disease Surveillance Center.

The infectious diseases required to be reported by the sentinels

The numbers of patients who visit the sentinel clinics or hospitals during a week are reported to health centers in Tokyo. And they electronically report the numbers to Tokyo Metropolitan Infectious Disease Surveillance Center. We have about 500 sentinel clinics and hospitals in Tokyo.

Tokyo Metropolitan Institute of Public Health

TEL:81-3-3363-3213 FAX:81-3-5332-7365

e-mail:www@tokyo-eiken.go.jp

URL:idsc.tokyo-eiken.go.jp/

Number of patients with the diseases which all physicians must report

Category	Diseases	Tokyo					Japan	
		27th	28th	29th	30th	Cum 2018	30th	Cum 2018
I	Ebola hemorrhagic fever							
	Crimean-Congo hemorrhagic fever							
	Smallpox							
	South American hemorrhagic fever							
	Plague							
	Marburg disease							
	Lassa fever							
II	Acute poliomyelitis							
	Tuberculosis	68	69	62	51	1,905	344	12,162
	Diphtheria							
	Severe Acute Respiratory Syndrome(SARS)							
	Middle East Respiratory Syndrome (MERS)							
	Avian influenza H5N1							
	Avian influenza H7N9							
III	Cholera							2
	Shigellosis	1		1	1	26	2	98
	Enterohemorrhagic Escherichia coli infection	13	21	9	38	185	182	1,501
	Typhoid fever					5		18
	Paratyphoid fever					6		12
IV	Hepatitis E	5	2	1	1	52	8	249
	West Nile fever							
	Hepatitis A	13	12	21	6	282	14	587
	Echinococcosis							7
	Yellow fever							
	Psittacosis		1			1		5
	Omsk hemorrhagic fever							
	Relapsing fever						1	3
	Kyasanur forest disease							
	Q fever							1
	Rabies							
	Coccidioidomycosis							2
	Monkeypox							
	Zika virus infection							
	Severe Fever with Thrombocytopenia Syndrome						3	51
	Hemorrhagic fever with renal syndrome							
	Western equine encephalitis							
	Tick-borne encephalitis							1
	Anthrax							
	Chikungunya fever							1
	Scrub typhus(Tsutsugamushi disease)					4		93
	Dengue fever	1	1	1		23	2	73
	Eastern equine encephalitis							
	Avian influenza (excluding H5N1 and H7N9)							
	Nipah virus infection							
	Japanese spotted fever						3	111
	Japanese encephalitis							
	Hantavirus pulmonary syndrome							
	Herpes B virus infection							
	Glanders							
	Brucellosis							2
	Venezuelan equine encephalitis							
	Hendra virus infection							
	Epidemic typhus							
Botulism					1		2	
Malaria					7	1	24	
Tularemia								
Lyme disease						1	3	
Lyssavirus infection(excluding rabies)								
Rift valley fever								
Melioidosis					1	1	2	
Legionellosis	6	4	2	6	69	32	1,080	
Leptospirosis					1		2	
Rocky mountain spotted fever								

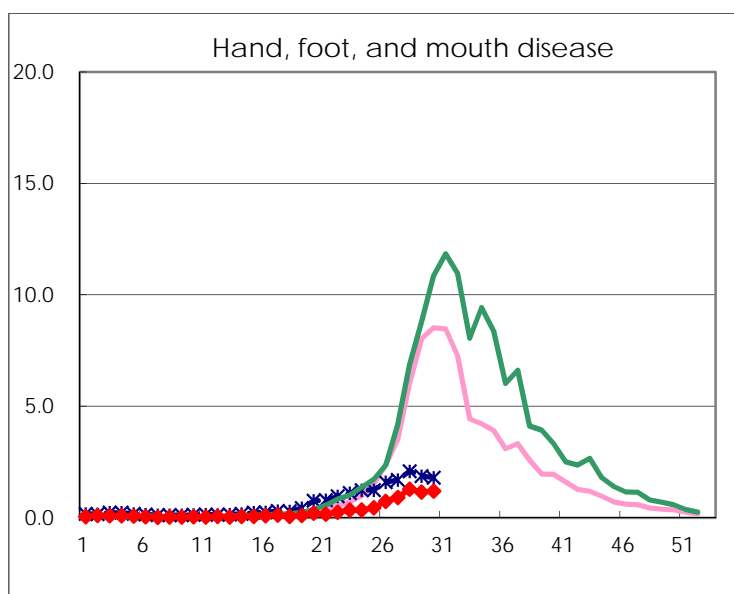
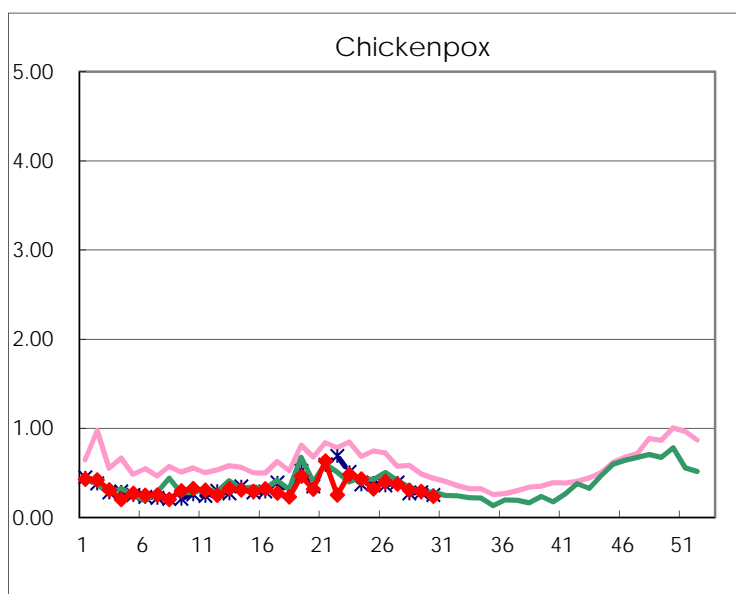
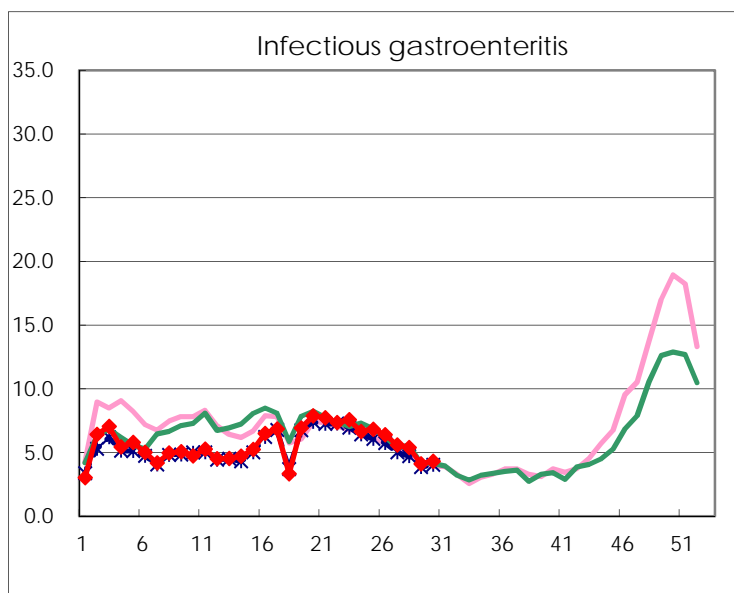
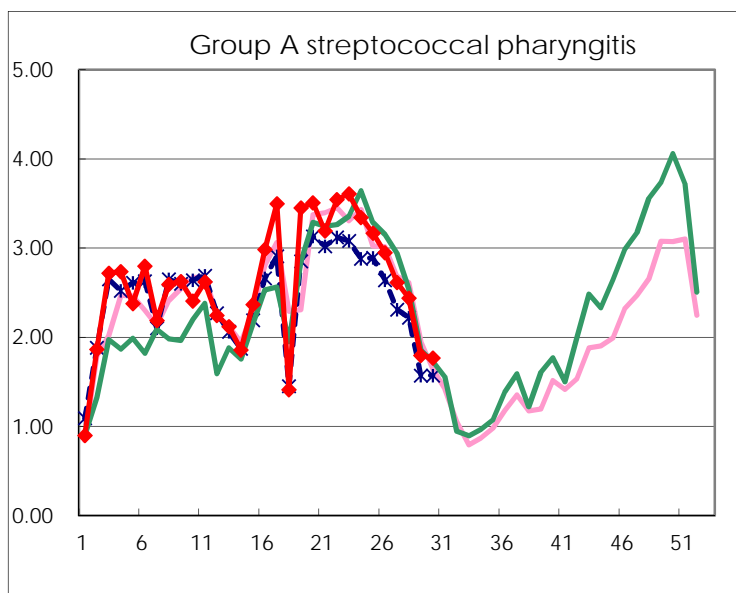
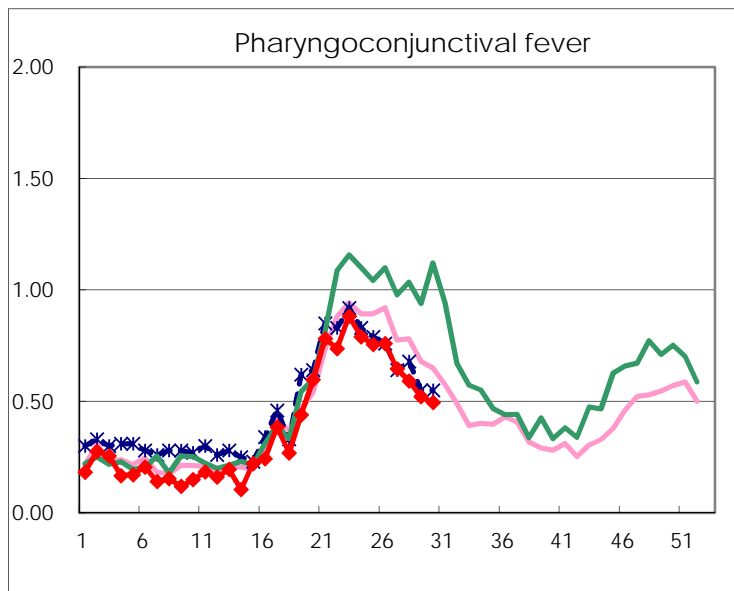
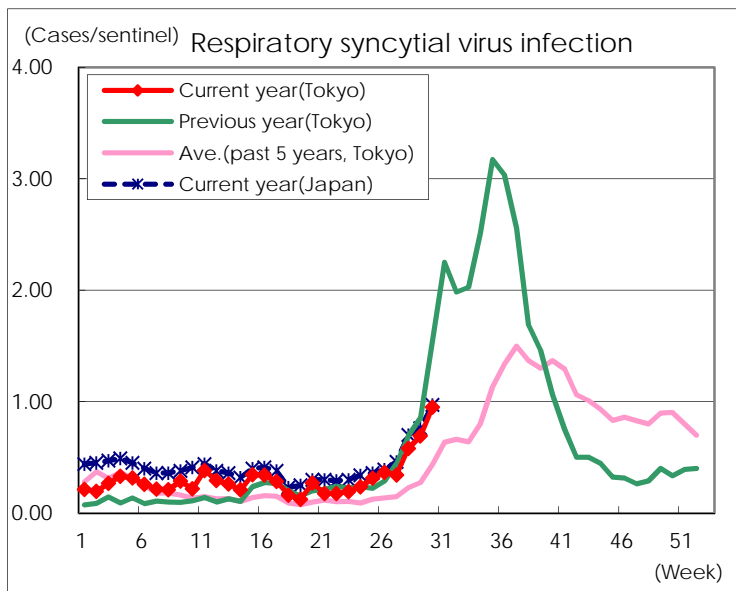
Category	Diseases	Tokyo					Japan	
		27th	28th	29th	30th	Cum 2018	30th	Cum 2018
V	Amebiasis	3	3	2	3	95	8	480
	Viral hepatitis(excluding hepatitis A and E)	2		2	1	27	1	128
	CRE infection	6	2	3	4	104	35	1,002
	Acute Flaccid Paralysis (excluding Acute poliomyelitis)					2		18
	Acute encephalitis(excluding JE and WNE)	1		2	1	41	7	426
	Cryptosporidiosis			1		3		11
	Creutzfeldt-Jakob disease	3				14	2	120
	Severe invasive streptococcal infections(TSLs)	2	1	1	1	60	5	425
	Acquired immunodeficiency syndrome (AIDS)	5	6	5	10	228	22	723
	Giardiasis				1	12	1	41
	Invasive <i>Haemophilus influenzae</i> disease	1			1	20	7	286
	Invasive meningococcal disease			1		6		25
	Invasive pneumococcal disease	4	3	4	3	252	18	2,133
	Varicella (limited to hospitalized case)	2	2		1	32	6	242
	Congenital rubella syndrome							
	Syphilis	39	42	39	32	998	81	3,820
	Disseminated cryptococcosis	1		1		12	1	100
	Tetanus				1	2	3	64
	Vancomycin-resistant <i>S. aureus</i> infection							
	Vancomycin-resistant <i>Enterococcus</i> infection			1		3	3	36
	Pertussis	49	66	89	96	594	216	3,846
Rubella	1		2	2	13	15	73	
Measles	1				14	2	202	
MDRA infection					3		9	

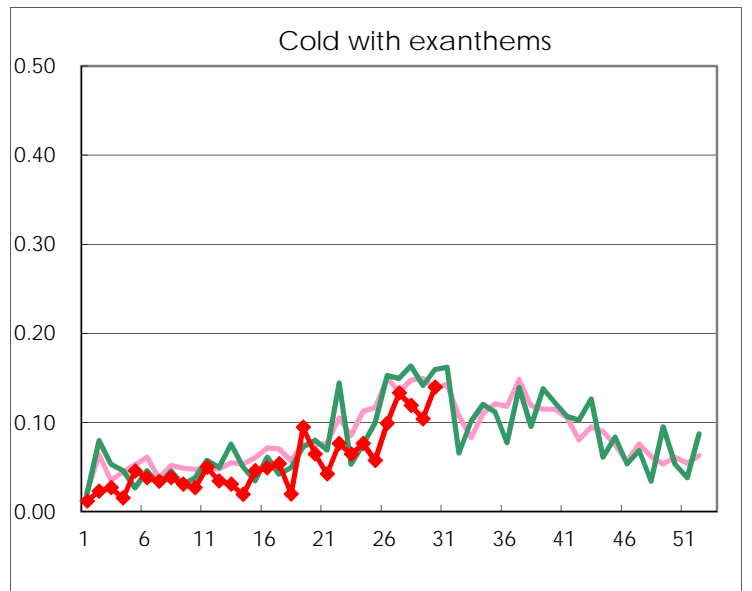
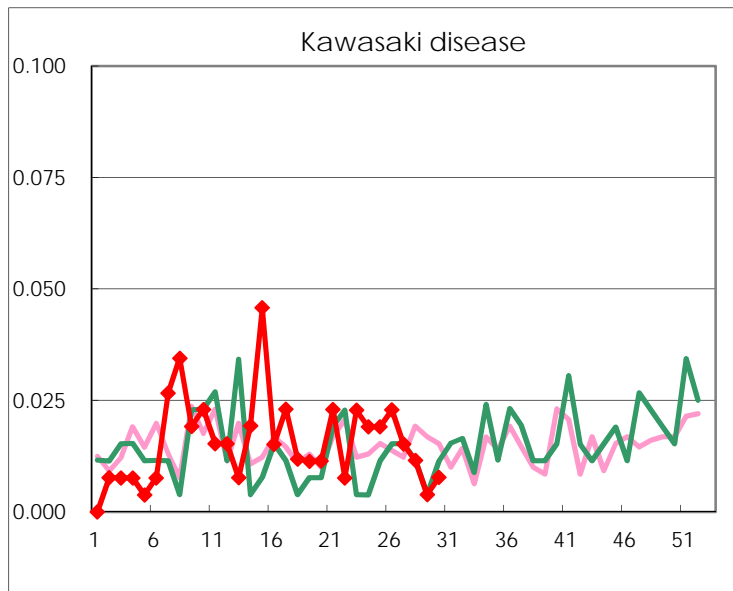
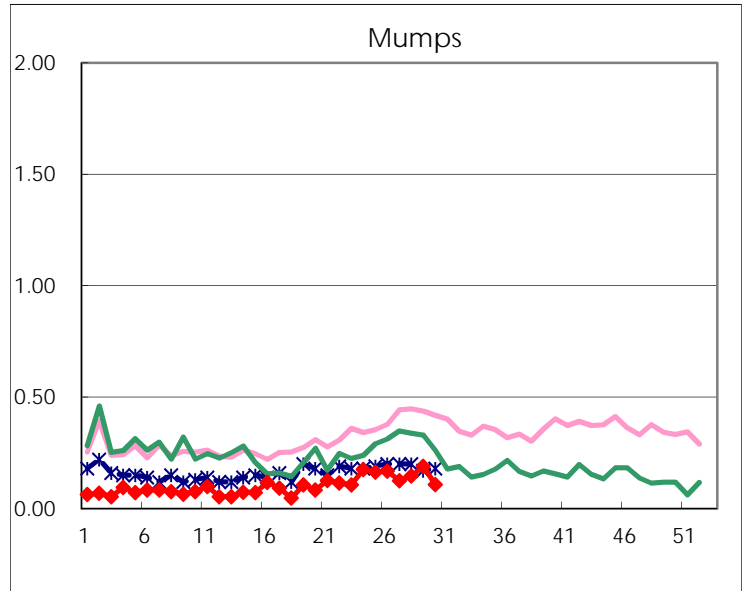
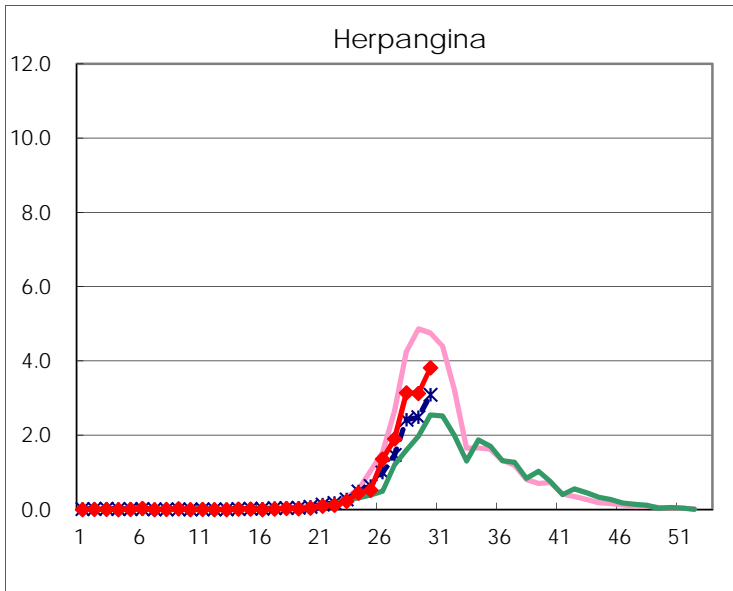
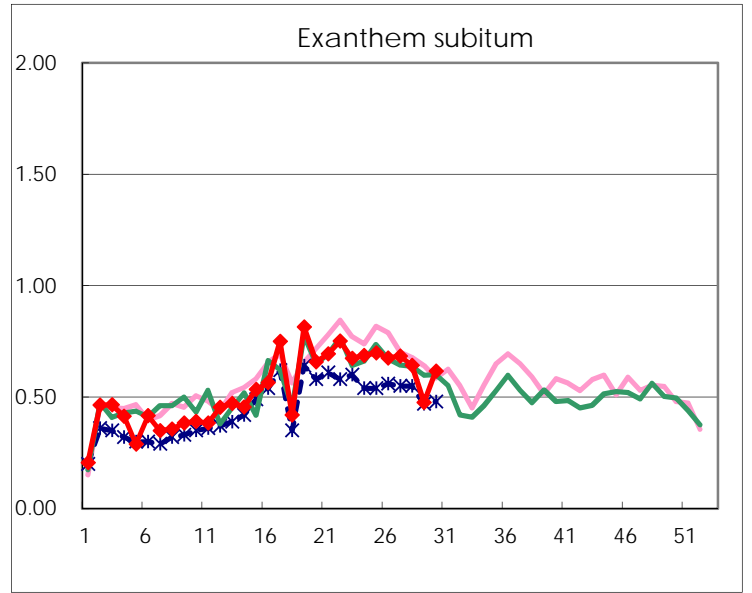
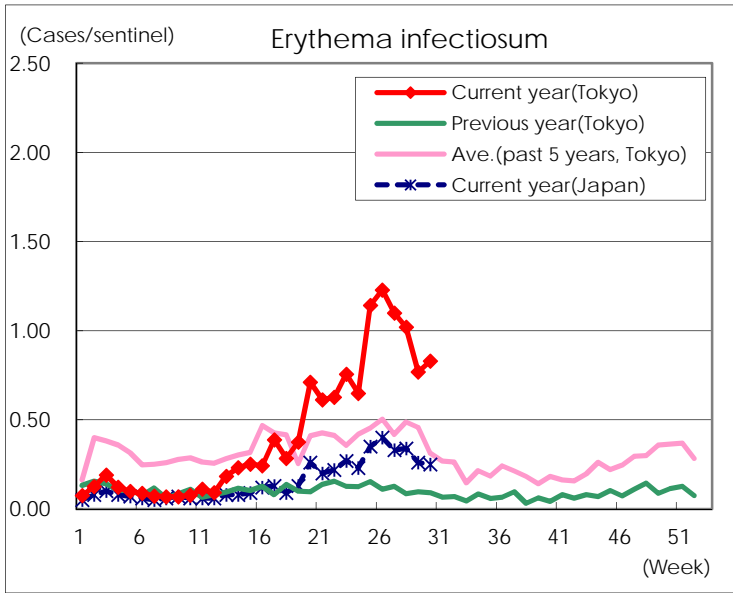
Number of patients with the diseases to be reported
by the designated clinics and hospitals

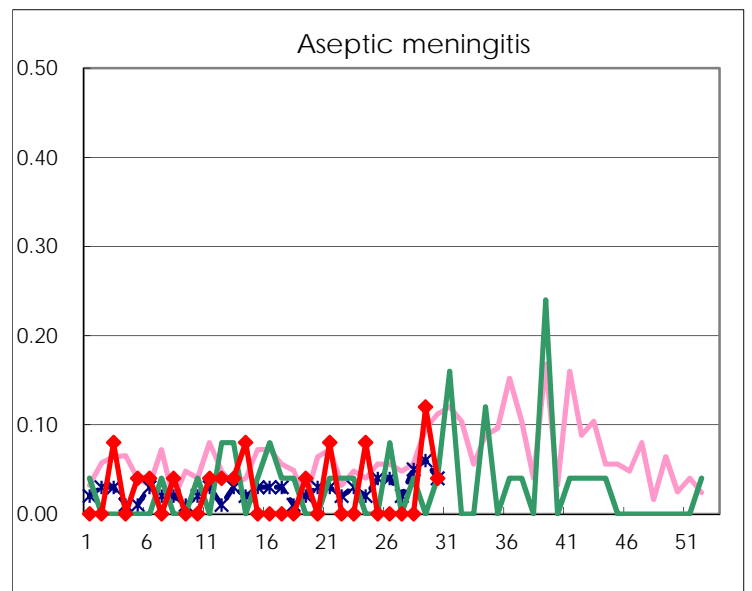
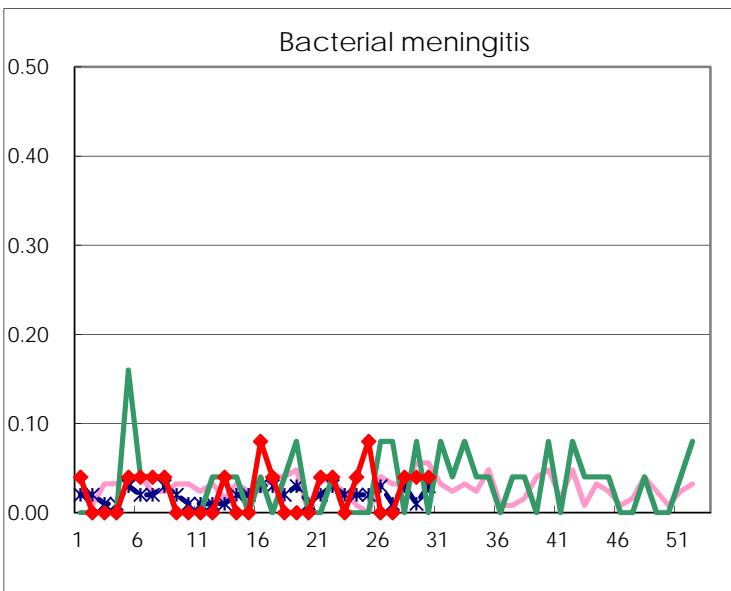
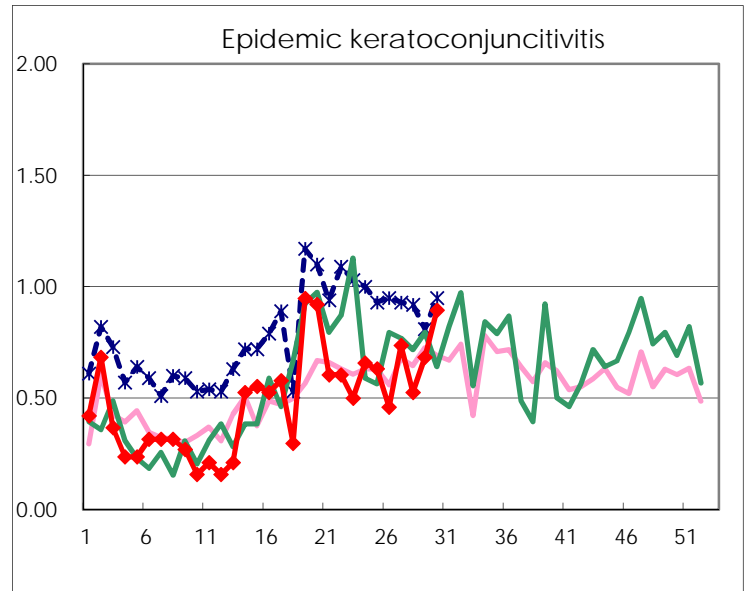
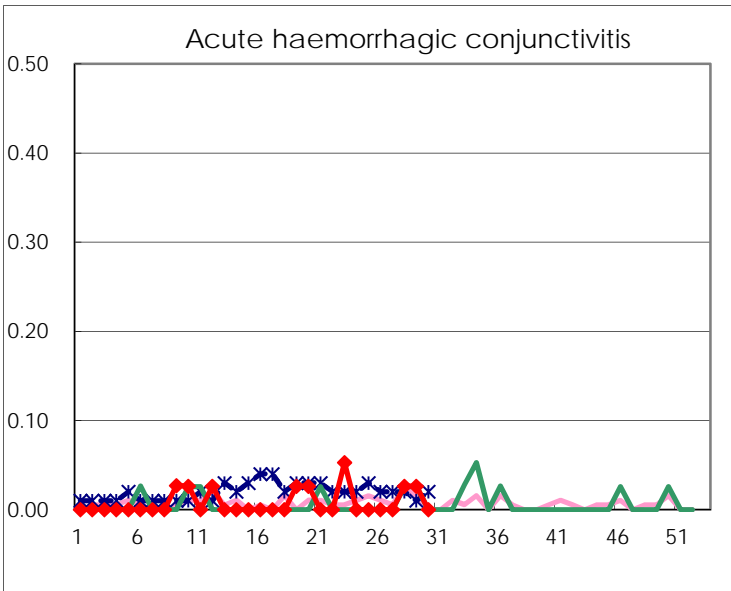
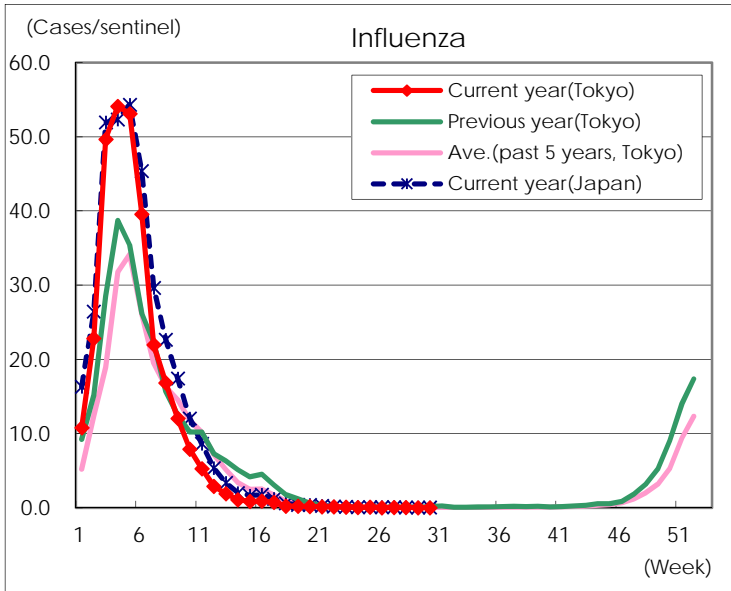
Diseases	Tokyo				
	27th	28th	29th	30th	/sentinel
Respiratory syncytial virus infection	90	151	179	245	0.95
Pharyngoconjunctival fever	170	154	135	128	0.50
Group A streptococcal pharyngitis	688	634	465	456	1.77
Infectious gastroenteritis	1,467	1,401	1,063	1,111	4.31
Chickenpox	98	79	75	61	0.24
Hand, foot, and mouth disease	240	334	297	308	1.19
Erythema infectiosum	289	265	199	214	0.83
Exanthem subitum	180	167	123	159	0.62
Herpangina	500	817	811	984	3.81
Mumps	33	38	49	28	0.11
Kawasaki disease	4	3	1	2	0.01
Cold with exanthems	35	31	27	36	0.14
Influenza	28	22	6	8	0.02
Acute hemorrhagic conjunctivitis		1	1		
Epidemic keratoconjunctivitis	28	20	26	34	0.89
Bacterial meningitis		1	1	1	0.04
Aseptic meningitis			3	1	0.04
<i>Mycoplasma pneumoniae</i>	8	4		2	0.08
Chlamydial pneumonia (excluding psittacosis)	1				
Infectious gastroenteritis (only by Rotavirus)	1		1		
Influenza-Associated Hospitalizations				2	0.08

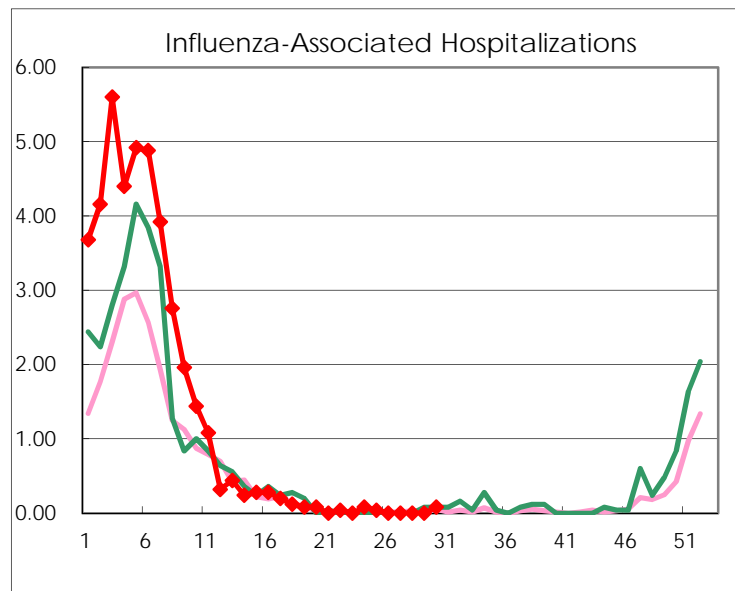
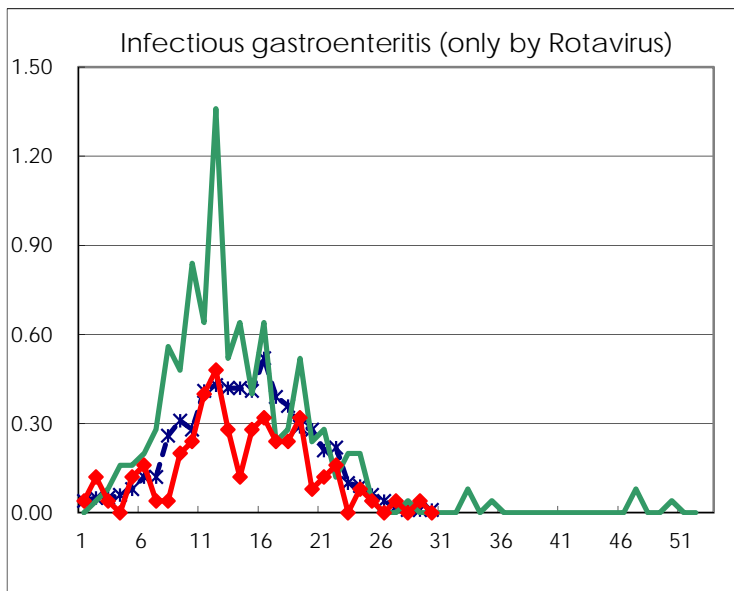
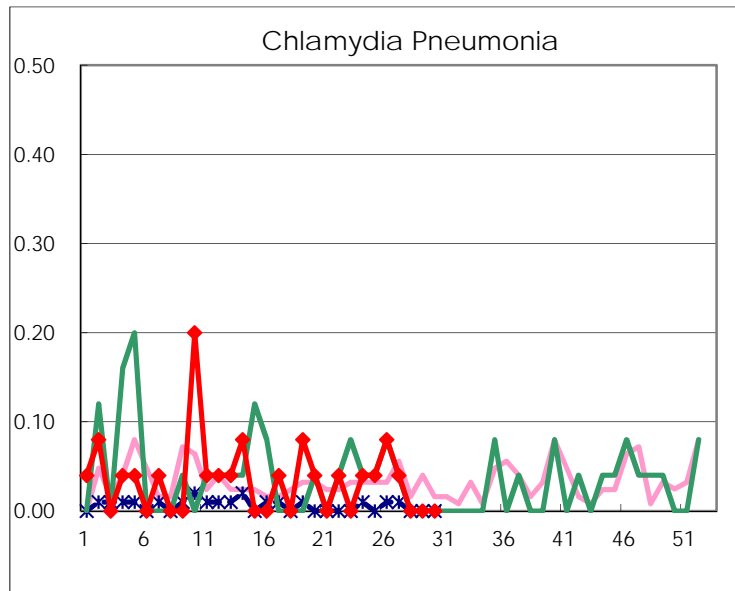
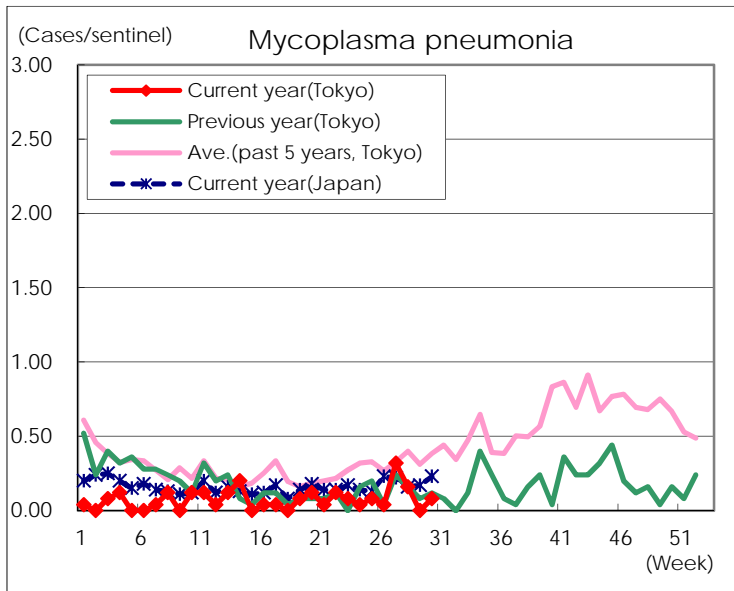
(Blank means 0.)

Disease Trend Graph (weekly reported cases per sentinel in comparison)









Number of sentinel facilities for weekly reporting		
Types of sentinels	Number of sentinels	Sentinels having reported
Pediatric	264	258
Influenza	419	410
Ophthalmic	39	38
Specially-designated	25	25