

## 9 August 2018 / Number 31

### Surveillance System in Tokyo, Japan

The infectious diseases which all physicians must report

All physicians must report to health centers the incidence of the diseases which are shown at page one. Health centers electronically report the individual cases to Tokyo Metropolitan Infectious Disease Surveillance Center.

The infectious diseases required to be reported by the sentinels

The numbers of patients who visit the sentinel clinics or hospitals during a week are reported to health centers in Tokyo. And they electronically report the numbers to Tokyo Metropolitan Infectious Disease Surveillance Center. We have about 500 sentinel clinics and hospitals in Tokyo.

Tokyo Metropolitan Institute of Public Health

TEL:81-3-3363-3213 FAX:81-3-5332-7365

e-mail:[www@tokyo-eiken.go.jp](mailto:www@tokyo-eiken.go.jp)

URL:[idsc.tokyo-eiken.go.jp/](http://idsc.tokyo-eiken.go.jp/)

---

Number of patients with the diseases which all physicians must report

Category	Diseases	Tokyo					Japan	
		28th	29th	30th	31st	Cum 2018	31st	Cum 2018
I	Ebola hemorrhagic fever							
	Crimean-Congo hemorrhagic fever							
	Smallpox							
	South American hemorrhagic fever							
	Plague							
	Marburg disease							
	Lassa fever							
II	Acute poliomyelitis							
	Tuberculosis	69	60	54	50	1,955	338	12,653
	Diphtheria							
	Severe Acute Respiratory Syndrome(SARS)							
	Middle East Respiratory Syndrome (MERS)							
	Avian influenza H5N1							
	Avian influenza H7N9							
III	Cholera							3
	Shigellosis		1	1		26		99
	Enterohemorrhagic Escherichia coli infection	21	9	39	19	205	163	1,697
	Typhoid fever	1			1	7	2	21
	Paratyphoid fever					6		12
IV	Hepatitis E	2	1	1	1	53	9	262
	West Nile fever							
	Hepatitis A	12	21	6	8	290	22	611
	Echinococcosis							7
	Yellow fever							
	Psittacosis	1				1		5
	Omsk hemorrhagic fever							
	Relapsing fever							4
	Kyasanur forest disease							
	Q fever							1
	Rabies							
	Coccidioidomycosis							2
	Monkeypox							
	Zika virus infection							
	Severe Fever with Thrombocytopenia Syndrome						1	52
	Hemorrhagic fever with renal syndrome							
	Western equine encephalitis							
	Tick-borne encephalitis							1
	Anthrax							
	Chikungunya fever							1
	Scrub typhus(Tsutsugamushi disease)					4	1	94
	Dengue fever	1	1		1	24	1	78
	Eastern equine encephalitis							
	Avian influenza (excluding H5N1 and H7N9)							
	Nipah virus infection							
	Japanese spotted fever						5	116
	Japanese encephalitis							
	Hantavirus pulmonary syndrome							
	Herpes B virus infection							
	Glanders							
	Brucellosis							2
	Venezuelan equine encephalitis							
	Hendra virus infection							
	Epidemic typhus							
Botulism					1		2	
Malaria				1	8	2	26	
Tularemia								
Lyme disease						1	5	
Lyssavirus infection(excluding rabies)								
Rift valley fever								
Melioidosis					1		2	
Legionellosis	4	2	6		69	25	1,119	
Leptospirosis					1		2	
Rocky mountain spotted fever								

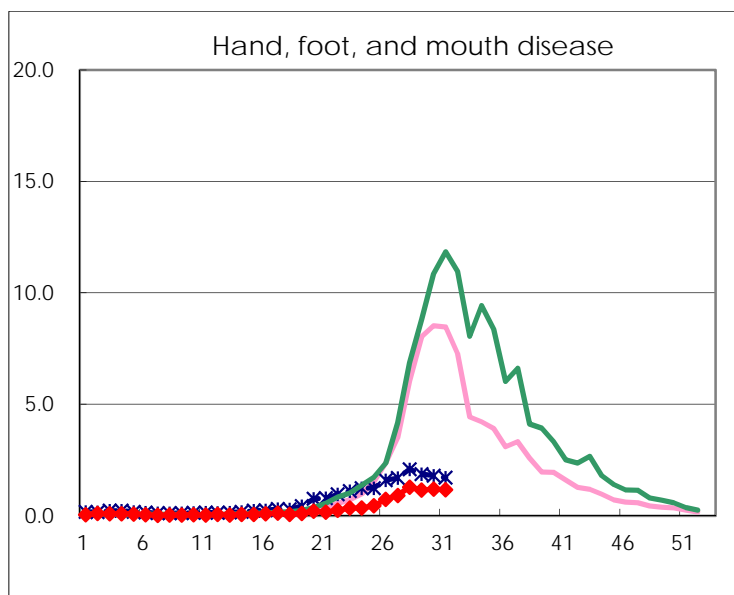
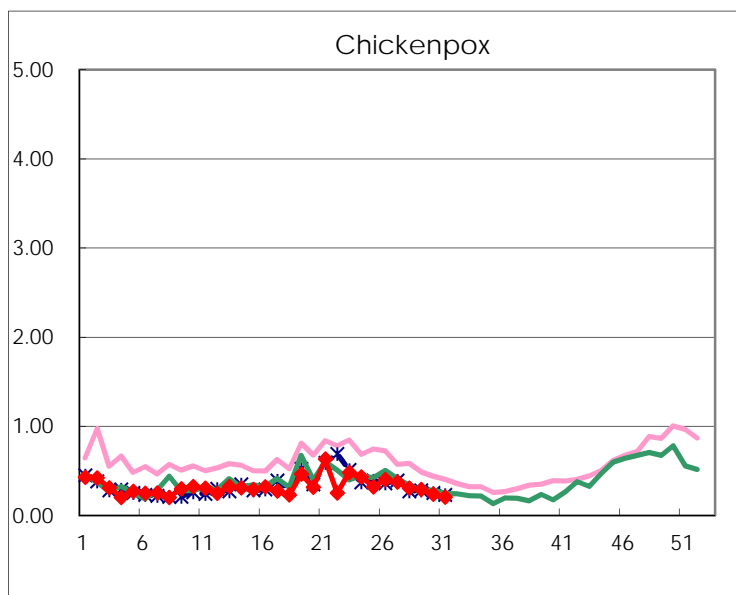
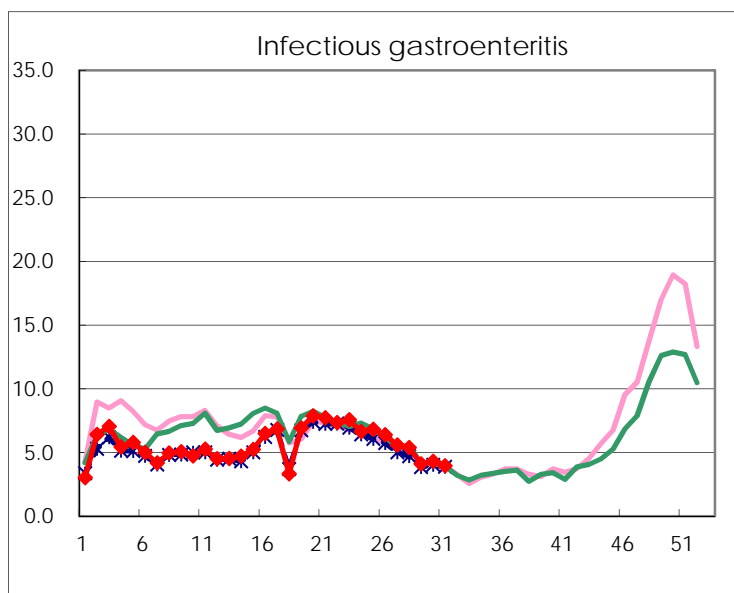
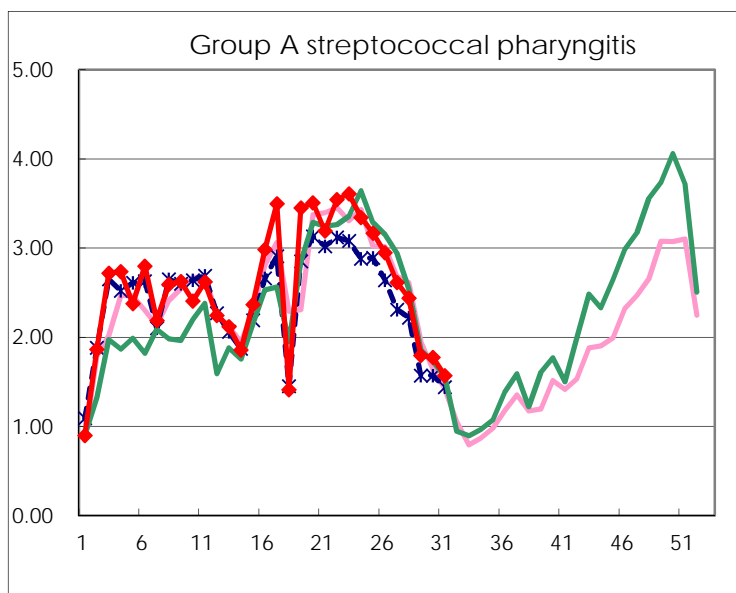
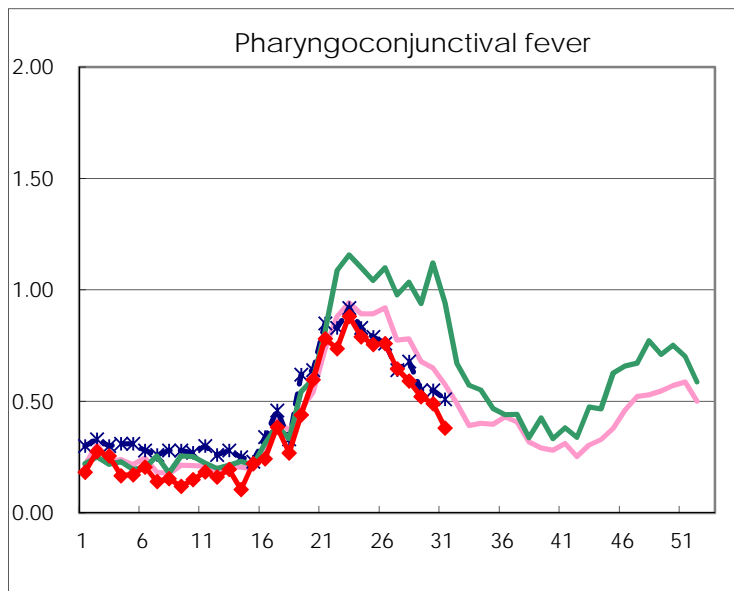
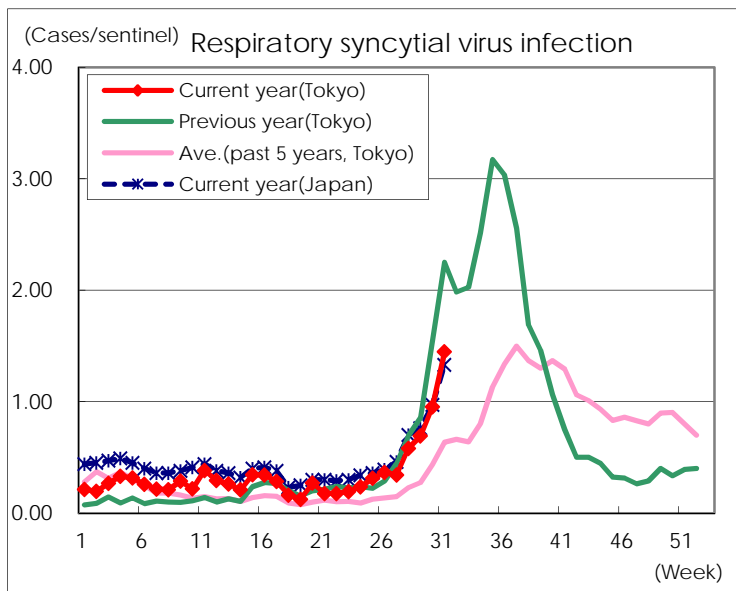
Category	Diseases	Tokyo					Japan	
		28th	29th	30th	31st	Cum 2018	31st	Cum 2018
V	Amebiasis	3	2	3	1	96	4	491
	Viral hepatitis(excluding hepatitis A and E)		2	1	1	28		129
	CRE infection	2	3	5	3	108	40	1,064
	Acute Flaccid Paralysis (excluding Acute poliomyelitis)					2		18
	Acute encephalitis(excluding JE and WNE)		2	1	2	43	7	444
	Cryptosporidiosis		1			3		11
	Creutzfeldt-Jakob disease				2	15	5	128
	Severe invasive streptococcal infections(TSLs)	1	1	1		60	8	442
	Acquired immunodeficiency syndrome (AIDS)	6	5	11	9	238	16	760
	Giardiasis			1		12	2	44
	Invasive <i>Haemophilus influenzae</i> disease			1	1	21	10	299
	Invasive meningococcal disease		1			6		25
	Invasive pneumococcal disease	3	4	3	6	258	23	2,178
	Varicella (limited to hospitalized case)	2		1	2	34	5	251
	Congenital rubella syndrome							
	Syphilis	42	40	32	31	1,030	88	3,977
	Disseminated cryptococcosis		1		1	13	4	108
	Tetanus			1		2		66
	Vancomycin-resistant <i>S. aureus</i> infection							
	Vancomycin-resistant <i>Enterococcus</i> infection		1			3	2	40
	Pertussis	66	89	96	83	677	201	4,229
Rubella		2	4	4	19	19	96	
Measles					14		201	
MDRA infection					3		12	

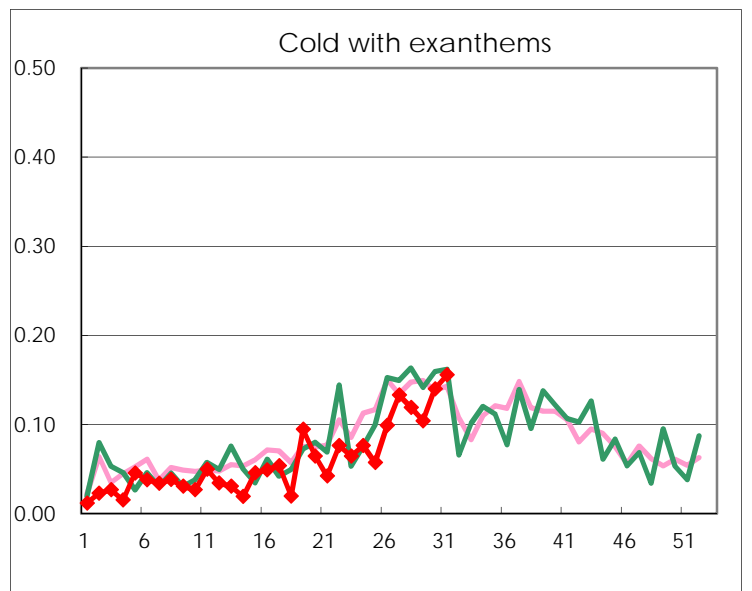
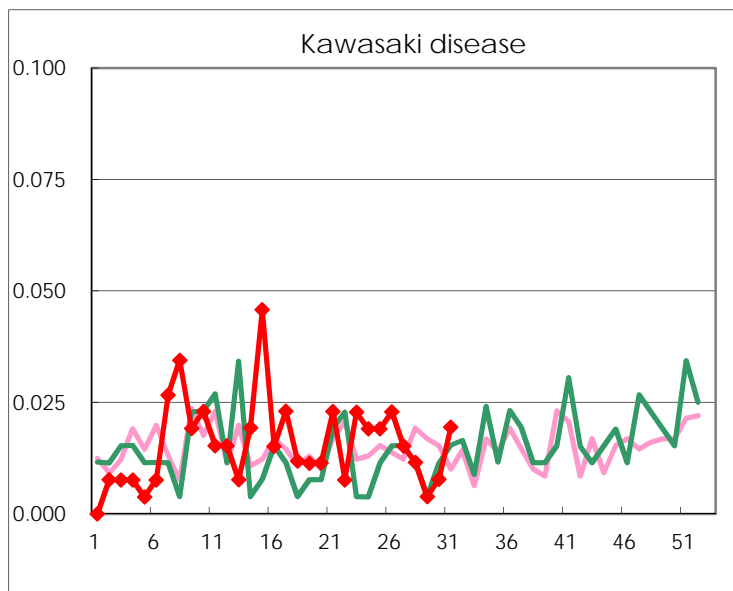
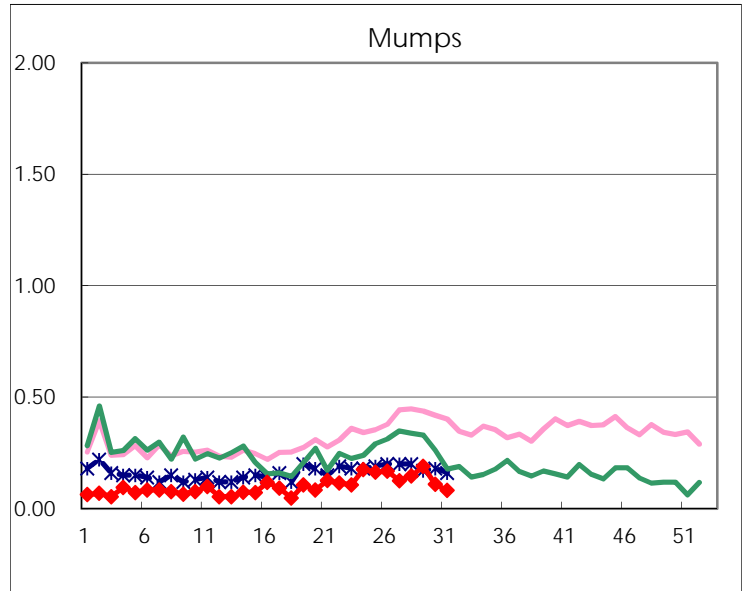
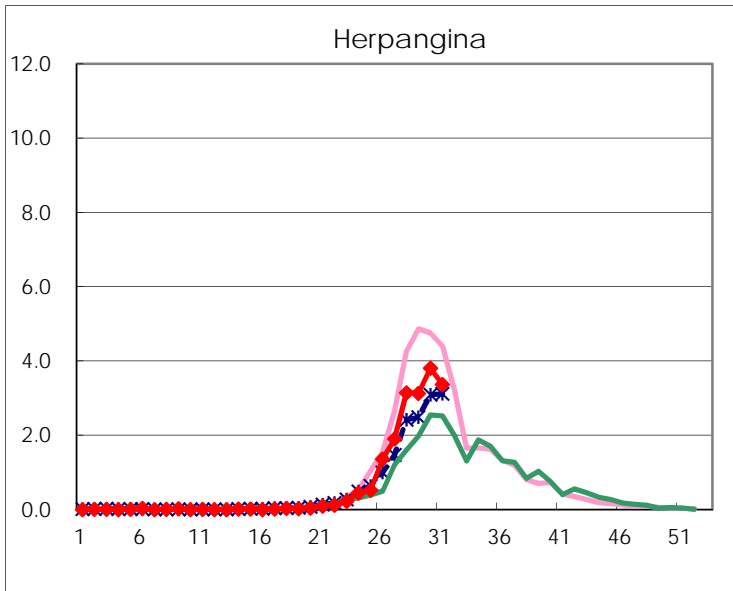
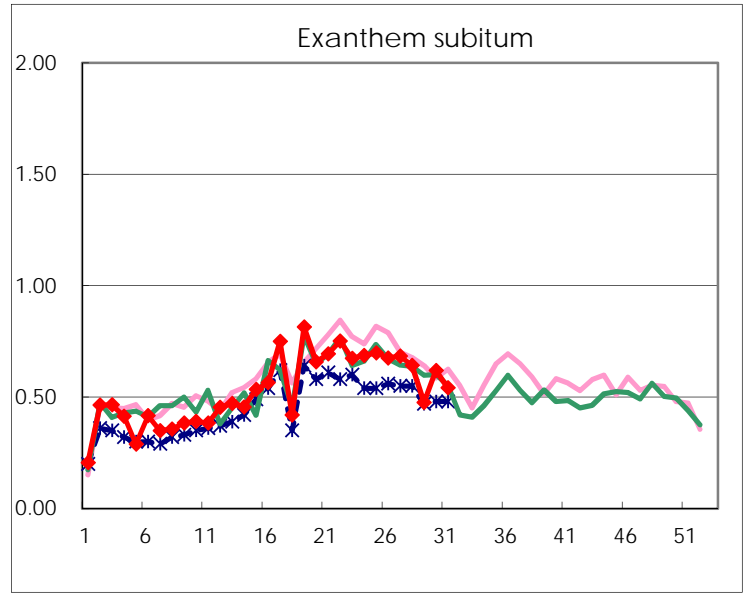
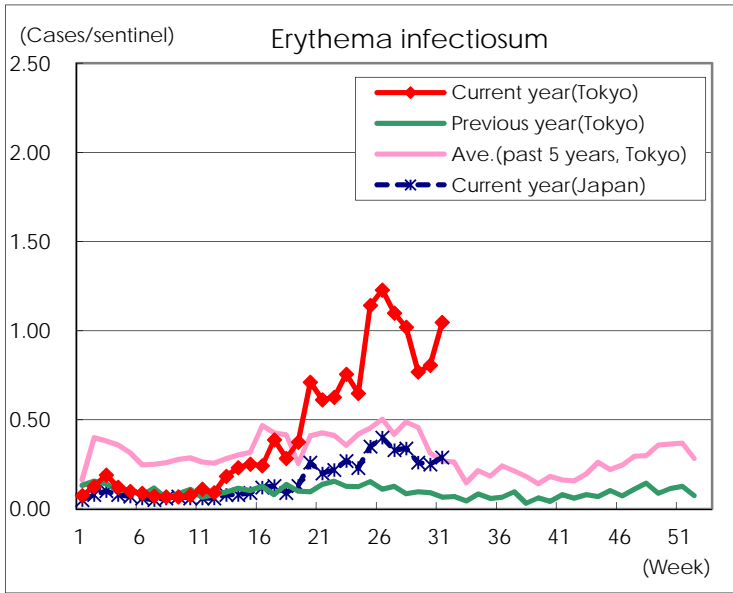
Number of patients with the diseases to be reported  
by the designated clinics and hospitals

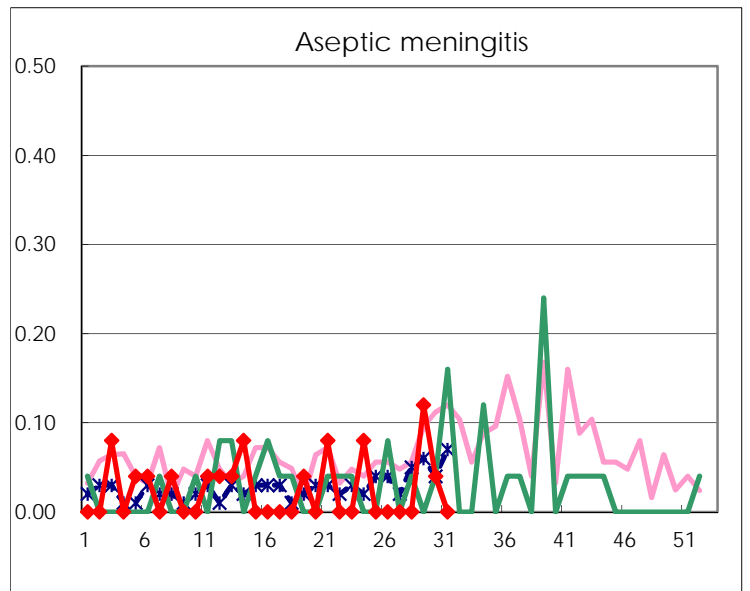
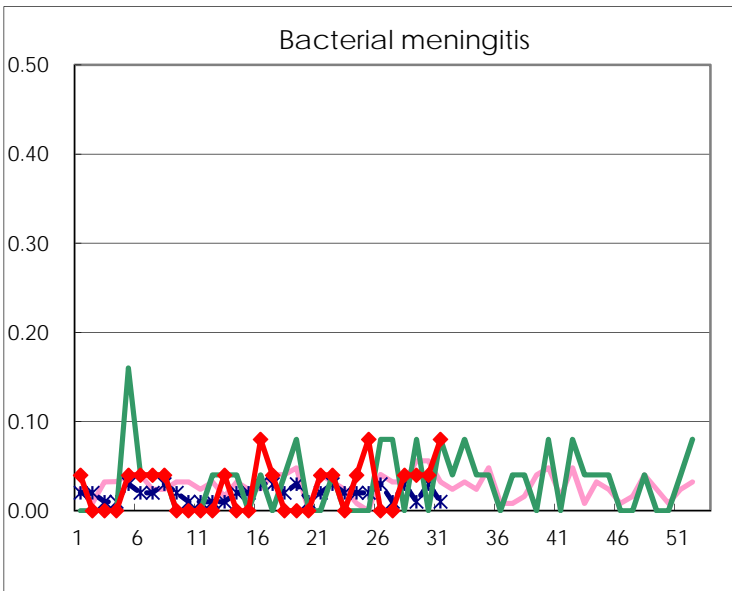
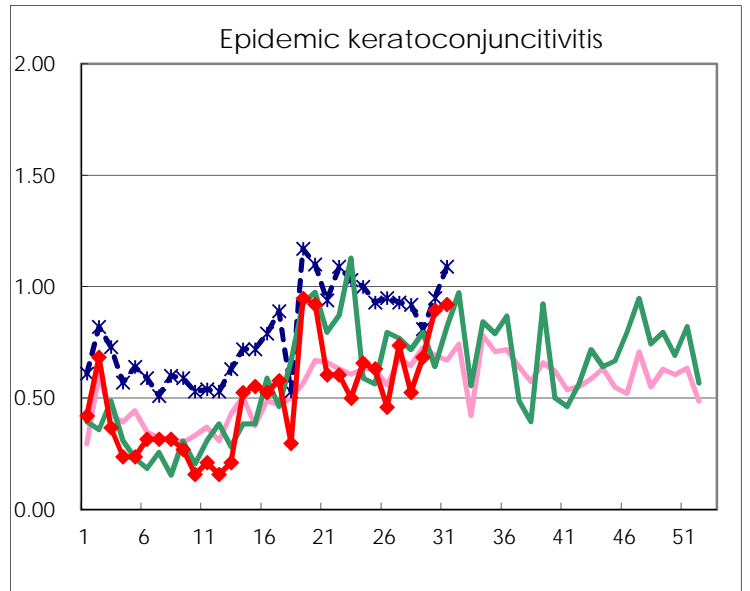
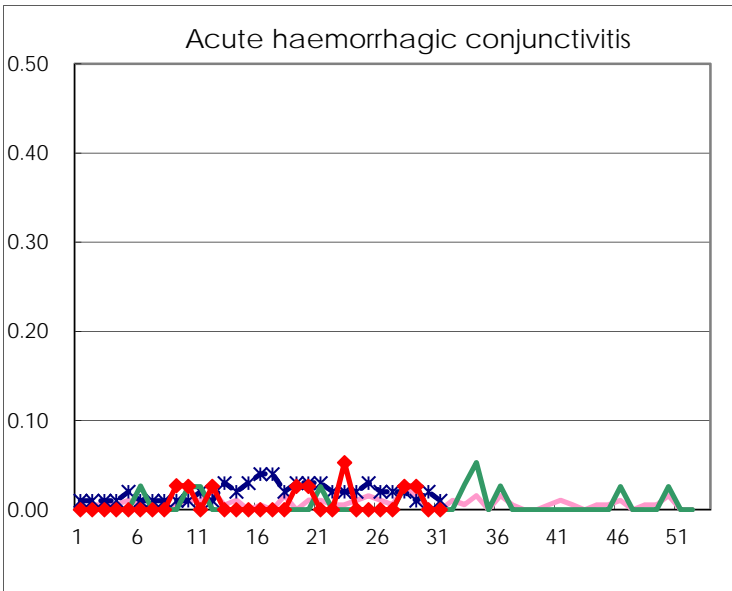
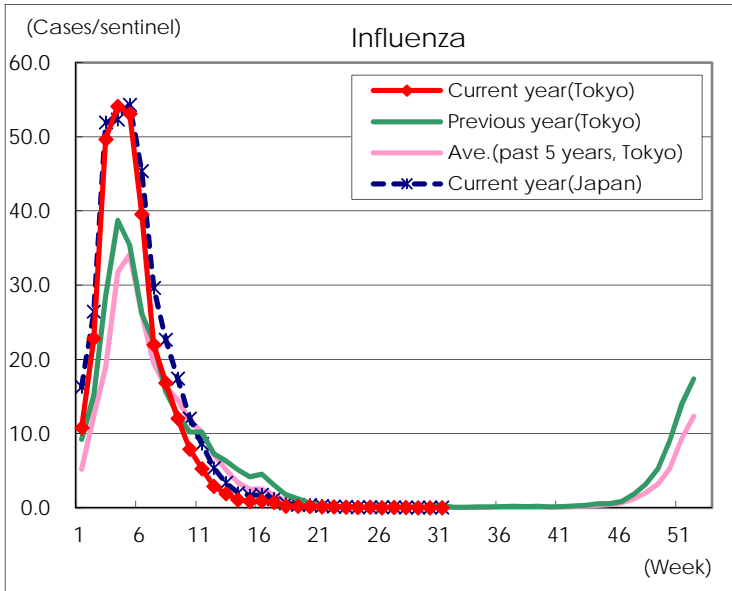
Diseases	Tokyo				
	28th	29th	30th	31st	/sentinel
Respiratory syncytial virus infection	151	179	245	372	1.45
Pharyngoconjunctival fever	154	135	126	98	0.38
Group A streptococcal pharyngitis	634	465	456	403	1.57
Infectious gastroenteritis	1,401	1,063	1,104	1,013	3.94
Chickenpox	79	75	61	53	0.21
Hand, foot, and mouth disease	334	297	308	298	1.16
Erythema infectiosum	265	199	207	269	1.05
Exanthem subitum	167	123	159	139	0.54
Herpangina	817	811	978	865	3.37
Mumps	38	49	28	21	0.08
Kawasaki disease	3	1	2	5	0.02
Cold with exanthems	31	27	36	40	0.16
Influenza	22	6	8	10	0.02
Acute hemorrhagic conjunctivitis	1	1			
Epidemic keratoconjunctivitis	20	26	34	35	0.92
Bacterial meningitis	1	1	1	2	0.08
Aseptic meningitis		3	1		
<i>Mycoplasma pneumoniae</i>	4		2	3	0.12
Chlamydial pneumonia (excluding psittacosis)				1	0.04
Infectious gastroenteritis (only by Rotavirus)		1			
Influenza-Associated Hospitalizations			2		

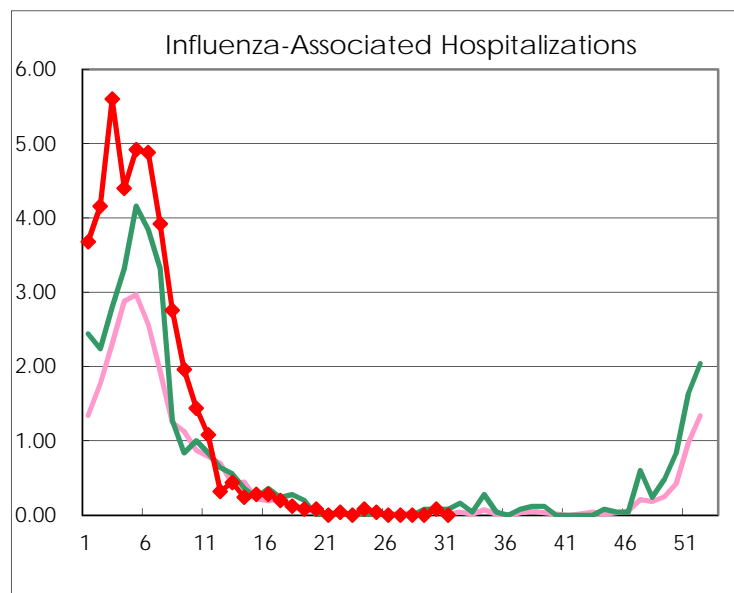
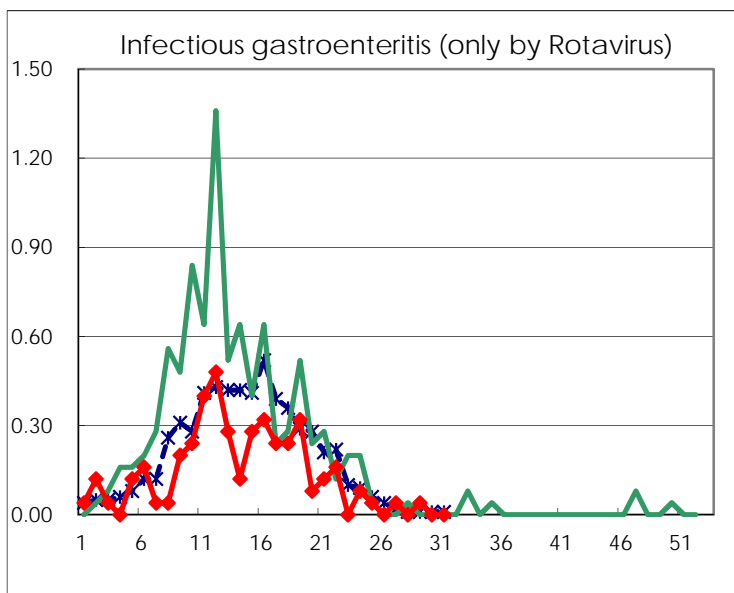
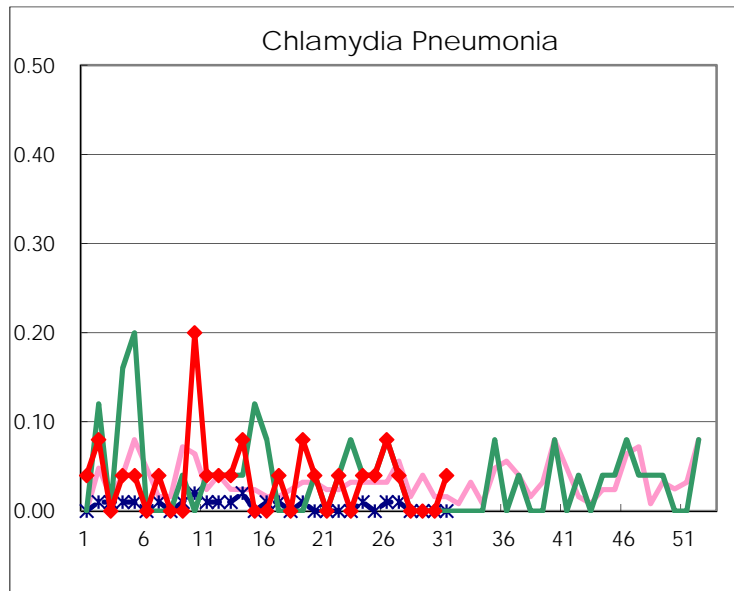
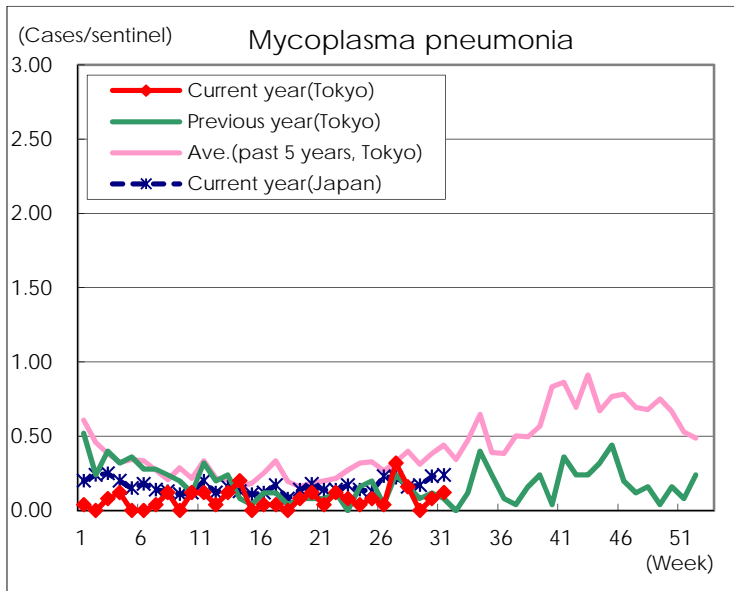
( Blank means 0. )

# Disease Trend Graph (weekly reported cases per sentinel in comparison)









Number of sentinel facilities for weekly reporting		
Types of sentinels	Number of sentinels	Sentinels having reported
Pediatric	264	257
Influenza	419	408
Ophthalmic	39	38
Specially-designated	25	25