

**16 August 2018 / Number 32**

## Surveillance System in Tokyo, Japan

The infectious diseases which all physicians must report

All physicians must report to health centers the incidence of the diseases which are shown at page one. Health centers electronically report the individual cases to Tokyo Metropolitan Infectious Disease Surveillance Center.

The infectious diseases required to be reported by the sentinels

The numbers of patients who visit the sentinel clinics or hospitals during a week are reported to health centers in Tokyo. And they electronically report the numbers to Tokyo Metropolitan Infectious Disease Surveillance Center. We have about 500 sentinel clinics and hospitals in Tokyo.

Tokyo Metropolitan Institute of Public Health

TEL:81-3-3363-3213 FAX:81-3-5332-7365

e-mail:[www@tokyo-eiken.go.jp](mailto:www@tokyo-eiken.go.jp)

URL:[idsc.tokyo-eiken.go.jp/](http://idsc.tokyo-eiken.go.jp/)

---

Number of patients with the diseases which all physicians must report

Category	Diseases	Tokyo					Japan	
		29th	30th	31st	32nd	Cum 2018	32nd	Cum 2018
I	Ebola hemorrhagic fever							
	Crimean-Congo hemorrhagic fever							
	Smallpox							
	South American hemorrhagic fever							
	Plague							
	Marburg disease							
	Lassa fever							
II	Acute poliomyelitis							
	Tuberculosis	62	55	51	62	2,019	330	13,128
	Diphtheria							
	Severe Acute Respiratory Syndrome(SARS)							
	Middle East Respiratory Syndrome (MERS)							
	Avian influenza H5N1							
	Avian influenza H7N9							
III	Cholera							3
	Shigellosis	1	1			26	1	100
	Enterohemorrhagic Escherichia coli infection	9	39	20	24	230	229	1,936
	Typhoid fever			1		7		21
	Paratyphoid fever				1	7		13
IV	Hepatitis E	1	1	1	3	56	5	271
	West Nile fever							
	Hepatitis A	21	6	8	14	304	23	641
	Echinococcosis							7
	Yellow fever							
	Psittacosis					1		5
	Omsk hemorrhagic fever							
	Relapsing fever							5
	Kyasanur forest disease							
	Q fever				2	2	2	3
	Rabies							
	Coccidioidomycosis							2
	Monkeypox							
	Zika virus infection							
	Severe Fever with Thrombocytopenia Syndrome						1	53
	Hemorrhagic fever with renal syndrome							
	Western equine encephalitis							
	Tick-borne encephalitis							1
	Anthrax							
	Chikungunya fever							1
	Scrub typhus(Tsutsugamushi disease)					4		94
	Dengue fever	1		1	2	26	5	84
	Eastern equine encephalitis							
	Avian influenza (excluding H5N1 and H7N9)							
	Nipah virus infection							
	Japanese spotted fever						8	125
	Japanese encephalitis							
	Hantavirus pulmonary syndrome							
	Herpes B virus infection							
	Glanders							
	Brucellosis							2
	Venezuelan equine encephalitis							
	Hendra virus infection							
	Epidemic typhus							
Botulism					1		2	
Malaria			1	1	9	2	28	
Tularemia								
Lyme disease							6	
Lyssavirus infection(excluding rabies)								
Rift valley fever								
Melioidosis					1		2	
Legionellosis	2	6		4	73	25	1,148	
Leptospirosis					1	1	3	
Rocky mountain spotted fever								

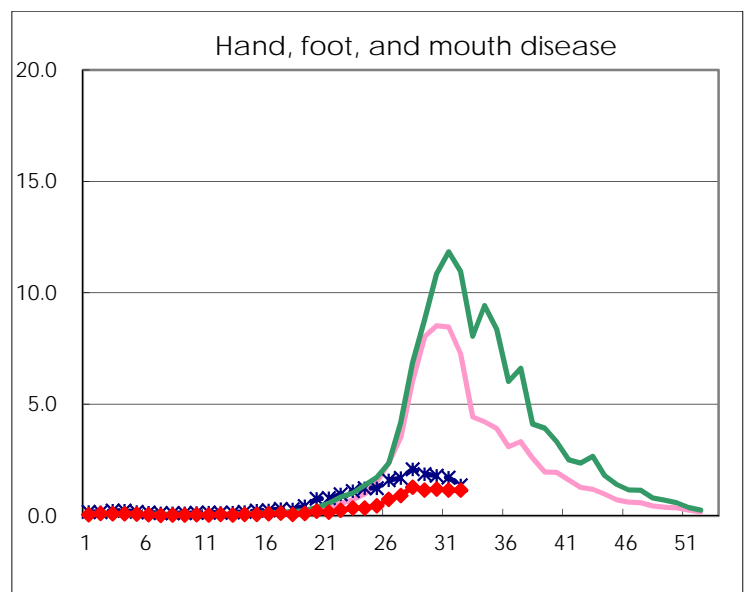
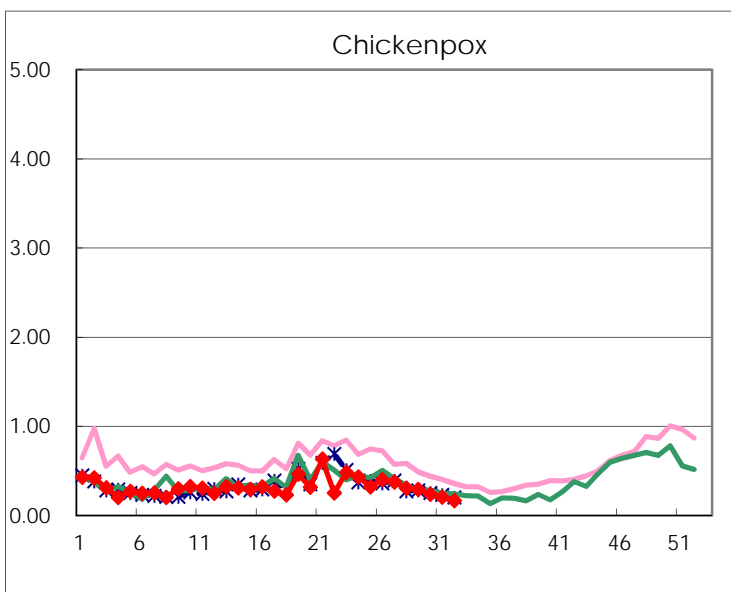
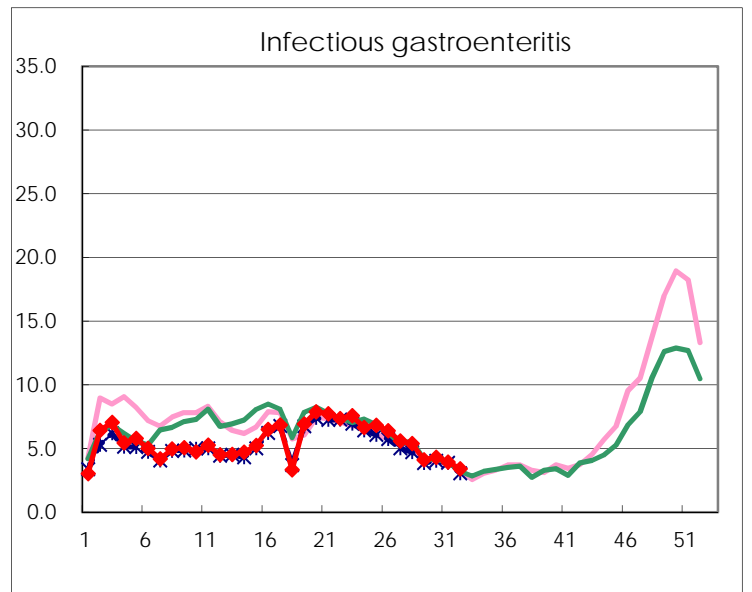
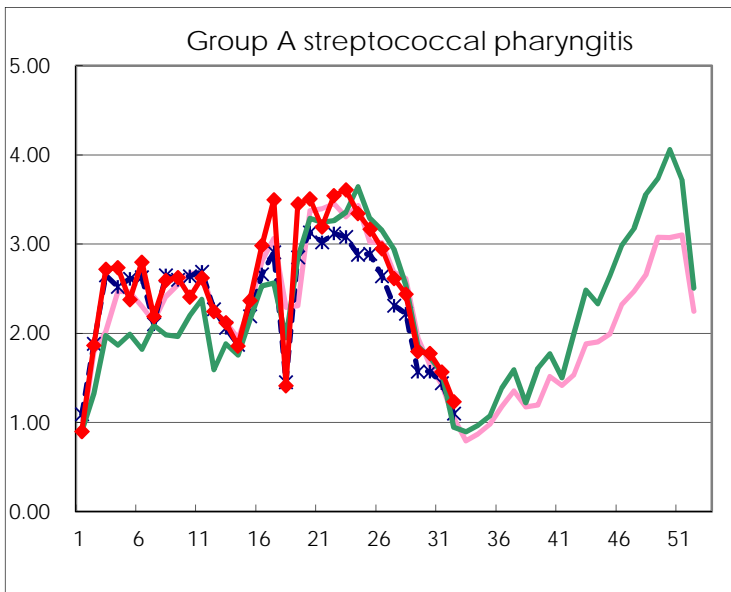
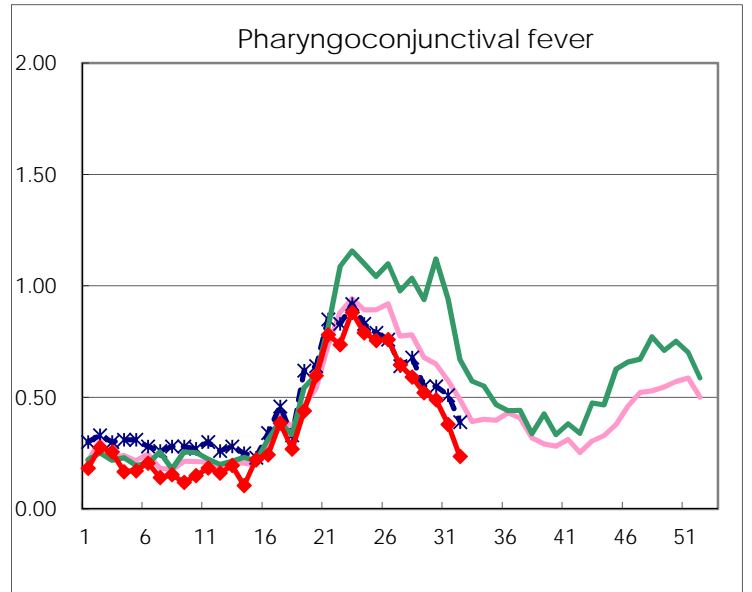
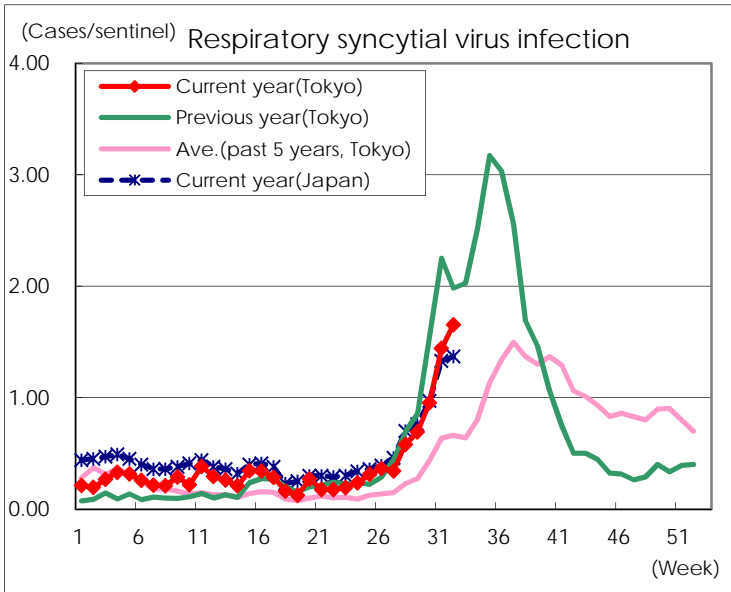
Category	Diseases	Tokyo					Japan	
		29th	30th	31st	32nd	Cum 2018	32nd	Cum 2018
V	Amebiasis	2	3	1	3	99	7	507
	Viral hepatitis(excluding hepatitis A and E)	2	1	1	3	31	3	134
	CRE infection	3	5	3	2	110	25	1,106
	Acute Flaccid Paralysis (excluding Acute poliomyelitis)					2	1	19
	Acute encephalitis(excluding JE and WNE)	2	1	2	2	45	11	457
	Cryptosporidiosis	1				3		11
	Creutzfeldt-Jakob disease			2		15	3	132
	Severe invasive streptococcal infections(TSLs)	1	1			60	8	451
	Acquired immunodeficiency syndrome (AIDS)	5	11	9	12	250	24	794
	Giardiasis		1			12	2	47
	Invasive <i>Haemophilus influenzae</i> disease		1	1		21	5	304
	Invasive meningococcal disease	1				6		25
	Invasive pneumococcal disease	4	3	6	3	261	26	2,212
	Varicella (limited to hospitalized case)		1	2	3	37	6	262
	Congenital rubella syndrome							
	Syphilis	40	32	32	32	1,063	89	4,116
	Disseminated cryptococcosis	1		1		13	2	110
	Tetanus		1			2	4	70
	Vancomycin-resistant <i>S. aureus</i> infection							
	Vancomycin-resistant <i>Enterococcus</i> infection	1				3	2	42
	Pertussis	89	96	84	99	778	241	4,564
Rubella	2	4	7	16	39	39	139	
Measles					14		200	
MDRA infection					3		13	

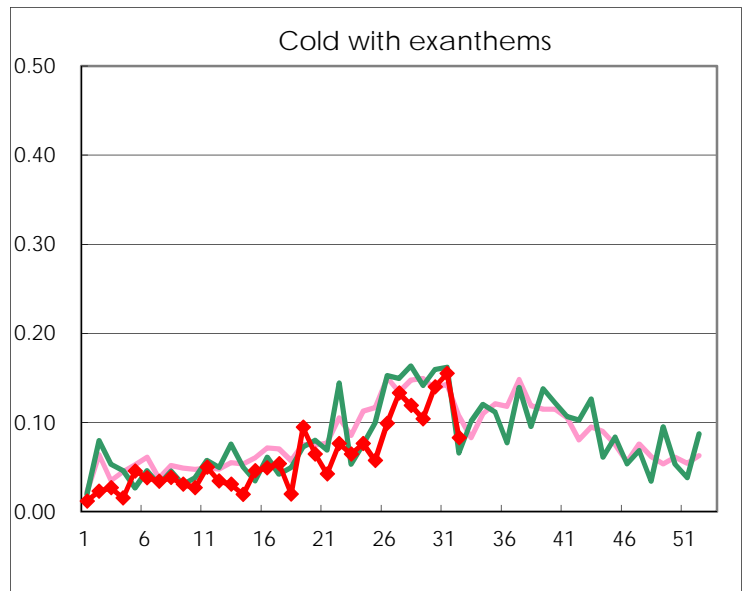
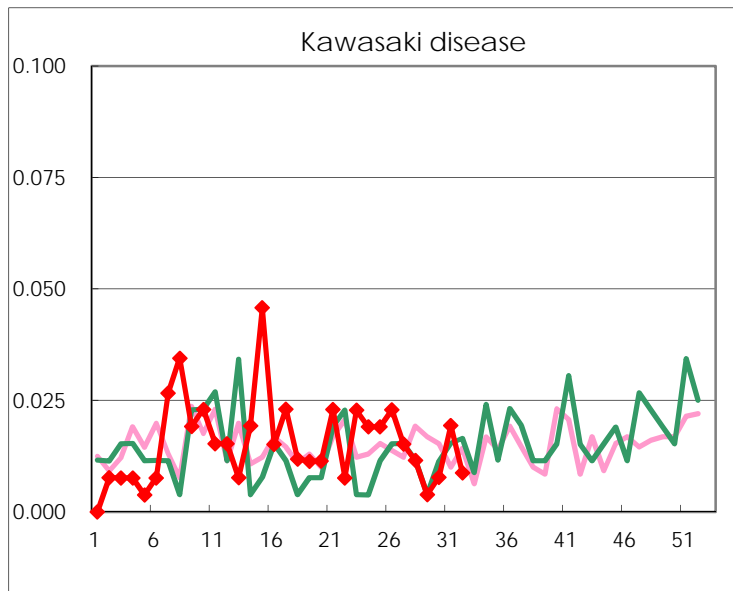
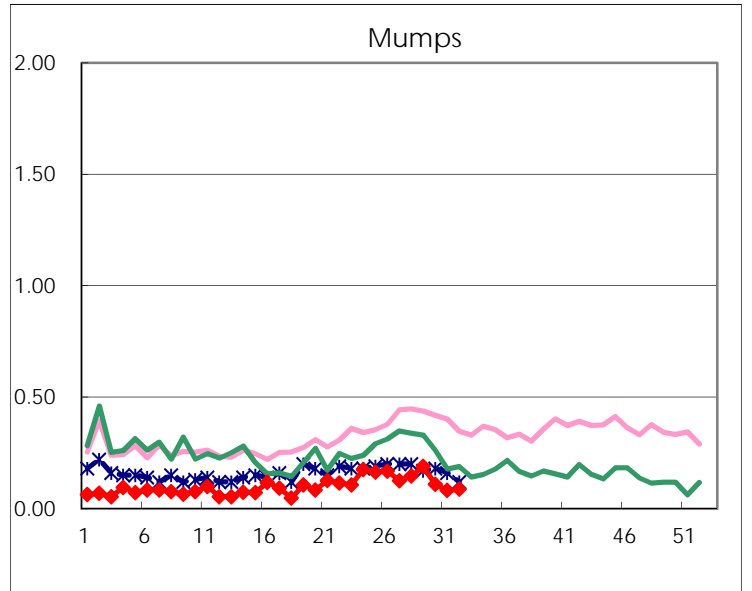
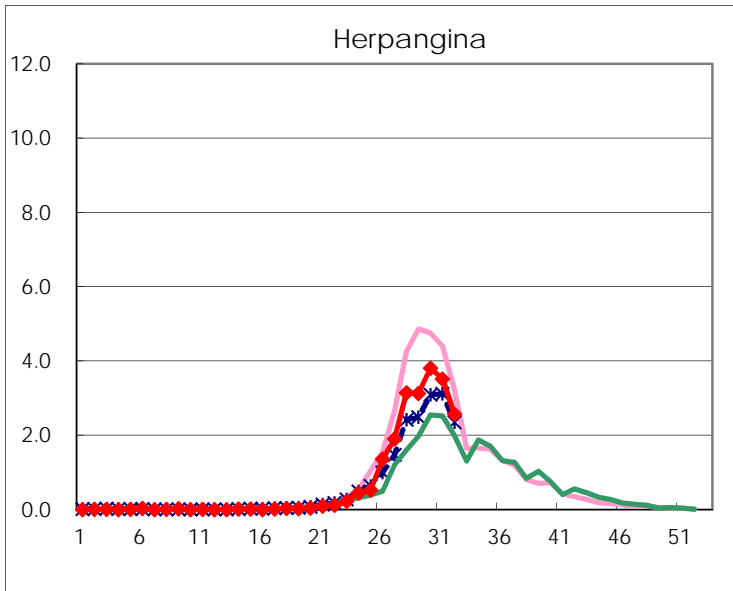
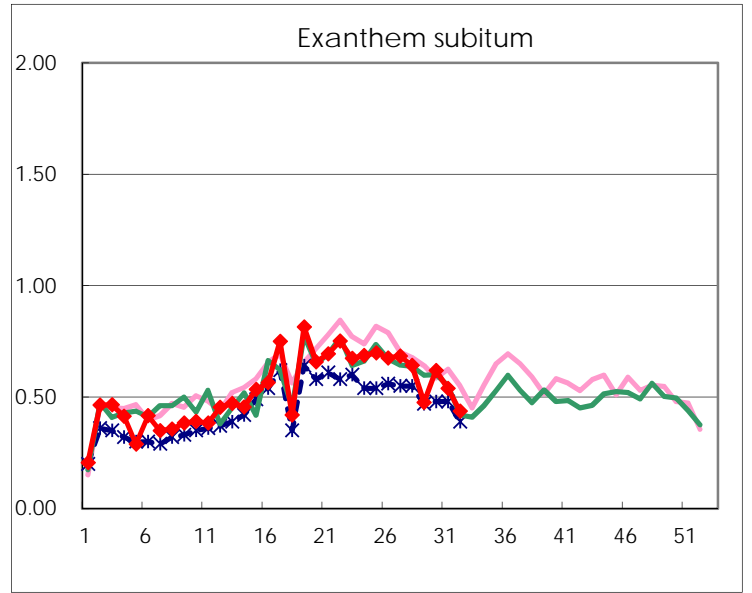
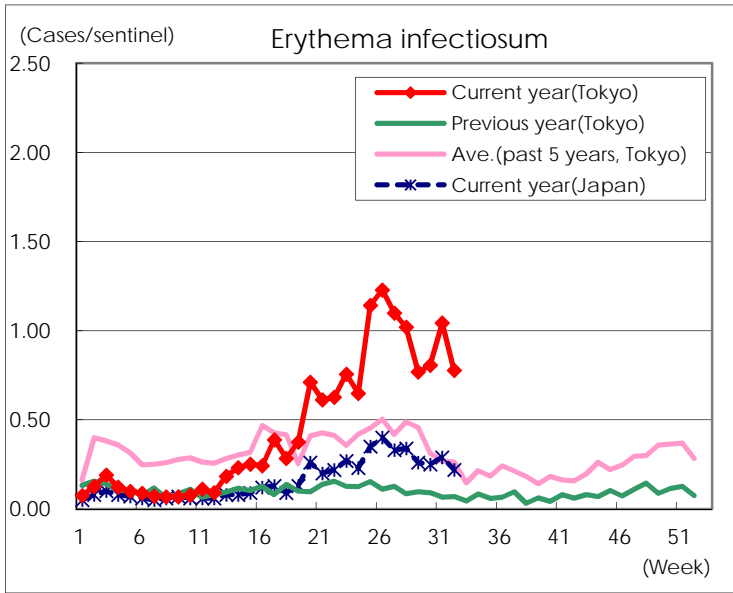
Number of patients with the diseases to be reported  
by the designated clinics and hospitals

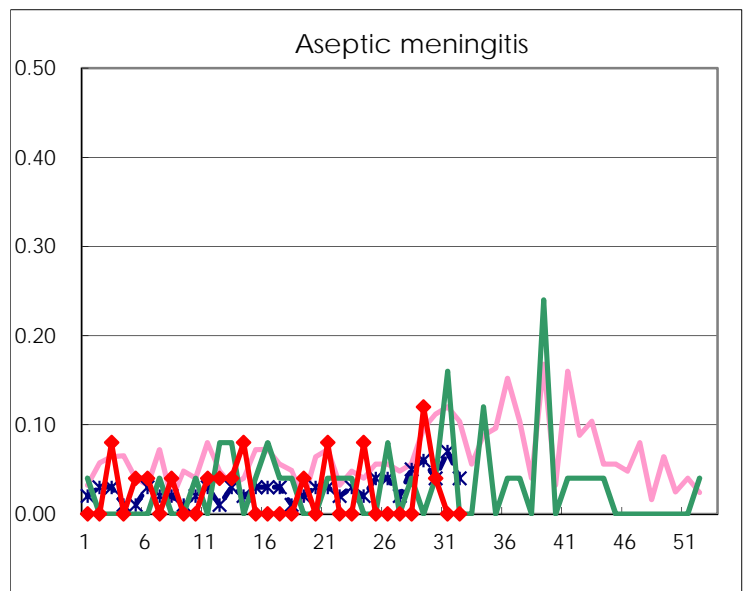
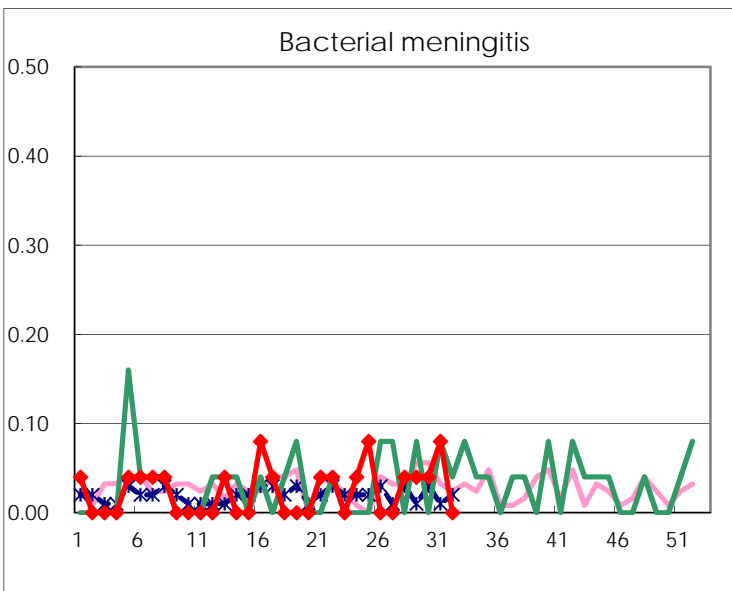
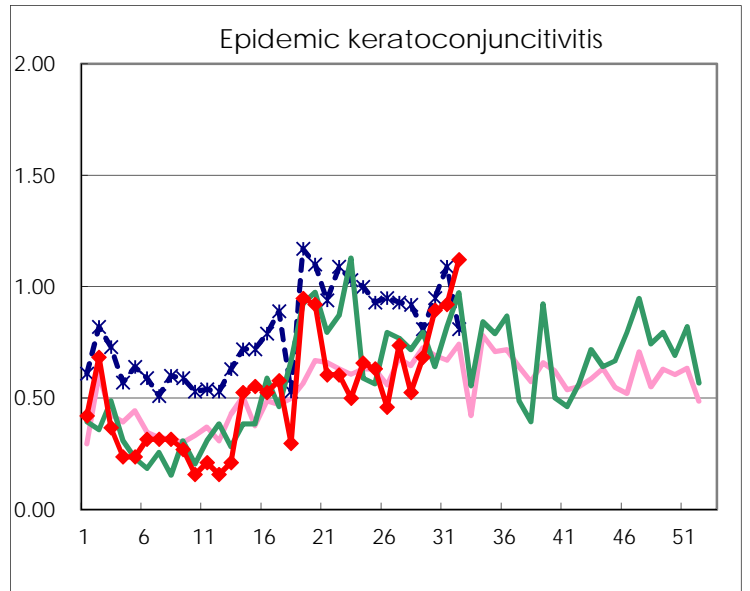
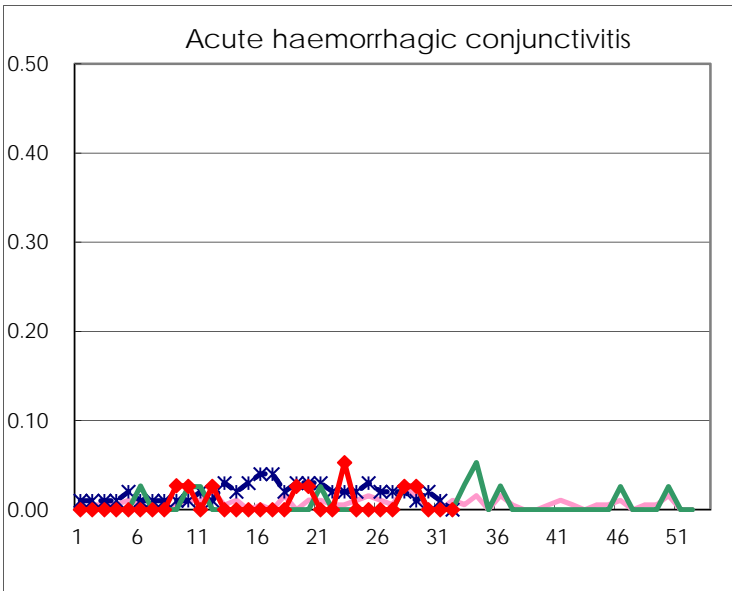
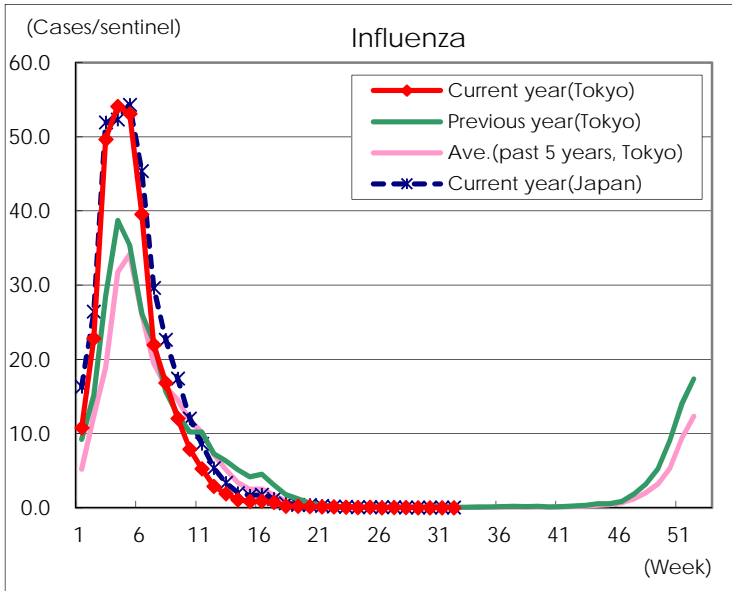
Diseases	Tokyo				
	29th	30th	31st	32nd	/sentinel
Respiratory syncytial virus infection	179	245	372	379	1.66
Pharyngoconjunctival fever	135	126	98	54	0.24
Group A streptococcal pharyngitis	465	456	404	282	1.23
Infectious gastroenteritis	1,063	1,104	1,013	778	3.40
Chickenpox	75	61	53	38	0.17
Hand, foot, and mouth disease	297	308	298	263	1.15
Erythema infectiosum	199	207	269	178	0.78
Exanthem subitum	123	159	139	100	0.44
Herpangina	811	978	908	589	2.57
Mumps	49	28	21	20	0.09
Kawasaki disease	1	2	5	2	0.01
Cold with exanthems	27	36	40	19	0.08
Influenza	6	8	10	9	0.03
Acute hemorrhagic conjunctivitis	1				
Epidemic keratoconjunctivitis	26	34	35	37	1.12
Bacterial meningitis	1	1	2		
Aseptic meningitis	3	1			
<i>Mycoplasma pneumoniae</i>		2	3	2	0.08
Chlamydial pneumonia (excluding psittacosis)			1	1	0.04
Infectious gastroenteritis (only by Rotavirus)	1				
Influenza-Associated Hospitalizations		2			

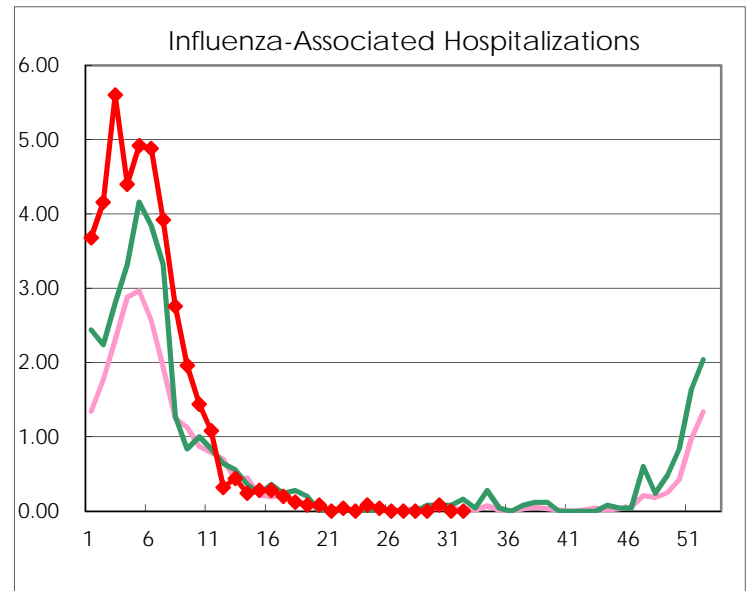
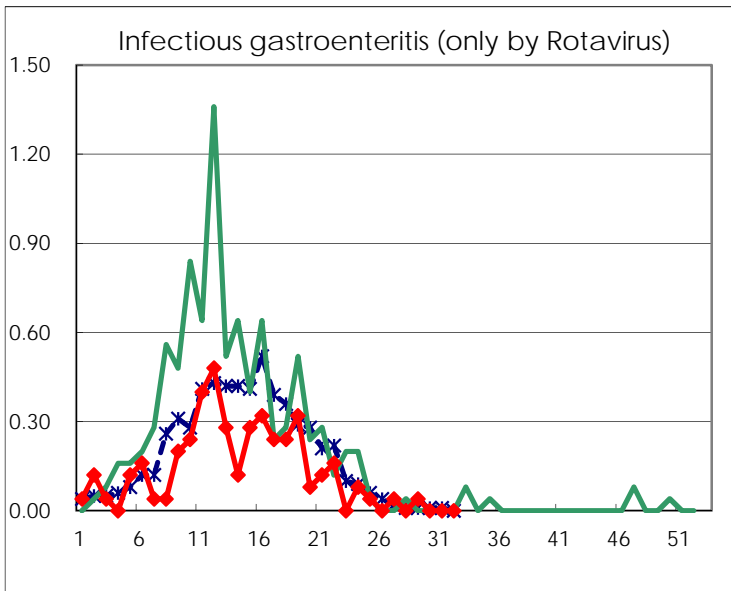
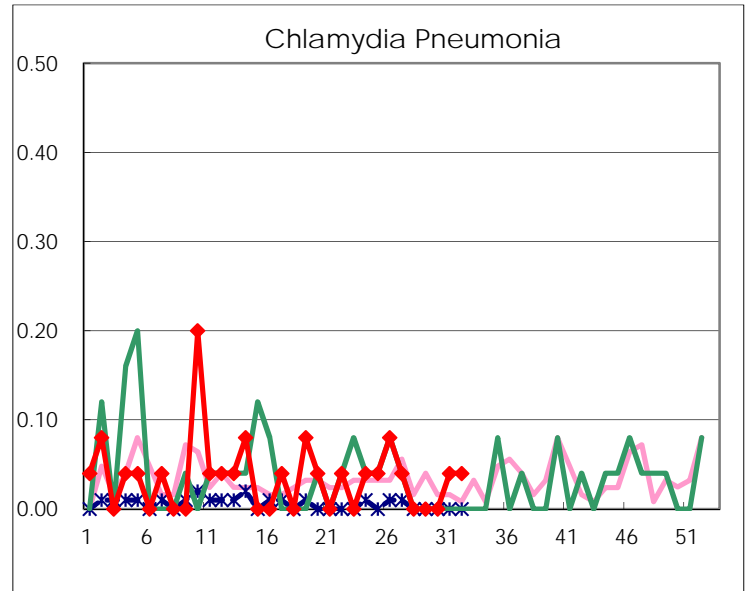
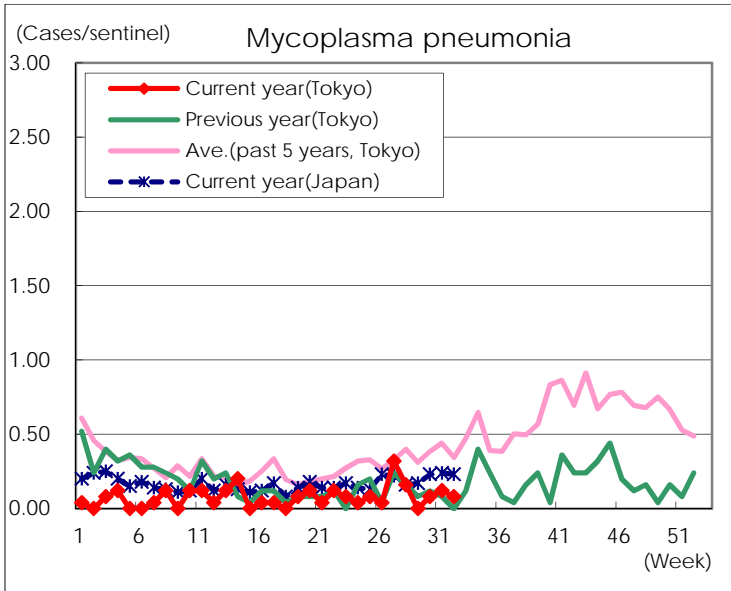
( Blank means 0. )

# Disease Trend Graph (weekly reported cases per sentinel in comparison)









Number of sentinel facilities for weekly reporting		
Types of sentinels	Number of sentinels	Sentinels having reported
Pediatric	264	229
Influenza	419	338
Ophthalmic	39	33
Specially-designated	25	25