

**23 August 2018 / Number 33**

## Surveillance System in Tokyo, Japan

The infectious diseases which all physicians must report

All physicians must report to health centers the incidence of the diseases which are shown at page one. Health centers electronically report the individual cases to Tokyo Metropolitan Infectious Disease Surveillance Center.

The infectious diseases required to be reported by the sentinels

The numbers of patients who visit the sentinel clinics or hospitals during a week are reported to health centers in Tokyo. And they electronically report the numbers to Tokyo Metropolitan Infectious Disease Surveillance Center. We have about 500 sentinel clinics and hospitals in Tokyo.

Tokyo Metropolitan Institute of Public Health

TEL:81-3-3363-3213 FAX:81-3-5332-7365

e-mail:[www@tokyo-eiken.go.jp](mailto:www@tokyo-eiken.go.jp)

URL:[idsc.tokyo-eiken.go.jp/](http://idsc.tokyo-eiken.go.jp/)

---

Number of patients with the diseases which all physicians must report

Category	Diseases	Tokyo					Japan	
		30th	31st	32nd	33rd	Cum 2018	33rd	Cum 2018
I	Ebola hemorrhagic fever							
	Crimean-Congo hemorrhagic fever							
	Smallpox							
	South American hemorrhagic fever							
	Plague							
	Marburg disease							
	Lassa fever							
II	Acute poliomyelitis							
	Tuberculosis	55	52	65	63	2,084	312	13,517
	Diphtheria							
	Severe Acute Respiratory Syndrome(SARS)							
	Middle East Respiratory Syndrome (MERS)							
	Avian influenza H5N1							
	Avian influenza H7N9							
III	Cholera							3
	Shigellosis	1				26		100
	Enterohemorrhagic Escherichia coli infection	39	20	24	30	260	195	2,143
	Typhoid fever		1			7		21
	Paratyphoid fever			1		7		13
IV	Hepatitis E	1	1	3	3	59	5	279
	West Nile fever							
	Hepatitis A	6	8	14	11	315	18	665
	Echinococcosis							7
	Yellow fever							
	Psittacosis					1		5
	Omsk hemorrhagic fever							
	Relapsing fever							5
	Kyasanur forest disease							
	Q fever			2		2		3
	Rabies							
	Coccidioidomycosis							2
	Monkeypox							
	Zika virus infection							
	Severe Fever with Thrombocytopenia Syndrome						1	54
	Hemorrhagic fever with renal syndrome							
	Western equine encephalitis							
	Tick-borne encephalitis							1
	Anthrax							
	Chikungunya fever							1
	Scrub typhus(Tsutsugamushi disease)					4	2	96
	Dengue fever		1	2	1	27	5	90
	Eastern equine encephalitis							
	Avian influenza (excluding H5N1 and H7N9)							
	Nipah virus infection							
	Japanese spotted fever						12	138
	Japanese encephalitis							
	Hantavirus pulmonary syndrome							
	Herpes B virus infection							
	Glanders							
	Brucellosis							2
	Venezuelan equine encephalitis							
	Hendra virus infection							
	Epidemic typhus							
Botulism					1		2	
Malaria		1	1		9	2	30	
Tularemia								
Lyme disease							6	
Lyssavirus infection(excluding rabies)								
Rift valley fever								
Melioidosis					1		2	
Legionellosis	6		4	5	78	32	1,188	
Leptospirosis					1		3	
Rocky mountain spotted fever								

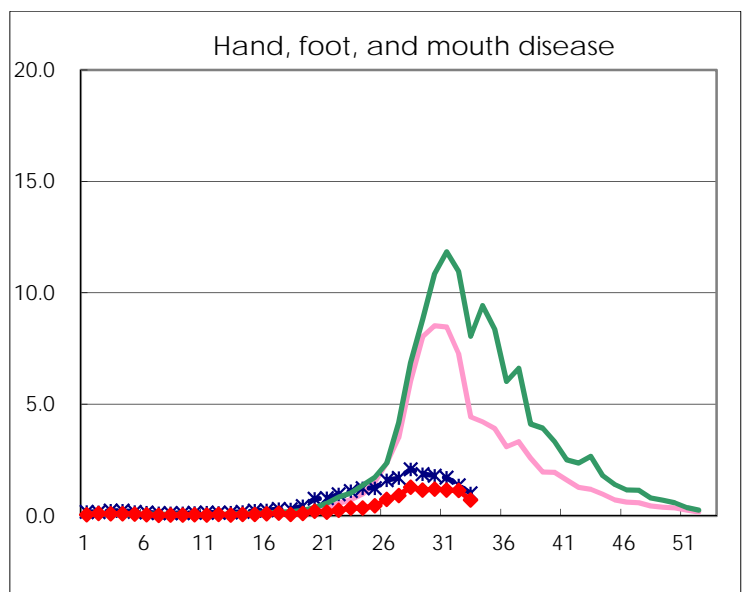
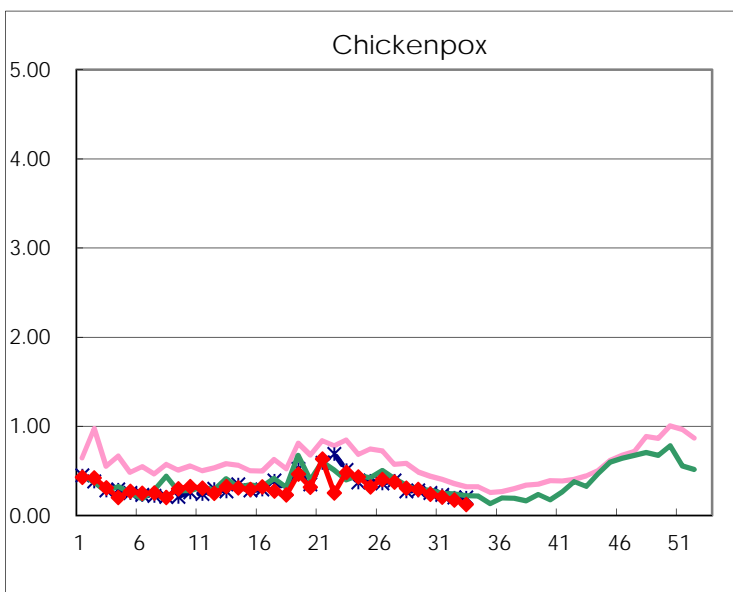
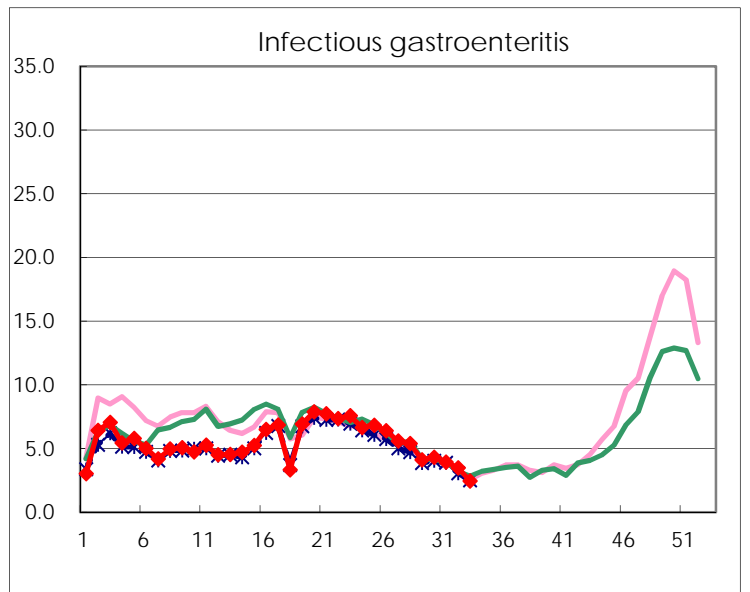
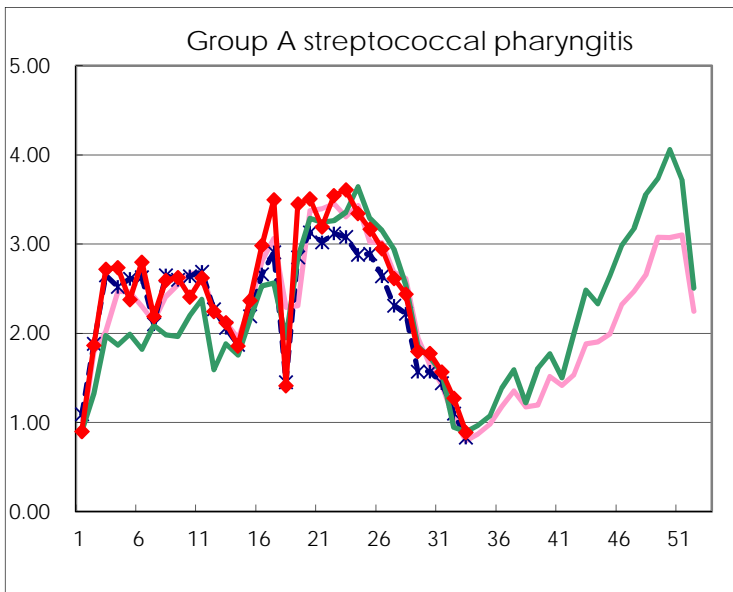
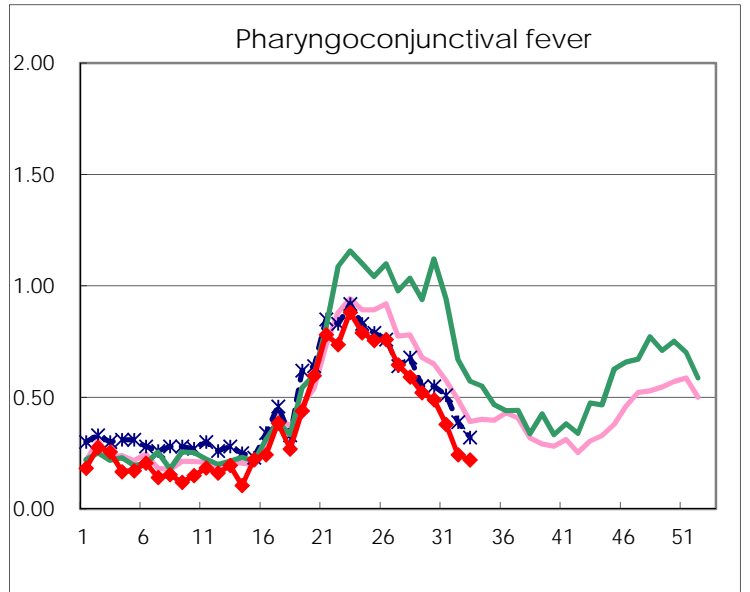
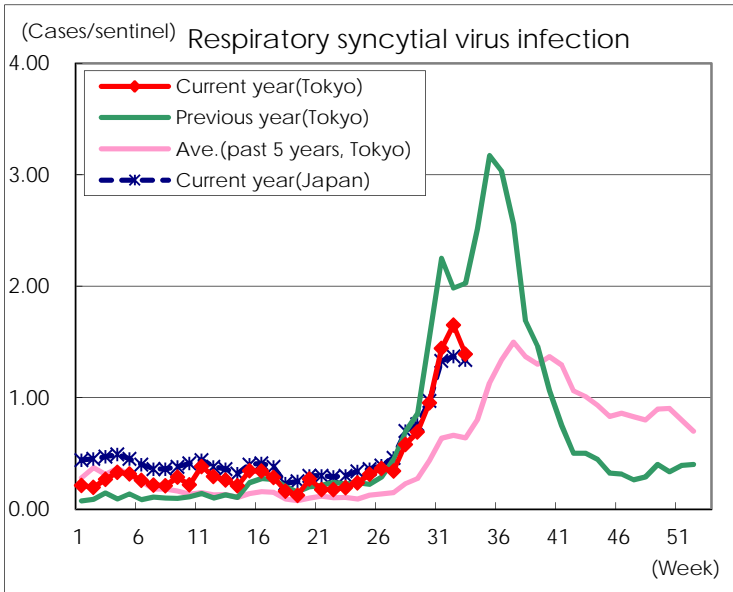
Category	Diseases	Tokyo					Japan	
		30th	31st	32nd	33rd	Cum 2018	33rd	Cum 2018
V	Amebiasis	3	1	3	2	101	13	527
	Viral hepatitis(excluding hepatitis A and E)	1	1	3	1	32		138
	CRE infection	5	3	4	4	116	43	1,173
	Acute Flaccid Paralysis (excluding Acute poliomyelitis)					2		20
	Acute encephalitis(excluding JE and WNE)	1	2	2		45	8	467
	Cryptosporidiosis					3		11
	Creutzfeldt-Jakob disease		2		1	16	2	134
	Severe invasive streptococcal infections(TSLs)	1				60	12	468
	Acquired immunodeficiency syndrome (AIDS)	11	9	13	4	255	15	819
	Giardiasis	1				12		48
	Invasive <i>Haemophilus influenzae</i> disease	1	1		1	22	4	311
	Invasive meningococcal disease					6		25
	Invasive pneumococcal disease	3	6	3	4	265	23	2,249
	Varicella (limited to hospitalized case)	1	2	3	1	38	5	273
	Congenital rubella syndrome							
	Syphilis	32	32	35	22	1,088	67	4,221
	Disseminated cryptococcosis		1			13	2	116
	Tetanus	1				2	3	73
	Vancomycin-resistant <i>S. aureus</i> infection							
	Vancomycin-resistant <i>Enterococcus</i> infection					3	2	45
	Pertussis	96	84	99	67	845	154	4,791
Rubella	4	7	17	9	49	43	184	
Measles					14	1	201	
MDRA infection					3		13	

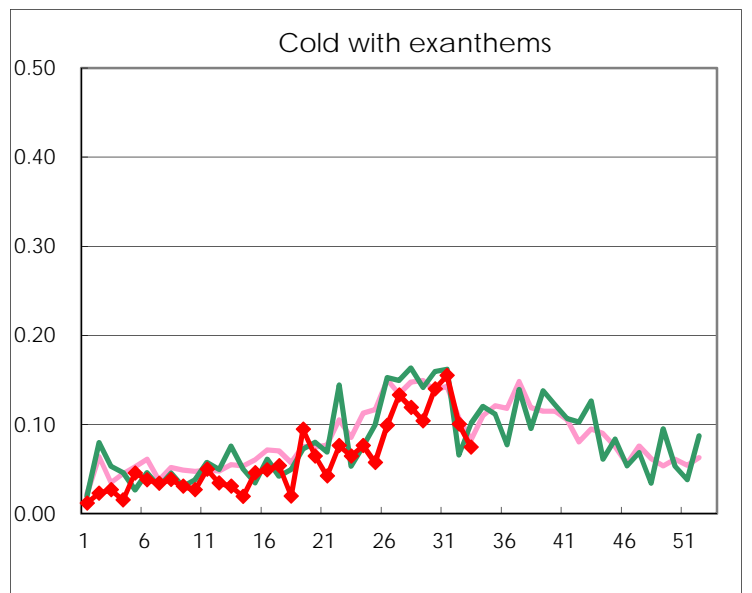
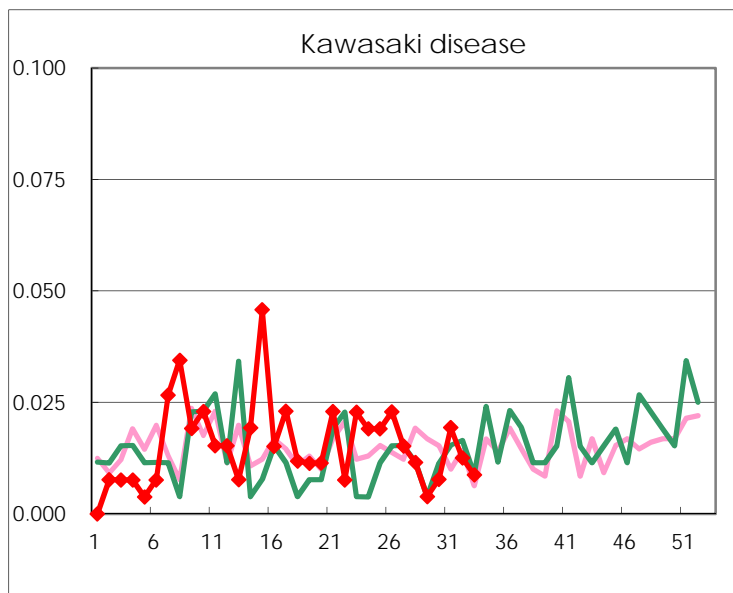
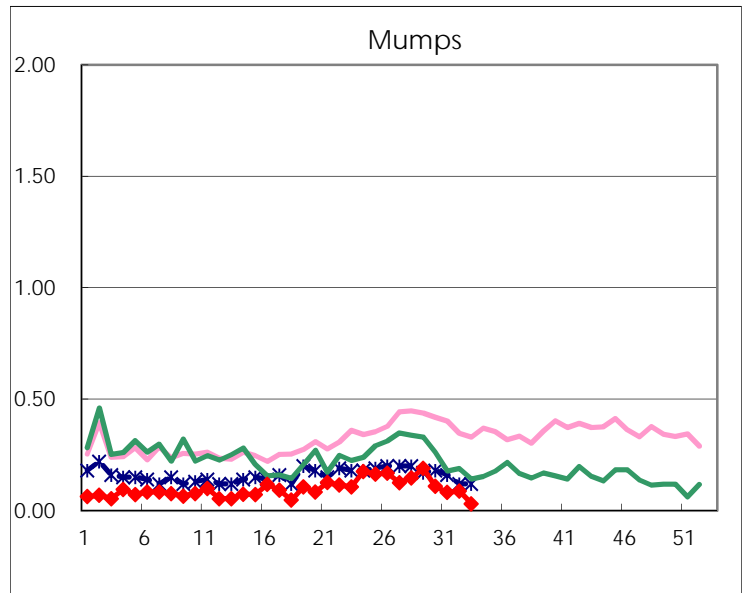
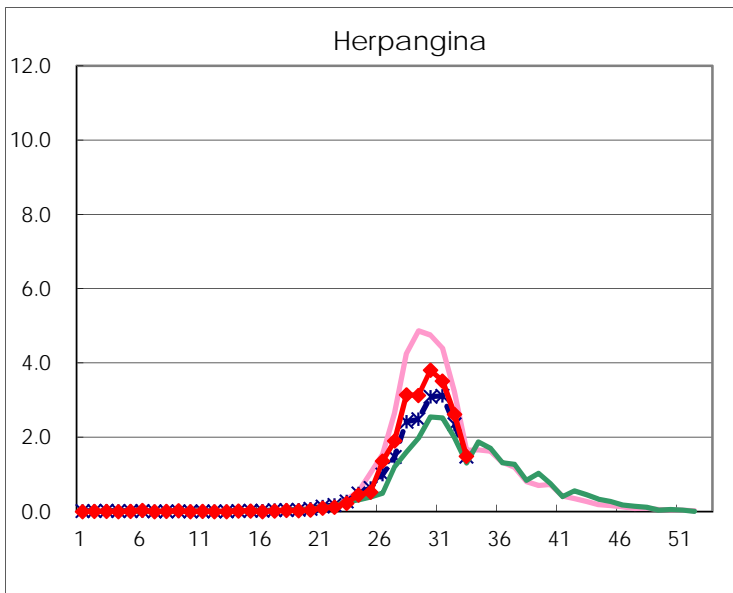
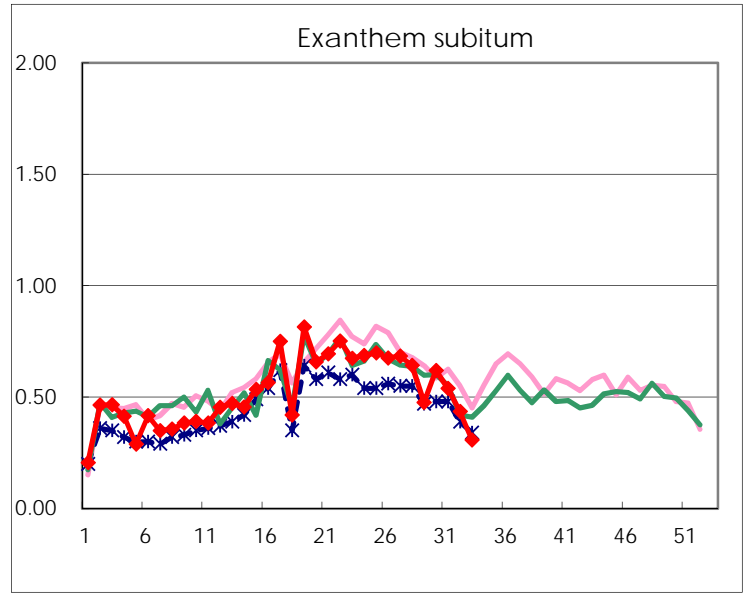
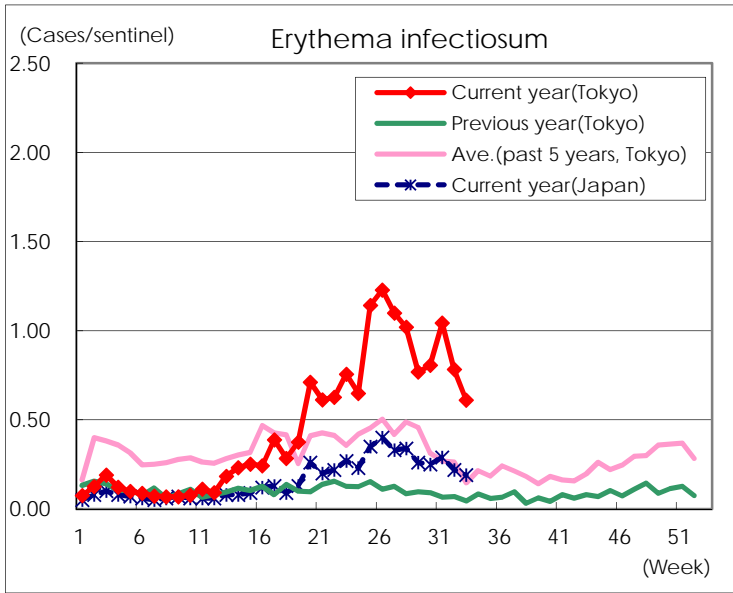
Number of patients with the diseases to be reported  
by the designated clinics and hospitals

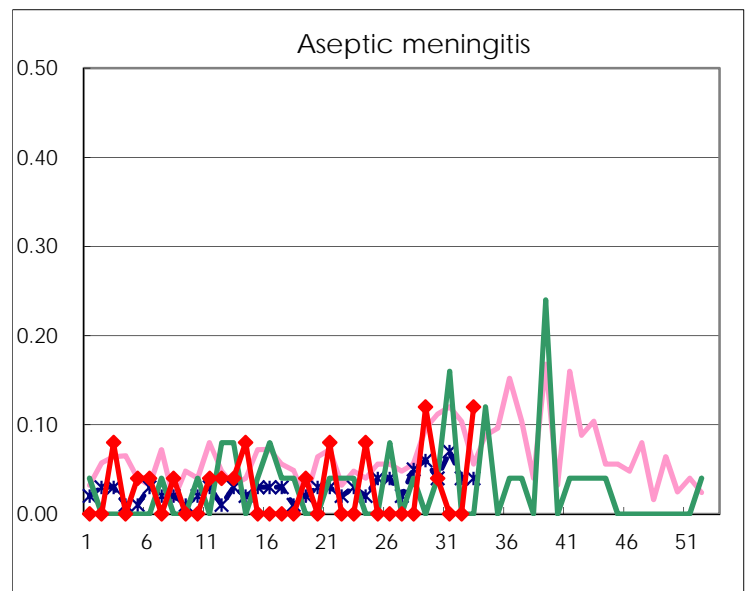
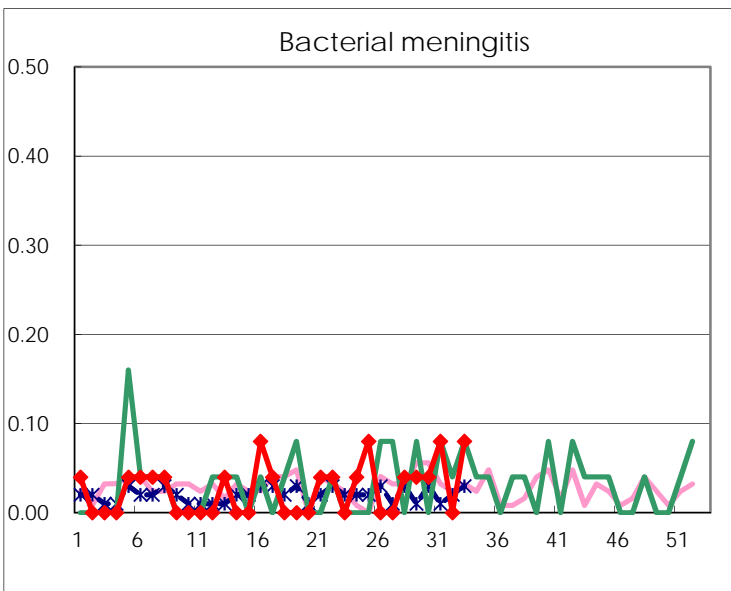
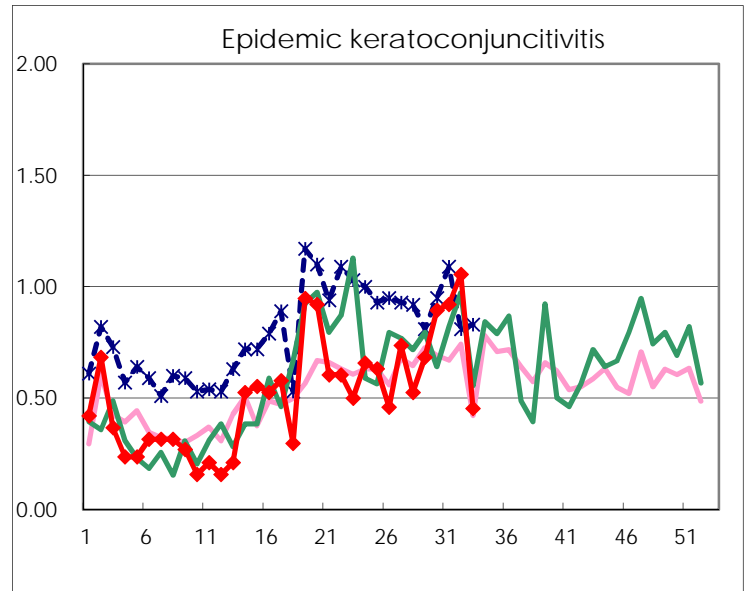
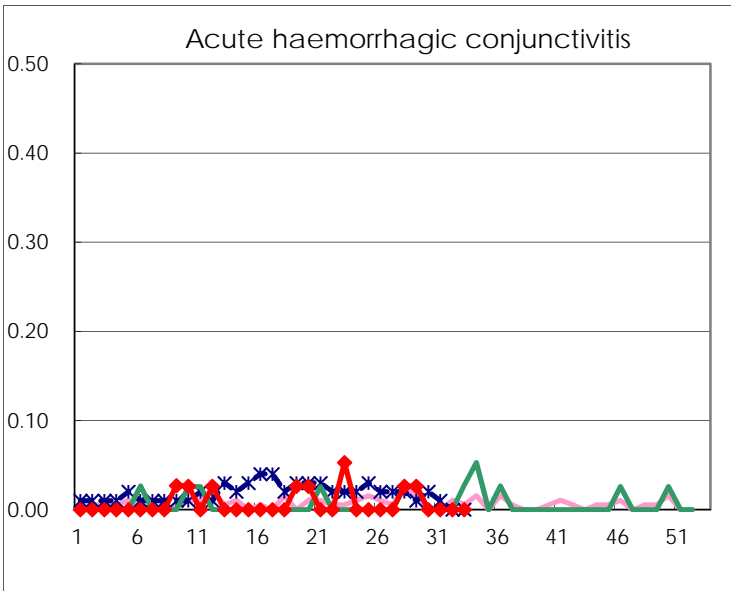
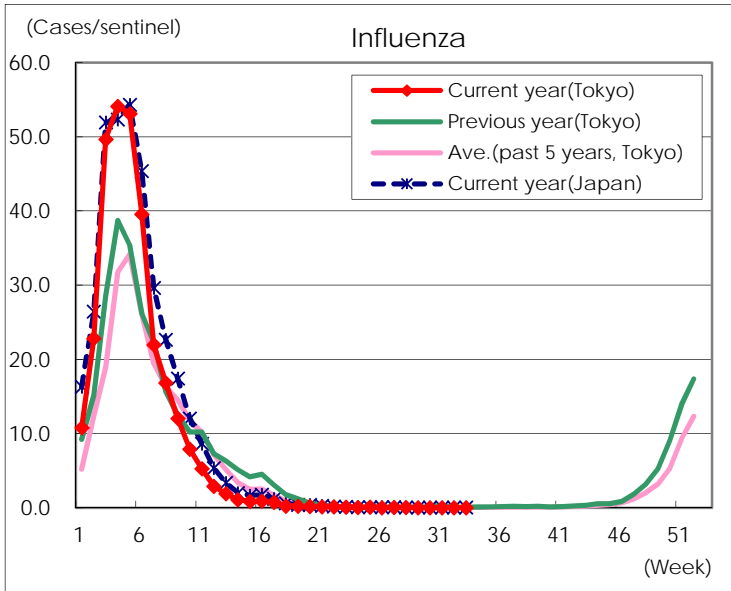
Diseases	Tokyo				
	30th	31st	32nd	33rd	/sentinel
Respiratory syncytial virus infection	245	372	395	317	1.39
Pharyngoconjunctival fever	126	98	58	50	0.22
Group A streptococcal pharyngitis	456	404	304	202	0.89
Infectious gastroenteritis	1,104	1,013	832	557	2.44
Chickenpox	61	53	41	28	0.12
Hand, foot, and mouth disease	308	298	270	160	0.70
Erythema infectiosum	207	269	187	139	0.61
Exanthem subitum	159	139	104	70	0.31
Herpangina	978	908	627	340	1.49
Mumps	28	21	21	7	0.03
Kawasaki disease	2	5	3	2	0.01
Cold with exanthems	36	40	24	17	0.07
Influenza	8	10	9	12	0.03
Acute hemorrhagic conjunctivitis					
Epidemic keratoconjunctivitis	34	35	38	15	0.45
Bacterial meningitis	1	2		2	0.08
Aseptic meningitis	1			3	0.12
<i>Mycoplasma pneumoniae</i>	2	3	2	5	0.20
Chlamydial pneumonia (excluding psittacosis)		1	1	1	0.04
Infectious gastroenteritis (only by Rotavirus)					
Influenza-Associated Hospitalizations	2				

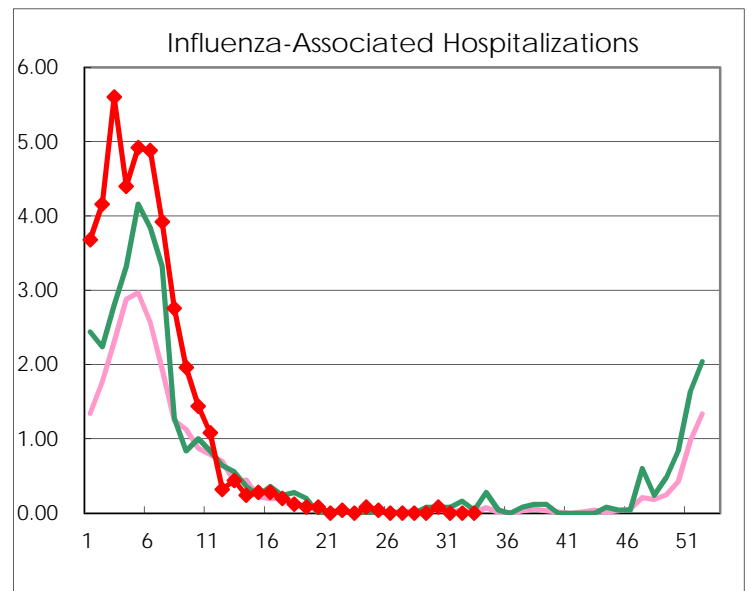
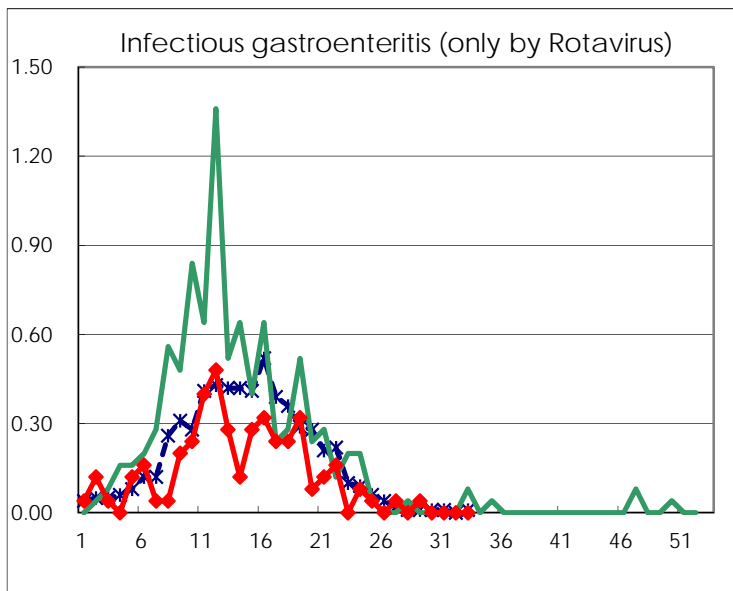
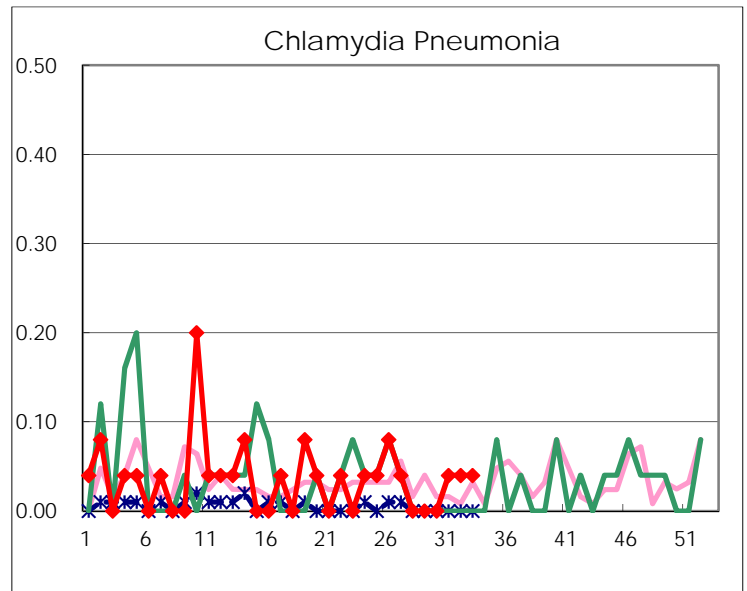
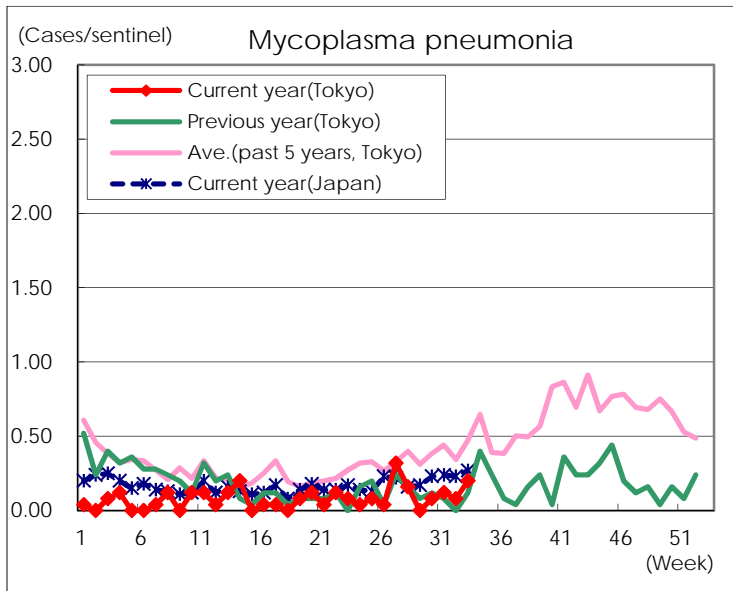
( Blank means 0. )

# Disease Trend Graph (weekly reported cases per sentinel in comparison)









Number of sentinel facilities for weekly reporting		
Types of sentinels	Number of sentinels	Sentinels having reported
Pediatric	264	228
Influenza	419	378
Ophthalmic	39	33
Specially-designated	25	25