

## 30 August 2018 / Number 34

### Surveillance System in Tokyo, Japan

The infectious diseases which all physicians must report

All physicians must report to health centers the incidence of the diseases which are shown at page one. Health centers electronically report the individual cases to Tokyo Metropolitan Infectious Disease Surveillance Center.

The infectious diseases required to be reported by the sentinels

The numbers of patients who visit the sentinel clinics or hospitals during a week are reported to health centers in Tokyo. And they electronically report the numbers to Tokyo Metropolitan Infectious Disease Surveillance Center. We have about 500 sentinel clinics and hospitals in Tokyo.

Tokyo Metropolitan Institute of Public Health

TEL:81-3-3363-3213 FAX:81-3-5332-7365

e-mail:[www@tokyo-eiken.go.jp](mailto:www@tokyo-eiken.go.jp)

URL:[idsc.tokyo-eiken.go.jp/](http://idsc.tokyo-eiken.go.jp/)

---

Number of patients with the diseases which all physicians must report

Category	Diseases	Tokyo					Japan	
		31st	32nd	33rd	34th	Cum 2018	34th	Cum 2018
I	Ebola hemorrhagic fever							
	Crimean-Congo hemorrhagic fever							
	Smallpox							
	South American hemorrhagic fever							
	Plague							
	Marburg disease							
	Lassa fever							
II	Acute poliomyelitis							
	Tuberculosis	55	67	64	57	2,151	332	13,921
	Diphtheria							
	Severe Acute Respiratory Syndrome(SARS)							
	Middle East Respiratory Syndrome (MERS)							
	Avian influenza H5N1							
	Avian influenza H7N9							
III	Cholera							3
	Shigellosis				1	27	7	107
	Enterohemorrhagic Escherichia coli infection	20	24	30	27	287	211	2,371
	Typhoid fever	1			1	8	1	22
	Paratyphoid fever		1			7		13
IV	Hepatitis E	1	3	3	1	60	6	285
	West Nile fever							
	Hepatitis A	8	14	11	12	327	20	692
	Echinococcosis							7
	Yellow fever							
	Psittacosis					1		5
	Omsk hemorrhagic fever							
	Relapsing fever							5
	Kyasanur forest disease							
	Q fever		2			2		3
	Rabies							
	Coccidioidomycosis							2
	Monkeypox							
	Zika virus infection							
	Severe Fever with Thrombocytopenia Syndrome						2	56
	Hemorrhagic fever with renal syndrome							
	Western equine encephalitis							
	Tick-borne encephalitis							1
	Anthrax							
	Chikungunya fever							1
	Scrub typhus(Tsutsugamushi disease)					4	1	97
	Dengue fever	1	2	1	4	31	9	100
	Eastern equine encephalitis							
	Avian influenza (excluding H5N1 and H7N9)							
	Nipah virus infection							
	Japanese spotted fever						13	153
	Japanese encephalitis							
	Hantavirus pulmonary syndrome							
	Herpes B virus infection							
	Glanders							
	Brucellosis						1	3
	Venezuelan equine encephalitis							
	Hendra virus infection							
Epidemic typhus								
Botulism					1		2	
Malaria	1	1			9	1	32	
Tularemia								
Lyme disease							6	
Lyssavirus infection(excluding rabies)								
Rift valley fever								
Melioidosis					1		2	
Legionellosis		4	5	7	85	33	1,225	
Leptospirosis					1		4	
Rocky mountain spotted fever								

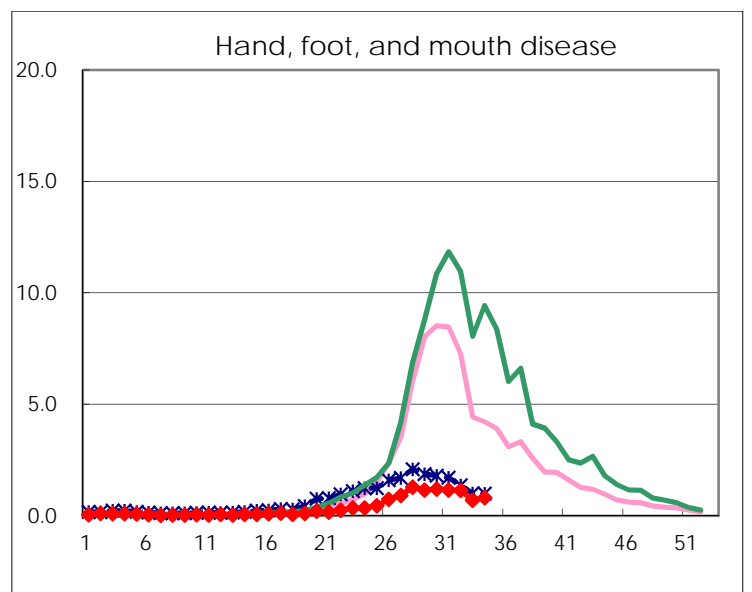
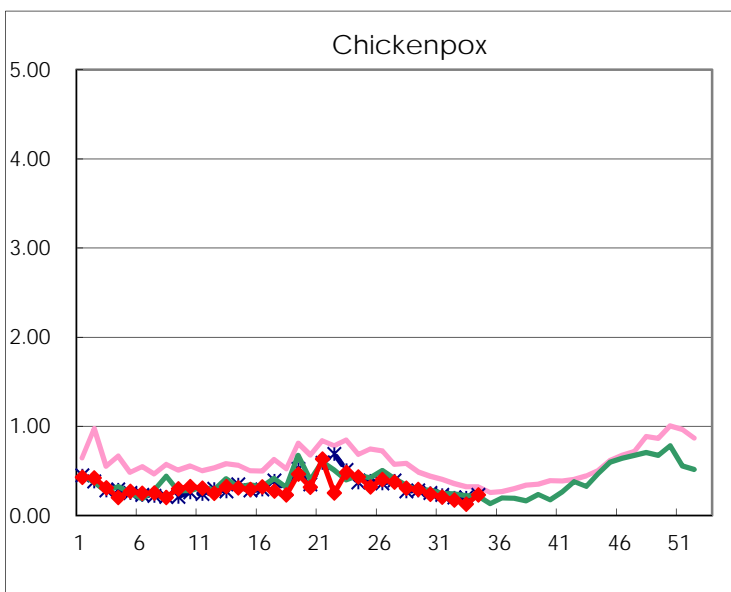
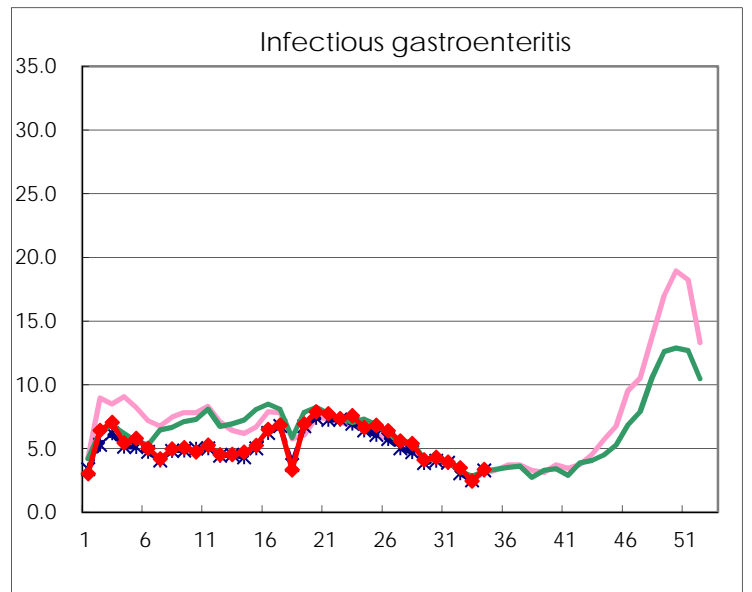
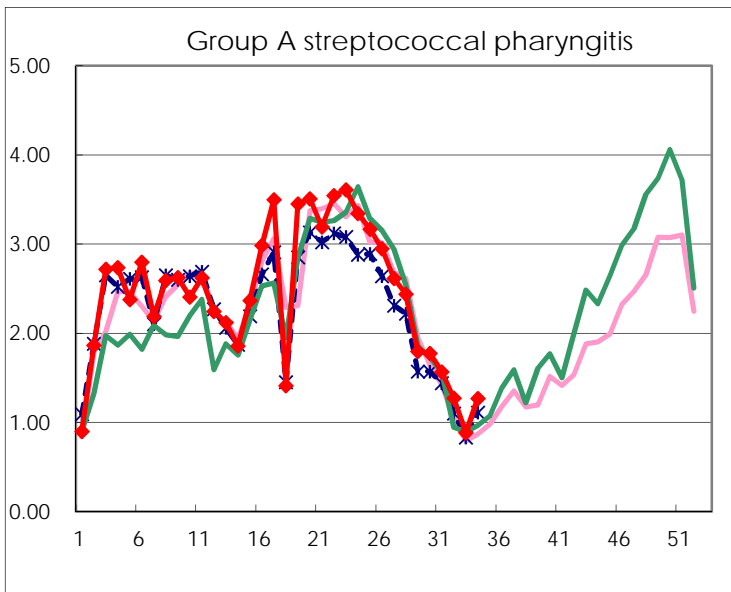
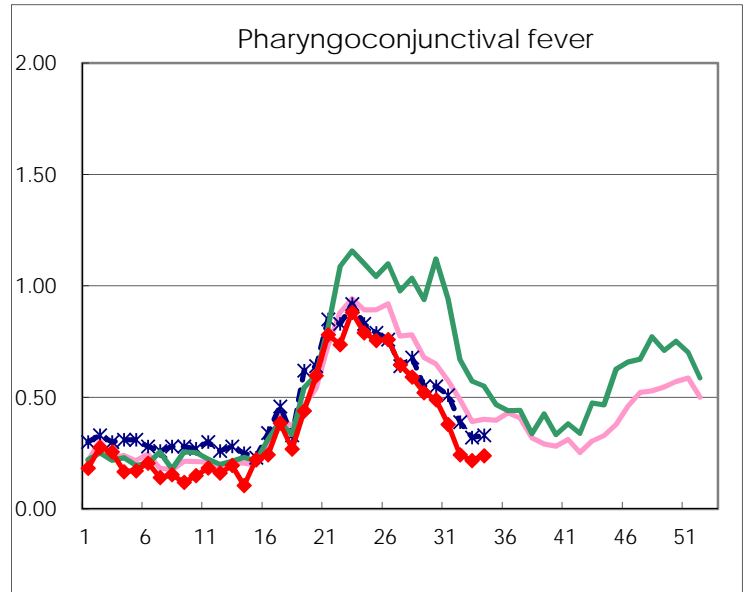
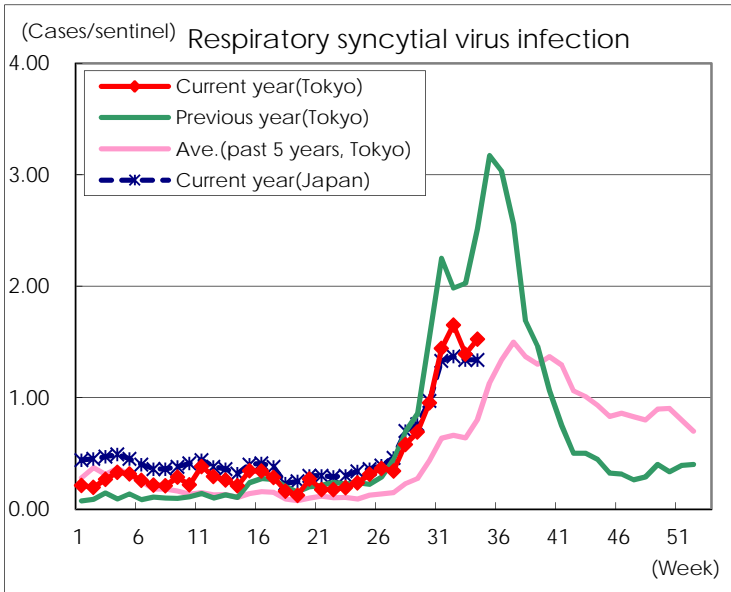
Category	Diseases	Tokyo					Japan	
		31st	32nd	33rd	34th	Cum 2018	34th	Cum 2018
V	Amebiasis	1	3	2	1	102	11	539
	Viral hepatitis(excluding hepatitis A and E)	1	4	2	1	35	5	146
	CRE infection	4	5	5	6	125	43	1,238
	Acute Flaccid Paralysis (excluding Acute poliomyelitis)				1	3	5	26
	Acute encephalitis(excluding JE and WNE)	2	2			45	4	477
	Cryptosporidiosis					3		11
	Creutzfeldt-Jakob disease	2		1		16	1	138
	Severe invasive streptococcal infections(TSLs)			1		61	7	478
	Acquired immunodeficiency syndrome (AIDS)	9	13	6	6	263	17	848
	Giardiasis					12	1	49
	Invasive <i>Haemophilus influenzae</i> disease	1		1	1	23	4	321
	Invasive meningococcal disease					6		25
	Invasive pneumococcal disease	6	3	4	4	269	25	2,289
	Varicella (limited to hospitalized case)	2	3	1	2	40	4	285
	Congenital rubella syndrome							
	Syphilis	32	34	22	32	1,119	94	4,376
	Disseminated cryptococcosis	1			1	14	5	125
	Tetanus					2	1	74
	Vancomycin-resistant <i>S. aureus</i> infection							
	Vancomycin-resistant <i>Enterococcus</i> infection				1	4	2	48
	Pertussis	84	99	67	81	927	260	5,139
Rubella	7	17	10	22	72	84	273	
Measles					14		202	
MDRA infection					3		13	

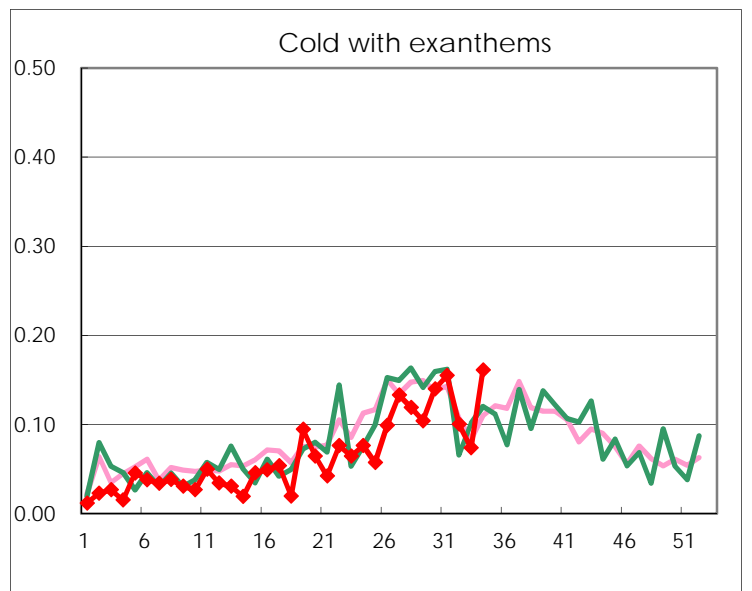
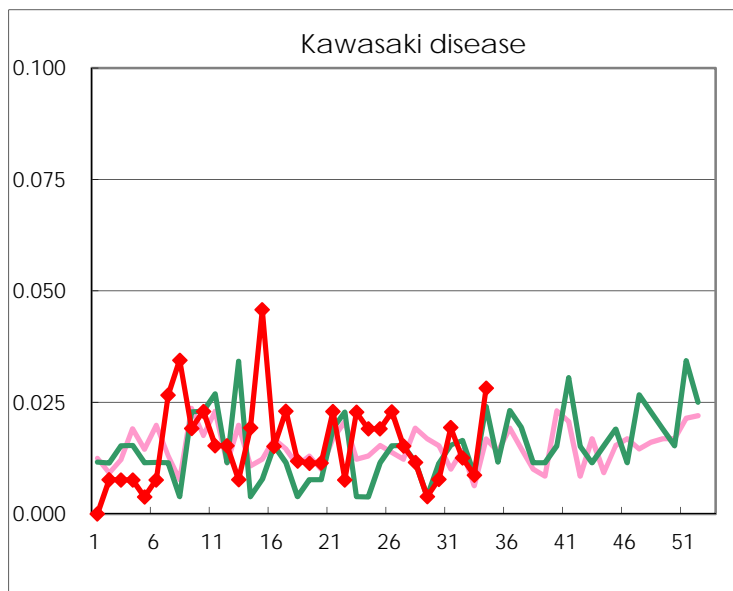
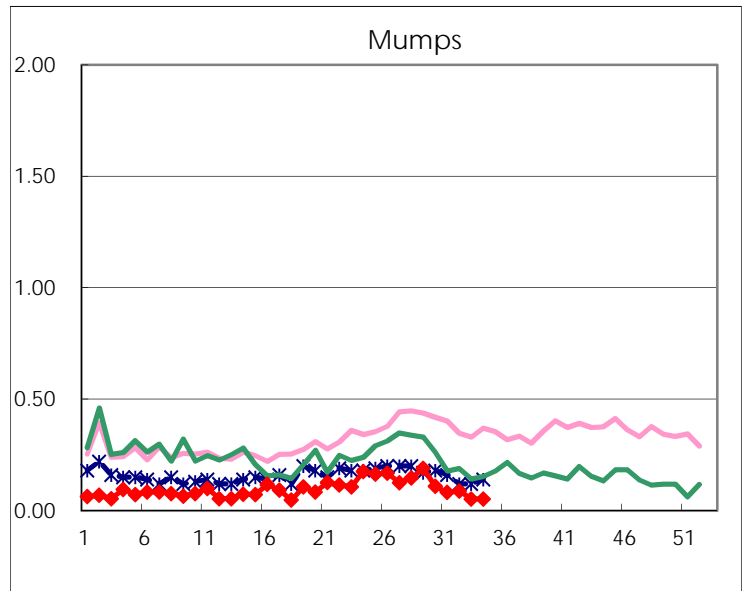
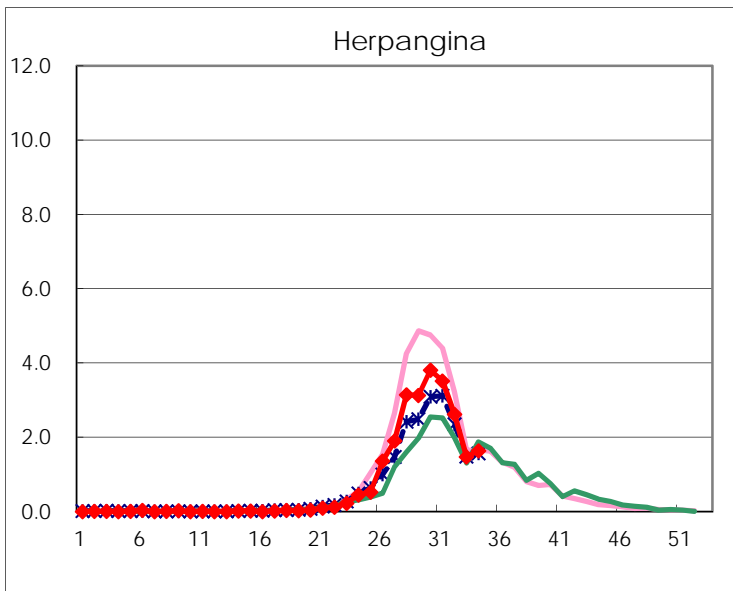
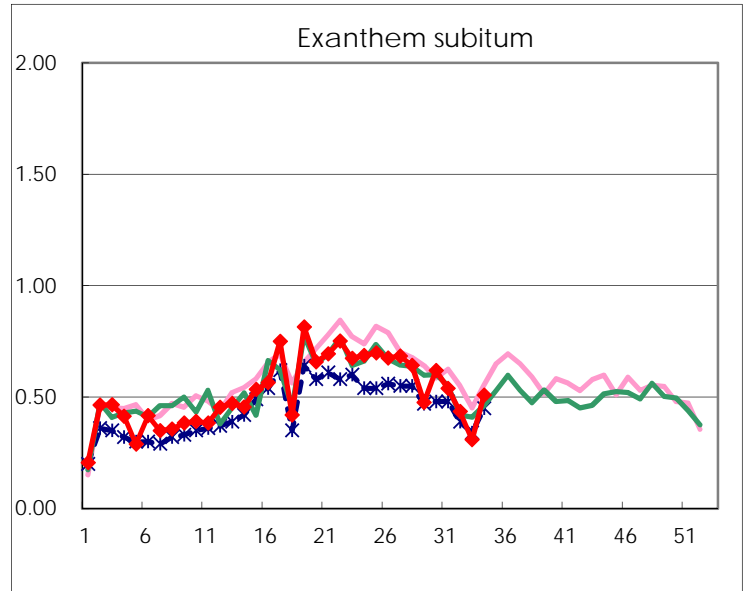
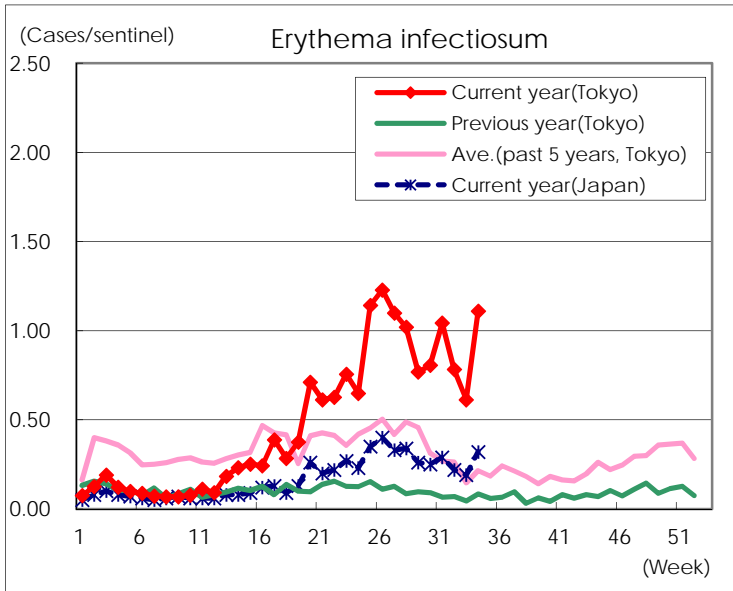
Number of patients with the diseases to be reported  
by the designated clinics and hospitals

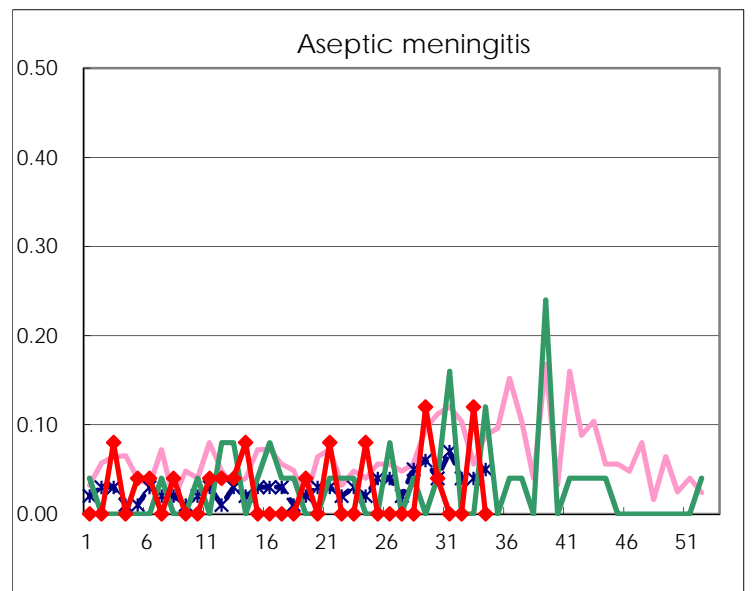
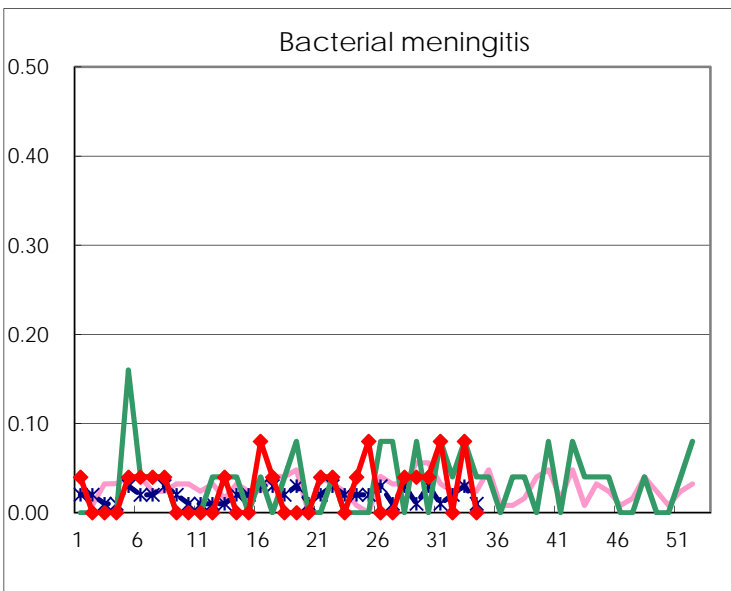
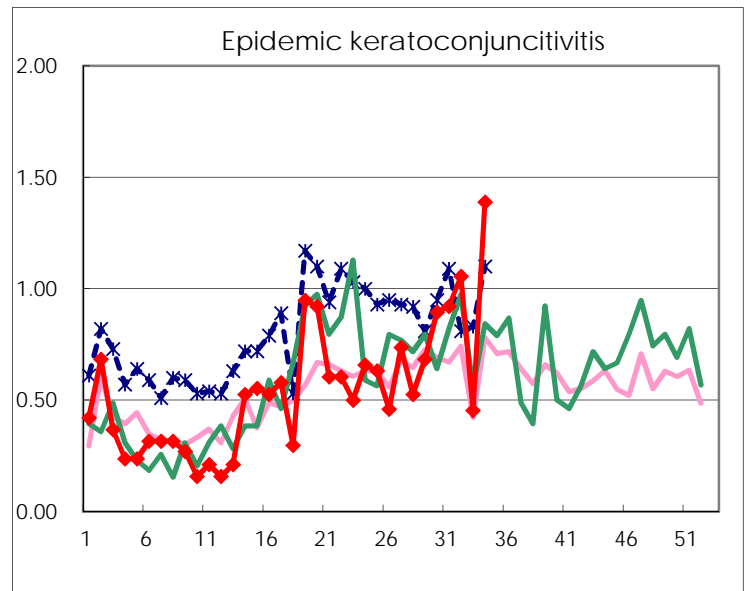
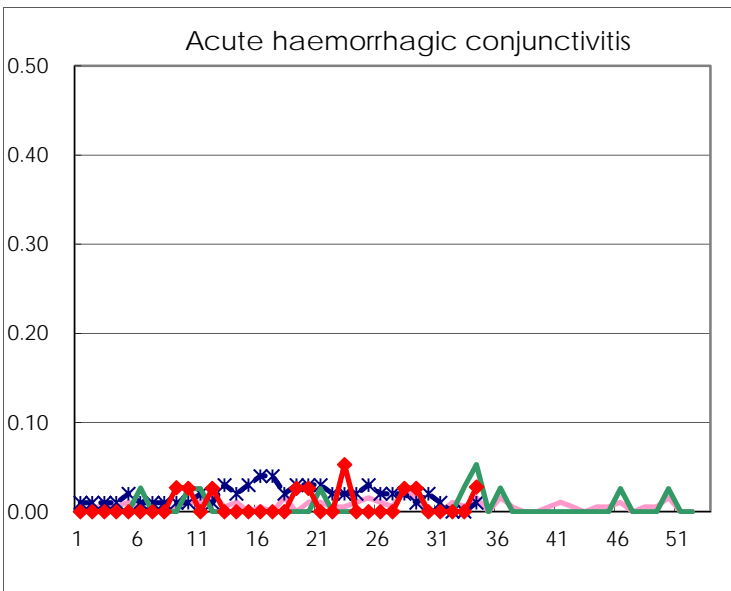
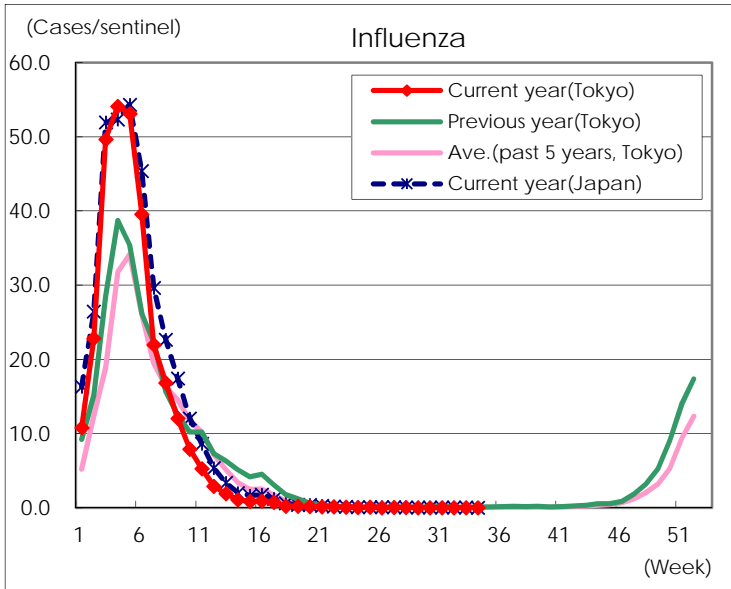
Diseases	Tokyo				
	31st	32nd	33rd	34th	/sentinel
Respiratory syncytial virus infection	372	395	320	378	1.52
Pharyngoconjunctival fever	98	58	50	59	0.24
Group A streptococcal pharyngitis	404	304	203	314	1.27
Infectious gastroenteritis	1,013	832	559	831	3.35
Chickenpox	53	41	29	57	0.23
Hand, foot, and mouth disease	298	270	160	201	0.81
Erythema infectiosum	269	187	141	275	1.11
Exanthem subitum	139	104	71	126	0.51
Herpangina	908	627	340	406	1.64
Mumps	21	21	12	13	0.05
Kawasaki disease	5	3	2	7	0.03
Cold with exanthems	40	24	17	40	0.16
Influenza	10	9	12	4	0.01
Acute hemorrhagic conjunctivitis				1	0.03
Epidemic keratoconjunctivitis	35	38	15	50	1.39
Bacterial meningitis	2		2		
Aseptic meningitis			3		
<i>Mycoplasma pneumoniae</i>	3	2	5	5	0.20
Chlamydial pneumonia (excluding psittacosis)	1	1	1		
Infectious gastroenteritis (only by Rotavirus)					
Influenza-Associated Hospitalizations				1	0.04

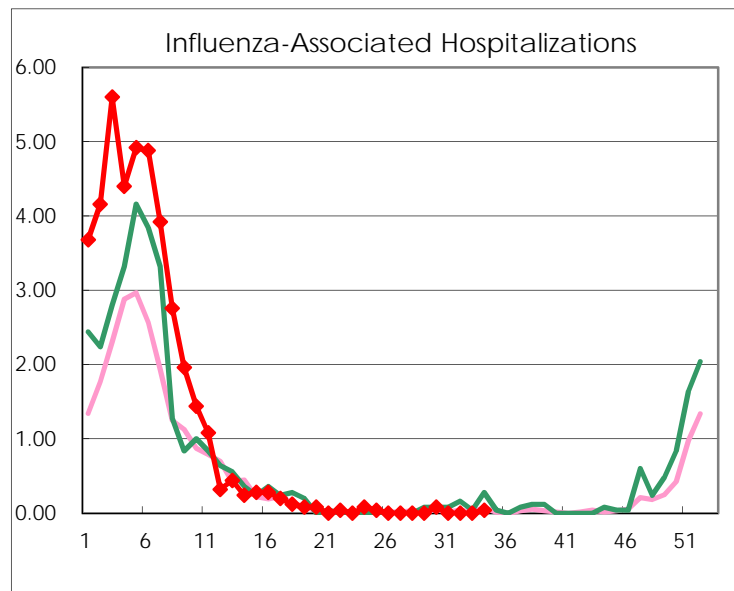
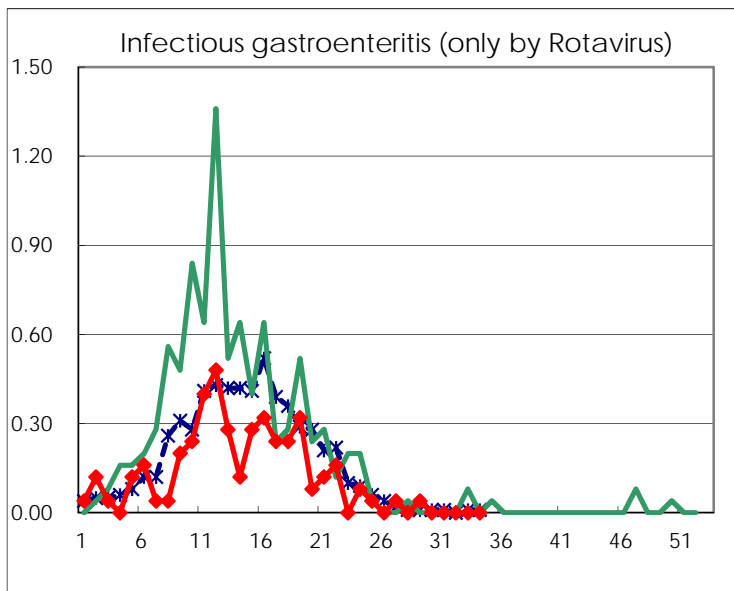
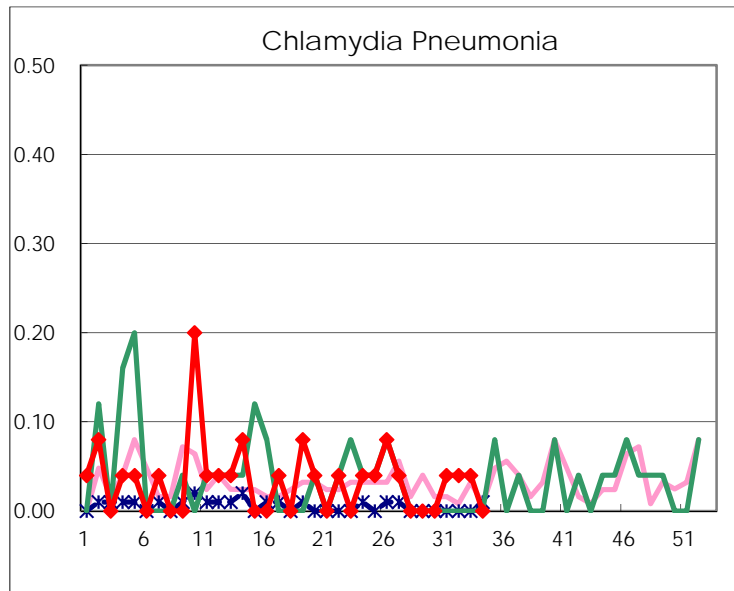
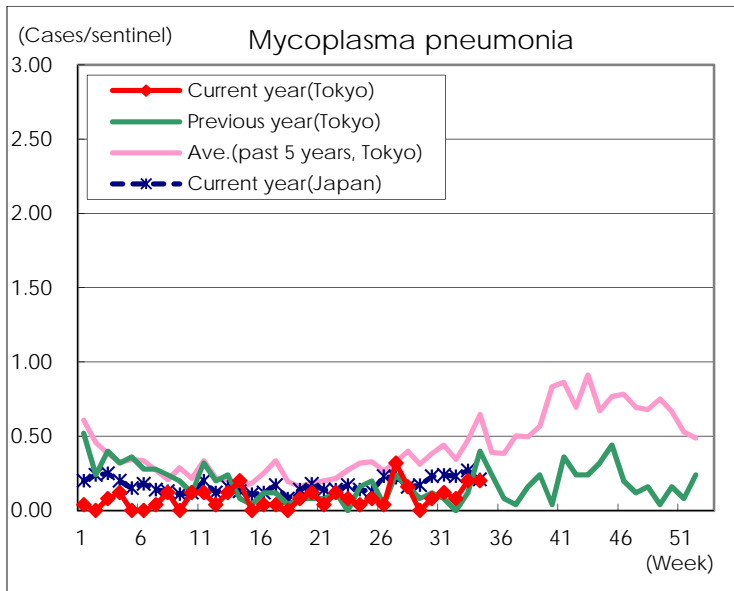
( Blank means 0. )

# Disease Trend Graph (weekly reported cases per sentinel in comparison)









Number of sentinel facilities for weekly reporting		
Types of sentinels	Number of sentinels	Sentinels having reported
Pediatric	264	248
Influenza	419	398
Ophthalmic	39	36
Specially-designated	25	25