

6 September 2018 / Number 35

Surveillance System in Tokyo, Japan

The infectious diseases which all physicians must report

All physicians must report to health centers the incidence of the diseases which are shown at page one. Health centers electronically report the individual cases to Tokyo Metropolitan Infectious Disease Surveillance Center.

The infectious diseases required to be reported by the sentinels

The numbers of patients who visit the sentinel clinics or hospitals during a week are reported to health centers in Tokyo. And they electronically report the numbers to Tokyo Metropolitan Infectious Disease Surveillance Center. We have about 500 sentinel clinics and hospitals in Tokyo.

Tokyo Metropolitan Institute of Public Health

TEL:81-3-3363-3213 FAX:81-3-5332-7365

e-mail:www@tokyo-eiken.go.jp

URL:idsc.tokyo-eiken.go.jp/

Number of patients with the diseases which all physicians must report

Category	Diseases	Tokyo					Japan	
		32nd	33rd	34th	35th	Cum 2018	35th	Cum 2018
I	Ebola hemorrhagic fever							
	Crimean-Congo hemorrhagic fever							
	Smallpox							
	South American hemorrhagic fever							
	Plague							
	Marburg disease							
	Lassa fever							
II	Acute poliomyelitis							
	Tuberculosis	68	67	60	53	2,209	307	14,310
	Diphtheria							
	Severe Acute Respiratory Syndrome(SARS)							
	Middle East Respiratory Syndrome (MERS)							
	Avian influenza H5N1							
	Avian influenza H7N9							
III	Cholera							3
	Shigellosis			1	1	28	4	111
	Enterohemorrhagic Escherichia coli infection	24	30	27	37	324	259	2,681
	Typhoid fever			1		8		22
	Paratyphoid fever	1				7	1	14
IV	Hepatitis E	3	3	1	1	61	6	291
	West Nile fever							
	Hepatitis A	14	11	12	5	332	12	706
	Echinococcosis							8
	Yellow fever							
	Psittacosis					1		5
	Omsk hemorrhagic fever							
	Relapsing fever							5
	Kyasanur forest disease							
	Q fever	2				2		3
	Rabies							
	Coccidioidomycosis							2
	Monkeypox							
	Zika virus infection							
	Severe Fever with Thrombocytopenia Syndrome						1	58
	Hemorrhagic fever with renal syndrome							
	Western equine encephalitis							
	Tick-borne encephalitis							1
	Anthrax							
	Chikungunya fever						2	3
	Scrub typhus(Tsutsugamushi disease)					4		97
	Dengue fever	2	1	4	2	33	8	109
	Eastern equine encephalitis							
	Avian influenza (excluding H5N1 and H7N9)							
	Nipah virus infection							
	Japanese spotted fever						8	163
	Japanese encephalitis							
	Hantavirus pulmonary syndrome							
	Herpes B virus infection							
	Glanders							
	Brucellosis							3
	Venezuelan equine encephalitis							
	Hendra virus infection							
Epidemic typhus								
Botulism					1		2	
Malaria	1			2	11	2	33	
Tularemia								
Lyme disease							7	
Lyssavirus infection(excluding rabies)								
Rift valley fever								
Melioidosis					1		2	
Legionellosis	4	5	7	5	90	30	1,261	
Leptospirosis					1		5	
Rocky mountain spotted fever								

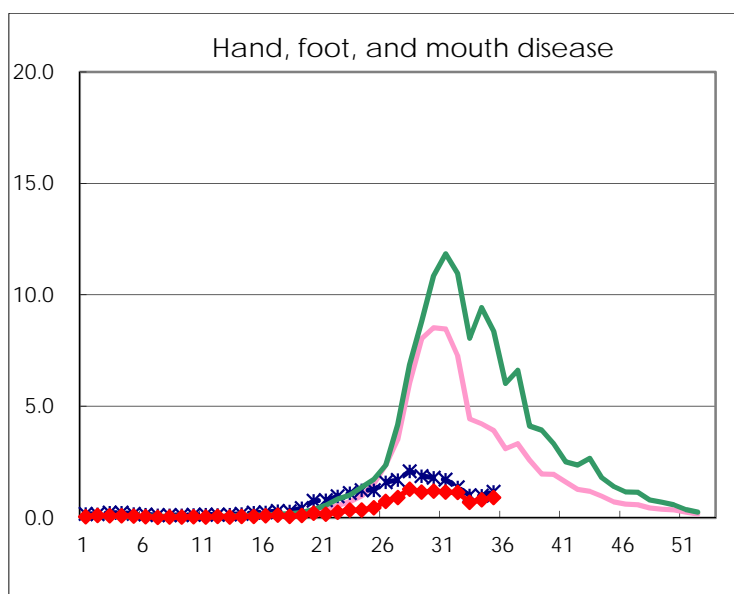
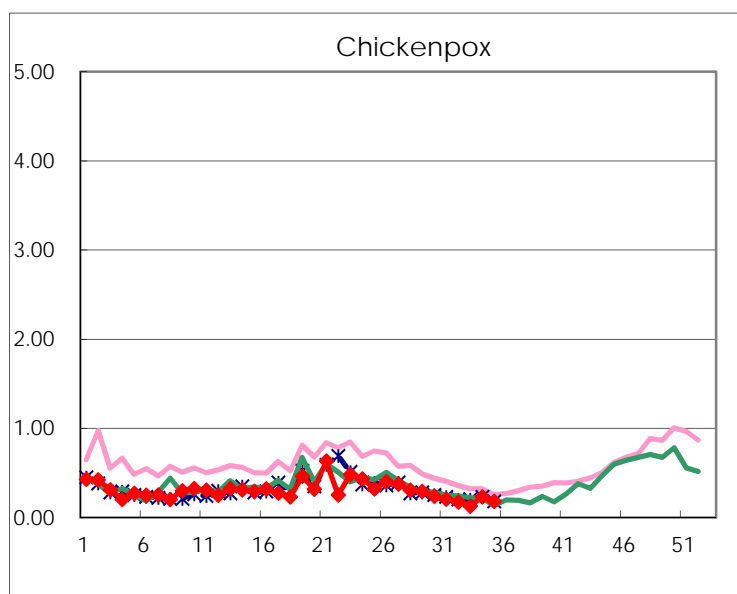
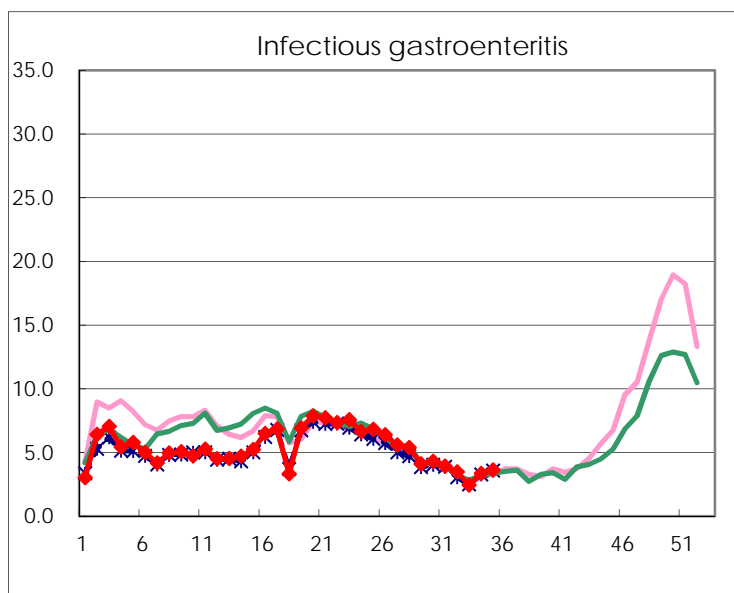
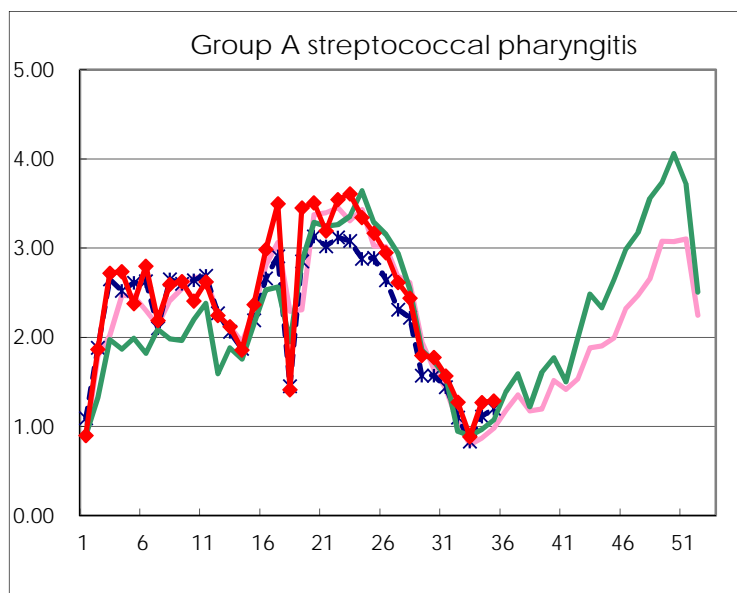
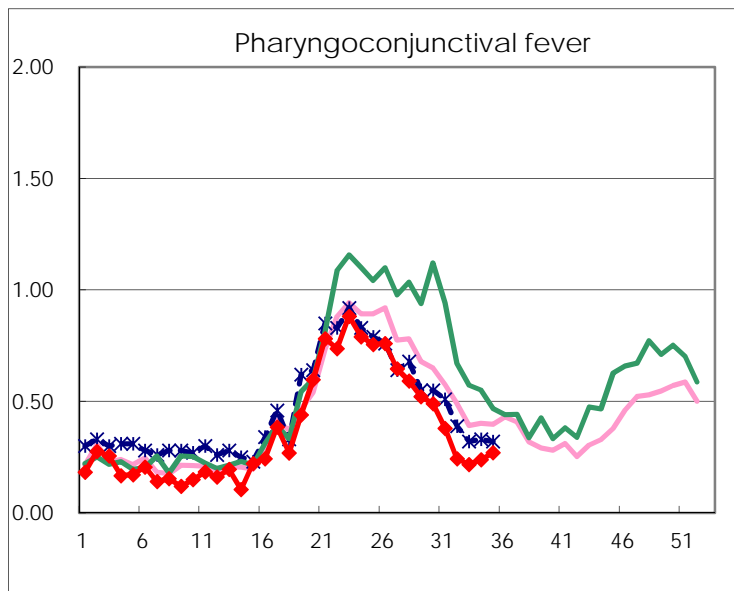
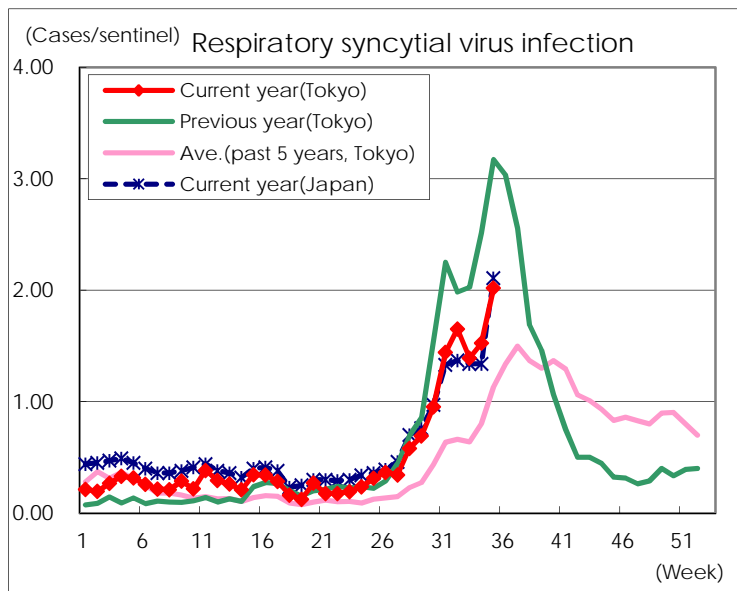
Category	Diseases	Tokyo					Japan	
		32nd	33rd	34th	35th	Cum 2018	35th	Cum 2018
V	Amebiasis	3	2	1	6	108	15	560
	Viral hepatitis(excluding hepatitis A and E)	4	2	1	1	36	2	152
	CRE infection	6	5	6	2	128	40	1,298
	Acute Flaccid Paralysis (excluding Acute poliomyelitis)			1		3	3	29
	Acute encephalitis(excluding JE and WNE)	2			2	47	7	488
	Cryptosporidiosis					3		11
	Creutzfeldt-Jakob disease		1			16	1	141
	Severe invasive streptococcal infections(TSLs)		1		1	62	7	485
	Acquired immunodeficiency syndrome (AIDS)	13	6	6	7	270	13	870
	Giardiasis				2	14	2	52
	Invasive <i>Haemophilus influenzae</i> disease		1	1		23	5	330
	Invasive meningococcal disease					6		25
	Invasive pneumococcal disease	3	4	4	7	276	26	2,327
	Varicella (limited to hospitalized case)	3	1	2	2	42	2	291
	Congenital rubella syndrome							
	Syphilis	34	22	32	35	1,154	83	4,523
	Disseminated cryptococcosis			1		14	1	126
	Tetanus					2	2	77
	Vancomycin-resistant <i>S. aureus</i> infection							
	Vancomycin-resistant <i>Enterococcus</i> infection			1		4	1	50
	Pertussis	99	67	81	74	1,001	243	5,568
Rubella	17	10	25	36	111	75	362	
Measles					14	2	203	
MDRA infection					3	1	14	

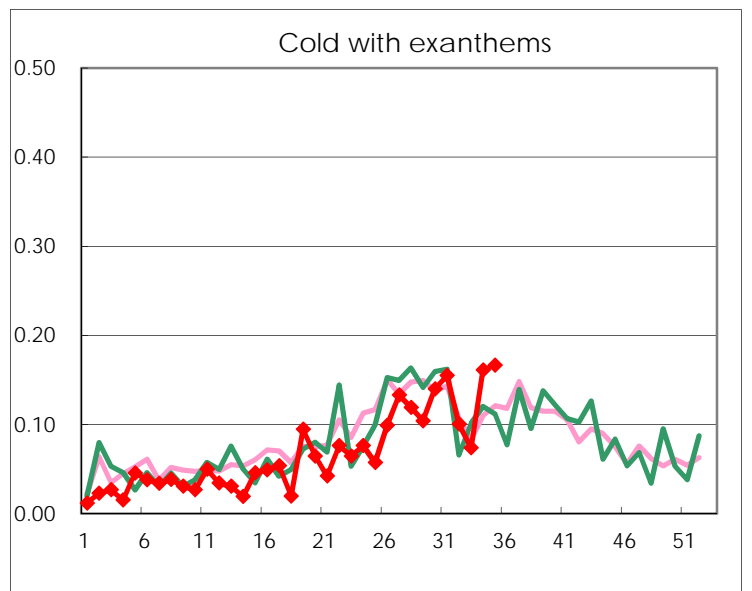
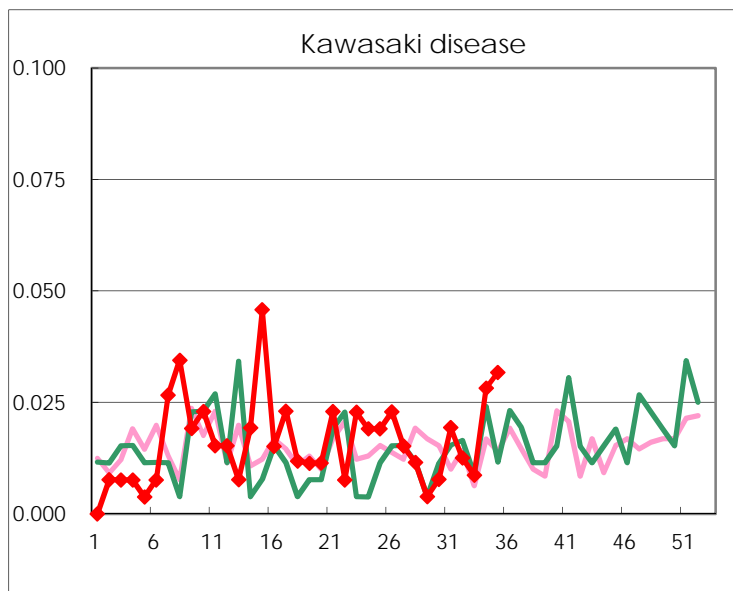
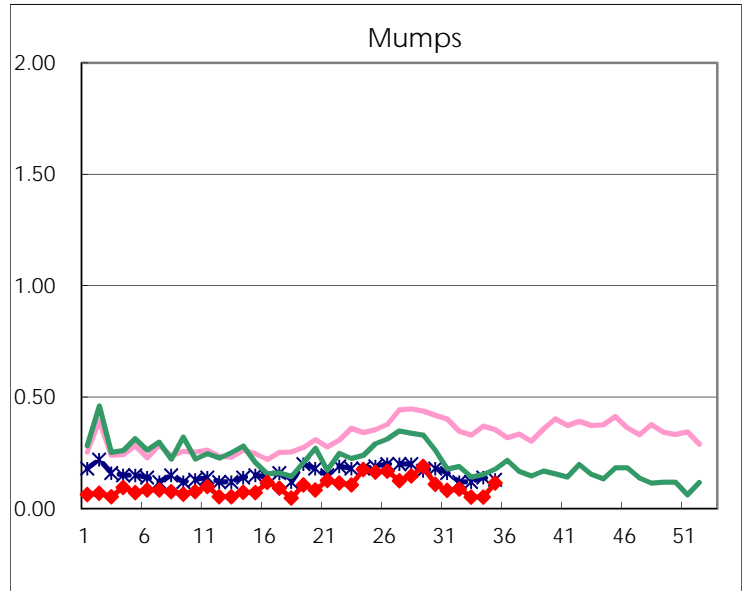
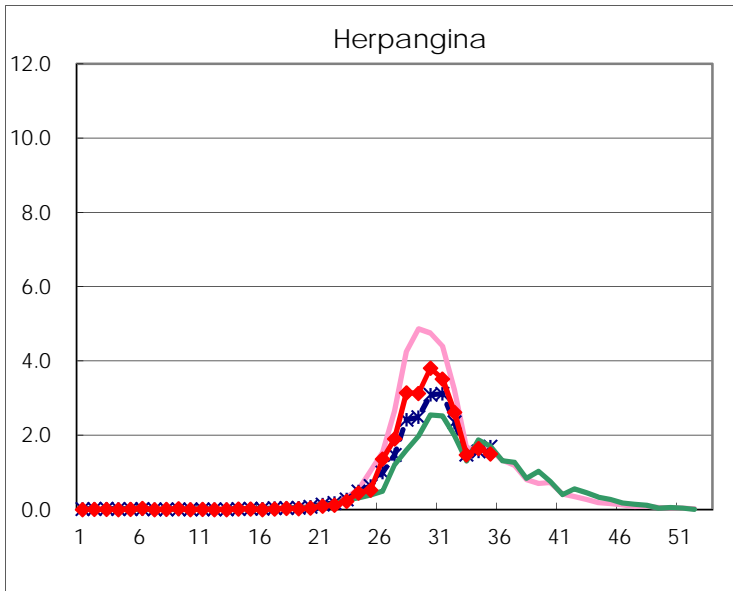
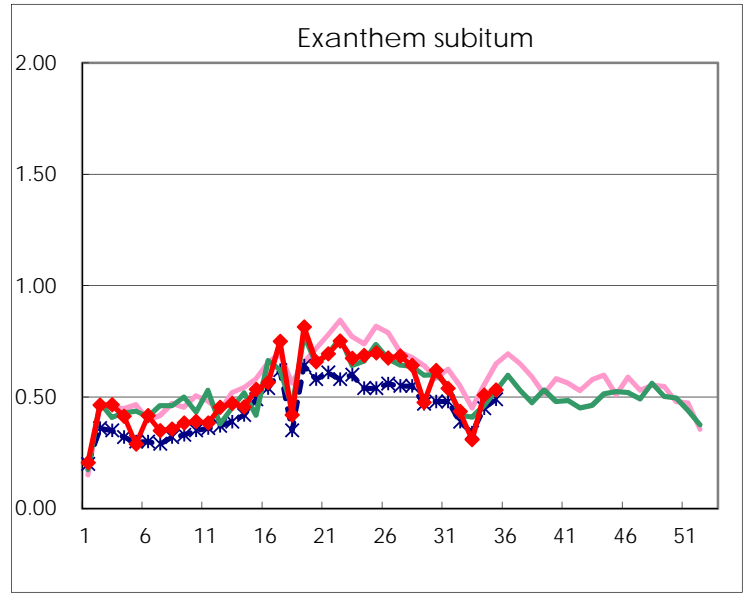
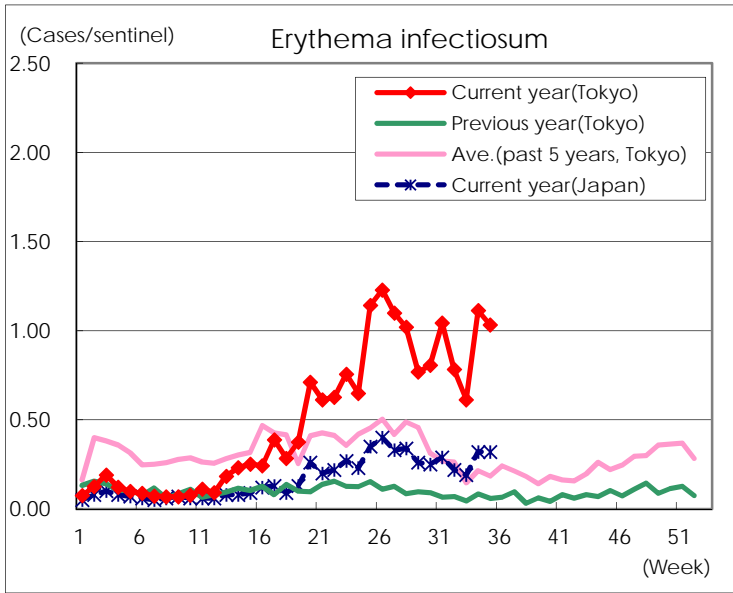
Number of patients with the diseases to be reported
by the designated clinics and hospitals

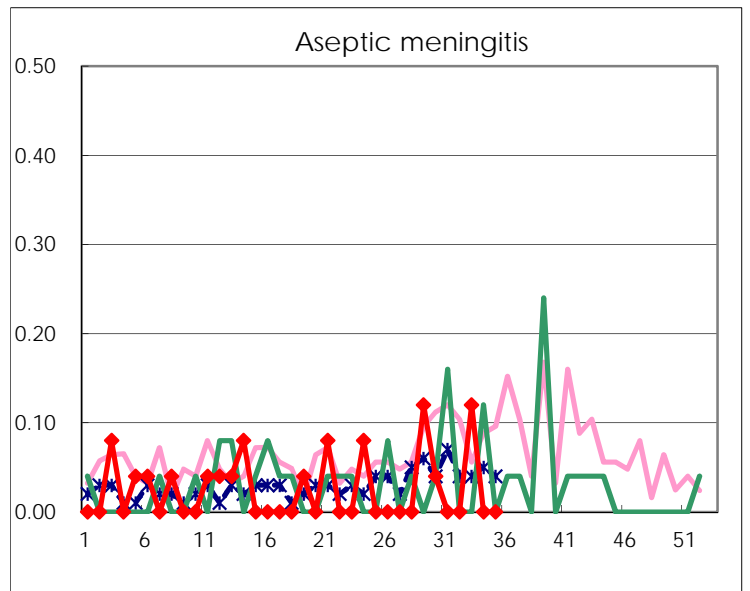
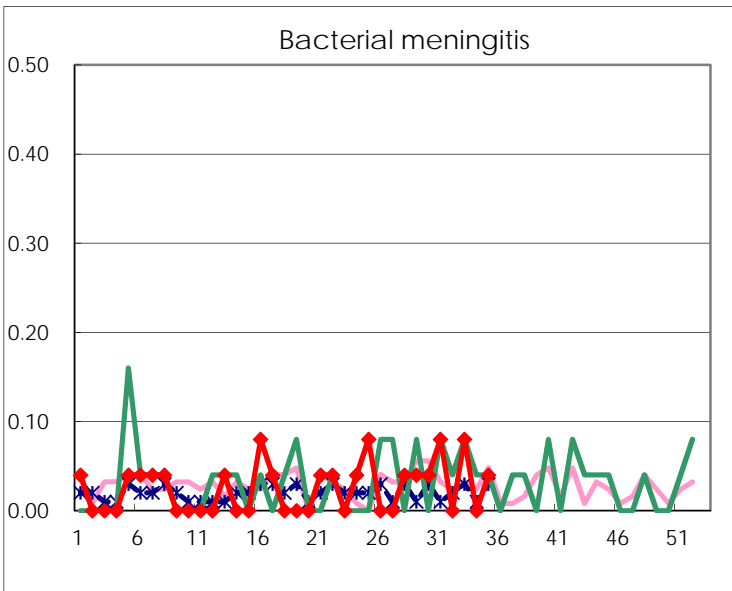
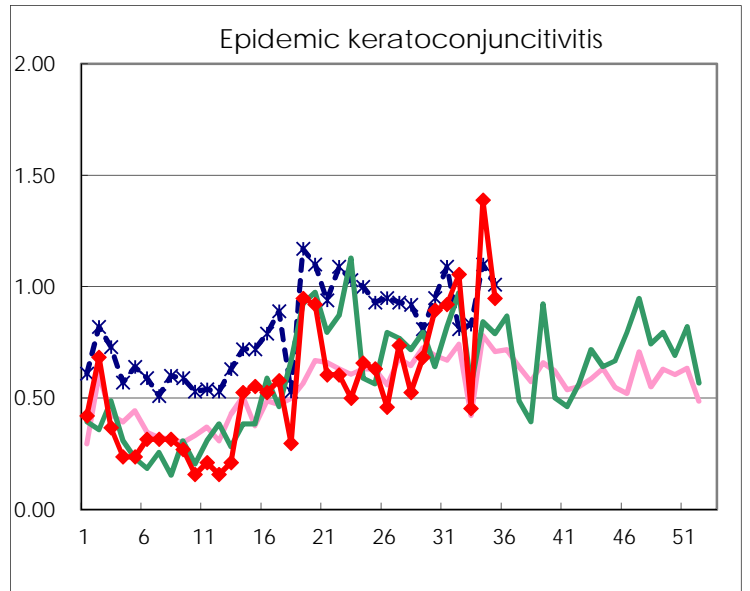
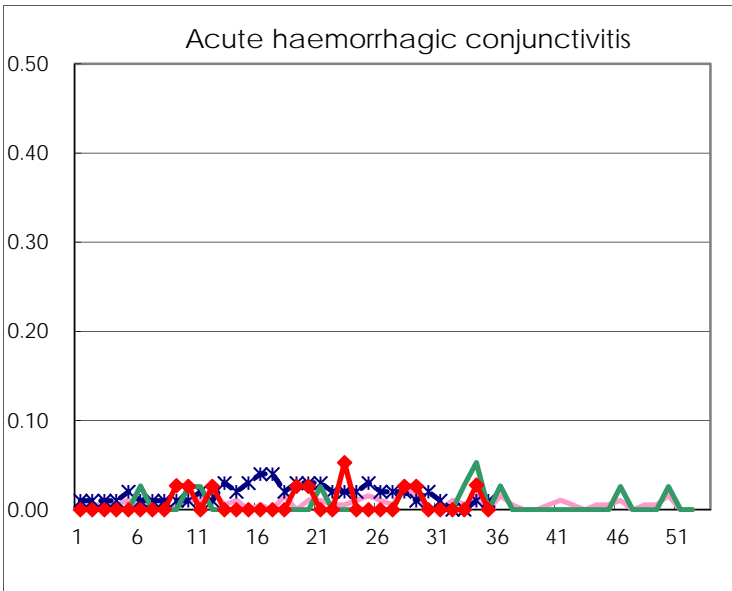
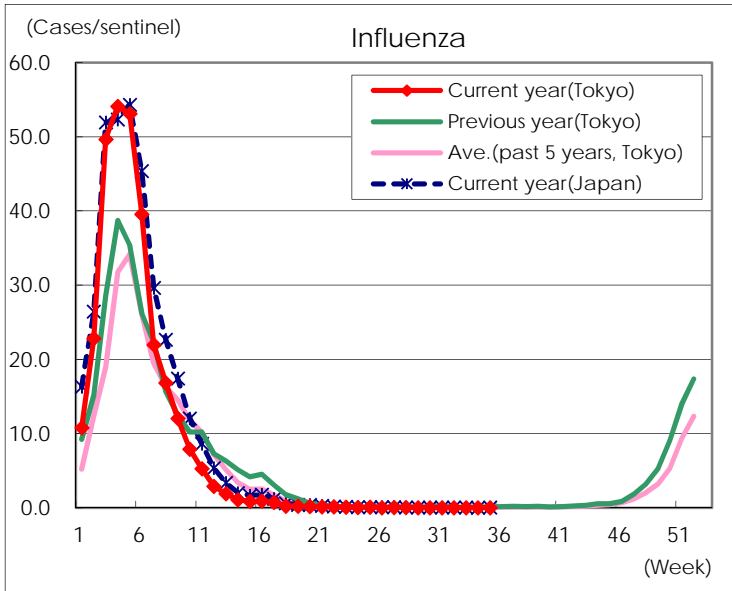
Diseases	Tokyo				
	32nd	33rd	34th	35th	/sentinel
Respiratory syncytial virus infection	395	320	378	509	2.02
Pharyngoconjunctival fever	58	50	59	68	0.27
Group A streptococcal pharyngitis	304	203	314	324	1.29
Infectious gastroenteritis	832	559	832	910	3.61
Chickenpox	41	29	57	45	0.18
Hand, foot, and mouth disease	270	160	201	229	0.91
Erythema infectiosum	187	141	276	260	1.03
Exanthem subitum	104	71	126	134	0.53
Herpangina	627	340	408	378	1.50
Mumps	21	12	13	29	0.12
Kawasaki disease	3	2	7	8	0.03
Cold with exanthems	24	17	40	42	0.17
Influenza	9	12	4	10	0.02
Acute hemorrhagic conjunctivitis			1		
Epidemic keratoconjunctivitis	38	15	50	36	0.95
Bacterial meningitis		2		1	0.04
Aseptic meningitis		3			
<i>Mycoplasma pneumoniae</i>	2	5	5	6	0.24
Chlamydial pneumonia (excluding psittacosis)	1	1		1	0.04
Infectious gastroenteritis (only by Rotavirus)					
Influenza-Associated Hospitalizations			1		

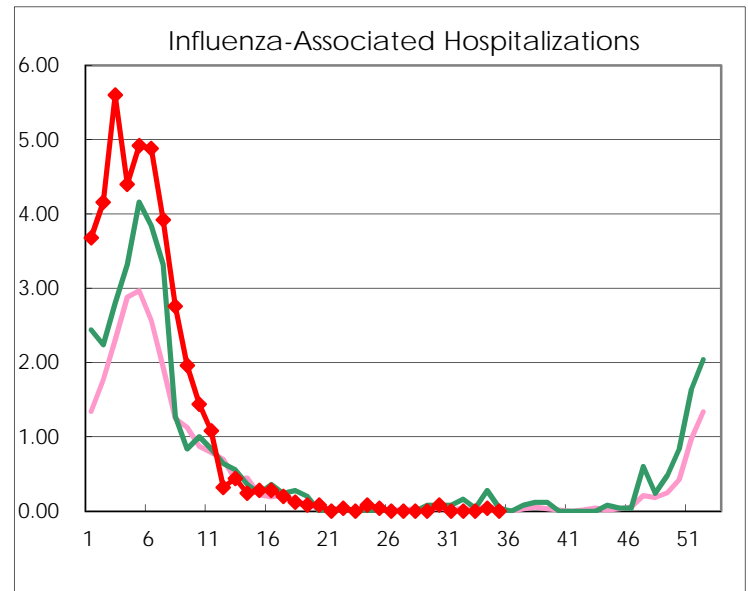
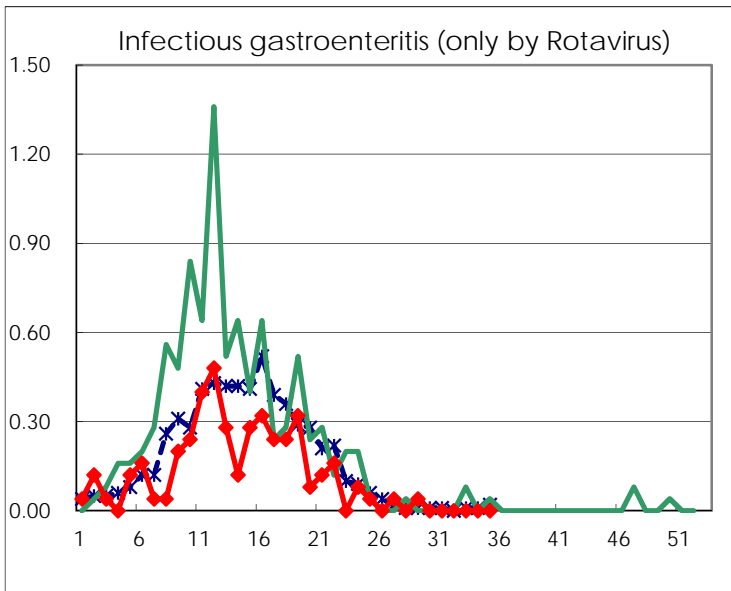
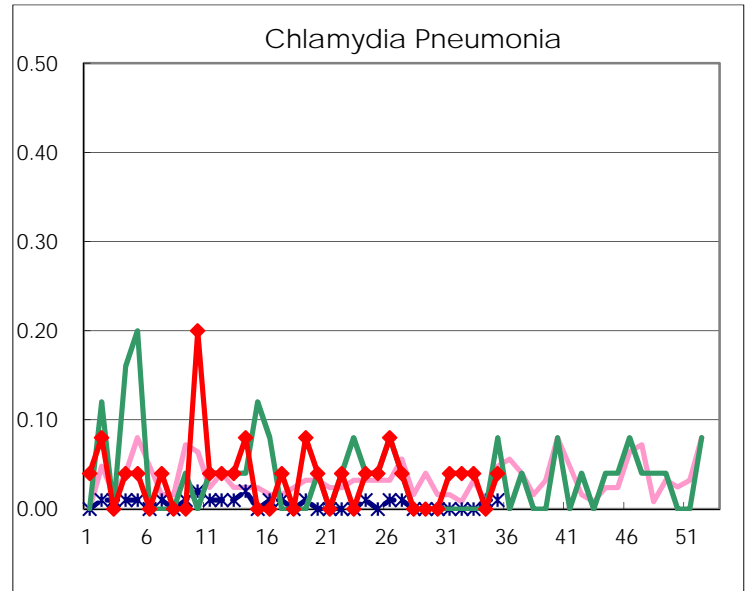
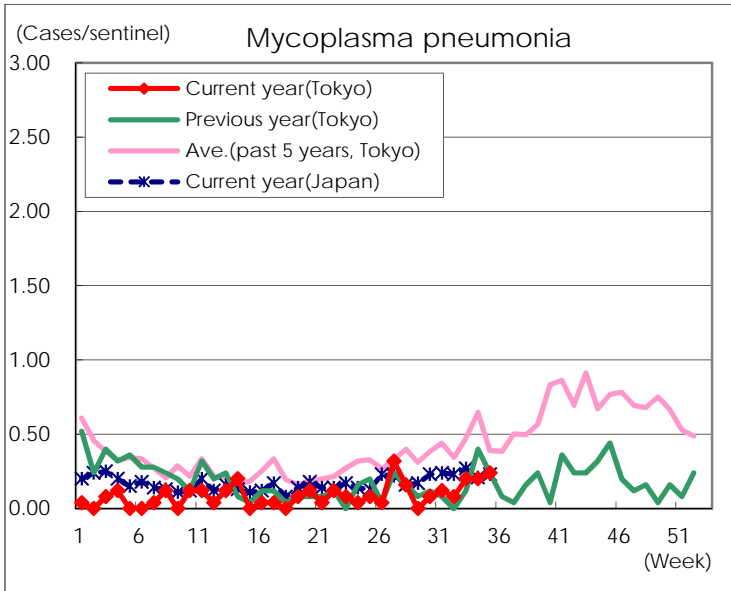
(Blank means 0.)

Disease Trend Graph (weekly reported cases per sentinel in comparison)









Number of sentinel facilities for weekly reporting		
Types of sentinels	Number of sentinels	Sentinels having reported
Pediatric	264	252
Influenza	419	404
Ophthalmic	39	38
Specially-designated	25	25