

13 September 2018 / Number 36

Surveillance System in Tokyo, Japan

The infectious diseases which all physicians must report

All physicians must report to health centers the incidence of the diseases which are shown at page one. Health centers electronically report the individual cases to Tokyo Metropolitan Infectious Disease Surveillance Center.

The infectious diseases required to be reported by the sentinels

The numbers of patients who visit the sentinel clinics or hospitals during a week are reported to health centers in Tokyo. And they electronically report the numbers to Tokyo Metropolitan Infectious Disease Surveillance Center. We have about 500 sentinel clinics and hospitals in Tokyo.

Tokyo Metropolitan Institute of Public Health

TEL:81-3-3363-3213 FAX:81-3-5332-7365

e-mail:www@tokyo-eiken.go.jp

URL:idsc.tokyo-eiken.go.jp/

Number of patients with the diseases which all physicians must report

Category	Diseases	Tokyo					Japan	
		33rd	34th	35th	36th	Cum 2018	36th	Cum 2018
I	Ebola hemorrhagic fever							
	Crimean-Congo hemorrhagic fever							
	Smallpox							
	South American hemorrhagic fever							
	Plague							
	Marburg disease							
	Lassa fever							
II	Acute poliomyelitis							
	Tuberculosis	68	64	60	57	2,279	320	14,725
	Diphtheria							
	Severe Acute Respiratory Syndrome(SARS)							
	Middle East Respiratory Syndrome (MERS)							
	Avian influenza H5N1							
	Avian influenza H7N9							
III	Cholera							3
	Shigellosis		1	1	1	29	2	114
	Enterohemorrhagic Escherichia coli infection	30	28	38	15	341	141	2,835
	Typhoid fever		1			8		22
	Paratyphoid fever					7	1	15
IV	Hepatitis E	3	1	1	1	62	9	302
	West Nile fever							
	Hepatitis A	11	12	5	6	338	13	724
	Echinococcosis							8
	Yellow fever							
	Psittacosis					1		5
	Omsk hemorrhagic fever							
	Relapsing fever							5
	Kyasanur forest disease							
	Q fever					2		3
	Rabies							
	Coccidioidomycosis							2
	Monkeypox							
	Zika virus infection							
	Severe Fever with Thrombocytopenia Syndrome						1	60
	Hemorrhagic fever with renal syndrome							
	Western equine encephalitis							
	Tick-borne encephalitis							1
	Anthrax							
	Chikungunya fever							3
	Scrub typhus(Tsutsugamushi disease)					4	1	98
	Dengue fever	1	4	3	2	36	8	119
	Eastern equine encephalitis							
	Avian influenza (excluding H5N1 and H7N9)							
	Nipah virus infection							
	Japanese spotted fever						9	174
	Japanese encephalitis							
	Hantavirus pulmonary syndrome							
	Herpes B virus infection							
	Glanders							
	Brucellosis							3
	Venezuelan equine encephalitis							
	Hendra virus infection							
	Epidemic typhus							
Botulism					1		2	
Malaria			2	1	12	1	34	
Tularemia								
Lyme disease							7	
Lyssavirus infection(excluding rabies)								
Rift valley fever								
Melioidosis					1		2	
Legionellosis	5	7	5	3	93	42	1,306	
Leptospirosis					1	1	6	
Rocky mountain spotted fever								

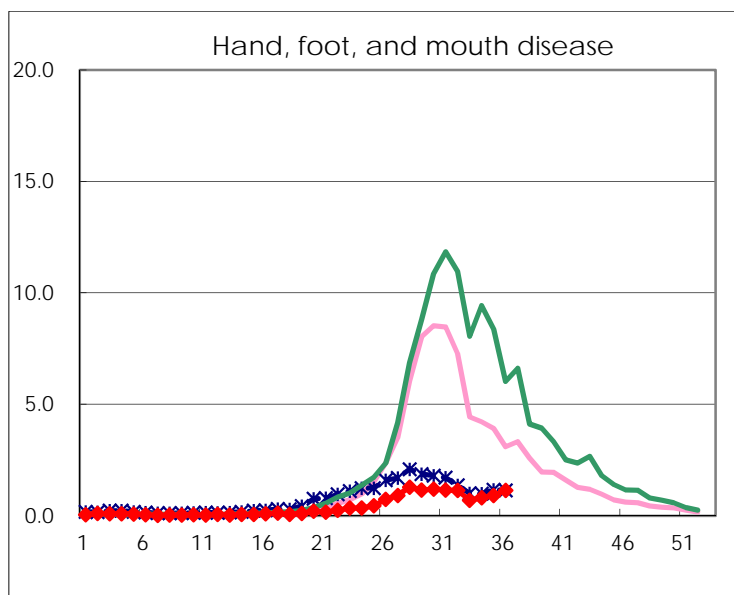
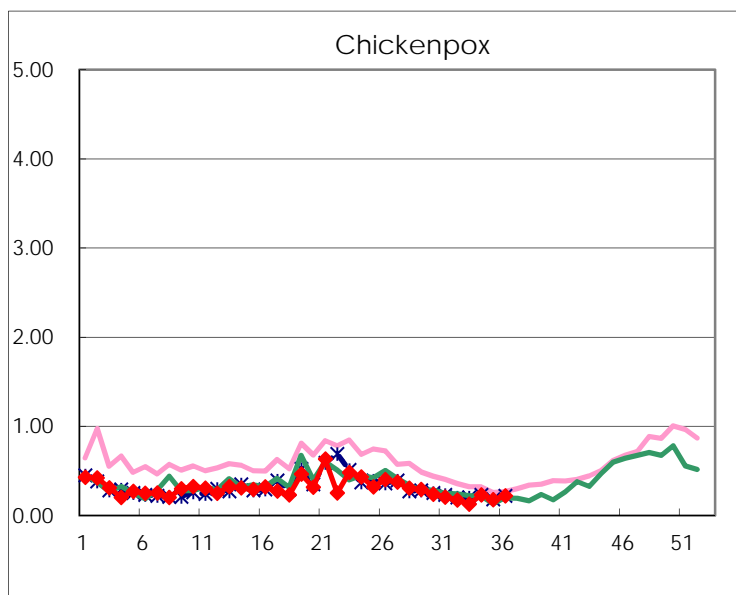
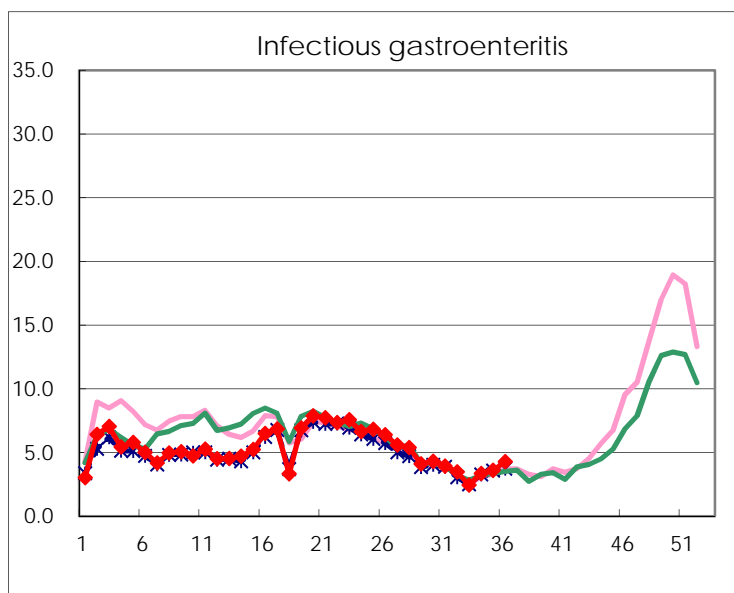
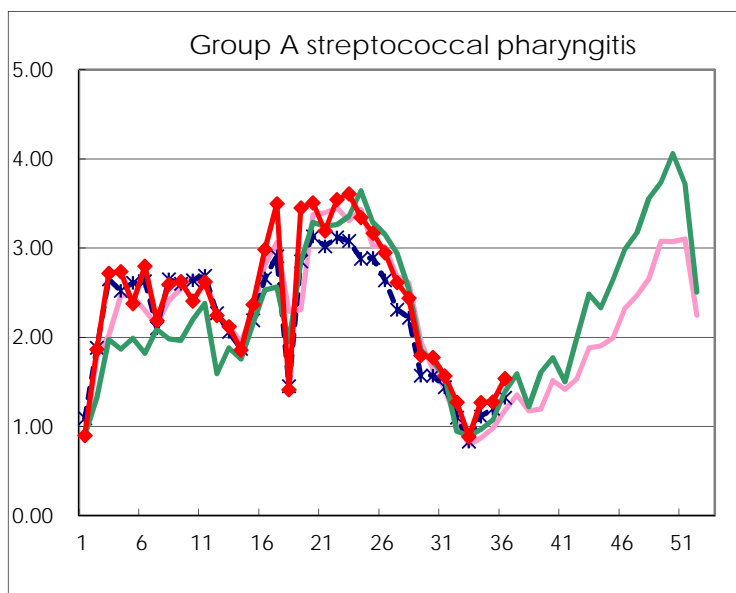
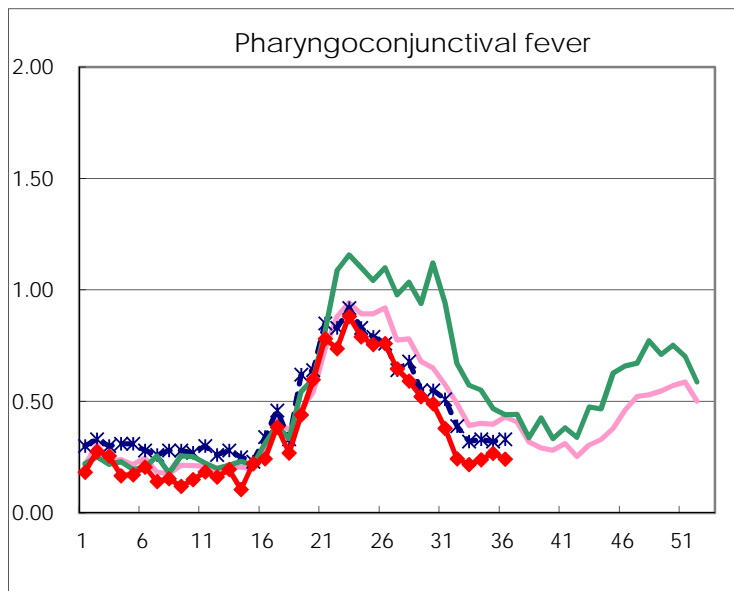
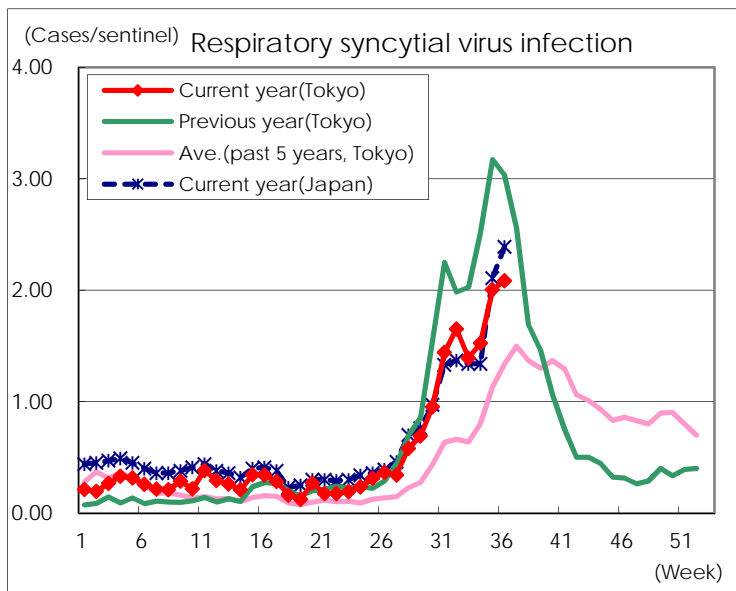
Category	Diseases	Tokyo					Japan	
		33rd	34th	35th	36th	Cum 2018	36th	Cum 2018
V	Amebiasis	2	1	6	3	111	3	568
	Viral hepatitis(excluding hepatitis A and E)	2	1	1	1	37	1	155
	CRE infection	5	6	2	6	134	41	1,357
	Acute Flaccid Paralysis (excluding Acute poliomyelitis)		1			3	2	32
	Acute encephalitis(excluding JE and WNE)			2	1	48	3	495
	Cryptosporidiosis					3		11
	Creutzfeldt-Jakob disease	1				16	4	145
	Severe invasive streptococcal infections(TSLs)	1		1	1	63	10	494
	Acquired immunodeficiency syndrome (AIDS)	6	7	7	7	278	12	896
	Giardiasis			2	1	15	1	54
	Invasive <i>Haemophilus influenzae</i> disease	1	1		1	24	4	340
	Invasive meningococcal disease					6	3	28
	Invasive pneumococcal disease	4	4	9	3	281	17	2,351
	Varicella (limited to hospitalized case)	1	2	2		42	6	301
	Congenital rubella syndrome							
	Syphilis	22	32	36	40	1,195	91	4,675
	Disseminated cryptococcosis		1		1	15	2	130
	Tetanus					2	3	82
	Vancomycin-resistant <i>S. aureus</i> infection							
	Vancomycin-resistant <i>Enterococcus</i> infection		1			4	1	51
	Pertussis	67	81	78	72	1,078	227	5,933
Rubella	10	25	37	34	146	127	496	
Measles				1	15	2	204	
MDRA infection					3	2	16	

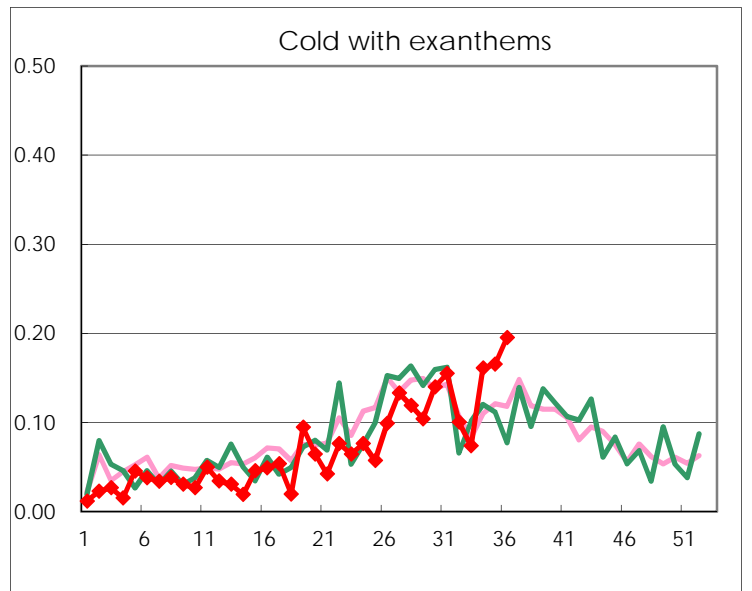
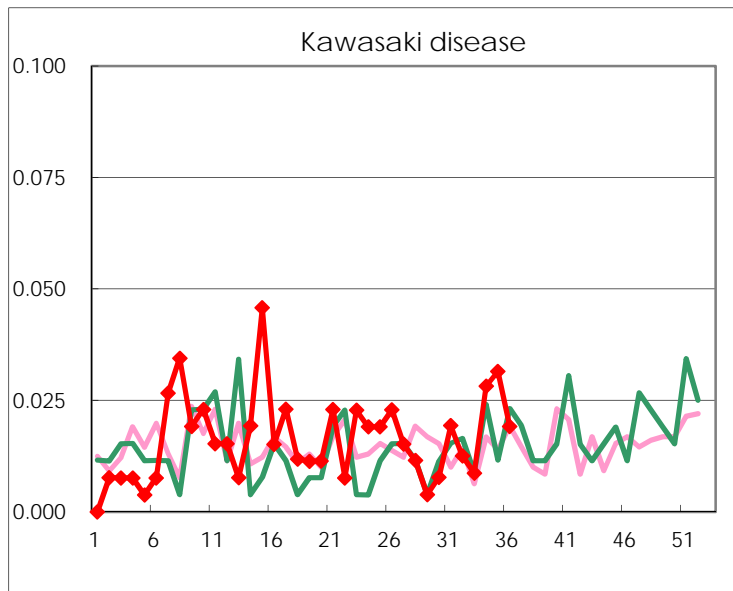
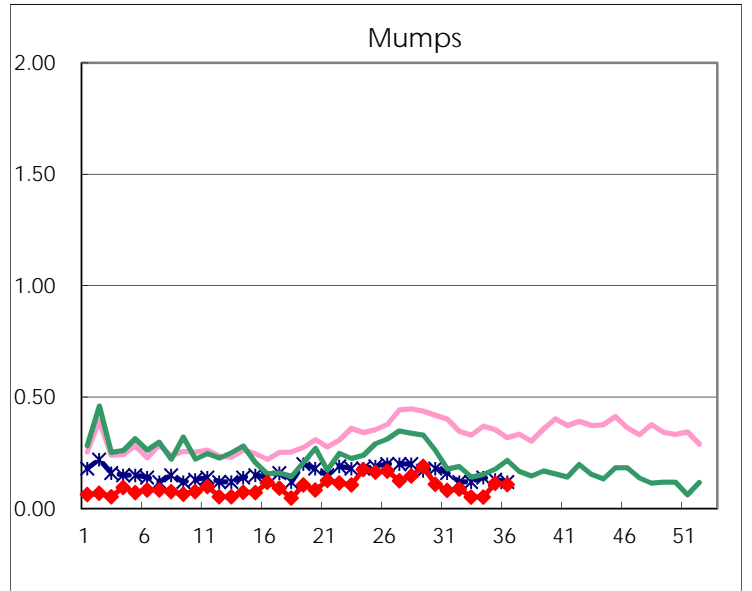
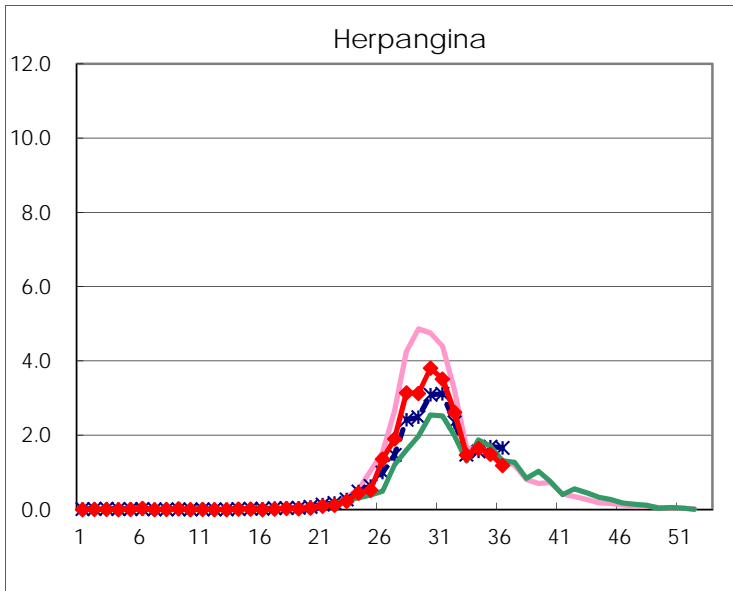
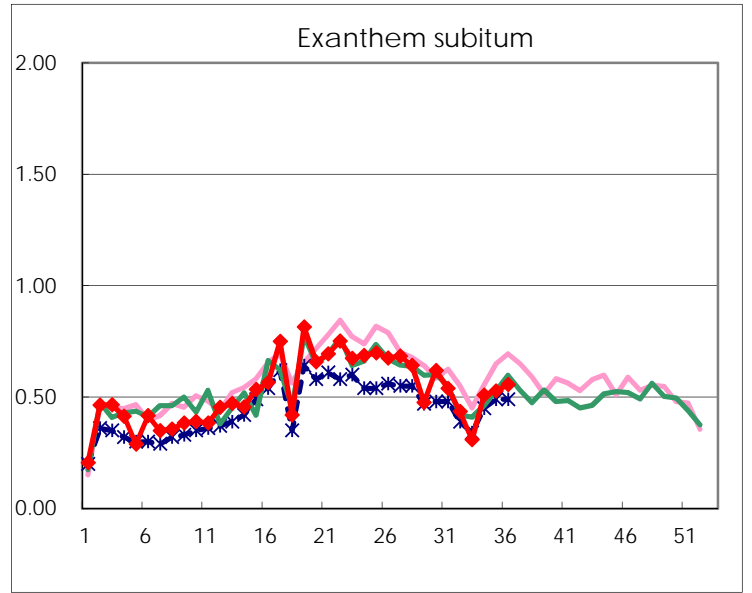
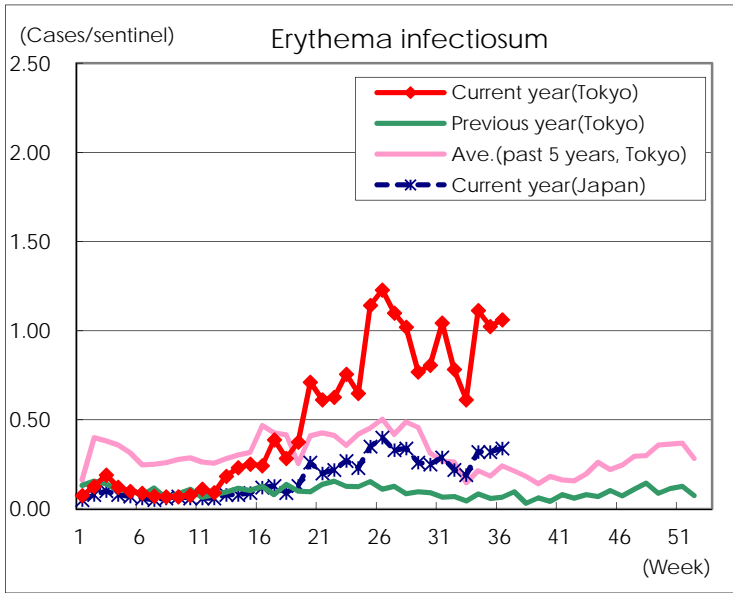
Number of patients with the diseases to be reported
by the designated clinics and hospitals

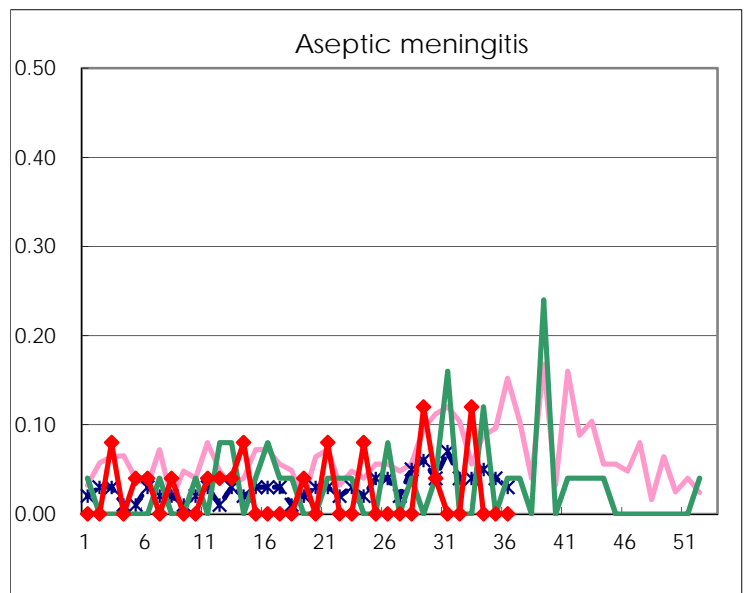
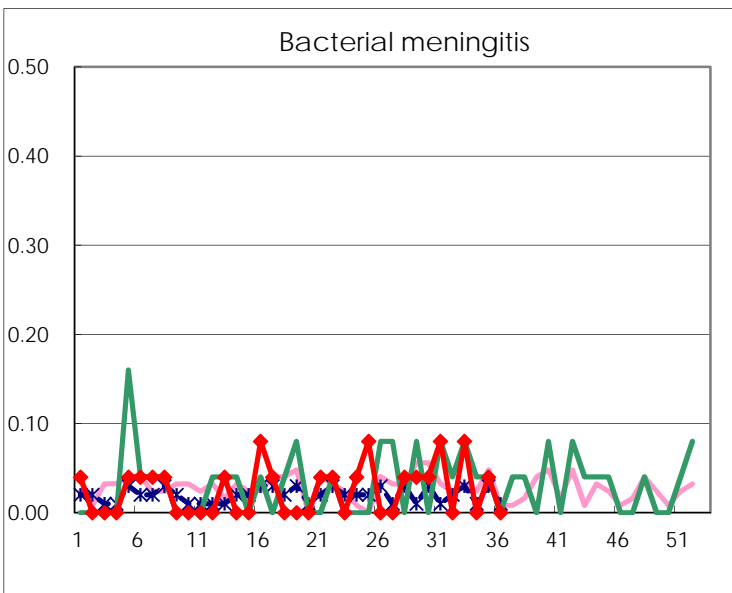
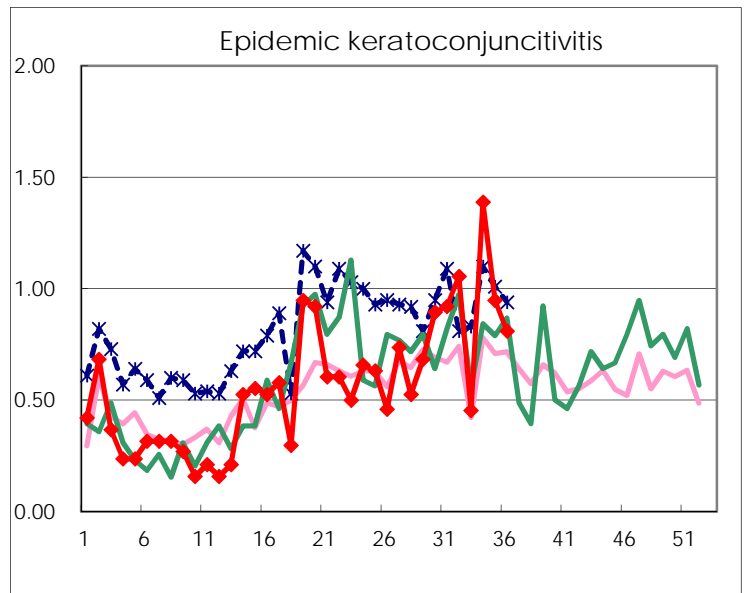
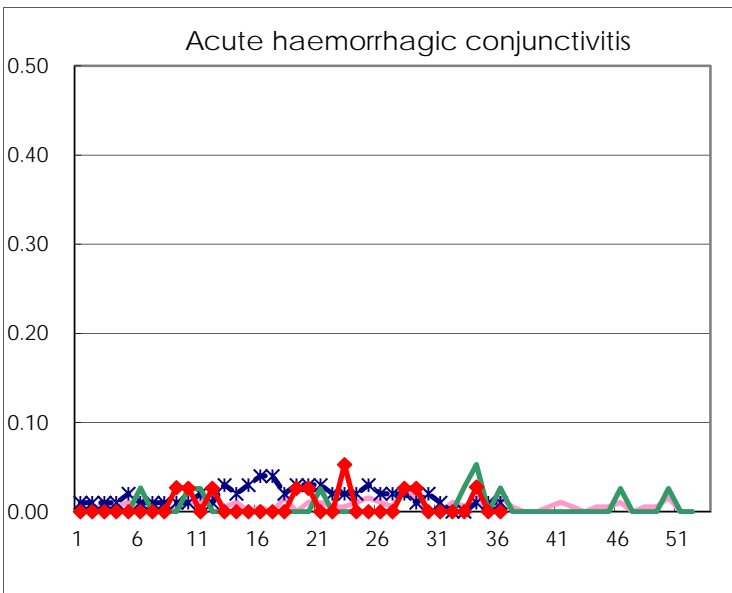
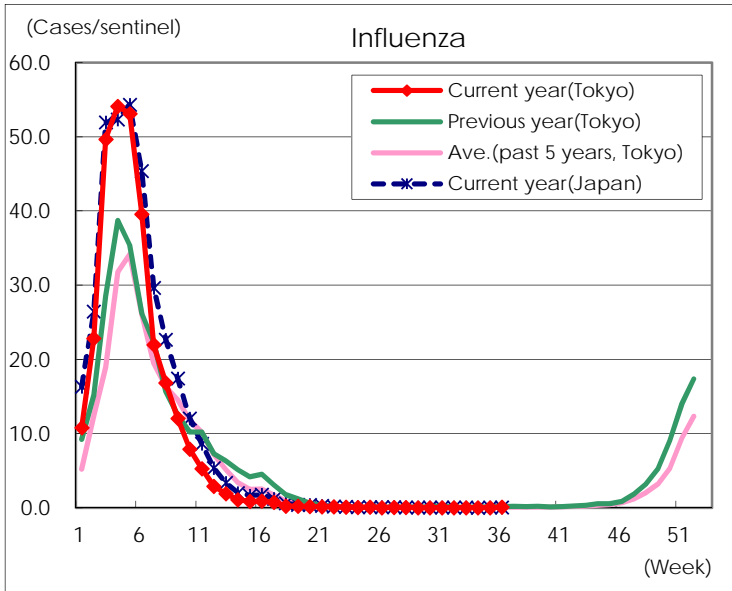
Diseases	Tokyo				
	33rd	34th	35th	36th	/sentinel
Respiratory syncytial virus infection	320	378	509	544	2.08
Pharyngoconjunctival fever	50	59	68	63	0.24
Group A streptococcal pharyngitis	203	314	324	401	1.54
Infectious gastroenteritis	559	832	911	1,114	4.27
Chickenpox	29	57	45	57	0.22
Hand, foot, and mouth disease	160	201	229	298	1.14
Erythema infectiosum	141	276	260	277	1.06
Exanthem subitum	71	126	134	145	0.56
Herpangina	340	408	379	311	1.19
Mumps	12	13	29	28	0.11
Kawasaki disease	2	7	8	5	0.02
Cold with exanthems	17	40	42	51	0.20
Influenza	12	4	10	34	0.08
Acute hemorrhagic conjunctivitis		1			
Epidemic keratoconjunctivitis	15	50	36	30	0.81
Bacterial meningitis	2		1		
Aseptic meningitis	3				
<i>Mycoplasma pneumoniae</i>	5	5	6	6	0.24
Chlamydial pneumonia (excluding psittacosis)	1		1		
Infectious gastroenteritis (only by Rotavirus)					
Influenza-Associated Hospitalizations		1			

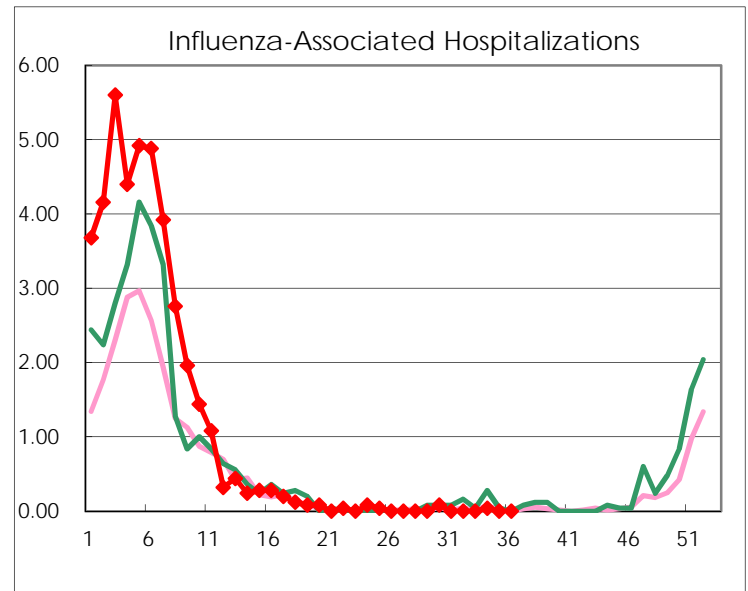
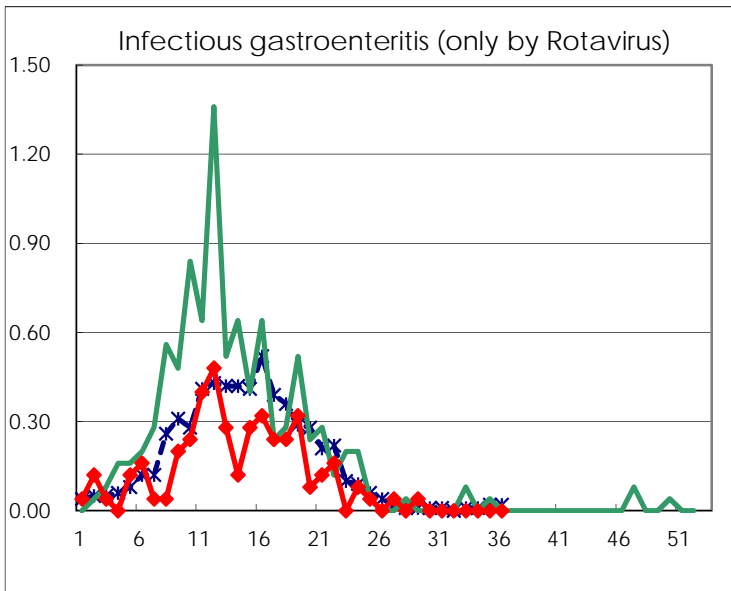
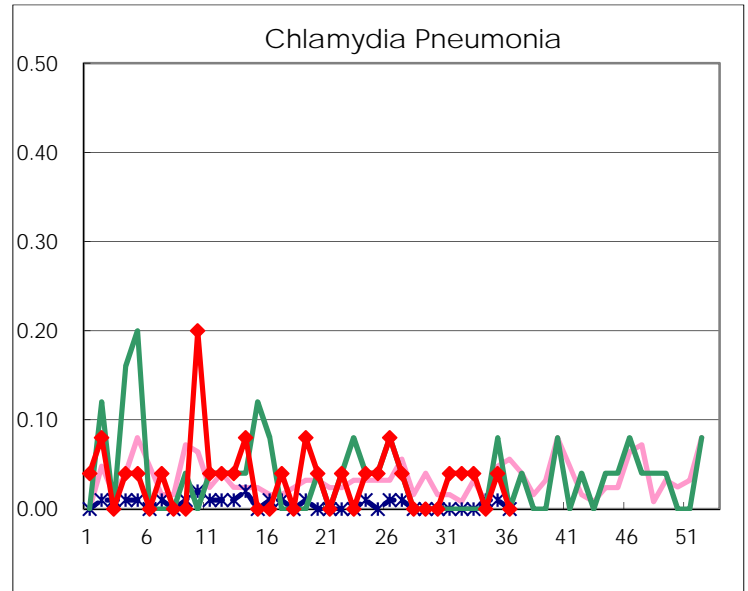
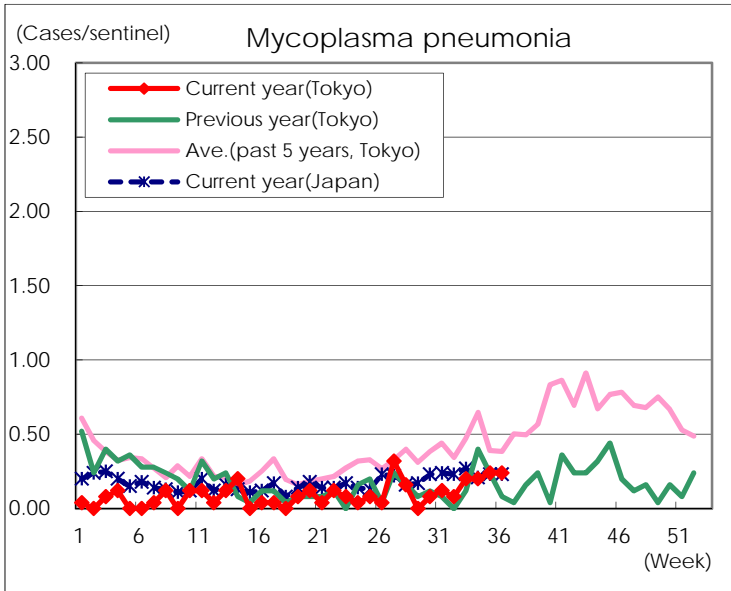
(Blank means 0.)

Disease Trend Graph (weekly reported cases per sentinel in comparison)









Number of sentinel facilities for weekly reporting		
Types of sentinels	Number of sentinels	Sentinels having reported
Pediatric	264	261
Influenza	419	413
Ophthalmic	39	37
Specially-designated	25	25