

20 September 2018 / Number 37

Surveillance System in Tokyo, Japan

The infectious diseases which all physicians must report

All physicians must report to health centers the incidence of the diseases which are shown at page one. Health centers electronically report the individual cases to Tokyo Metropolitan Infectious Disease Surveillance Center.

The infectious diseases required to be reported by the sentinels

The numbers of patients who visit the sentinel clinics or hospitals during a week are reported to health centers in Tokyo. And they electronically report the numbers to Tokyo Metropolitan Infectious Disease Surveillance Center. We have about 500 sentinel clinics and hospitals in Tokyo.

Tokyo Metropolitan Institute of Public Health

TEL:81-3-3363-3213 FAX:81-3-5332-7365

e-mail:www@tokyo-eiken.go.jp

URL:idsc.tokyo-eiken.go.jp/

Number of patients with the diseases which all physicians must report

Category	Diseases	Tokyo					Japan	
		34th	35th	36th	37th	Cum 2018	37th	Cum 2018
I	Ebola hemorrhagic fever							
	Crimean-Congo hemorrhagic fever							
	Smallpox							
	South American hemorrhagic fever							
	Plague							
	Marburg disease							
	Lassa fever							
II	Acute poliomyelitis							
	Tuberculosis	65	65	64	61	2,354	329	15,296
	Diphtheria							
	Severe Acute Respiratory Syndrome(SARS)							
	Middle East Respiratory Syndrome (MERS)							
	Avian influenza H5N1							
	Avian influenza H7N9							
III	Cholera							3
	Shigellosis	1	1	1	1	30	2	116
	Enterohemorrhagic Escherichia coli infection	28	38	15	17	358	135	3,002
	Typhoid fever	1				8		22
	Paratyphoid fever					7	1	16
IV	Hepatitis E	1	1	1	7	69	13	315
	West Nile fever							
	Hepatitis A	12	5	6	9	347	17	745
	Echinococcosis						1	9
	Yellow fever							
	Psittacosis					1		5
	Omsk hemorrhagic fever							
	Relapsing fever							5
	Kyasanur forest disease							
	Q fever					2		3
	Rabies							
	Coccidioidomycosis							2
	Monkeypox							
	Zika virus infection							
	Severe Fever with Thrombocytopenia Syndrome						2	62
	Hemorrhagic fever with renal syndrome							
	Western equine encephalitis							
	Tick-borne encephalitis							1
	Anthrax							
	Chikungunya fever							3
	Scrub typhus(Tsutsugamushi disease)					4		98
	Dengue fever	4	3	2	3	39	7	126
	Eastern equine encephalitis							
	Avian influenza (excluding H5N1 and H7N9)							
	Nipah virus infection							
	Japanese spotted fever						7	181
	Japanese encephalitis							
	Hantavirus pulmonary syndrome							
	Herpes B virus infection							
	Glanders							
	Brucellosis							3
	Venezuelan equine encephalitis							
	Hendra virus infection							
	Epidemic typhus							
Botulism					1		2	
Malaria		2	1			12	3	37
Tularemia								
Lyme disease			1			1	1	9
Lyssavirus infection(excluding rabies)								
Rift valley fever								
Melioidosis					1		2	
Legionellosis	7	5	4	6	100	43	1,359	
Leptospirosis					1	2	13	
Rocky mountain spotted fever								

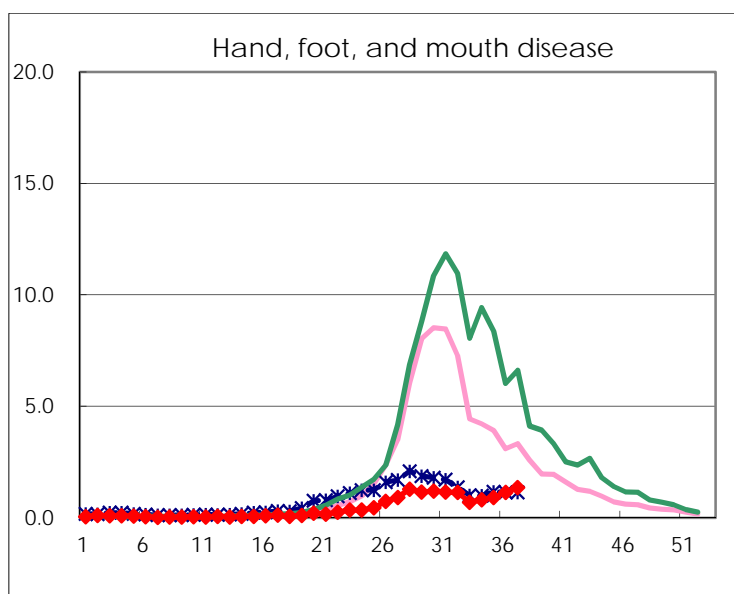
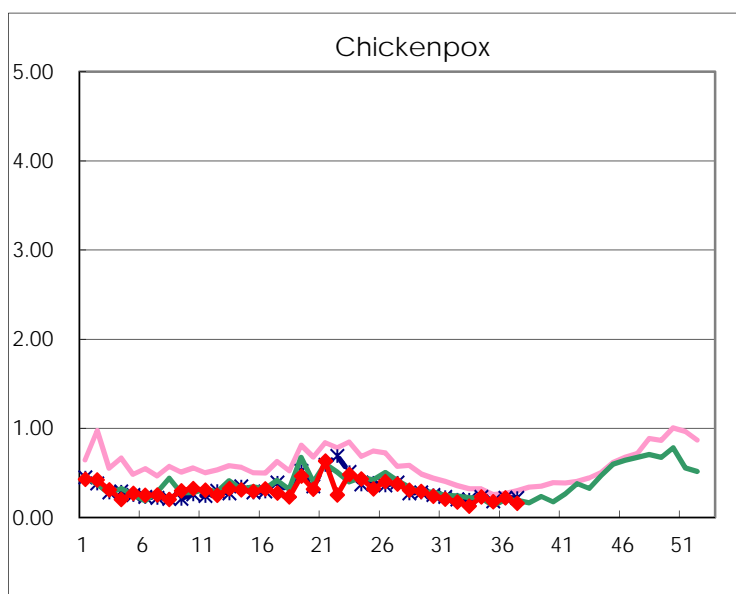
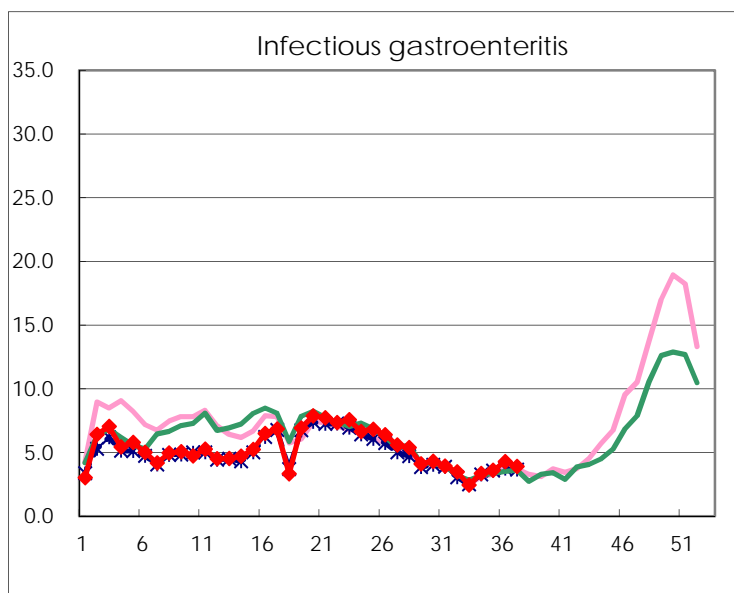
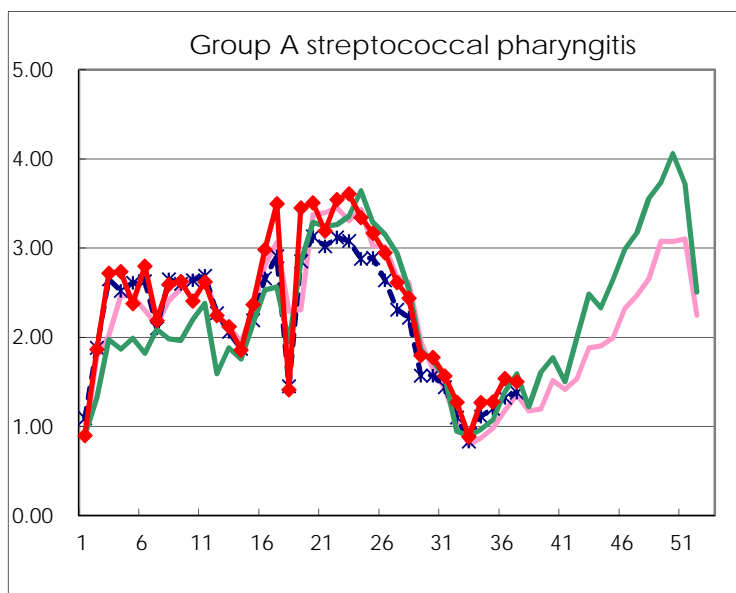
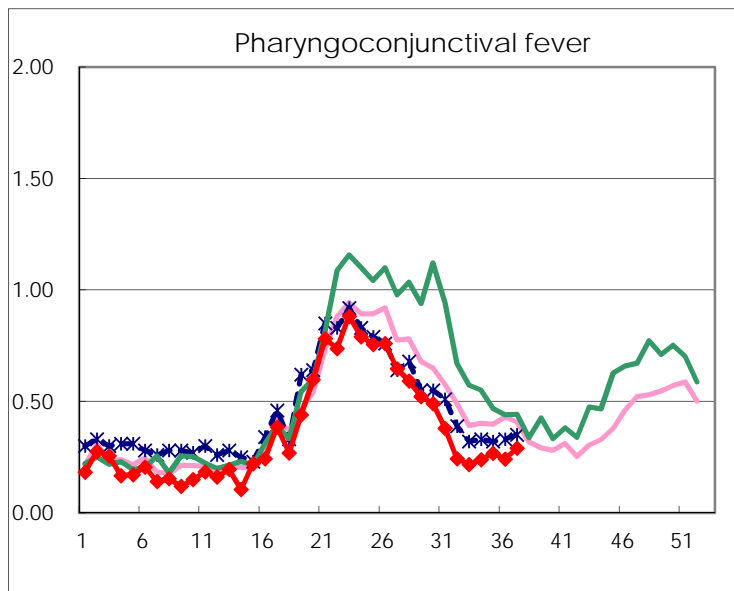
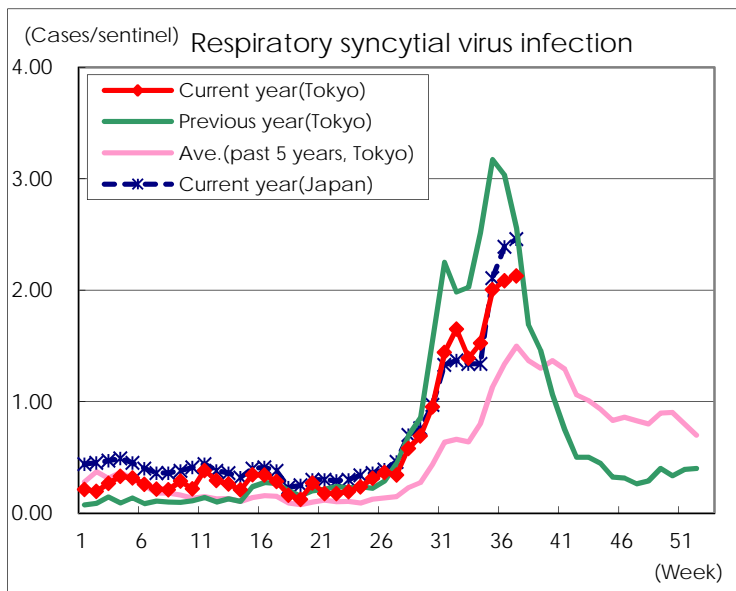
Category	Diseases	Tokyo					Japan	
		34th	35th	36th	37th	Cum 2018	37th	Cum 2018
V	Amebiasis	1	6	3	3	114	8	589
	Viral hepatitis(excluding hepatitis A and E)	1	1	1	3	40	3	162
	CRE infection	6	2	7	4	139	43	1,421
	Acute Flaccid Paralysis (excluding Acute poliomyelitis)	1				3	1	34
	Acute encephalitis(excluding JE and WNE)		2	1		48	1	500
	Cryptosporidiosis					3		11
	Creutzfeldt-Jakob disease				1	17	4	151
	Severe invasive streptococcal infections(TSLs)		1	1	3	66	7	506
	Acquired immunodeficiency syndrome (AIDS)	7	7	8	3	282	11	920
	Giardiasis		2	1		15		54
	Invasive <i>Haemophilus influenzae</i> disease	1		1		24	5	348
	Invasive meningococcal disease					6		28
	Invasive pneumococcal disease	4	9	3	2	283	17	2,379
	Varicella (limited to hospitalized case)	2	2		1	43	3	304
	Congenital rubella syndrome							
	Syphilis	32	36	41	34	1,230	81	4,810
	Disseminated cryptococcosis	1		1		15	1	132
	Tetanus				1	3	1	84
	Vancomycin-resistant <i>S. aureus</i> infection							
	Vancomycin-resistant <i>Enterococcus</i> infection	1			1	5	1	54
	Pertussis	81	78	76	73	1,155	242	6,274
	Rubella	25	37	36	48	196	127	642
Measles			1		15	2	206	
MDRA infection					3		16	

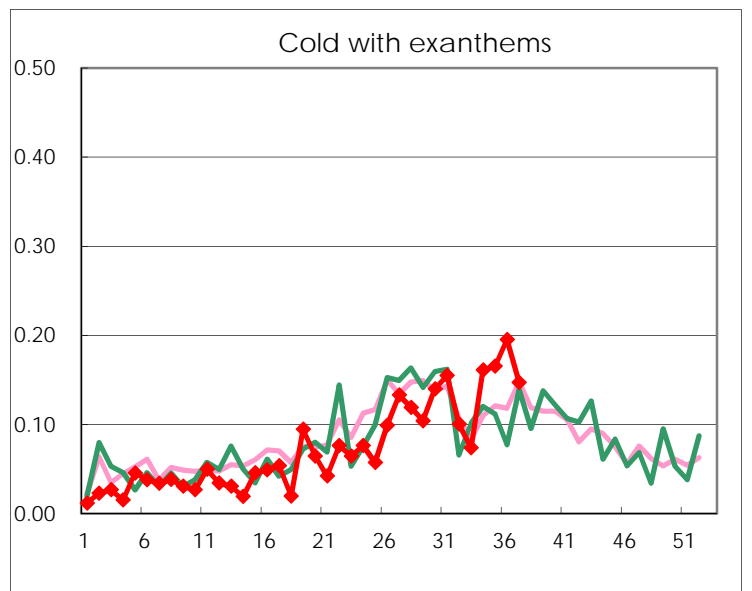
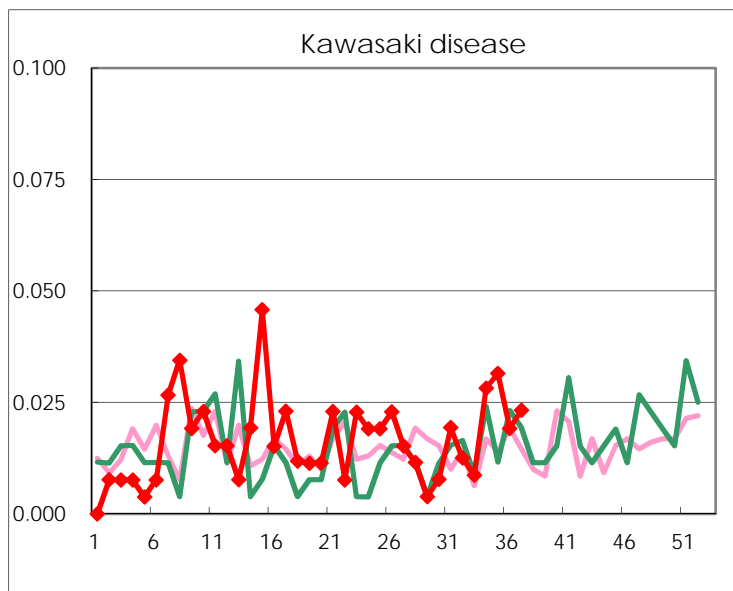
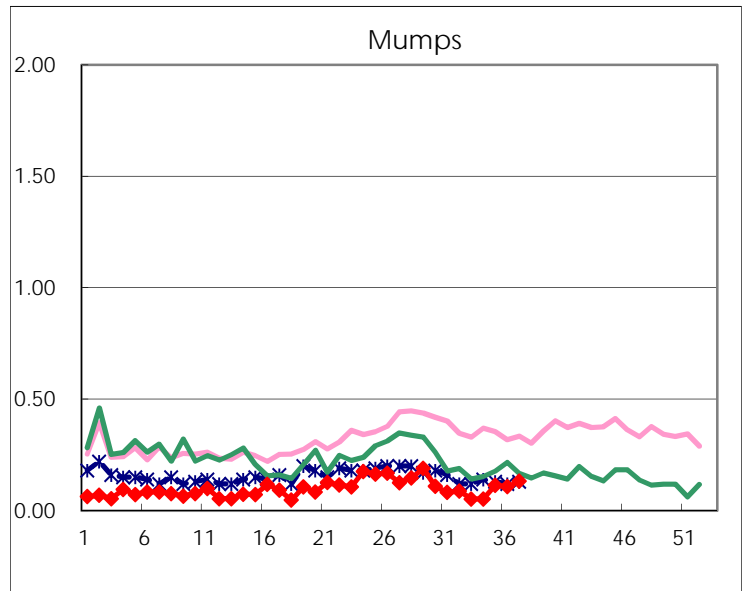
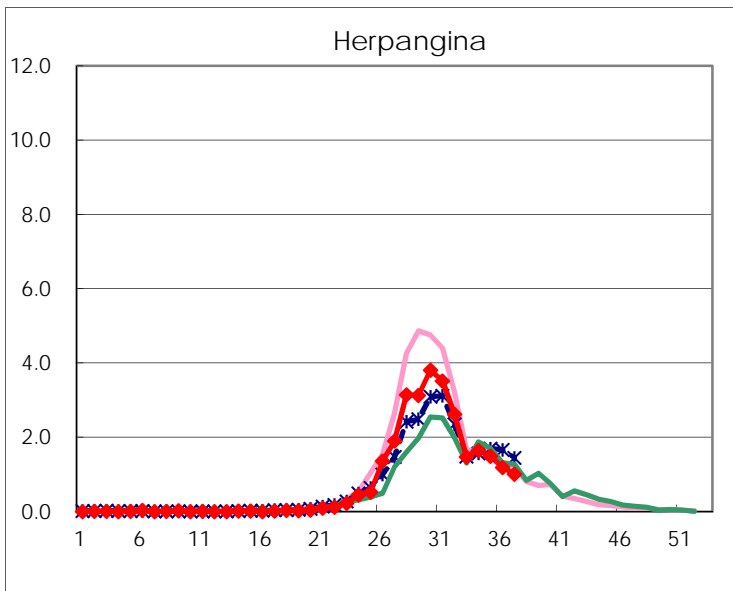
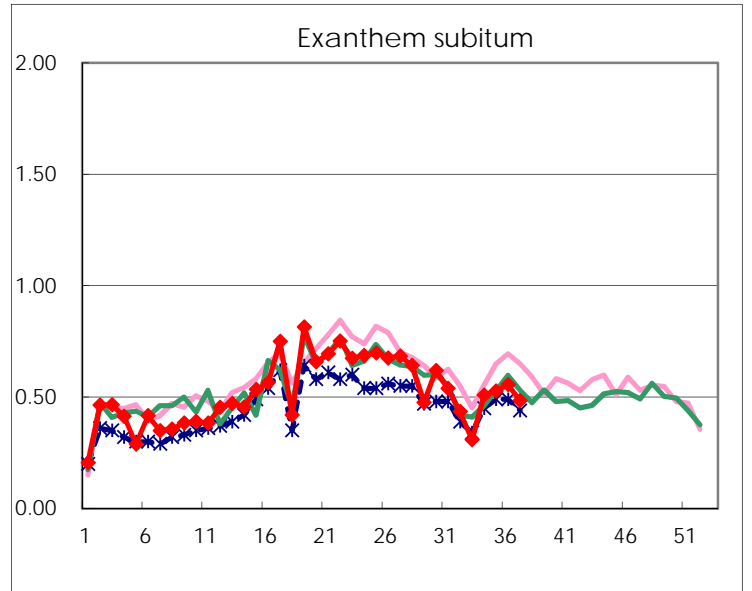
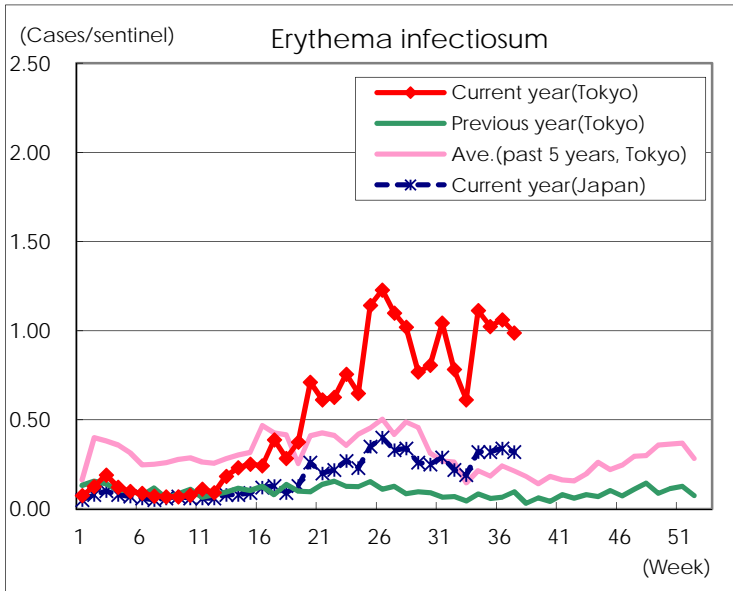
Number of patients with the diseases to be reported
by the designated clinics and hospitals

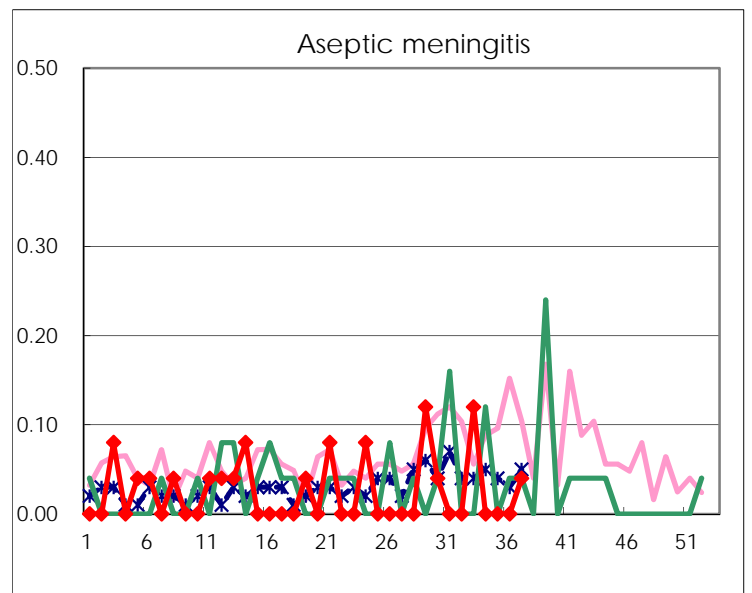
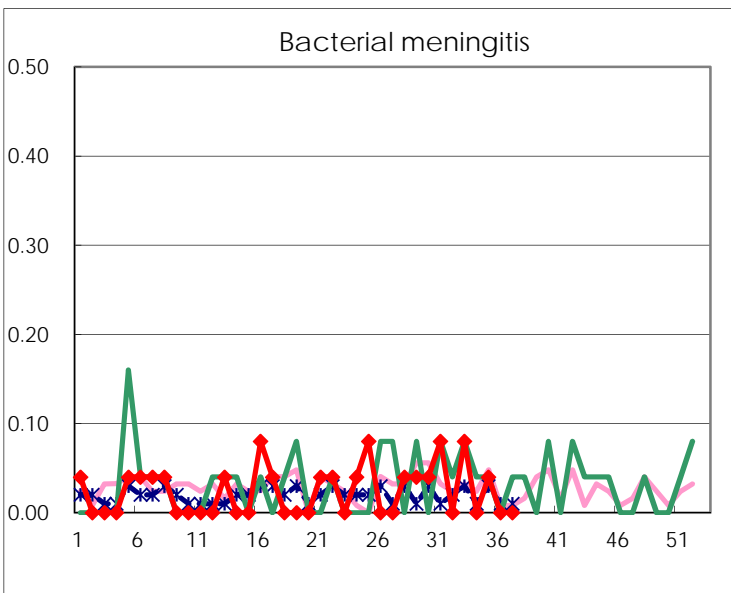
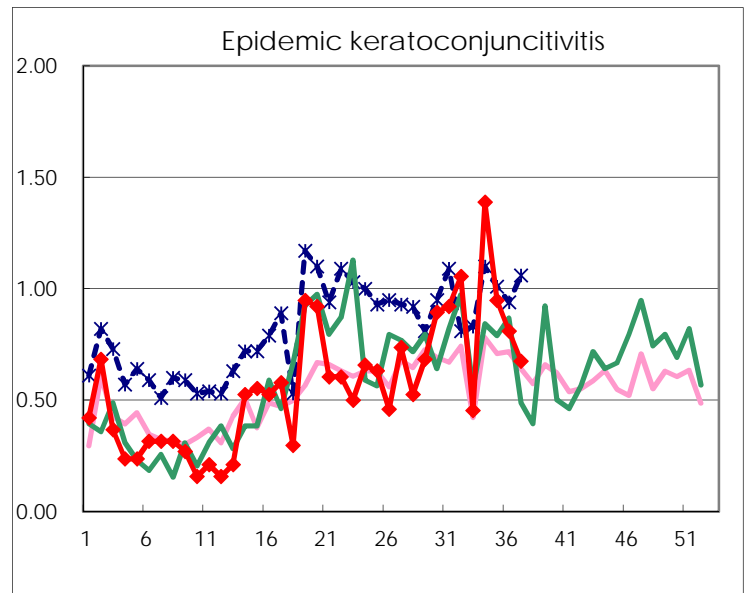
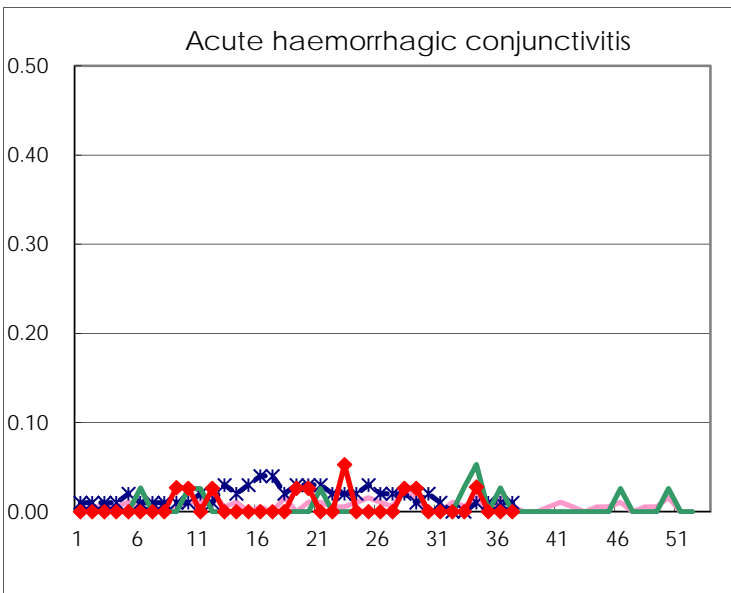
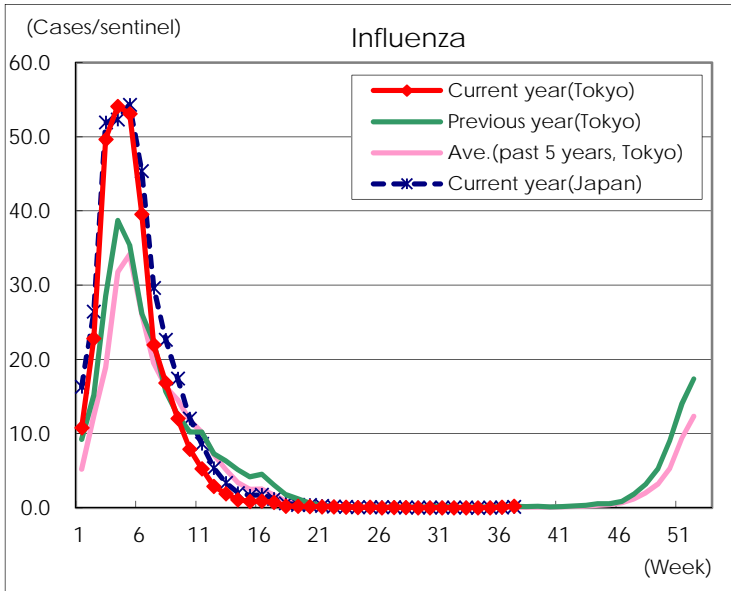
Diseases	Tokyo				
	34th	35th	36th	37th	/sentinel
Respiratory syncytial virus infection	378	509	544	549	2.13
Pharyngoconjunctival fever	59	68	63	75	0.29
Group A streptococcal pharyngitis	314	324	401	387	1.50
Infectious gastroenteritis	832	911	1,114	1,008	3.91
Chickenpox	57	45	57	41	0.16
Hand, foot, and mouth disease	201	229	298	348	1.35
Erythema infectiosum	276	260	277	255	0.99
Exanthem subitum	126	134	145	125	0.48
Herpangina	408	379	311	261	1.01
Mumps	13	29	28	34	0.13
Kawasaki disease	7	8	5	6	0.02
Cold with exanthems	40	42	51	38	0.15
Influenza	4	10	34	87	0.21
Acute hemorrhagic conjunctivitis	1				
Epidemic keratoconjunctivitis	50	36	30	25	0.68
Bacterial meningitis		1			
Aseptic meningitis				1	0.04
<i>Mycoplasma pneumoniae</i>	5	6	6	1	0.04
Chlamydial pneumonia (excluding psittacosis)		1			
Infectious gastroenteritis (only by Rotavirus)					
Influenza-Associated Hospitalizations	1				

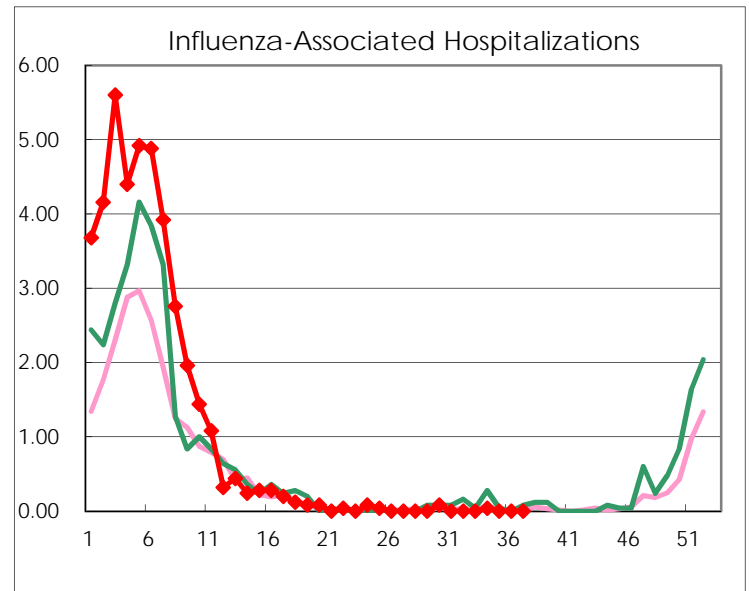
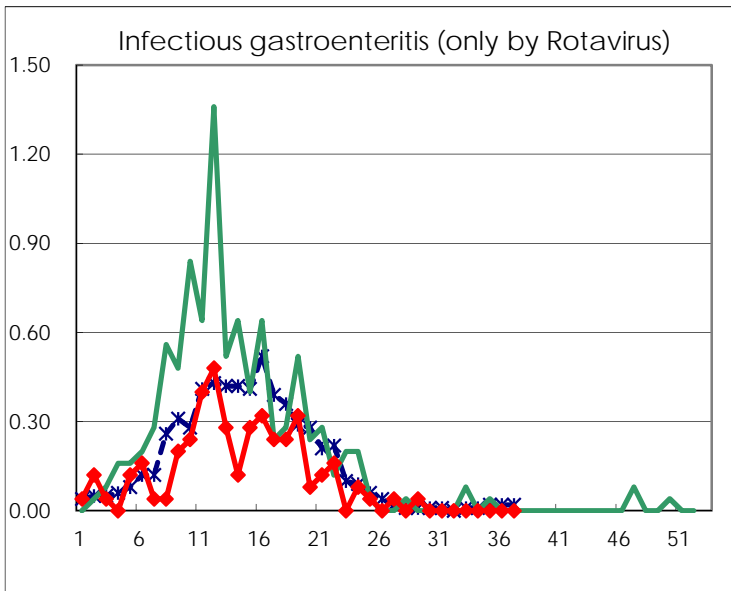
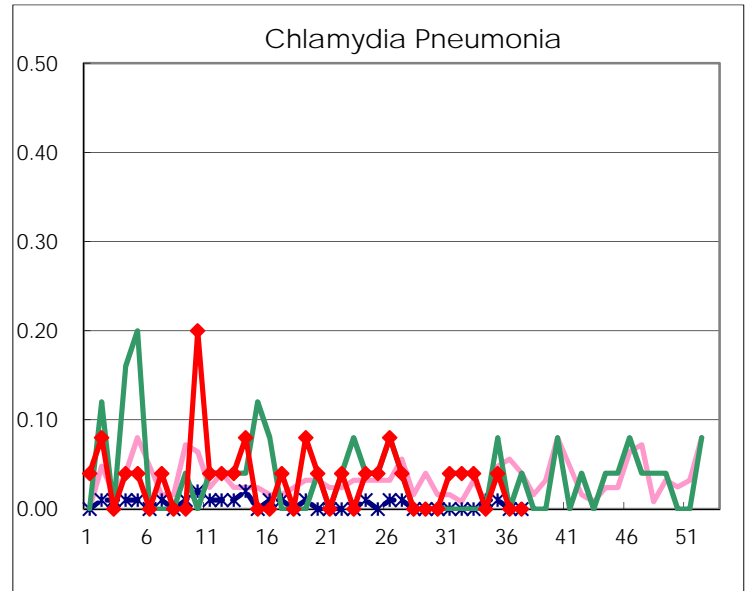
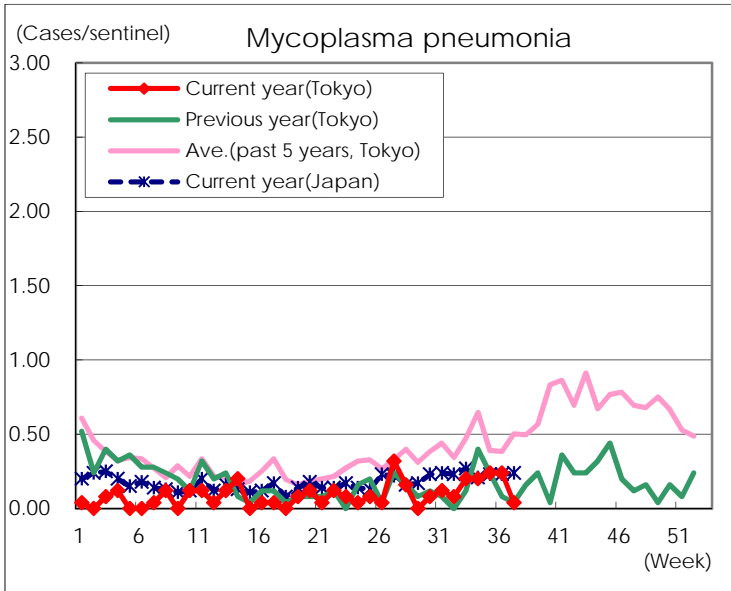
(Blank means 0.)

Disease Trend Graph (weekly reported cases per sentinel in comparison)









Number of sentinel facilities for weekly reporting		
Types of sentinels	Number of sentinels	Sentinels having reported
Pediatric	264	258
Influenza	419	413
Ophthalmic	39	37
Specially-designated	25	25