

27 September 2018 / Number 38

Surveillance System in Tokyo, Japan

The infectious diseases which all physicians must report

All physicians must report to health centers the incidence of the diseases which are shown at page one. Health centers electronically report the individual cases to Tokyo Metropolitan Infectious Disease Surveillance Center.

The infectious diseases required to be reported by the sentinels

The numbers of patients who visit the sentinel clinics or hospitals during a week are reported to health centers in Tokyo. And they electronically report the numbers to Tokyo Metropolitan Infectious Disease Surveillance Center. We have about 500 sentinel clinics and hospitals in Tokyo.

Tokyo Metropolitan Institute of Public Health

TEL:81-3-3363-3213 FAX:81-3-5332-7365

e-mail:www@tokyo-eiken.go.jp

URL:idsc.tokyo-eiken.go.jp/

Number of patients with the diseases which all physicians must report

Category	Diseases	Tokyo					Japan	
		35th	36th	37th	38th	Cum 2018	38th	Cum 2018
I	Ebola hemorrhagic fever							
	Crimean-Congo hemorrhagic fever							
	Smallpox							
	South American hemorrhagic fever							
	Plague							
	Marburg disease							
	Lassa fever							
II	Acute poliomyelitis							
	Tuberculosis	64	63	65	55	2,411	292	15,660
	Diphtheria							
	Severe Acute Respiratory Syndrome(SARS)							
	Middle East Respiratory Syndrome (MERS)							
	Avian influenza H5N1							
	Avian influenza H7N9							
III	Cholera							3
	Shigellosis	1	1	1	1	31	1	117
	Enterohemorrhagic Escherichia coli infection	38	15	18	11	370	96	3,117
	Typhoid fever				1	9	1	22
	Paratyphoid fever					7	1	17
IV	Hepatitis E	1	1	6	2	70	10	324
	West Nile fever							
	Hepatitis A	5	6	10	7	355	13	765
	Echinococcosis							9
	Yellow fever							
	Psittacosis					1		5
	Omsk hemorrhagic fever							
	Relapsing fever							5
	Kyasanur forest disease							
	Q fever					2		3
	Rabies							
	Coccidioidomycosis							2
	Monkeypox							
	Zika virus infection							
	Severe Fever with Thrombocytopenia Syndrome							62
	Hemorrhagic fever with renal syndrome							
	Western equine encephalitis							
	Tick-borne encephalitis							1
	Anthrax							
	Chikungunya fever							3
	Scrub typhus(Tsutsugamushi disease)					4		98
	Dengue fever	3	2	3	1	40	4	130
	Eastern equine encephalitis							
	Avian influenza (excluding H5N1 and H7N9)							
	Nipah virus infection							
	Japanese spotted fever						9	193
	Japanese encephalitis							
	Hantavirus pulmonary syndrome							
	Herpes B virus infection							
	Glanders							
	Brucellosis							3
	Venezuelan equine encephalitis							
	Hendra virus infection							
Epidemic typhus								
Botulism					1		2	
Malaria	2	1			12	1	38	
Tularemia								
Lyme disease		1			1		9	
Lyssavirus infection(excluding rabies)								
Rift valley fever								
Melioidosis					1		2	
Legionellosis	5	4	6	7	107	67	1,440	
Leptospirosis					1		14	
Rocky mountain spotted fever								

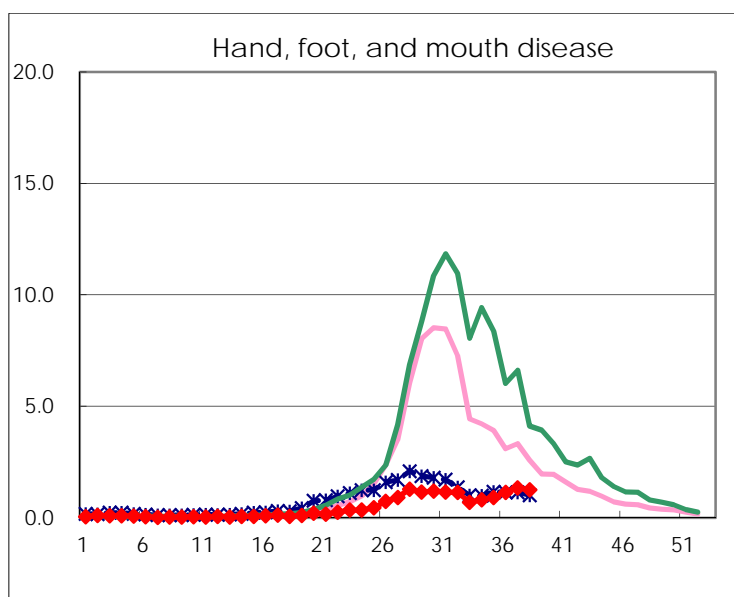
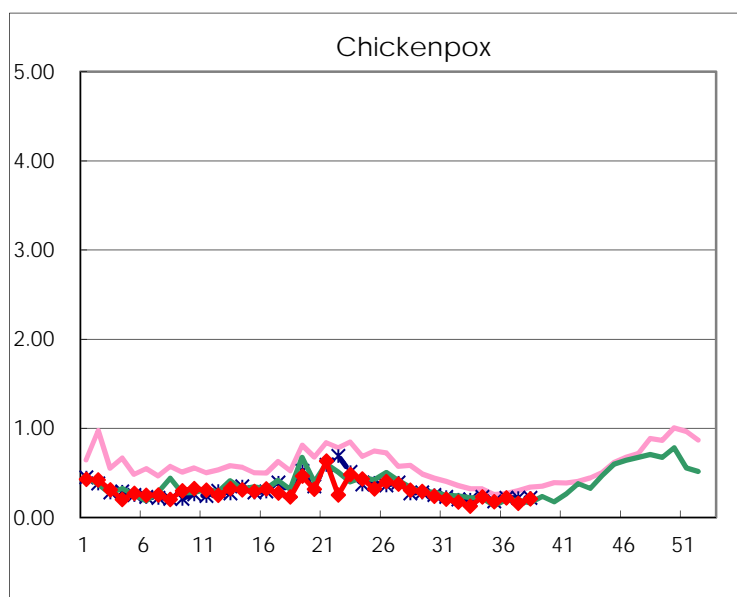
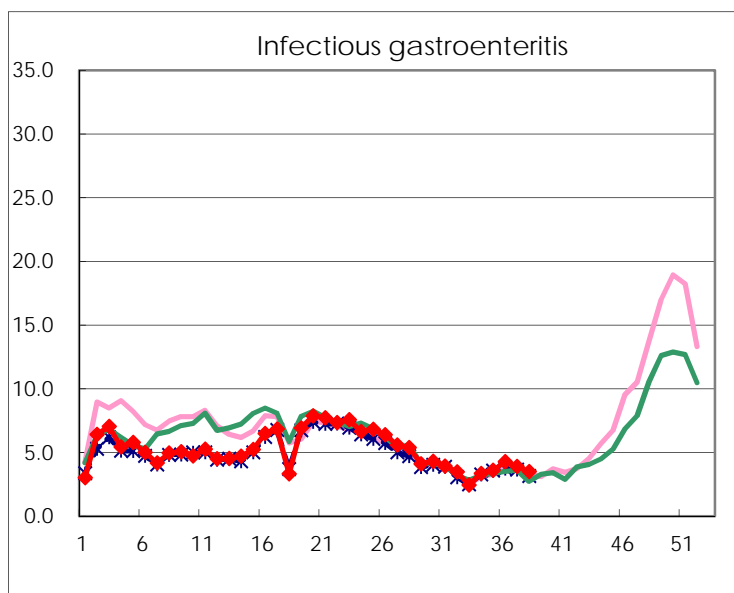
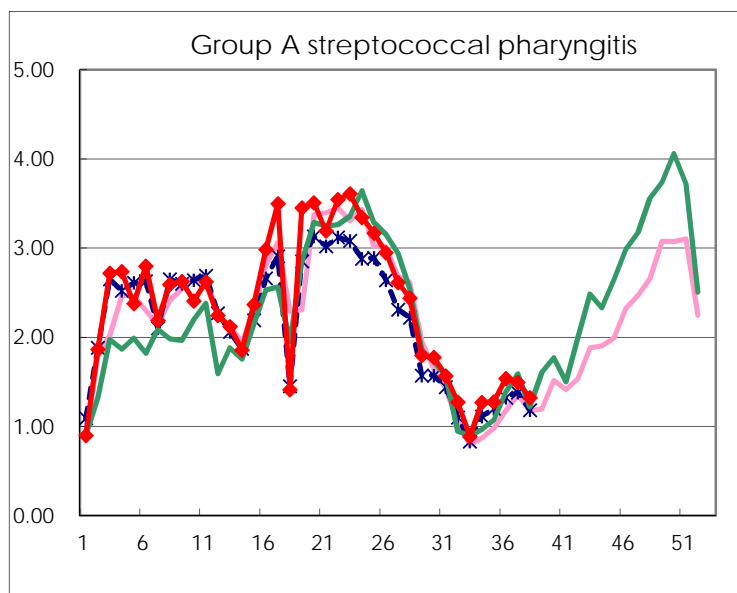
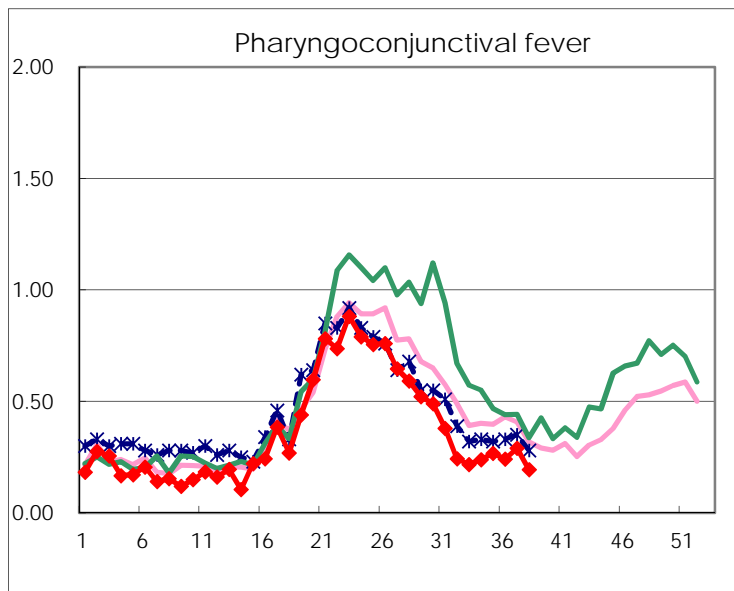
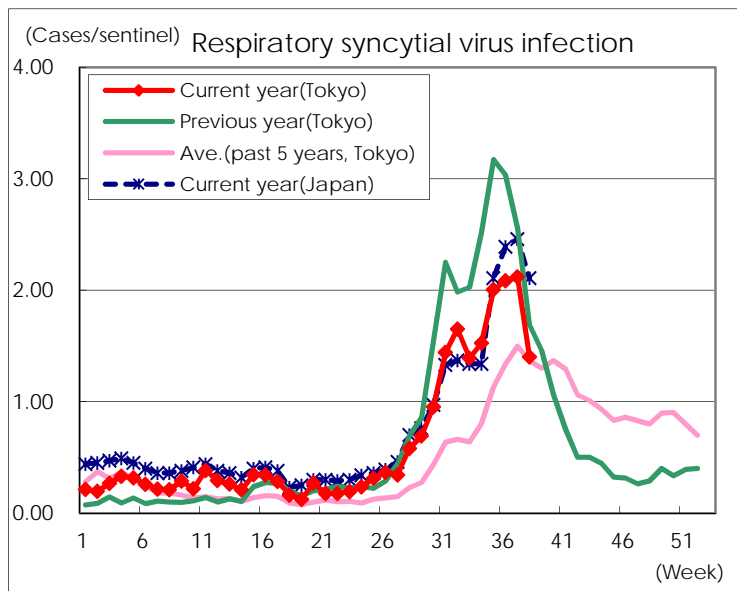
Category	Diseases	Tokyo					Japan	
		35th	36th	37th	38th	Cum 2018	38th	Cum 2018
V	Amebiasis	6	3	4	3	118	9	604
	Viral hepatitis(excluding hepatitis A and E)	1	1	3	1	41	5	168
	CRE infection	2	7	6	4	145	29	1,472
	Acute Flaccid Paralysis (excluding Acute poliomyelitis)					3	2	38
	Acute encephalitis(excluding JE and WNE)	2	1			48	5	507
	Cryptosporidiosis					3		11
	Creutzfeldt-Jakob disease			1		17	2	153
	Severe invasive streptococcal infections(TSLs)	1	1	4		67	6	517
	Acquired immunodeficiency syndrome (AIDS)	7	8	4	8	291	14	946
	Giardiasis	2	1		1	16		55
	Invasive <i>Haemophilus influenzae</i> disease		1		1	25	1	354
	Invasive meningococcal disease					6		28
	Invasive pneumococcal disease	9	3	2	2	285	17	2,406
	Varicella (limited to hospitalized case)	2		1	1	44	5	315
	Congenital rubella syndrome							
	Syphilis	37	41	39	15	1,251	62	4,935
	Disseminated cryptococcosis		1			15	2	134
	Tetanus			1		3		84
	Vancomycin-resistant <i>S. aureus</i> infection							
	Vancomycin-resistant <i>Enterococcus</i> infection			1		5	1	55
	Pertussis	78	76	74	62	1,218	175	6,571
Rubella	37	36	60	31	239	104	770	
Measles		1			15	2	209	
MDRA infection					3		16	

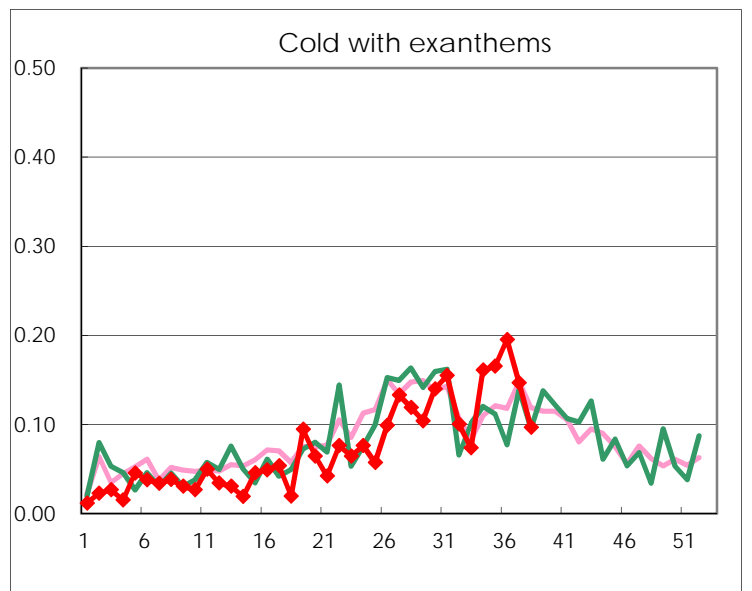
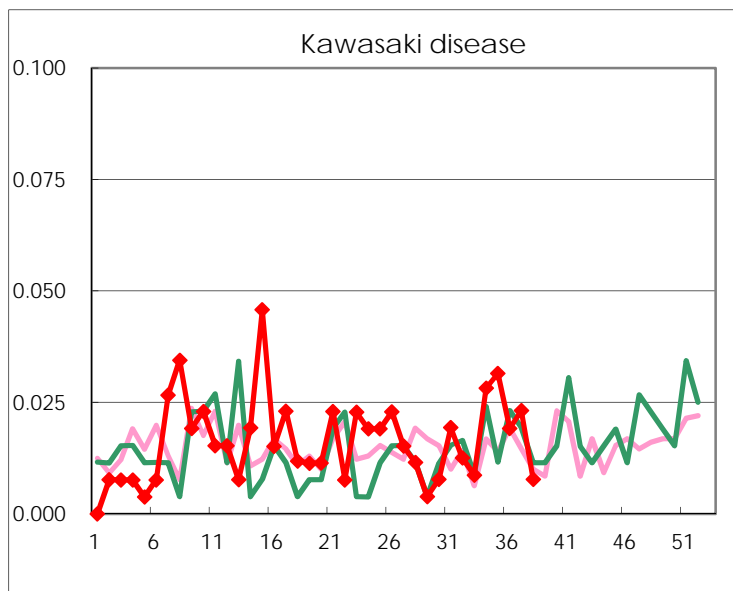
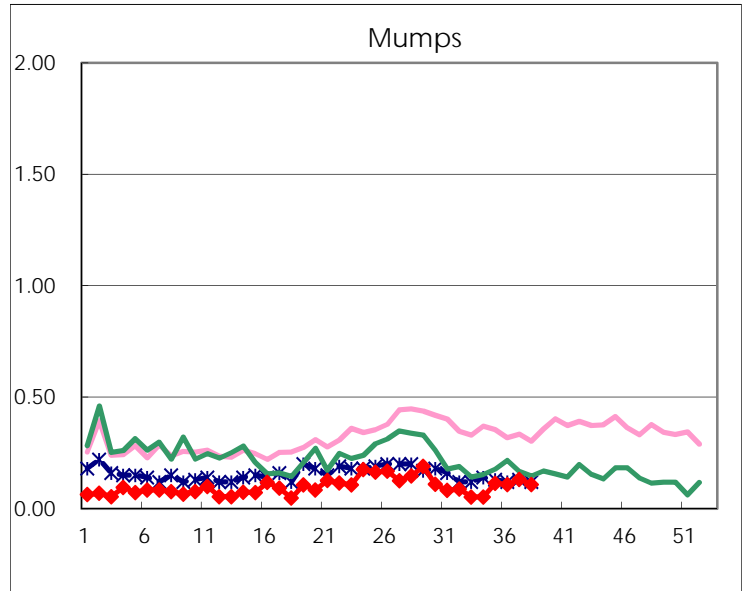
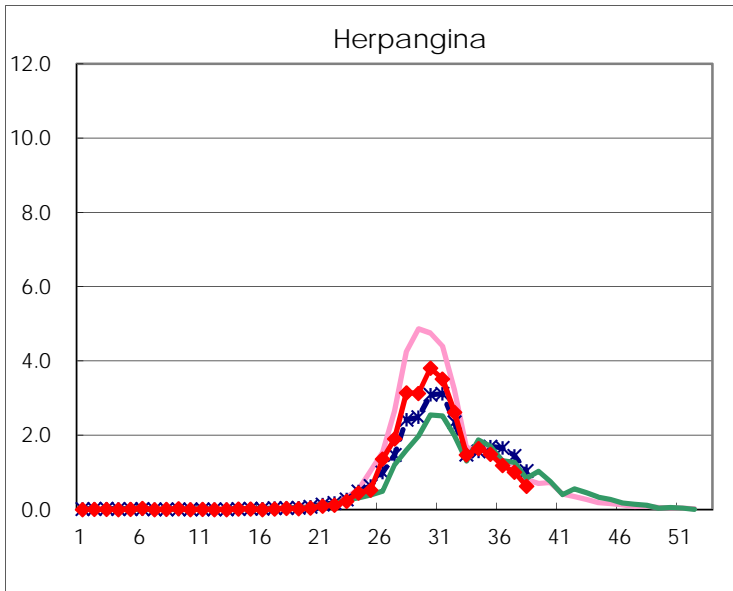
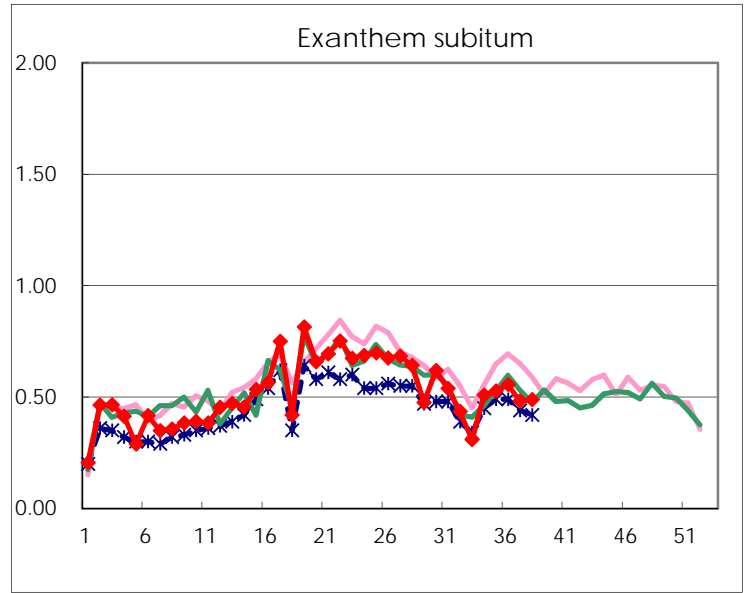
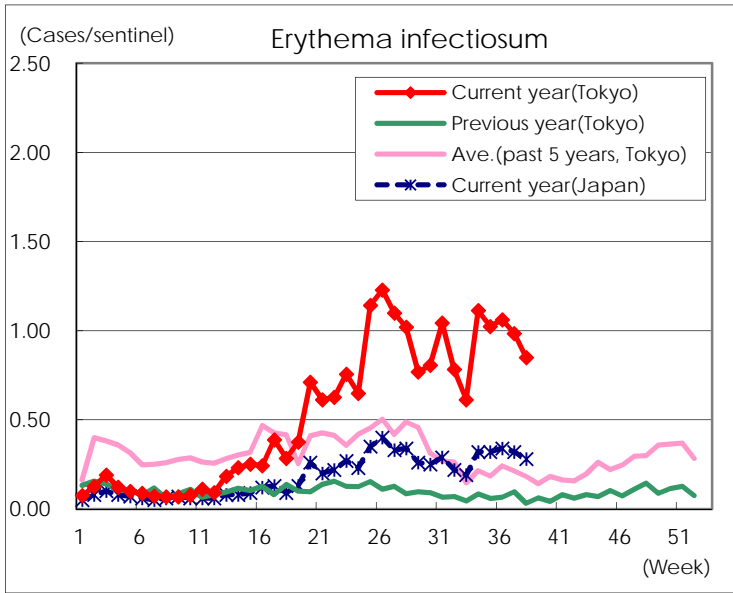
Number of patients with the diseases to be reported
by the designated clinics and hospitals

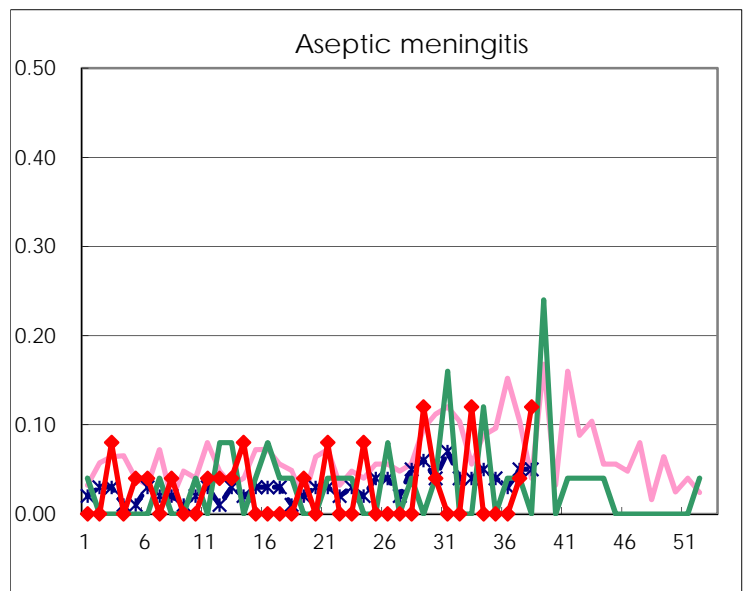
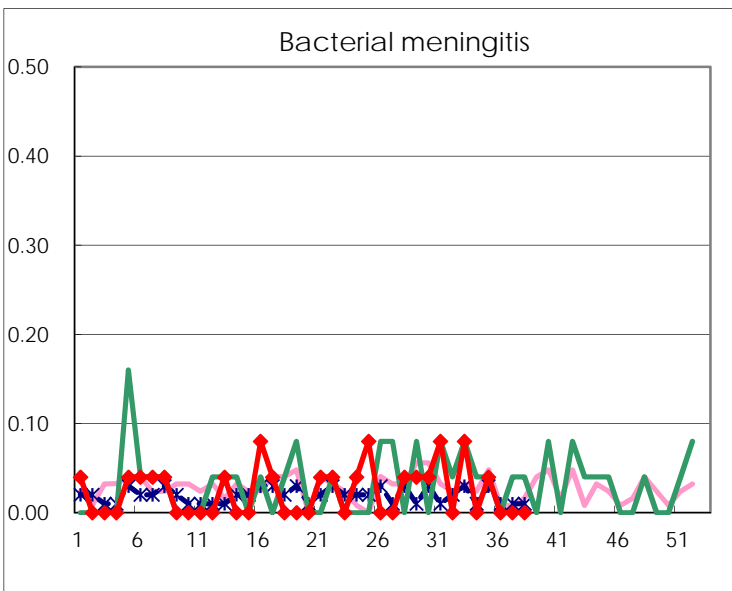
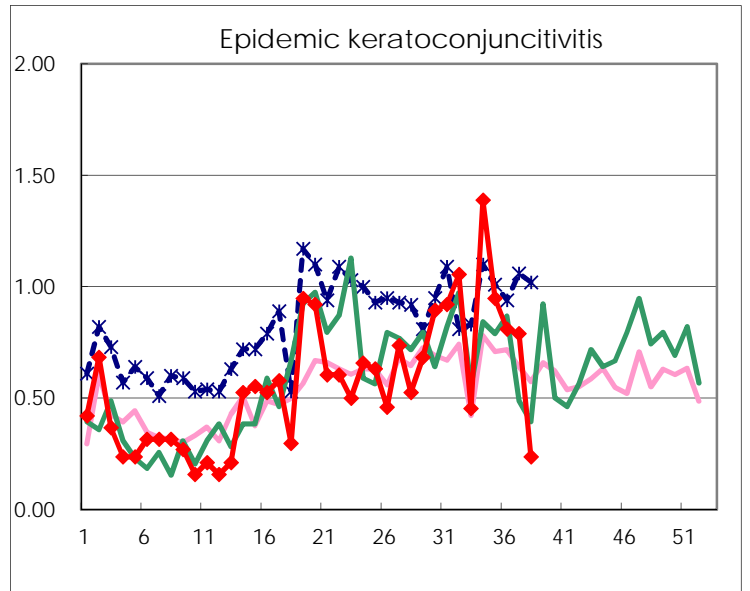
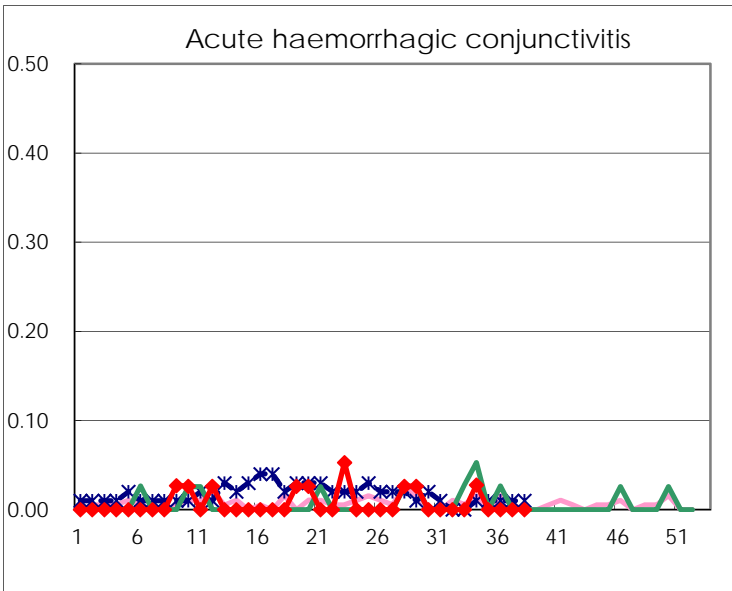
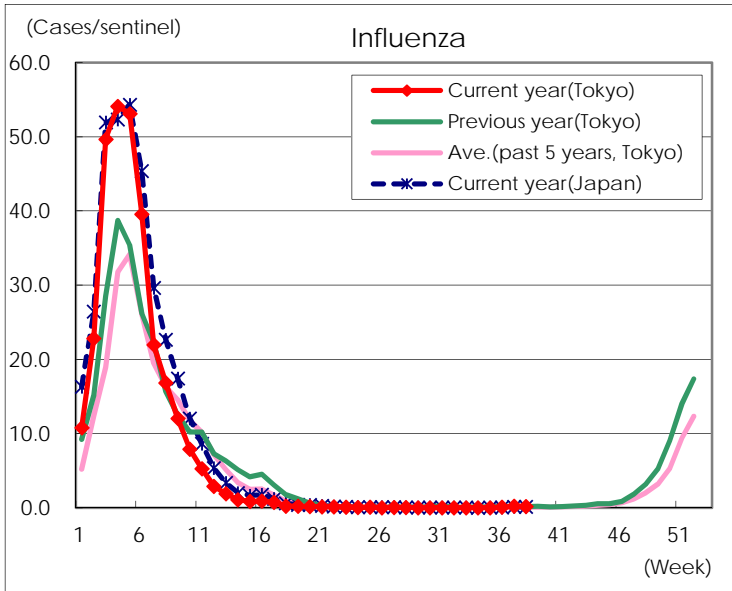
Diseases	Tokyo				
	35th	36th	37th	38th	/sentinel
Respiratory syncytial virus infection	509	544	549	362	1.40
Pharyngoconjunctival fever	68	63	75	50	0.19
Group A streptococcal pharyngitis	324	401	387	341	1.32
Infectious gastroenteritis	911	1,114	1,009	902	3.50
Chickenpox	45	57	41	54	0.21
Hand, foot, and mouth disease	229	298	348	321	1.24
Erythema infectiosum	260	277	255	219	0.85
Exanthem subitum	134	145	125	126	0.49
Herpangina	379	311	261	163	0.63
Mumps	29	28	34	28	0.11
Kawasaki disease	8	5	6	2	0.01
Cold with exanthems	42	51	38	25	0.10
Influenza	10	34	87	79	0.19
Acute hemorrhagic conjunctivitis					
Epidemic keratoconjunctivitis	36	30	30	9	0.24
Bacterial meningitis	1				
Aseptic meningitis			1	3	0.12
<i>Mycoplasma pneumoniae</i>	6	6	1	6	0.24
Chlamydial pneumonia (excluding psittacosis)	1				
Infectious gastroenteritis (only by Rotavirus)					
Influenza-Associated Hospitalizations				1	0.04

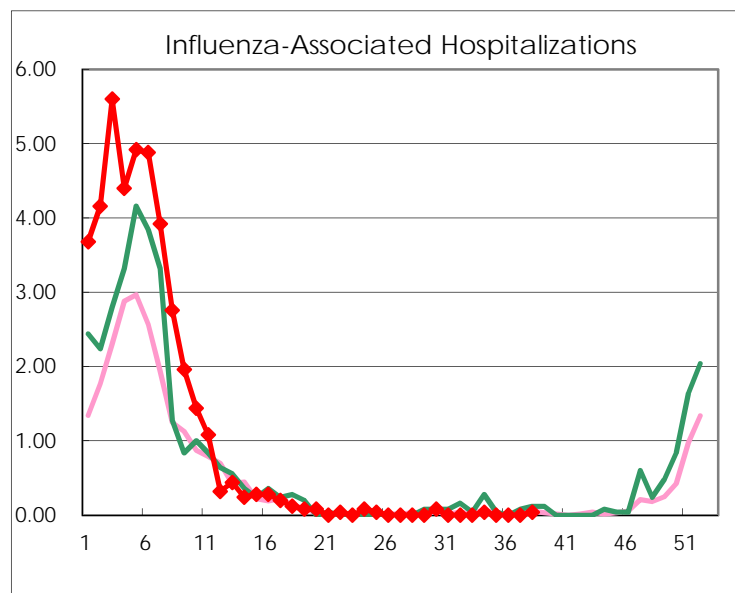
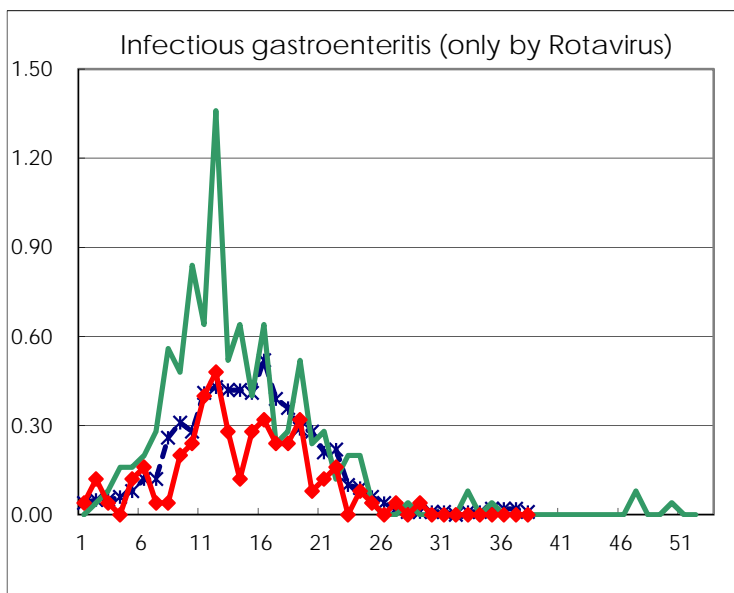
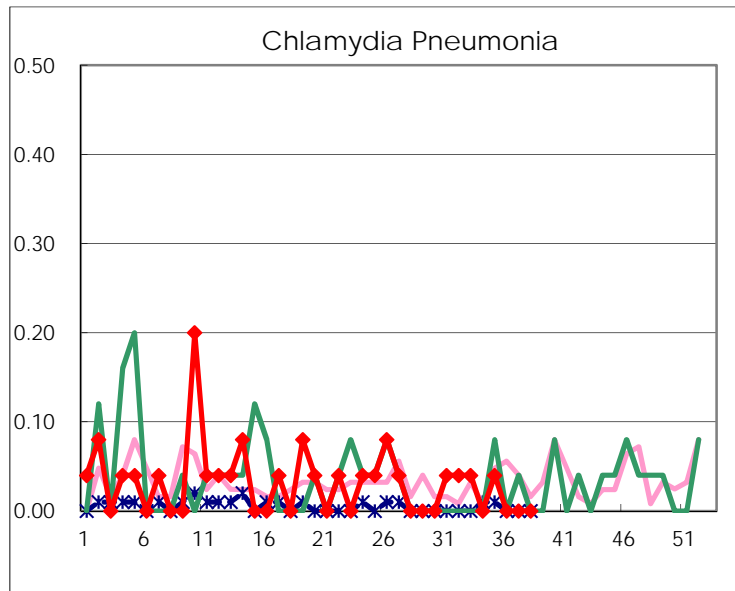
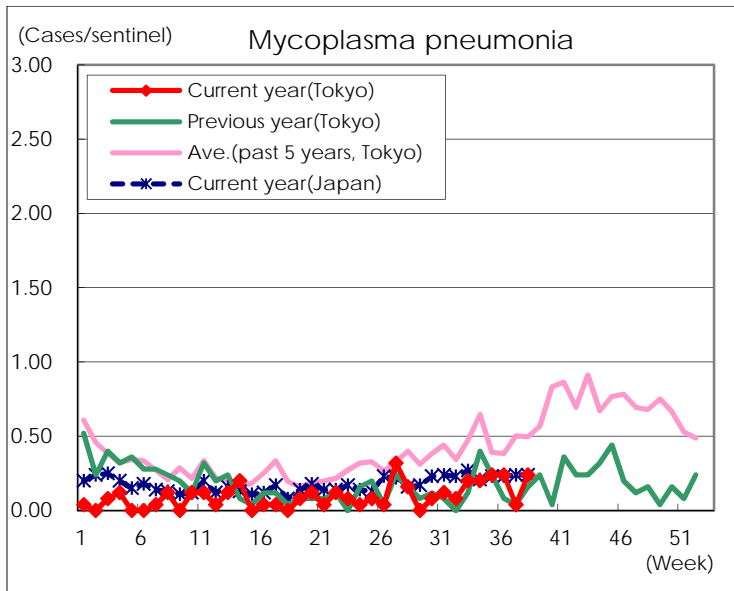
(Blank means 0.)

Disease Trend Graph (weekly reported cases per sentinel in comparison)









Number of sentinel facilities for weekly reporting		
Types of sentinels	Number of sentinels	Sentinels having reported
Pediatric	264	258
Influenza	419	410
Ophthalmic	39	38
Specially-designated	25	25