

4 October 2018 / Number 39

Surveillance System in Tokyo, Japan

The infectious diseases which all physicians must report

All physicians must report to health centers the incidence of the diseases which are shown at page one. Health centers electronically report the individual cases to Tokyo Metropolitan Infectious Disease Surveillance Center.

The infectious diseases required to be reported by the sentinels

The numbers of patients who visit the sentinel clinics or hospitals during a week are reported to health centers in Tokyo. And they electronically report the numbers to Tokyo Metropolitan Infectious Disease Surveillance Center. We have about 500 sentinel clinics and hospitals in Tokyo.

Tokyo Metropolitan Institute of Public Health

TEL:81-3-3363-3213 FAX:81-3-5332-7365

e-mail:www@tokyo-eiken.go.jp

URL:idsc.tokyo-eiken.go.jp/

Number of patients with the diseases which all physicians must report

Category	Diseases	Tokyo					Japan	
		36th	37th	38th	39th	Cum 2018	39th	Cum 2018
I	Ebola hemorrhagic fever							
	Crimean-Congo hemorrhagic fever							
	Smallpox							
	South American hemorrhagic fever							
	Plague							
	Marburg disease							
	Lassa fever							
II	Acute poliomyelitis							
	Tuberculosis	64	71	62	39	2,464	295	16,107
	Diphtheria							
	Severe Acute Respiratory Syndrome(SARS)							
	Middle East Respiratory Syndrome (MERS)							
	Avian influenza H5N1							
	Avian influenza H7N9							
III	Cholera							3
	Shigellosis	1	1	1	1	32	2	119
	Enterohemorrhagic Escherichia coli infection	15	18	12	12	383	74	3,205
	Typhoid fever			1		9	1	24
	Paratyphoid fever					7		17
IV	Hepatitis E	1	6	2	1	71	7	334
	West Nile fever							
	Hepatitis A	6	10	7	4	359	15	784
	Echinococcosis							9
	Yellow fever							
	Psittacosis					1		5
	Omsk hemorrhagic fever							
	Relapsing fever							5
	Kyasanur forest disease							
	Q fever					2		3
	Rabies							
	Coccidioidomycosis							2
	Monkeypox							
	Zika virus infection							
	Severe Fever with Thrombocytopenia Syndrome						2	64
	Hemorrhagic fever with renal syndrome							
	Western equine encephalitis							
	Tick-borne encephalitis							1
	Anthrax							
	Chikungunya fever							3
	Scrub typhus(Tsutsugamushi disease)					4	1	99
	Dengue fever	2	3	2	2	43	8	139
	Eastern equine encephalitis							
	Avian influenza (excluding H5N1 and H7N9)							
	Nipah virus infection							
	Japanese spotted fever						13	212
	Japanese encephalitis							
	Hantavirus pulmonary syndrome							
	Herpes B virus infection							
	Glanders							
	Brucellosis							3
	Venezuelan equine encephalitis							
	Hendra virus infection							
Epidemic typhus								
Botulism					1		2	
Malaria	1			1	13	1	39	
Tularemia								
Lyme disease	1				1		10	
Lyssavirus infection(excluding rabies)								
Rift valley fever								
Melioidosis					1		2	
Legionellosis	4	6	9	10	119	81	1,537	
Leptospirosis				2	3	5	20	
Rocky mountain spotted fever								

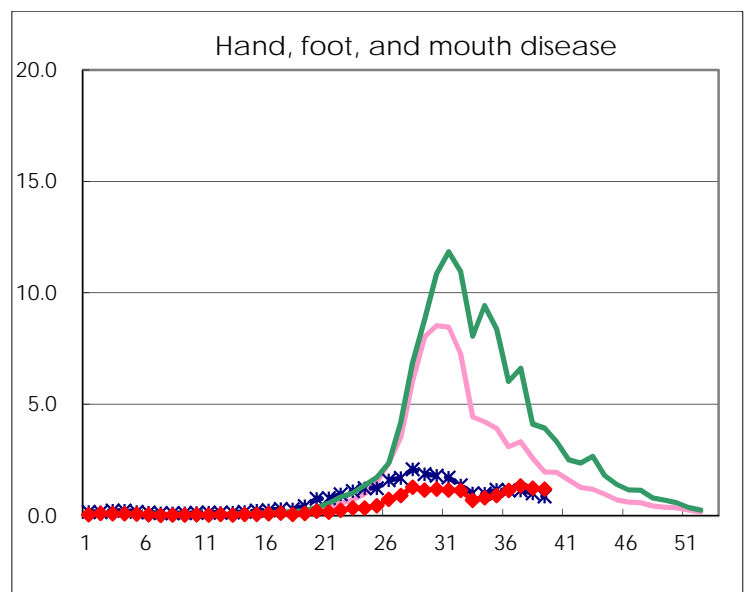
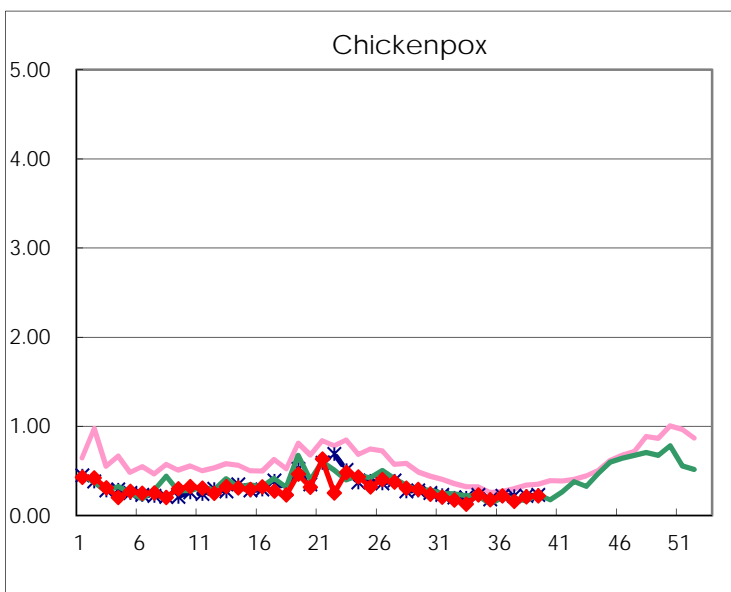
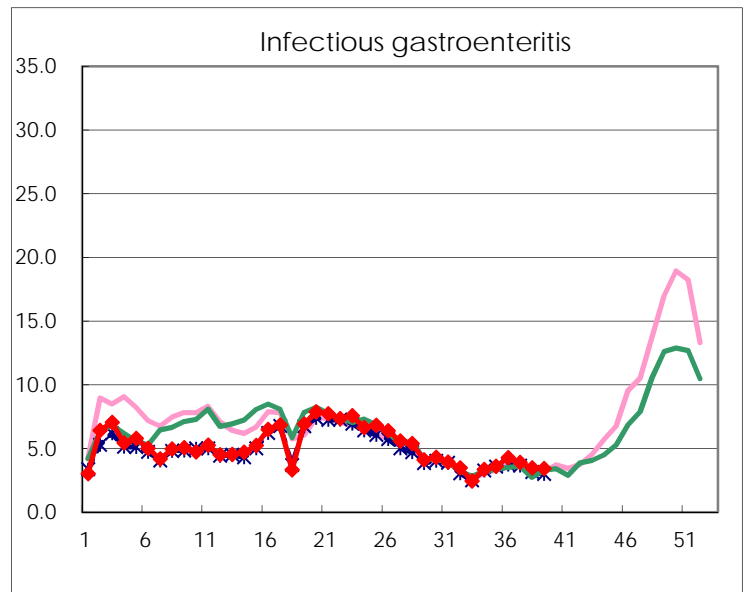
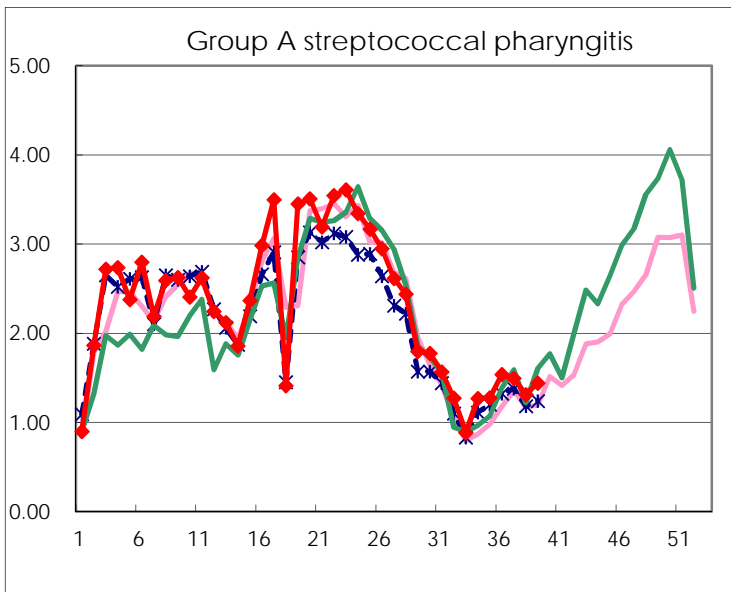
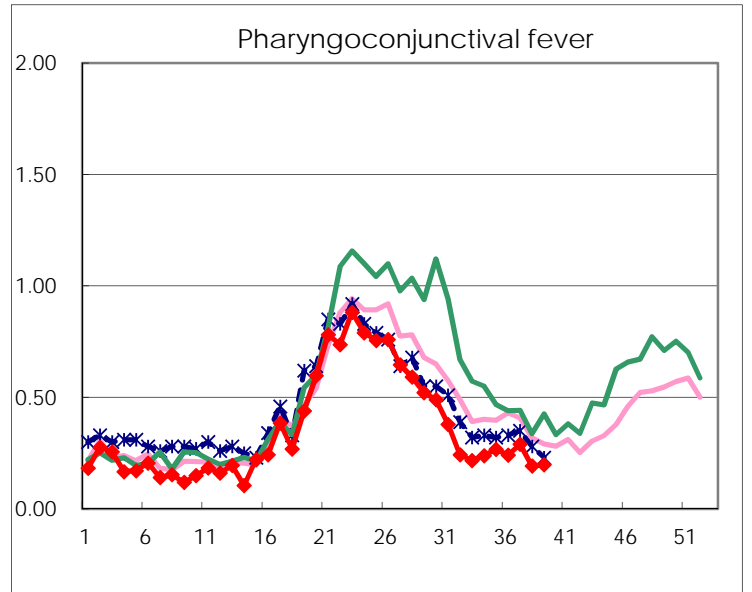
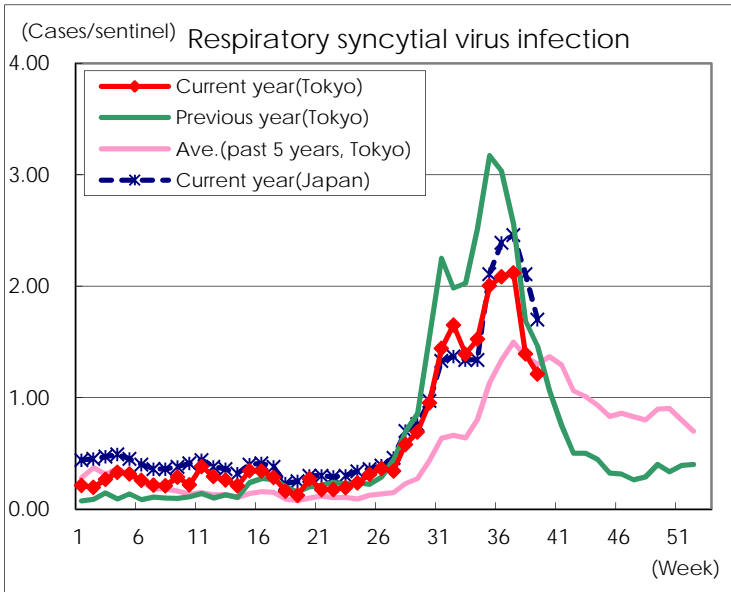
Category	Diseases	Tokyo					Japan	
		36th	37th	38th	39th	Cum 2018	39th	Cum 2018
V	Amebiasis	3	4	3	4	122	12	629
	Viral hepatitis(excluding hepatitis A and E)	1	3	1	2	43	4	173
	CRE infection	7	6	4	6	151	30	1,528
	Acute Flaccid Paralysis (excluding Acute poliomyelitis)					3	3	44
	Acute encephalitis(excluding JE and WNE)	1			1	49	2	516
	Cryptosporidiosis					3		11
	Creutzfeldt-Jakob disease		1		1	18	1	157
	Severe invasive streptococcal infections(TSLs)	1	4		3	70	9	533
	Acquired immunodeficiency syndrome (AIDS)	8	4	10	8	301	12	970
	Giardiasis	1		1		16		55
	Invasive <i>Haemophilus influenzae</i> disease	1		1	1	26	4	360
	Invasive meningococcal disease					6		28
	Invasive pneumococcal disease	3	2	2	2	287	15	2,429
	Varicella (limited to hospitalized case)		1	1	1	45	2	319
	Congenital rubella syndrome							
	Syphilis	41	39	22	34	1,292	88	5,081
	Disseminated cryptococcosis	1				15		137
	Tetanus		1		2	5	2	89
	Vancomycin-resistant <i>S. aureus</i> infection							
	Vancomycin-resistant <i>Enterococcus</i> infection		1			5	2	57
	Pertussis	76	74	66	63	1,285	214	6,941
	Rubella	36	60	50	49	307	134	952
Measles	1				15	4	214	
MDRA infection					3	1	17	

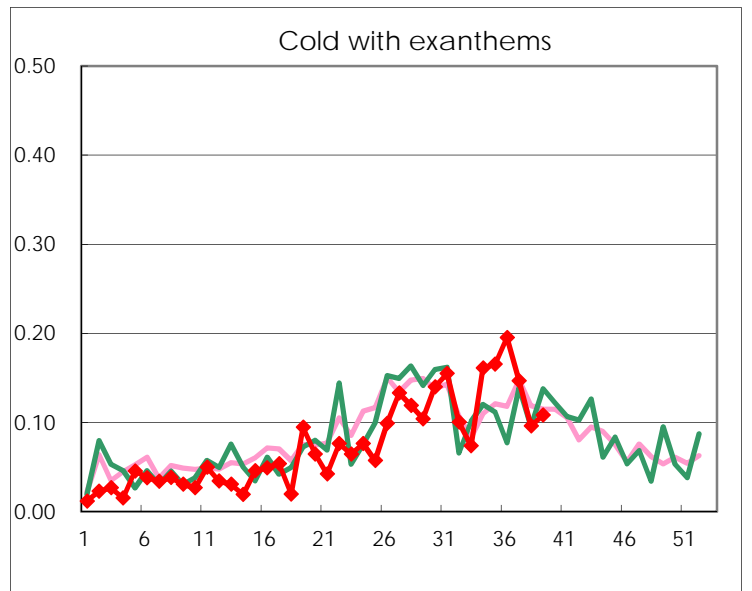
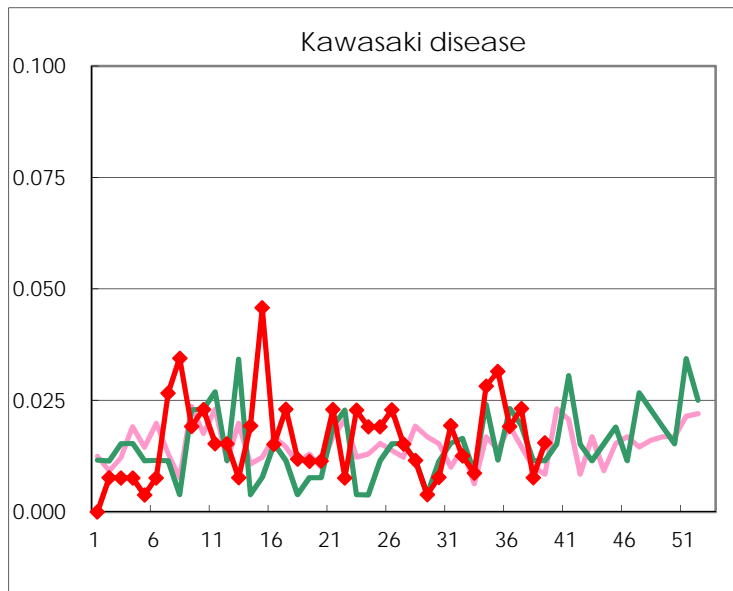
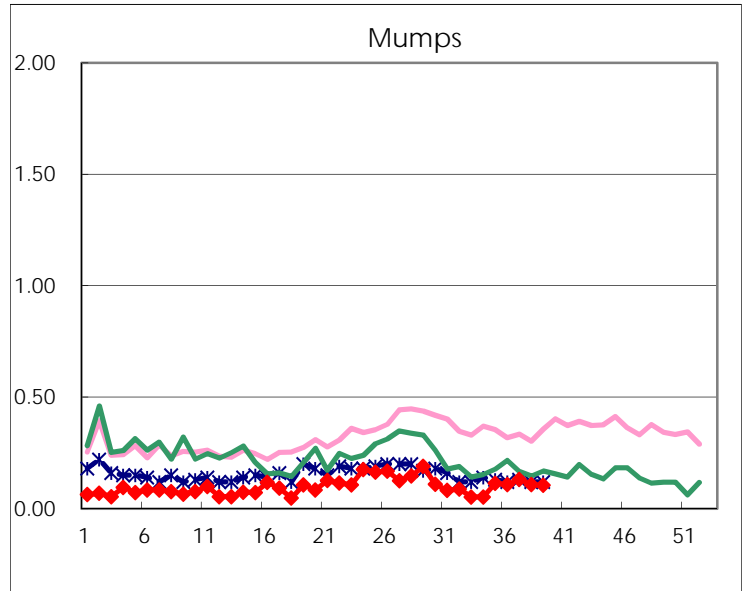
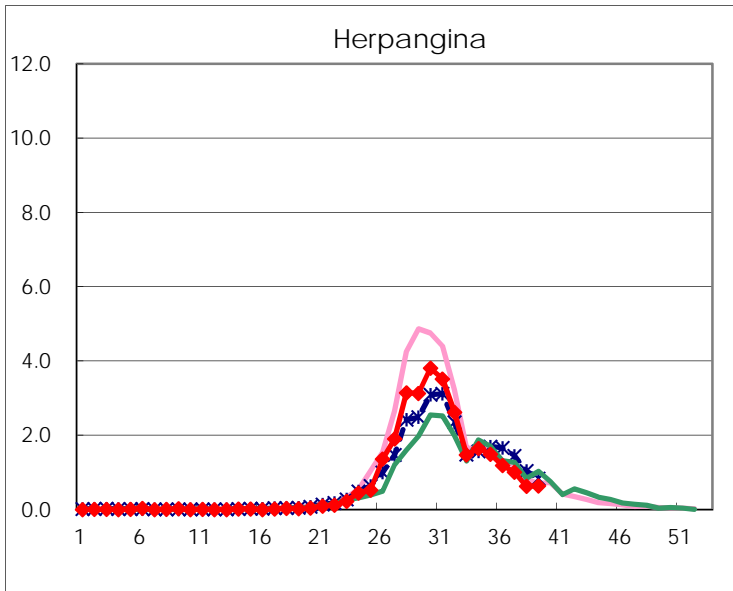
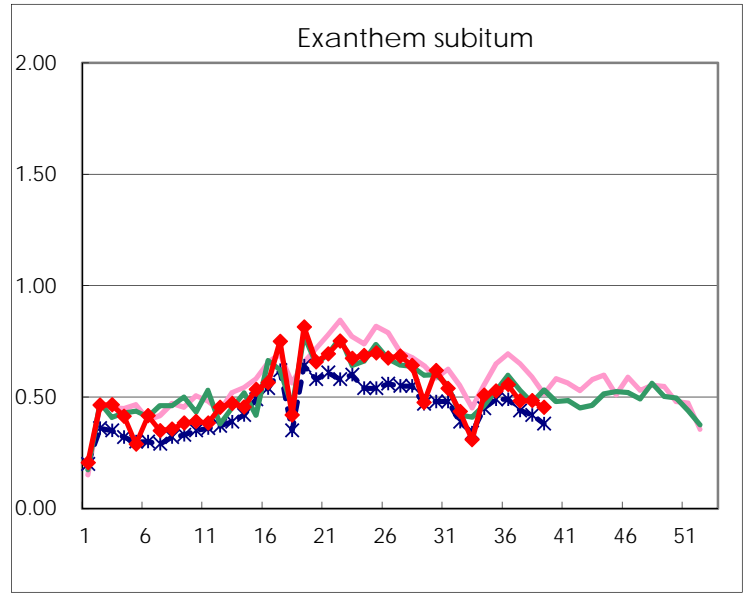
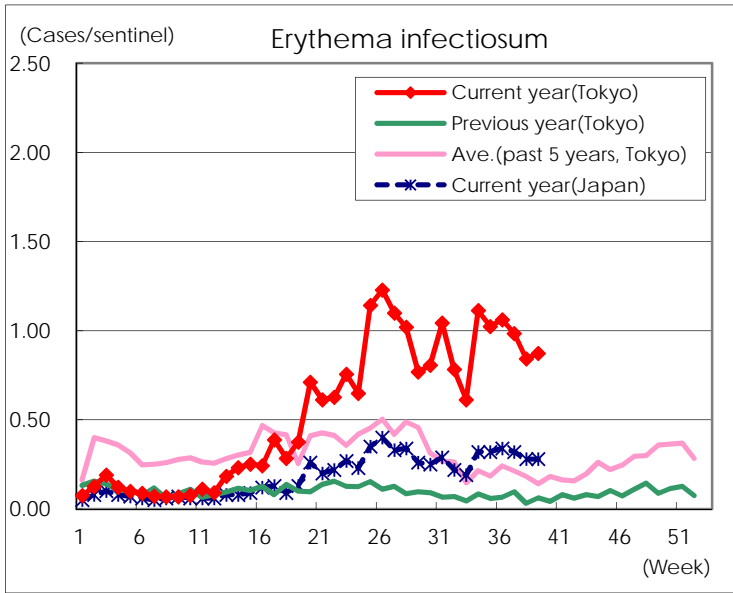
Number of patients with the diseases to be reported
by the designated clinics and hospitals

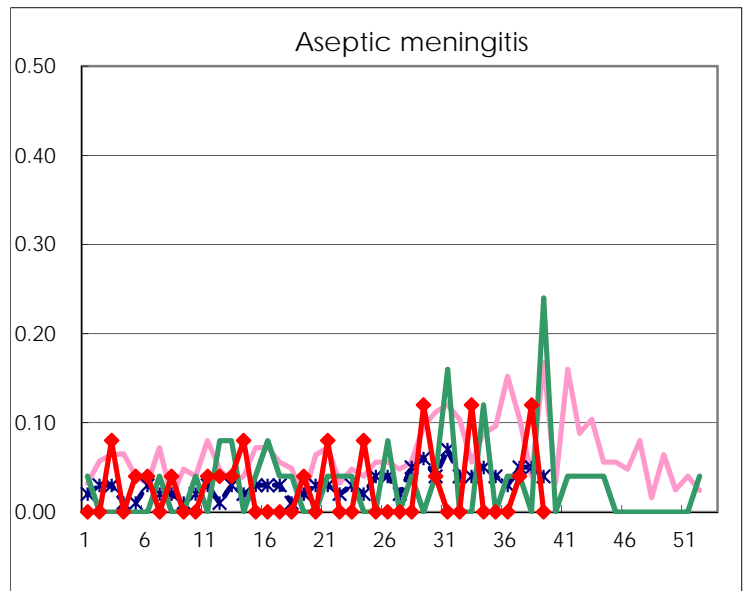
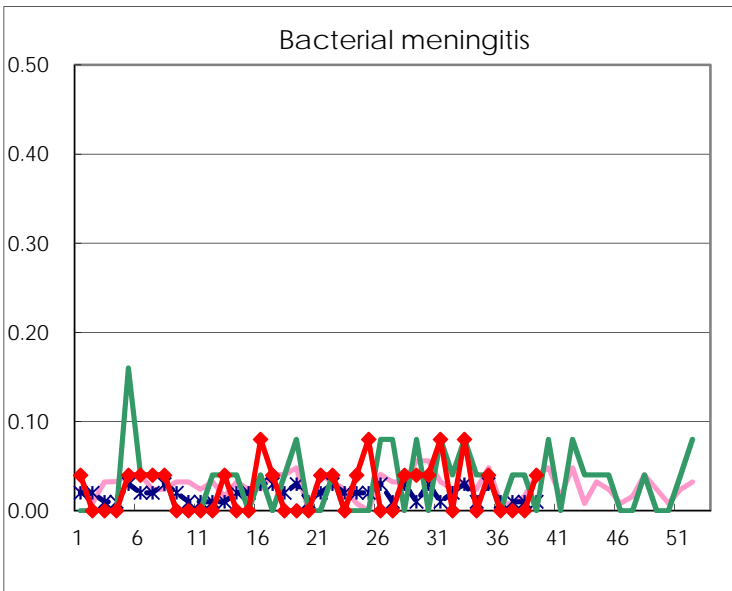
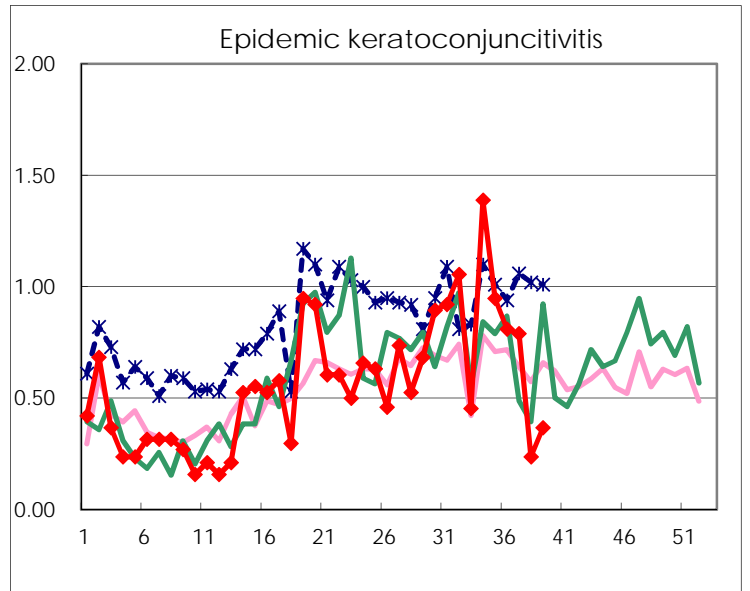
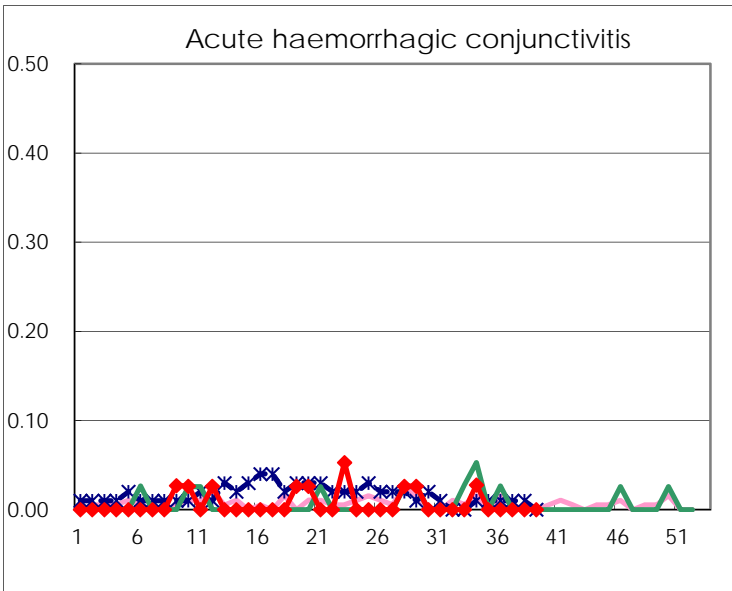
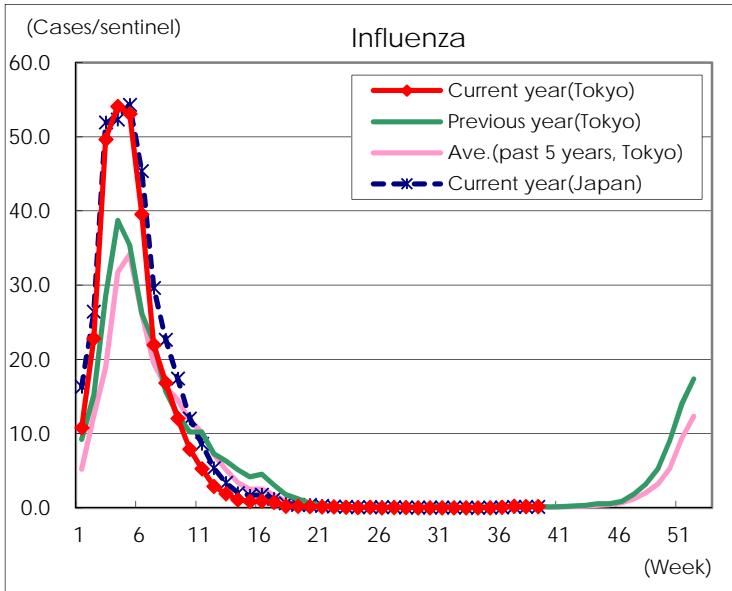
Diseases	Tokyo				
	36th	37th	38th	39th	/sentinel
Respiratory syncytial virus infection	544	549	362	313	1.21
Pharyngoconjunctival fever	63	75	50	51	0.20
Group A streptococcal pharyngitis	401	387	341	372	1.44
Infectious gastroenteritis	1,114	1,009	902	884	3.43
Chickenpox	57	41	54	57	0.22
Hand, foot, and mouth disease	298	348	321	308	1.19
Erythema infectiosum	277	255	219	225	0.87
Exanthem subitum	145	125	126	117	0.45
Herpangina	311	261	163	165	0.64
Mumps	28	34	28	27	0.10
Kawasaki disease	5	6	2	4	0.02
Cold with exanthems	51	38	25	28	0.11
Influenza	34	87	79	71	0.17
Acute hemorrhagic conjunctivitis					
Epidemic keratoconjunctivitis	30	30	9	14	0.37
Bacterial meningitis				1	0.04
Aseptic meningitis		1	3		
<i>Mycoplasma pneumoniae</i>	6	1	6	7	0.28
Chlamydial pneumonia (excluding psittacosis)				2	0.08
Infectious gastroenteritis (only by Rotavirus)					
Influenza-Associated Hospitalizations			1		

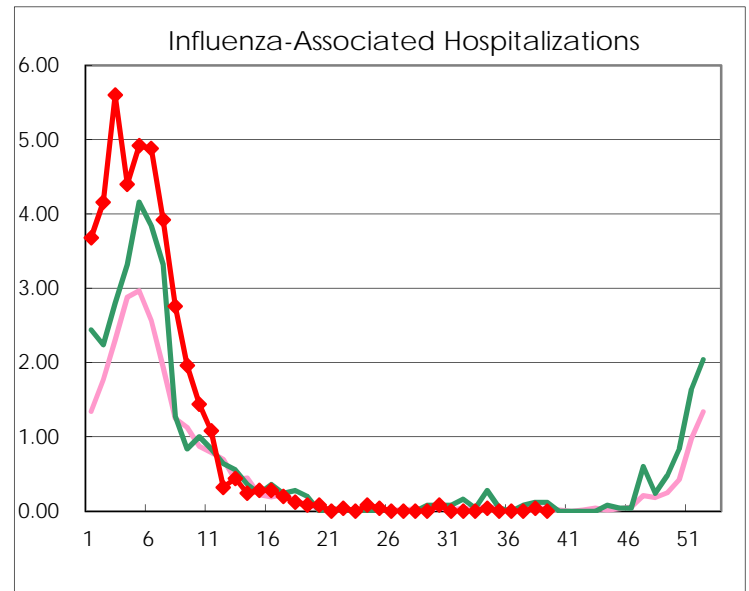
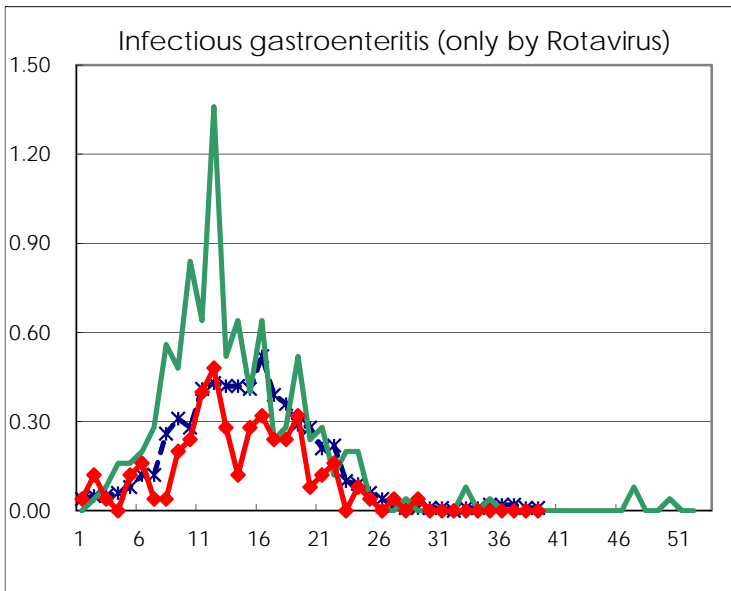
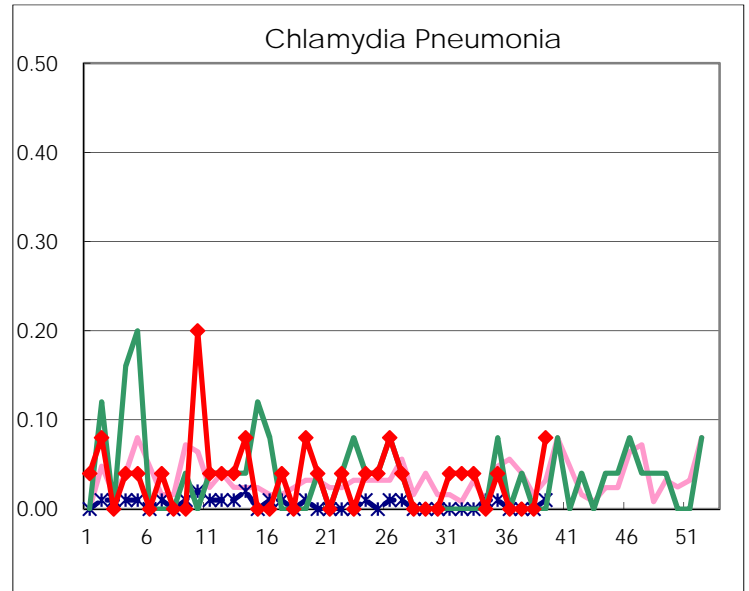
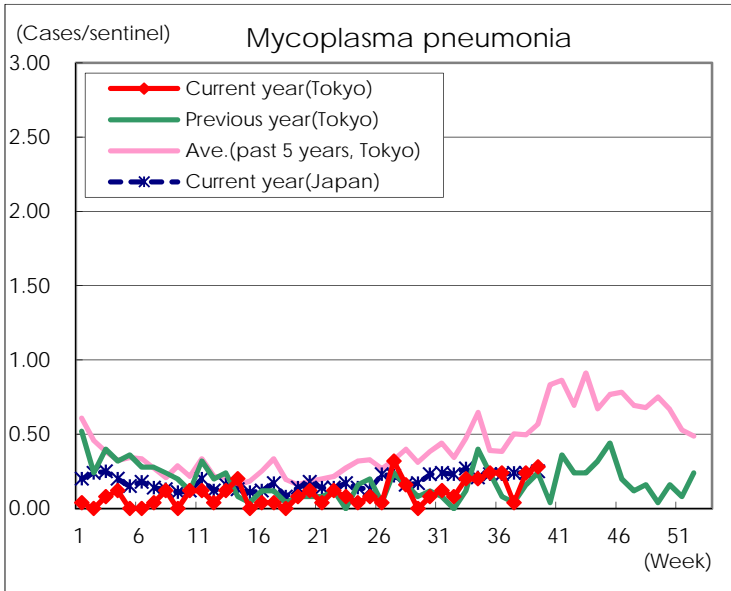
(Blank means 0.)

Disease Trend Graph (weekly reported cases per sentinel in comparison)









Number of sentinel facilities for weekly reporting		
Types of sentinels	Number of sentinels	Sentinels having reported
Pediatric	264	258
Influenza	419	412
Ophthalmic	39	38
Specially-designated	25	25