

**11 October 2018 / Number 40**

## Surveillance System in Tokyo, Japan

The infectious diseases which all physicians must report

All physicians must report to health centers the incidence of the diseases which are shown at page one. Health centers electronically report the individual cases to Tokyo Metropolitan Infectious Disease Surveillance Center.

The infectious diseases required to be reported by the sentinels

The numbers of patients who visit the sentinel clinics or hospitals during a week are reported to health centers in Tokyo. And they electronically report the numbers to Tokyo Metropolitan Infectious Disease Surveillance Center. We have about 500 sentinel clinics and hospitals in Tokyo.

Tokyo Metropolitan Institute of Public Health

TEL:81-3-3363-3213 FAX:81-3-5332-7365

e-mail:[www@tokyo-eiken.go.jp](mailto:www@tokyo-eiken.go.jp)

URL:[idsc.tokyo-eiken.go.jp/](http://idsc.tokyo-eiken.go.jp/)

---

Number of patients with the diseases which all physicians must report

Category	Diseases	Tokyo					Japan	
		37th	38th	39th	40th	Cum 2018	40th	Cum 2018
I	Ebola hemorrhagic fever							
	Crimean-Congo hemorrhagic fever							
	Smallpox							
	South American hemorrhagic fever							
	Plague							
	Marburg disease							
	Lassa fever							
II	Acute poliomyelitis							
	Tuberculosis	71	65	46	40	2,516	318	16,515
	Diphtheria							
	Severe Acute Respiratory Syndrome(SARS)							
	Middle East Respiratory Syndrome (MERS)							
	Avian influenza H5N1							
	Avian influenza H7N9							
III	Cholera							3
	Shigellosis	1	1	1	1	33	4	123
	Enterohemorrhagic Escherichia coli infection	18	12	13	9	393	90	3,322
	Typhoid fever		1			9		25
	Paratyphoid fever					7	1	18
IV	Hepatitis E	6	2	1	3	74	5	341
	West Nile fever							
	Hepatitis A	10	7	4	8	367	12	801
	Echinococcosis							9
	Yellow fever							
	Psittacosis					1		5
	Omsk hemorrhagic fever							
	Relapsing fever							5
	Kyasanur forest disease							
	Q fever					2		3
	Rabies							
	Coccidioidomycosis							2
	Monkeypox							
	Zika virus infection							
	Severe Fever with Thrombocytopenia Syndrome						2	67
	Hemorrhagic fever with renal syndrome							
	Western equine encephalitis							
	Tick-borne encephalitis							1
	Anthrax							
	Chikungunya fever							3
	Scrub typhus(Tsutsugamushi disease)					4		99
	Dengue fever	3	2	5	1	47	2	145
	Eastern equine encephalitis							
	Avian influenza (excluding H5N1 and H7N9)							
	Nipah virus infection							
	Japanese spotted fever						11	226
	Japanese encephalitis							
	Hantavirus pulmonary syndrome							
	Herpes B virus infection							
	Glanders							
	Brucellosis							3
	Venezuelan equine encephalitis							
	Hendra virus infection							
Epidemic typhus								
Botulism					1		2	
Malaria			1		13	1	40	
Tularemia								
Lyme disease					1		11	
Lyssavirus infection(excluding rabies)								
Rift valley fever								
Melioidosis					1		2	
Legionellosis	6	9	10	5	124	74	1,620	
Leptospirosis			2		3	2	23	
Rocky mountain spotted fever								

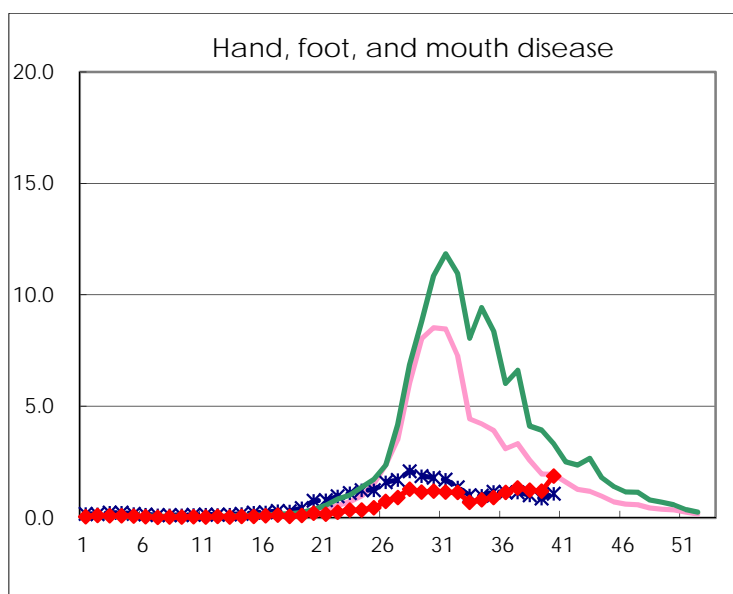
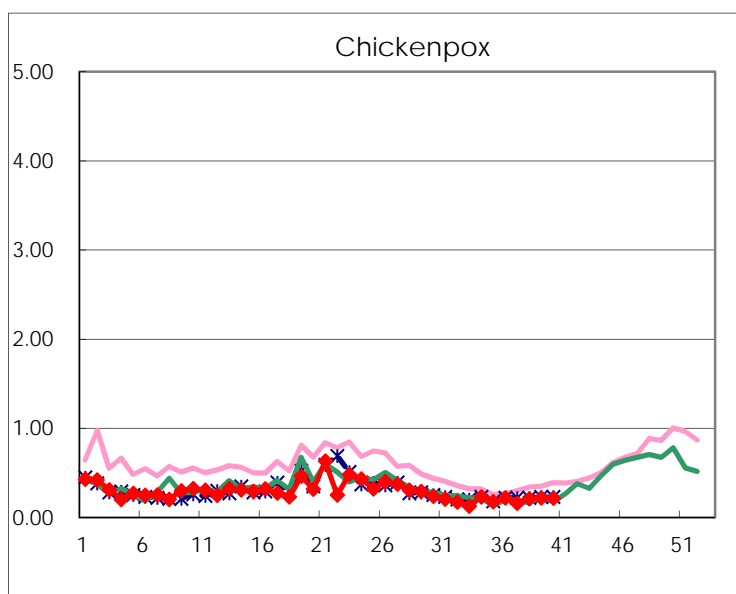
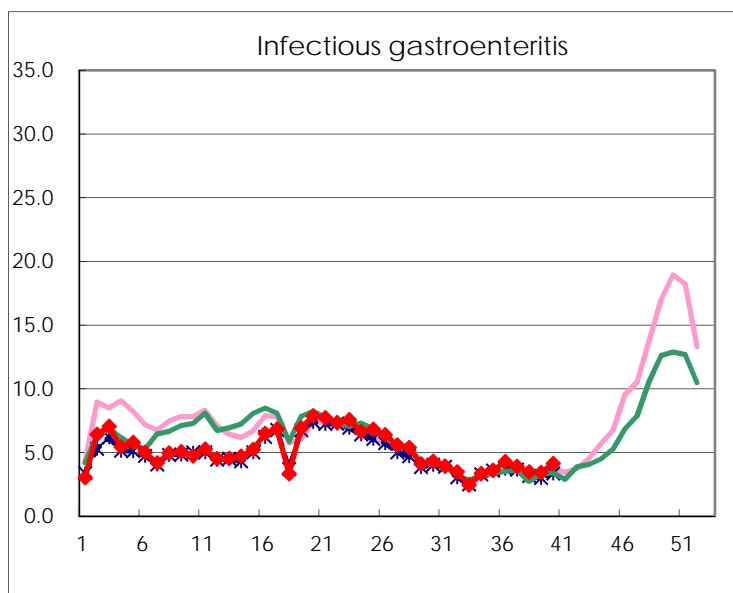
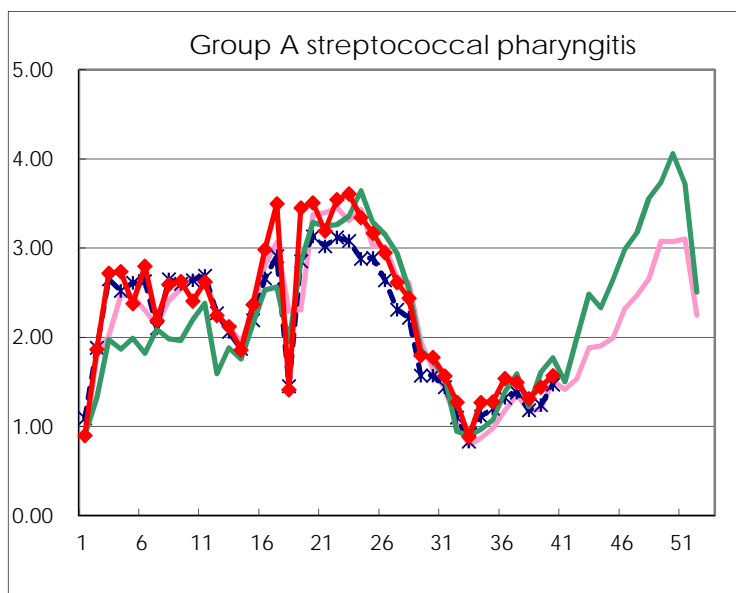
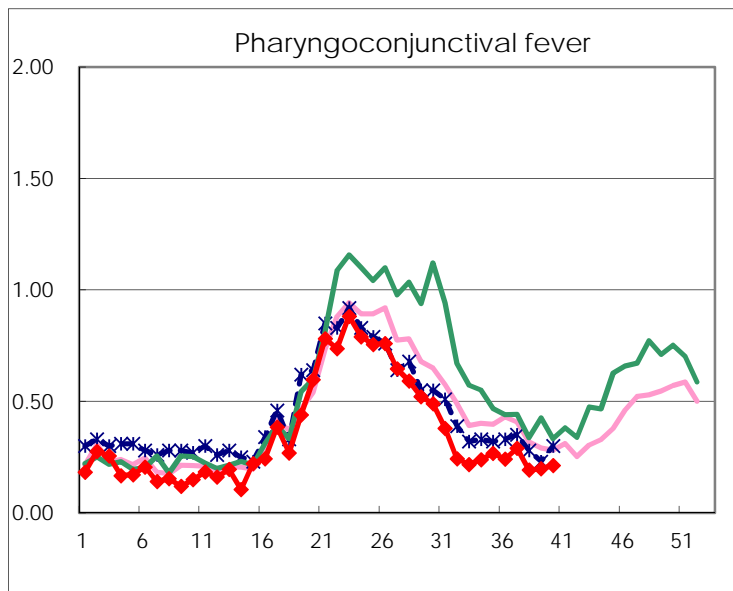
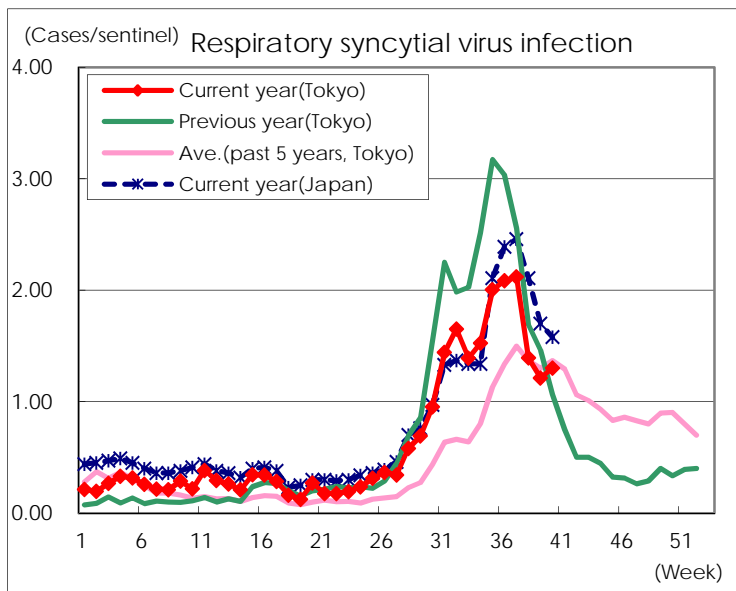
Category	Diseases	Tokyo					Japan	
		37th	38th	39th	40th	Cum 2018	40th	Cum 2018
V	Amebiasis	4	3	4	3	125	9	641
	Viral hepatitis(excluding hepatitis A and E)	3	1	2	2	45	2	178
	CRE infection	8	5	6	8	162	30	1,589
	Acute Flaccid Paralysis (excluding Acute poliomyelitis)					3	4	51
	Acute encephalitis(excluding JE and WNE)			1		49	4	521
	Cryptosporidiosis					3		12
	Creutzfeldt-Jakob disease	1		1		18	2	160
	Severe invasive streptococcal infections(TSLs)	4		3	1	71	4	540
	Acquired immunodeficiency syndrome (AIDS)	4	10	8	9	310	14	990
	Giardiasis		1			16	1	57
	Invasive <i>Haemophilus influenzae</i> disease		1	1	3	29	7	369
	Invasive meningococcal disease					6		28
	Invasive pneumococcal disease	2	2	2	4	291	23	2,467
	Varicella (limited to hospitalized case)	1	1	1	2	47	7	329
	Congenital rubella syndrome							
	Syphilis	39	22	35	30	1,323	81	5,212
	Disseminated cryptococcosis					15	1	140
	Tetanus	1		2		5	4	93
	Vancomycin-resistant <i>S. aureus</i> infection							
	Vancomycin-resistant <i>Enterococcus</i> infection	1				5	3	60
	Pertussis	74	66	64	66	1,352	215	7,271
Rubella	60	50	51	53	362	135	1,103	
Measles					15	9	223	
MDRA infection					3	2	19	

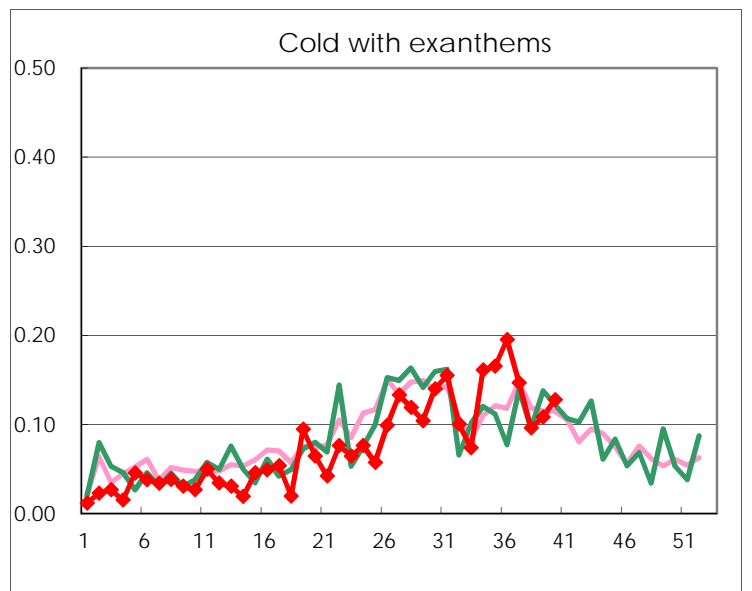
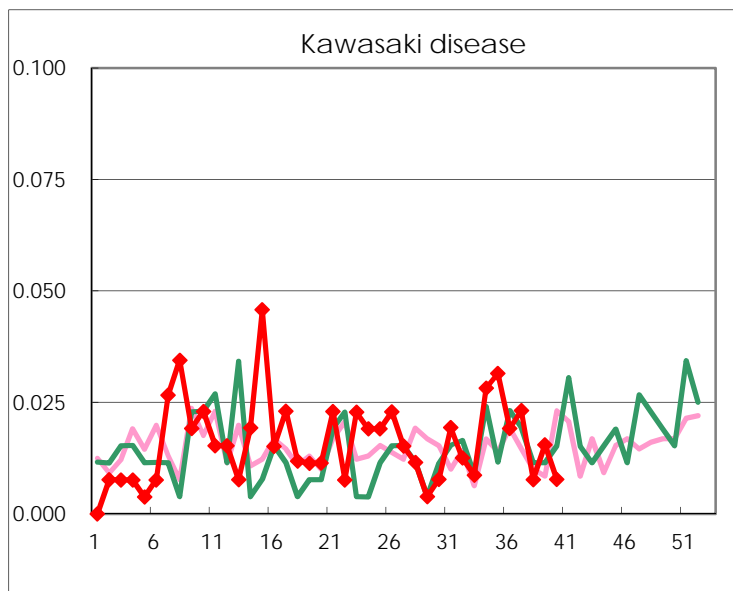
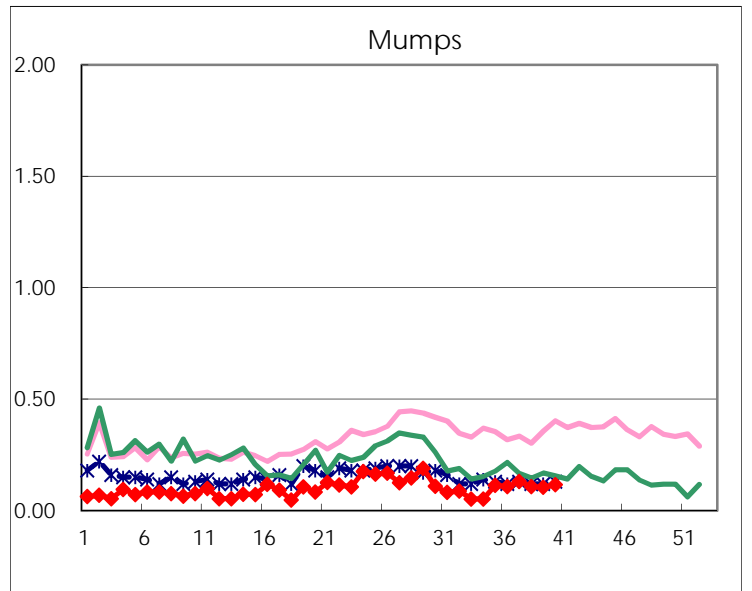
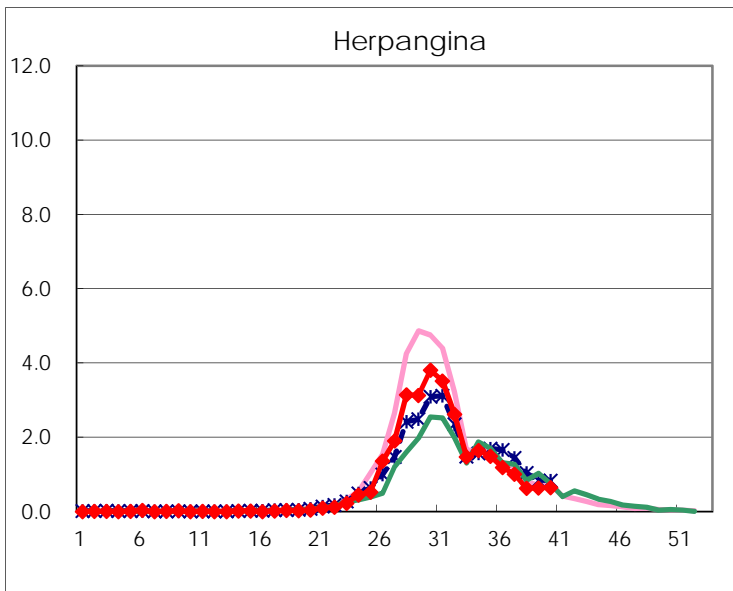
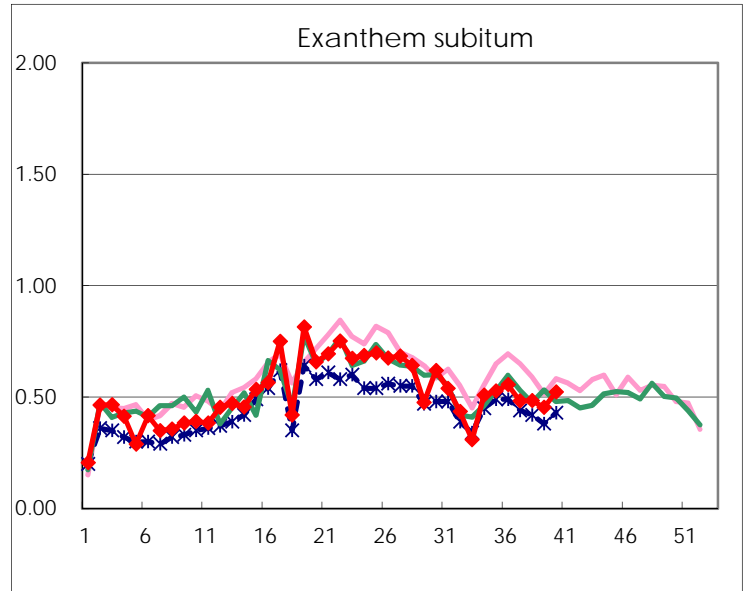
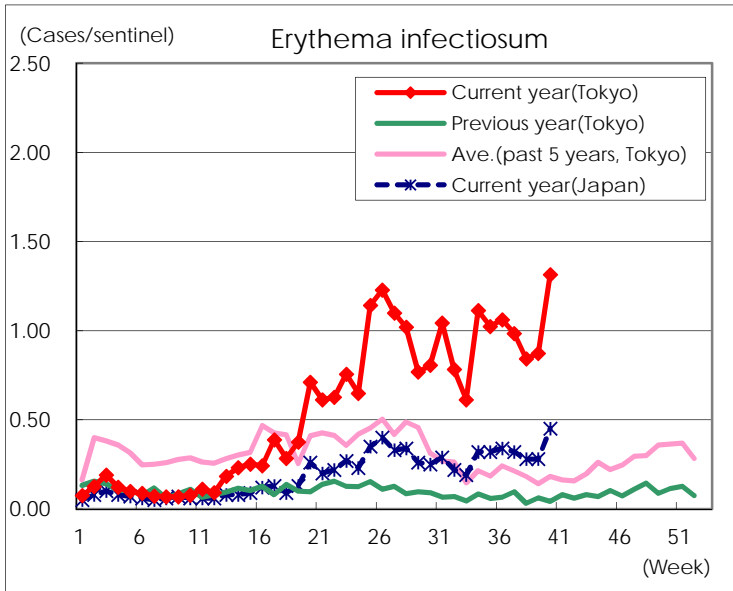
Number of patients with the diseases to be reported  
by the designated clinics and hospitals

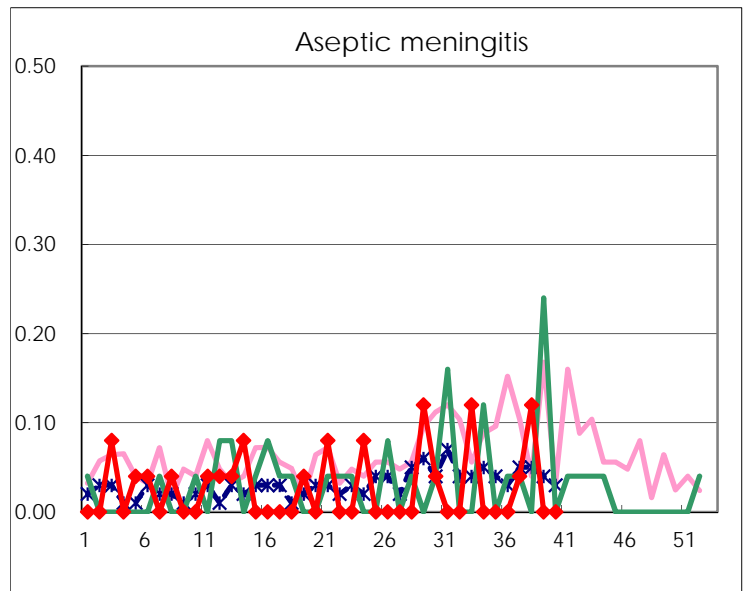
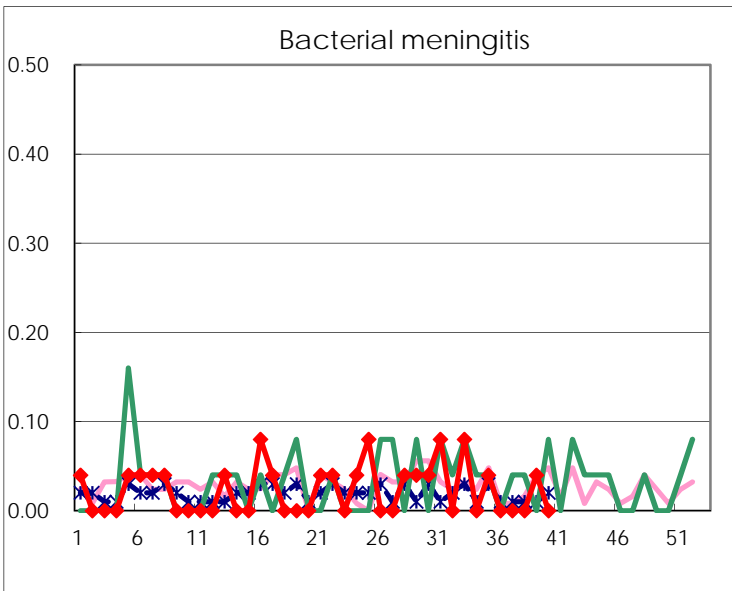
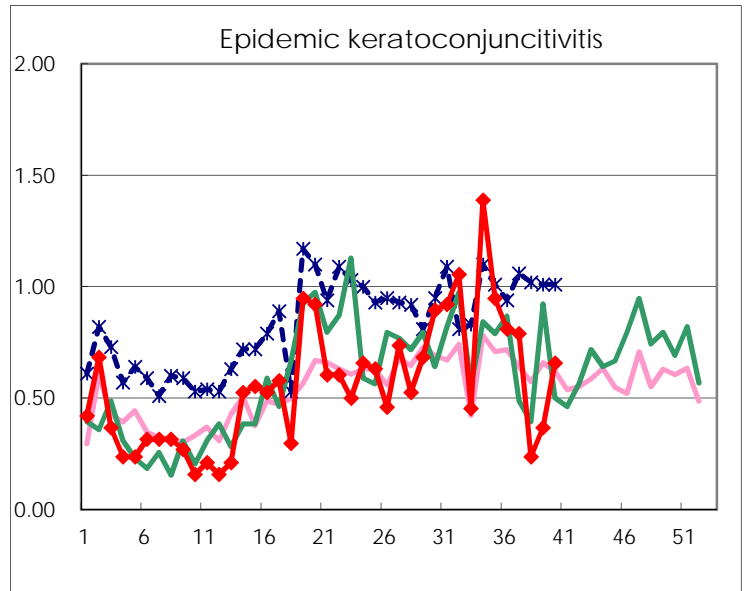
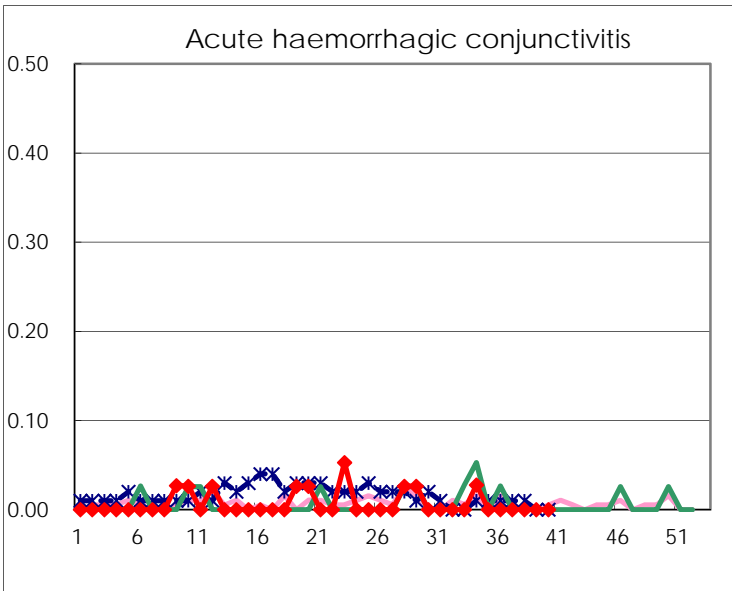
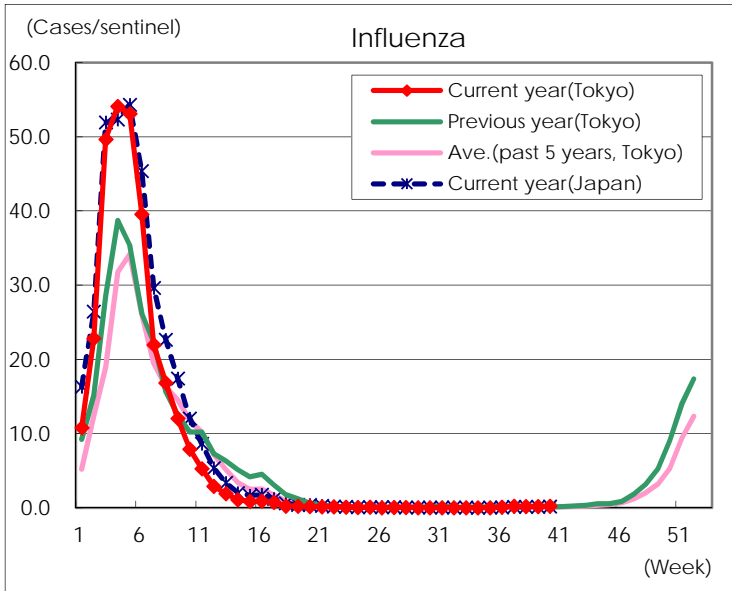
Diseases	Tokyo				
	37th	38th	39th	40th	/sentinel
Respiratory syncytial virus infection	549	362	313	336	1.30
Pharyngoconjunctival fever	75	50	51	55	0.21
Group A streptococcal pharyngitis	387	341	372	405	1.57
Infectious gastroenteritis	1,009	902	884	1,067	4.14
Chickenpox	41	54	57	56	0.22
Hand, foot, and mouth disease	348	321	308	483	1.87
Erythema infectiosum	255	219	225	339	1.31
Exanthem subitum	125	126	117	135	0.52
Herpangina	261	163	165	168	0.65
Mumps	34	28	27	30	0.12
Kawasaki disease	6	2	4	2	0.01
Cold with exanthems	38	25	28	33	0.13
Influenza	87	79	71	100	0.24
Acute hemorrhagic conjunctivitis					
Epidemic keratoconjunctivitis	30	9	14	25	0.66
Bacterial meningitis			1		
Aseptic meningitis	1	3			
<i>Mycoplasma pneumoniae</i>	1	6	7	4	0.16
Chlamydial pneumonia (excluding psittacosis)			2		
Infectious gastroenteritis (only by Rotavirus)					
Influenza-Associated Hospitalizations		1		1	0.04

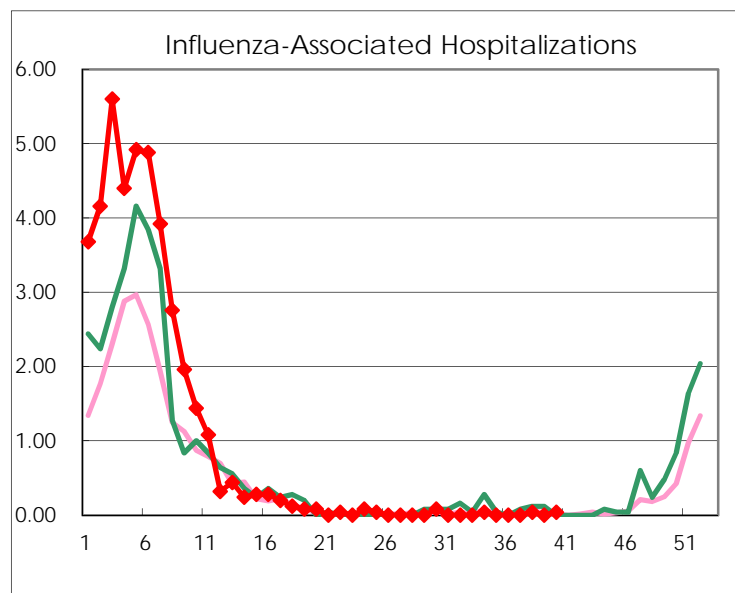
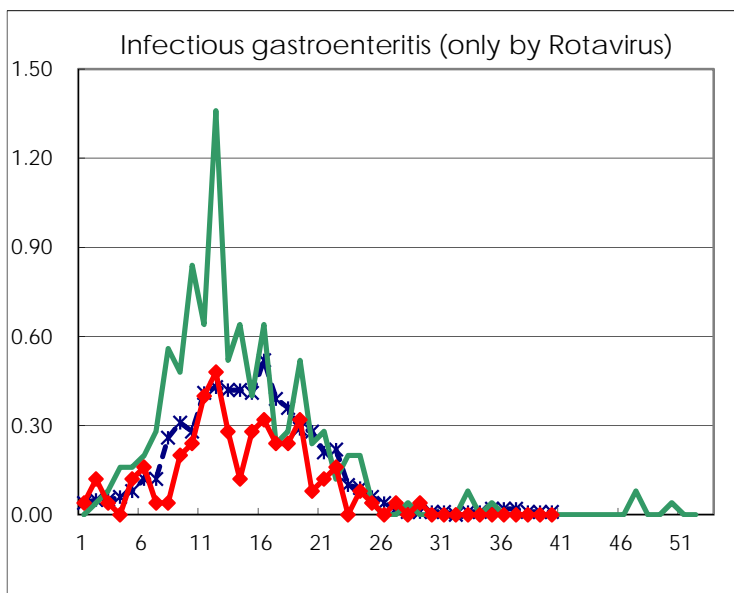
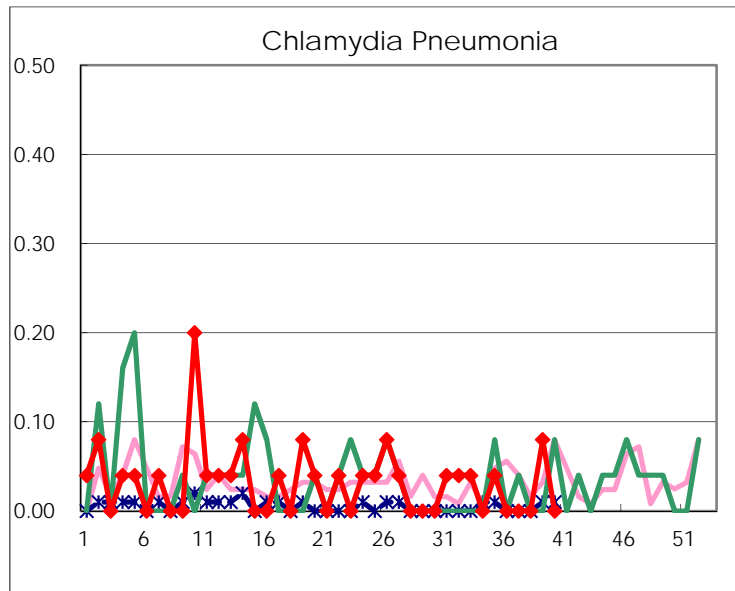
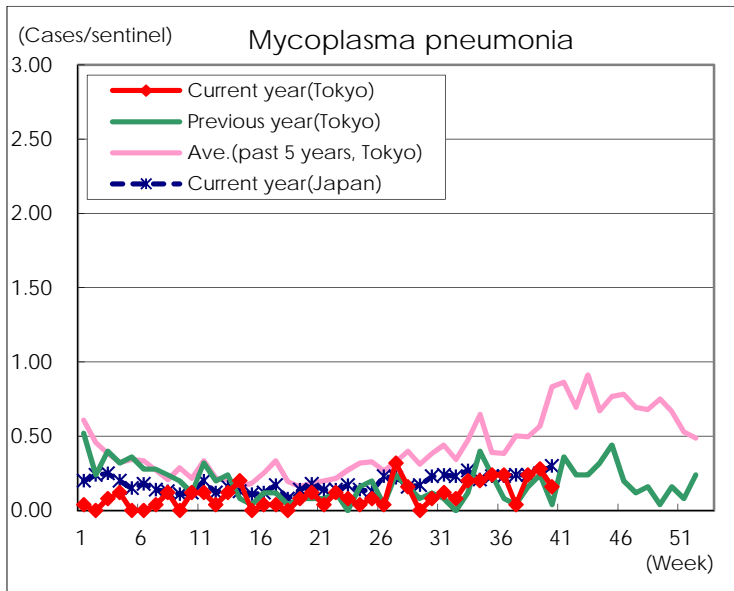
( Blank means 0. )

# Disease Trend Graph (weekly reported cases per sentinel in comparison)









Number of sentinel facilities for weekly reporting		
Types of sentinels	Number of sentinels	Sentinels having reported
Pediatric	264	258
Influenza	419	410
Ophthalmic	39	38
Specially-designated	25	25