

18 October 2018 / Number 41

Surveillance System in Tokyo, Japan

The infectious diseases which all physicians must report

All physicians must report to health centers the incidence of the diseases which are shown at page one. Health centers electronically report the individual cases to Tokyo Metropolitan Infectious Disease Surveillance Center.

The infectious diseases required to be reported by the sentinels

The numbers of patients who visit the sentinel clinics or hospitals during a week are reported to health centers in Tokyo. And they electronically report the numbers to Tokyo Metropolitan Infectious Disease Surveillance Center. We have about 500 sentinel clinics and hospitals in Tokyo.

Tokyo Metropolitan Institute of Public Health

TEL:81-3-3363-3213 FAX:81-3-5332-7365

e-mail:www@tokyo-eiken.go.jp

URL:idsc.tokyo-eiken.go.jp/

Number of patients with the diseases which all physicians must report

Category	Diseases	Tokyo					Japan	
		38th	39th	40th	41st	Cum 2018	41st	Cum 2018
I	Ebola hemorrhagic fever							
	Crimean-Congo hemorrhagic fever							
	Smallpox							
	South American hemorrhagic fever							
	Plague							
	Marburg disease							
	Lassa fever							
II	Acute poliomyelitis							
	Tuberculosis	67	46	45	55	2,580	282	16,955
	Diphtheria							
	Severe Acute Respiratory Syndrome(SARS)							
	Middle East Respiratory Syndrome (MERS)							
	Avian influenza H5N1							
	Avian influenza H7N9							
III	Cholera							3
	Shigellosis	1	1	1	1	34	4	127
	Enterohemorrhagic Escherichia coli infection	12	13	10	3	397	54	3,386
	Typhoid fever	1			2	11	4	29
	Paratyphoid fever					7	1	19
IV	Hepatitis E	2	1	3	5	79	12	357
	West Nile fever							
	Hepatitis A	7	4	9	5	373	10	815
	Echinococcosis						1	10
	Yellow fever							
	Psittacosis				1	2	1	6
	Omsk hemorrhagic fever							
	Relapsing fever							5
	Kyasanur forest disease							
	Q fever					2		3
	Rabies							
	Coccidioidomycosis							2
	Monkeypox							
	Zika virus infection							
	Severe Fever with Thrombocytopenia Syndrome						1	68
	Hemorrhagic fever with renal syndrome							
	Western equine encephalitis							
	Tick-borne encephalitis							1
	Anthrax							
	Chikungunya fever							3
	Scrub typhus(Tsutsugamushi disease)					4		99
	Dengue fever	2	5	1	2	49	3	150
	Eastern equine encephalitis							
	Avian influenza (excluding H5N1 and H7N9)							
	Nipah virus infection							
	Japanese spotted fever						8	237
	Japanese encephalitis							
	Hantavirus pulmonary syndrome							
	Herpes B virus infection							
	Glanders							
	Brucellosis							3
	Venezuelan equine encephalitis							
	Hendra virus infection							
Epidemic typhus								
Botulism					1		2	
Malaria		1				13	1	41
Tularemia								
Lyme disease					1		11	
Lyssavirus infection(excluding rabies)								
Rift valley fever								
Melioidosis					1		2	
Legionellosis	9	10	5	7	133	75	1,713	
Leptospirosis		2			3		24	
Rocky mountain spotted fever								

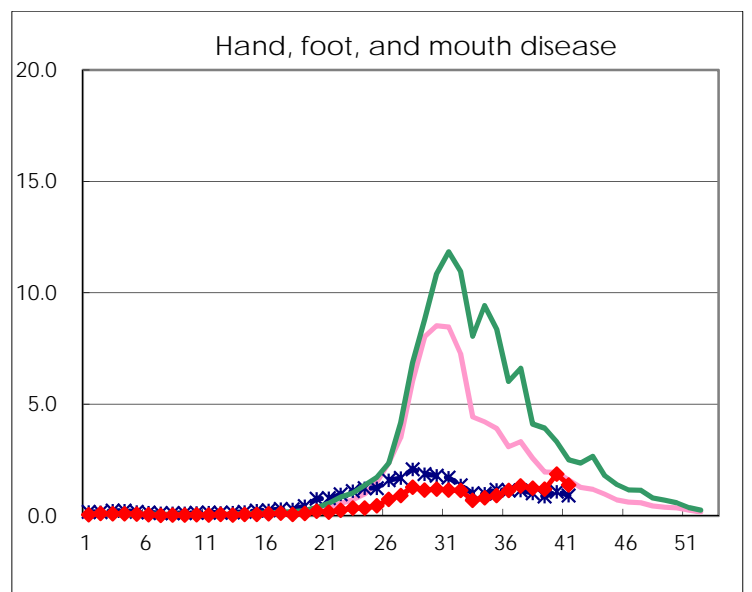
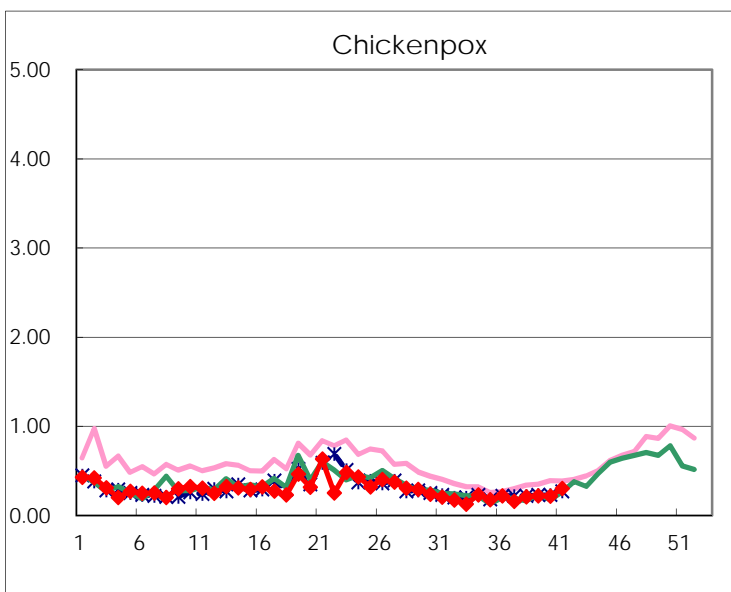
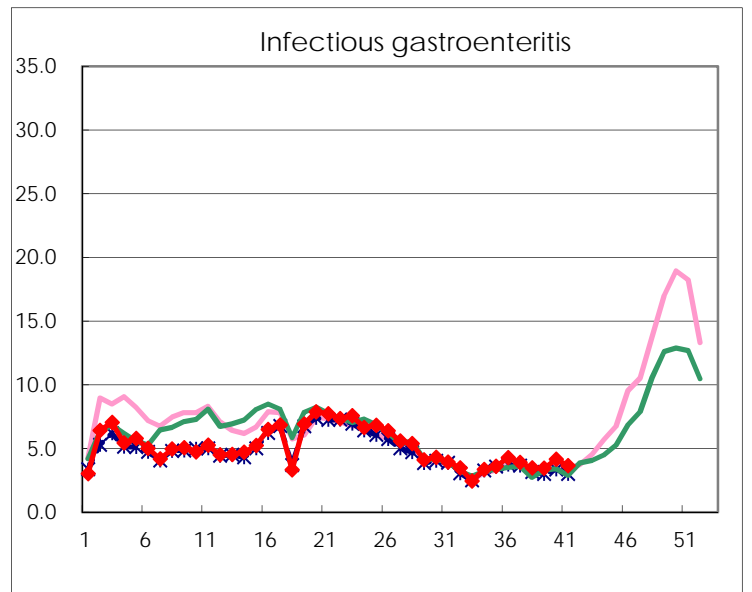
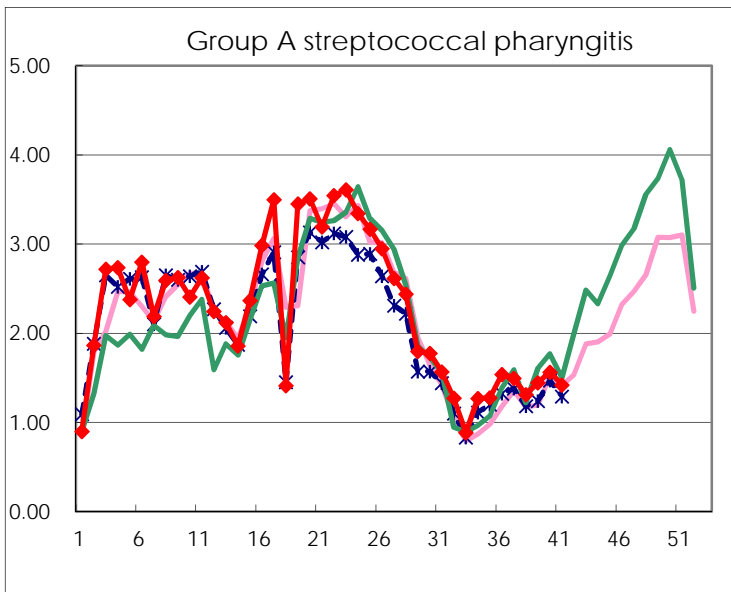
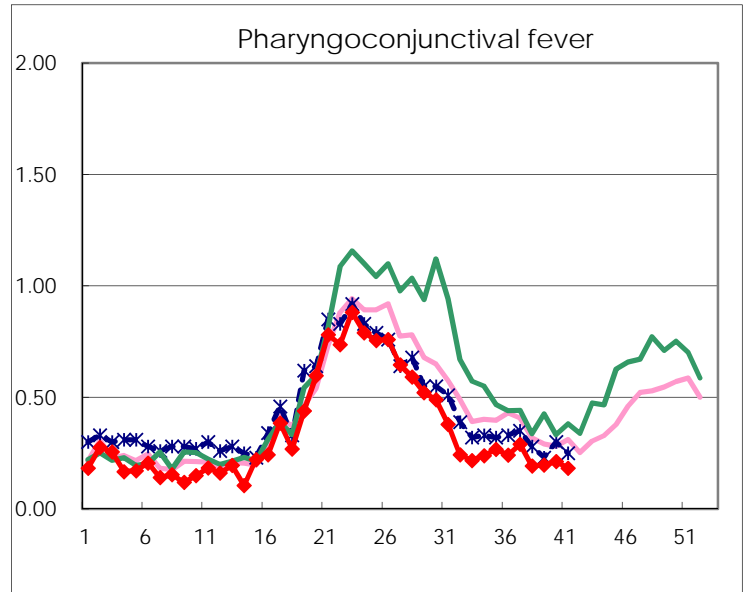
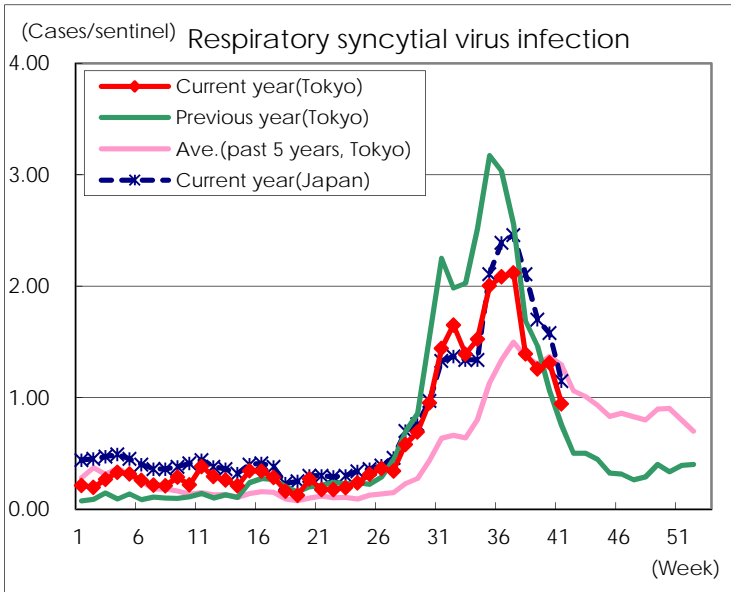
Category	Diseases	Tokyo					Japan	
		38th	39th	40th	41st	Cum 2018	41st	Cum 2018
V	Amebiasis	3	4	3	1	126	7	656
	Viral hepatitis(excluding hepatitis A and E)	1	2	2	2	47	4	187
	CRE infection	5	6	9	8	171	33	1,651
	Acute Flaccid Paralysis (excluding Acute poliomyelitis)					3	5	55
	Acute encephalitis(excluding JE and WNE)		1			49	4	527
	Cryptosporidiosis					3		12
	Creutzfeldt-Jakob disease		1		1	19	3	164
	Severe invasive streptococcal infections(TSLs)		3	1	3	74	11	552
	Acquired immunodeficiency syndrome (AIDS)	10	8	9	2	312	12	1,014
	Giardiasis	1				16		58
	Invasive <i>Haemophilus influenzae</i> disease	1	1	3	1	30	6	377
	Invasive meningococcal disease					6		28
	Invasive pneumococcal disease	2	2	4	4	295	28	2,509
	Varicella (limited to hospitalized case)	1	1	2		47	3	335
	Congenital rubella syndrome							
	Syphilis	22	35	33	35	1,363	75	5,365
	Disseminated cryptococcosis					15		140
	Tetanus		2		2	7	3	101
	Vancomycin-resistant <i>S. aureus</i> infection							
	Vancomycin-resistant <i>Enterococcus</i> infection					5	2	62
	Pertussis	66	64	68	56	1,410	172	7,574
	Rubella	50	51	64	61	434	141	1,289
	Measles					15	9	232
MDRA infection					3		19	

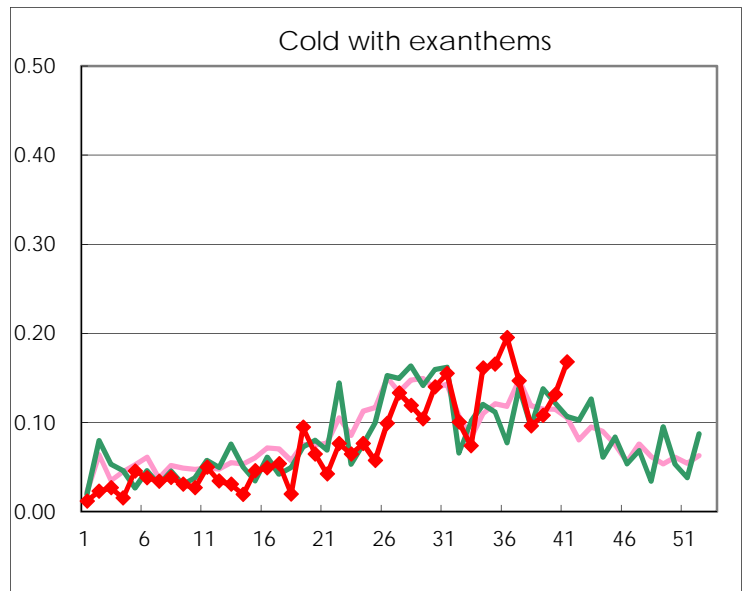
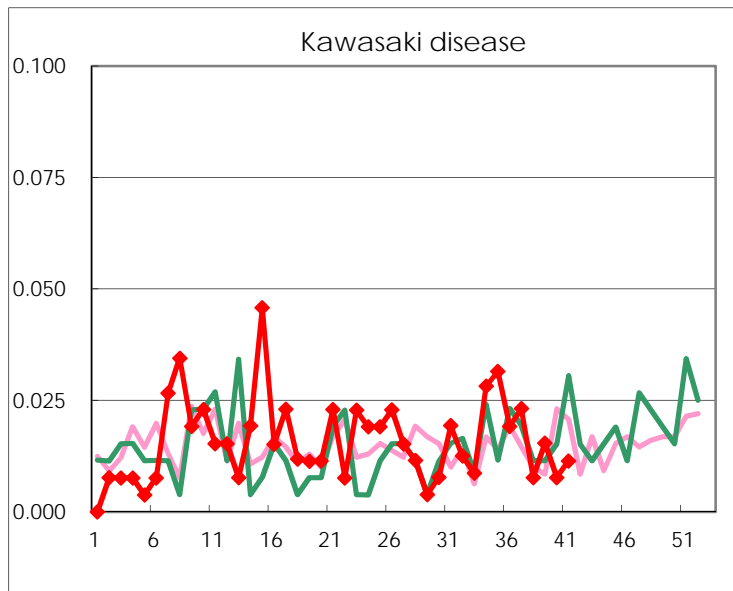
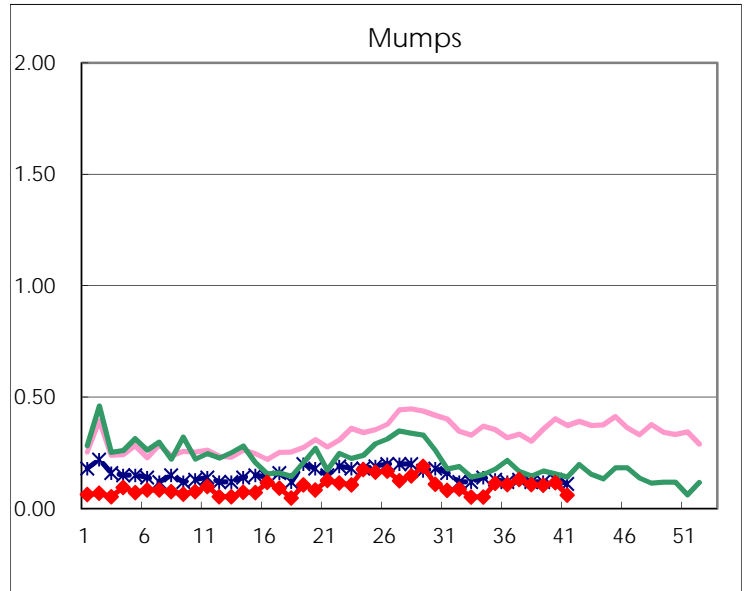
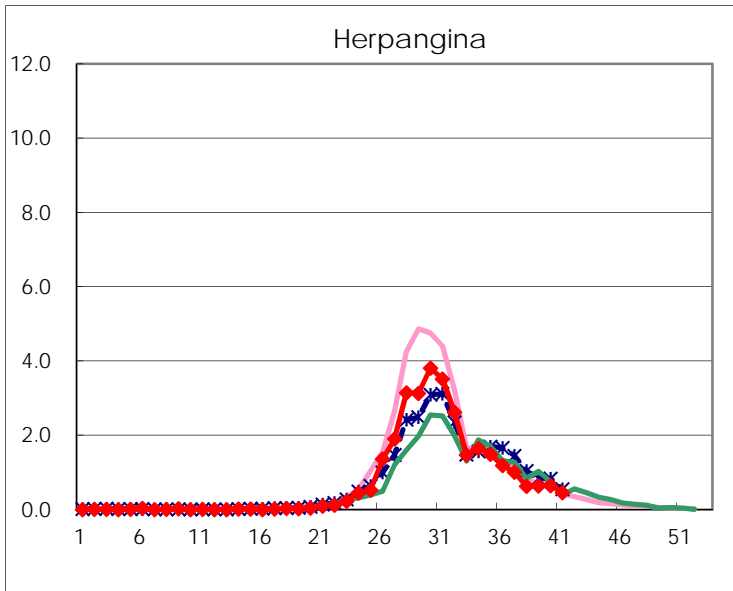
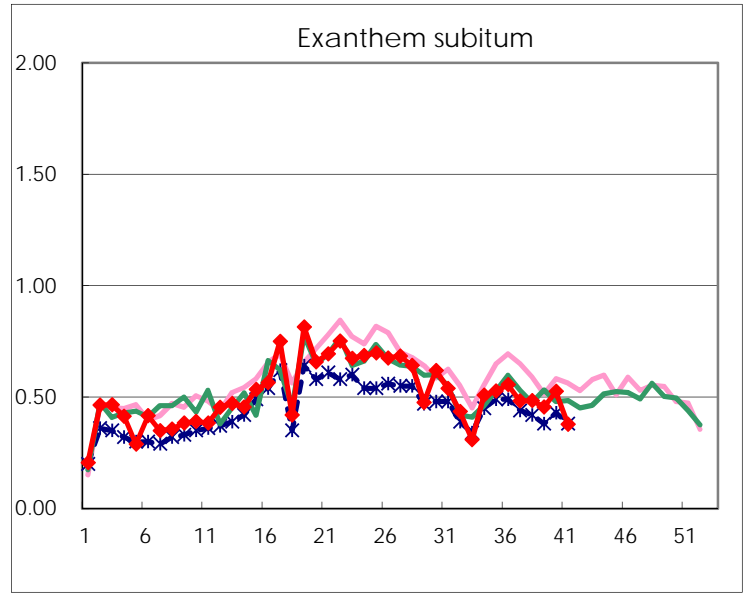
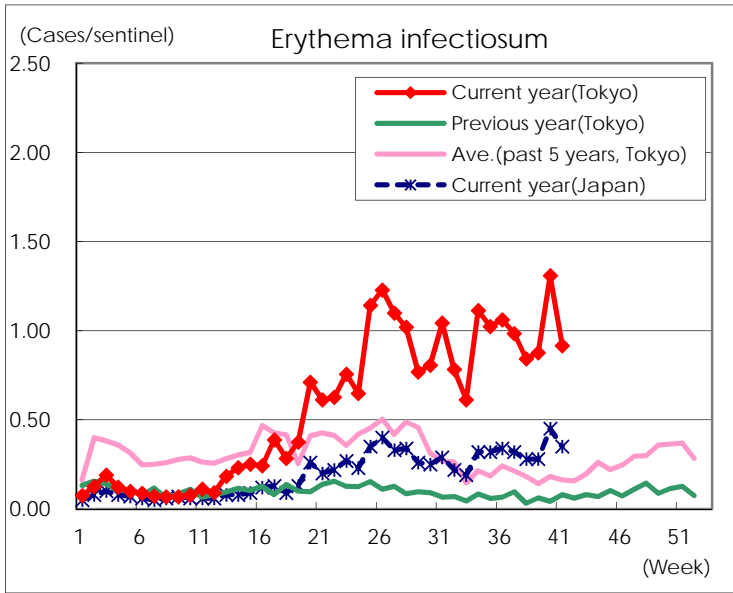
Number of patients with the diseases to be reported
by the designated clinics and hospitals

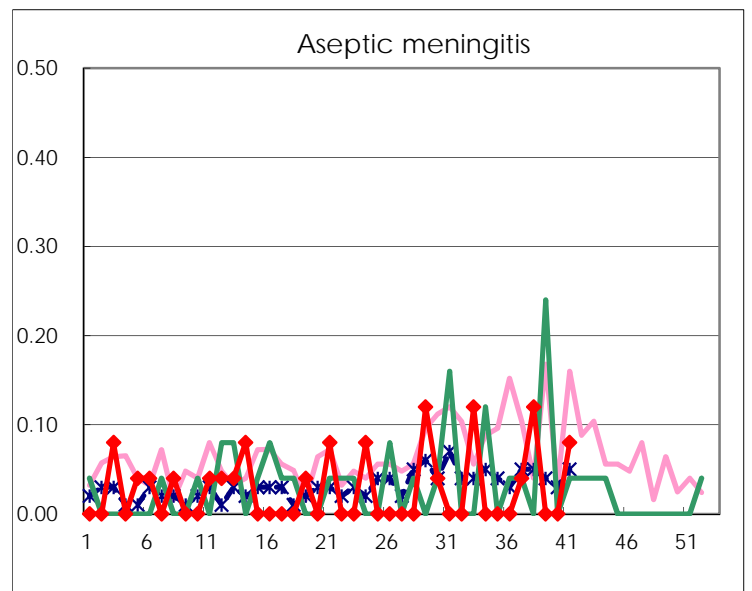
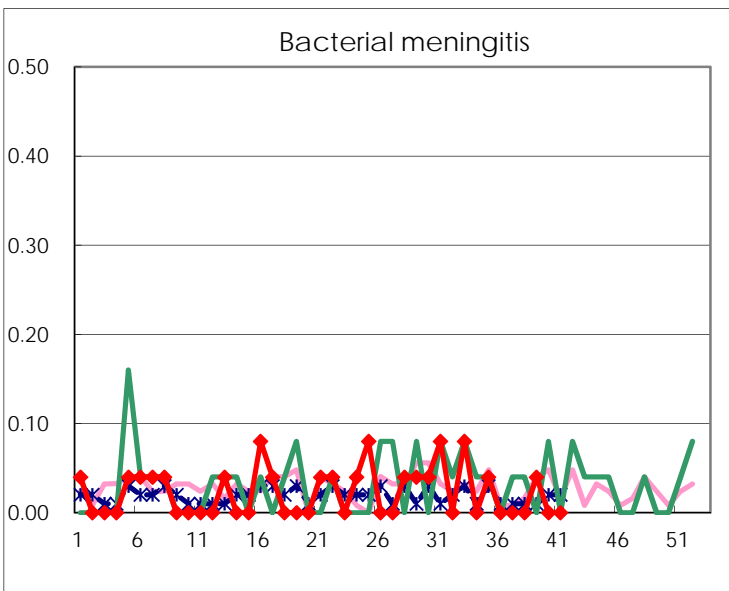
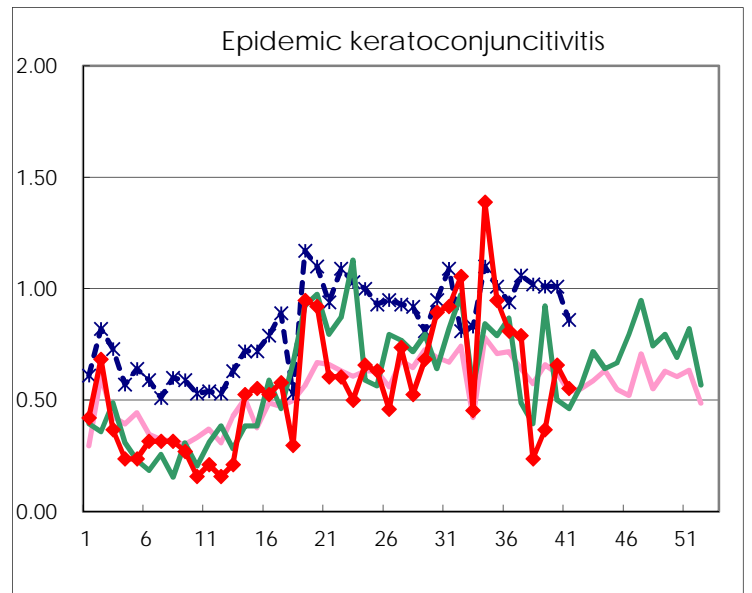
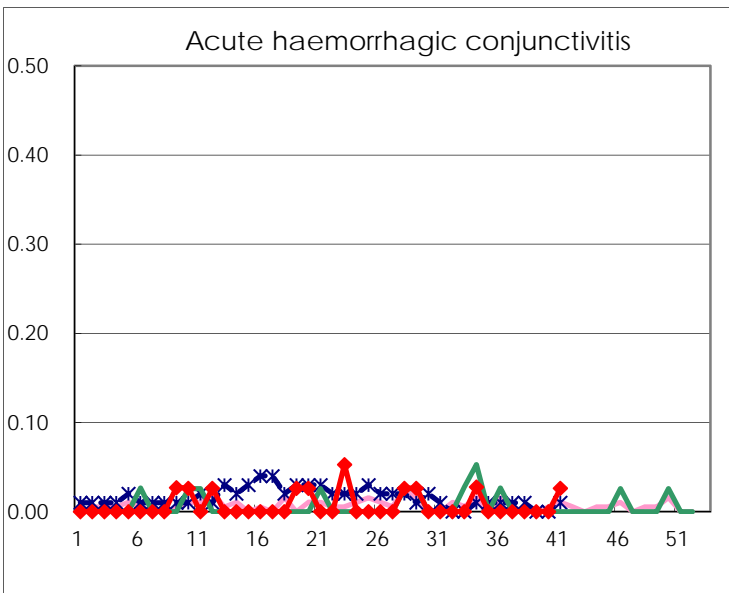
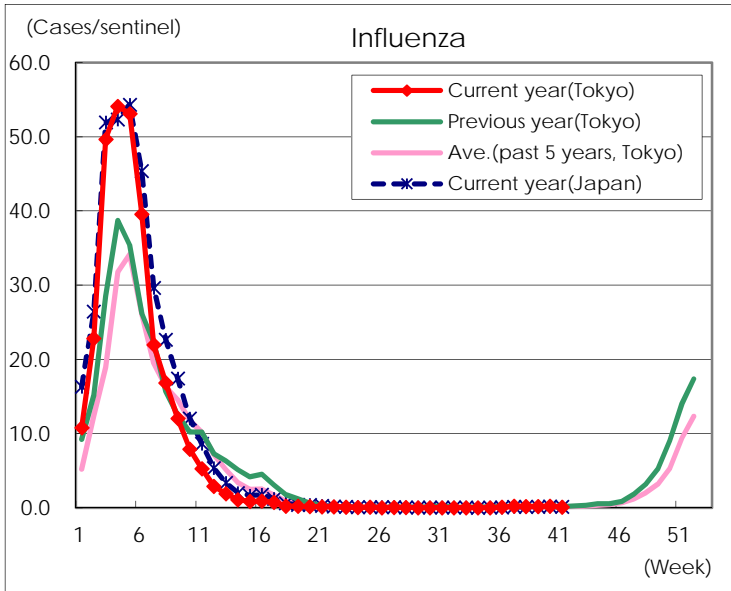
Diseases	Tokyo				
	38th	39th	40th	41st	/sentinel
Respiratory syncytial virus infection	362	326	340	248	0.95
Pharyngoconjunctival fever	50	51	55	48	0.18
Group A streptococcal pharyngitis	341	374	405	372	1.42
Infectious gastroenteritis	902	891	1,073	956	3.65
Chickenpox	54	57	56	79	0.30
Hand, foot, and mouth disease	321	308	483	362	1.38
Erythema infectiosum	219	227	339	240	0.92
Exanthem subitum	126	118	136	99	0.38
Herpangina	163	165	168	119	0.45
Mumps	28	27	30	16	0.06
Kawasaki disease	2	4	2	3	0.01
Cold with exanthems	25	28	34	44	0.17
Influenza	79	71	100	42	0.10
Acute hemorrhagic conjunctivitis				1	0.03
Epidemic keratoconjunctivitis	9	14	25	21	0.55
Bacterial meningitis		1			
Aseptic meningitis	3			2	0.08
<i>Mycoplasma pneumoniae</i>	6	7	4	7	0.28
Chlamydial pneumonia (excluding psittacosis)		2			
Infectious gastroenteritis (only by Rotavirus)					
Influenza-Associated Hospitalizations	1		1		

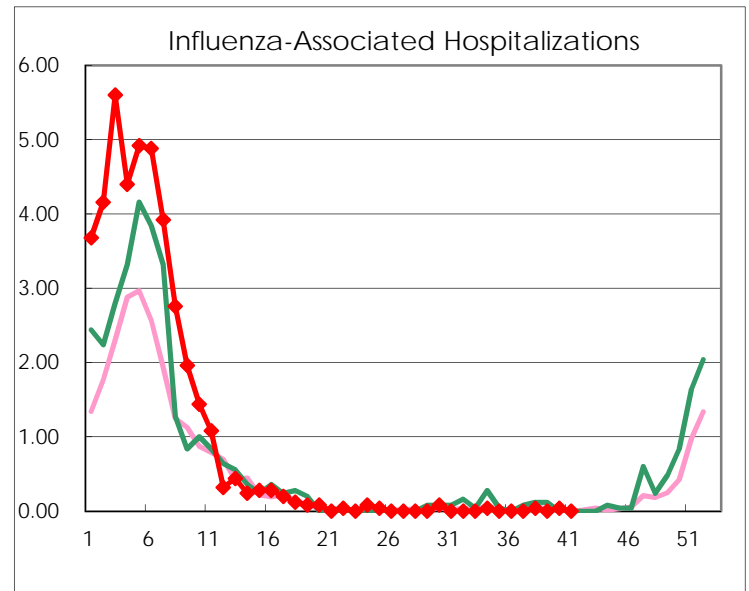
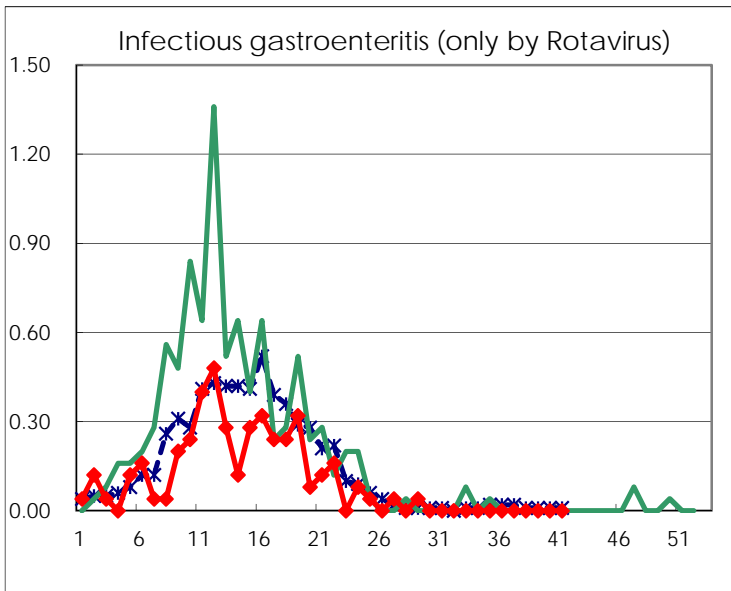
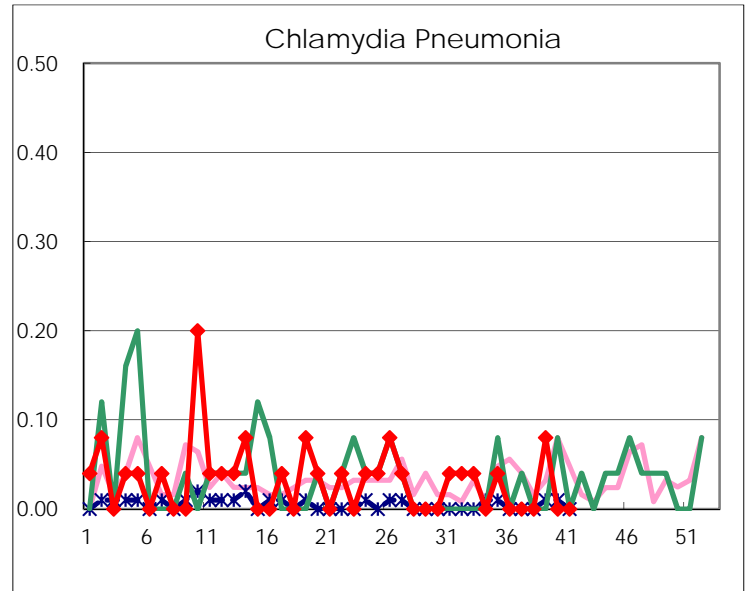
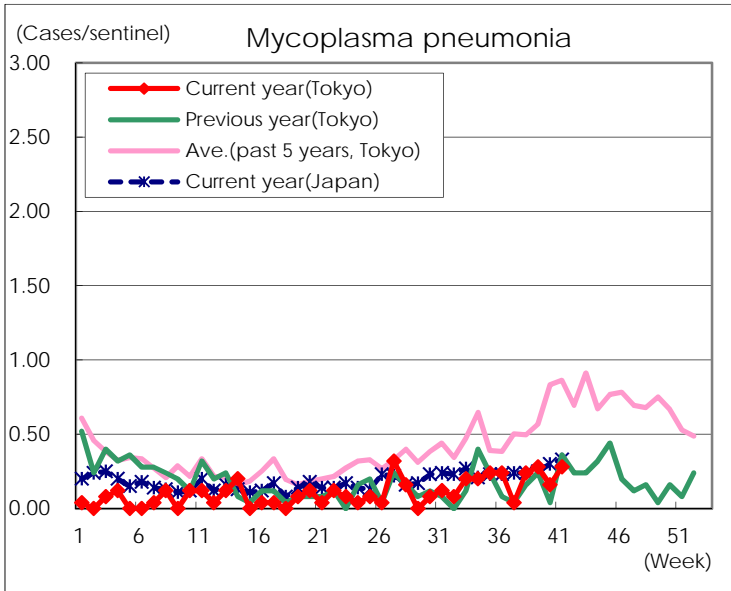
(Blank means 0.)

Disease Trend Graph (weekly reported cases per sentinel in comparison)









Number of sentinel facilities for weekly reporting		
Types of sentinels	Number of sentinels	Sentinels having reported
Pediatric	264	262
Influenza	419	417
Ophthalmic	39	38
Specially-designated	25	25