

25 October 2018 / Number 42

Surveillance System in Tokyo, Japan

The infectious diseases which all physicians must report

All physicians must report to health centers the incidence of the diseases which are shown at page one. Health centers electronically report the individual cases to Tokyo Metropolitan Infectious Disease Surveillance Center.

The infectious diseases required to be reported by the sentinels

The numbers of patients who visit the sentinel clinics or hospitals during a week are reported to health centers in Tokyo. And they electronically report the numbers to Tokyo Metropolitan Infectious Disease Surveillance Center. We have about 500 sentinel clinics and hospitals in Tokyo.

Tokyo Metropolitan Institute of Public Health

TEL:81-3-3363-3213 FAX:81-3-5332-7365

e-mail:www@tokyo-eiken.go.jp

URL:idsc.tokyo-eiken.go.jp/

Number of patients with the diseases which all physicians must report

Category	Diseases	Tokyo					Japan	
		39th	40th	41st	42nd	Cum 2018	42nd	Cum 2018
I	Ebola hemorrhagic fever							
	Crimean-Congo hemorrhagic fever							
	Smallpox							
	South American hemorrhagic fever							
	Plague							
	Marburg disease							
	Lassa fever							
II	Acute poliomyelitis							
	Tuberculosis	46	45	55	53	2,633	367	17,404
	Diphtheria							
	Severe Acute Respiratory Syndrome(SARS)							
	Middle East Respiratory Syndrome (MERS)							
	Avian influenza H5N1							
	Avian influenza H7N9							
III	Cholera							3
	Shigellosis	1	1	1	8	42	20	152
	Enterohemorrhagic Escherichia coli infection	13	10	3	16	413	72	3,472
	Typhoid fever			2		11	3	32
	Paratyphoid fever					7		19
IV	Hepatitis E	1	3	5	1	80	7	364
	West Nile fever							
	Hepatitis A	4	9	5	3	376	8	822
	Echinococcosis							10
	Yellow fever							
	Psittacosis			1		2		6
	Omsk hemorrhagic fever							
	Relapsing fever							5
	Kyasanur forest disease							
	Q fever					2		3
	Rabies							
	Coccidioidomycosis							2
	Monkeypox							
	Zika virus infection							
	Severe Fever with Thrombocytopenia Syndrome						1	69
	Hemorrhagic fever with renal syndrome							
	Western equine encephalitis							
	Tick-borne encephalitis							1
	Anthrax							
	Chikungunya fever							3
	Scrub typhus(Tsutsugamushi disease)					4	1	100
	Dengue fever	5	1	2	2	51	3	153
	Eastern equine encephalitis							
	Avian influenza (excluding H5N1 and H7N9)							
	Nipah virus infection							
	Japanese spotted fever						14	252
	Japanese encephalitis							
	Hantavirus pulmonary syndrome							
	Herpes B virus infection							
	Glanders							
	Brucellosis							3
	Venezuelan equine encephalitis							
	Hendra virus infection							
Epidemic typhus								
Botulism					1		2	
Malaria	1				13	1	42	
Tularemia								
Lyme disease					1	1	12	
Lyssavirus infection(excluding rabies)								
Rift valley fever								
Melioidosis					1		2	
Legionellosis	10	6	7	6	140	46	1,775	
Leptospirosis	2			2	5	1	26	
Rocky mountain spotted fever								

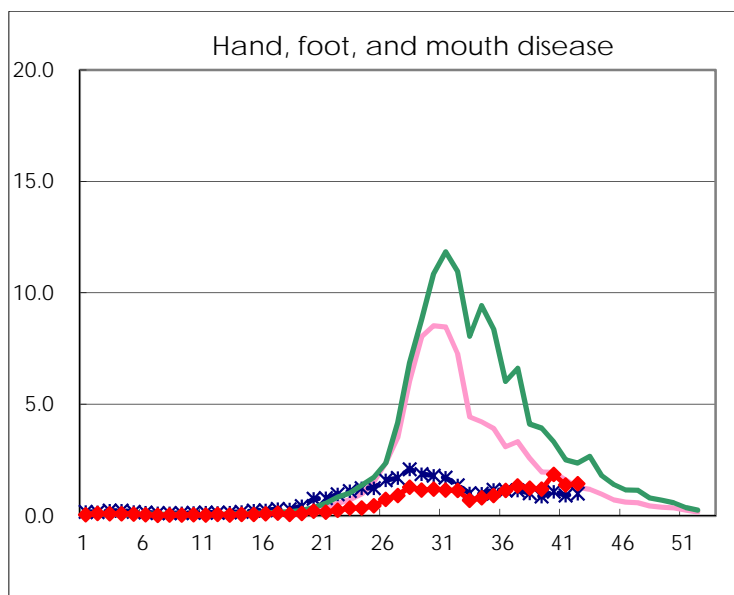
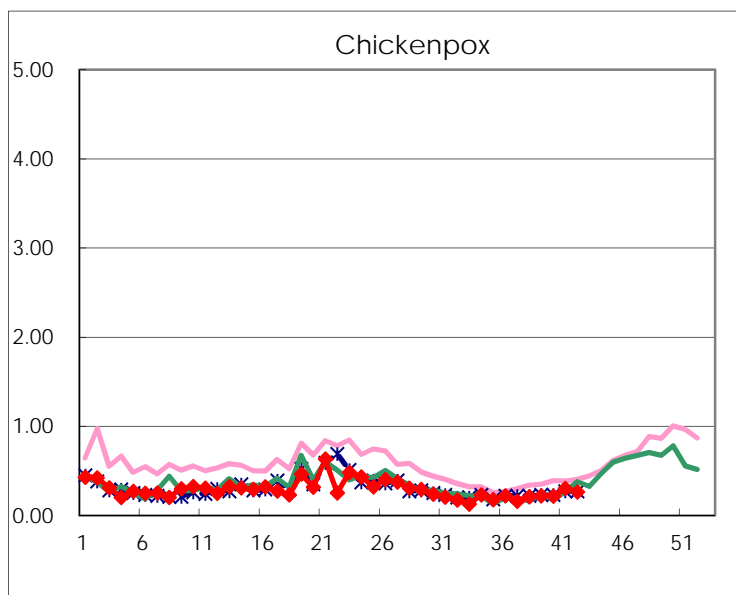
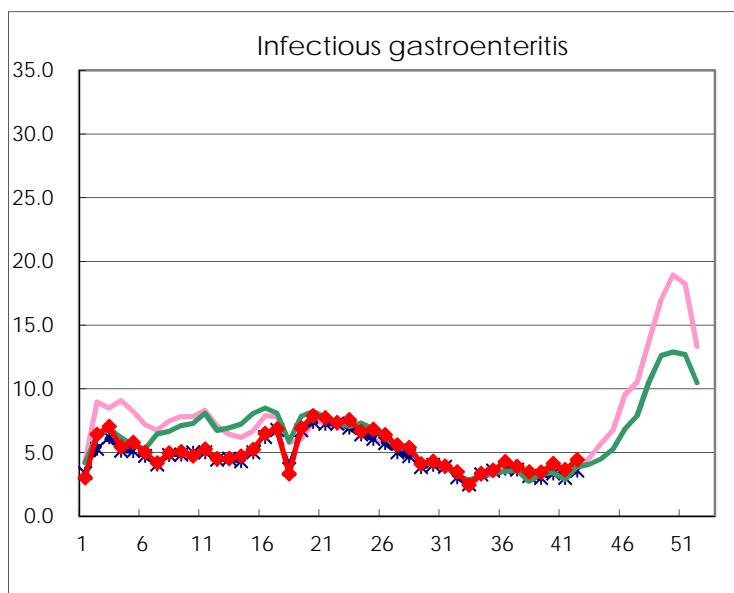
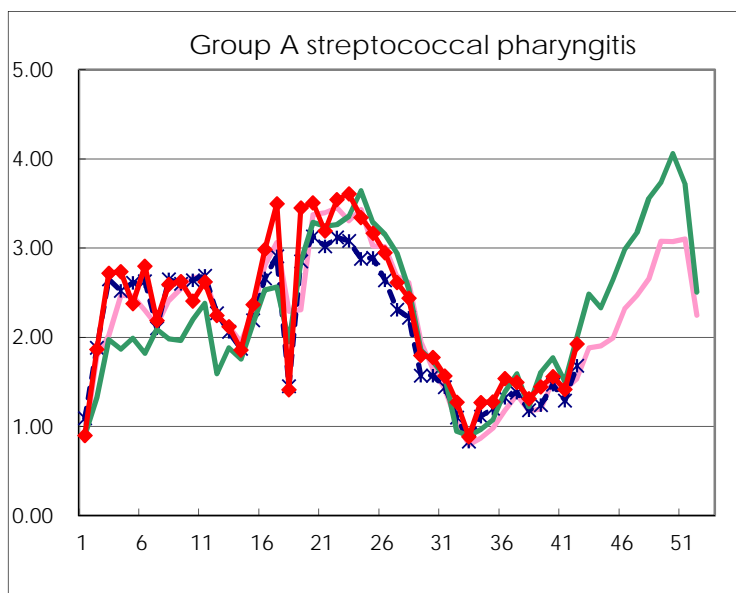
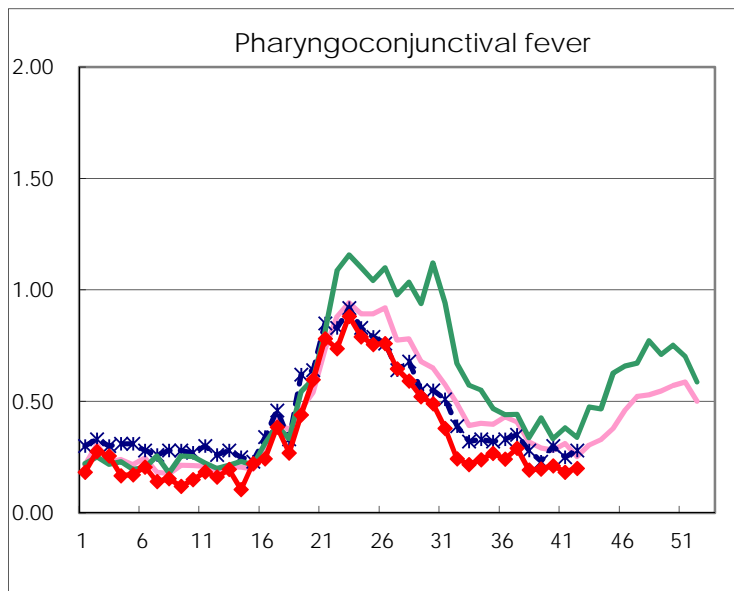
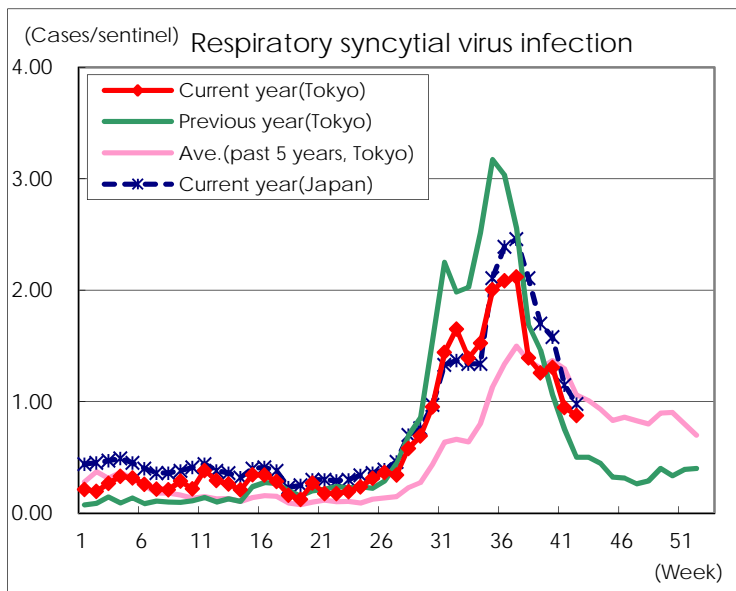
Category	Diseases	Tokyo					Japan	
		39th	40th	41st	42nd	Cum 2018	42nd	Cum 2018
V	Amebiasis	4	3	1	7	133	13	679
	Viral hepatitis(excluding hepatitis A and E)	2	3	2	2	50	4	195
	CRE infection	6	9	8	2	173	39	1,705
	Acute Flaccid Paralysis (excluding Acute poliomyelitis)		1			4	10	73
	Acute encephalitis(excluding JE and WNE)	1				49	5	533
	Cryptosporidiosis					3		12
	Creutzfeldt-Jakob disease	1		1	2	21	2	171
	Severe invasive streptococcal infections(TSLs)	3	1	3	1	75	4	562
	Acquired immunodeficiency syndrome (AIDS)	8	9	2	9	321	13	1,038
	Giardiasis					16		58
	Invasive <i>Haemophilus influenzae</i> disease	1	3	1	2	32	4	383
	Invasive meningococcal disease					6	1	29
	Invasive pneumococcal disease	2	5	4	1	297	30	2,550
	Varicella (limited to hospitalized case)	1	2		1	48	5	345
	Congenital rubella syndrome							
	Syphilis	35	35	35	33	1,400	97	5,532
	Disseminated cryptococcosis				1	16	4	146
	Tetanus	2		2		7	1	102
	Vancomycin-resistant <i>S. aureus</i> infection							
	Vancomycin-resistant <i>Enterococcus</i> infection					5		63
	Pertussis	65	68	62	96	1,513	252	7,945
Rubella	51	64	62	75	510	174	1,486	
Measles					15	8	239	
MDRA infection					3	1	20	

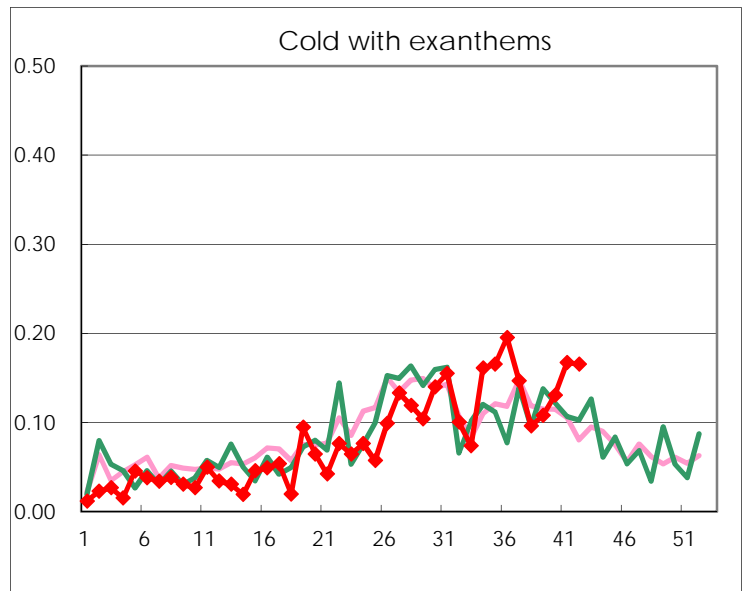
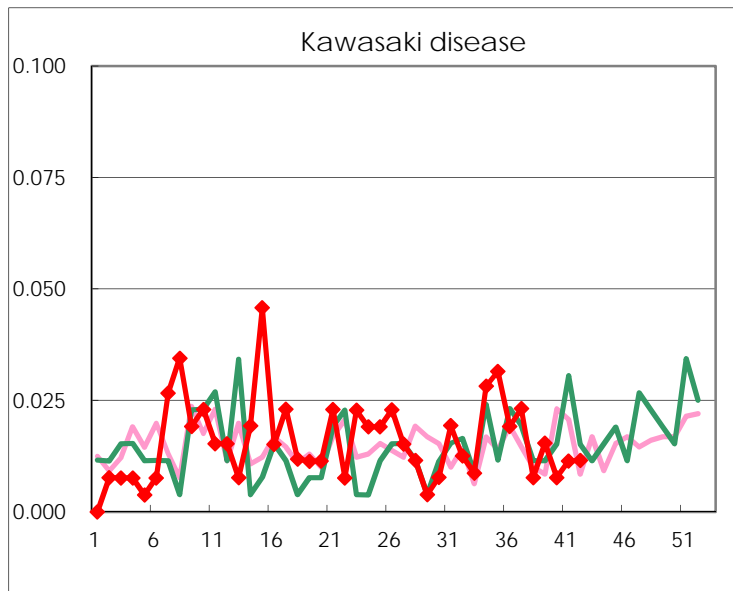
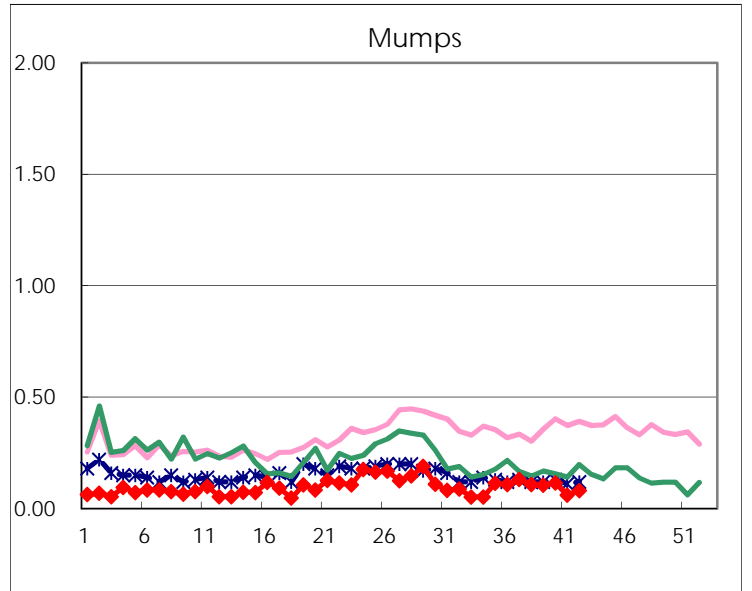
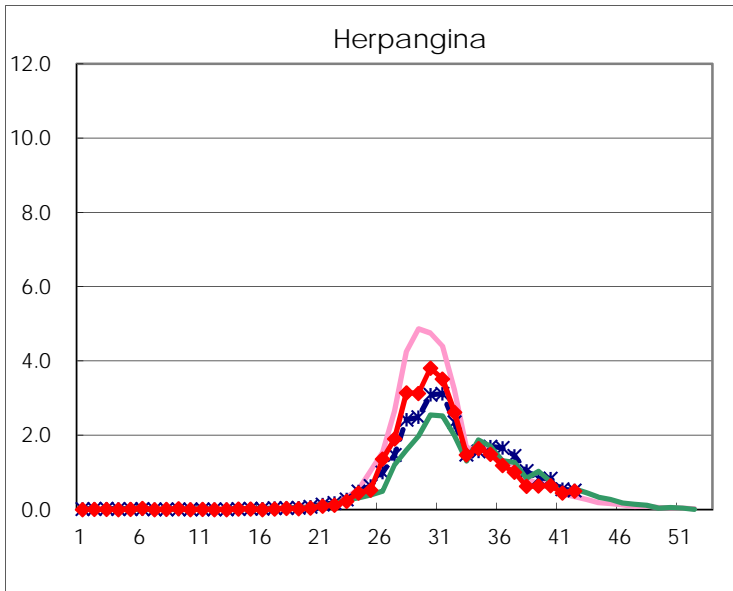
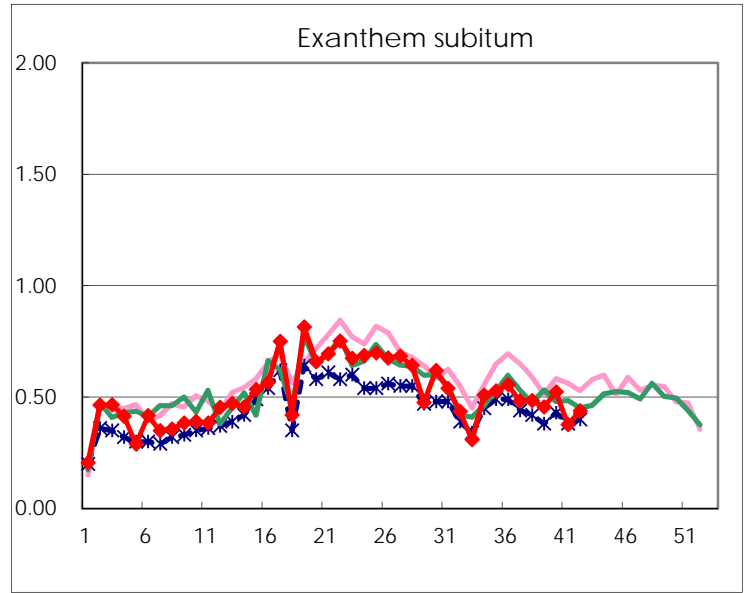
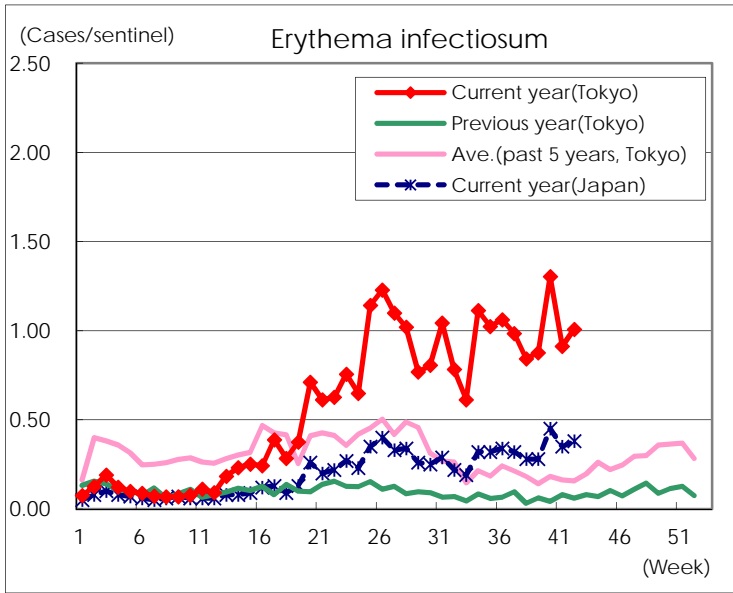
Number of patients with the diseases to be reported
by the designated clinics and hospitals

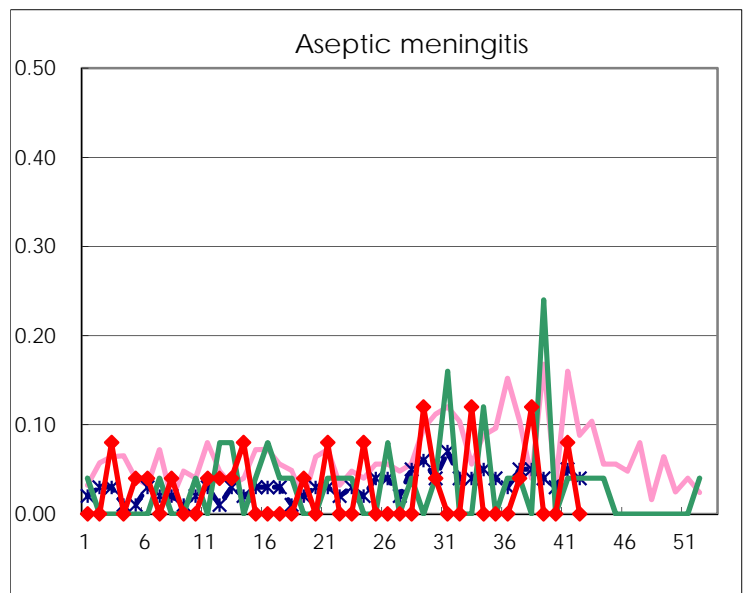
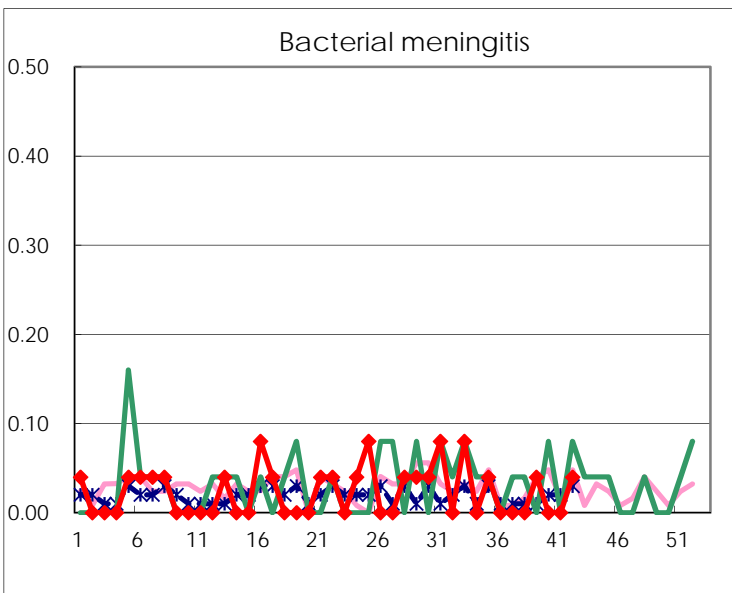
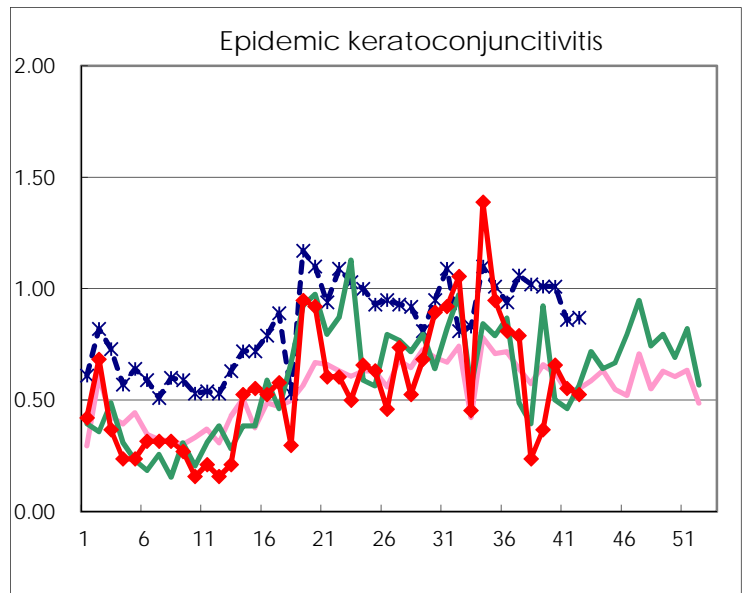
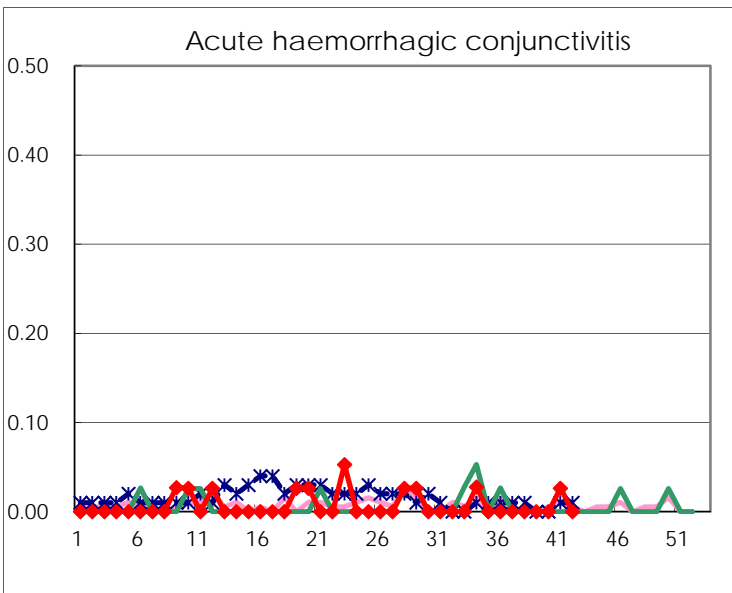
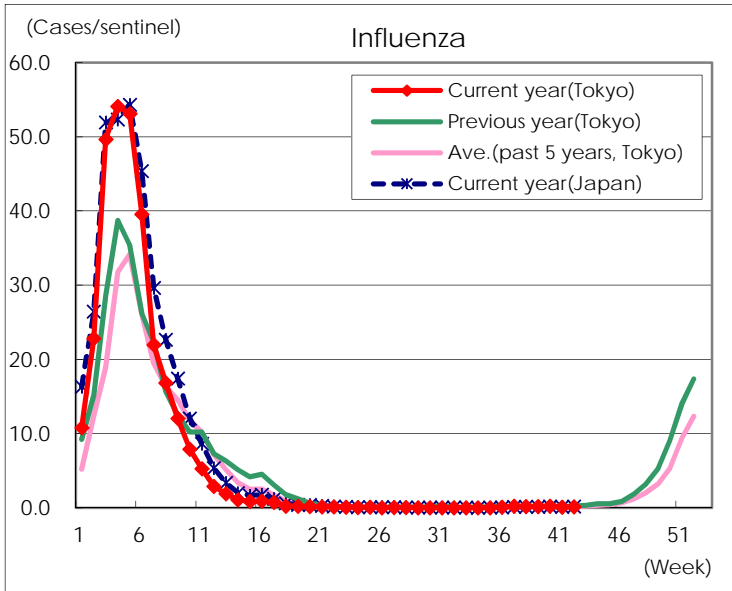
Diseases	Tokyo				
	39th	40th	41st	42nd	/sentinel
Respiratory syncytial virus infection	326	340	249	228	0.88
Pharyngoconjunctival fever	51	55	48	52	0.20
Group A streptococcal pharyngitis	374	405	372	500	1.92
Infectious gastroenteritis	891	1,073	956	1,153	4.43
Chickenpox	57	56	79	68	0.26
Hand, foot, and mouth disease	308	483	362	373	1.43
Erythema infectiosum	227	339	240	262	1.01
Exanthem subitum	118	136	99	114	0.44
Herpangina	165	168	119	129	0.50
Mumps	27	30	16	21	0.08
Kawasaki disease	4	2	3	3	0.01
Cold with exanthems	28	34	44	43	0.17
Influenza	71	100	42	56	0.13
Acute hemorrhagic conjunctivitis			1		
Epidemic keratoconjunctivitis	14	25	21	20	0.53
Bacterial meningitis	1			1	0.04
Aseptic meningitis			2		
<i>Mycoplasma pneumoniae</i>	7	4	7	5	0.20
Chlamydial pneumonia (excluding psittacosis)	2			1	0.04
Infectious gastroenteritis (only by Rotavirus)					
Influenza-Associated Hospitalizations		1			

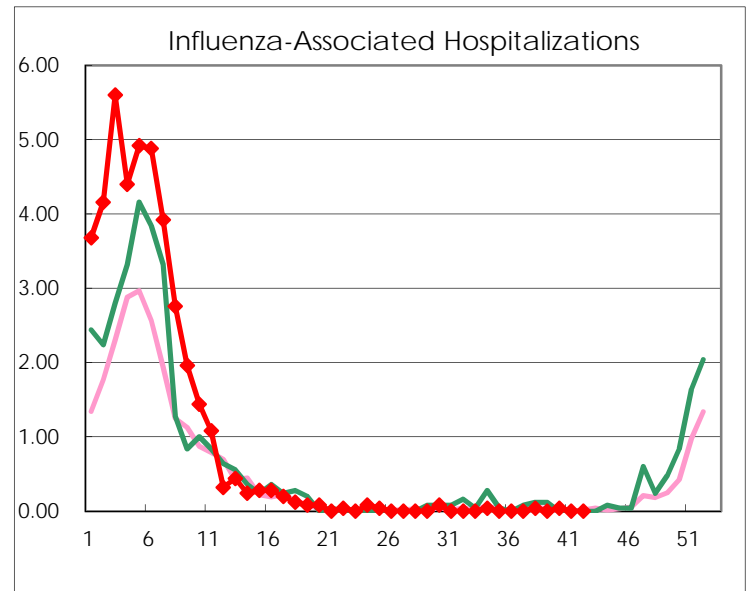
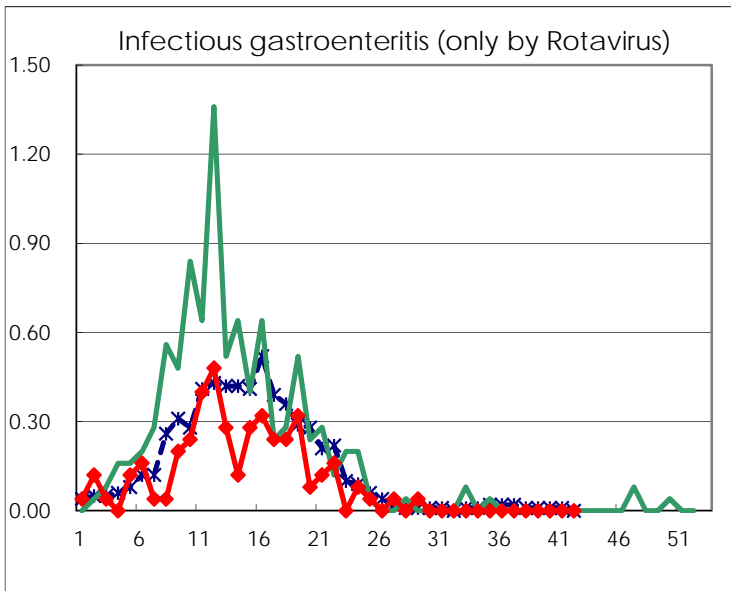
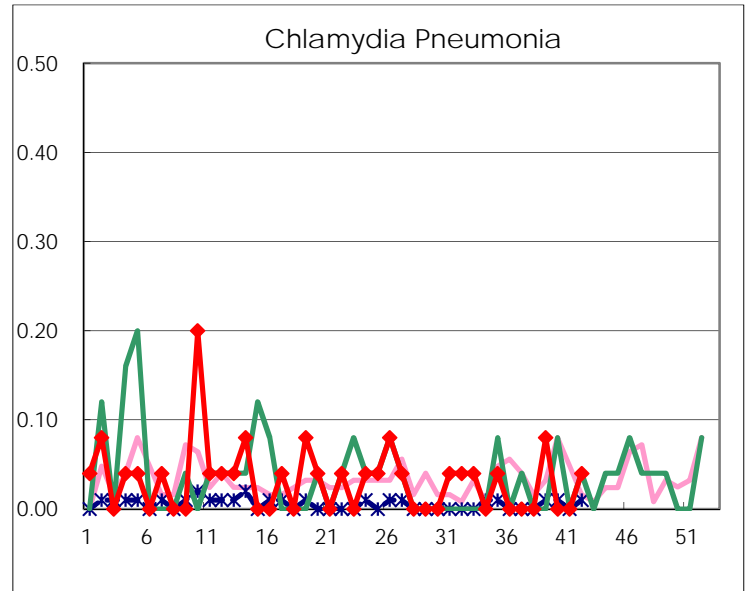
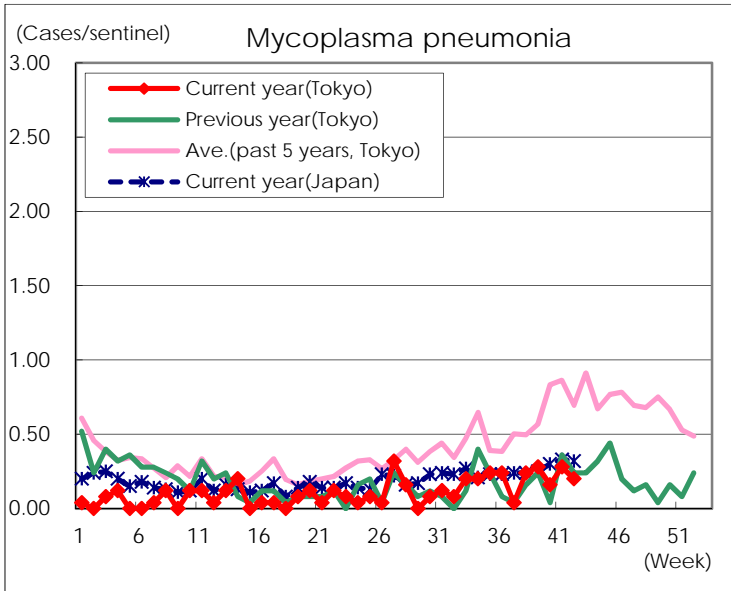
(Blank means 0.)

Disease Trend Graph (weekly reported cases per sentinel in comparison)









Number of sentinel facilities for weekly reporting		
Types of sentinels	Number of sentinels	Sentinels having reported
Pediatric	264	260
Influenza	419	415
Ophthalmic	39	38
Specially-designated	25	25