

1 November 2018 / Number 43

Surveillance System in Tokyo, Japan

The infectious diseases which all physicians must report

All physicians must report to health centers the incidence of the diseases which are shown at page one. Health centers electronically report the individual cases to Tokyo Metropolitan Infectious Disease Surveillance Center.

The infectious diseases required to be reported by the sentinels

The numbers of patients who visit the sentinel clinics or hospitals during a week are reported to health centers in Tokyo. And they electronically report the numbers to Tokyo Metropolitan Infectious Disease Surveillance Center. We have about 500 sentinel clinics and hospitals in Tokyo.

Tokyo Metropolitan Institute of Public Health

TEL:81-3-3363-3213 FAX:81-3-5332-7365

e-mail:www@tokyo-eiken.go.jp

URL:idsc.tokyo-eiken.go.jp/

Number of patients with the diseases which all physicians must report

Category	Diseases	Tokyo					Japan	
		40th	41st	42nd	43rd	Cum 2018	43rd	Cum 2018
I	Ebola hemorrhagic fever							
	Crimean-Congo hemorrhagic fever							
	Smallpox							
	South American hemorrhagic fever							
	Plague							
	Marburg disease							
	Lassa fever							
II	Acute poliomyelitis							
	Tuberculosis	47	63	66	62	2,718	338	17,828
	Diphtheria							
	Severe Acute Respiratory Syndrome(SARS)							
	Middle East Respiratory Syndrome (MERS)							
	Avian influenza H5N1							
	Avian influenza H7N9							
III	Cholera							3
	Shigellosis	1	1	8	25	67	47	199
	Enterohemorrhagic Escherichia coli infection	10	4	16	7	421	56	3,538
	Typhoid fever		2			11		32
	Paratyphoid fever					7		19
IV	Hepatitis E	3	5	1		80	7	365
	West Nile fever							
	Hepatitis A	9	5	3	6	382	6	824
	Echinococcosis							10
	Yellow fever							
	Psittacosis		1			2		6
	Omsk hemorrhagic fever							
	Relapsing fever							5
	Kyasanur forest disease							
	Q fever					2		3
	Rabies							
	Coccidioidomycosis							2
	Monkeypox							
	Zika virus infection							
	Severe Fever with Thrombocytopenia Syndrome						3	72
	Hemorrhagic fever with renal syndrome							
	Western equine encephalitis							
	Tick-borne encephalitis							1
	Anthrax							
	Chikungunya fever							3
	Scrub typhus(Tsutsugamushi disease)					4	11	113
	Dengue fever	1	2	2	1	53	3	157
	Eastern equine encephalitis							
	Avian influenza (excluding H5N1 and H7N9)							
	Nipah virus infection							
	Japanese spotted fever						14	273
	Japanese encephalitis							
	Hantavirus pulmonary syndrome							
	Herpes B virus infection							
	Glanders							
	Brucellosis							3
	Venezuelan equine encephalitis							
	Hendra virus infection							
	Epidemic typhus							
Botulism					1		2	
Malaria					13	3	45	
Tularemia								
Lyme disease					1		13	
Lyssavirus infection(excluding rabies)								
Rift valley fever								
Melioidosis					1		2	
Legionellosis	6	8	6	3	144	43	1,823	
Leptospirosis			2		5		28	
Rocky mountain spotted fever								

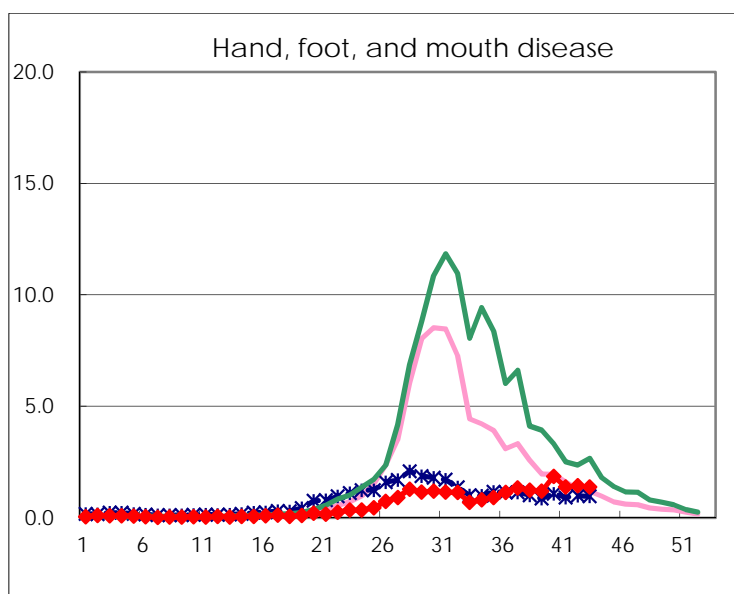
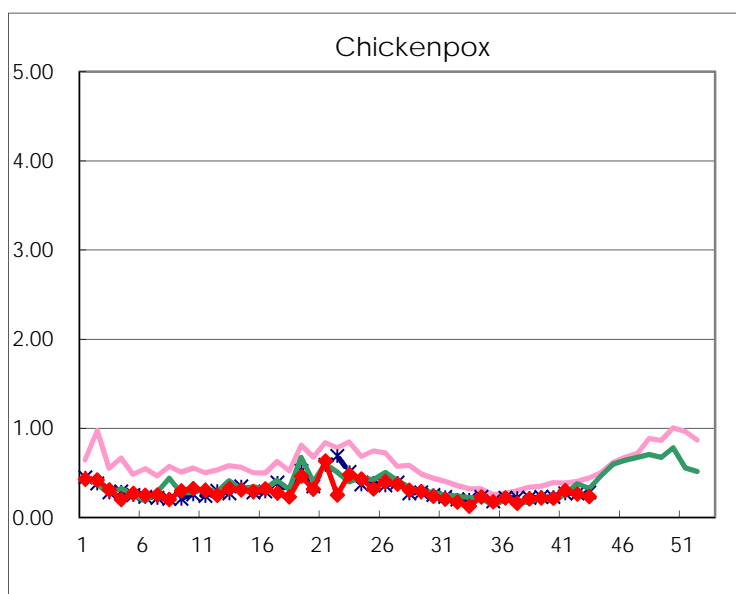
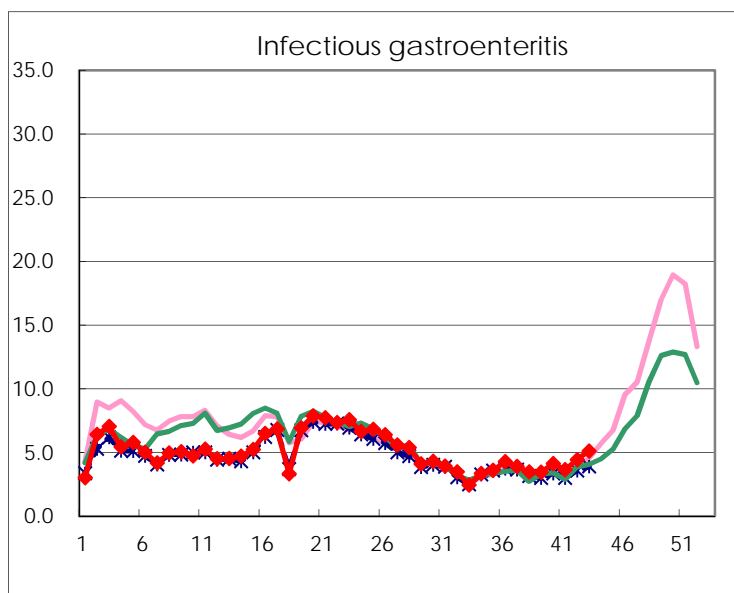
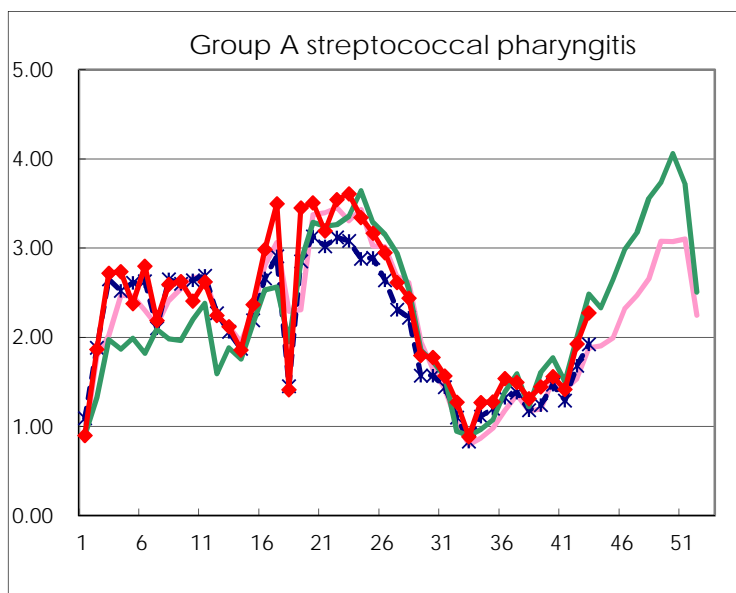
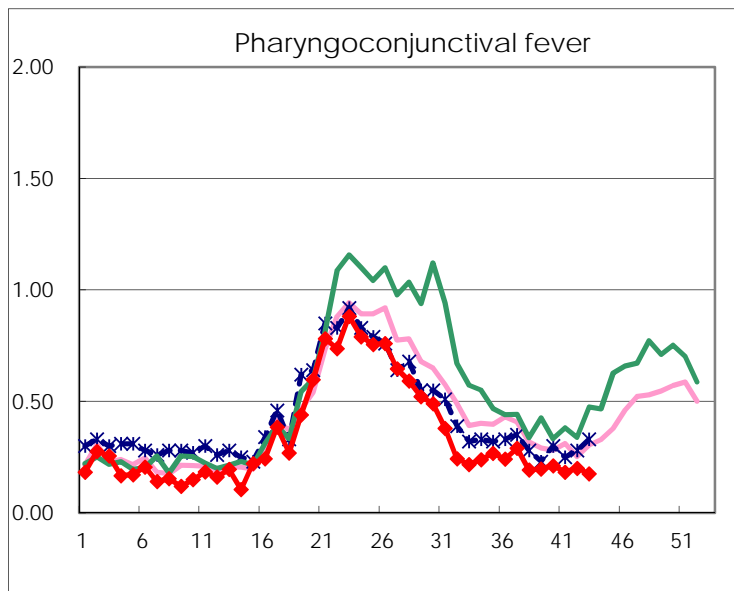
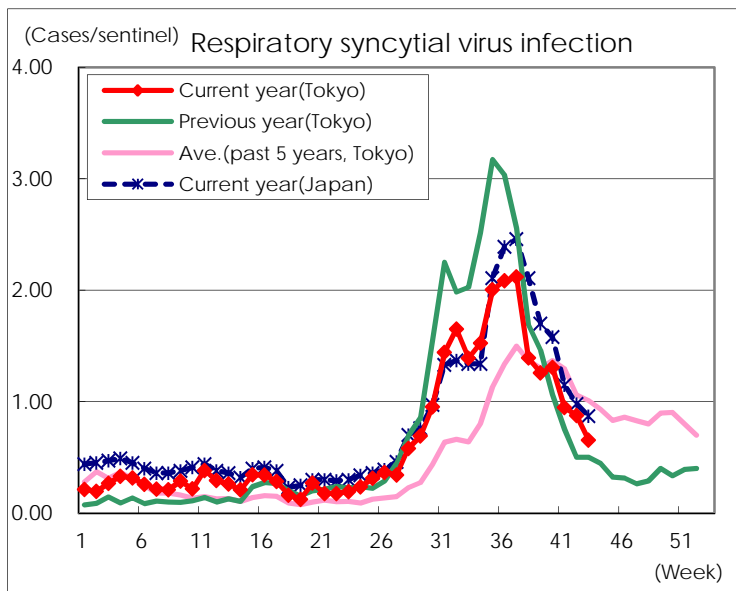
Category	Diseases	Tokyo					Japan	
		40th	41st	42nd	43rd	Cum 2018	43rd	Cum 2018
V	Amebiasis	3	1	7	2	135	15	699
	Viral hepatitis(excluding hepatitis A and E)	3	2	4	1	53	4	205
	CRE infection	9	11	2	7	185	46	1,782
	Acute Flaccid Paralysis (excluding Acute poliomyelitis)	1		1	1	6	9	86
	Acute encephalitis(excluding JE and WNE)				3	52	3	537
	Cryptosporidiosis					3	10	22
	Creutzfeldt-Jakob disease		1	2	1	22	3	175
	Severe invasive streptococcal infections(TSLs)	1	3	1	1	76	5	571
	Acquired immunodeficiency syndrome (AIDS)	9	3	9	6	328	7	1,056
	Giardiasis				1	17	3	62
	Invasive <i>Haemophilus influenzae</i> disease	3	1	2	2	34	7	395
	Invasive meningococcal disease					6		29
	Invasive pneumococcal disease	5	7	1	10	310	45	2,613
	Varicella (limited to hospitalized case)	2		1	1	49	9	356
	Congenital rubella syndrome							
	Syphilis	35	39	33	40	1,445	84	5,674
	Disseminated cryptococcosis			1		16	2	149
	Tetanus		2			7	2	108
	Vancomycin-resistant <i>S. aureus</i> infection							
	Vancomycin-resistant <i>Enterococcus</i> infection					5	3	66
	Pertussis	68	67	106	89	1,617	262	8,346
Rubella	64	62	91	78	604	170	1,692	
Measles				2	17	5	244	
MDRA infection			1		4		21	

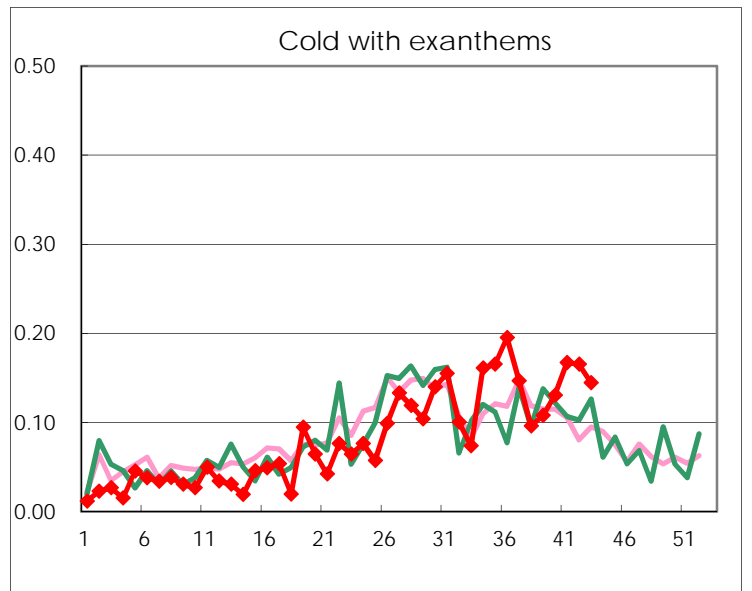
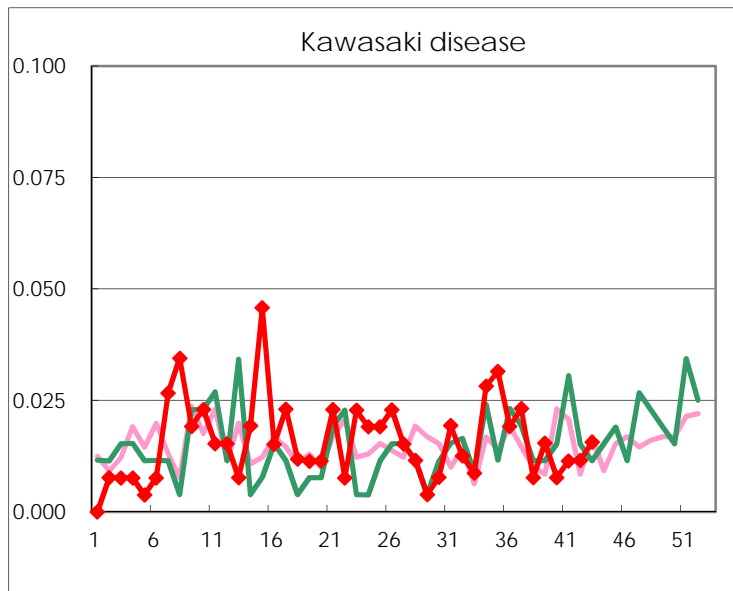
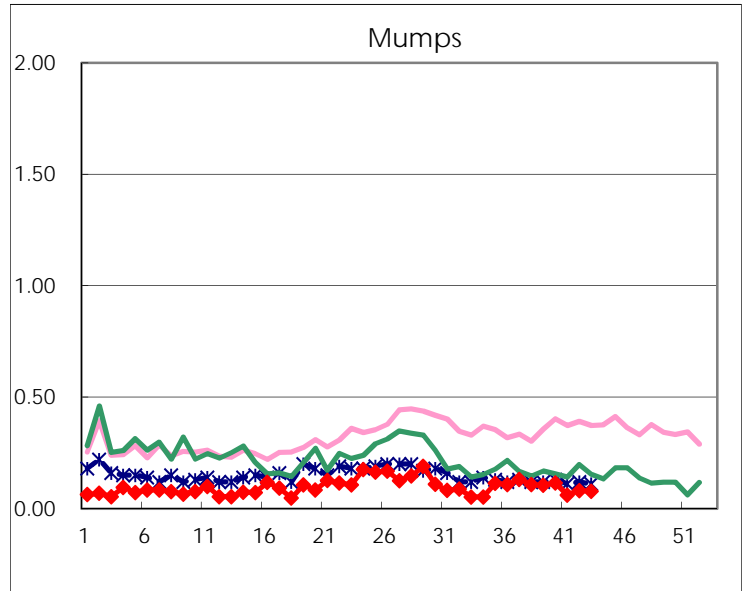
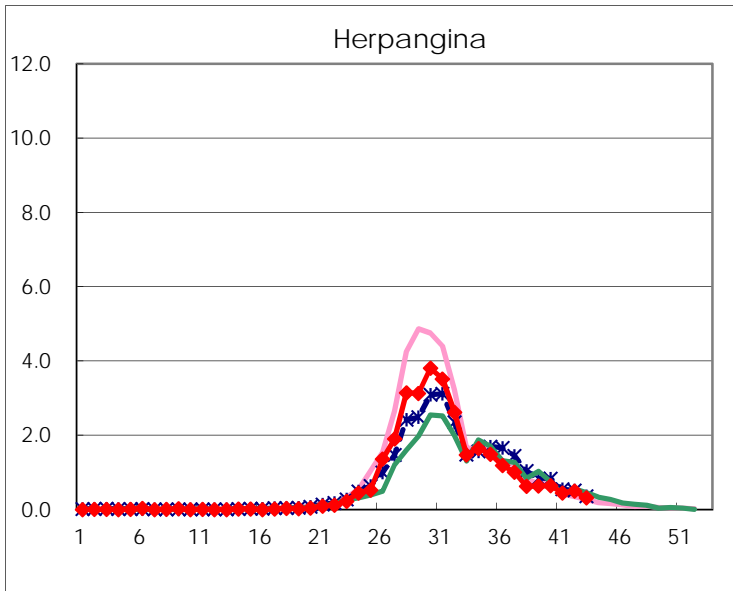
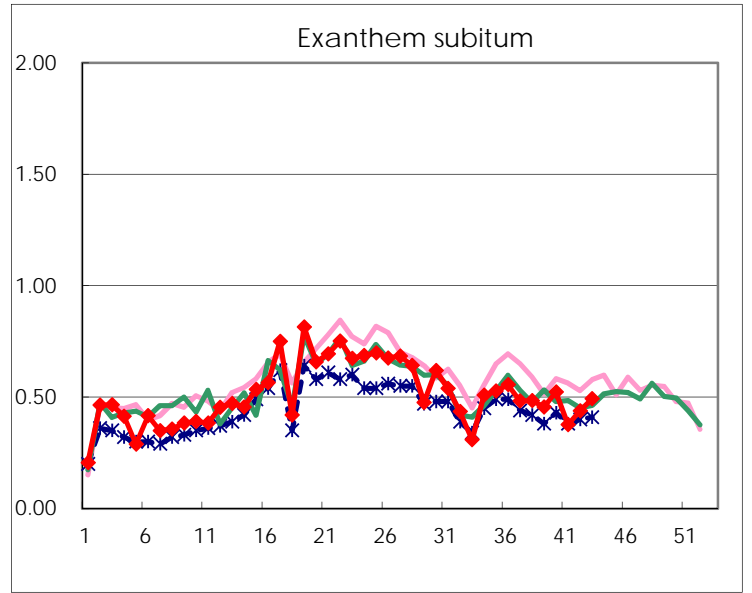
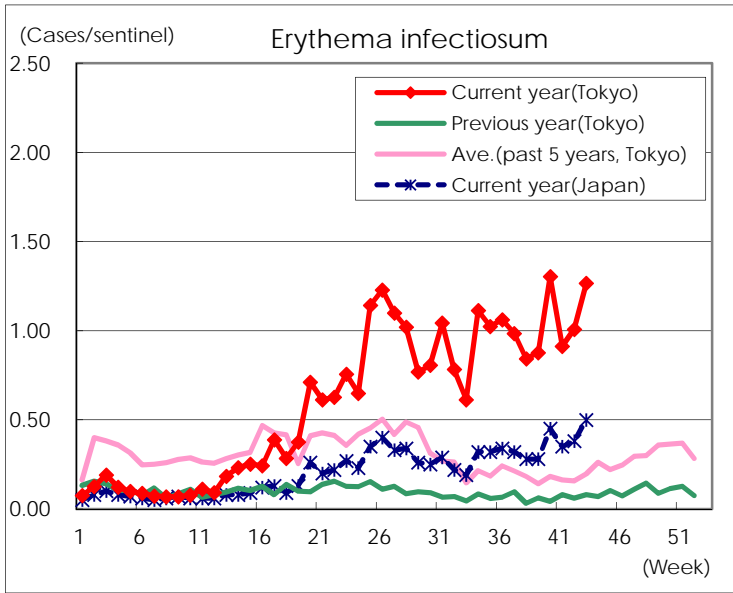
Number of patients with the diseases to be reported
by the designated clinics and hospitals

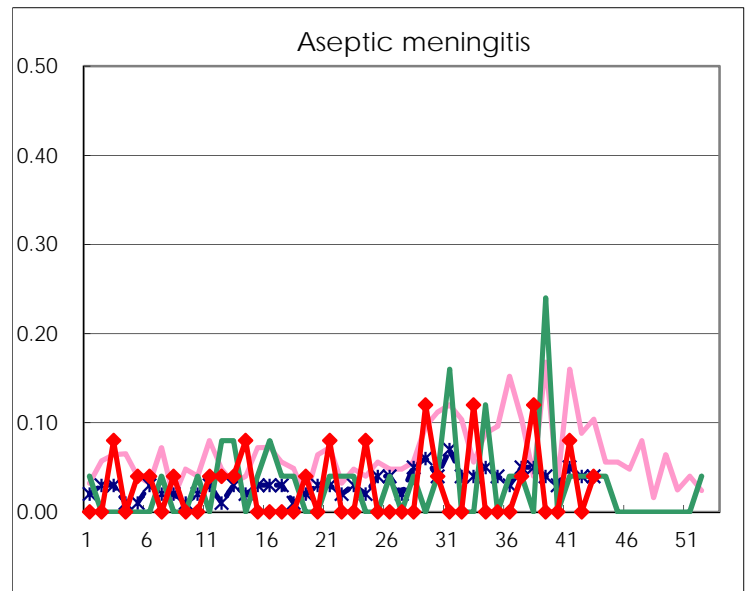
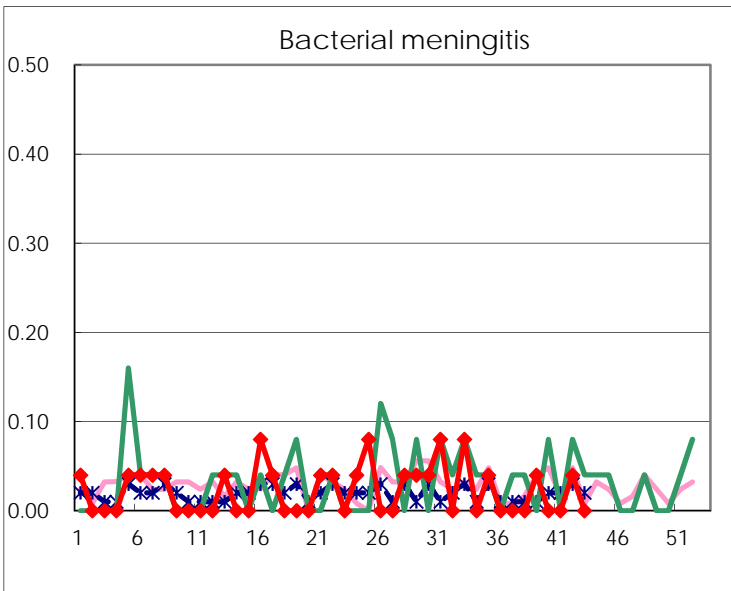
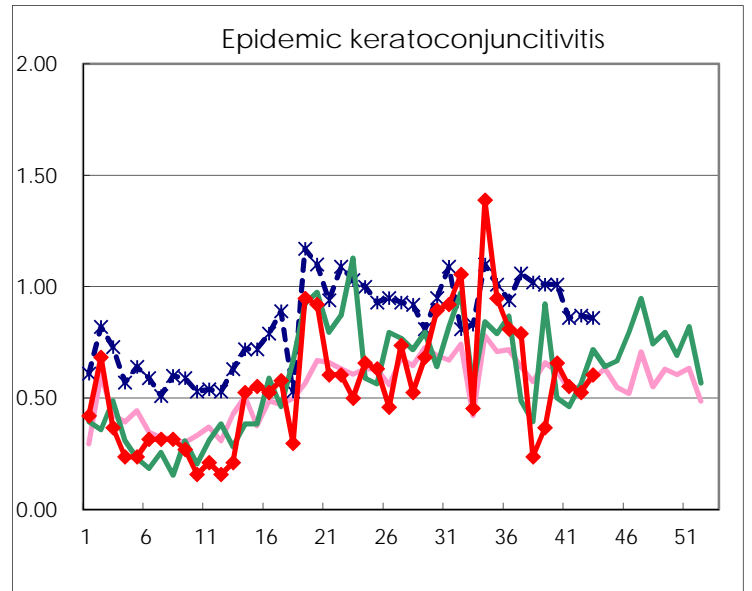
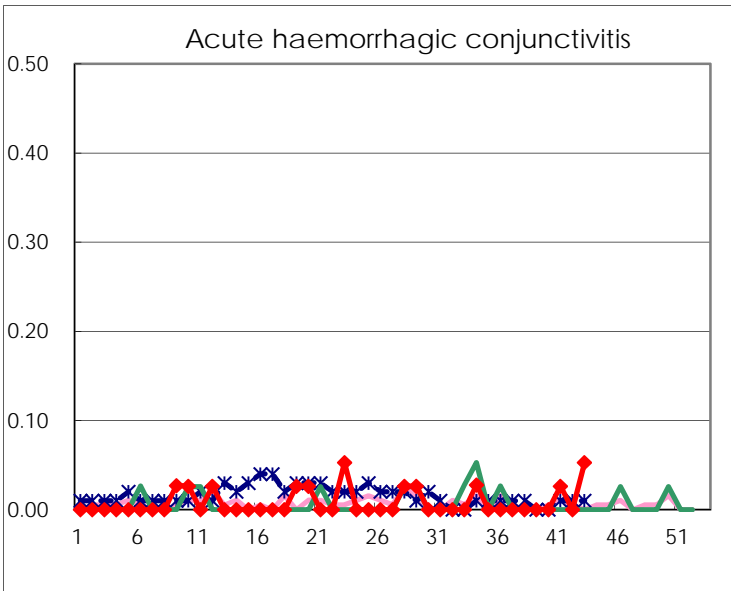
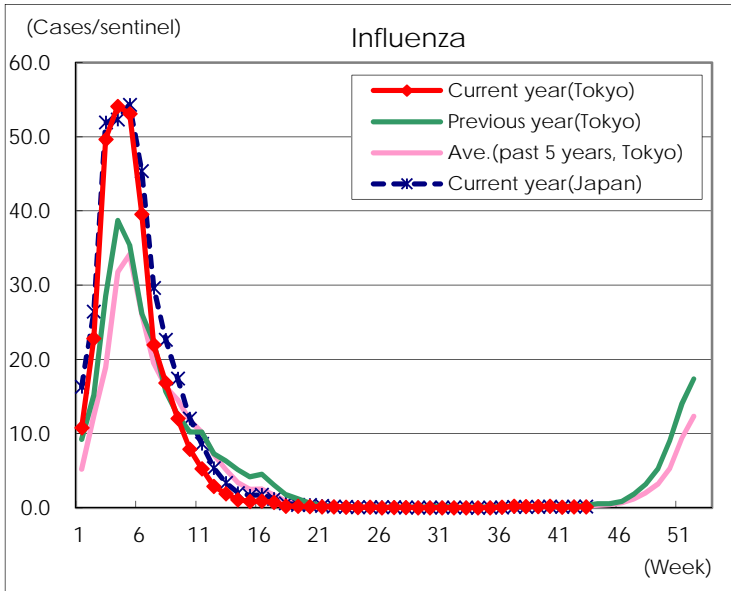
Diseases	Tokyo				
	40th	41st	42nd	43rd	/sentinel
Respiratory syncytial virus infection	340	249	228	168	0.66
Pharyngoconjunctival fever	55	48	52	45	0.18
Group A streptococcal pharyngitis	405	372	500	582	2.27
Infectious gastroenteritis	1,073	956	1,153	1,309	5.11
Chickenpox	56	79	68	60	0.23
Hand, foot, and mouth disease	483	362	373	352	1.38
Erythema infectiosum	339	240	262	324	1.27
Exanthem subitum	136	99	114	126	0.49
Herpangina	168	119	129	81	0.32
Mumps	30	16	21	20	0.08
Kawasaki disease	2	3	3	4	0.02
Cold with exanthems	34	44	43	37	0.14
Influenza	100	42	56	64	0.16
Acute hemorrhagic conjunctivitis		1		2	0.05
Epidemic keratoconjunctivitis	25	21	20	23	0.61
Bacterial meningitis			1		
Aseptic meningitis		2		1	0.04
<i>Mycoplasma pneumoniae</i>	4	7	5	16	0.64
Chlamydial pneumonia (excluding psittacosis)			1		
Infectious gastroenteritis (only by Rotavirus)					
Influenza-Associated Hospitalizations	1			1	0.04

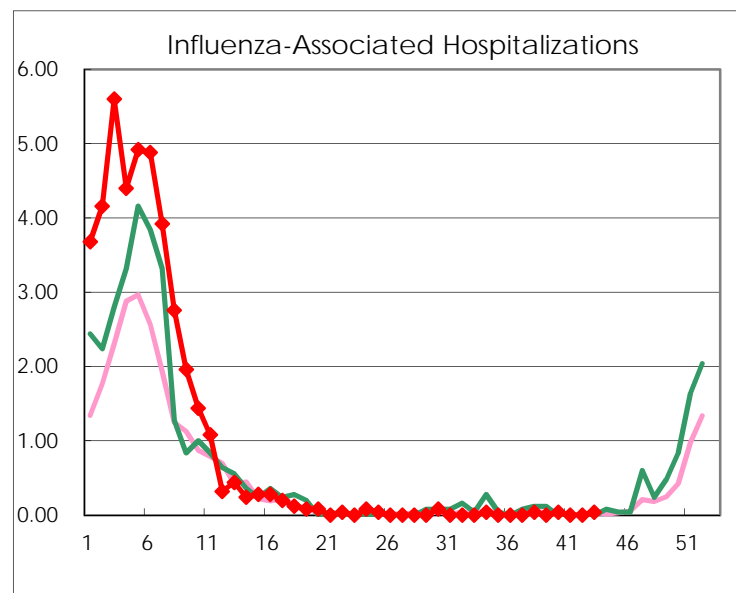
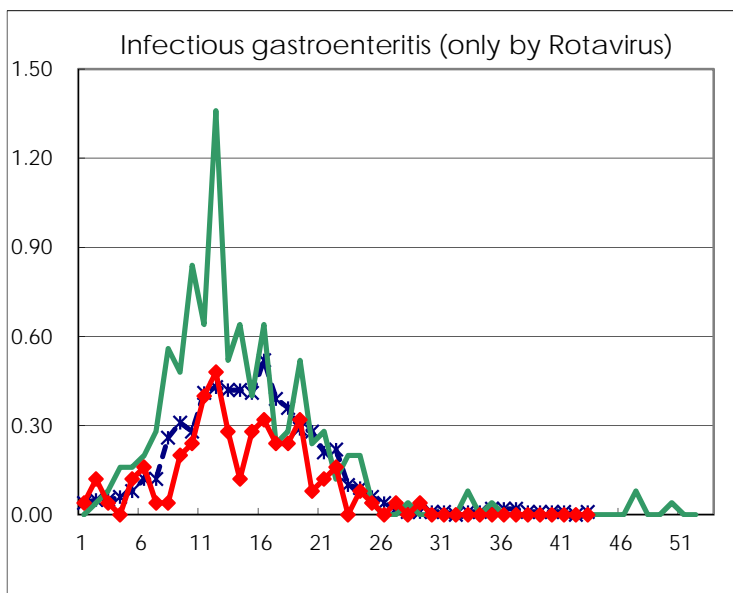
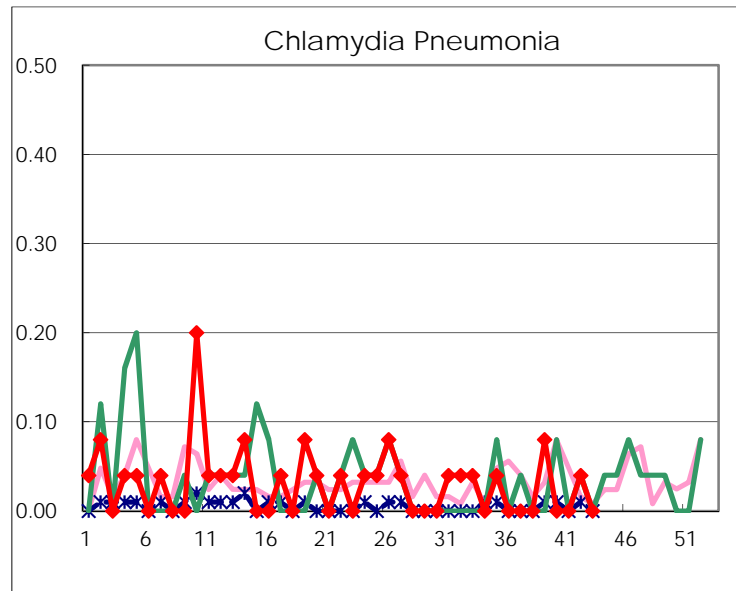
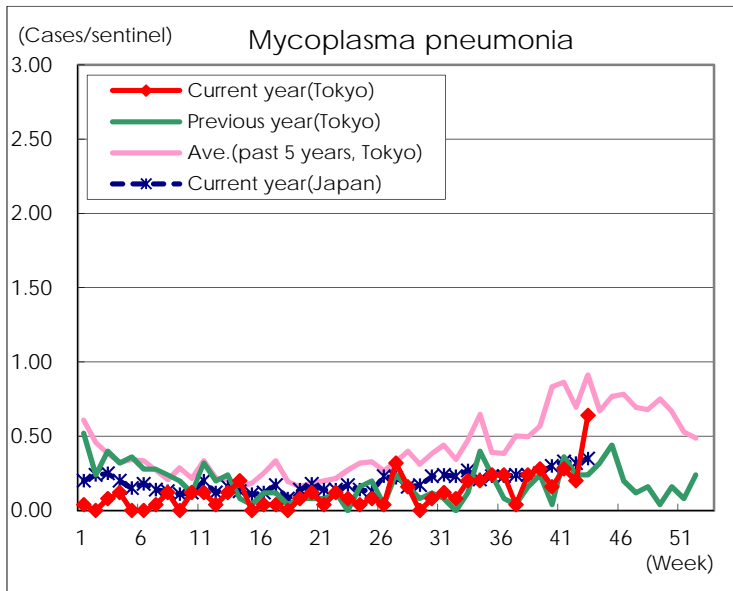
(Blank means 0.)

Disease Trend Graph (weekly reported cases per sentinel in comparison)









Number of sentinel facilities for weekly reporting		
Types of sentinels	Number of sentinels	Sentinels having reported
Pediatric	264	256
Influenza	419	409
Ophthalmic	39	38
Specially-designated	25	25