

8 November 2018 / Number 44

Surveillance System in Tokyo, Japan

The infectious diseases which all physicians must report

All physicians must report to health centers the incidence of the diseases which are shown at page one. Health centers electronically report the individual cases to Tokyo Metropolitan Infectious Disease Surveillance Center.

The infectious diseases required to be reported by the sentinels

The numbers of patients who visit the sentinel clinics or hospitals during a week are reported to health centers in Tokyo. And they electronically report the numbers to Tokyo Metropolitan Infectious Disease Surveillance Center. We have about 500 sentinel clinics and hospitals in Tokyo.

Tokyo Metropolitan Institute of Public Health

TEL:81-3-3363-3213 FAX:81-3-5332-7365

e-mail:www@tokyo-eiken.go.jp

URL:idsc.tokyo-eiken.go.jp/

Number of patients with the diseases which all physicians must report

Category	Diseases	Tokyo					Japan	
		41st	42nd	43rd	44th	Cum 2018	44th	Cum 2018
I	Ebola hemorrhagic fever							
	Crimean-Congo hemorrhagic fever							
	Smallpox							
	South American hemorrhagic fever							
	Plague							
	Marburg disease							
	Lassa fever							
II	Acute poliomyelitis							
	Tuberculosis	63	66	64	51	2,770	328	18,217
	Diphtheria							
	Severe Acute Respiratory Syndrome(SARS)							
	Middle East Respiratory Syndrome (MERS)							
	Avian influenza H5N1							
	Avian influenza H7N9							
III	Cholera							3
	Shigellosis	1	8	26	6	74	11	211
	Enterohemorrhagic Escherichia coli infection	4	16	7	11	432	63	3,603
	Typhoid fever	2				11	1	33
	Paratyphoid fever					7		19
IV	Hepatitis E	5	1		4	84	9	382
	West Nile fever							
	Hepatitis A	5	3	7	7	390	16	850
	Echinococcosis							10
	Yellow fever							
	Psittacosis	1				2		6
	Omsk hemorrhagic fever							
	Relapsing fever							5
	Kyasanur forest disease							
	Q fever					2		3
	Rabies							
	Coccidioidomycosis							2
	Monkeypox							
	Zika virus infection							
	Severe Fever with Thrombocytopenia Syndrome						1	74
	Hemorrhagic fever with renal syndrome							
	Western equine encephalitis							
	Tick-borne encephalitis							1
	Anthrax							
	Chikungunya fever							3
	Scrub typhus(Tsutsugamushi disease)				1	5	15	128
	Dengue fever	2	2	1	1	54	6	165
	Eastern equine encephalitis							
	Avian influenza (excluding H5N1 and H7N9)							
	Nipah virus infection							
	Japanese spotted fever						6	279
	Japanese encephalitis							
	Hantavirus pulmonary syndrome							
	Herpes B virus infection							
	Glanders							
	Brucellosis							3
	Venezuelan equine encephalitis							
	Hendra virus infection							
Epidemic typhus								
Botulism					1		2	
Malaria					13		45	
Tularemia								
Lyme disease					1		13	
Lyssavirus infection(excluding rabies)								
Rift valley fever								
Melioidosis					1		2	
Legionellosis	8	6	3	2	146	43	1,879	
Leptospirosis		2			5		30	
Rocky mountain spotted fever								

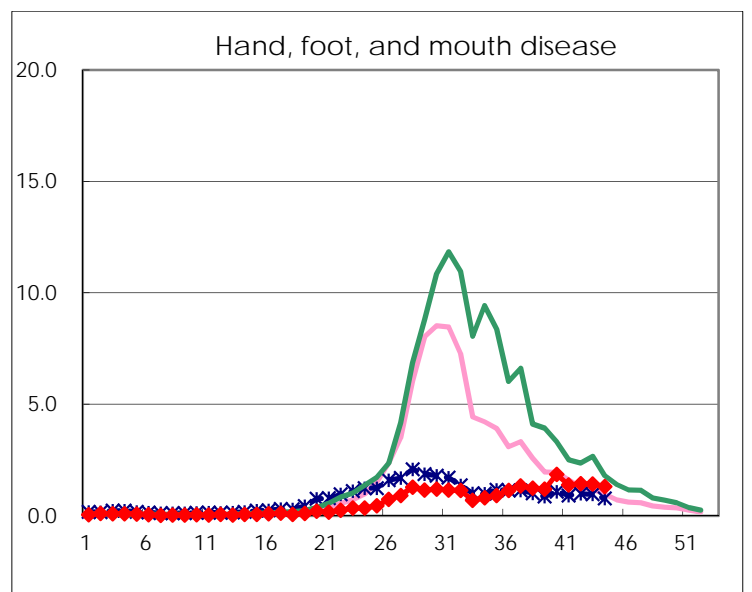
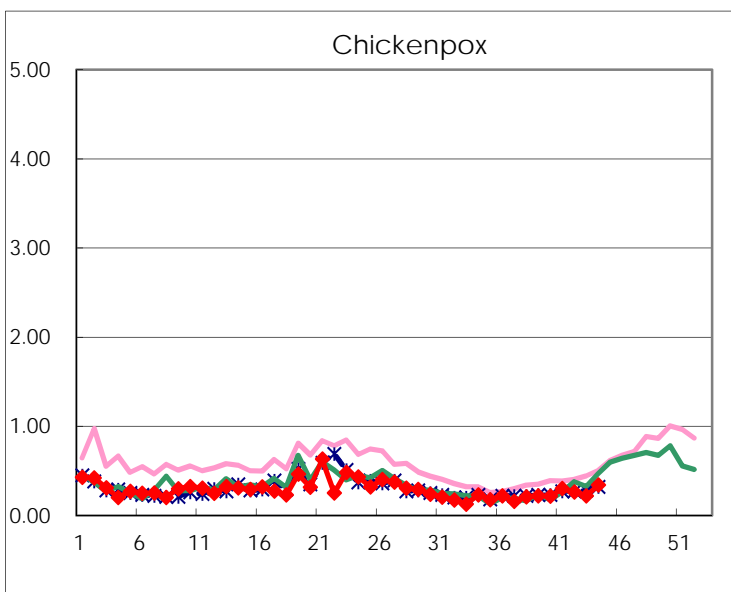
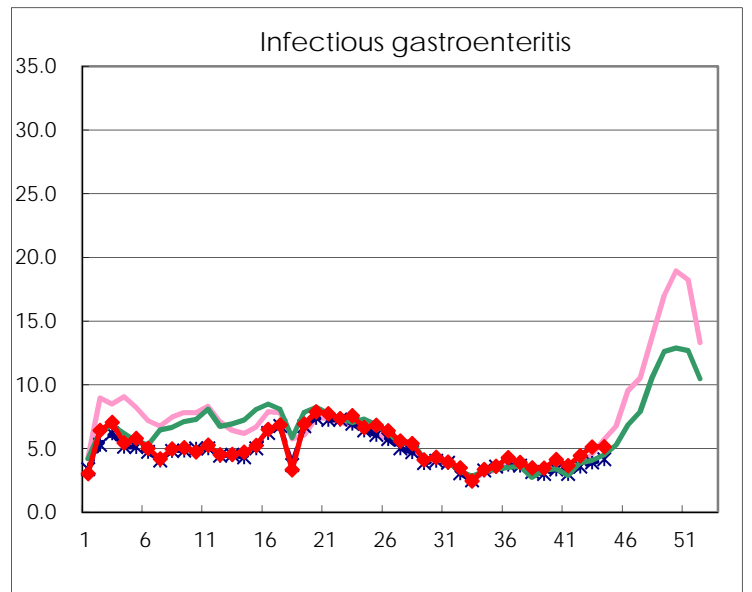
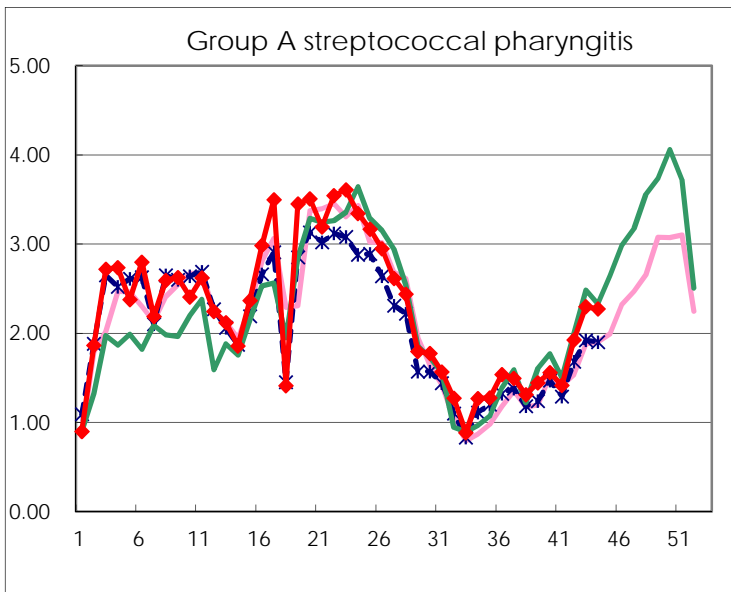
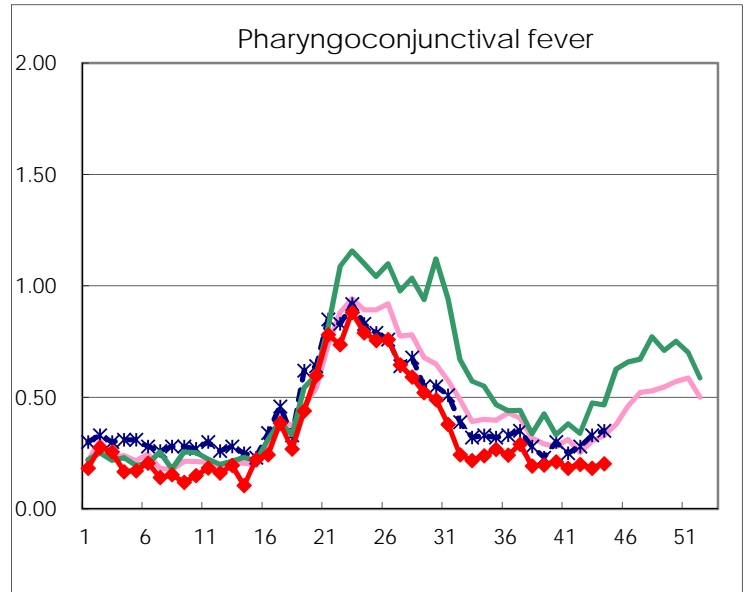
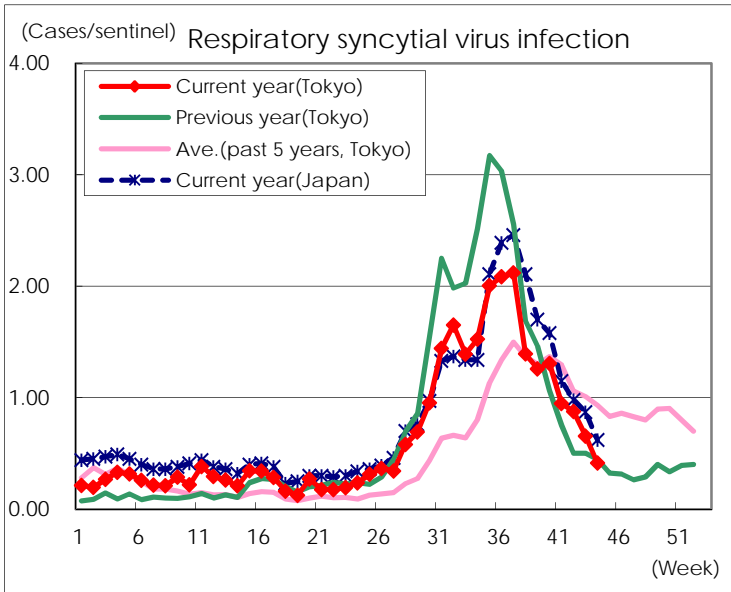
Category	Diseases	Tokyo					Japan	
		41st	42nd	43rd	44th	Cum 2018	44th	Cum 2018
V	Amebiasis	1	7	3	2	138	5	713
	Viral hepatitis(excluding hepatitis A and E)	2	4	1	2	55	1	208
	CRE infection	11	2	8	2	188	30	1,837
	Acute Flaccid Paralysis (excluding Acute poliomyelitis)		1	1	1	7	10	98
	Acute encephalitis(excluding JE and WNE)			3		52	8	550
	Cryptosporidiosis					3		23
	Creutzfeldt-Jakob disease	1	2	1	1	23	4	180
	Severe invasive streptococcal infections(TSLs)	3	1	1	1	77	7	581
	Acquired immunodeficiency syndrome (AIDS)	3	9	7	6	335	13	1,076
	Giardiasis			1		17	1	63
	Invasive <i>Haemophilus influenzae</i> disease	1	2	2	1	35	8	406
	Invasive meningococcal disease					6		29
	Invasive pneumococcal disease	7	1	10	6	316	40	2,670
	Varicella (limited to hospitalized case)		1	1	1	50	6	362
	Congenital rubella syndrome							
	Syphilis	39	33	41	36	1,482	76	5,811
	Disseminated cryptococcosis		1			16	2	152
	Tetanus	2				7	1	110
	Vancomycin-resistant <i>S. aureus</i> infection							
	Vancomycin-resistant <i>Enterococcus</i> infection					5	1	67
	Pertussis	67	105	90	119	1,738	316	8,776
Rubella	62	91	80	50	656	154	1,884	
Measles			2		17	2	245	
MDRA infection		1			4	1	21	

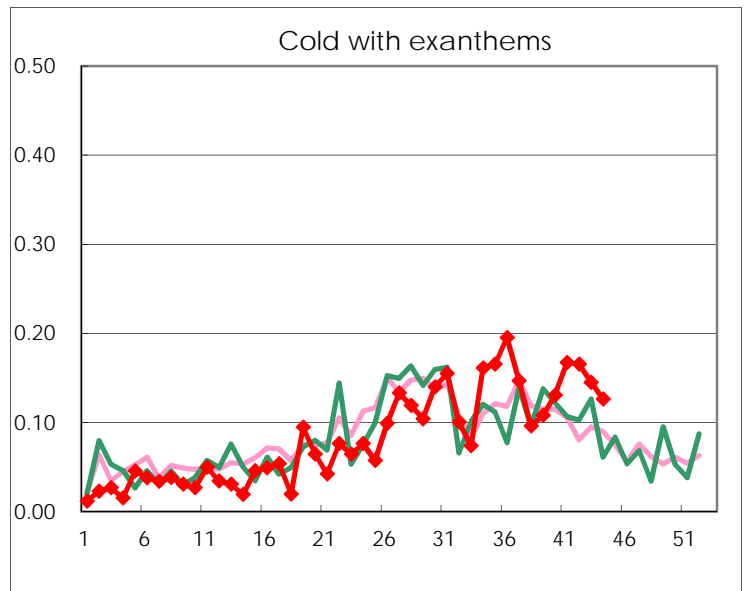
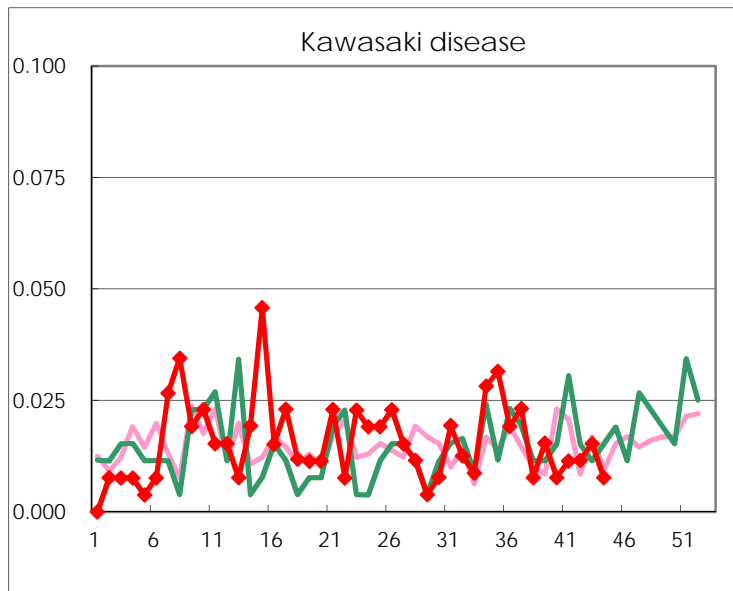
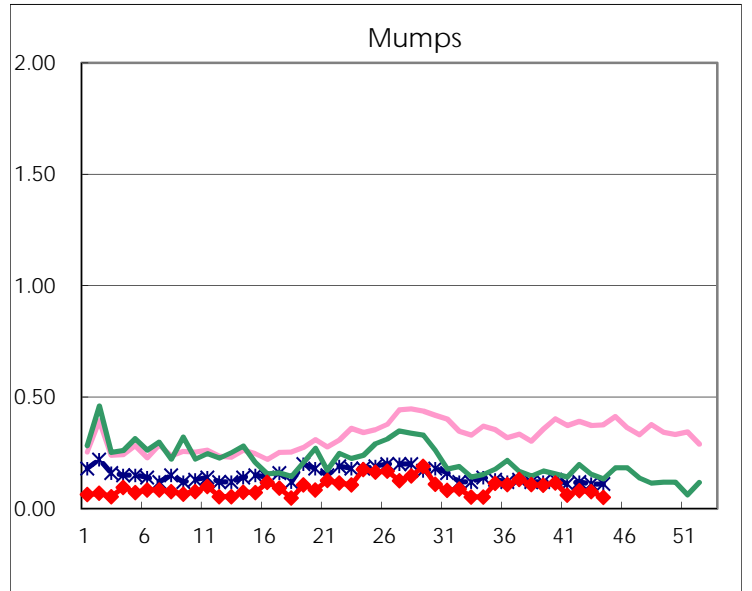
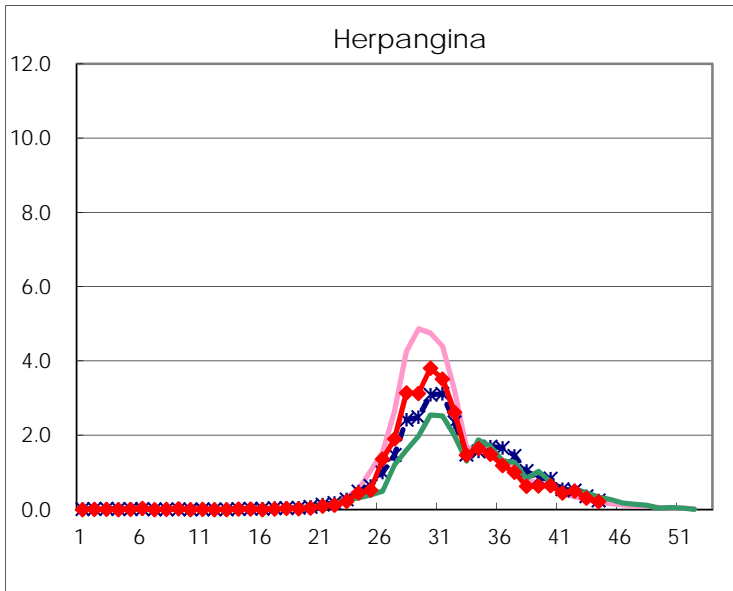
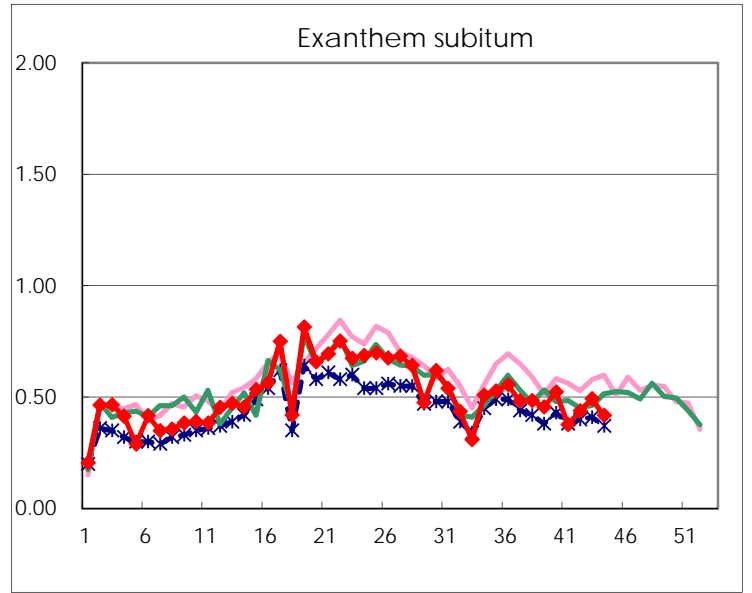
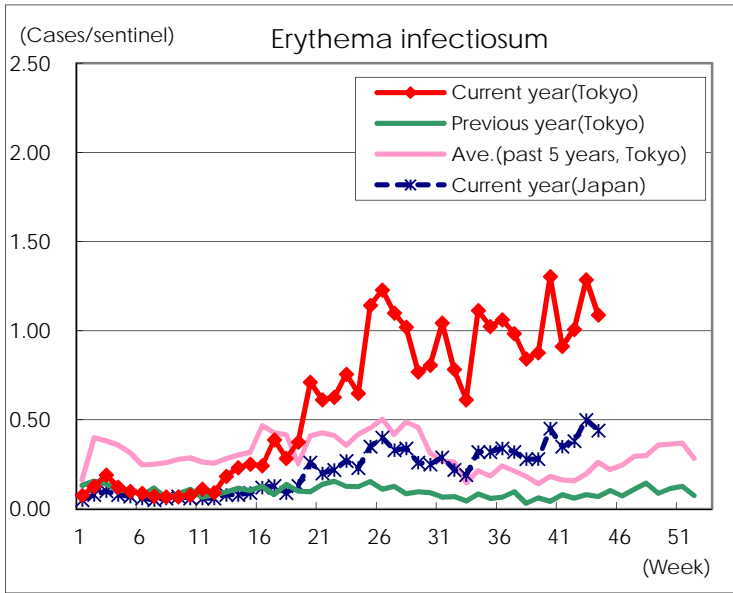
Number of patients with the diseases to be reported
by the designated clinics and hospitals

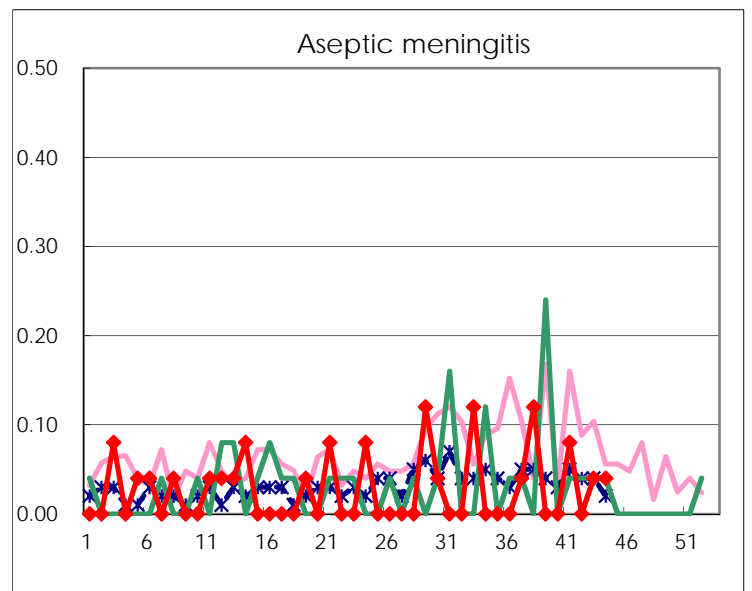
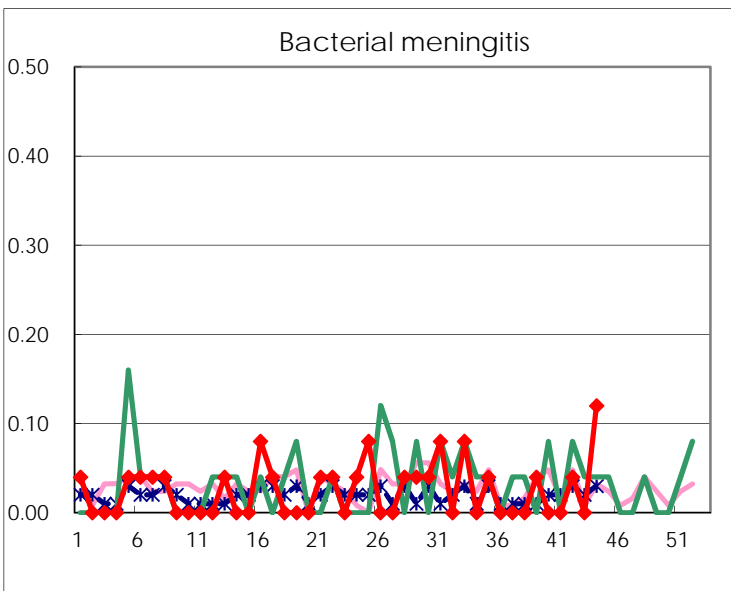
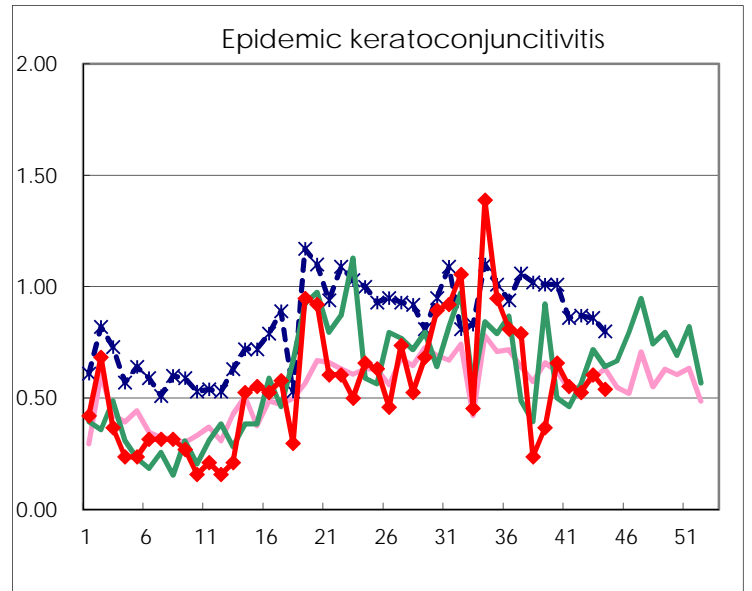
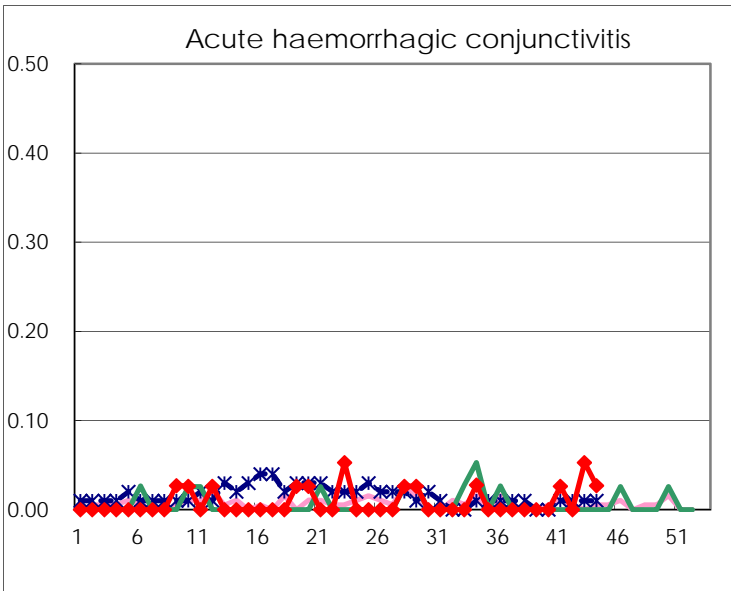
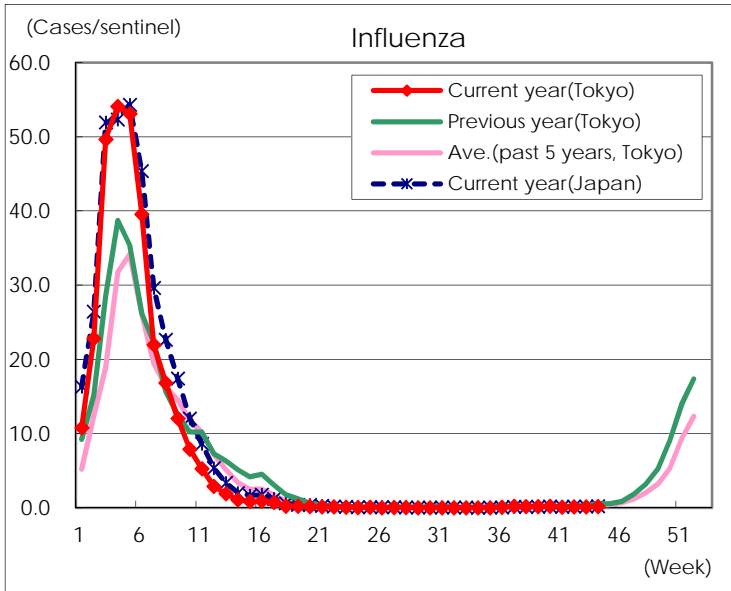
Diseases	Tokyo				
	41st	42nd	43rd	44th	/sentinel
Respiratory syncytial virus infection	249	228	172	108	0.41
Pharyngoconjunctival fever	48	52	48	53	0.20
Group A streptococcal pharyngitis	372	500	602	593	2.27
Infectious gastroenteritis	956	1,153	1,338	1,339	5.13
Chickenpox	79	68	57	89	0.34
Hand, foot, and mouth disease	362	373	372	342	1.31
Erythema infectiosum	240	262	337	284	1.09
Exanthem subitum	99	114	129	109	0.42
Herpangina	119	129	81	56	0.21
Mumps	16	21	20	13	0.05
Kawasaki disease	3	3	4	2	0.01
Cold with exanthems	44	43	38	33	0.13
Influenza	42	56	67	83	0.20
Acute hemorrhagic conjunctivitis	1		2	1	0.03
Epidemic keratoconjunctivitis	21	20	23	20	0.54
Bacterial meningitis		1		3	0.12
Aseptic meningitis	2		1	1	0.04
<i>Mycoplasma pneumoniae</i>	7	5	16	12	0.48
Chlamydial pneumonia (excluding psittacosis)		1			
Infectious gastroenteritis (only by Rotavirus)					
Influenza-Associated Hospitalizations			1		

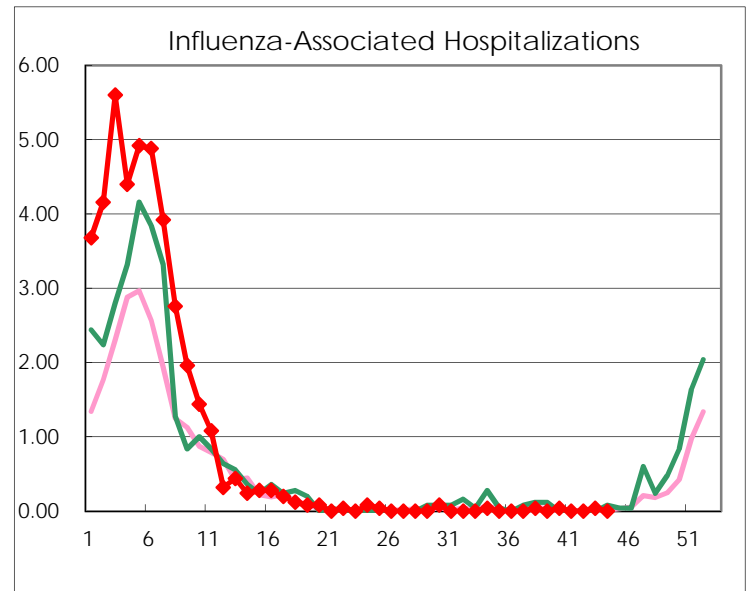
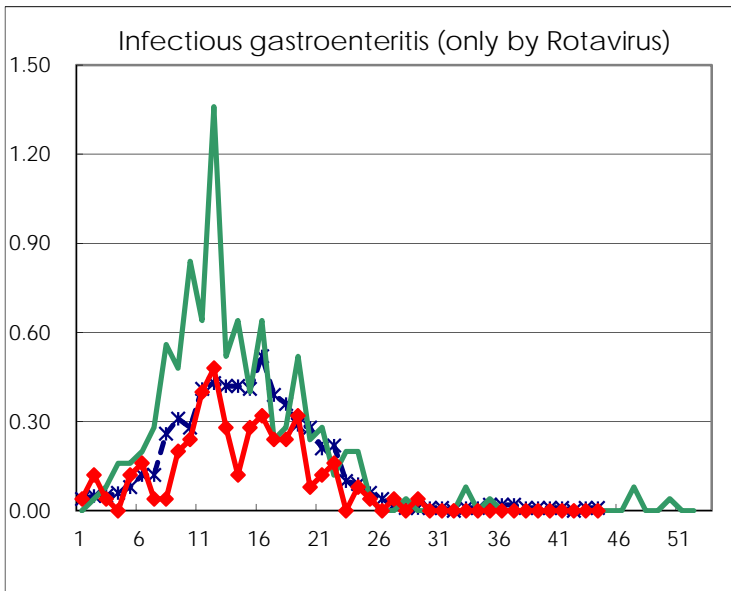
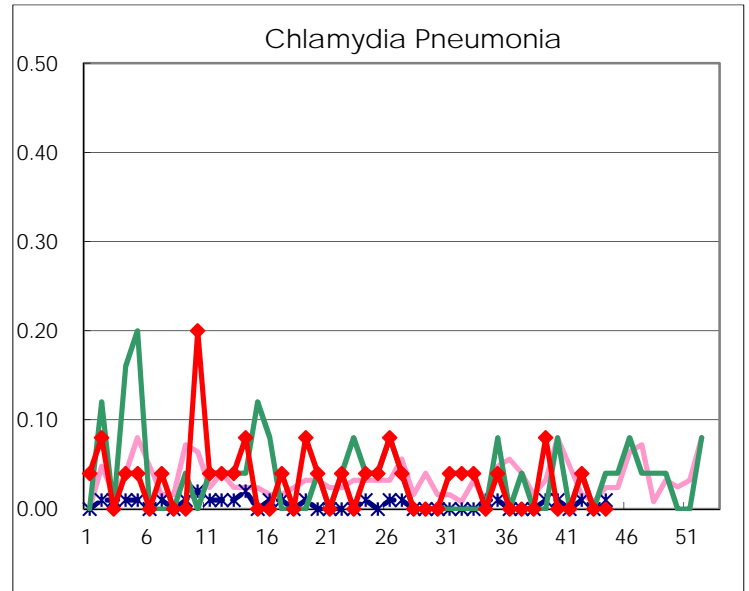
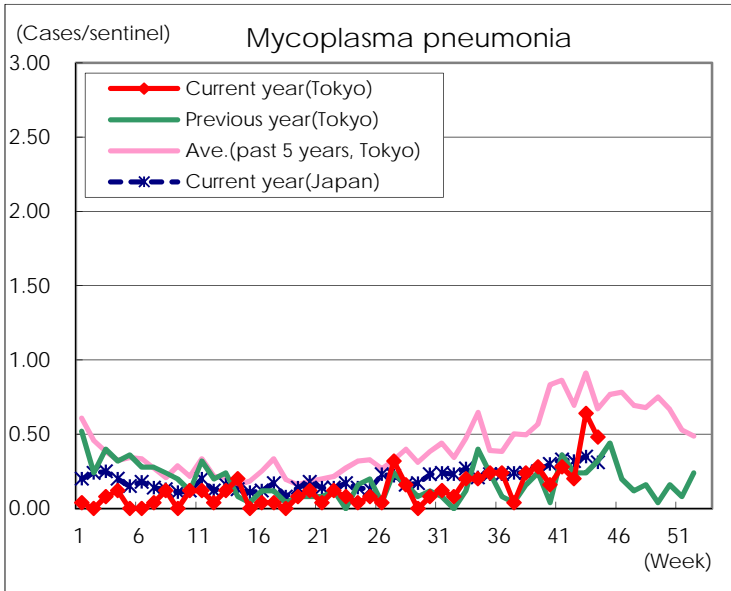
(Blank means 0.)

Disease Trend Graph (weekly reported cases per sentinel in comparison)









Number of sentinel facilities for weekly reporting		
Types of sentinels	Number of sentinels	Sentinels having reported
Pediatric	264	261
Influenza	419	411
Ophthalmic	39	37
Specially-designated	25	25