

15 November 2018 / Number 45

Surveillance System in Tokyo, Japan

The infectious diseases which all physicians must report

All physicians must report to health centers the incidence of the diseases which are shown at page one. Health centers electronically report the individual cases to Tokyo Metropolitan Infectious Disease Surveillance Center.

The infectious diseases required to be reported by the sentinels

The numbers of patients who visit the sentinel clinics or hospitals during a week are reported to health centers in Tokyo. And they electronically report the numbers to Tokyo Metropolitan Infectious Disease Surveillance Center. We have about 500 sentinel clinics and hospitals in Tokyo.

Tokyo Metropolitan Institute of Public Health

TEL:81-3-3363-3213 FAX:81-3-5332-7365

e-mail:www@tokyo-eiken.go.jp

URL:idsc.tokyo-eiken.go.jp/

Number of patients with the diseases which all physicians must report

Category	Diseases	Tokyo					Japan	
		42nd	43rd	44th	45th	Cum 2018	45th	Cum 2018
I	Ebola hemorrhagic fever							
	Crimean-Congo hemorrhagic fever							
	Smallpox							
	South American hemorrhagic fever							
	Plague							
	Marburg disease							
	Lassa fever							
II	Acute poliomyelitis							
	Tuberculosis	67	68	56	87	2,867	391	18,778
	Diphtheria							
	Severe Acute Respiratory Syndrome(SARS)							
	Middle East Respiratory Syndrome (MERS)							
	Avian influenza H5N1							
	Avian influenza H7N9							
III	Cholera						1	4
	Shigellosis	8	26	6		74	10	221
	Enterohemorrhagic Escherichia coli infection	16	7	11	5	437	42	3,651
	Typhoid fever					11	1	34
	Paratyphoid fever					7	1	20
IV	Hepatitis E	1		4	5	89	8	391
	West Nile fever							
	Hepatitis A	3	7	7	5	395	6	859
	Echinococcosis						1	11
	Yellow fever							
	Psittacosis					2		6
	Omsk hemorrhagic fever							
	Relapsing fever							5
	Kyasanur forest disease							
	Q fever					2		3
	Rabies							
	Coccidioidomycosis							2
	Monkeypox							
	Zika virus infection							
	Severe Fever with Thrombocytopenia Syndrome							74
	Hemorrhagic fever with renal syndrome							
	Western equine encephalitis							
	Tick-borne encephalitis							1
	Anthrax							
	Chikungunya fever							3
	Scrub typhus(Tsutsugamushi disease)			1	1	6	17	150
	Dengue fever	2	1	1	3	57	8	175
	Eastern equine encephalitis							
	Avian influenza (excluding H5N1 and H7N9)							
	Nipah virus infection							
	Japanese spotted fever						6	285
	Japanese encephalitis							
	Hantavirus pulmonary syndrome							
	Herpes B virus infection							
	Glanders							
	Brucellosis							3
	Venezuelan equine encephalitis							
	Hendra virus infection							
Epidemic typhus								
Botulism					1		2	
Malaria					13	2	47	
Tularemia								
Lyme disease					1		13	
Lyssavirus infection(excluding rabies)								
Rift valley fever								
Melioidosis					1		2	
Legionellosis	6	3	2	2	148	33	1,916	
Leptospirosis	2				5		30	
Rocky mountain spotted fever								

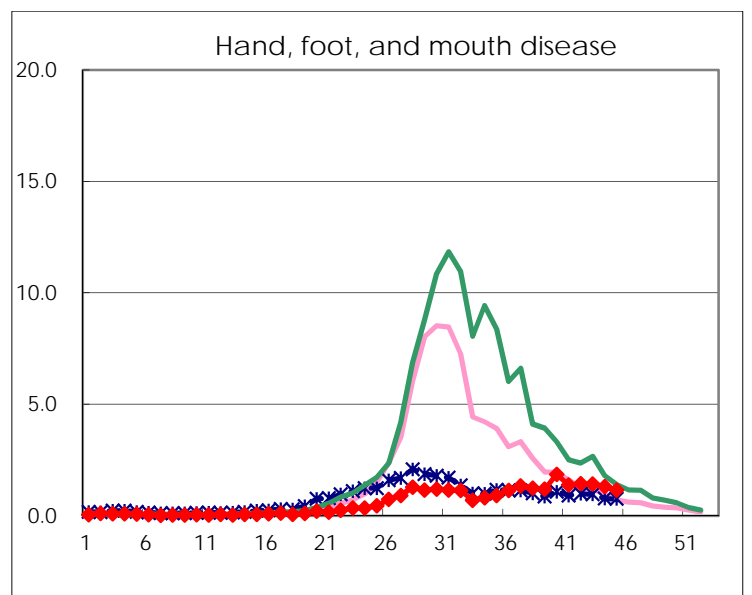
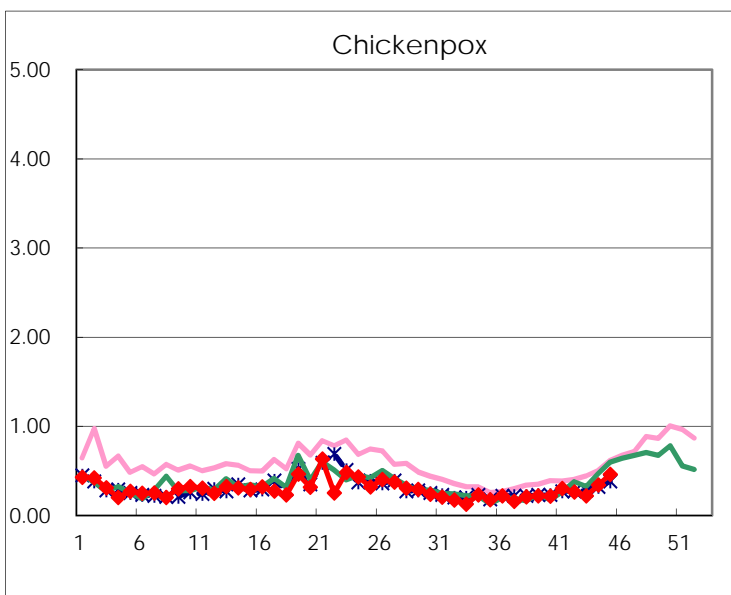
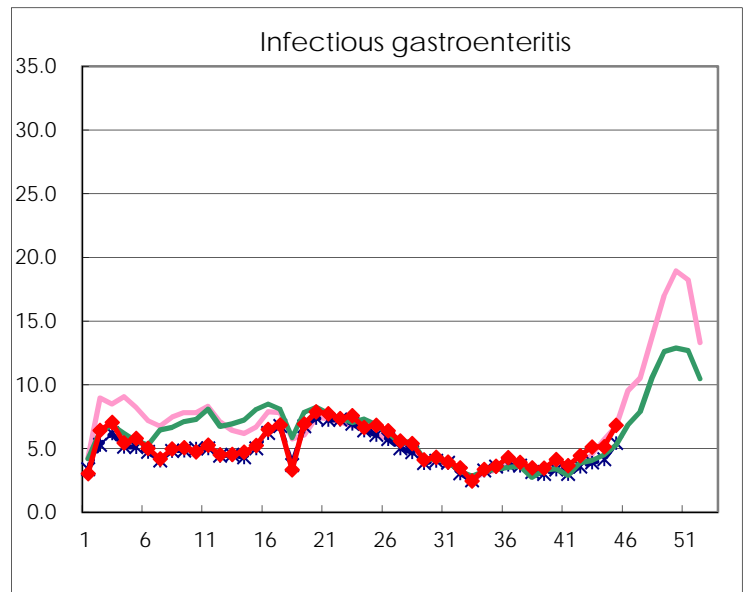
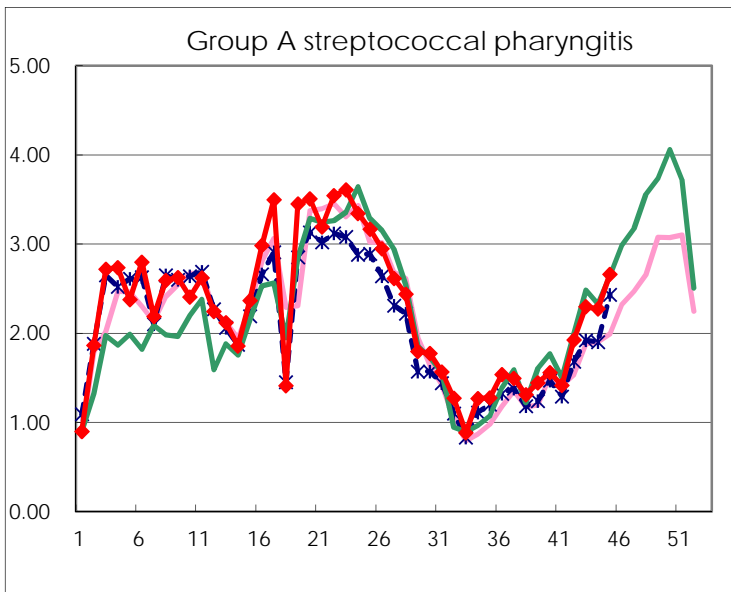
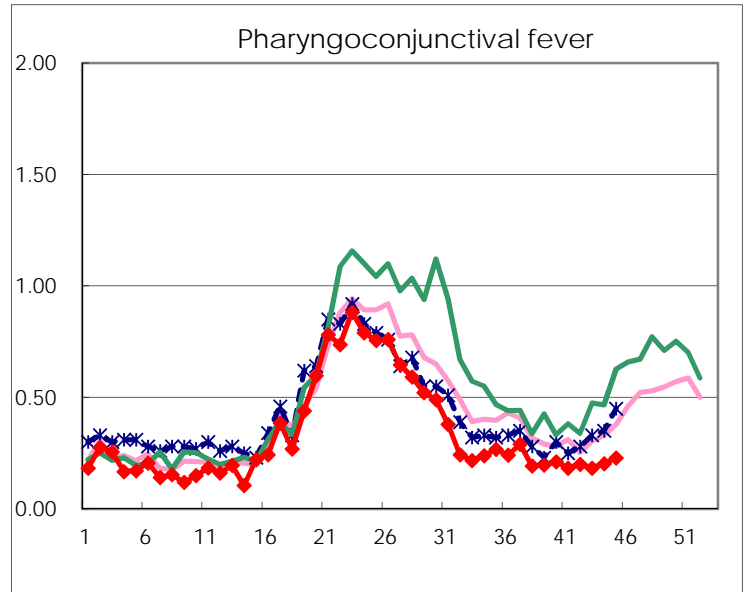
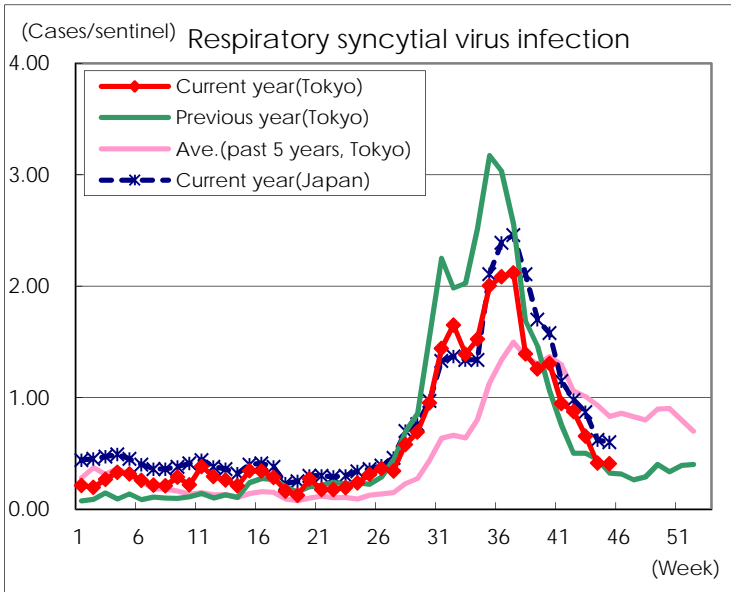
Category	Diseases	Tokyo					Japan	
		42nd	43rd	44th	45th	Cum 2018	45th	Cum 2018
V	Amebiasis	7	3	2		138	6	722
	Viral hepatitis(excluding hepatitis A and E)	4	1	2		55	1	212
	CRE infection	3	8	2	4	193	23	1,882
	Acute Flaccid Paralysis (excluding Acute poliomyelitis)	1	1	1		7	10	108
	Acute encephalitis(excluding JE and WNE)		3		1	53	5	562
	Cryptosporidiosis					3	1	24
	Creutzfeldt-Jakob disease	2	1	1	1	24	2	182
	Severe invasive streptococcal infections(TSLs)	1	1	1	2	79	7	593
	Acquired immunodeficiency syndrome (AIDS)	9	7	7	15	351	19	1,108
	Giardiasis		1			17		63
	Invasive <i>Haemophilus influenzae</i> disease	2	2	1		35	4	412
	Invasive meningococcal disease					6		30
	Invasive pneumococcal disease	1	10	6	2	318	55	2,731
	Varicella (limited to hospitalized case)	1	1	1	1	51	4	374
	Congenital rubella syndrome							
	Syphilis	33	41	36	34	1,516	98	5,955
	Disseminated cryptococcosis	1			1	17		154
	Tetanus					7		110
	Vancomycin-resistant <i>S. aureus</i> infection							
	Vancomycin-resistant <i>Enterococcus</i> infection					5	2	69
	Pertussis	105	90	124	85	1,828	259	9,127
	Rubella	91	80	53	57	716	139	2,032
Measles		2			18	4	251	
MDRA infection	1				4		20	

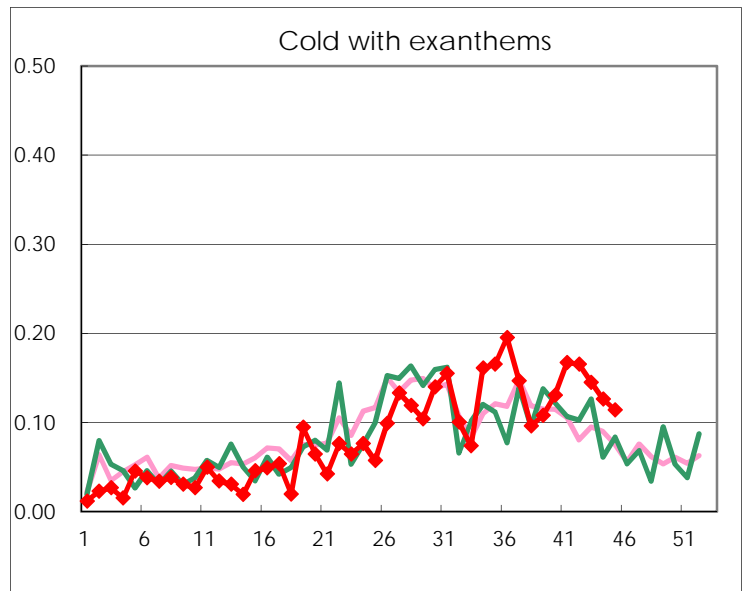
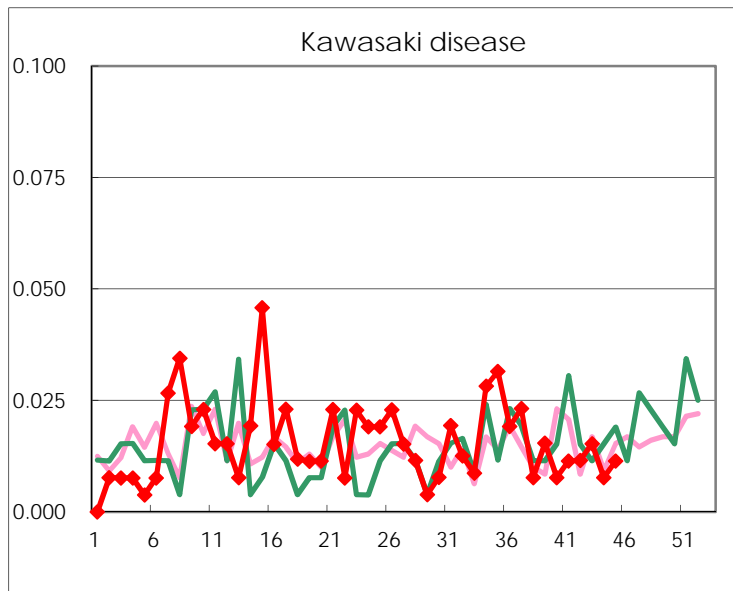
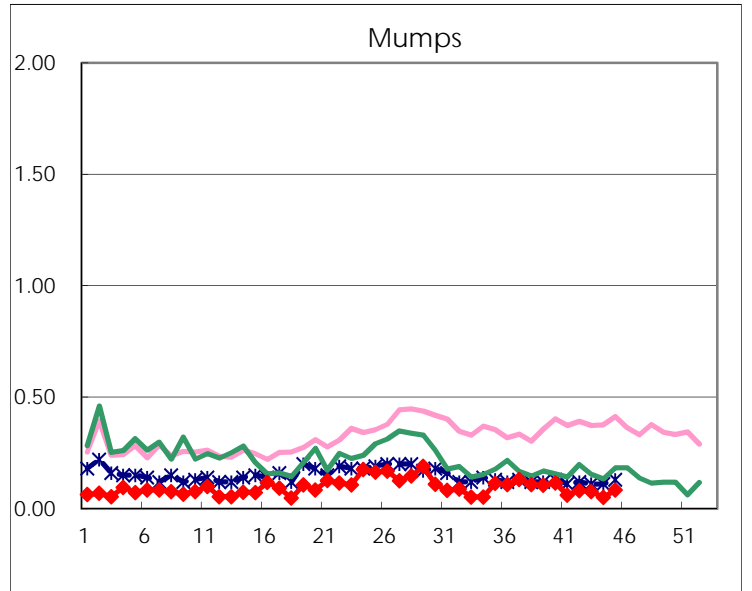
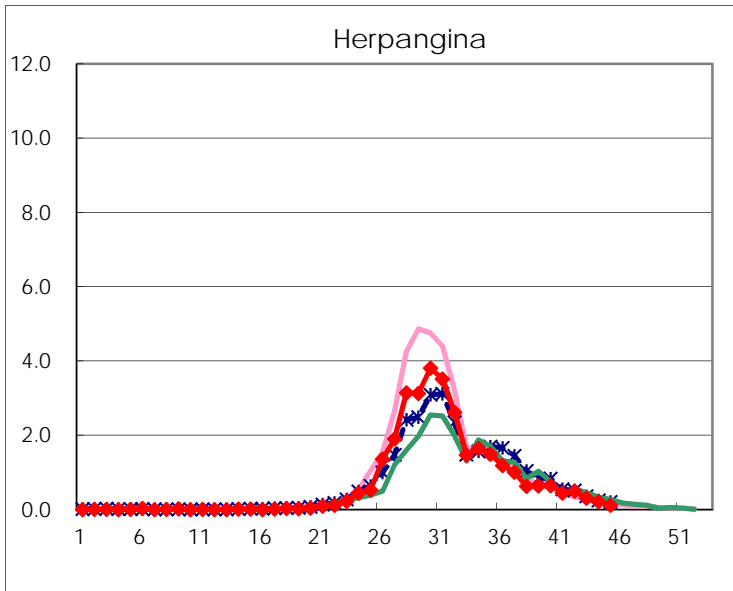
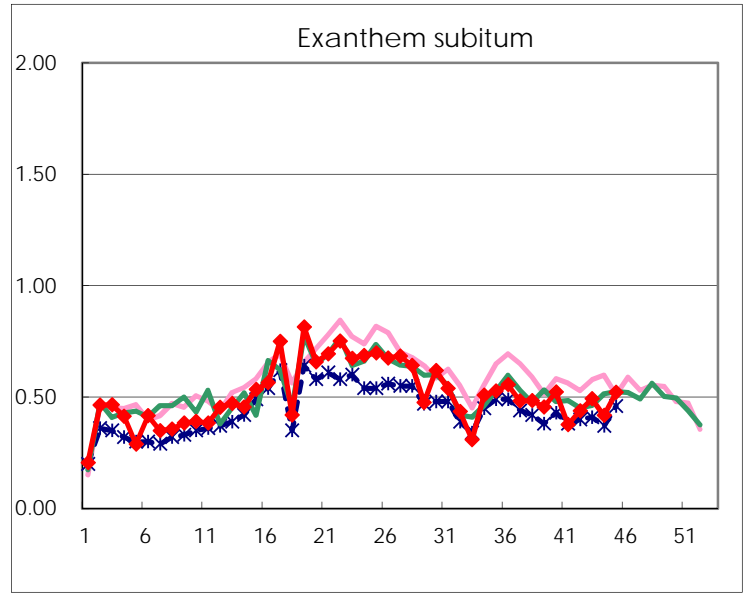
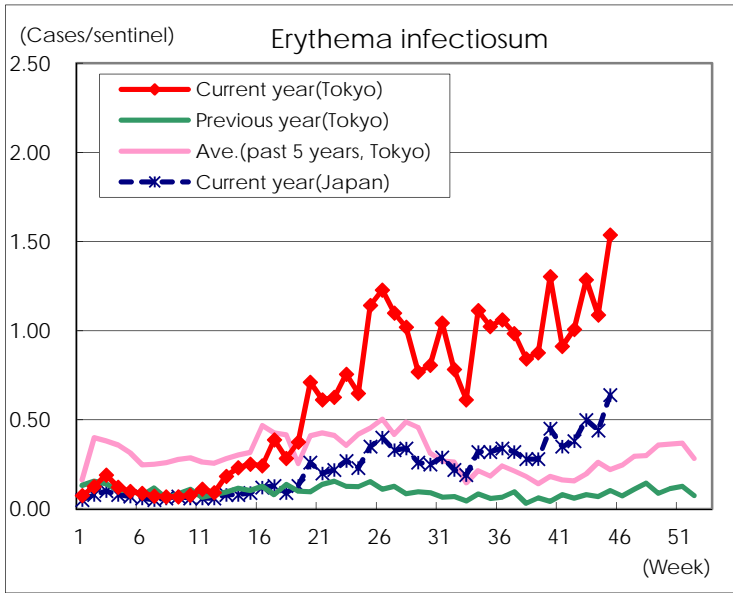
Number of patients with the diseases to be reported
by the designated clinics and hospitals

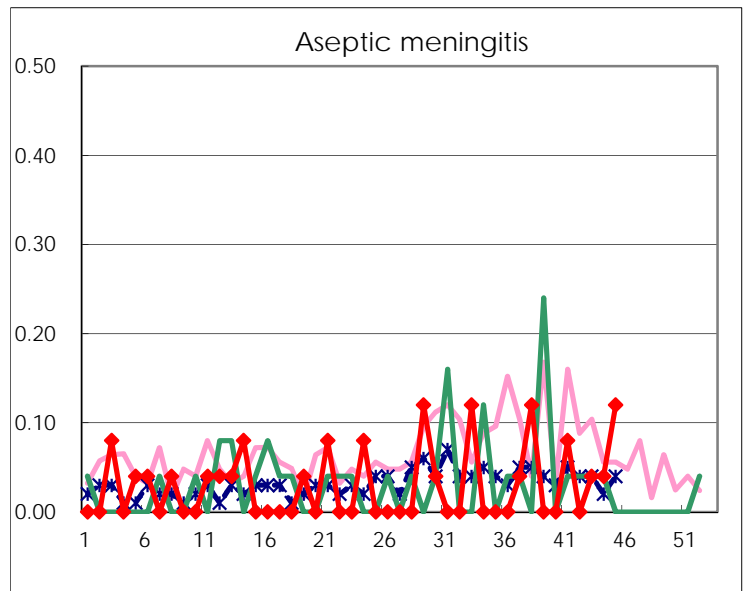
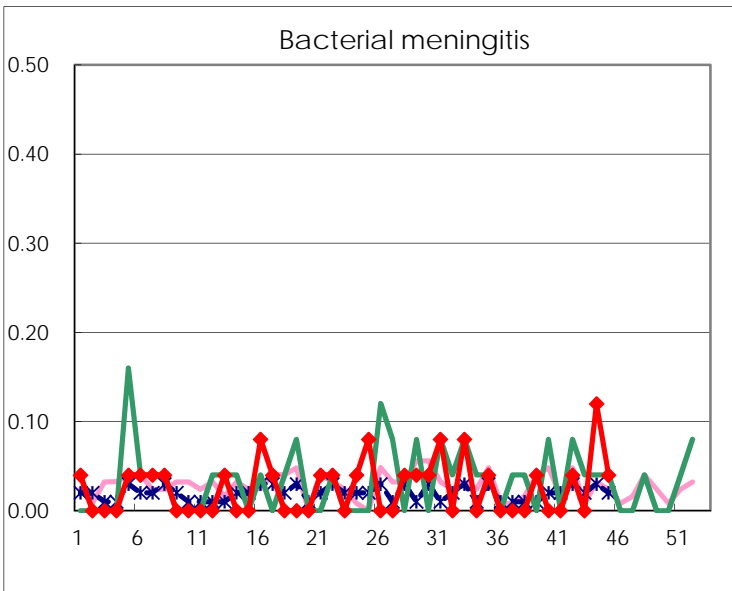
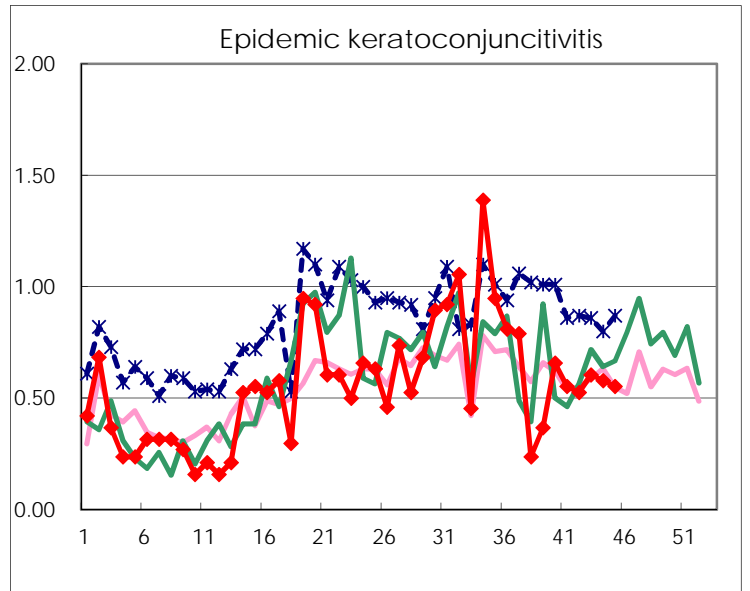
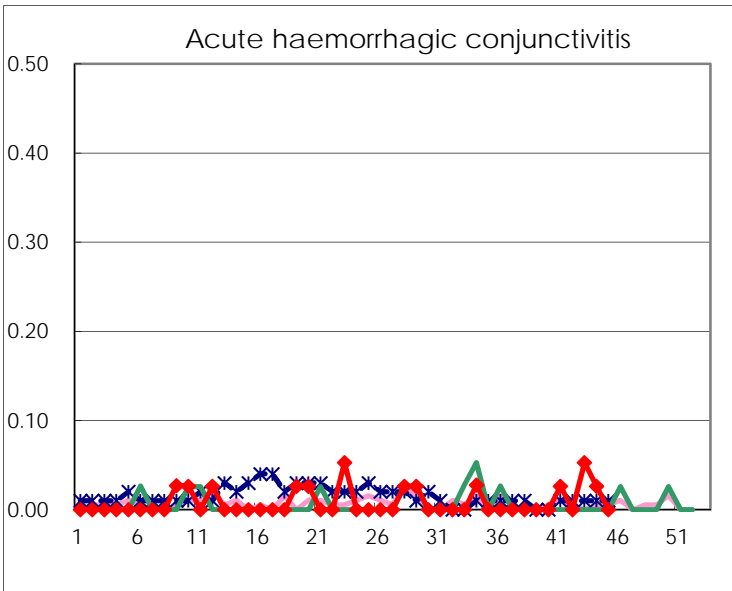
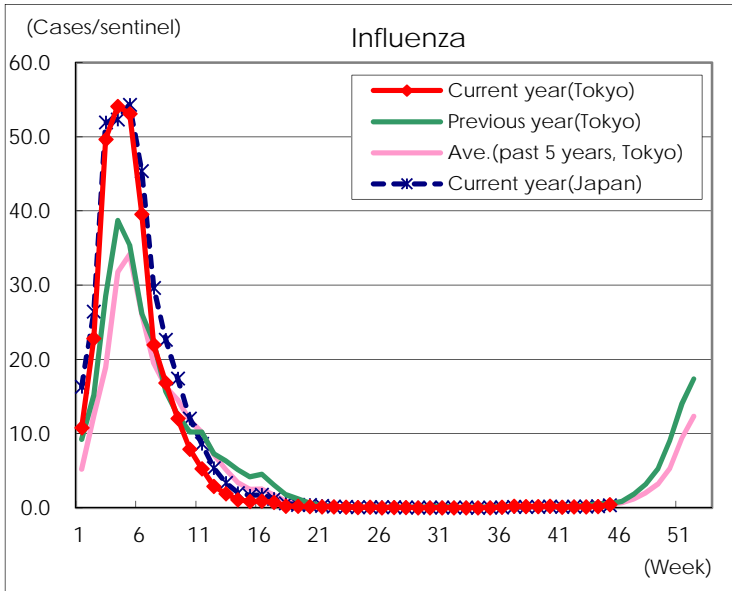
Diseases	Tokyo				
	42nd	43rd	44th	45th	/sentinel
Respiratory syncytial virus infection	228	172	108	107	0.41
Pharyngoconjunctival fever	52	48	53	60	0.23
Group A streptococcal pharyngitis	500	602	593	700	2.66
Infectious gastroenteritis	1,153	1,338	1,339	1,791	6.81
Chickenpox	68	57	89	121	0.46
Hand, foot, and mouth disease	373	372	342	301	1.14
Erythema infectiosum	262	337	284	404	1.54
Exanthem subitum	114	129	109	137	0.52
Herpangina	129	81	56	31	0.12
Mumps	21	20	13	22	0.08
Kawasaki disease	3	4	2	3	0.01
Cold with exanthems	43	38	33	30	0.11
Influenza	56	67	83	184	0.45
Acute hemorrhagic conjunctivitis		2	1		
Epidemic keratoconjunctivitis	20	23	22	21	0.55
Bacterial meningitis	1		3	1	0.04
Aseptic meningitis		1	1	3	0.12
<i>Mycoplasma pneumoniae</i>	5	16	12	12	0.48
Chlamydial pneumonia (excluding psittacosis)	1				
Infectious gastroenteritis (only by Rotavirus)					
Influenza-Associated Hospitalizations		1		1	0.04

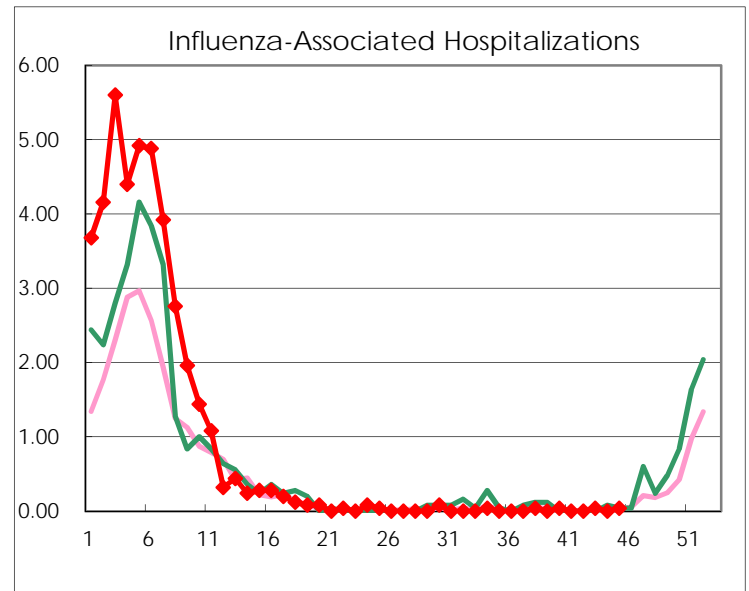
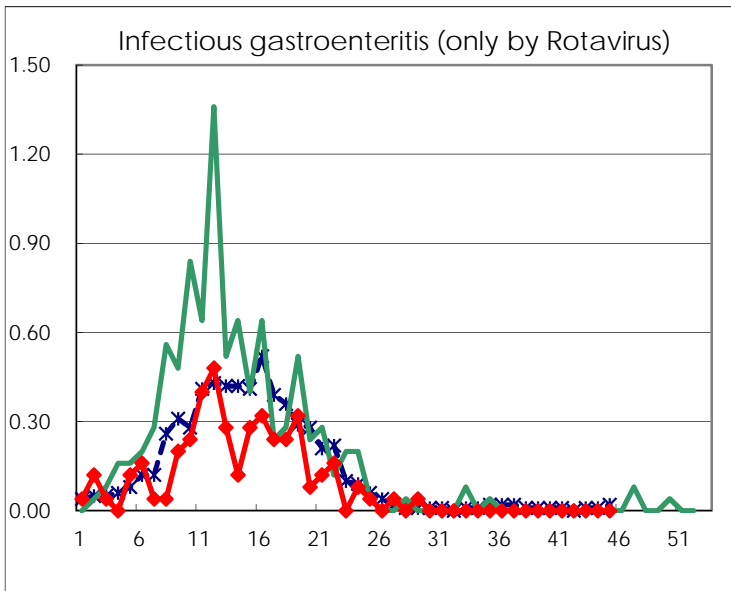
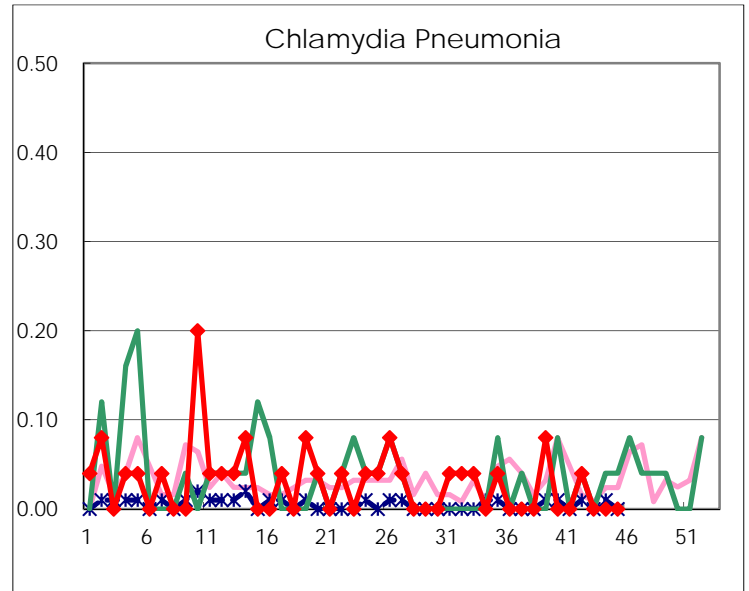
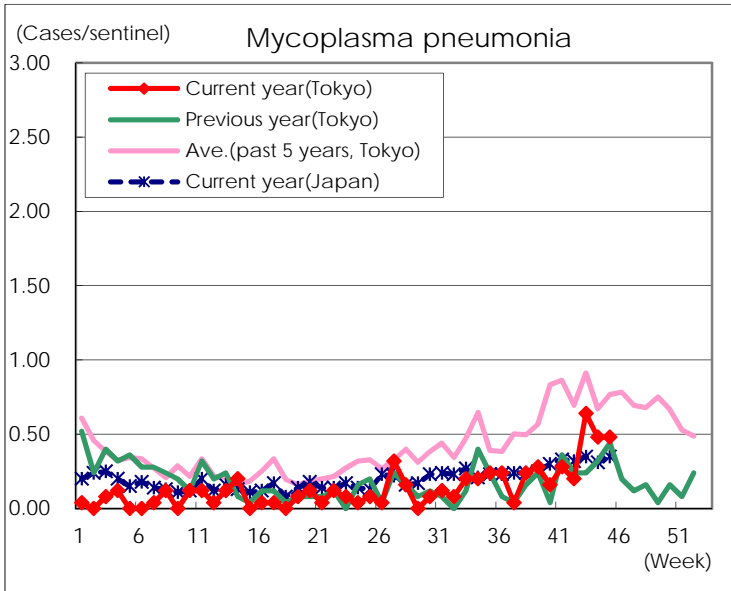
(Blank means 0.)

Disease Trend Graph (weekly reported cases per sentinel in comparison)









Number of sentinel facilities for weekly reporting		
Types of sentinels	Number of sentinels	Sentinels having reported
Pediatric	264	263
Influenza	419	412
Ophthalmic	39	38
Specially-designated	25	25