

22 November 2018 / Number 46

Surveillance System in Tokyo, Japan

The infectious diseases which all physicians must report

All physicians must report to health centers the incidence of the diseases which are shown at page one. Health centers electronically report the individual cases to Tokyo Metropolitan Infectious Disease Surveillance Center.

The infectious diseases required to be reported by the sentinels

The numbers of patients who visit the sentinel clinics or hospitals during a week are reported to health centers in Tokyo. And they electronically report the numbers to Tokyo Metropolitan Infectious Disease Surveillance Center. We have about 500 sentinel clinics and hospitals in Tokyo.

Tokyo Metropolitan Institute of Public Health

TEL:81-3-3363-3213 FAX:81-3-5332-7365

e-mail:www@tokyo-eiken.go.jp

URL:idsc.tokyo-eiken.go.jp/

Number of patients with the diseases which all physicians must report

Category	Diseases	Tokyo					Japan	
		43rd	44th	45th	46th	Cum 2018	46th	Cum 2018
I	Ebola hemorrhagic fever							
	Crimean-Congo hemorrhagic fever							
	Smallpox							
	South American hemorrhagic fever							
	Plague							
	Marburg disease							
	Lassa fever							
II	Acute poliomyelitis							
	Tuberculosis	69	58	90	49	2,925	357	19,212
	Diphtheria							
	Severe Acute Respiratory Syndrome(SARS)							
	Middle East Respiratory Syndrome (MERS)							
	Avian influenza H5N1							
	Avian influenza H7N9							
III	Cholera							4
	Shigellosis	26	6			74		221
	Enterohemorrhagic Escherichia coli infection	7	11	5	3	440	34	3,684
	Typhoid fever					11		34
	Paratyphoid fever				1	8	1	21
IV	Hepatitis E		4	5	2	91	7	399
	West Nile fever							
	Hepatitis A	7	7	5	7	402	12	873
	Echinococcosis							11
	Yellow fever							
	Psittacosis					2		6
	Omsk hemorrhagic fever							
	Relapsing fever							6
	Kyasanur forest disease							
	Q fever					2		3
	Rabies							
	Coccidioidomycosis							2
	Monkeypox							
	Zika virus infection							
	Severe Fever with Thrombocytopenia Syndrome							74
	Hemorrhagic fever with renal syndrome							
	Western equine encephalitis							
	Tick-borne encephalitis							1
	Anthrax							
	Chikungunya fever							3
	Scrub typhus(Tsutsugamushi disease)		1	1		6	33	189
	Dengue fever	1	1	3		57	2	177
	Eastern equine encephalitis							
	Avian influenza (excluding H5N1 and H7N9)							
	Nipah virus infection							
	Japanese spotted fever						3	288
	Japanese encephalitis							
	Hantavirus pulmonary syndrome							
	Herpes B virus infection							
	Glanders							
	Brucellosis							3
	Venezuelan equine encephalitis							
	Hendra virus infection							
Epidemic typhus								
Botulism					1		2	
Malaria					13		47	
Tularemia								
Lyme disease					1		13	
Lyssavirus infection(excluding rabies)								
Rift valley fever								
Melioidosis					1		2	
Legionellosis	3	2	2	1	149	18	1,938	
Leptospirosis					5		30	
Rocky mountain spotted fever								

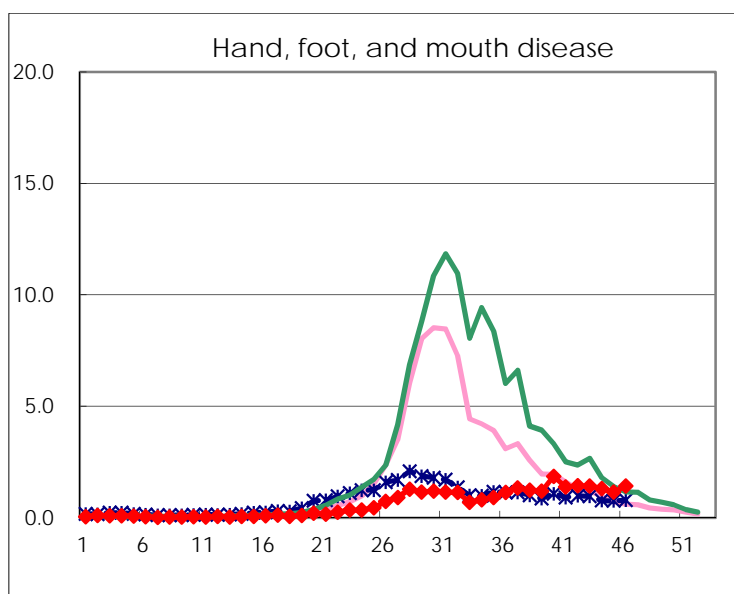
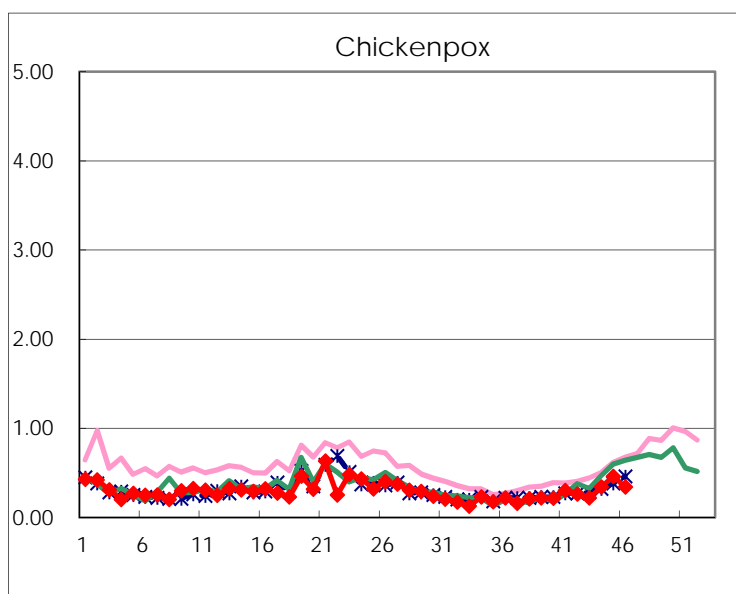
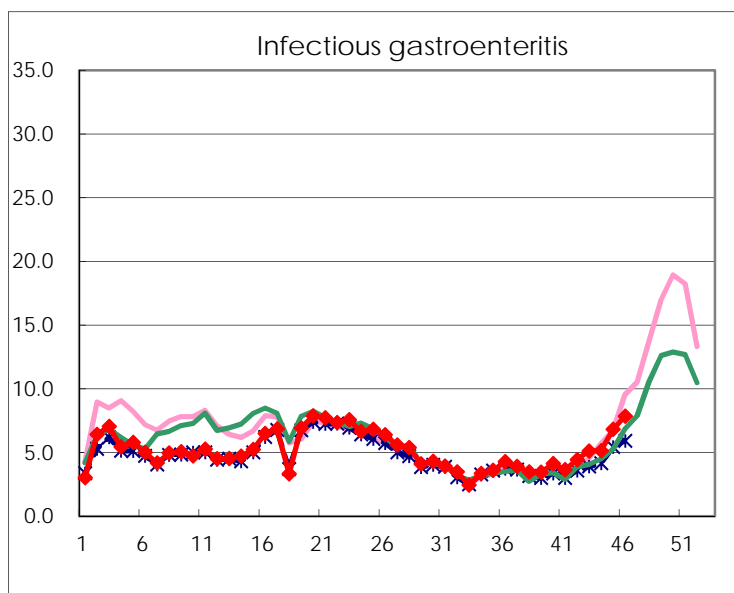
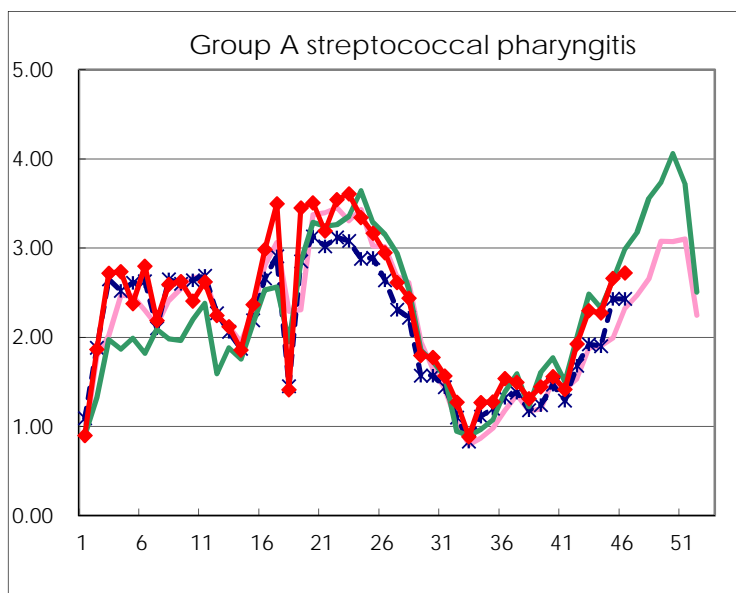
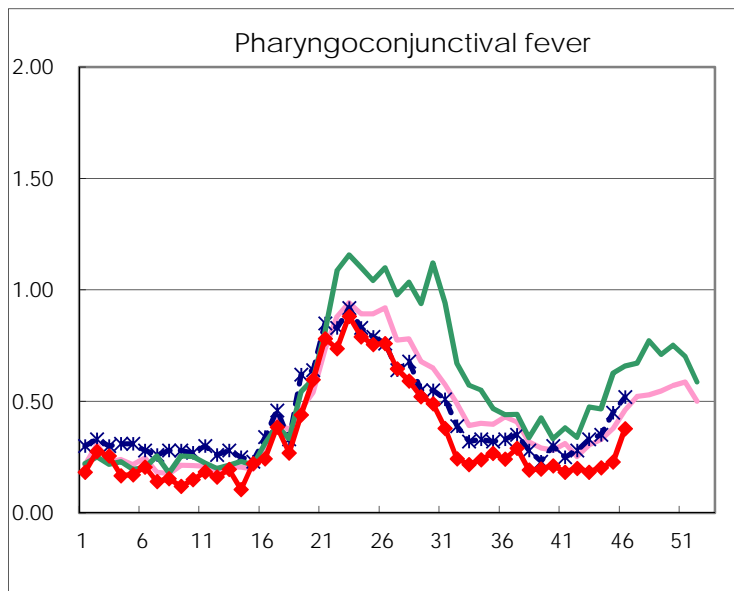
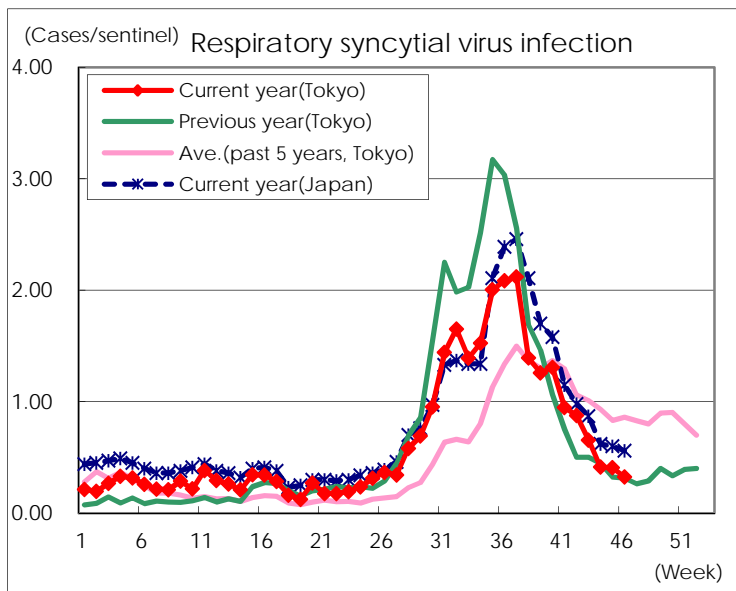
Category	Diseases	Tokyo					Japan	
		43rd	44th	45th	46th	Cum 2018	46th	Cum 2018
V	Amebiasis	3	2		1	139	8	733
	Viral hepatitis(excluding hepatitis A and E)	1	2		1	56	2	220
	CRE infection	8	2	4	4	198	43	1,958
	Acute Flaccid Paralysis (excluding Acute poliomyelitis)	1	1			7	4	111
	Acute encephalitis(excluding JE and WNE)	3		1	3	56	9	576
	Cryptosporidiosis					3		24
	Creutzfeldt-Jakob disease	1	1	1		24	3	188
	Severe invasive streptococcal infections(TSLs)	1	1	2	1	80	9	610
	Acquired immunodeficiency syndrome (AIDS)	7	7	15	11	362	15	1,136
	Giardiasis	1			2	19	1	66
	Invasive <i>Haemophilus influenzae</i> disease	2	1			35	3	418
	Invasive meningococcal disease					6		31
	Invasive pneumococcal disease	10	6	2	14	332	46	2,806
	Varicella (limited to hospitalized case)	1	1	1	2	53	9	388
	Congenital rubella syndrome							
	Syphilis	41	36	34	40	1,556	87	6,096
	Disseminated cryptococcosis			1		17	2	157
	Tetanus					7	2	115
	Vancomycin-resistant <i>S. aureus</i> infection							
	Vancomycin-resistant <i>Enterococcus</i> infection					5	1	70
	Pertussis	90	124	89	77	1,909	290	9,543
	Rubella	80	53	59	45	763	123	2,186
Measles	2			1	18	4	255	
MDRA infection					4		20	

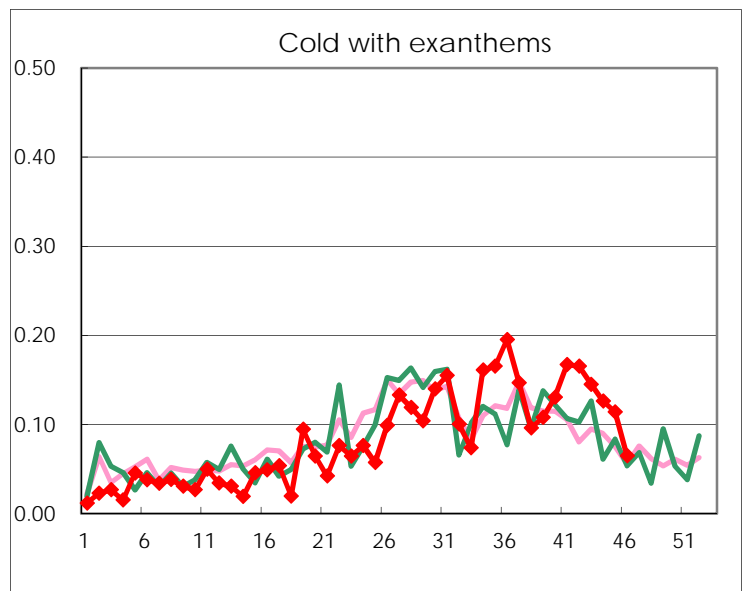
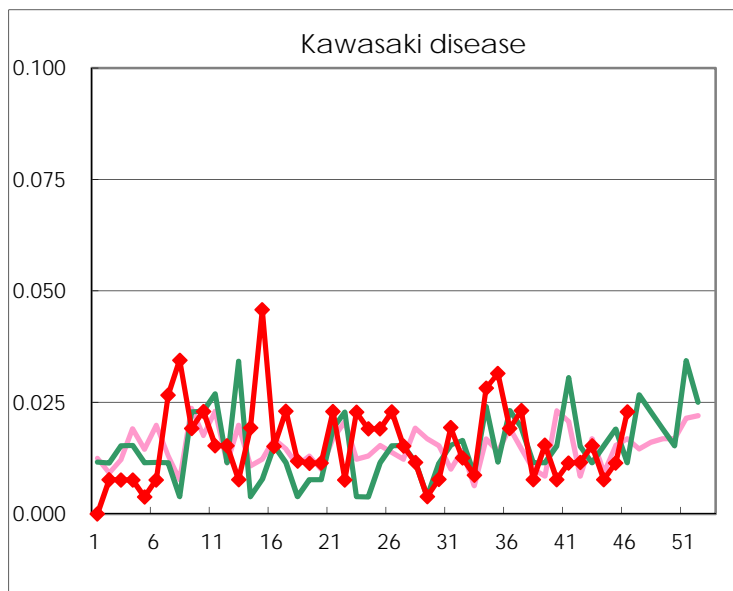
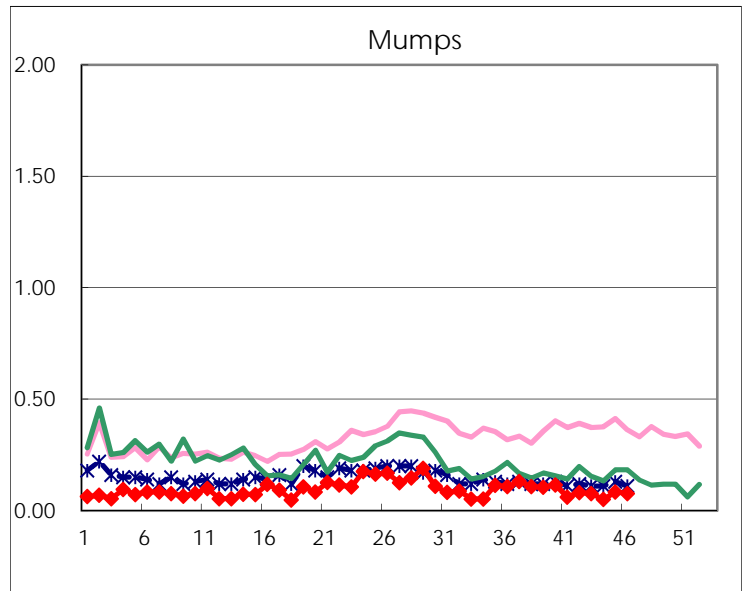
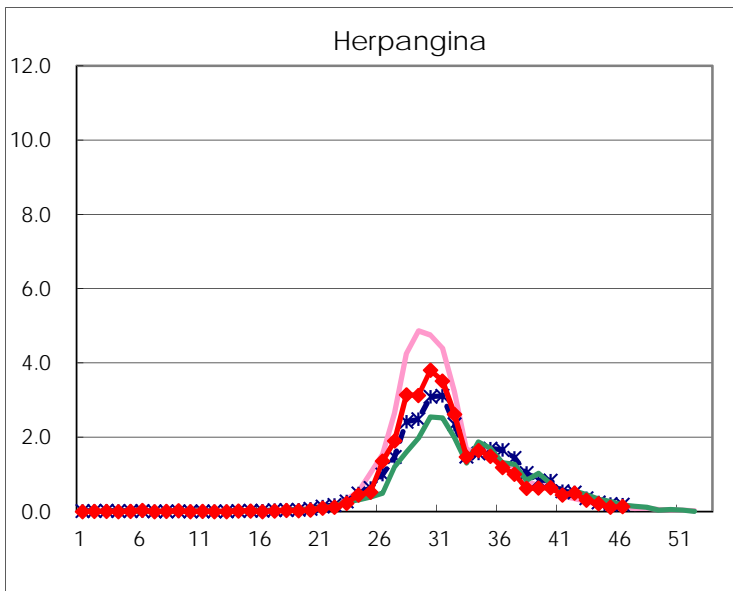
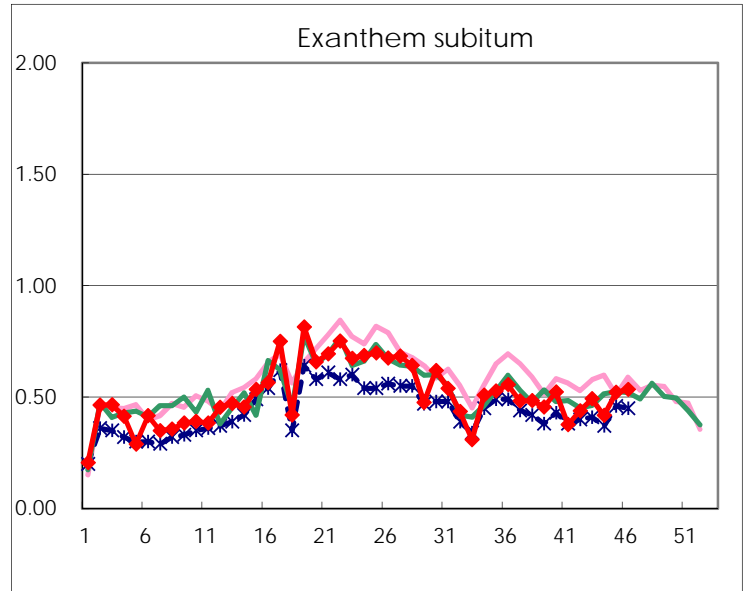
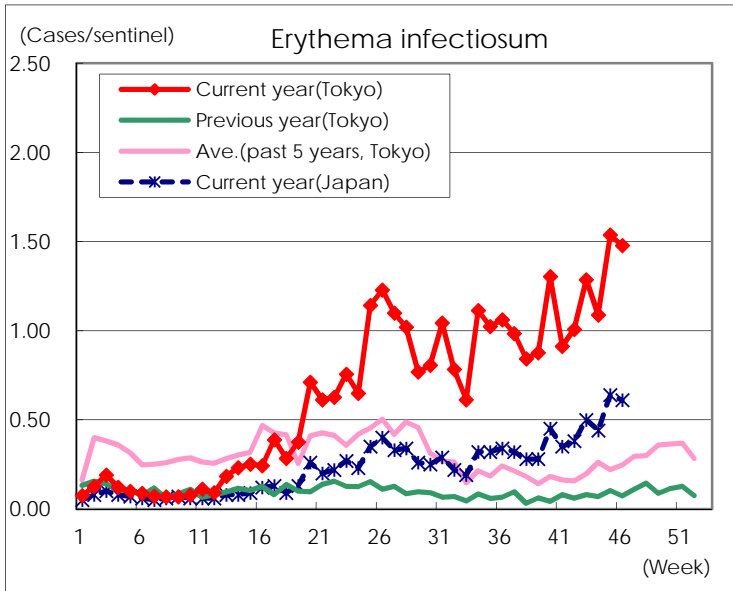
Number of patients with the diseases to be reported
by the designated clinics and hospitals

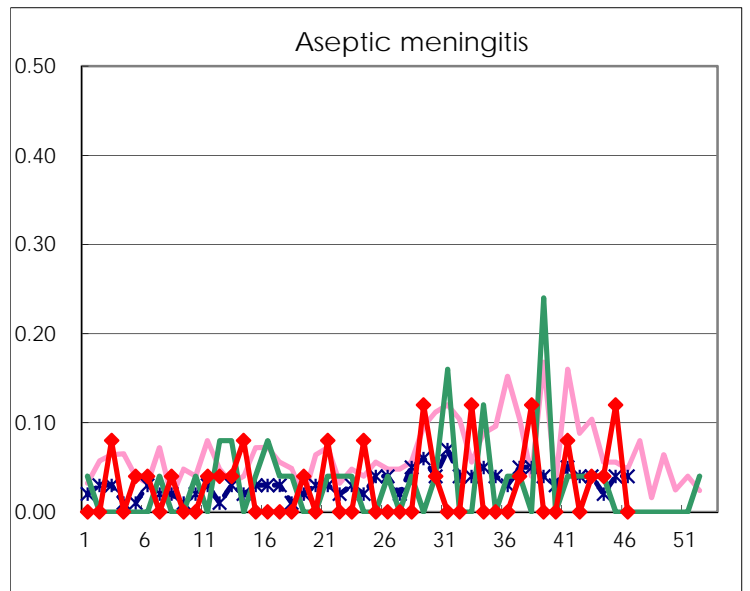
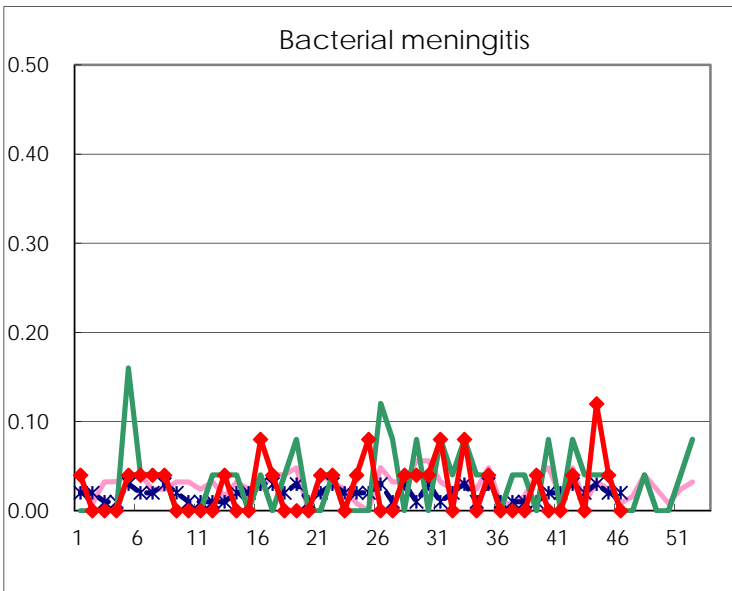
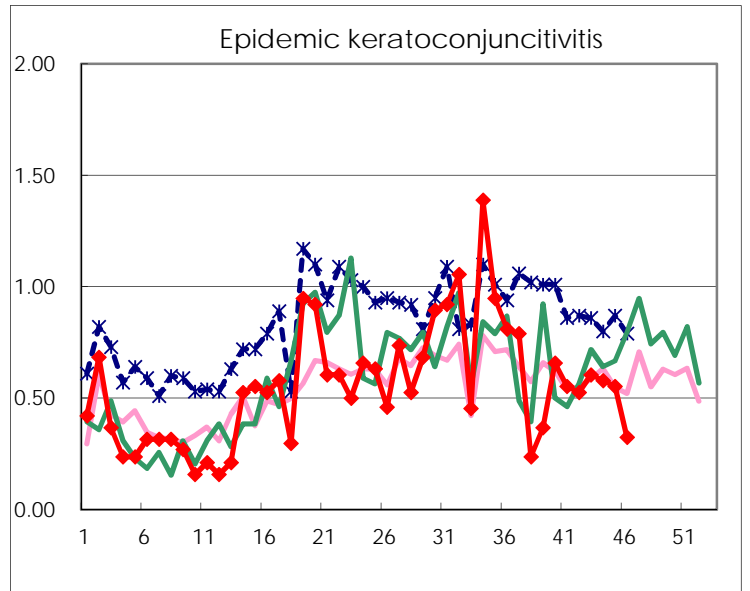
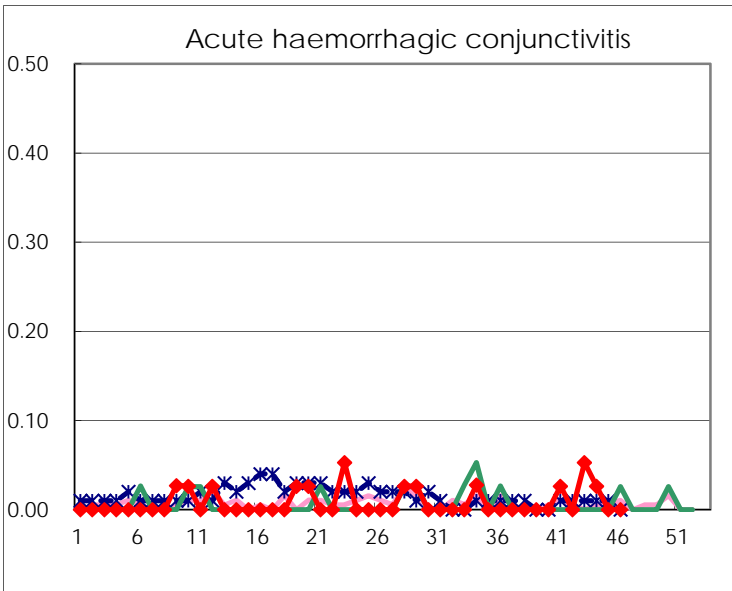
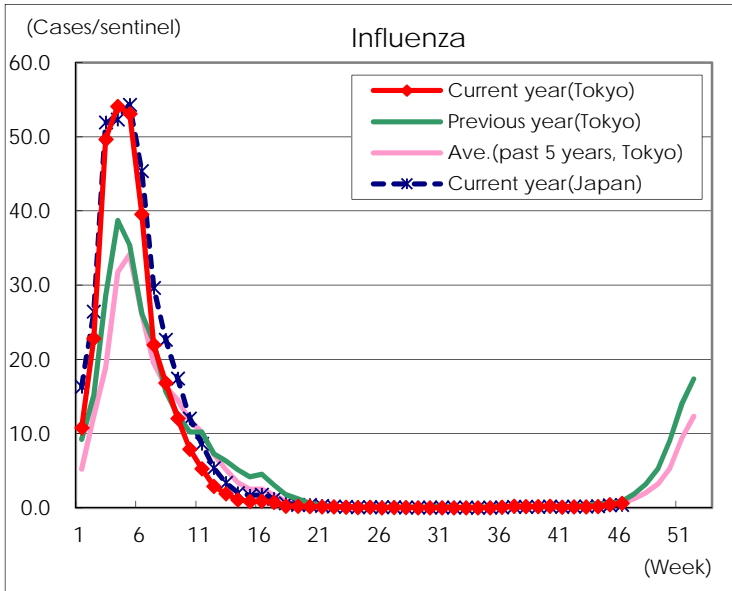
Diseases	Tokyo				
	43rd	44th	45th	46th	/sentinel
Respiratory syncytial virus infection	172	108	107	85	0.32
Pharyngoconjunctival fever	48	53	60	99	0.38
Group A streptococcal pharyngitis	602	593	700	713	2.72
Infectious gastroenteritis	1,338	1,339	1,791	2,058	7.85
Chickenpox	57	89	121	89	0.34
Hand, foot, and mouth disease	372	342	301	374	1.43
Erythema infectiosum	337	284	404	387	1.48
Exanthem subitum	129	109	137	140	0.53
Herpangina	81	56	31	36	0.14
Mumps	20	13	22	20	0.08
Kawasaki disease	4	2	3	6	0.02
Cold with exanthems	38	33	30	17	0.06
Influenza	67	83	186	251	0.60
Acute hemorrhagic conjunctivitis	2	1			
Epidemic keratoconjunctivitis	23	22	21	12	0.32
Bacterial meningitis		3	1		
Aseptic meningitis	1	1	3		
<i>Mycoplasma pneumoniae</i>	16	12	12	13	0.52
Chlamydial pneumonia (excluding psittacosis)				1	0.04
Infectious gastroenteritis (only by Rotavirus)				1	0.04
Influenza-Associated Hospitalizations	1		1	1	0.04

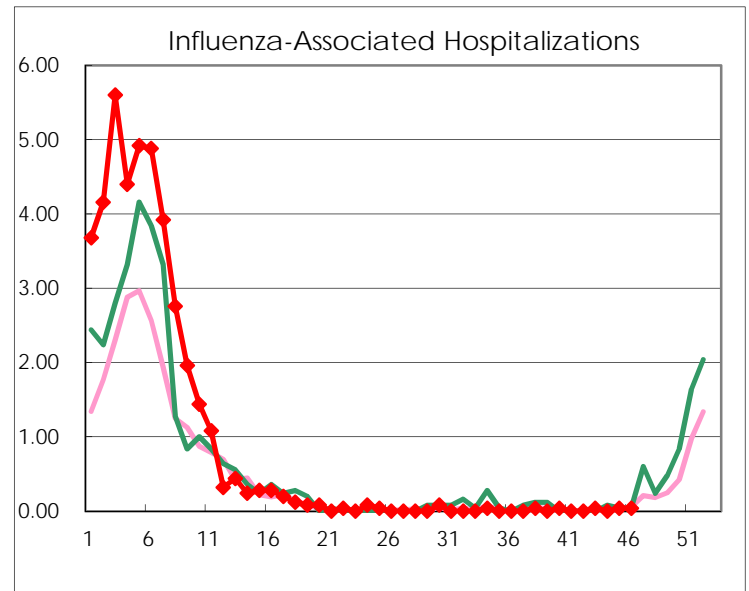
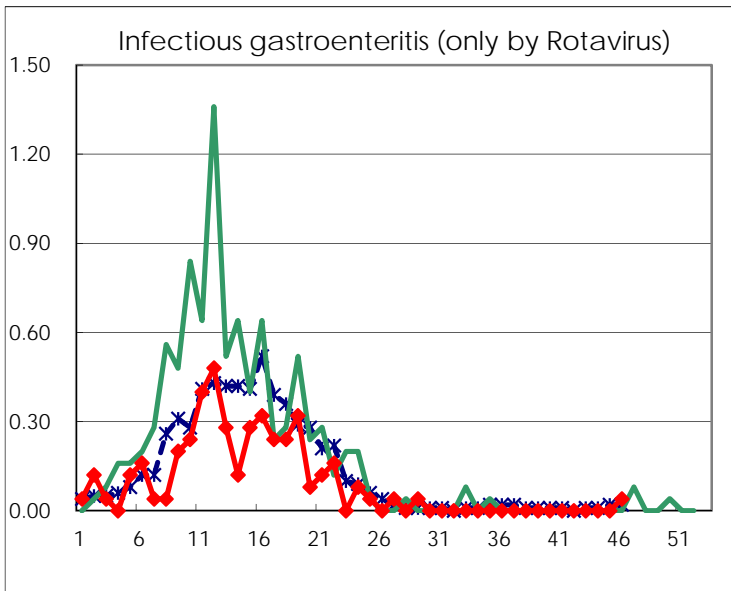
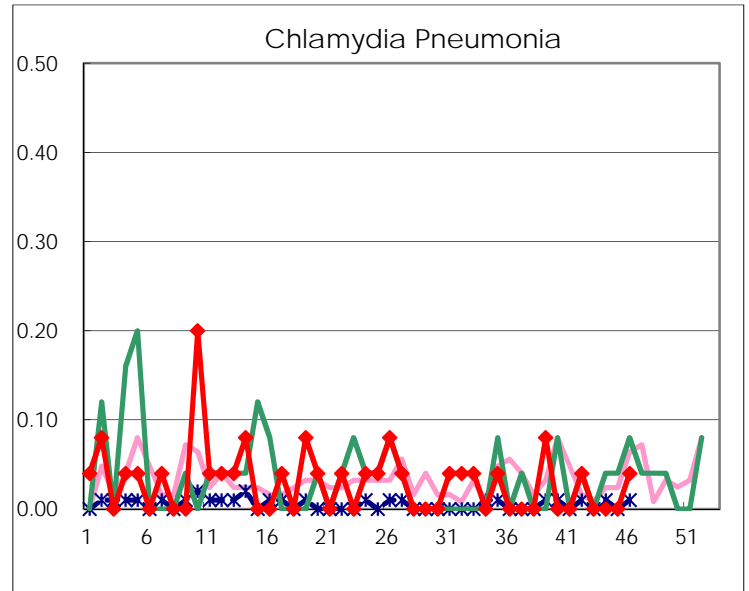
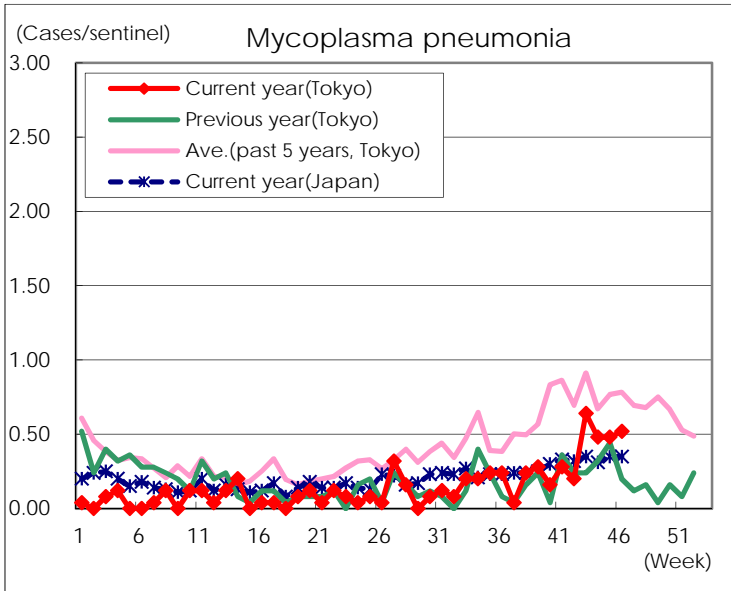
(Blank means 0.)

Disease Trend Graph (weekly reported cases per sentinel in comparison)









Number of sentinel facilities for weekly reporting		
Types of sentinels	Number of sentinels	Sentinels having reported
Pediatric	264	262
Influenza	419	415
Ophthalmic	39	37
Specially-designated	25	25