

## 29 November 2018 / Number 47

### Surveillance System in Tokyo, Japan

The infectious diseases which all physicians must report

All physicians must report to health centers the incidence of the diseases which are shown at page one. Health centers electronically report the individual cases to Tokyo Metropolitan Infectious Disease Surveillance Center.

The infectious diseases required to be reported by the sentinels

The numbers of patients who visit the sentinel clinics or hospitals during a week are reported to health centers in Tokyo. And they electronically report the numbers to Tokyo Metropolitan Infectious Disease Surveillance Center. We have about 500 sentinel clinics and hospitals in Tokyo.

Tokyo Metropolitan Institute of Public Health

TEL:81-3-3363-3213 FAX:81-3-5332-7365

e-mail:[www@tokyo-eiken.go.jp](mailto:www@tokyo-eiken.go.jp)

URL:[idsc.tokyo-eiken.go.jp/](http://idsc.tokyo-eiken.go.jp/)

---

Number of patients with the diseases which all physicians must report

Category	Diseases	Tokyo					Japan	
		44th	45th	46th	47th	Cum 2018	47th	Cum 2018
I	Ebola hemorrhagic fever							
	Crimean-Congo hemorrhagic fever							
	Smallpox							
	South American hemorrhagic fever							
	Plague							
	Marburg disease							
	Lassa fever							
II	Acute poliomyelitis							
	Tuberculosis	58	95	62	47	2,990	269	19,552
	Diphtheria							
	Severe Acute Respiratory Syndrome(SARS)							
	Middle East Respiratory Syndrome (MERS)							
	Avian influenza H5N1							
	Avian influenza H7N9							
III	Cholera							4
	Shigellosis	6	1		2	77	3	226
	Enterohemorrhagic Escherichia coli infection	12	5	3	5	446	23	3,709
	Typhoid fever					11		34
	Paratyphoid fever			1		8		21
IV	Hepatitis E	4	5	2	4	95	8	407
	West Nile fever							
	Hepatitis A	7	5	7	2	404	6	880
	Echinococcosis						1	12
	Yellow fever							
	Psittacosis					2		6
	Omsk hemorrhagic fever							
	Relapsing fever							6
	Kyasanur forest disease							
	Q fever					2		3
	Rabies							
	Coccidioidomycosis							2
	Monkeypox							
	Zika virus infection							
	Severe Fever with Thrombocytopenia Syndrome							74
	Hemorrhagic fever with renal syndrome							
	Western equine encephalitis							
	Tick-borne encephalitis							1
	Anthrax							
	Chikungunya fever							3
	Scrub typhus(Tsutsugamushi disease)	1	1			6	48	244
	Dengue fever	1	3		1	58	3	181
	Eastern equine encephalitis							
	Avian influenza (excluding H5N1 and H7N9)							
	Nipah virus infection							
	Japanese spotted fever						4	293
	Japanese encephalitis							
	Hantavirus pulmonary syndrome							
	Herpes B virus infection							
	Glanders							
	Brucellosis							3
	Venezuelan equine encephalitis							
	Hendra virus infection							
Epidemic typhus								
Botulism					1		2	
Malaria					13		47	
Tularemia								
Lyme disease					1		13	
Lyssavirus infection(excluding rabies)								
Rift valley fever								
Melioidosis					1		2	
Legionellosis	2	2	1		149	30	1,972	
Leptospirosis					5		30	
Rocky mountain spotted fever								

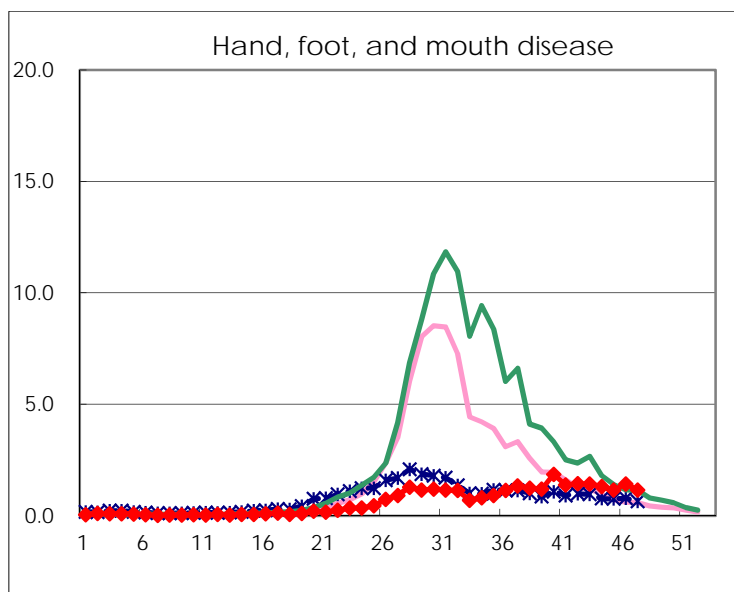
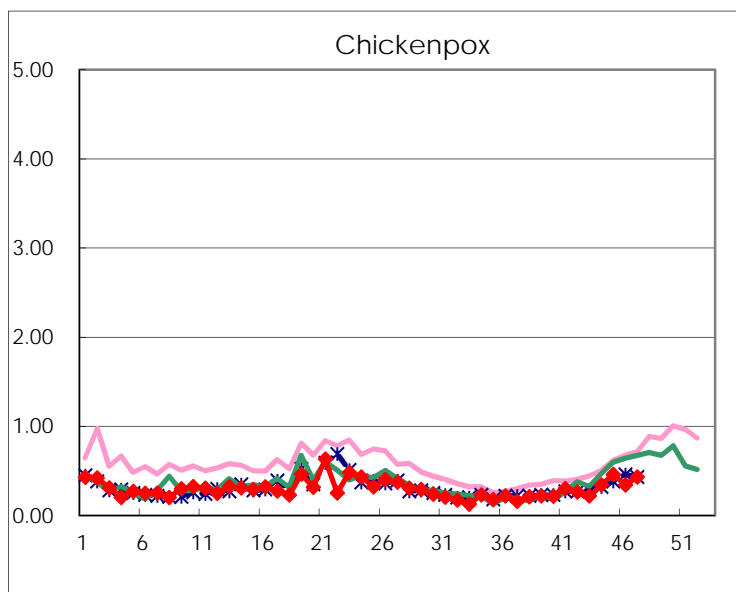
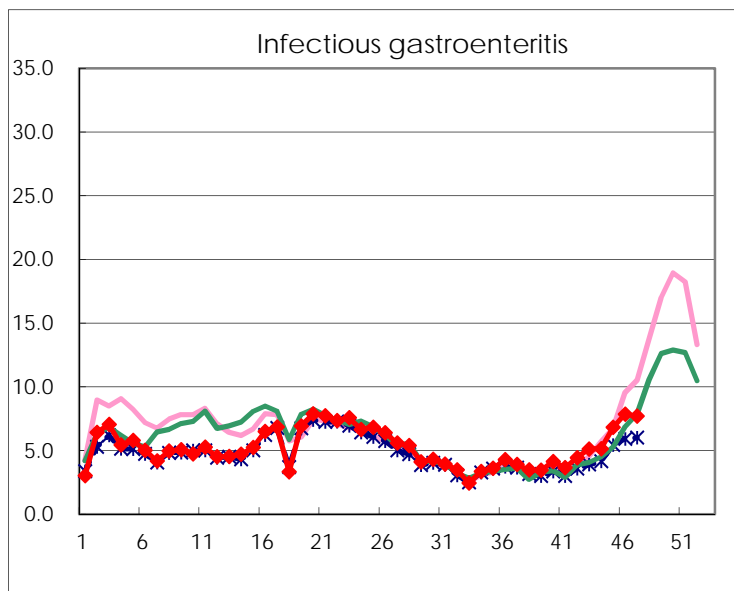
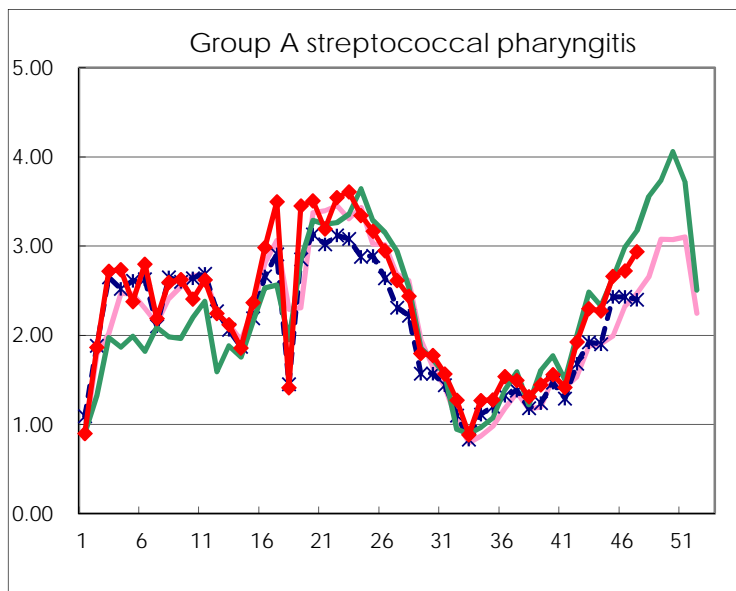
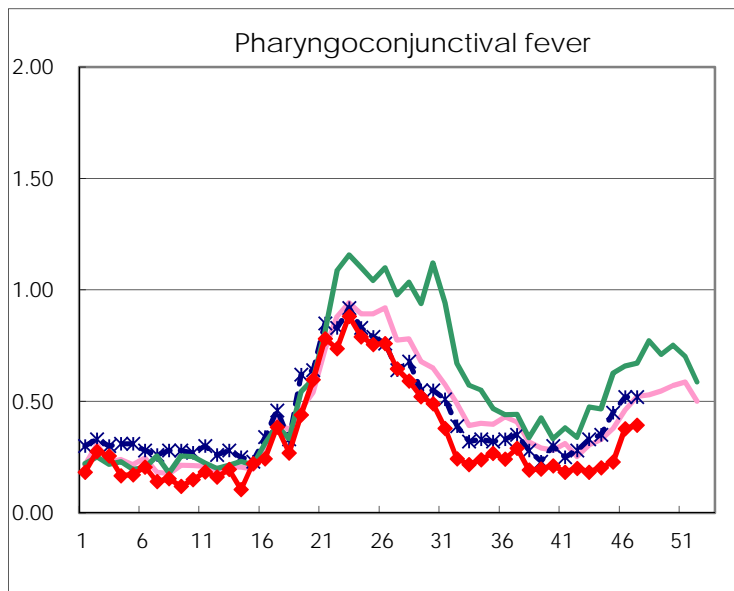
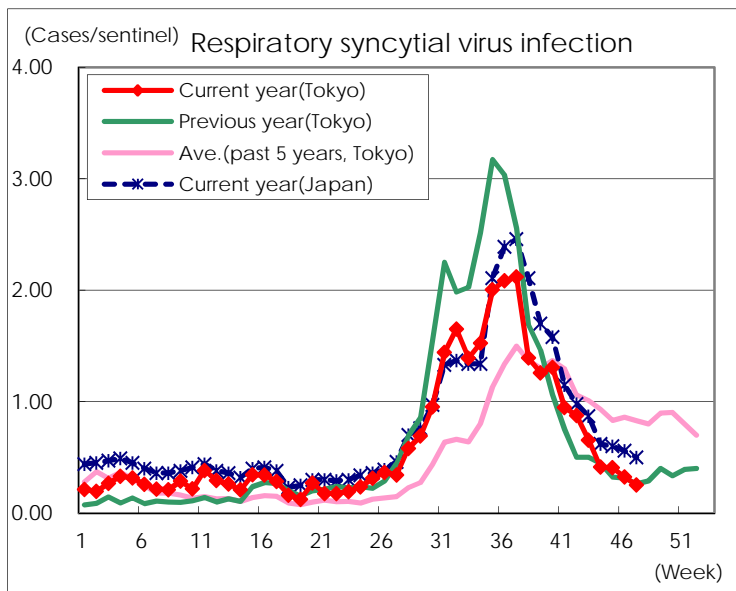
Category	Diseases	Tokyo					Japan	
		44th	45th	46th	47th	Cum 2018	47th	Cum 2018
V	Amebiasis	2		1	9	148	9	751
	Viral hepatitis(excluding hepatitis A and E)	2		1	3	59	6	227
	CRE infection	2	4	4	3	201	26	1,995
	Acute Flaccid Paralysis (excluding Acute poliomyelitis)	1				7	5	118
	Acute encephalitis(excluding JE and WNE)		1	3		56	3	584
	Cryptosporidiosis					3		24
	Creutzfeldt-Jakob disease	1	1			24	1	190
	Severe invasive streptococcal infections(TSLs)	1	2	1	1	81	5	618
	Acquired immunodeficiency syndrome (AIDS)	7	15	11	8	370	13	1,156
	Giardiasis			2		19		66
	Invasive <i>Haemophilus influenzae</i> disease	1			1	36	3	424
	Invasive meningococcal disease					6		32
	Invasive pneumococcal disease	6	4	14	10	344	36	2,874
	Varicella (limited to hospitalized case)	1	1	2		53	5	396
	Congenital rubella syndrome							
	Syphilis	36	34	40	30	1,586	77	6,221
	Disseminated cryptococcosis		1			17	3	162
	Tetanus				1	8	5	120
	Vancomycin-resistant <i>S. aureus</i> infection							
	Vancomycin-resistant <i>Enterococcus</i> infection				1	6	1	72
	Pertussis	125	92	85	88	2,009	277	9,942
Rubella	53	60	48	28	795	113	2,313	
Measles			1	1	19	8	263	
MDRA infection					4	1	21	

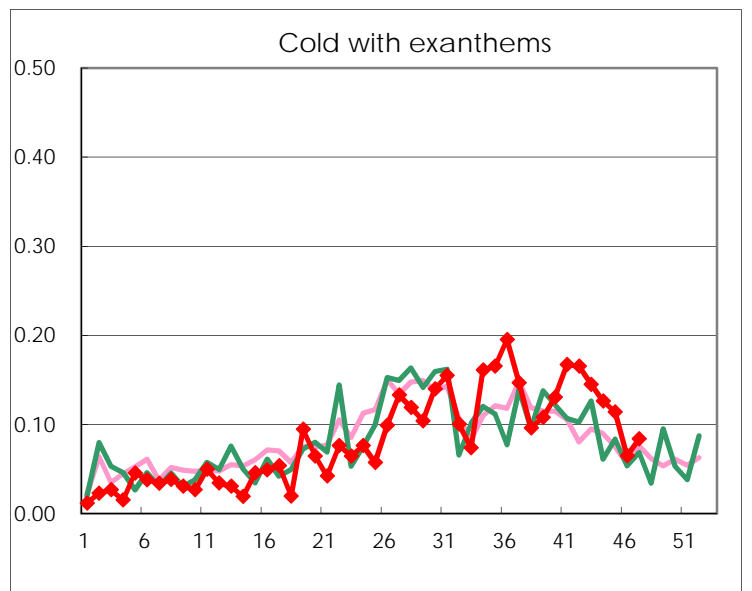
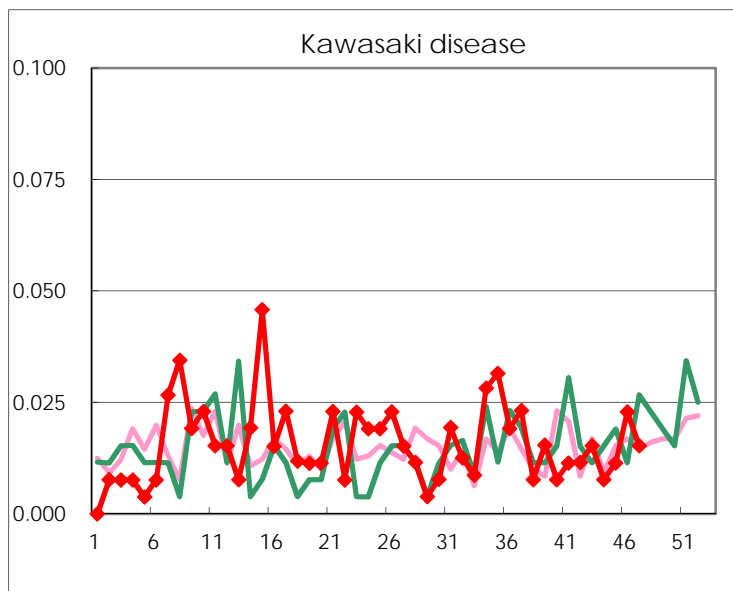
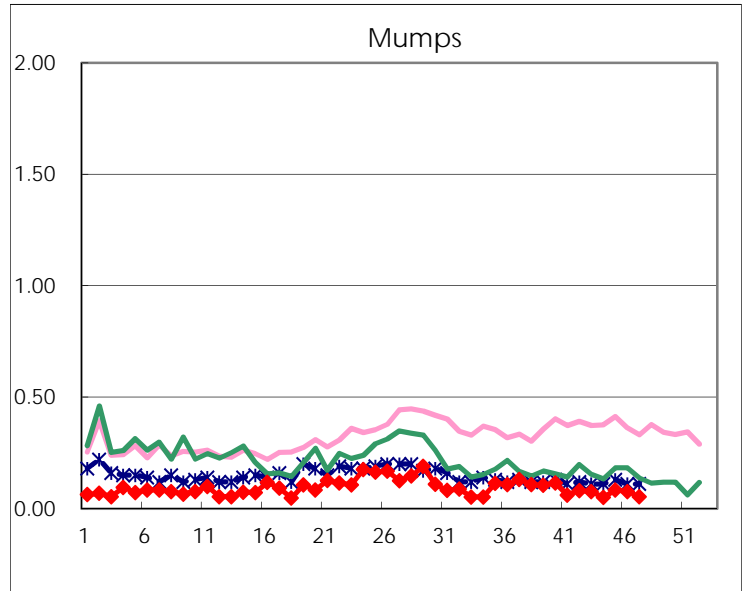
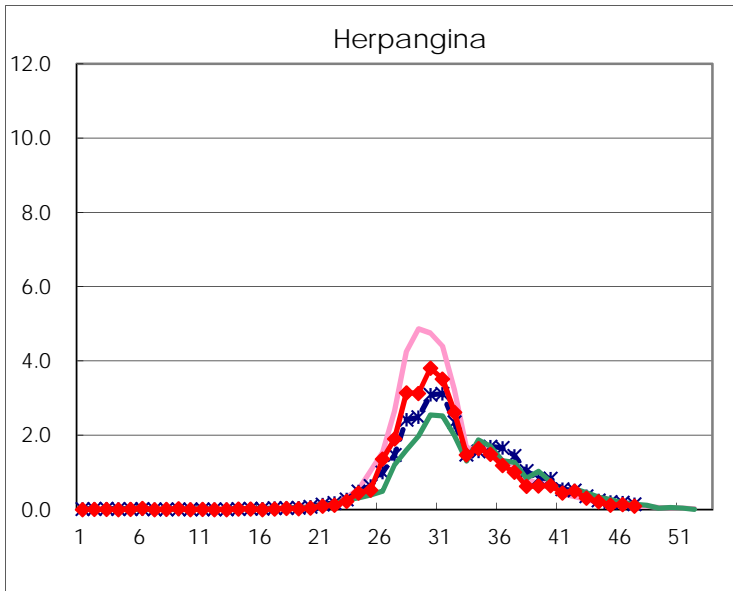
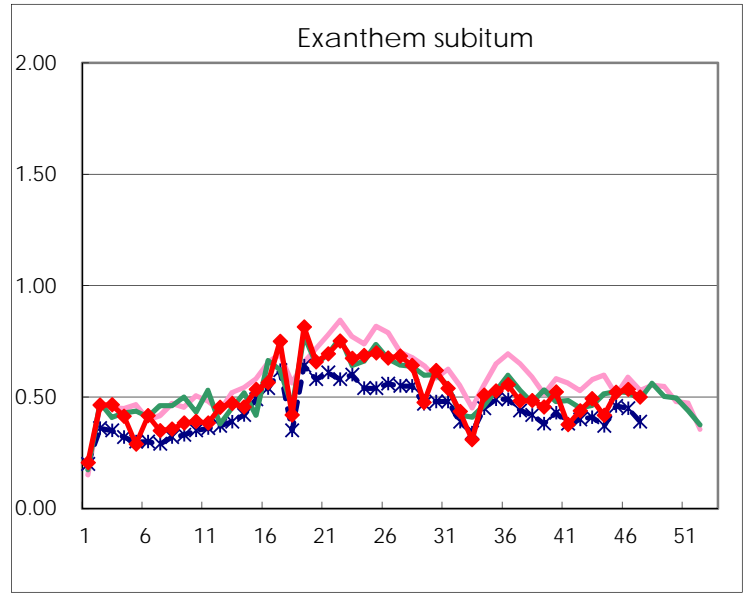
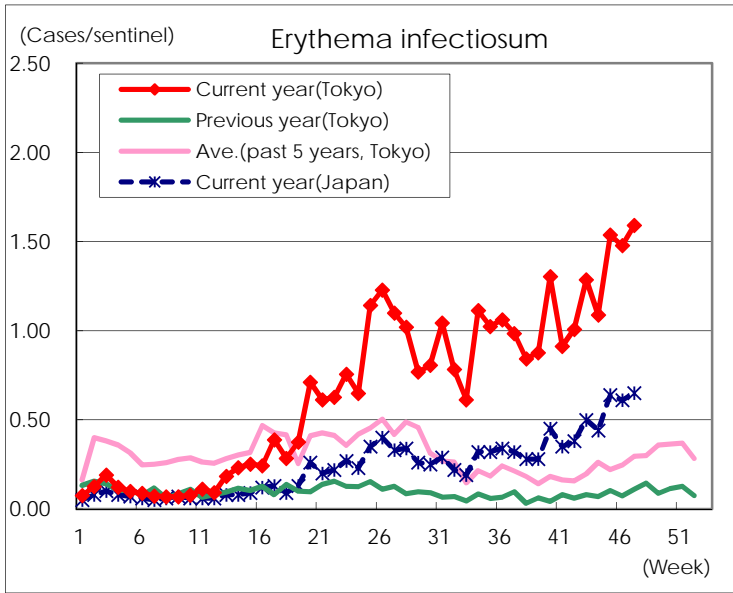
Number of patients with the diseases to be reported  
by the designated clinics and hospitals

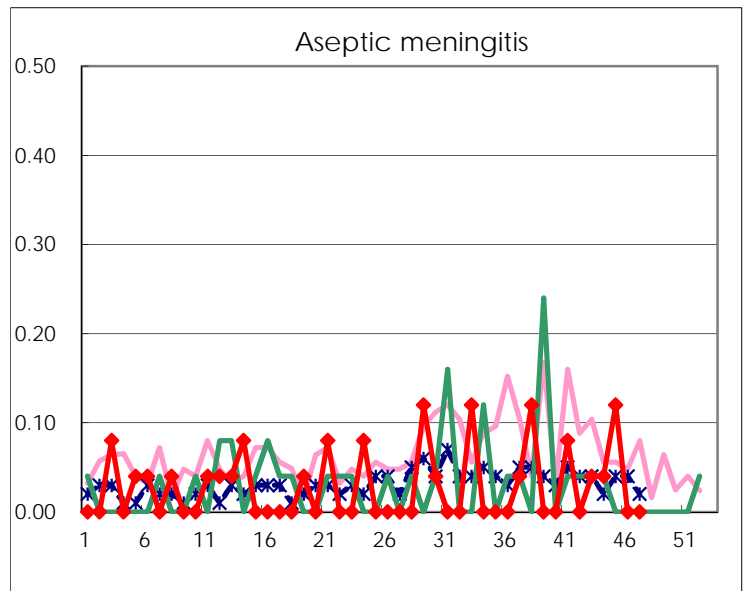
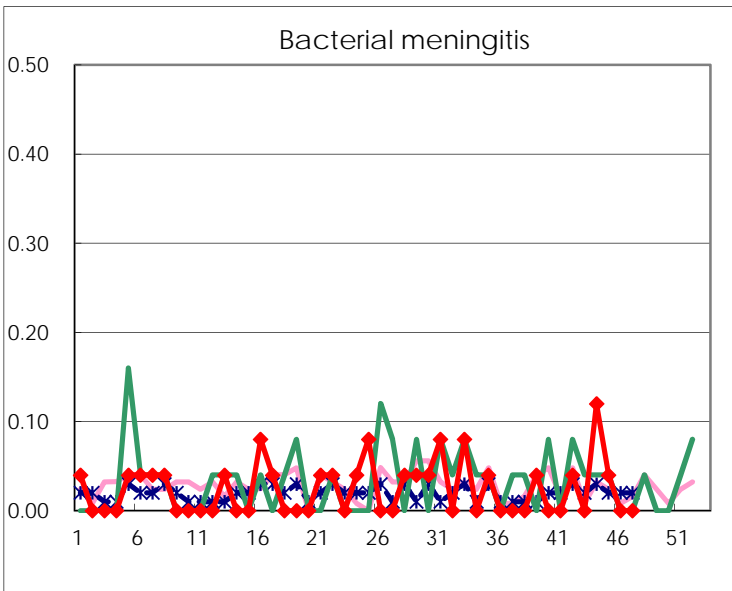
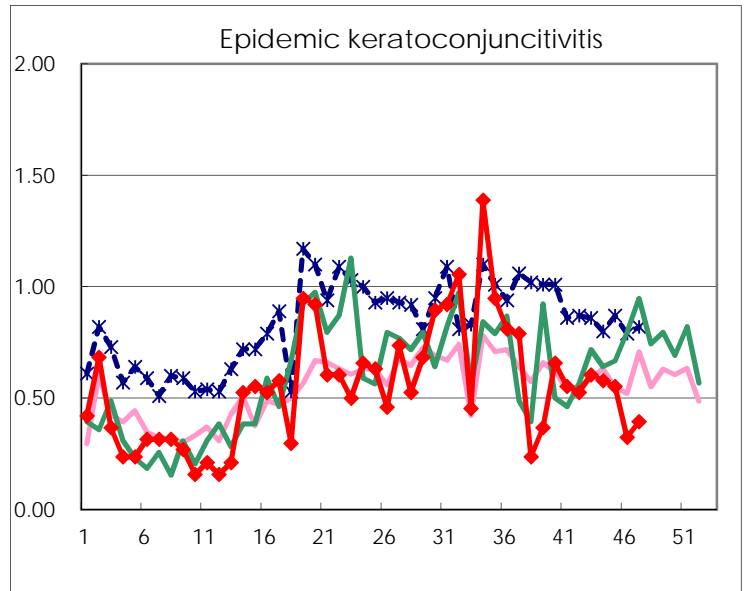
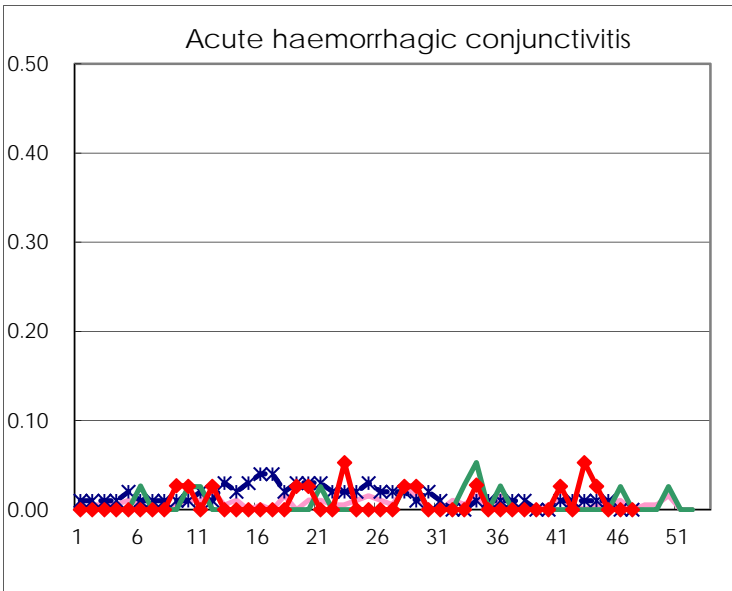
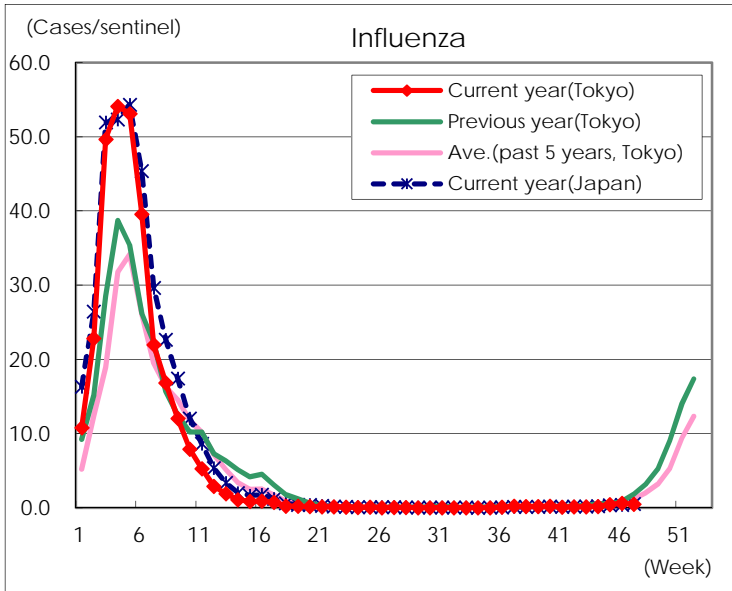
Diseases	Tokyo				
	44th	45th	46th	47th	/sentinel
Respiratory syncytial virus infection	108	107	85	66	0.25
Pharyngoconjunctival fever	53	60	99	103	0.39
Group A streptococcal pharyngitis	593	700	713	770	2.94
Infectious gastroenteritis	1,339	1,791	2,058	2,013	7.68
Chickenpox	89	121	89	113	0.43
Hand, foot, and mouth disease	342	301	374	303	1.16
Erythema infectiosum	284	404	387	417	1.59
Exanthem subitum	109	137	140	131	0.50
Herpangina	56	31	36	25	0.10
Mumps	13	22	20	14	0.05
Kawasaki disease	2	3	6	4	0.02
Cold with exanthems	33	30	17	22	0.08
Influenza	83	186	251	208	0.50
Acute hemorrhagic conjunctivitis	1				
Epidemic keratoconjunctivitis	22	21	12	15	0.39
Bacterial meningitis	3	1			
Aseptic meningitis	1	3			
<i>Mycoplasma pneumoniae</i>	12	12	13	10	0.40
Chlamydial pneumonia (excluding psittacosis)			1		
Infectious gastroenteritis (only by Rotavirus)			1	1	0.04
Influenza-Associated Hospitalizations		1	1		

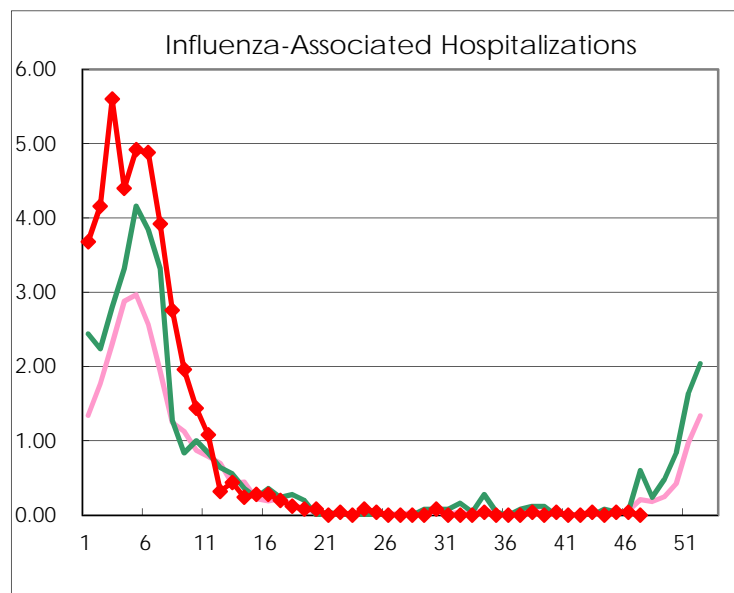
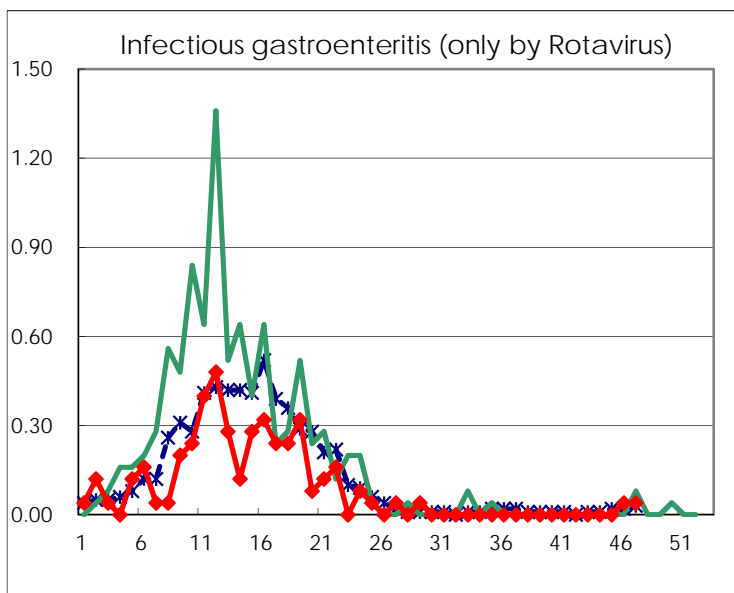
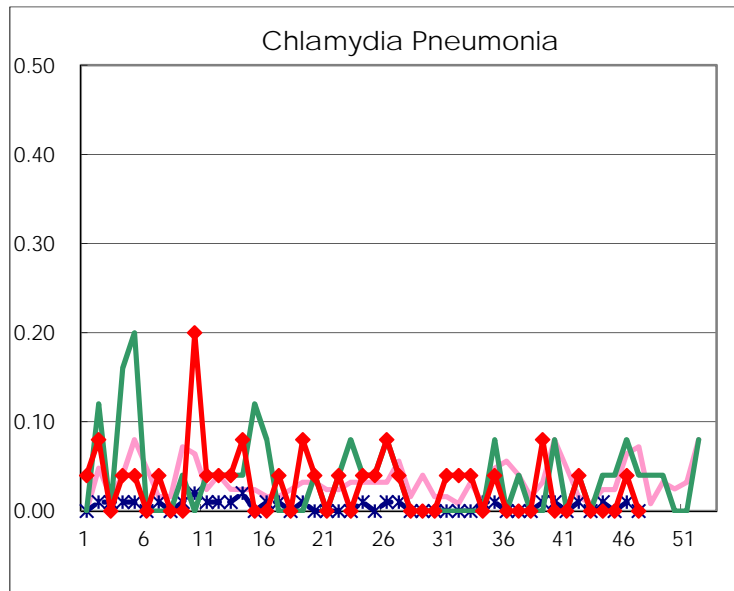
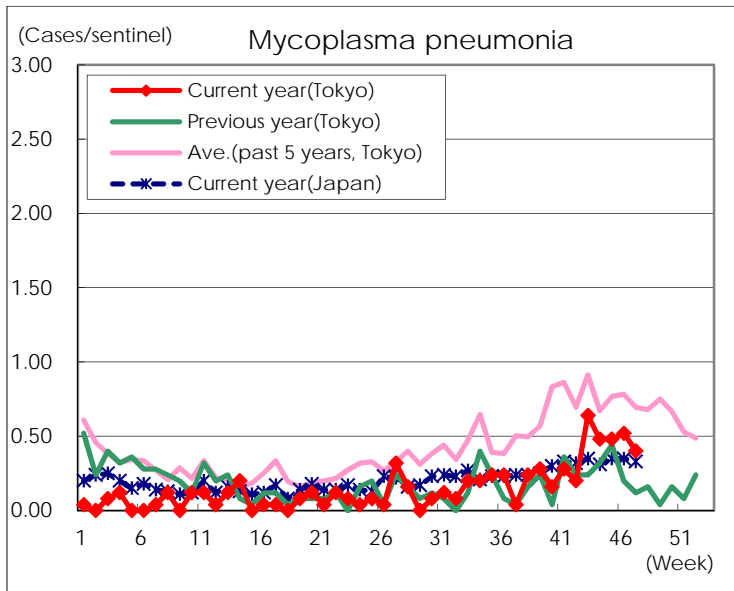
( Blank means 0. )

# Disease Trend Graph (weekly reported cases per sentinel in comparison)









Number of sentinel facilities for weekly reporting		
Types of sentinels	Number of sentinels	Sentinels having reported
Pediatric	264	262
Influenza	419	417
Ophthalmic	39	38
Specially-designated	25	25