

13 December 2018 / Number 49

Surveillance System in Tokyo, Japan

The infectious diseases which all physicians must report

All physicians must report to health centers the incidence of the diseases which are shown at page one. Health centers electronically report the individual cases to Tokyo Metropolitan Infectious Disease Surveillance Center.

The infectious diseases required to be reported by the sentinels

The numbers of patients who visit the sentinel clinics or hospitals during a week are reported to health centers in Tokyo. And they electronically report the numbers to Tokyo Metropolitan Infectious Disease Surveillance Center. We have about 500 sentinel clinics and hospitals in Tokyo.

Tokyo Metropolitan Institute of Public Health

TEL:81-3-3363-3213 FAX:81-3-5332-7365

e-mail:www@tokyo-eiken.go.jp

URL:idsc.tokyo-eiken.go.jp/

Number of patients with the diseases which all physicians must report

Category	Diseases	Tokyo					Japan	
		46th	47th	48th	49th	Cum 2018	49th	Cum 2018
I	Ebola hemorrhagic fever							
	Crimean-Congo hemorrhagic fever							
	Smallpox							
	South American hemorrhagic fever							
	Plague							
	Marburg disease							
	Lassa fever							
II	Acute poliomyelitis							
	Tuberculosis	66	55	59	55	3,116	343	20,427
	Diphtheria							
	Severe Acute Respiratory Syndrome(SARS)							
	Middle East Respiratory Syndrome (MERS)							
	Avian influenza H5N1							
	Avian influenza H7N9							
III	Cholera							4
	Shigellosis		2	4	17	98	21	253
	Enterohemorrhagic Escherichia coli infection	3	5	10	1	457	22	3,768
	Typhoid fever					11		34
	Paratyphoid fever	1		1		9		22
IV	Hepatitis E	2	4	2		97	2	418
	West Nile fever							
	Hepatitis A	7	2	5	4	413	6	898
	Echinococcosis							12
	Yellow fever							
	Psittacosis					2		6
	Omsk hemorrhagic fever							
	Relapsing fever							6
	Kyasanur forest disease							
	Q fever					2		3
	Rabies							
	Coccidioidomycosis							2
	Monkeypox							
	Zika virus infection							
	Severe Fever with Thrombocytopenia Syndrome						1	76
	Hemorrhagic fever with renal syndrome							
	Western equine encephalitis							
	Tick-borne encephalitis							1
	Anthrax							
	Chikungunya fever							3
	Scrub typhus(Tsutsugamushi disease)			1	1	8	41	354
	Dengue fever		1	1	1	60	3	191
	Eastern equine encephalitis							
	Avian influenza (excluding H5N1 and H7N9)							
	Nipah virus infection							
	Japanese spotted fever						1	297
	Japanese encephalitis							
	Hantavirus pulmonary syndrome							
	Herpes B virus infection							
	Glanders							
	Brucellosis							3
	Venezuelan equine encephalitis							
	Hendra virus infection							
	Epidemic typhus							
	Botulism					1		2
Malaria					13		47	
Tularemia								
Lyme disease					1		13	
Lyssavirus infection(excluding rabies)								
Rift valley fever								
Melioidosis					1		2	
Legionellosis	1		3		152	21	2,034	
Leptospirosis					5		30	
Rocky mountain spotted fever								

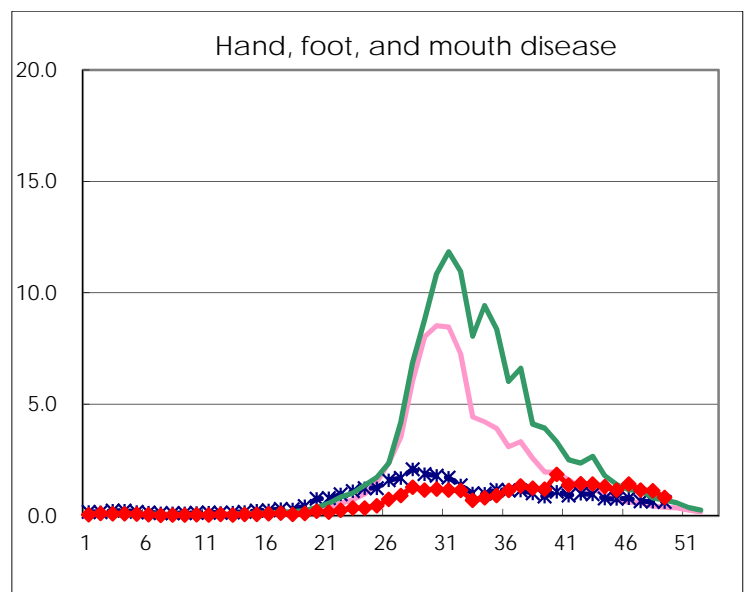
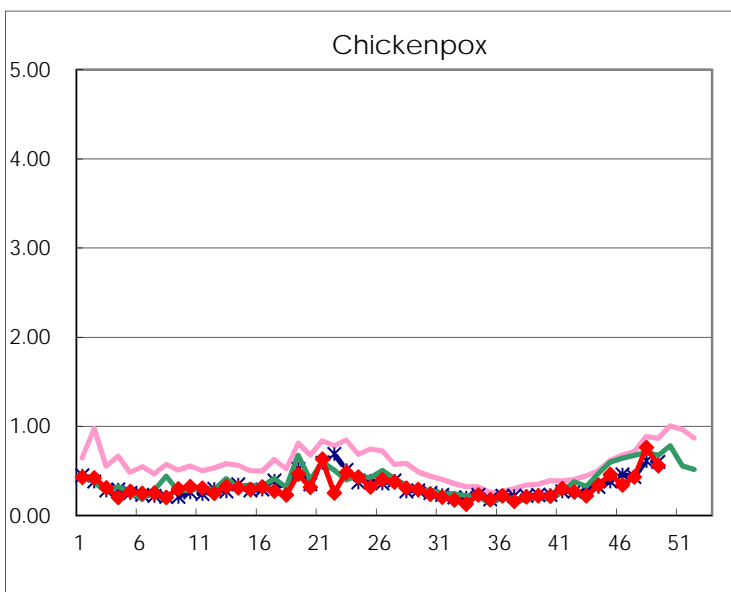
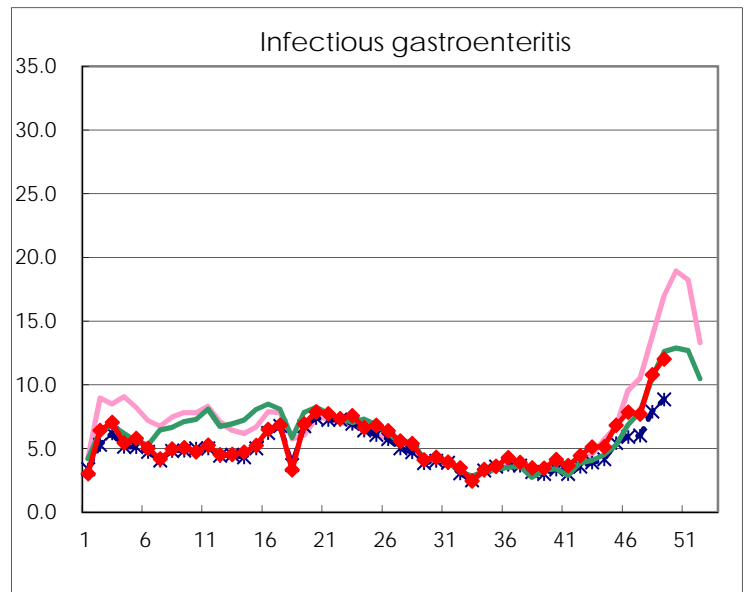
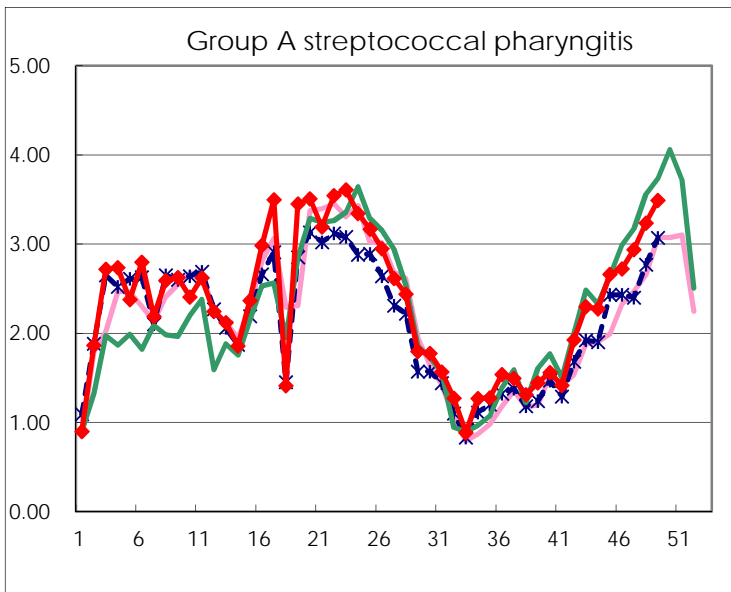
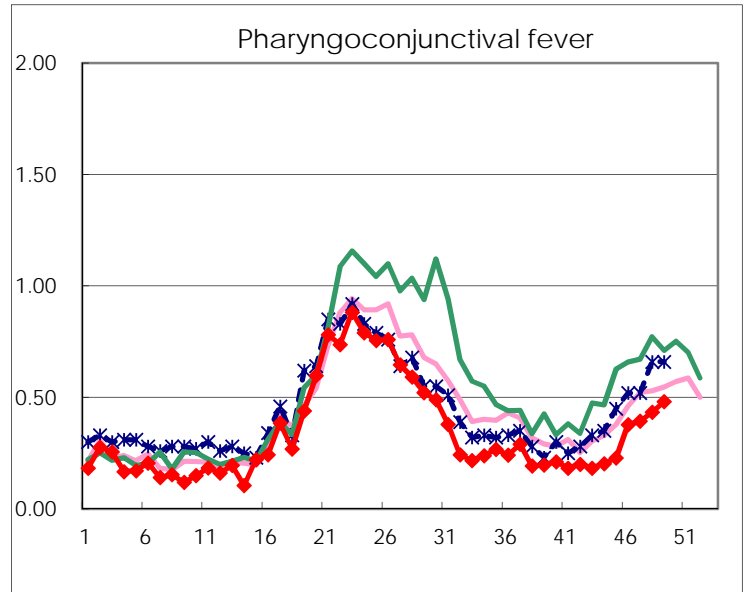
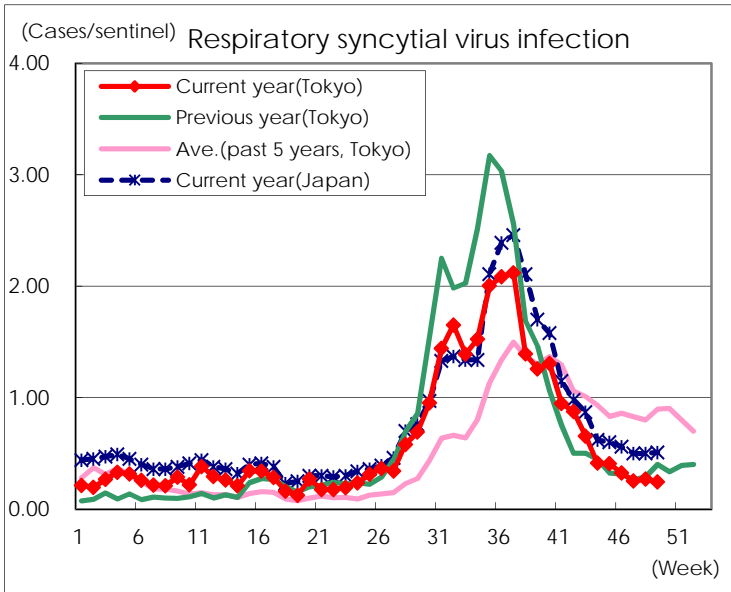
Category	Diseases	Tokyo					Japan	
		46th	47th	48th	49th	Cum 2018	49th	Cum 2018
V	Amebiasis	1	9	2		150	14	780
	Viral hepatitis(excluding hepatitis A and E)	1	3	1	4	64	5	244
	CRE infection	5	4	3	7	214	32	2,099
	Acute Flaccid Paralysis (excluding Acute poliomyelitis)					7	3	128
	Acute encephalitis(excluding JE and WNE)	3		2	1	59	8	605
	Cryptosporidiosis					3		24
	Creutzfeldt-Jakob disease				1	25	4	200
	Severe invasive streptococcal infections(TSLs)	1	1	1	1	83	10	640
	Acquired immunodeficiency syndrome (AIDS)	11	8	9	9	388	11	1,198
	Giardiasis	2				19		66
	Invasive <i>Haemophilus influenzae</i> disease		1	1	1	38	9	447
	Invasive meningococcal disease					6		32
	Invasive pneumococcal disease	14	10	13	12	369	69	3,057
	Varicella (limited to hospitalized case)	2		1		54	8	420
	Congenital rubella syndrome							
	Syphilis	40	31	36	40	1,664	79	6,505
	Disseminated cryptococcosis			1		18		167
	Tetanus		1			8	1	122
	Vancomycin-resistant <i>S. aureus</i> infection							
	Vancomycin-resistant <i>Enterococcus</i> infection		1			6	1	73
	Pertussis	85	89	89	103	2,203	320	10,782
Rubella	49	32	38	28	865	121	2,586	
Measles	1	1		1	20	10	274	
MDRA infection					4		23	

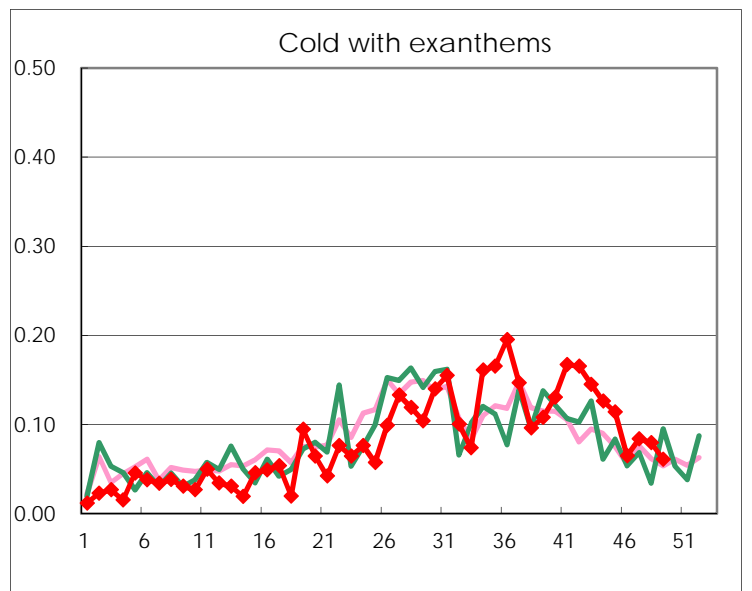
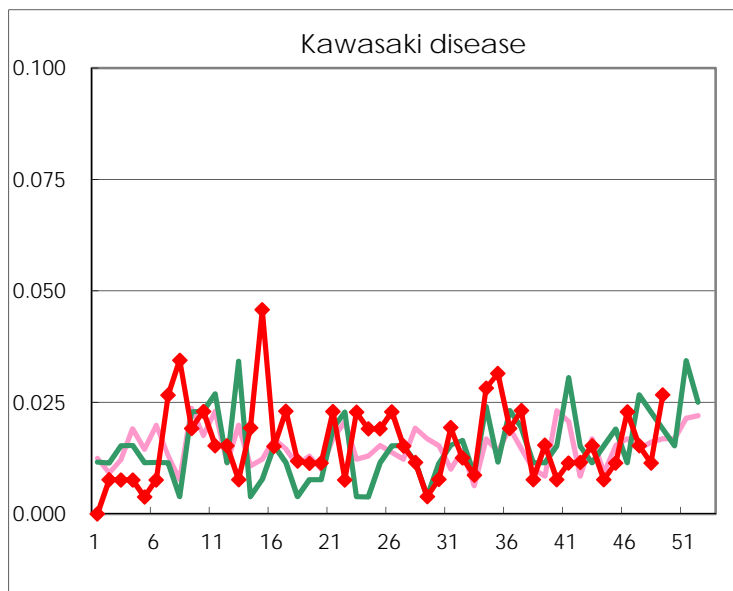
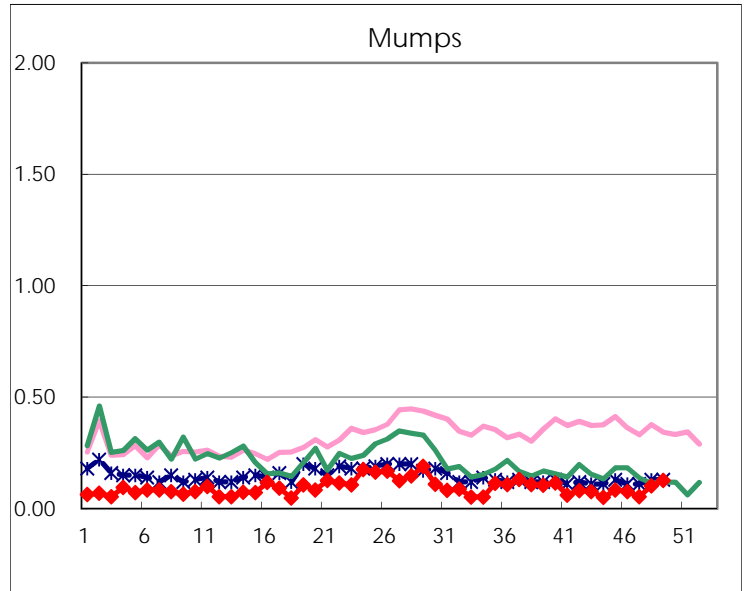
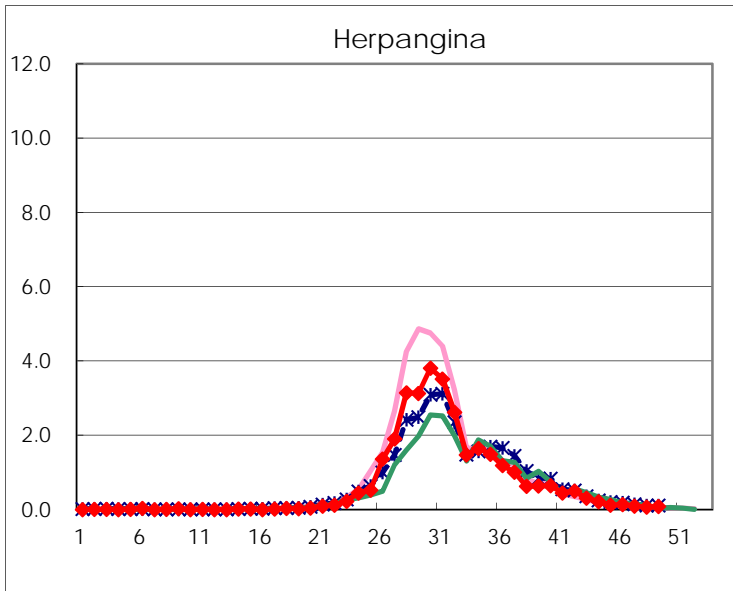
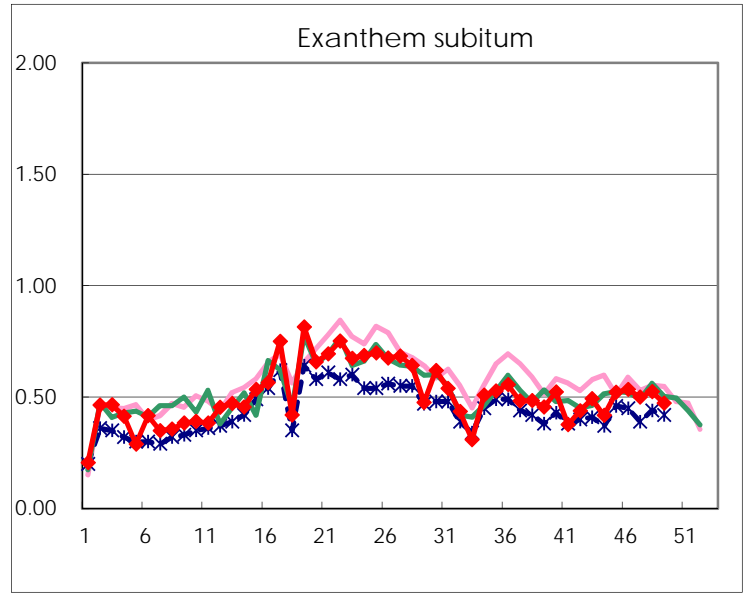
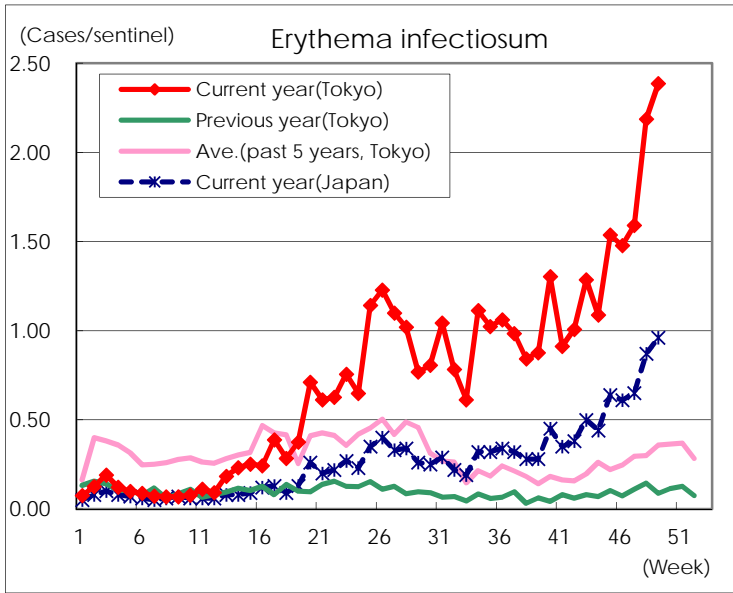
Number of patients with the diseases to be reported
by the designated clinics and hospitals

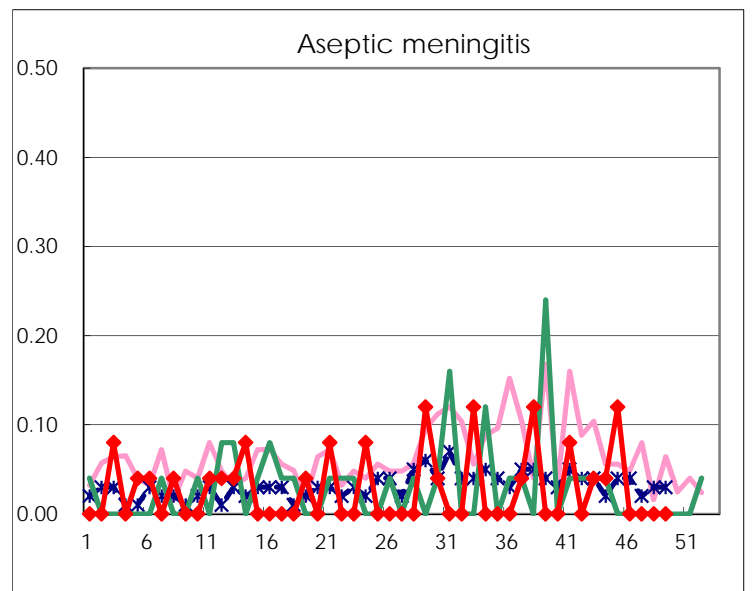
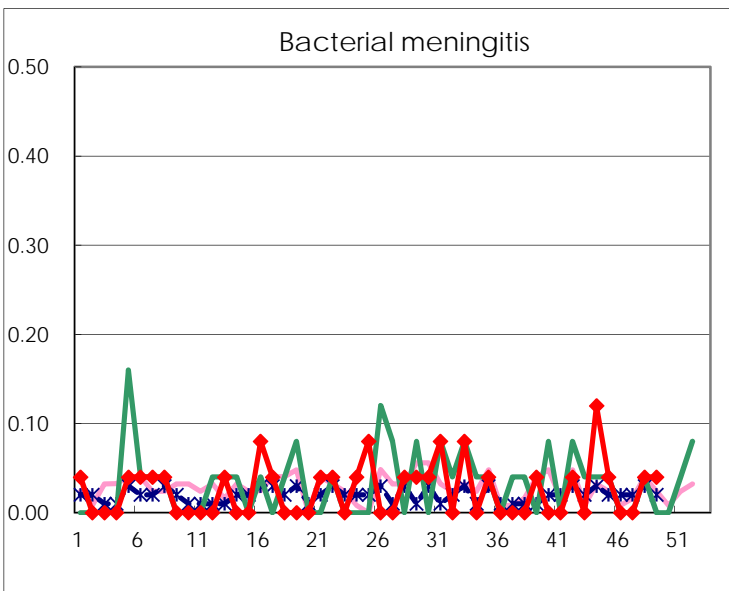
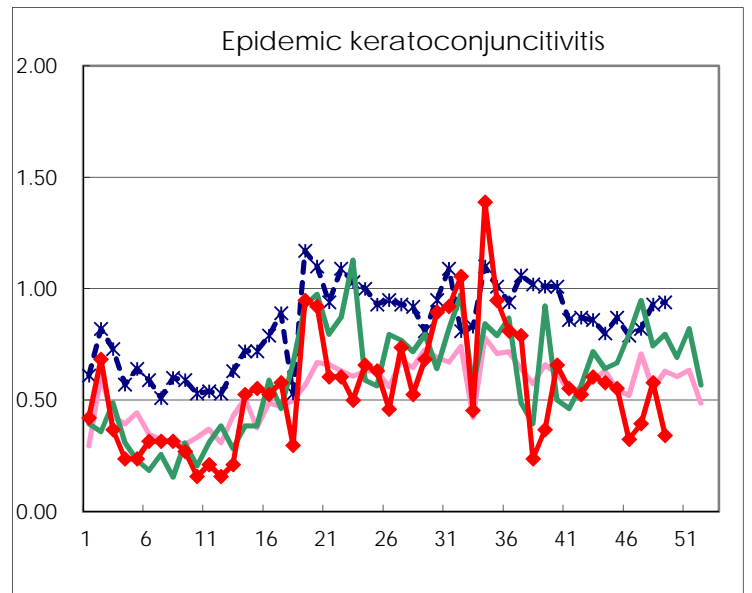
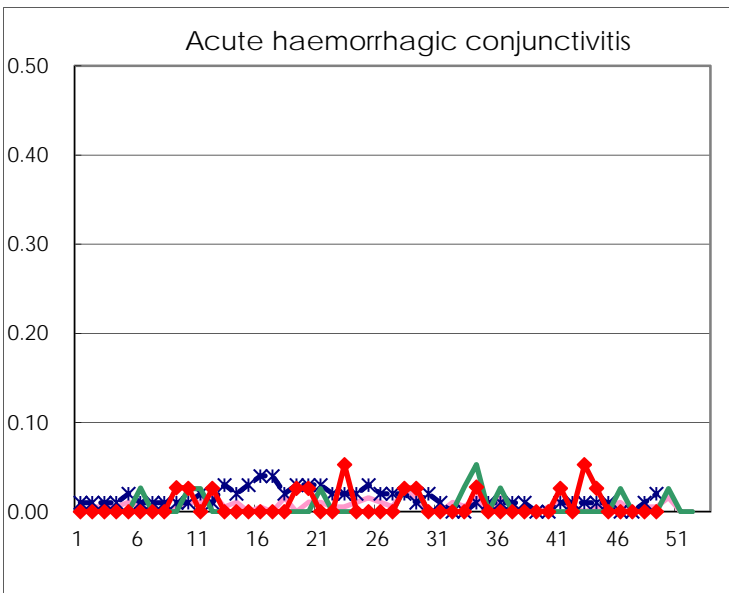
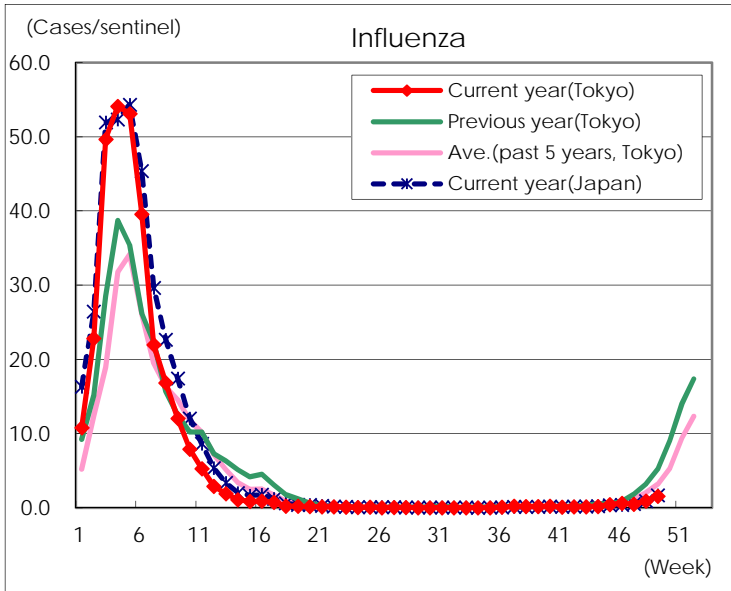
Diseases	Tokyo				
	46th	47th	48th	49th	/sentinel
Respiratory syncytial virus infection	85	66	71	64	0.24
Pharyngoconjunctival fever	99	103	114	126	0.48
Group A streptococcal pharyngitis	713	770	851	914	3.49
Infectious gastroenteritis	2,058	2,013	2,838	3,151	12.03
Chickenpox	89	113	200	146	0.56
Hand, foot, and mouth disease	374	303	296	214	0.82
Erythema infectiosum	387	417	575	625	2.39
Exanthem subitum	140	131	138	124	0.47
Herpangina	36	25	18	22	0.08
Mumps	20	14	27	33	0.13
Kawasaki disease	6	4	3	7	0.03
Cold with exanthems	17	22	21	16	0.06
Influenza	251	208	392	654	1.57
Acute hemorrhagic conjunctivitis					
Epidemic keratoconjunctivitis	12	15	22	13	0.34
Bacterial meningitis			1	1	0.04
Aseptic meningitis					
<i>Mycoplasma pneumoniae</i>	13	10	17	8	0.32
Chlamydial pneumonia (excluding psittacosis)	1		3		
Infectious gastroenteritis (only by Rotavirus)	1	1			
Influenza-Associated Hospitalizations	1		15	3	0.12

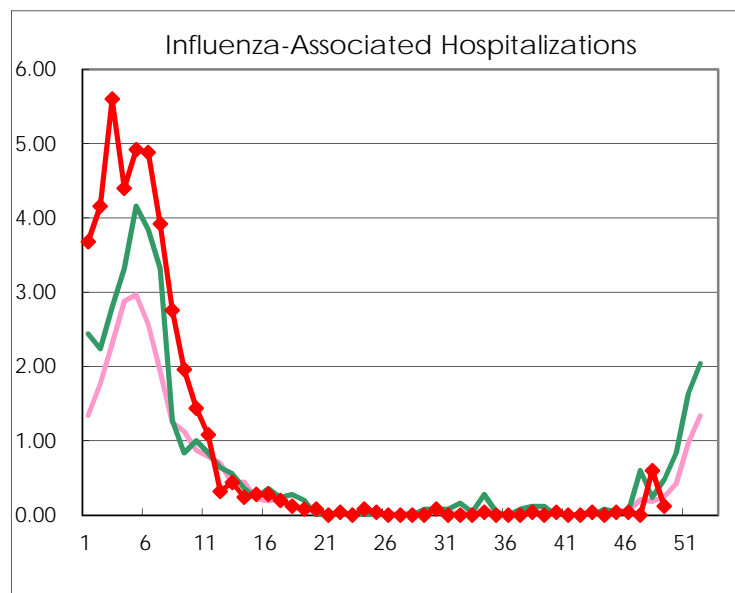
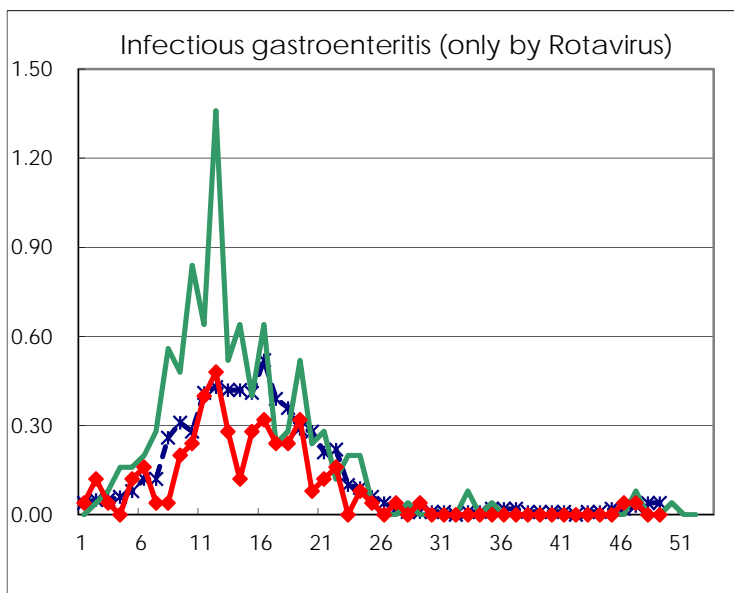
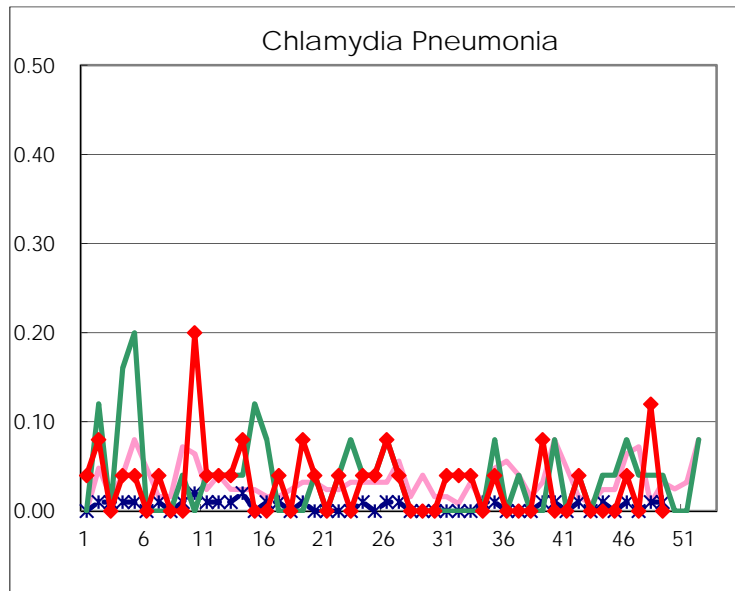
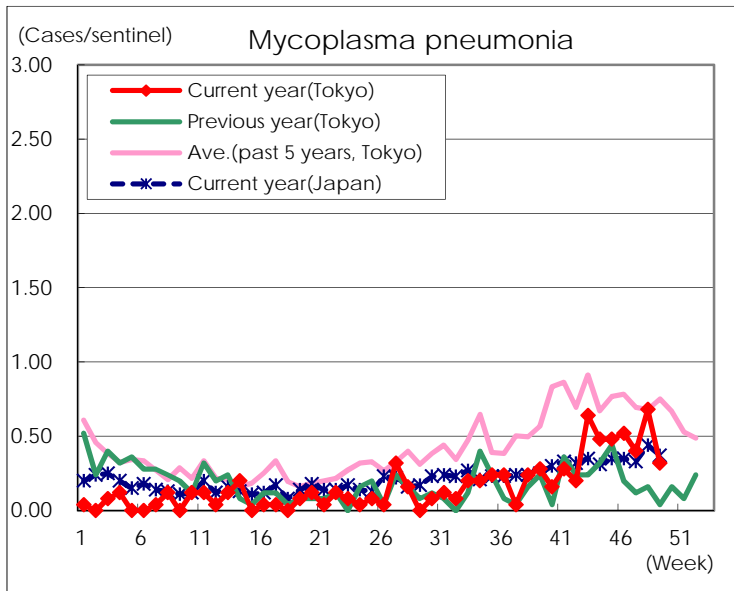
(Blank means 0.)

Disease Trend Graph (weekly reported cases per sentinel in comparison)









Number of sentinel facilities for weekly reporting		
Types of sentinels	Number of sentinels	Sentinels having reported
Pediatric	264	262
Influenza	419	417
Ophthalmic	39	38
Specially-designated	25	25