

27 December 2018 / Number 51

Surveillance System in Tokyo, Japan

The infectious diseases which all physicians must report

All physicians must report to health centers the incidence of the diseases which are shown at page one. Health centers electronically report the individual cases to Tokyo Metropolitan Infectious Disease Surveillance Center.

The infectious diseases required to be reported by the sentinels

The numbers of patients who visit the sentinel clinics or hospitals during a week are reported to health centers in Tokyo. And they electronically report the numbers to Tokyo Metropolitan Infectious Disease Surveillance Center. We have about 500 sentinel clinics and hospitals in Tokyo.

Tokyo Metropolitan Institute of Public Health

TEL:81-3-3363-3213 FAX:81-3-5332-7365

e-mail:www@tokyo-eiken.go.jp

URL:idsc.tokyo-eiken.go.jp/

Number of patients with the diseases which all physicians must report

Category	Diseases	Tokyo					Japan	
		48th	49th	50th	51st	Cum 2018	51st	Cum 2018
I	Ebola hemorrhagic fever							
	Crimean-Congo hemorrhagic fever							
	Smallpox							
	South American hemorrhagic fever							
	Plague							
	Marburg disease							
	Lassa fever							
II	Acute poliomyelitis							
	Tuberculosis	62	66	60	38	3,224	349	21,342
	Diphtheria							
	Severe Acute Respiratory Syndrome(SARS)							
	Middle East Respiratory Syndrome (MERS)							
	Avian influenza H5N1							
	Avian influenza H7N9							
III	Cholera							4
	Shigellosis	4	17	9	2	109	3	267
	Enterohemorrhagic Escherichia coli infection	10	1	5		462	20	3,815
	Typhoid fever					11		35
	Paratyphoid fever	1		1		10		23
IV	Hepatitis E	2		2	1	100	5	435
	West Nile fever							
	Hepatitis A	5	5	4	3	421	8	918
	Echinococcosis							12
	Yellow fever							
	Psittacosis					2		6
	Omsk hemorrhagic fever							
	Relapsing fever							6
	Kyasanur forest disease							
	Q fever					2		3
	Rabies							
	Coccidioidomycosis							2
	Monkeypox							
	Zika virus infection							
	Severe Fever with Thrombocytopenia Syndrome							77
	Hemorrhagic fever with renal syndrome							
	Western equine encephalitis							
	Tick-borne encephalitis							1
	Anthrax							
	Chikungunya fever							4
	Scrub typhus(Tsutsugamushi disease)	1	1	1		9	17	417
	Dengue fever	1	1	1		61	3	198
	Eastern equine encephalitis							
	Avian influenza (excluding H5N1 and H7N9)							
	Nipah virus infection							
	Japanese spotted fever							301
	Japanese encephalitis							
	Hantavirus pulmonary syndrome							
	Herpes B virus infection							
	Glanders							
	Brucellosis							3
	Venezuelan equine encephalitis							
	Hendra virus infection							
Epidemic typhus								
Botulism					1		2	
Malaria				1	14	2	49	
Tularemia								
Lyme disease					1		13	
Lyssavirus infection(excluding rabies)								
Rift valley fever								
Melioidosis					1		2	
Legionellosis	3		1	6	159	38	2,098	
Leptospirosis					5		31	
Rocky mountain spotted fever								

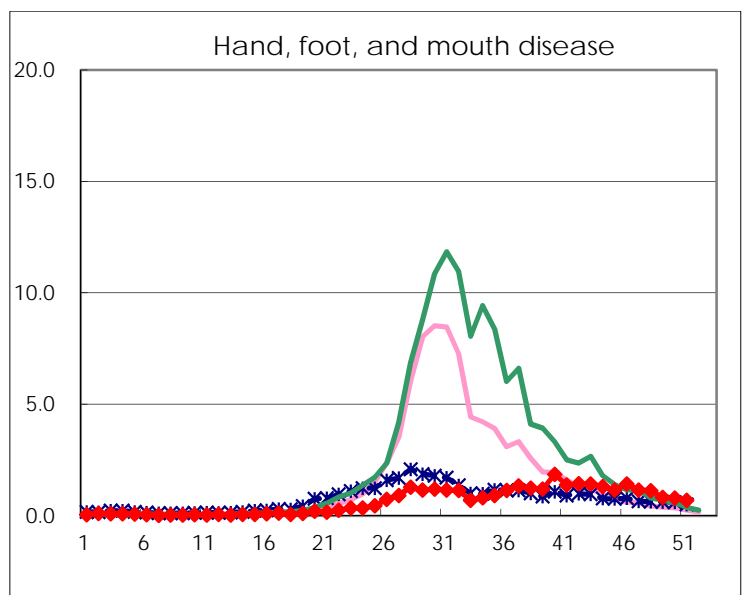
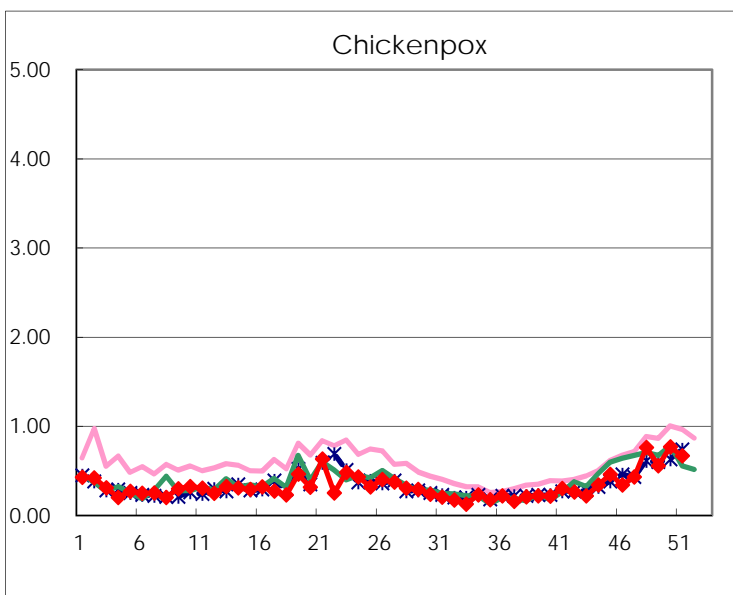
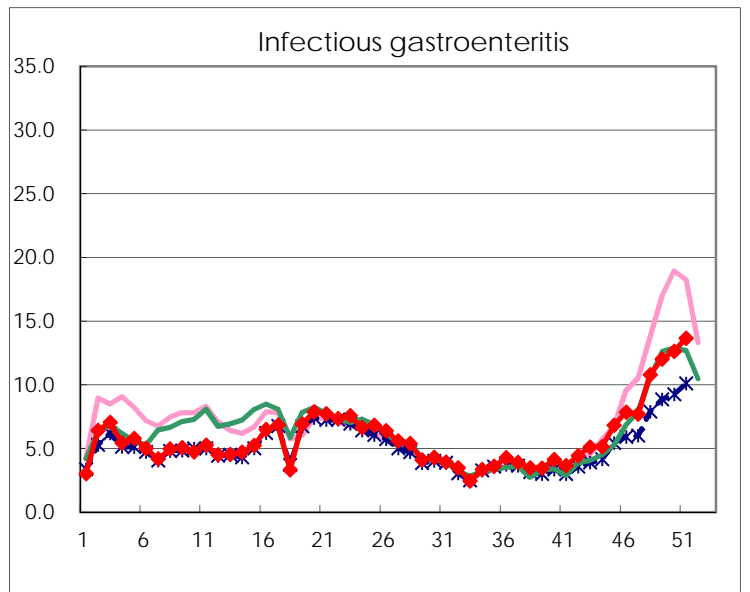
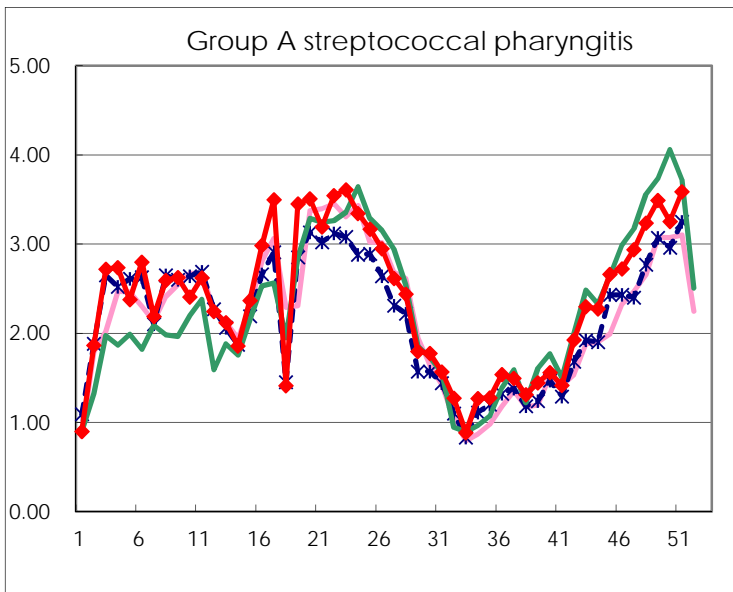
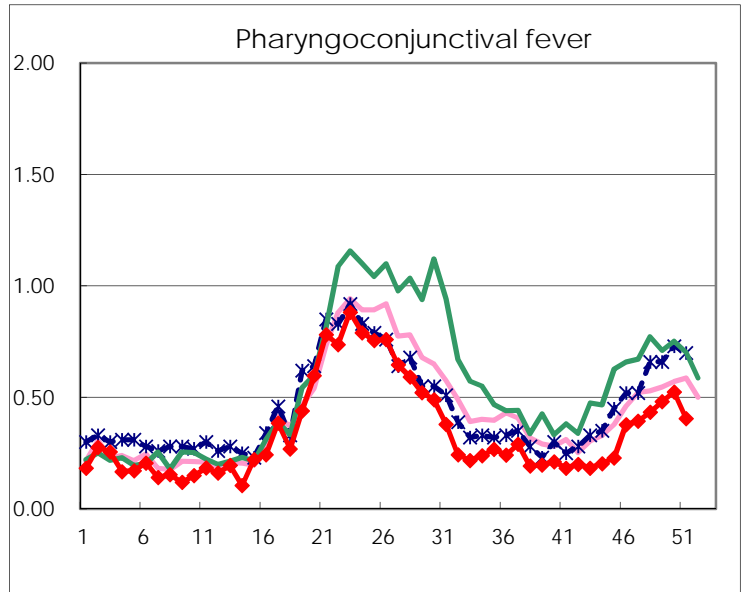
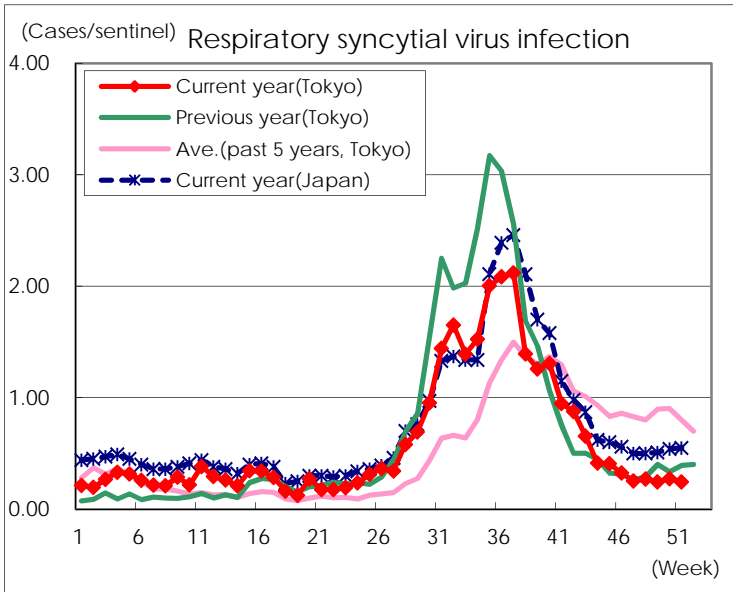
Category	Diseases	Tokyo				Japan		
		48th	49th	50th	51st	Cum 2018	51st	Cum 2018
V	Amebiasis	2		3	7	162	8	816
	Viral hepatitis(excluding hepatitis A and E)	1	4	3		67	2	257
	CRE infection	3	7	5	8	227	38	2,196
	Acute Flaccid Paralysis (excluding Acute poliomyelitis)			1		8	2	138
	Acute encephalitis(excluding JE and WNE)	2	1	1		60	10	634
	Cryptosporidiosis					3	1	25
	Creutzfeldt-Jakob disease		1			25	2	215
	Severe invasive streptococcal infections(TSLs)	1	1	1	1	85	11	669
	Acquired immunodeficiency syndrome (AIDS)	9	9	8	12	411	12	1,262
	Giardiasis					19		67
	Invasive <i>Haemophilus influenzae</i> disease	1	1		2	40	9	470
	Invasive meningococcal disease					6	1	35
	Invasive pneumococcal disease	13	12	7	4	380	42	3,197
	Varicella (limited to hospitalized case)	1		2	1	57	6	446
	Congenital rubella syndrome							
	Syphilis	36	40	39	28	1,734	79	6,782
	Disseminated cryptococcosis	1				18	4	175
	Tetanus					8	1	124
	Vancomycin-resistant <i>S. aureus</i> infection							
	Vancomycin-resistant <i>Enterococcus</i> infection				1	7		77
	Pertussis	89	105	66	76	2,355	250	11,560
	Rubella	38	28	33	24	923	84	2,806
	Measles		1		1	21	2	274
MDRA infection					4		23	

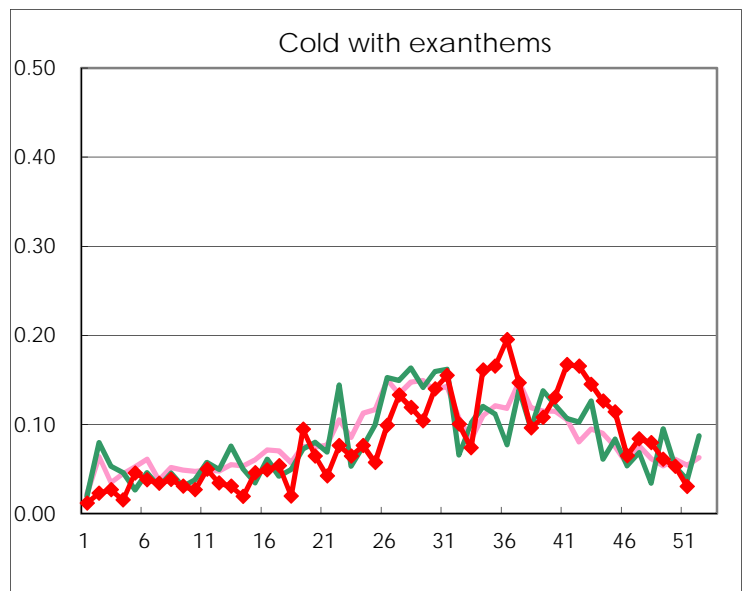
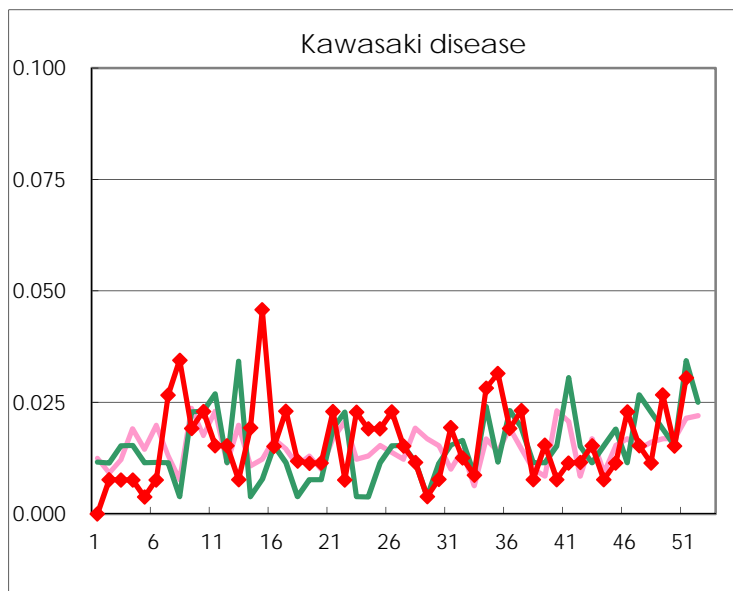
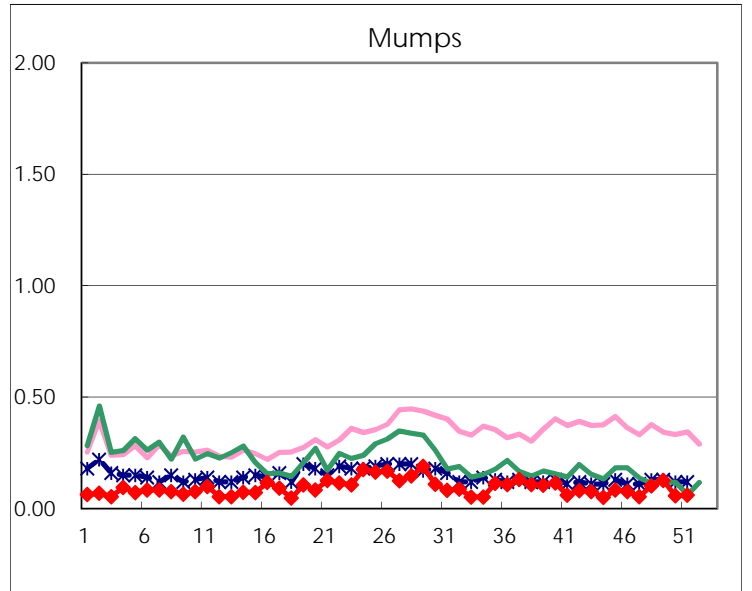
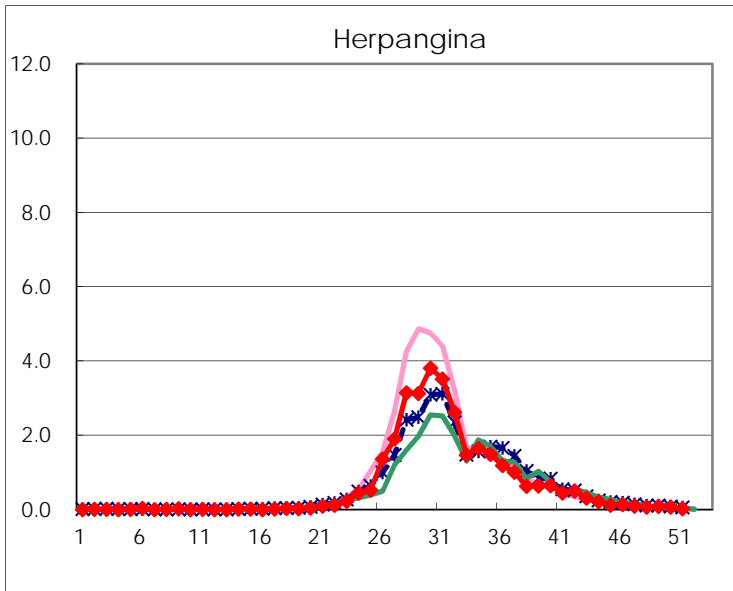
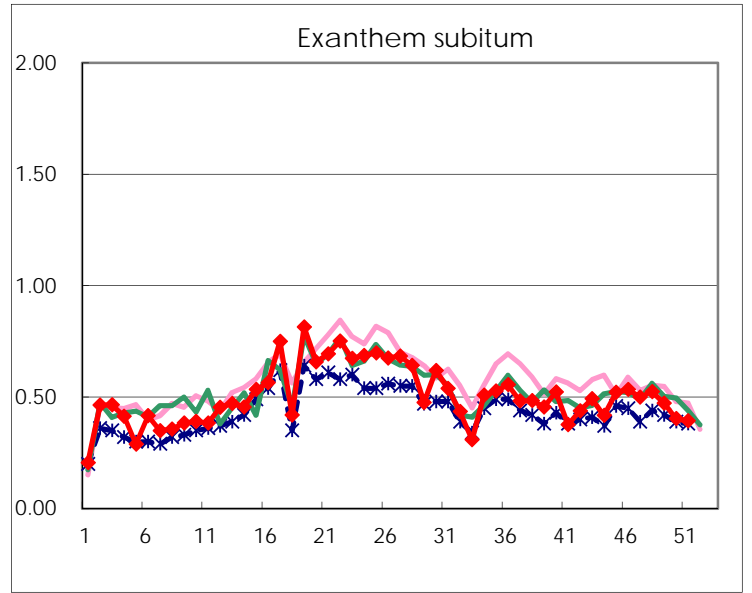
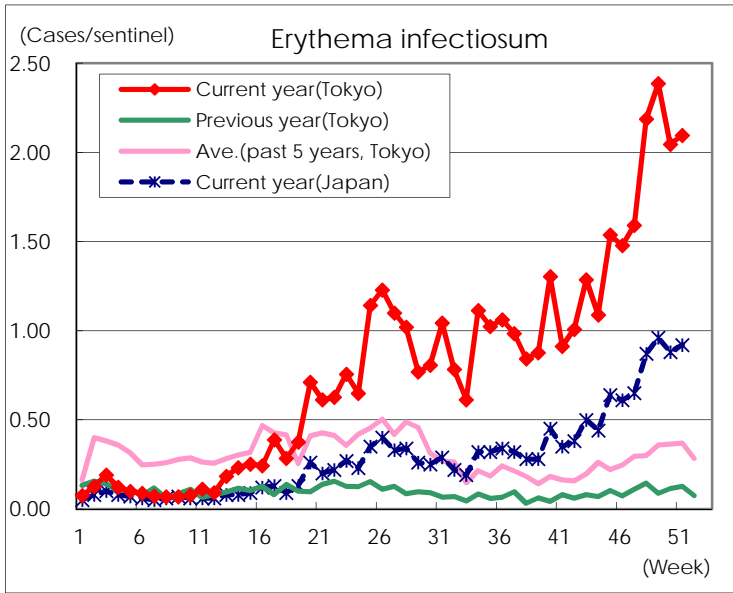
Number of patients with the diseases to be reported
by the designated clinics and hospitals

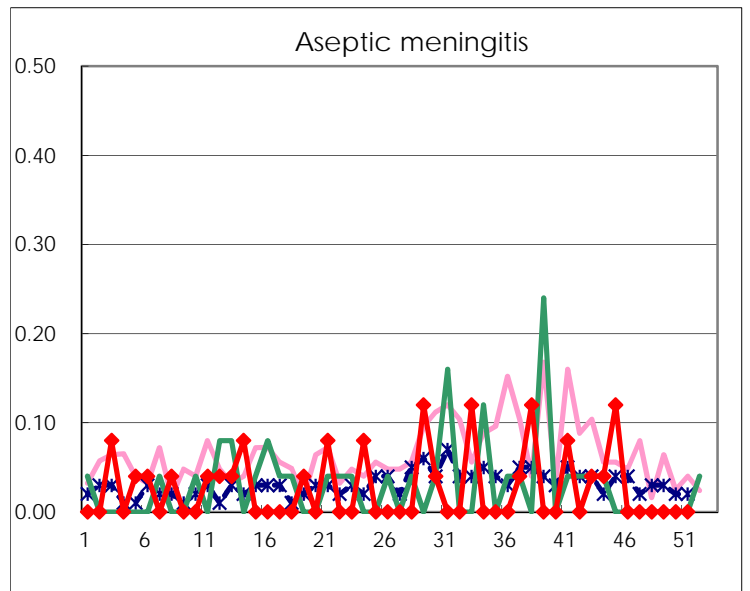
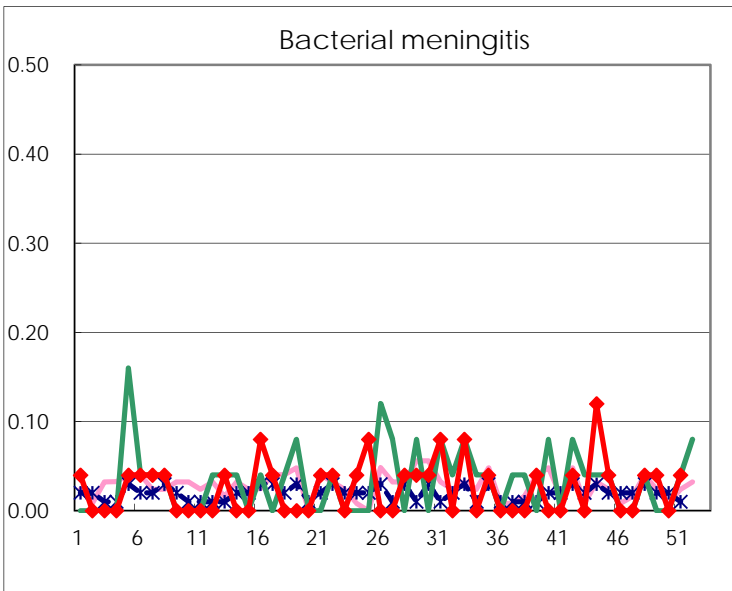
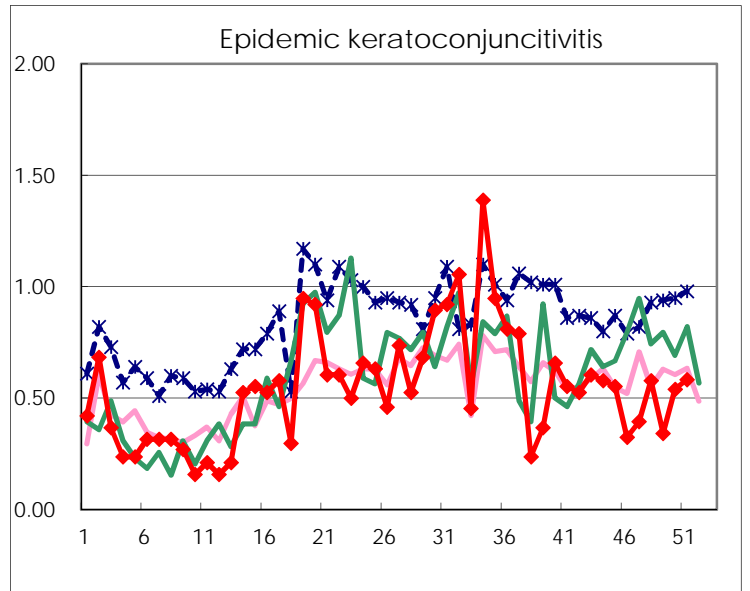
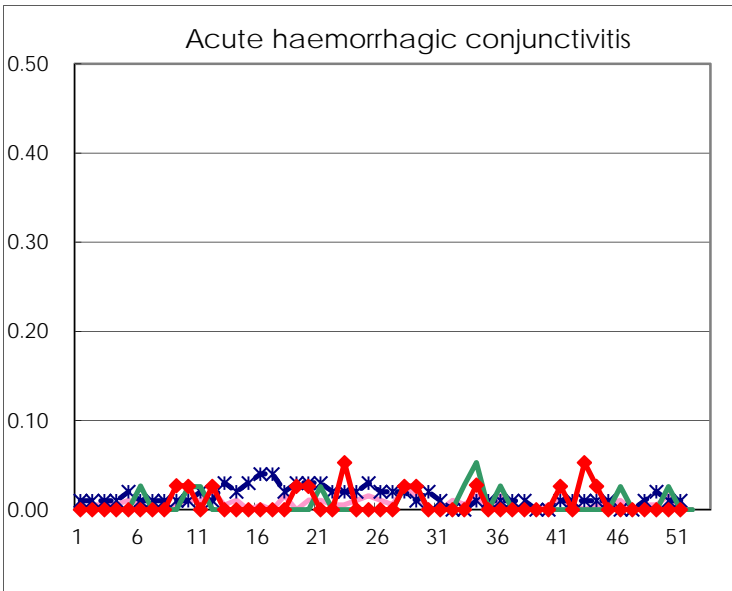
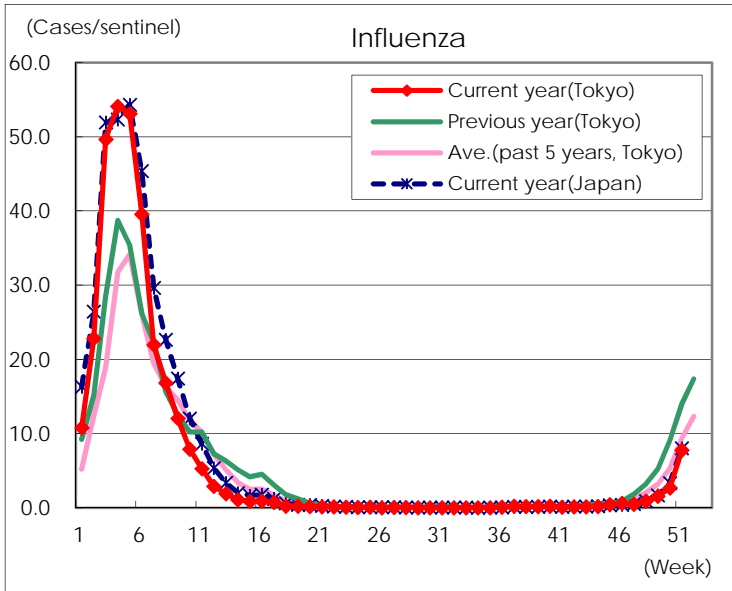
Diseases	Tokyo				
	48th	49th	50th	51st	/sentinel
Respiratory syncytial virus infection	71	64	72	64	0.24
Pharyngoconjunctival fever	114	126	138	106	0.40
Group A streptococcal pharyngitis	851	914	856	940	3.59
Infectious gastroenteritis	2,838	3,151	3,319	3,573	13.64
Chickenpox	200	146	202	175	0.67
Hand, foot, and mouth disease	296	214	209	181	0.69
Erythema infectiosum	575	625	538	549	2.10
Exanthem subitum	138	124	106	103	0.39
Herpangina	18	22	18	8	0.03
Mumps	27	33	15	16	0.06
Kawasaki disease	3	7	4	8	0.03
Cold with exanthems	21	16	14	8	0.03
Influenza	392	654	1,117	3,233	7.79
Acute hemorrhagic conjunctivitis					
Epidemic keratoconjunctivitis	22	13	20	21	0.58
Bacterial meningitis	1	1		1	0.04
Aseptic meningitis					
<i>Mycoplasma pneumoniae</i>	17	8	7	17	0.68
Chlamydial pneumonia (excluding psittacosis)	3			1	0.04
Infectious gastroenteritis (only by Rotavirus)			1	2	0.08
Influenza-Associated Hospitalizations	15	3	5	20	0.80

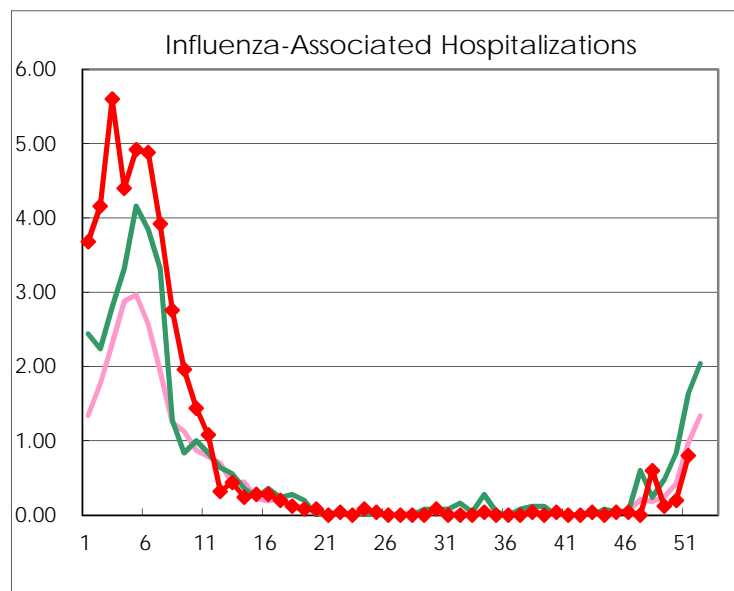
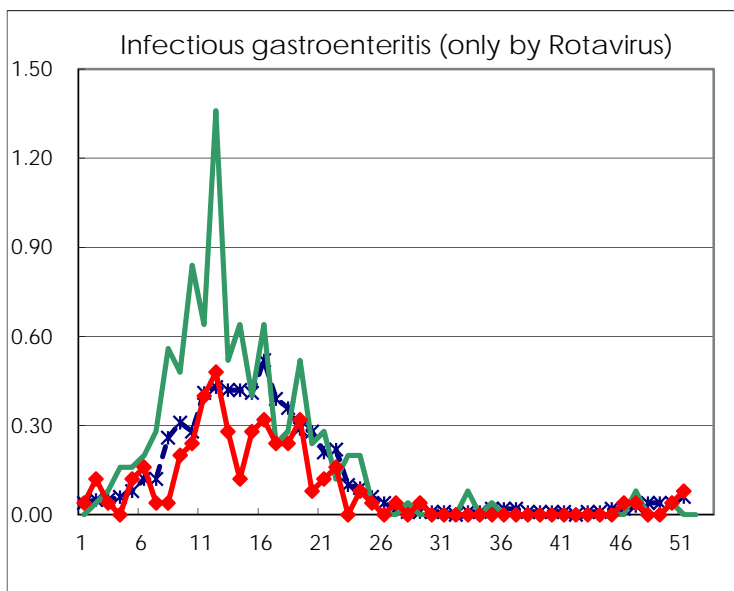
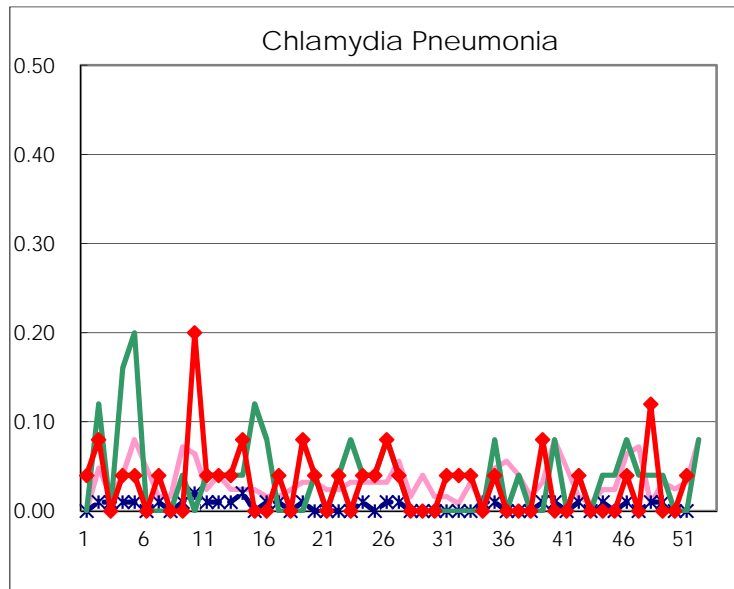
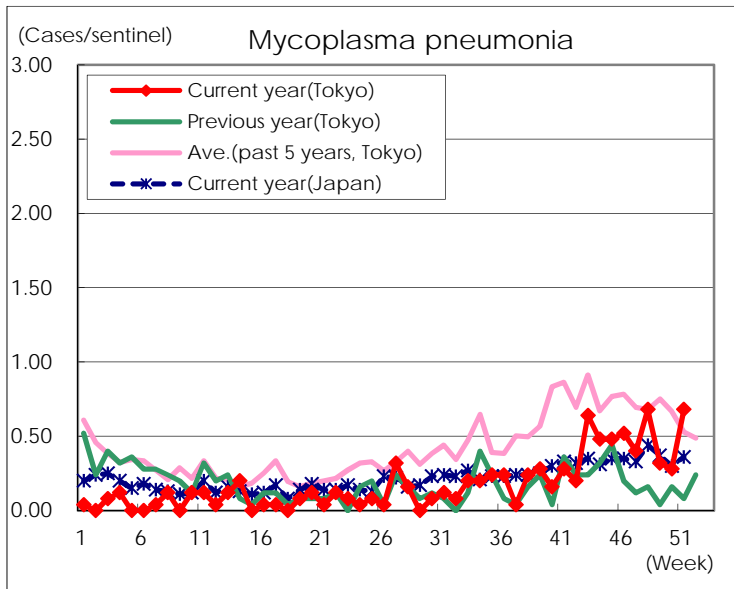
(Blank means 0.)

Disease Trend Graph (weekly reported cases per sentinel in comparison)









Number of sentinel facilities for weekly reporting		
Types of sentinels	Number of sentinels	Sentinels having reported
Pediatric	264	262
Influenza	419	415
Ophthalmic	39	36
Specially-designated	25	25