

7 March 2019 / Number 9

Surveillance System in Tokyo, Japan

The infectious diseases which all physicians must report

All physicians must report to health centers the incidence of the diseases which are shown at page one. Health centers electronically report the individual cases to Tokyo Metropolitan Infectious Disease Surveillance Center.

The infectious diseases required to be reported by the sentinels

The numbers of patients who visit the sentinel clinics or hospitals during a week are reported to health centers in Tokyo. And they electronically report the numbers to Tokyo Metropolitan Infectious Disease Surveillance Center. We have about 500 sentinel clinics and hospitals in Tokyo.

Tokyo Metropolitan Institute of Public Health

TEL:81-3-3363-3213 FAX:81-3-5332-7365

e-mail:www@tokyo-eiken.go.jp

URL:idsc.tokyo-eiken.go.jp/

Number of patients with the diseases which all physicians must report

Category	Diseases	Tokyo					Japan	
		6th	7th	8th	9th	Cum 2019	9th	Cum 2019
I	Ebola hemorrhagic fever							
	Crimean-Congo hemorrhagic fever							
	Smallpox							
	South American hemorrhagic fever							
	Plague							
	Marburg disease							
	Lassa fever							
II	Acute poliomyelitis							
	Tuberculosis	56	46	70	56	458	352	3,140
	Diphtheria							
	Severe Acute Respiratory Syndrome(SARS)							
	Middle East Respiratory Syndrome (MERS)							
	Avian influenza H5N1							
	Avian influenza H7N9							
III	Cholera							
	Shigellosis				1	3	3	14
	Enterohemorrhagic Escherichia coli infection			4	8	26	22	183
	Typhoid fever					1		6
	Paratyphoid fever	1				1		3
IV	Hepatitis E	1	2	4	2	18	8	65
	West Nile fever							
	Hepatitis A	2	1	2	1	12	7	91
	Echinococcosis							1
	Yellow fever							
	Psittacosis						3	5
	Omsk hemorrhagic fever							
	Relapsing fever							
	Kyasanur forest disease							
	Q fever							
	Rabies							
	Coccidioidomycosis							1
	Monkeypox							
	Zika virus infection							
	Severe Fever with Thrombocytopenia Syndrome						1	2
	Hemorrhagic fever with renal syndrome							
	Western equine encephalitis							
	Tick-borne encephalitis							
	Anthrax							
	Chikungunya fever							1
	Scrub typhus(Tsutsugamushi disease)							40
	Dengue fever		2		3	19	7	49
	Eastern equine encephalitis							
	Avian influenza (excluding H5N1 and H7N9)							
	Nipah virus infection							
	Japanese spotted fever							4
	Japanese encephalitis							
	Hantavirus pulmonary syndrome							
	Herpes B virus infection							
	Glanders							
	Brucellosis							
	Venezuelan equine encephalitis							
	Hendra virus infection							
	Epidemic typhus							
	Botulism							
Malaria					2		5	
Tularemia								
Lyme disease								
Lyssavirus infection(excluding rabies)								
Rift valley fever								
Melioidosis								
Legionellosis	3	1	1	2	26	18	239	
Leptospirosis								
Rocky mountain spotted fever								

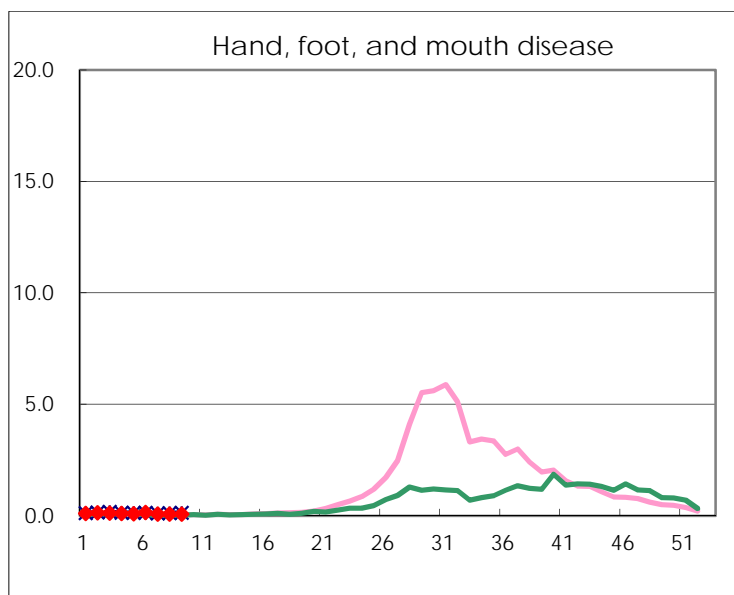
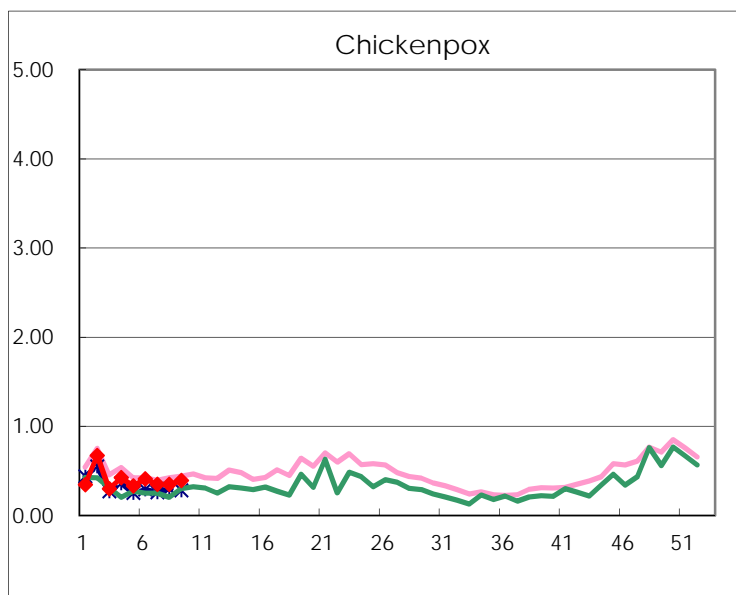
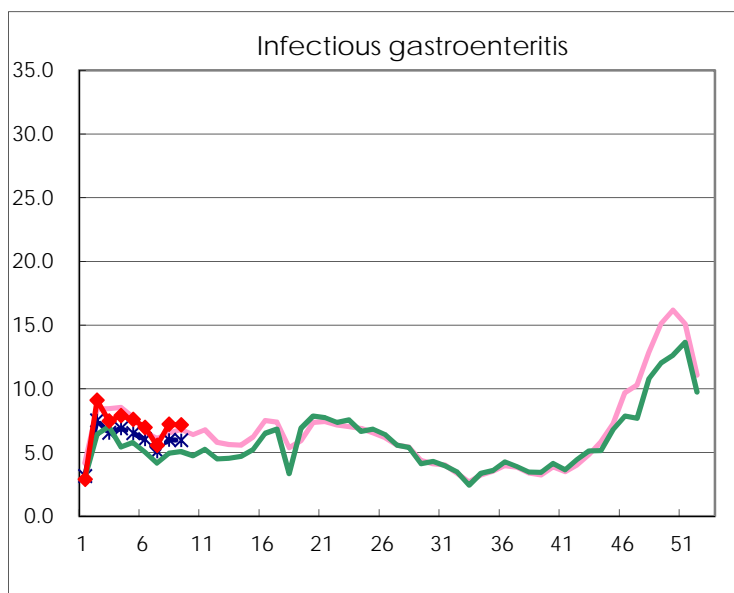
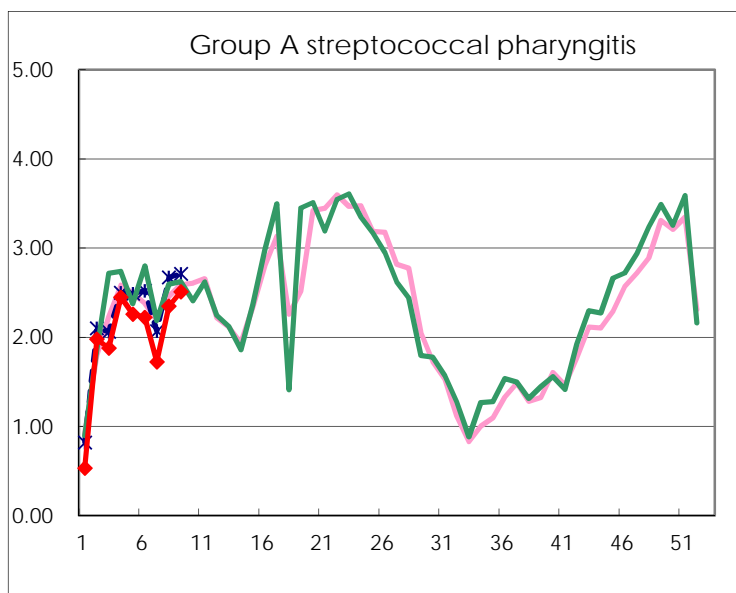
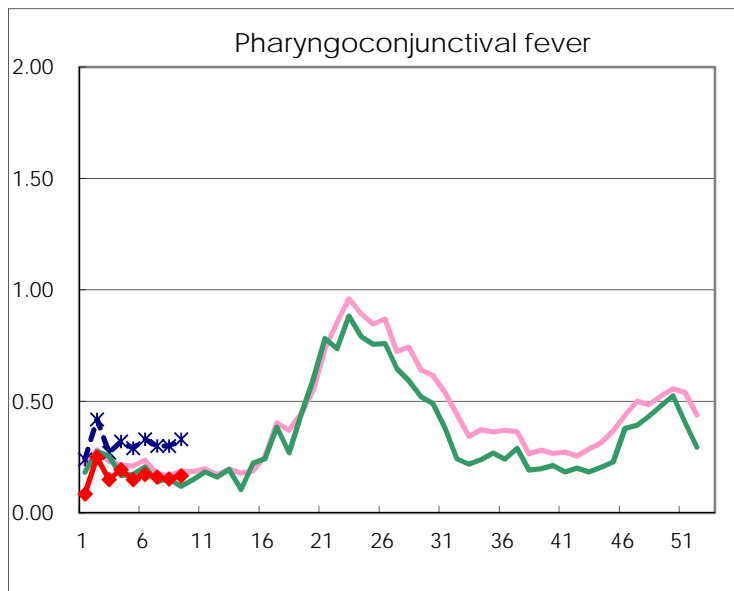
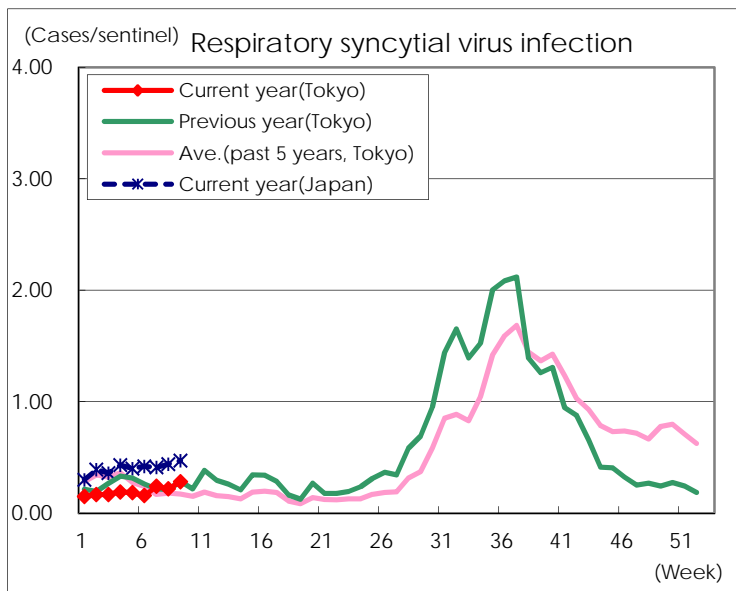
Category	Diseases	Tokyo					Japan	
		6th	7th	8th	9th	Cum 2019	9th	Cum 2019
V	Amebiasis	5		4	4	28	9	133
	Viral hepatitis(excluding hepatitis A and E)	3	1		3	12	6	54
	CRE infection		3	7	4	35	21	329
	Acute Flaccid Paralysis (excluding Acute poliomyelitis)							11
	Acute encephalitis(excluding JE and WNE)	4	4	1	1	32	7	277
	Cryptosporidiosis							
	Creutzfeldt-Jakob disease		2	2		7		25
	Severe invasive streptococcal infections(TSLs)	4	1	1	2	19	14	182
	Acquired immunodeficiency syndrome (AIDS)	7	12	5	7	64	6	166
	Giardiasis					1		6
	Invasive <i>Haemophilus influenzae</i> disease	1	1	1	2	21	4	120
	Invasive meningococcal disease					1	1	12
	Invasive pneumococcal disease	6	7	11	7	94	42	679
	Varicella (limited to hospitalized case)	2	1			7	6	70
	Congenital rubella syndrome							1
	Syphilis	31	39	40	43	299	102	998
	Disseminated cryptococcosis					2	4	24
	Tetanus							8
	Vancomycin-resistant <i>S. aureus</i> infection							
	Vancomycin-resistant <i>Enterococcus</i> infection						2	13
	Pertussis	40	32	40	33	369	237	2,651
	Rubella	26	13	33	39	219	113	768
Measles		3	5	7	26	26	285	
MDRA infection					2	1	5	

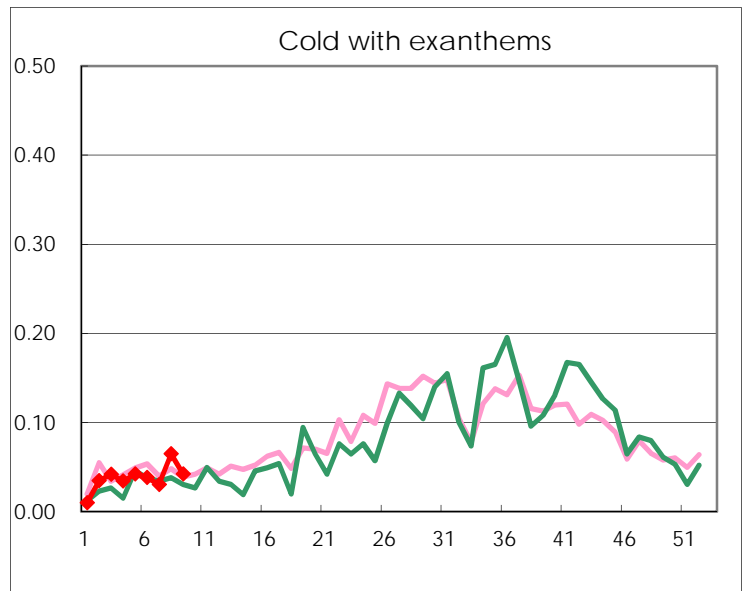
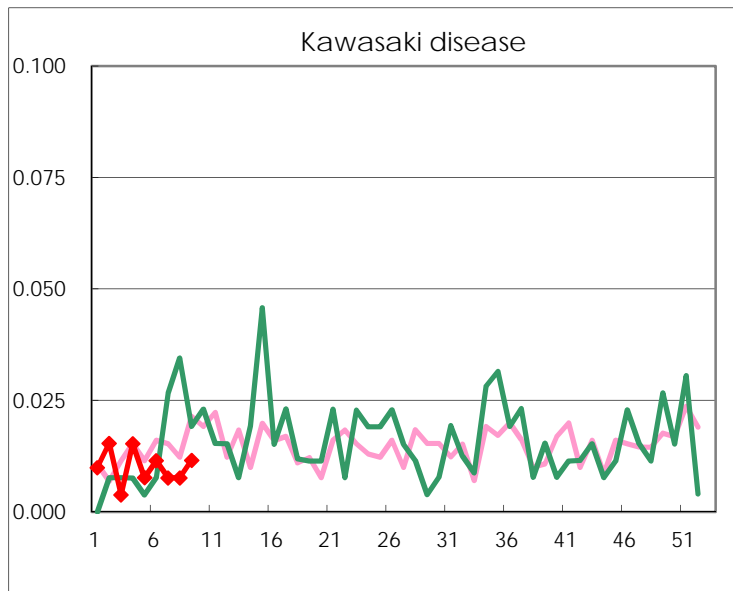
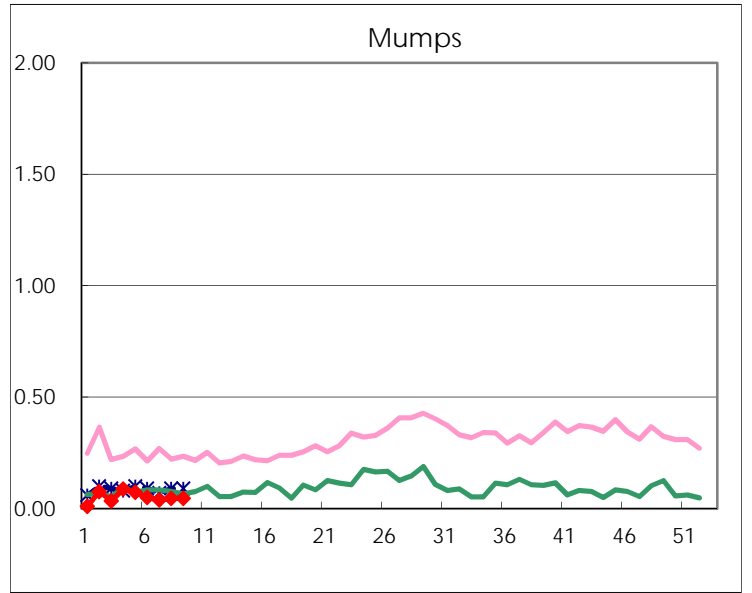
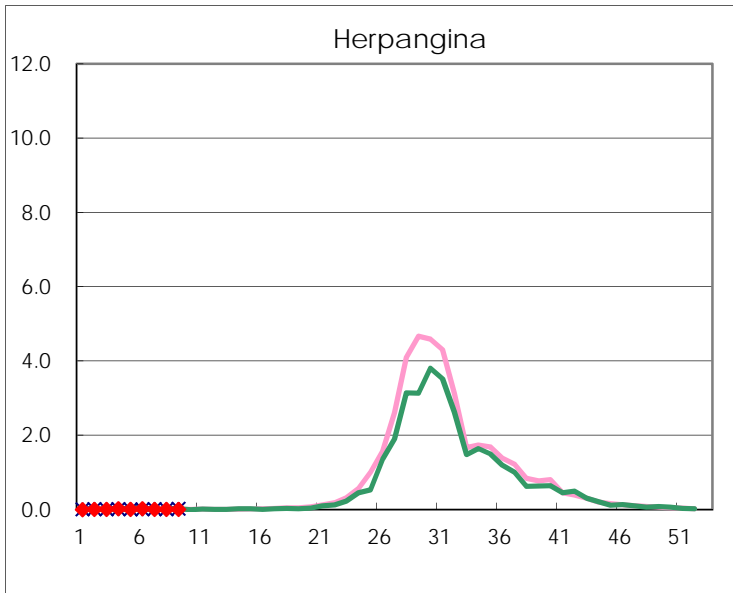
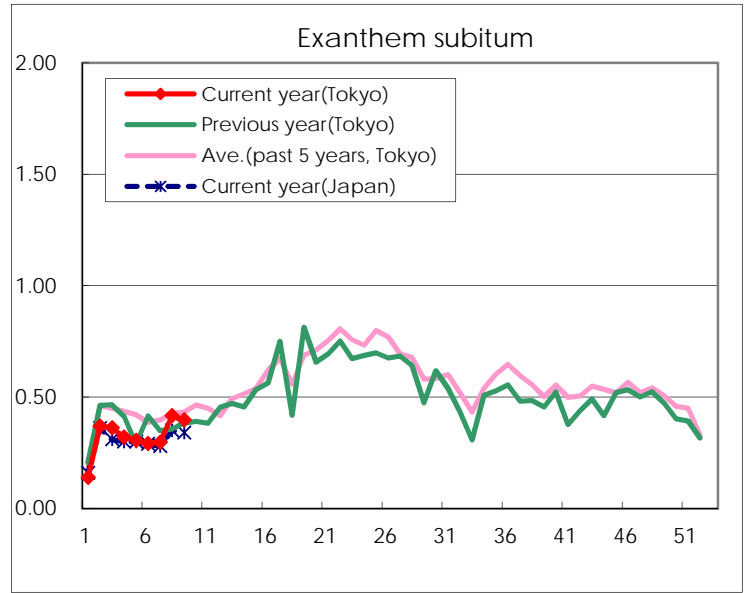
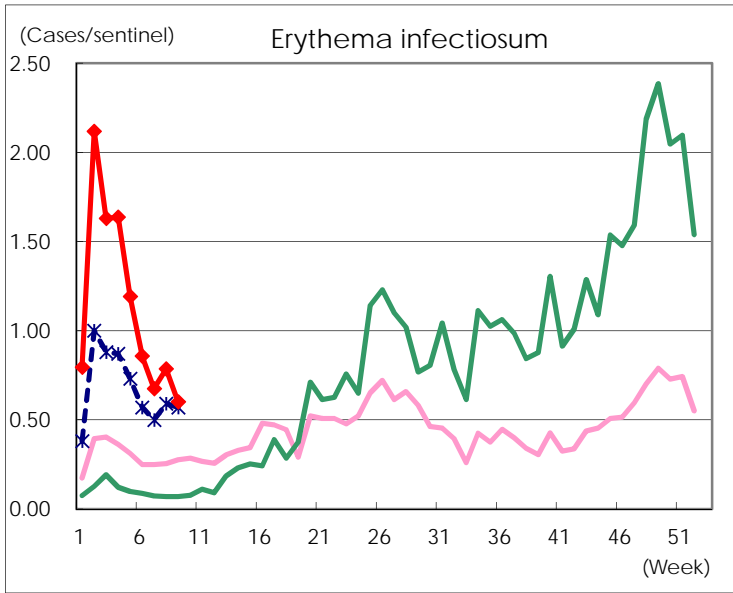
Number of patients with the diseases to be reported
by the designated clinics and hospitals

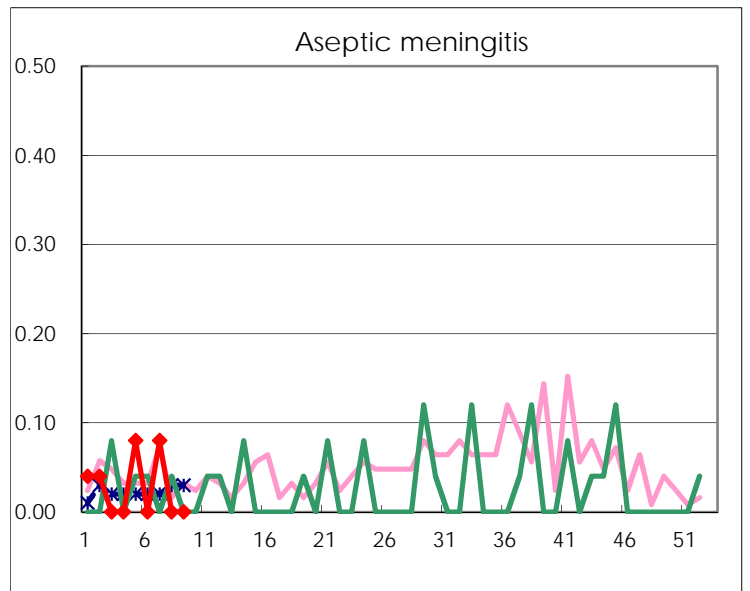
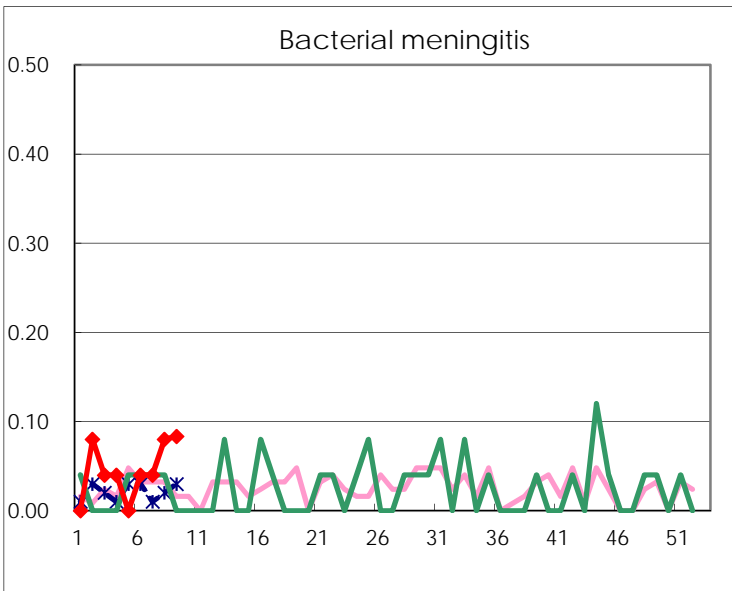
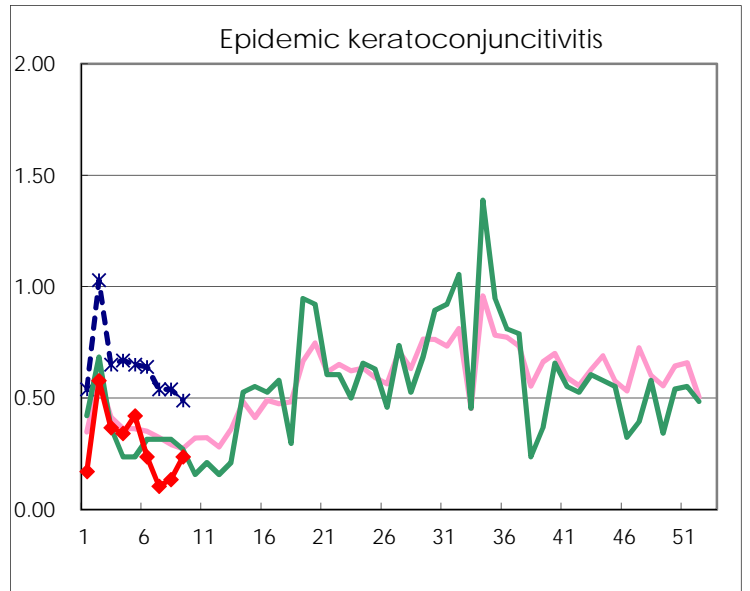
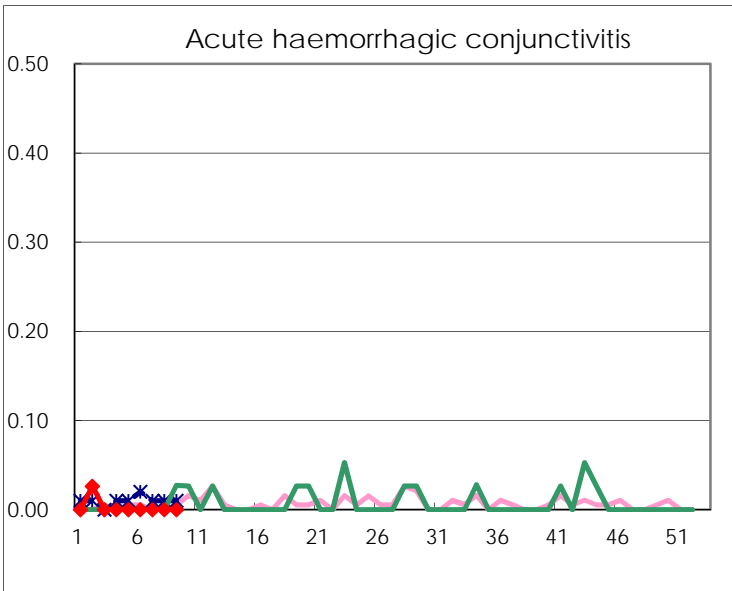
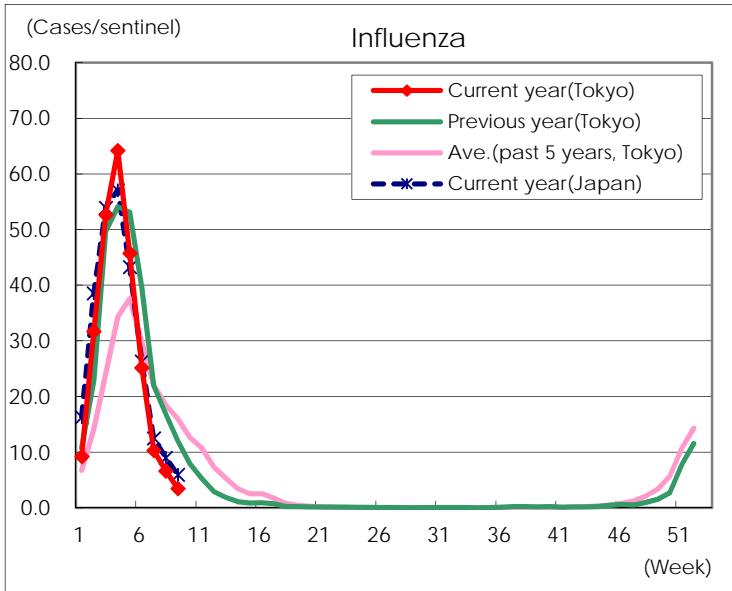
Diseases	Tokyo				
	6th	7th	8th	9th	/sentinel
Respiratory syncytial virus infection	41	63	57	73	0.28
Pharyngoconjunctival fever	45	42	40	43	0.17
Group A streptococcal pharyngitis	580	452	615	650	2.51
Infectious gastroenteritis	1,819	1,453	1,888	1,855	7.16
Chickenpox	107	91	91	101	0.39
Hand, foot, and mouth disease	37	20	19	17	0.07
Erythema infectiosum	224	177	206	156	0.60
Exanthem subitum	76	78	109	103	0.40
Herpangina	6	3	2	3	0.01
Mumps	13	10	12	12	0.05
Kawasaki disease	3	2	2	3	0.01
Cold with exanthems	10	8	17	11	0.04
Influenza	10,421	4,281	2,739	1,434	3.47
Acute hemorrhagic conjunctivitis					
Epidemic keratoconjunctivitis	9	4	5	9	0.24
Bacterial meningitis	1	1	2	2	0.08
Aseptic meningitis		2			
<i>Mycoplasma pneumoniae</i>	2	2		4	0.17
Chlamydial pneumonia (excluding psittacosis)	2	1			
Infectious gastroenteritis (only by Rotavirus)	8	9	3	6	0.25
Influenza-Associated Hospitalizations	121	56	36	21	0.88

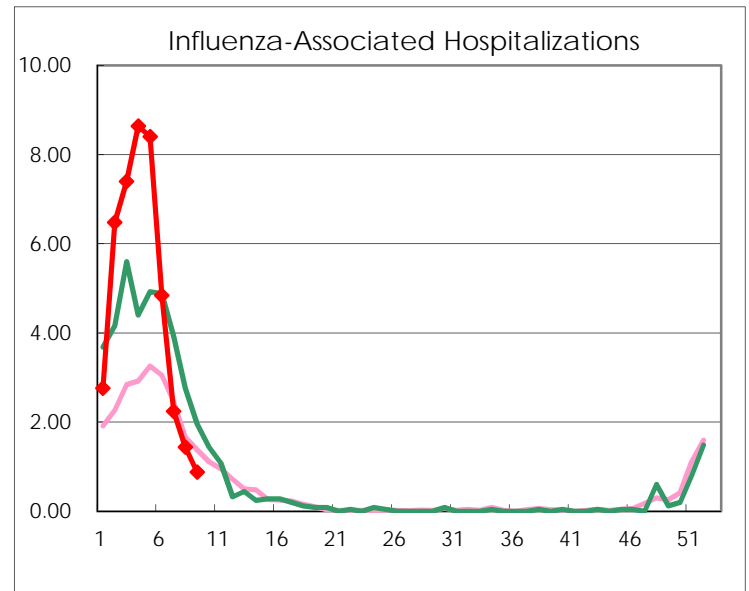
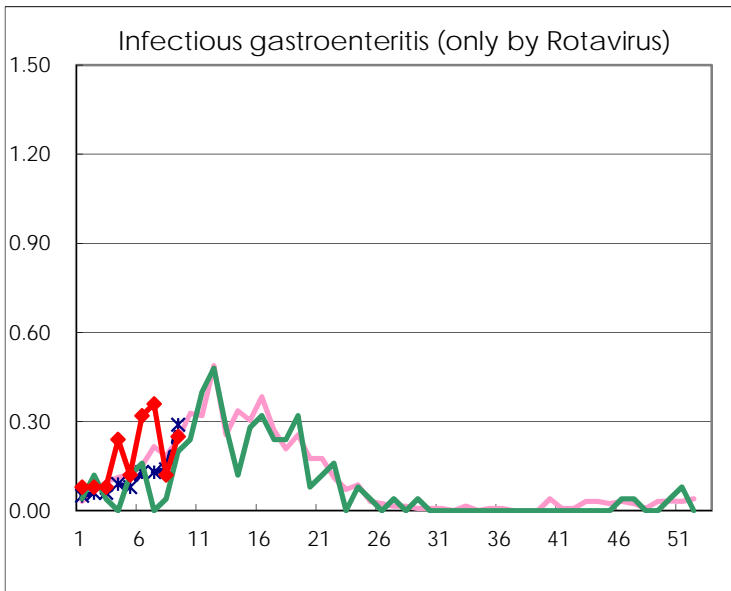
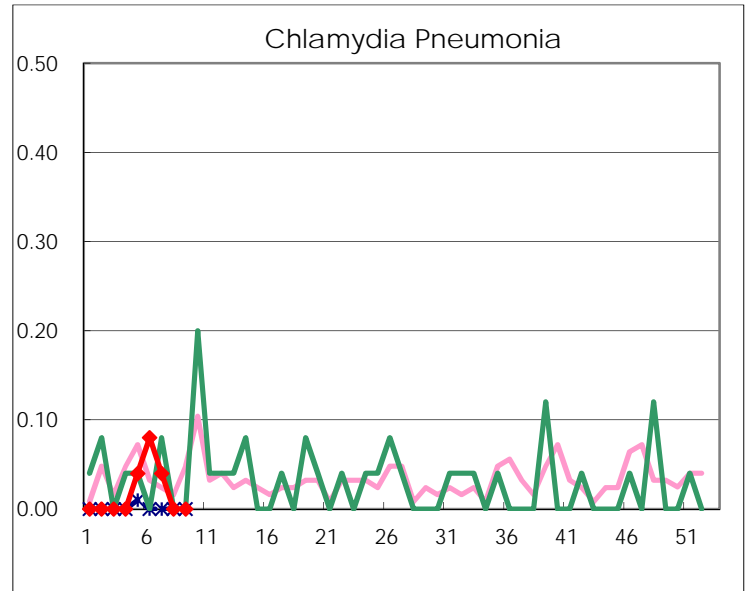
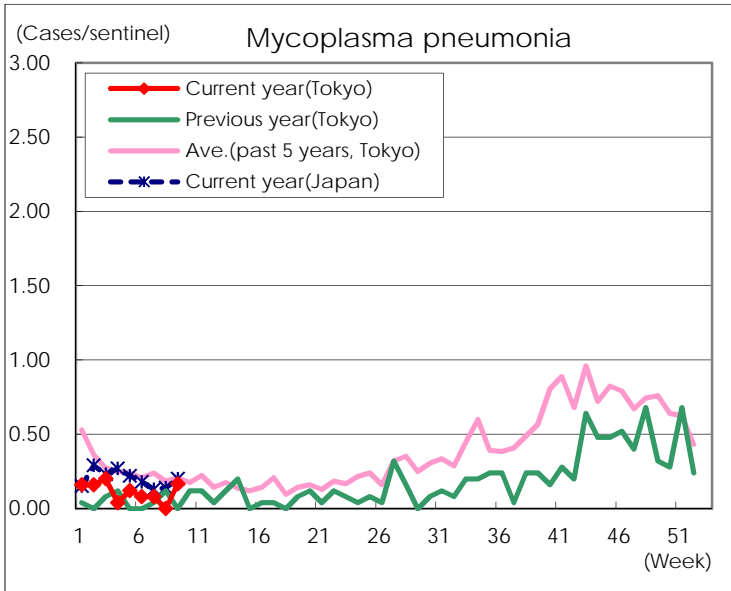
(Blank means 0.)

Disease Trend Graph (weekly reported cases per sentinel in comparison)









Number of sentinel facilities for weekly reporting		
Types of sentinels	Number of sentinels	Sentinels having reported
Pediatric	264	259
Influenza	419	413
Ophthalmic	39	38
Specially-designated	25	24