

**28 March 2019 / Number 12**

## Surveillance System in Tokyo, Japan

The infectious diseases which all physicians must report

All physicians must report to health centers the incidence of the diseases which are shown at page one. Health centers electronically report the individual cases to Tokyo Metropolitan Infectious Disease Surveillance Center.

The infectious diseases required to be reported by the sentinels

The numbers of patients who visit the sentinel clinics or hospitals during a week are reported to health centers in Tokyo. And they electronically report the numbers to Tokyo Metropolitan Infectious Disease Surveillance Center. We have about 500 sentinel clinics and hospitals in Tokyo.

Tokyo Metropolitan Institute of Public Health

TEL:81-3-3363-3213 FAX:81-3-5332-7365

e-mail:[www@tokyo-eiken.go.jp](mailto:www@tokyo-eiken.go.jp)

URL:[idsc.tokyo-eiken.go.jp/](http://idsc.tokyo-eiken.go.jp/)

---

Number of patients with the diseases which all physicians must report

Category	Diseases	Tokyo					Japan	
		9th	10th	11th	12th	Cum 2019	12th	Cum 2019
I	Ebola hemorrhagic fever							
	Crimean-Congo hemorrhagic fever							
	Smallpox							
	South American hemorrhagic fever							
	Plague							
	Marburg disease							
	Lassa fever							
II	Acute poliomyelitis							
	Tuberculosis	62	60	53	50	632	288	4,376
	Diphtheria							
	Severe Acute Respiratory Syndrome(SARS)							
	Middle East Respiratory Syndrome (MERS)							
	Avian influenza H5N1							
	Avian influenza H7N9							
III	Cholera							
	Shigellosis	1	2	1		6		27
	Enterohemorrhagic Escherichia coli infection	8	1		1	28	16	227
	Typhoid fever					1		7
	Paratyphoid fever					1		4
IV	Hepatitis E	2	3	3	2	26	9	100
	West Nile fever							
	Hepatitis A	1	2	1	2	17	4	108
	Echinococcosis							2
	Yellow fever							
	Psittacosis		1		1	2		7
	Omsk hemorrhagic fever							
	Relapsing fever							
	Kyasanur forest disease							
	Q fever							
	Rabies							
	Coccidioidomycosis							1
	Monkeypox							
	Zika virus infection							
	Severe Fever with Thrombocytopenia Syndrome							4
	Hemorrhagic fever with renal syndrome							
	Western equine encephalitis							
	Tick-borne encephalitis							
	Anthrax							
	Chikungunya fever							2
	Scrub typhus(Tsutsugamushi disease)							40
	Dengue fever	3	2	2	1	24	3	66
	Eastern equine encephalitis							
	Avian influenza (excluding H5N1 and H7N9)							
	Nipah virus infection							
	Japanese spotted fever						1	5
	Japanese encephalitis							
	Hantavirus pulmonary syndrome							
	Herpes B virus infection							
	Glanders							
	Brucellosis							
	Venezuelan equine encephalitis							
	Hendra virus infection							
	Epidemic typhus							
	Botulism							1
	Malaria					2	2	8
Tularemia								
Lyme disease								
Lyssavirus infection(excluding rabies)								
Rift valley fever								
Melioidosis								
Legionellosis	2	1		2	29	18	313	
Leptospirosis			1		1		1	
Rocky mountain spotted fever								

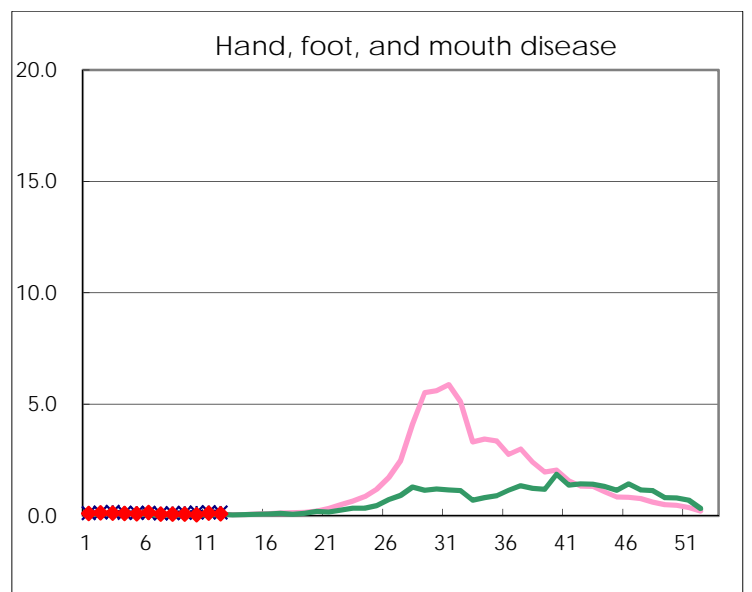
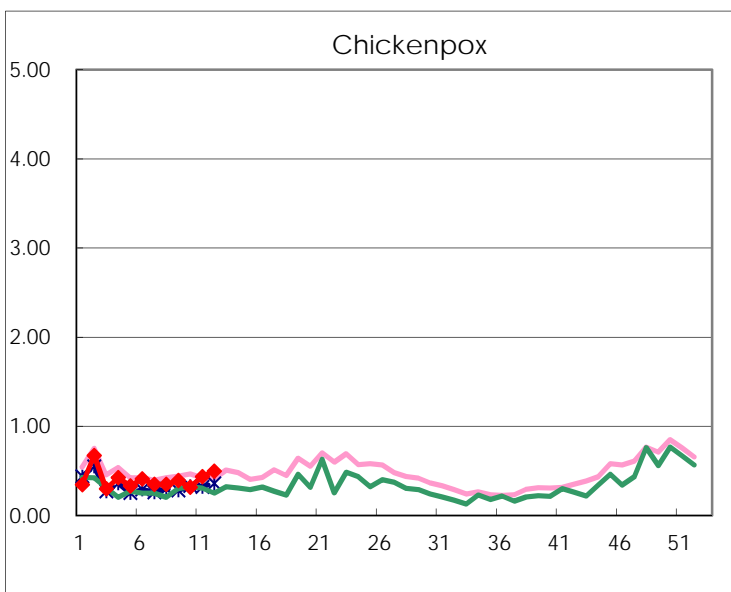
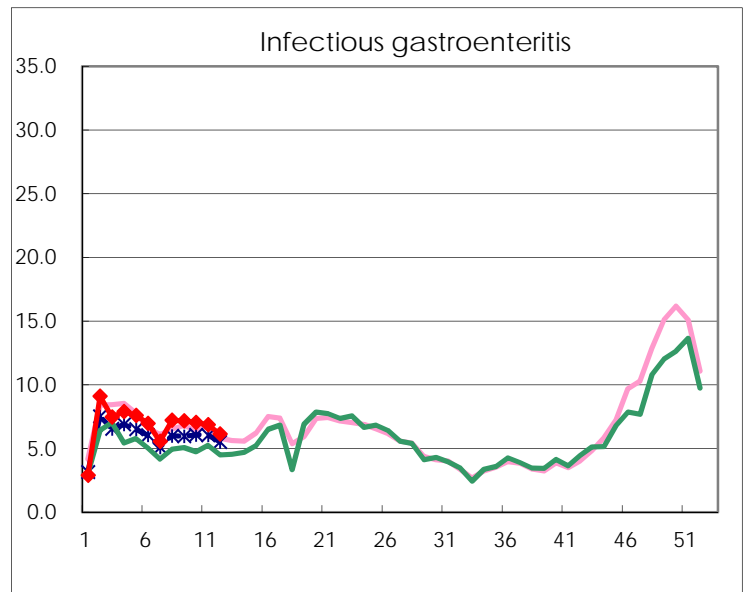
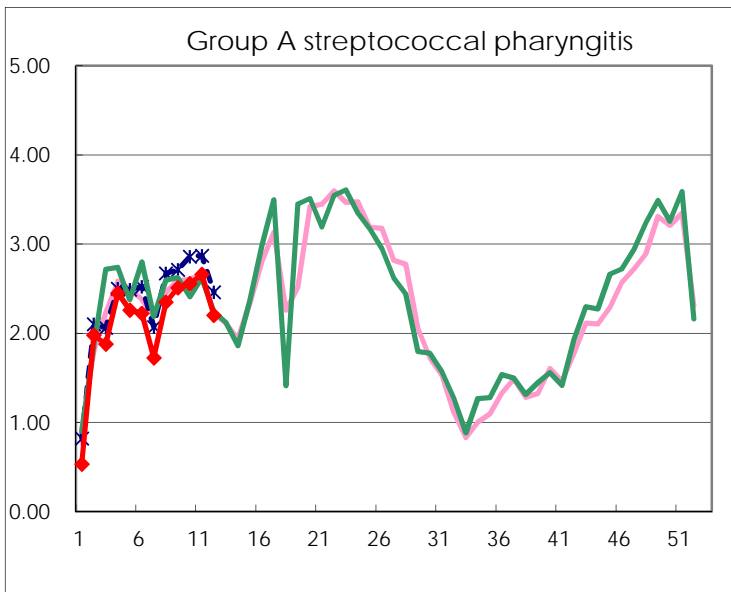
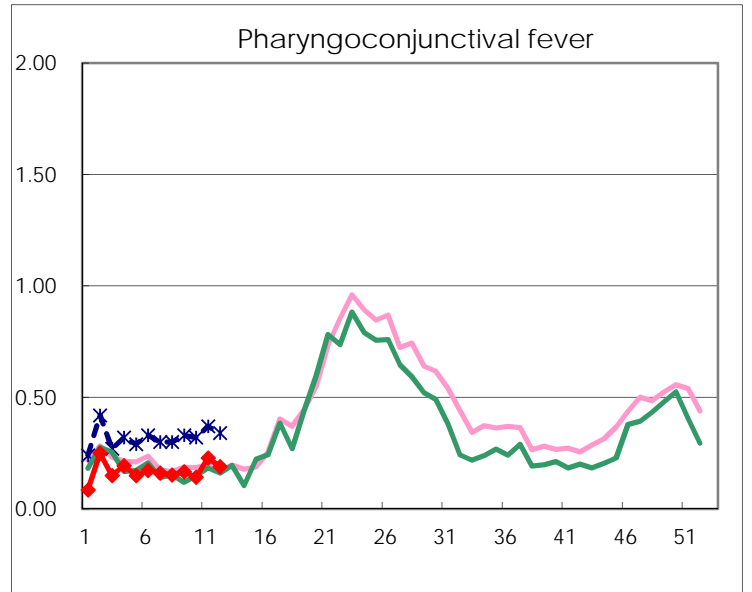
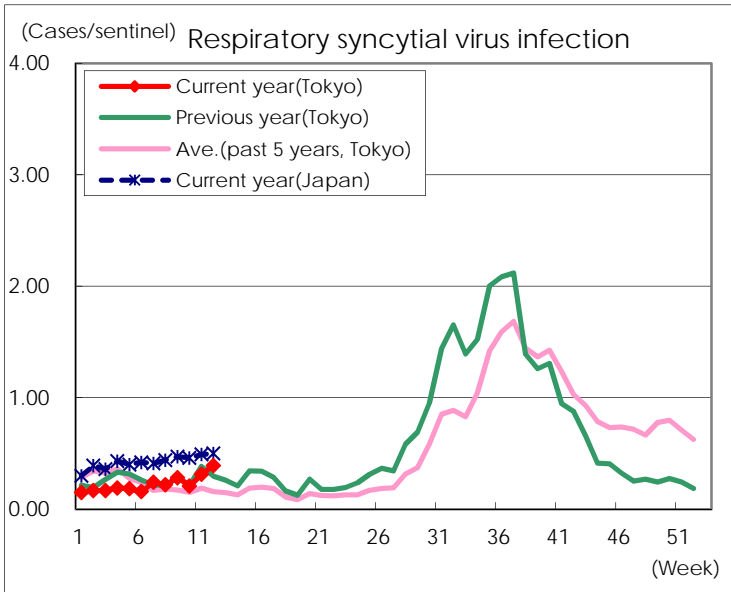
Category	Diseases	Tokyo					Japan	
		9th	10th	11th	12th	Cum 2019	12th	Cum 2019
V	Amebiasis	4	6	6	2	42	8	191
	Viral hepatitis(excluding hepatitis A and E)	3	2	6	3	23	2	77
	CRE infection	4	5	2	5	47	20	425
	Acute Flaccid Paralysis (excluding Acute poliomyelitis)							12
	Acute encephalitis(excluding JE and WNE)	1	1	1		34	8	308
	Cryptosporidiosis			1		1	1	4
	Creutzfeldt-Jakob disease					7	2	35
	Severe invasive streptococcal infections(TSLS)	2		4	2	25	7	221
	Acquired immunodeficiency syndrome (AIDS)	8	11	12	12	100	18	255
	Giardiasis		1	1		3		9
	Invasive <i>Haemophilus influenzae</i> disease	2	2	2	1	26	9	154
	Invasive meningococcal disease					1	1	15
	Invasive pneumococcal disease	7	5	7	7	113	37	867
	Varicella (limited to hospitalized case)		2	3	1	13	2	87
	Congenital rubella syndrome							1
	Syphilis	46	25	36	30	392	62	1,380
	Disseminated cryptococcosis			1		3	3	36
	Tetanus						1	9
	Vancomycin-resistant <i>S. aureus</i> infection							
	Vancomycin-resistant <i>Enterococcus</i> infection			1		1	2	21
	Pertussis	33	28	39	23	460	189	3,644
Rubella	41	34	28	32	315	74	1,033	
Measles	7	2	6	2	36	22	342	
MDRA infection					2		8	

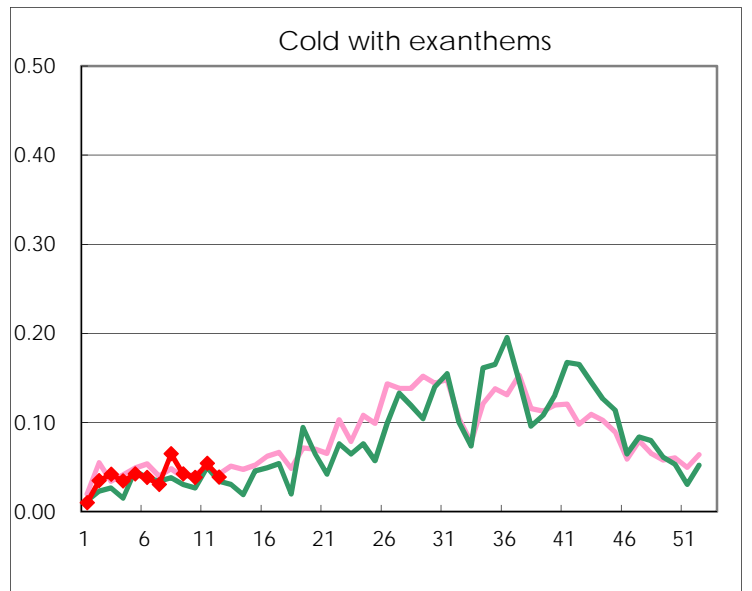
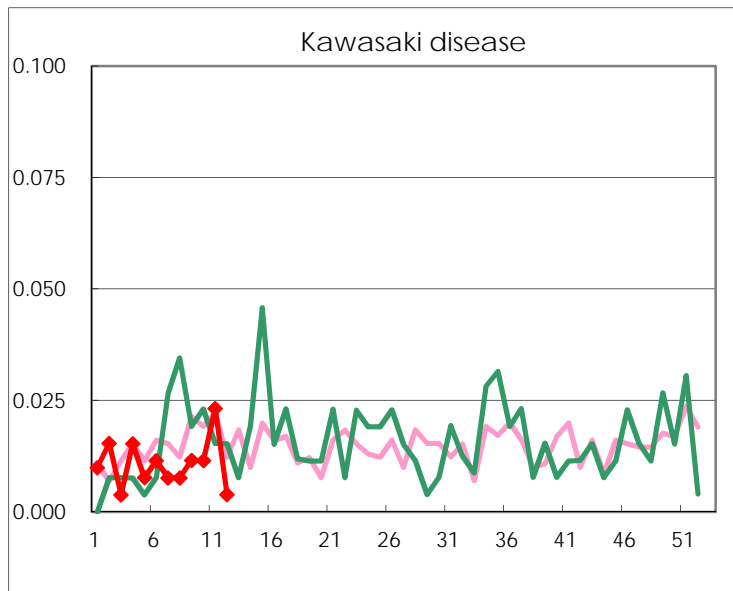
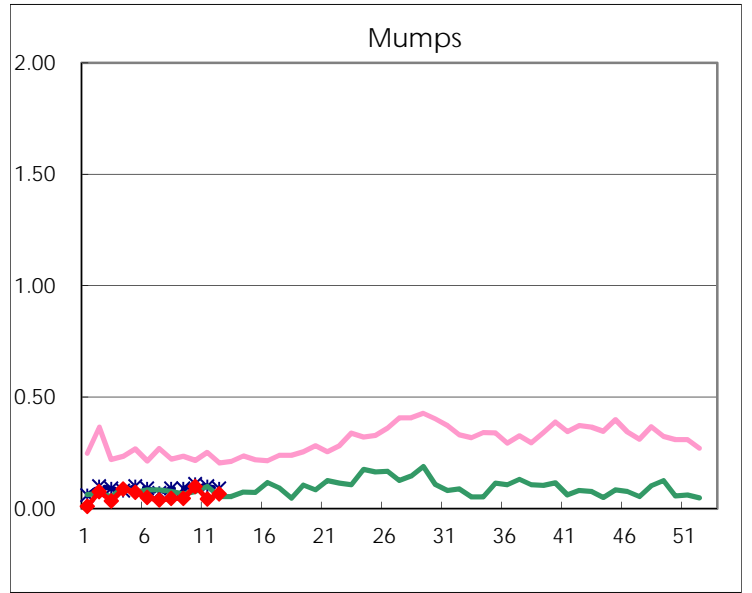
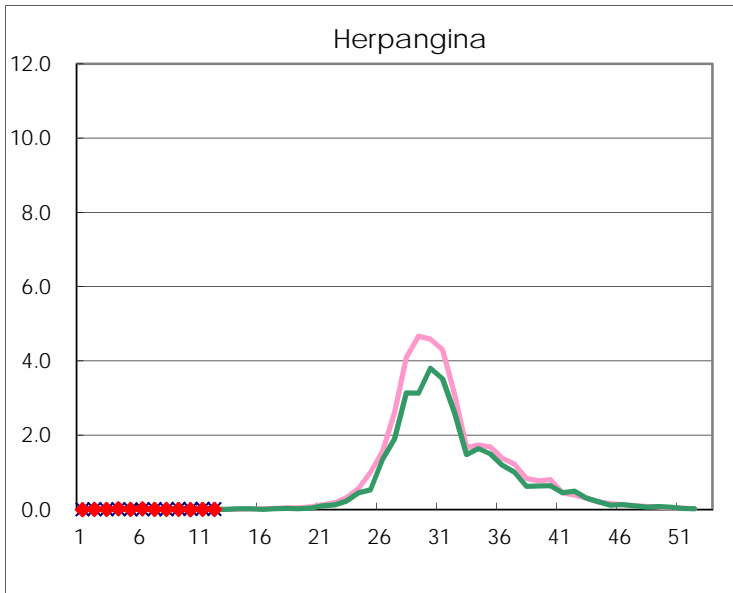
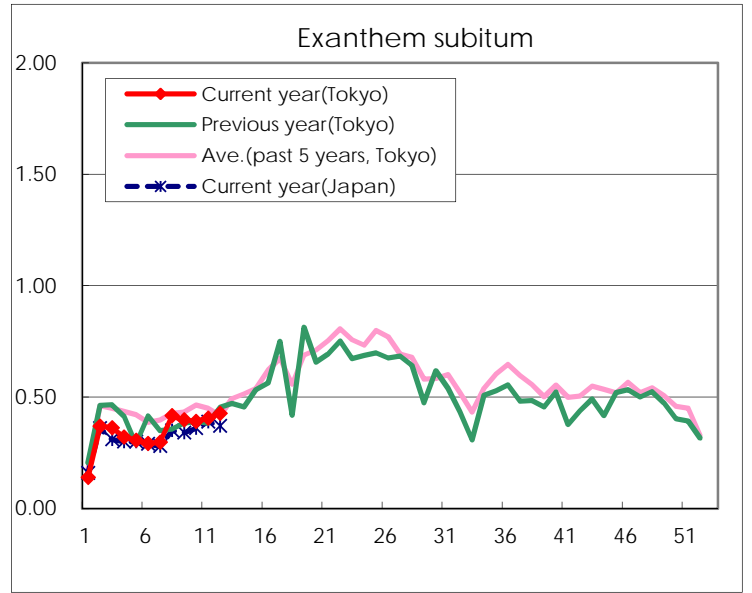
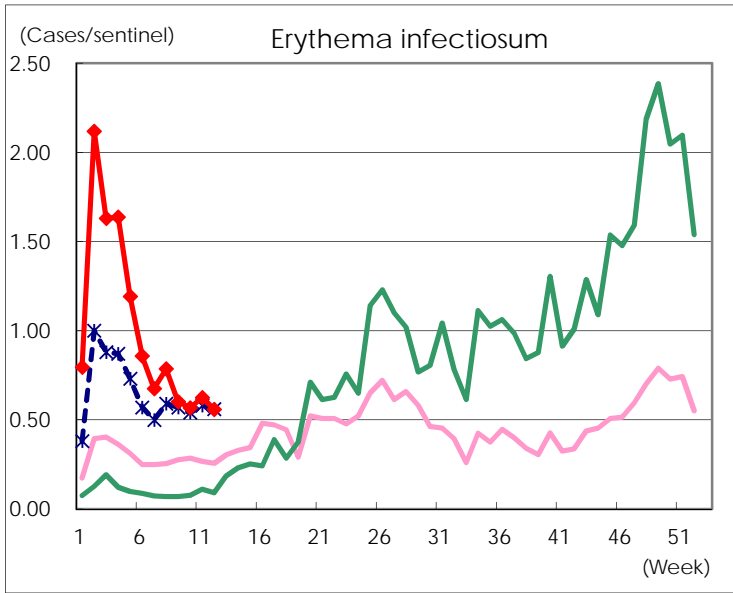
Number of patients with the diseases to be reported  
by the designated clinics and hospitals

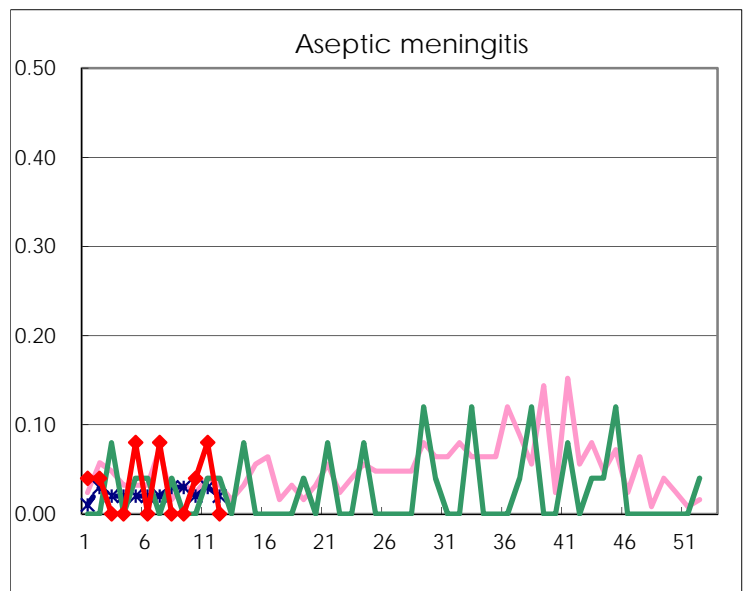
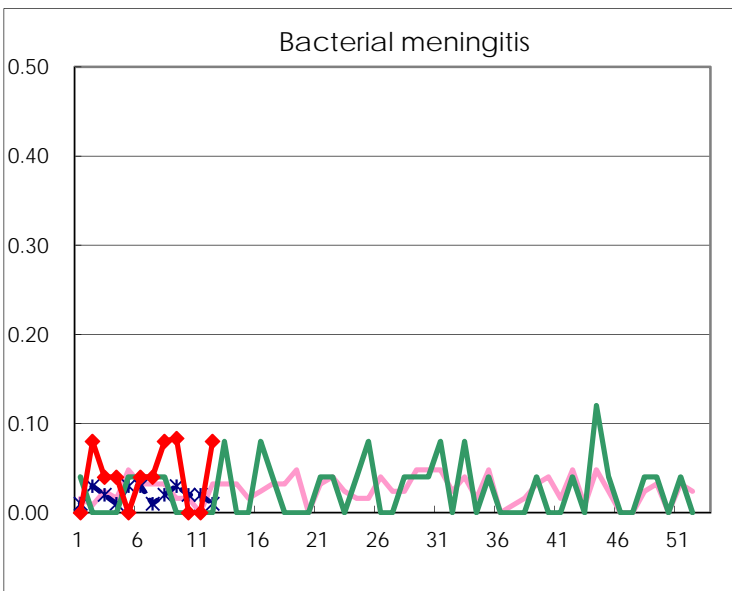
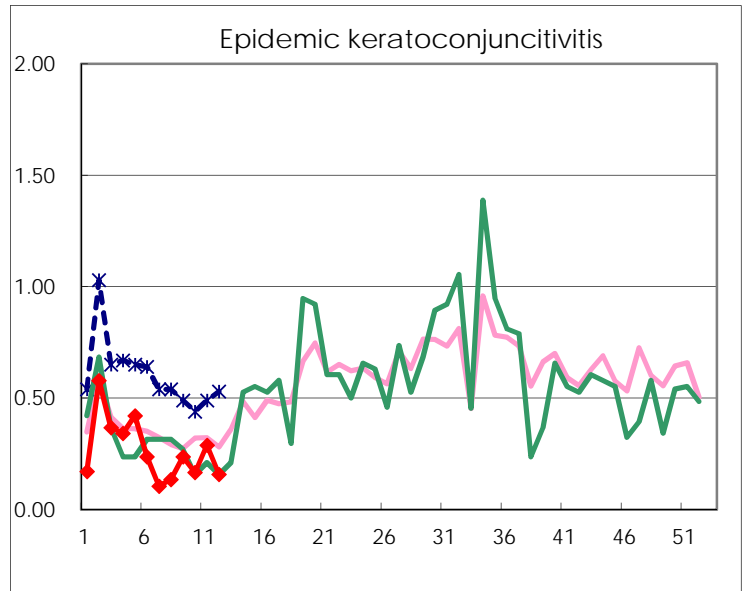
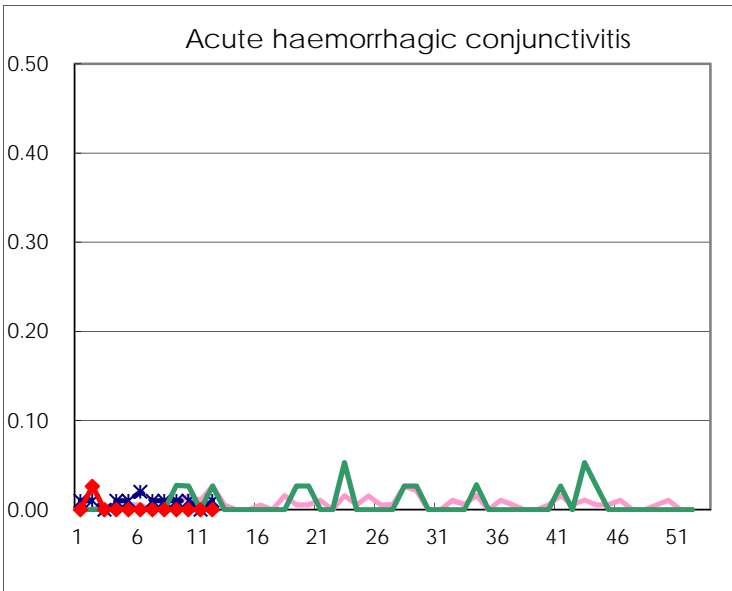
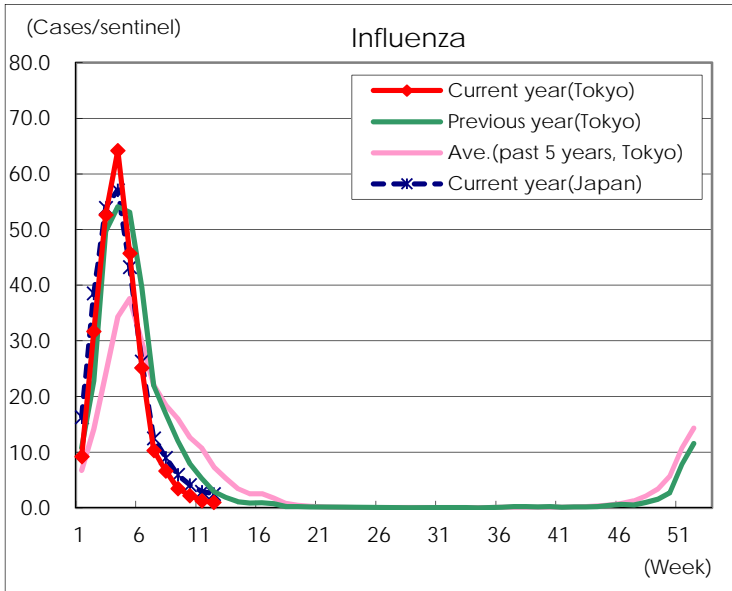
Diseases	Tokyo				
	9th	10th	11th	12th	/sentinel
Respiratory syncytial virus infection	73	54	81	101	0.39
Pharyngoconjunctival fever	43	37	59	49	0.19
Group A streptococcal pharyngitis	650	667	689	568	2.20
Infectious gastroenteritis	1,855	1,836	1,775	1,582	6.13
Chickenpox	101	83	113	128	0.50
Hand, foot, and mouth disease	17	12	30	22	0.09
Erythema infectiosum	156	148	162	144	0.56
Exanthem subitum	103	102	105	110	0.43
Herpangina	3		3	2	0.01
Mumps	12	26	11	17	0.07
Kawasaki disease	3	3	6	1	
Cold with exanthems	11	10	14	10	0.04
Influenza	1,434	920	525	402	0.98
Acute hemorrhagic conjunctivitis					
Epidemic keratoconjunctivitis	9	6	11	6	0.16
Bacterial meningitis	2			2	0.08
Aseptic meningitis		1	2		
<i>Mycoplasma pneumoniae</i>	4	2	2		
Chlamydial pneumonia (excluding psittacosis)			1	2	0.08
Infectious gastroenteritis (only by Rotavirus)	6	4	8	6	0.24
Influenza-Associated Hospitalizations	21	12	10	8	0.32

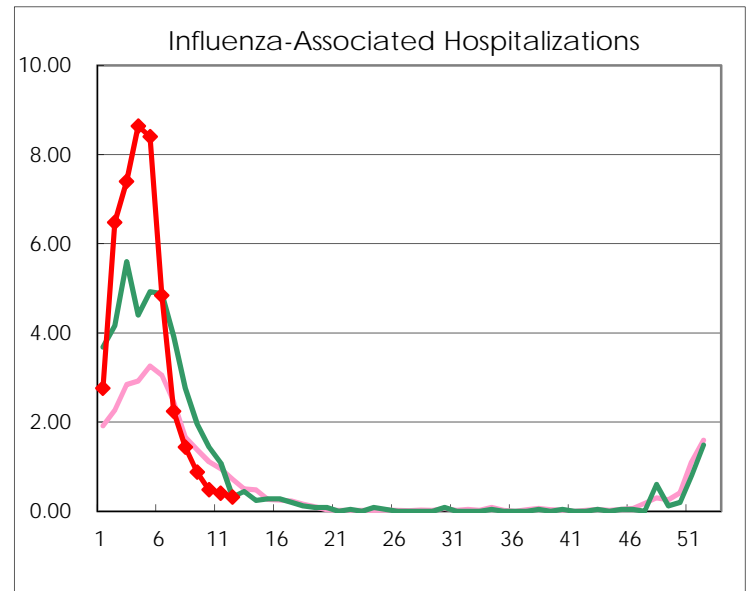
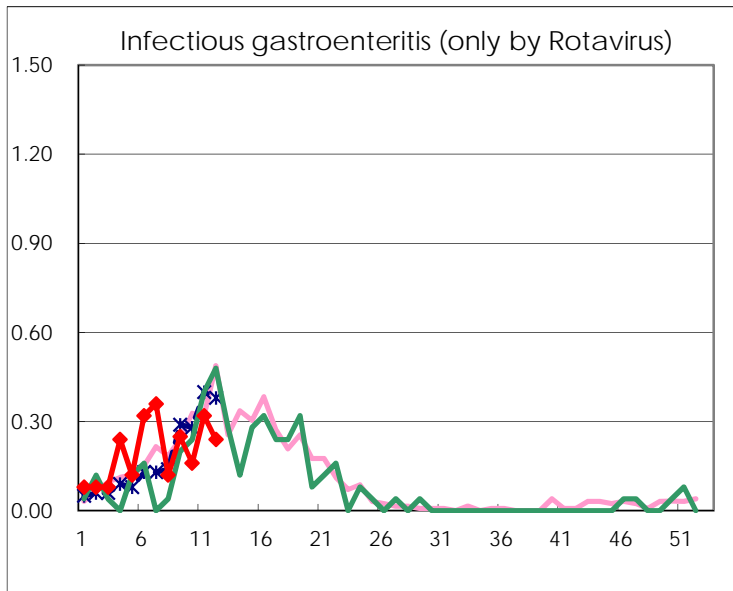
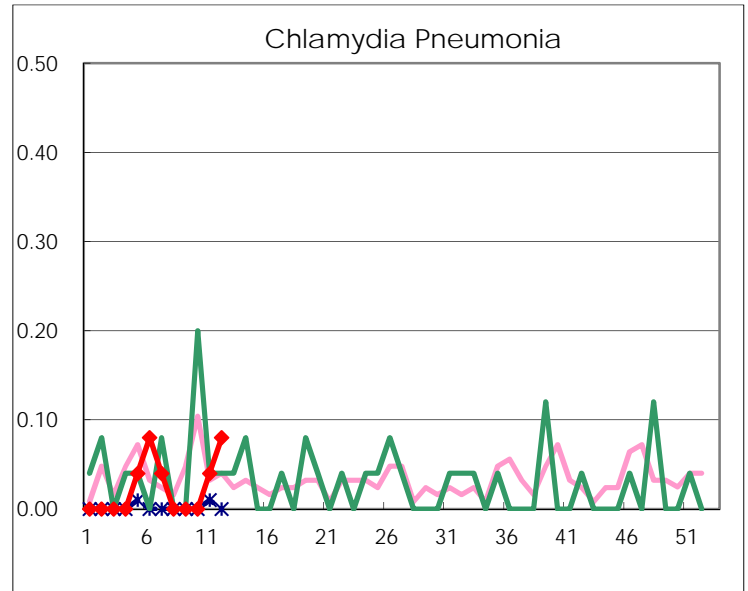
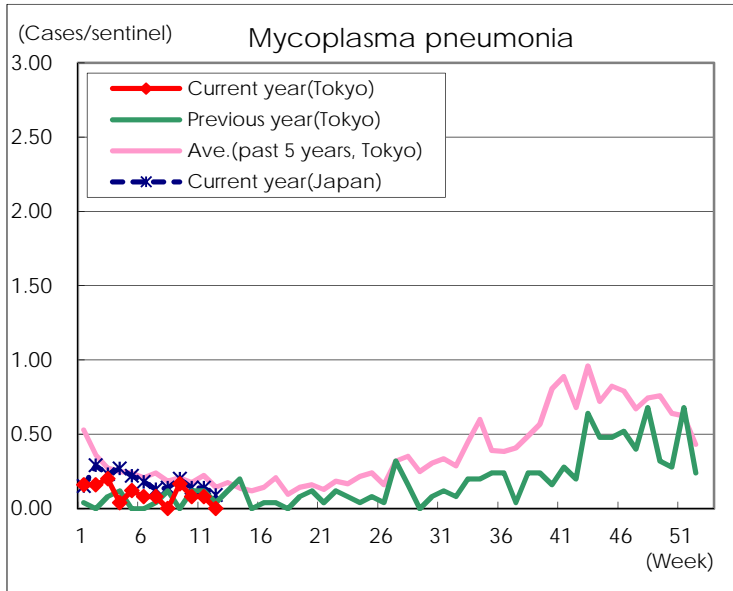
( Blank means 0. )

# Disease Trend Graph (weekly reported cases per sentinel in comparison)









Number of sentinel facilities for weekly reporting		
Types of sentinels	Number of sentinels	Sentinels having reported
Pediatric	264	258
Influenza	419	411
Ophthalmic	39	38
Specially-designated	25	25