

**4 April 2019 / Number 13**

## Surveillance System in Tokyo, Japan

The infectious diseases which all physicians must report

All physicians must report to health centers the incidence of the diseases which are shown at page one. Health centers electronically report the individual cases to Tokyo Metropolitan Infectious Disease Surveillance Center.

The infectious diseases required to be reported by the sentinels

The numbers of patients who visit the sentinel clinics or hospitals during a week are reported to health centers in Tokyo. And they electronically report the numbers to Tokyo Metropolitan Infectious Disease Surveillance Center. We have about 500 sentinel clinics and hospitals in Tokyo.

Tokyo Metropolitan Institute of Public Health

TEL:81-3-3363-3213 FAX:81-3-5332-7365

e-mail:[www@tokyo-eiken.go.jp](mailto:www@tokyo-eiken.go.jp)

URL:[idsc.tokyo-eiken.go.jp/](http://idsc.tokyo-eiken.go.jp/)

---

Number of patients with the diseases which all physicians must report

Category	Diseases	Tokyo					Japan	
		10th	11th	12th	13th	Cum 2019	13th	Cum 2019
I	Ebola hemorrhagic fever							
	Crimean-Congo hemorrhagic fever							
	Smallpox							
	South American hemorrhagic fever							
	Plague							
	Marburg disease							
	Lassa fever							
II	Acute poliomyelitis							
	Tuberculosis	60	57	55	56	695	365	4,797
	Diphtheria							
	Severe Acute Respiratory Syndrome(SARS)							
	Middle East Respiratory Syndrome (MERS)							
	Avian influenza H5N1							
	Avian influenza H7N9							
III	Cholera							
	Shigellosis	2	1			6		27
	Enterohemorrhagic Escherichia coli infection	1		1	2	30	28	256
	Typhoid fever					1		7
	Paratyphoid fever					1		4
IV	Hepatitis E	3	3	2	3	29	12	112
	West Nile fever							
	Hepatitis A	2	1	2	1	18	6	114
	Echinococcosis							2
	Yellow fever							
	Psittacosis	1		1		2	1	8
	Omsk hemorrhagic fever							
	Relapsing fever							
	Kyasanur forest disease							
	Q fever							
	Rabies							
	Coccidioidomycosis							1
	Monkeypox							
	Zika virus infection							
	Severe Fever with Thrombocytopenia Syndrome						2	6
	Hemorrhagic fever with renal syndrome							
	Western equine encephalitis							
	Tick-borne encephalitis							
	Anthrax							
	Chikungunya fever							2
	Scrub typhus(Tsutsugamushi disease)						1	41
	Dengue fever	2	2	1	2	26	5	71
	Eastern equine encephalitis							
	Avian influenza (excluding H5N1 and H7N9)							
	Nipah virus infection							
	Japanese spotted fever						2	7
	Japanese encephalitis							
	Hantavirus pulmonary syndrome							
	Herpes B virus infection							
	Glanders							
	Brucellosis						1	1
	Venezuelan equine encephalitis							
	Hendra virus infection							
	Epidemic typhus							
	Botulism							1
Malaria					2	1	9	
Tularemia								
Lyme disease								
Lyssavirus infection(excluding rabies)								
Rift valley fever								
Melioidosis								
Legionellosis	1	1	2	2	32	11	327	
Leptospirosis		1			1		1	
Rocky mountain spotted fever								

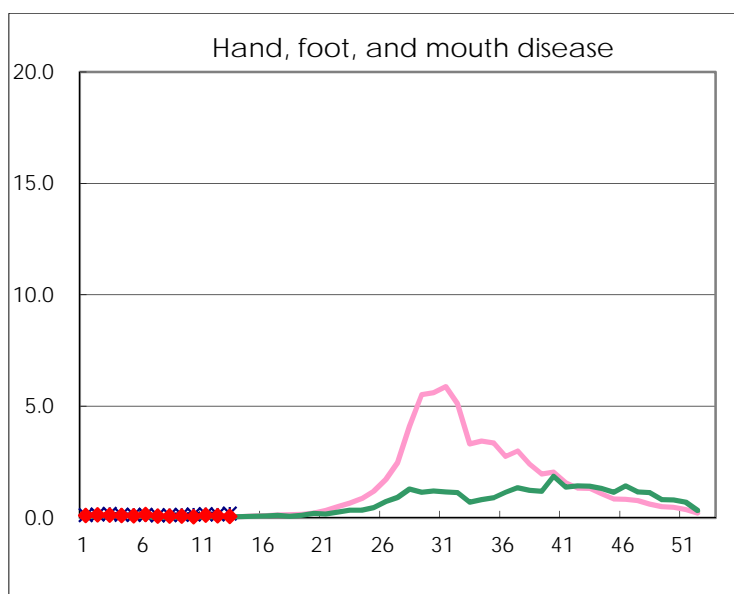
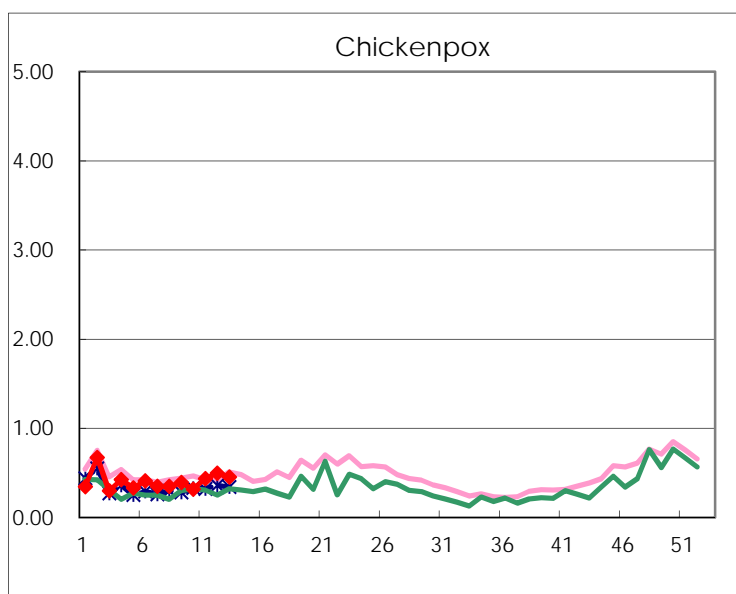
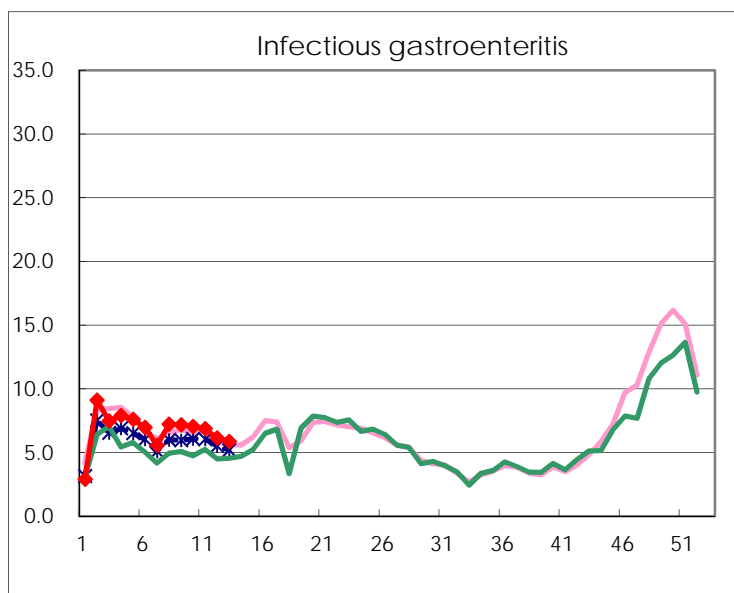
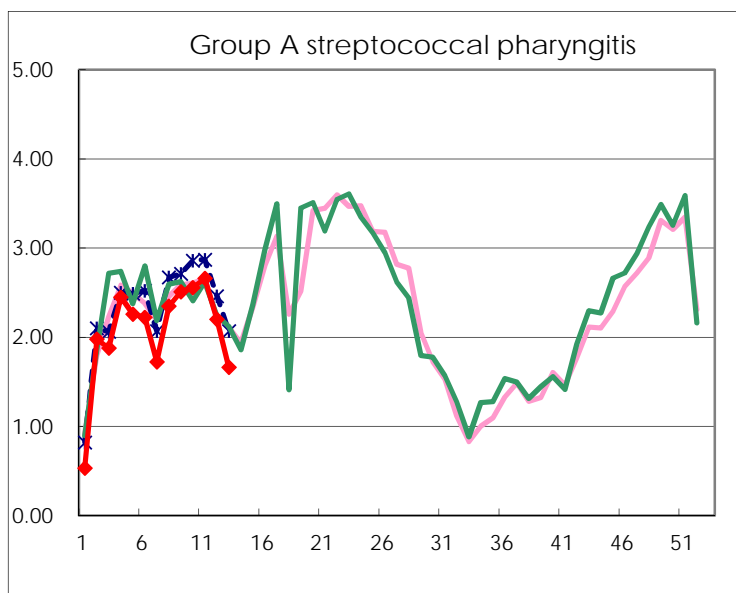
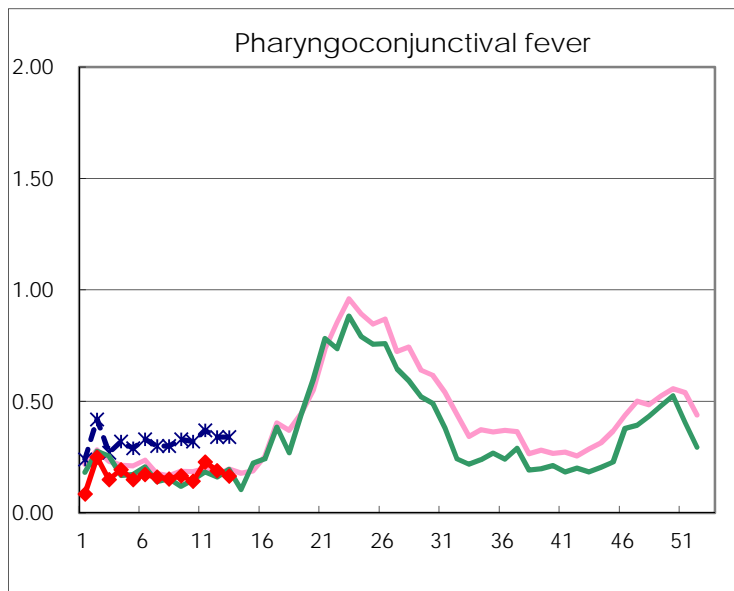
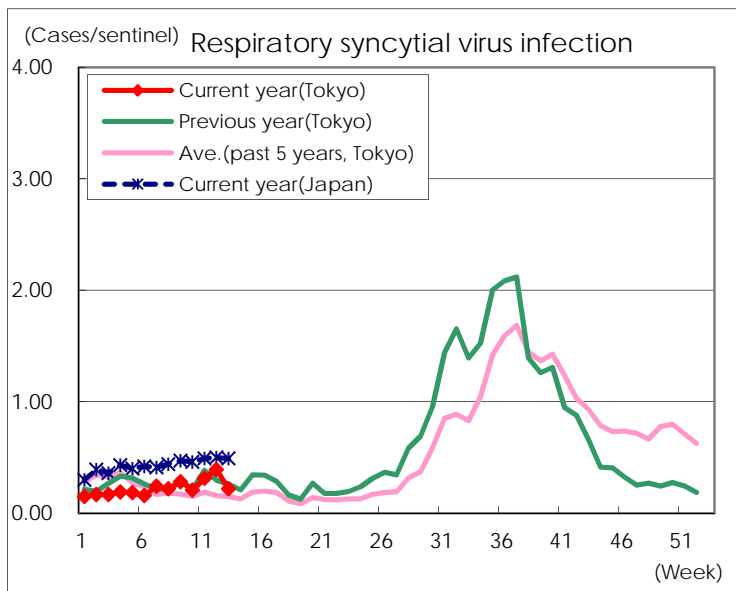
Category	Diseases	Tokyo					Japan	
		10th	11th	12th	13th	Cum 2019	13th	Cum 2019
V	Amebiasis	6	6	2	3	45	12	208
	Viral hepatitis(excluding hepatitis A and E)	2	6	3	3	26	3	82
	CRE infection	5	2	5	5	52	23	458
	Acute Flaccid Paralysis (excluding Acute poliomyelitis)							13
	Acute encephalitis(excluding JE and WNE)	1	1			35	5	319
	Cryptosporidiosis		1			1		4
	Creutzfeldt-Jakob disease					7	1	36
	Severe invasive streptococcal infections(TSLs)		4	2	1	26	8	236
	Acquired immunodeficiency syndrome (AIDS)	11	12	12	6	106	21	280
	Giardiasis	1	1			3		9
	Invasive <i>Haemophilus influenzae</i> disease	2	2	1	1	27	6	163
	Invasive meningococcal disease					1		15
	Invasive pneumococcal disease	5	7	7	5	118	47	933
	Varicella (limited to hospitalized case)	2	3	1	2	15	10	98
	Congenital rubella syndrome							1
	Syphilis	25	36	30	30	422	80	1,498
	Disseminated cryptococcosis		1		2	5		37
	Tetanus				1	1	1	12
	Vancomycin-resistant <i>S. aureus</i> infection							
	Vancomycin-resistant <i>Enterococcus</i> infection		1			1	1	22
	Pertussis	28	39	23	41	501	242	3,987
	Rubella	34	28	33	25	341	65	1,112
Measles	2	6	2	6	42	22	378	
MDRA infection					2	2	10	

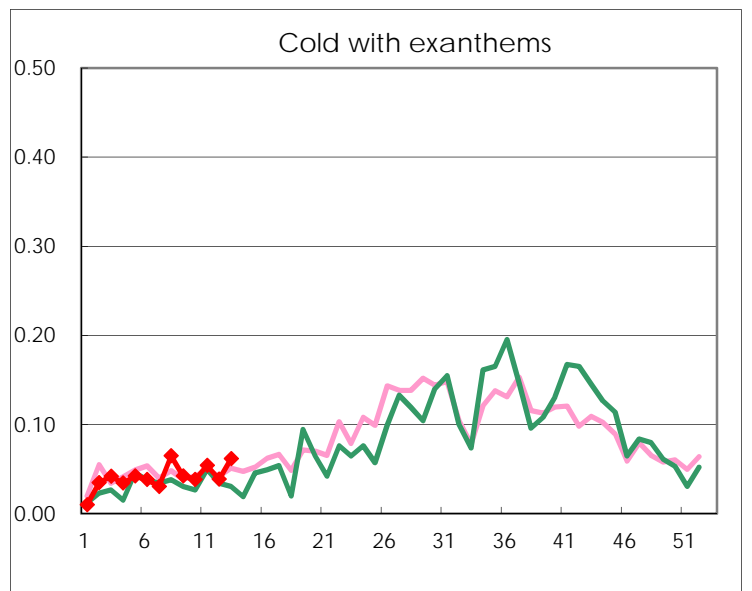
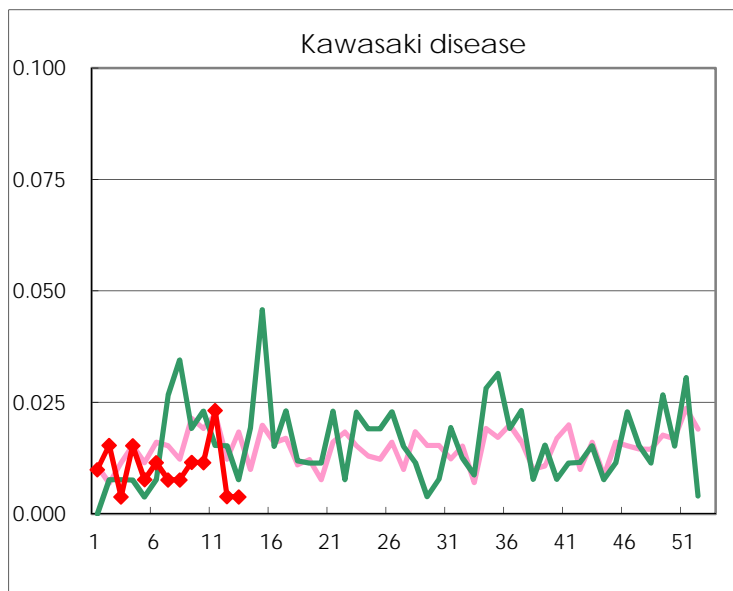
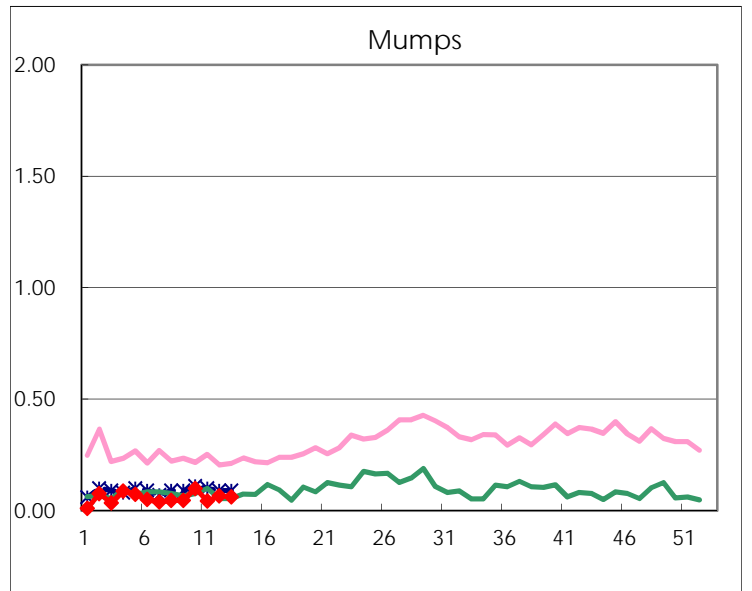
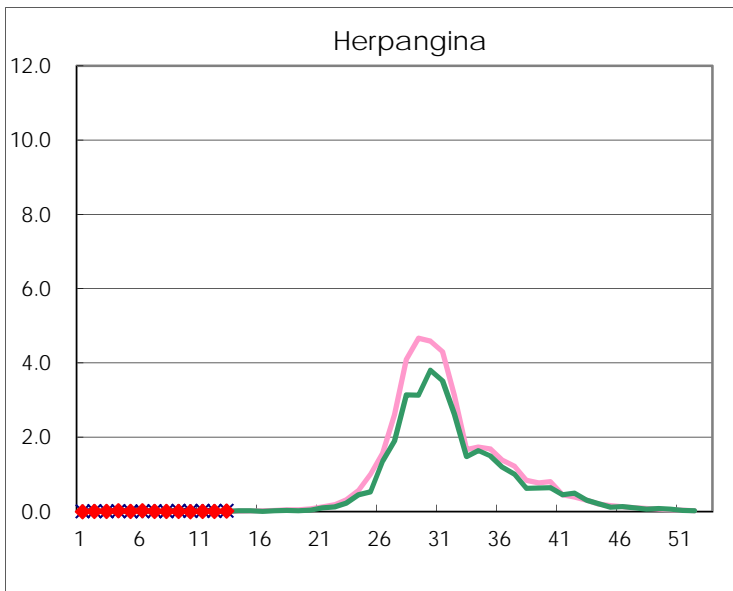
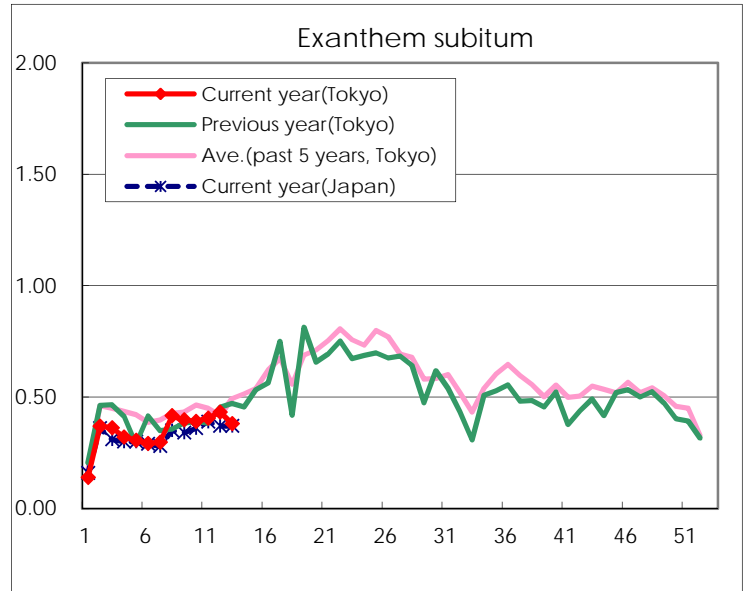
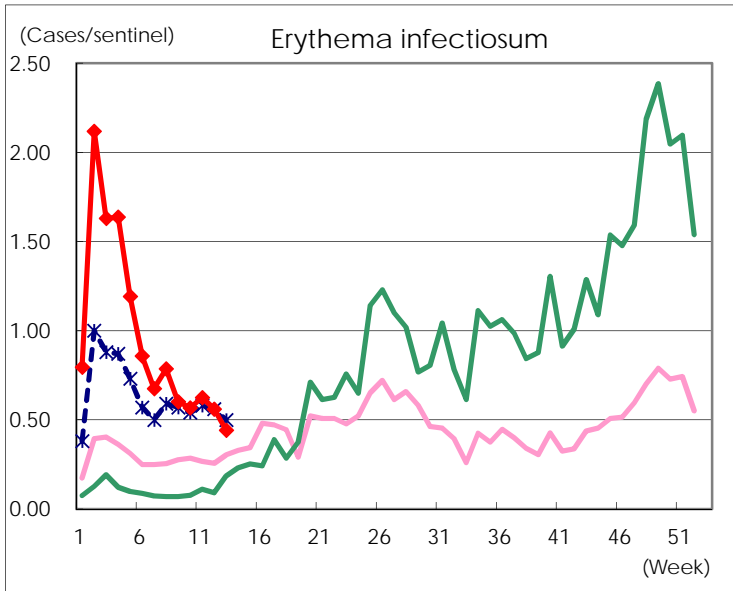
Number of patients with the diseases to be reported  
by the designated clinics and hospitals

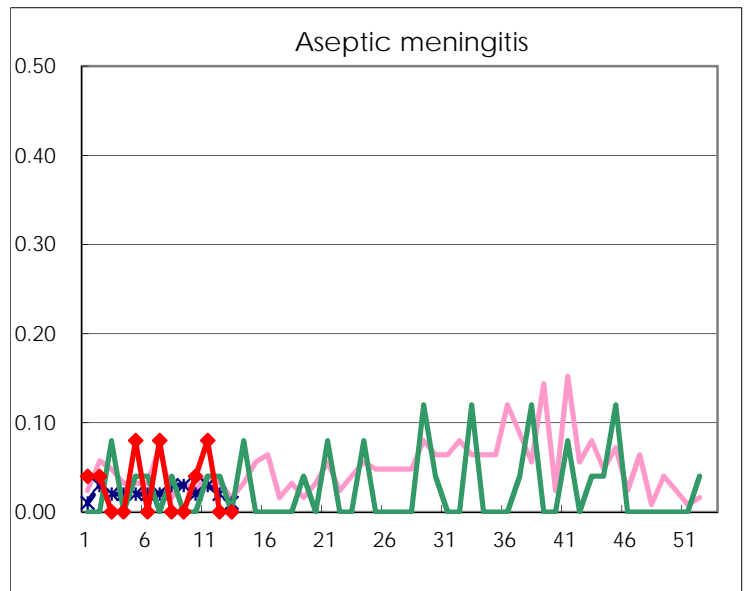
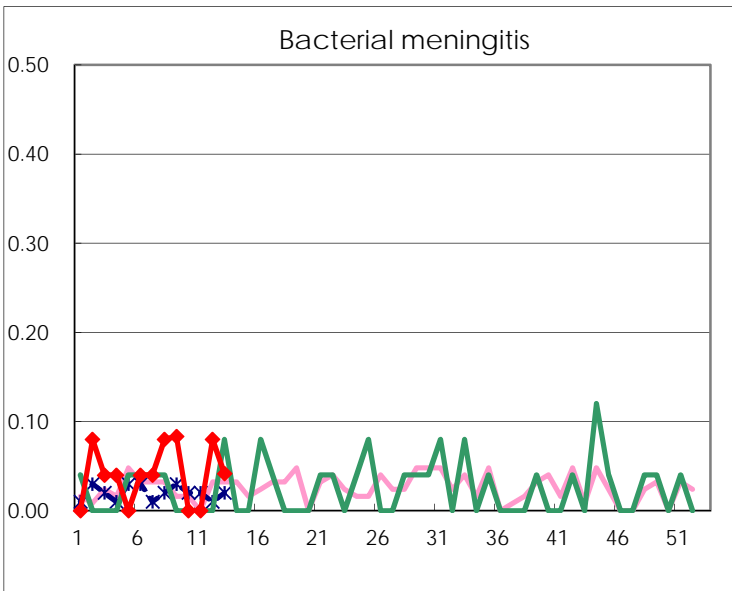
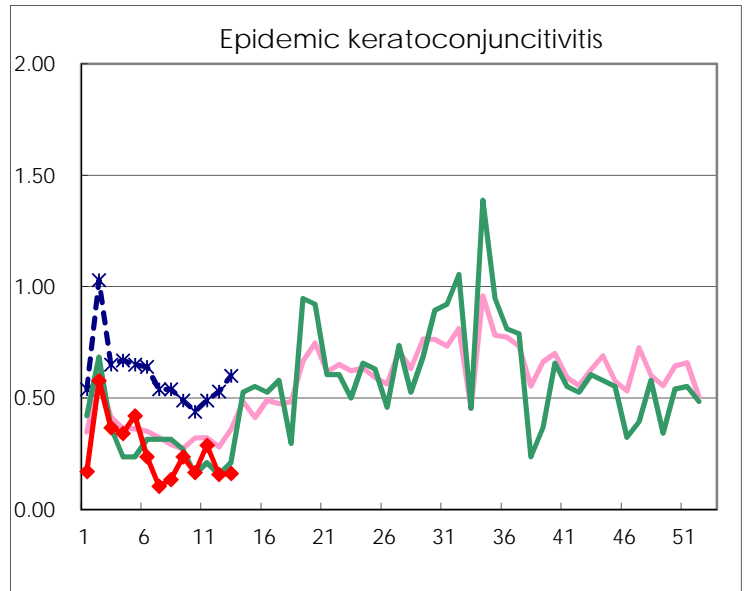
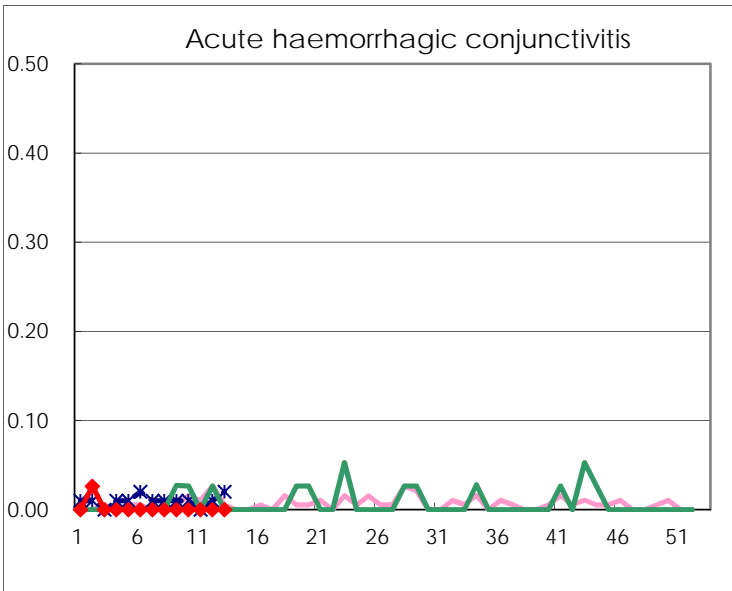
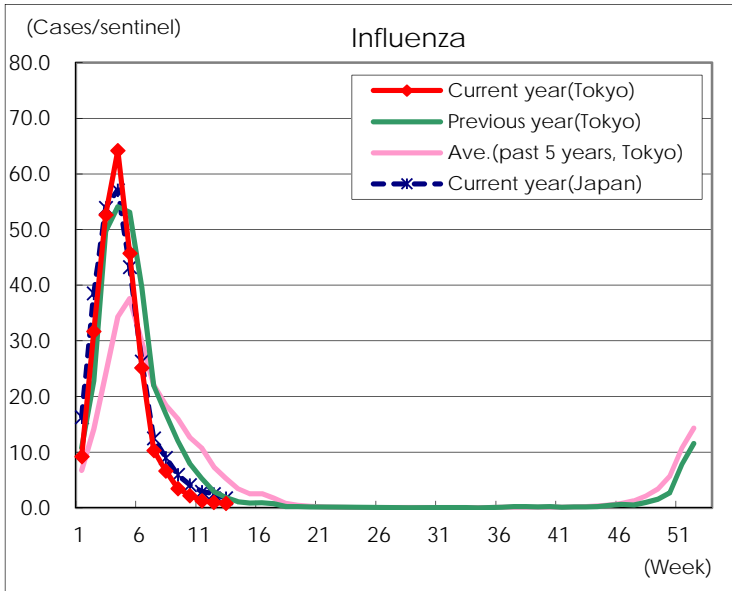
Diseases	Tokyo				
	10th	11th	12th	13th	/sentinel
Respiratory syncytial virus infection	54	81	101	57	0.22
Pharyngoconjunctival fever	37	59	49	43	0.17
Group A streptococcal pharyngitis	667	689	570	432	1.66
Infectious gastroenteritis	1,836	1,775	1,591	1,526	5.87
Chickenpox	83	113	128	118	0.45
Hand, foot, and mouth disease	12	30	22	16	0.06
Erythema infectiosum	148	162	145	115	0.44
Exanthem subitum	102	105	112	99	0.38
Herpangina		3	2	4	0.02
Mumps	26	11	17	16	0.06
Kawasaki disease	3	6	1	1	
Cold with exanthems	10	14	10	16	0.06
Influenza	920	525	406	342	0.83
Acute hemorrhagic conjunctivitis					
Epidemic keratoconjunctivitis	6	11	6	6	0.16
Bacterial meningitis			2	1	0.04
Aseptic meningitis	1	2			
<i>Mycoplasma pneumoniae</i>	2	2		1	0.04
Chlamydial pneumonia (excluding psittacosis)		1	2	2	0.08
Infectious gastroenteritis (only by Rotavirus)	4	8	7	6	0.25
Influenza-Associated Hospitalizations	12	10	8	10	0.43

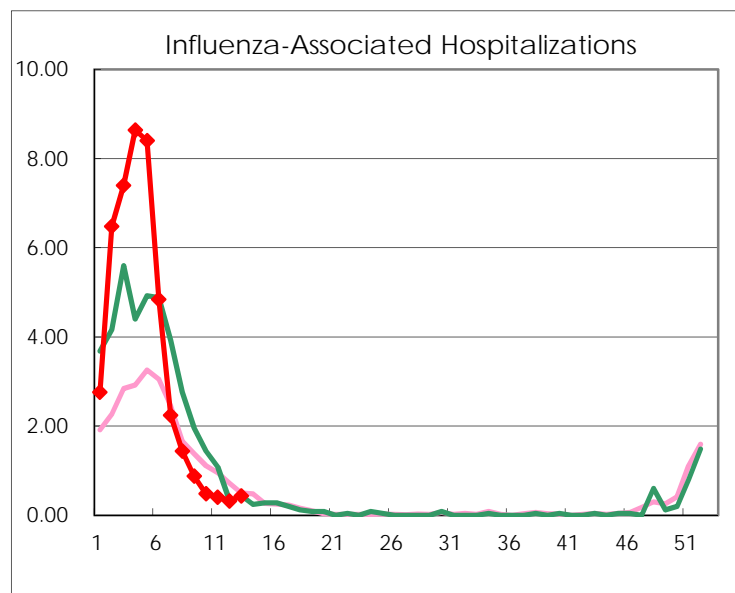
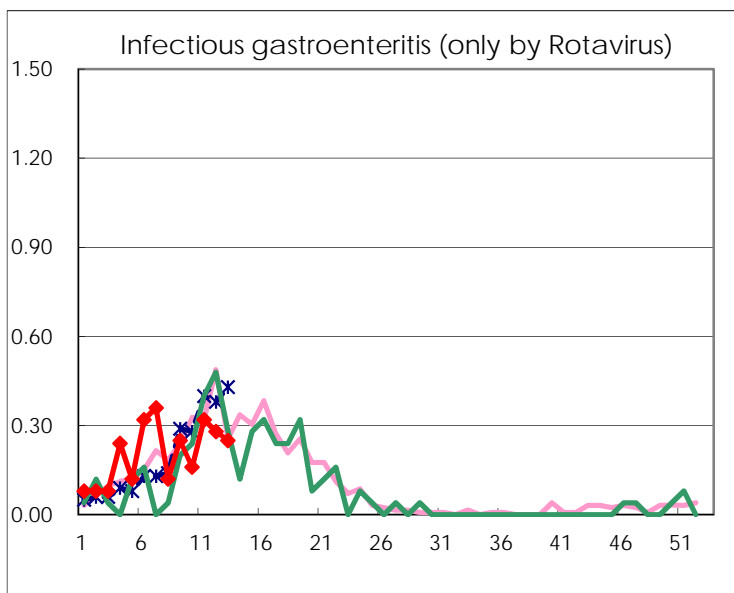
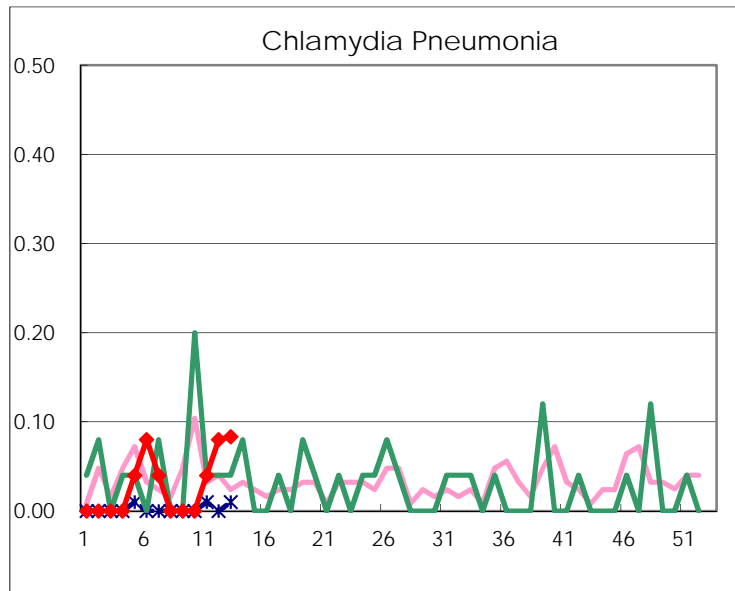
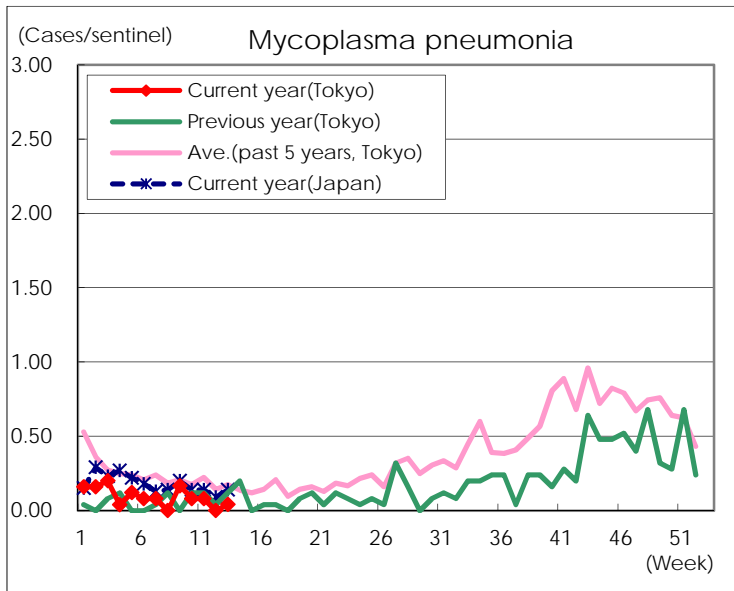
( Blank means 0. )

# Disease Trend Graph (weekly reported cases per sentinel in comparison)









Number of sentinel facilities for weekly reporting		
Types of sentinels	Number of sentinels	Sentinels having reported
Pediatric	264	260
Influenza	419	412
Ophthalmic	39	37
Specially-designated	25	24