

25 April 2019 / Number 16

Surveillance System in Tokyo, Japan

The infectious diseases which all physicians must report

All physicians must report to health centers the incidence of the diseases which are shown at page one. Health centers electronically report the individual cases to Tokyo Metropolitan Infectious Disease Surveillance Center.

The infectious diseases required to be reported by the sentinels

The numbers of patients who visit the sentinel clinics or hospitals during a week are reported to health centers in Tokyo. And they electronically report the numbers to Tokyo Metropolitan Infectious Disease Surveillance Center. We have about 500 sentinel clinics and hospitals in Tokyo.

Tokyo Metropolitan Institute of Public Health

TEL:81-3-3363-3213 FAX:81-3-5332-7365

e-mail:www@tokyo-eiken.go.jp

URL:idsc.tokyo-eiken.go.jp/

Number of patients with the diseases which all physicians must report

Category	Diseases	Tokyo					Japan	
		13th	14th	15th	16th	Cum 2019	16th	Cum 2019
I	Ebola hemorrhagic fever							
	Crimean-Congo hemorrhagic fever							
	Smallpox							
	South American hemorrhagic fever							
	Plague							
	Marburg disease							
	Lassa fever							
II	Acute poliomyelitis							
	Tuberculosis	67	66	72	64	905	367	6,155
	Diphtheria							
	Severe Acute Respiratory Syndrome(SARS)							
	Middle East Respiratory Syndrome (MERS)							
	Avian influenza H5N1							
	Avian influenza H7N9							
III	Cholera	1				1		1
	Shigellosis				1	7	2	30
	Enterohemorrhagic Escherichia coli infection	2	6	2	3	41	27	317
	Typhoid fever					1		9
	Paratyphoid fever			1		2	1	7
IV	Hepatitis E	3	1	1	7	38	16	146
	West Nile fever							
	Hepatitis A	1	2	3	5	28	8	139
	Echinococcosis							3
	Yellow fever							
	Psittacosis					2	1	9
	Omsk hemorrhagic fever							
	Relapsing fever							
	Kyasanur forest disease							
	Q fever							
	Rabies							
	Coccidioidomycosis							1
	Monkeypox							
	Zika virus infection							
	Severe Fever with Thrombocytopenia Syndrome						1	9
	Hemorrhagic fever with renal syndrome							
	Western equine encephalitis							
	Tick-borne encephalitis							
	Anthrax							
	Chikungunya fever							2
	Scrub typhus(Tsutsugamushi disease)						1	46
	Dengue fever	2	2	1		29	6	93
	Eastern equine encephalitis							
	Avian influenza (excluding H5N1 and H7N9)							
	Nipah virus infection							
	Japanese spotted fever							11
	Japanese encephalitis							
	Hantavirus pulmonary syndrome							
	Herpes B virus infection							
	Glanders							
	Brucellosis							1
	Venezuelan equine encephalitis							
	Hendra virus infection							
	Epidemic typhus							
	Botulism							1
Malaria					2	1	11	
Tularemia								
Lyme disease								
Lyssavirus infection(excluding rabies)								
Rift valley fever								
Melioidosis								
Legionellosis	2	3	4	3	41	15	389	
Leptospirosis					1		2	
Rocky mountain spotted fever								

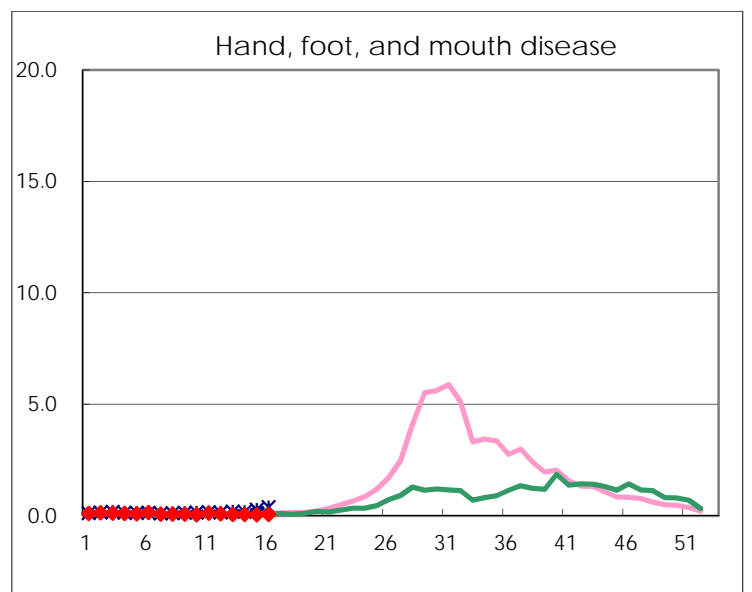
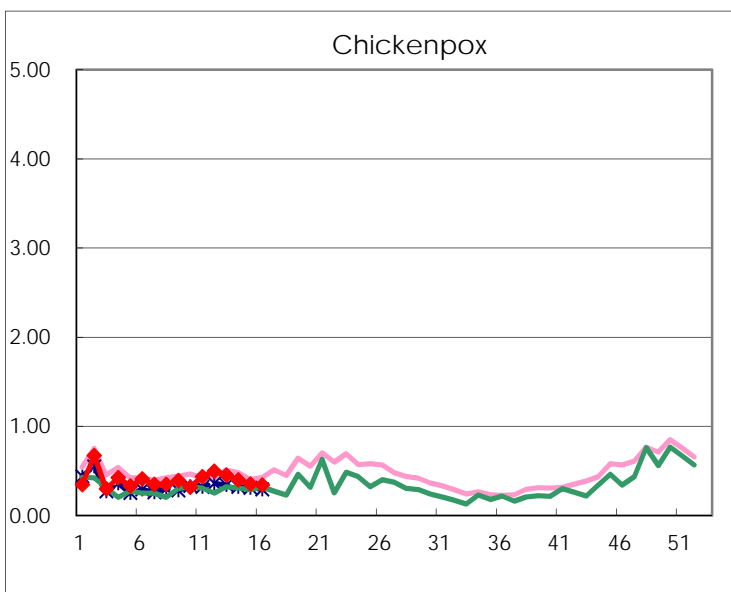
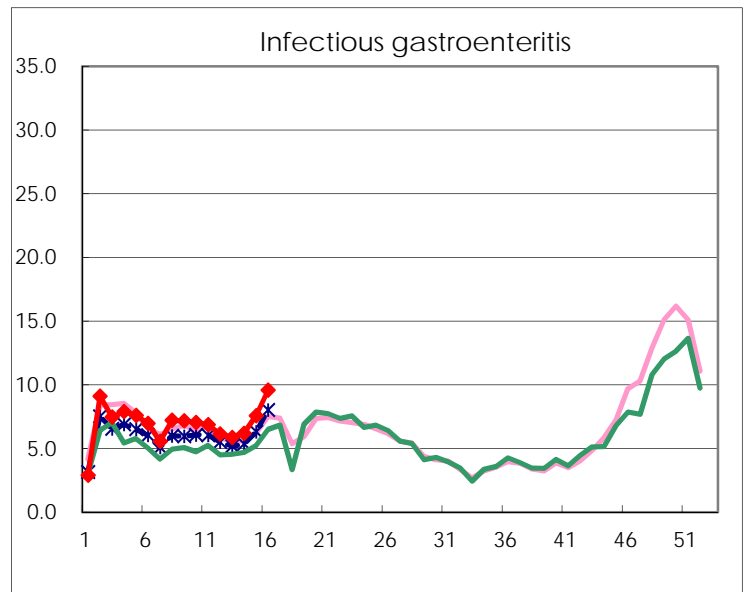
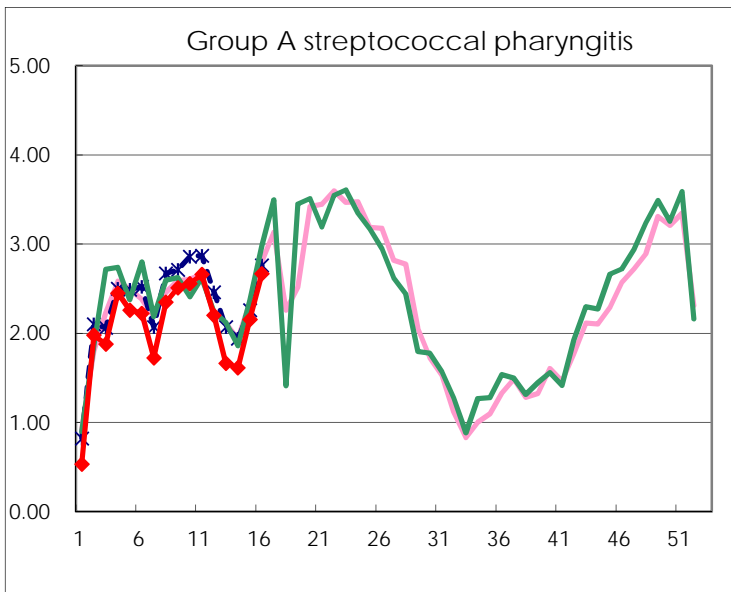
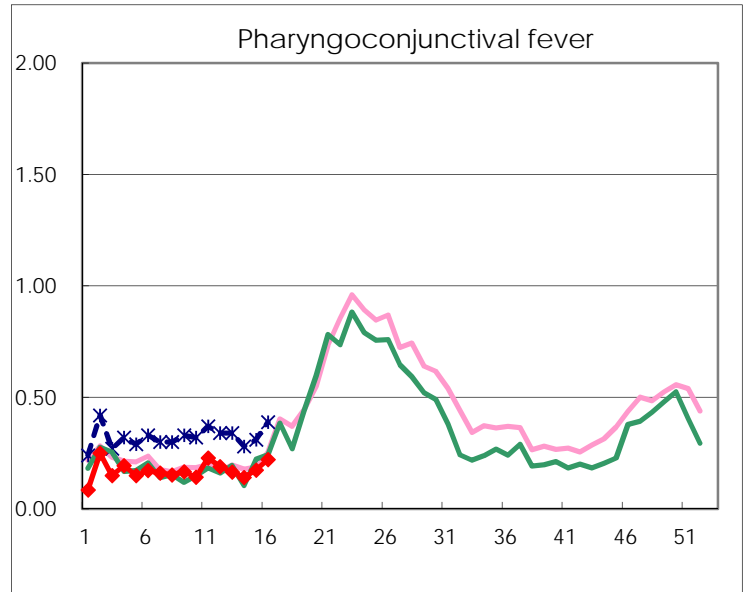
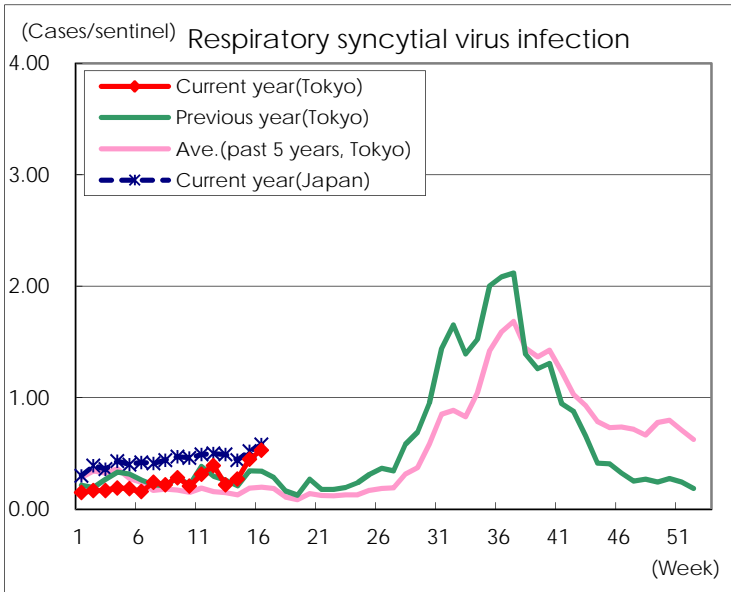
Category	Diseases	Tokyo					Japan	
		13th	14th	15th	16th	Cum 2019	16th	Cum 2019
V	Amebiasis	3	3	8	1	57	14	269
	Viral hepatitis(excluding hepatitis A and E)	3				26	2	95
	CRE infection	5	4	3	5	64	25	564
	Acute Flaccid Paralysis (excluding Acute poliomyelitis)					1		16
	Acute encephalitis(excluding JE and WNE)		1	1	2	39	5	350
	Cryptosporidiosis		1			2		5
	Creutzfeldt-Jakob disease		1			8	1	47
	Severe invasive streptococcal infections(TSLs)	1		4	3	33	11	287
	Acquired immunodeficiency syndrome (AIDS)	6	12	7	9	134	12	357
	Giardiasis					3		11
	Invasive <i>Haemophilus influenzae</i> disease	1	1	2		30	5	192
	Invasive meningococcal disease					1	1	18
	Invasive pneumococcal disease	5	5	8	13	144	68	1,189
	Varicella (limited to hospitalized case)	2	2			17	6	121
	Congenital rubella syndrome							1
	Syphilis	30	28	29	34	513	85	1,899
	Disseminated cryptococcosis	2		1		6	3	44
	Tetanus	1				1	2	16
	Vancomycin-resistant <i>S. aureus</i> infection							
	Vancomycin-resistant <i>Enterococcus</i> infection		1		1	3	1	27
	Pertussis	42	19	23	29	573	198	4,883
Rubella	29	29	35	20	429	46	1,331	
Measles	6	2	4	5	53	19	422	
MDRA infection					2		12	

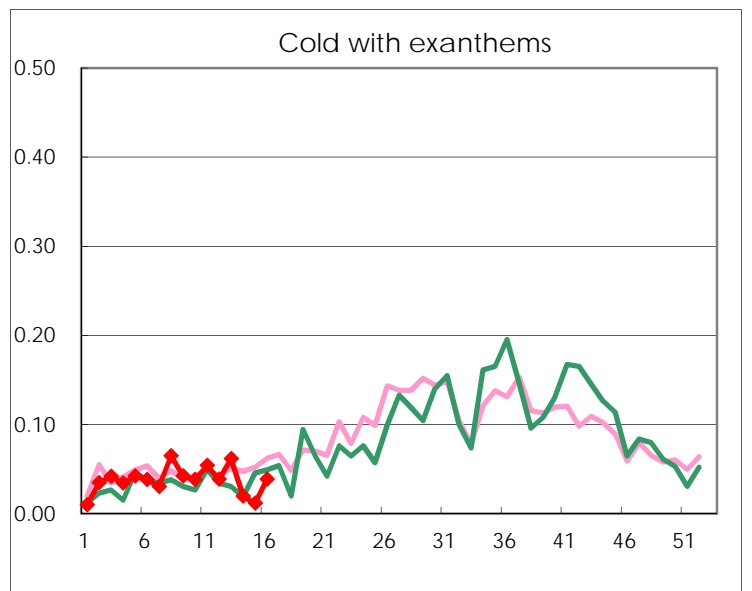
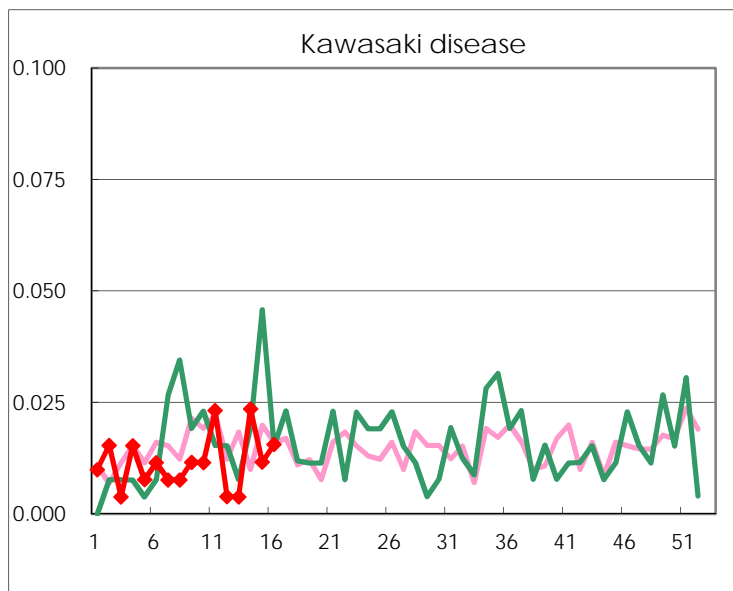
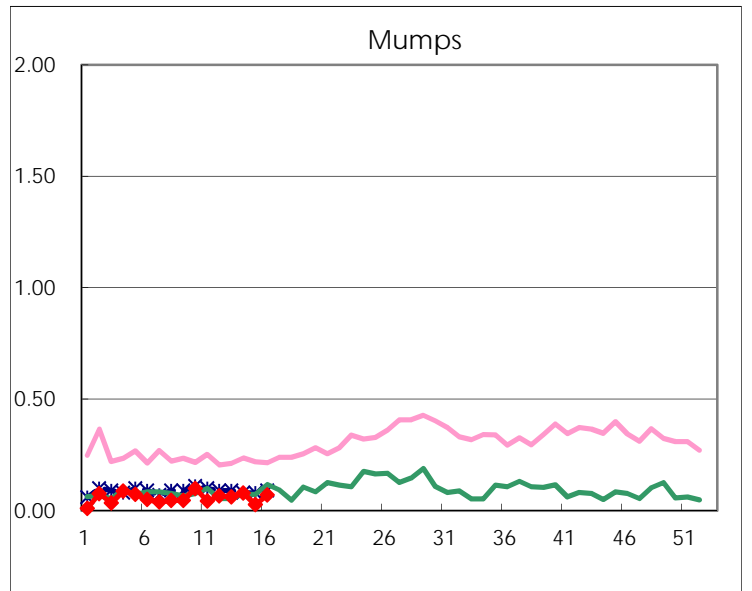
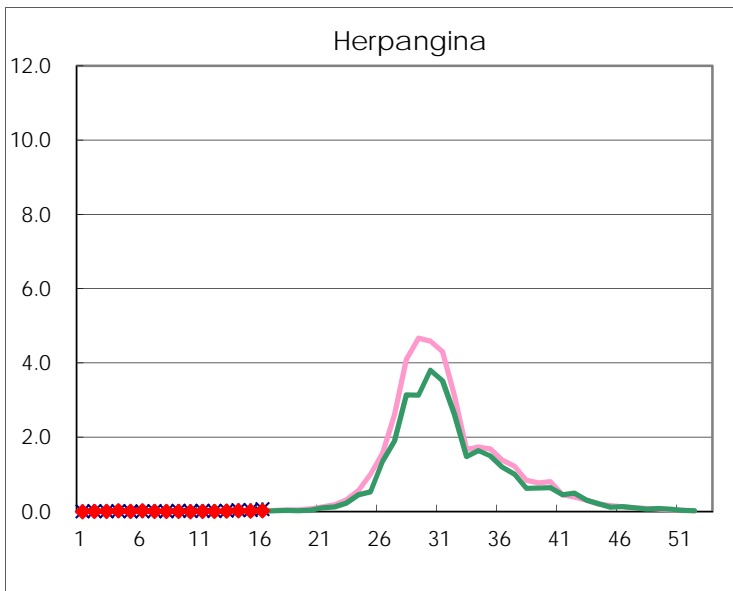
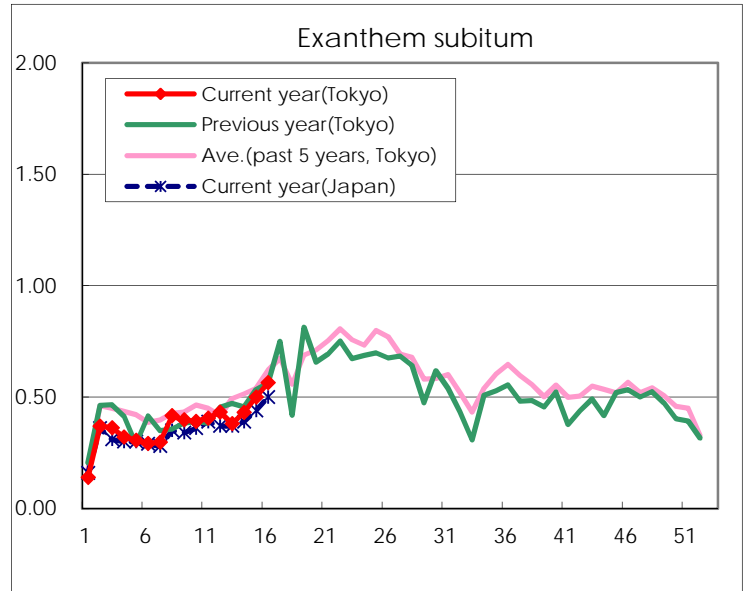
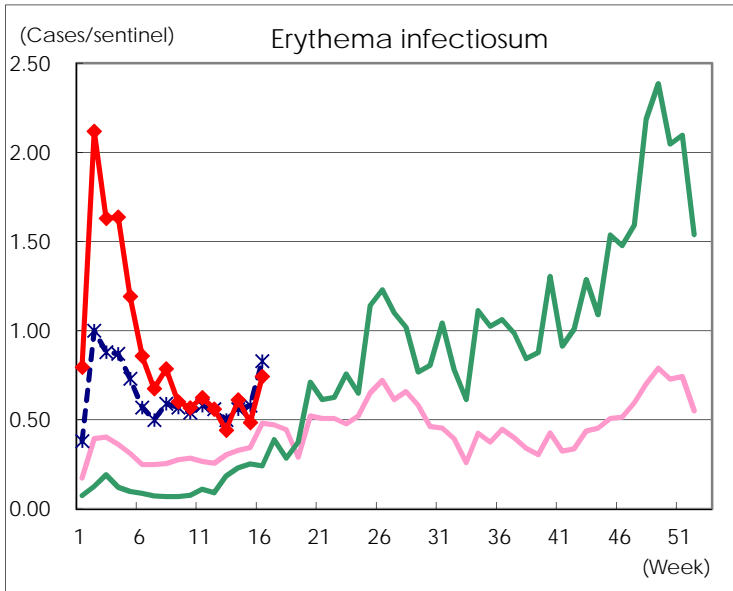
Number of patients with the diseases to be reported
by the designated clinics and hospitals

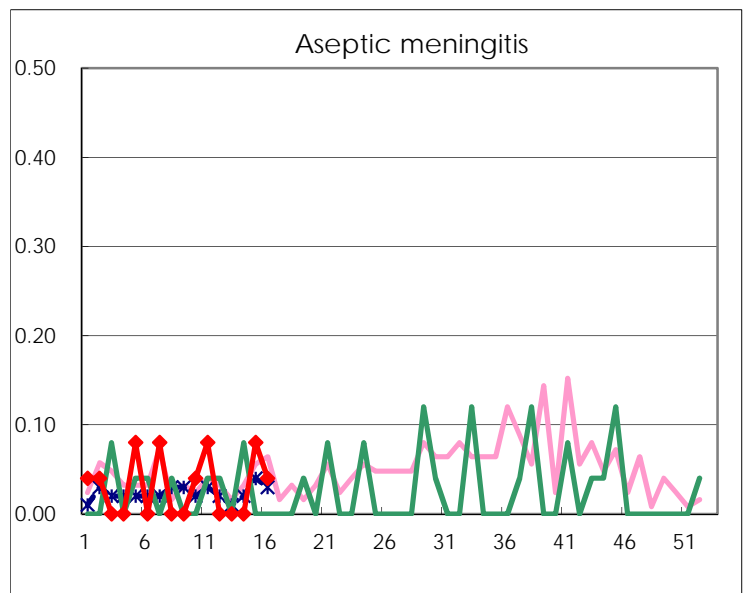
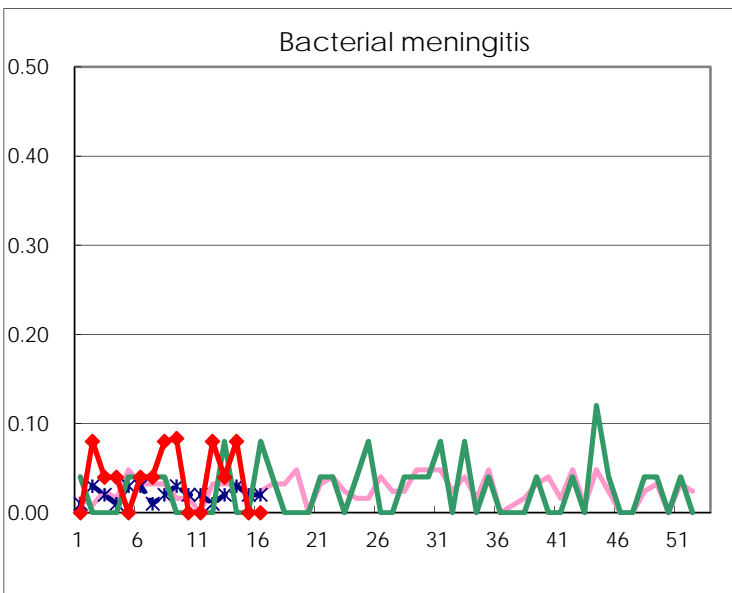
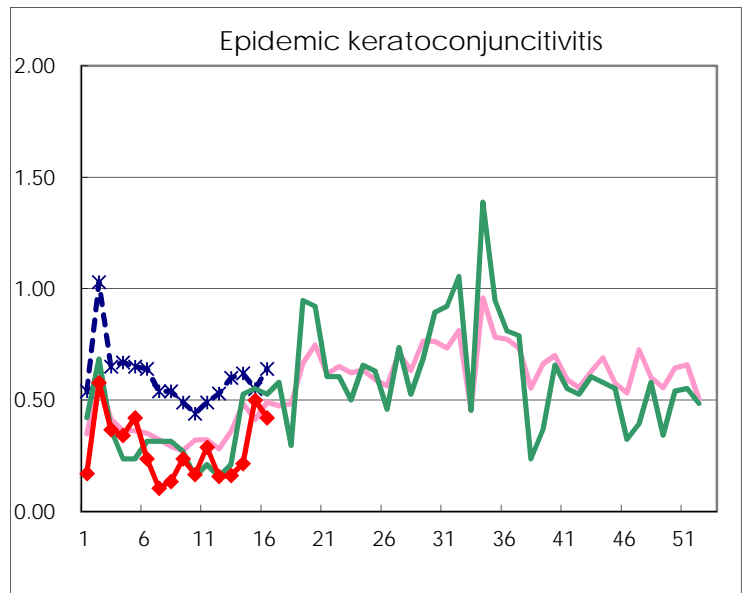
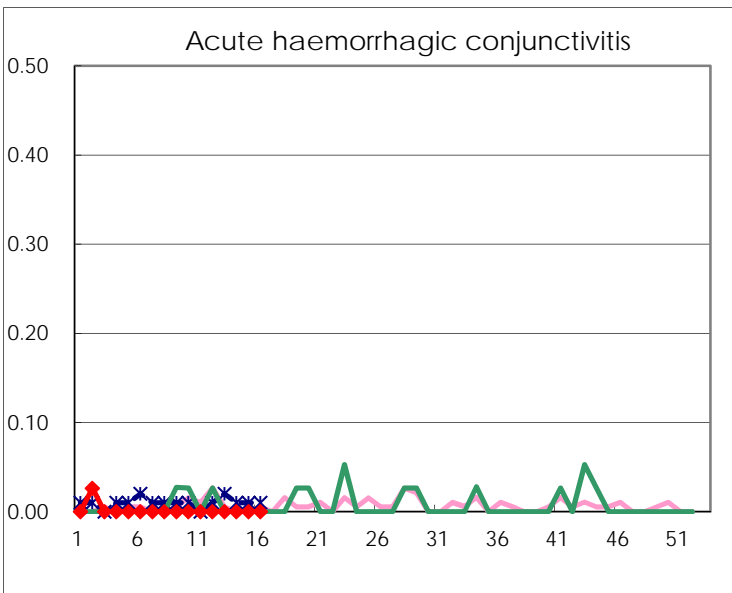
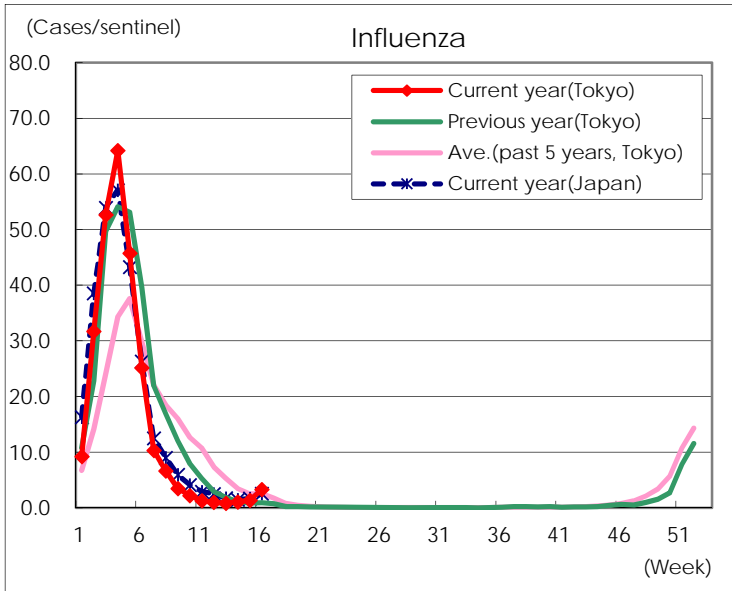
Diseases	Tokyo				
	13th	14th	15th	16th	/sentinel
Respiratory syncytial virus infection	57	69	116	136	0.53
Pharyngoconjunctival fever	43	36	45	57	0.22
Group A streptococcal pharyngitis	432	411	556	686	2.67
Infectious gastroenteritis	1,526	1,578	1,952	2,461	9.58
Chickenpox	118	102	91	88	0.34
Hand, foot, and mouth disease	16	15	12	16	0.06
Erythema infectiosum	115	156	125	191	0.74
Exanthem subitum	99	110	129	145	0.56
Herpangina	4	6	5	7	0.03
Mumps	16	20	7	18	0.07
Kawasaki disease	1	6	3	4	0.02
Cold with exanthems	16	5	3	10	0.04
Influenza	345	439	555	1,339	3.27
Acute hemorrhagic conjunctivitis					
Epidemic keratoconjunctivitis	6	8	19	16	0.42
Bacterial meningitis	1	2			
Aseptic meningitis			2	1	0.04
<i>Mycoplasma pneumoniae</i>	3		1	2	0.08
Chlamydial pneumonia (excluding psittacosis)	2	3	1	1	0.04
Infectious gastroenteritis (only by Rotavirus)	6	11	10	21	0.84
Influenza-Associated Hospitalizations	10	8	4	5	0.20

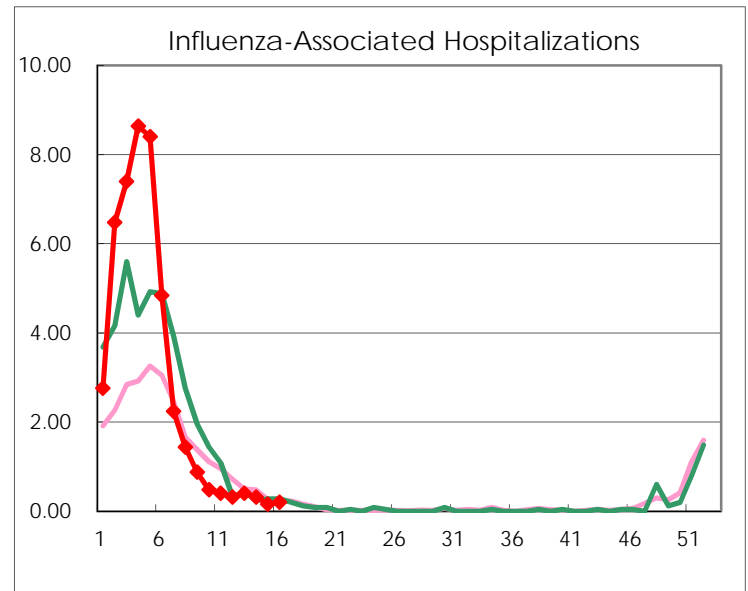
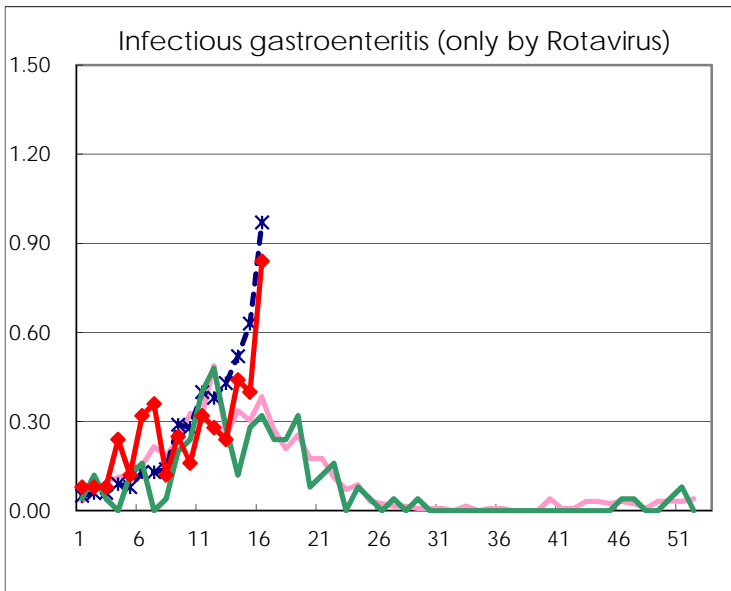
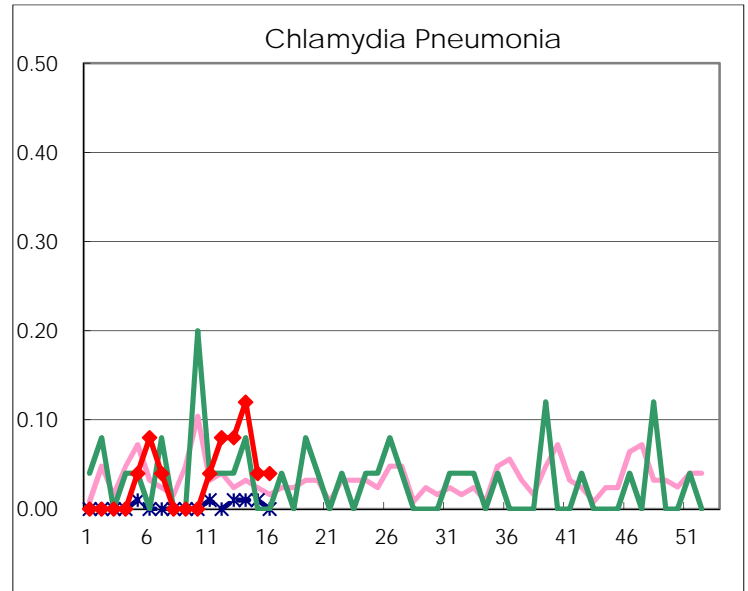
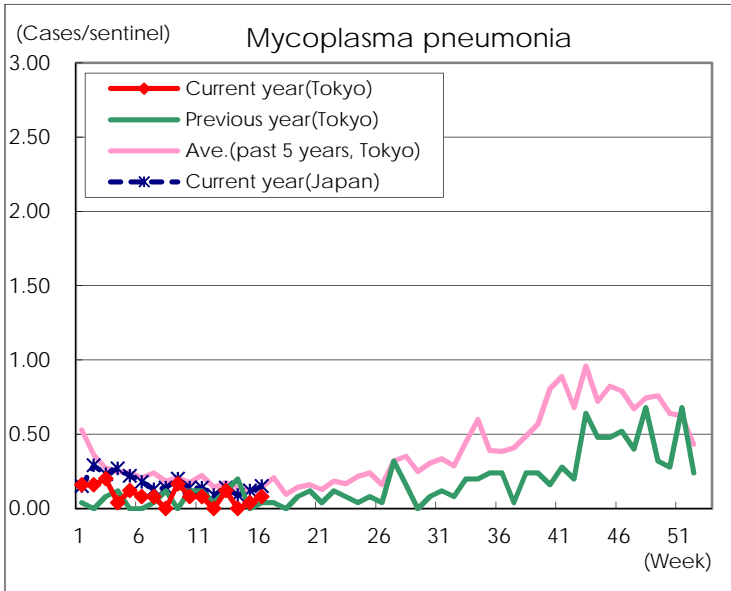
(Blank means 0.)

Disease Trend Graph (weekly reported cases per sentinel in comparison)









Number of sentinel facilities for weekly reporting		
Types of sentinels	Number of sentinels	Sentinels having reported
Pediatric	264	257
Influenza	419	410
Ophthalmic	39	38
Specially-designated	25	25