

10 May 2019 / Number 18

Surveillance System in Tokyo, Japan

The infectious diseases which all physicians must report

All physicians must report to health centers the incidence of the diseases which are shown at page one. Health centers electronically report the individual cases to Tokyo Metropolitan Infectious Disease Surveillance Center.

The infectious diseases required to be reported by the sentinels

The numbers of patients who visit the sentinel clinics or hospitals during a week are reported to health centers in Tokyo. And they electronically report the numbers to Tokyo Metropolitan Infectious Disease Surveillance Center. We have about 500 sentinel clinics and hospitals in Tokyo.

Tokyo Metropolitan Institute of Public Health

TEL:81-3-3363-3213 FAX:81-3-5332-7365

e-mail:www@tokyo-eiken.go.jp

URL:idsc.tokyo-eiken.go.jp/

Number of patients with the diseases which all physicians must report

Category	Diseases	Tokyo					Japan	
		15th	16th	17th	18th	Cum 2019	18th	Cum 2019
I	Ebola hemorrhagic fever							
	Crimean-Congo hemorrhagic fever							
	Smallpox							
	South American hemorrhagic fever							
	Plague							
	Marburg disease							
	Lassa fever							
II	Acute poliomyelitis							
	Tuberculosis	74	72	58	10	983	86	6,752
	Diphtheria							
	Severe Acute Respiratory Syndrome(SARS)							
	Middle East Respiratory Syndrome (MERS)							
	Avian influenza H5N1							
	Avian influenza H7N9							
III	Cholera					1		2
	Shigellosis		1			7		30
	Enterohemorrhagic Escherichia coli infection	2	3	1		42	12	350
	Typhoid fever					1	2	13
	Paratyphoid fever	1				2	1	9
IV	Hepatitis E	1	7	5		43	3	164
	West Nile fever							
	Hepatitis A	3	5	7	2	37	5	156
	Echinococcosis							3
	Yellow fever							
	Psittacosis					2		9
	Omsk hemorrhagic fever							
	Relapsing fever							
	Kyasanur forest disease							
	Q fever							
	Rabies							
	Coccidioidomycosis							1
	Monkeypox							
	Zika virus infection							
	Severe Fever with Thrombocytopenia Syndrome						1	14
	Hemorrhagic fever with renal syndrome							
	Western equine encephalitis							
	Tick-borne encephalitis							
	Anthrax							
	Chikungunya fever							2
	Scrub typhus(Tsutsugamushi disease)							48
	Dengue fever	1			1	30	3	99
	Eastern equine encephalitis							
	Avian influenza (excluding H5N1 and H7N9)							
	Nipah virus infection							
	Japanese spotted fever						2	16
	Japanese encephalitis							
	Hantavirus pulmonary syndrome							
	Herpes B virus infection							
	Glanders							
	Brucellosis							1
	Venezuelan equine encephalitis							
	Hendra virus infection							
	Epidemic typhus							
	Botulism							1
Malaria					2		12	
Tularemia								
Lyme disease								
Lyssavirus infection(excluding rabies)								
Rift valley fever								
Melioidosis								
Legionellosis	4	3		1	42	21	436	
Leptospirosis					1		3	
Rocky mountain spotted fever								

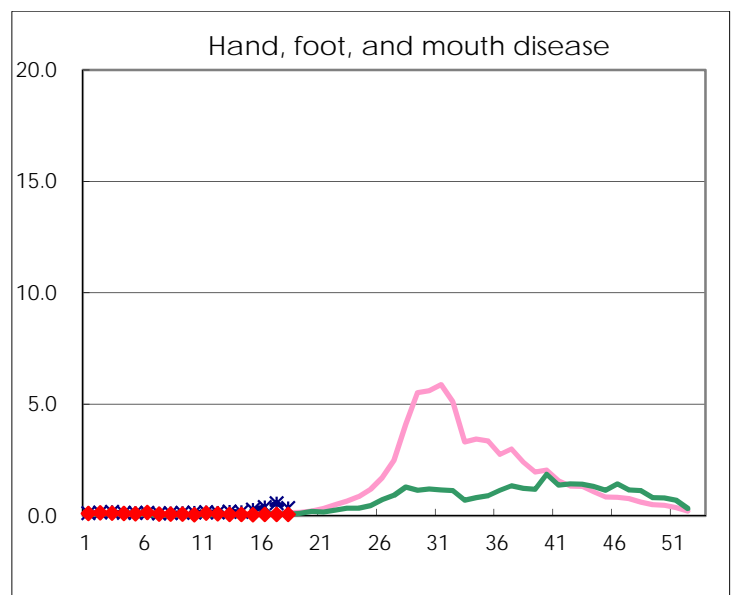
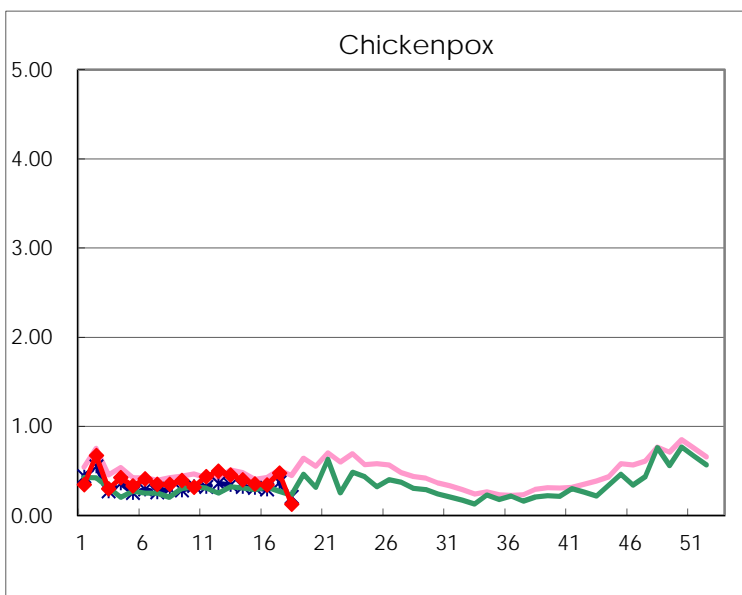
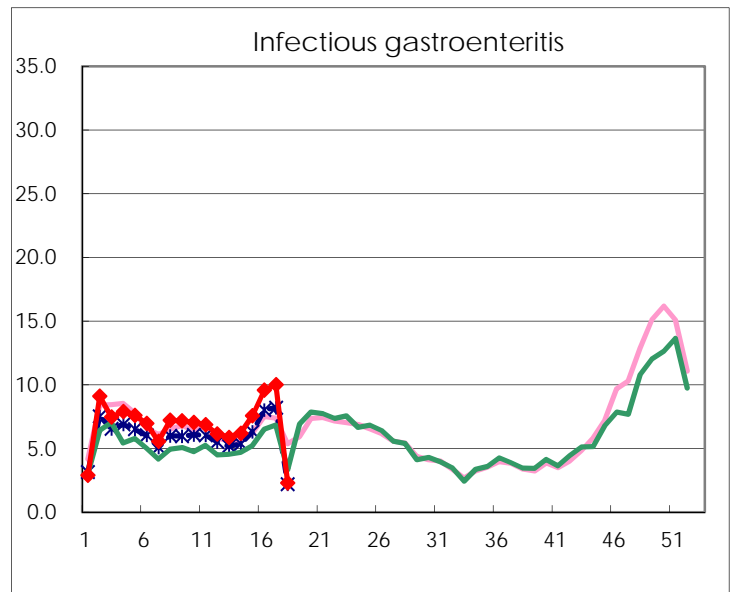
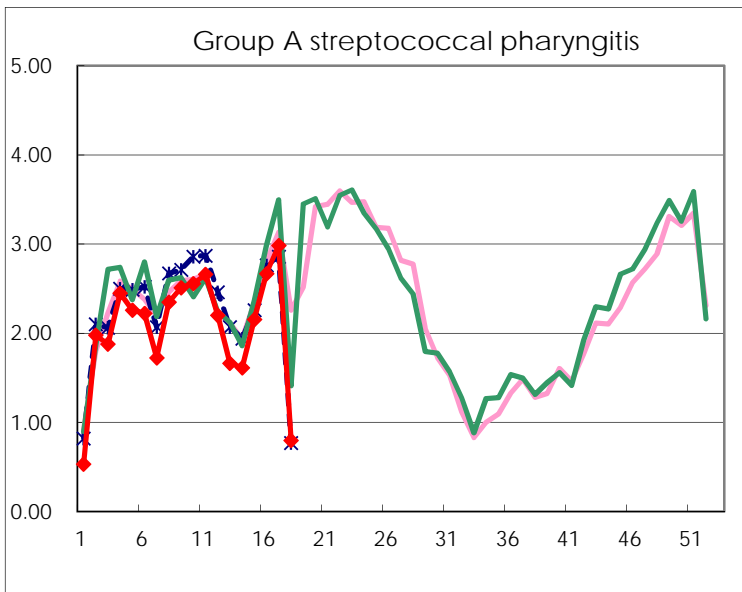
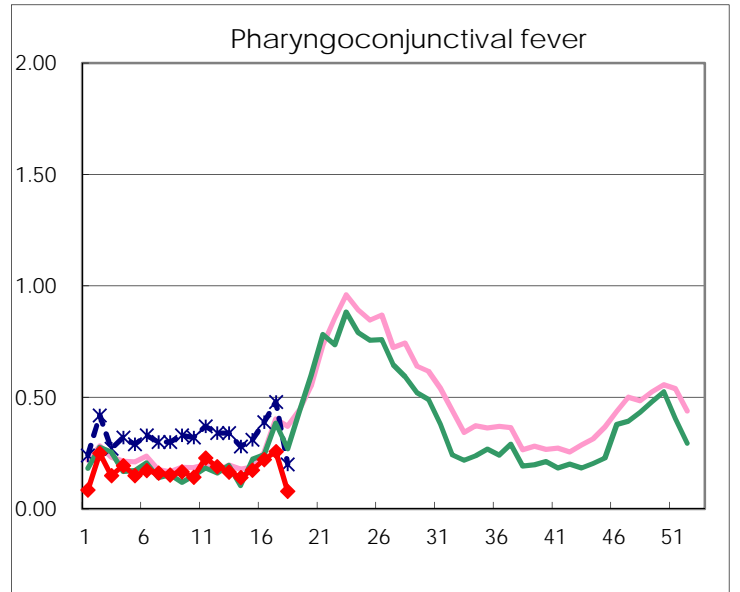
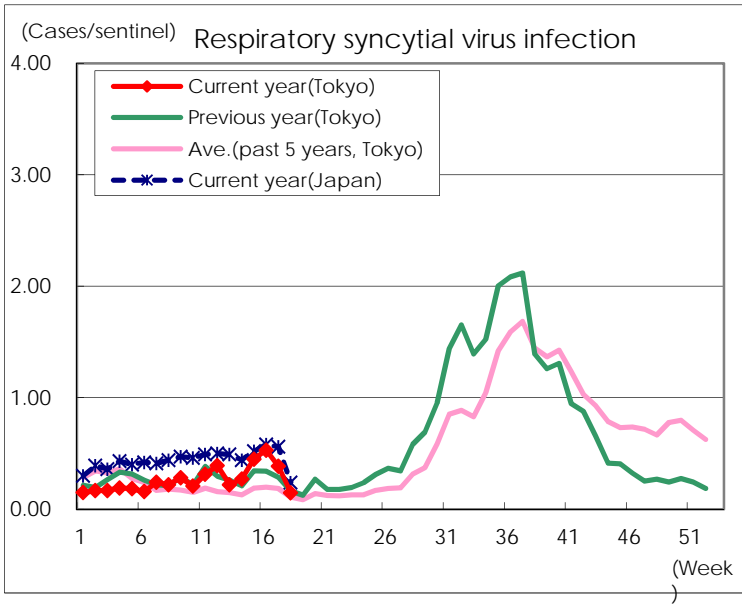
Category	Diseases	Tokyo					Japan	
		15th	16th	17th	18th	Cum 2019	18th	Cum 2019
V	Amebiasis	8	1	3		60	2	298
	Viral hepatitis(excluding hepatitis A and E)			1		27	3	103
	CRE infection	3	5	3	2	69	11	613
	Acute Flaccid Paralysis (excluding Acute poliomyelitis)					1		18
	Acute encephalitis(excluding JE and WNE)	1	2	1		40	8	380
	Cryptosporidiosis					2		6
	Creutzfeldt-Jakob disease			1		9	1	51
	Severe invasive streptococcal infections(TSLS)	4	3	2		35	8	317
	Acquired immunodeficiency syndrome (AIDS)	8	9	3	1	139	5	379
	Giardiasis					3		12
	Invasive <i>Haemophilus influenzae</i> disease	2		1		31	5	214
	Invasive meningococcal disease					1		19
	Invasive pneumococcal disease	8	13	10	2	156	49	1,331
	Varicella (limited to hospitalized case)			3		20	3	139
	Congenital rubella syndrome			1		1		2
	Syphilis	29	34	30	1	544	13	2,052
	Disseminated cryptococcosis	1				6		48
	Tetanus					1	1	22
	Vancomycin-resistant <i>S. aureus</i> infection							
	Vancomycin-resistant <i>Enterococcus</i> infection		1			3		28
	Pertussis	23	30	28		602	49	5,337
Rubella	36	28	35	7	480	33	1,434	
Measles	4	5	11	7	71	11	467	
MDRA infection					2		12	

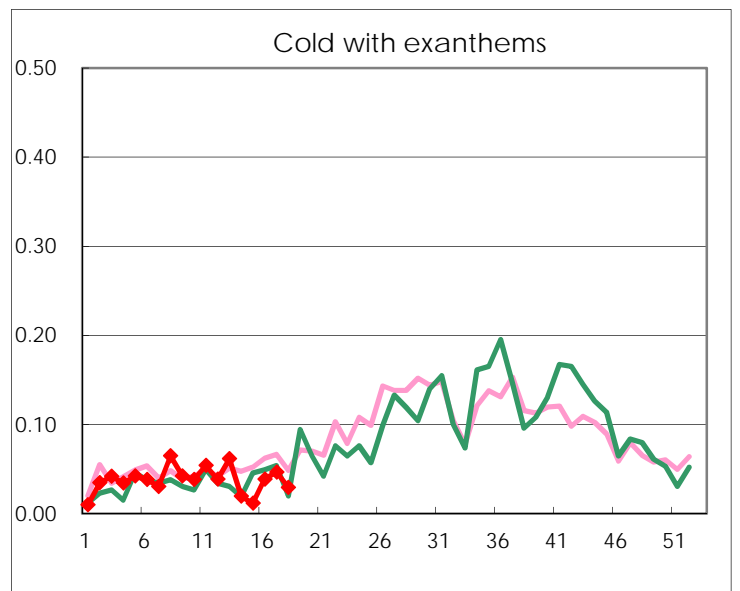
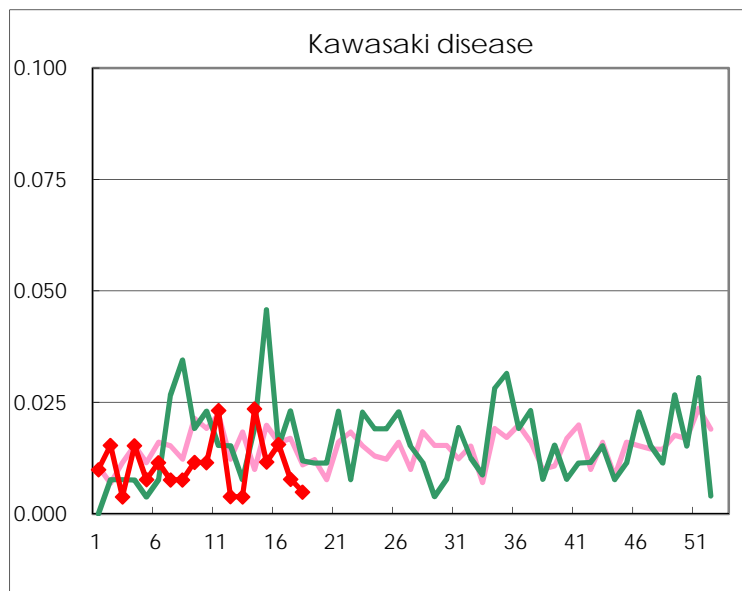
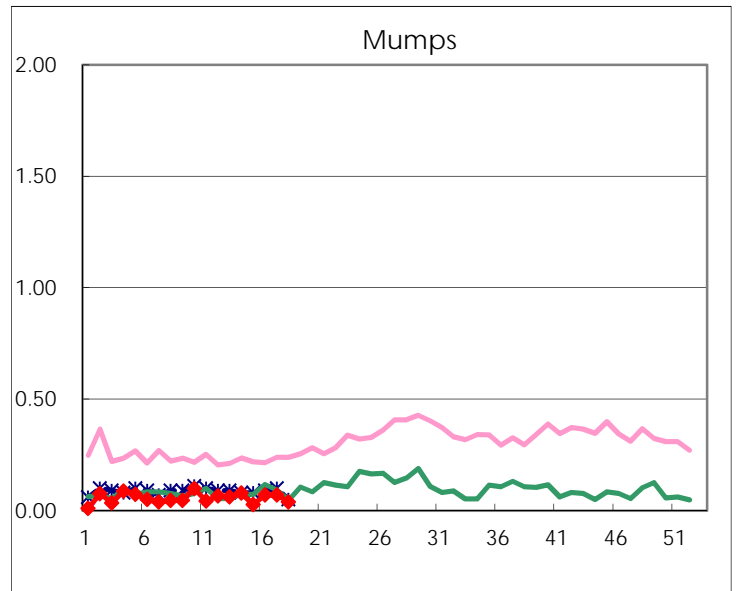
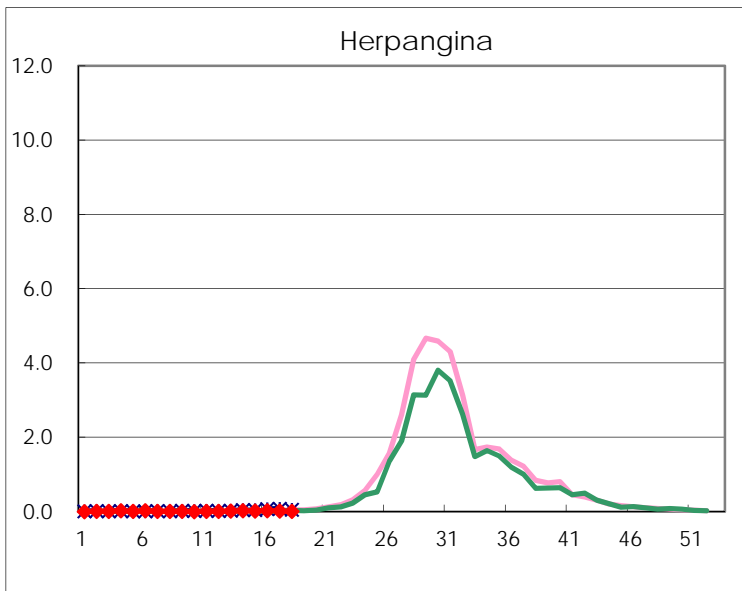
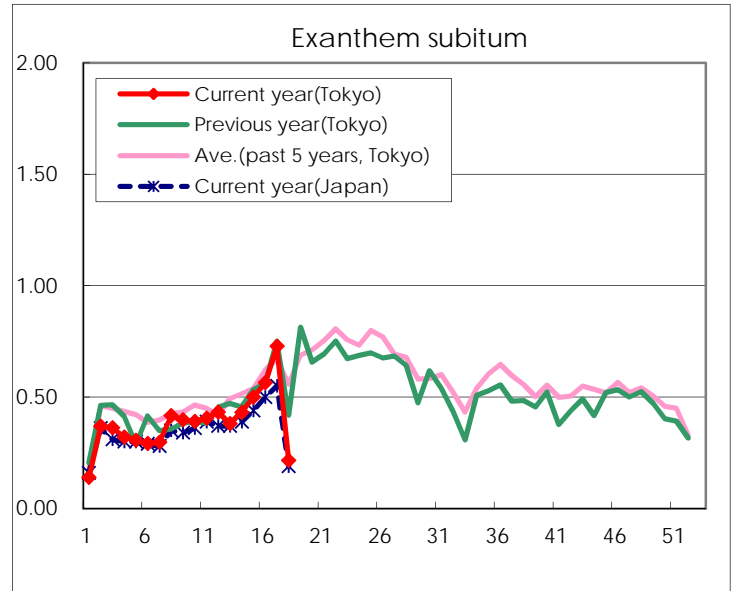
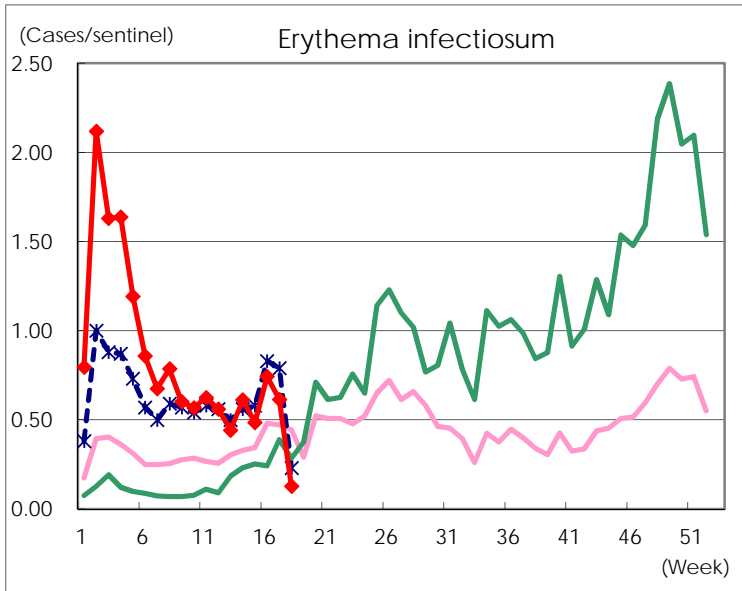
Number of patients with the diseases to be reported
by the designated clinics and hospitals

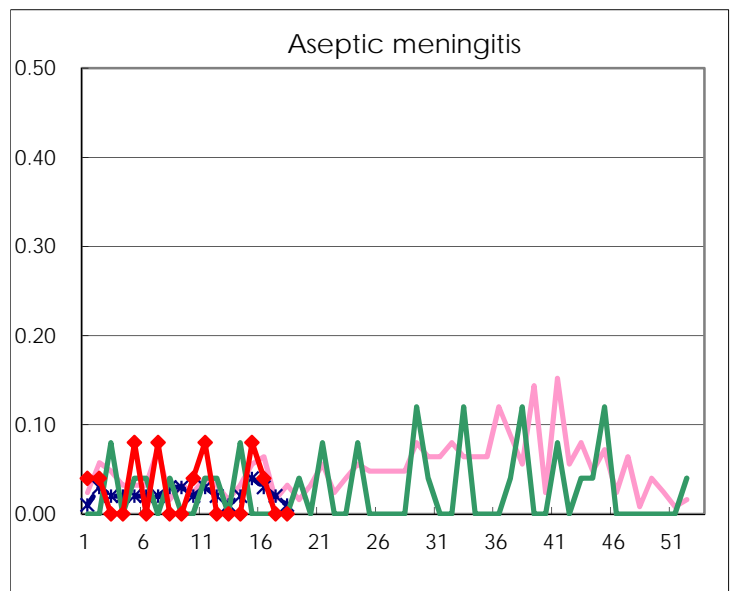
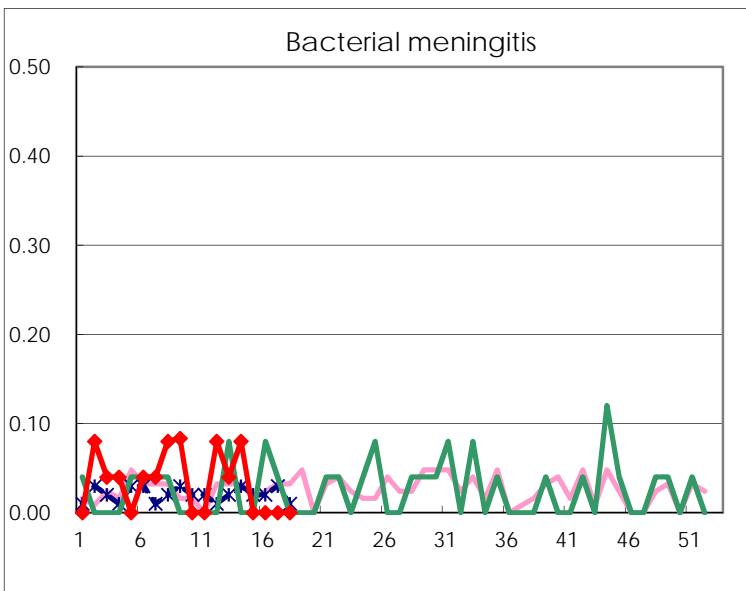
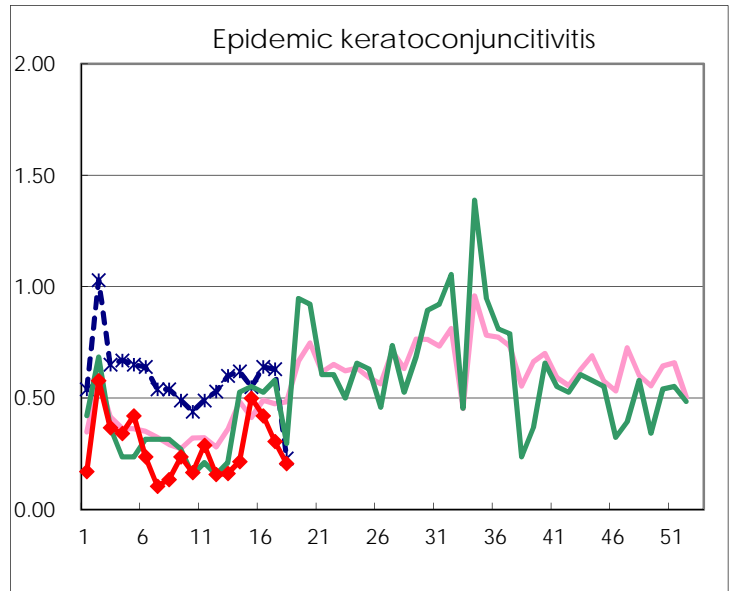
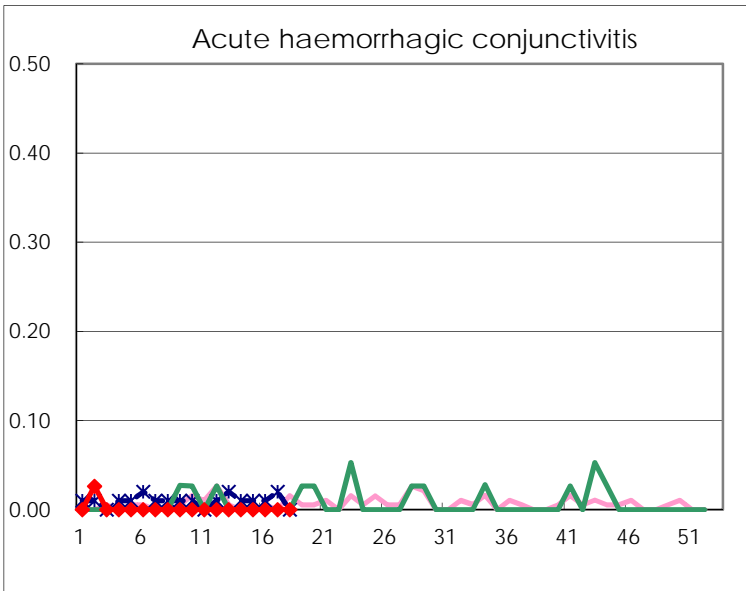
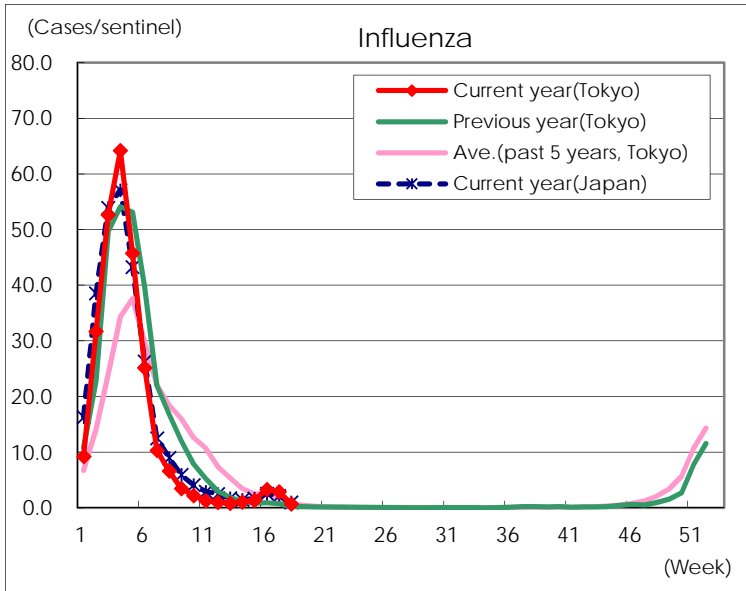
Diseases	Tokyo				
	15th	16th	17th	18th	/sentinel
Respiratory syncytial virus infection	116	136	99	30	0.15
Pharyngoconjunctival fever	45	57	66	16	0.08
Group A streptococcal pharyngitis	556	686	767	163	0.80
Infectious gastroenteritis	1,952	2,461	2,574	468	2.29
Chickenpox	91	88	122	26	0.13
Hand, foot, and mouth disease	12	16	14	12	0.06
Erythema infectiosum	125	191	158	26	0.13
Exanthem subitum	129	145	187	44	0.22
Herpangina	5	7	4	1	
Mumps	7	18	18	8	0.04
Kawasaki disease	3	4	2	1	
Cold with exanthems	3	10	12	6	0.03
Influenza	555	1,339	1,188	229	0.68
Acute hemorrhagic conjunctivitis					
Epidemic keratoconjunctivitis	19	16	11	6	0.21
Bacterial meningitis					
Aseptic meningitis	2	1			
<i>Mycoplasma pneumoniae</i>	1	2	1	1	0.04
Chlamydial pneumonia (excluding psittacosis)	1	1	2	1	0.04
Infectious gastroenteritis (only by Rotavirus)	10	21	13	7	0.28
Influenza-Associated Hospitalizations	4	5	7	2	0.08

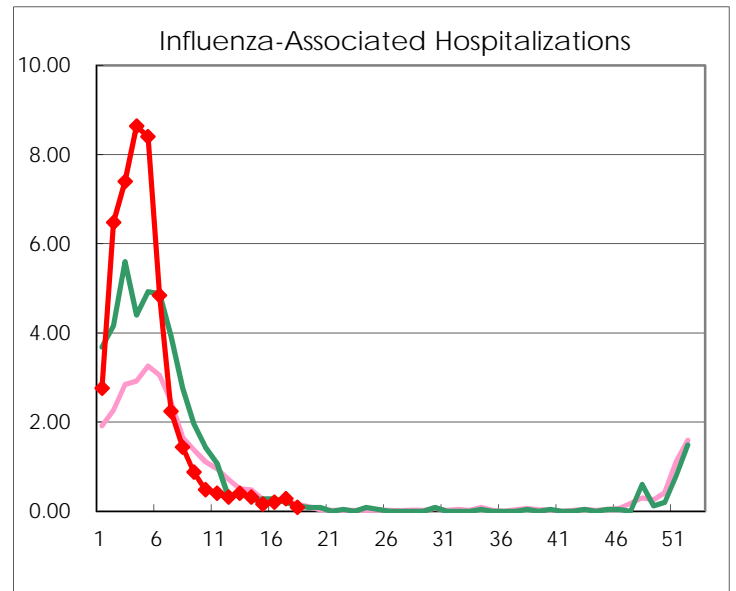
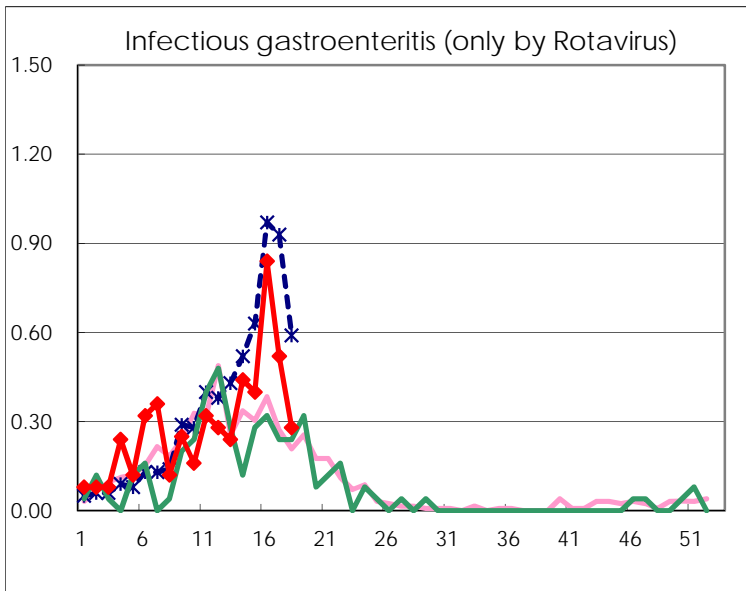
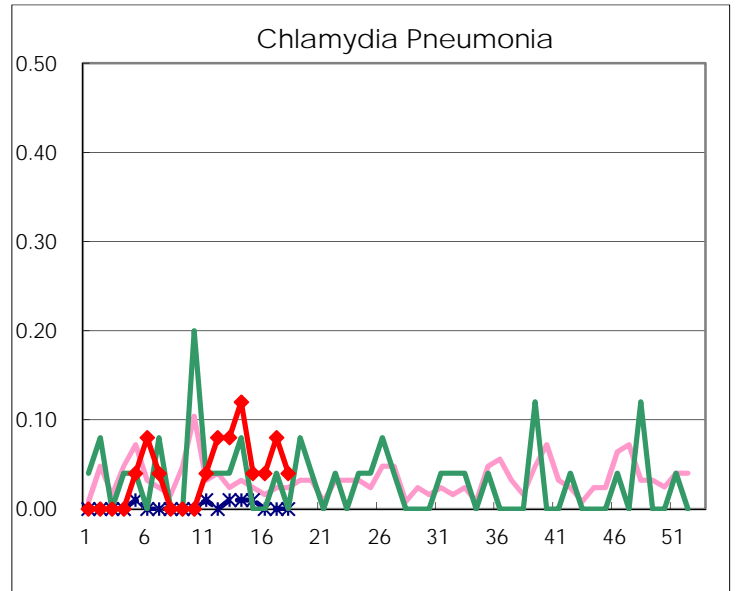
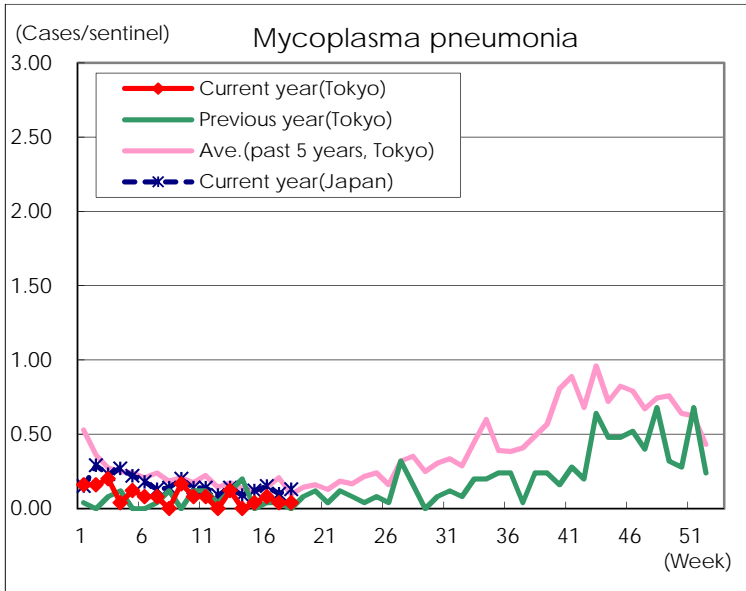
(Blank means 0.)

Disease Trend Graph (weekly reported cases per sentinel in comparison)









Number of sentinel facilities for weekly reporting		
Types of sentinels	Number of sentinels	Sentinels having reported
Pediatric	264	204
Influenza	419	337
Ophthalmic	39	29
Specially-designated	25	25