

**16 May 2019 / Number 19**

## Surveillance System in Tokyo, Japan

The infectious diseases which all physicians must report

All physicians must report to health centers the incidence of the diseases which are shown at page one. Health centers electronically report the individual cases to Tokyo Metropolitan Infectious Disease Surveillance Center.

The infectious diseases required to be reported by the sentinels

The numbers of patients who visit the sentinel clinics or hospitals during a week are reported to health centers in Tokyo. And they electronically report the numbers to Tokyo Metropolitan Infectious Disease Surveillance Center. We have about 500 sentinel clinics and hospitals in Tokyo.

Tokyo Metropolitan Institute of Public Health

TEL:81-3-3363-3213 FAX:81-3-5332-7365

e-mail:[www@tokyo-eiken.go.jp](mailto:www@tokyo-eiken.go.jp)

URL:[idsc.tokyo-eiken.go.jp/](http://idsc.tokyo-eiken.go.jp/)

---

Number of patients with the diseases which all physicians must report

Category	Diseases	Tokyo					Japan	
		16th	17th	18th	19th	Cum 2019	19th	Cum 2019
I	Ebola hemorrhagic fever							
	Crimean-Congo hemorrhagic fever							
	Smallpox							
	South American hemorrhagic fever							
	Plague							
	Marburg disease							
	Lassa fever							
II	Acute poliomyelitis							
	Tuberculosis	74	61	15	42	1,036	282	7,149
	Diphtheria							
	Severe Acute Respiratory Syndrome(SARS)							
	Middle East Respiratory Syndrome (MERS)							
	Avian influenza H5N1							
	Avian influenza H7N9							
III	Cholera					1		2
	Shigellosis	1				7	1	31
	Enterohemorrhagic Escherichia coli infection	3	1			42	24	377
	Typhoid fever					1		13
	Paratyphoid fever				1	3		10
IV	Hepatitis E	7	5		4	47	7	176
	West Nile fever							
	Hepatitis A	5	7	2	5	42	5	166
	Echinococcosis							4
	Yellow fever							
	Psittacosis				1	3		10
	Omsk hemorrhagic fever							
	Relapsing fever							
	Kyasanur forest disease							
	Q fever							
	Rabies							
	Coccidioidomycosis							1
	Monkeypox							
	Zika virus infection							
	Severe Fever with Thrombocytopenia Syndrome						3	18
	Hemorrhagic fever with renal syndrome							
	Western equine encephalitis							
	Tick-borne encephalitis							
	Anthrax							
	Chikungunya fever							2
	Scrub typhus(Tsutsugamushi disease)							48
	Dengue fever			1	5	35	7	108
	Eastern equine encephalitis							
	Avian influenza (excluding H5N1 and H7N9)							
	Nipah virus infection							
	Japanese spotted fever						5	22
	Japanese encephalitis							
	Hantavirus pulmonary syndrome							
	Herpes B virus infection							
	Glanders							
	Brucellosis							1
	Venezuelan equine encephalitis							
	Hendra virus infection							
	Epidemic typhus							
Botulism							1	
Malaria					2	1	13	
Tularemia								
Lyme disease								
Lyssavirus infection(excluding rabies)								
Rift valley fever								
Melioidosis								
Legionellosis	3		1	6	48	36	480	
Leptospirosis					1		3	
Rocky mountain spotted fever								

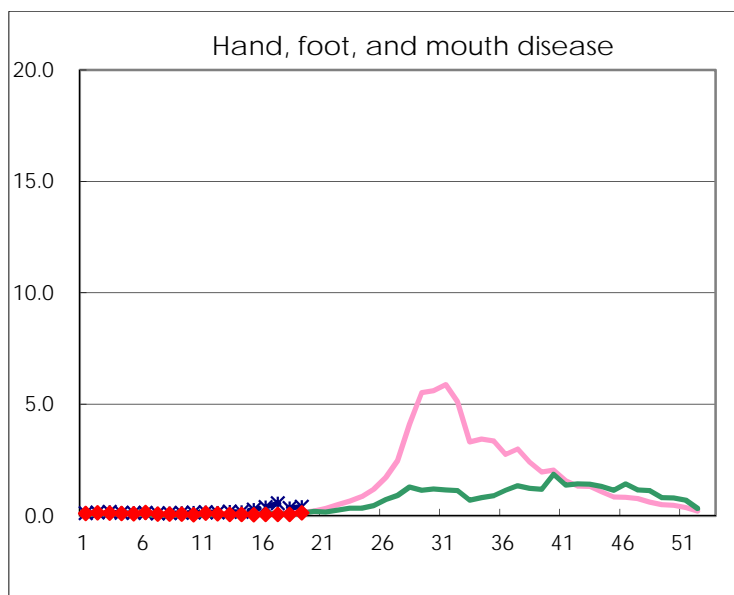
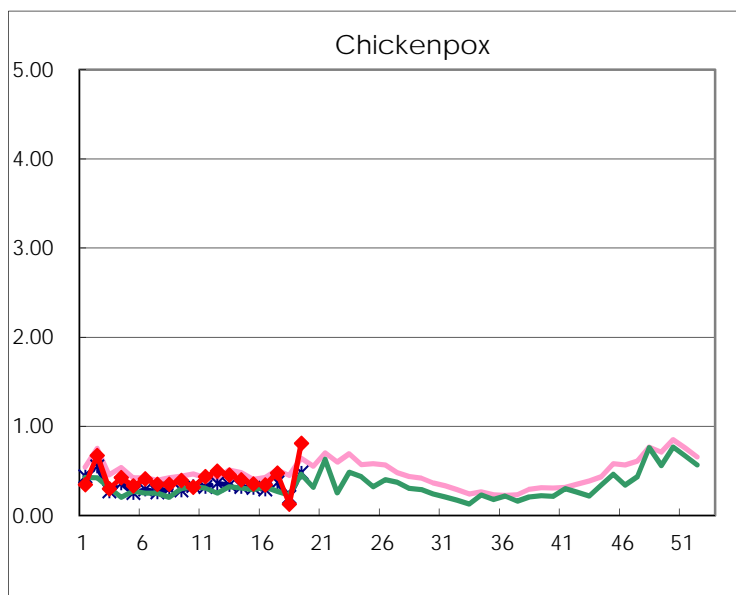
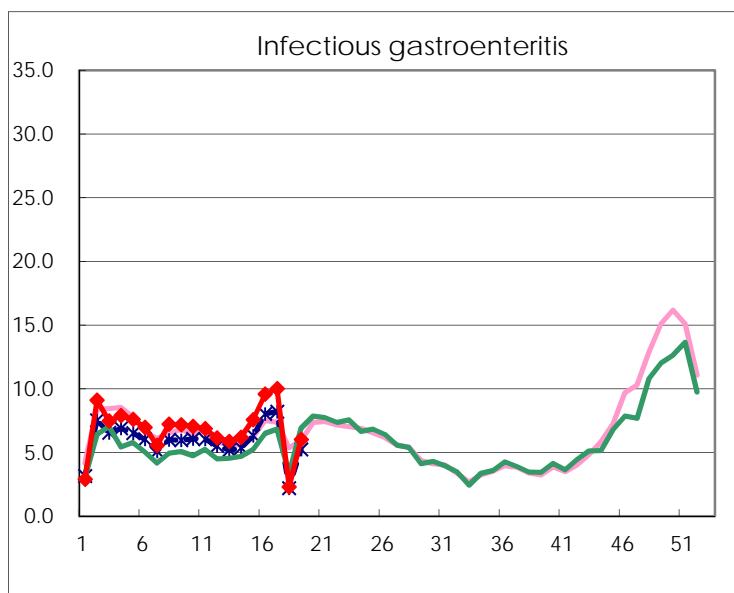
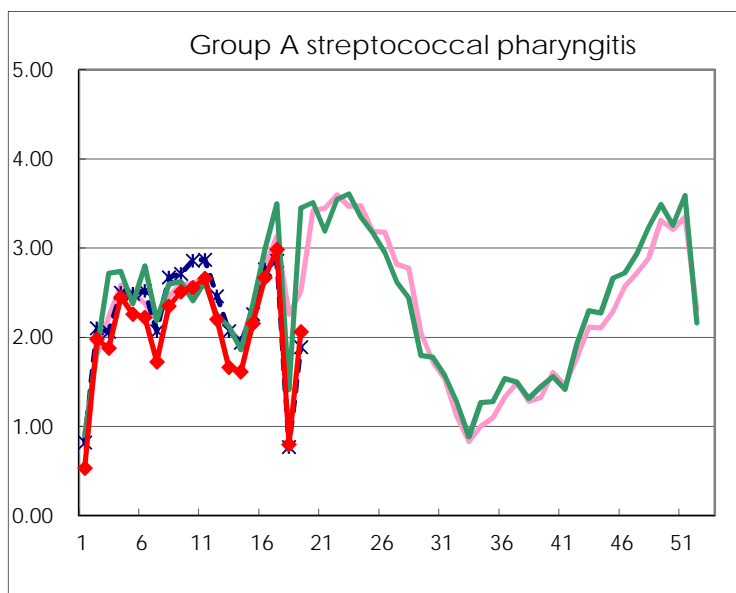
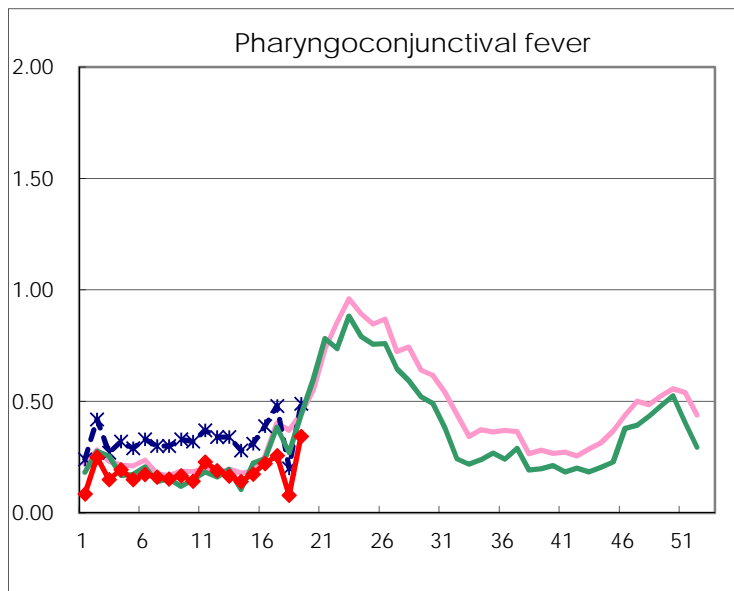
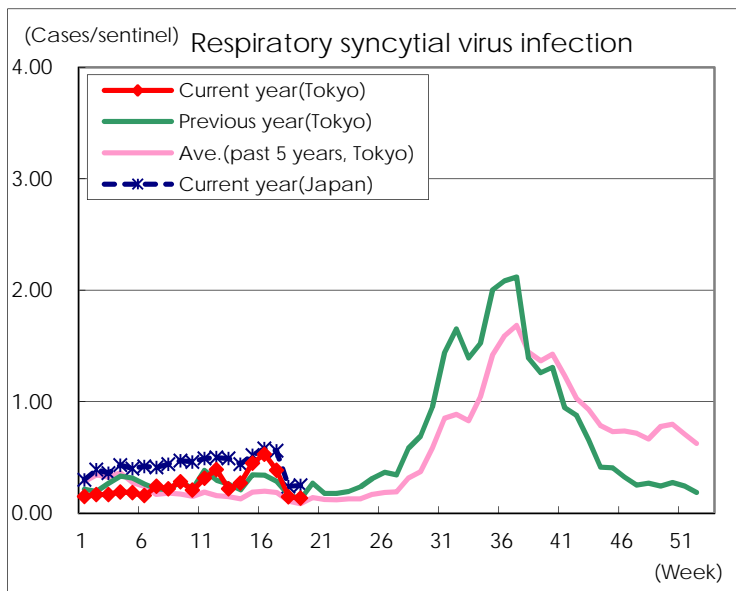
Category	Diseases	Tokyo					Japan	
		16th	17th	18th	19th	Cum 2019	19th	Cum 2019
V	Amebiasis	1	3		1	61	9	310
	Viral hepatitis(excluding hepatitis A and E)		1		1	28	4	107
	CRE infection	5	3	3	1	71	18	646
	Acute Flaccid Paralysis (excluding Acute poliomyelitis)					1	2	20
	Acute encephalitis(excluding JE and WNE)	2	1		1	41	7	399
	Cryptosporidiosis					2		6
	Creutzfeldt-Jakob disease		1			9	2	54
	Severe invasive streptococcal infections(TSLs)	3	2	2	2	39	7	335
	Acquired immunodeficiency syndrome (AIDS)	9	3	1	2	141	8	396
	Giardiasis					3		13
	Invasive <i>Haemophilus influenzae</i> disease		1		3	34	15	235
	Invasive meningococcal disease					1		20
	Invasive pneumococcal disease	14	11	2	9	169	79	1,460
	Varicella (limited to hospitalized case)		3		2	22	6	155
	Congenital rubella syndrome		1			1		2
	Syphilis	35	39	1	13	567	60	2,175
	Disseminated cryptococcosis					6	1	49
	Tetanus				1	2	4	28
	Vancomycin-resistant <i>S. aureus</i> infection							
	Vancomycin-resistant <i>Enterococcus</i> infection	1				3		28
	Pertussis	30	28		23	625	164	5,597
Rubella	28	35	9	15	497	45	1,486	
Measles	5	11	7	6	77	18	486	
MDRA infection					2		13	

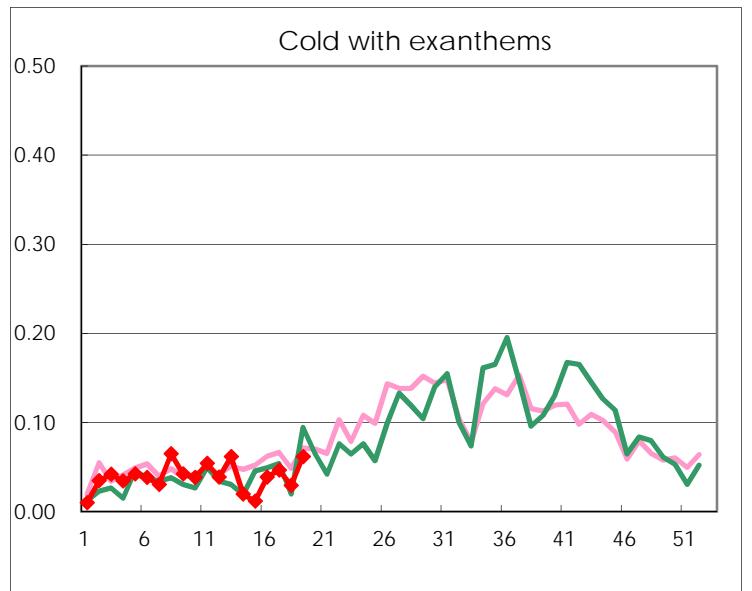
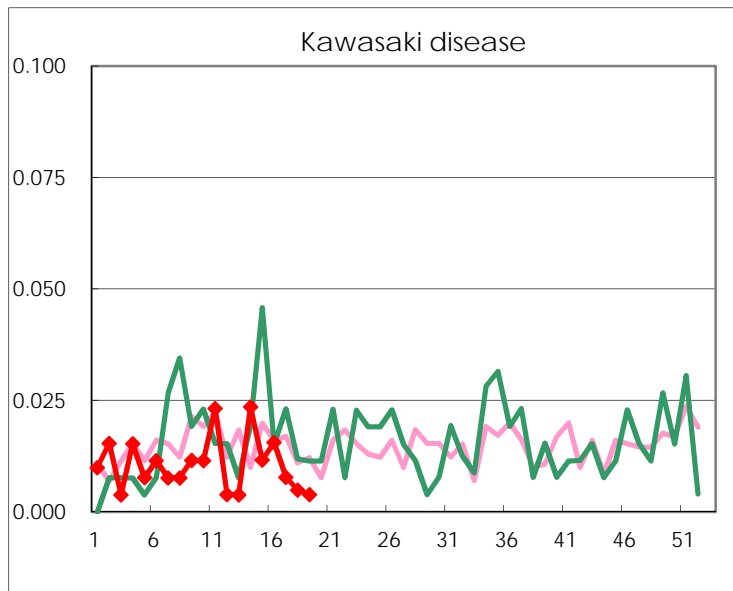
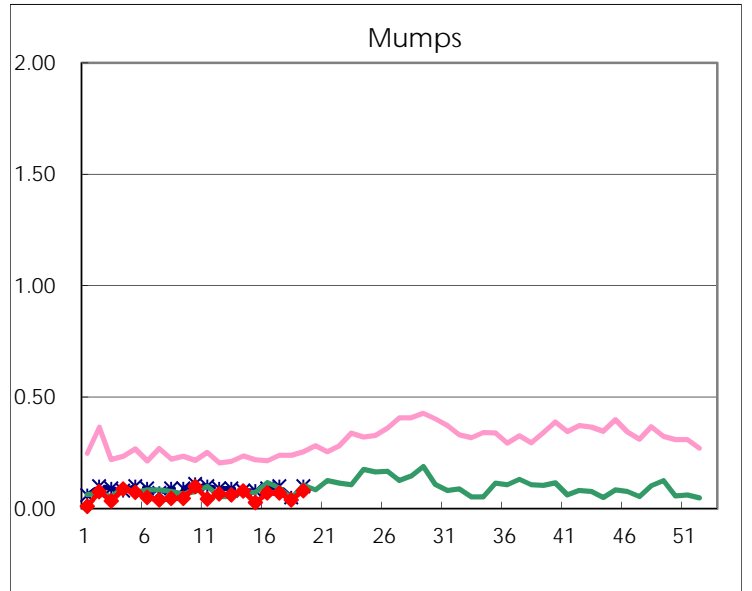
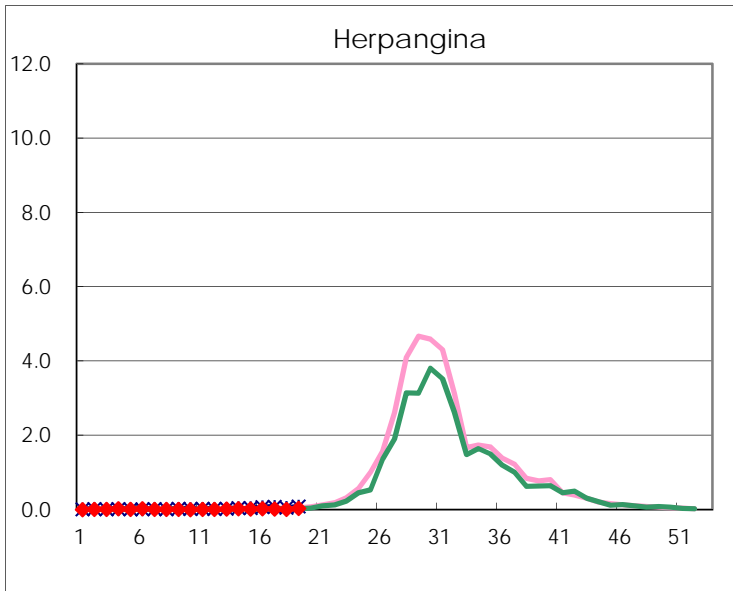
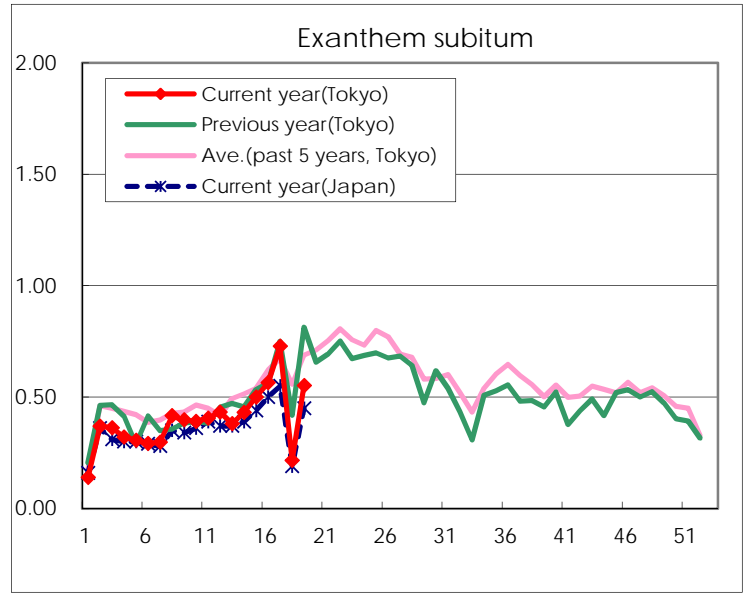
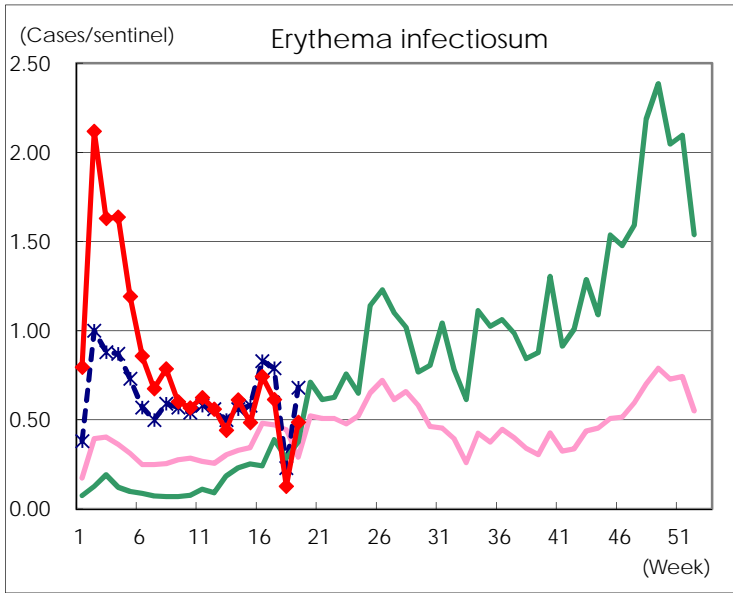
Number of patients with the diseases to be reported  
by the designated clinics and hospitals

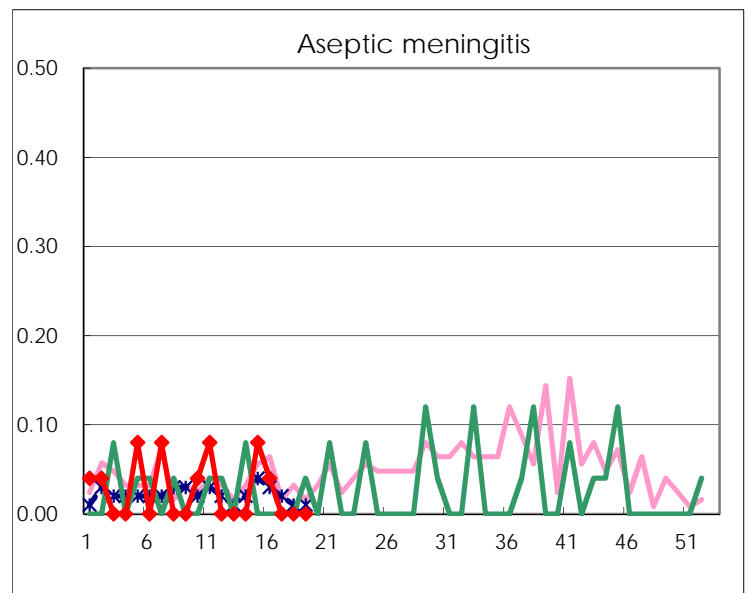
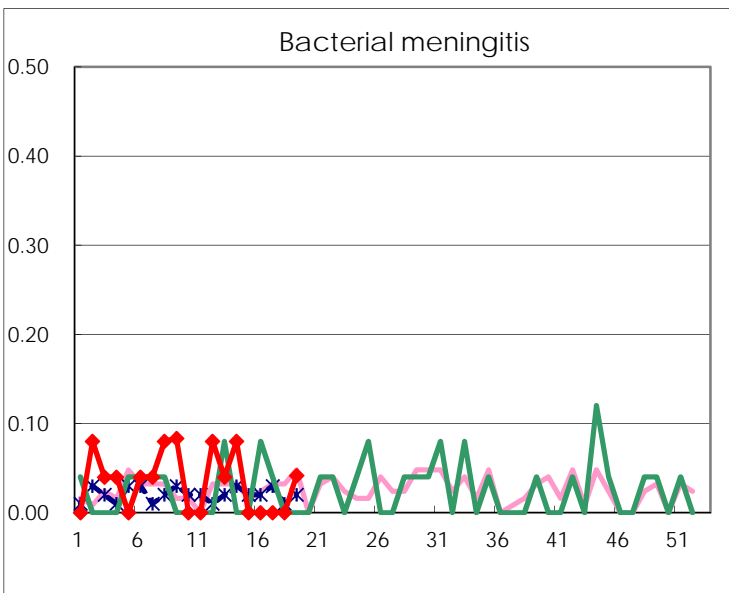
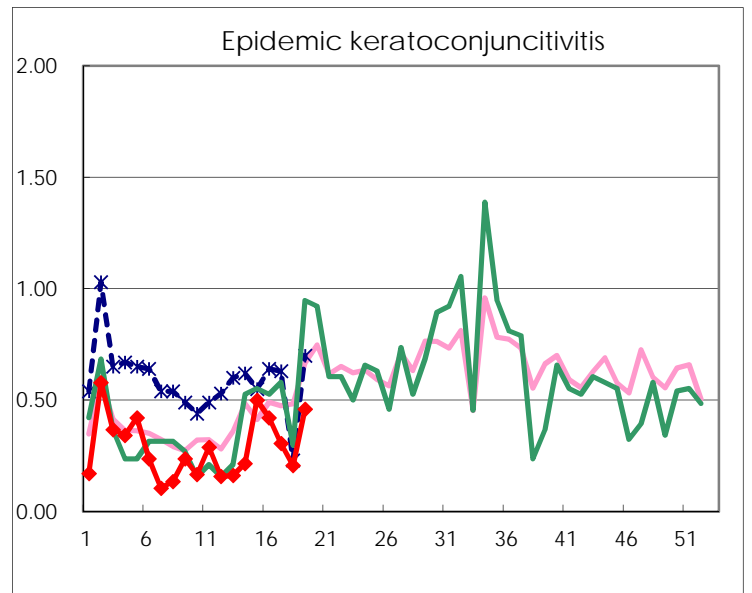
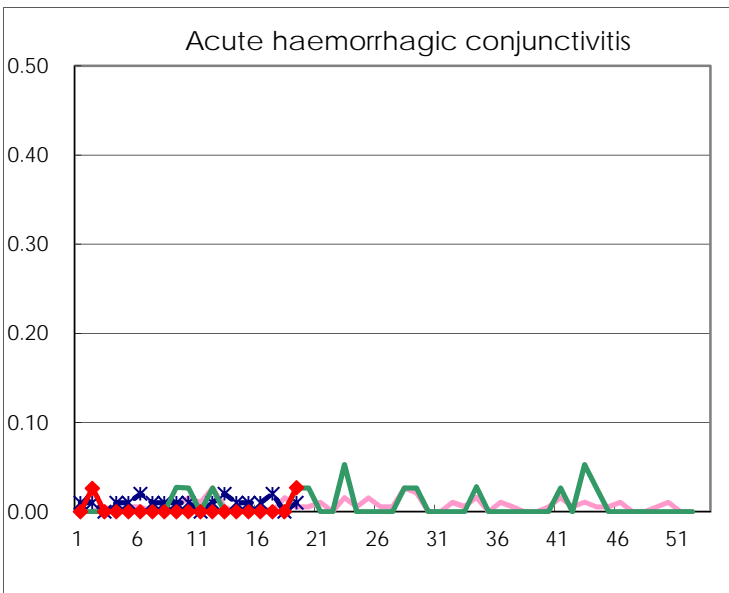
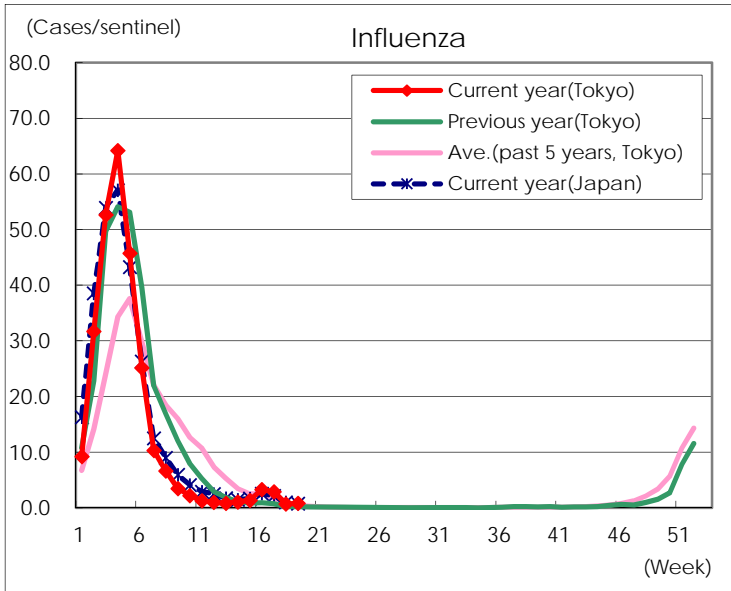
Diseases	Tokyo				
	16th	17th	18th	19th	/sentinel
Respiratory syncytial virus infection	136	99	30	35	0.14
Pharyngoconjunctival fever	57	66	16	89	0.34
Group A streptococcal pharyngitis	686	767	163	534	2.06
Infectious gastroenteritis	2,461	2,574	468	1,559	6.02
Chickenpox	88	122	26	209	0.81
Hand, foot, and mouth disease	16	14	12	34	0.13
Erythema infectiosum	191	158	26	126	0.49
Exanthem subitum	145	187	44	143	0.55
Herpangina	7	4	1	8	0.03
Mumps	18	18	8	21	0.08
Kawasaki disease	4	2	1	1	
Cold with exanthems	10	12	6	16	0.06
Influenza	1,339	1,191	229	337	0.82
Acute hemorrhagic conjunctivitis				1	0.03
Epidemic keratoconjunctivitis	16	11	6	17	0.46
Bacterial meningitis				1	0.04
Aseptic meningitis	1				
<i>Mycoplasma pneumoniae</i>	2	1	1	1	0.04
Chlamydial pneumonia (excluding psittacosis)	1	2	1		
Infectious gastroenteritis (only by Rotavirus)	21	13	7	14	0.58
Influenza-Associated Hospitalizations	5	7	2	2	0.08

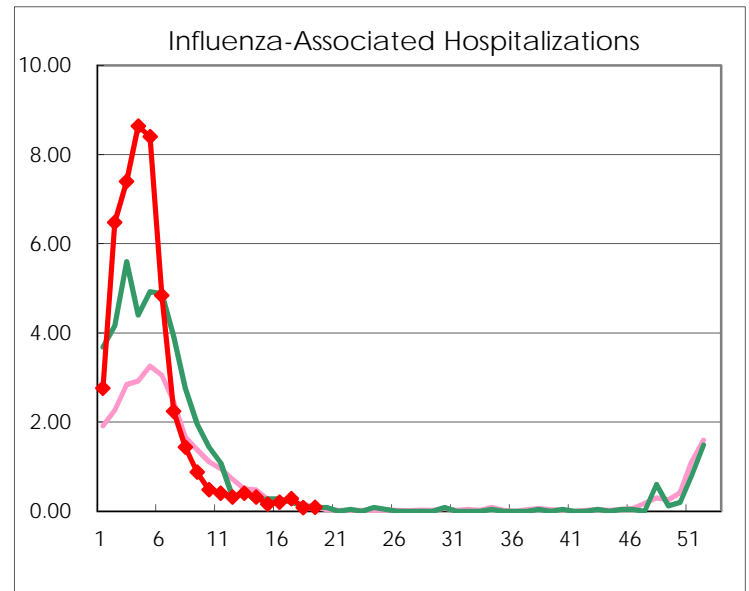
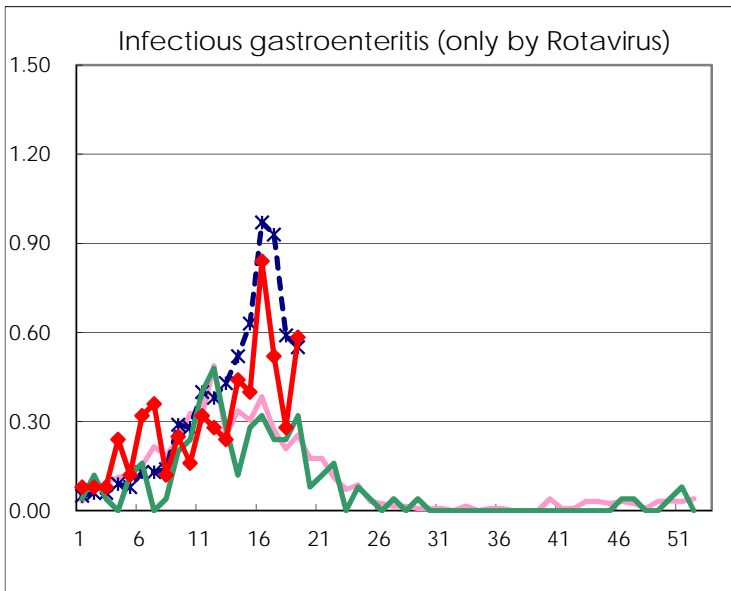
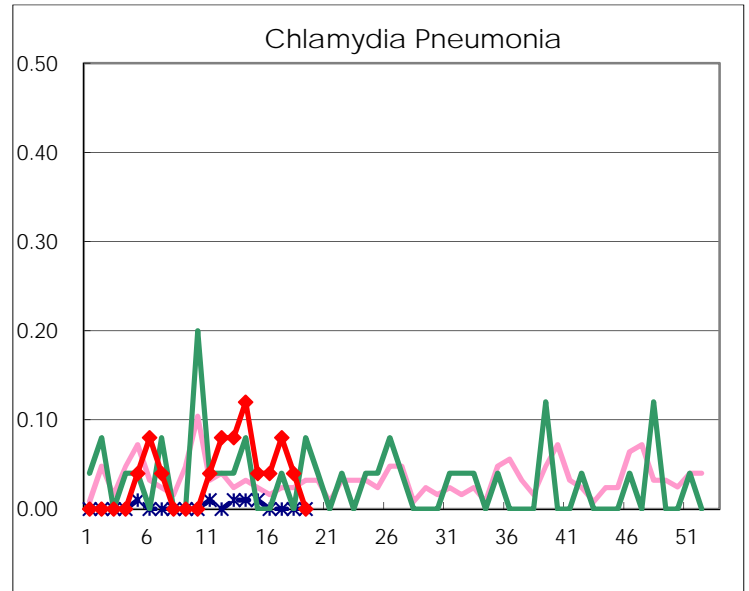
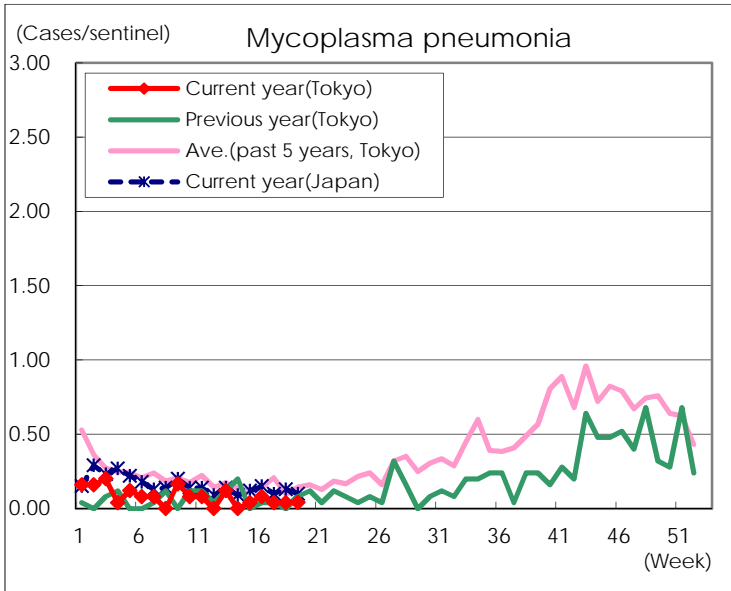
( Blank means 0. )

# Disease Trend Graph (weekly reported cases per sentinel in comparison)









Number of sentinel facilities for weekly reporting		
Types of sentinels	Number of sentinels	Sentinels having reported
Pediatric	264	259
Influenza	419	412
Ophthalmic	39	37
Specially-designated	25	24