

23 May 2019 / Number 20

Surveillance System in Tokyo, Japan

The infectious diseases which all physicians must report

All physicians must report to health centers the incidence of the diseases which are shown at page one. Health centers electronically report the individual cases to Tokyo Metropolitan Infectious Disease Surveillance Center.

The infectious diseases required to be reported by the sentinels

The numbers of patients who visit the sentinel clinics or hospitals during a week are reported to health centers in Tokyo. And they electronically report the numbers to Tokyo Metropolitan Infectious Disease Surveillance Center. We have about 500 sentinel clinics and hospitals in Tokyo.

Tokyo Metropolitan Institute of Public Health

TEL:81-3-3363-3213 FAX:81-3-5332-7365

e-mail:www@tokyo-eiken.go.jp

URL:idsc.tokyo-eiken.go.jp/

Number of patients with the diseases which all physicians must report

Category	Diseases	Tokyo					Japan	
		17th	18th	19th	20th	Cum 2019	20th	Cum 2019
I	Ebola hemorrhagic fever							
	Crimean-Congo hemorrhagic fever							
	Smallpox							
	South American hemorrhagic fever							
	Plague							
	Marburg disease							
	Lassa fever							
II	Acute poliomyelitis							
	Tuberculosis	70	17	42	62	1,109	354	7,667
	Diphtheria							
	Severe Acute Respiratory Syndrome(SARS)							
	Middle East Respiratory Syndrome (MERS)							
	Avian influenza H5N1							
III	Avian influenza H7N9							
	Cholera					1		2
	Shigellosis			1		8	2	34
	Enterohemorrhagic Escherichia coli infection	1			4	46	56	438
	Typhoid fever					1		13
IV	Paratyphoid fever			1		3		10
	Hepatitis E	5		4	2	49	5	183
	West Nile fever							
	Hepatitis A	7	2	5	8	50	11	179
	Echinococcosis							4
	Yellow fever							
	Psittacosis			1		3		10
	Omsk hemorrhagic fever							
	Relapsing fever							
	Kyasanur forest disease							
	Q fever							
	Rabies							
	Coccidioidomycosis							1
	Monkeypox							
	Zika virus infection							
	Severe Fever with Thrombocytopenia Syndrome				1	1	4	22
	Hemorrhagic fever with renal syndrome							
	Western equine encephalitis							
	Tick-borne encephalitis							
	Anthrax							
	Chikungunya fever							2
	Scrub typhus(Tsutsugamushi disease)						3	51
	Dengue fever		1	5	2	37	7	116
	Eastern equine encephalitis							
	Avian influenza (excluding H5N1 and H7N9)							
	Nipah virus infection							
	Japanese spotted fever						2	27
	Japanese encephalitis							
	Hantavirus pulmonary syndrome							
	Herpes B virus infection							
	Glanders							
	Brucellosis							1
	Venezuelan equine encephalitis							
	Hendra virus infection							
Epidemic typhus								
Botulism							1	
Malaria					2	1	14	
Tularemia								
Lyme disease								
Lyssavirus infection(excluding rabies)								
Rift valley fever								
Melioidosis								
Legionellosis		1	6	4	53	26	513	
Leptospirosis					1		3	
Rocky mountain spotted fever								

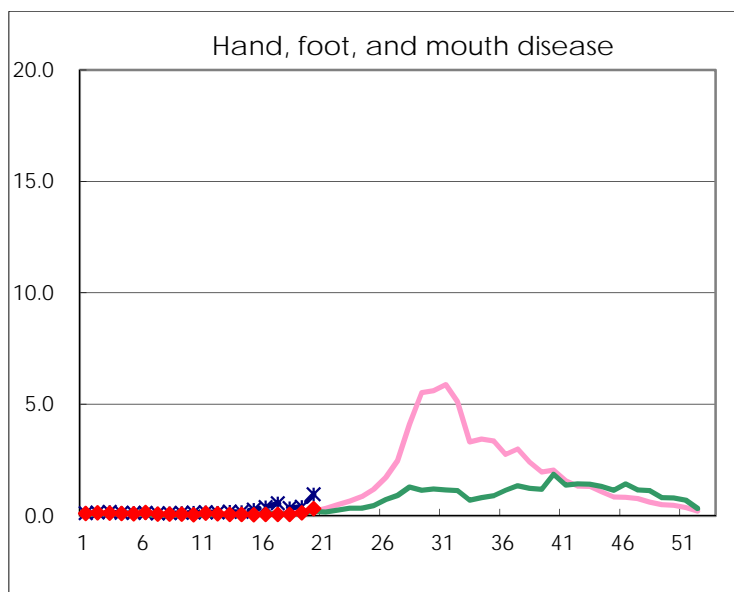
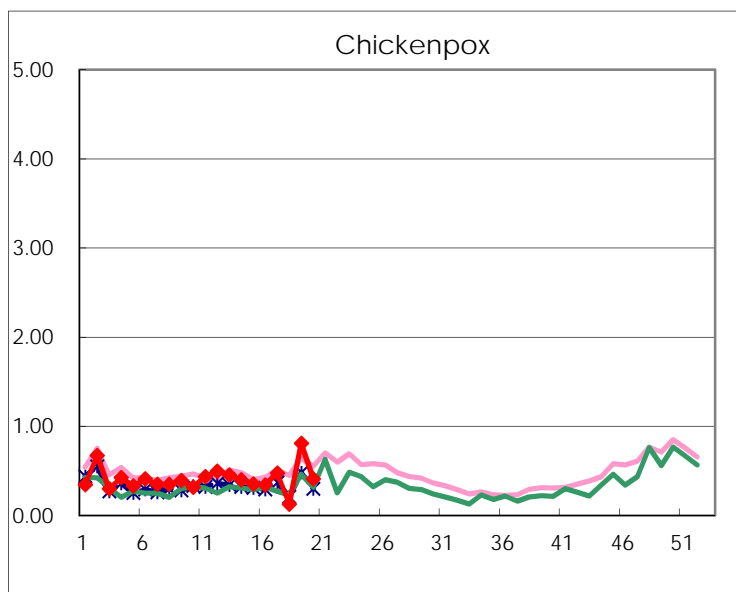
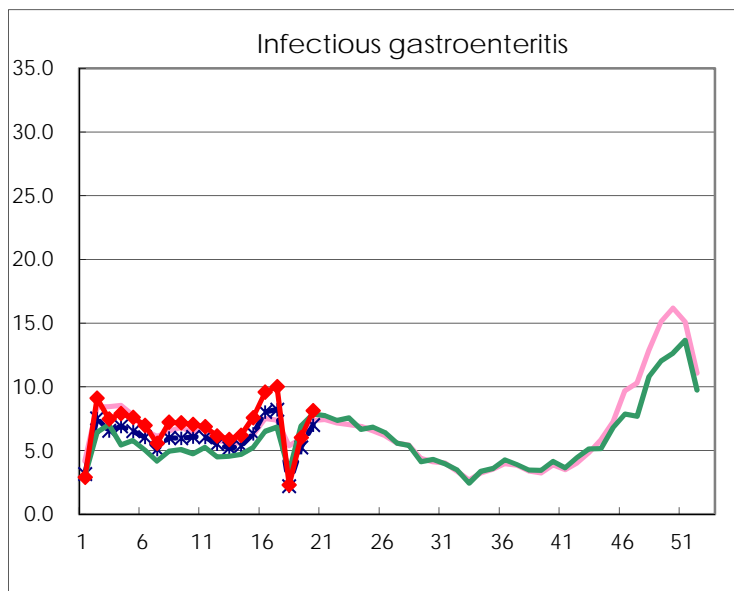
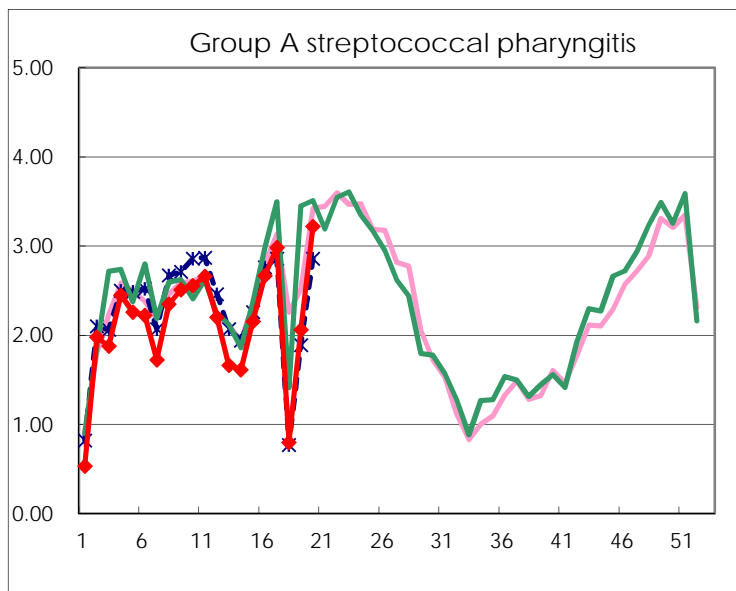
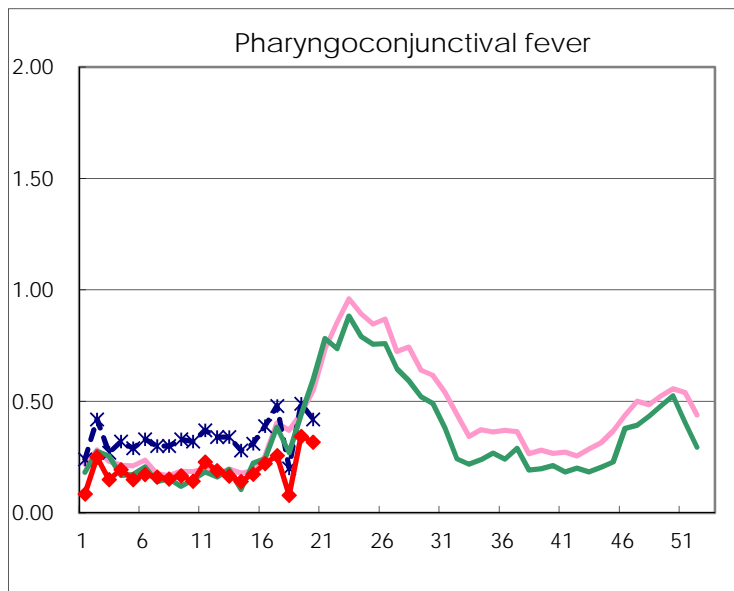
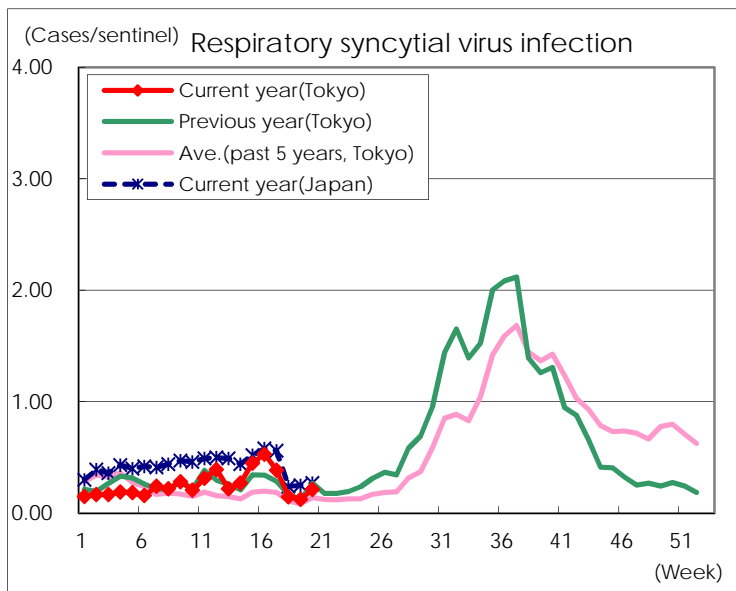
Category	Diseases	Tokyo					Japan	
		17th	18th	19th	20th	Cum 2019	20th	Cum 2019
V	Amebiasis	3		1	5	66	9	329
	Viral hepatitis(excluding hepatitis A and E)	1		1		28	3	111
	CRE infection	3	3	2	3	75	25	682
	Acute Flaccid Paralysis (excluding Acute poliomyelitis)				1	2	1	23
	Acute encephalitis(excluding JE and WNE)	1		1		41	5	409
	Cryptosporidiosis					2		6
	Creutzfeldt-Jakob disease	1				9	1	57
	Severe invasive streptococcal infections(TSLs)	2	3	2	3	43	10	352
	Acquired immunodeficiency syndrome (AIDS)	3	1	4	2	145	7	410
	Giardiasis					3	4	17
	Invasive <i>Haemophilus influenzae</i> disease	1		4	2	37	8	245
	Invasive meningococcal disease					1	1	20
	Invasive pneumococcal disease	11	3	13	11	185	68	1,577
	Varicella (limited to hospitalized case)	3		2	3	25	10	166
	Congenital rubella syndrome	1				1		2
	Syphilis	39	3	36	31	624	69	2,325
	Disseminated cryptococcosis					6		51
	Tetanus			1		2	3	32
	Vancomycin-resistant <i>S. aureus</i> infection							
	Vancomycin-resistant <i>Enterococcus</i> infection					3	1	30
	Pertussis	28		23	36	661	242	5,922
Rubella	35	9	26	28	536	55	1,565	
Measles	11	7	7	17	95	32	533	
MDRA infection					2		13	

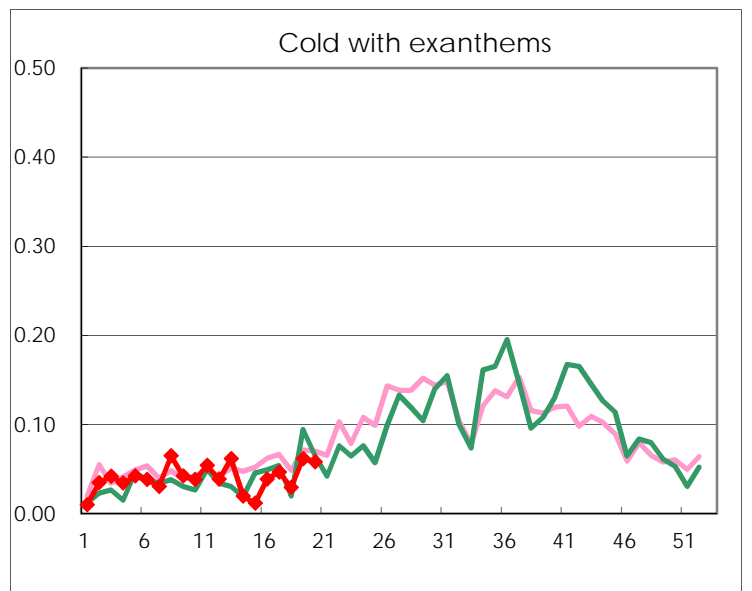
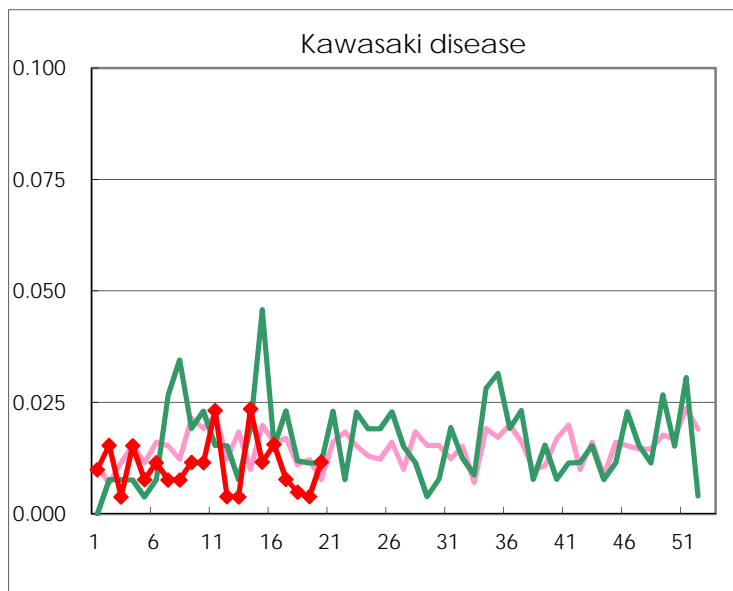
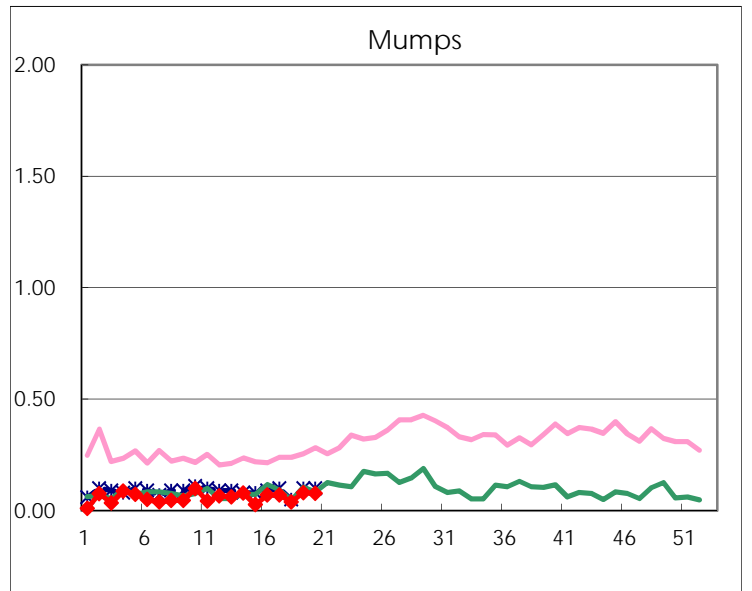
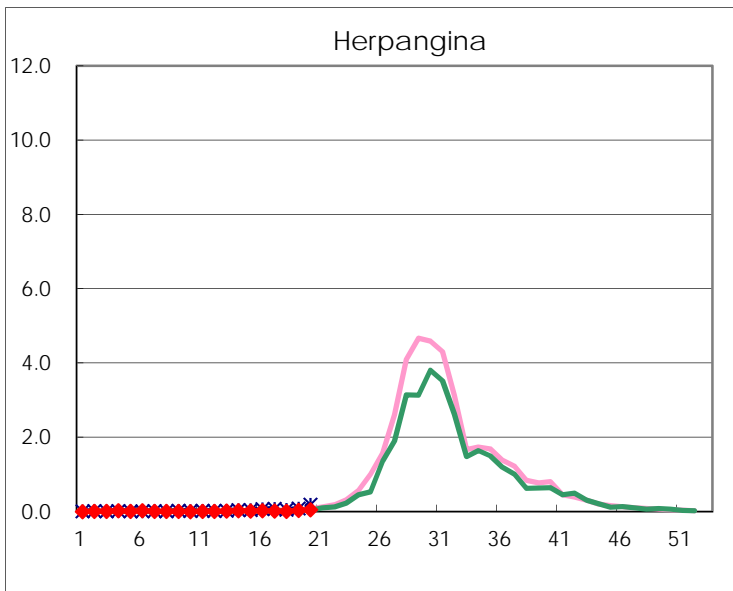
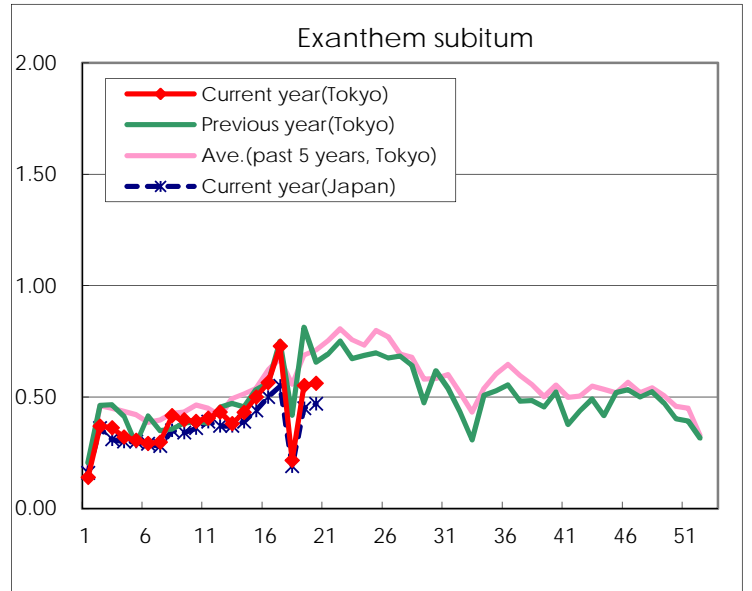
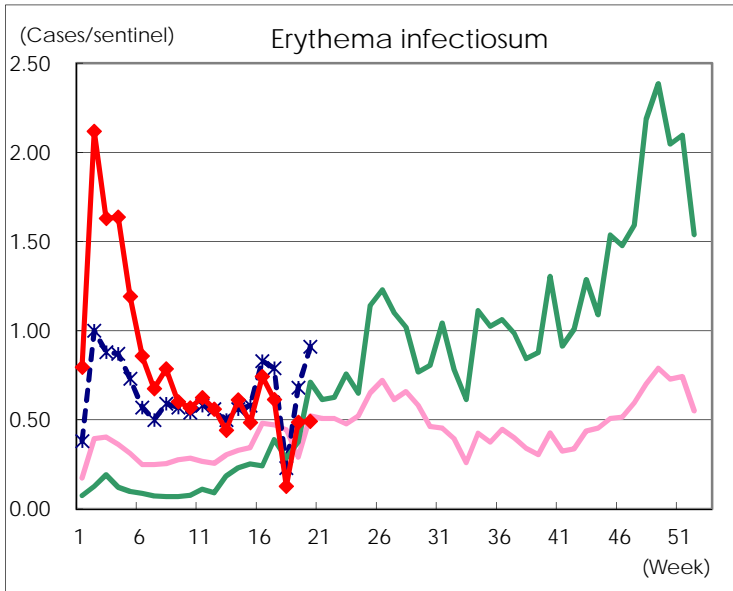
Number of patients with the diseases to be reported
by the designated clinics and hospitals

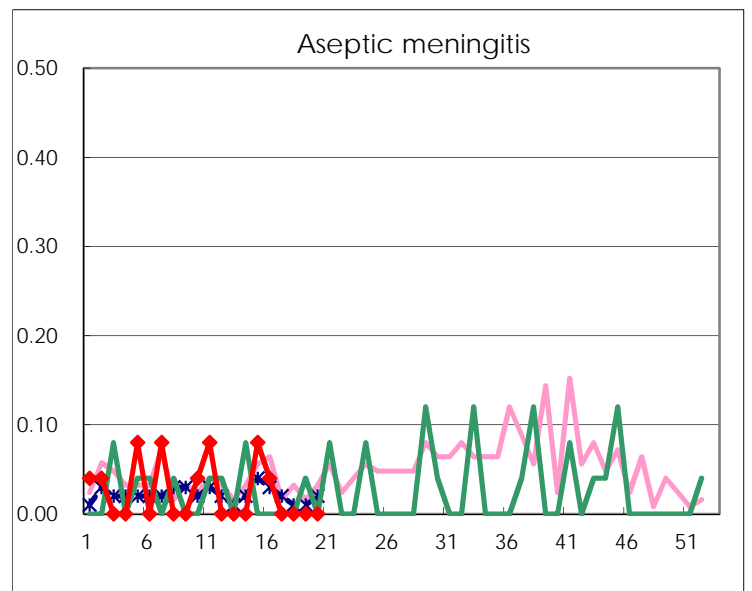
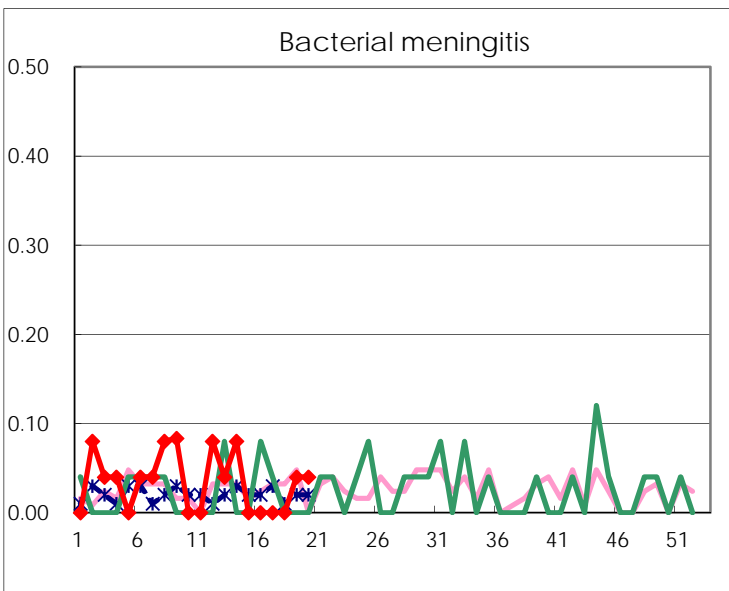
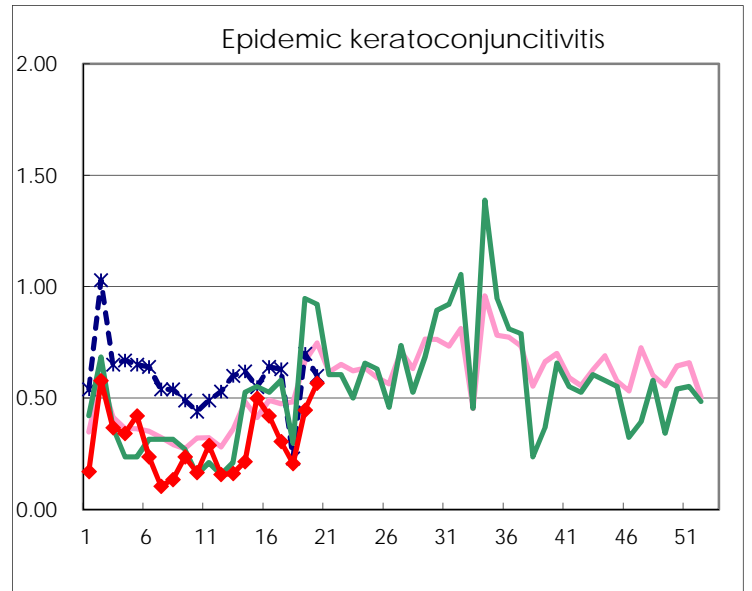
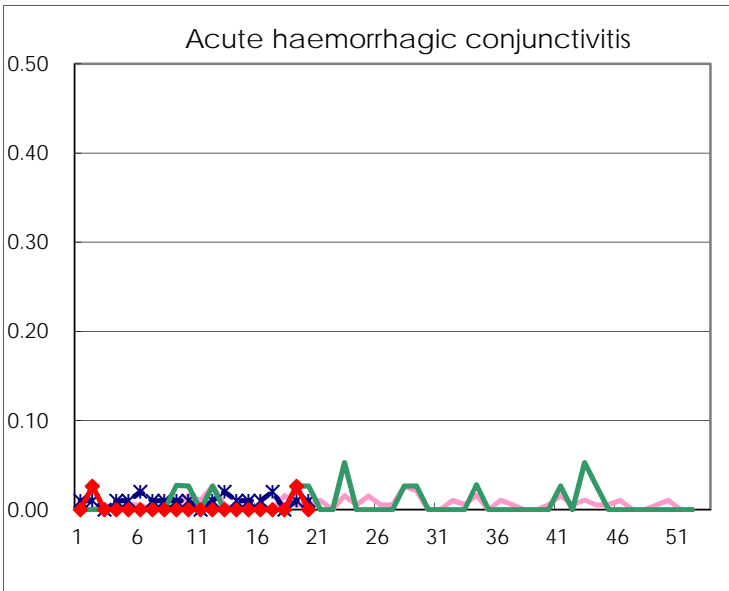
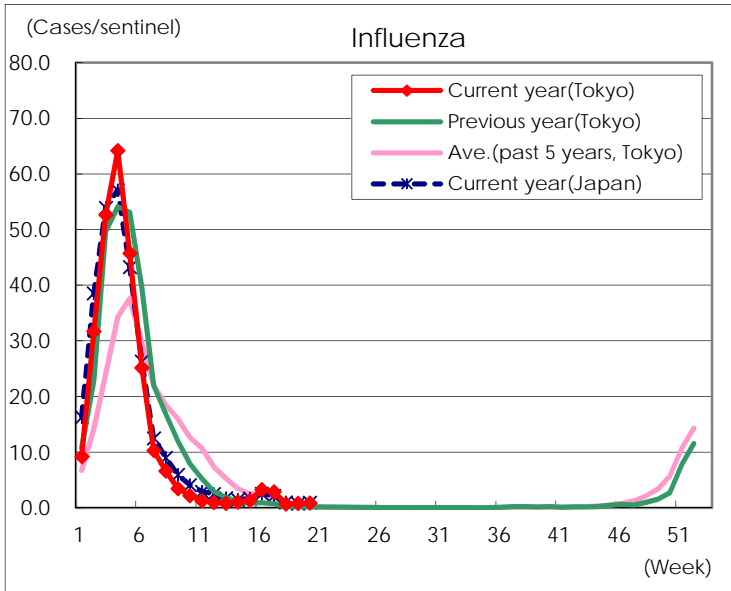
Diseases	Tokyo				
	17th	18th	19th	20th	/sentinel
Respiratory syncytial virus infection	99	30	32	55	0.21
Pharyngoconjunctival fever	66	16	89	82	0.32
Group A streptococcal pharyngitis	767	163	534	831	3.22
Infectious gastroenteritis	2,574	468	1,559	2,095	8.12
Chickenpox	122	26	209	106	0.41
Hand, foot, and mouth disease	14	12	34	83	0.32
Erythema infectiosum	158	26	126	127	0.49
Exanthem subitum	187	44	143	145	0.56
Herpangina	4	1	8	14	0.05
Mumps	18	8	21	20	0.08
Kawasaki disease	2	1	1	3	0.01
Cold with exanthems	12	6	16	15	0.06
Influenza	1,191	229	337	361	0.88
Acute hemorrhagic conjunctivitis			1		
Epidemic keratoconjunctivitis	11	6	17	21	0.57
Bacterial meningitis			1	1	0.04
Aseptic meningitis					
<i>Mycoplasma pneumoniae</i>	1	1	2	1	0.04
Chlamydial pneumonia (excluding psittacosis)	2	1	2		
Infectious gastroenteritis (only by Rotavirus)	13	7	14	10	0.40
Influenza-Associated Hospitalizations	7	2	2		

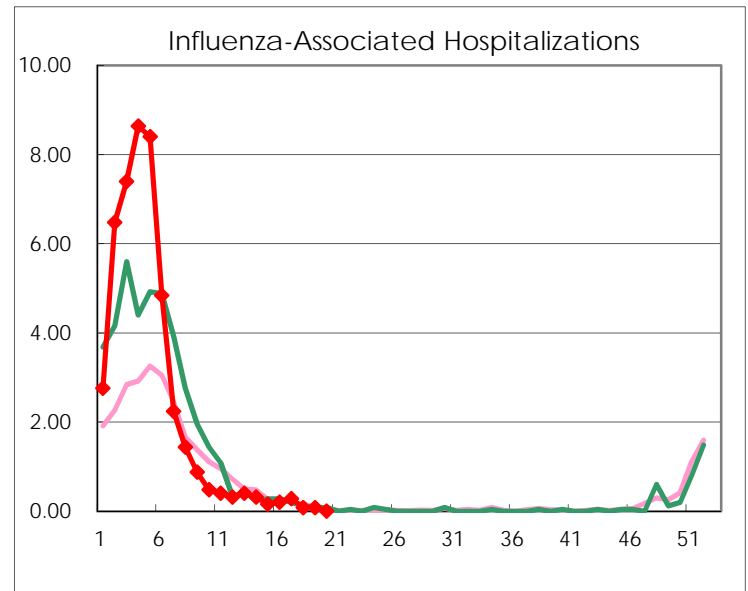
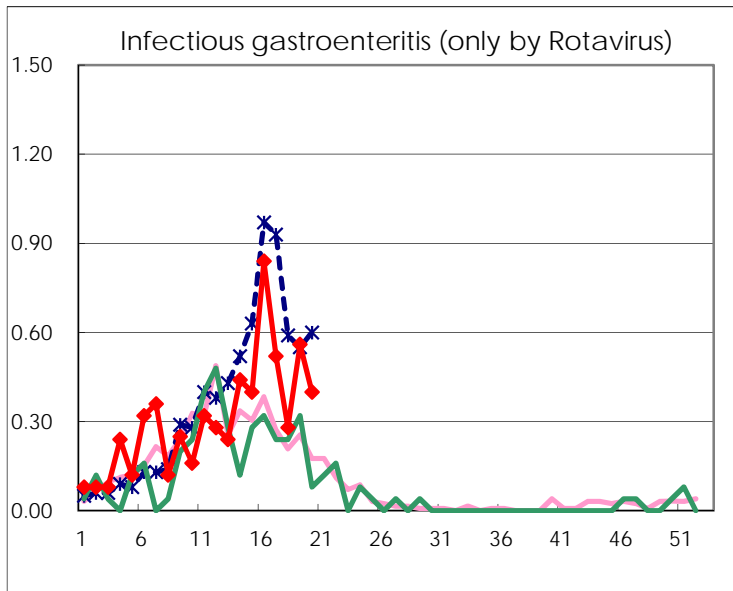
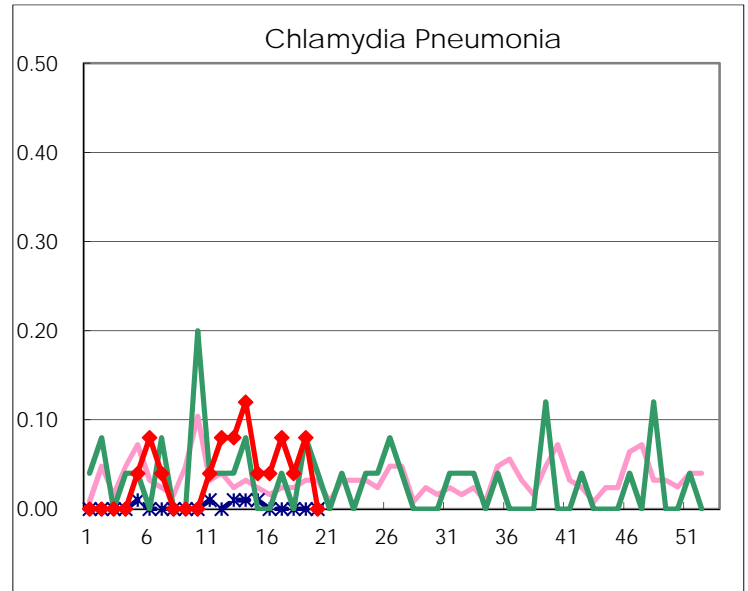
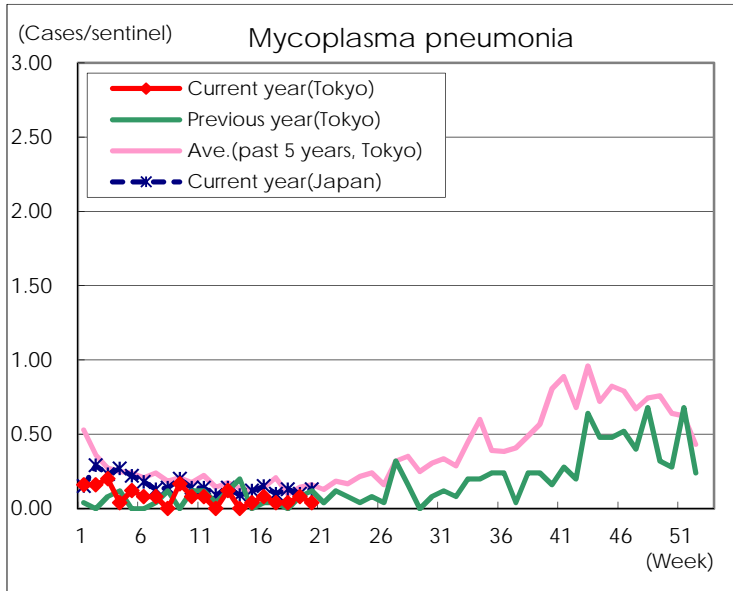
(Blank means 0.)

Disease Trend Graph (weekly reported cases per sentinel in comparison)









Number of sentinel facilities for weekly reporting		
Types of sentinels	Number of sentinels	Sentinels having reported
Pediatric	264	258
Influenza	419	412
Ophthalmic	39	37
Specially-designated	25	25