

**6 June 2019 / Number 22**

## Surveillance System in Tokyo, Japan

The infectious diseases which all physicians must report

All physicians must report to health centers the incidence of the diseases which are shown at page one. Health centers electronically report the individual cases to Tokyo Metropolitan Infectious Disease Surveillance Center.

The infectious diseases required to be reported by the sentinels

The numbers of patients who visit the sentinel clinics or hospitals during a week are reported to health centers in Tokyo. And they electronically report the numbers to Tokyo Metropolitan Infectious Disease Surveillance Center. We have about 500 sentinel clinics and hospitals in Tokyo.

Tokyo Metropolitan Institute of Public Health

TEL:81-3-3363-3213 FAX:81-3-5332-7365

e-mail:[www@tokyo-eiken.go.jp](mailto:www@tokyo-eiken.go.jp)

URL:[idsc.tokyo-eiken.go.jp/](http://idsc.tokyo-eiken.go.jp/)

---

Number of patients with the diseases which all physicians must report

Category	Diseases	Tokyo					Japan	
		19th	20th	21st	22nd	Cum 2019	22nd	Cum 2019
I	Ebola hemorrhagic fever							
	Crimean-Congo hemorrhagic fever							
	Smallpox							
	South American hemorrhagic fever							
	Plague							
	Marburg disease							
	Lassa fever							
II	Acute poliomyelitis							
	Tuberculosis	46	68	64	60	1,249	342	8,560
	Diphtheria							
	Severe Acute Respiratory Syndrome(SARS)							
	Middle East Respiratory Syndrome (MERS)							
	Avian influenza H5N1							
	Avian influenza H7N9							
III	Cholera			1		2		3
	Shigellosis	1		1	1	10	2	38
	Enterohemorrhagic Escherichia coli infection	1	6	8	2	59	50	565
	Typhoid fever			1		2	1	16
	Paratyphoid fever	1				3	1	10
IV	Hepatitis E	4	3	5	3	58	14	213
	West Nile fever							
	Hepatitis A	5	8	6	4	60	11	201
	Echinococcosis						1	5
	Yellow fever							
	Psittacosis	1				3	1	11
	Omsk hemorrhagic fever							
	Relapsing fever							
	Kyasanur forest disease							
	Q fever							
	Rabies							
	Coccidioidomycosis							1
	Monkeypox							
	Zika virus infection							
	Severe Fever with Thrombocytopenia Syndrome		1			1	2	27
	Hemorrhagic fever with renal syndrome							
	Western equine encephalitis							
	Tick-borne encephalitis							
	Anthrax							
	Chikungunya fever			1		1		3
	Scrub typhus(Tsutsugamushi disease)						6	61
	Dengue fever	5	4	3	1	44	5	132
	Eastern equine encephalitis							
	Avian influenza (excluding H5N1 and H7N9)							
	Nipah virus infection							
	Japanese spotted fever						2	41
	Japanese encephalitis							
	Hantavirus pulmonary syndrome							
	Herpes B virus infection							
	Glanders							
	Brucellosis							1
	Venezuelan equine encephalitis							
	Hendra virus infection							
	Epidemic typhus							
Botulism							1	
Malaria	1		1		5		18	
Tularemia								
Lyme disease							1	
Lyssavirus infection(excluding rabies)								
Rift valley fever								
Melioidosis								
Legionellosis	8	4	1	4	60	43	596	
Leptospirosis					1		4	
Rocky mountain spotted fever								

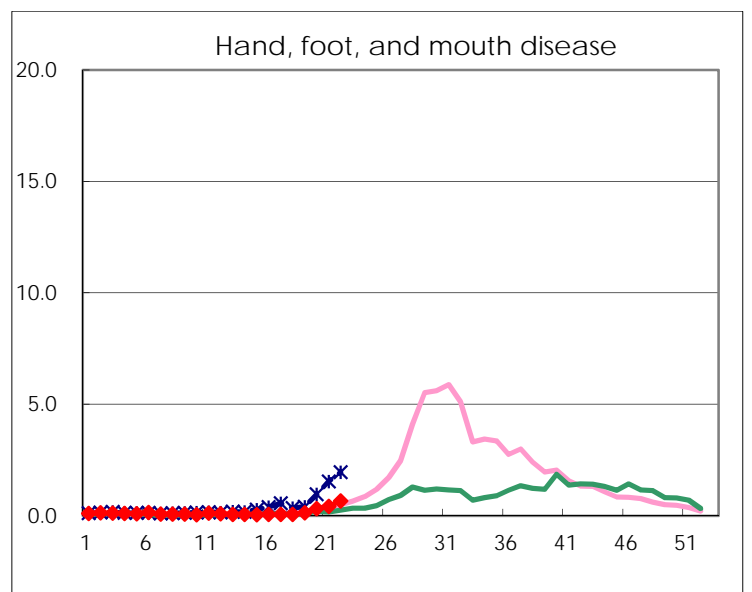
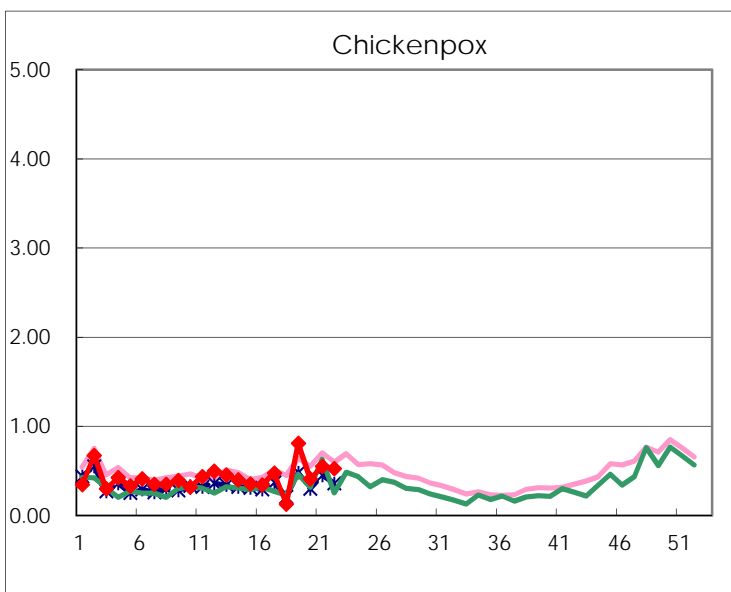
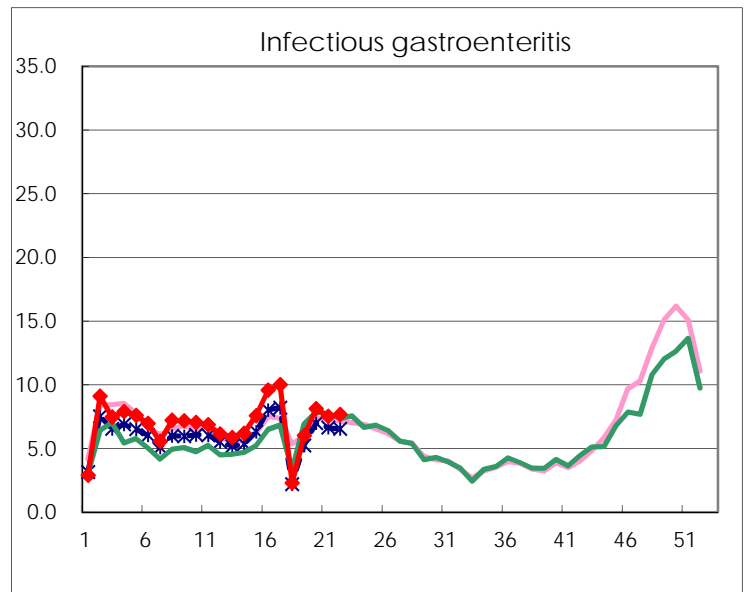
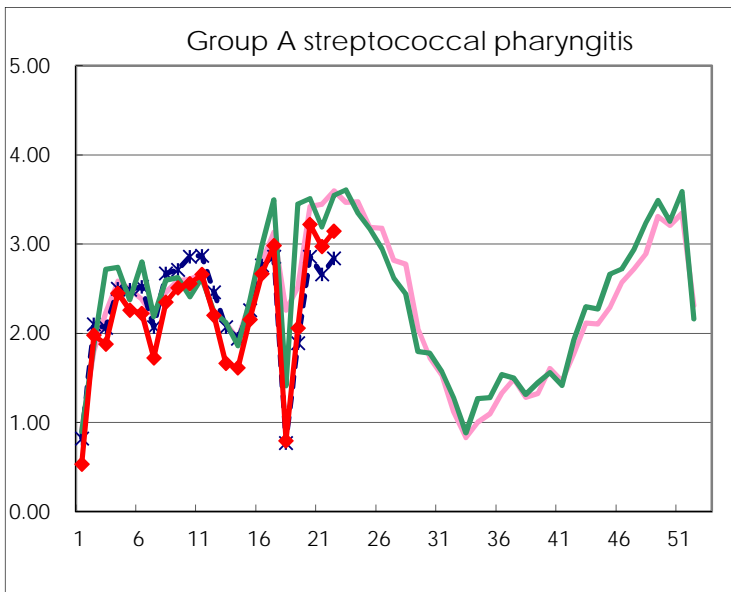
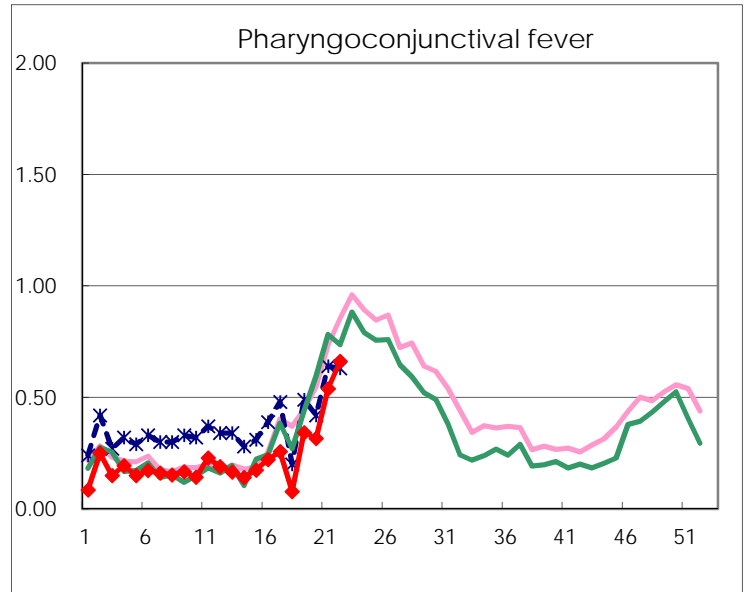
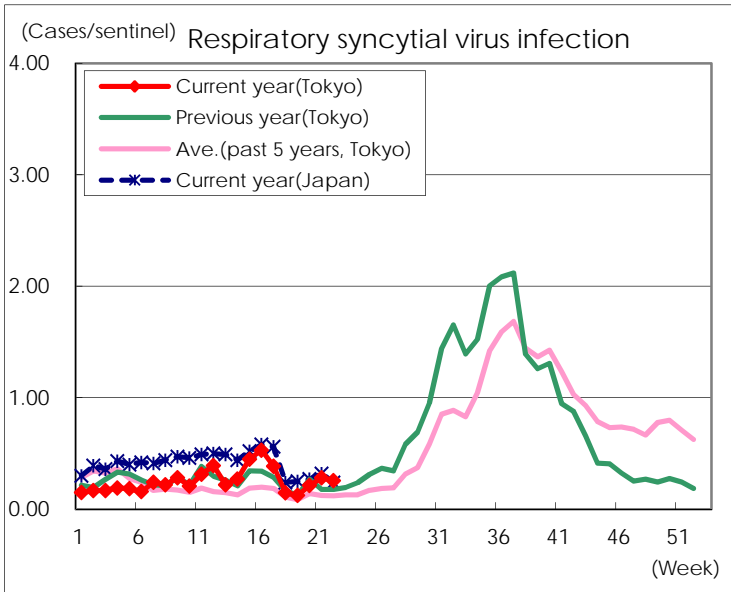
Category	Diseases	Tokyo					Japan	
		19th	20th	21st	22nd	Cum 2019	22nd	Cum 2019
V	Amebiasis	2	7	1	3	76	11	366
	Viral hepatitis(excluding hepatitis A and E)	1		1	1	30	5	128
	CRE infection	2	3	5	4	84	26	781
	Acute Flaccid Paralysis (excluding Acute poliomyelitis)		1		1	3	3	29
	Acute encephalitis(excluding JE and WNE)	1		1	2	44	5	435
	Cryptosporidiosis					2		7
	Creutzfeldt-Jakob disease				1	10	3	69
	Severe invasive streptococcal infections(TSLs)	2	3	2	2	47	10	391
	Acquired immunodeficiency syndrome (AIDS)	4	4	7	10	164	16	466
	Giardiasis					3	1	18
	Invasive <i>Haemophilus influenzae</i> disease	4	2	1	4	42	13	272
	Invasive meningococcal disease					1	2	22
	Invasive pneumococcal disease	15	11	8	11	206	44	1,759
	Varicella (limited to hospitalized case)	2	3	2		28	6	194
	Congenital rubella syndrome					1		2
	Syphilis	38	41	36	44	720	91	2,647
	Disseminated cryptococcosis			1		7	4	63
	Tetanus	1			1	3	2	37
	Vancomycin-resistant <i>S. aureus</i> infection							
	Vancomycin-resistant <i>Enterococcus</i> infection					3		30
	Pertussis	23	38	19	13	697	223	6,556
Rubella	27	32	23	11	576	30	1,658	
Measles	7	17	3	1	99	24	590	
MDRA infection					2		15	

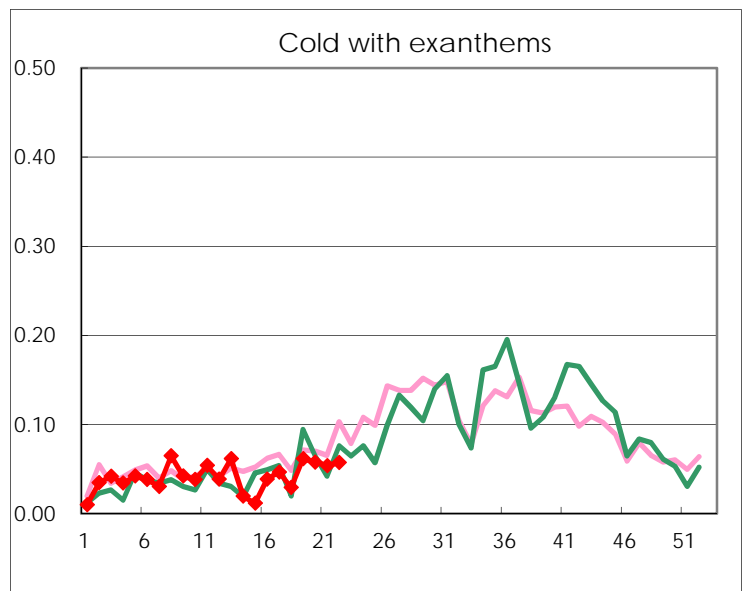
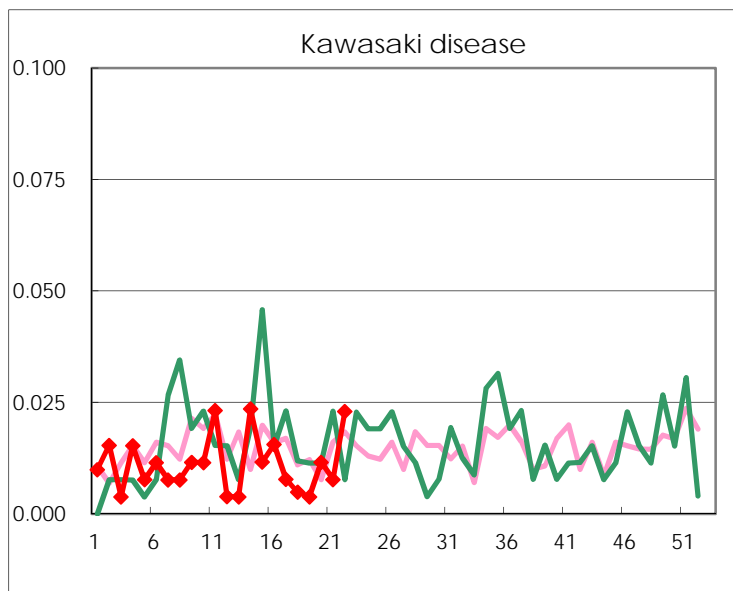
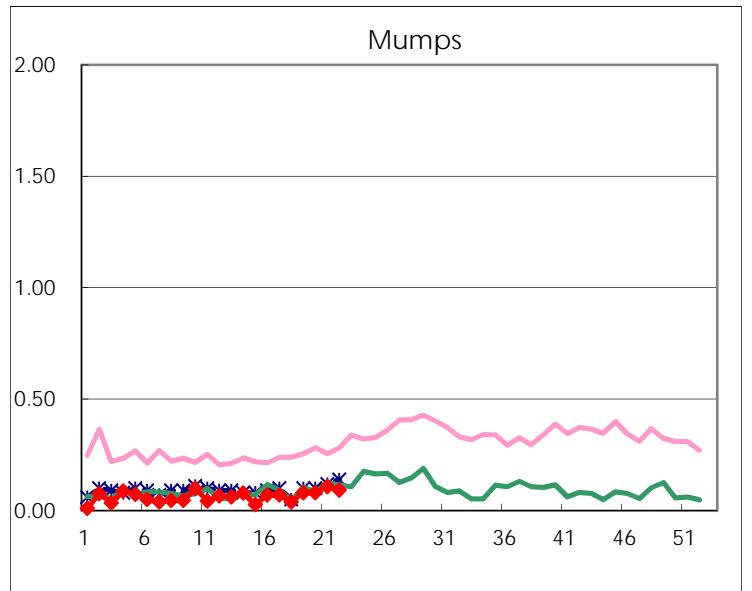
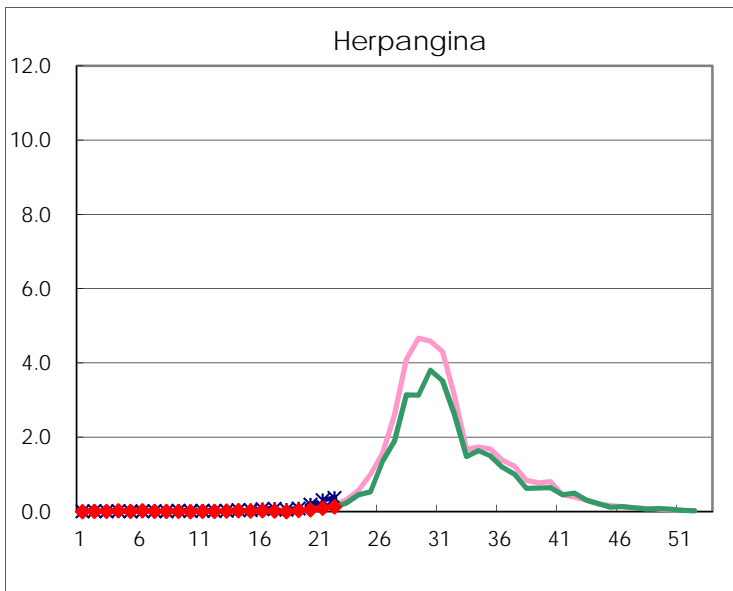
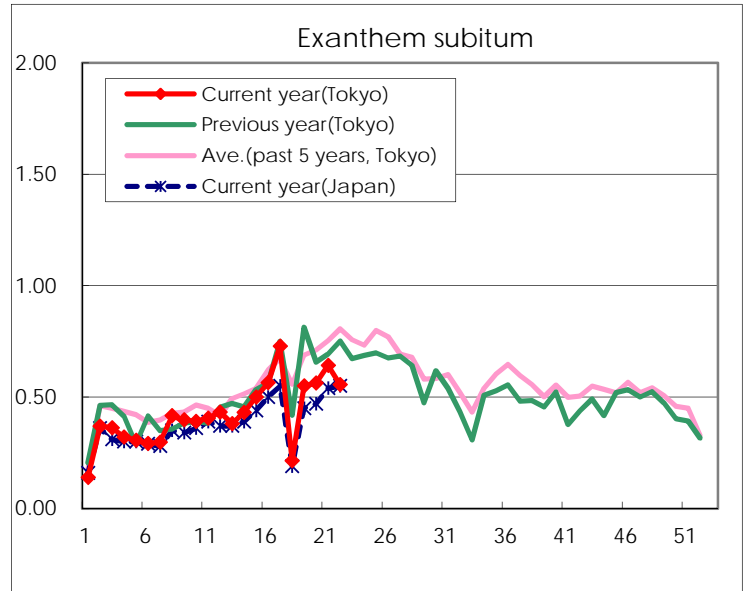
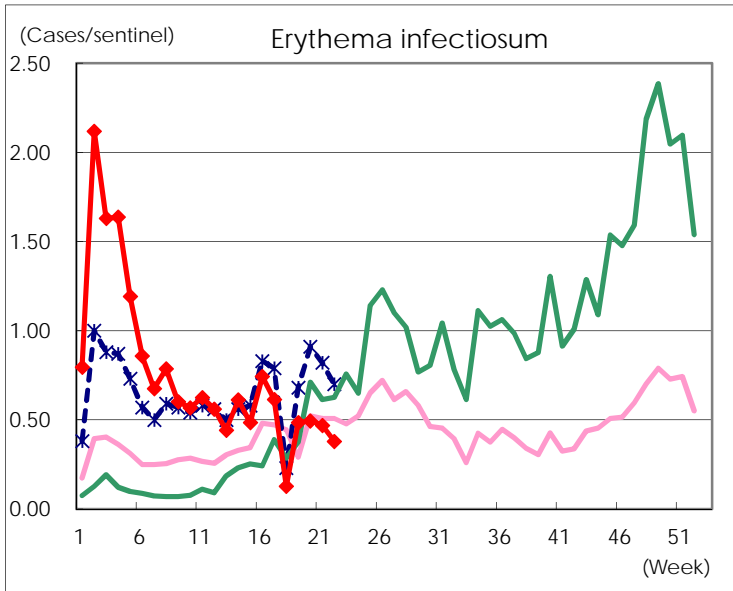
Number of patients with the diseases to be reported  
by the designated clinics and hospitals

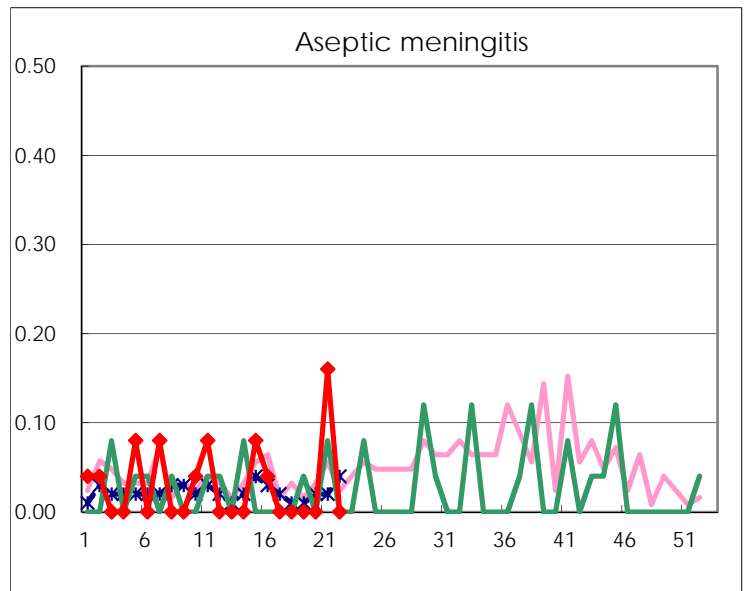
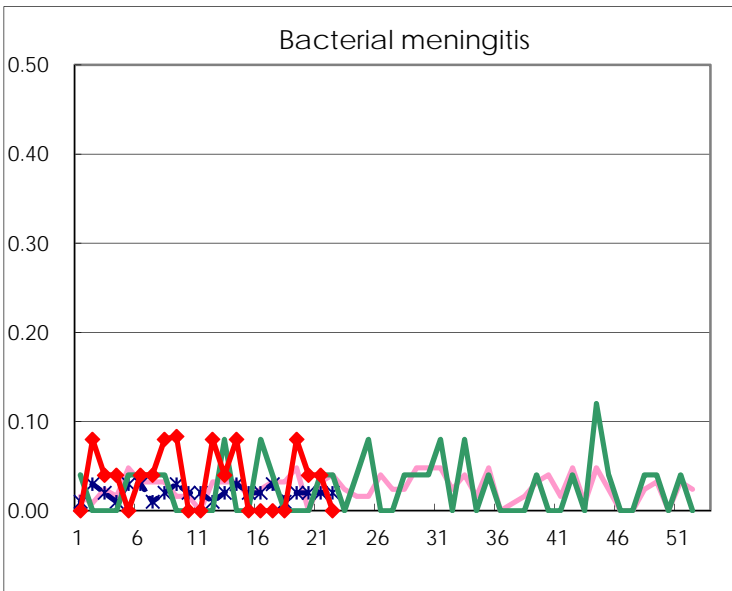
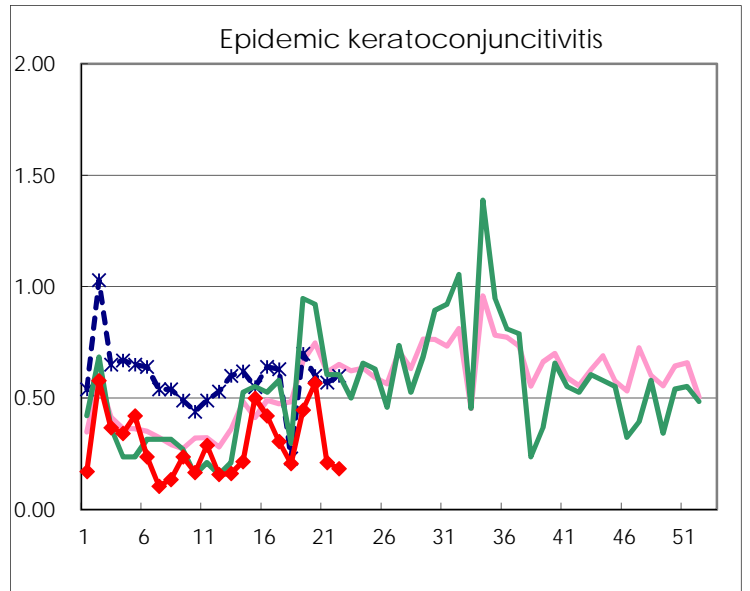
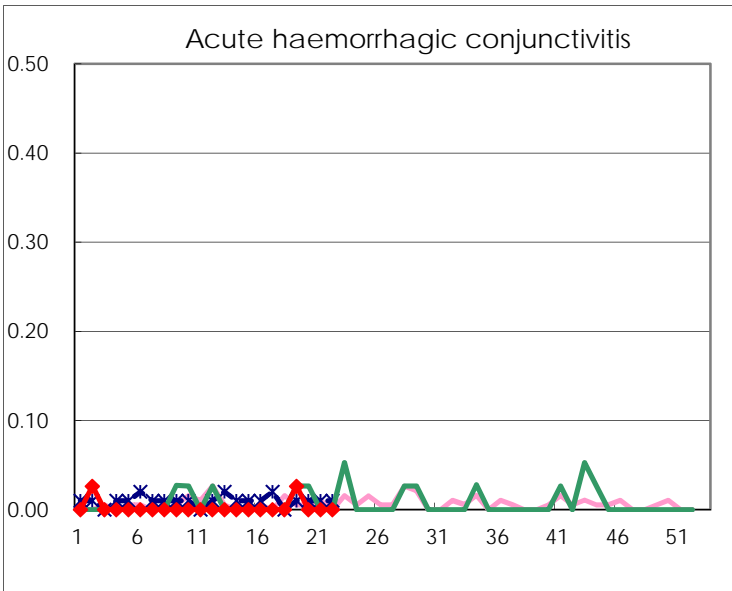
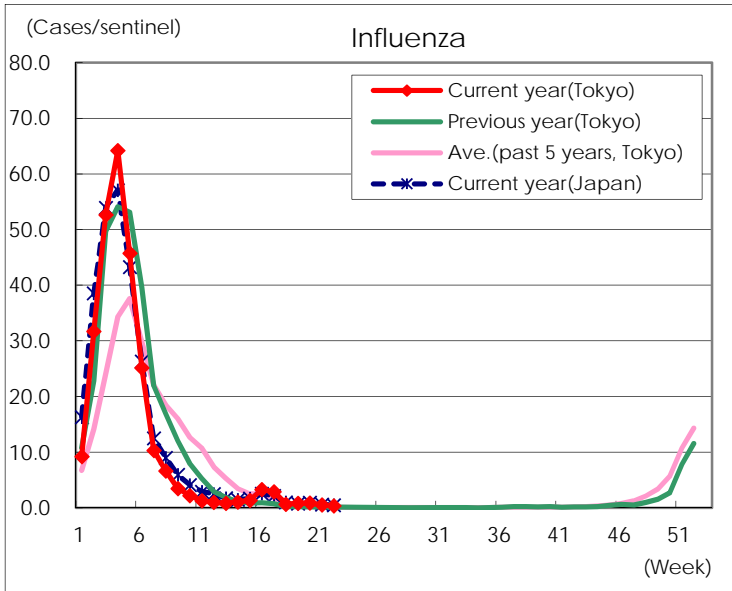
Diseases	Tokyo				
	19th	20th	21st	22nd	/sentinel
Respiratory syncytial virus infection	32	55	73	67	0.26
Pharyngoconjunctival fever	89	82	140	173	0.66
Group A streptococcal pharyngitis	535	834	773	821	3.15
Infectious gastroenteritis	1,562	2,104	1,953	2,000	7.66
Chickenpox	210	106	143	137	0.52
Hand, foot, and mouth disease	34	83	109	173	0.66
Erythema infectiosum	126	128	122	99	0.38
Exanthem subitum	143	146	167	145	0.56
Herpangina	8	14	24	33	0.13
Mumps	21	21	28	24	0.09
Kawasaki disease	1	3	2	6	0.02
Cold with exanthems	16	15	14	15	0.06
Influenza	337	361	218	143	0.34
Acute hemorrhagic conjunctivitis	1				
Epidemic keratoconjunctivitis	17	21	8	7	0.18
Bacterial meningitis	2	1	1		
Aseptic meningitis			4		
<i>Mycoplasma pneumoniae</i>	2	1	3	2	0.08
Chlamydial pneumonia (excluding psittacosis)	2				
Infectious gastroenteritis (only by Rotavirus)	14	10	8	6	0.24
Influenza-Associated Hospitalizations	2		1	2	0.08

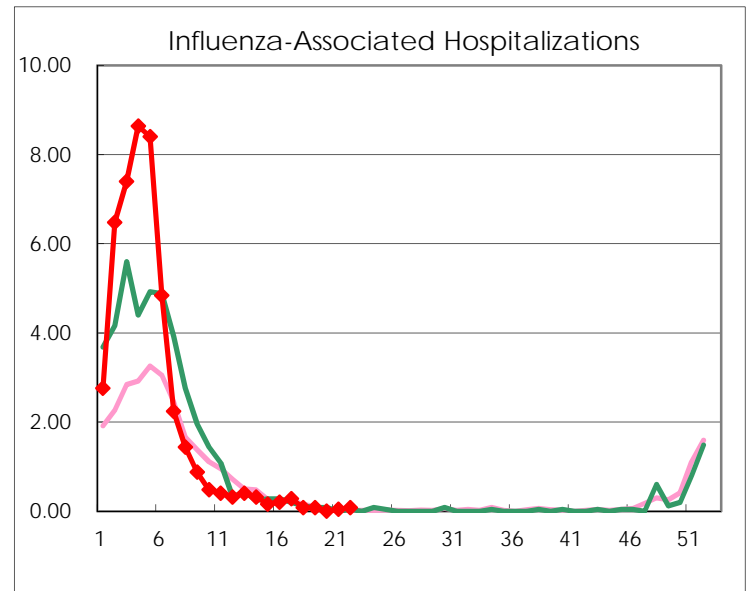
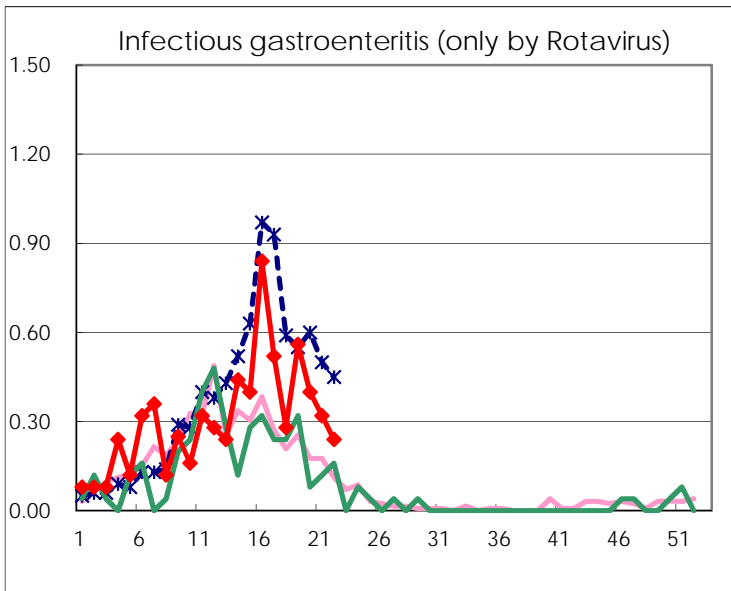
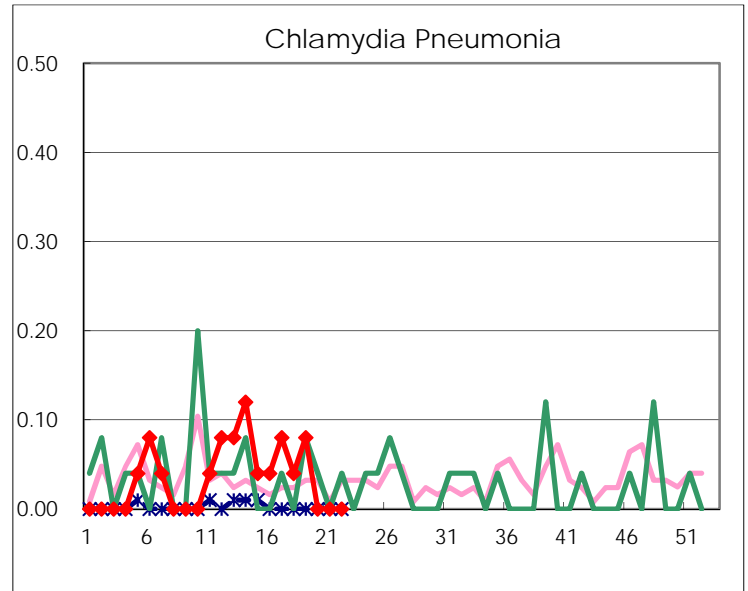
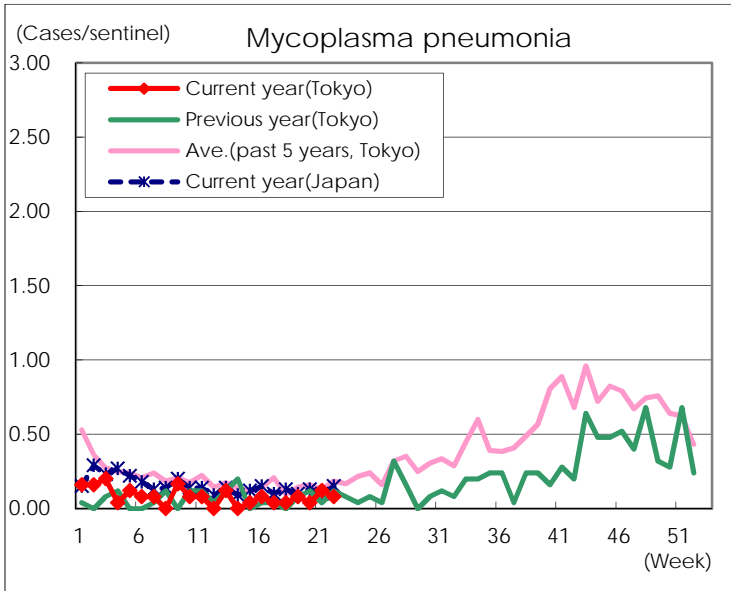
( Blank means 0. )

# Disease Trend Graph (weekly reported cases per sentinel in comparison)









Number of sentinel facilities for weekly reporting		
Types of sentinels	Number of sentinels	Sentinels having reported
Pediatric	264	261
Influenza	419	415
Ophthalmic	39	38
Specially-designated	25	25