

13 June 2019 / Number 23

Surveillance System in Tokyo, Japan

The infectious diseases which all physicians must report

All physicians must report to health centers the incidence of the diseases which are shown at page one. Health centers electronically report the individual cases to Tokyo Metropolitan Infectious Disease Surveillance Center.

The infectious diseases required to be reported by the sentinels

The numbers of patients who visit the sentinel clinics or hospitals during a week are reported to health centers in Tokyo. And they electronically report the numbers to Tokyo Metropolitan Infectious Disease Surveillance Center. We have about 500 sentinel clinics and hospitals in Tokyo.

Tokyo Metropolitan Institute of Public Health

TEL:81-3-3363-3213 FAX:81-3-5332-7365

e-mail:www@tokyo-eiken.go.jp

URL:idsc.tokyo-eiken.go.jp/

Number of patients with the diseases which all physicians must report

Category	Diseases	Tokyo					Japan	
		20th	21st	22nd	23rd	Cum 2019	23rd	Cum 2019
I	Ebola hemorrhagic fever							
	Crimean-Congo hemorrhagic fever							
	Smallpox							
	South American hemorrhagic fever							
	Plague							
	Marburg disease							
	Lassa fever							
II	Acute poliomyelitis							
	Tuberculosis	69	64	67	54	1,310	321	8,966
	Diphtheria							
	Severe Acute Respiratory Syndrome(SARS)							
	Middle East Respiratory Syndrome (MERS)							
	Avian influenza H5N1							
	Avian influenza H7N9							
III	Cholera		1			2		3
	Shigellosis		1	1		10	3	41
	Enterohemorrhagic Escherichia coli infection	6	8	2	5	64	64	639
	Typhoid fever		1			2		16
	Paratyphoid fever					3		10
IV	Hepatitis E	3	5	3	2	60	9	222
	West Nile fever							
	Hepatitis A	8	6	4	2	62	6	210
	Echinococcosis							5
	Yellow fever							
	Psittacosis					3		11
	Omsk hemorrhagic fever							
	Relapsing fever							
	Kyasanur forest disease							
	Q fever							
	Rabies							
	Coccidioidomycosis							1
	Monkeypox							
	Zika virus infection							
	Severe Fever with Thrombocytopenia Syndrome	1				1	2	31
	Hemorrhagic fever with renal syndrome							
	Western equine encephalitis							
	Tick-borne encephalitis							
	Anthrax							
	Chikungunya fever		1			1		3
	Scrub typhus(Tsutsugamushi disease)						5	67
	Dengue fever	4	3	1	1	45	1	133
	Eastern equine encephalitis							
	Avian influenza (excluding H5N1 and H7N9)							
	Nipah virus infection							
	Japanese spotted fever						2	47
	Japanese encephalitis							
	Hantavirus pulmonary syndrome							
	Herpes B virus infection							
	Glanders							
	Brucellosis							1
	Venezuelan equine encephalitis							
	Hendra virus infection							
	Epidemic typhus							
Botulism							1	
Malaria		1			5		19	
Tularemia								
Lyme disease						1	2	
Lyssavirus infection(excluding rabies)								
Rift valley fever								
Melioidosis								
Legionellosis	4	1	4	5	65	42	643	
Leptospirosis					1		4	
Rocky mountain spotted fever								

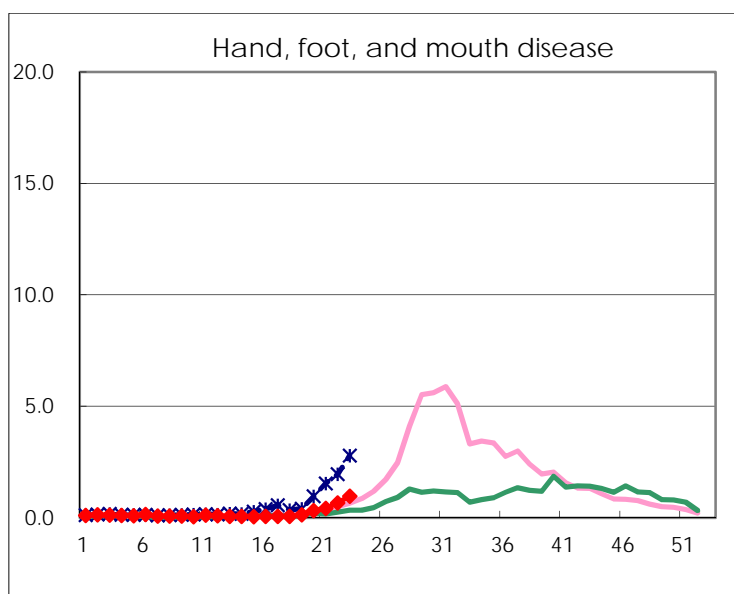
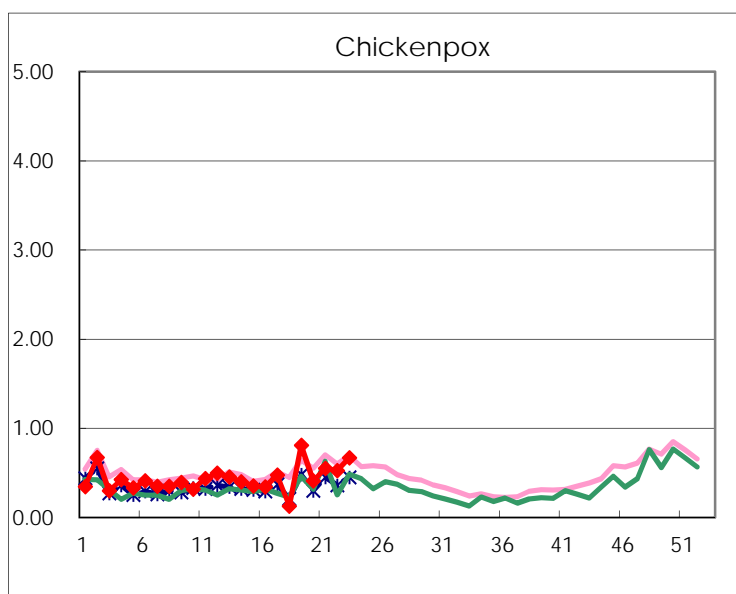
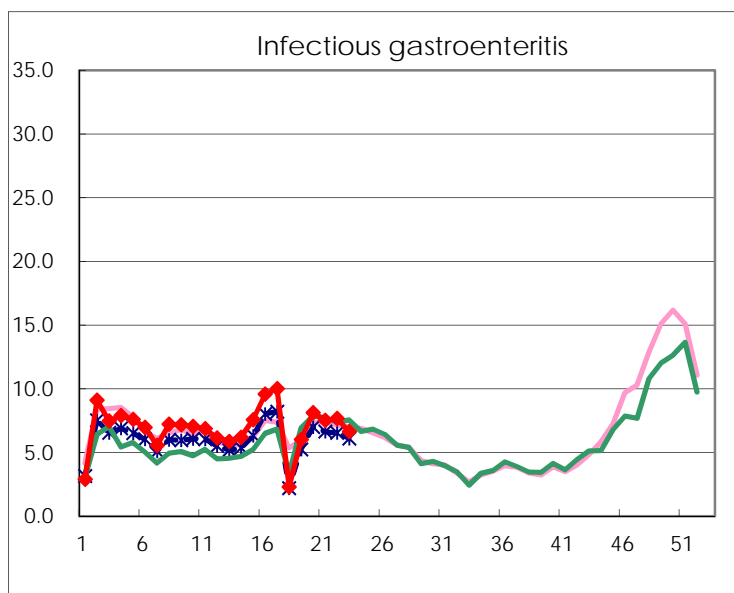
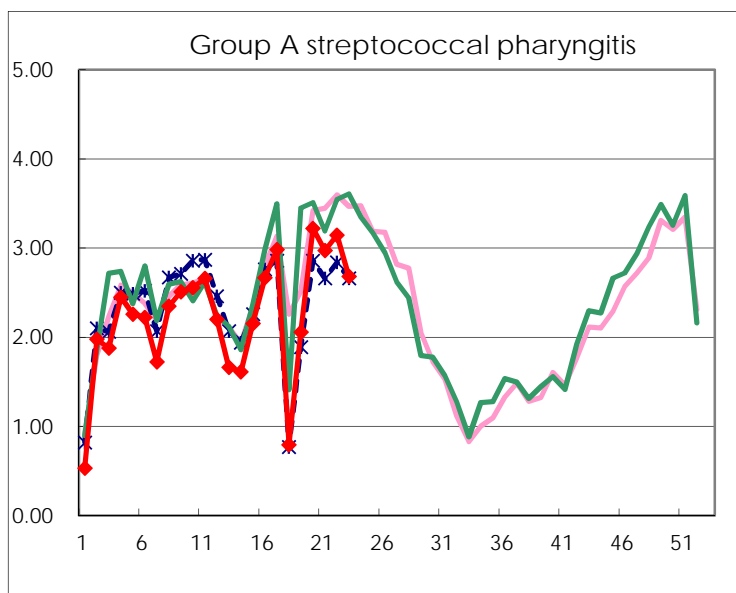
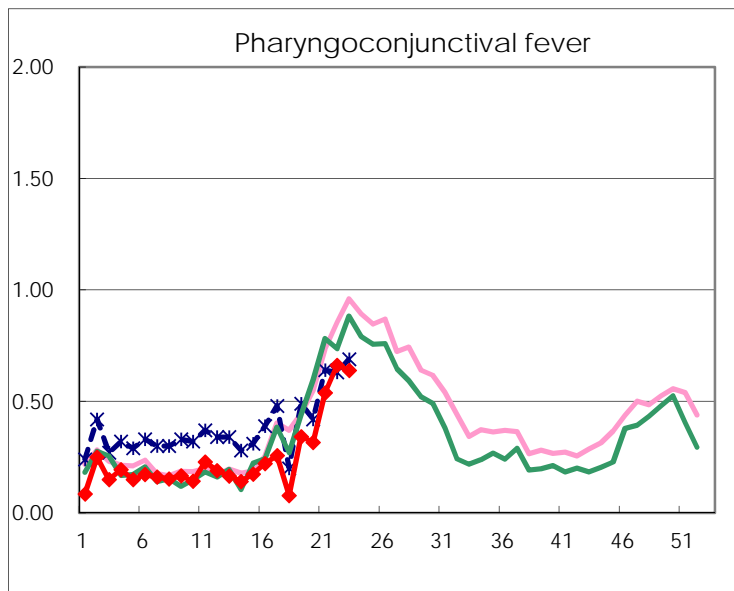
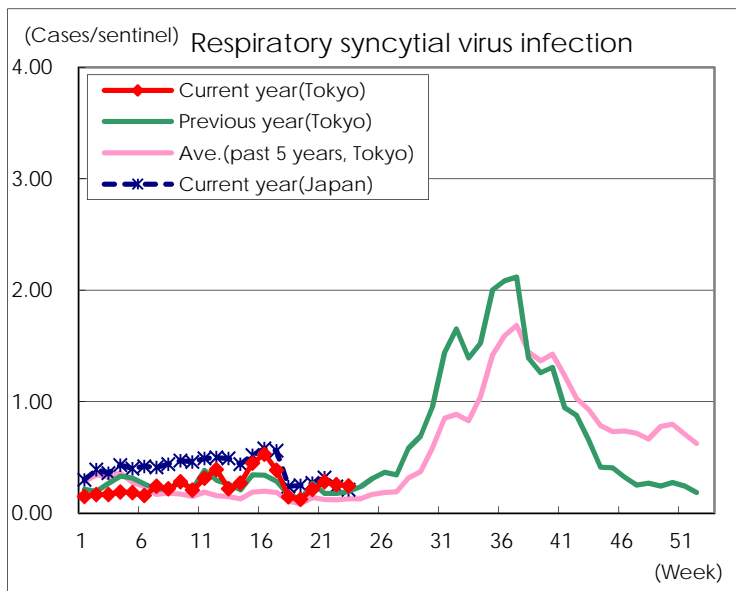
Category	Diseases	Tokyo					Japan	
		20th	21st	22nd	23rd	Cum 2019	23rd	Cum 2019
V	Amebiasis	7	1	3	2	78	7	383
	Viral hepatitis(excluding hepatitis A and E)		1	1	5	35	6	139
	CRE infection	3	5	4		84	37	829
	Acute Flaccid Paralysis (excluding Acute poliomyelitis)	1		1		3	2	31
	Acute encephalitis(excluding JE and WNE)		1	2	2	46	8	446
	Cryptosporidiosis					2		7
	Creutzfeldt-Jakob disease			1	2	12	1	75
	Severe invasive streptococcal infections(TSLs)	3	2	2	3	50	13	408
	Acquired immunodeficiency syndrome (AIDS)	4	7	10	10	174	10	490
	Giardiasis					3		18
	Invasive <i>Haemophilus influenzae</i> disease	2	1	4	1	43	6	279
	Invasive meningococcal disease					1		22
	Invasive pneumococcal disease	11	8	11	5	211	49	1,830
	Varicella (limited to hospitalized case)	3	2			28	4	199
	Congenital rubella syndrome					1		2
	Syphilis	41	36	45	42	763	105	2,803
	Disseminated cryptococcosis		1			7	1	64
	Tetanus			1		3	3	40
	Vancomycin-resistant <i>S. aureus</i> infection							
	Vancomycin-resistant <i>Enterococcus</i> infection				1	4	1	32
	Pertussis	38	19	14	20	718	223	6,895
Rubella	32	23	13	24	602	47	1,718	
Measles	17	3	1		99	16	617	
MDRA infection					2		16	

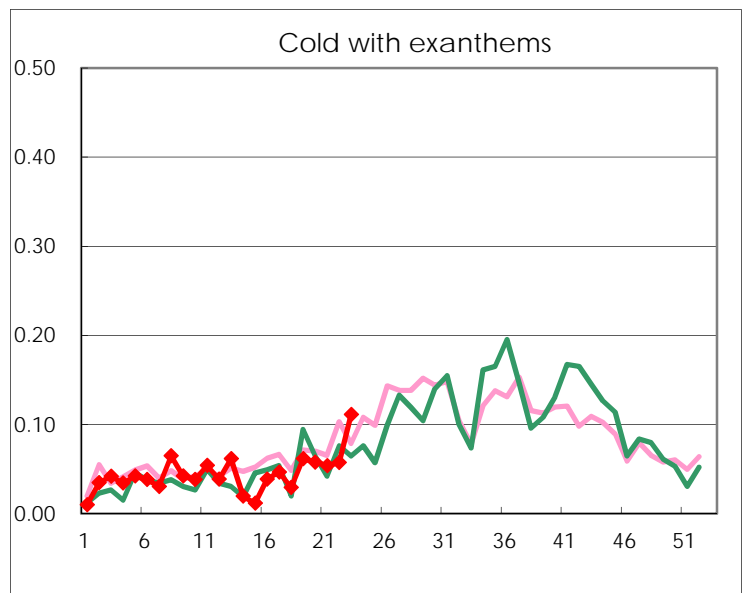
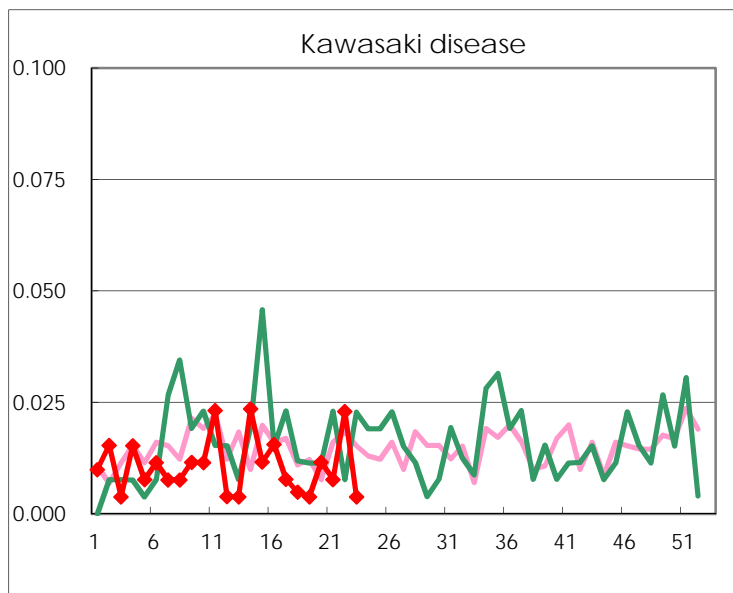
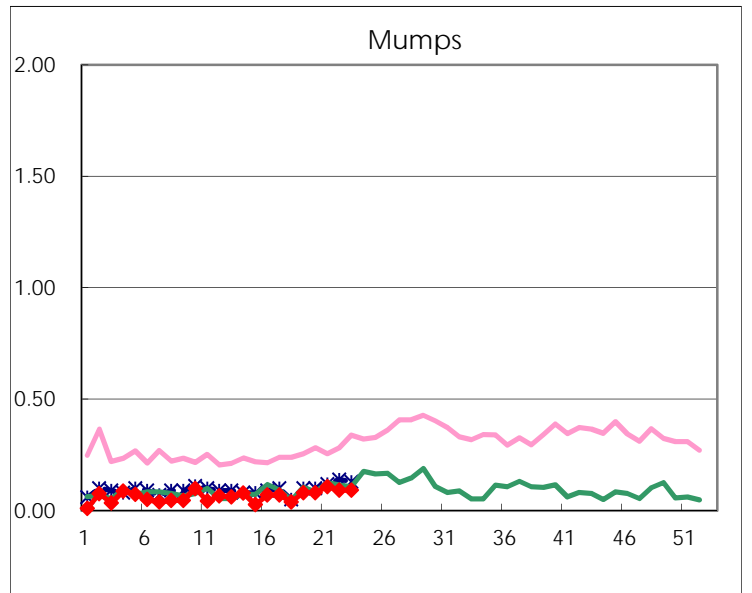
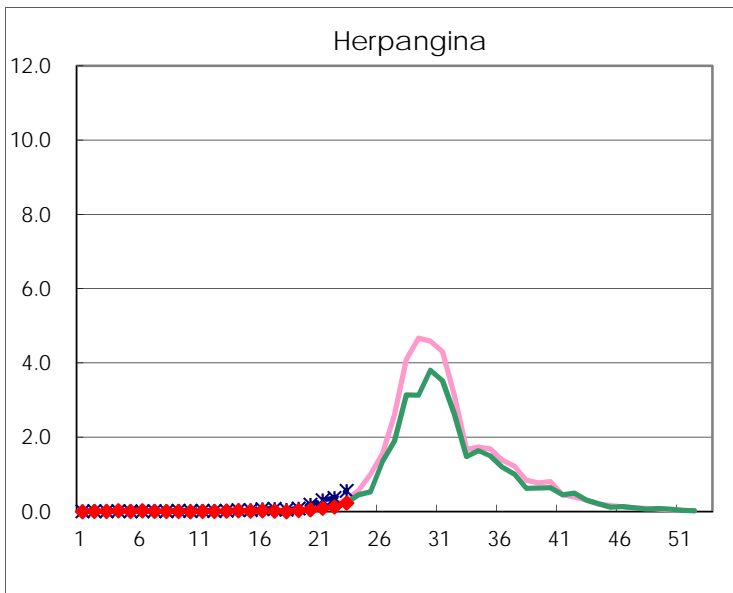
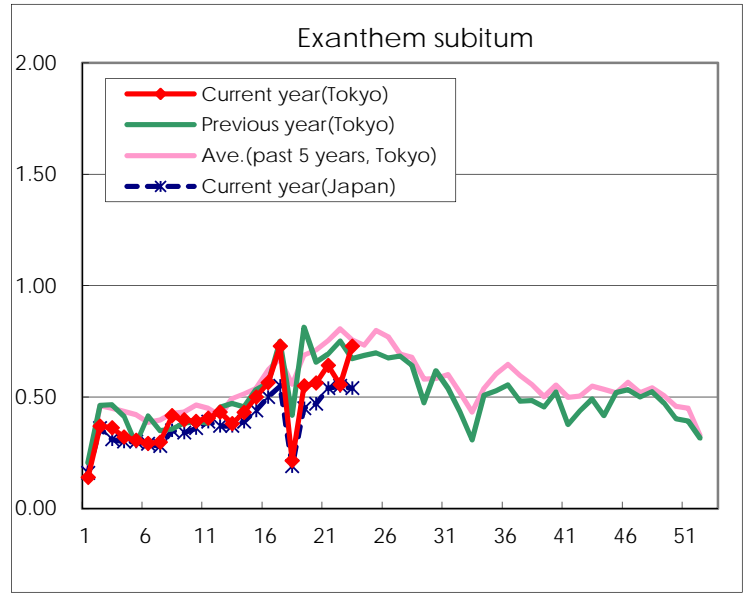
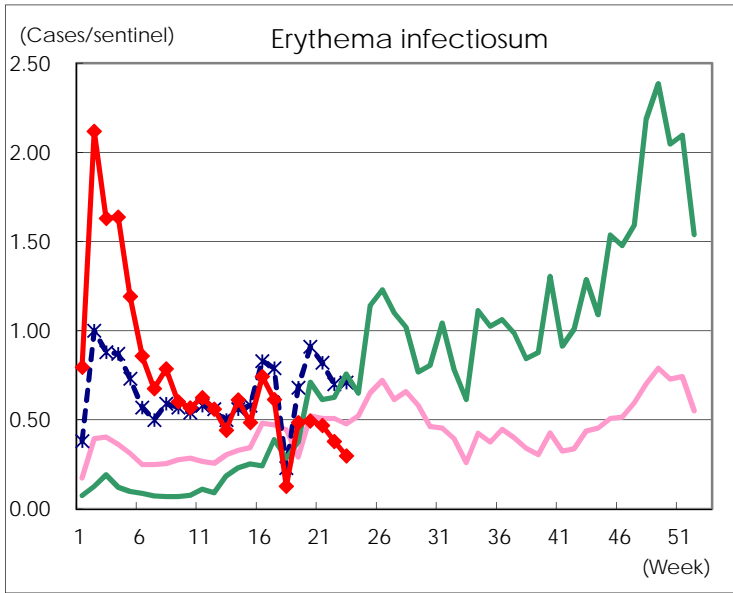
Number of patients with the diseases to be reported
by the designated clinics and hospitals

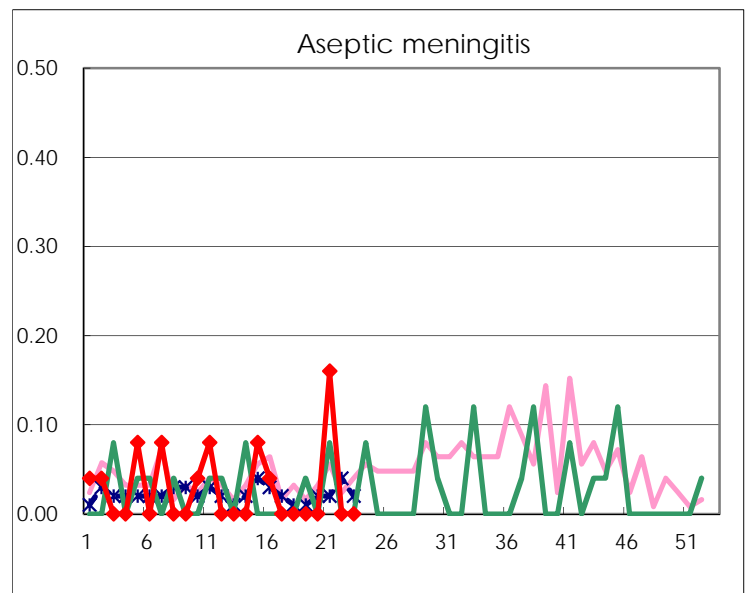
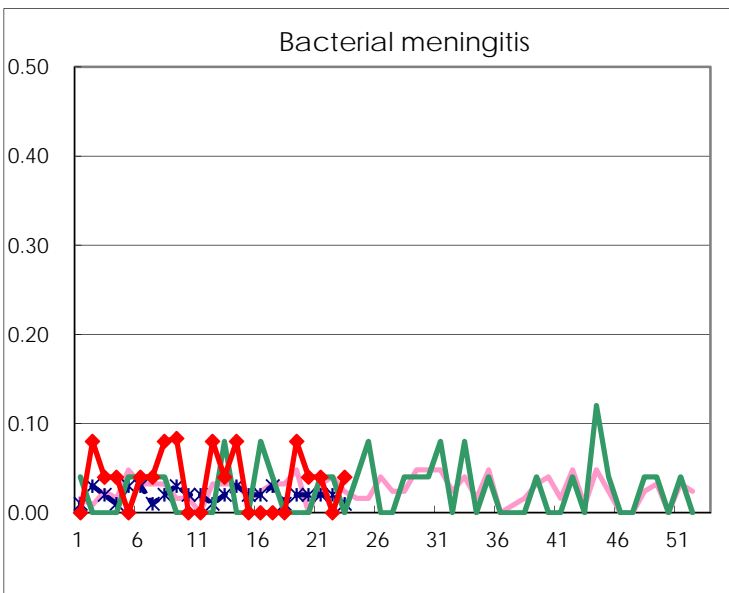
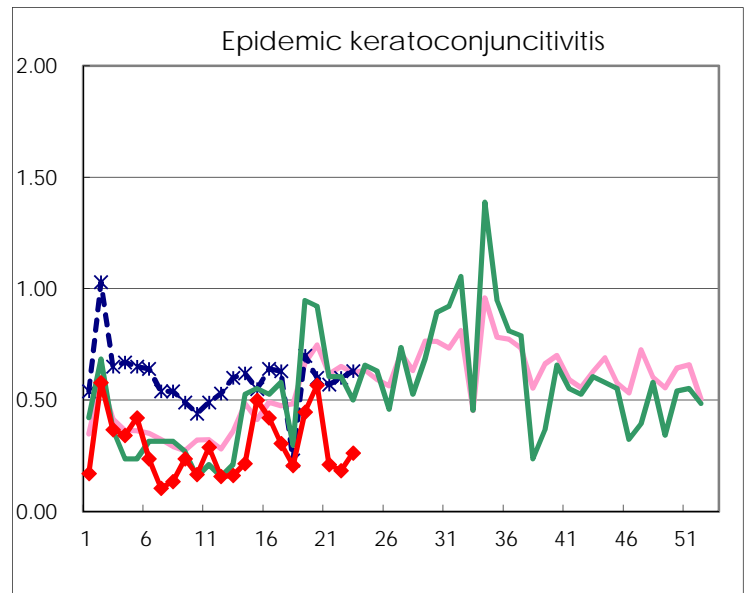
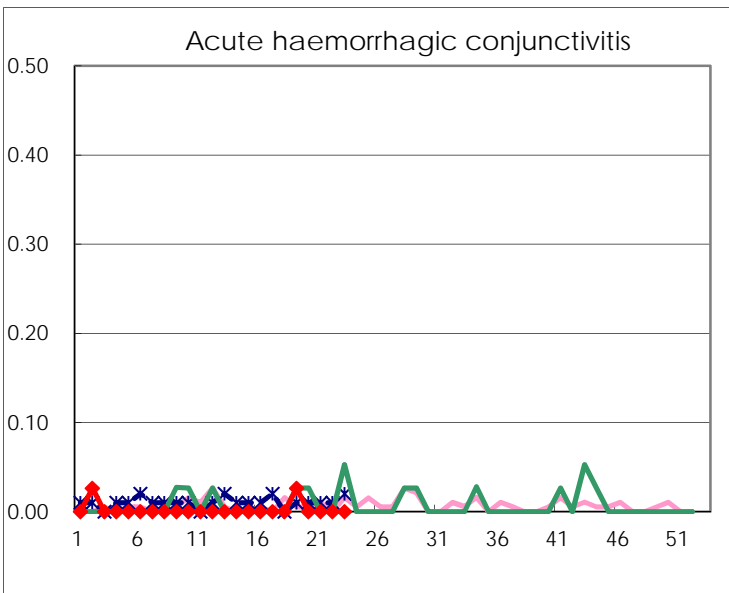
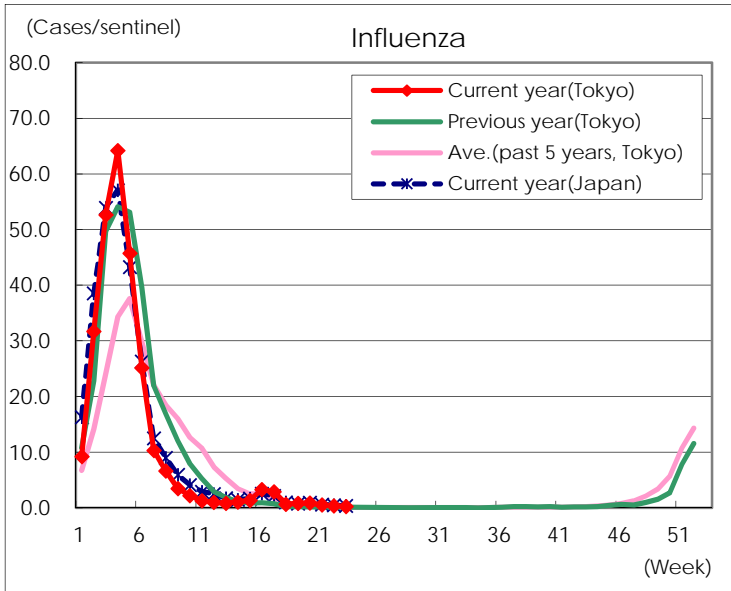
Diseases	Tokyo				
	20th	21st	22nd	23rd	/sentinel
Respiratory syncytial virus infection	55	73	67	64	0.25
Pharyngoconjunctival fever	82	140	173	167	0.64
Group A streptococcal pharyngitis	834	773	821	700	2.68
Infectious gastroenteritis	2,104	1,953	2,000	1,732	6.64
Chickenpox	106	143	137	174	0.67
Hand, foot, and mouth disease	83	109	173	252	0.97
Erythema infectiosum	128	122	99	78	0.30
Exanthem subitum	146	167	145	190	0.73
Herpangina	14	24	33	61	0.23
Mumps	21	28	24	24	0.09
Kawasaki disease	3	2	6	1	
Cold with exanthems	15	14	15	29	0.11
Influenza	361	218	143	110	0.27
Acute hemorrhagic conjunctivitis					
Epidemic keratoconjunctivitis	21	8	7	10	0.26
Bacterial meningitis	1	1		1	0.04
Aseptic meningitis		4			
<i>Mycoplasma pneumoniae</i>	1	3	2	3	0.12
Chlamydial pneumonia (excluding psittacosis)					
Infectious gastroenteritis (only by Rotavirus)	10	8	6	9	0.36
Influenza-Associated Hospitalizations		1	2	3	0.12

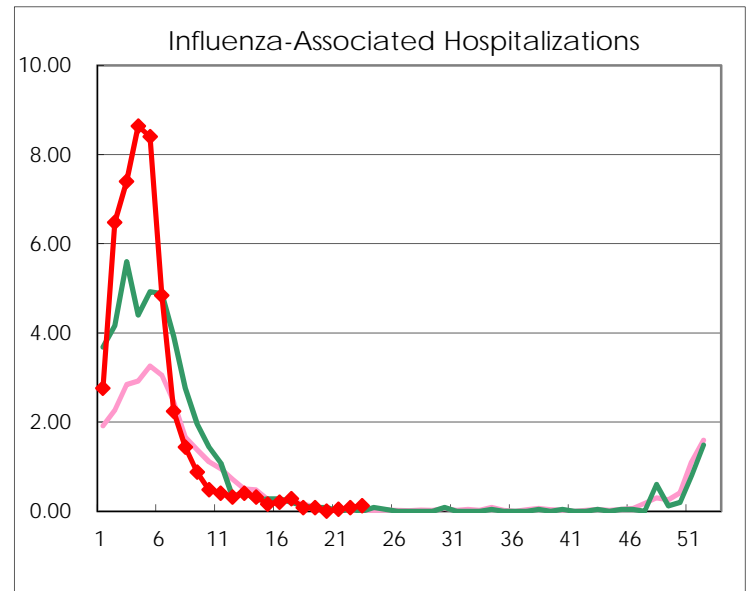
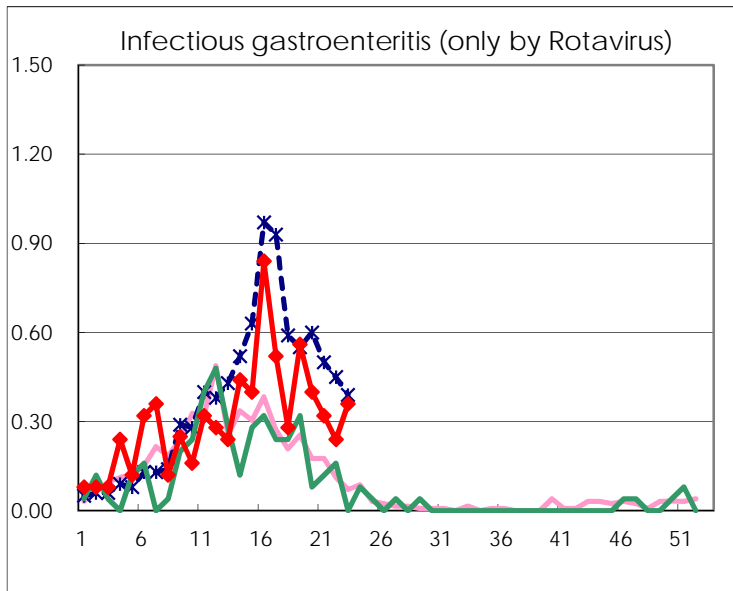
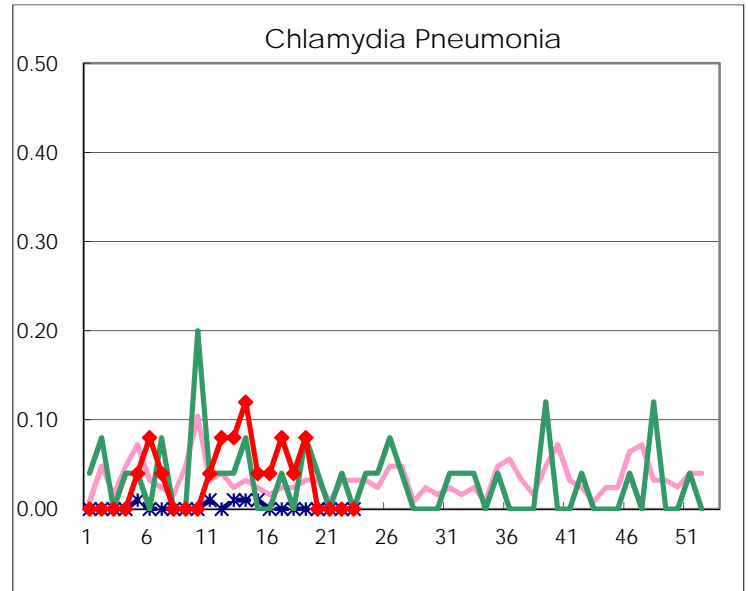
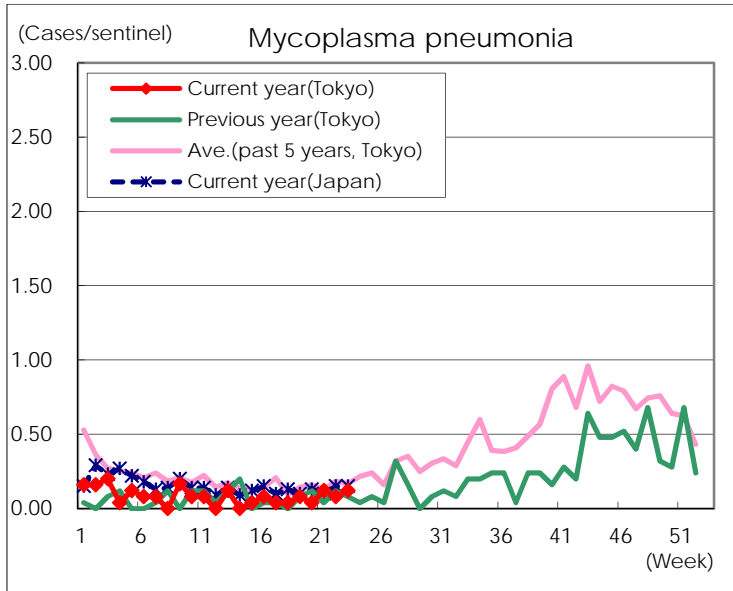
(Blank means 0.)

Disease Trend Graph (weekly reported cases per sentinel in comparison)









Number of sentinel facilities for weekly reporting		
Types of sentinels	Number of sentinels	Sentinels having reported
Pediatric	264	261
Influenza	419	415
Ophthalmic	39	38
Specially-designated	25	25