

**20 June 2019 / Number 24**

## Surveillance System in Tokyo, Japan

The infectious diseases which all physicians must report

All physicians must report to health centers the incidence of the diseases which are shown at page one. Health centers electronically report the individual cases to Tokyo Metropolitan Infectious Disease Surveillance Center.

The infectious diseases required to be reported by the sentinels

The numbers of patients who visit the sentinel clinics or hospitals during a week are reported to health centers in Tokyo. And they electronically report the numbers to Tokyo Metropolitan Infectious Disease Surveillance Center. We have about 500 sentinel clinics and hospitals in Tokyo.

Tokyo Metropolitan Institute of Public Health

TEL:81-3-3363-3213 FAX:81-3-5332-7365

e-mail:[www@tokyo-eiken.go.jp](mailto:www@tokyo-eiken.go.jp)

URL:[idsc.tokyo-eiken.go.jp/](http://idsc.tokyo-eiken.go.jp/)

---

Number of patients with the diseases which all physicians must report

Category	Diseases	Tokyo					Japan	
		21st	22nd	23rd	24th	Cum 2019	24th	Cum 2019
I	Ebola hemorrhagic fever							
	Crimean-Congo hemorrhagic fever							
	Smallpox							
	South American hemorrhagic fever							
	Plague							
	Marburg disease							
	Lassa fever							
II	Acute poliomyelitis							
	Tuberculosis	66	70	57	56	1,375	357	9,470
	Diphtheria							
	Severe Acute Respiratory Syndrome(SARS)							
	Middle East Respiratory Syndrome (MERS)							
	Avian influenza H5N1							
	Avian influenza H7N9							
III	Cholera	1				2		3
	Shigellosis	1	1			10	1	42
	Enterohemorrhagic Escherichia coli infection	8	2	7	12	78	90	733
	Typhoid fever	1				2		16
	Paratyphoid fever					3		10
IV	Hepatitis E	5	3	2	3	63	7	232
	West Nile fever							
	Hepatitis A	6	4	2	4	66	10	222
	Echinococcosis							5
	Yellow fever							
	Psittacosis					3		11
	Omsk hemorrhagic fever							
	Relapsing fever							
	Kyasanur forest disease							
	Q fever							
	Rabies							
	Coccidioidomycosis							1
	Monkeypox							
	Zika virus infection							
	Severe Fever with Thrombocytopenia Syndrome					1	2	34
	Hemorrhagic fever with renal syndrome							
	Western equine encephalitis							
	Tick-borne encephalitis							
	Anthrax							
	Chikungunya fever	1				1	1	4
	Scrub typhus(Tsutsugamushi disease)						6	74
	Dengue fever	3	1	1		45	2	136
	Eastern equine encephalitis							
	Avian influenza (excluding H5N1 and H7N9)							
	Nipah virus infection							
	Japanese spotted fever						7	55
	Japanese encephalitis							
	Hantavirus pulmonary syndrome							
	Herpes B virus infection							
	Glanders							
	Brucellosis				1	1		2
	Venezuelan equine encephalitis							
	Hendra virus infection							
Epidemic typhus								
Botulism							1	
Malaria	1				5		20	
Tularemia								
Lyme disease							2	
Lyssavirus infection(excluding rabies)								
Rift valley fever								
Melioidosis								
Legionellosis	1	4	5	1	66	35	681	
Leptospirosis					1		4	
Rocky mountain spotted fever								

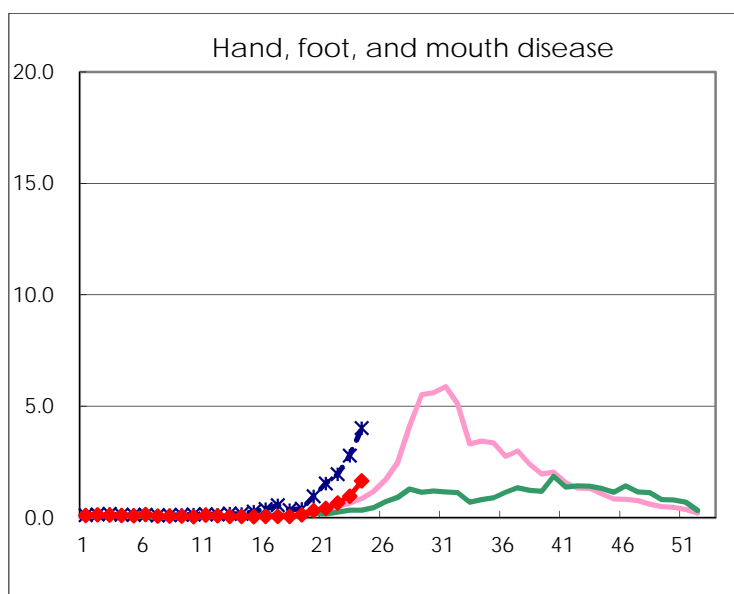
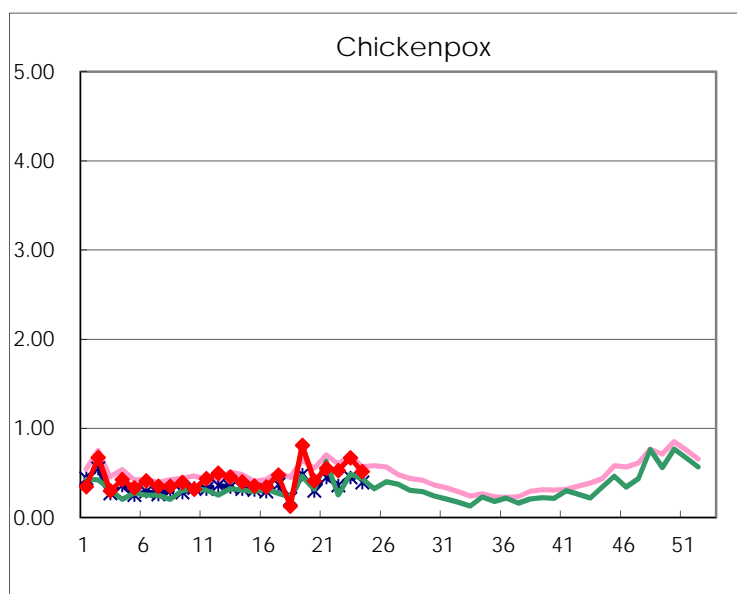
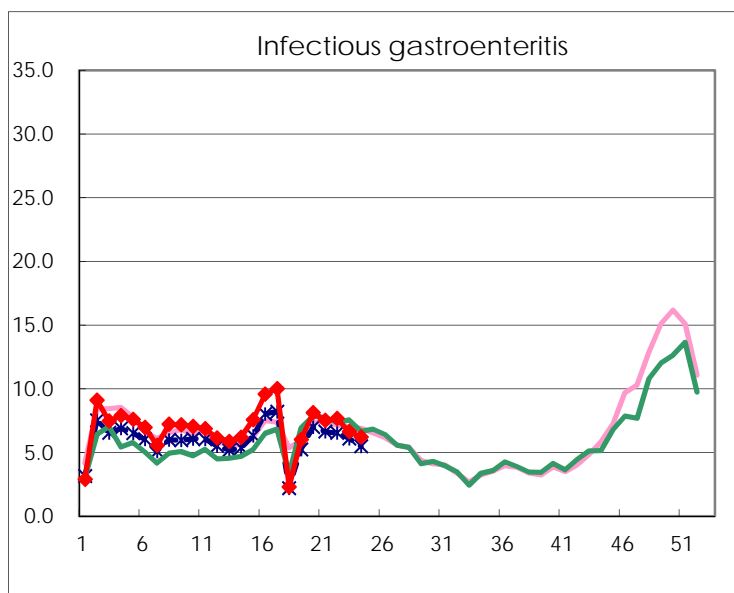
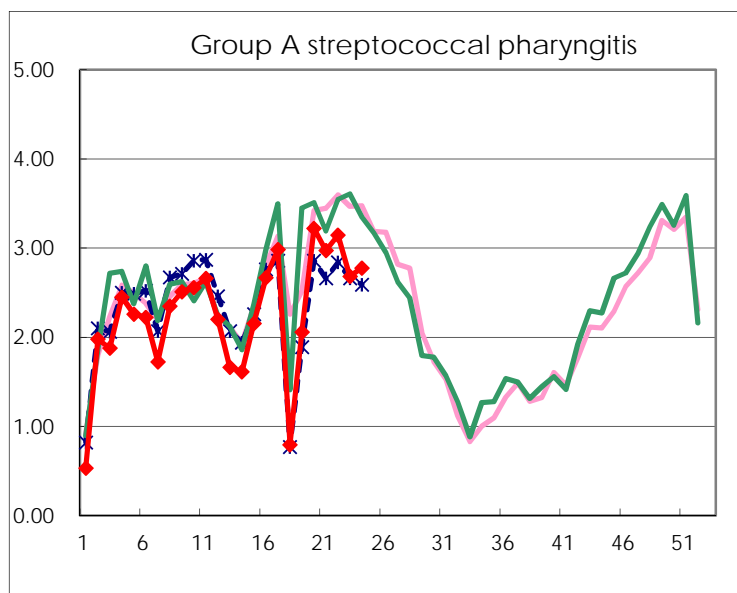
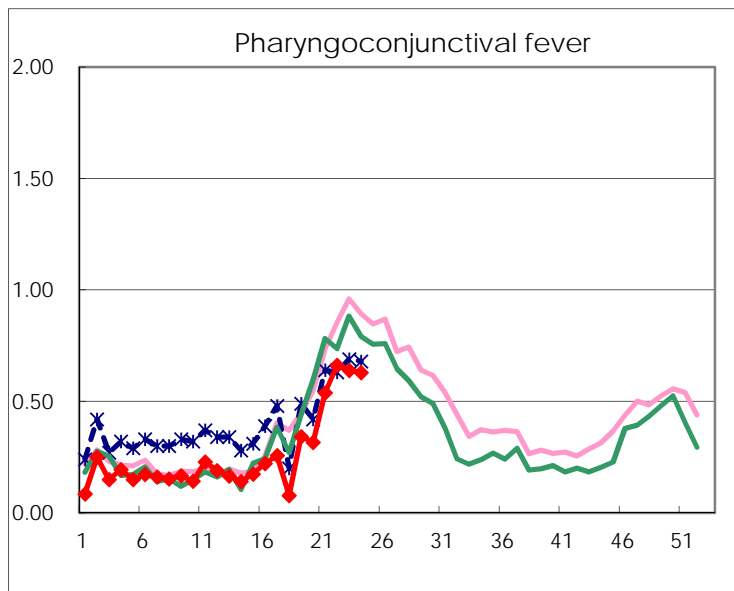
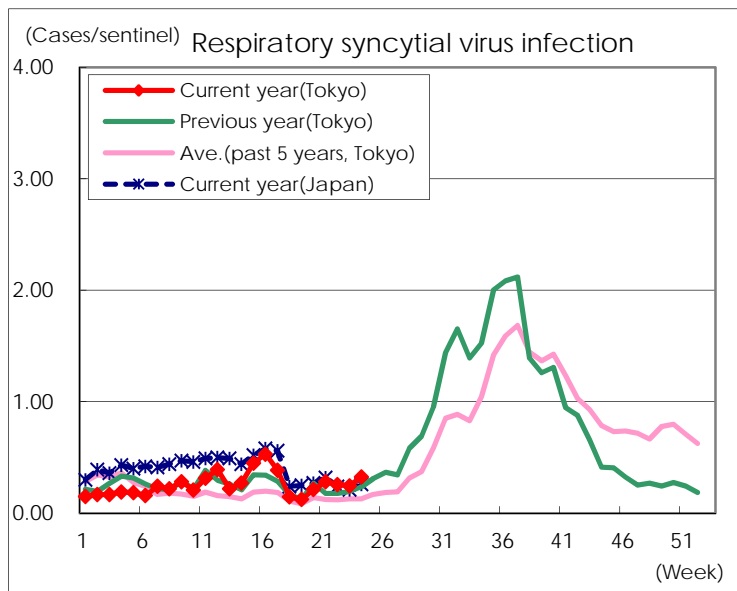
Category	Diseases	Tokyo					Japan	
		21st	22nd	23rd	24th	Cum 2019	24th	Cum 2019
V	Amebiasis	1	3	2	3	81	9	397
	Viral hepatitis(excluding hepatitis A and E)	1	1	5	2	37	4	148
	CRE infection	5	4		2	86	28	872
	Acute Flaccid Paralysis (excluding Acute poliomyelitis)		1			3		31
	Acute encephalitis(excluding JE and WNE)	1	2	2		46	13	464
	Cryptosporidiosis					2	1	8
	Creutzfeldt-Jakob disease		1	2		12	3	81
	Severe invasive streptococcal infections(TSLs)	2	2	3	4	54	14	430
	Acquired immunodeficiency syndrome (AIDS)	7	10	10	9	183	21	526
	Giardiasis					3	2	21
	Invasive <i>Haemophilus influenzae</i> disease	1	4	1	4	47	5	289
	Invasive meningococcal disease					1		22
	Invasive pneumococcal disease	8	11	7	6	219	35	1,887
	Varicella (limited to hospitalized case)	2		1	1	30	5	214
	Congenital rubella syndrome					1	1	3
	Syphilis	36	45	42	44	807	92	2,959
	Disseminated cryptococcosis	1				7	1	65
	Tetanus		1			3	3	43
	Vancomycin-resistant <i>S. aureus</i> infection							
	Vancomycin-resistant <i>Enterococcus</i> infection			1		4	2	36
Pertussis	19	14	22	20	740	253	7,260	
Rubella	23	13	28	27	633	59	1,793	
Measles	3	1		1	100	12	631	
MDRA infection					2		16	

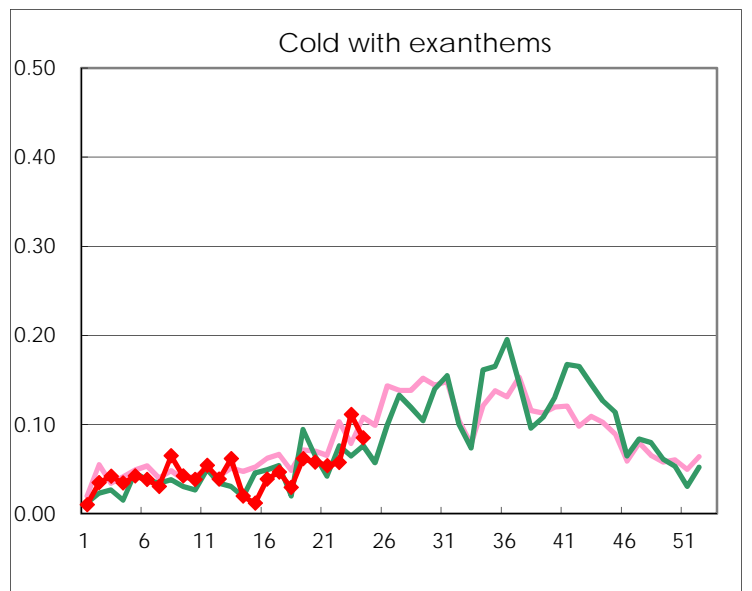
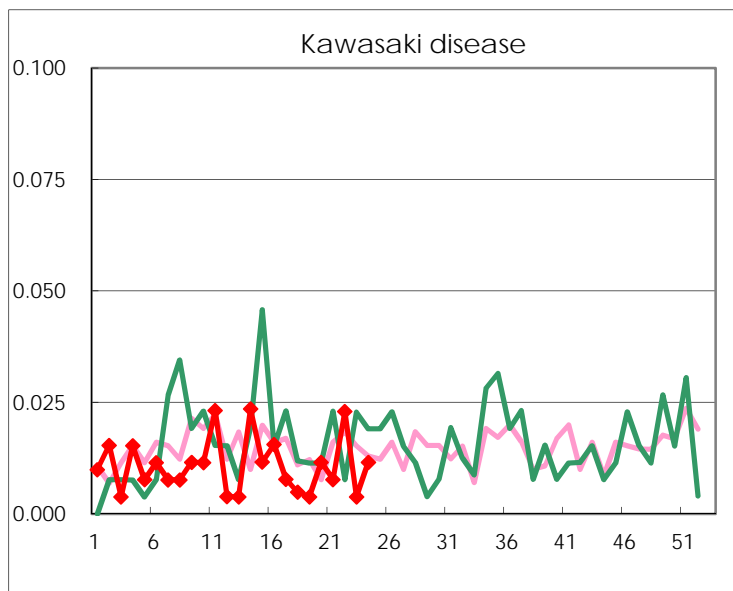
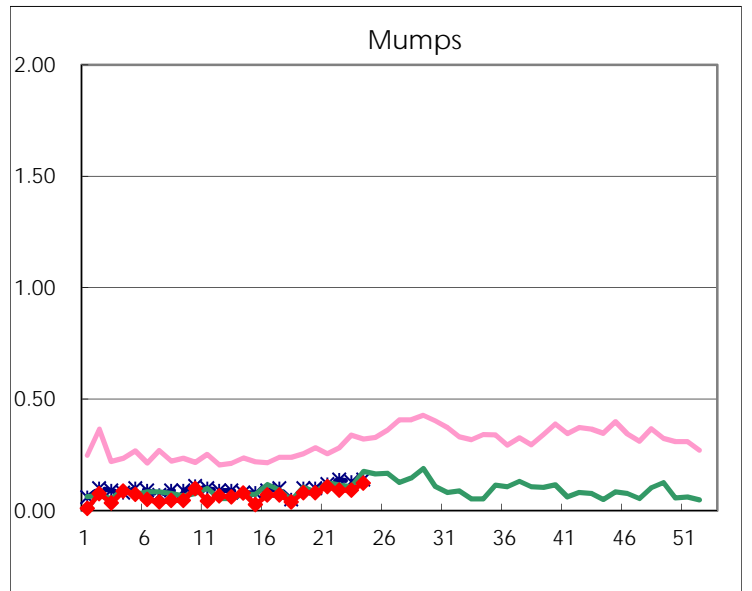
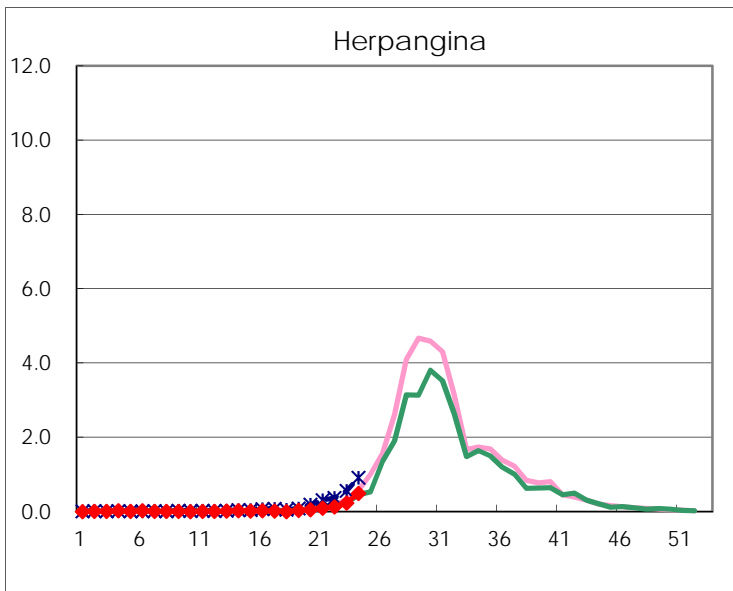
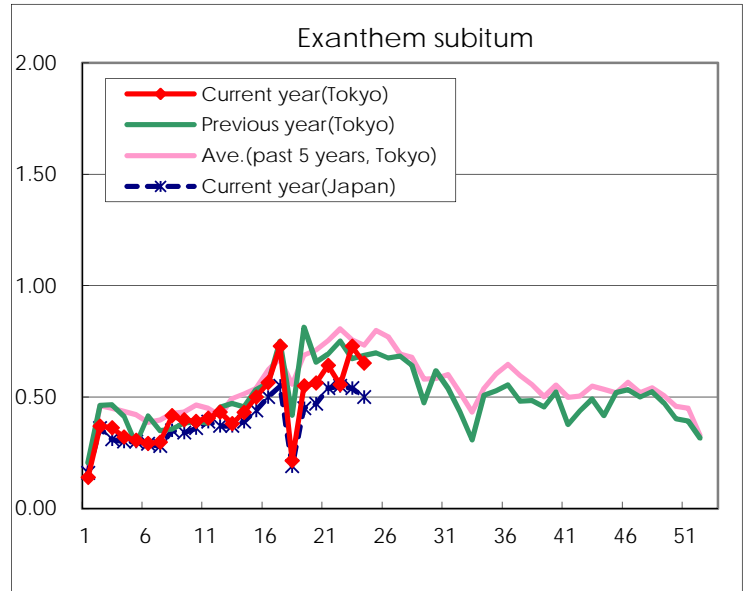
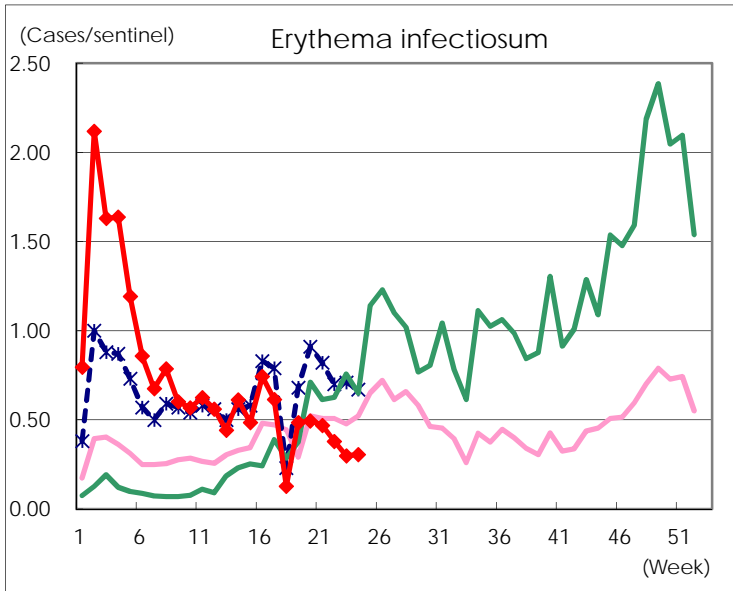
Number of patients with the diseases to be reported  
by the designated clinics and hospitals

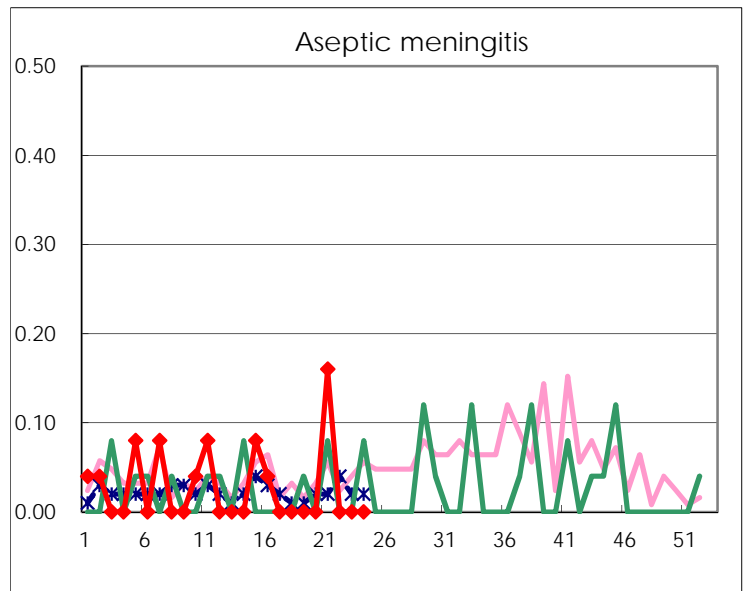
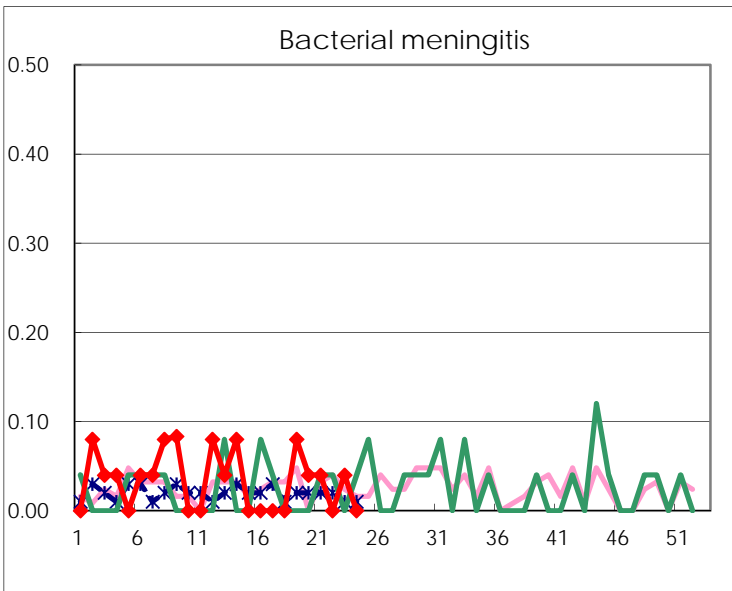
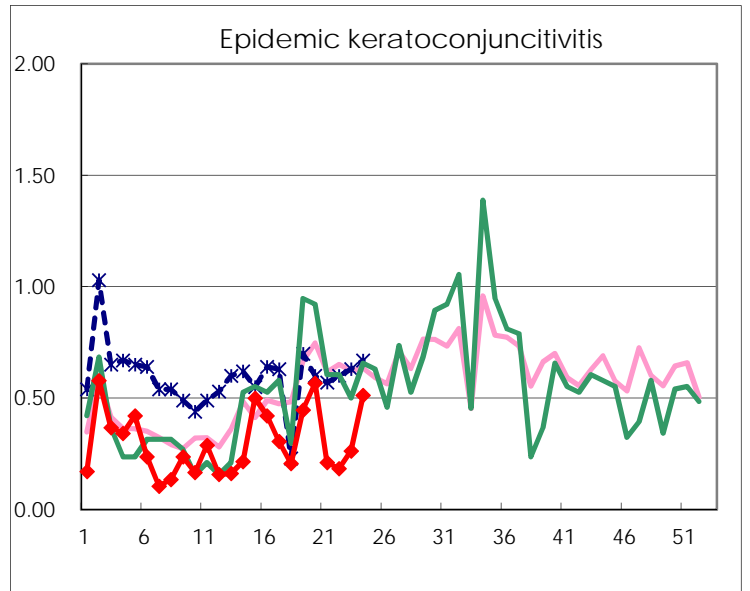
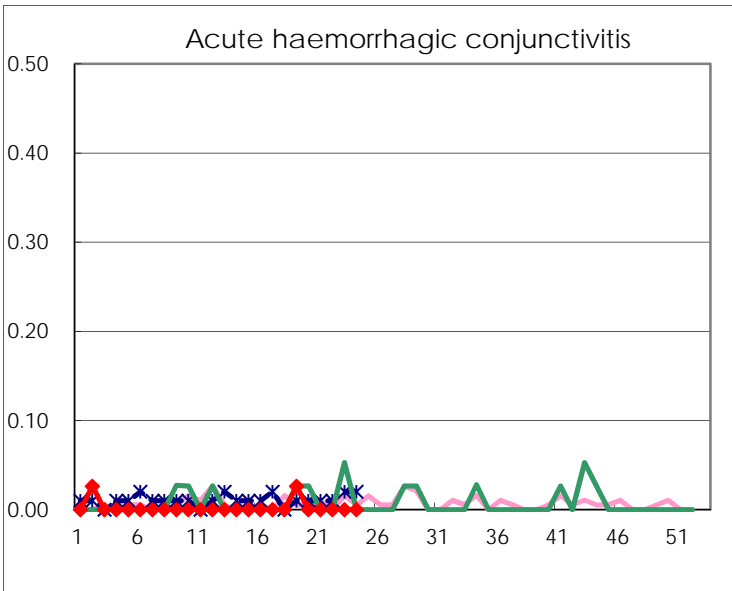
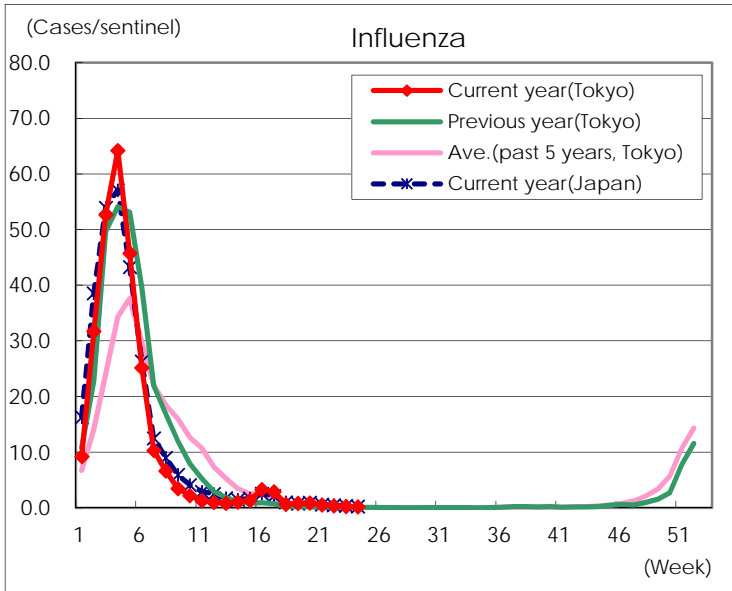
Diseases	Tokyo				
	21st	22nd	23rd	24th	/sentinel
Respiratory syncytial virus infection	73	67	64	84	0.32
Pharyngoconjunctival fever	140	173	167	163	0.63
Group A streptococcal pharyngitis	773	821	700	719	2.78
Infectious gastroenteritis	1,953	2,000	1,732	1,607	6.20
Chickenpox	143	137	174	133	0.51
Hand, foot, and mouth disease	109	173	252	428	1.65
Erythema infectiosum	122	99	78	79	0.31
Exanthem subitum	167	145	190	169	0.65
Herpangina	24	33	61	127	0.49
Mumps	28	24	24	32	0.12
Kawasaki disease	2	6	1	3	0.01
Cold with exanthems	14	15	29	22	0.08
Influenza	218	143	110	87	0.21
Acute hemorrhagic conjunctivitis					
Epidemic keratoconjunctivitis	8	7	10	20	0.51
Bacterial meningitis	1		1		
Aseptic meningitis	4				
<i>Mycoplasma pneumoniae</i>	3	2	3	3	0.12
Chlamydial pneumonia (excluding psittacosis)					
Infectious gastroenteritis (only by Rotavirus)	8	6	9	3	0.12
Influenza-Associated Hospitalizations	1	2	3	1	0.04

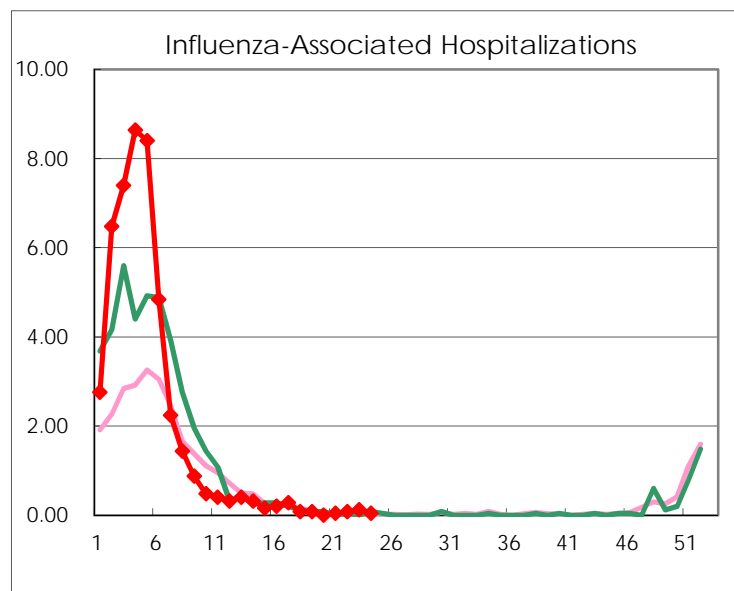
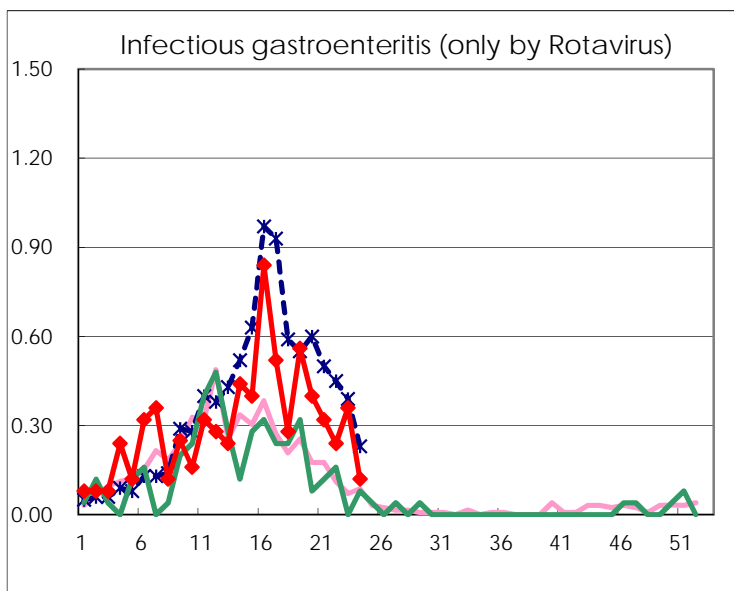
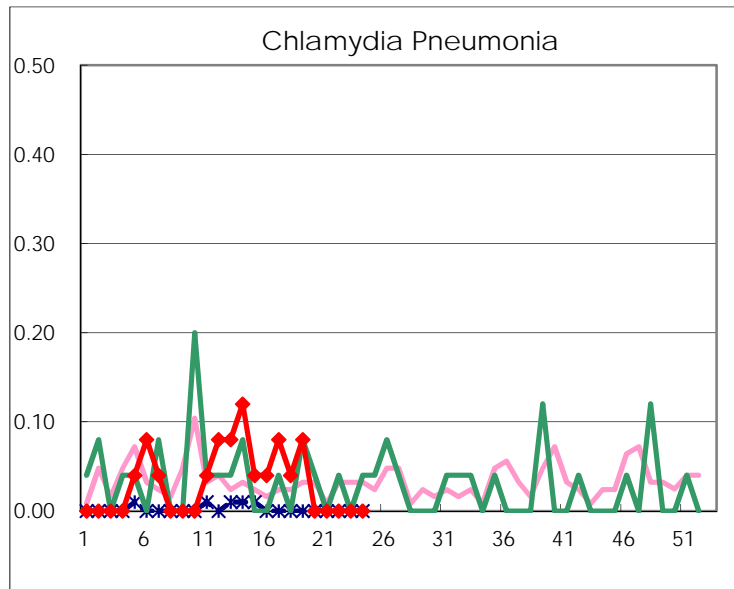
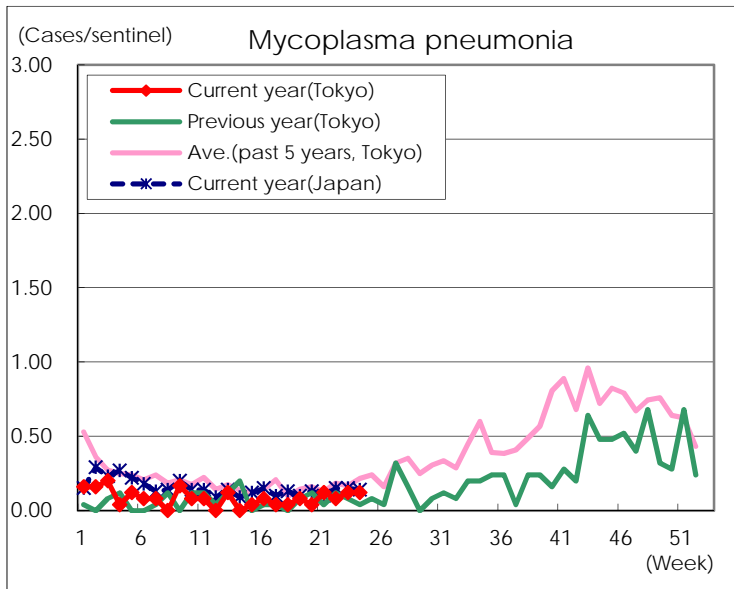
( Blank means 0. )

# Disease Trend Graph (weekly reported cases per sentinel in comparison)









Number of sentinel facilities for weekly reporting		
Types of sentinels	Number of sentinels	Sentinels having reported
Pediatric	264	259
Influenza	419	412
Ophthalmic	39	39
Specially-designated	25	25