

27 June 2019 / Number 25

Surveillance System in Tokyo, Japan

The infectious diseases which all physicians must report

All physicians must report to health centers the incidence of the diseases which are shown at page one. Health centers electronically report the individual cases to Tokyo Metropolitan Infectious Disease Surveillance Center.

The infectious diseases required to be reported by the sentinels

The numbers of patients who visit the sentinel clinics or hospitals during a week are reported to health centers in Tokyo. And they electronically report the numbers to Tokyo Metropolitan Infectious Disease Surveillance Center. We have about 500 sentinel clinics and hospitals in Tokyo.

Tokyo Metropolitan Institute of Public Health

TEL:81-3-3363-3213 FAX:81-3-5332-7365

e-mail:www@tokyo-eiken.go.jp

URL:idsc.tokyo-eiken.go.jp/

Number of patients with the diseases which all physicians must report

Category	Diseases	Tokyo					Japan	
		22nd	23rd	24th	25th	Cum 2019	25th	Cum 2019
I	Ebola hemorrhagic fever							
	Crimean-Congo hemorrhagic fever							
	Smallpox							
	South American hemorrhagic fever							
	Plague							
	Marburg disease							
	Lassa fever							
II	Acute poliomyelitis							
	Tuberculosis	70	59	59	69	1,449	352	9,942
	Diphtheria							
	Severe Acute Respiratory Syndrome(SARS)							
	Middle East Respiratory Syndrome (MERS)							
	Avian influenza H5N1							
III	Avian influenza H7N9							
	Cholera					2		3
	Shigellosis	1				10	2	44
	Enterohemorrhagic Escherichia coli infection	2	7	12	7	85	115	856
	Typhoid fever					2	1	17
IV	Paratyphoid fever					3		10
	Hepatitis E	3	2	3	3	66	13	245
	West Nile fever							
	Hepatitis A	4	2	5	5	72	10	235
	Echinococcosis							5
	Yellow fever							
	Psittacosis					3		11
	Omsk hemorrhagic fever							
	Relapsing fever							
	Kyasanur forest disease							
	Q fever							
	Rabies							
	Coccidioidomycosis							1
	Monkeypox							
	Zika virus infection							
	Severe Fever with Thrombocytopenia Syndrome					1	2	37
	Hemorrhagic fever with renal syndrome							
	Western equine encephalitis							
	Tick-borne encephalitis							
	Anthrax							
	Chikungunya fever					1		4
	Scrub typhus(Tsutsugamushi disease)						3	77
	Dengue fever	1	1			45	5	141
	Eastern equine encephalitis							
	Avian influenza (excluding H5N1 and H7N9)							
	Nipah virus infection							
	Japanese spotted fever						6	62
	Japanese encephalitis							
	Hantavirus pulmonary syndrome							
	Herpes B virus infection							
	Glanders							
	Brucellosis			1		1		2
	Venezuelan equine encephalitis							
Hendra virus infection								
Epidemic typhus								
Botulism							1	
Malaria				1	6	1	20	
Tularemia								
Lyme disease							2	
Lyssavirus infection(excluding rabies)								
Rift valley fever								
Melioidosis								
Legionellosis	4	5	1	8	74	76	763	
Leptospirosis					1		4	
Rocky mountain spotted fever								

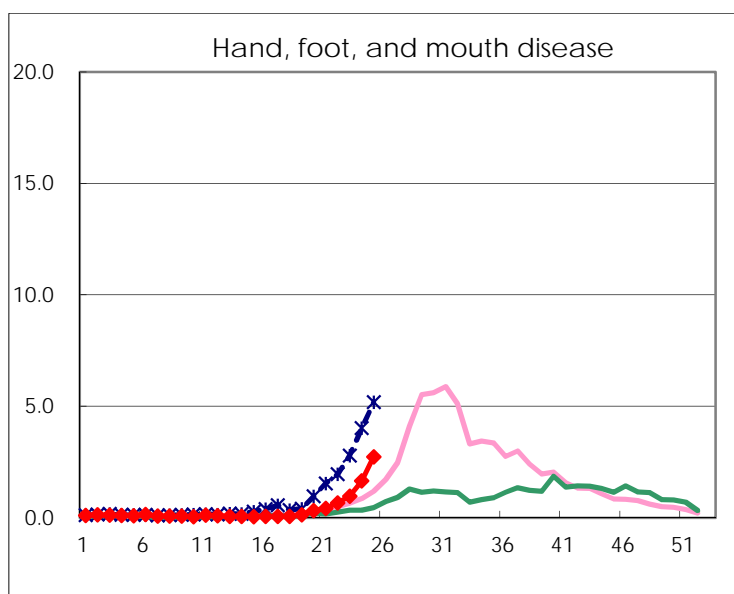
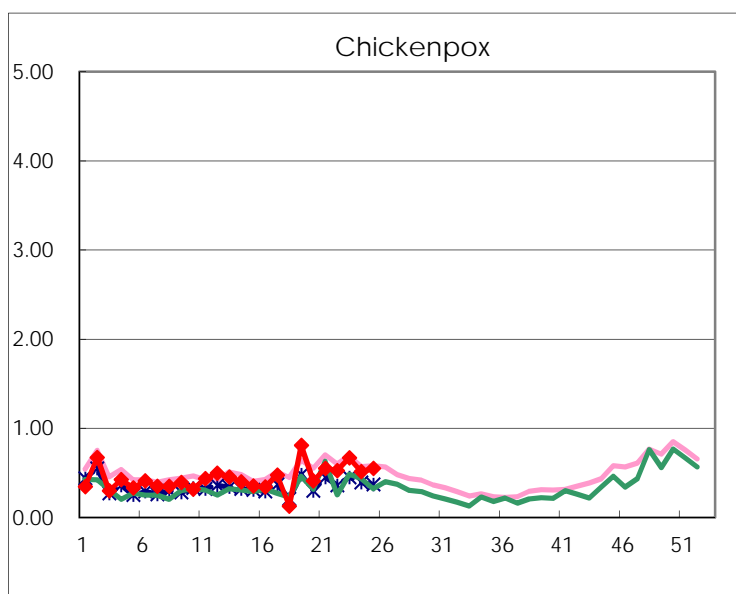
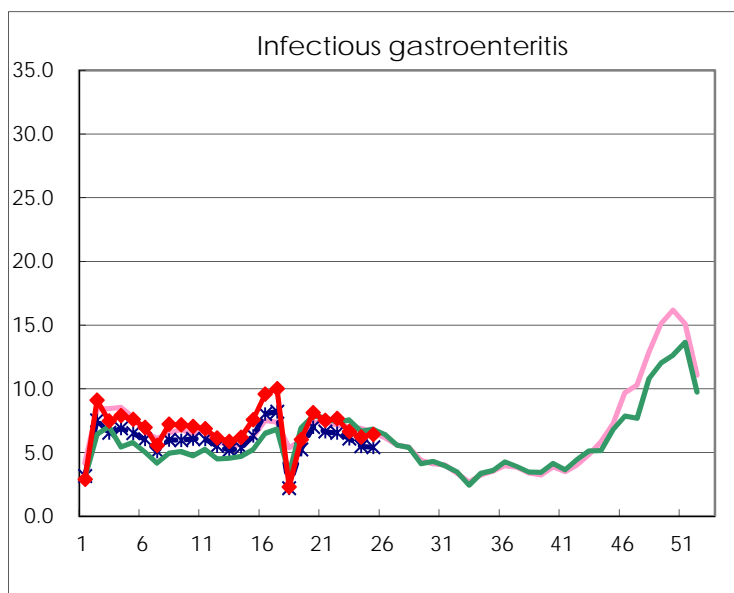
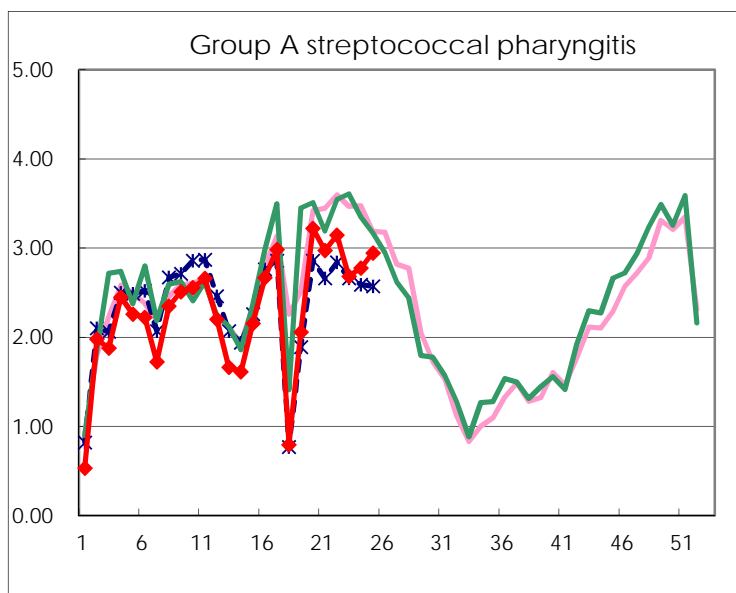
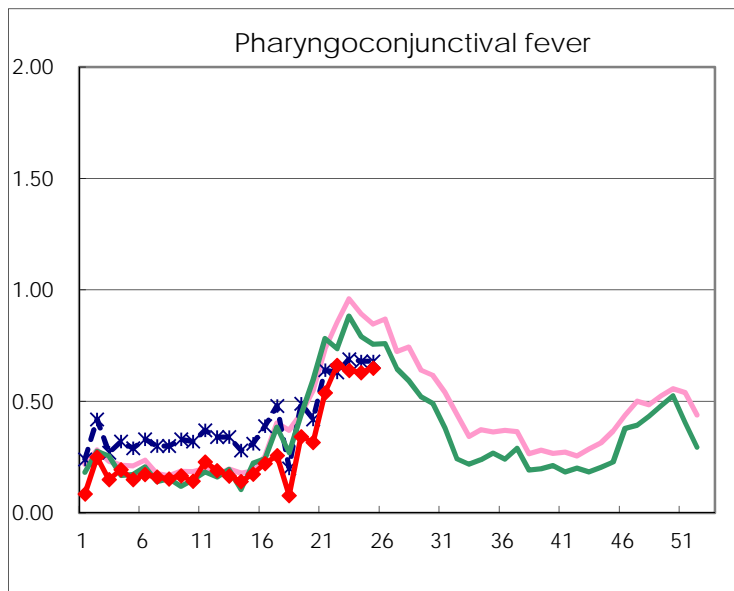
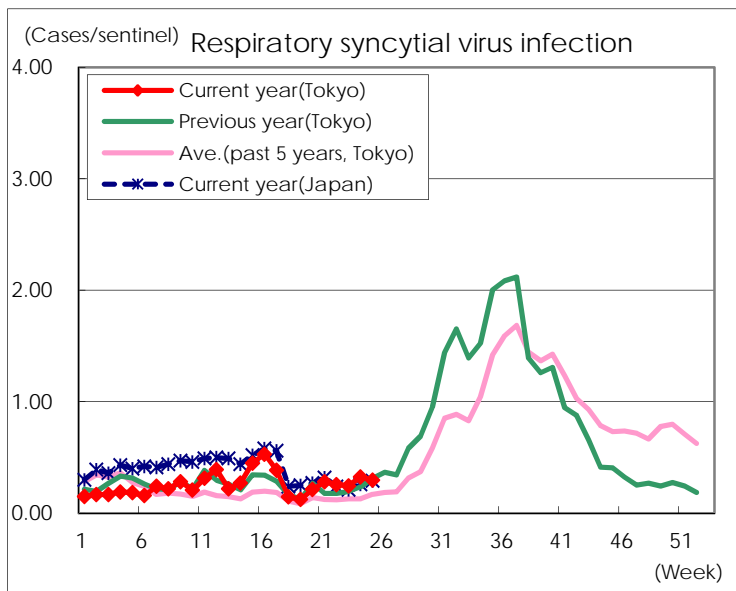
Category	Diseases	Tokyo					Japan	
		22nd	23rd	24th	25th	Cum 2019	25th	Cum 2019
V	Amebiasis	3	2	3	2	83	11	412
	Viral hepatitis(excluding hepatitis A and E)	1	5	2	1	38		150
	CRE infection	4		2	5	91	27	912
	Acute Flaccid Paralysis (excluding Acute poliomyelitis)	1				3	1	35
	Acute encephalitis(excluding JE and WNE)	2	2		1	47	8	480
	Cryptosporidiosis					2		8
	Creutzfeldt-Jakob disease	1	2			12	3	86
	Severe invasive streptococcal infections(TSLs)	2	3	4	3	57	11	447
	Acquired immunodeficiency syndrome (AIDS)	10	10	9	7	190	13	554
	Giardiasis					3		22
	Invasive <i>Haemophilus influenzae</i> disease	4	1	4		47	6	300
	Invasive meningococcal disease					1		22
	Invasive pneumococcal disease	11	8	6	7	227	44	1,951
	Varicella (limited to hospitalized case)		1	1	3	33	11	232
	Congenital rubella syndrome					1		3
	Syphilis	45	43	44	30	838	82	3,105
	Disseminated cryptococcosis					7		68
	Tetanus	1			1	4	2	50
	Vancomycin-resistant <i>S. aureus</i> infection							
	Vancomycin-resistant <i>Enterococcus</i> infection		1			4	1	37
	Pertussis	14	22	21	11	752	282	7,679
Rubella	13	29	27	27	661	50	1,848	
Measles	1		1		100	8	638	
MDRA infection					2		16	

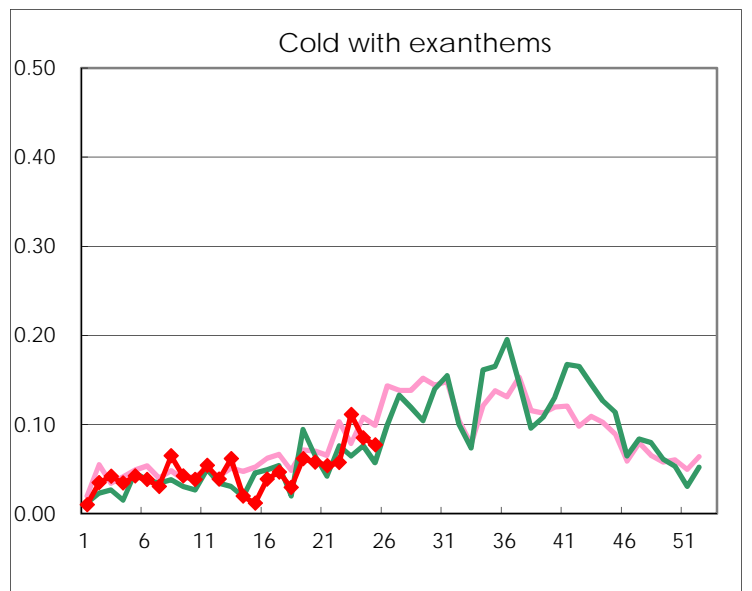
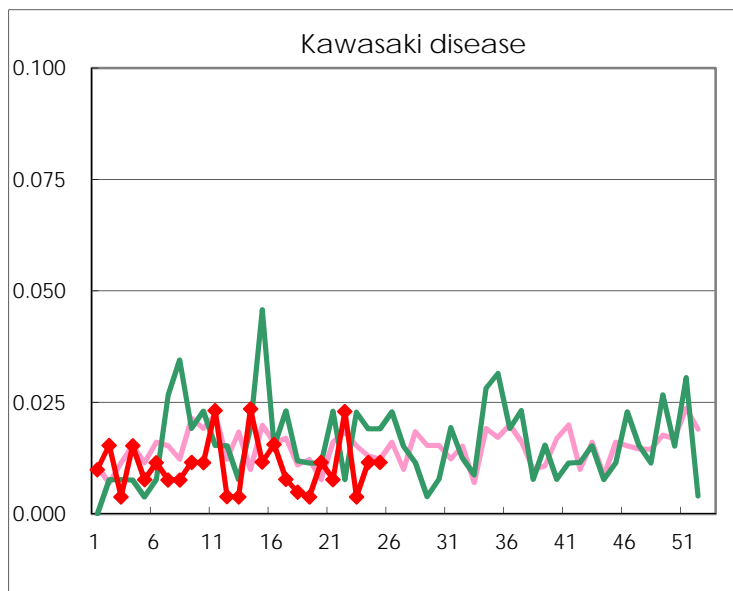
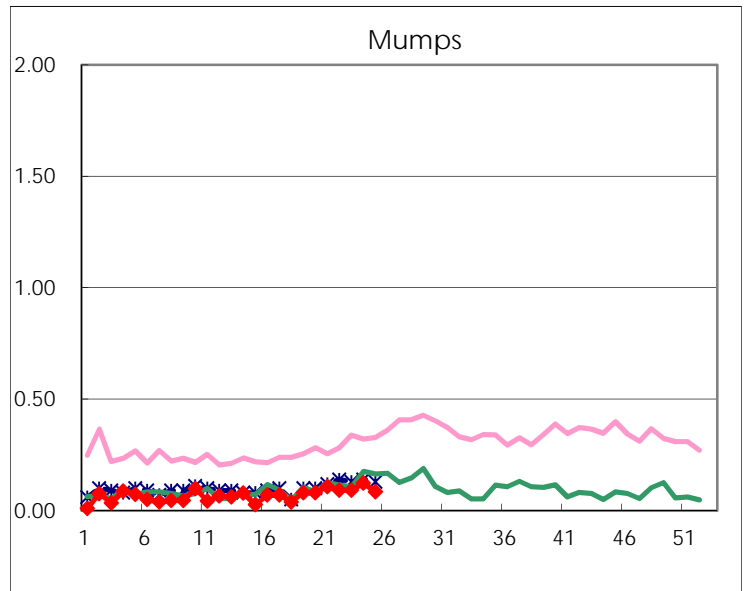
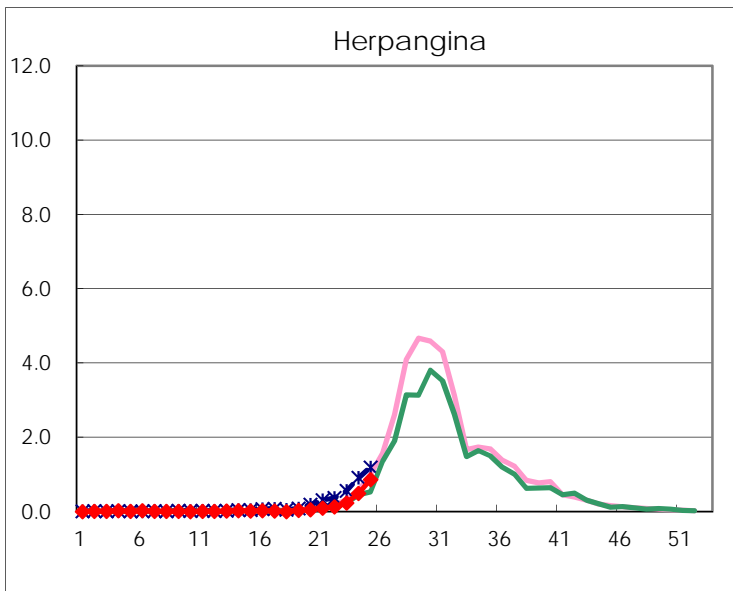
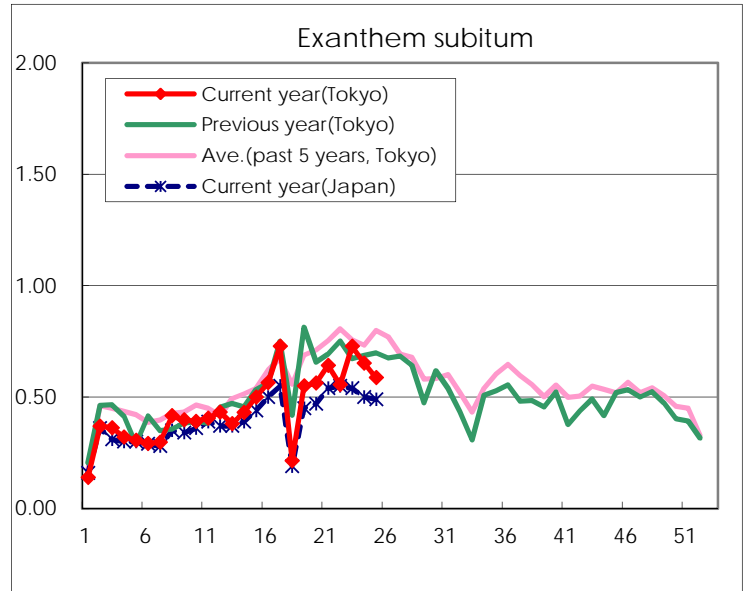
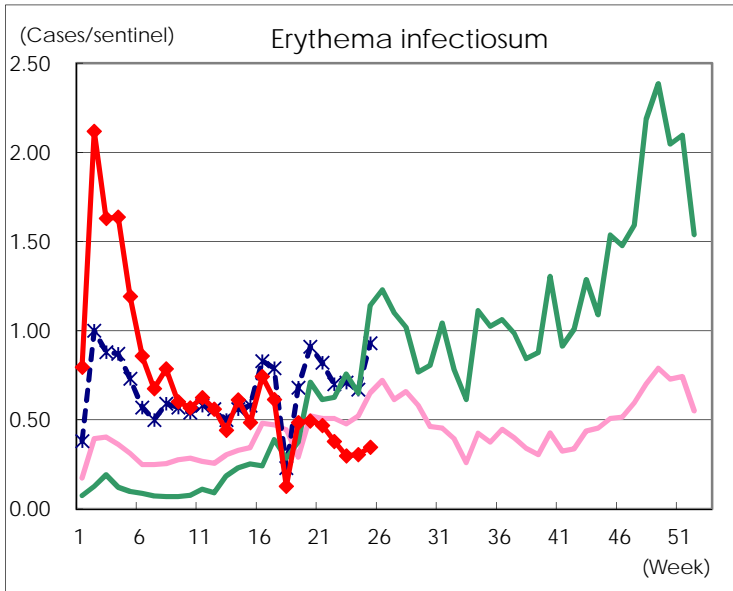
Number of patients with the diseases to be reported
by the designated clinics and hospitals

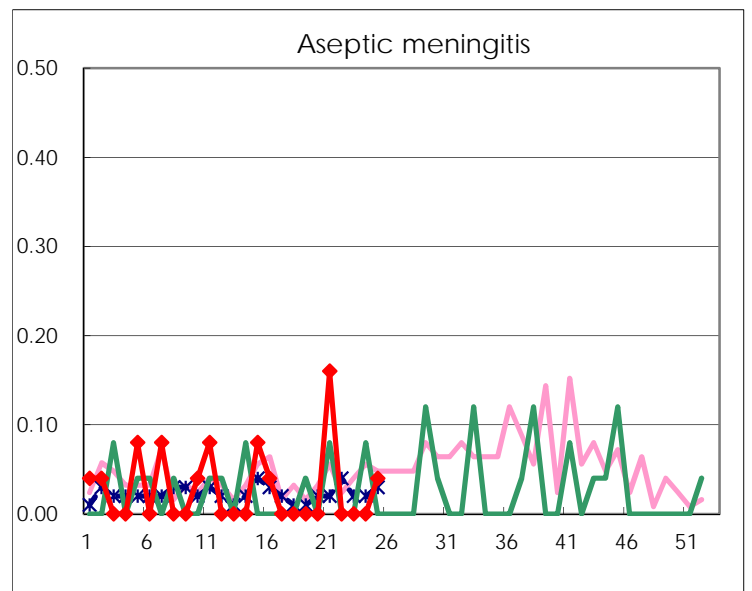
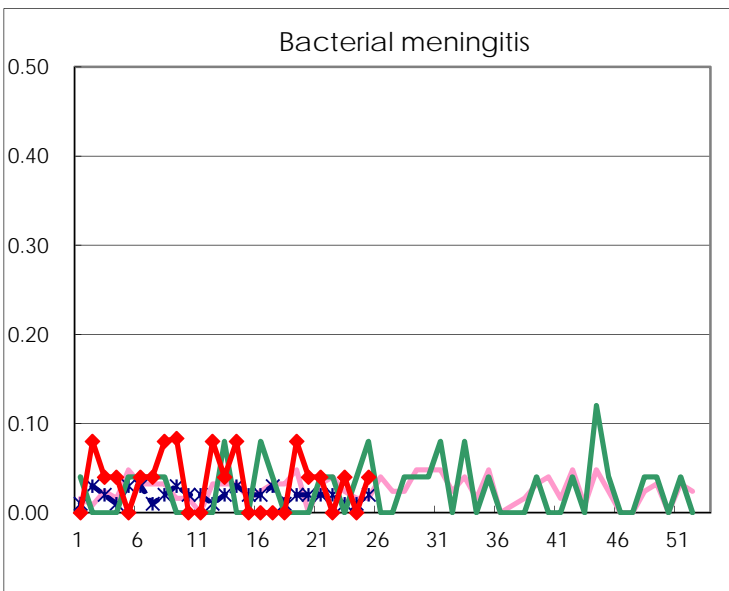
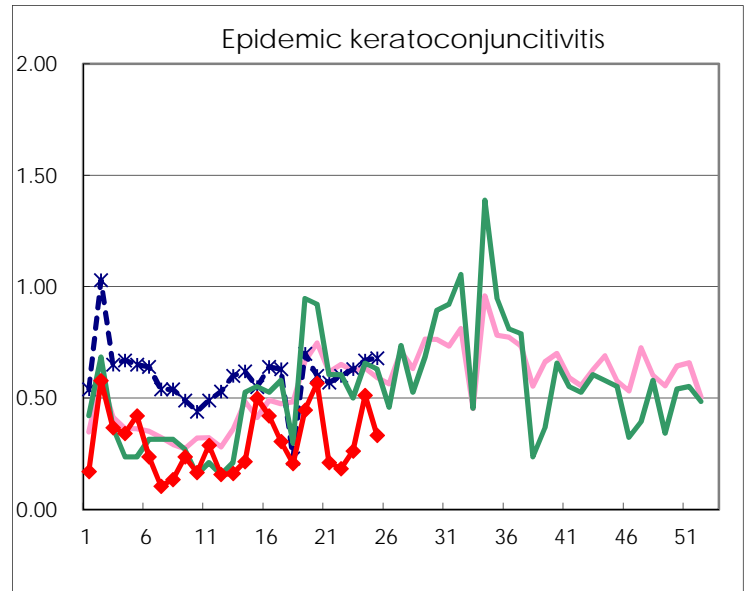
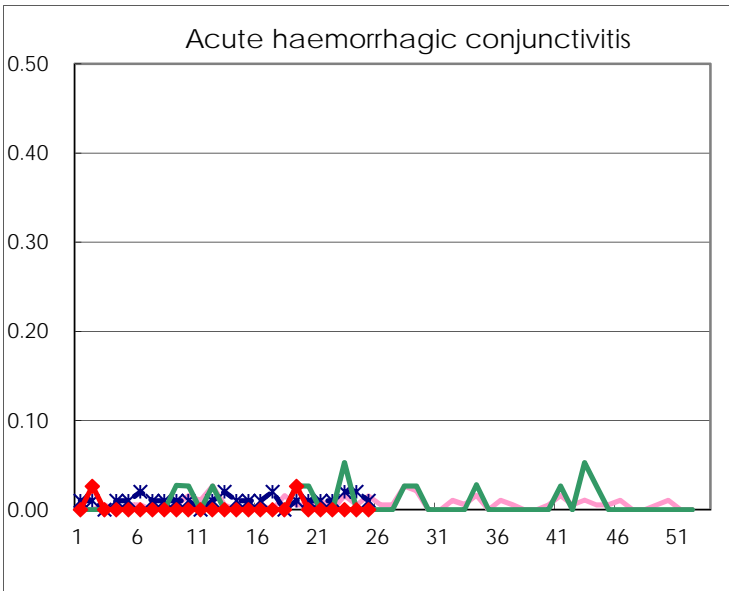
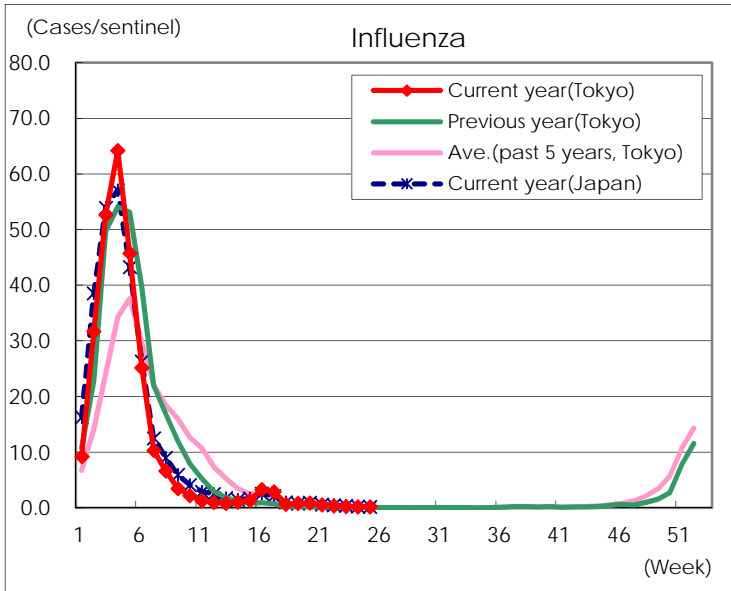
Diseases	Tokyo				
	22nd	23rd	24th	25th	/sentinel
Respiratory syncytial virus infection	67	64	84	77	0.30
Pharyngoconjunctival fever	173	167	163	168	0.65
Group A streptococcal pharyngitis	821	700	719	763	2.95
Infectious gastroenteritis	2,000	1,732	1,607	1,661	6.41
Chickenpox	137	174	133	142	0.55
Hand, foot, and mouth disease	173	252	428	708	2.73
Erythema infectiosum	99	78	79	90	0.35
Exanthem subitum	145	190	169	152	0.59
Herpangina	33	61	127	224	0.86
Mumps	24	24	32	22	0.08
Kawasaki disease	6	1	3	3	0.01
Cold with exanthems	15	29	22	20	0.08
Influenza	143	110	87	67	0.16
Acute hemorrhagic conjunctivitis					
Epidemic keratoconjunctivitis	7	10	20	12	0.33
Bacterial meningitis		1		1	0.04
Aseptic meningitis				1	0.04
<i>Mycoplasma pneumoniae</i>	2	3	3	3	0.12
Chlamydial pneumonia (excluding psittacosis)					
Infectious gastroenteritis (only by Rotavirus)	6	9	3	1	0.04
Influenza-Associated Hospitalizations	2	3	1		

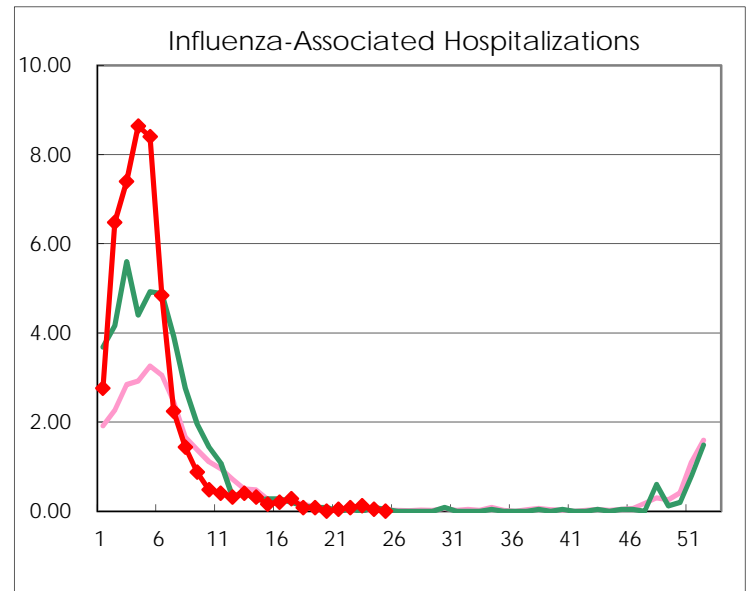
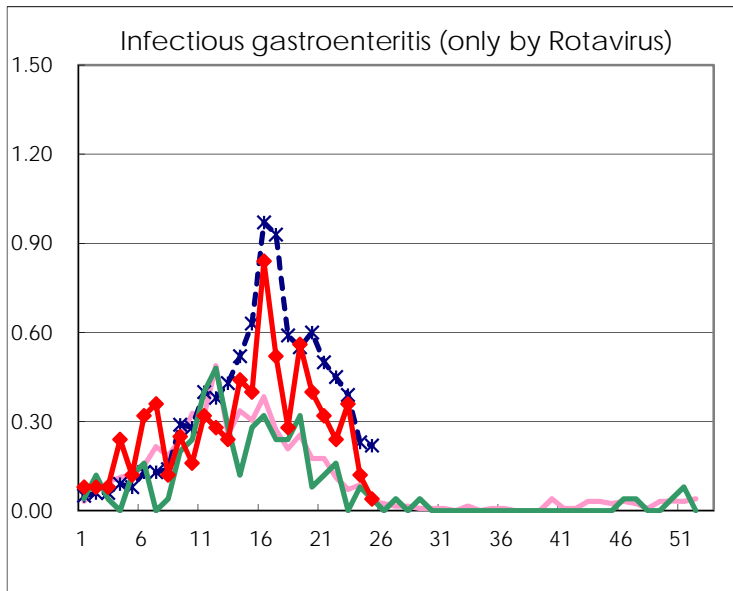
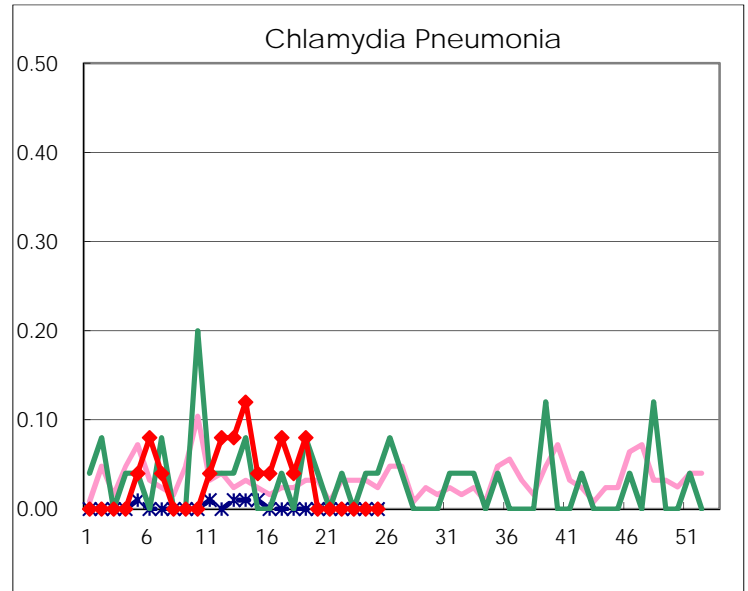
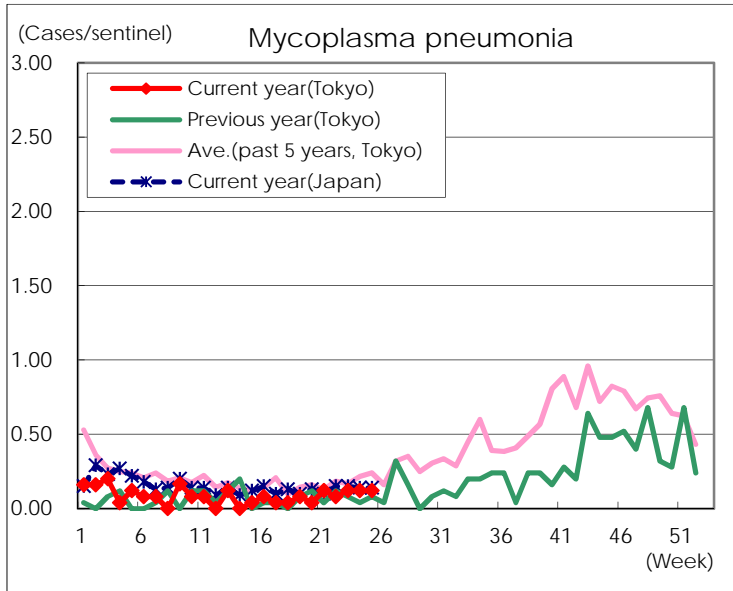
(Blank means 0.)

Disease Trend Graph (weekly reported cases per sentinel in comparison)









Number of sentinel facilities for weekly reporting		
Types of sentinels	Number of sentinels	Sentinels having reported
Pediatric	264	259
Influenza	419	413
Ophthalmic	39	36
Specially-designated	25	25