

4 July 2019 / Number 26

Surveillance System in Tokyo, Japan

The infectious diseases which all physicians must report

All physicians must report to health centers the incidence of the diseases which are shown at page one. Health centers electronically report the individual cases to Tokyo Metropolitan Infectious Disease Surveillance Center.

The infectious diseases required to be reported by the sentinels

The numbers of patients who visit the sentinel clinics or hospitals during a week are reported to health centers in Tokyo. And they electronically report the numbers to Tokyo Metropolitan Infectious Disease Surveillance Center. We have about 500 sentinel clinics and hospitals in Tokyo.

Tokyo Metropolitan Institute of Public Health

TEL:81-3-3363-3213 FAX:81-3-5332-7365

e-mail:www@tokyo-eiken.go.jp

URL:idsc.tokyo-eiken.go.jp/

Number of patients with the diseases which all physicians must report

Category	Diseases	Tokyo					Japan	
		23rd	24th	25th	26th	Cum 2019	26th	Cum 2019
I	Ebola hemorrhagic fever							
	Crimean-Congo hemorrhagic fever							
	Smallpox							
	South American hemorrhagic fever							
	Plague							
	Marburg disease							
	Lassa fever							
II	Acute poliomyelitis							
	Tuberculosis	60	66	72	57	1,517	372	10,419
	Diphtheria							
	Severe Acute Respiratory Syndrome(SARS)							
	Middle East Respiratory Syndrome (MERS)							
	Avian influenza H5N1							
	Avian influenza H7N9							
III	Cholera					2		3
	Shigellosis				1	11	5	49
	Enterohemorrhagic Escherichia coli infection	7	12	7	15	100	126	993
	Typhoid fever					2	1	18
	Paratyphoid fever					3		10
IV	Hepatitis E	2	3	3		66	10	257
	West Nile fever							
	Hepatitis A	2	5	5	2	74	5	242
	Echinococcosis						2	7
	Yellow fever							
	Psittacosis					3		11
	Omsk hemorrhagic fever							
	Relapsing fever							
	Kyasanur forest disease							
	Q fever							
	Rabies							
	Coccidioidomycosis							1
	Monkeypox							
	Zika virus infection							
	Severe Fever with Thrombocytopenia Syndrome					1	7	43
	Hemorrhagic fever with renal syndrome							
	Western equine encephalitis							
	Tick-borne encephalitis							
	Anthrax							
	Chikungunya fever				1	2	3	7
	Scrub typhus(Tsutsugamushi disease)						1	78
	Dengue fever	1			1	46	7	149
	Eastern equine encephalitis							
	Avian influenza (excluding H5N1 and H7N9)							
	Nipah virus infection							
	Japanese spotted fever						2	65
	Japanese encephalitis							
	Hantavirus pulmonary syndrome							
	Herpes B virus infection							
	Glanders							
	Brucellosis		1			1		2
	Venezuelan equine encephalitis							
	Hendra virus infection							
	Epidemic typhus							
Botulism							1	
Malaria			1		6	1	21	
Tularemia								
Lyme disease							2	
Lyssavirus infection(excluding rabies)								
Rift valley fever								
Melioidosis								
Legionellosis	5	1	8	6	80	72	845	
Leptospirosis					1		4	
Rocky mountain spotted fever								

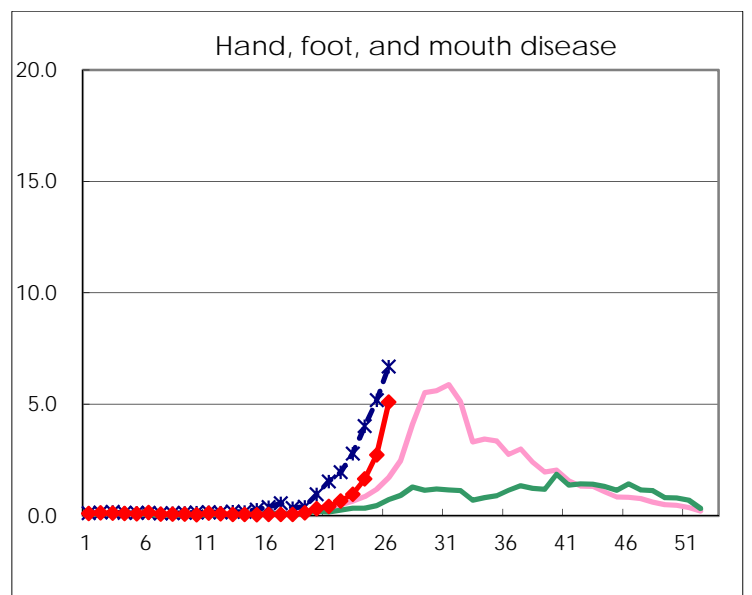
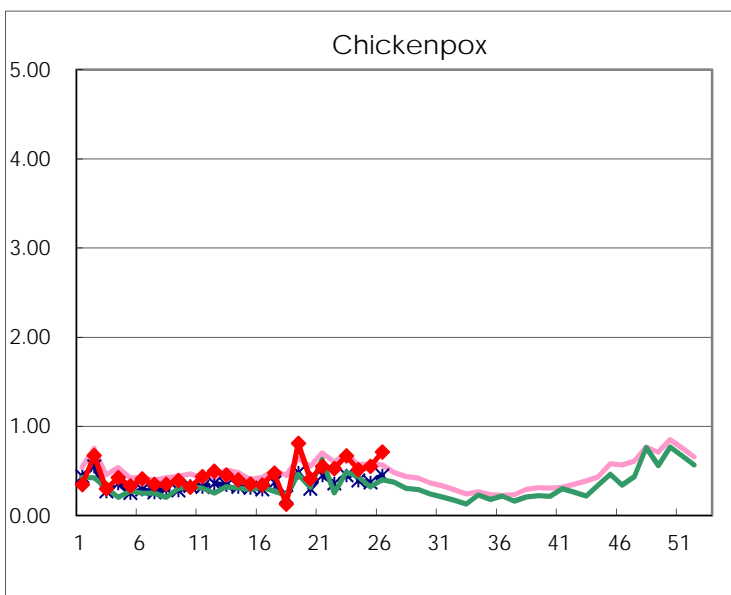
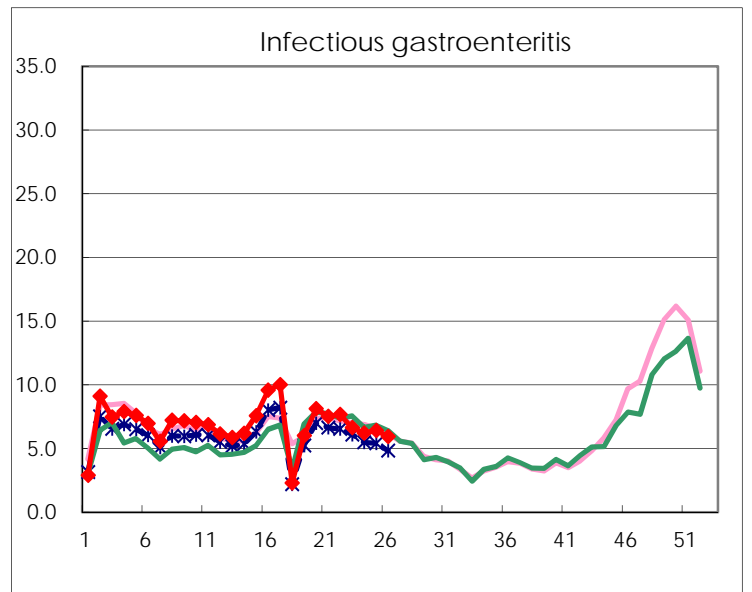
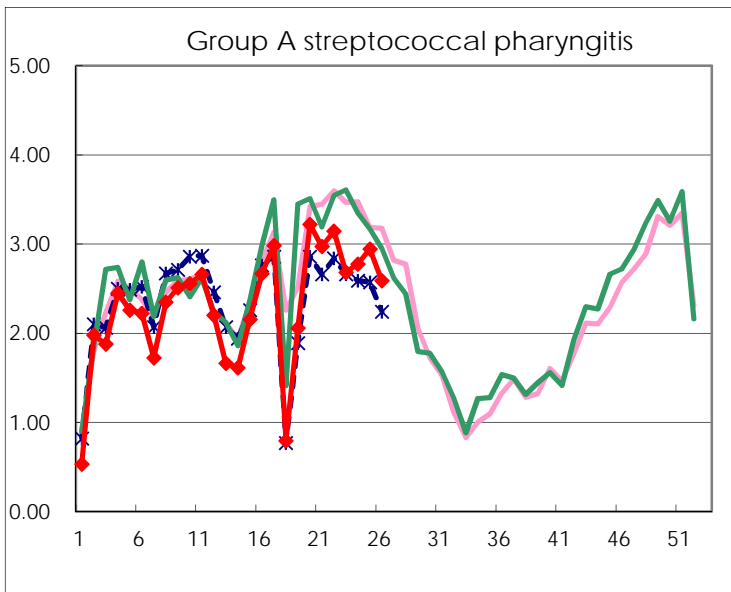
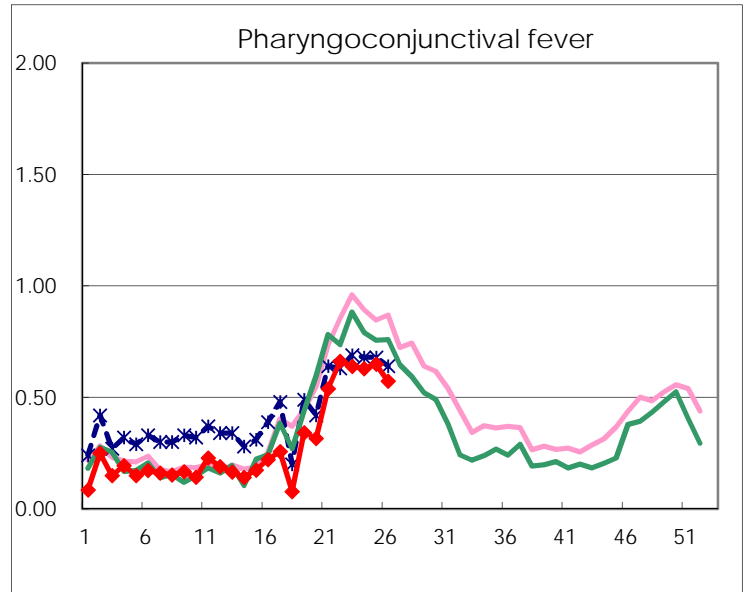
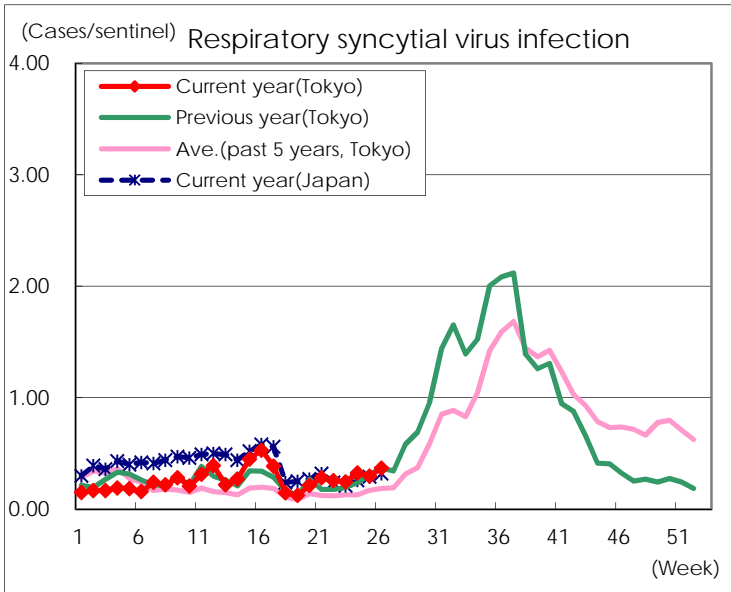
Category	Diseases	Tokyo					Japan	
		23rd	24th	25th	26th	Cum 2019	26th	Cum 2019
V	Amebiasis	2	3	2	2	85	10	431
	Viral hepatitis(excluding hepatitis A and E)	5	2	1	1	39	3	156
	CRE infection	1	2	5	3	95	27	952
	Acute Flaccid Paralysis (excluding Acute poliomyelitis)					3	1	36
	Acute encephalitis(excluding JE and WNE)	2		1	1	48	8	497
	Cryptosporidiosis					2		8
	Creutzfeldt-Jakob disease	2				12	5	91
	Severe invasive streptococcal infections(TSLs)	3	5	3	5	63	20	472
	Acquired immunodeficiency syndrome (AIDS)	10	9	7	3	193	17	583
	Giardiasis					3	1	23
	Invasive <i>Haemophilus influenzae</i> disease	1	4		1	48	7	312
	Invasive meningococcal disease					1	2	24
	Invasive pneumococcal disease	8	6	7	8	235	30	2,002
	Varicella (limited to hospitalized case)	1	1	3	3	36	9	246
	Congenital rubella syndrome					1		3
	Syphilis	43	44	30	39	877	97	3,281
	Disseminated cryptococcosis					7		70
	Tetanus			1		4	1	51
	Vancomycin-resistant <i>S. aureus</i> infection							
	Vancomycin-resistant <i>Enterococcus</i> infection	1				4		37
	Pertussis	22	21	11	22	776	325	8,115
	Rubella	29	27	36	15	685	32	1,896
Measles		1		1	101	6	644	
MDRA infection					2		17	

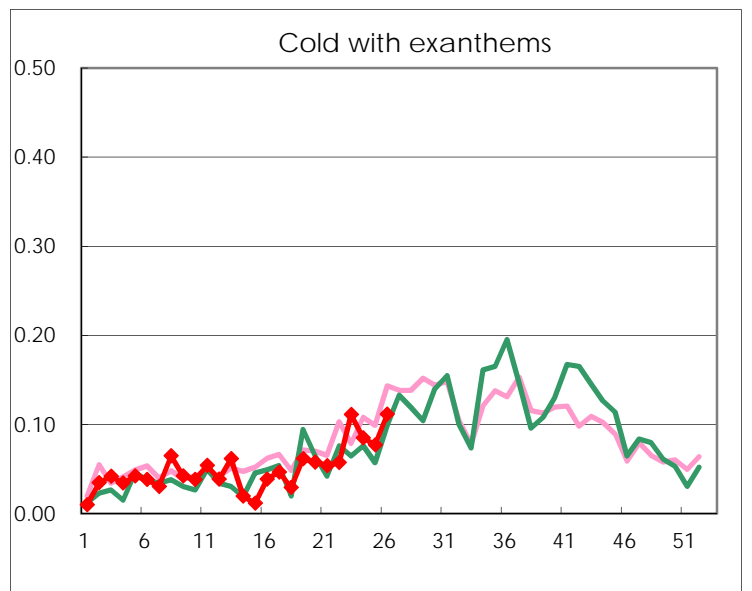
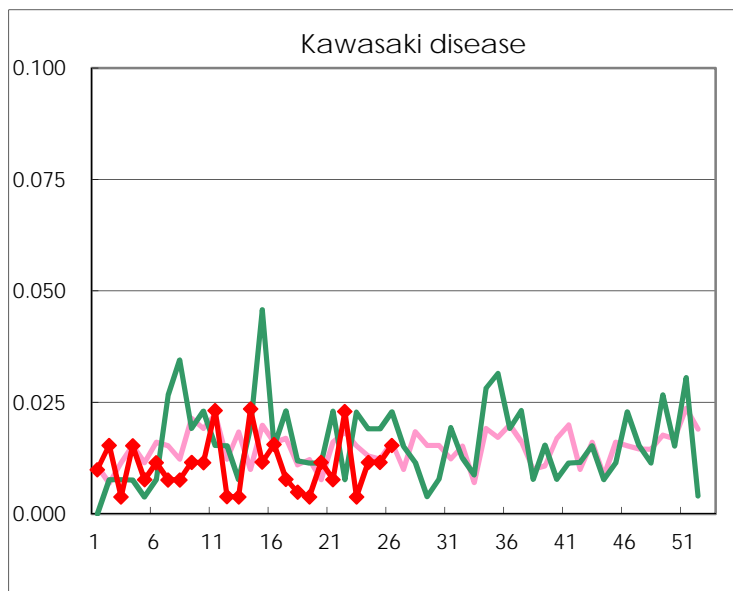
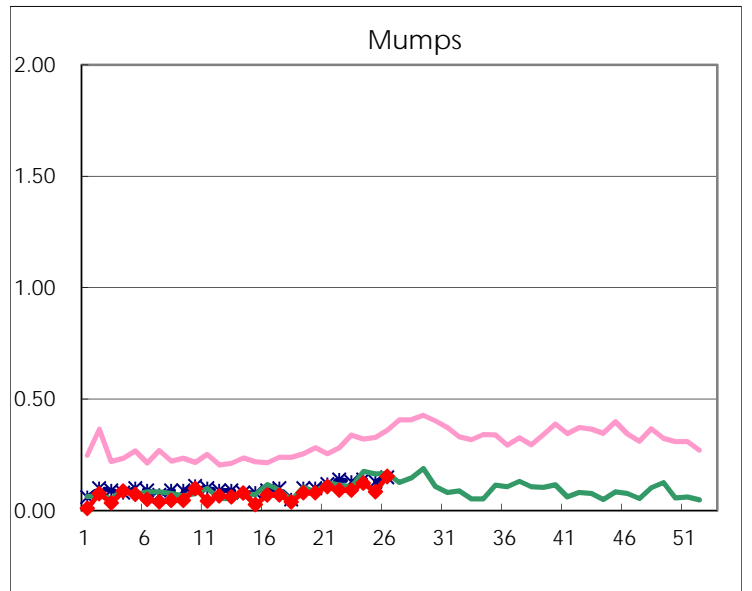
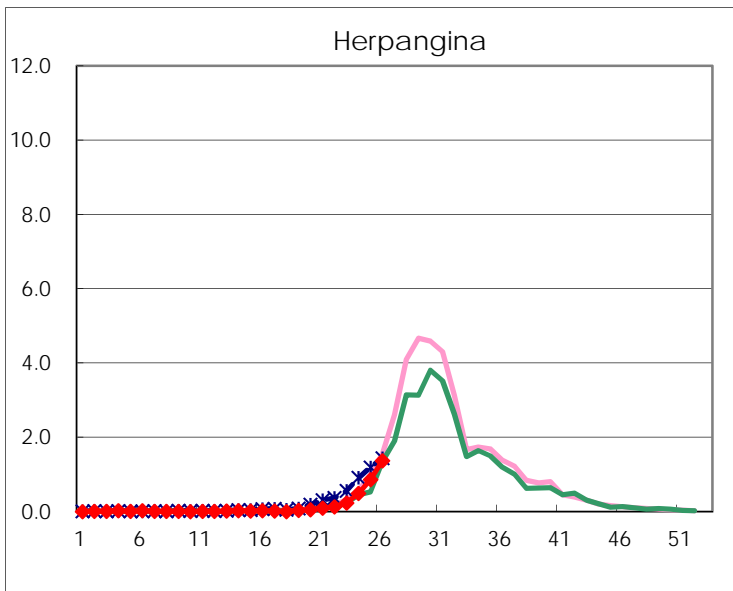
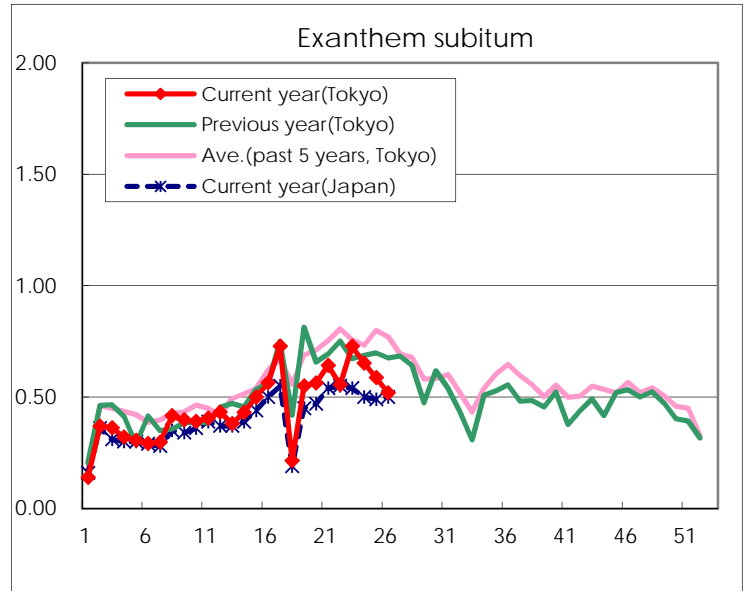
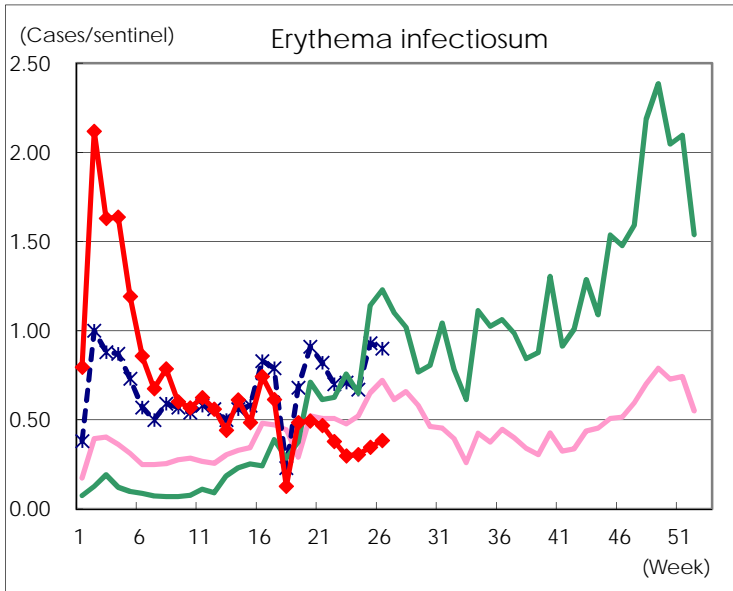
Number of patients with the diseases to be reported
by the designated clinics and hospitals

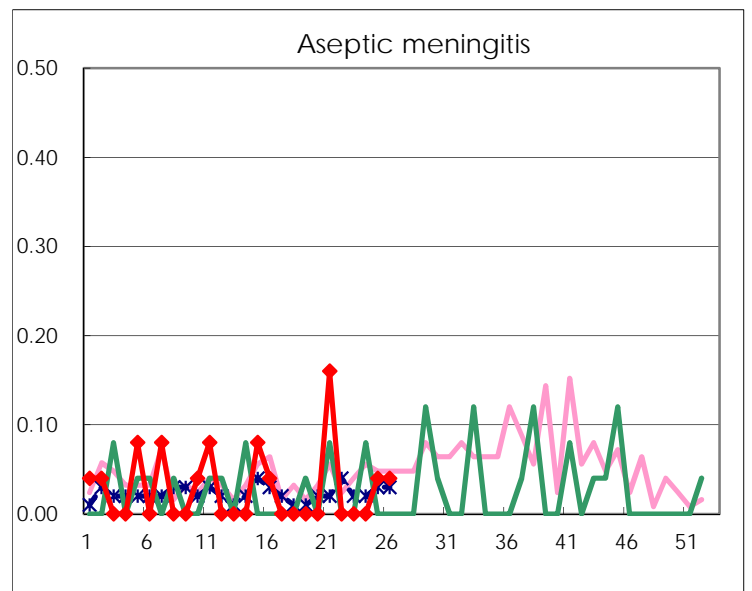
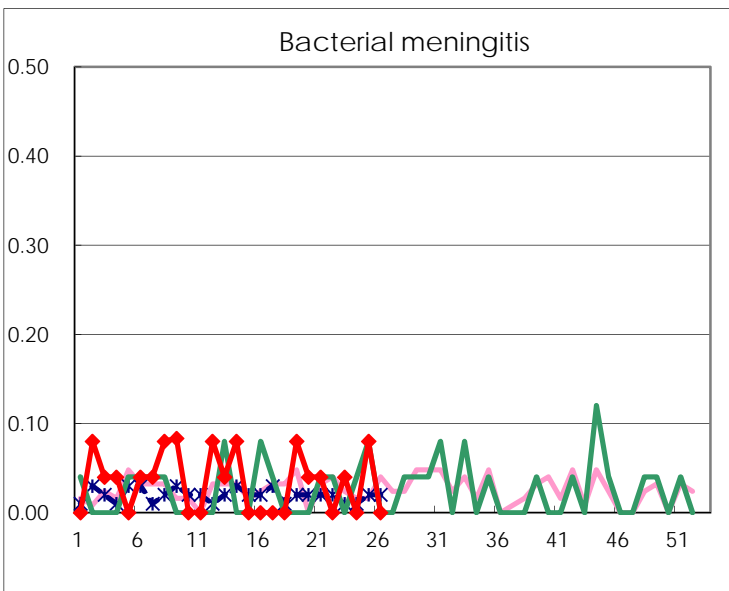
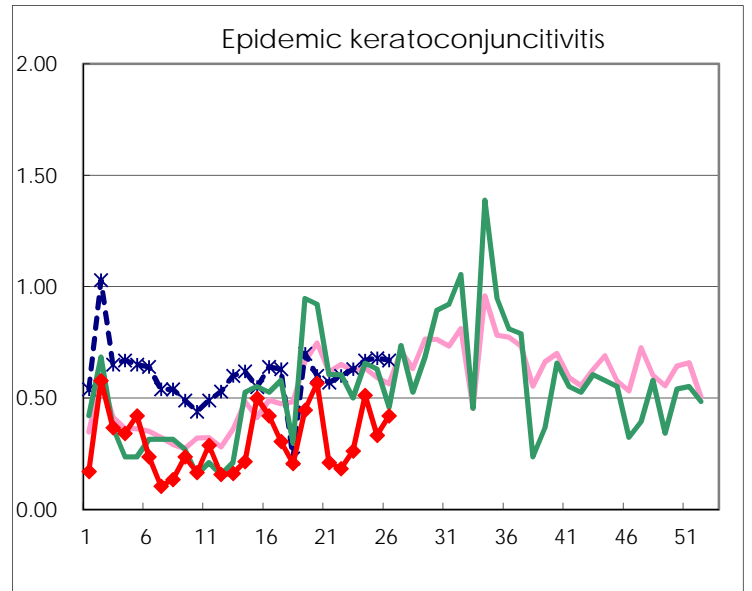
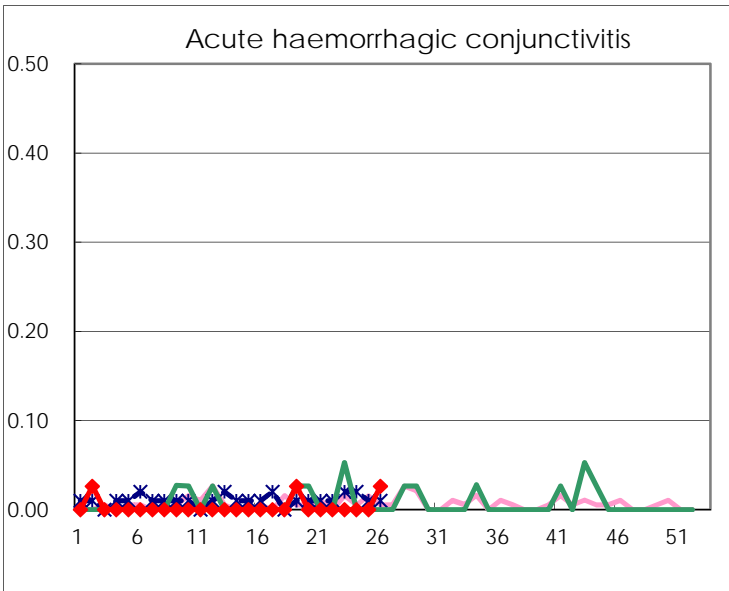
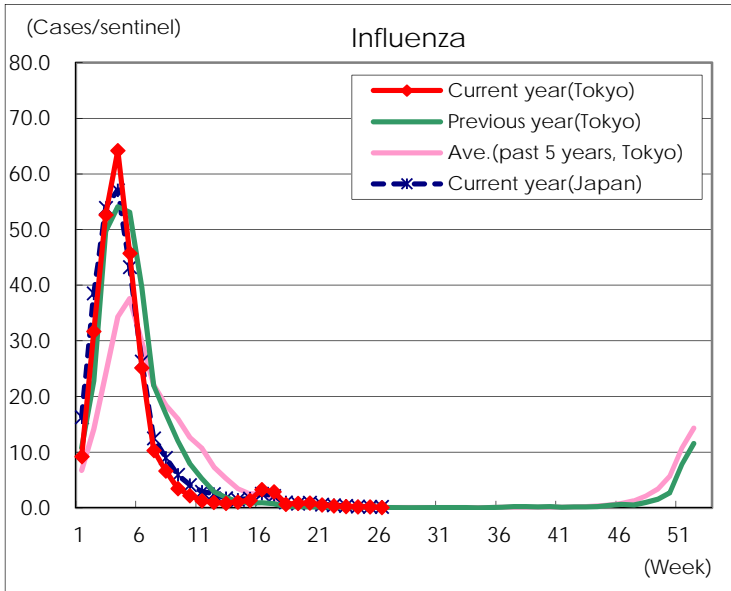
Diseases	Tokyo				
	23rd	24th	25th	26th	/sentinel
Respiratory syncytial virus infection	64	84	77	96	0.37
Pharyngoconjunctival fever	167	163	168	149	0.57
Group A streptococcal pharyngitis	700	719	763	673	2.59
Infectious gastroenteritis	1,732	1,607	1,661	1,540	5.92
Chickenpox	174	133	142	185	0.71
Hand, foot, and mouth disease	252	428	708	1,325	5.10
Erythema infectiosum	78	79	90	100	0.38
Exanthem subitum	190	169	152	135	0.52
Herpangina	61	127	224	357	1.37
Mumps	24	32	22	40	0.15
Kawasaki disease	1	3	3	4	0.02
Cold with exanthems	29	22	20	29	0.11
Influenza	110	87	67	31	0.08
Acute hemorrhagic conjunctivitis				1	0.03
Epidemic keratoconjunctivitis	10	20	12	16	0.42
Bacterial meningitis	1		2		
Aseptic meningitis			1	1	0.04
<i>Mycoplasma pneumoniae</i>	3	3	3	6	0.24
Chlamydial pneumonia (excluding psittacosis)					
Infectious gastroenteritis (only by Rotavirus)	9	3	1	1	0.04
Influenza-Associated Hospitalizations	3	1			

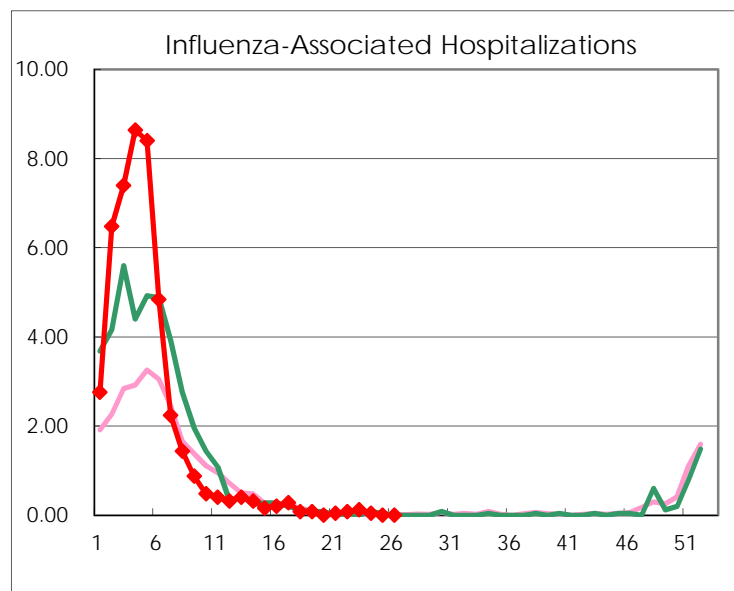
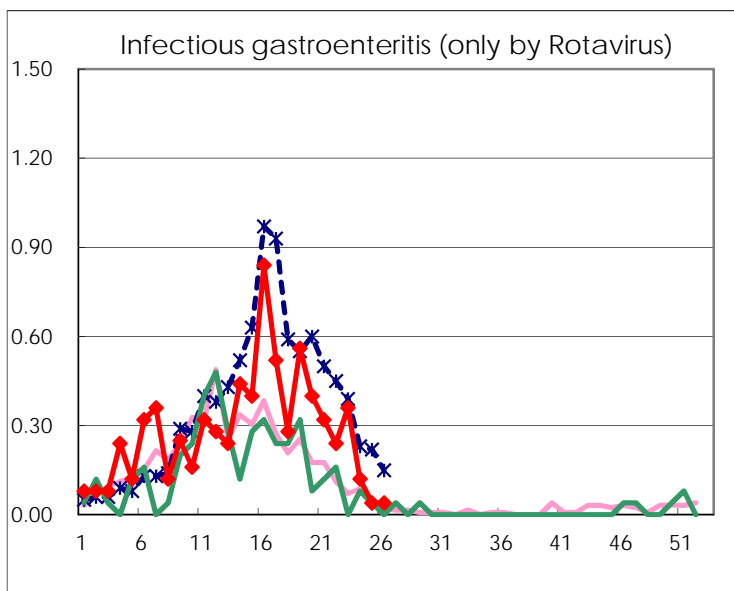
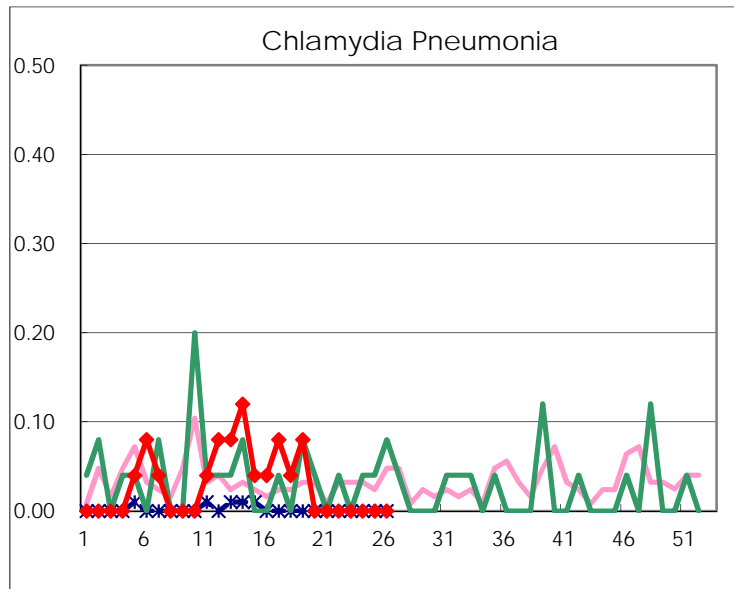
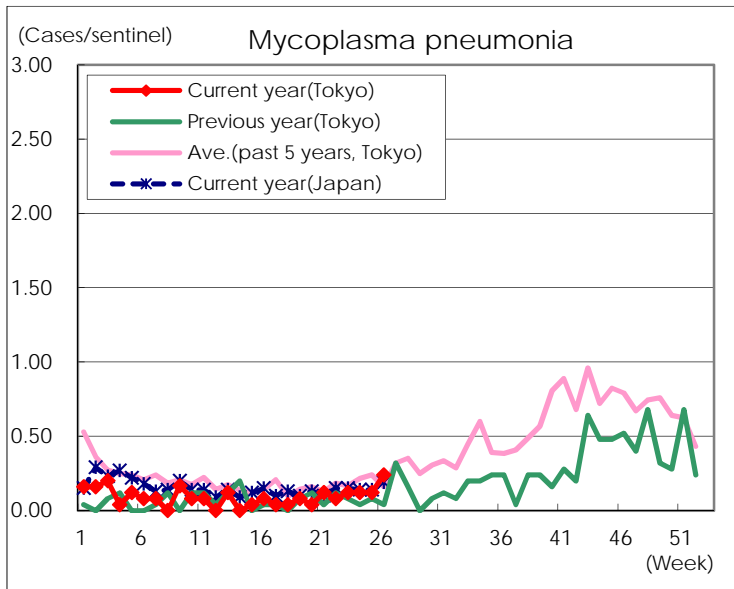
(Blank means 0.)

Disease Trend Graph (weekly reported cases per sentinel in comparison)









Number of sentinel facilities for weekly reporting		
Types of sentinels	Number of sentinels	Sentinels having reported
Pediatric	264	260
Influenza	419	408
Ophthalmic	39	38
Specially-designated	25	25