

**11 July 2019 / Number 27**

## Surveillance System in Tokyo, Japan

The infectious diseases which all physicians must report

All physicians must report to health centers the incidence of the diseases which are shown at page one. Health centers electronically report the individual cases to Tokyo Metropolitan Infectious Disease Surveillance Center.

The infectious diseases required to be reported by the sentinels

The numbers of patients who visit the sentinel clinics or hospitals during a week are reported to health centers in Tokyo. And they electronically report the numbers to Tokyo Metropolitan Infectious Disease Surveillance Center. We have about 500 sentinel clinics and hospitals in Tokyo.

Tokyo Metropolitan Institute of Public Health

TEL:81-3-3363-3213 FAX:81-3-5332-7365

e-mail:[www@tokyo-eiken.go.jp](mailto:www@tokyo-eiken.go.jp)

URL:[idsc.tokyo-eiken.go.jp/](http://idsc.tokyo-eiken.go.jp/)

---

Number of patients with the diseases which all physicians must report

Category	Diseases	Tokyo					Japan	
		24th	25th	26th	27th	Cum 2019	27th	Cum 2019
I	Ebola hemorrhagic fever							
	Crimean-Congo hemorrhagic fever							
	Smallpox							
	South American hemorrhagic fever							
	Plague							
	Marburg disease							
	Lassa fever							
II	Acute poliomyelitis							
	Tuberculosis	66	72	62	79	1,602	389	10,888
	Diphtheria							
	Severe Acute Respiratory Syndrome(SARS)							
	Middle East Respiratory Syndrome (MERS)							
	Avian influenza H5N1							
	Avian influenza H7N9							
III	Cholera					2		3
	Shigellosis			1		11	1	50
	Enterohemorrhagic Escherichia coli infection	12	7	15	16	116	144	1,154
	Typhoid fever					2		18
	Paratyphoid fever					3	1	11
IV	Hepatitis E	3	3		2	68	5	263
	West Nile fever							
	Hepatitis A	5	5	2	2	76	6	250
	Echinococcosis							7
	Yellow fever							
	Psittacosis					3		11
	Omsk hemorrhagic fever							
	Relapsing fever							
	Kyasanur forest disease							
	Q fever							
	Rabies							
	Coccidioidomycosis							1
	Monkeypox							
	Zika virus infection							
	Severe Fever with Thrombocytopenia Syndrome					1	5	49
	Hemorrhagic fever with renal syndrome							
	Western equine encephalitis							
	Tick-borne encephalitis							
	Anthrax							
	Chikungunya fever			1		2		7
	Scrub typhus(Tsutsugamushi disease)						2	80
	Dengue fever			1	3	49	9	161
	Eastern equine encephalitis							
	Avian influenza (excluding H5N1 and H7N9)							
	Nipah virus infection							
	Japanese spotted fever						3	68
	Japanese encephalitis							
	Hantavirus pulmonary syndrome							
	Herpes B virus infection							
	Glanders							
	Brucellosis	1				1		2
	Venezuelan equine encephalitis							
	Hendra virus infection							
	Epidemic typhus							
	Botulism							1
Malaria		1	1		7	1	23	
Tularemia								
Lyme disease							2	
Lyssavirus infection(excluding rabies)								
Rift valley fever								
Melioidosis								
Legionellosis	1	8	6	5	85	58	908	
Leptospirosis					1		4	
Rocky mountain spotted fever								

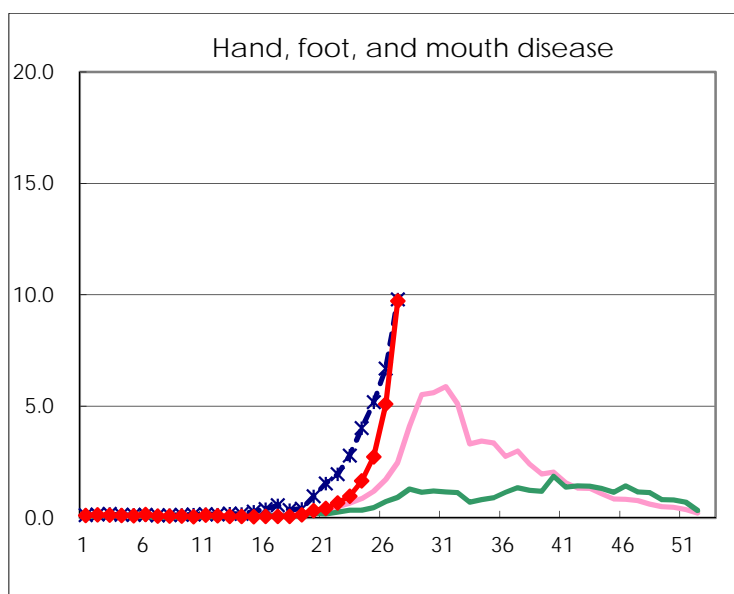
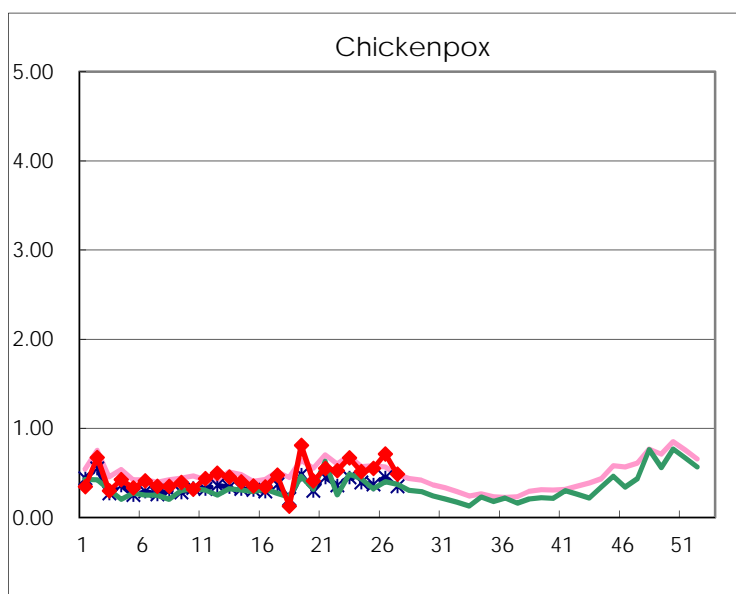
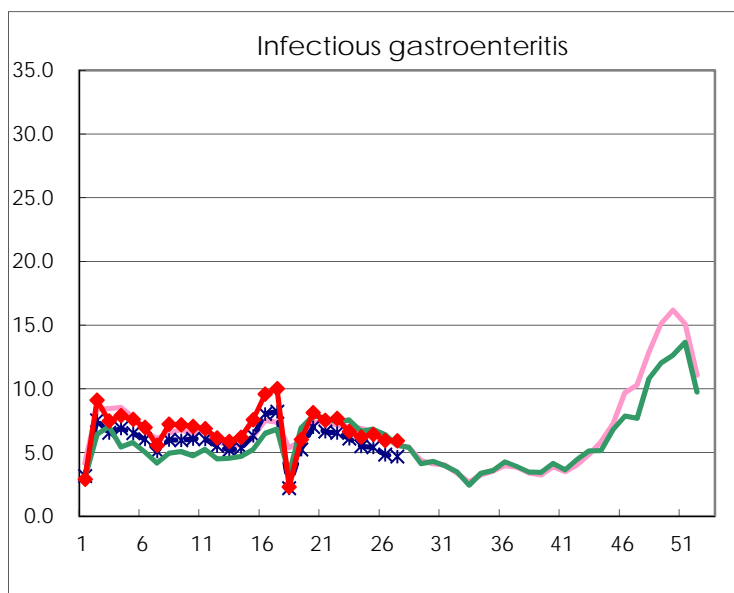
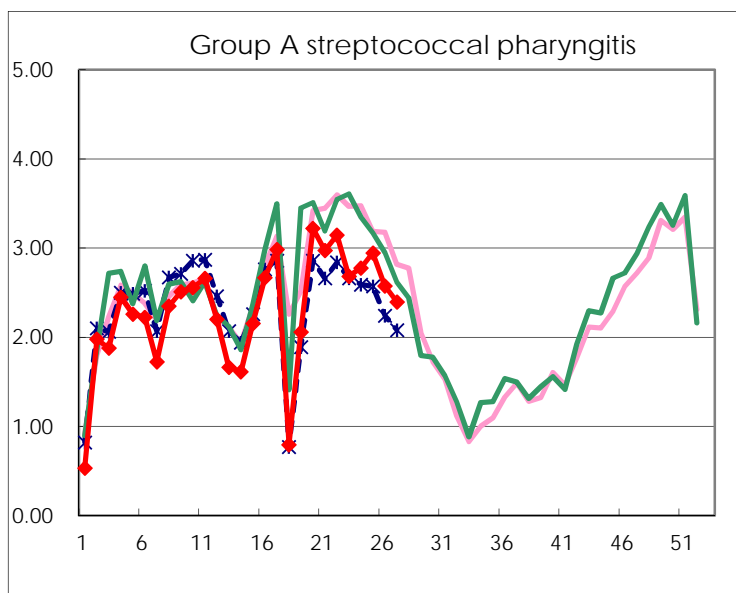
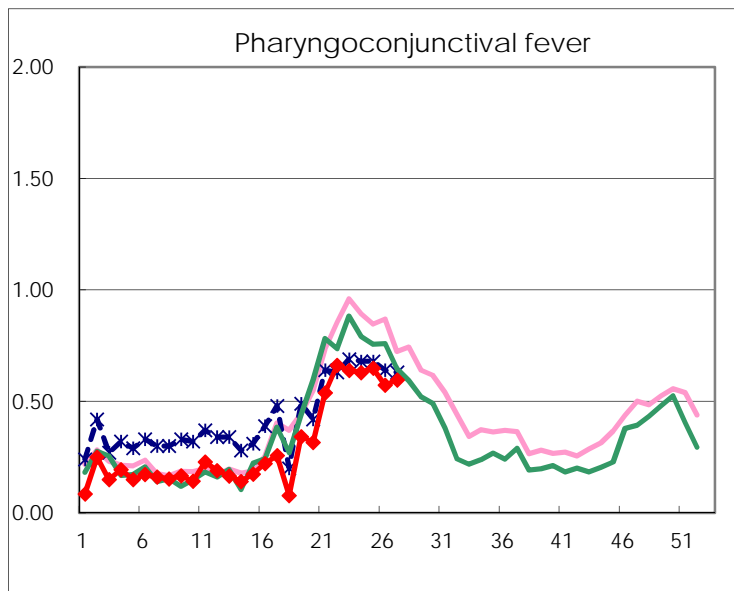
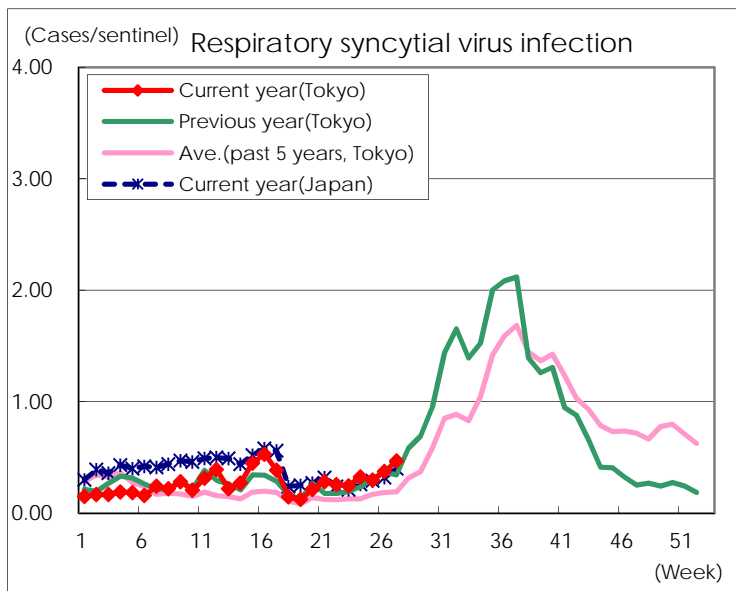
Category	Diseases	Tokyo					Japan	
		24th	25th	26th	27th	Cum 2019	27th	Cum 2019
V	Amebiasis	3	2	2	5	90	10	445
	Viral hepatitis(excluding hepatitis A and E)	2	1	1	2	43	4	166
	CRE infection	2	5	4	1	97	25	986
	Acute Flaccid Paralysis (excluding Acute poliomyelitis)					3	2	38
	Acute encephalitis(excluding JE and WNE)		1	1		48	9	511
	Cryptosporidiosis					2		8
	Creutzfeldt-Jakob disease					12	1	95
	Severe invasive streptococcal infections(TSLs)	5	3	5	1	64	15	491
	Acquired immunodeficiency syndrome (AIDS)	9	7	4	6	200	12	601
	Giardiasis					3	1	24
	Invasive <i>Haemophilus influenzae</i> disease	4		1	1	49	7	320
	Invasive meningococcal disease					1		24
	Invasive pneumococcal disease	6	7	8	3	238	27	2,047
	Varicella (limited to hospitalized case)	1	3	3		36	3	250
	Congenital rubella syndrome					1		3
	Syphilis	44	30	39	33	910	78	3,407
	Disseminated cryptococcosis				1	8	4	77
	Tetanus		1			4	4	55
	Vancomycin-resistant <i>S. aureus</i> infection							
	Vancomycin-resistant <i>Enterococcus</i> infection					4		40
	Pertussis	21	11	23	28	805	320	8,538
Rubella	28	36	18	15	704	28	1,935	
Measles	1		1		101	10	654	
MDRA infection					2		17	

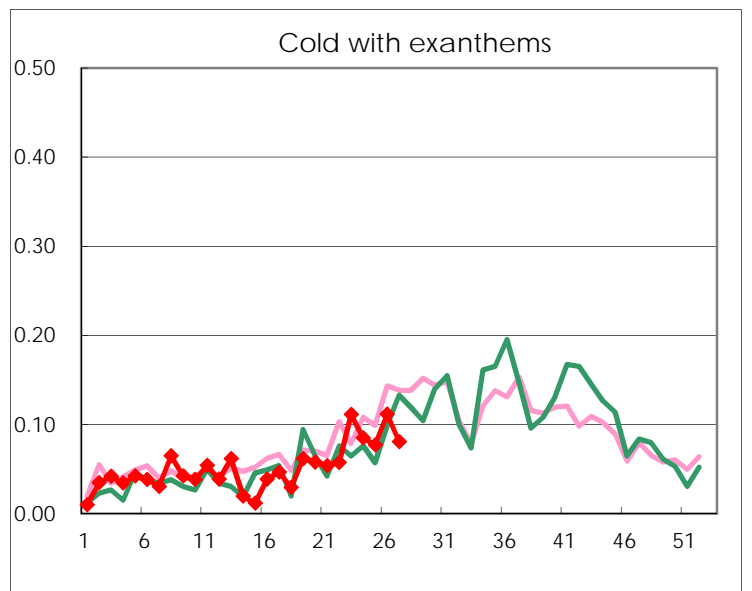
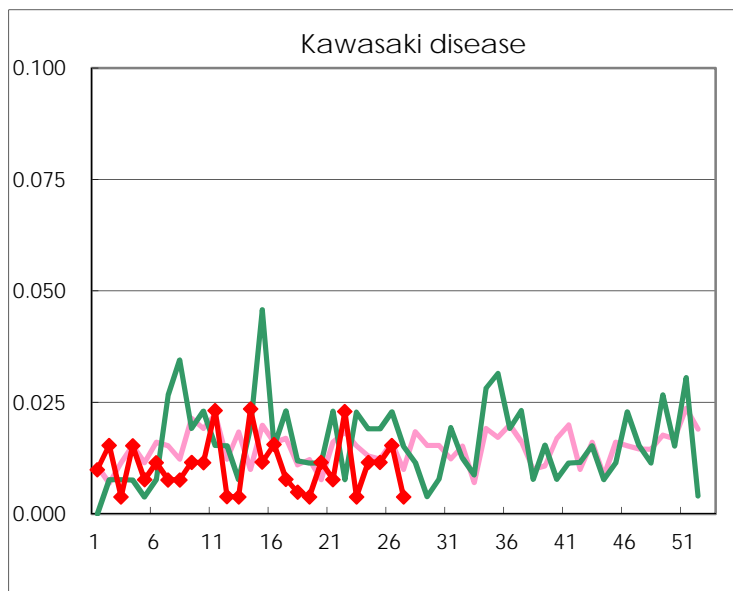
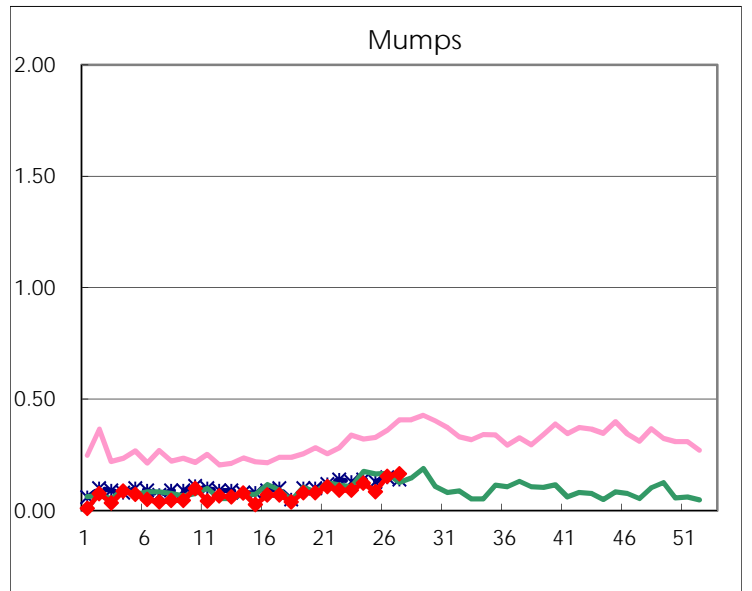
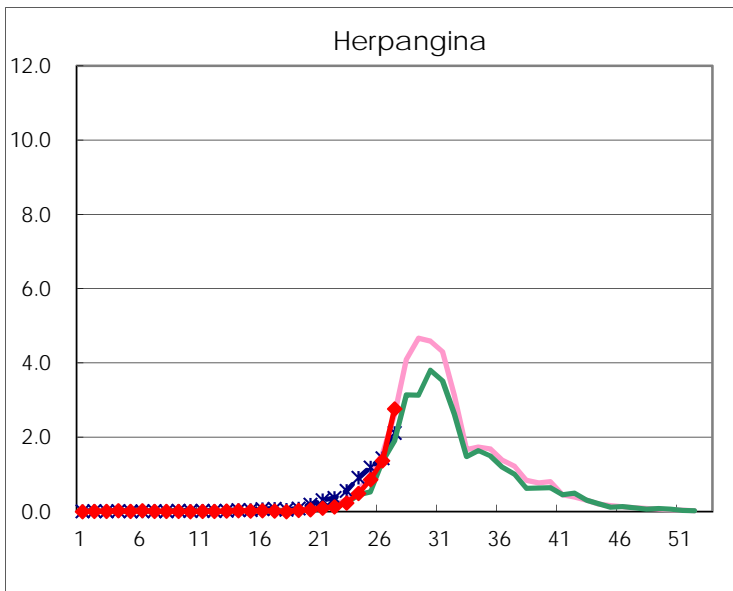
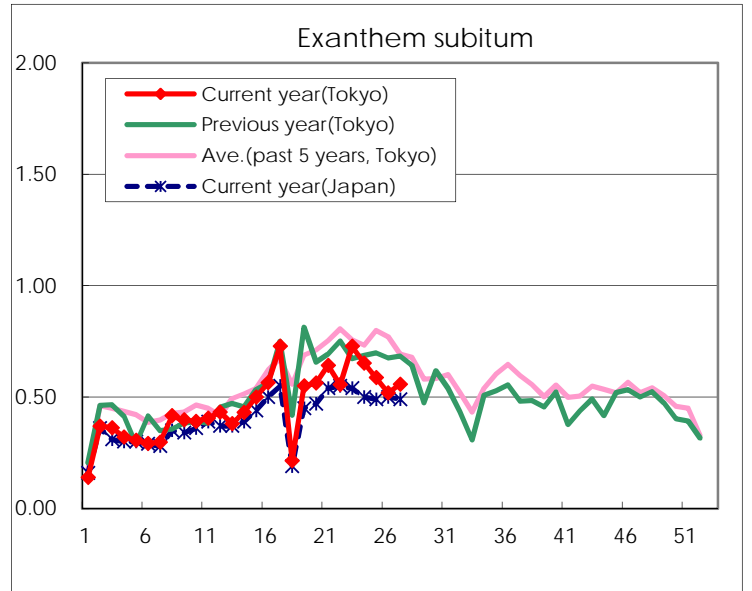
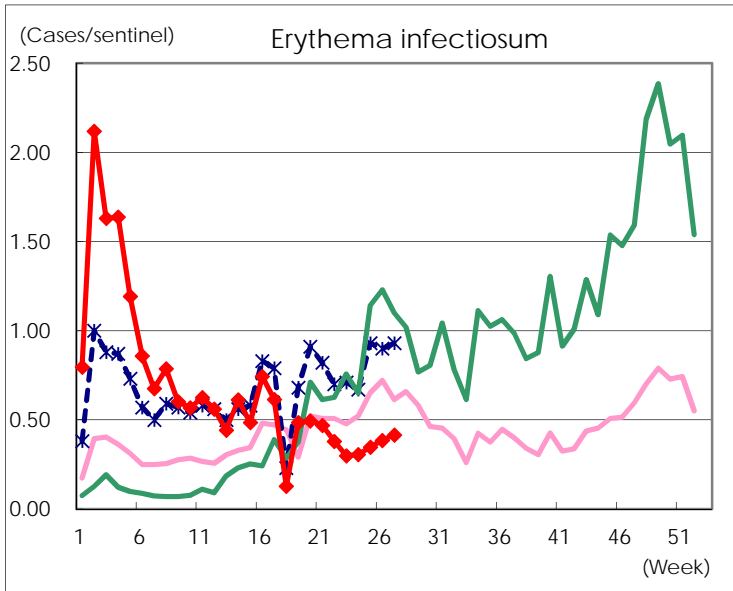
Number of patients with the diseases to be reported  
by the designated clinics and hospitals

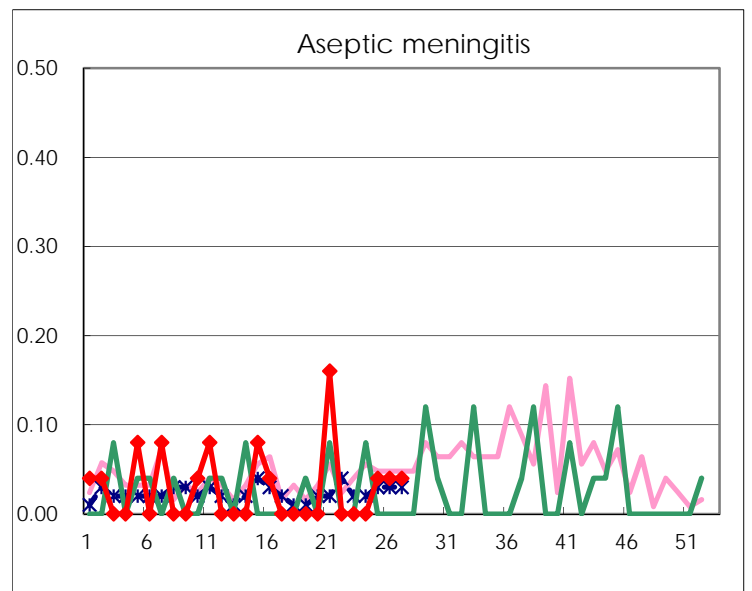
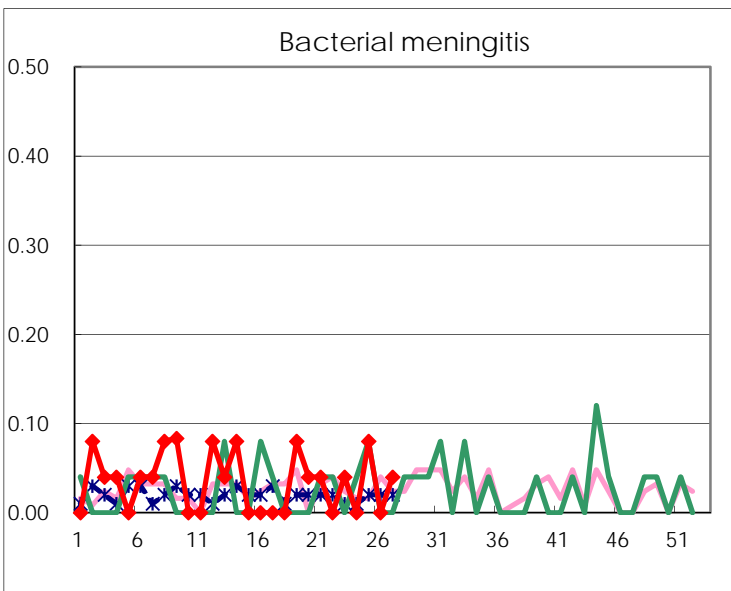
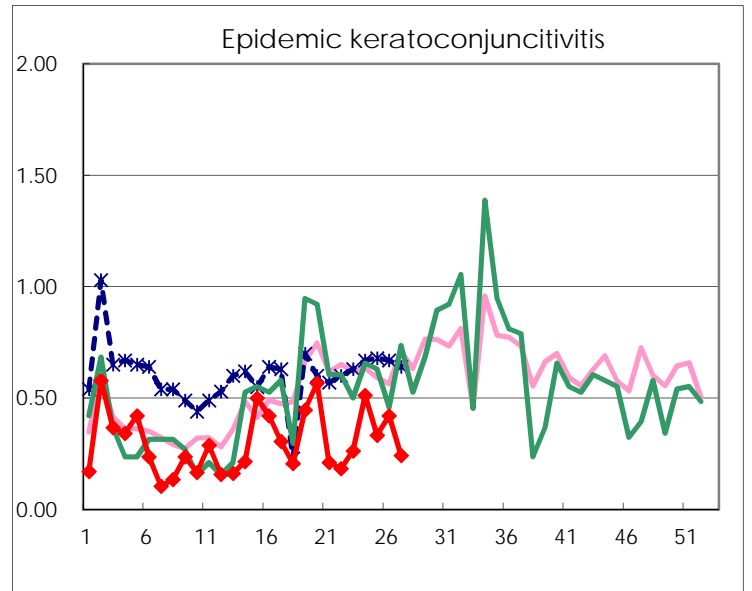
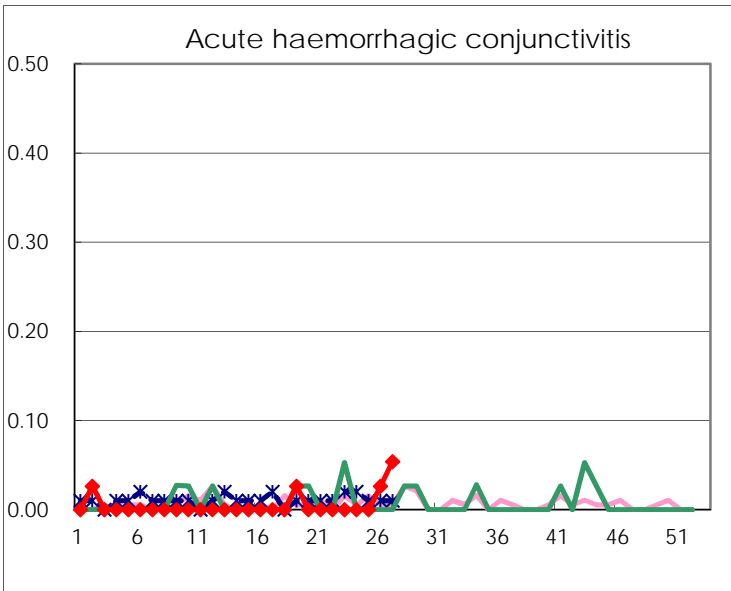
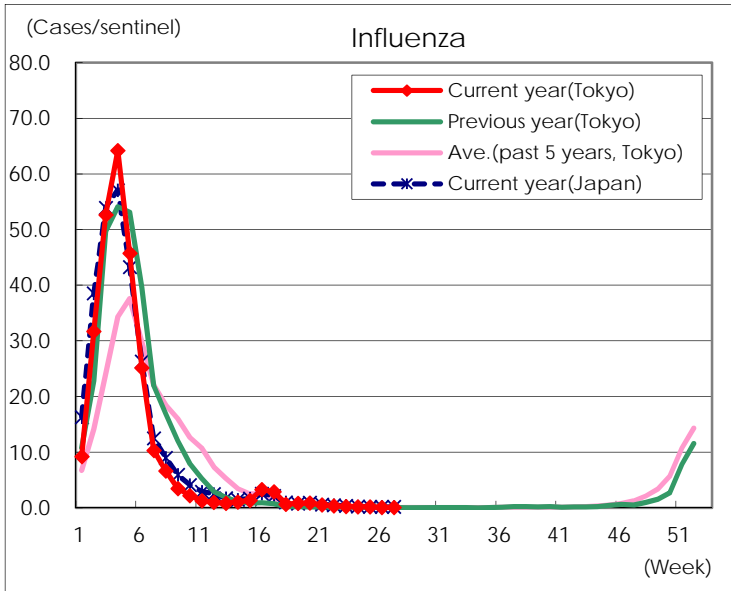
Diseases	Tokyo				
	24th	25th	26th	27th	/sentinel
Respiratory syncytial virus infection	84	77	97	122	0.47
Pharyngoconjunctival fever	163	168	149	155	0.60
Group A streptococcal pharyngitis	719	763	669	623	2.40
Infectious gastroenteritis	1,607	1,661	1,544	1,536	5.91
Chickenpox	133	142	185	126	0.48
Hand, foot, and mouth disease	428	708	1,325	2,528	9.72
Erythema infectiosum	79	90	100	108	0.42
Exanthem subitum	169	152	135	145	0.56
Herpangina	127	224	357	719	2.77
Mumps	32	22	40	43	0.17
Kawasaki disease	3	3	4	1	
Cold with exanthems	22	20	29	21	0.08
Influenza	87	67	31	24	0.06
Acute hemorrhagic conjunctivitis			1	2	0.05
Epidemic keratoconjunctivitis	20	12	16	9	0.24
Bacterial meningitis		2		1	0.04
Aseptic meningitis		1	1	1	0.04
<i>Mycoplasma pneumoniae</i>	3	3	6	9	0.36
Chlamydial pneumonia (excluding psittacosis)					
Infectious gastroenteritis (only by Rotavirus)	3	1	1		
Influenza-Associated Hospitalizations	1				

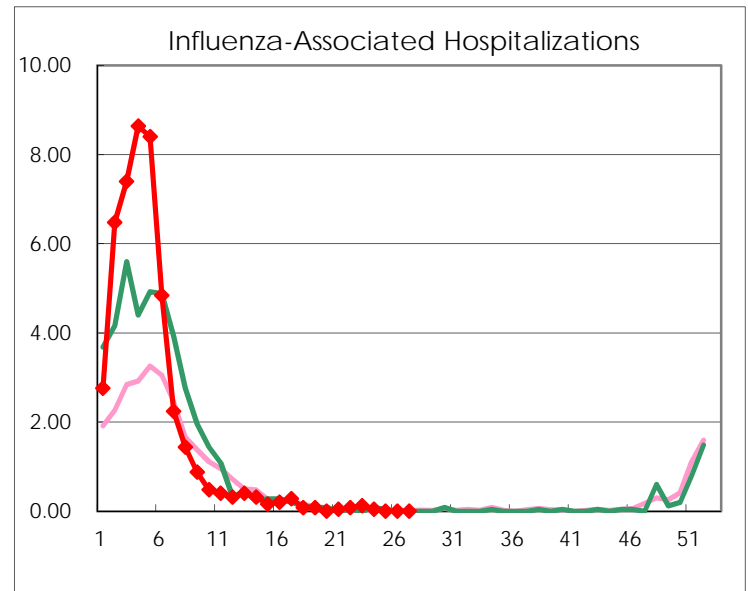
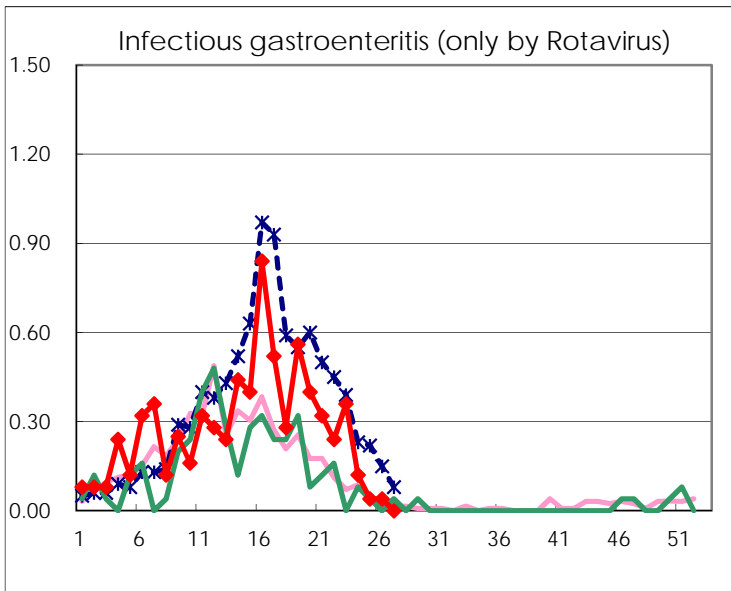
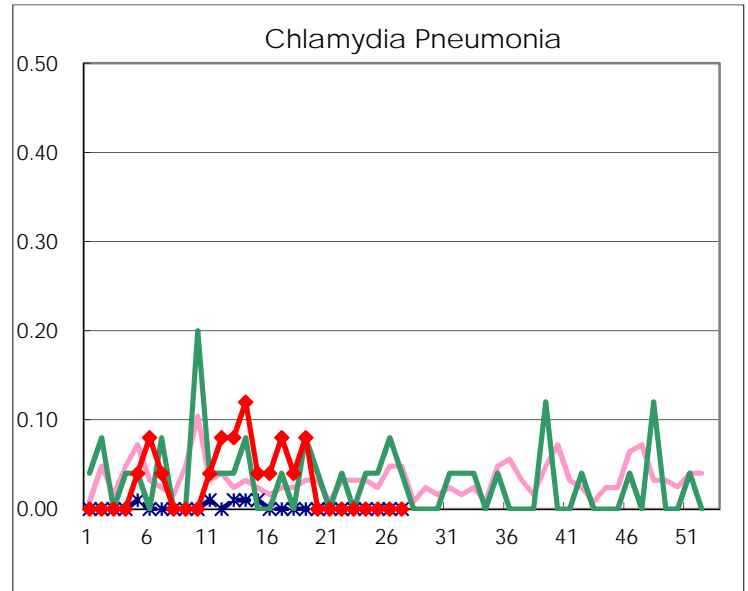
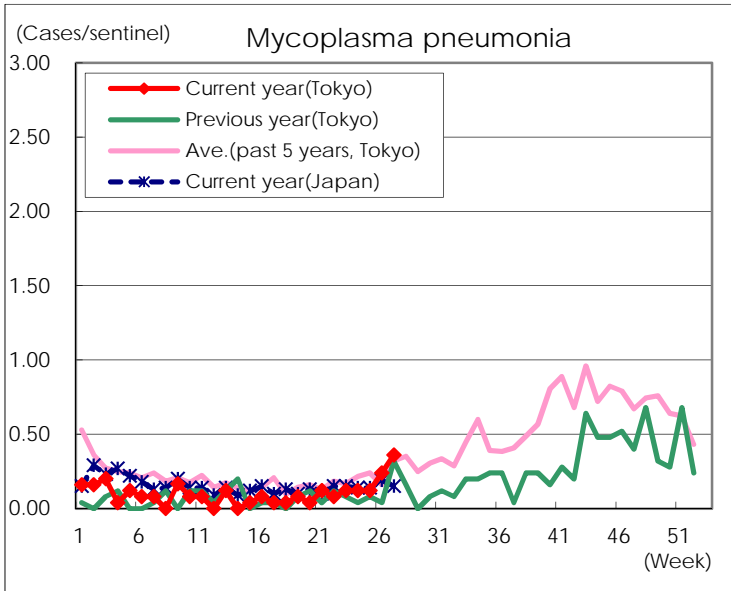
( Blank means 0. )

# Disease Trend Graph (weekly reported cases per sentinel in comparison)









Number of sentinel facilities for weekly reporting		
Types of sentinels	Number of sentinels	Sentinels having reported
Pediatric	264	260
Influenza	419	409
Ophthalmic	39	37
Specially-designated	25	25