

18 July 2019 / Number 28

Surveillance System in Tokyo, Japan

The infectious diseases which all physicians must report

All physicians must report to health centers the incidence of the diseases which are shown at page one. Health centers electronically report the individual cases to Tokyo Metropolitan Infectious Disease Surveillance Center.

The infectious diseases required to be reported by the sentinels

The numbers of patients who visit the sentinel clinics or hospitals during a week are reported to health centers in Tokyo. And they electronically report the numbers to Tokyo Metropolitan Infectious Disease Surveillance Center. We have about 500 sentinel clinics and hospitals in Tokyo.

Tokyo Metropolitan Institute of Public Health

TEL:81-3-3363-3213 FAX:81-3-5332-7365

e-mail:www@tokyo-eiken.go.jp

URL:idsc.tokyo-eiken.go.jp/

Number of patients with the diseases which all physicians must report

Category	Diseases	Tokyo					Japan	
		25th	26th	27th	28th	Cum 2019	28th	Cum 2019
I	Ebola hemorrhagic fever							
	Crimean-Congo hemorrhagic fever							
	Smallpox							
	South American hemorrhagic fever							
	Plague							
	Marburg disease							
	Lassa fever							
II	Acute poliomyelitis							
	Tuberculosis	76	66	81	73	1,686	363	11,359
	Diphtheria							
	Severe Acute Respiratory Syndrome(SARS)							
	Middle East Respiratory Syndrome (MERS)							
	Avian influenza H5N1							
	Avian influenza H7N9							
III	Cholera					2		3
	Shigellosis		1		1	12	1	51
	Enterohemorrhagic Escherichia coli infection	7	15	16	17	133	137	1,301
	Typhoid fever					2		18
	Paratyphoid fever					3		11
IV	Hepatitis E	3		2	5	72	14	279
	West Nile fever							
	Hepatitis A	5	2	2	4	80	5	255
	Echinococcosis						2	9
	Yellow fever							
	Psittacosis					3		11
	Omsk hemorrhagic fever							
	Relapsing fever						1	1
	Kyasanur forest disease							
	Q fever							
	Rabies							
	Coccidioidomycosis							1
	Monkeypox							
	Zika virus infection							
	Severe Fever with Thrombocytopenia Syndrome					1	3	53
	Hemorrhagic fever with renal syndrome							
	Western equine encephalitis							
	Tick-borne encephalitis							
	Anthrax							
	Chikungunya fever		1			2		7
	Scrub typhus(Tsutsugamushi disease)						1	81
	Dengue fever		1	3	2	51	5	172
	Eastern equine encephalitis							
	Avian influenza (excluding H5N1 and H7N9)							
	Nipah virus infection							
	Japanese spotted fever						12	83
	Japanese encephalitis							
	Hantavirus pulmonary syndrome							
	Herpes B virus infection							
	Glanders							
	Brucellosis					1		2
	Venezuelan equine encephalitis							
	Hendra virus infection							
	Epidemic typhus							
Botulism							1	
Malaria	1	1			7	1	24	
Tularemia								
Lyme disease							4	
Lyssavirus infection(excluding rabies)								
Rift valley fever								
Melioidosis								
Legionellosis	8	6	5	5	90	72	987	
Leptospirosis					1	1	5	
Rocky mountain spotted fever								

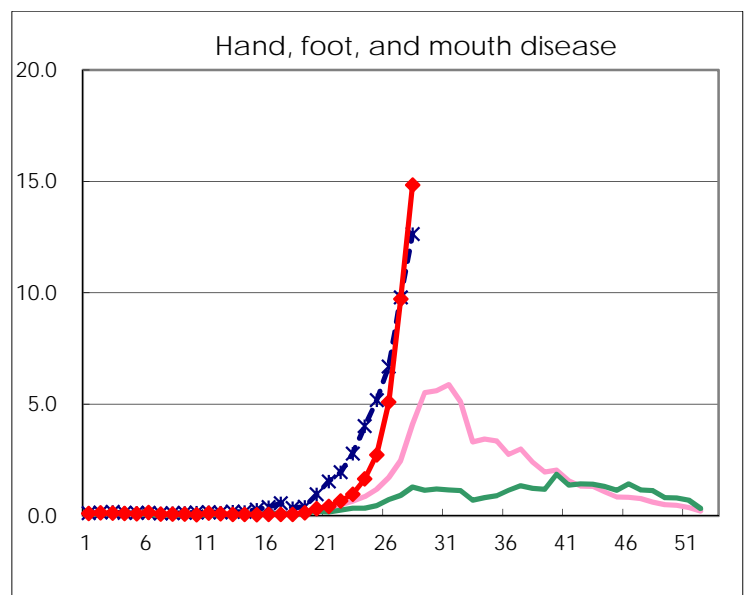
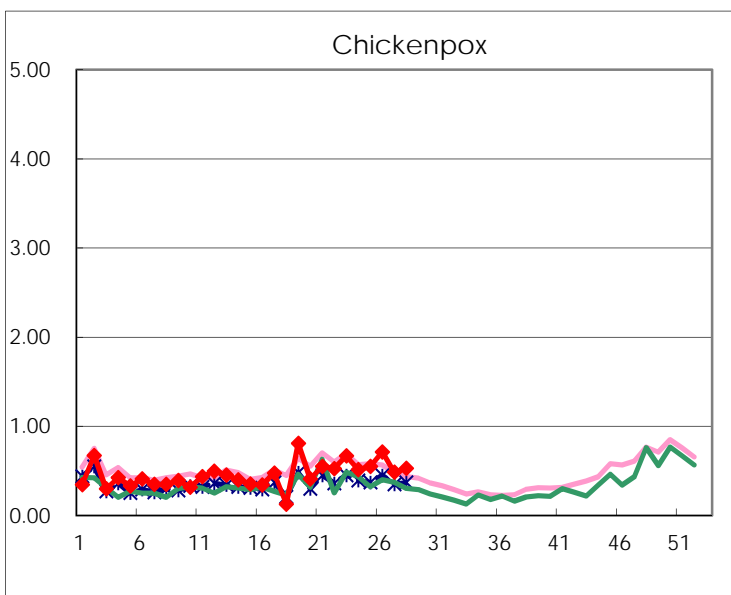
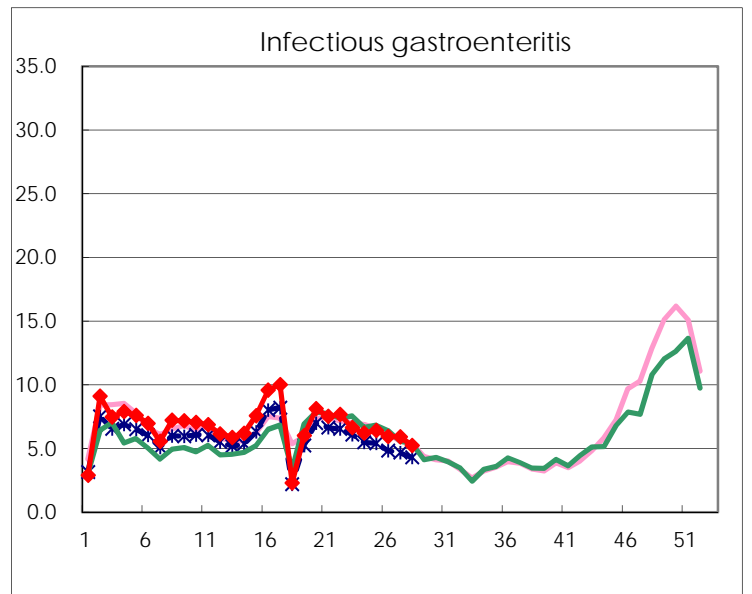
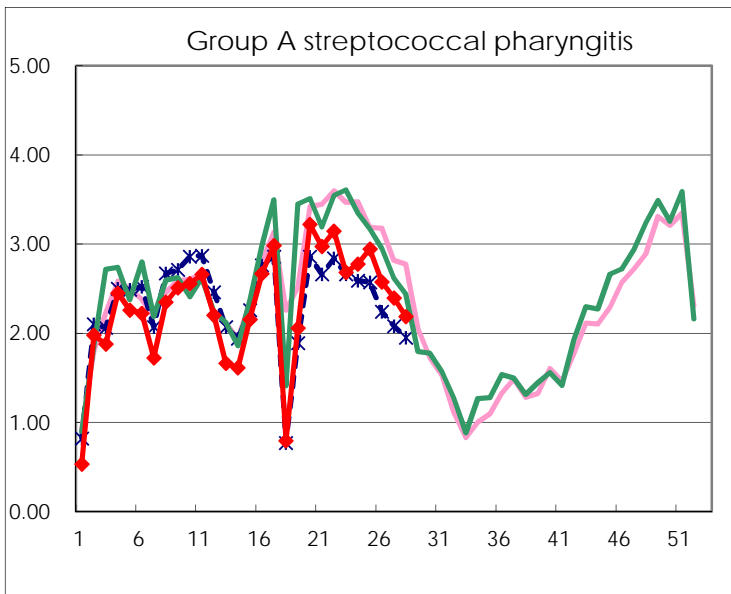
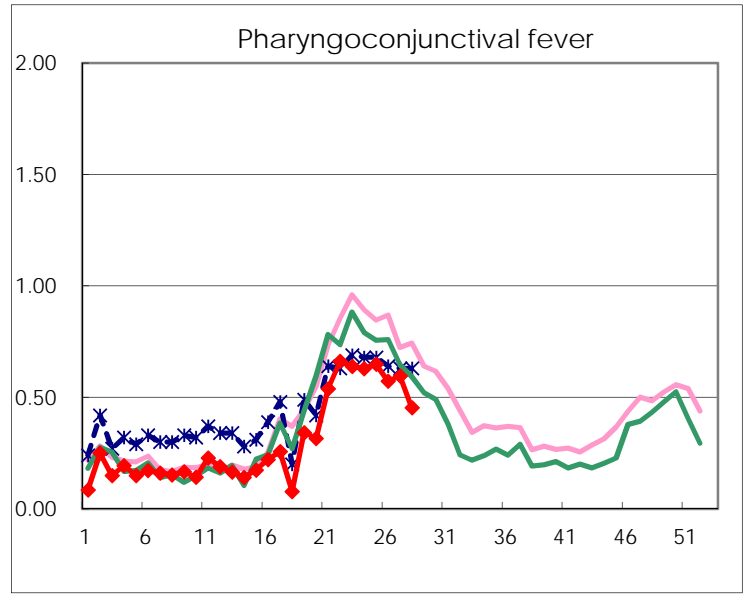
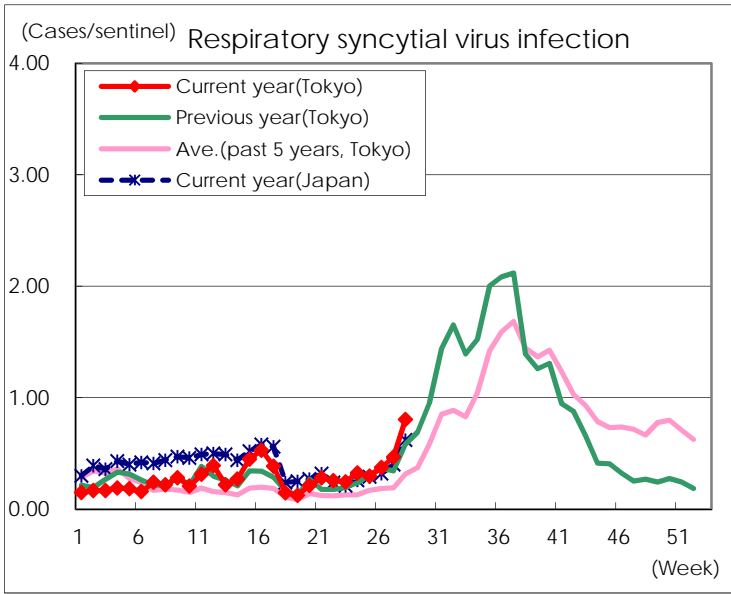
Category	Diseases	Tokyo					Japan	
		25th	26th	27th	28th	Cum 2019	28th	Cum 2019
V	Amebiasis	2	2	5	1	91	11	460
	Viral hepatitis(excluding hepatitis A and E)	1	1	2	3	46	2	170
	CRE infection	5	4	1	1	98	18	1,023
	Acute Flaccid Paralysis (excluding Acute poliomyelitis)					3	1	39
	Acute encephalitis(excluding JE and WNE)	1	1			48	11	524
	Cryptosporidiosis					2		8
	Creutzfeldt-Jakob disease					12	2	97
	Severe invasive streptococcal infections(TSLs)	3	5	1	4	68	11	510
	Acquired immunodeficiency syndrome (AIDS)	7	4	6	5	205	10	618
	Giardiasis					3		25
	Invasive <i>Haemophilus influenzae</i> disease		1	1	3	52	6	329
	Invasive meningococcal disease					1	1	25
	Invasive pneumococcal disease	7	8	3	4	242	21	2,084
	Varicella (limited to hospitalized case)	3	3		3	39	6	259
	Congenital rubella syndrome					1		3
	Syphilis	31	39	36	37	951	71	3,540
	Disseminated cryptococcosis			1		8	1	78
	Tetanus	1				4	4	60
	Vancomycin-resistant <i>S. aureus</i> infection							
	Vancomycin-resistant <i>Enterococcus</i> infection				1	5	2	42
	Pertussis	11	23	29	34	840	295	8,965
Rubella	36	18	18	20	727	29	1,973	
Measles		1			101	5	659	
MDRA infection					2		17	

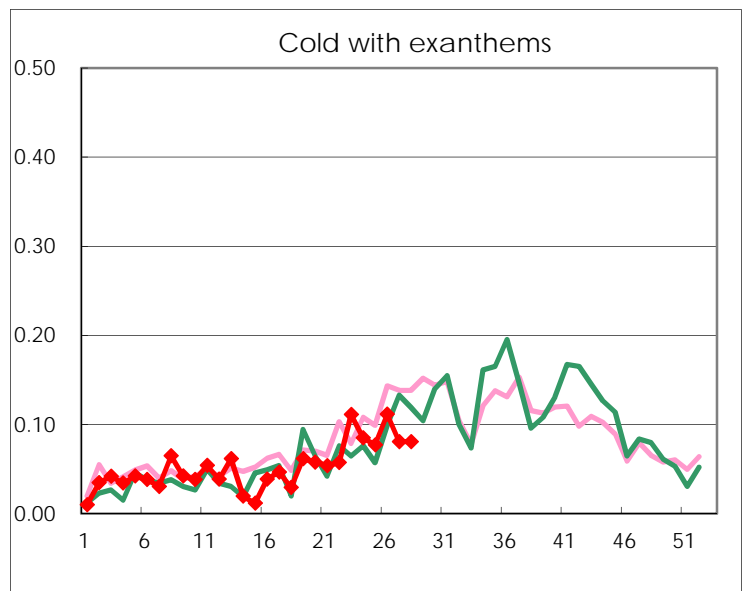
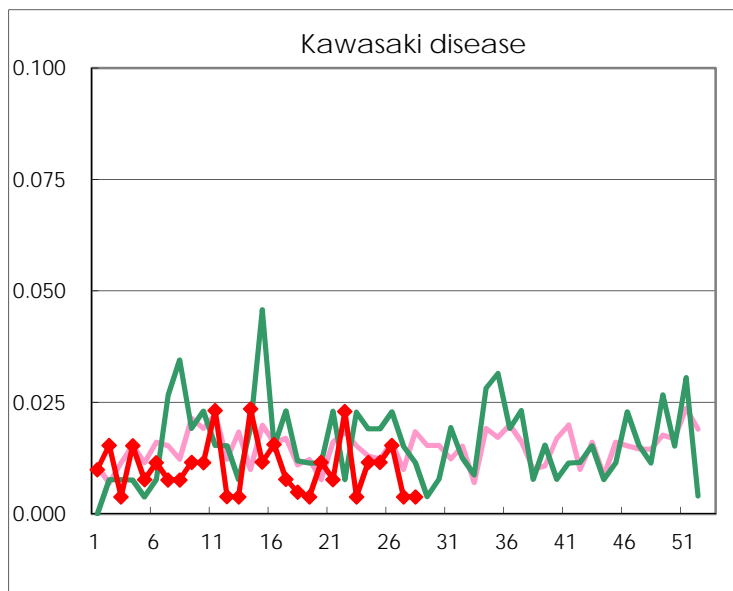
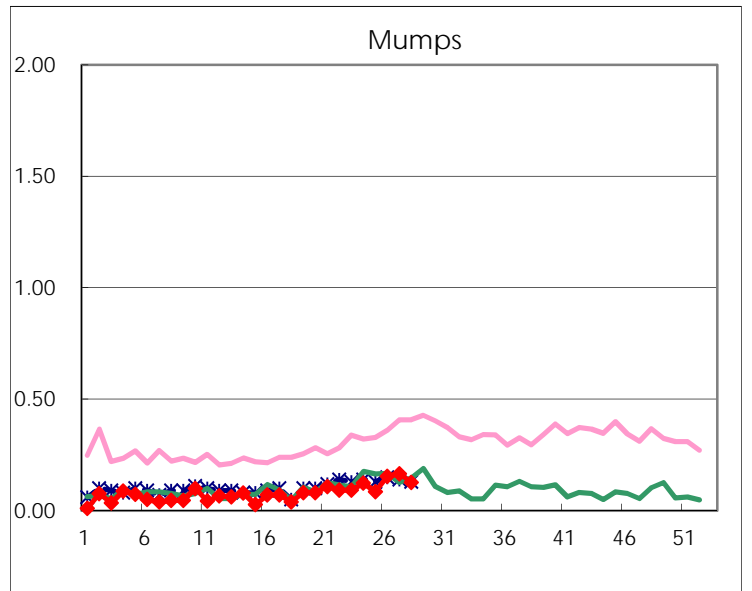
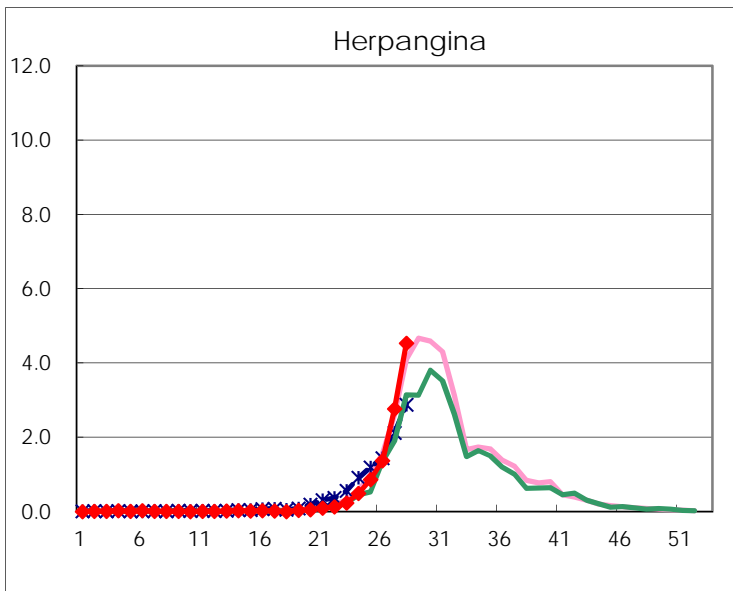
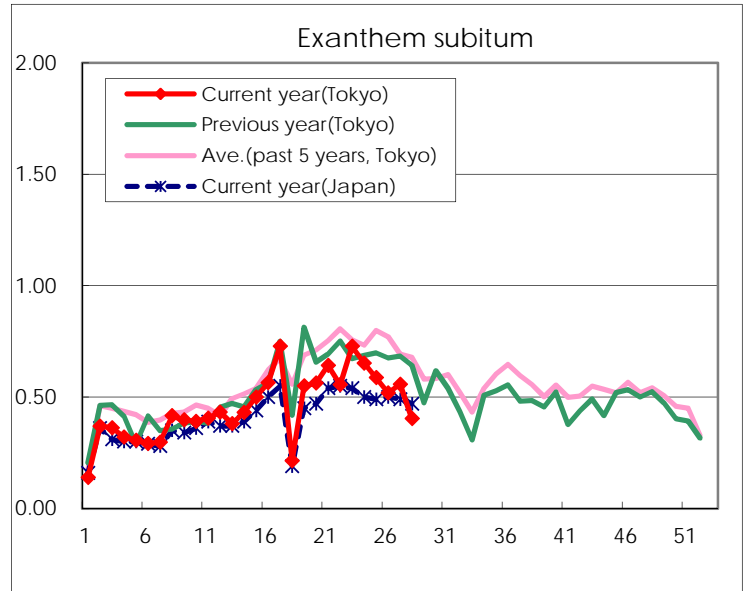
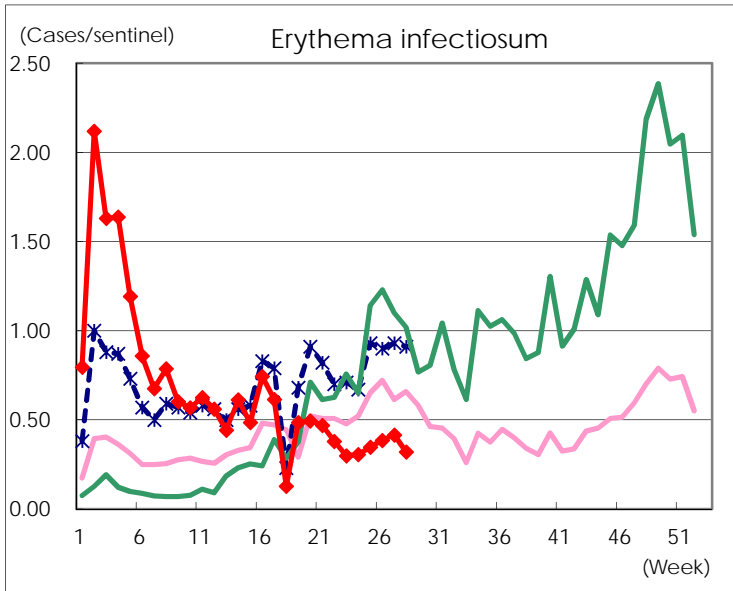
Number of patients with the diseases to be reported
by the designated clinics and hospitals

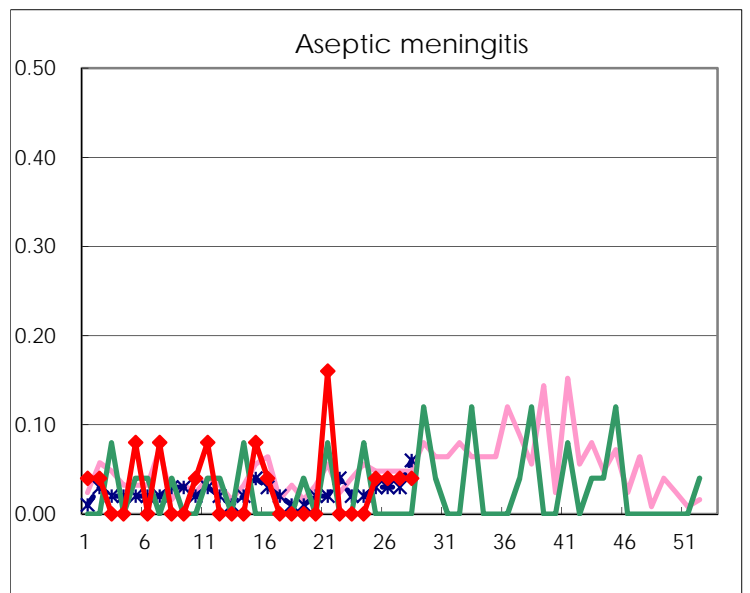
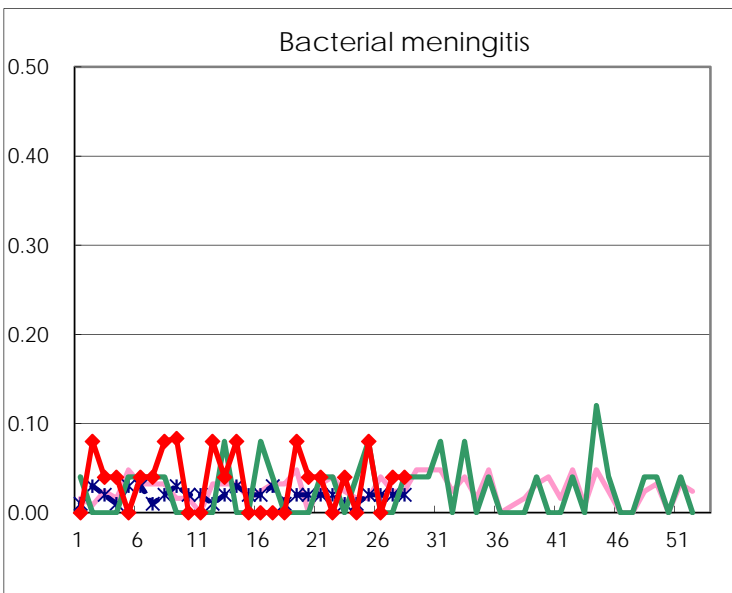
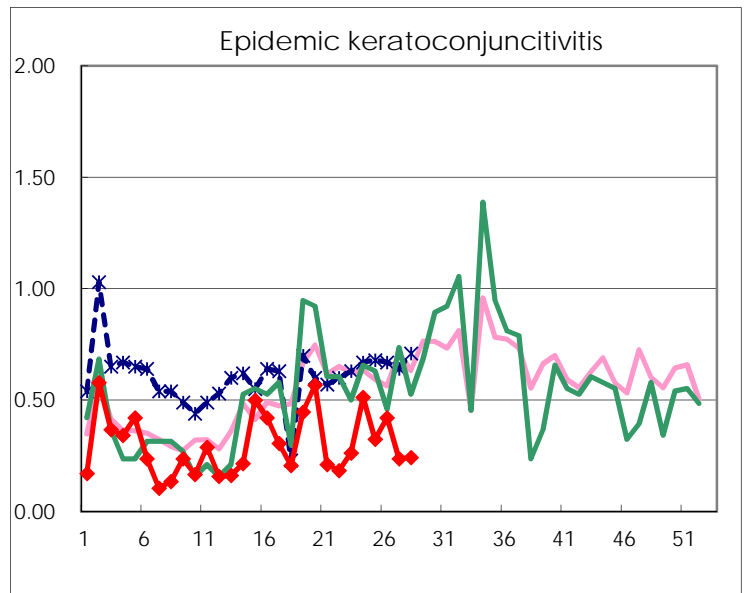
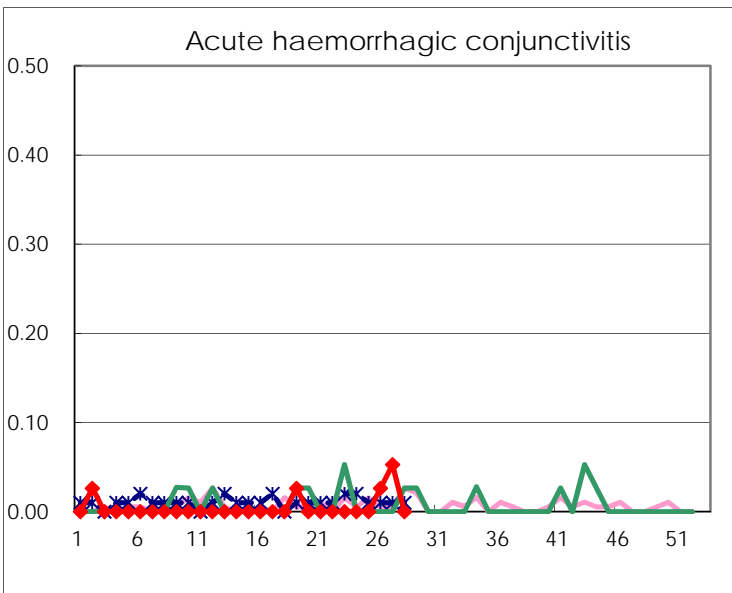
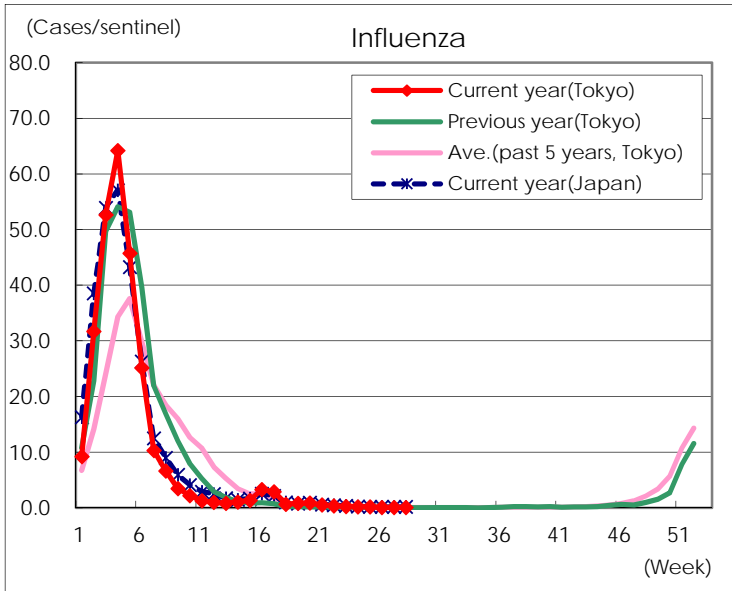
Diseases	Tokyo				
	25th	26th	27th	28th	/sentinel
Respiratory syncytial virus infection	77	97	122	209	0.80
Pharyngoconjunctival fever	168	149	155	118	0.45
Group A streptococcal pharyngitis	763	669	623	569	2.19
Infectious gastroenteritis	1,661	1,544	1,536	1,362	5.24
Chickenpox	142	185	126	137	0.53
Hand, foot, and mouth disease	708	1,325	2,528	3,859	14.84
Erythema infectiosum	90	100	108	83	0.32
Exanthem subitum	152	135	145	105	0.40
Herpangina	224	357	719	1,179	4.53
Mumps	22	40	43	33	0.13
Kawasaki disease	3	4	1	1	
Cold with exanthems	20	29	21	21	0.08
Influenza	67	31	24	36	0.09
Acute hemorrhagic conjunctivitis		1	2		
Epidemic keratoconjunctivitis	12	16	9	9	0.24
Bacterial meningitis	2		1	1	0.04
Aseptic meningitis	1	1	1	1	0.04
<i>Mycoplasma pneumoniae</i>	3	6	9	2	0.08
Chlamydial pneumonia (excluding psittacosis)					
Infectious gastroenteritis (only by Rotavirus)	1	1		1	0.04
Influenza-Associated Hospitalizations				1	0.04

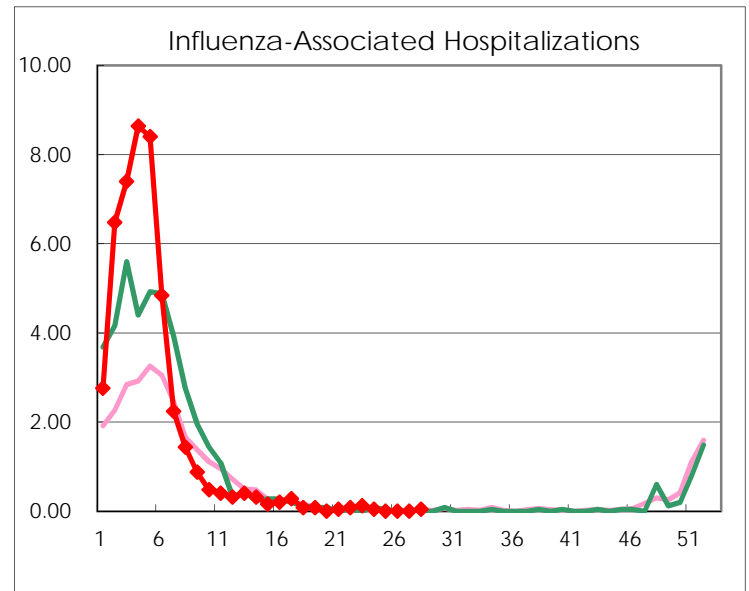
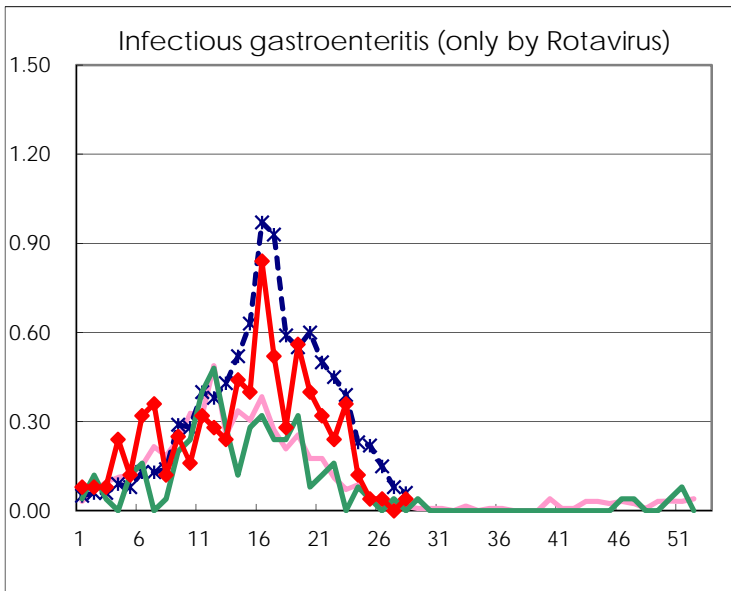
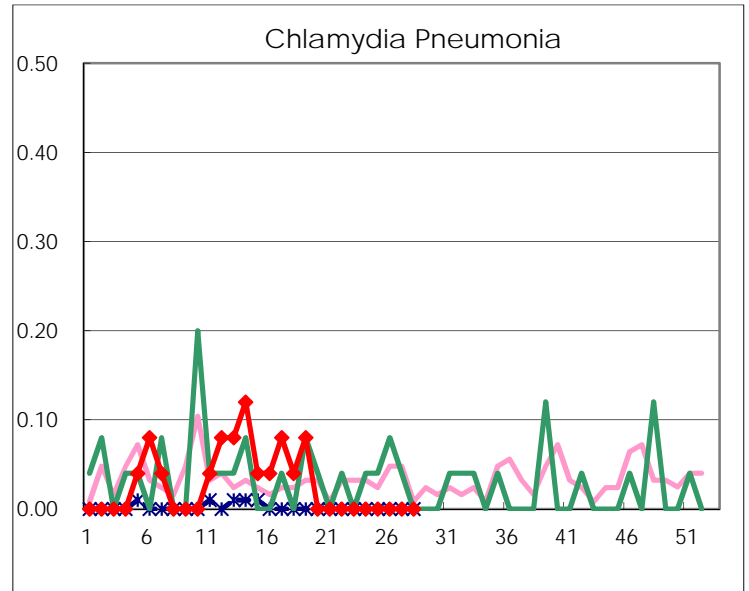
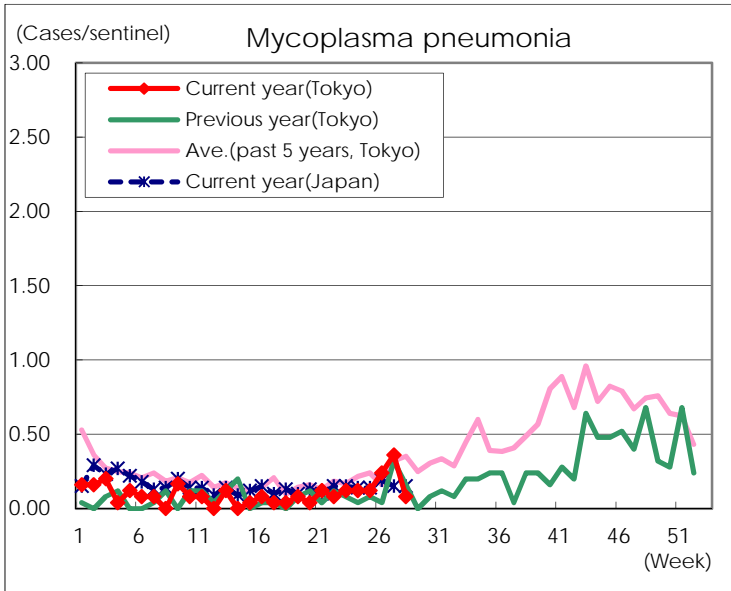
(Blank means 0.)

Disease Trend Graph (weekly reported cases per sentinel in comparison)









Number of sentinel facilities for weekly reporting		
Types of sentinels	Number of sentinels	Sentinels having reported
Pediatric	264	260
Influenza	419	410
Ophthalmic	39	37
Specially-designated	25	25