

25 July 2019 / Number 29

Surveillance System in Tokyo, Japan

The infectious diseases which all physicians must report

All physicians must report to health centers the incidence of the diseases which are shown at page one. Health centers electronically report the individual cases to Tokyo Metropolitan Infectious Disease Surveillance Center.

The infectious diseases required to be reported by the sentinels

The numbers of patients who visit the sentinel clinics or hospitals during a week are reported to health centers in Tokyo. And they electronically report the numbers to Tokyo Metropolitan Infectious Disease Surveillance Center. We have about 500 sentinel clinics and hospitals in Tokyo.

Tokyo Metropolitan Institute of Public Health

TEL:81-3-3363-3213 FAX:81-3-5332-7365

e-mail:www@tokyo-eiken.go.jp

URL:idsc.tokyo-eiken.go.jp/

Number of patients with the diseases which all physicians must report

Category	Diseases	Tokyo					Japan	
		26th	27th	28th	29th	Cum 2019	29th	Cum 2019
I	Ebola hemorrhagic fever							
	Crimean-Congo hemorrhagic fever							
	Smallpox							
	South American hemorrhagic fever							
	Plague							
	Marburg disease							
	Lassa fever							
II	Acute poliomyelitis							
	Tuberculosis	67	81	75	42	1,732	266	11,725
	Diphtheria							
	Severe Acute Respiratory Syndrome(SARS)							
	Middle East Respiratory Syndrome (MERS)							
	Avian influenza H5N1							
	Avian influenza H7N9							
III	Cholera					2		3
	Shigellosis	1		1	1	13	3	54
	Enterohemorrhagic Escherichia coli infection	15	16	18	11	145	145	1,460
	Typhoid fever		1			3		19
	Paratyphoid fever					3		11
IV	Hepatitis E		2	5	5	77	18	302
	West Nile fever							
	Hepatitis A	2	2	4	2	82	4	260
	Echinococcosis							10
	Yellow fever							
	Psittacosis					3		11
	Omsk hemorrhagic fever							
	Relapsing fever							1
	Kyasanur forest disease							
	Q fever							
	Rabies							
	Coccidioidomycosis							1
	Monkeypox							
	Zika virus infection							
	Severe Fever with Thrombocytopenia Syndrome					1	3	56
	Hemorrhagic fever with renal syndrome							
	Western equine encephalitis							
	Tick-borne encephalitis							
	Anthrax							
	Chikungunya fever	1				2	3	10
	Scrub typhus(Tsutsugamushi disease)							81
	Dengue fever	1	3	2		51	3	176
	Eastern equine encephalitis							
	Avian influenza (excluding H5N1 and H7N9)							
	Nipah virus infection							
	Japanese spotted fever						5	94
	Japanese encephalitis							
	Hantavirus pulmonary syndrome							
	Herpes B virus infection							
	Glanders							
	Brucellosis					1		2
	Venezuelan equine encephalitis							
	Hendra virus infection							
	Epidemic typhus							
Botulism							1	
Malaria	1				7	1	25	
Tularemia								
Lyme disease						1	5	
Lyssavirus infection(excluding rabies)								
Rift valley fever								
Melioidosis								
Legionellosis	6	5	7	7	99	60	1,066	
Leptospirosis					1		5	
Rocky mountain spotted fever								

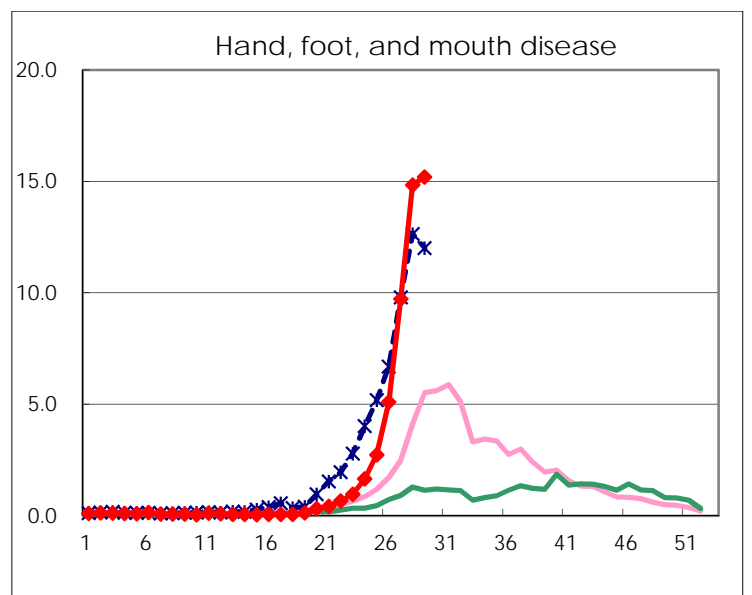
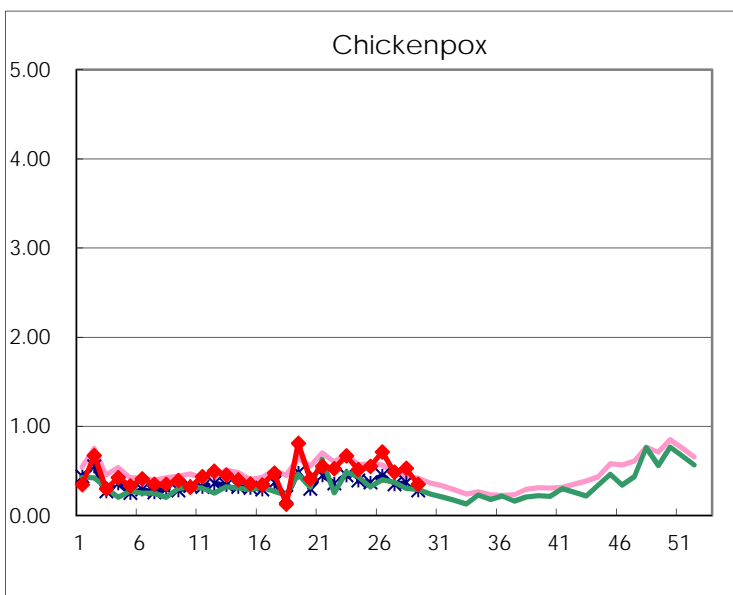
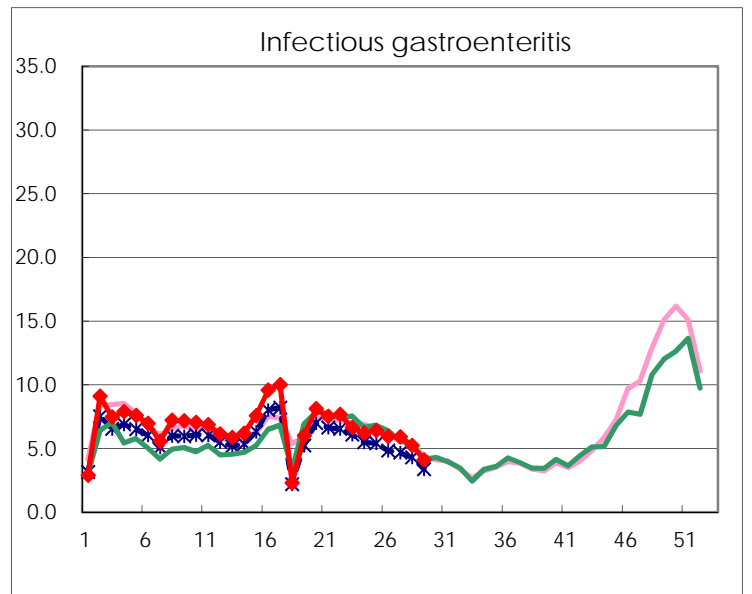
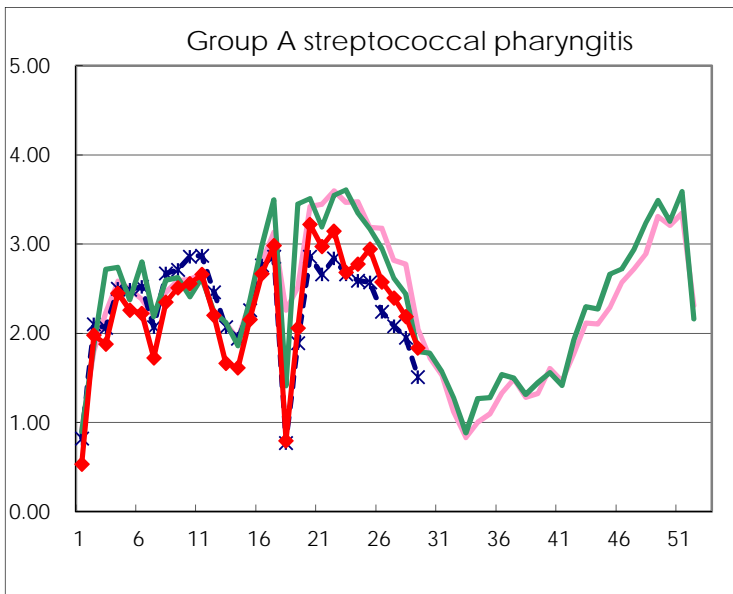
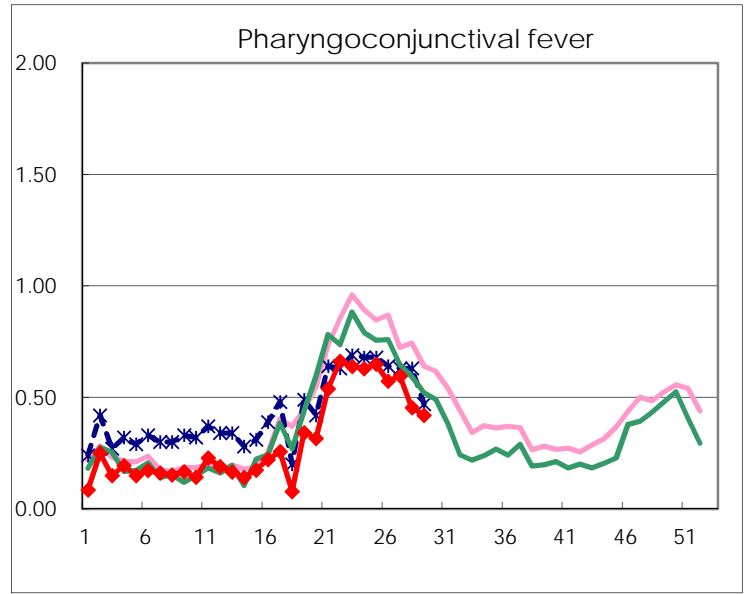
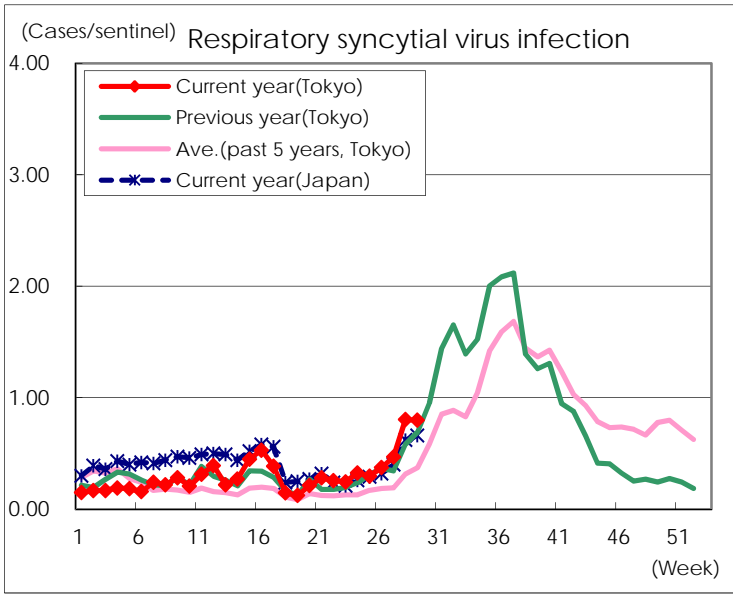
Category	Diseases	Tokyo					Japan	
		26th	27th	28th	29th	Cum 2019	29th	Cum 2019
V	Amebiasis	2	5	2	4	96	7	478
	Viral hepatitis(excluding hepatitis A and E)	1	2	3	2	48	4	178
	CRE infection	4	1	1	3	101	37	1,080
	Acute Flaccid Paralysis (excluding Acute poliomyelitis)					3	4	44
	Acute encephalitis(excluding JE and WNE)	1				48	9	540
	Cryptosporidiosis					2		8
	Creutzfeldt-Jakob disease					12	3	100
	Severe invasive streptococcal infections(TSLs)	5	1	4	4	72	11	530
	Acquired immunodeficiency syndrome (AIDS)	4	6	5	6	211	8	640
	Giardiasis					3		25
	Invasive <i>Haemophilus influenzae</i> disease	1	1	3	1	53	5	338
	Invasive meningococcal disease				1	2	2	27
	Invasive pneumococcal disease	8	3	4	3	245	23	2,125
	Varicella (limited to hospitalized case)	3		3	1	40	6	271
	Congenital rubella syndrome					1		3
	Syphilis	39	36	38	21	973	53	3,651
	Disseminated cryptococcosis		1		1	9	2	83
	Tetanus					4	2	67
	Vancomycin-resistant <i>S. aureus</i> infection							
	Vancomycin-resistant <i>Enterococcus</i> infection			1		5	1	45
	Pertussis	23	29	35	10	851	272	9,381
Rubella	18	18	20	15	742	22	2,004	
Measles	1				101	2	662	
MDRA infection					2		17	

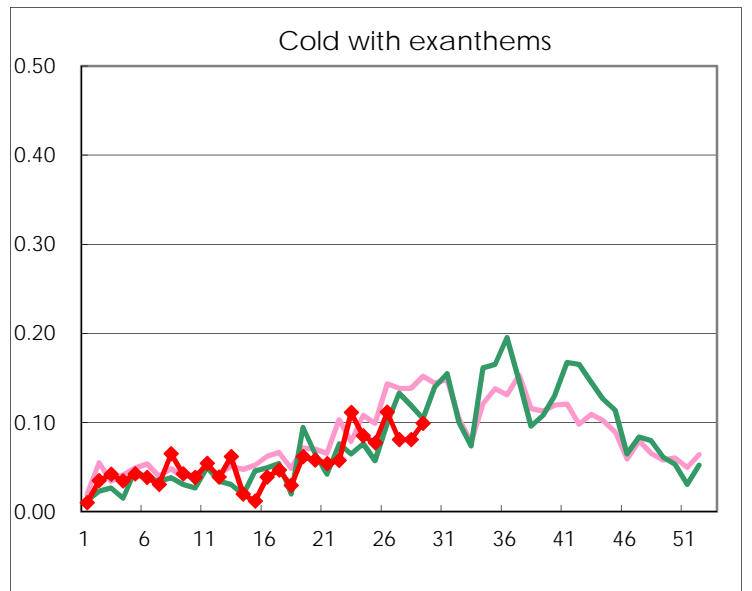
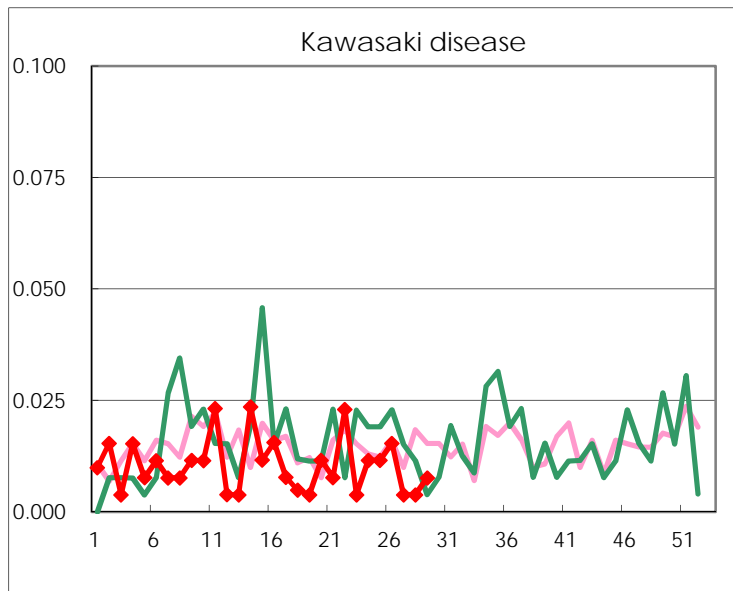
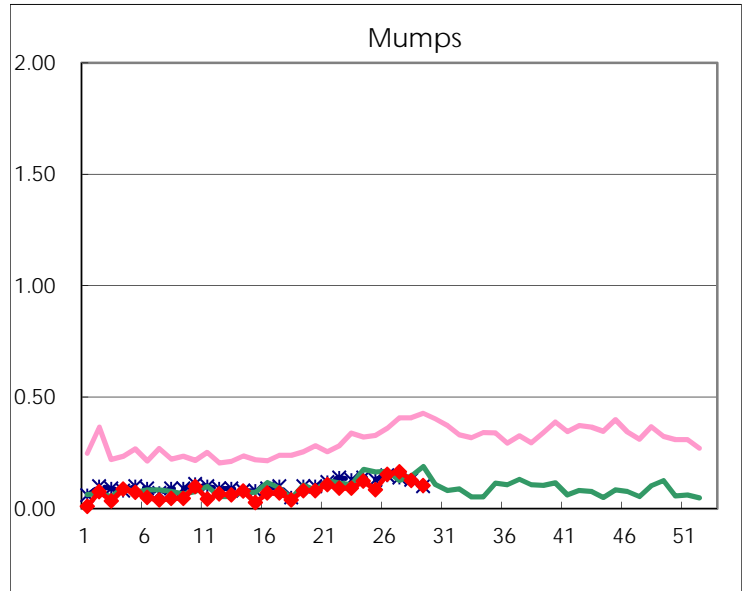
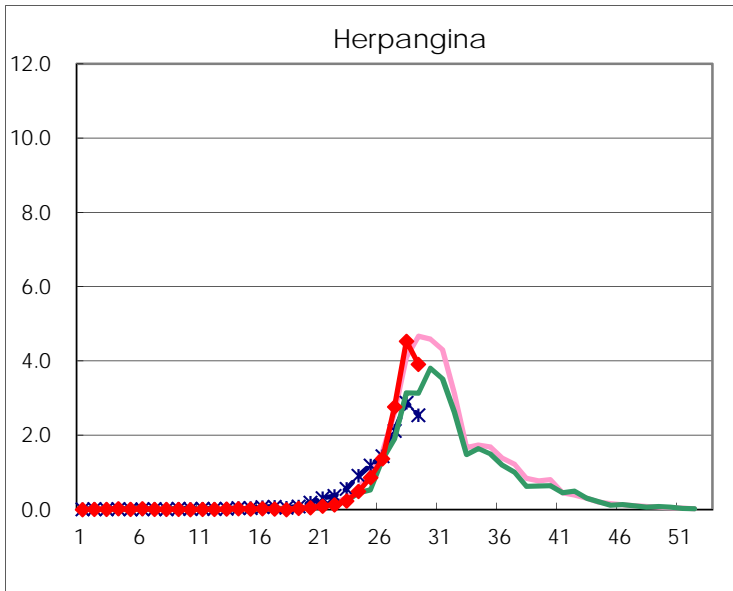
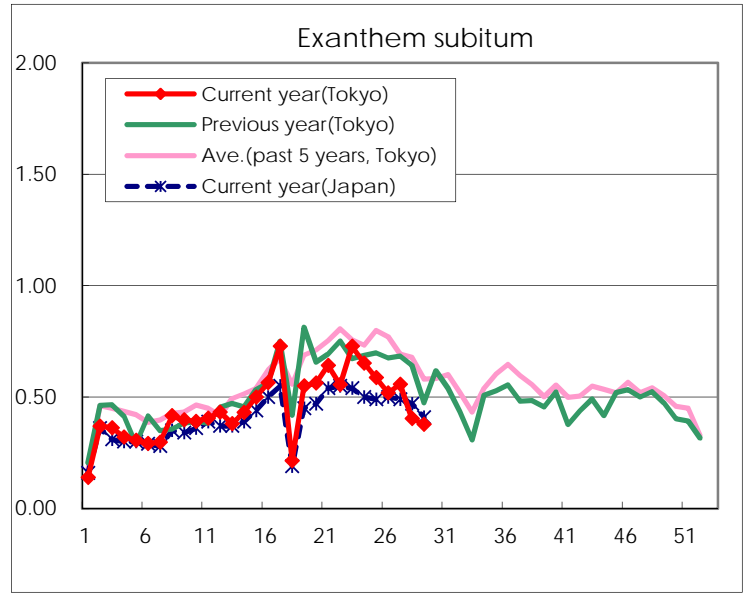
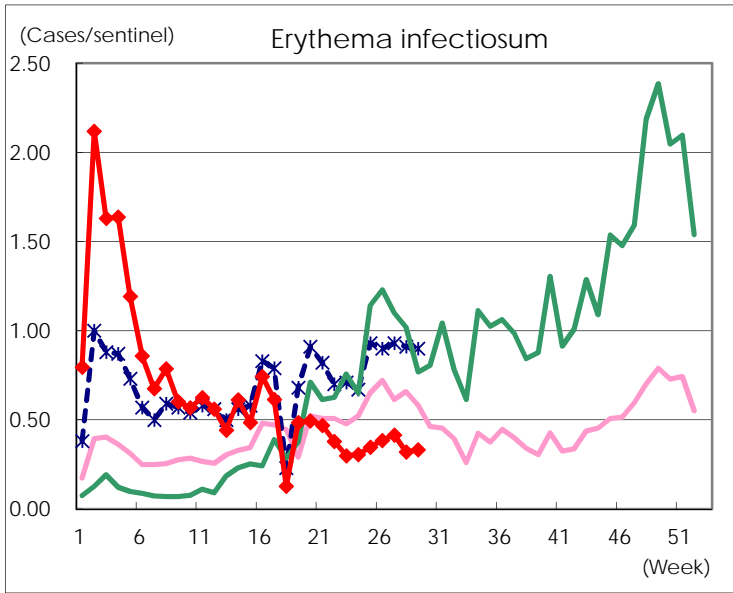
Number of patients with the diseases to be reported
by the designated clinics and hospitals

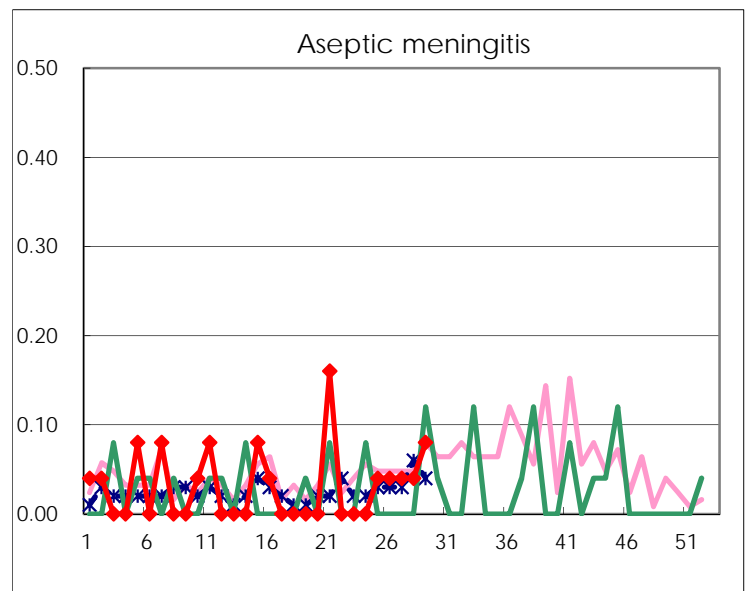
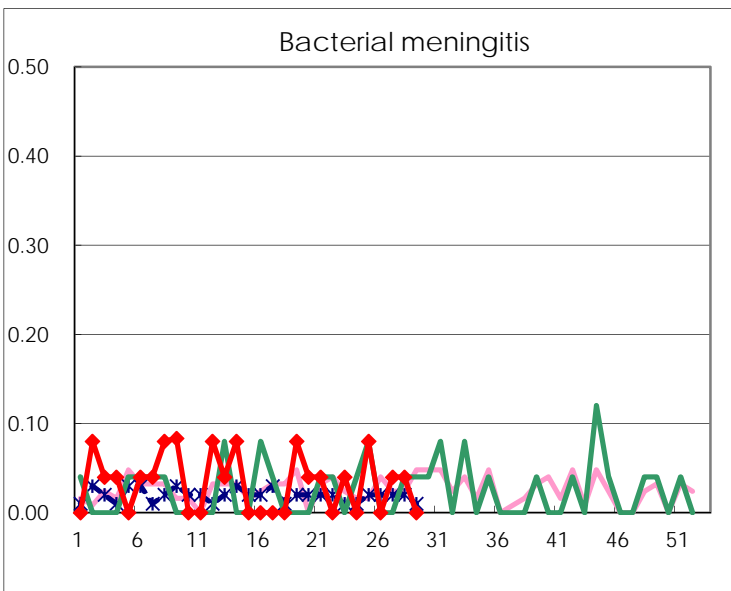
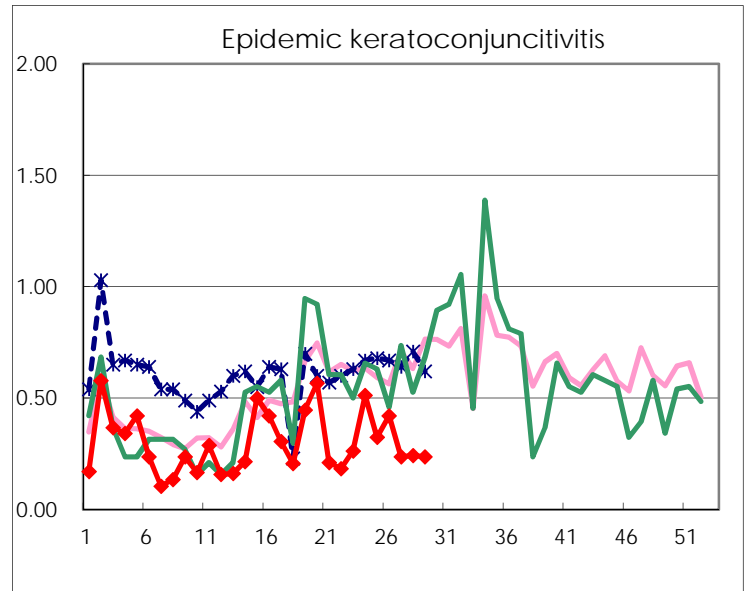
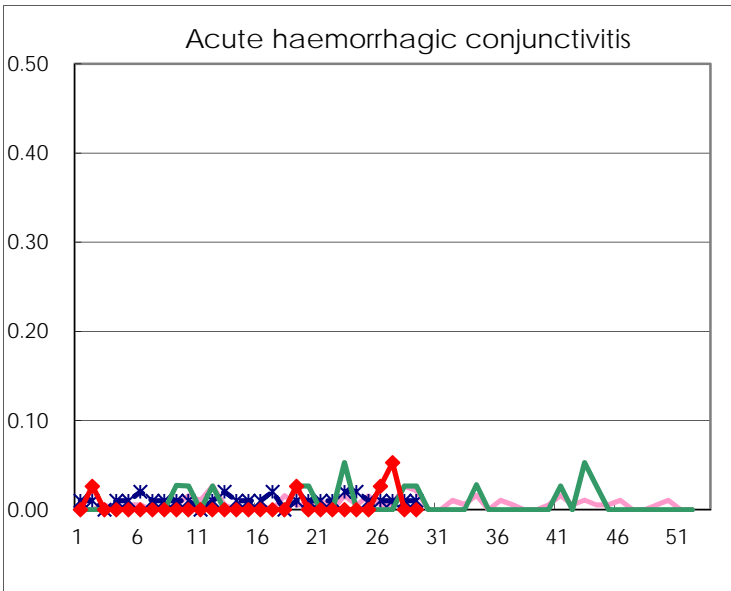
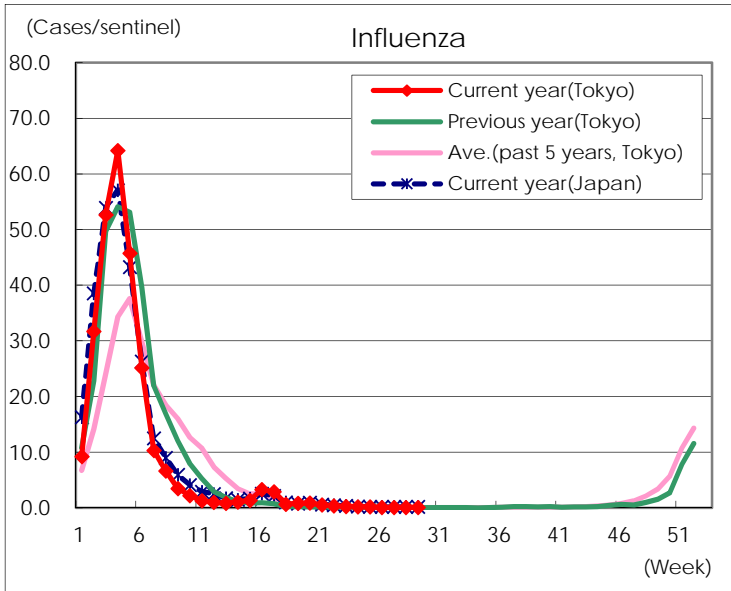
Diseases	Tokyo				
	26th	27th	28th	29th	/sentinel
Respiratory syncytial virus infection	97	122	209	209	0.80
Pharyngoconjunctival fever	149	155	118	110	0.42
Group A streptococcal pharyngitis	669	623	569	481	1.84
Infectious gastroenteritis	1,544	1,536	1,362	1,074	4.10
Chickenpox	185	126	137	91	0.35
Hand, foot, and mouth disease	1,325	2,528	3,859	3,982	15.20
Erythema infectiosum	100	108	83	87	0.33
Exanthem subitum	135	145	105	99	0.38
Herpangina	357	719	1,179	1,025	3.91
Mumps	40	43	33	27	0.10
Kawasaki disease	4	1	1	2	0.01
Cold with exanthems	29	21	21	26	0.10
Influenza	31	24	36	36	0.09
Acute hemorrhagic conjunctivitis	1	2			
Epidemic keratoconjunctivitis	16	9	9	9	0.24
Bacterial meningitis		1	1		
Aseptic meningitis	1	1	1	2	0.08
<i>Mycoplasma pneumoniae</i>	6	9	2	4	0.16
Chlamydial pneumonia (excluding psittacosis)				1	0.04
Infectious gastroenteritis (only by Rotavirus)	1		1	1	0.04
Influenza-Associated Hospitalizations			1	1	0.04

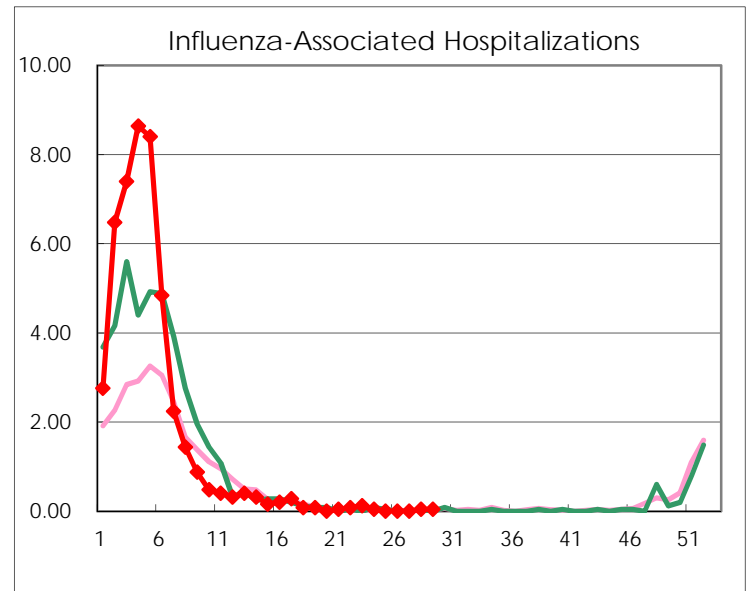
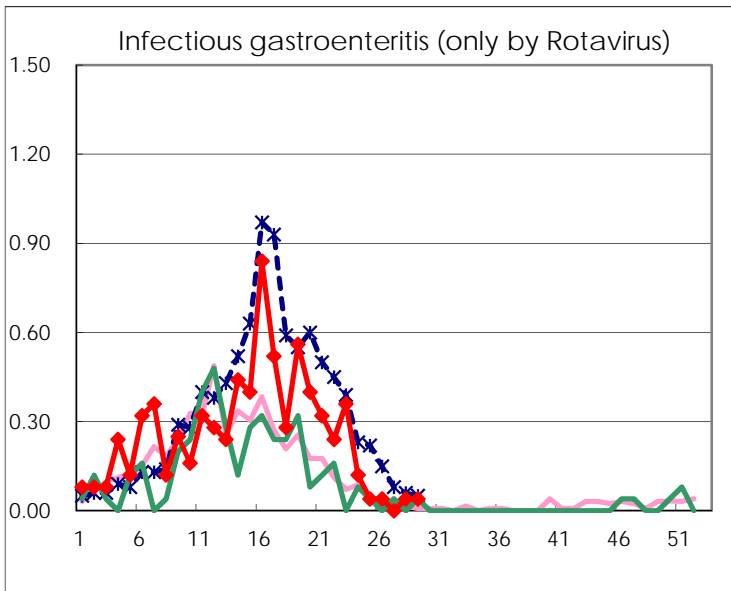
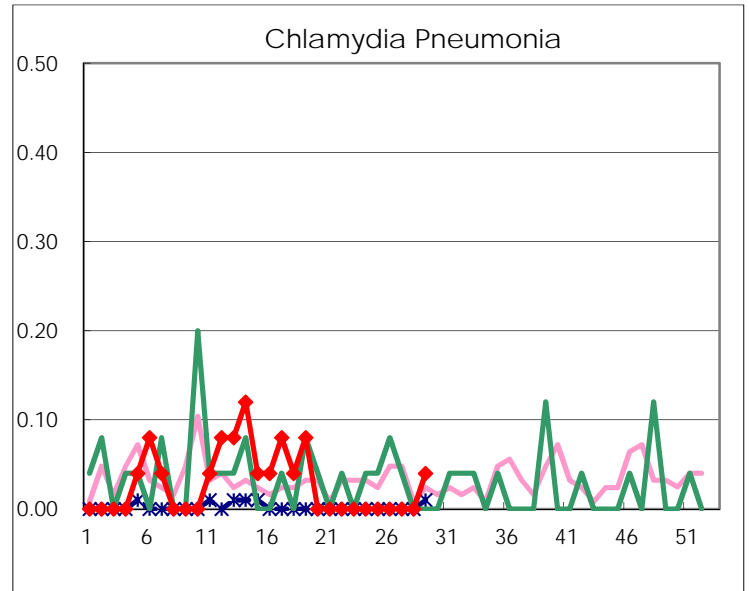
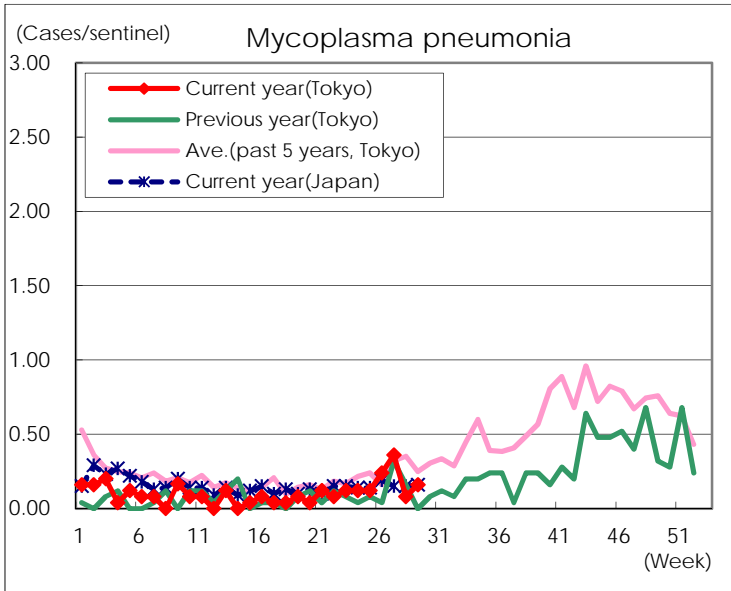
(Blank means 0.)

Disease Trend Graph (weekly reported cases per sentinel in comparison)









Number of sentinel facilities for weekly reporting		
Types of sentinels	Number of sentinels	Sentinels having reported
Pediatric	264	262
Influenza	419	411
Ophthalmic	39	38
Specially-designated	25	25