

## 8 August 2019 / Number 31

### Surveillance System in Tokyo, Japan

The infectious diseases which all physicians must report

All physicians must report to health centers the incidence of the diseases which are shown at page one. Health centers electronically report the individual cases to Tokyo Metropolitan Infectious Disease Surveillance Center.

The infectious diseases required to be reported by the sentinels

The numbers of patients who visit the sentinel clinics or hospitals during a week are reported to health centers in Tokyo. And they electronically report the numbers to Tokyo Metropolitan Infectious Disease Surveillance Center. We have about 500 sentinel clinics and hospitals in Tokyo.

Tokyo Metropolitan Institute of Public Health

TEL:81-3-3363-3213 FAX:81-3-5332-7365

e-mail:[www@tokyo-eiken.go.jp](mailto:www@tokyo-eiken.go.jp)

URL:[idsc.tokyo-eiken.go.jp/](http://idsc.tokyo-eiken.go.jp/)

---

Number of patients with the diseases which all physicians must report

Category	Diseases	Tokyo					Japan	
		28th	29th	30th	31st	Cum 2019	31st	Cum 2019
I	Ebola hemorrhagic fever							
	Crimean-Congo hemorrhagic fever							
	Smallpox							
	South American hemorrhagic fever							
	Plague							
	Marburg disease							
	Lassa fever							
II	Acute poliomyelitis							
	Tuberculosis	82	45	69	71	1,886	361	12,660
	Diphtheria							
	Severe Acute Respiratory Syndrome(SARS)							
	Middle East Respiratory Syndrome (MERS)							
	Avian influenza H5N1							
III	Avian influenza H7N9							
	Cholera					2		3
	Shigellosis	1	1			13		54
	Enterohemorrhagic Escherichia coli infection	18	13	7	9	163	107	1,744
	Typhoid fever					3	1	20
IV	Paratyphoid fever					3		11
	Hepatitis E	5	5			77	6	312
	West Nile fever							
	Hepatitis A	4	2	2	8	92	11	282
	Echinococcosis						1	12
	Yellow fever							
	Psittacosis					3		11
	Omsk hemorrhagic fever							
	Relapsing fever							1
	Kyasanur forest disease							
	Q fever							
	Rabies							
	Coccidioidomycosis						1	2
	Monkeypox							
	Zika virus infection							
	Severe Fever with Thrombocytopenia Syndrome					1	1	61
	Hemorrhagic fever with renal syndrome							
	Western equine encephalitis							
	Tick-borne encephalitis							
	Anthrax							
	Chikungunya fever					2	2	15
	Scrub typhus(Tsutsugamushi disease)							81
	Dengue fever	2		1	3	55	8	192
	Eastern equine encephalitis							
	Avian influenza (excluding H5N1 and H7N9)							
	Nipah virus infection							
	Japanese spotted fever						10	116
	Japanese encephalitis							
	Hantavirus pulmonary syndrome							
	Herpes B virus infection							
	Glanders							
	Brucellosis					1		2
	Venezuelan equine encephalitis							
Hendra virus infection								
Epidemic typhus								
Botulism							1	
Malaria			1		8		26	
Tularemia								
Lyme disease							7	
Lyssavirus infection(excluding rabies)								
Rift valley fever								
Melioidosis								
Legionellosis	7	8	4	6	110	97	1,265	
Leptospirosis					1		6	
Rocky mountain spotted fever								

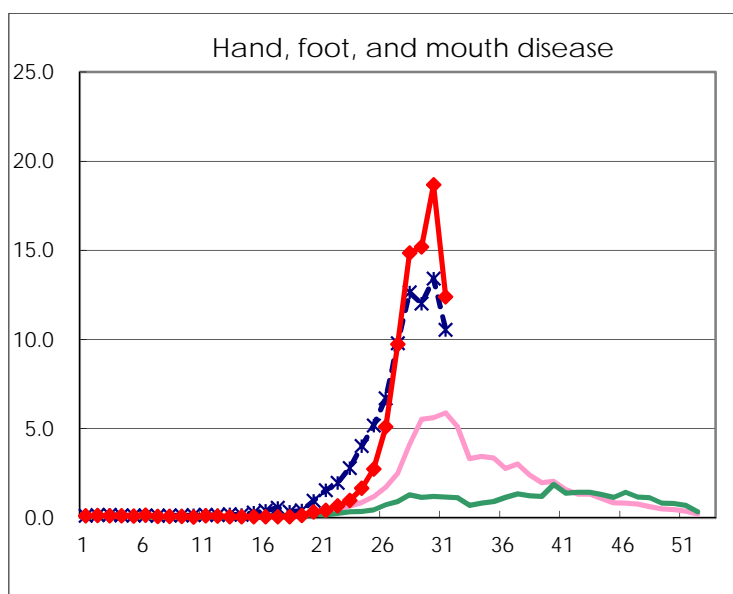
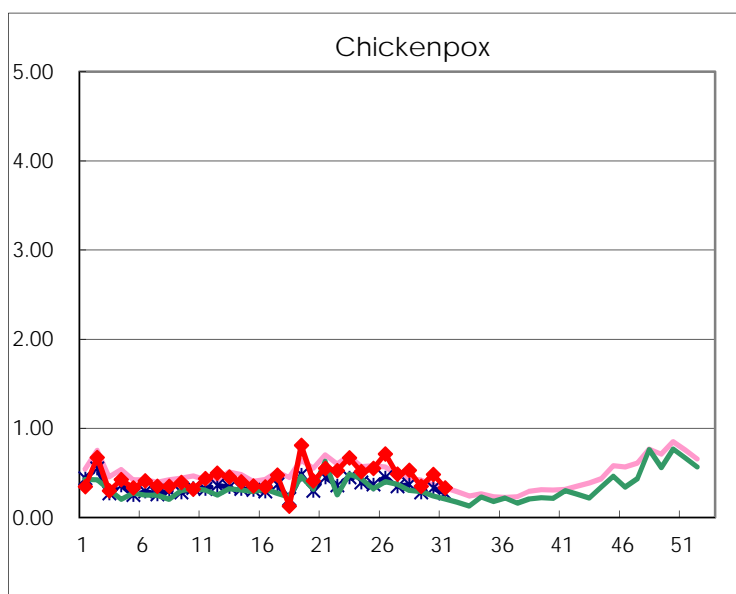
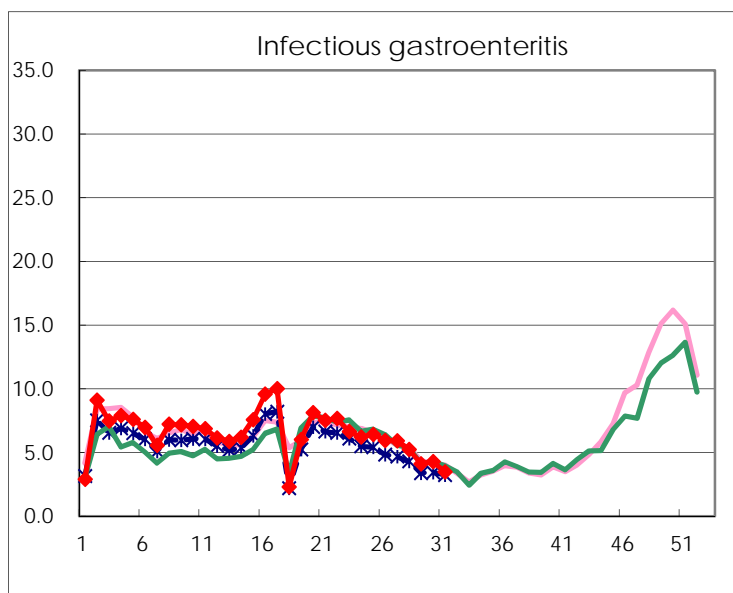
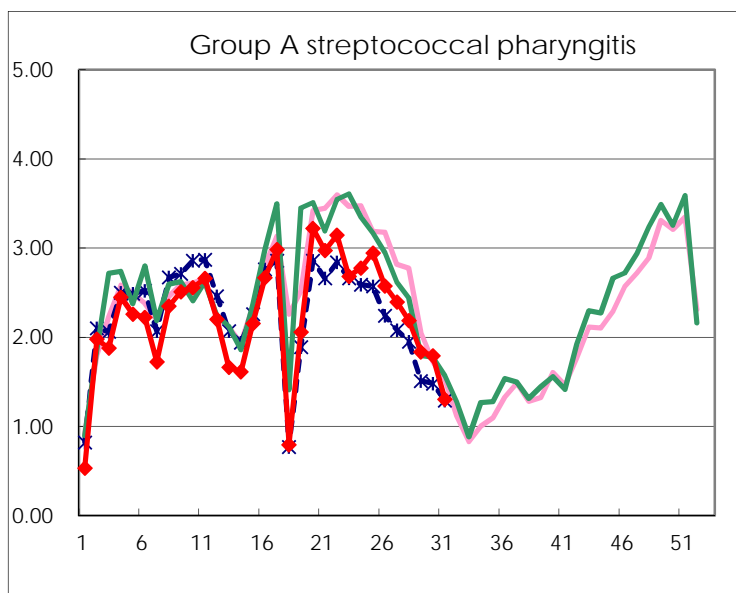
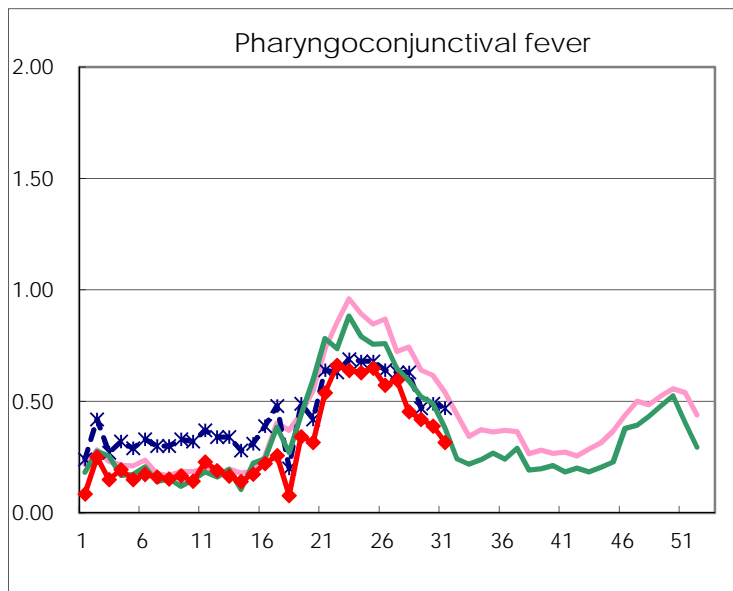
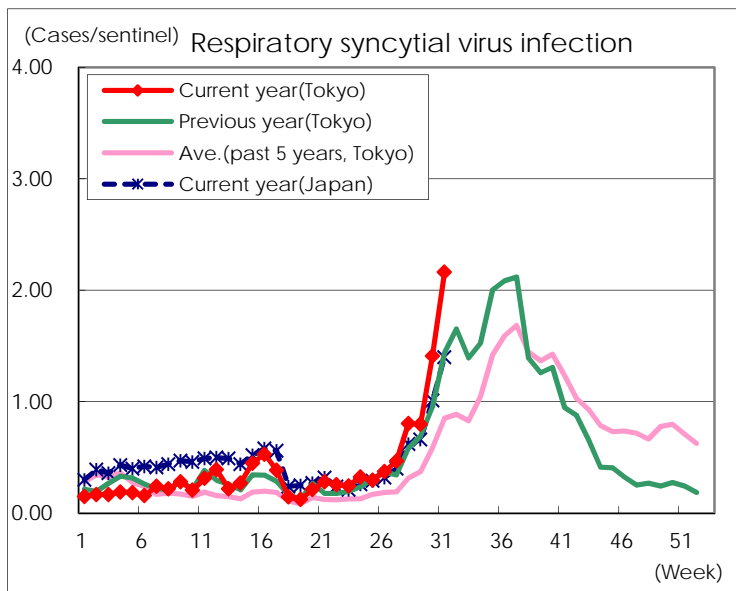
Category	Diseases	Tokyo					Japan	
		28th	29th	30th	31st	Cum 2019	31st	Cum 2019
V	Amebiasis	2	4	5	2	103	10	516
	Viral hepatitis(excluding hepatitis A and E)	3	2	5	3	56		197
	CRE infection	1	3	2	7	110	29	1,189
	Acute Flaccid Paralysis (excluding Acute poliomyelitis)					3	1	49
	Acute encephalitis(excluding JE and WNE)			1	2	51	6	565
	Cryptosporidiosis					2		8
	Creutzfeldt-Jakob disease					12	2	107
	Severe invasive streptococcal infections(TSLs)	4	4	5	3	80	12	569
	Acquired immunodeficiency syndrome (AIDS)	5	6	10	9	230	19	698
	Giardiasis					3	1	27
	Invasive <i>Haemophilus influenzae</i> disease	3	1	3	1	57	6	358
	Invasive meningococcal disease		1			2	1	28
	Invasive pneumococcal disease	5	3	3	2	251	16	2,194
	Varicella (limited to hospitalized case)	3	1		1	41	6	294
	Congenital rubella syndrome					1		3
	Syphilis	38	21	36	24	1,033	62	3,894
	Disseminated cryptococcosis		1			9	1	91
	Tetanus					4	1	73
	Vancomycin-resistant <i>S. aureus</i> infection							
	Vancomycin-resistant <i>Enterococcus</i> infection	1				5		46
	Pertussis	35	10	32	25	908	231	10,110
Rubella	21	15	19	10	772	19	2,061	
Measles				2	103	4	671	
MDRA infection					2		18	

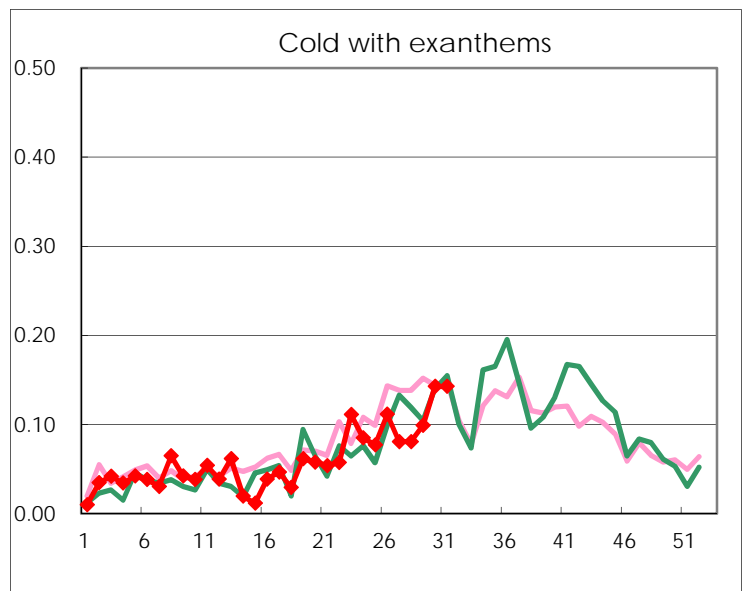
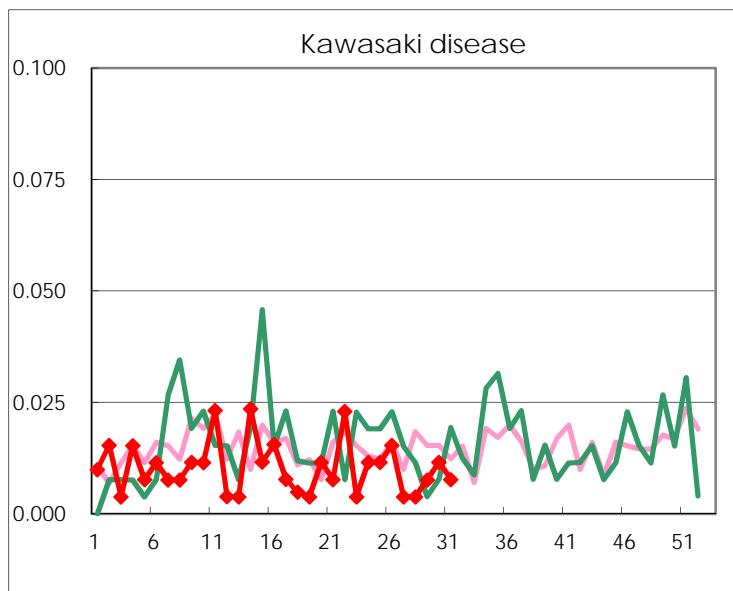
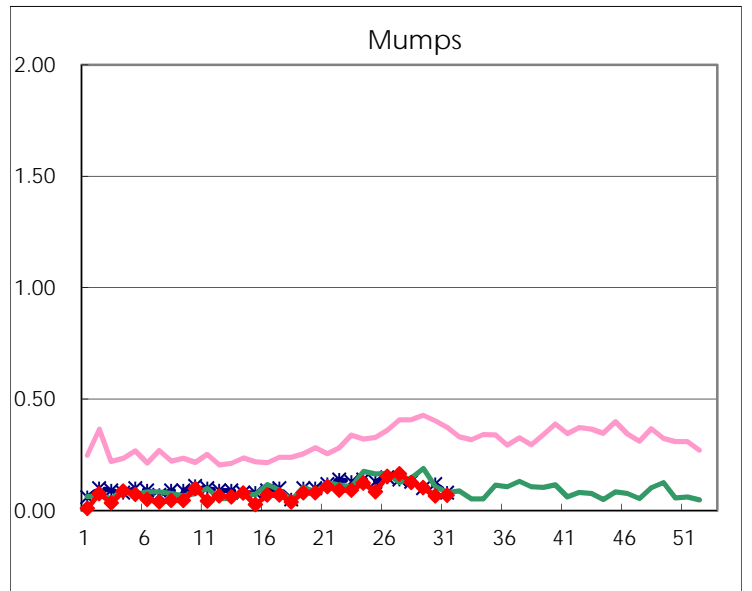
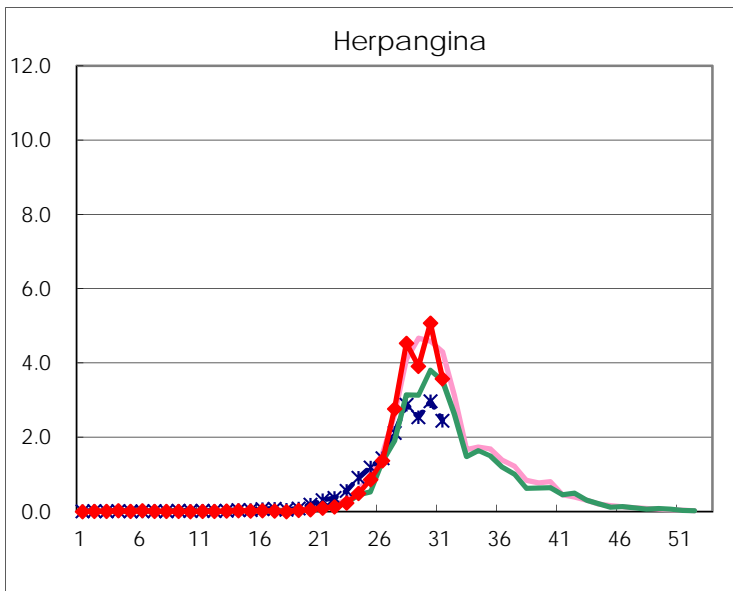
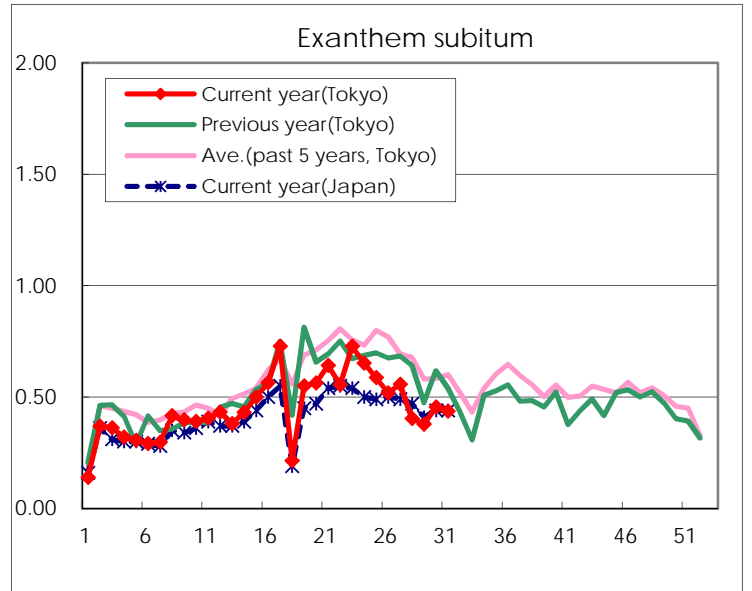
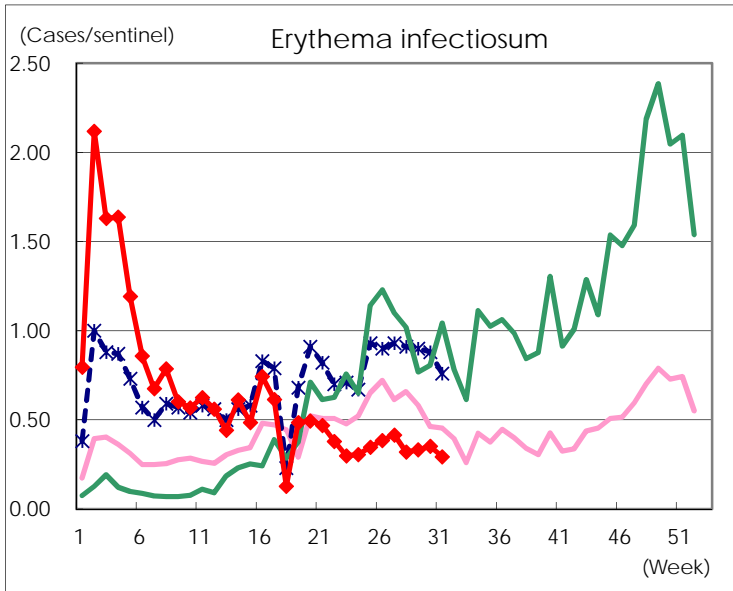
Number of patients with the diseases to be reported  
by the designated clinics and hospitals

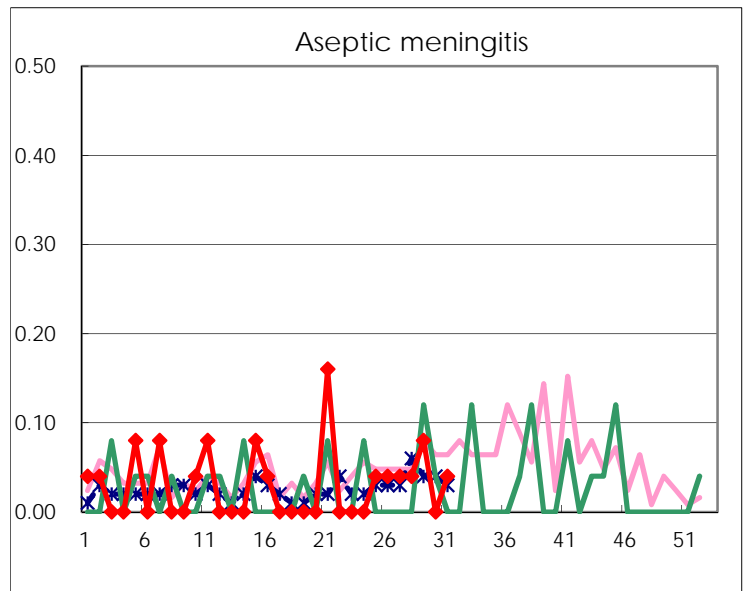
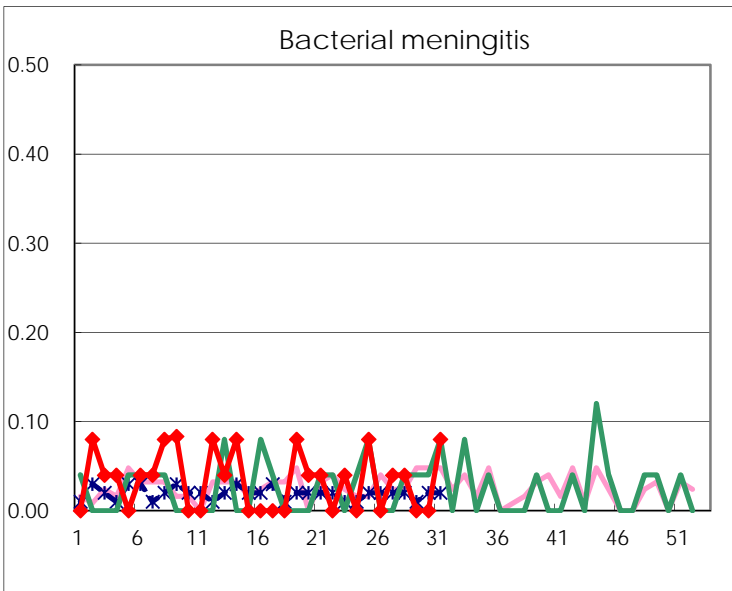
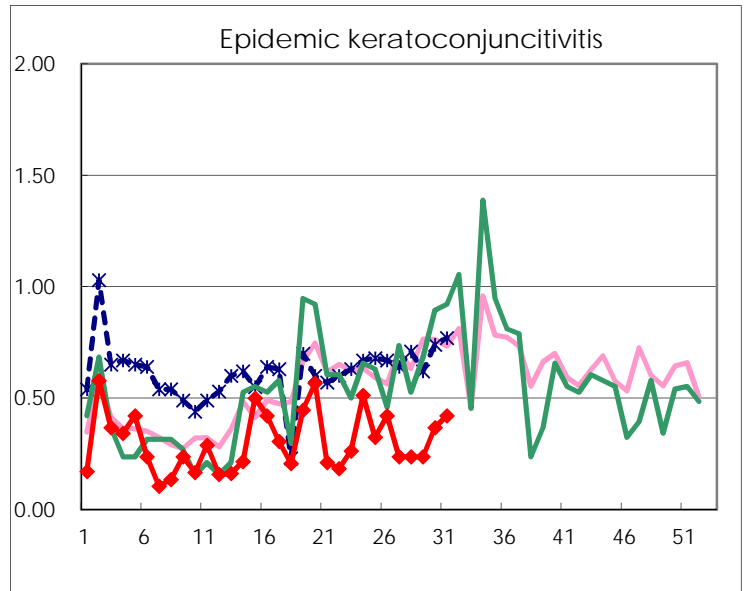
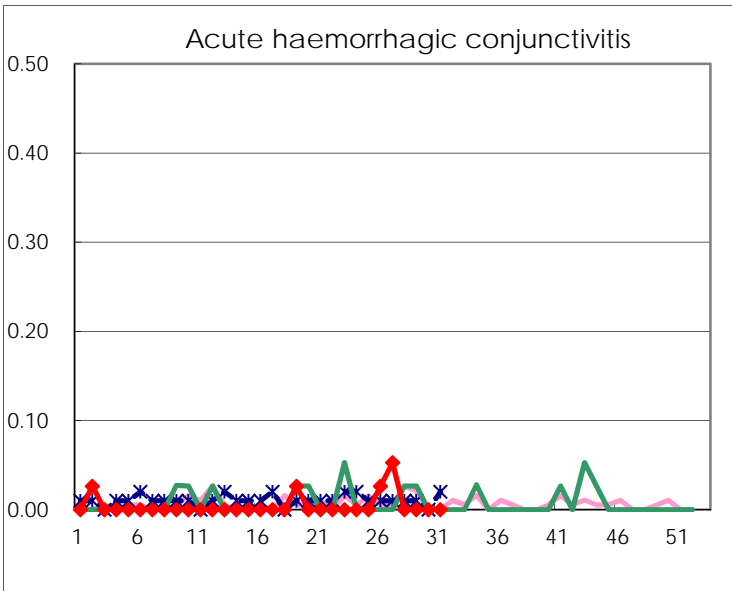
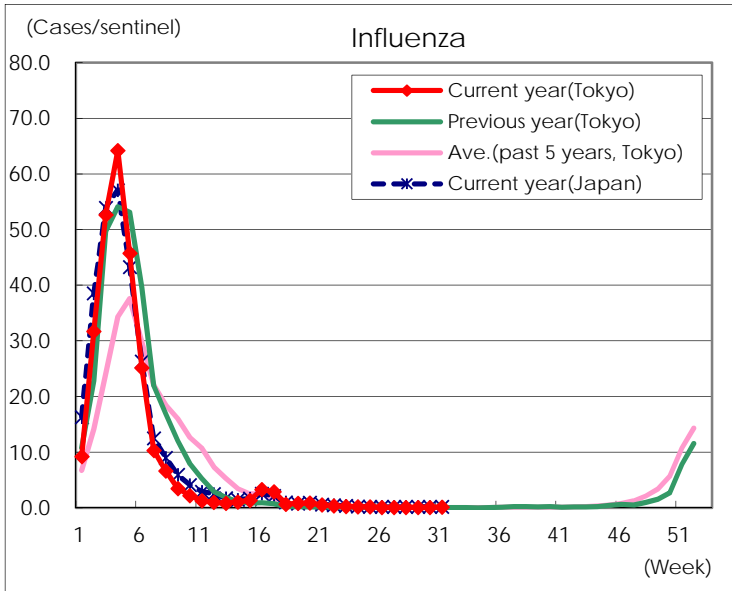
Diseases	Tokyo				
	28th	29th	30th	31st	/sentinel
Respiratory syncytial virus infection	209	209	365	560	2.16
Pharyngoconjunctival fever	118	110	101	82	0.32
Group A streptococcal pharyngitis	569	481	464	338	1.31
Infectious gastroenteritis	1,362	1,074	1,107	900	3.47
Chickenpox	137	91	125	86	0.33
Hand, foot, and mouth disease	3,859	3,982	4,834	3,209	12.39
Erythema infectiosum	83	87	91	76	0.29
Exanthem subitum	105	99	118	113	0.44
Herpangina	1,179	1,025	1,314	927	3.58
Mumps	33	27	17	18	0.07
Kawasaki disease	1	2	3	2	0.01
Cold with exanthems	21	26	37	37	0.14
Influenza	36	36	36	55	0.13
Acute hemorrhagic conjunctivitis					
Epidemic keratoconjunctivitis	9	9	14	16	0.42
Bacterial meningitis	1			2	0.08
Aseptic meningitis	1	2		1	0.04
<i>Mycoplasma pneumoniae</i>	2	4	5	5	0.20
Chlamydial pneumonia (excluding psittacosis)		1		2	0.08
Infectious gastroenteritis (only by Rotavirus)	1	1			
Influenza-Associated Hospitalizations	1	1		3	0.12

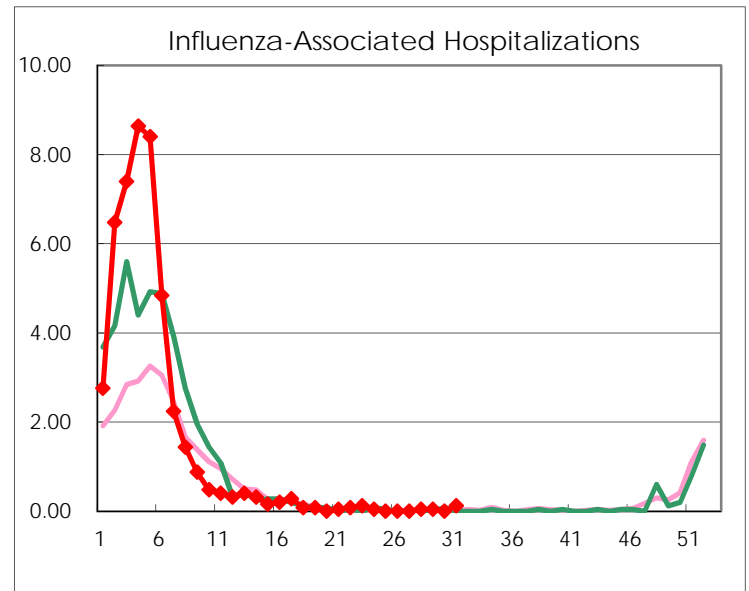
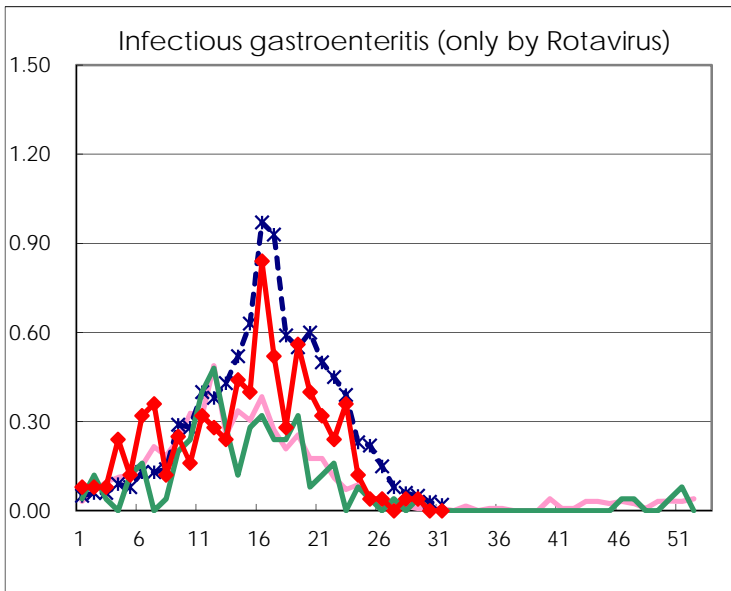
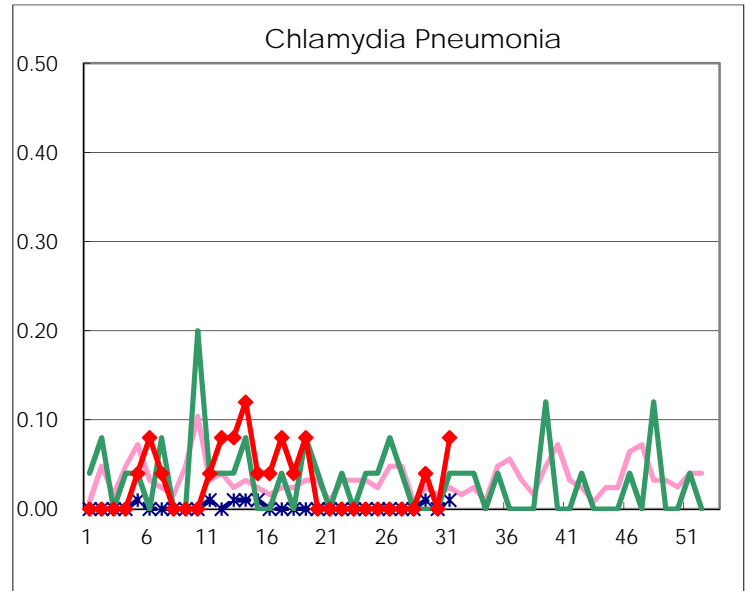
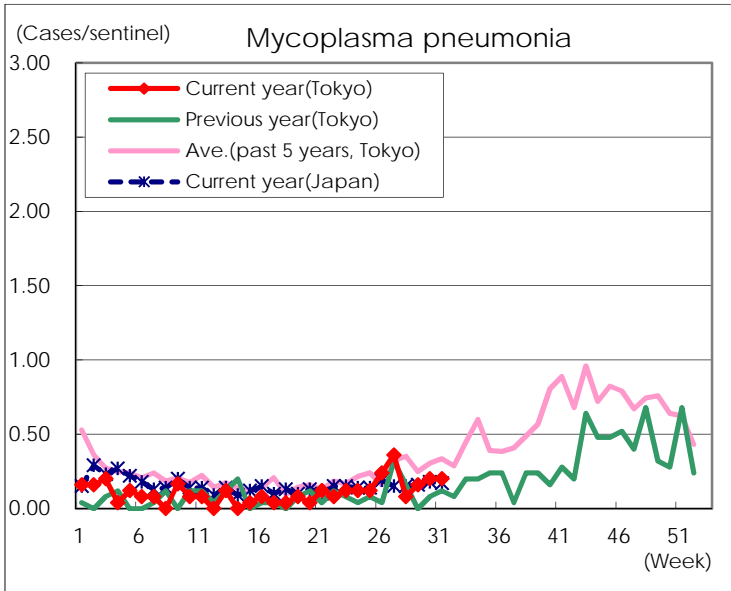
( Blank means 0. )

# Disease Trend Graph (weekly reported cases per sentinel in comparison)









Number of sentinel facilities for weekly reporting		
Types of sentinels	Number of sentinels	Sentinels having reported
Pediatric	264	259
Influenza	419	408
Ophthalmic	39	38
Specially-designated	25	25