

15 August 2019 / Number 32

Surveillance System in Tokyo, Japan

The infectious diseases which all physicians must report

All physicians must report to health centers the incidence of the diseases which are shown at page one. Health centers electronically report the individual cases to Tokyo Metropolitan Infectious Disease Surveillance Center.

The infectious diseases required to be reported by the sentinels

The numbers of patients who visit the sentinel clinics or hospitals during a week are reported to health centers in Tokyo. And they electronically report the numbers to Tokyo Metropolitan Infectious Disease Surveillance Center. We have about 500 sentinel clinics and hospitals in Tokyo.

Tokyo Metropolitan Institute of Public Health

TEL:81-3-3363-3213 FAX:81-3-5332-7365

e-mail:www@tokyo-eiken.go.jp

URL:idsc.tokyo-eiken.go.jp/

Number of patients with the diseases which all physicians must report

Category	Diseases	Tokyo					Japan	
		29th	30th	31st	32nd	Cum 2019	32nd	Cum 2019
I	Ebola hemorrhagic fever							
	Crimean-Congo hemorrhagic fever							
	Smallpox							
	South American hemorrhagic fever							
	Plague							
	Marburg disease							
	Lassa fever							
II	Acute poliomyelitis							
	Tuberculosis	45	69	74	51	1,942	321	13,095
	Diphtheria							
	Severe Acute Respiratory Syndrome(SARS)							
	Middle East Respiratory Syndrome (MERS)							
	Avian influenza H5N1							
	Avian influenza H7N9							
III	Cholera					2		3
	Shigellosis	1				13		54
	Enterohemorrhagic Escherichia coli infection	13	7	9	16	179	117	1,875
	Typhoid fever					3	1	21
	Paratyphoid fever					3		11
IV	Hepatitis E	5			3	80	11	324
	West Nile fever							
	Hepatitis A	2	2	8	5	97	9	292
	Echinococcosis						1	13
	Yellow fever							
	Psittacosis					3		11
	Omsk hemorrhagic fever							
	Relapsing fever							1
	Kyasanur forest disease							
	Q fever							
	Rabies							
	Coccidioidomycosis							2
	Monkeypox							
	Zika virus infection							
	Severe Fever with Thrombocytopenia Syndrome					1	2	63
	Hemorrhagic fever with renal syndrome							
	Western equine encephalitis							
	Tick-borne encephalitis							
	Anthrax							
	Chikungunya fever					2	1	16
	Scrub typhus(Tsutsugamushi disease)							81
	Dengue fever		1	3	5	60	6	200
	Eastern equine encephalitis							
	Avian influenza (excluding H5N1 and H7N9)							
	Nipah virus infection							
	Japanese spotted fever						5	122
	Japanese encephalitis							
	Hantavirus pulmonary syndrome							
	Herpes B virus infection							
	Glanders							
	Brucellosis					1		2
	Venezuelan equine encephalitis							
	Hendra virus infection							
	Epidemic typhus							
Botulism							1	
Malaria		1			8	3	29	
Tularemia								
Lyme disease						1	8	
Lyssavirus infection(excluding rabies)								
Rift valley fever								
Melioidosis								
Legionellosis	8	4	6	1	111	61	1,335	
Leptospirosis					1		6	
Rocky mountain spotted fever								

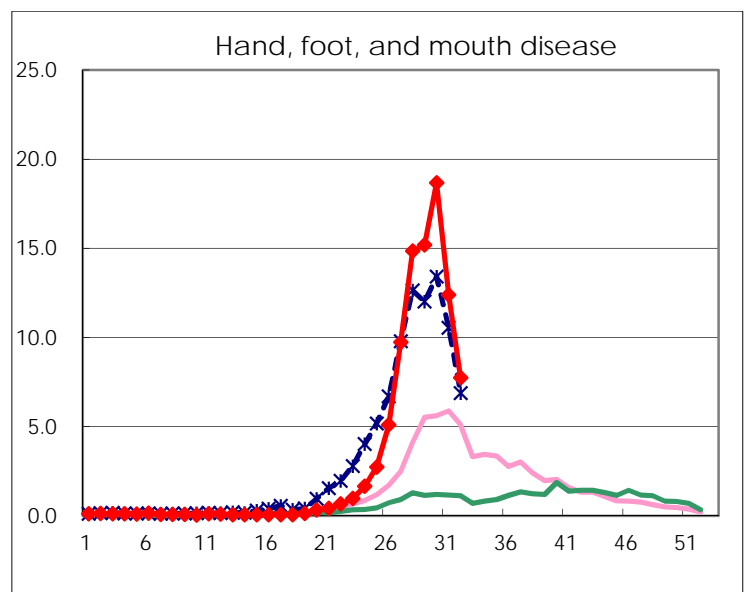
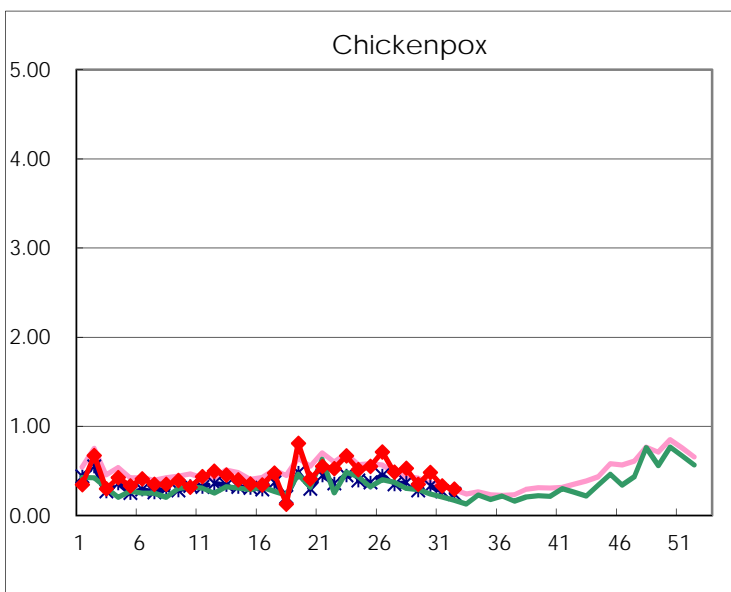
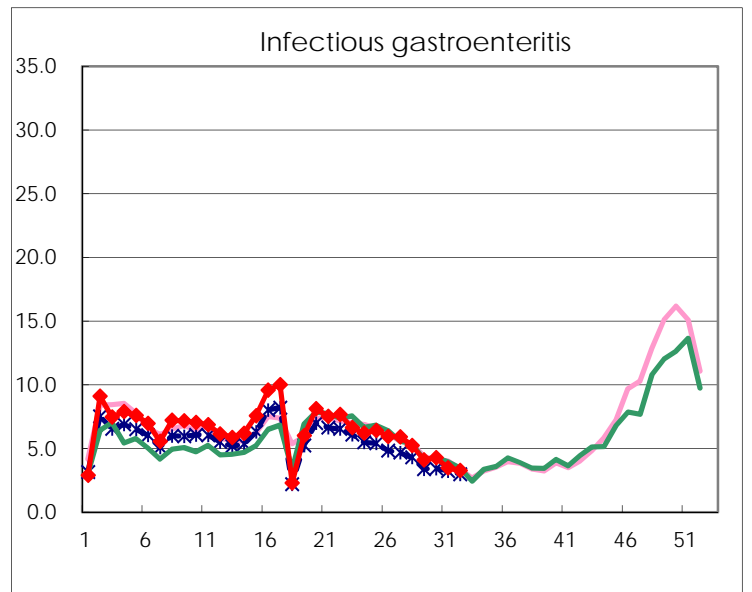
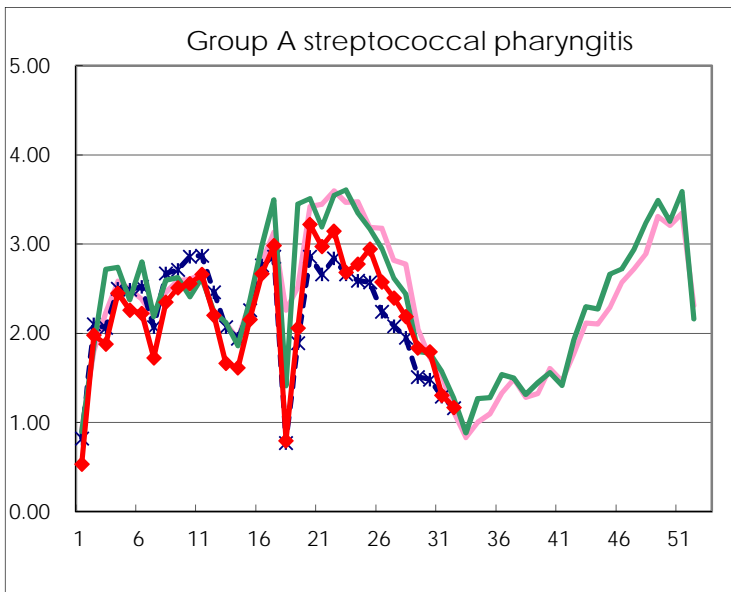
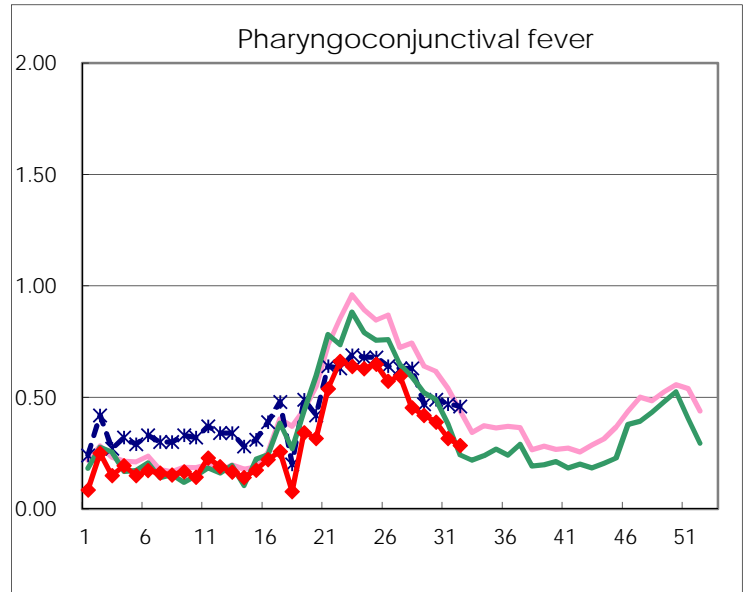
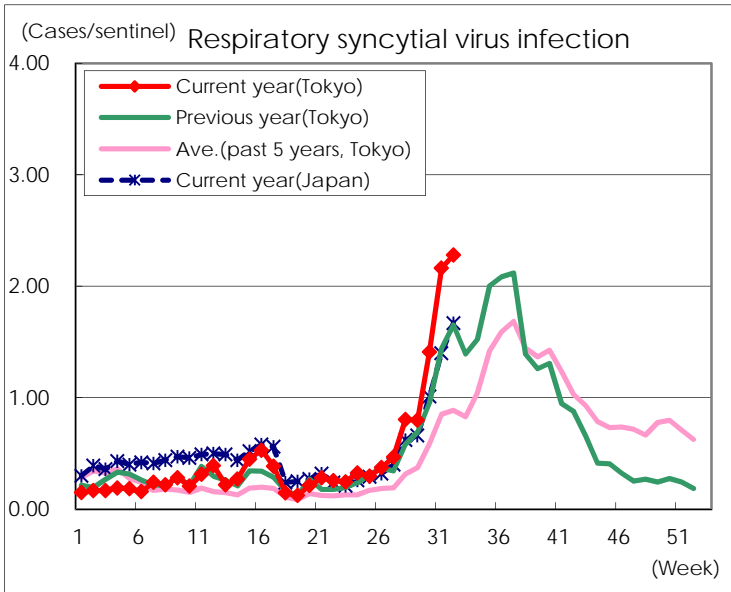
Category	Diseases	Tokyo					Japan	
		29th	30th	31st	32nd	Cum 2019	32nd	Cum 2019
V	Amebiasis	4	5	3	4	108	11	534
	Viral hepatitis(excluding hepatitis A and E)	2	5	3	2	58	3	200
	CRE infection	3	2	8	3	114	33	1,235
	Acute Flaccid Paralysis (excluding Acute poliomyelitis)					3	1	51
	Acute encephalitis(excluding JE and WNE)		1	2	2	53	4	574
	Cryptosporidiosis					2		9
	Creutzfeldt-Jakob disease					12	2	111
	Severe invasive streptococcal infections(TSLs)	4	5	3	2	82	9	580
	Acquired immunodeficiency syndrome (AIDS)	6	10	10	12	243	18	727
	Giardiasis					3	1	28
	Invasive <i>Haemophilus influenzae</i> disease	1	3	1	1	58	5	363
	Invasive meningococcal disease	1				2	1	29
	Invasive pneumococcal disease	3	3	2	2	253	19	2,222
	Varicella (limited to hospitalized case)	1		1	3	44	8	306
	Congenital rubella syndrome					1		3
	Syphilis	21	36	25	29	1,063	69	4,009
	Disseminated cryptococcosis	1				9	2	94
	Tetanus				1	5	3	76
	Vancomycin-resistant <i>S. aureus</i> infection							
	Vancomycin-resistant <i>Enterococcus</i> infection					5	1	47
	Pertussis	10	32	25	24	932	252	10,446
Rubella	15	19	10	8	780	14	2,079	
Measles			2		103	1	672	
MDRA infection					2		18	

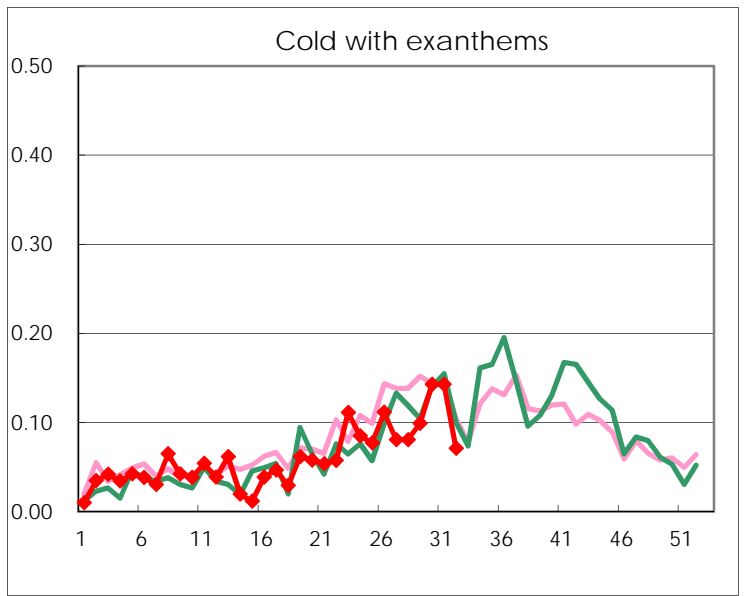
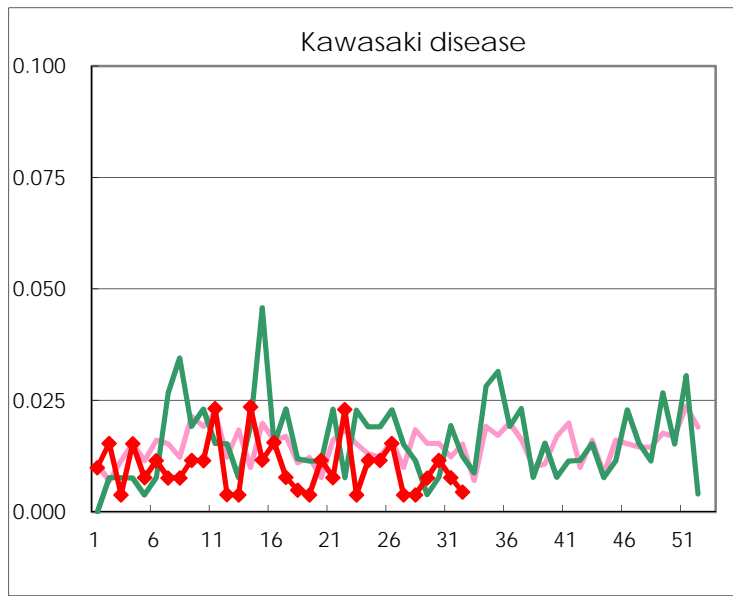
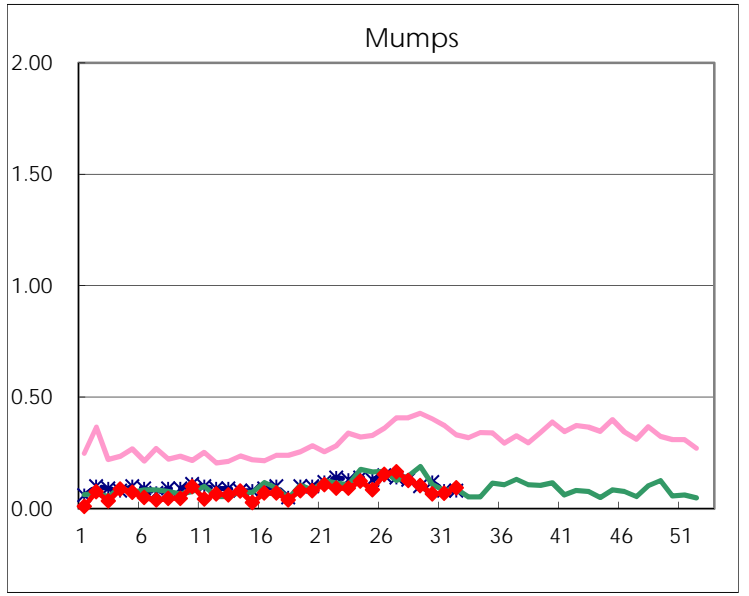
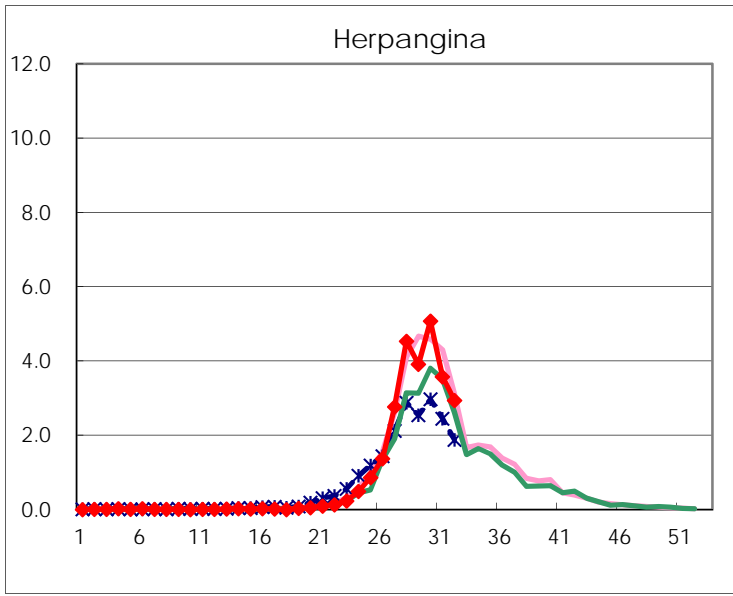
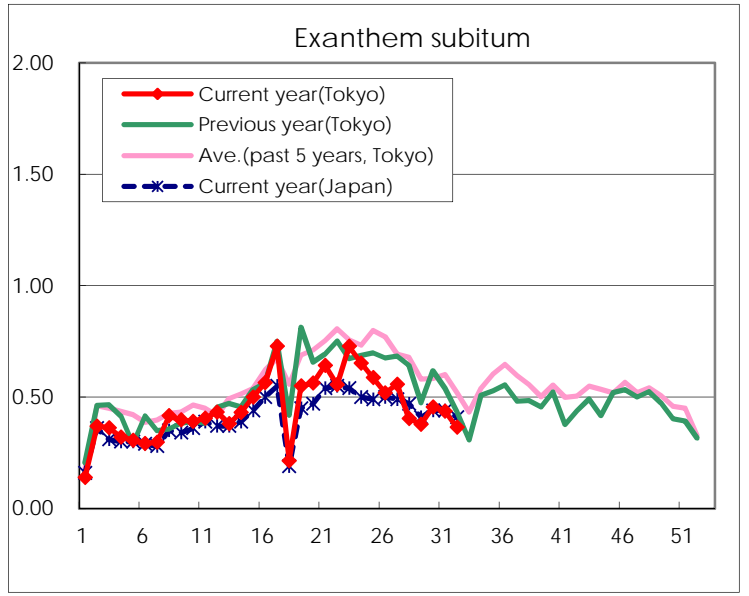
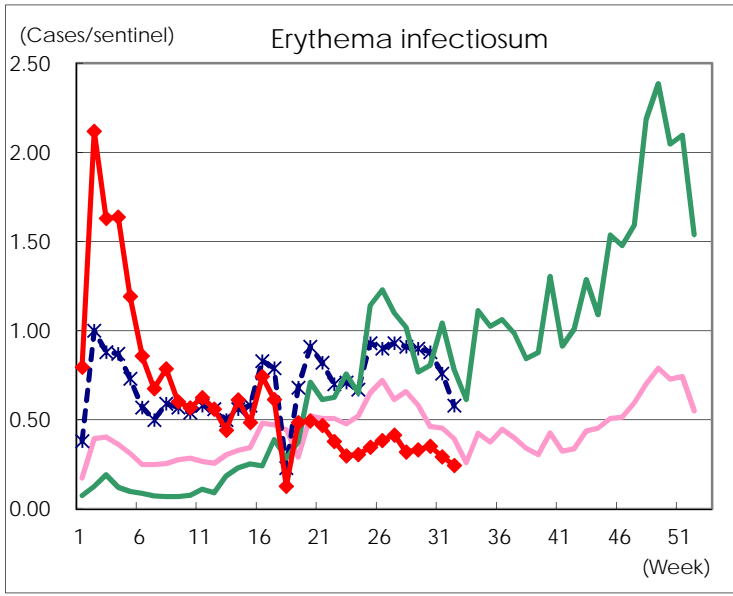
Number of patients with the diseases to be reported
by the designated clinics and hospitals

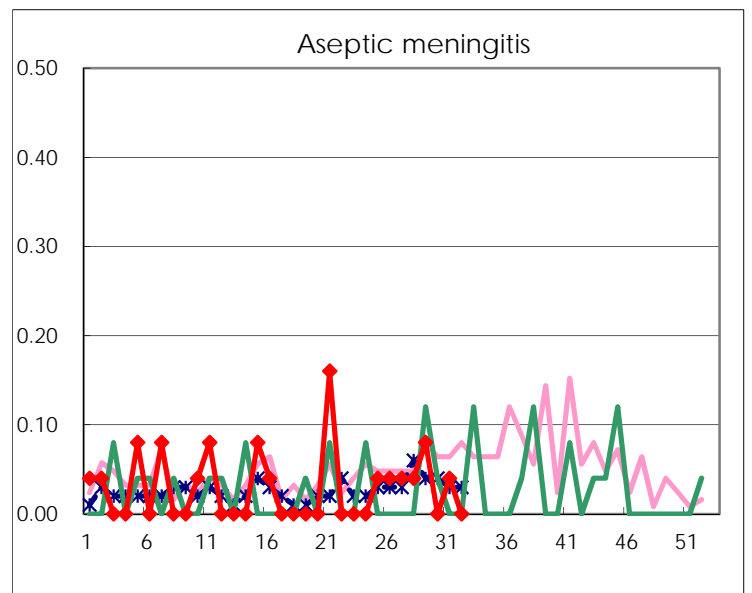
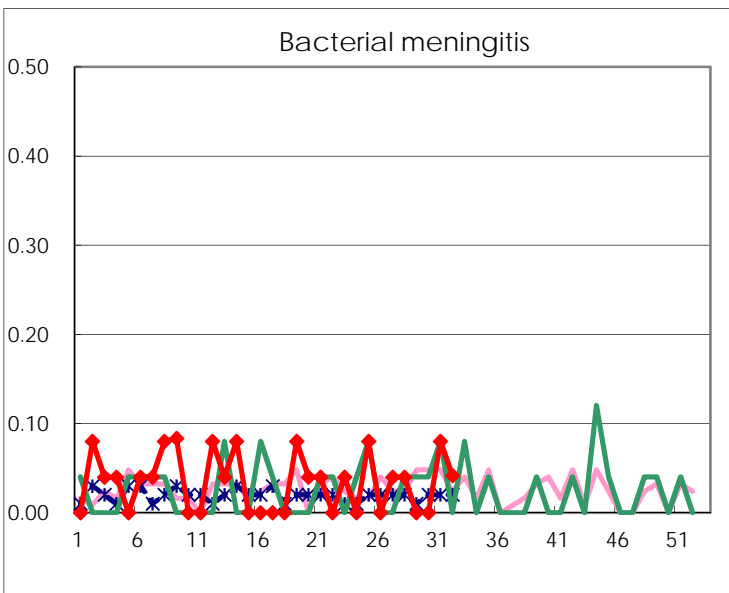
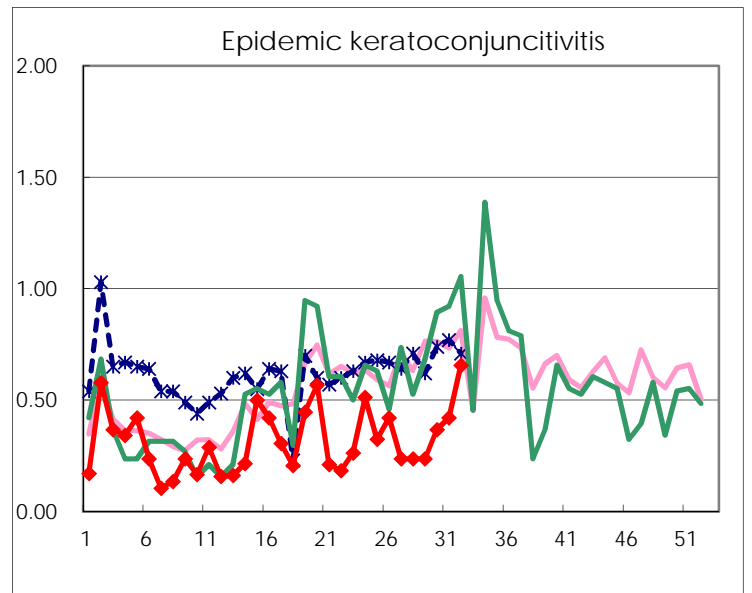
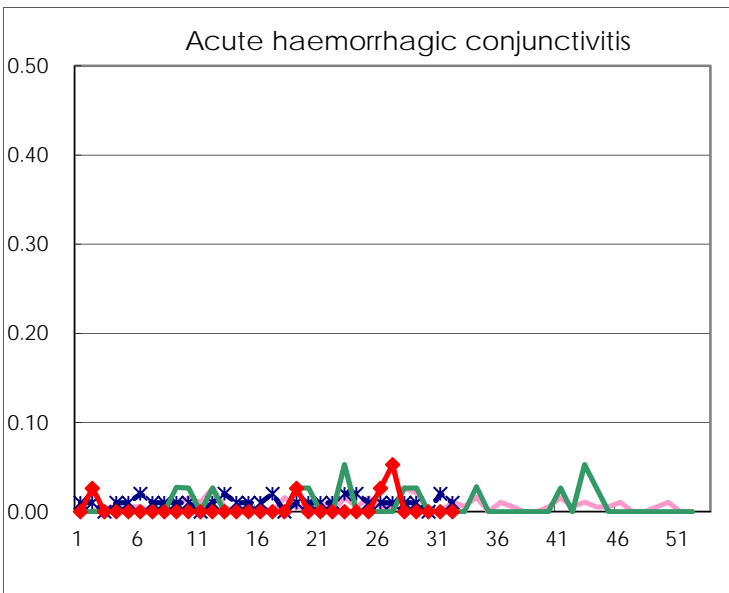
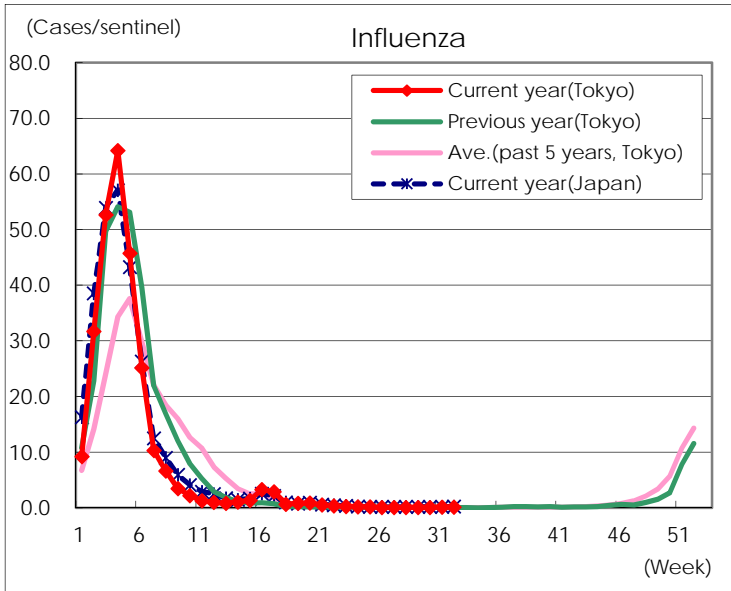
Diseases	Tokyo				
	29th	30th	31st	32nd	/sentinel
Respiratory syncytial virus infection	209	365	560	513	2.28
Pharyngoconjunctival fever	110	101	82	64	0.28
Group A streptococcal pharyngitis	481	464	338	263	1.17
Infectious gastroenteritis	1,074	1,107	900	733	3.26
Chickenpox	91	125	86	66	0.29
Hand, foot, and mouth disease	3,982	4,834	3,209	1,740	7.73
Erythema infectiosum	87	91	76	55	0.24
Exanthem subitum	99	118	113	82	0.36
Herpangina	1,025	1,314	927	662	2.94
Mumps	27	17	18	21	0.09
Kawasaki disease	2	3	2	1	
Cold with exanthems	26	37	37	16	0.07
Influenza	36	36	55	50	0.14
Acute hemorrhagic conjunctivitis					
Epidemic keratoconjunctivitis	9	14	16	23	0.66
Bacterial meningitis			2	1	0.04
Aseptic meningitis	2		1		
<i>Mycoplasma pneumoniae</i>	4	5	5	3	0.13
Chlamydial pneumonia (excluding psittacosis)	1		2	1	0.04
Infectious gastroenteritis (only by Rotavirus)	1			1	0.04
Influenza-Associated Hospitalizations	1		3	1	0.04

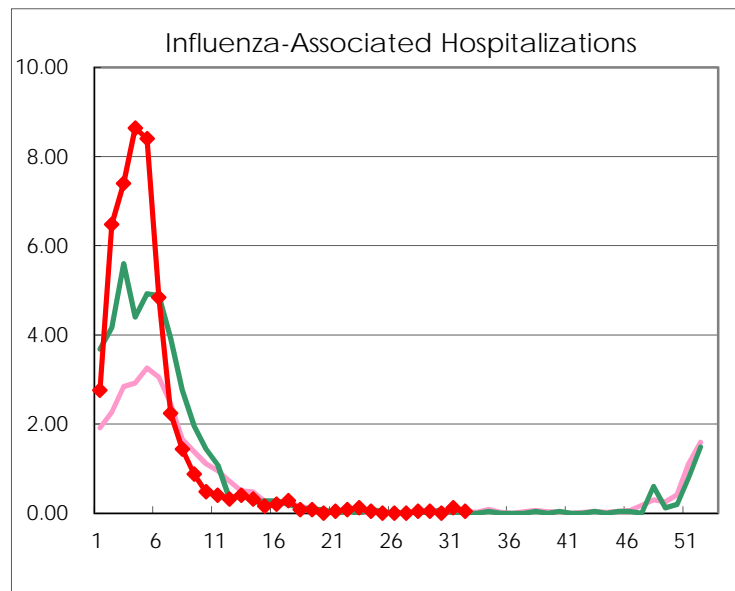
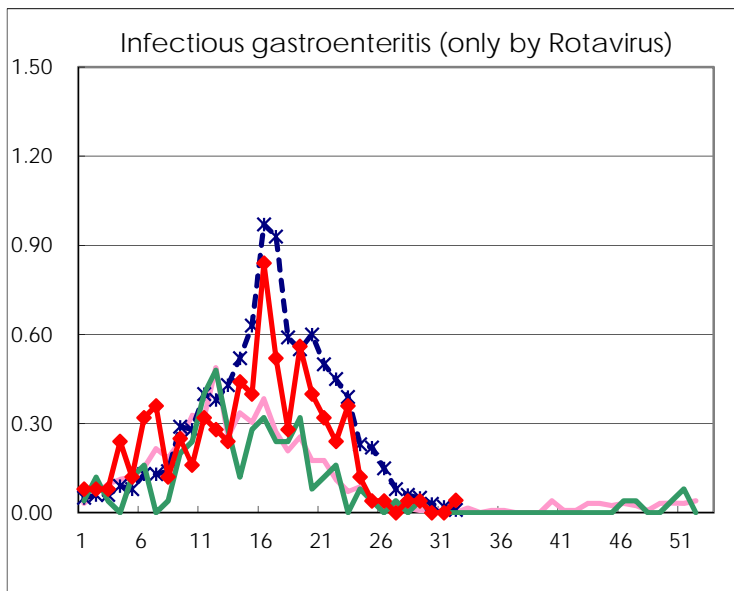
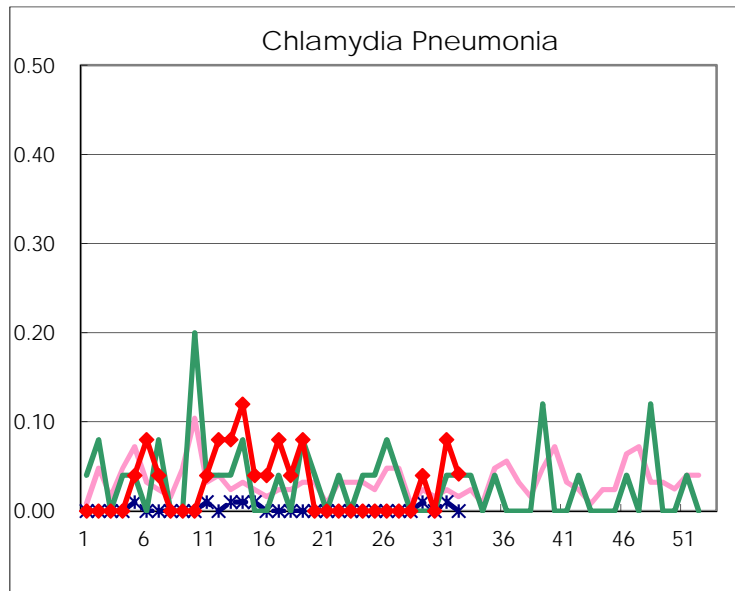
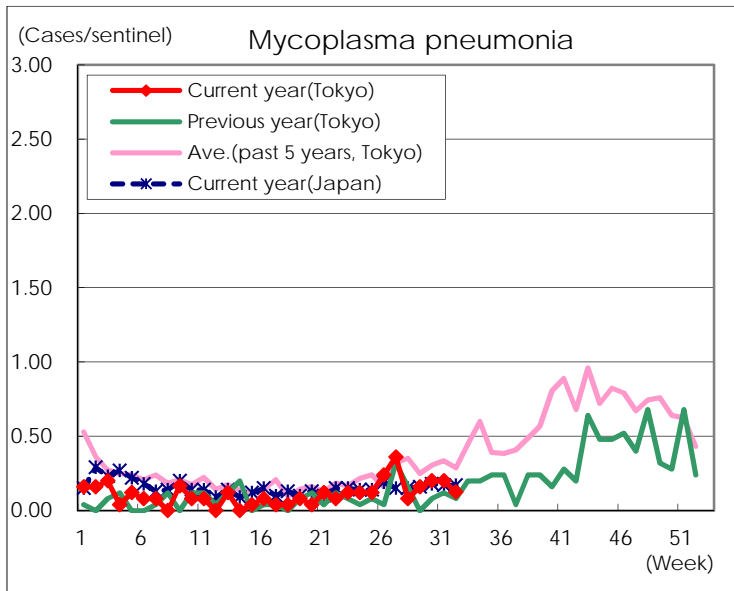
(Blank means 0.)

Disease Trend Graph (weekly reported cases per sentinel in comparison)









Number of sentinel facilities for weekly reporting		
Types of sentinels	Number of sentinels	Sentinels having reported
Pediatric	264	225
Influenza	419	348
Ophthalmic	39	35
Specially-designated	25	24