

22 August 2019 / Number 33

Surveillance System in Tokyo, Japan

The infectious diseases which all physicians must report

All physicians must report to health centers the incidence of the diseases which are shown at page one. Health centers electronically report the individual cases to Tokyo Metropolitan Infectious Disease Surveillance Center.

The infectious diseases required to be reported by the sentinels

The numbers of patients who visit the sentinel clinics or hospitals during a week are reported to health centers in Tokyo. And they electronically report the numbers to Tokyo Metropolitan Infectious Disease Surveillance Center. We have about 500 sentinel clinics and hospitals in Tokyo.

Tokyo Metropolitan Institute of Public Health

TEL:81-3-3363-3213 FAX:81-3-5332-7365

e-mail:www@tokyo-eiken.go.jp

URL:idsc.tokyo-eiken.go.jp/

Number of patients with the diseases which all physicians must report

Category	Diseases	Tokyo					Japan	
		30th	31st	32nd	33rd	Cum 2019	33rd	Cum 2019
I	Ebola hemorrhagic fever							
	Crimean-Congo hemorrhagic fever							
	Smallpox							
	South American hemorrhagic fever							
	Plague							
	Marburg disease							
	Lassa fever							
II	Acute poliomyelitis							
	Tuberculosis	71	79	58	33	1,992	273	13,510
	Diphtheria							
	Severe Acute Respiratory Syndrome(SARS)							
	Middle East Respiratory Syndrome (MERS)							
	Avian influenza H5N1							
	Avian influenza H7N9							
III	Cholera					2		3
	Shigellosis				1	14	2	56
	Enterohemorrhagic Escherichia coli infection	7	9	17	11	191	154	2,048
	Typhoid fever					3	1	22
	Paratyphoid fever					3		11
IV	Hepatitis E			3	3	83	7	333
	West Nile fever							
	Hepatitis A	2	8	5	3	100	6	301
	Echinococcosis							13
	Yellow fever							
	Psittacosis					3		11
	Omsk hemorrhagic fever							
	Relapsing fever						1	2
	Kyasanur forest disease							
	Q fever							
	Rabies							
	Coccidioidomycosis							2
	Monkeypox							
	Zika virus infection							
	Severe Fever with Thrombocytopenia Syndrome					1		63
	Hemorrhagic fever with renal syndrome							
	Western equine encephalitis							
	Tick-borne encephalitis							
	Anthrax							
	Chikungunya fever					2	3	19
	Scrub typhus(Tsutsugamushi disease)							81
	Dengue fever	1	3	5	6	66	24	224
	Eastern equine encephalitis							
	Avian influenza (excluding H5N1 and H7N9)							
	Nipah virus infection							
	Japanese spotted fever						5	132
	Japanese encephalitis							
	Hantavirus pulmonary syndrome							
	Herpes B virus infection							
	Glanders							
	Brucellosis					1		2
	Venezuelan equine encephalitis							
	Hendra virus infection							
	Epidemic typhus							
	Botulism							1
Malaria	1				8		30	
Tularemia								
Lyme disease							8	
Lyssavirus infection(excluding rabies)								
Rift valley fever								
Melioidosis								
Legionellosis	4	6	1	5	116	40	1,385	
Leptospirosis					1	1	7	
Rocky mountain spotted fever								

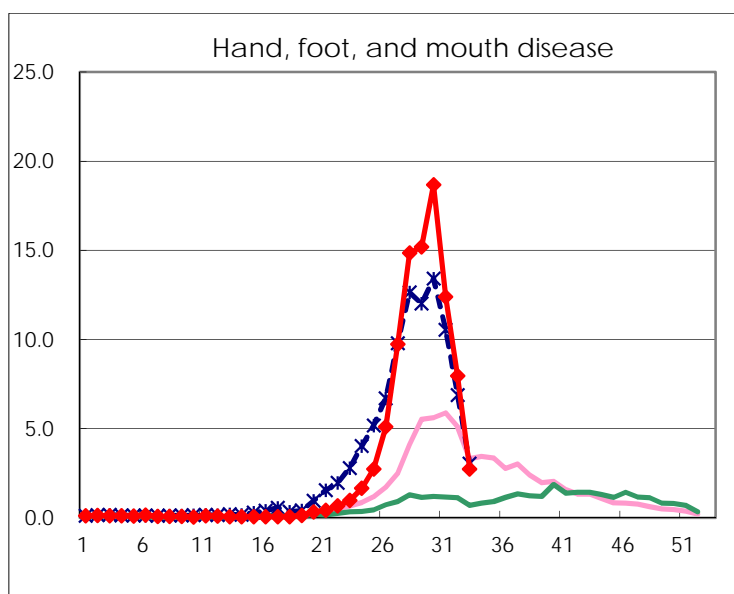
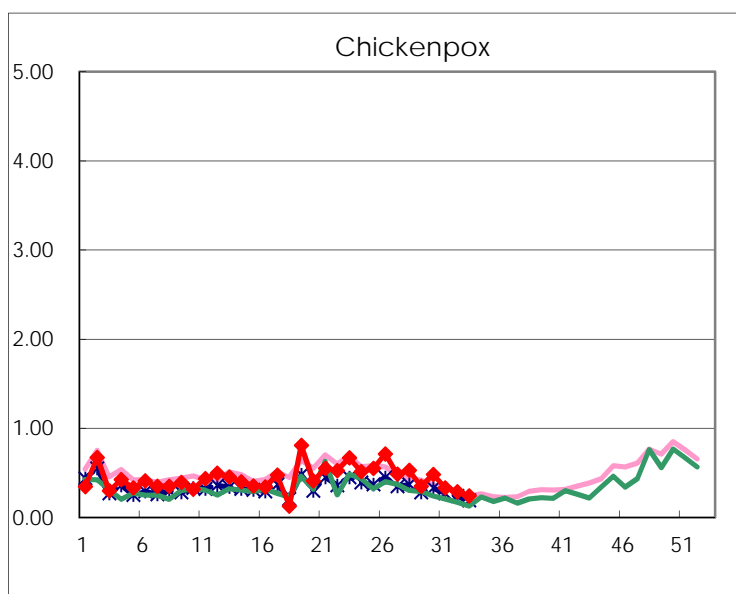
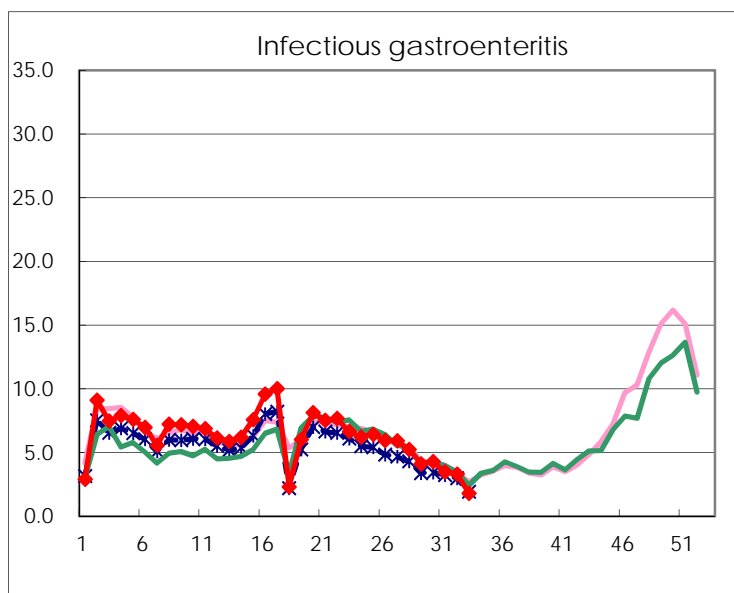
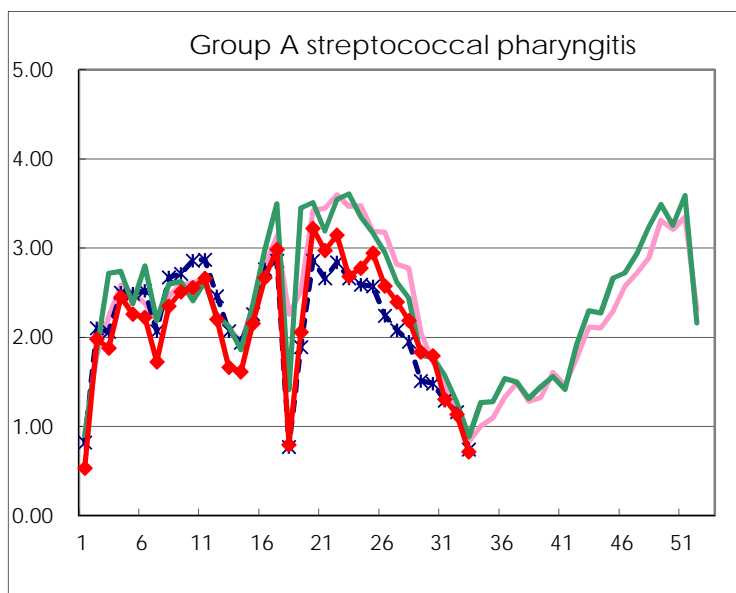
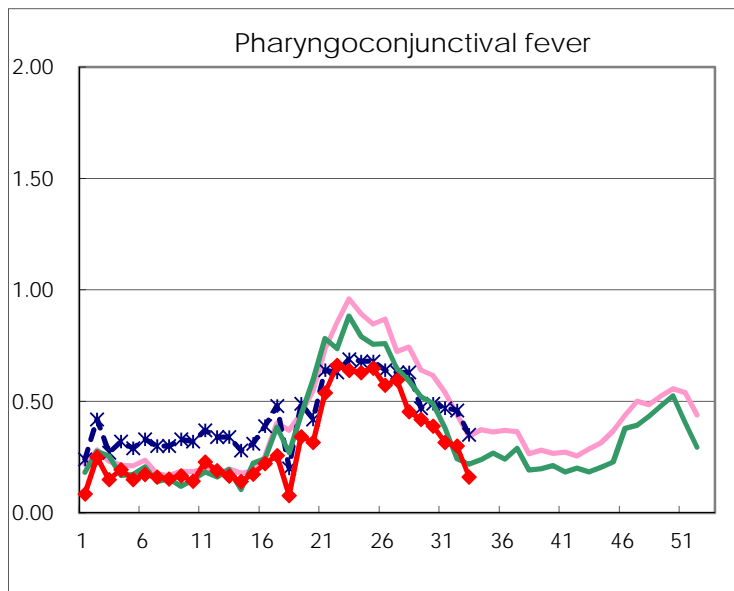
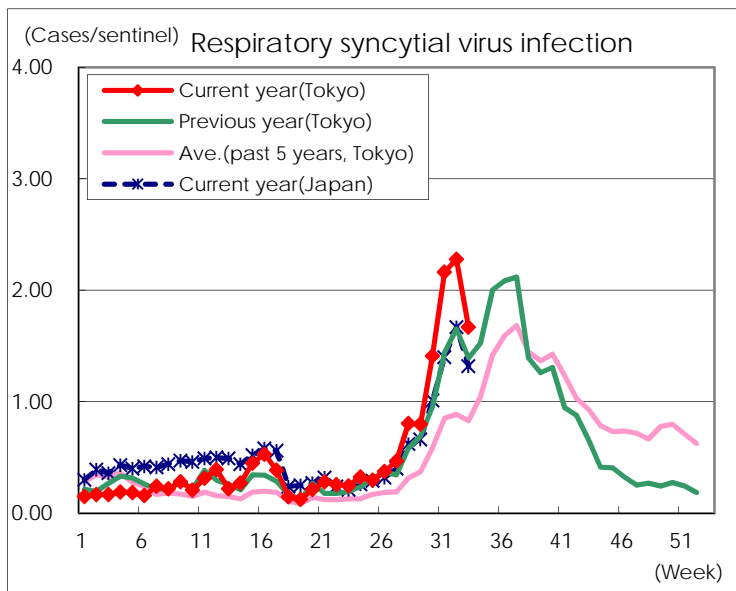
Category	Diseases	Tokyo					Japan	
		30th	31st	32nd	33rd	Cum 2019	33rd	Cum 2019
V	Amebiasis	5	3	4	1	109	2	543
	Viral hepatitis(excluding hepatitis A and E)	5	3	3	5	64	3	205
	CRE infection	2	8	3	4	118	24	1,283
	Acute Flaccid Paralysis (excluding Acute poliomyelitis)					3	1	52
	Acute encephalitis(excluding JE and WNE)	1	2	2	1	54	6	588
	Cryptosporidiosis					2	2	11
	Creutzfeldt-Jakob disease				1	13	2	115
	Severe invasive streptococcal infections(TSLs)	5	3	2	1	83	6	598
	Acquired immunodeficiency syndrome (AIDS)	10	10	12	5	248	9	748
	Giardiasis				1	4	1	30
	Invasive <i>Haemophilus influenzae</i> disease	3	1	1	1	59	10	380
	Invasive meningococcal disease					2		30
	Invasive pneumococcal disease	3	2	2	3	256	18	2,258
	Varicella (limited to hospitalized case)		1	3		44	3	313
	Congenital rubella syndrome					1		3
	Syphilis	36	25	29	26	1,091	48	4,125
	Disseminated cryptococcosis					9		96
	Tetanus			1		5	5	81
	Vancomycin-resistant <i>S. aureus</i> infection							
	Vancomycin-resistant <i>Enterococcus</i> infection					5		47
	Pertussis	33	25	24	11	944	149	10,733
Rubella	19	10	8	14	794	25	2,108	
Measles		2		1	104	2	674	
MDRA infection					2		18	

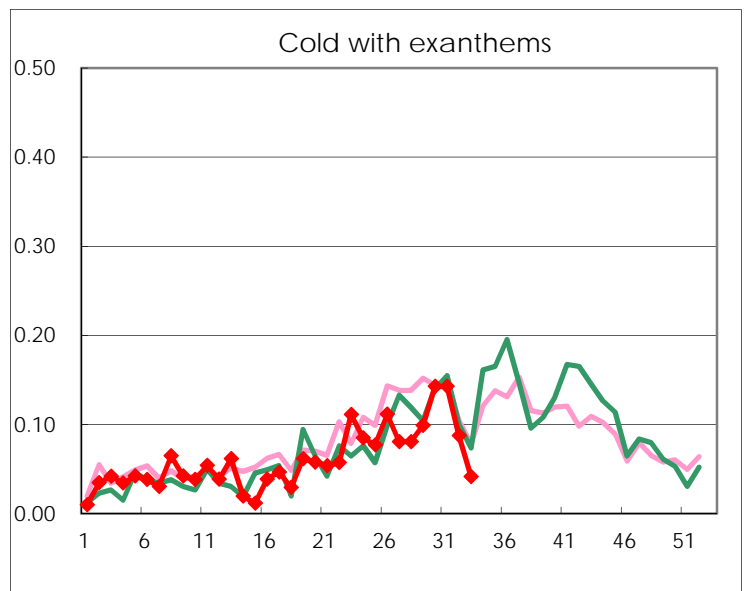
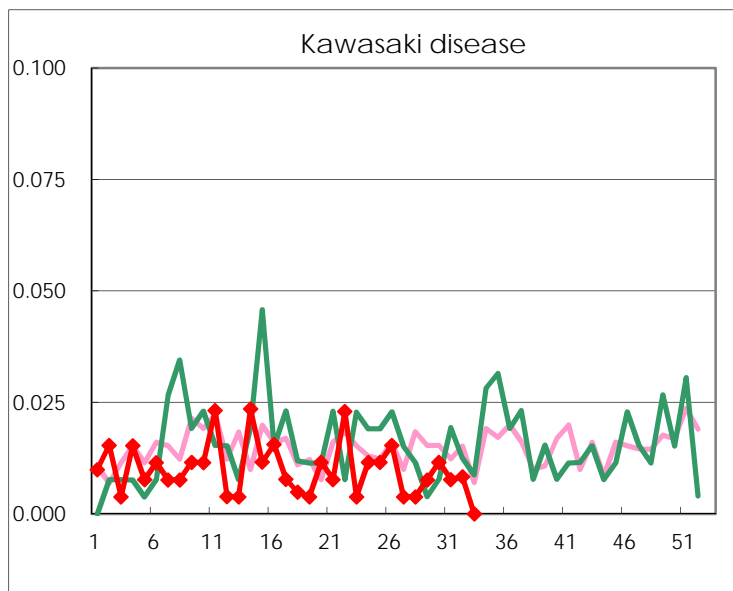
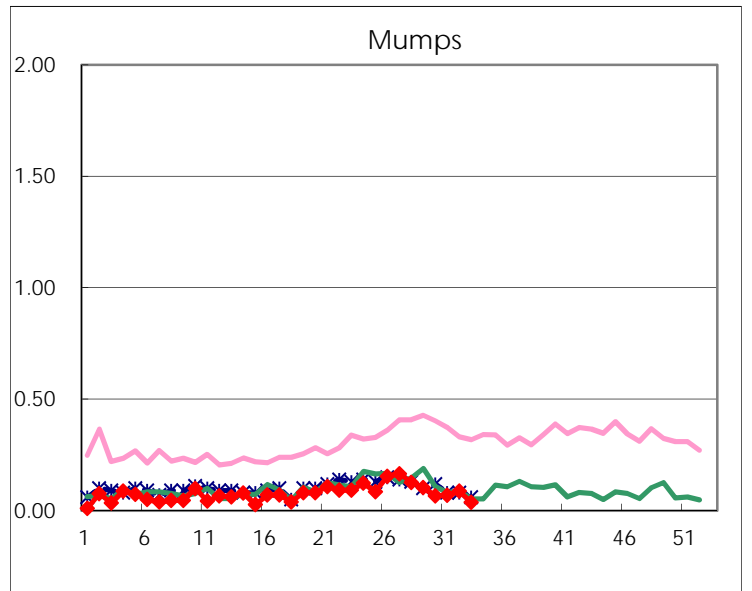
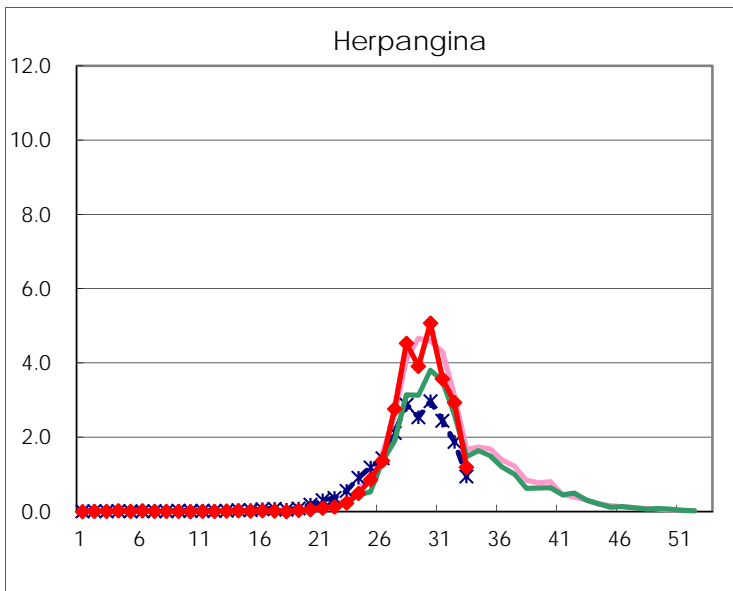
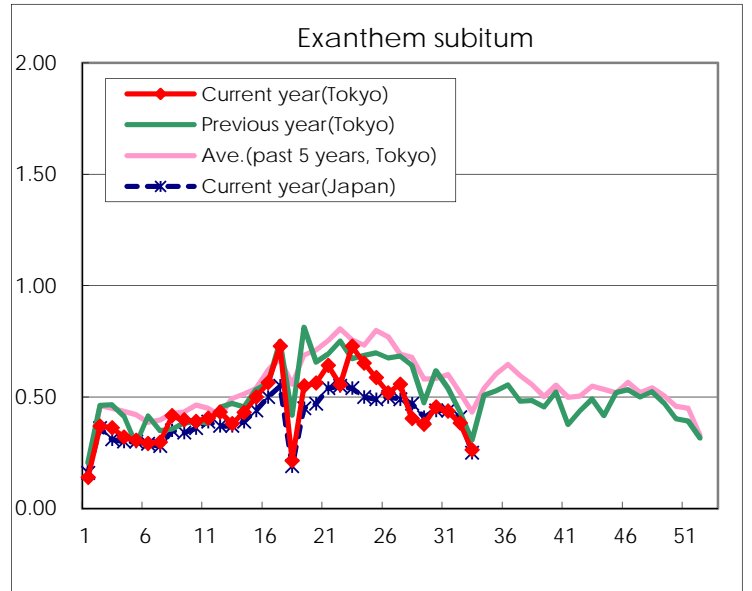
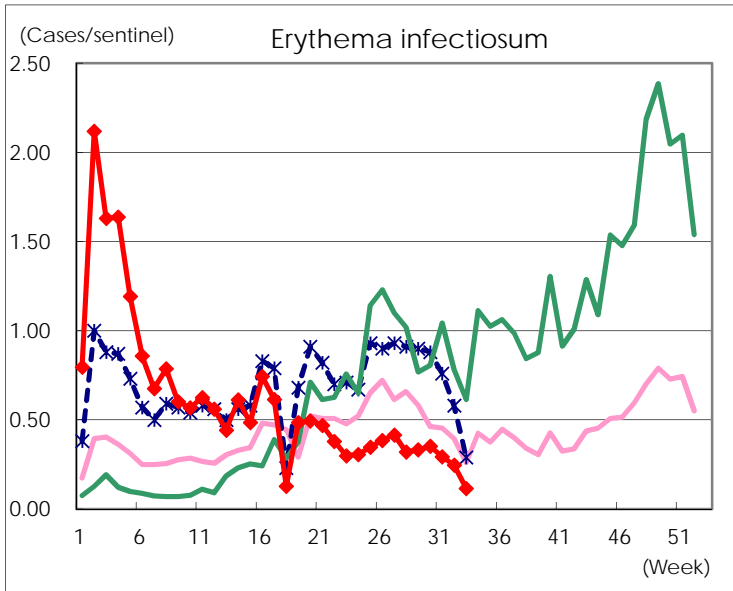
Number of patients with the diseases to be reported
by the designated clinics and hospitals

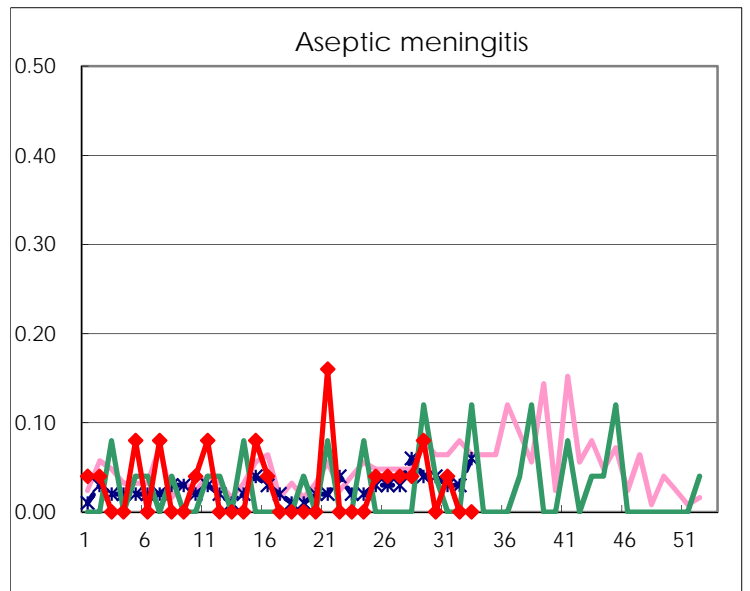
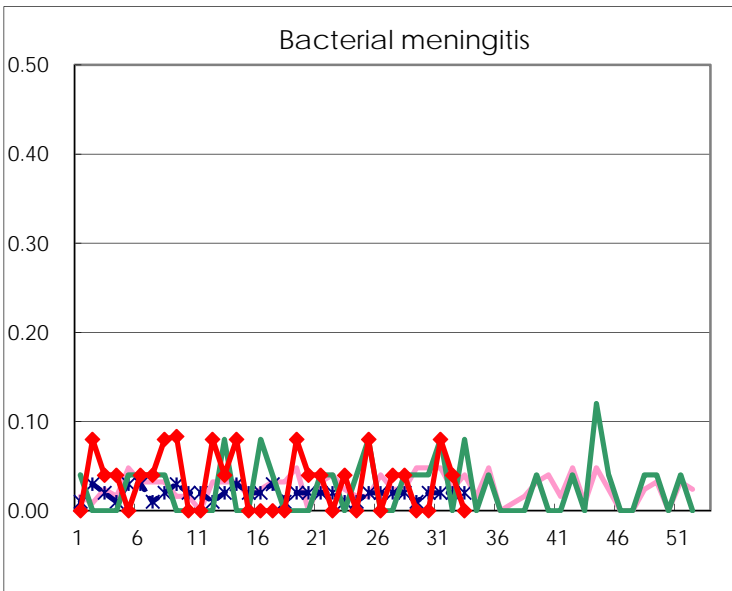
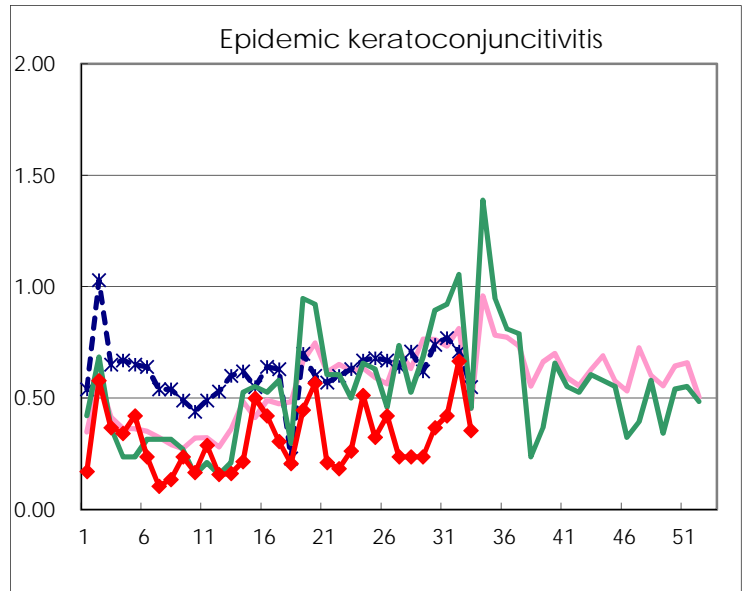
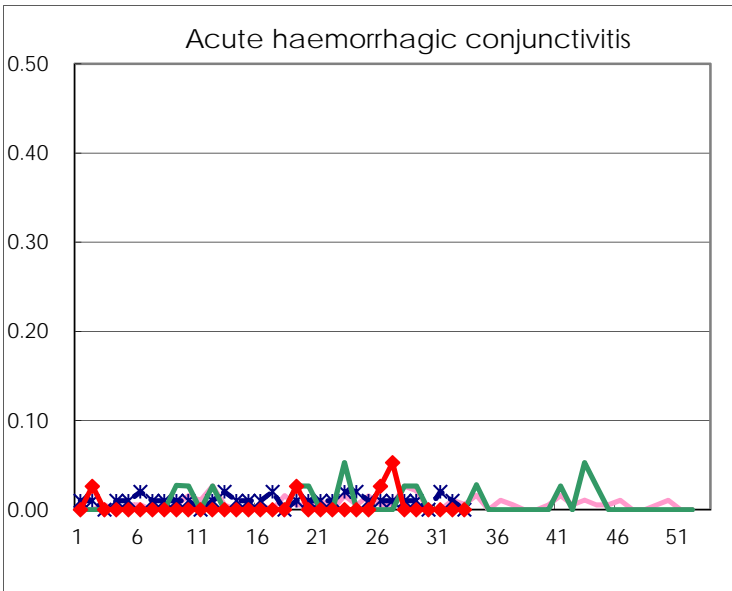
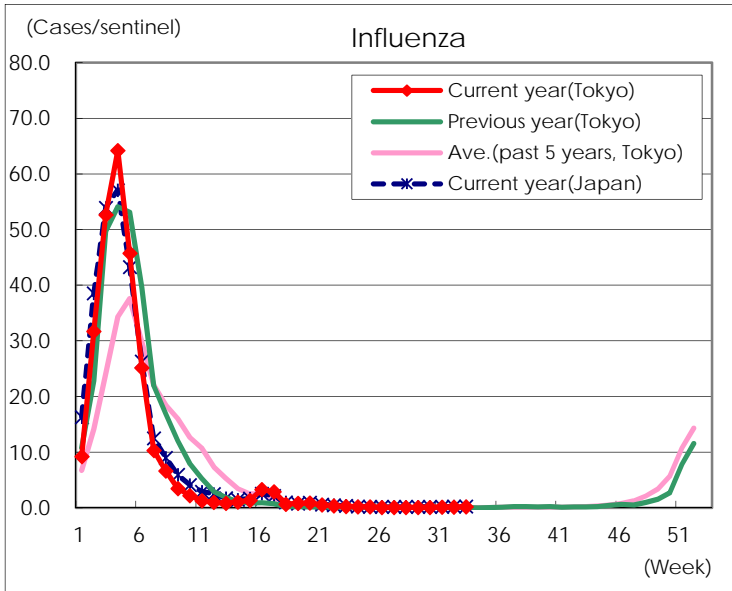
Diseases	Tokyo				
	30th	31st	32nd	33rd	/sentinel
Respiratory syncytial virus infection	365	560	547	362	1.67
Pharyngoconjunctival fever	101	82	72	35	0.16
Group A streptococcal pharyngitis	464	338	272	155	0.71
Infectious gastroenteritis	1,107	900	789	388	1.79
Chickenpox	125	86	69	52	0.24
Hand, foot, and mouth disease	4,834	3,209	1,909	593	2.73
Erythema infectiosum	91	76	59	25	0.12
Exanthem subitum	118	113	92	57	0.26
Herpangina	1,314	927	706	260	1.20
Mumps	17	18	21	8	0.04
Kawasaki disease	3	2	2		
Cold with exanthems	37	37	21	9	0.04
Influenza	36	55	50	61	0.17
Acute hemorrhagic conjunctivitis					
Epidemic keratoconjunctivitis	14	16	24	11	0.35
Bacterial meningitis		2	1		
Aseptic meningitis		1			
<i>Mycoplasma pneumoniae</i>	5	5	3	4	0.16
Chlamydial pneumonia (excluding psittacosis)		2	1		
Infectious gastroenteritis (only by Rotavirus)			1		
Influenza-Associated Hospitalizations		3	1	2	0.08

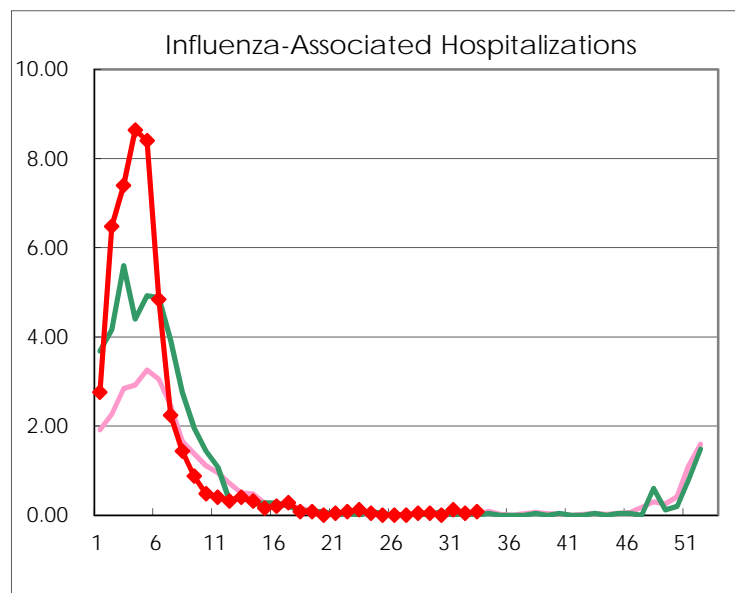
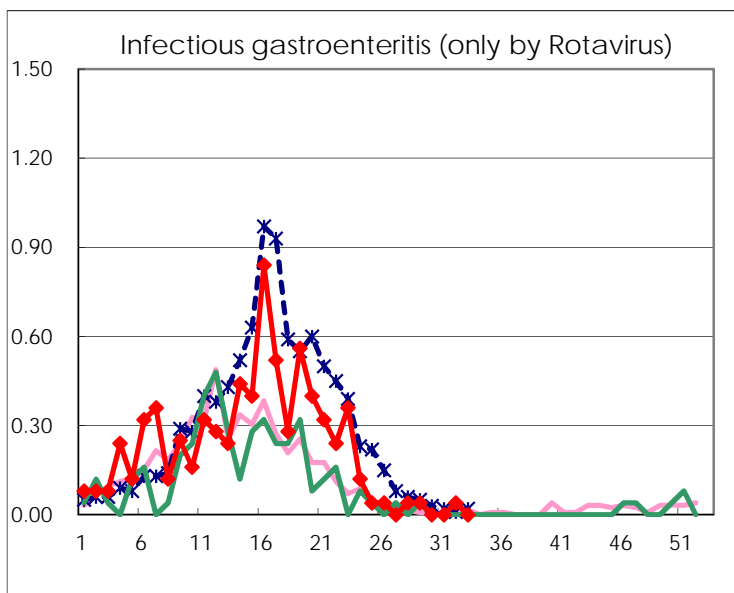
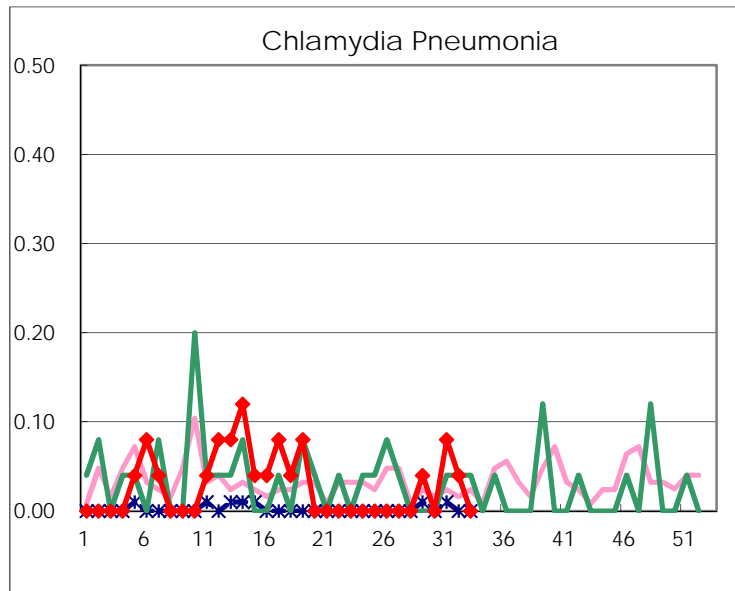
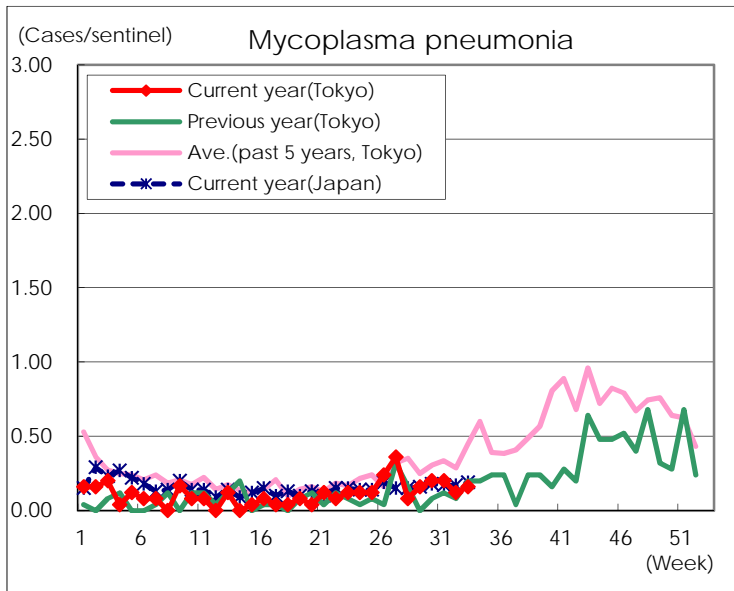
(Blank means 0.)

Disease Trend Graph (weekly reported cases per sentinel in comparison)









Number of sentinel facilities for weekly reporting		
Types of sentinels	Number of sentinels	Sentinels having reported
Pediatric	264	217
Influenza	419	350
Ophthalmic	39	31
Specially-designated	25	25