

29 August 2019 / Number 34

Surveillance System in Tokyo, Japan

The infectious diseases which all physicians must report

All physicians must report to health centers the incidence of the diseases which are shown at page one. Health centers electronically report the individual cases to Tokyo Metropolitan Infectious Disease Surveillance Center.

The infectious diseases required to be reported by the sentinels

The numbers of patients who visit the sentinel clinics or hospitals during a week are reported to health centers in Tokyo. And they electronically report the numbers to Tokyo Metropolitan Infectious Disease Surveillance Center. We have about 500 sentinel clinics and hospitals in Tokyo.

Tokyo Metropolitan Institute of Public Health

TEL:81-3-3363-3213 FAX:81-3-5332-7365

e-mail:www@tokyo-eiken.go.jp

URL:idsc.tokyo-eiken.go.jp/

Number of patients with the diseases which all physicians must report

Category	Diseases	Tokyo					Japan	
		31st	32nd	33rd	34th	Cum 2019	34th	Cum 2019
I	Ebola hemorrhagic fever							
	Crimean-Congo hemorrhagic fever							
	Smallpox							
	South American hemorrhagic fever							
	Plague							
	Marburg disease							
	Lassa fever							
II	Acute poliomyelitis							
	Tuberculosis	79	58	35	82	2,075	388	13,963
	Diphtheria							
	Severe Acute Respiratory Syndrome(SARS)							
	Middle East Respiratory Syndrome (MERS)							
	Avian influenza H5N1							
	Avian influenza H7N9							
III	Cholera					2		3
	Shigellosis			1		14	2	58
	Enterohemorrhagic Escherichia coli infection	9	17	11	18	209	150	2,204
	Typhoid fever					3	4	26
	Paratyphoid fever					3		11
IV	Hepatitis E		3	3	3	86	8	344
	West Nile fever							
	Hepatitis A	8	5	3	6	106	11	312
	Echinococcosis							14
	Yellow fever							
	Psittacosis					3	1	12
	Omsk hemorrhagic fever							
	Relapsing fever							2
	Kyasanur forest disease							
	Q fever							
	Rabies							
	Coccidioidomycosis							2
	Monkeypox							
	Zika virus infection							
	Severe Fever with Thrombocytopenia Syndrome					1	7	70
	Hemorrhagic fever with renal syndrome							
	Western equine encephalitis							
	Tick-borne encephalitis							
	Anthrax							
	Chikungunya fever					2	2	21
	Scrub typhus(Tsutsugamushi disease)							81
	Dengue fever	3	5	7	6	73	33	262
	Eastern equine encephalitis							
	Avian influenza (excluding H5N1 and H7N9)							
	Nipah virus infection							
	Japanese spotted fever						7	140
	Japanese encephalitis							
	Hantavirus pulmonary syndrome							
	Herpes B virus infection							
	Glanders							
	Brucellosis					1		2
	Venezuelan equine encephalitis							
	Hendra virus infection							
	Epidemic typhus							
Botulism							1	
Malaria			1		9	3	35	
Tularemia								
Lyme disease							8	
Lyssavirus infection(excluding rabies)								
Rift valley fever								
Melioidosis							1	
Legionellosis	6	1	5	5	121	41	1,433	
Leptospirosis				1	2	1	8	
Rocky mountain spotted fever								

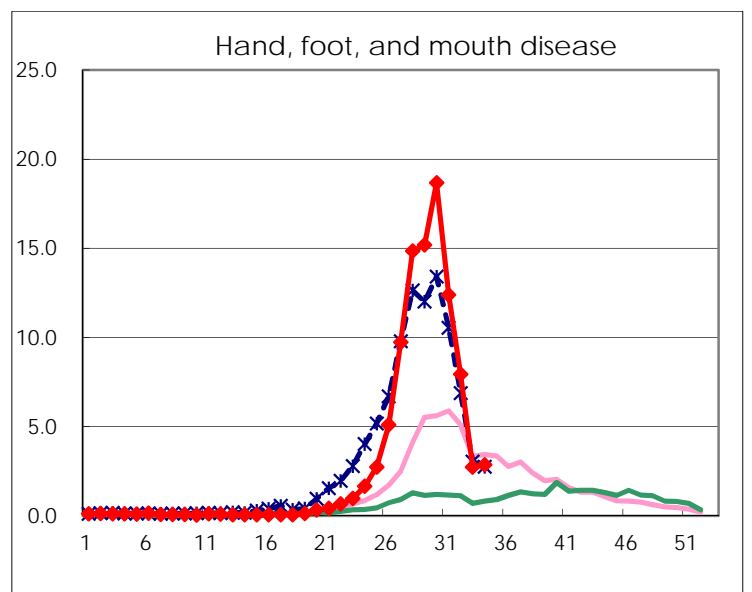
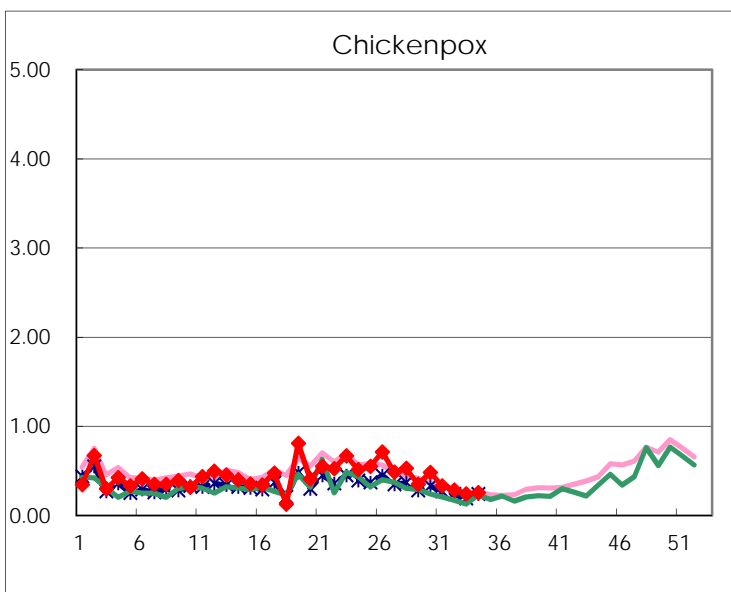
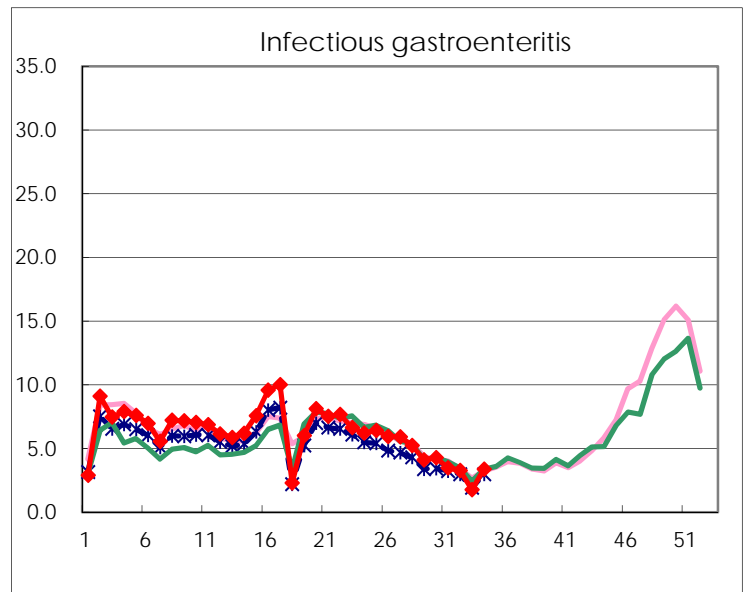
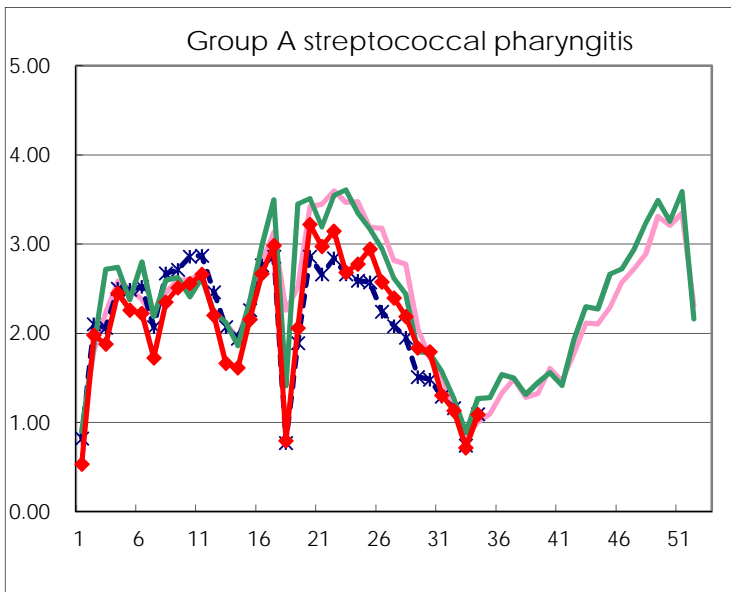
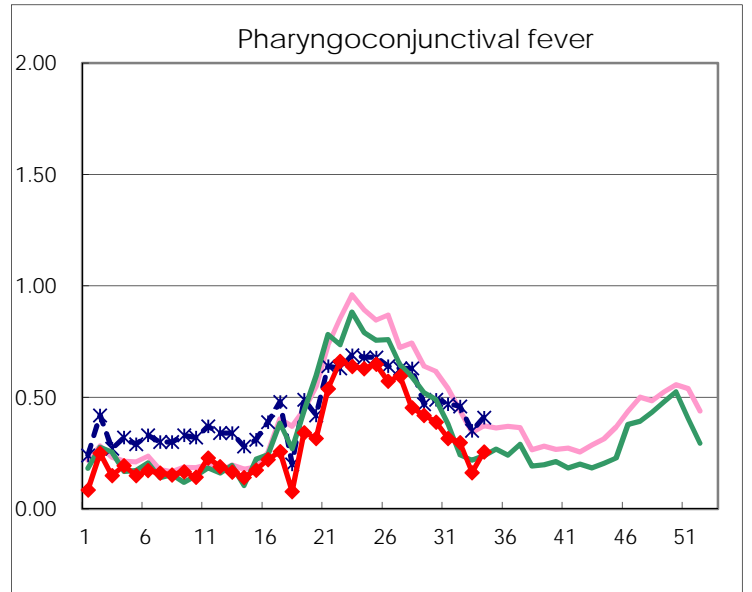
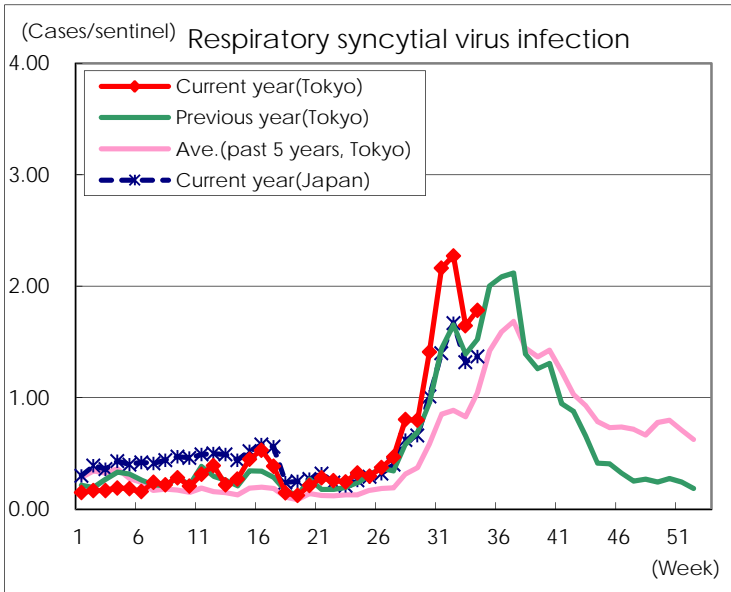
Category	Diseases	Tokyo					Japan	
		31st	32nd	33rd	34th	Cum 2019	34th	Cum 2019
V	Amebiasis	3	4	1	3	112	12	559
	Viral hepatitis(excluding hepatitis A and E)	3	3	5	2	66	1	213
	CRE infection	8	3	4	6	124	36	1,339
	Acute Flaccid Paralysis (excluding Acute poliomyelitis)					3	1	53
	Acute encephalitis(excluding JE and WNE)	2	2	1	3	57	5	603
	Cryptosporidiosis					2	1	12
	Creutzfeldt-Jakob disease			1		13	4	119
	Severe invasive streptococcal infections(TSLs)	3	2	1	2	86	11	618
	Acquired immunodeficiency syndrome (AIDS)	10	12	5	4	252	8	767
	Giardiasis			1		4	1	31
	Invasive <i>Haemophilus influenzae</i> disease	1	1	1	3	62	6	389
	Invasive meningococcal disease					2		30
	Invasive pneumococcal disease	2	2	3	4	260	21	2,287
	Varicella (limited to hospitalized case)	1	3			44	4	318
	Congenital rubella syndrome					1		3
	Syphilis	25	29	26	38	1,129	91	4,279
	Disseminated cryptococcosis					9		97
	Tetanus		1			5	3	85
	Vancomycin-resistant <i>S. aureus</i> infection							
	Vancomycin-resistant <i>Enterococcus</i> infection					5	2	49
	Pertussis	25	24	11	19	963	284	11,112
Rubella	10	9	14	11	806	23	2,134	
Measles	2		1		104	2	676	
MDRA infection					2		19	

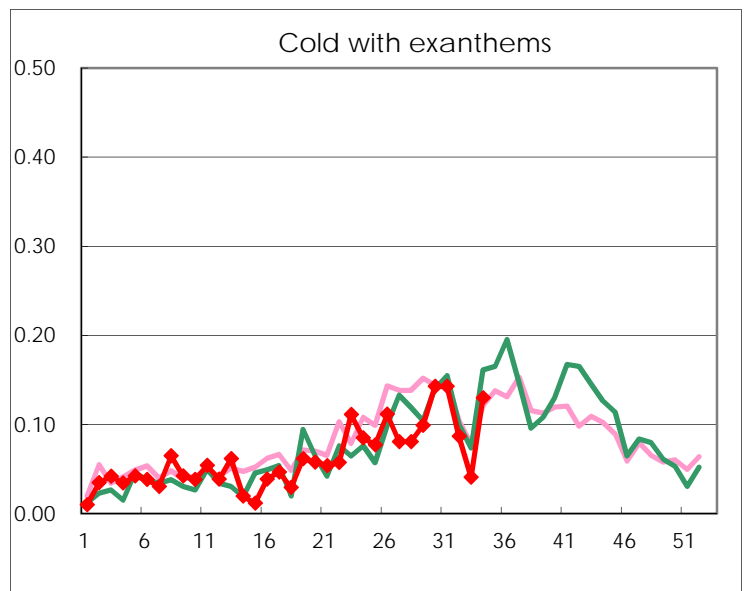
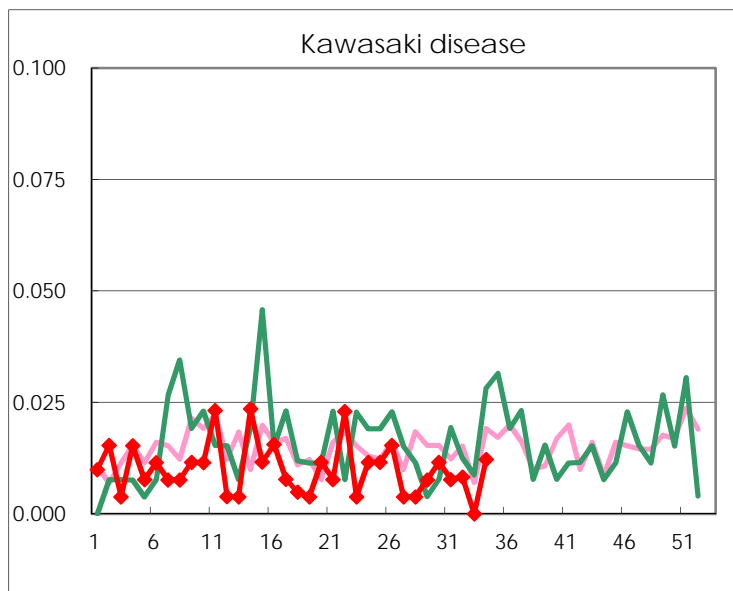
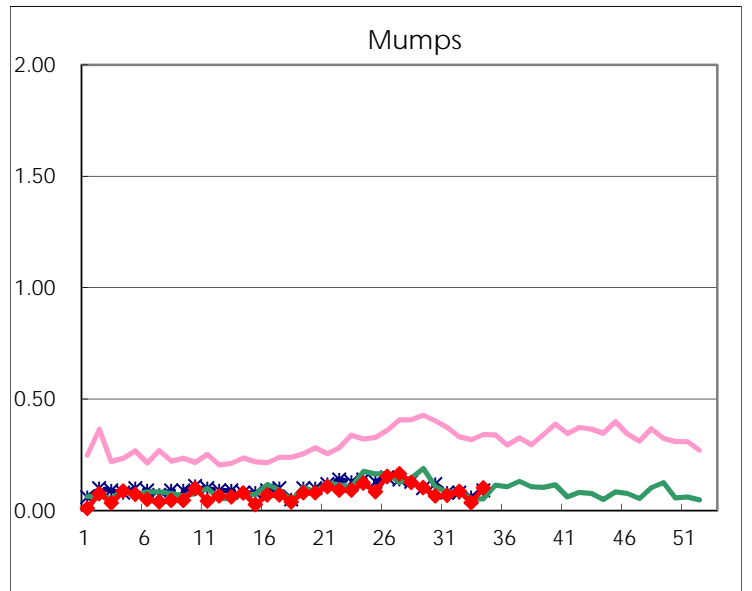
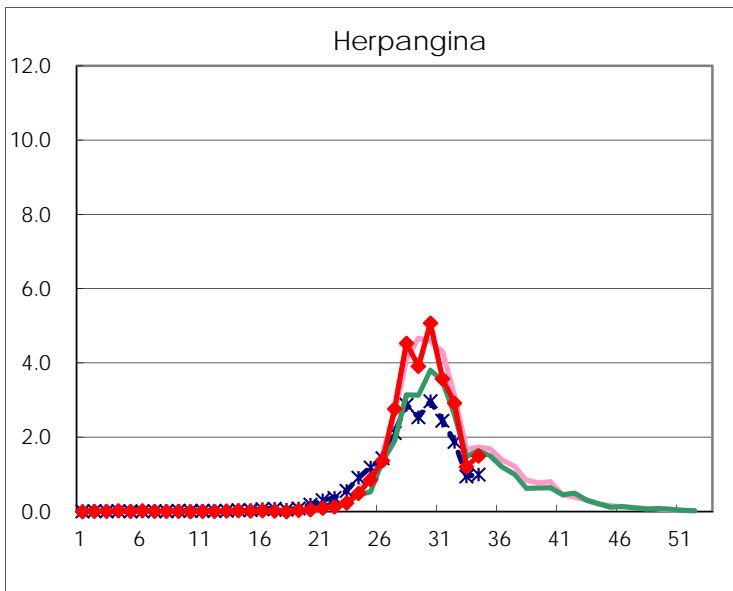
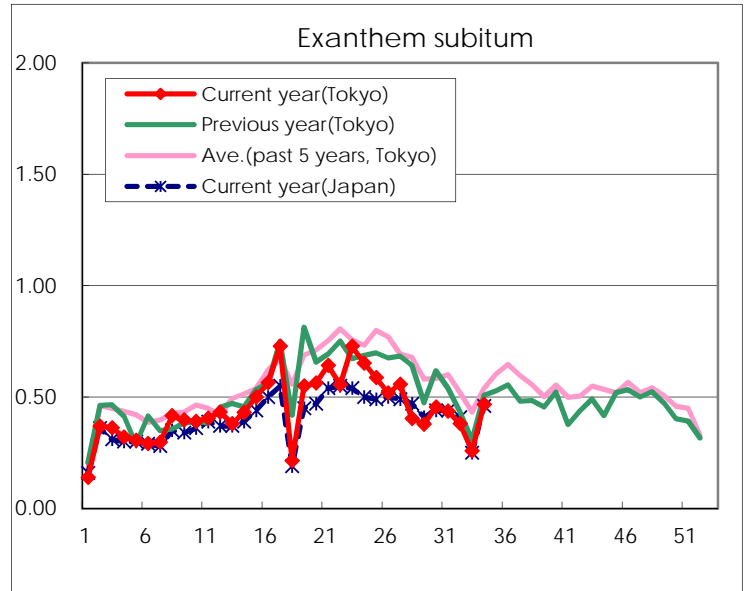
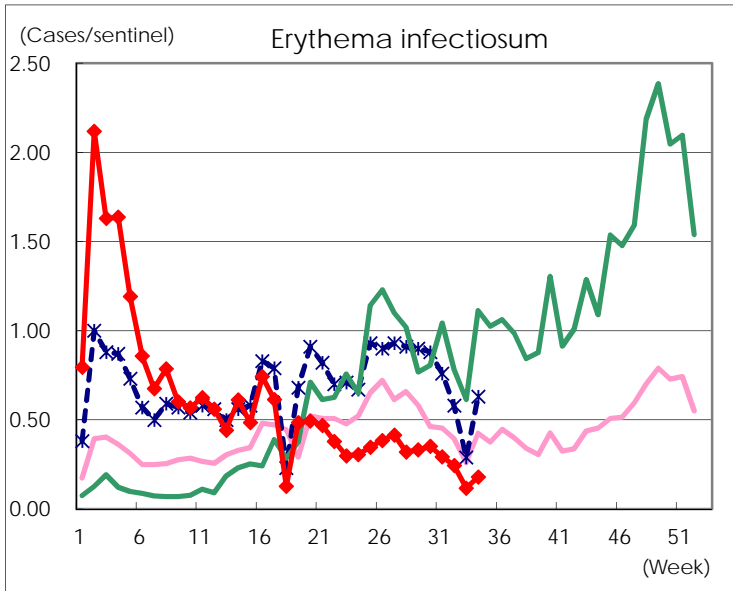
Number of patients with the diseases to be reported
by the designated clinics and hospitals

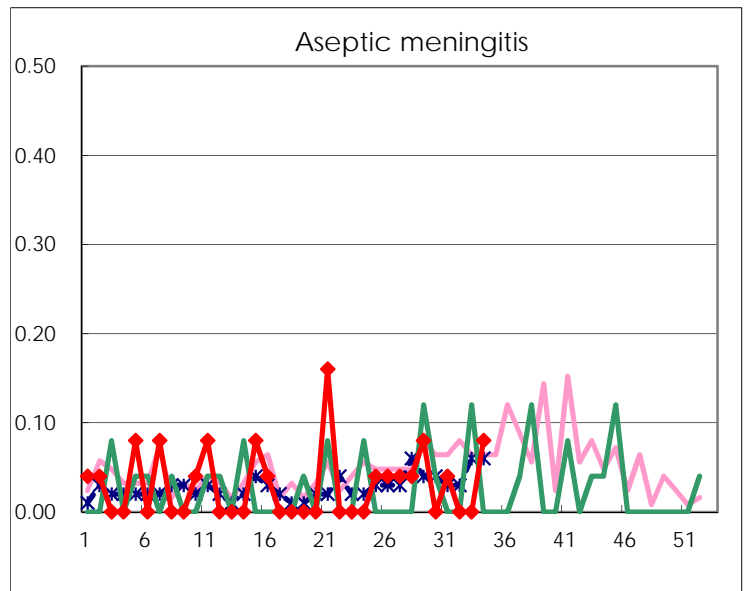
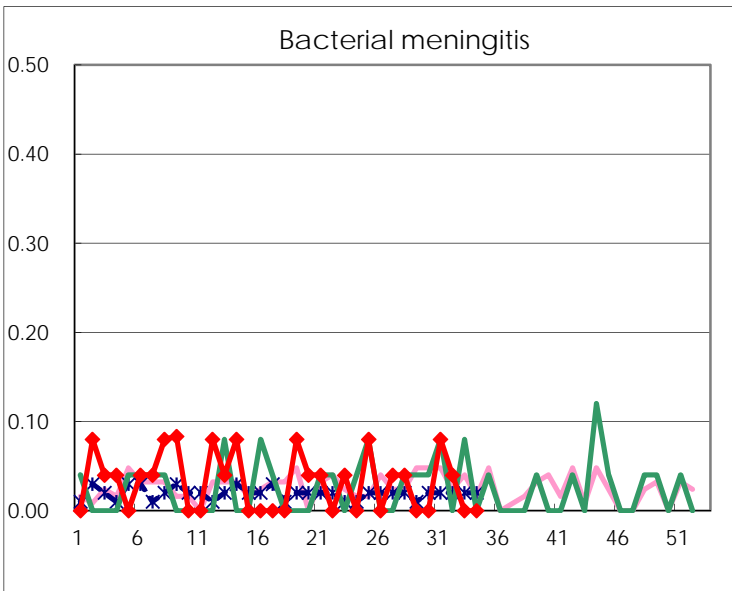
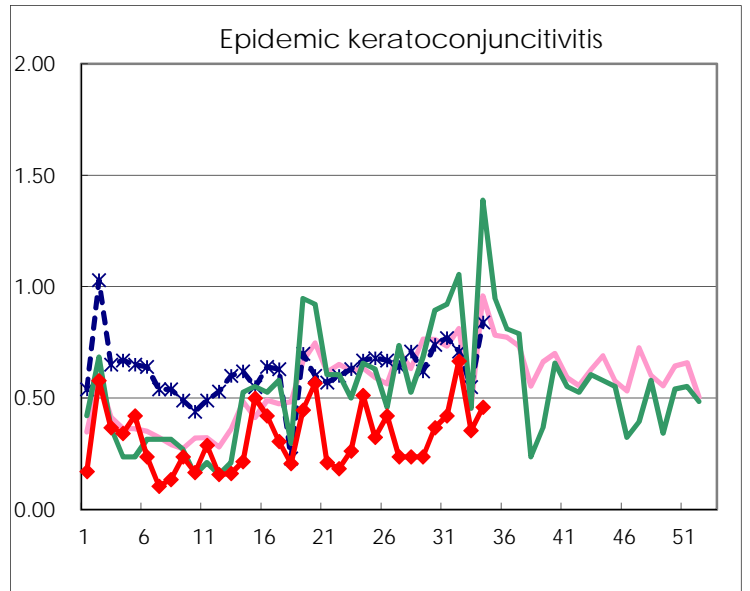
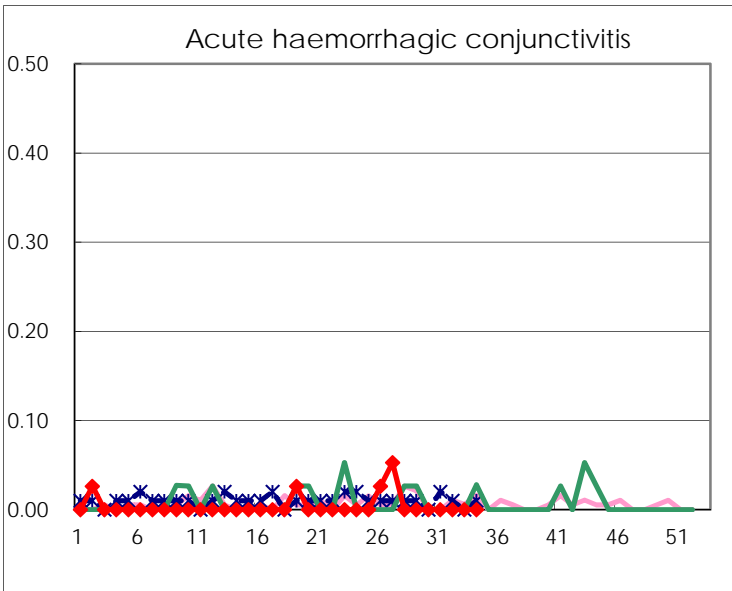
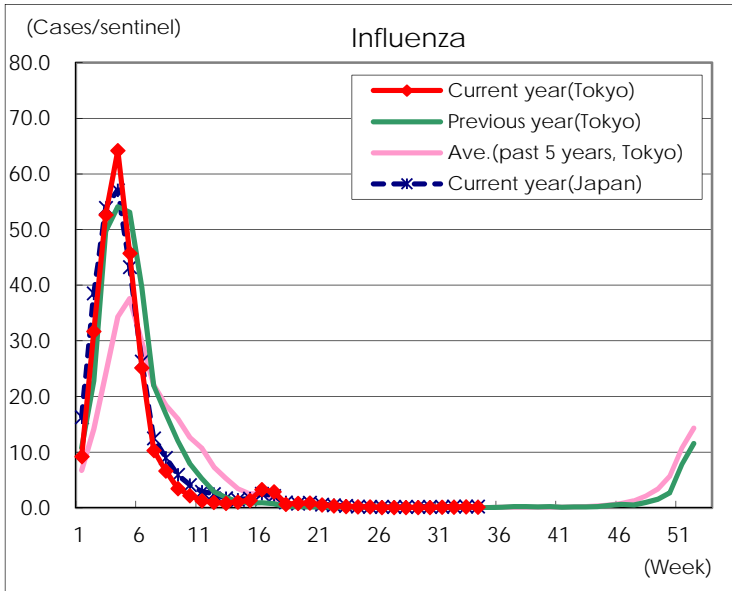
Diseases	Tokyo				
	31st	32nd	33rd	34th	/sentinel
Respiratory syncytial virus infection	560	550	364	439	1.78
Pharyngoconjunctival fever	82	72	36	63	0.26
Group A streptococcal pharyngitis	338	274	158	268	1.09
Infectious gastroenteritis	900	793	389	830	3.37
Chickenpox	86	69	53	63	0.26
Hand, foot, and mouth disease	3,209	1,922	605	701	2.85
Erythema infectiosum	76	59	26	44	0.18
Exanthem subitum	113	92	57	115	0.47
Herpangina	927	708	267	368	1.50
Mumps	18	21	8	25	0.10
Kawasaki disease	2	2		3	0.01
Cold with exanthems	37	21	9	32	0.13
Influenza	55	50	61	51	0.13
Acute hemorrhagic conjunctivitis					
Epidemic keratoconjunctivitis	16	24	11	17	0.46
Bacterial meningitis	2	1			
Aseptic meningitis	1			2	0.08
<i>Mycoplasma pneumoniae</i>	5	3	4	5	0.20
Chlamydial pneumonia (excluding psittacosis)	2	1			
Infectious gastroenteritis (only by Rotavirus)		1			
Influenza-Associated Hospitalizations	3	1	2	1	0.04

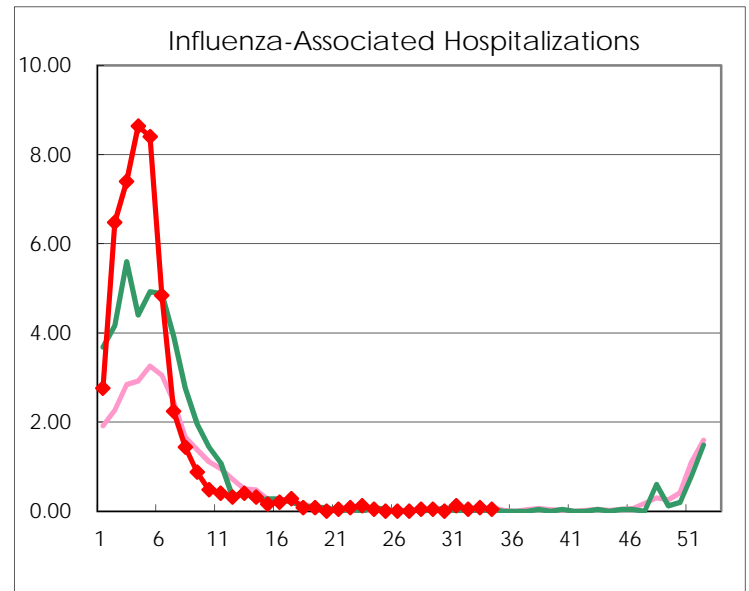
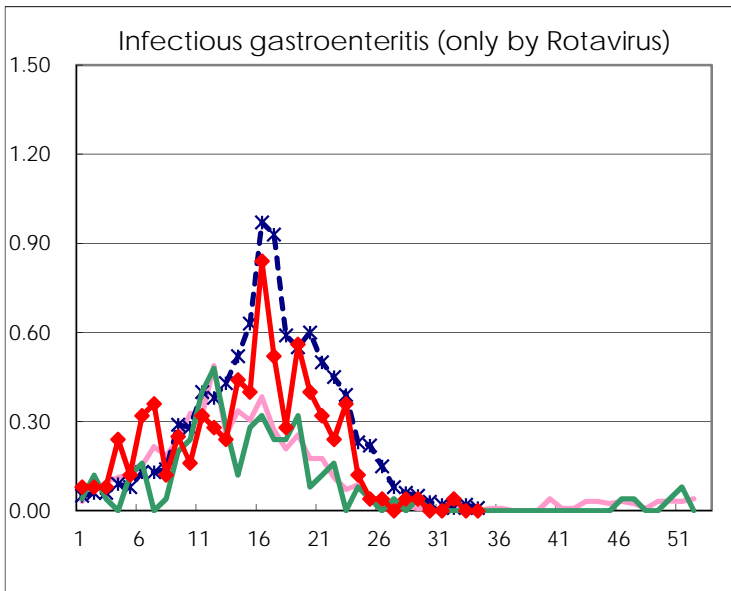
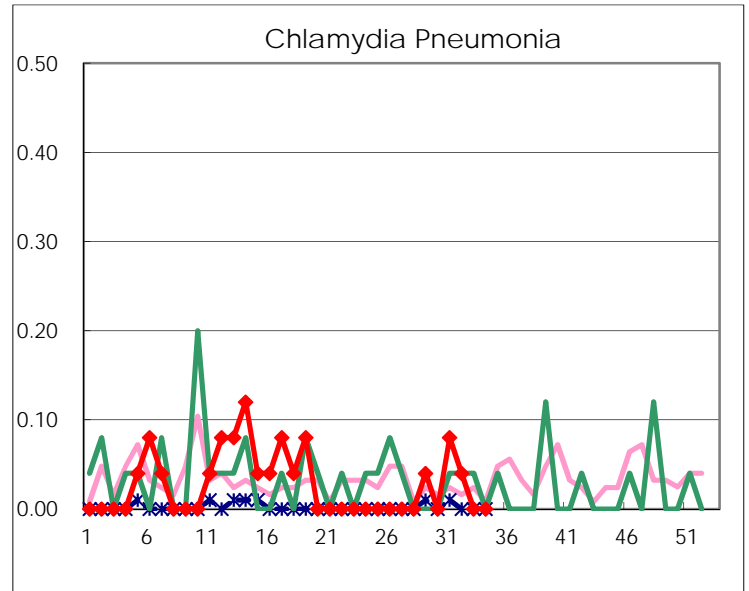
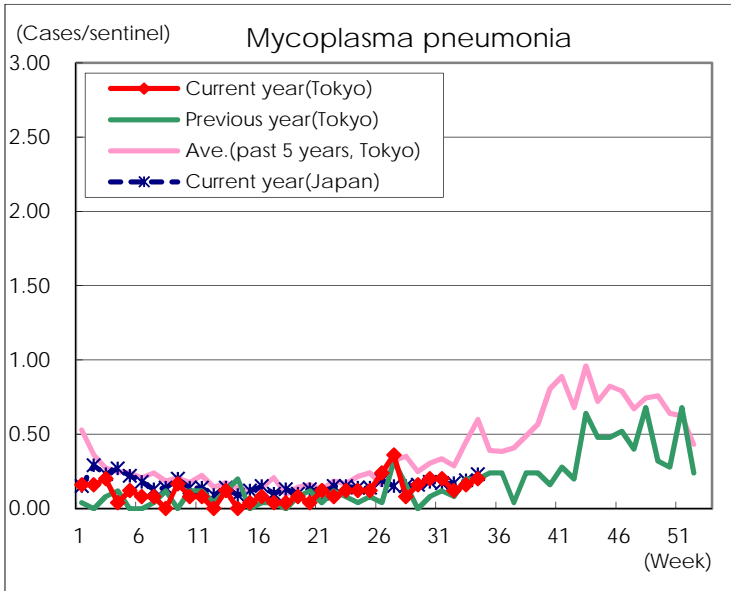
(Blank means 0.)

Disease Trend Graph (weekly reported cases per sentinel in comparison)









Number of sentinel facilities for weekly reporting		
Types of sentinels	Number of sentinels	Sentinels having reported
Pediatric	264	246
Influenza	419	393
Ophthalmic	39	37
Specially-designated	25	25